

図

版



畠中遺跡全景（航空写真）



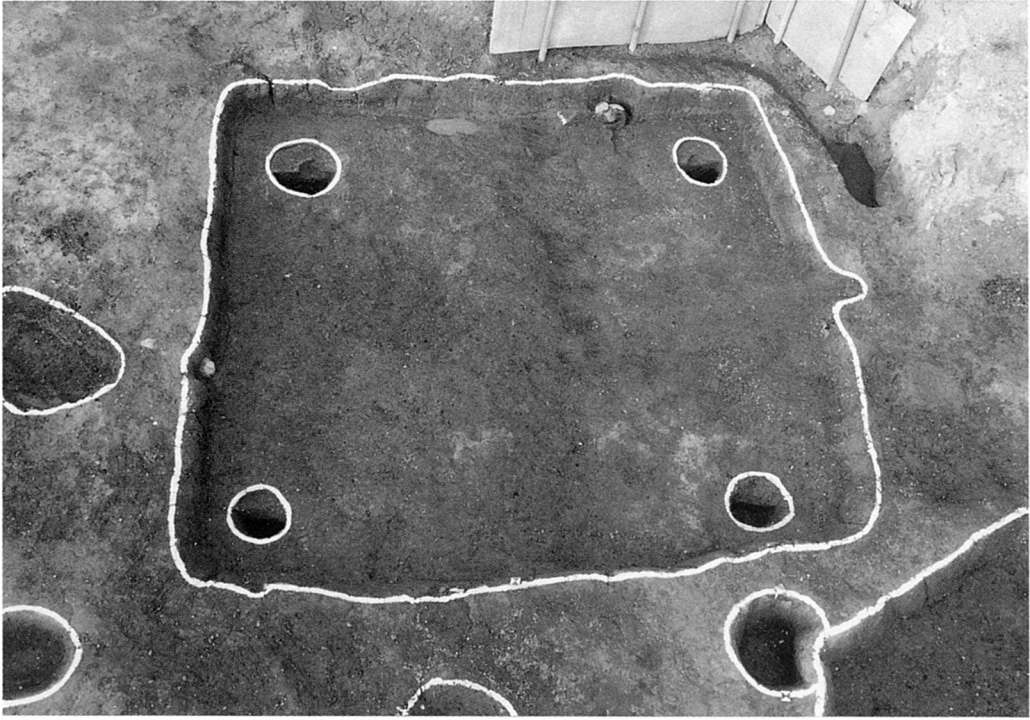
調査前風景（北から）



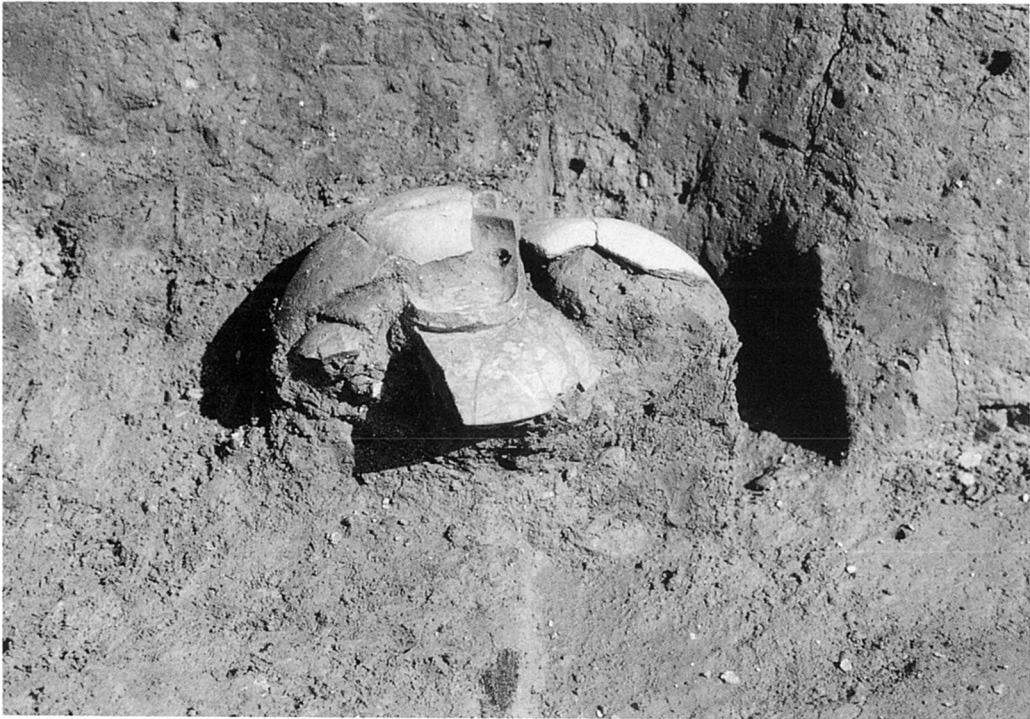
調査区全景（北西から）



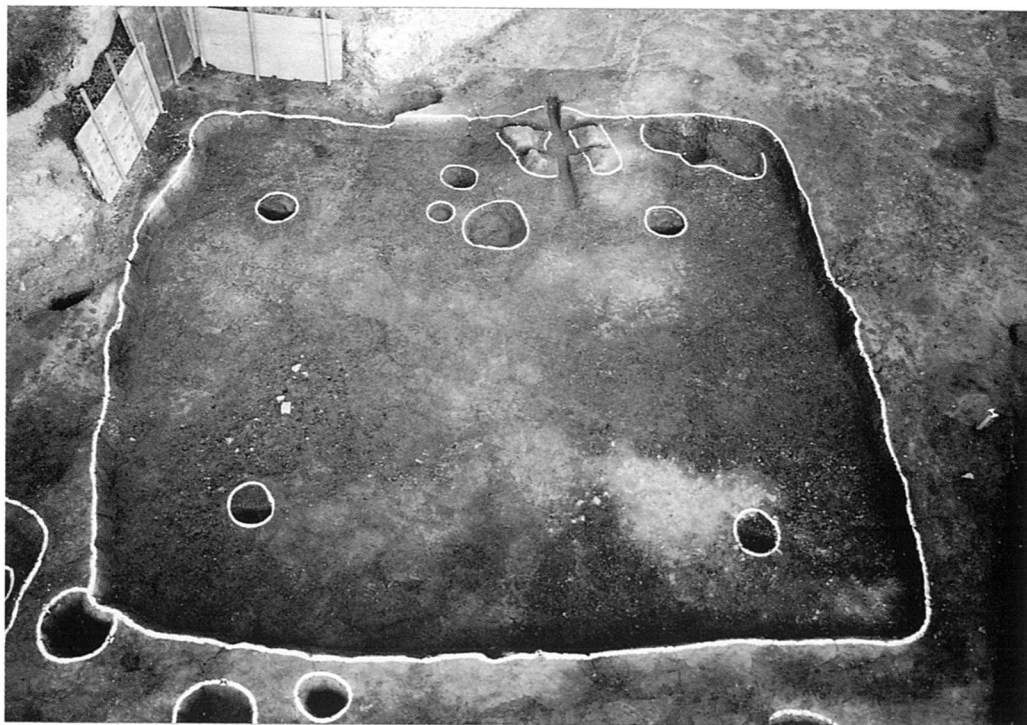
3・5・6-O D (航空写真)



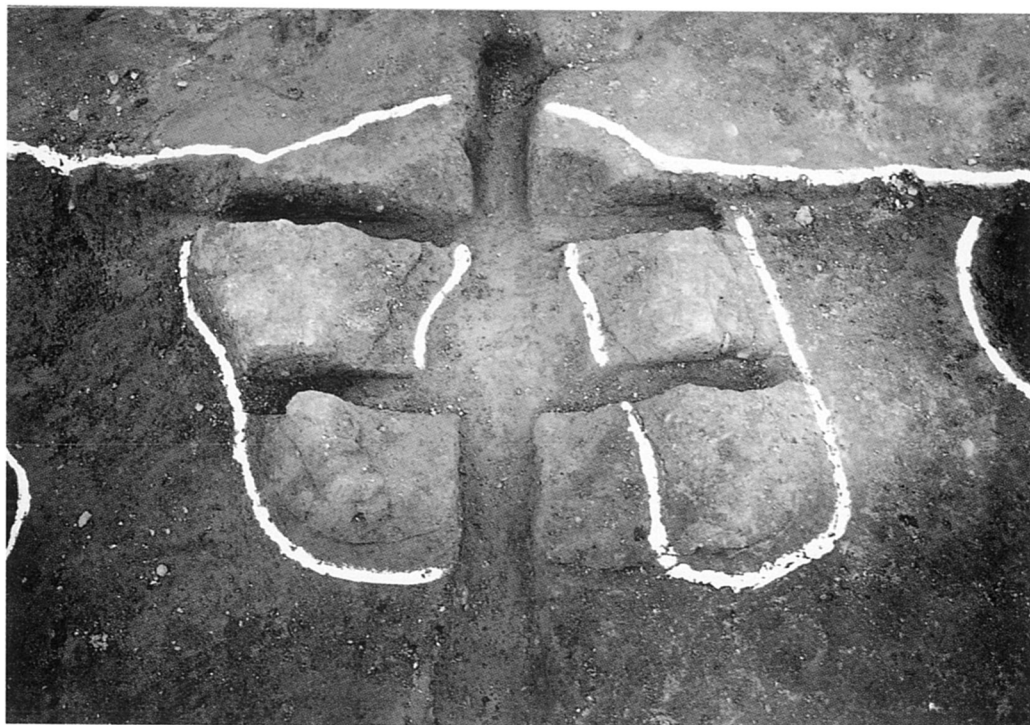
3-O D (南から)



3-O D火所の土器設置状況 (南から)



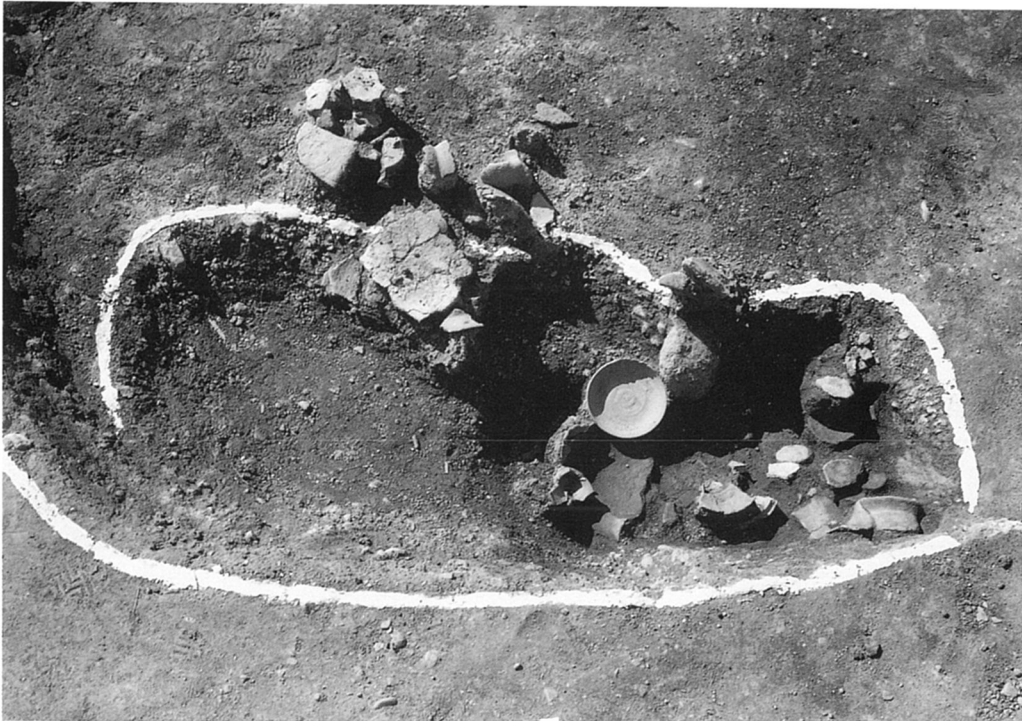
5-OD (西から)



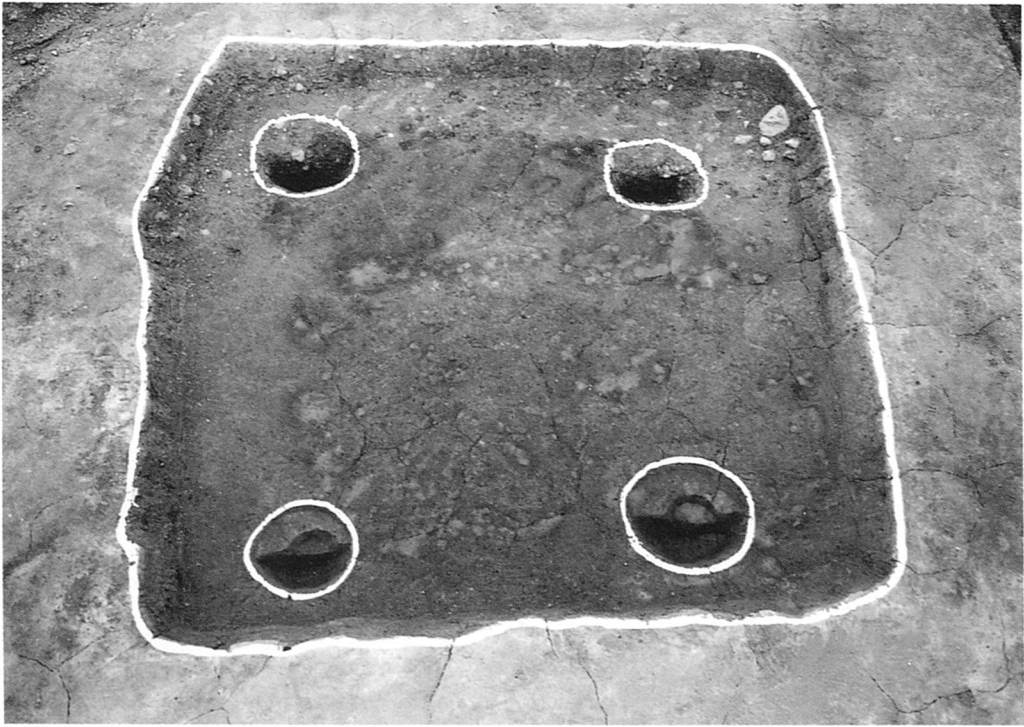
5-ODカマド (西から)



5-0D遺物出土状況（東から）



252-00遺物出土状況（東から）



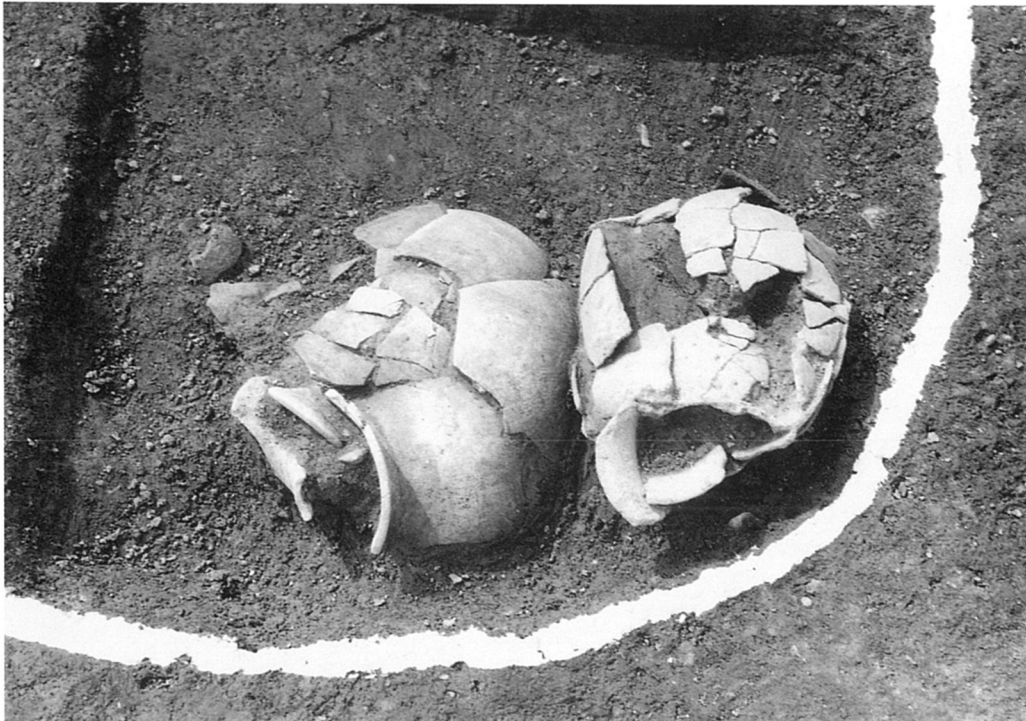
6-OD (南東から)



132-OD (北東から)



132-O D 遺物出土状況 (東から)



132-O D 遺物出土状況 (東から)



279-00 遺物出土状況 (東から)



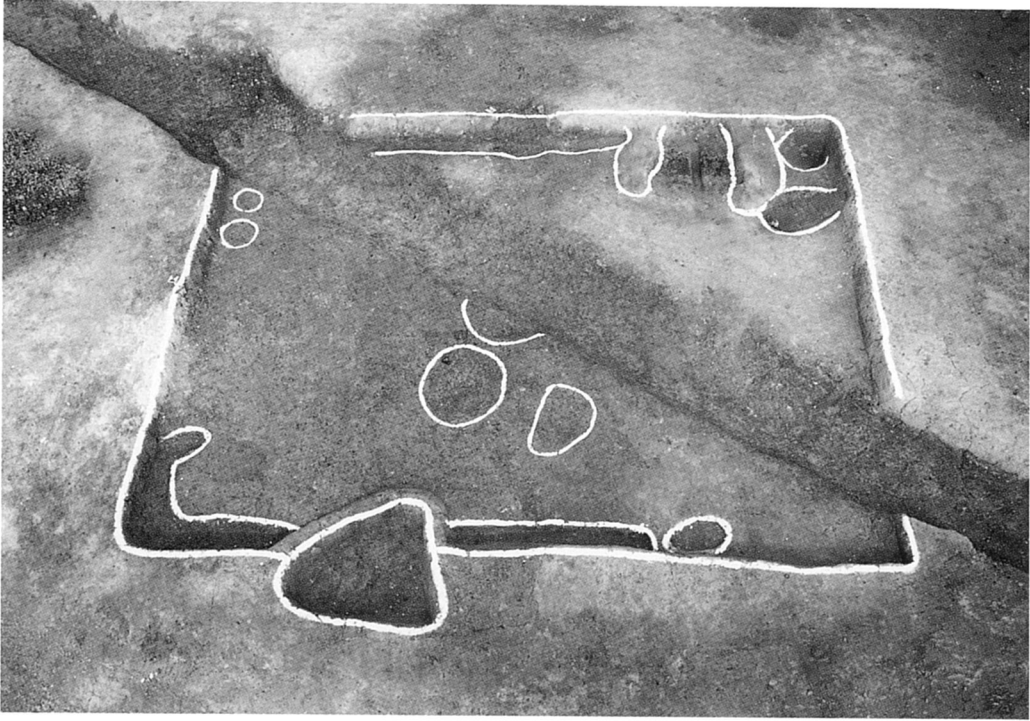
207-00 (南西から)



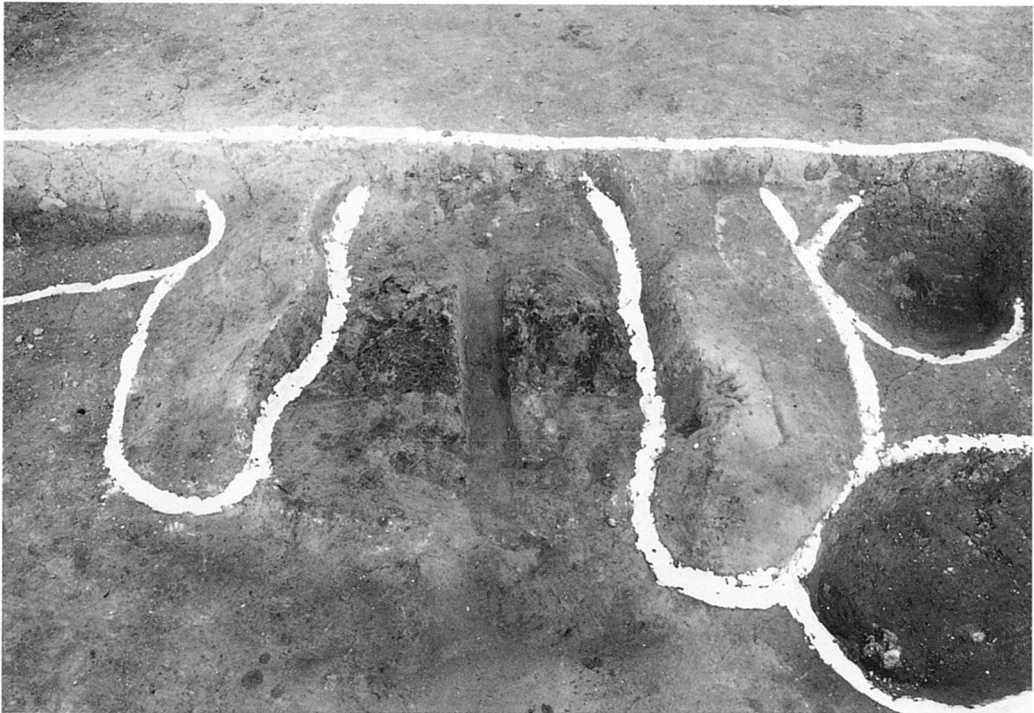
9-OD (北から)



9-ODカマド (西から)



129-O D (南西から)



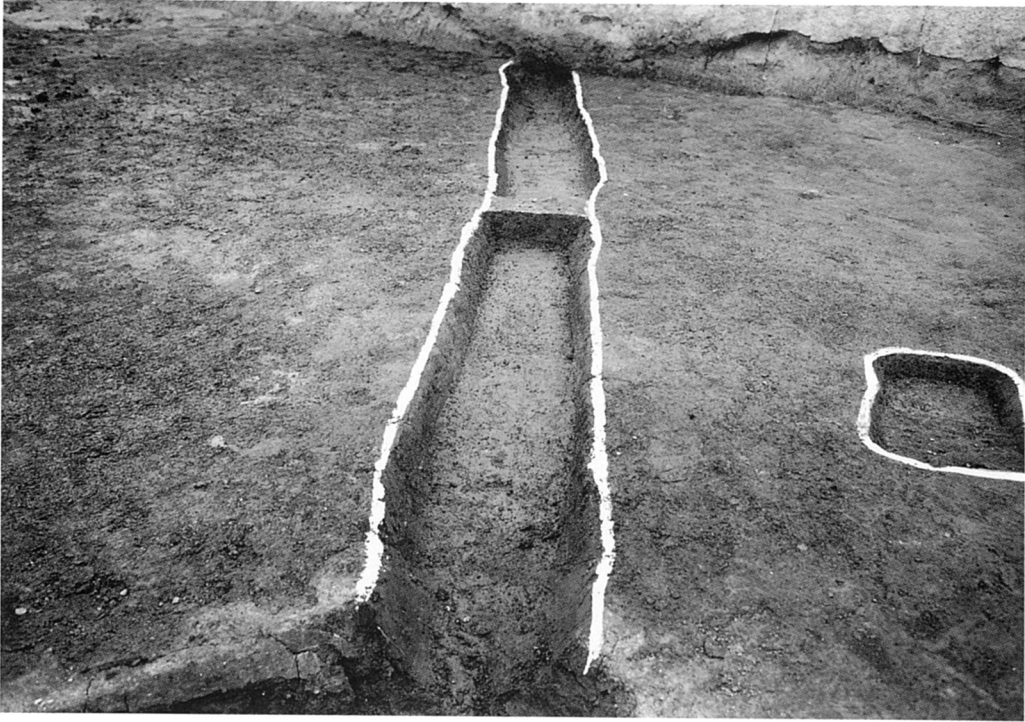
129-O D カマド (南西から)



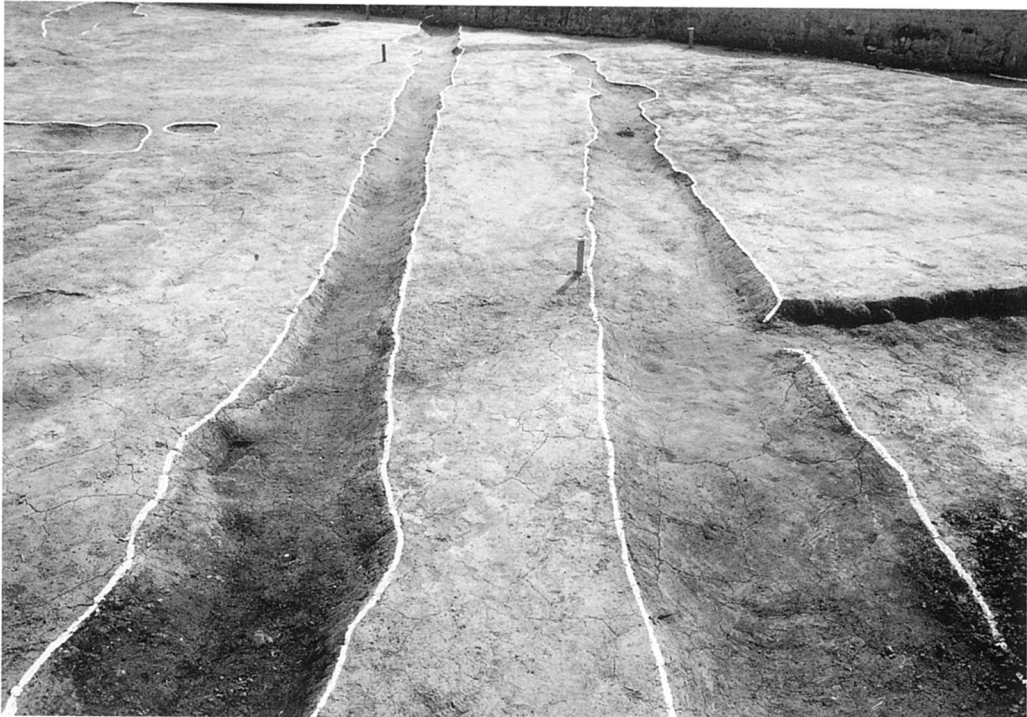
151-O S (南から)



151-O S断面 (北から)



125-OS (南から)



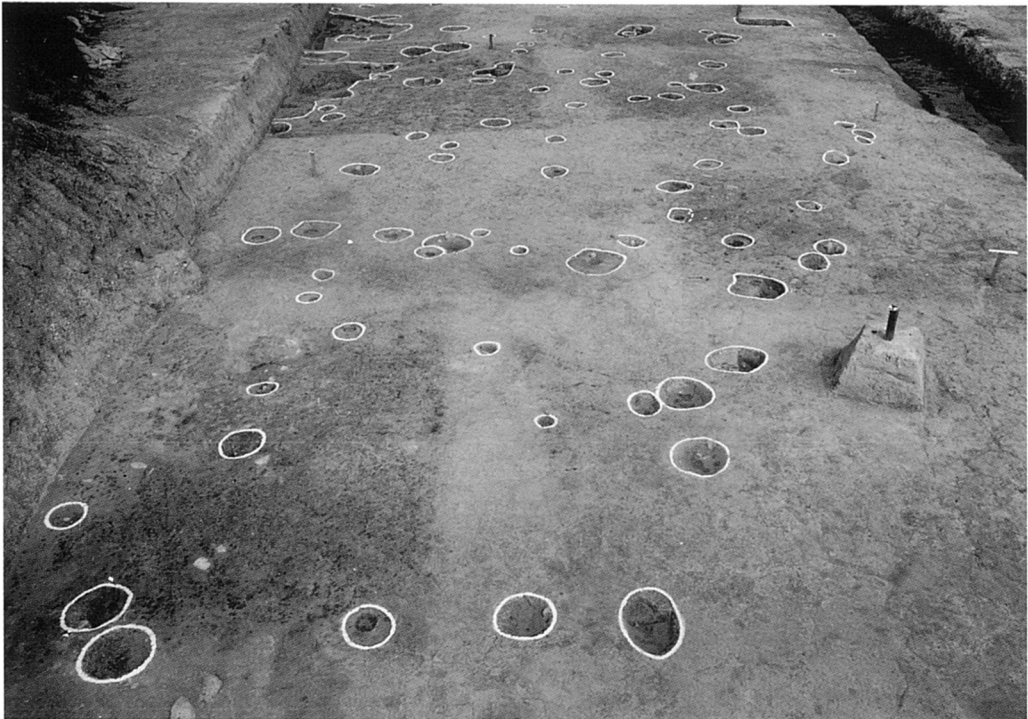
140・141-OS (北東から)



掘立柱建物址群（航空写真）



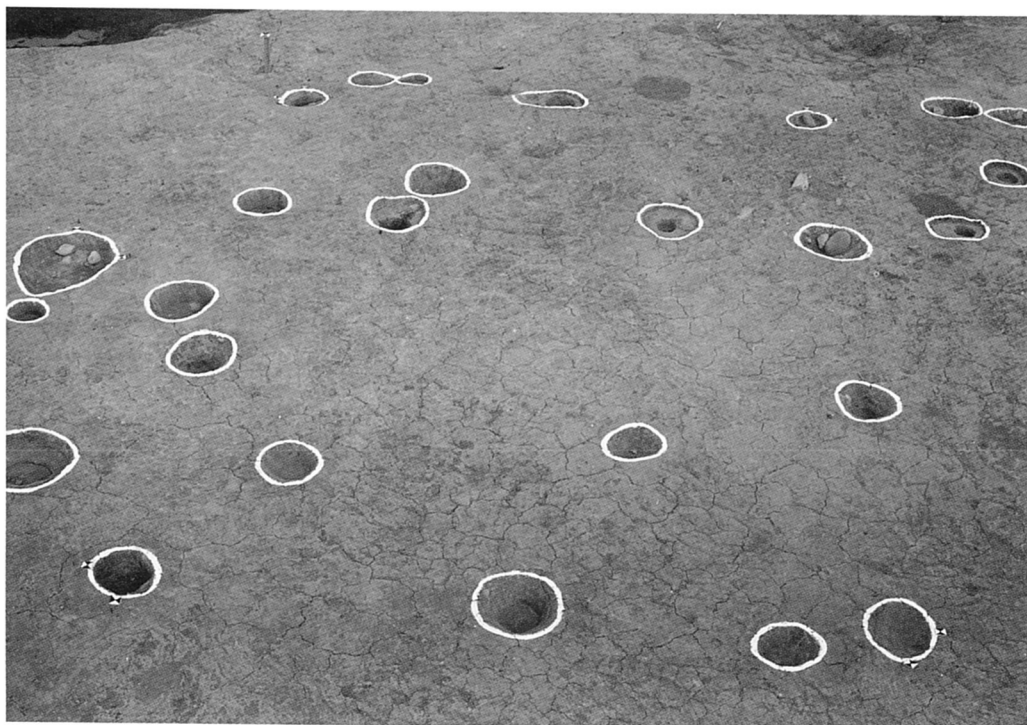
掘立柱建物址群（北から）



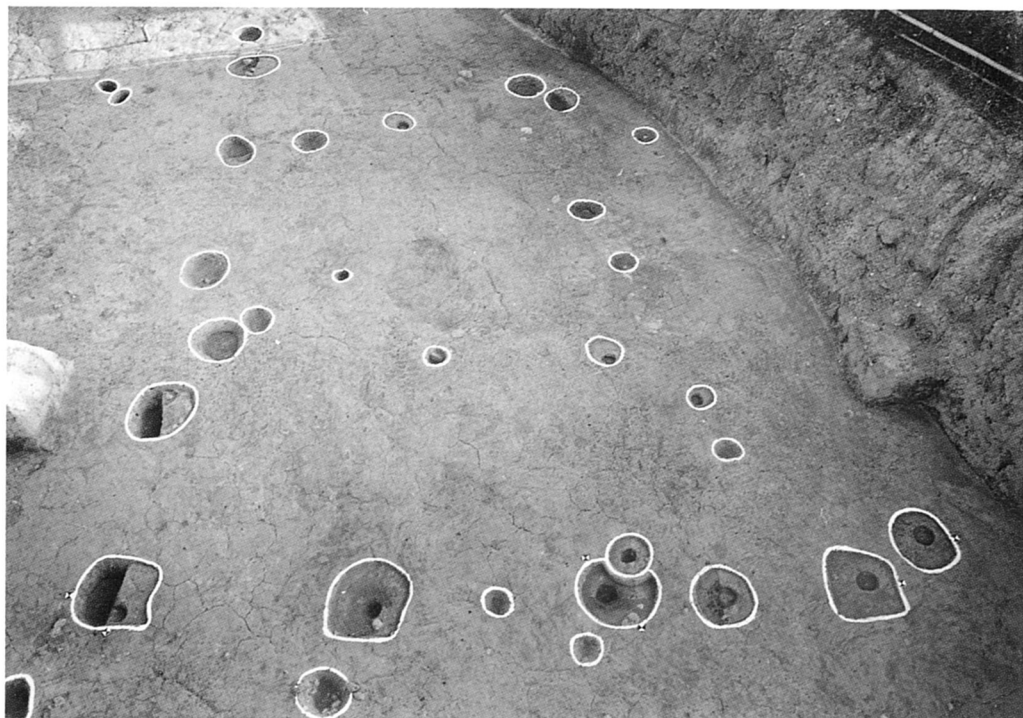
掘立柱建物址群（南から）



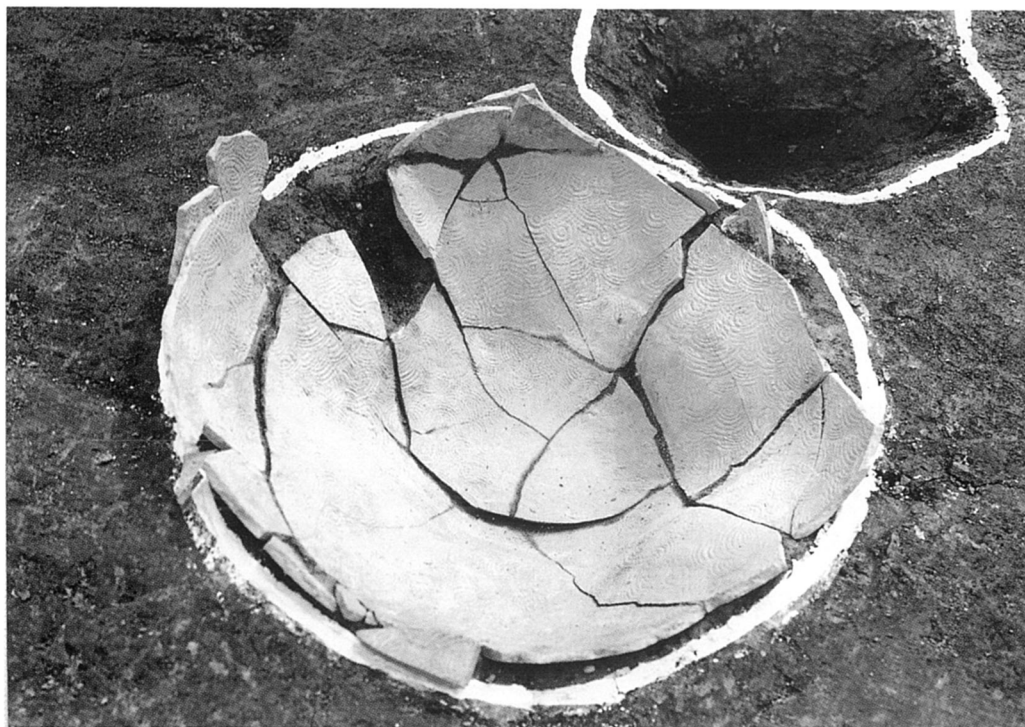
22-O B (北から)



10-O B (西から)



39・43-OB (北から)



130-00 (東から)



2-OZ (北から)



2-OZ 稲株痕 (東から)



1-OX (北西から)



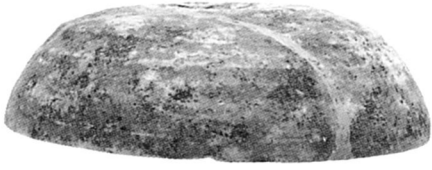
近世遺構群 (南西から)



南東拡張区（北西から）



深掘調査区（南から）



1



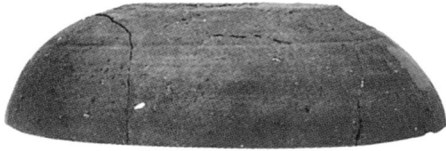
6



2



7



3



8



4



5



9



10



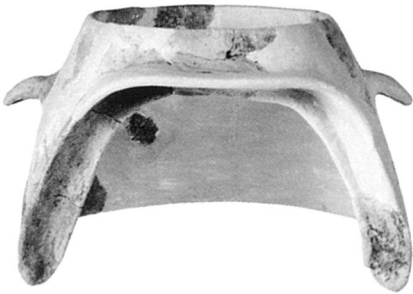
12



11



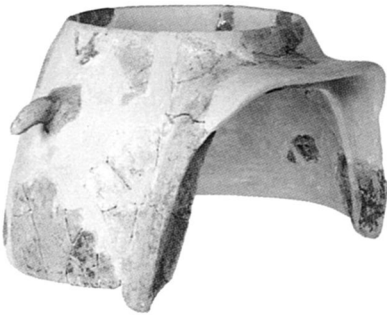
13



15



16





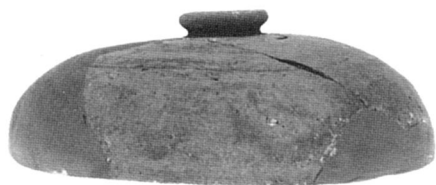
1



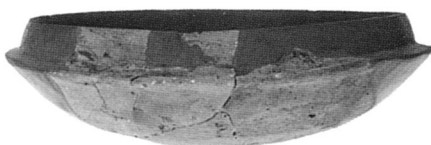
2



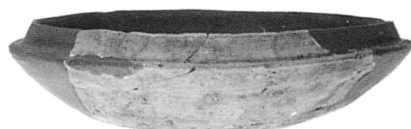
3



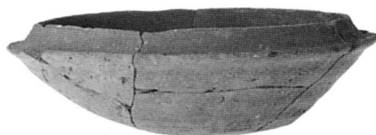
7



4



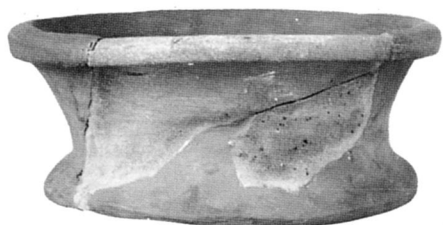
5



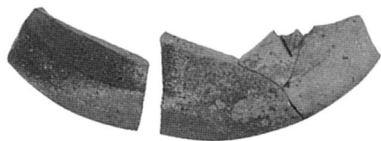
6



8



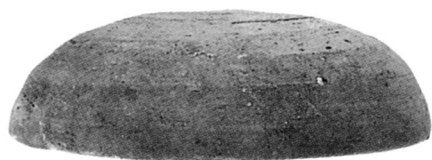
9



10



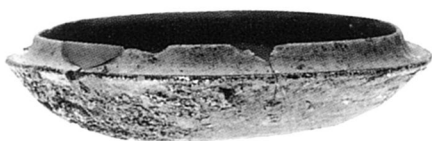
11



1



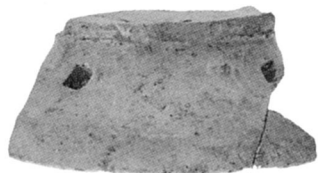
2



3



4



5



8



6



7



9



1



2



3



4



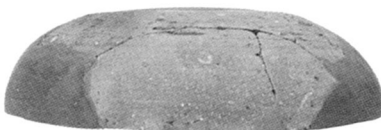
5



8



6



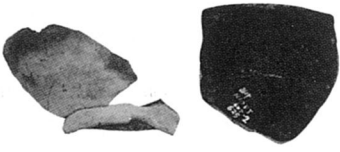
9



7



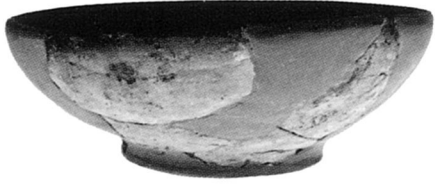
10



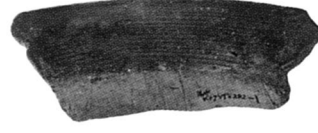
1



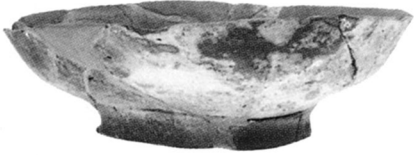
5



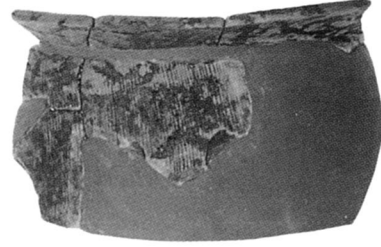
2



6



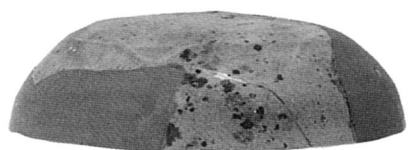
3



7



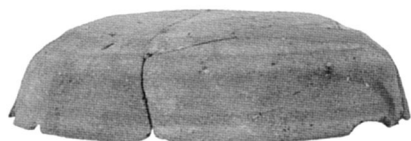
4



1



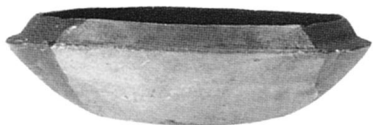
5



2



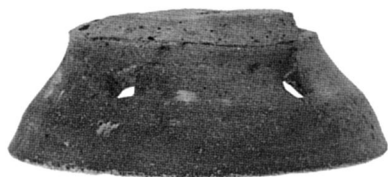
6



3



7



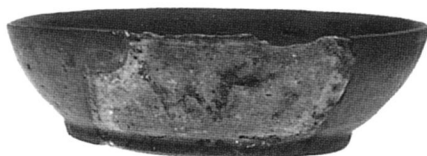
4



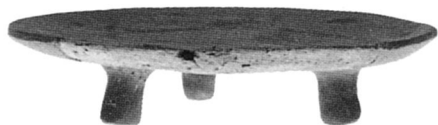
8



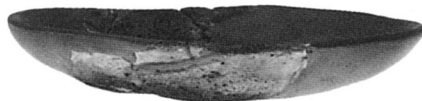
10



9



11



12



1



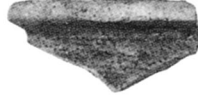
2



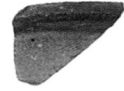
3



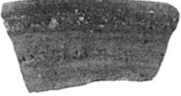
4



5



6



7



9



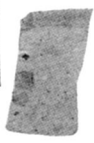
10



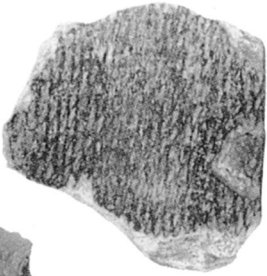
11



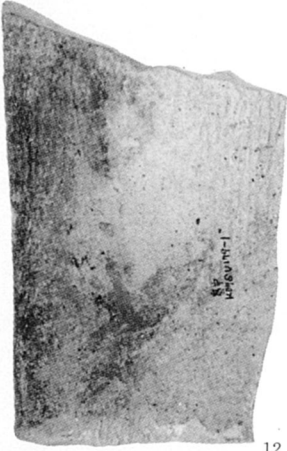
12



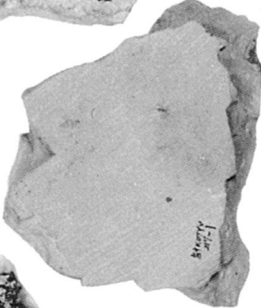
13



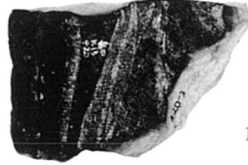
14



15



16



17



18

(財)大阪府埋蔵文化財協会調査報告書 第7輯

都市計画道路貝塚中央線建設に伴う

畠 中 遺 跡

—発掘調査報告書—

昭和61年9月30日発行

編集・発行 財団法人 大阪府埋蔵文化財協会
大阪市東区谷町2丁目36番地大手前ウサミビル

印刷 株式会社 中島弘文堂印刷所

