

SE3 土層断面



SE4 土層断面



SE3 土層断面



SE9 土層断面



SE6・SE9 検出状況



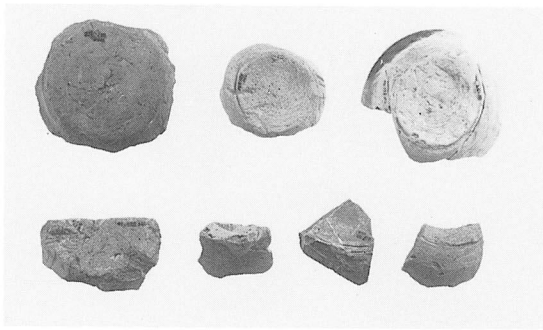
SE6 土層断面



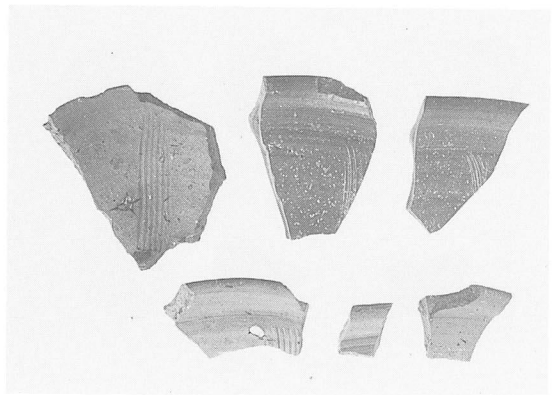
柱穴土層断面



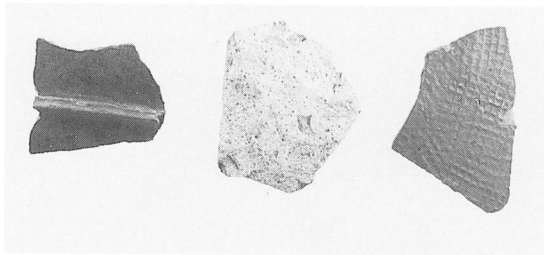
SB6 銅銭出土状況



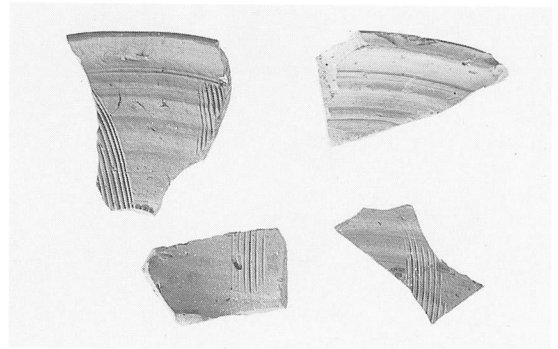
1~7



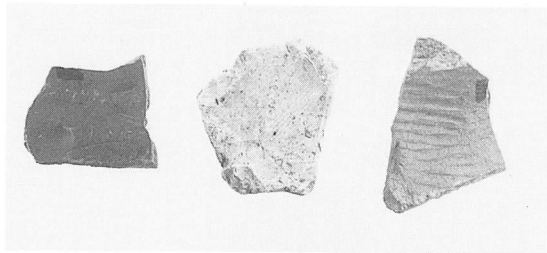
13~18



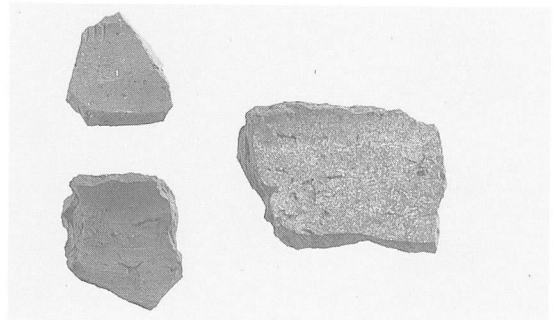
8~10 (外面)



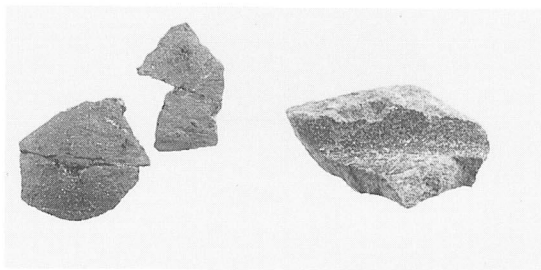
19~22



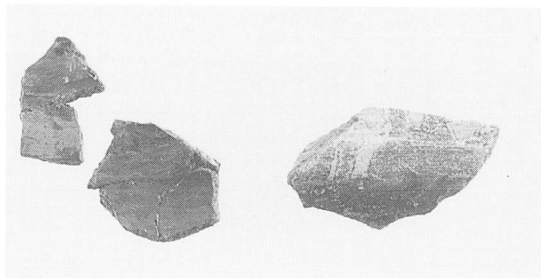
8~10 (内面)



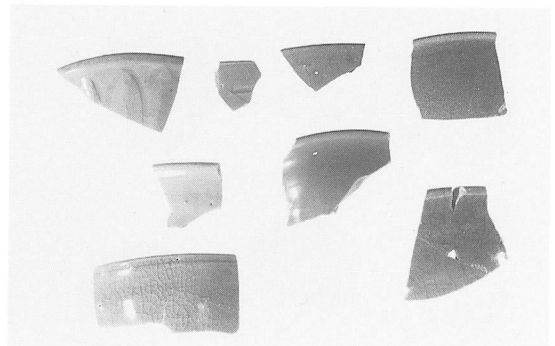
23~25



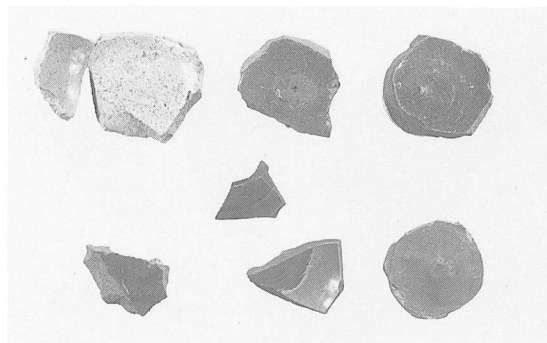
11·12 (外面)



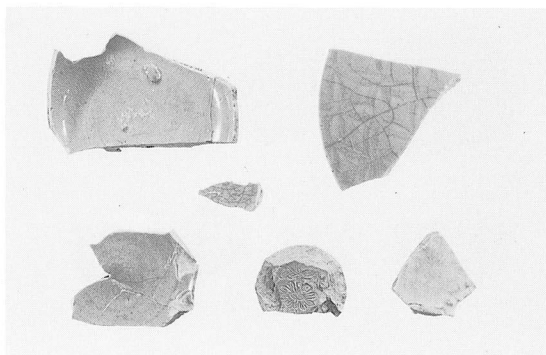
11·12 (内面)



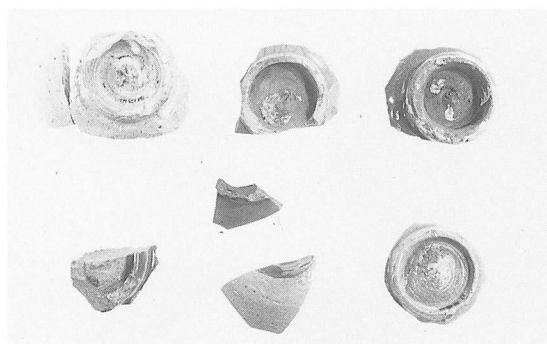
26~33



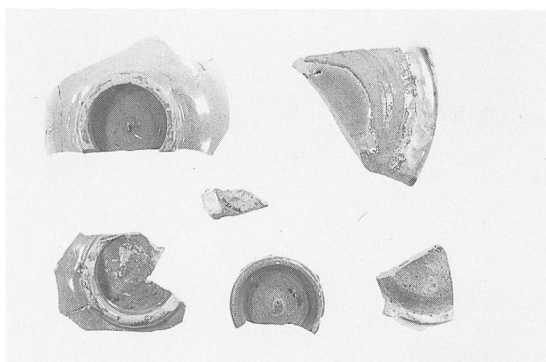
34~40 (内面)



48~53 (内面)



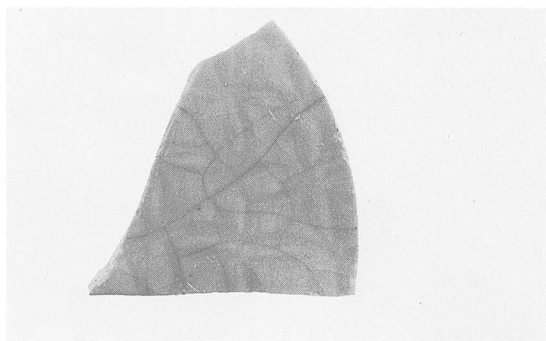
34~40 (外面)



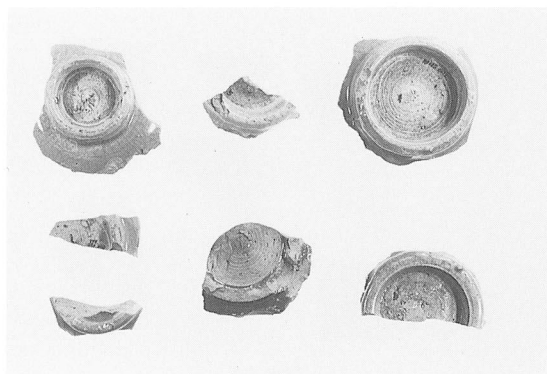
48~53 (外面)



41~47 (内面)



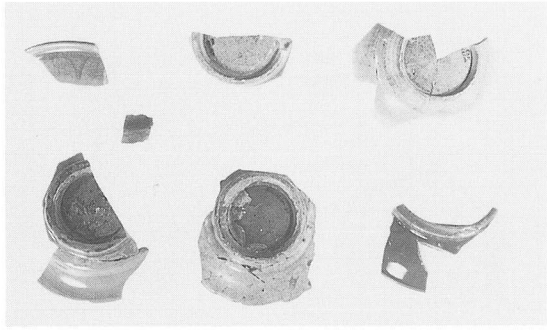
53 (内面)



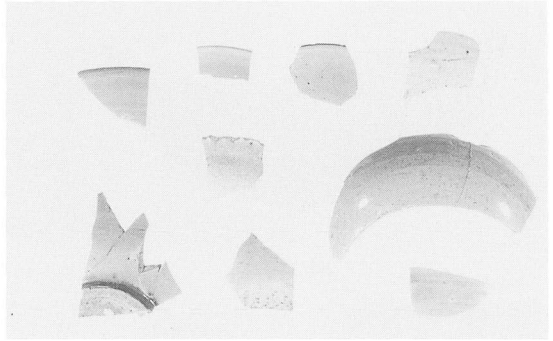
41~47 (外面)



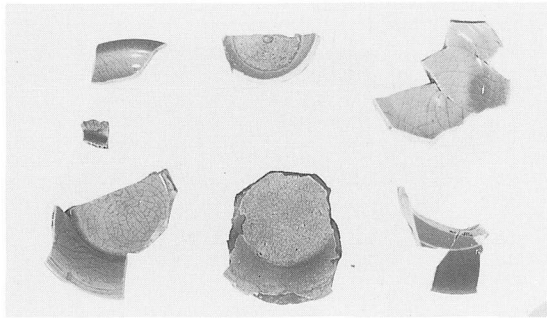
53 (外面)



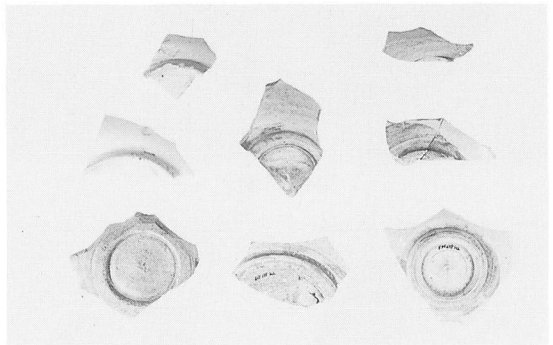
54~60 (外面)



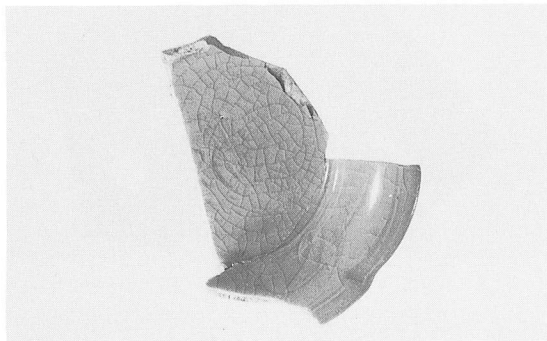
61~68



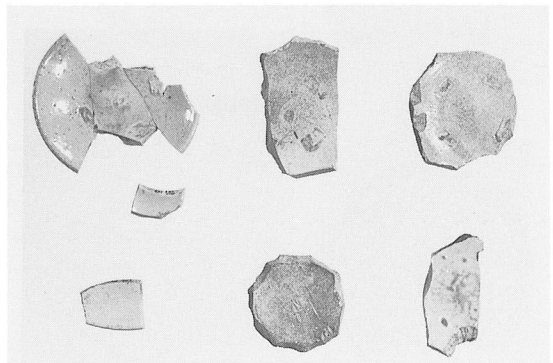
54~60 (内面)



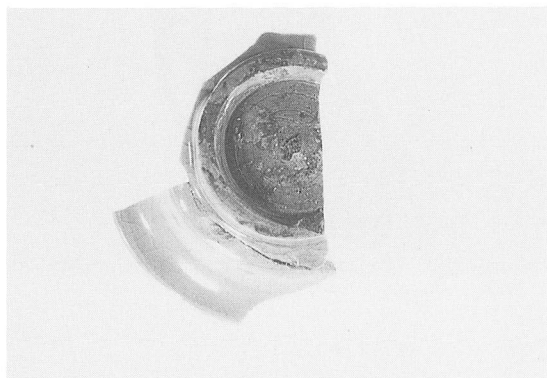
69~75・77



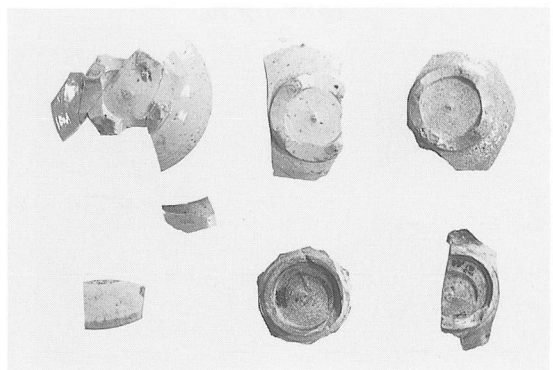
55 (内面)



76・78~82・85 (内面)

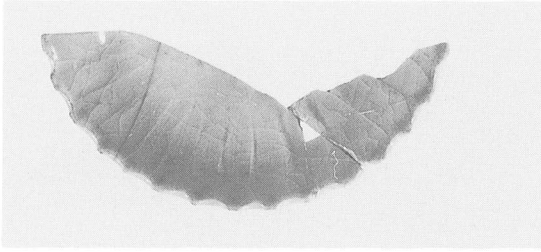


55 (外面)

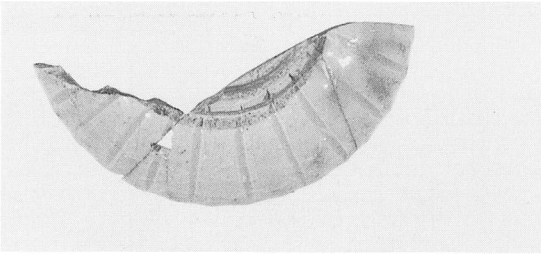


76・78~82・85 (外面)

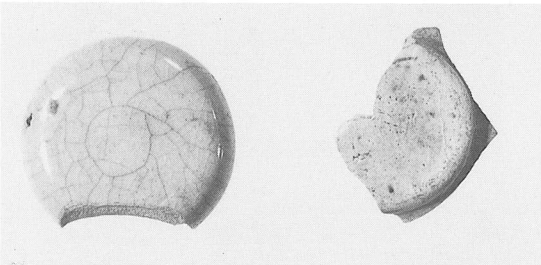
图版20



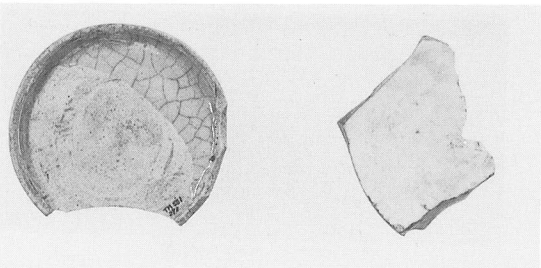
84 (内面)



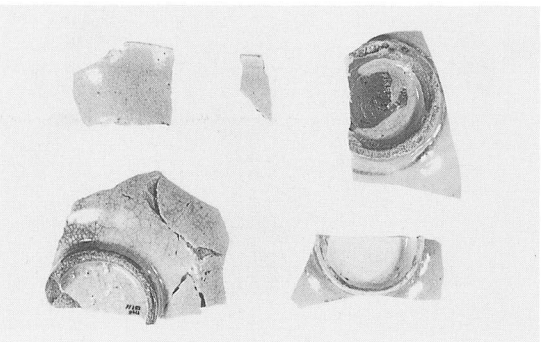
84 (外面)



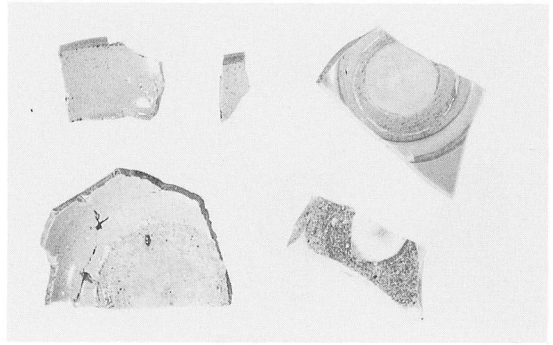
86 · 87 (外面)



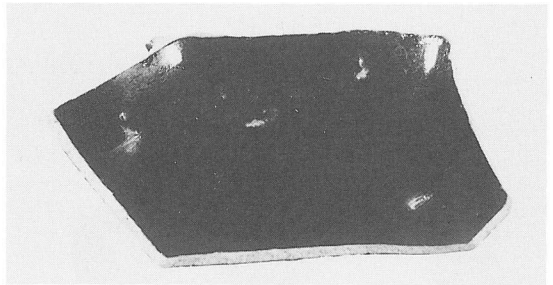
86 · 87 (内面)



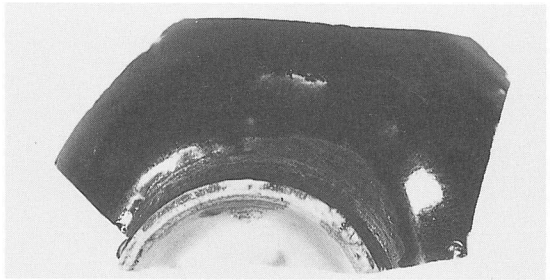
110 · 113 · 114 · 116 · 117 (外面)



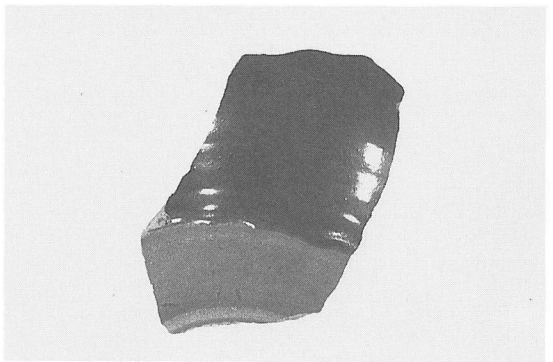
110 · 113 · 114 · 116 · 117 (内面)



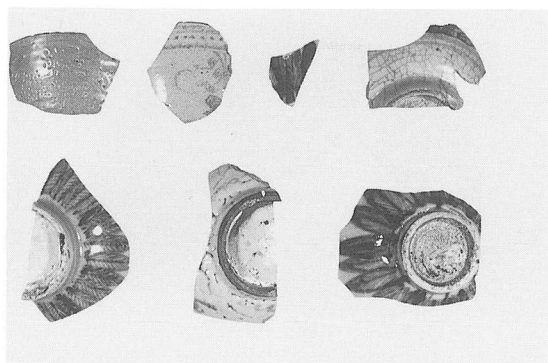
94 (内面)



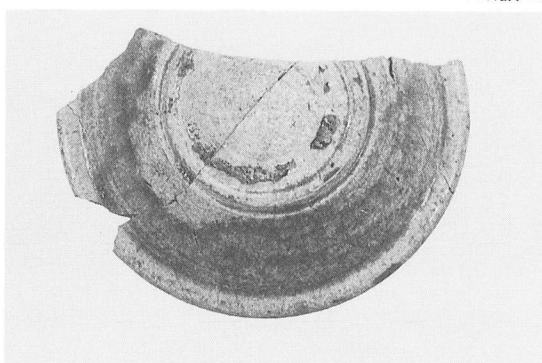
94 (外面)



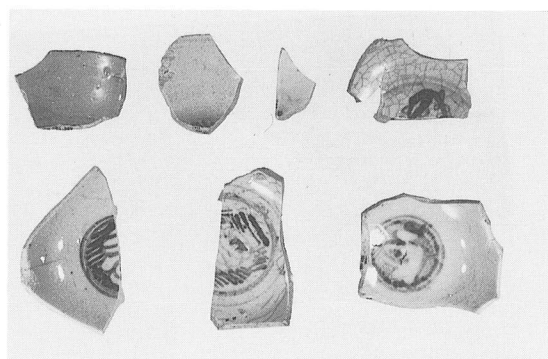
111



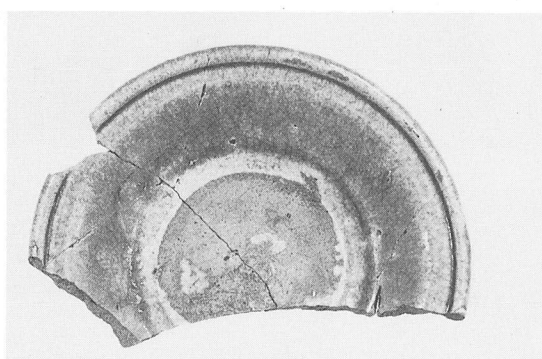
88~93·95 (外面)



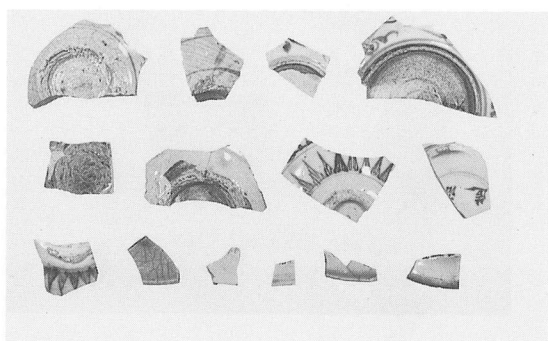
112 (外面)



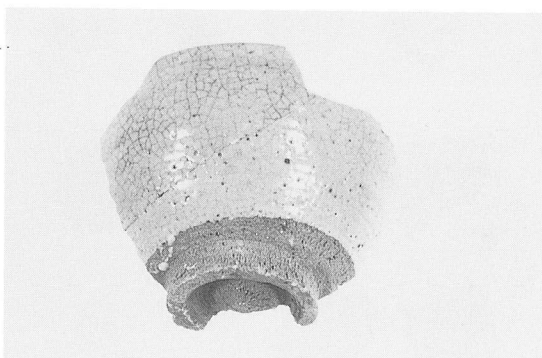
88~93·95 (内面)



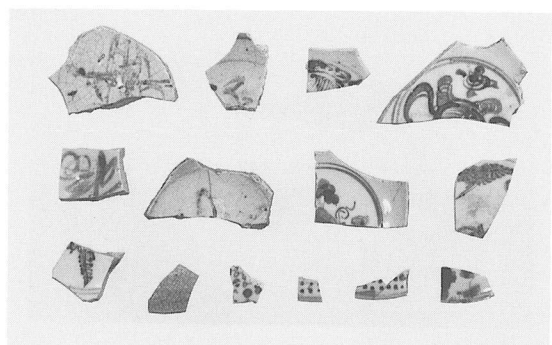
112 (内面)



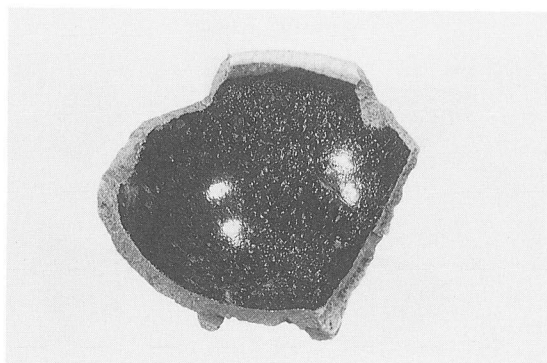
96~109 (外面)



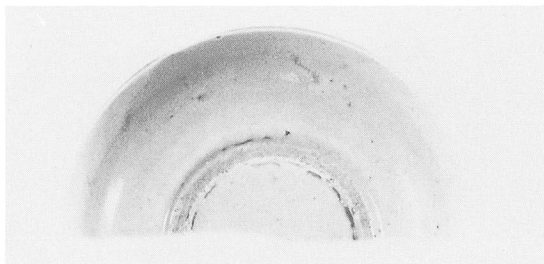
118 (外面)



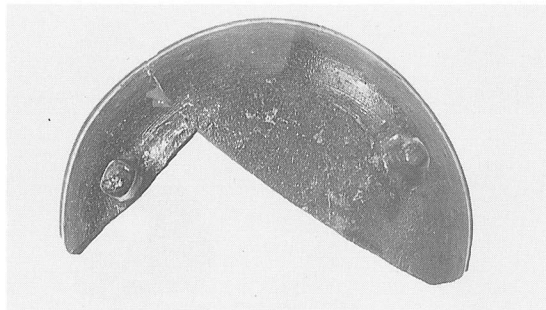
96~109 (内面)



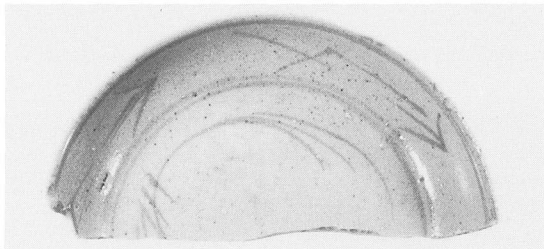
118 (内面)



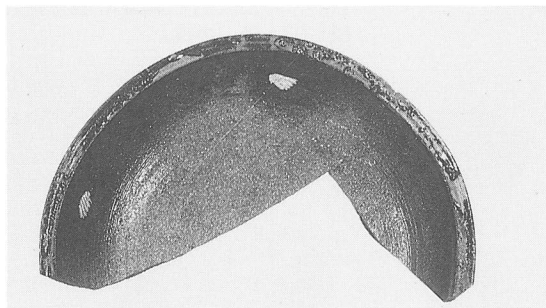
115 (外面)



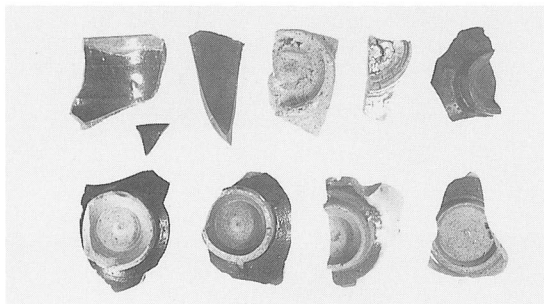
131 (外面)



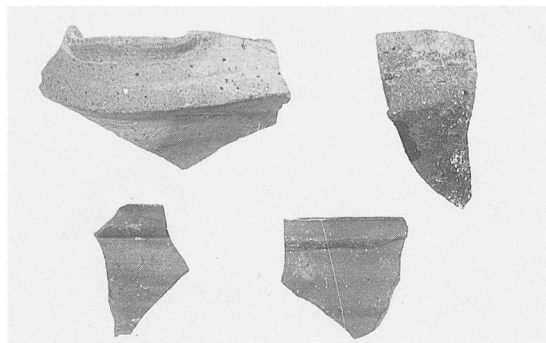
115 (内面)



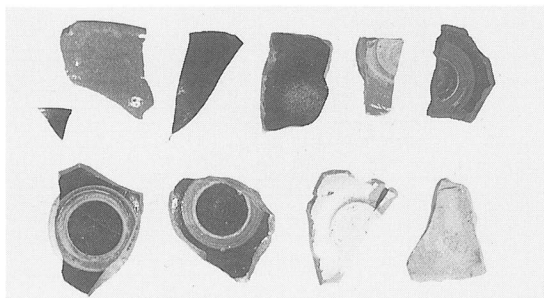
131 (内面)



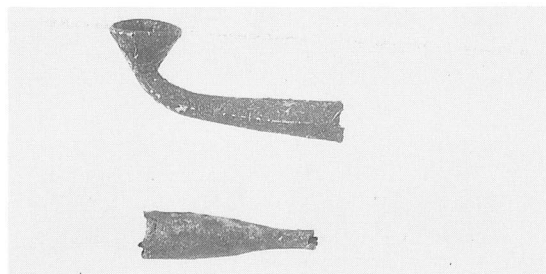
120~129 (外面)



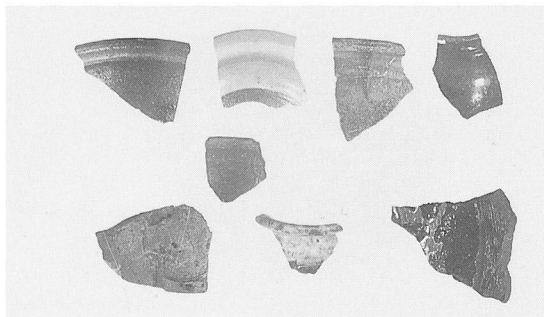
154・155・163・164



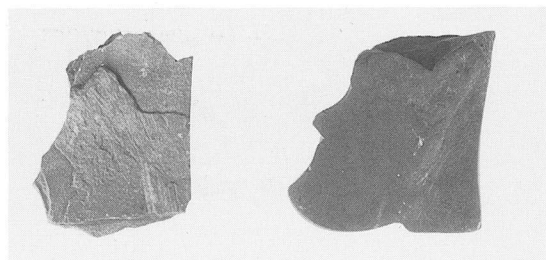
120~129 (内面)



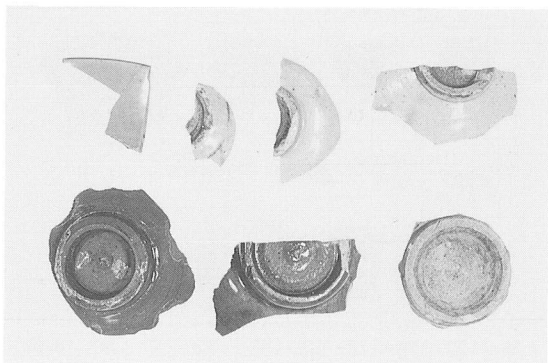
キセル 148・149



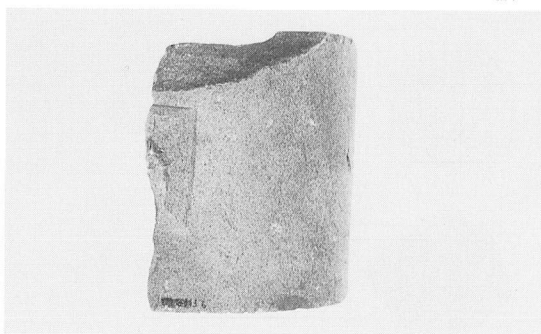
130・132~138



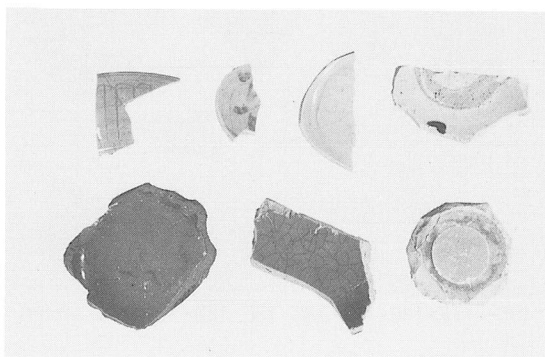
165・166



156~162 (外面)



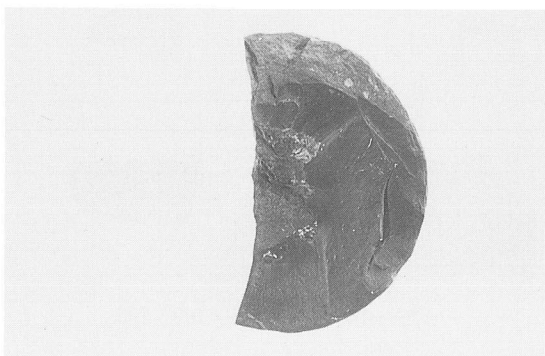
142 (側面)



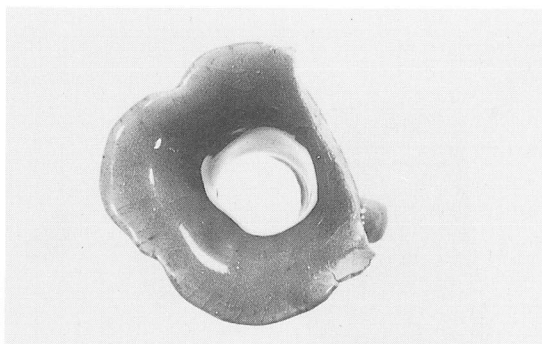
156~162 (内面)



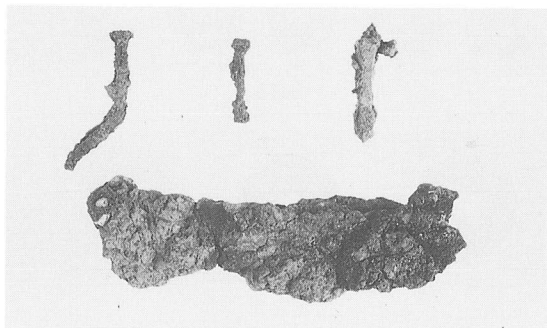
142 (底面)



167



168 (上面)



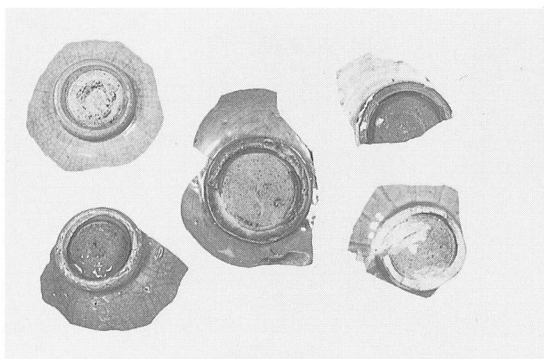
SEI



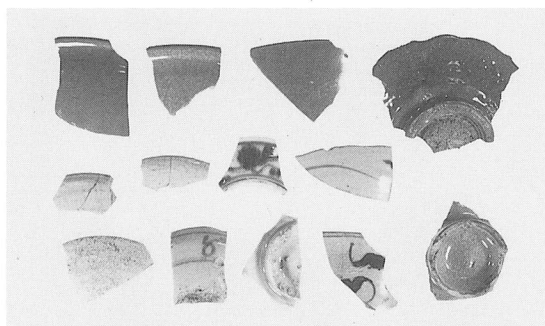
168 (側面)



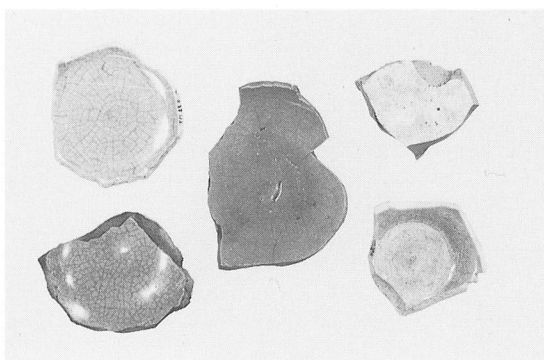
图版24



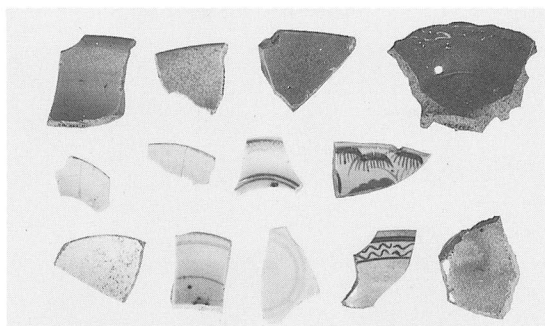
169・173~175・182 (外面)



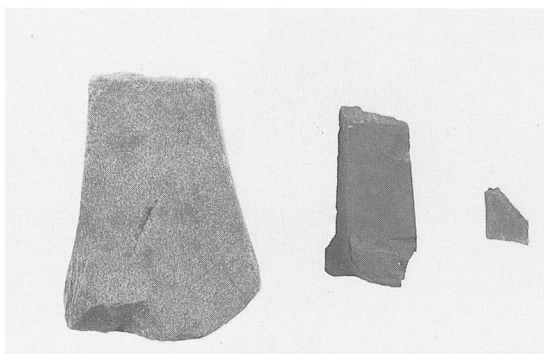
170~172・176・178・183・186~188・191・192 (内面)



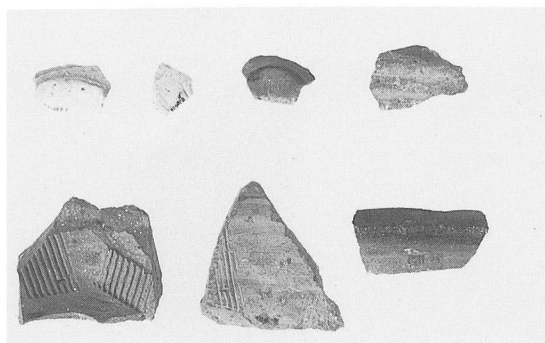
169・173~175・182 (内面)



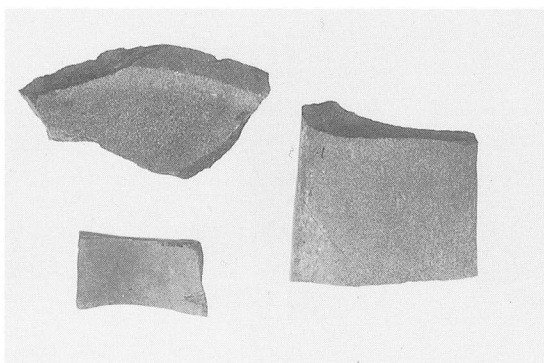
170~172・176・178・183・186~188・191・192 (外面)



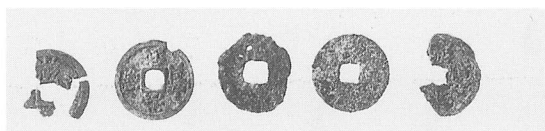
139~141



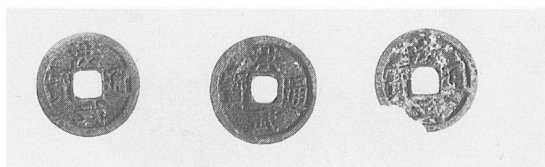
179~181・184・185・189・190



193~195



SB6



SE 2



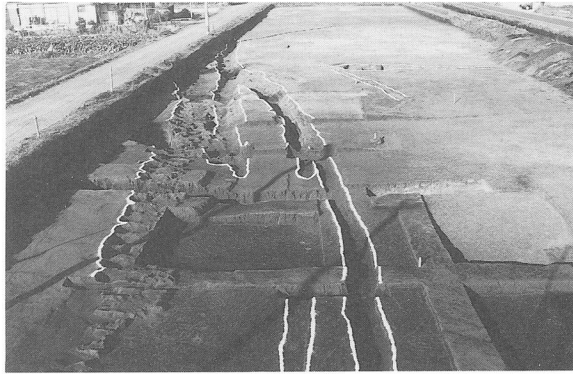
遺構の検出状況 (SE29付近)



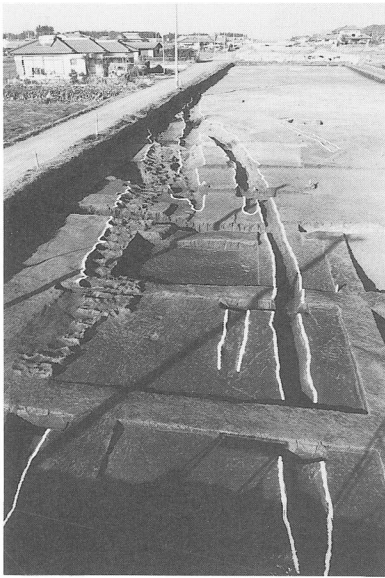
発掘途中のようす



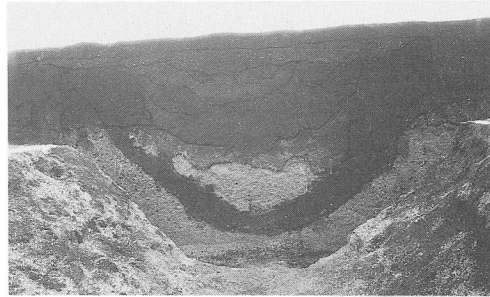
発掘完了の状態



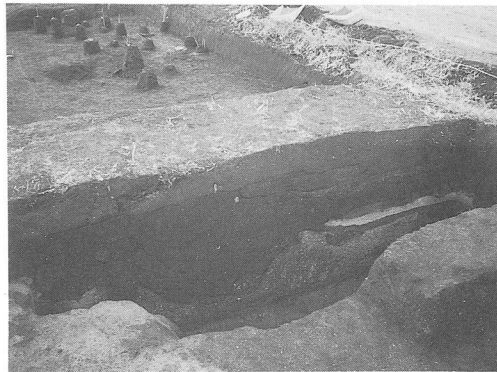
SE30・SE29・SE32



SE30・29・32 (南から北)



SE29 断面



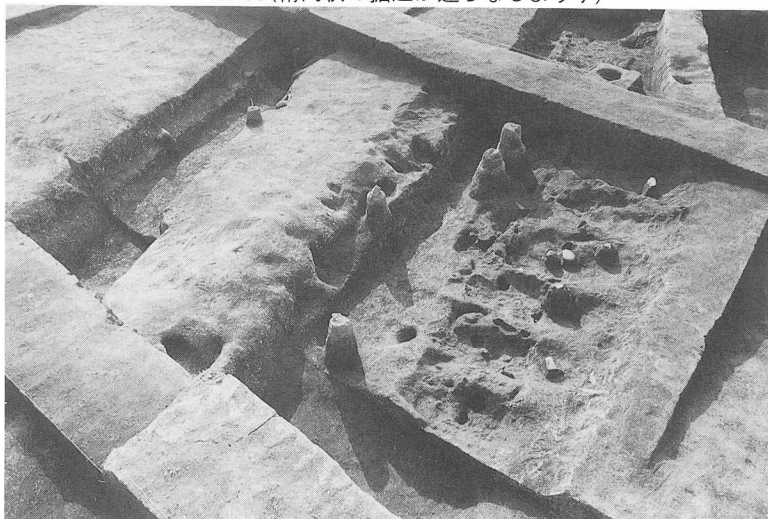
断面



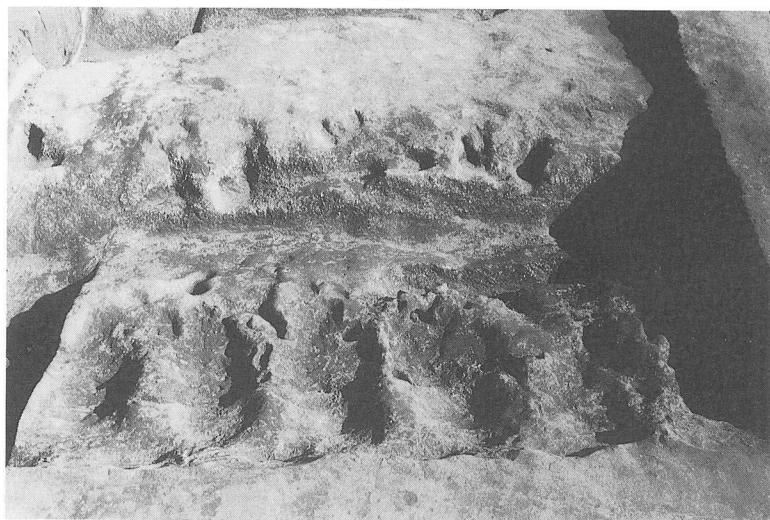
SE31・SE29 断面



SE30(楕円状の掘込が連なるようす)



同上

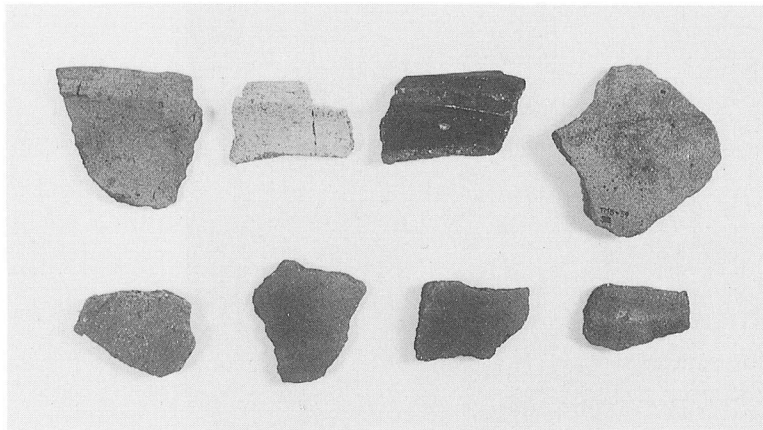


同上

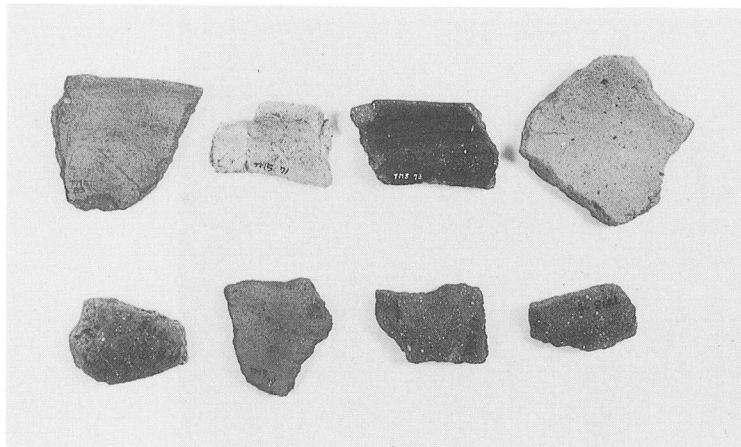
V区出土遺物



土師器 (坏・皿)

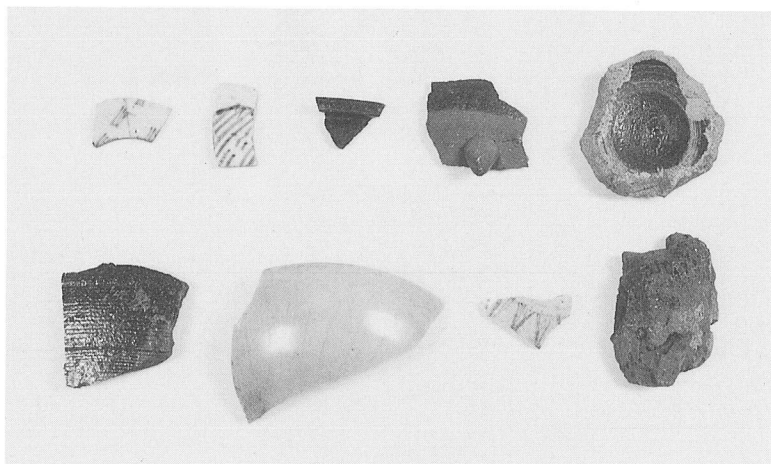


(表)

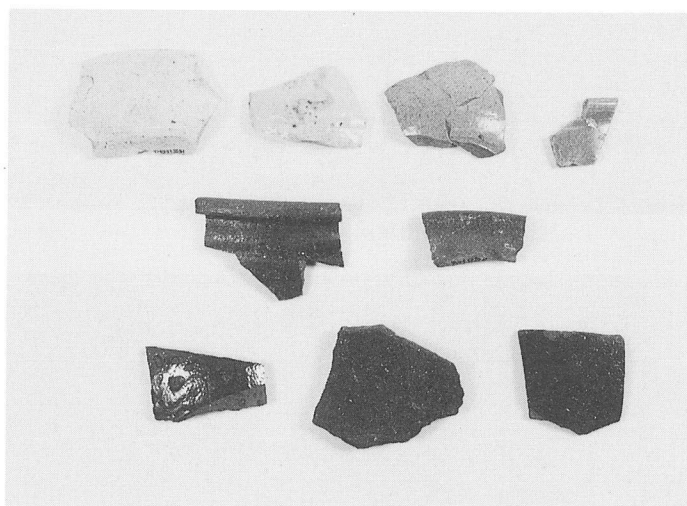


縄文後期土器片

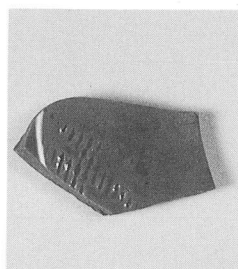
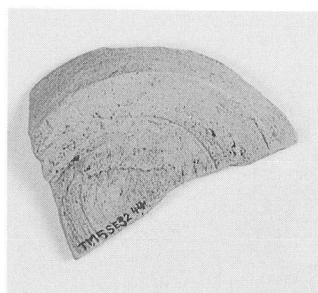
(裏)



29号溝状遺構出土遺物



30号溝状遺構出土遺物



32号溝状遺構出土遺物



Ⅵ区 遺構検出状況



遺構検出状況



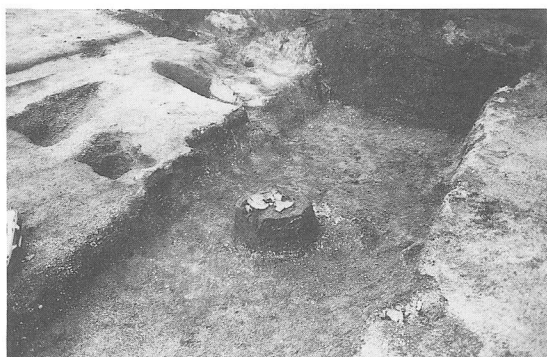
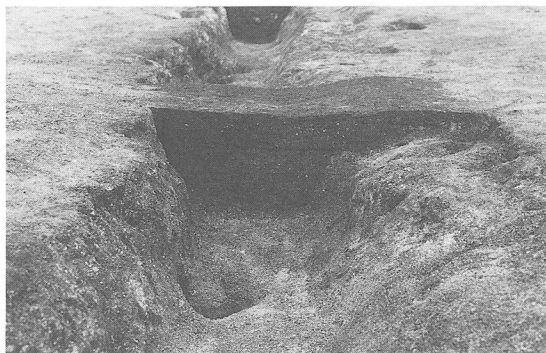
SE33・35・37 (南より)



SE33・35・37土層断面



SE33・35土層断面



SE36土師質土器検出状況



SE36



SE36土層断面



VI区南 北壁土層断面

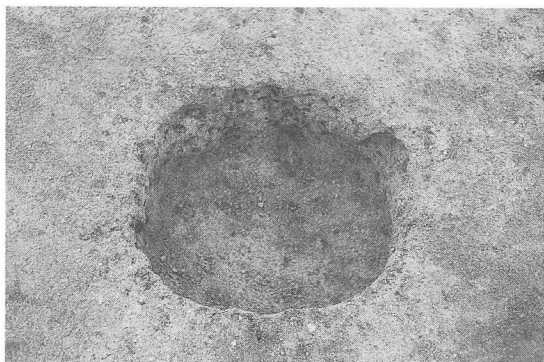




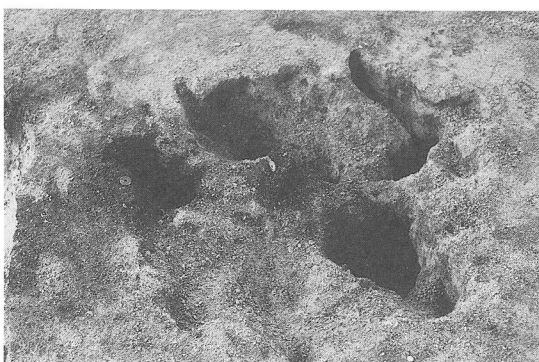
SE41 (硬化面)



SE41 土層断面



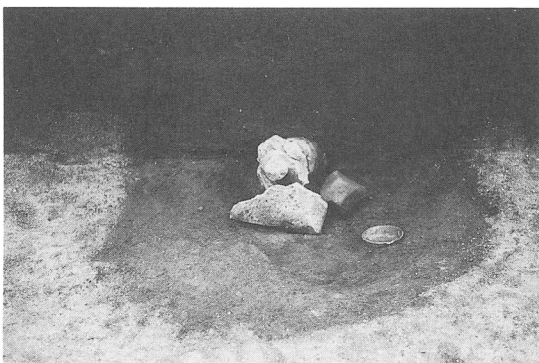
SC 5



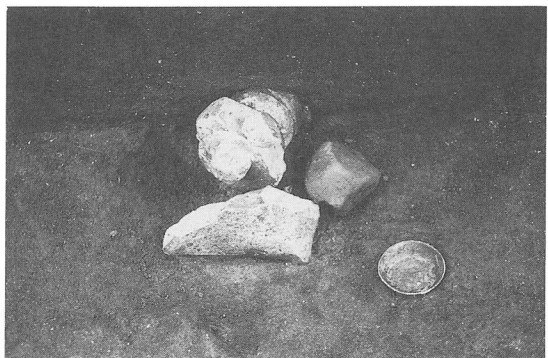
SC 8



SC 2



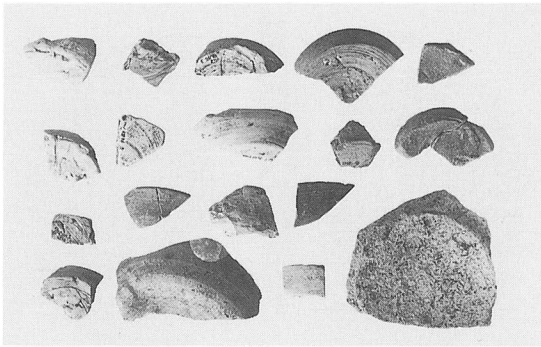
4号井戸検出状況



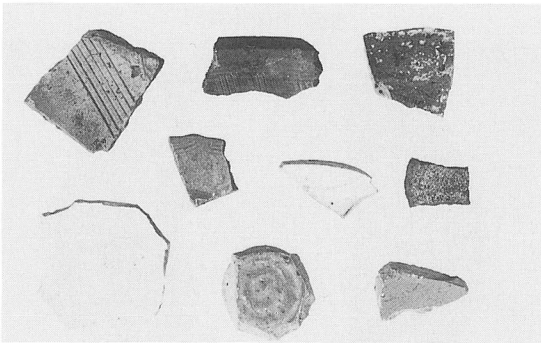
4号井戸遺物出土状況



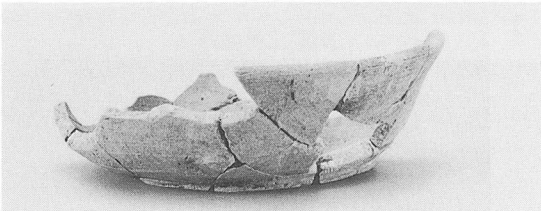
発掘状況



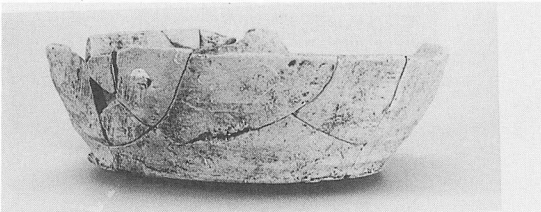
VI区 1~5・12~19・24~28



VI区 6~9・11・29・30・32



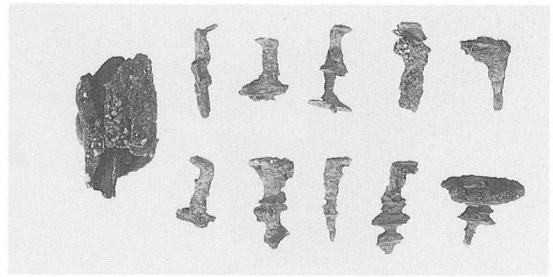
VI区 23



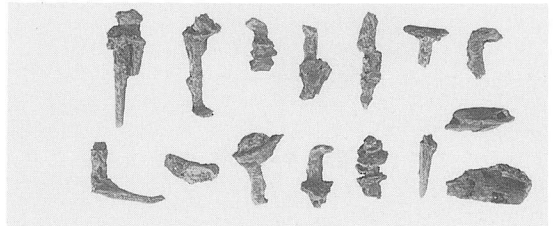
VI区 10



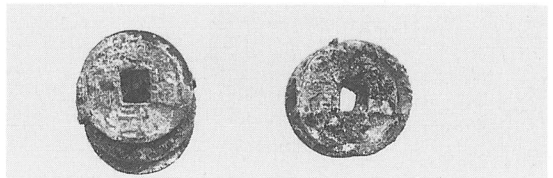
11



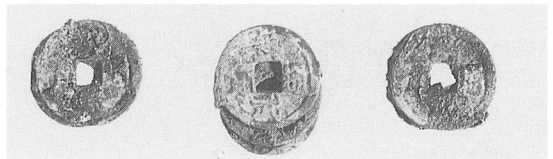
SC3



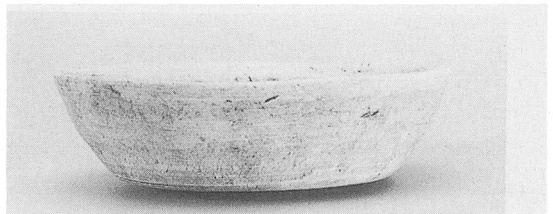
SC3



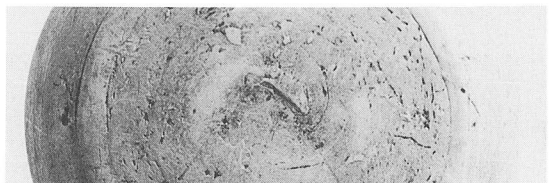
SC2



SC7



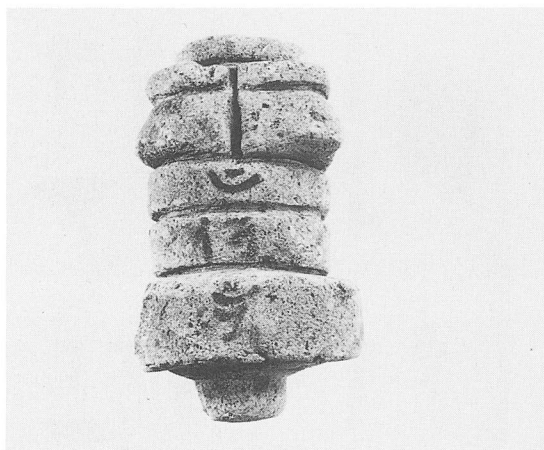
VI区 4号井戸22 (側面)



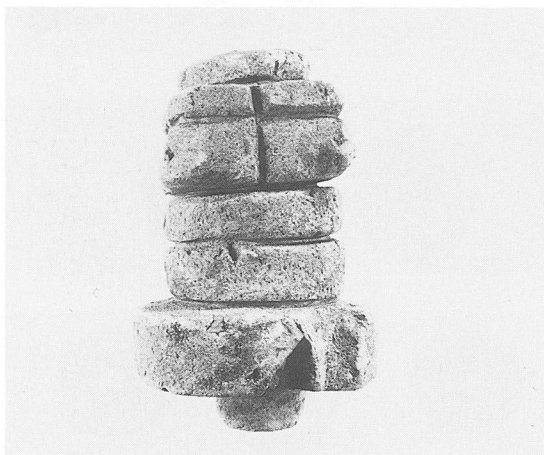
VI区 4号井戸22 (底面)



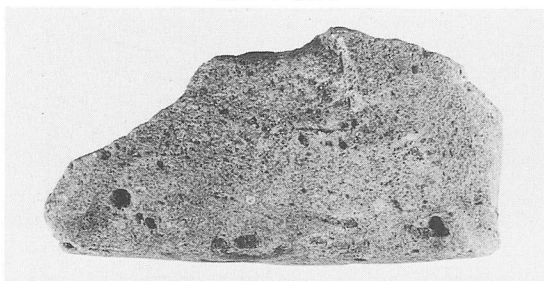
VI区 4号井戸



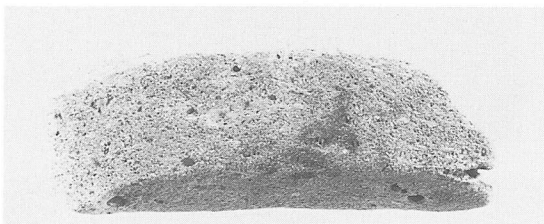
Ⅵ区 4号井戸



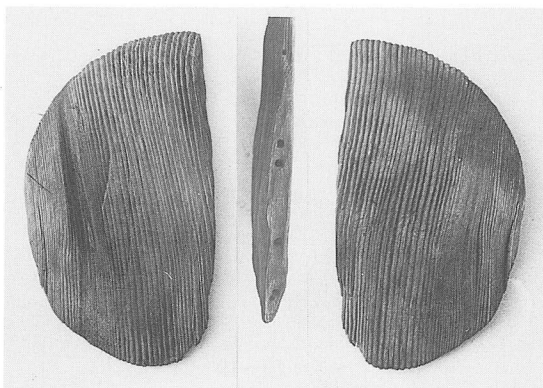
Ⅵ区 4号井戸



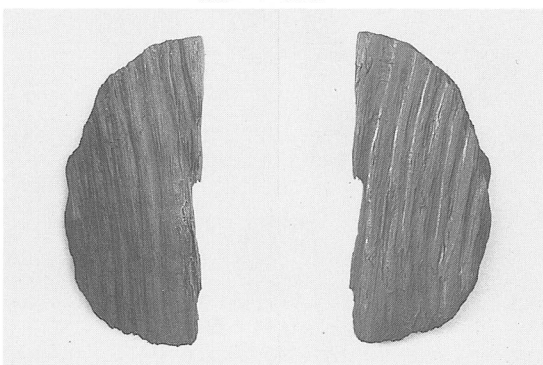
Ⅵ区 4号井戸



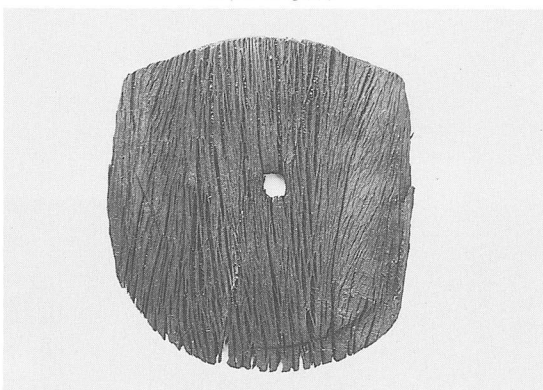
Ⅵ区 4号井戸



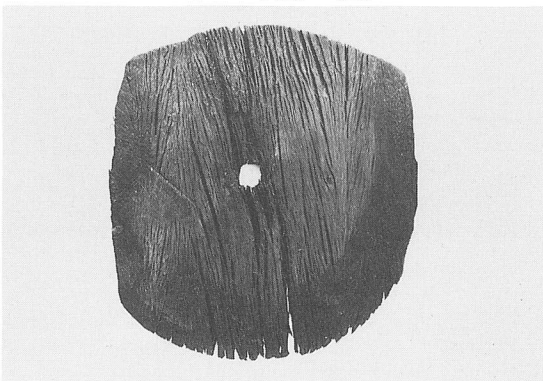
Ⅳ区 1号井戸



Ⅳ区 2号井戸



Ⅳ区 2号井戸 (表)



Ⅳ区 2号井戸 (裏)



Ⅶ～Ⅹ区 遠景



Ⅶ～Ⅹ区 遠景



Ⅸ区 遺構検出状況



Ⅹ区 遺構検出状況



10区 遺物検出状況



10区 遺物検出状況



10区 柱穴群検出状況



10区 柱穴群検出状況



10区 SE38・39完掘状況



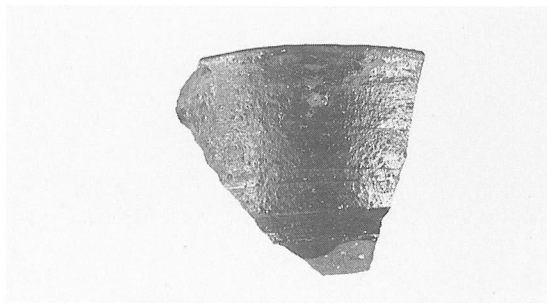
10区 SE38完掘状況



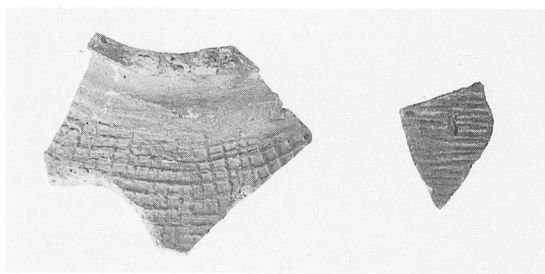
10区 SE38完掘状況



10区 SE38完掘状況



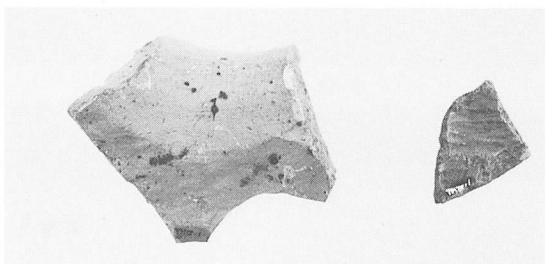
VIII区 1 (外面)



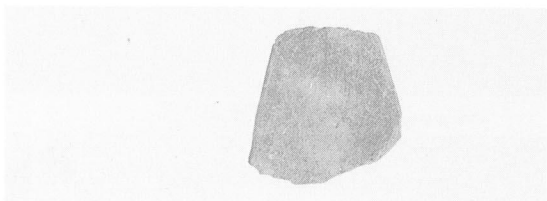
IX区 3·4 (外面)



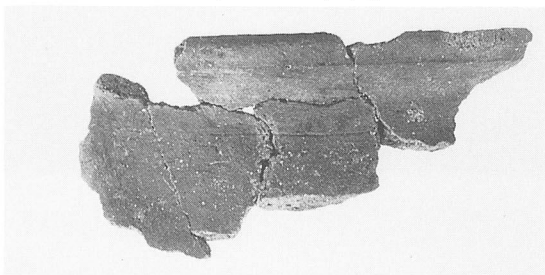
VIII区 1 (内面)



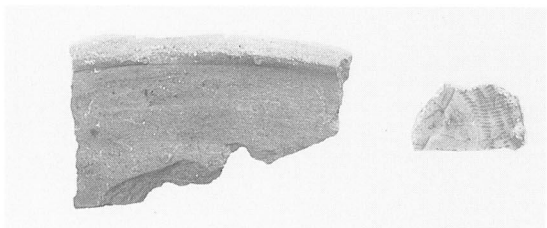
IX区 3·4 (内面)



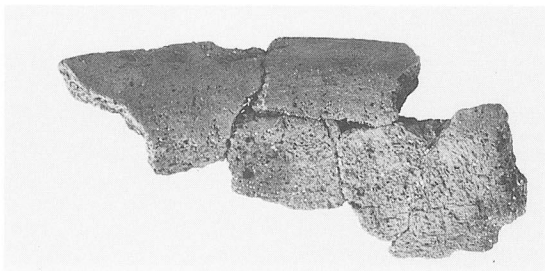
VIII区 2



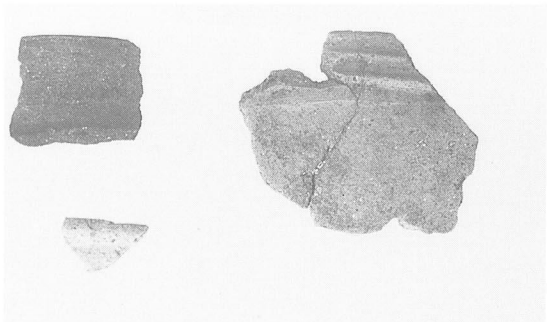
IX区 5 (外面)



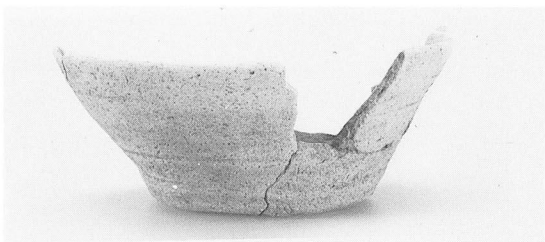
VII区 SE42



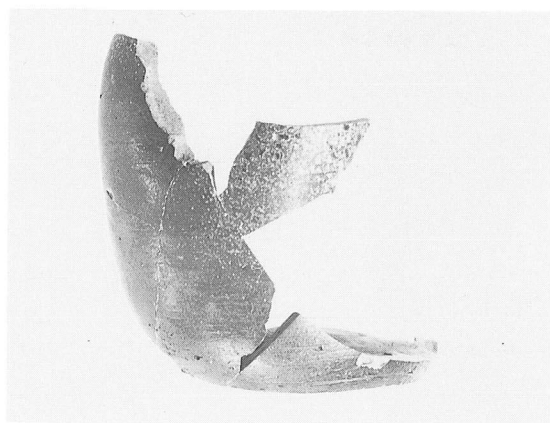
IX区 5 (内面)



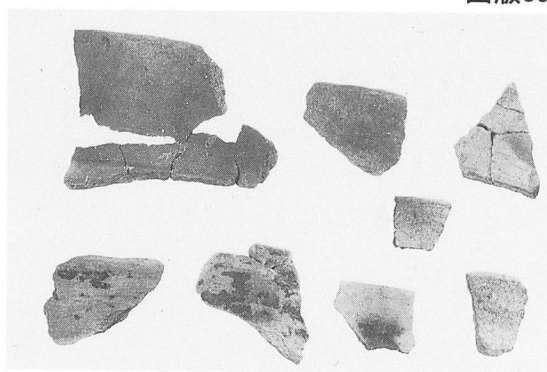
IX区 1·2·6



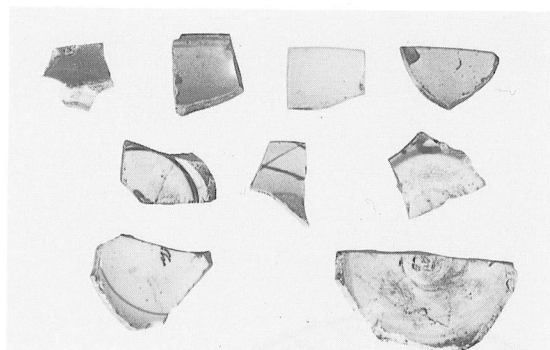
IX区 8



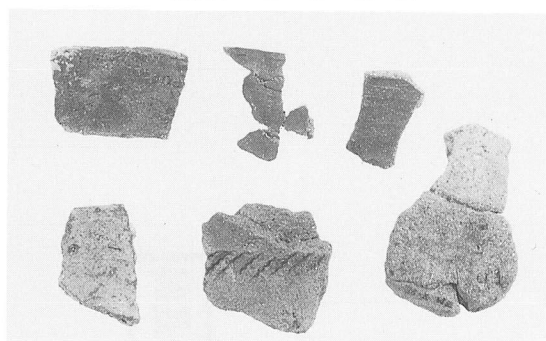
IX区9



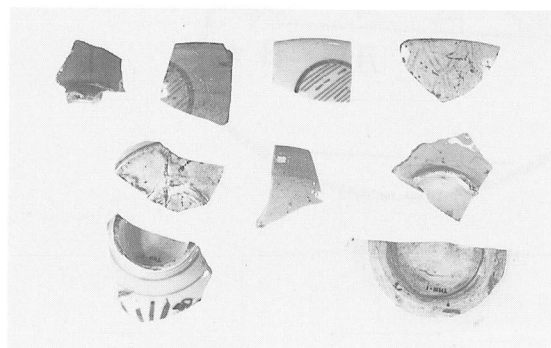
X区1~5·8·10·11



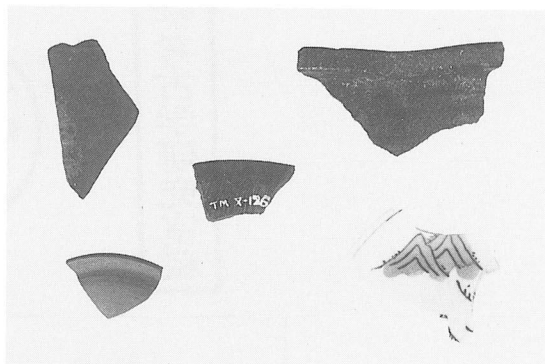
IX区10~18 (内面)



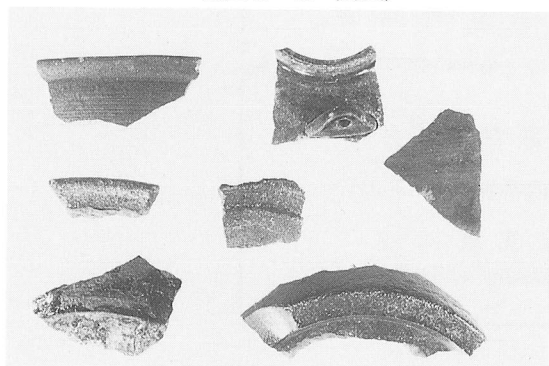
X区6·7·9·12~14



IX区10~18 (外面)



X区15~19



IX区7·19~24



## 樺山・郡元地区遺跡

年見川小規模河川改修事業に伴う  
埋蔵文化財調査報告書

平成4年3月

編集 宮崎県教育委員会  
発行

〒880 宮崎市橘通東1丁目9-10

印刷 株式会社都城印刷

〒885 宮崎県都城市早鈴町1618番地