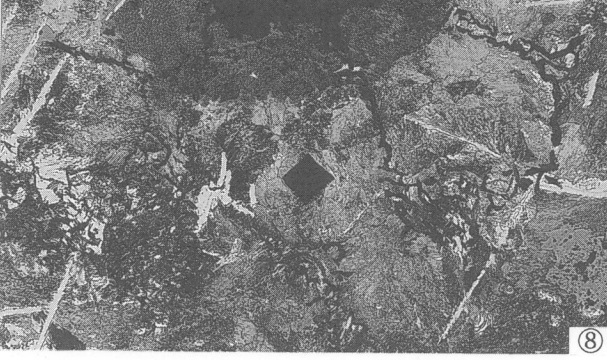
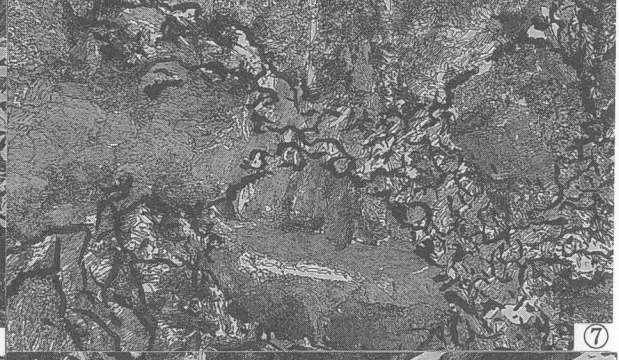
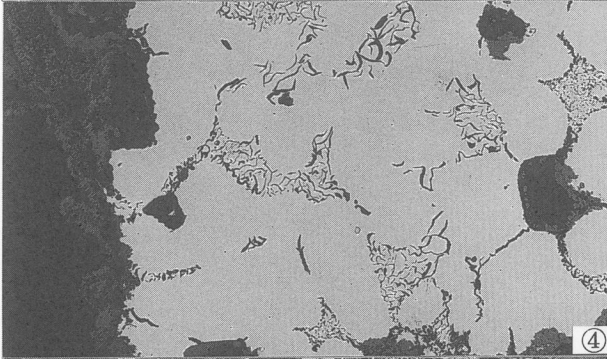
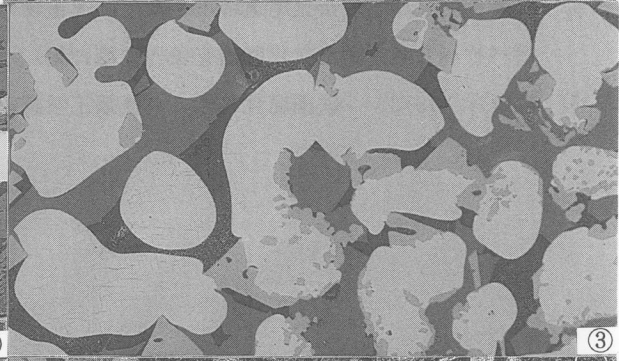
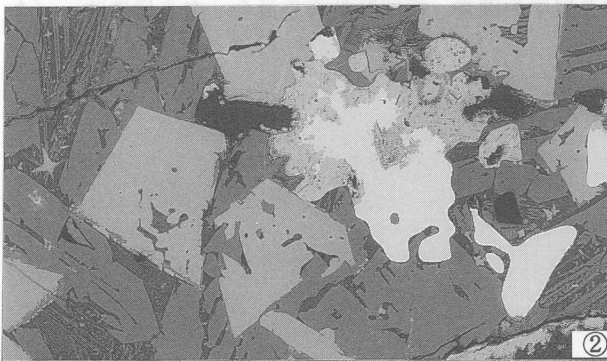
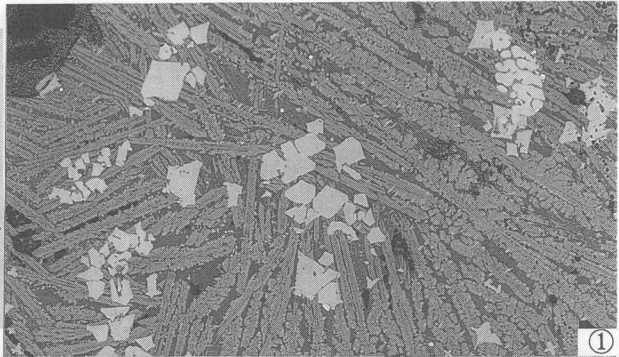
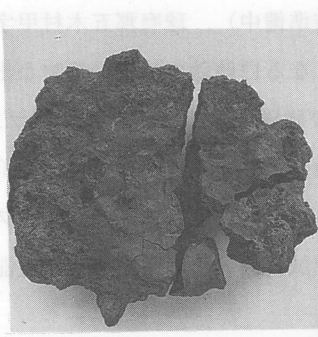


図版1 鉄滓の顕微鏡組織（含鉄腕形鍛冶滓：精錬鍛冶滓）

試料名：No.1603 KBD SI-26 E-6

- ①×100 底部組織
ファイライト+カルバシム
- ②×100 ③×400
カルバシム+ガスケット
- ④×100 ⑥⑦×400 ナイキ etch
- ⑧⑨×200 硬度圧力 200g
- ⑧[△]-ライト(白) 268Hv
- ⑨[△]-ライト(黒) 208Hv

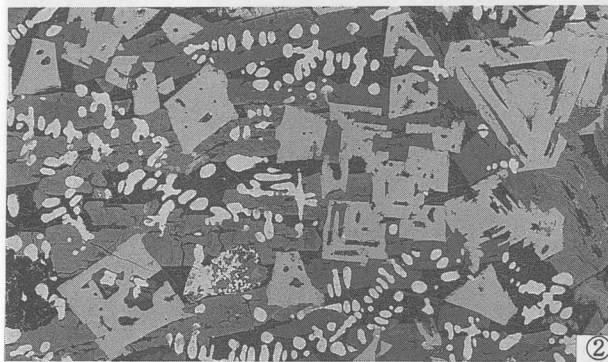
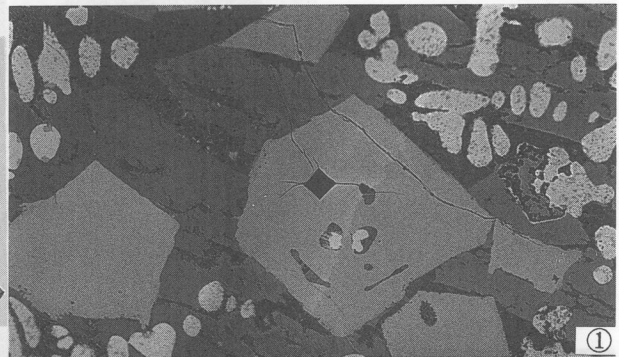
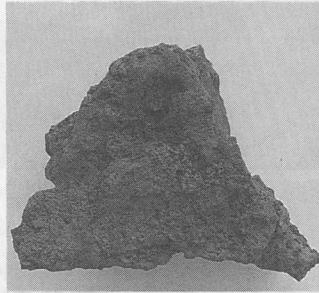


図版2 鉄滓の顕微鏡組織(1)

試料名: No.1592 KBD SI-26 C-5

精錬鍛冶滓

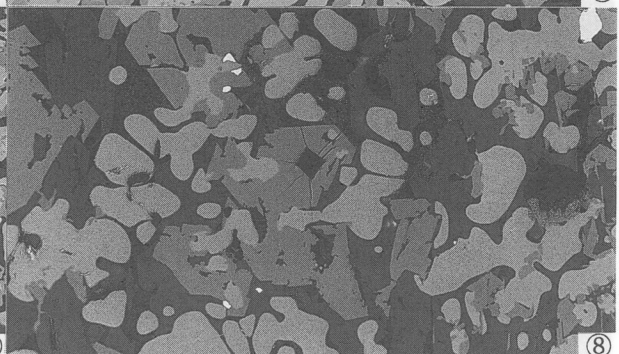
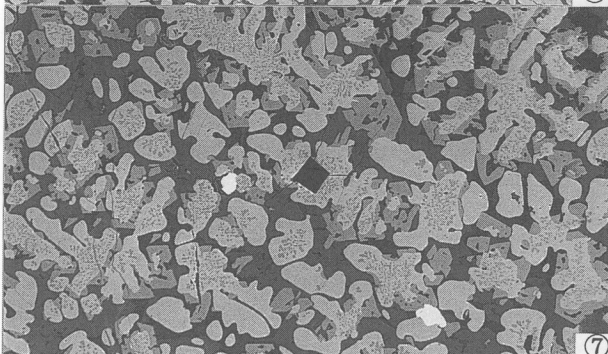
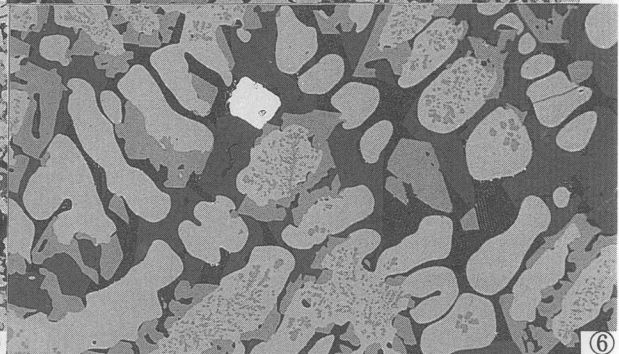
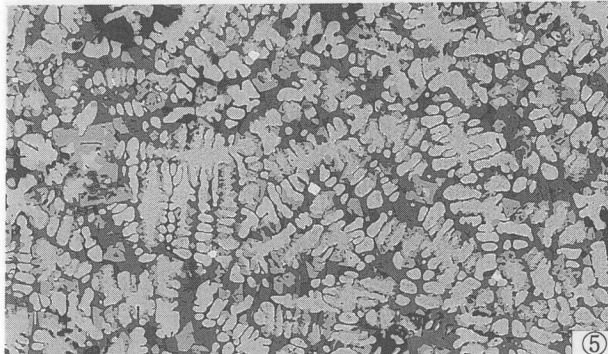
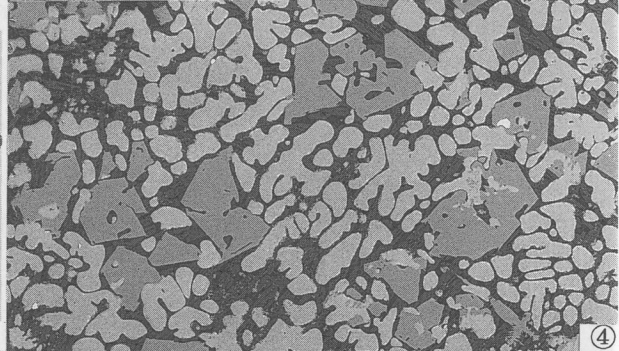
- ①×200 硬度圧痕
- ②カホースト: 693Hv
- ③×100 ④×400
- ⑤ウスタイト+カホースト
- ⑥ウスタイト粒内析出物



試料名: KBD SX-1 下7

精錬鍛冶滓

- ④⑤×100 ⑥×400
- ⑦ウスタイト+カホースト
- ⑧ウスタイト粒内析出物
- ⑨⑩×200 硬度圧痕
- ⑪マグネサイト: 526Hv
- ⑫カホースト: 664Hv

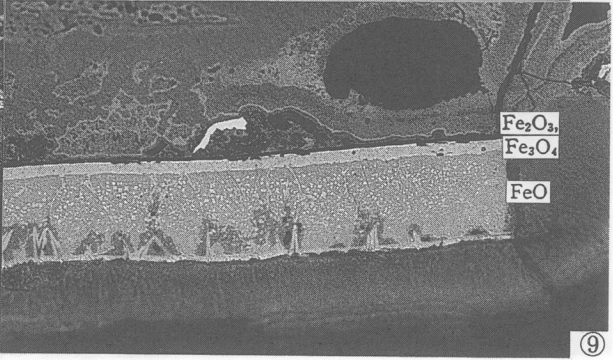
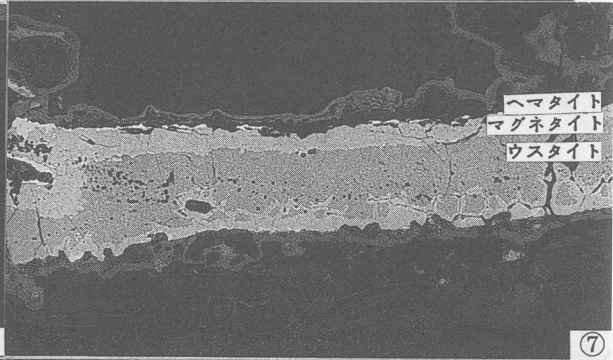
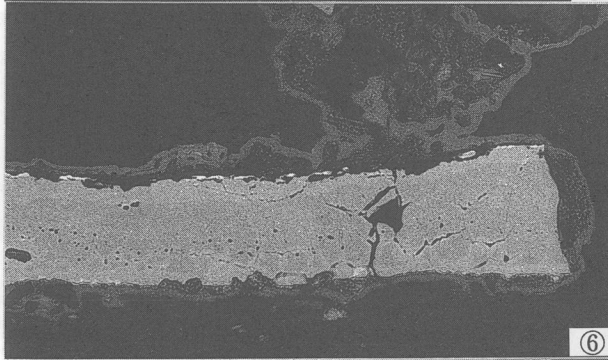
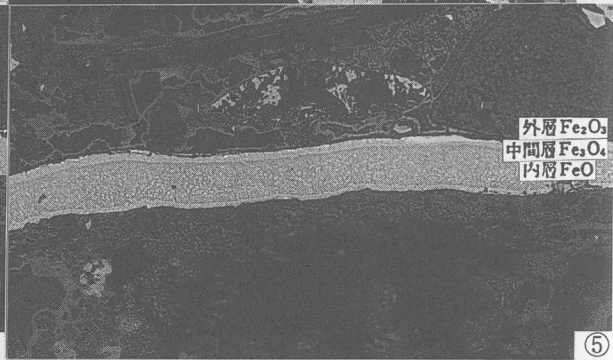
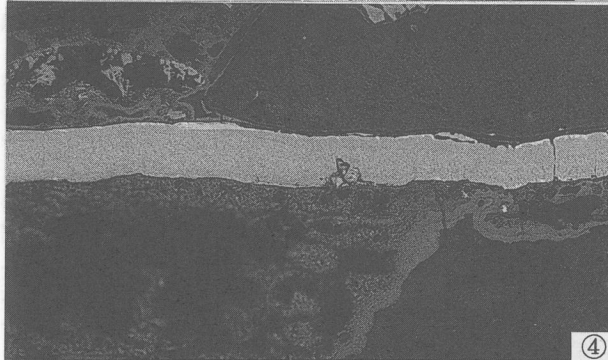
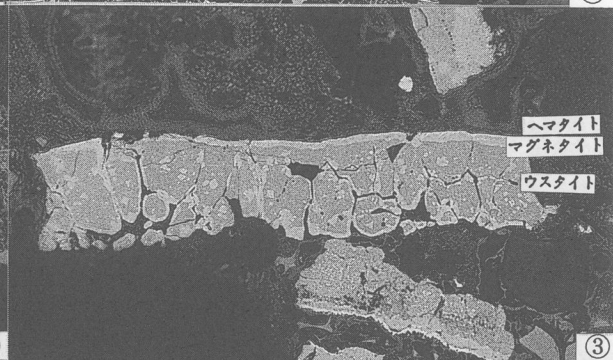
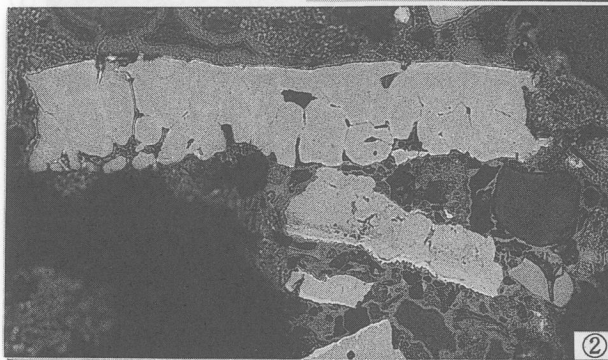


図版3 鍛造剥片付着椀形鍛冶滓の顕微鏡組織

試料名: No. 3493 KBD

SK-168Hトレ(1)

- ①×100 ②×400 no etch
- ③×400 王水 etch
- 内層が*スチット結晶質
- ④⑥×400 no etch
- ⑤⑦×400 王水 etch
- ⑧×100 ⑨×400 王水 etch
- 3層分離型剥片



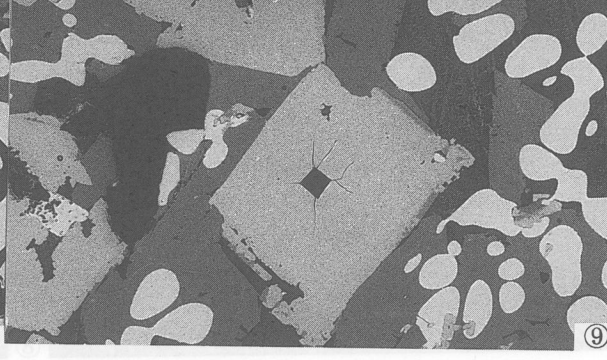
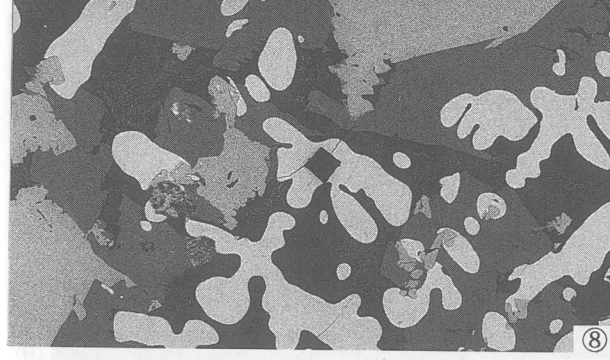
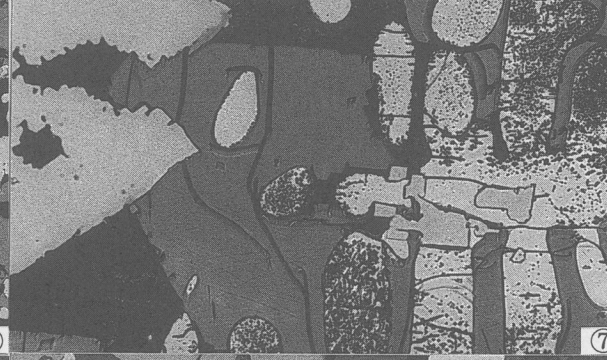
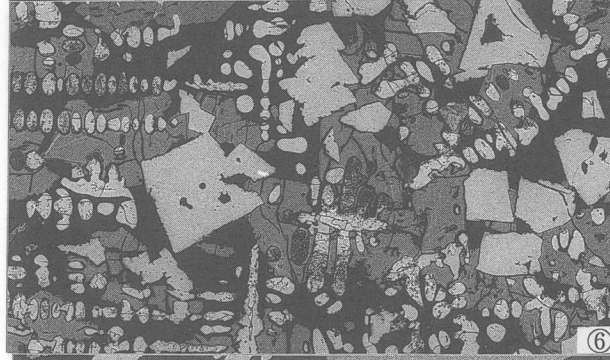
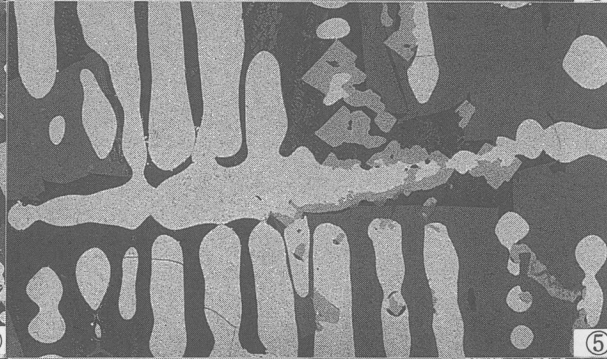
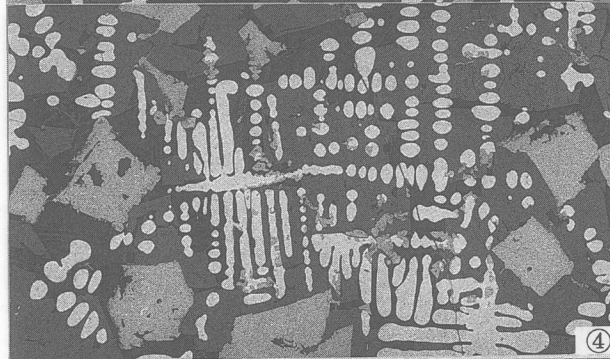
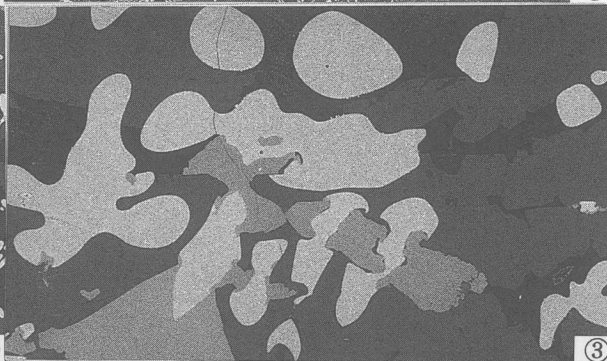
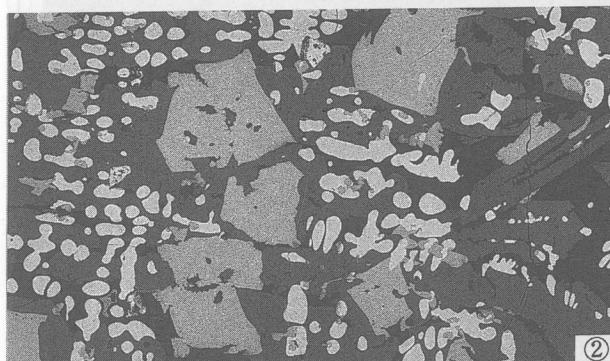
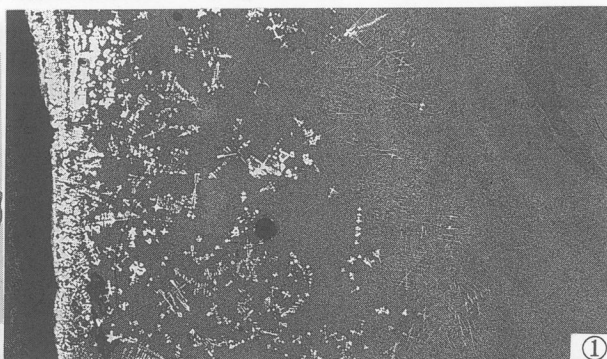
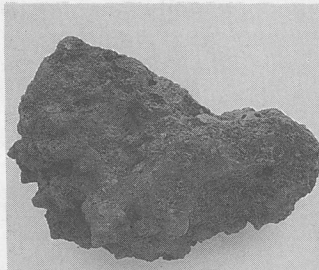
図版4 鉄滓の顕微鏡組織(2)

試料名: No.3493 KBD

SK-168Hトレ(2)

精錬鍛冶滓

- ①×100 表面カラス質
- ②④×100 ③⑤×400
- ウスタイト+ウルクスト
- (ウスタイト粒内 Fe-Ti 析出物)
- ⑥×100 ⑦×400 王水 etch
- ⑧⑨×200 硬度圧力痕
- ⑧ウルクスト: 533Hv
- ⑨ウルクスト: 682Hv



図版5 砂鉄製鍊滓（含鉄炉底塊）の顕微鏡組織

試料名：No.3485 KBD

SK-168Bトレ

①×50 ②×100 ③×400

メタ晶出後砂鉄残骸

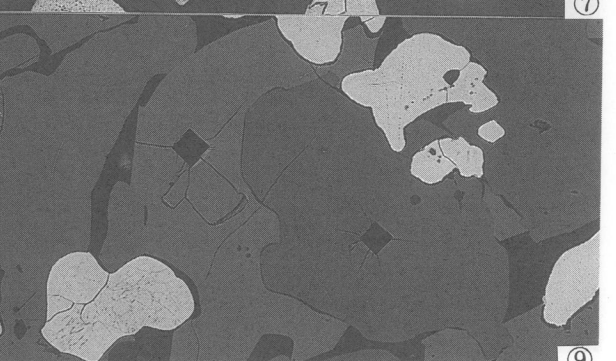
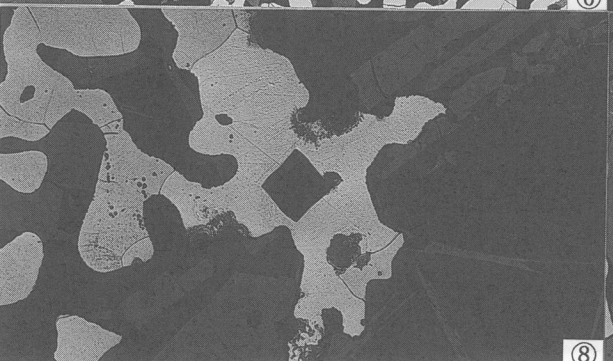
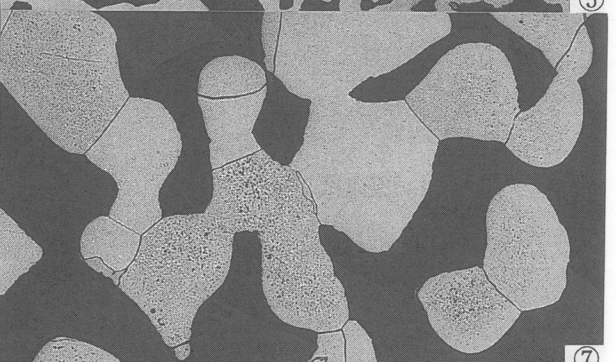
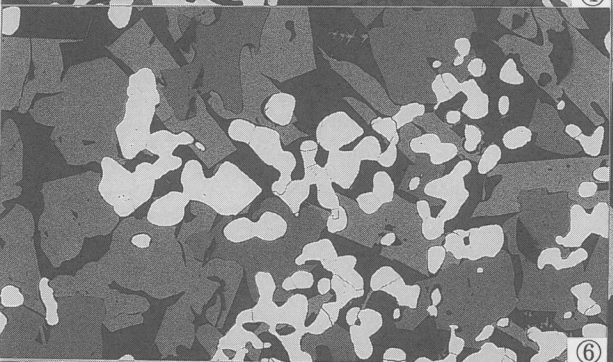
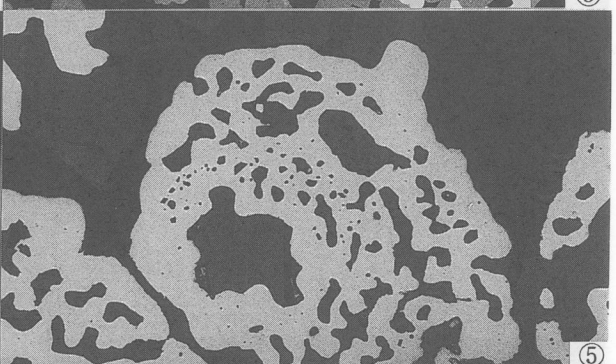
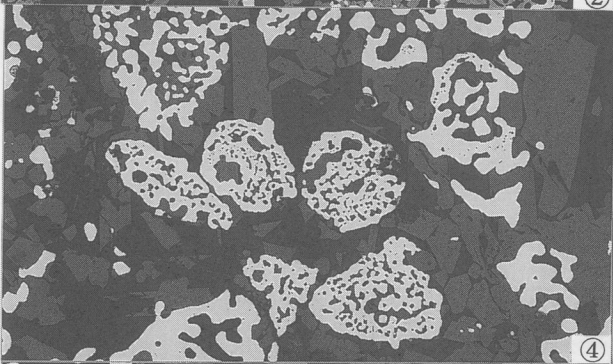
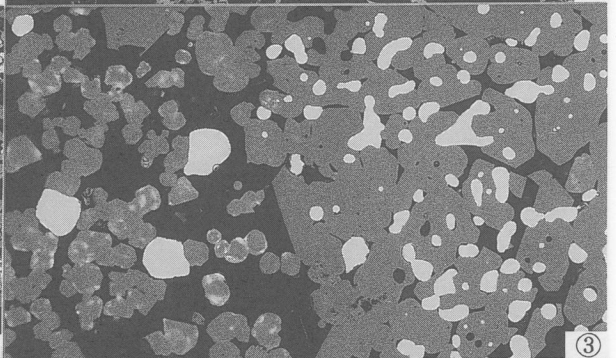
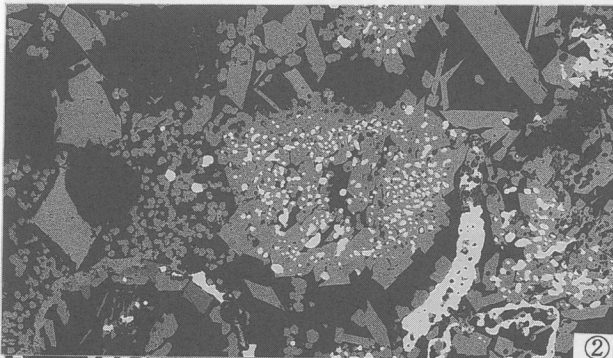
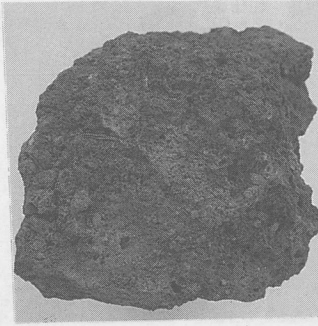
④×100 ⑤×400

海綿状鉄(Ferrite)

⑧⑨×200 硬度圧痕

⑧：148Hv

⑨濃：683Hv 淡：526Hv



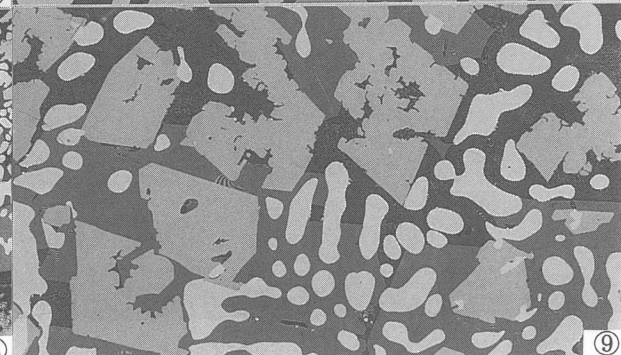
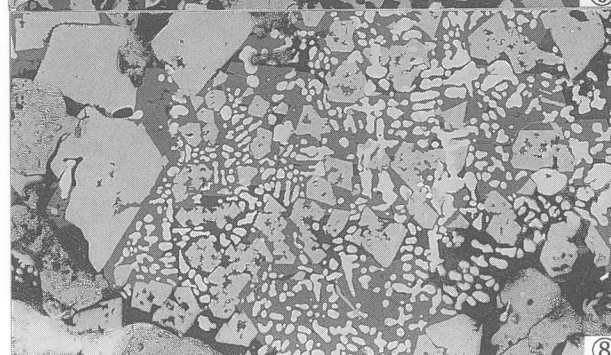
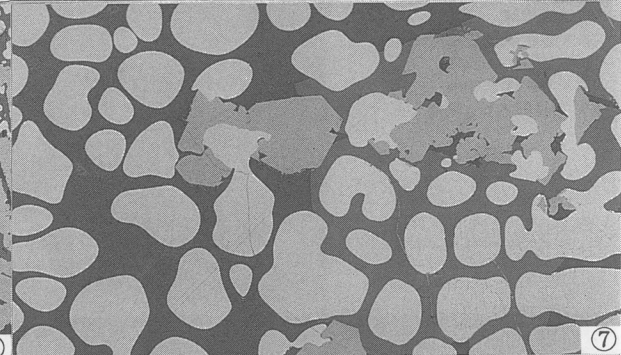
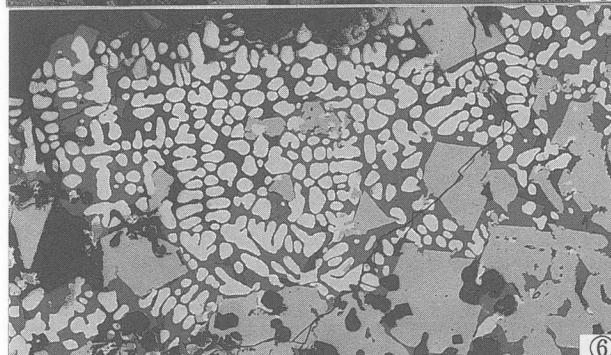
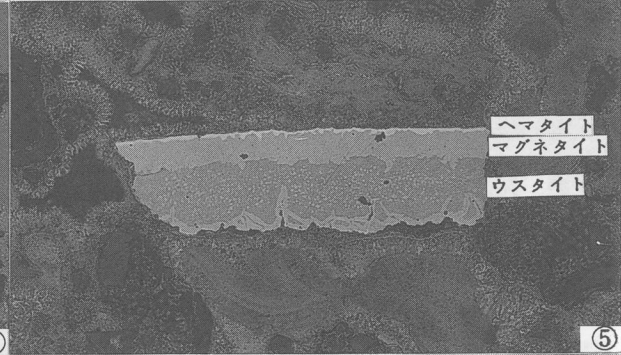
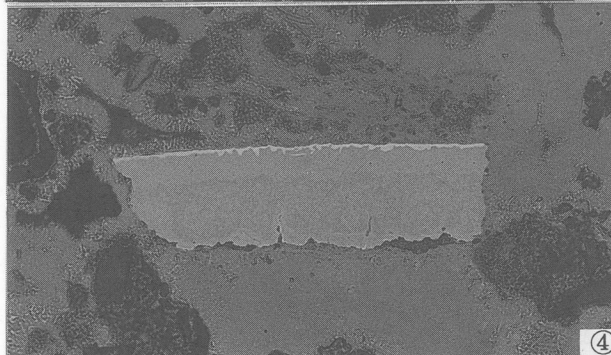
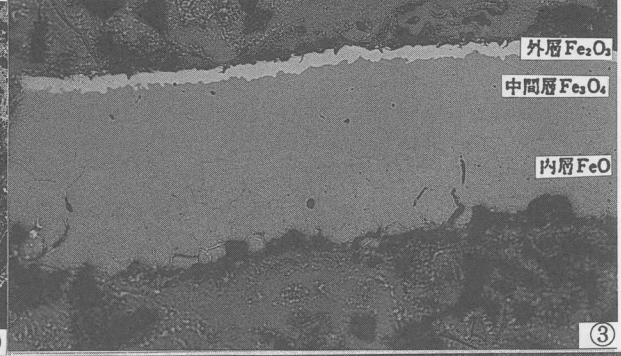
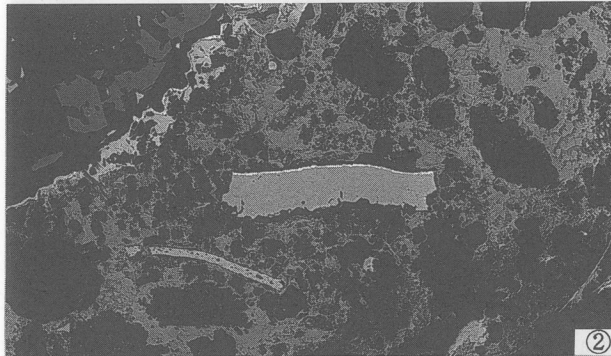
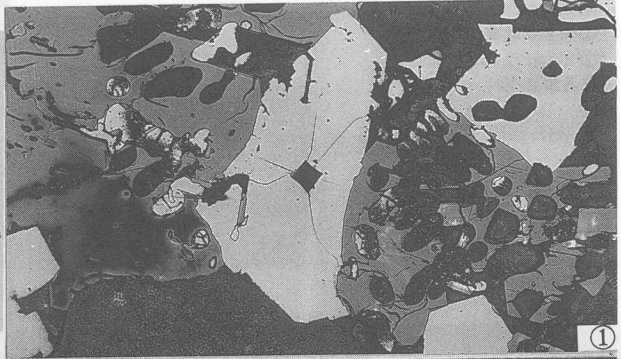
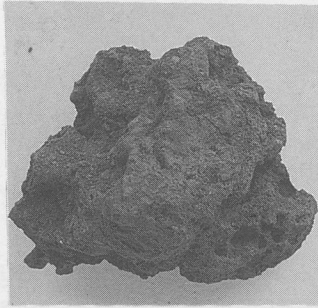
図版6 鉄滓の顕微鏡組織 (3)

試料名: No.3490 KBD

SK-168Eトレ

精錬鍛冶滓

- ①× 200 硬度圧痕
ウイリスチル: 655Hv
- ②× 100 ③× 400
no etch: 鍛造滓剥片
- ④× 100 ⑤× 400
- ⑥のみ王水 etch
- ⑥⑧× 100 ⑦⑨× 400
ウスタイト+ウイリスチル



図版7 鉄滓の顕微鏡組織(4)

試料名: KBD SX-1 C8

精錬鍛冶滓

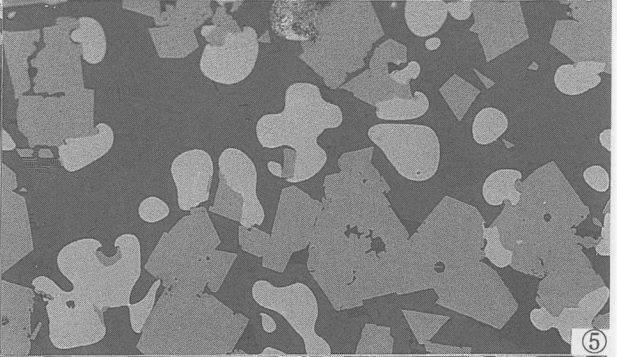
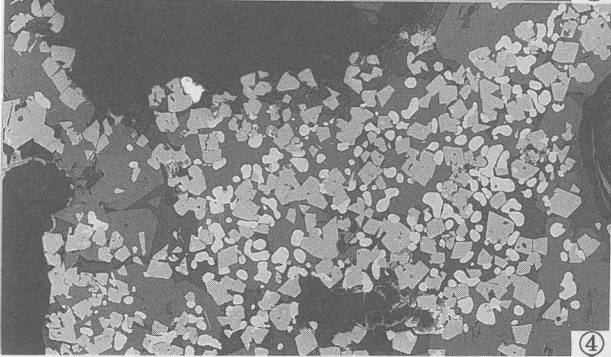
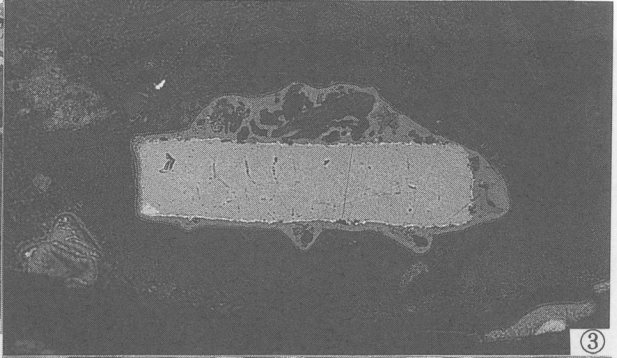
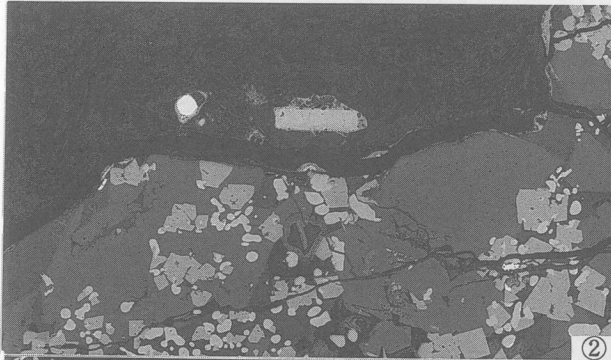
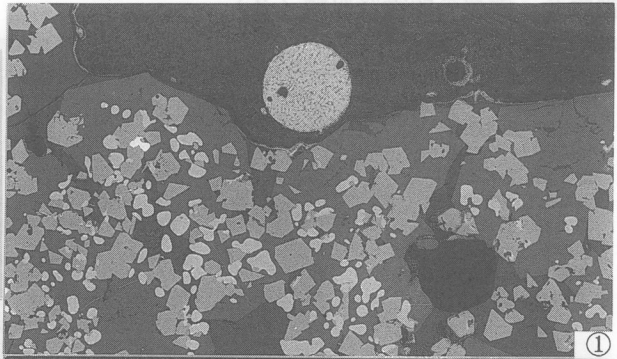
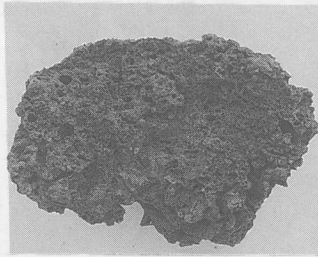
①×100 粒状滓とスラグ

②×100 ③×400

附着鍛造剣片とスラグ

④×100 ⑤×400

ウスタイト+ウホホスビニ



試料名: KBD SI-1 No.163

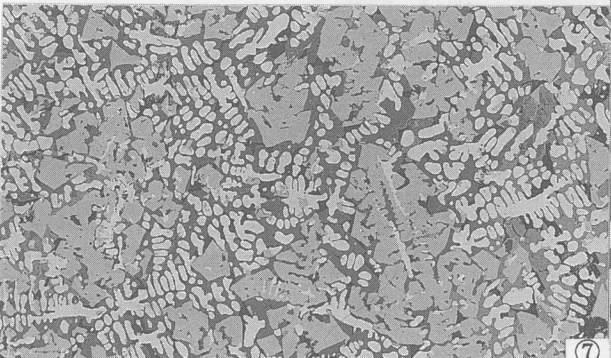
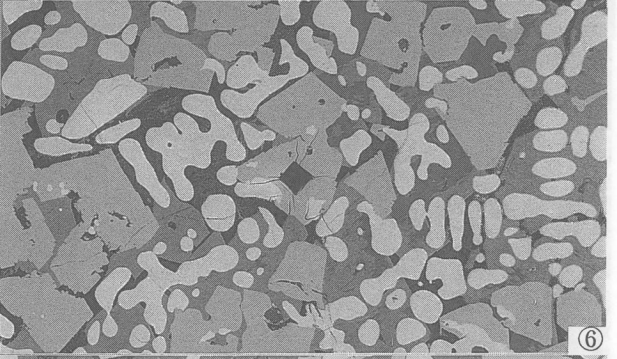
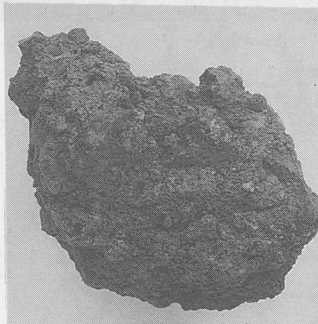
精錬鍛冶滓

⑥×200 硬度圧痕

ウホホスビニ: 674Hv

⑦×100 ⑧×400

(ウスタイト粒内析出物)



図版8 鉄滓の顕微鏡組織(5)

試料名: KBD SI-59 No.12

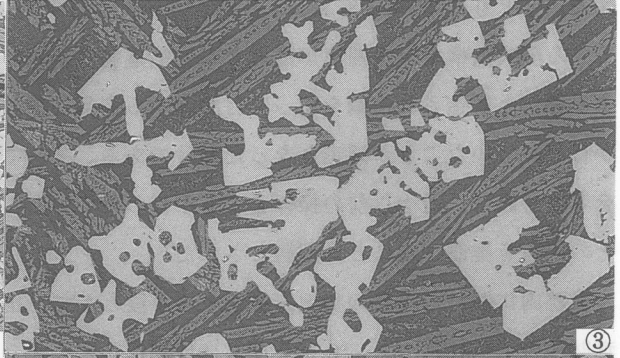
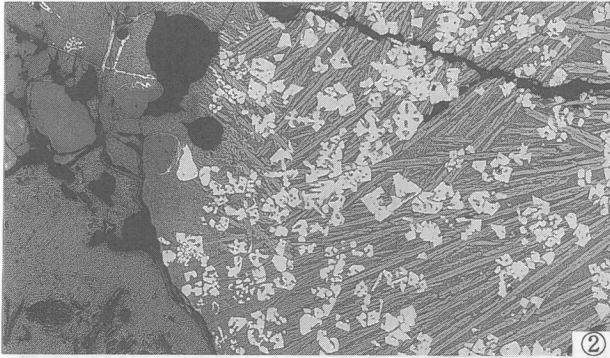
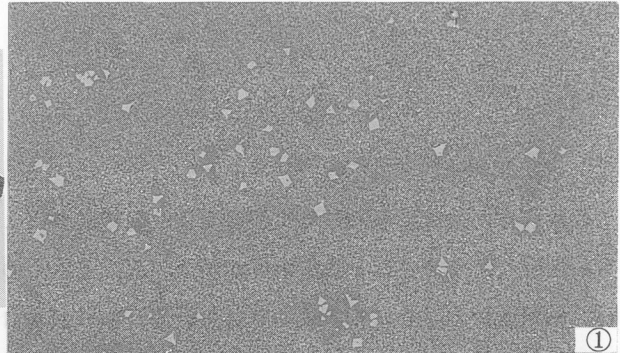
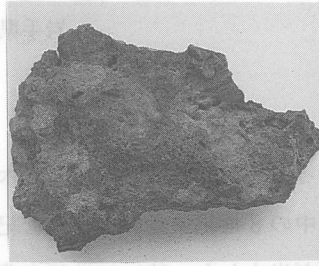
炉壁溶融物

①×400

ガラス質スラグのマグネサイト

②×100 ③×400

マグネサイト+7-イライト



試料名: KBD SI-59 No.34

精錬鍛冶滓

④×200 硬度圧痕

カルクスビネル: 702Hv

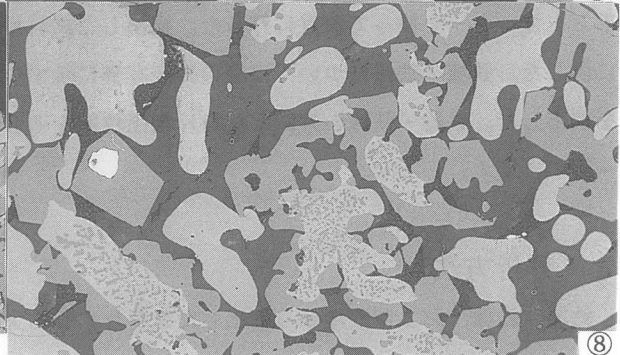
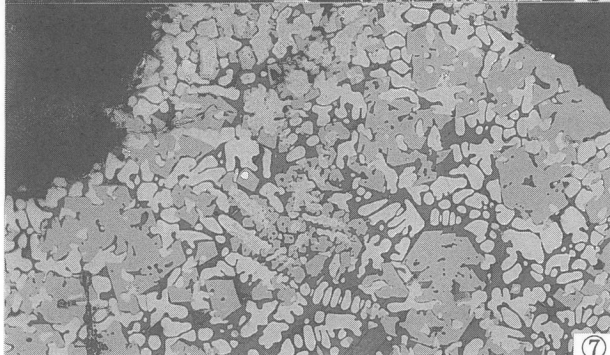
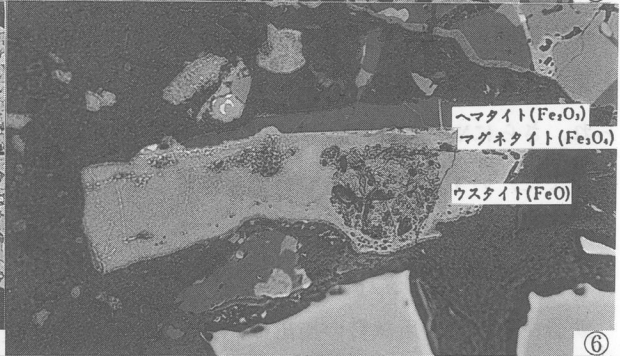
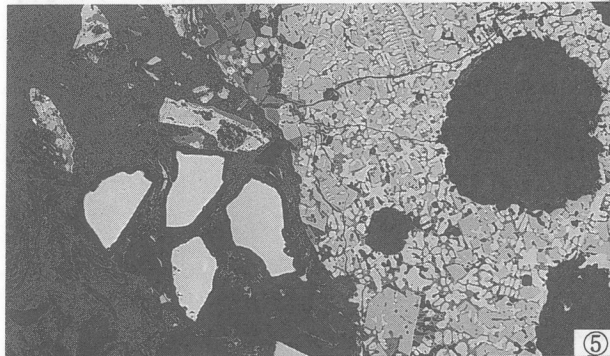
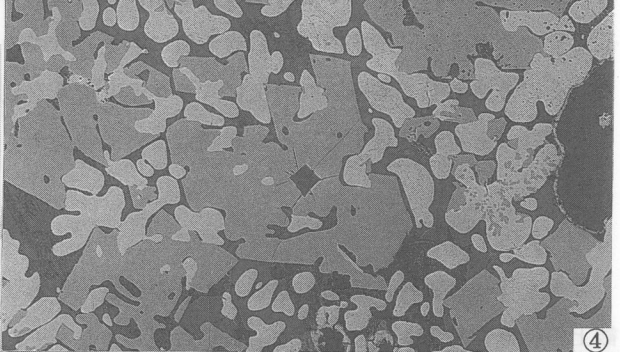
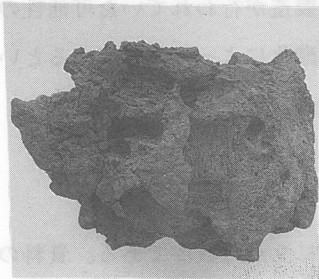
⑤×100 ⑥×400

自然砂鉄と鍛造刺片付着

⑦×100 ⑧×400

ウスタイト(粒内析出物)

+カルクスビネル



掲載不可

掲載不可

掲載不可

掲載不可

掲載不可

掲載不可

掲載不可

掲載不可

掲載不可

掲載不可

掲載不可

掲載不可

掲載不可

掲載不可

掲載不可

写真図版

木工台遺跡 1



木工台遺跡遠景



北西部完掘状況

PL 2



北西部遺構確認状況



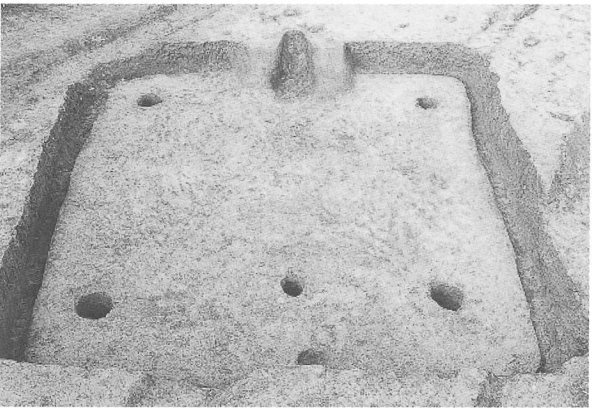
第1号掘立柱建物跡遺構確認状況



東部完掘状況



中央部完掘状況



第1号住居跡



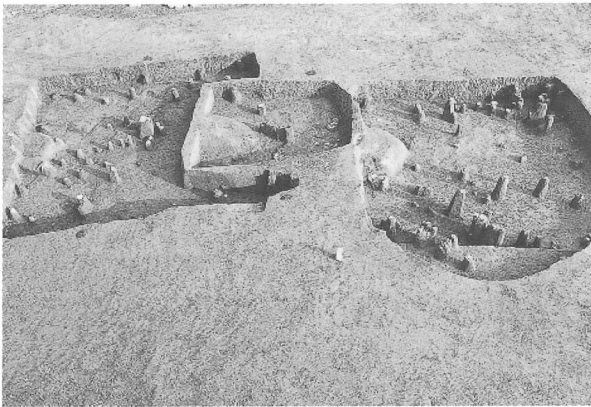
第1号住居跡遺物出土状況



第2号住居跡



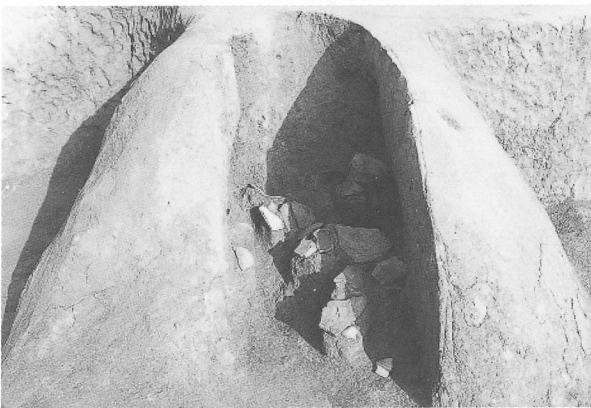
第3号住居跡



第3・8・9号住居跡遺物出土状況



第4・5号住居跡



第5号住居跡竈遺物出土状況



第6・14号住居跡



第6号住居跡竈遺物出土状況



第7号住居跡



第7号住居跡竈遺物出土状況



第8号住居跡



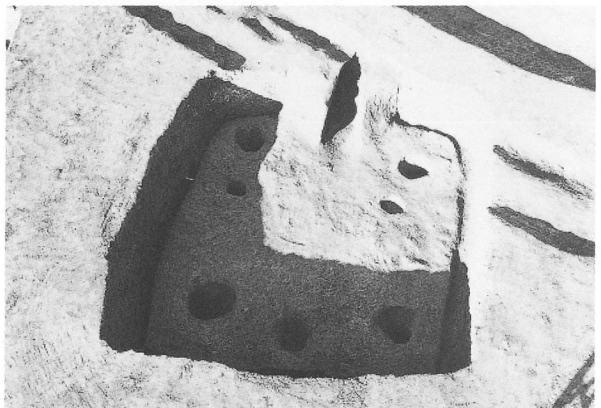
第9号住居跡



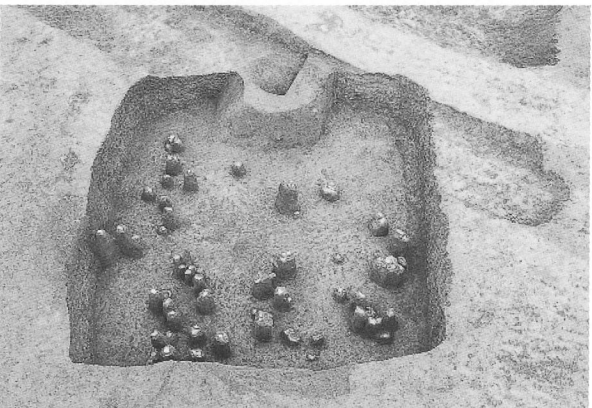
第11・106号住居跡



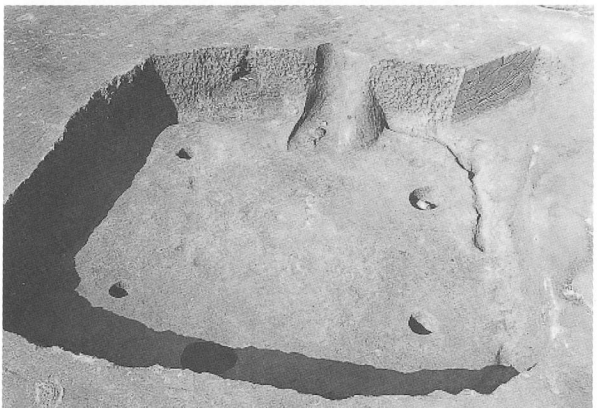
第12号住居跡



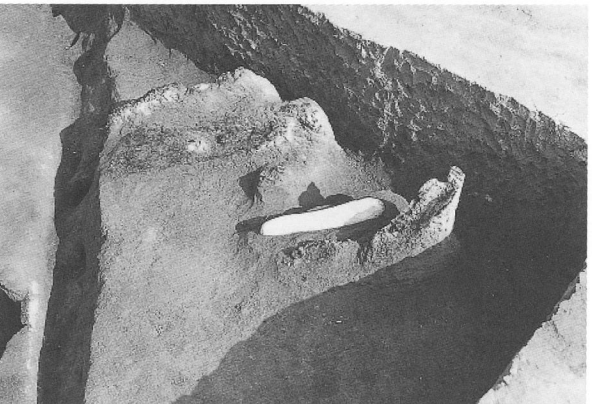
第13号住居跡



第13号住居跡遺物出土状況



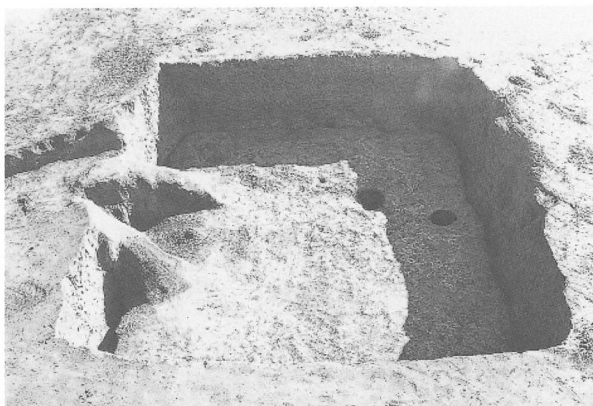
第14号住居跡



第14号住居跡竈遺物出土状況



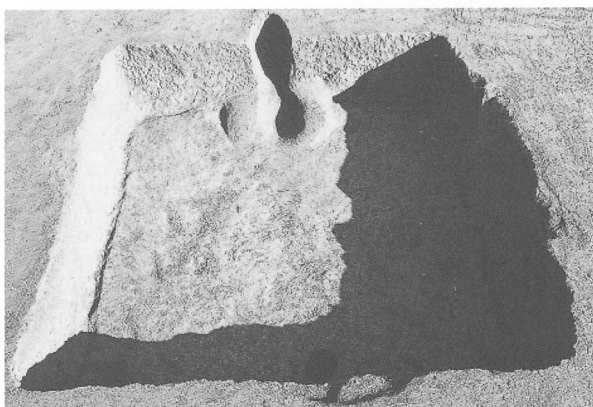
第15・20・107号住居跡



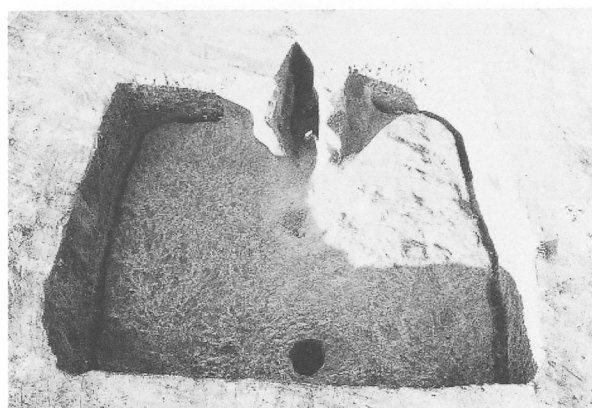
第16号住居跡



第16号住居跡遺物出土状況



第17号住居跡



第18号住居跡



第19号住居跡



第20号住居跡



第21号住居跡



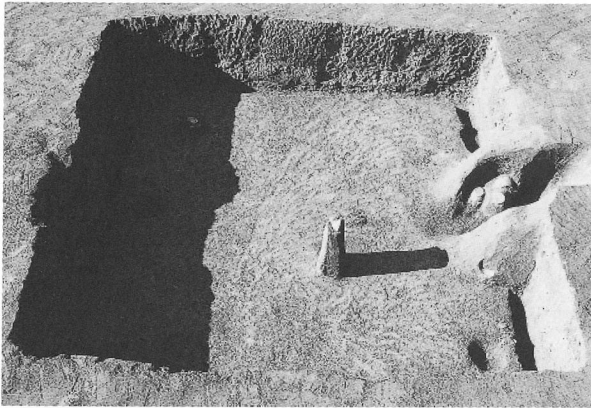
第21号住居跡遺物出土状況



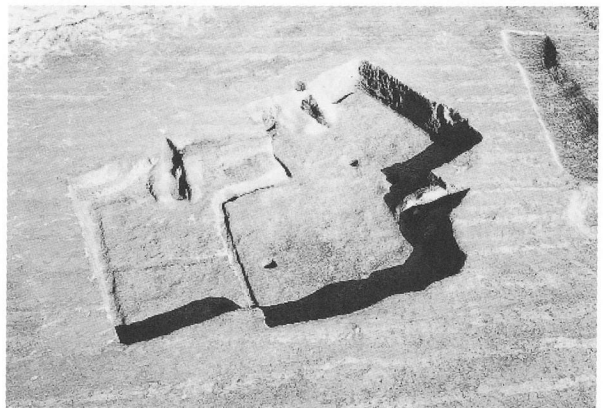
第22号住居跡



第23号住居跡



第24号住居跡遺物出土状況



第25・27・28号住居跡



第27号住居跡竈遺物出土状況



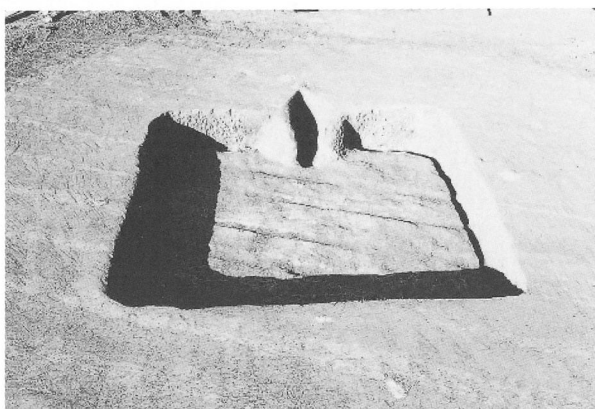
第28号住居跡竈遺物出土状況



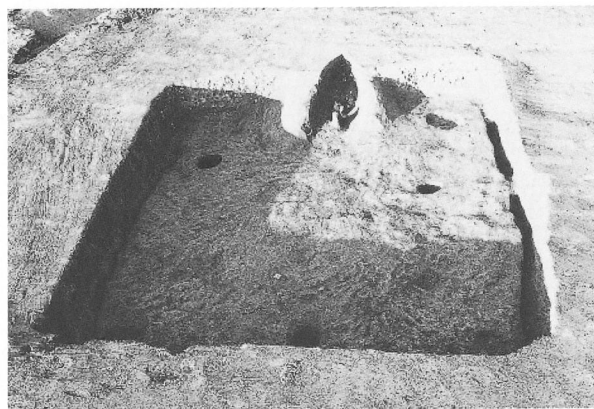
第26号住居跡・第163・164号土坑



第29号住居跡遺物出土状況



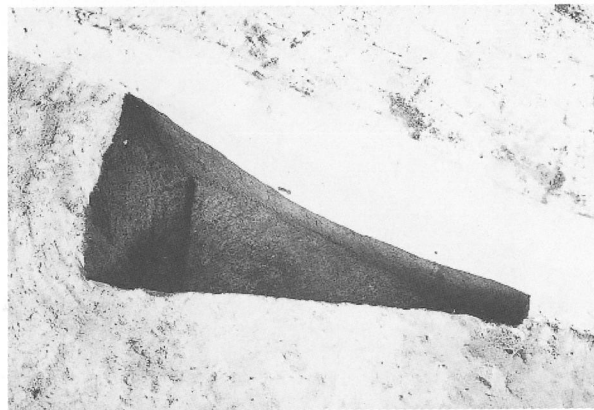
第30号住居跡



第31号住居跡



第32・48号住居跡



第33号住居跡



第34号住居跡



第34号住居跡竈遺物出土状況



第35号住居跡



第36号住居跡



第37号住居跡



第38号住居跡



第39号住居跡



第40号住居跡



第41号住居跡



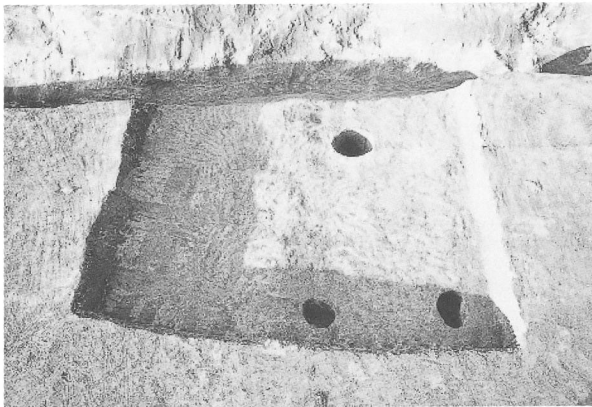
第41号住居跡遺物出土状況



第42号住居跡



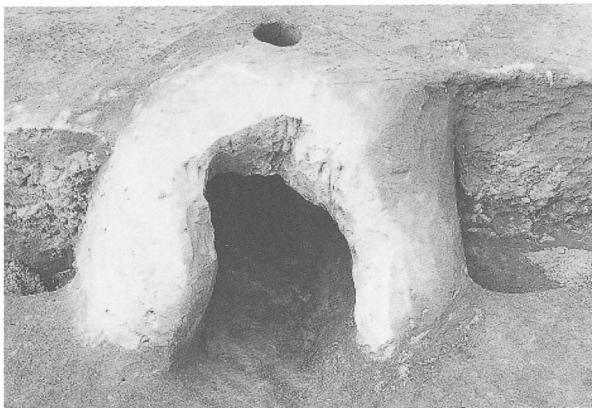
第42号住居跡竈遺物出土状況



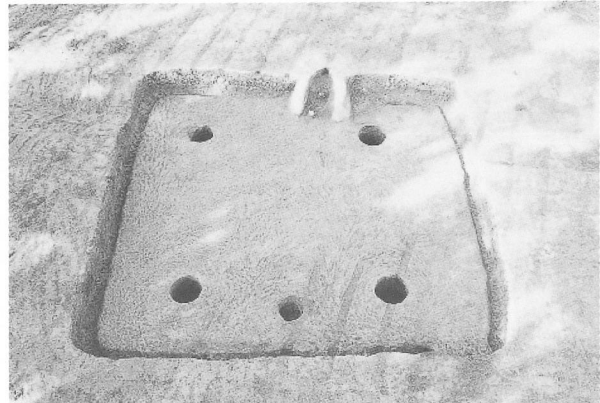
第43号住居跡



第45号住居跡



第45号住居跡竈



第46号住居跡



第46号住居跡遺物出土状況



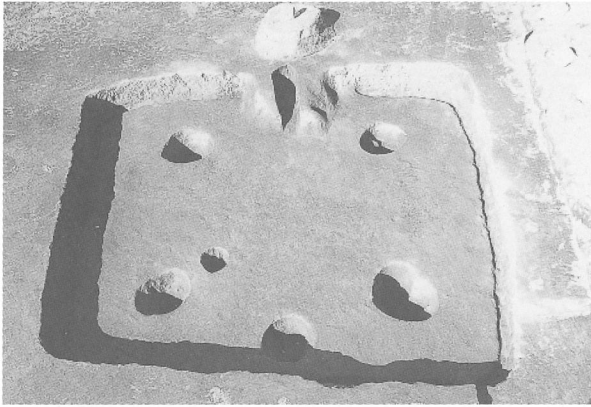
第47号住居跡



第47号住居跡遺物出土状況



第48号住居跡



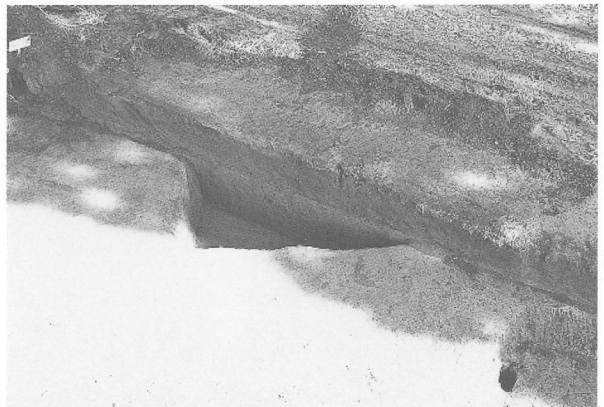
第49号住居跡



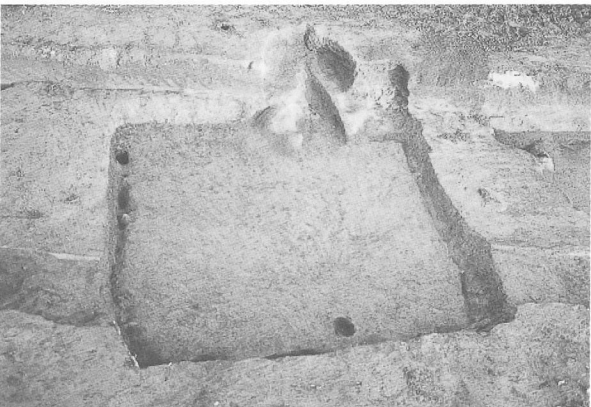
第49号住居跡遺物出土状況



第50号住居跡



第51号住居跡



第52号住居跡



第53号住居跡



第54号住居跡・第102号土坑



第54・55号住居跡



第56・85号住居跡



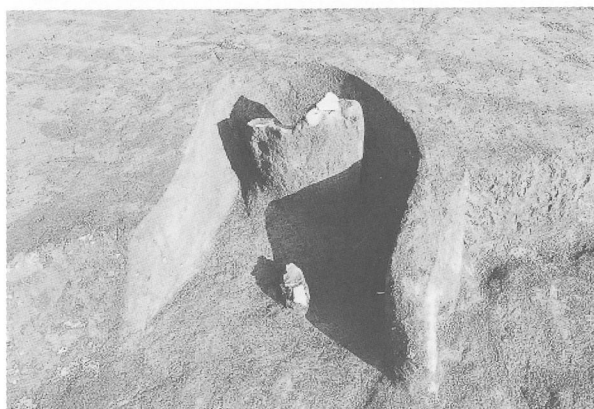
第56号住居跡竈遺物出土状況



第57号住居跡



第58・59・60号住居跡



第58号住居跡竈遺物出土状況



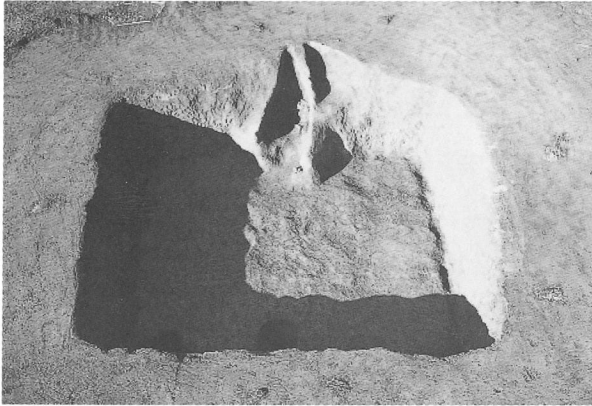
第59号住居跡竈B遺物出土状況



第61号住居跡



第62号住居跡



第63号住居跡



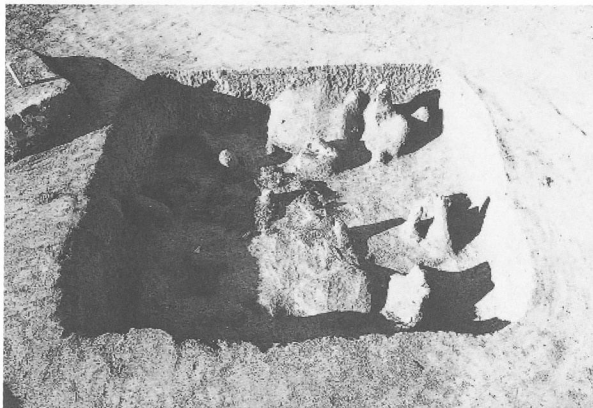
第64号住居跡遺物出土状況



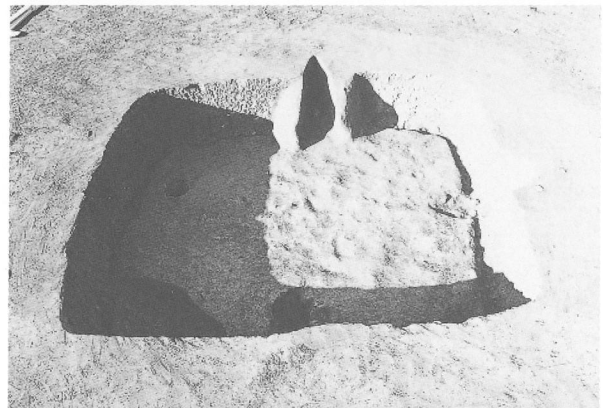
第65号住居跡



第66号住居跡



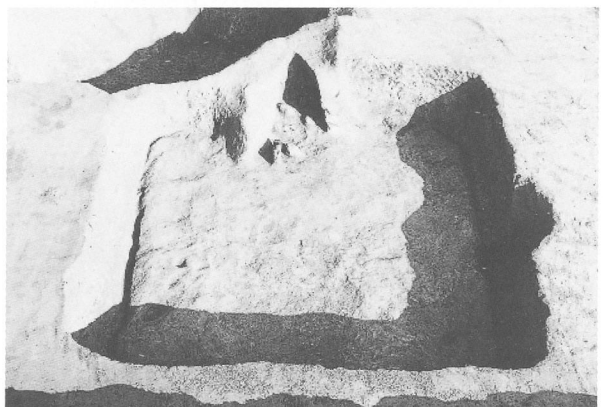
第66号住居跡遺物出土状況



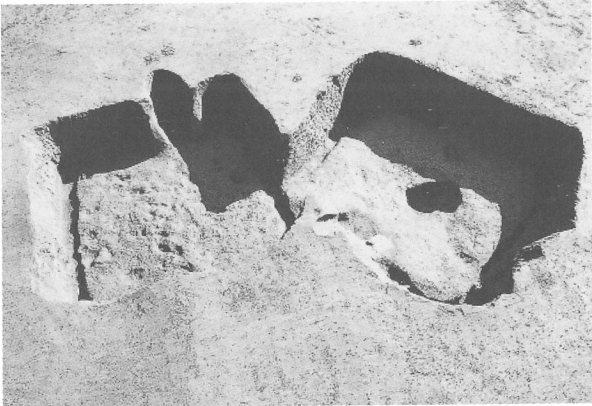
第67号住居跡



第67号住居跡竈土層断面



第68号住居跡



第69・70号住居跡



第69号住居跡竈遺物出土状況



第70号住居跡竈遺物出土状況



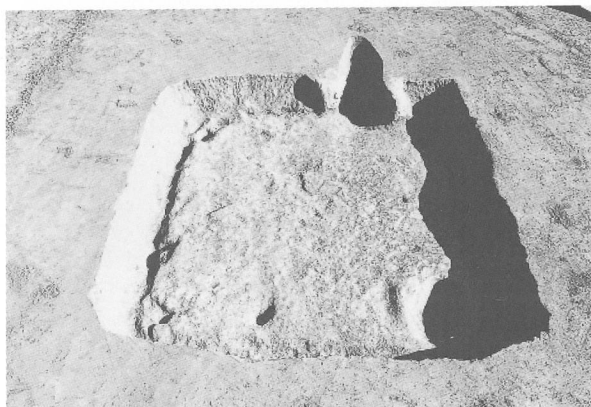
第71号住居跡



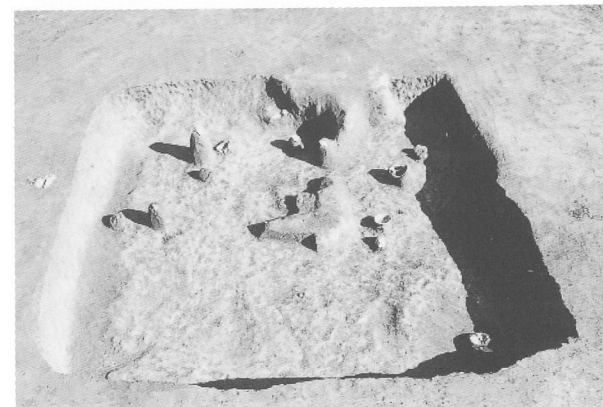
第71号住居跡遺物出土状況



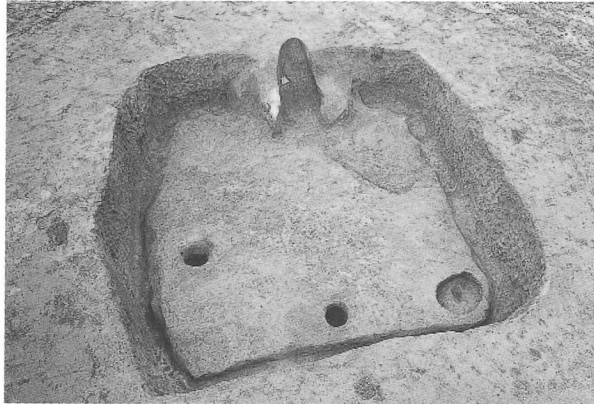
第71号住居跡竈遺物出土状況



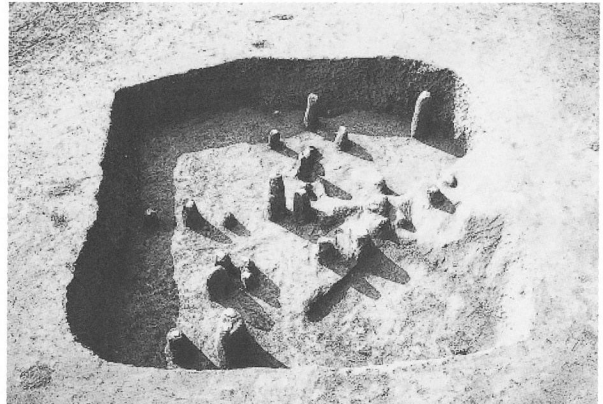
第72号住居跡



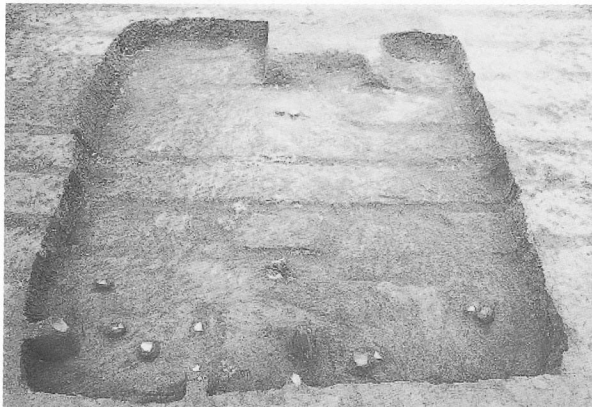
第72号住居跡遺物出土状況



第73号住居跡



第73号住居跡遺物出土状況



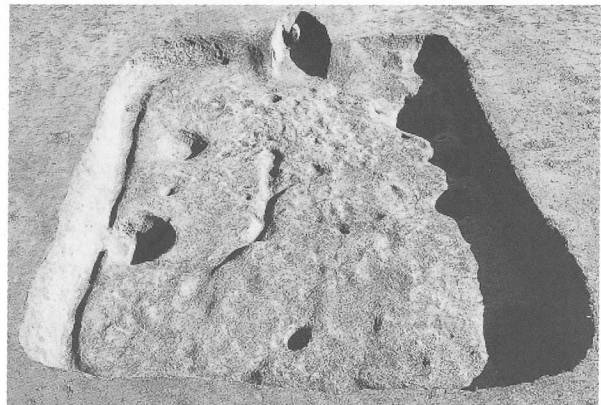
第74号住居跡遺物出土状況



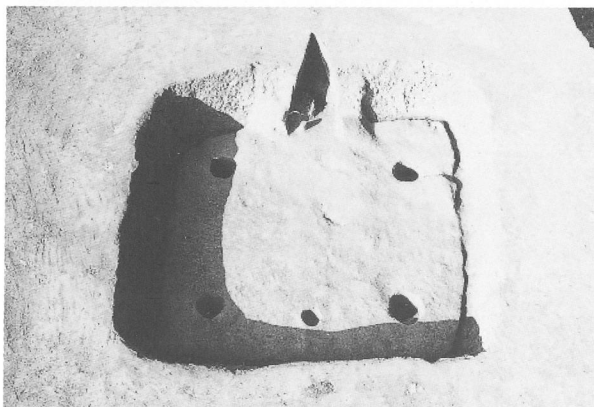
第74号住居跡竈遺物出土状況



第75号住居跡



第76号住居跡



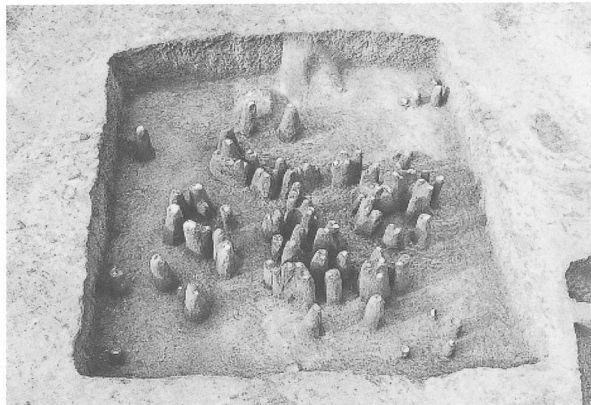
第77号住居跡



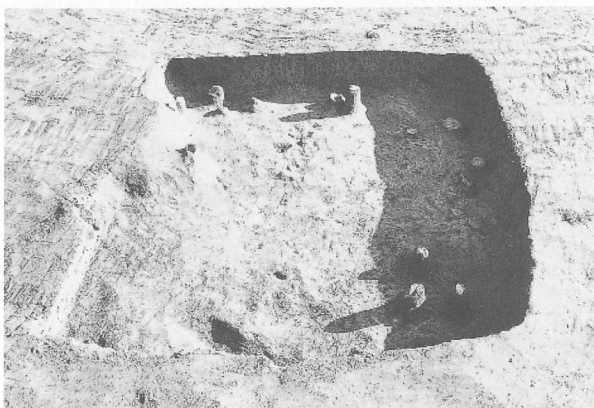
第77号住居跡竈



第78号住居跡



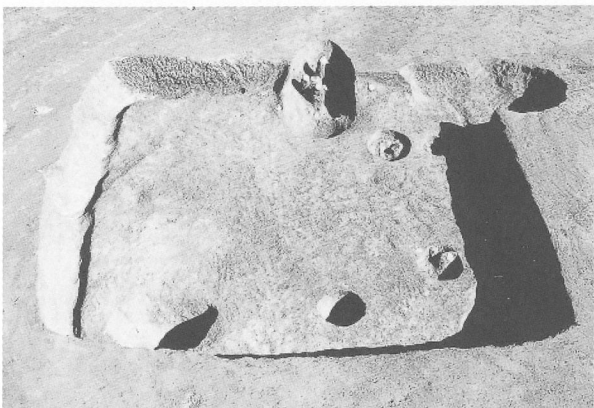
第78号住居跡遺物出土状況



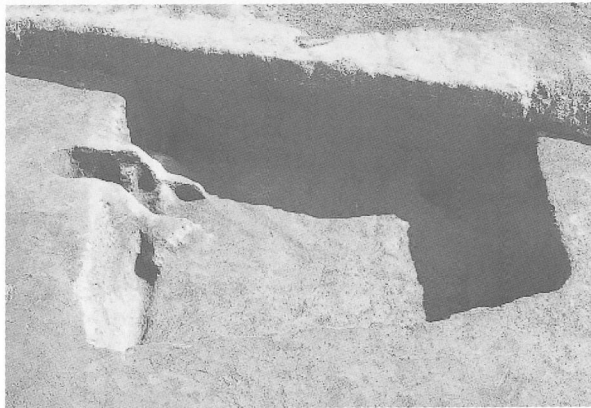
第79号住居跡遺物出土状況



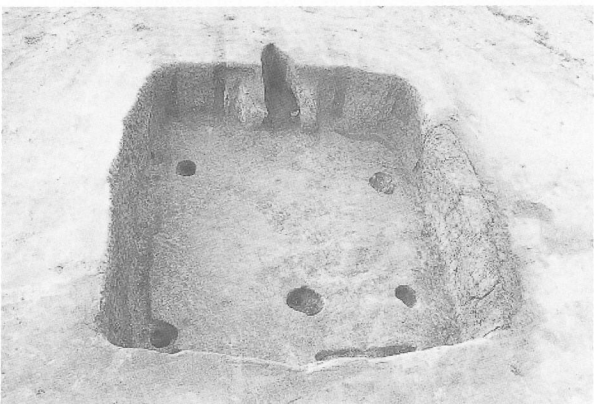
第79号住居跡竈遺物出土状況



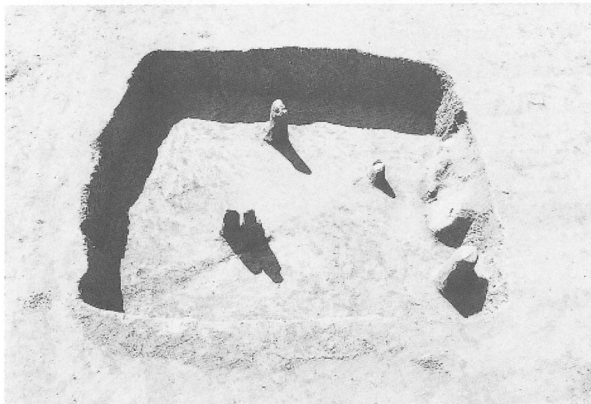
第80号住居跡



第81号住居跡



第82号住居跡



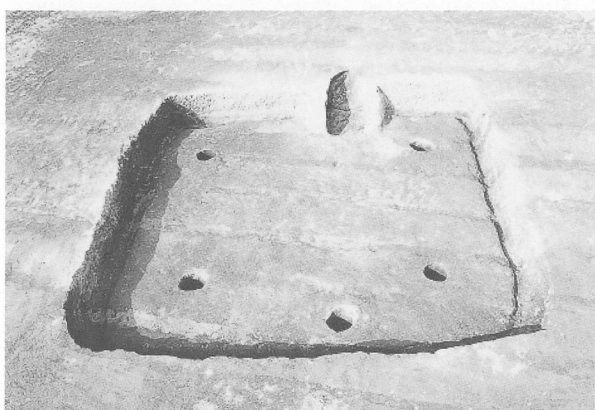
第82号住居跡遺物出土状況



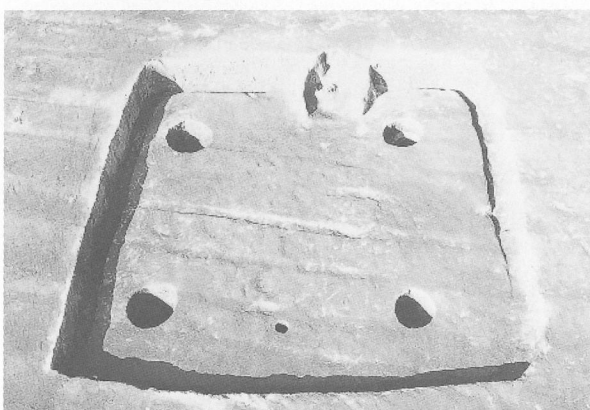
第83号住居跡



第83・84号住居跡



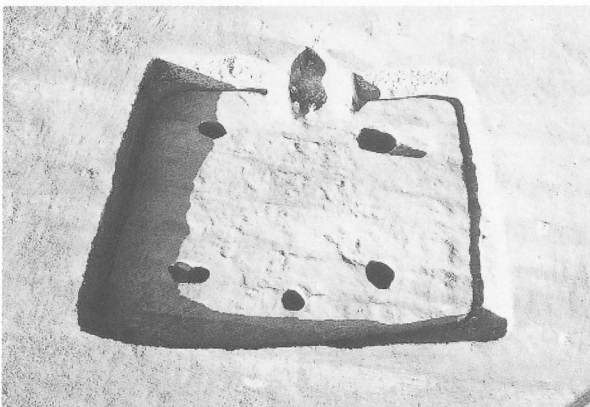
第86号住居跡



第87号住居跡



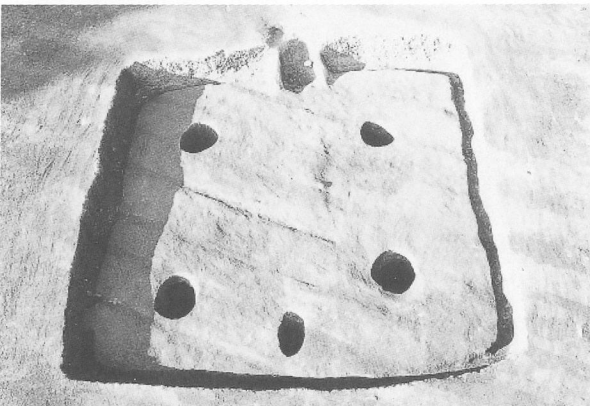
第87号住居跡遺物出土状況



第88号住居跡



第88号住居跡遺物出土状況



第89号住居跡



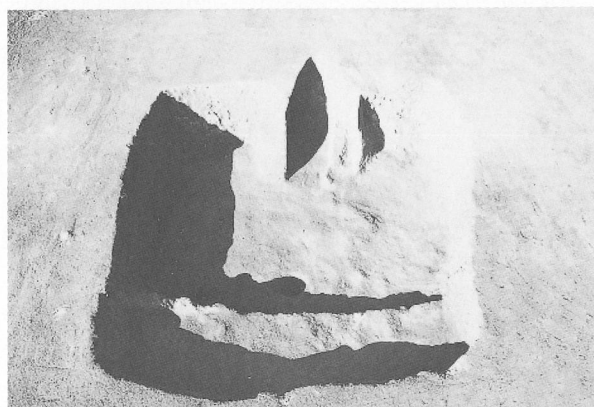
第90号住居跡遺物出土状況



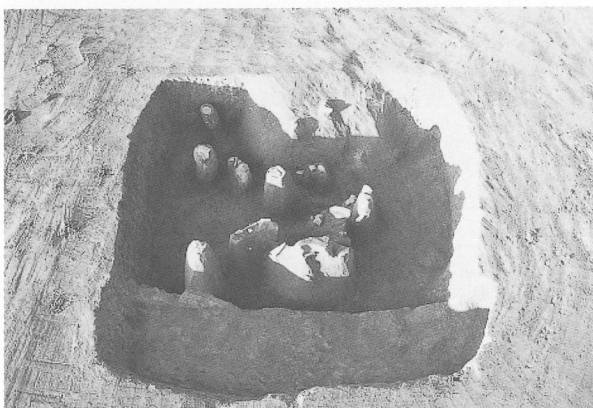
第91号住居跡



第92号住居跡



第93号住居跡



第93号住居跡遺物出土状況



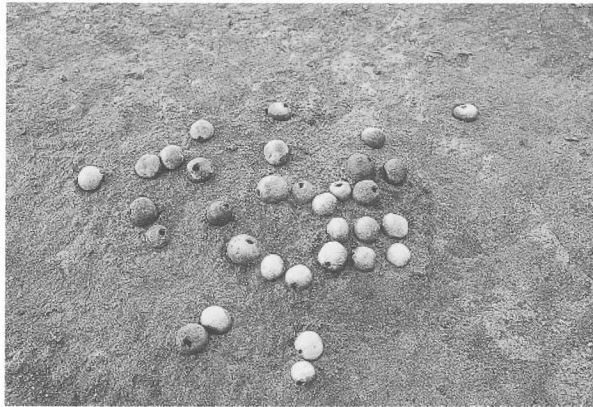
第94号住居跡



第95号住居跡



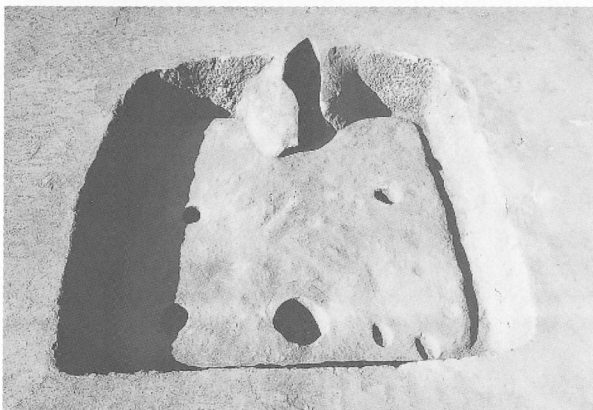
第95号住居跡遺物出土状況



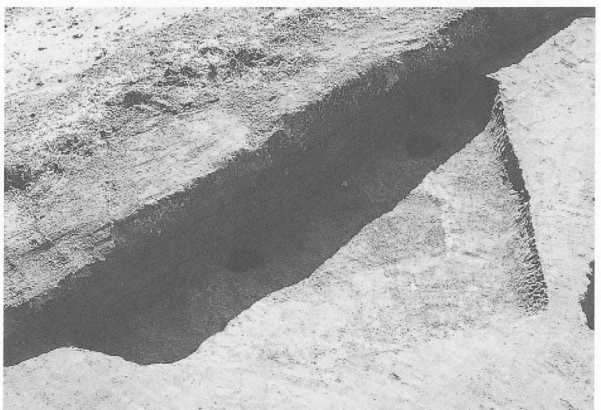
第95号住居跡土玉出土状況



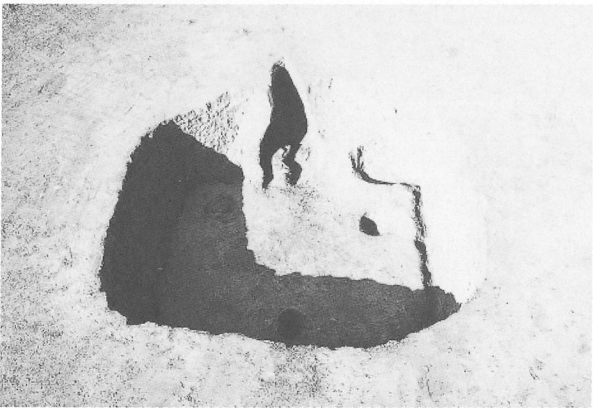
第96号住居跡



第97号住居跡



第98号住居跡



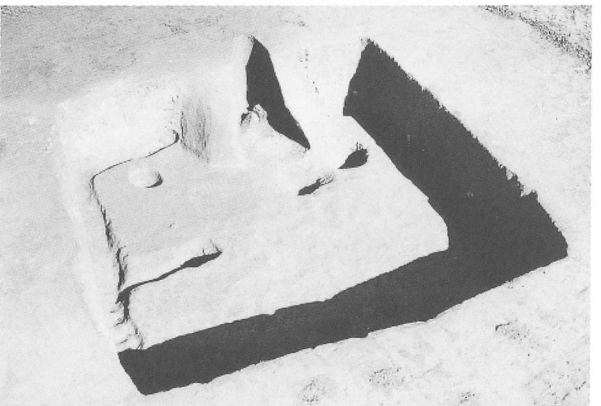
第99号住居跡



第100号住居跡



第101号住居跡



第102号住居跡



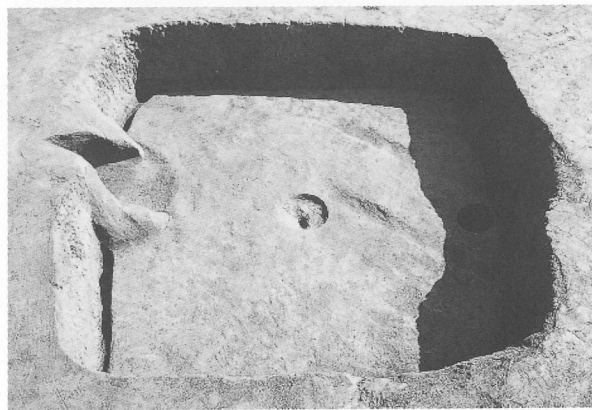
第103号住居跡



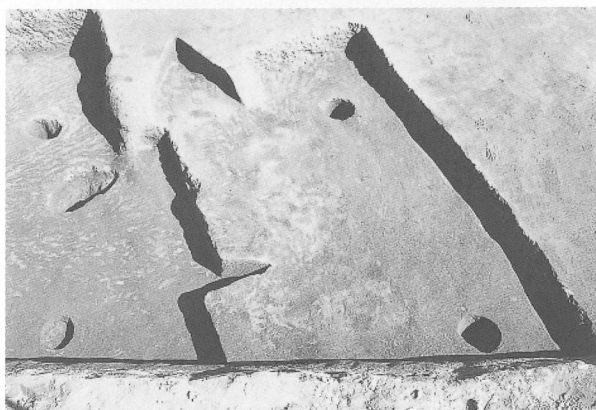
第103号住居跡遺物出土状況



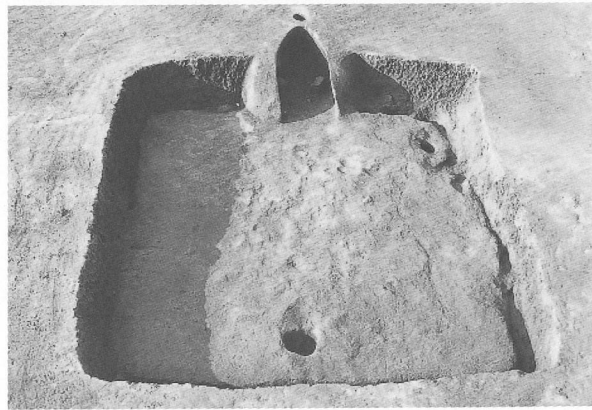
第104号住居跡



第105号住居跡



第106号住居跡



第107号住居跡



第107号住居跡竈遺物出土状況



第1号掘立柱建物跡

PL 20



第1・2・3号溝



第4・5・6・7・8号溝



第9号溝



第14号溝



第17・18号溝



第31号溝



第24号溝



第48号土坑遺物出土狀況



第53号土坑遺物出土狀況



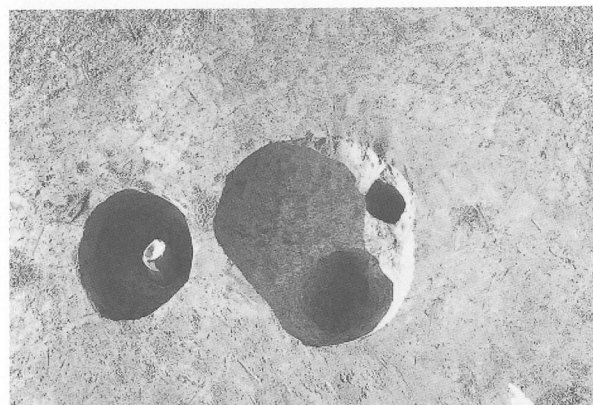
第92・99号土坑遺物出土狀況



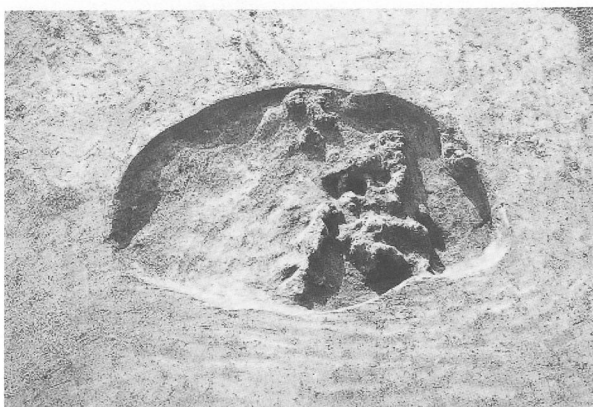
第134号土坑遺物出土狀況



第135号土坑遺物出土狀況



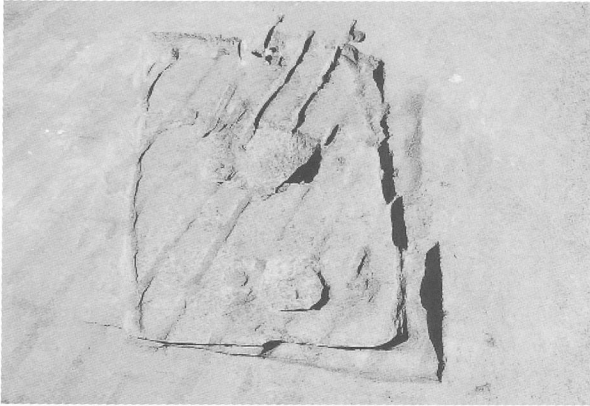
第137・148号土坑



第140号土坑



第165号土坑



第1号鍛冶工房跡



第1号鍛冶工房跡遺物出土状況



第1号鍛冶工房跡炉



第1号鍛冶工房跡遺物出土状況



第2号鍛冶工房跡遺物出土状況



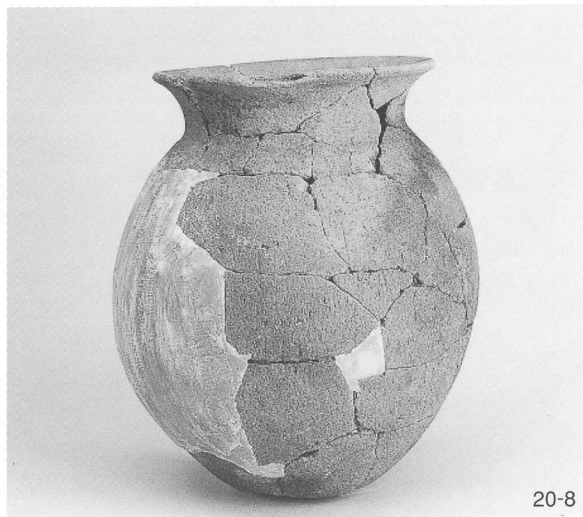
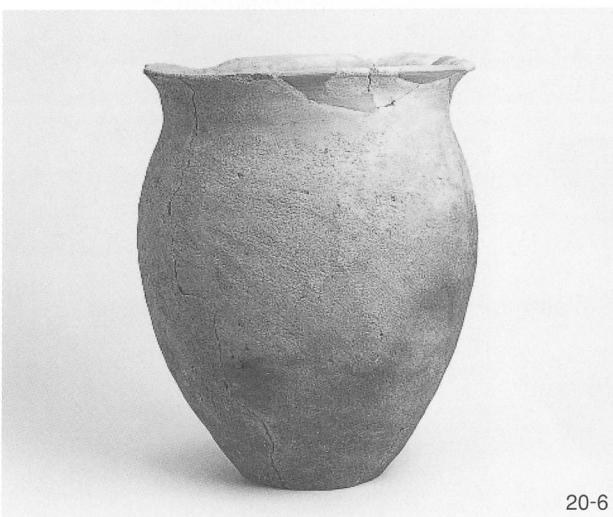
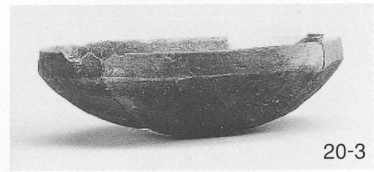
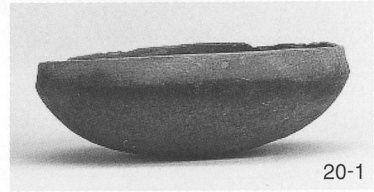
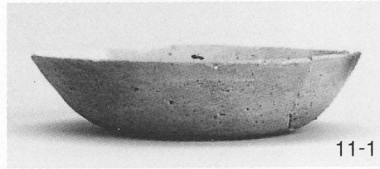
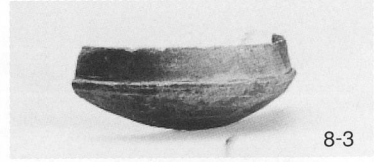
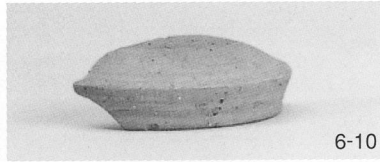
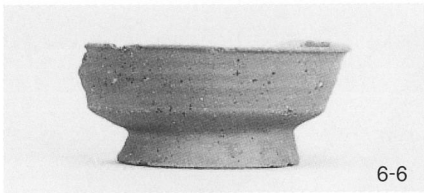
第2号鍛冶工房跡炉



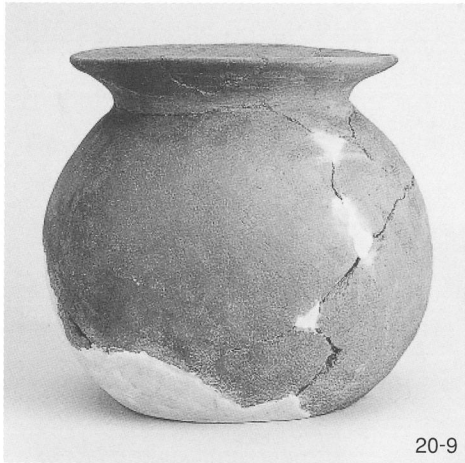
第2号鍛冶工房跡炉遺物出土状況



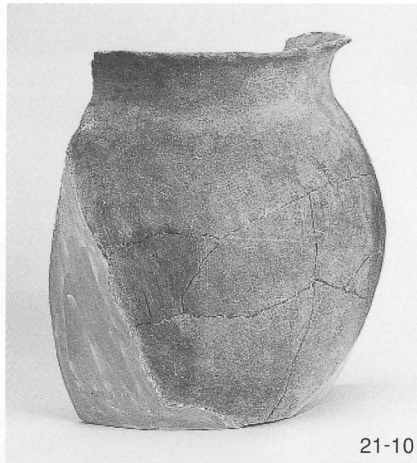
第2号土坑鍛冶工房跡炉遺物出土状況



第1~3・5~7号住居跡出土遺物



20-9



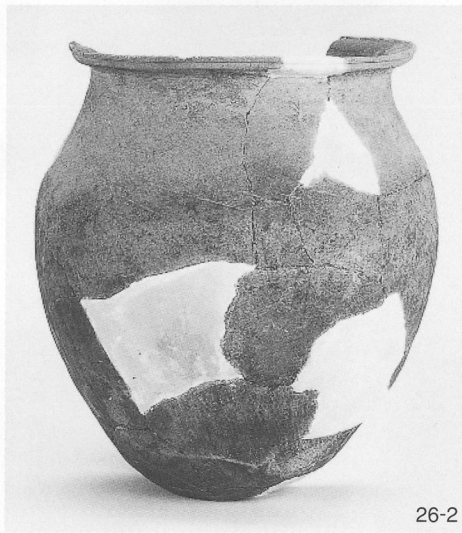
21-10



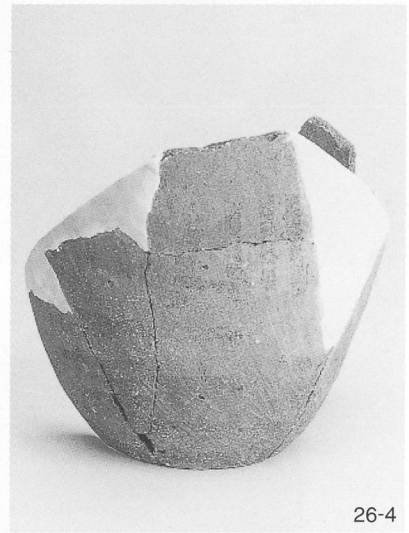
23-2



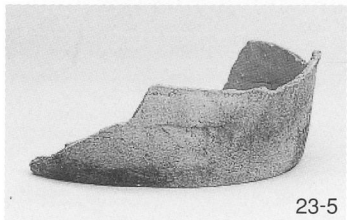
23-1



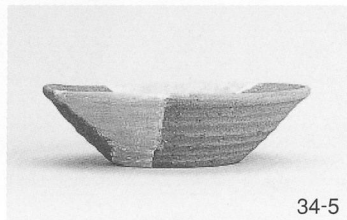
26-2



26-4



23-5



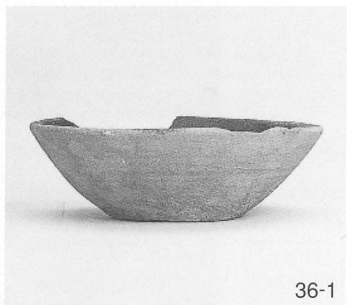
34-5



29-1



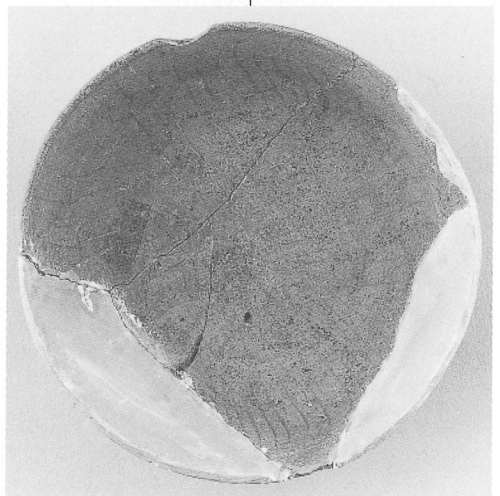
34-3



36-1



36-6





36-7



36-8



P.98



P.98



39-1



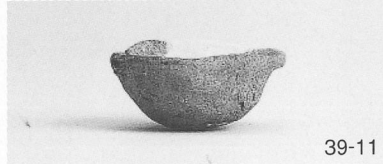
39-2



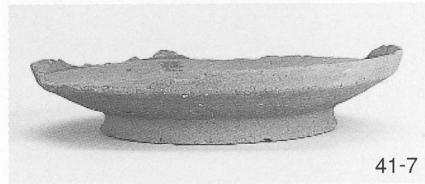
39-5



39-9



39-11



41-7



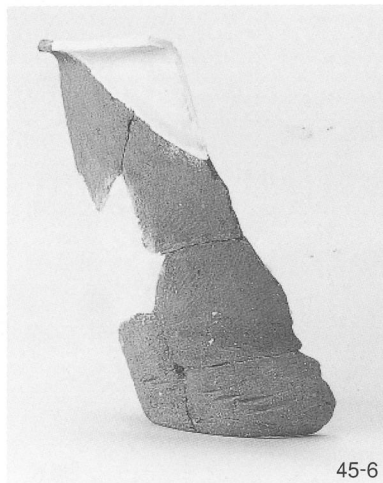
43-1



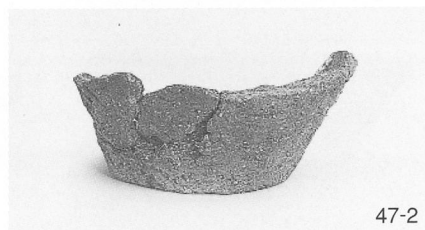
41-8



39-10



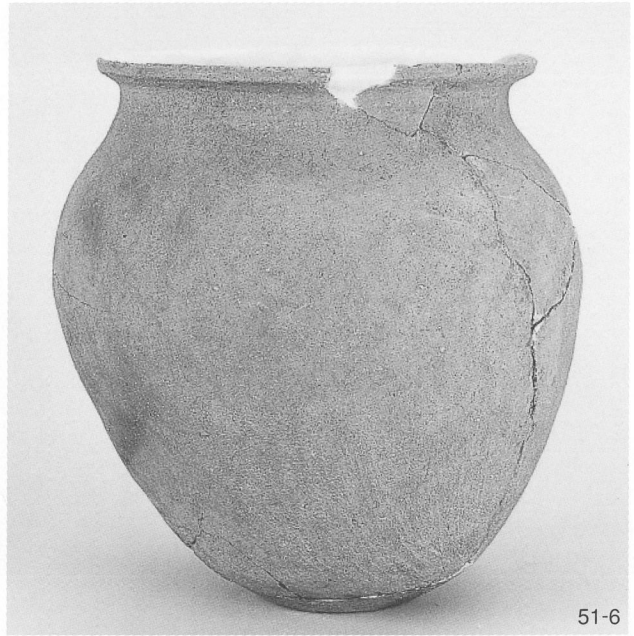
45-6

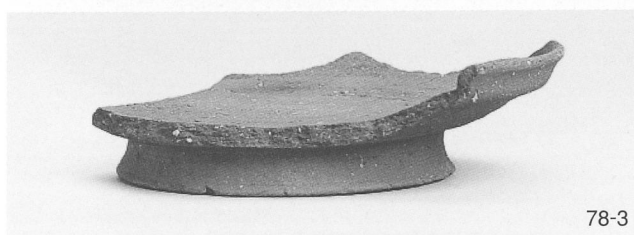


47-2

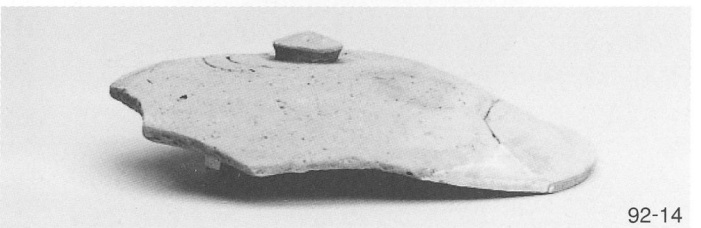
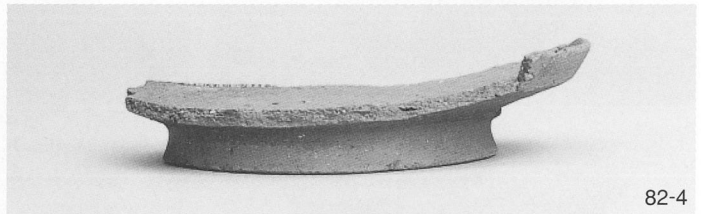


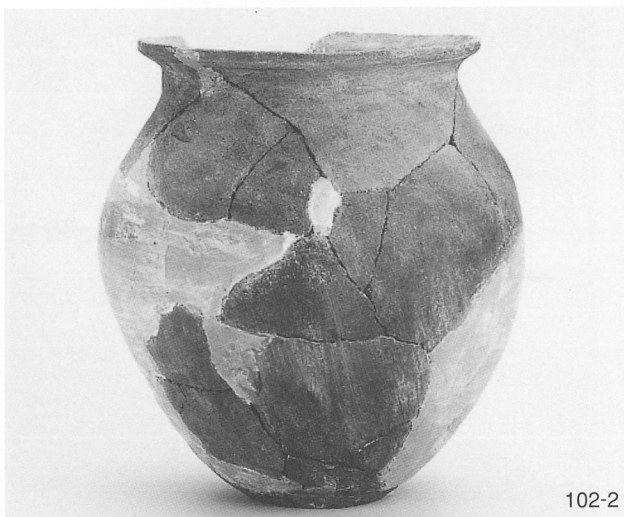
47-3



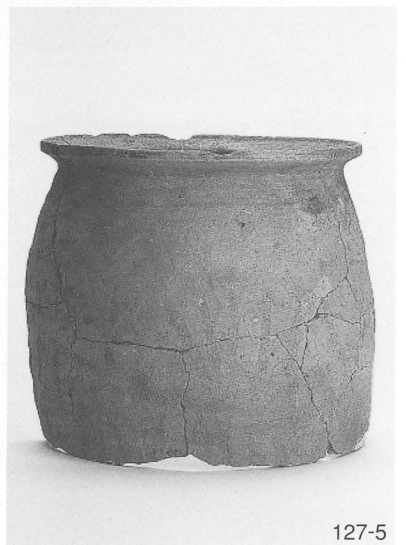
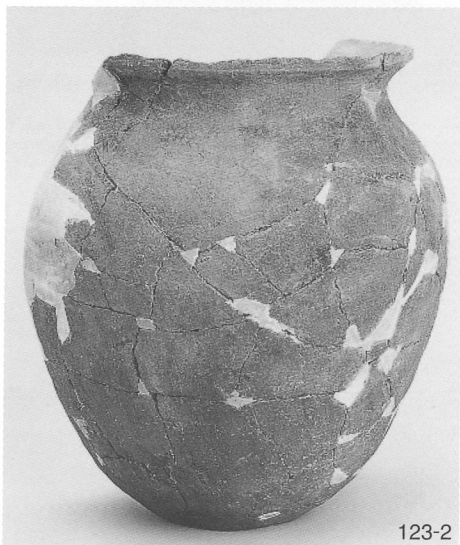
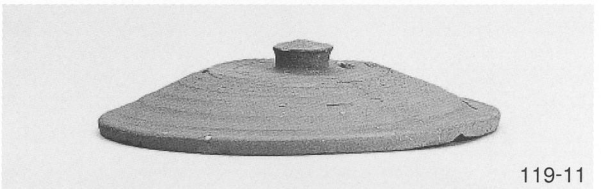
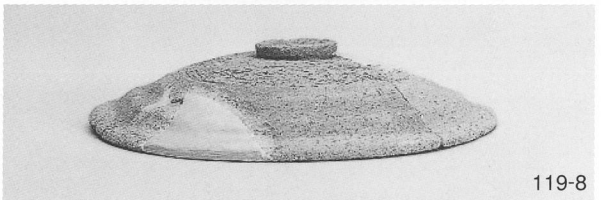
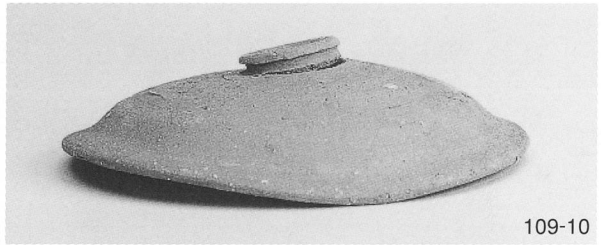


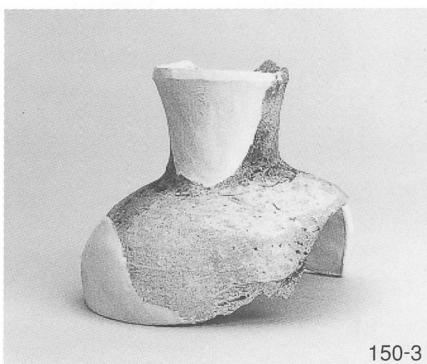
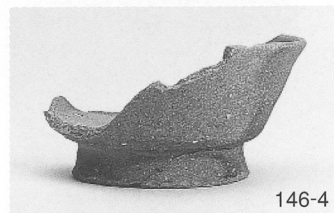
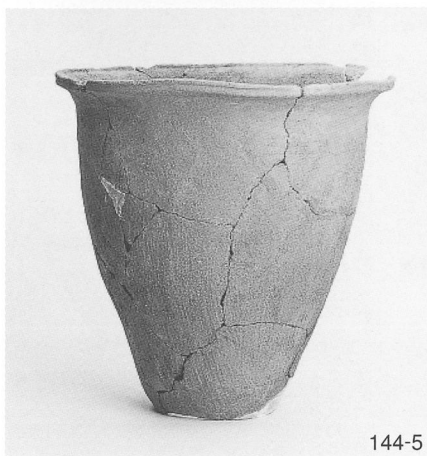
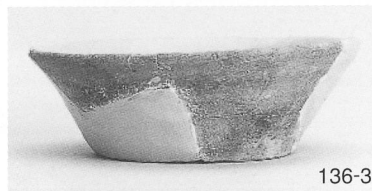
第24~26・28・30・31・35・36号住居跡出土遺物



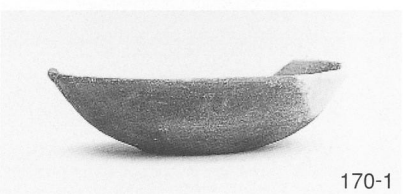
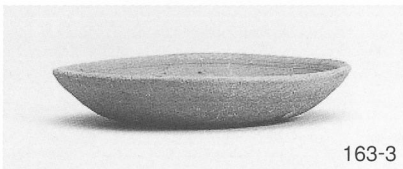
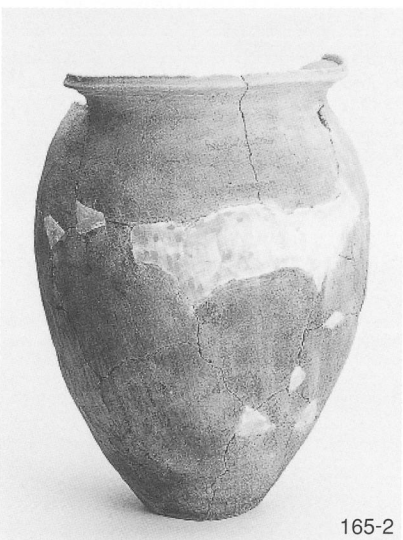
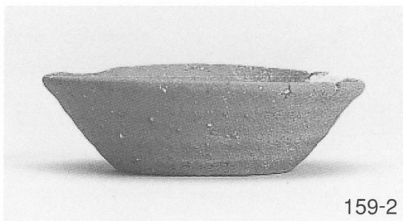
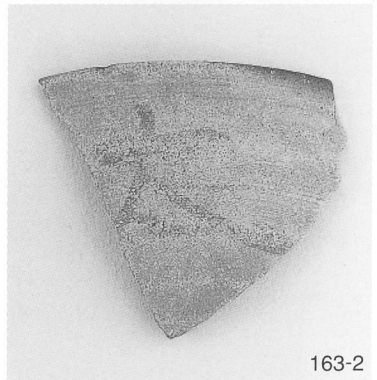
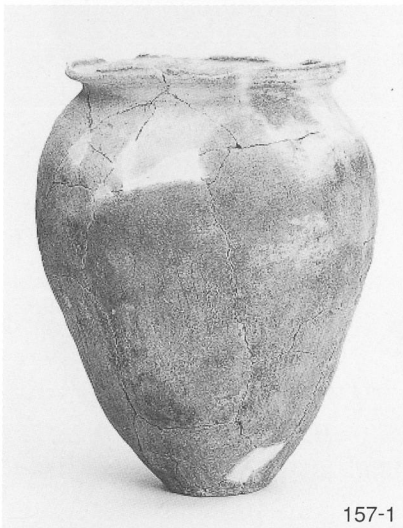
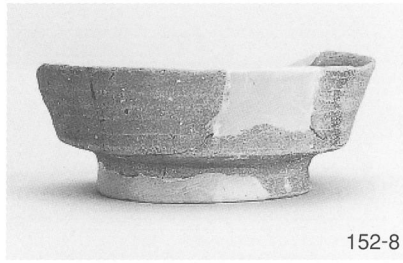
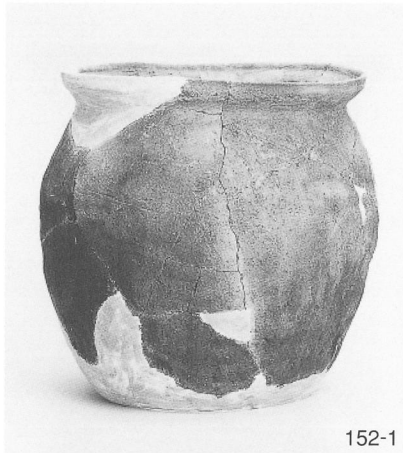


第46～48号住居跡出土遺物



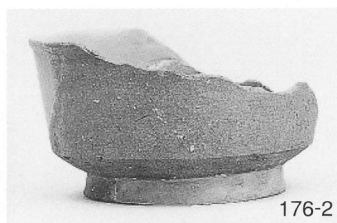


第60・62・63・66~68・70・71号住居跡出土遺物





176-1



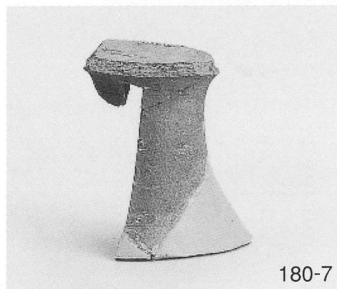
176-2



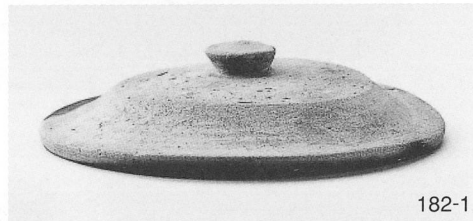
178-8



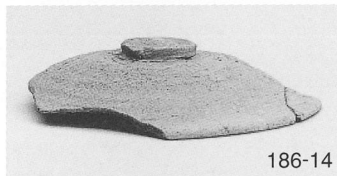
180-1



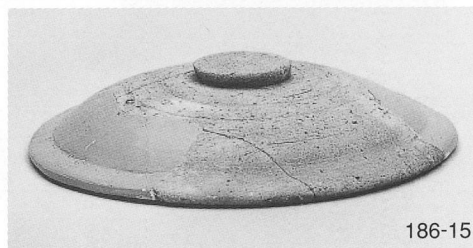
180-7



182-1



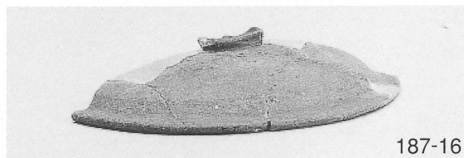
186-14



186-15



182-3



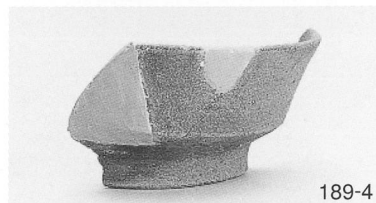
187-16



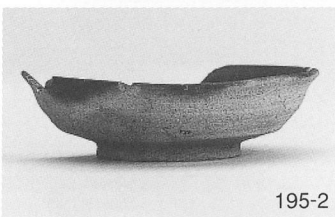
189-2



189-3



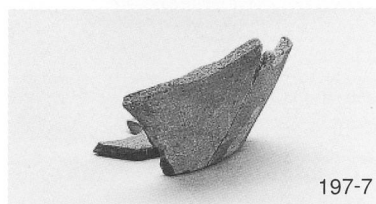
189-4



195-2



195-7



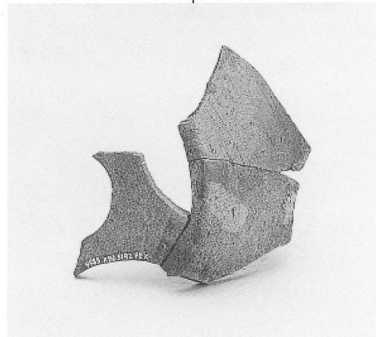
197-7



197-4



204-2





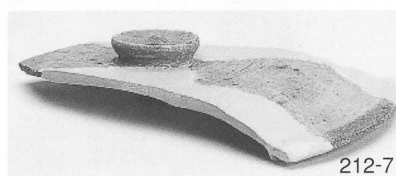
205-16



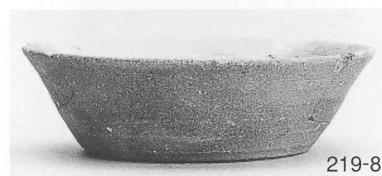
212-2



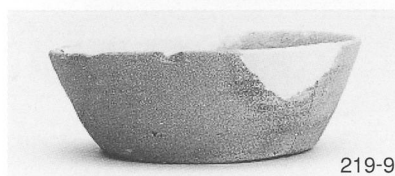
212-5



212-7



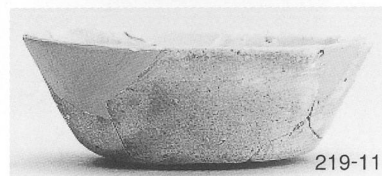
219-8



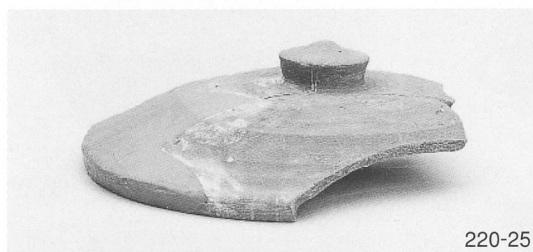
219-9



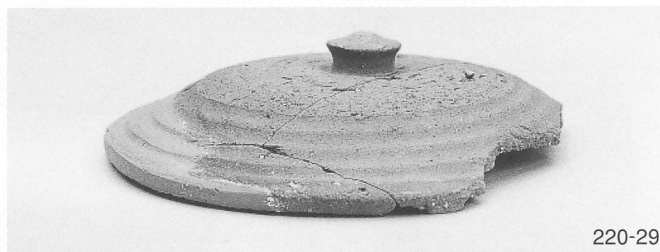
219-10



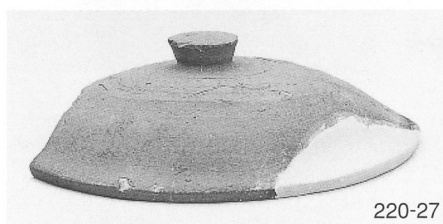
219-11



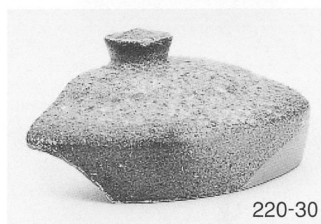
220-25



220-29



220-27



220-30



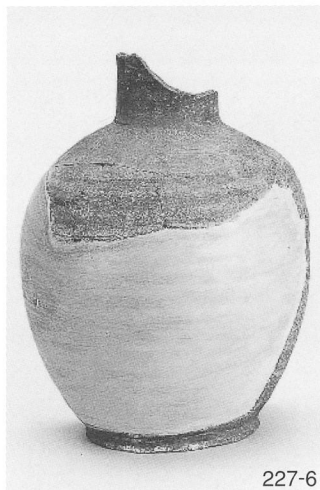
223-3



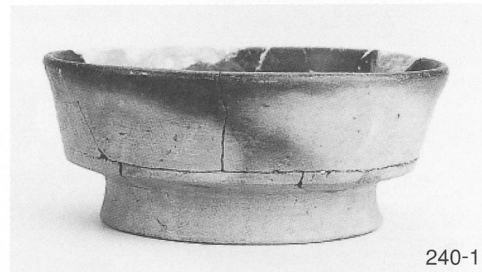
223-6



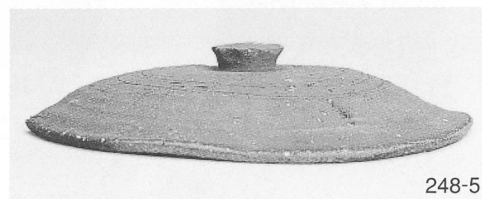
229-3



227-6



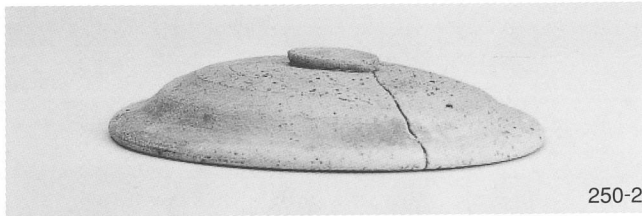
240-1



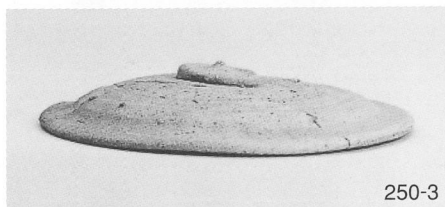
248-5



248-2



250-2



250-3



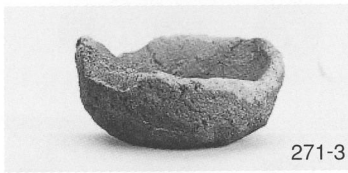
251-2



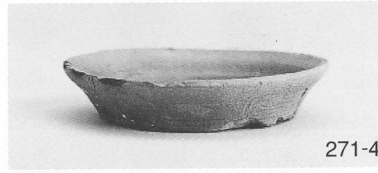
267-2



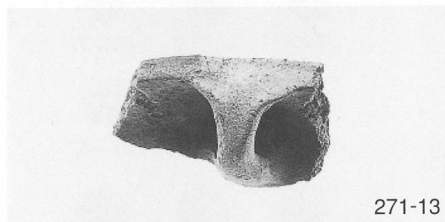
267-3



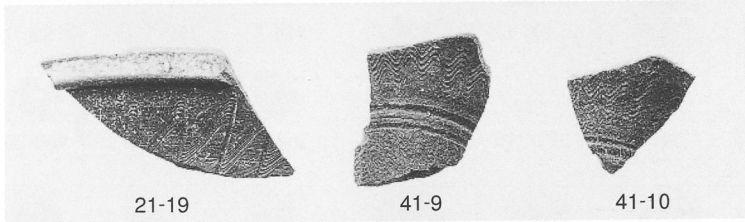
271-3



271-4



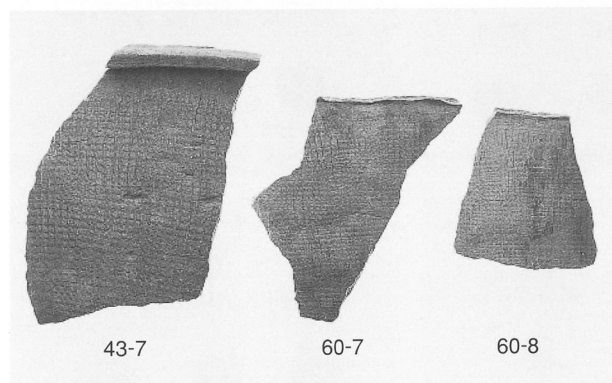
271-13



21-19

41-9

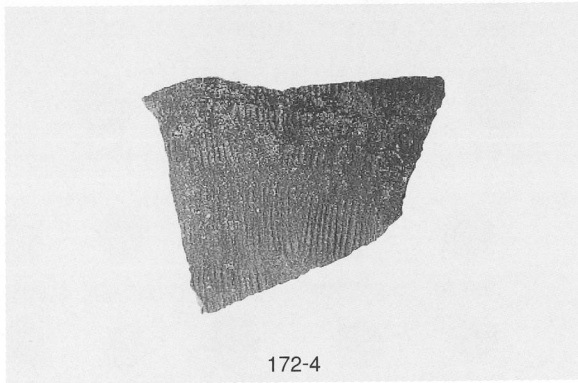
41-10



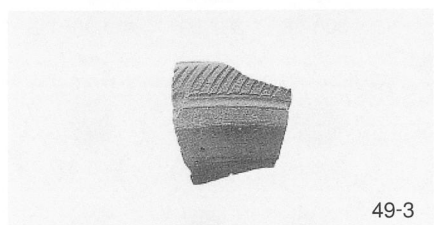
43-7

60-7

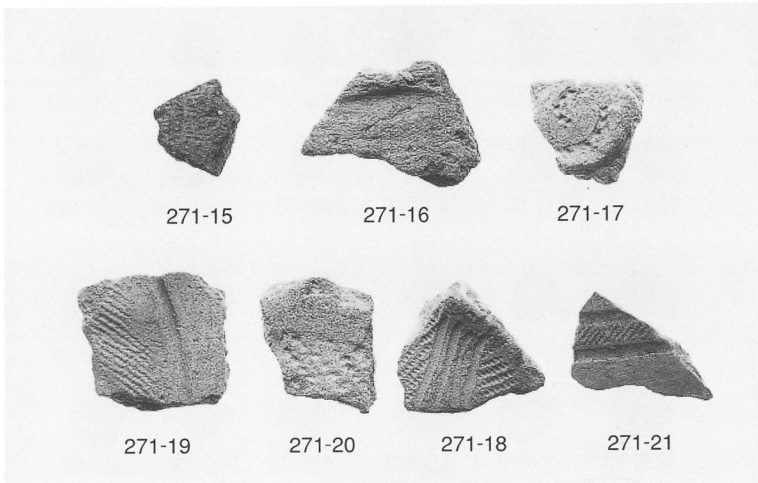
60-8



172-4



49-3



271-15

271-16

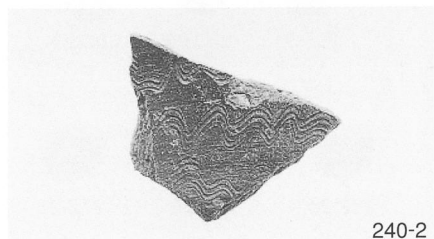
271-17

271-19

271-20

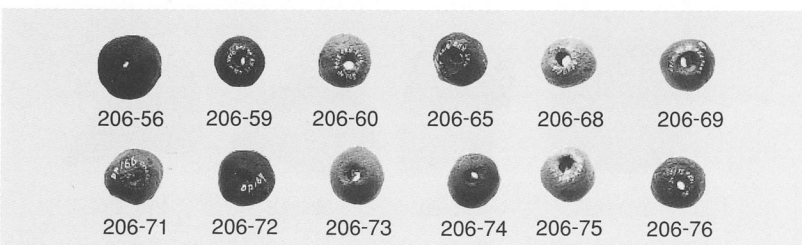
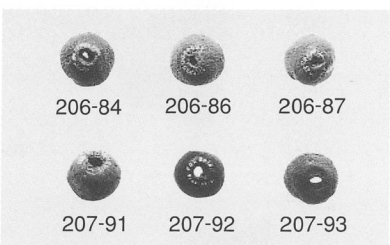
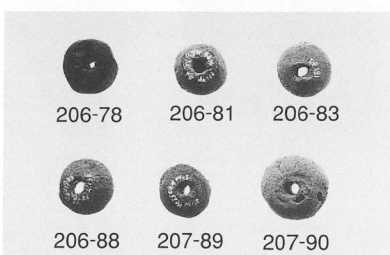
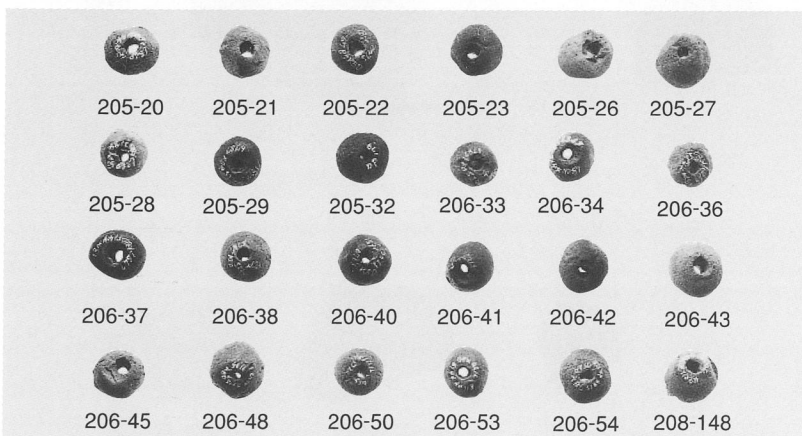
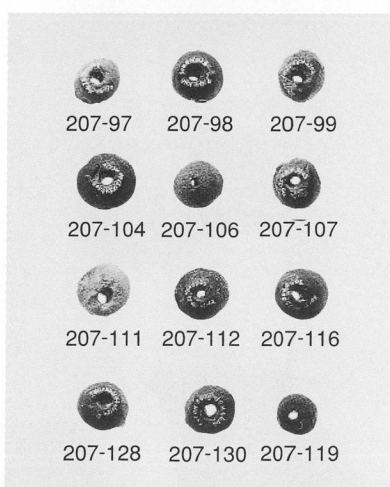
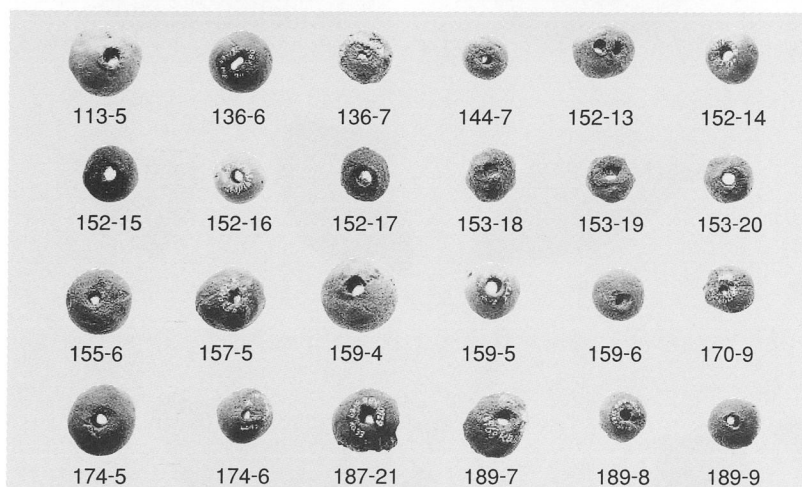
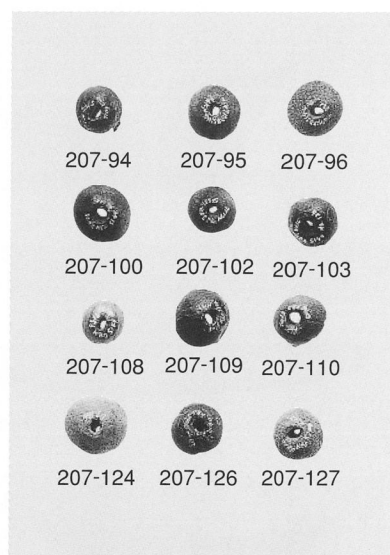
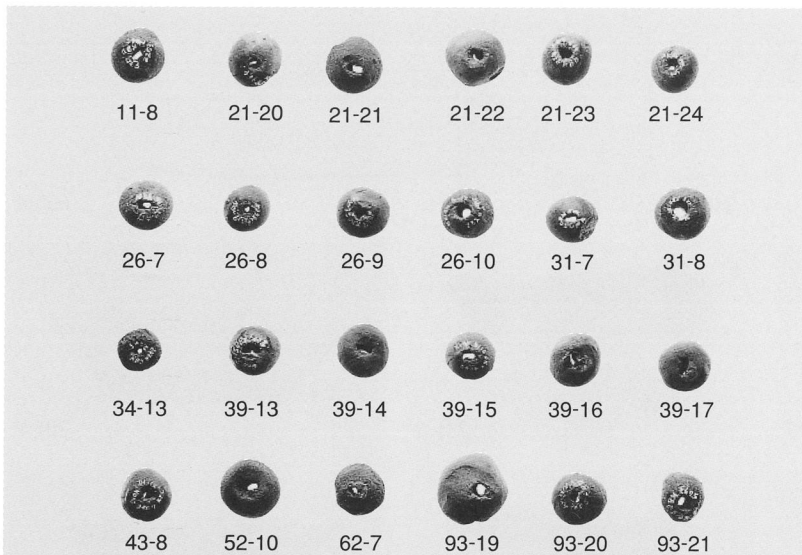
271-18

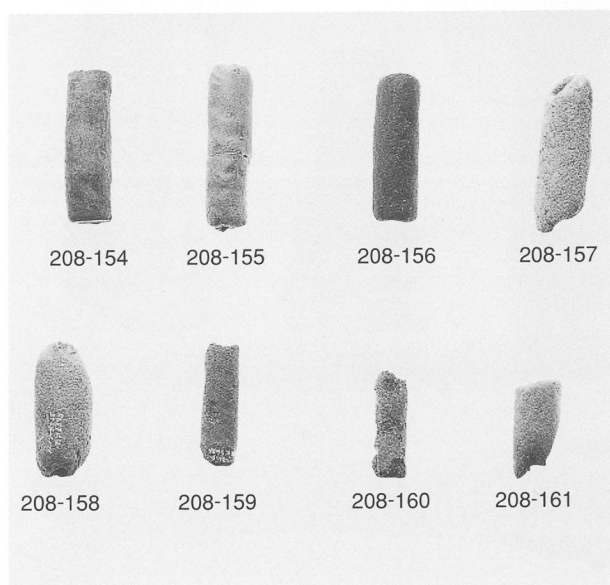
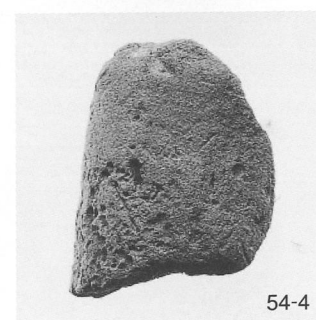
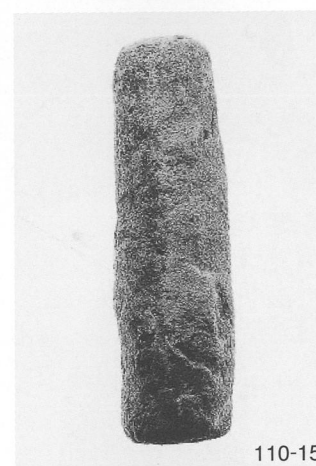
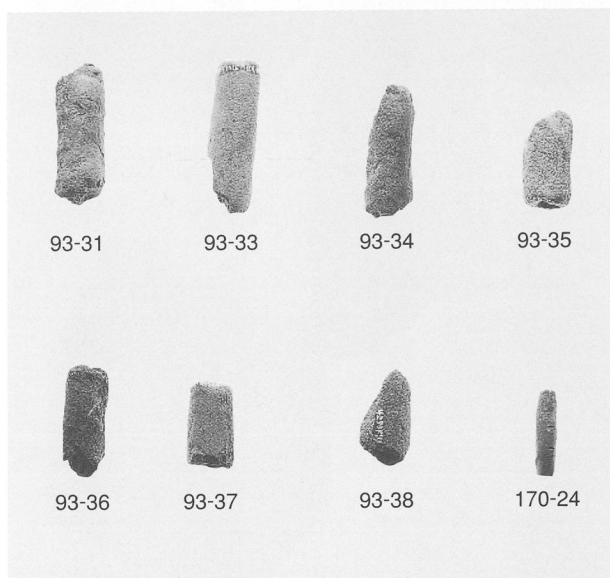
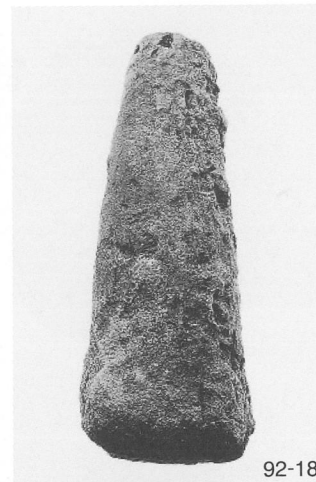
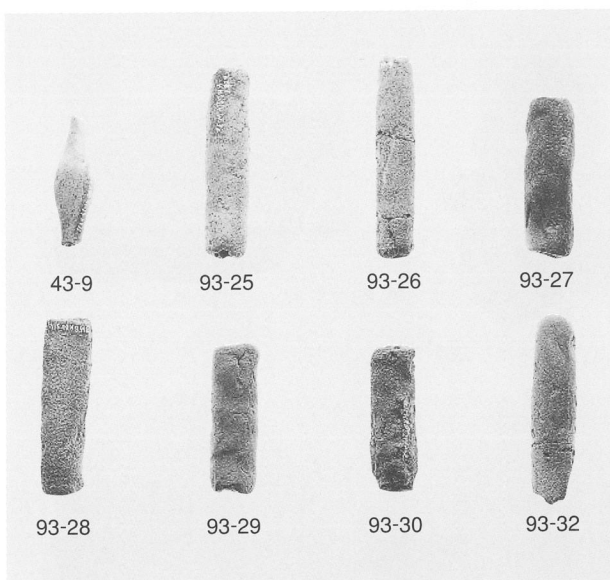
271-21

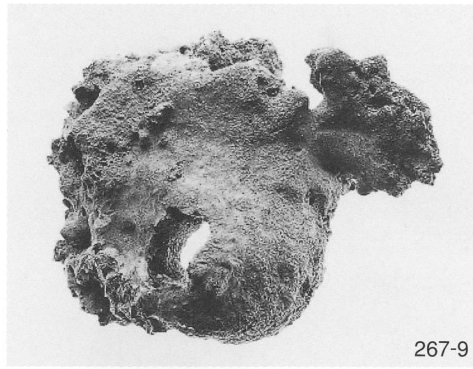


240-2

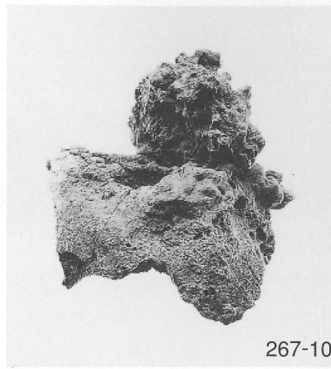
第14・45・48号土坑，第1号鍛冶工房跡，遺構外出土土器



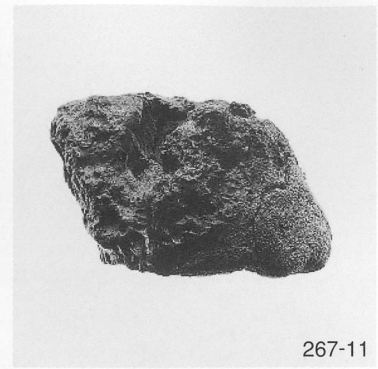




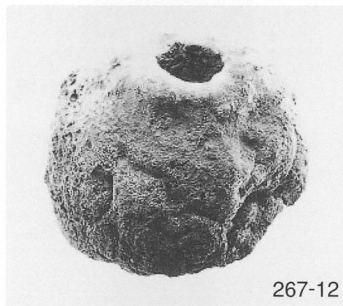
267-9



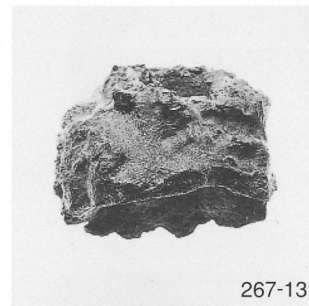
267-10



267-11



267-12



267-13



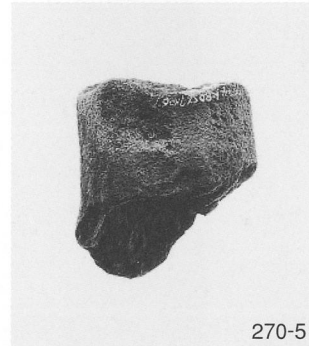
270-3



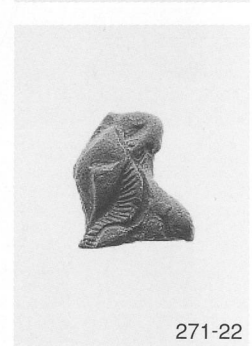
271-21



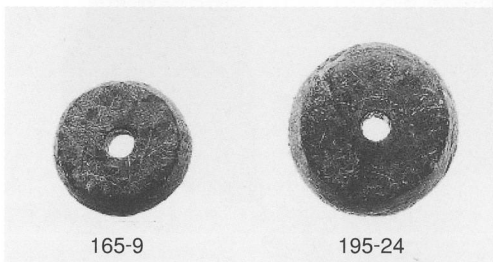
270-4



270-5

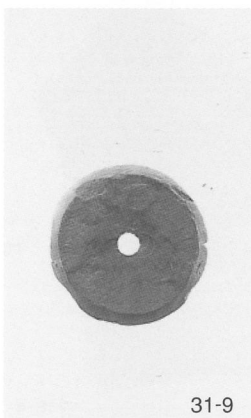


271-22

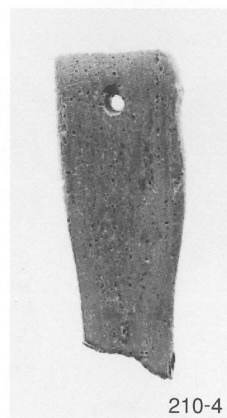


165-9

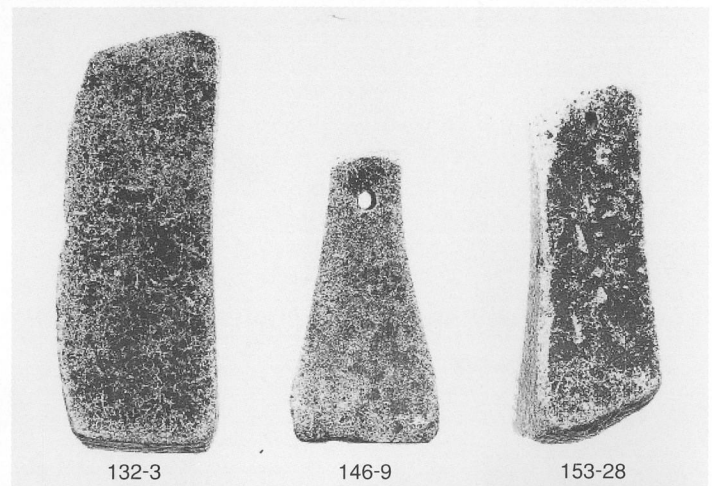
195-24



31-9



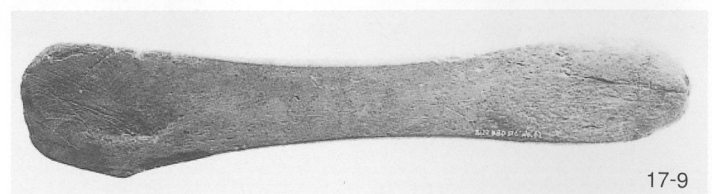
210-4



132-3

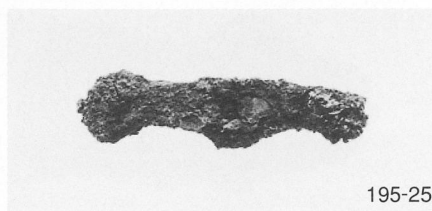
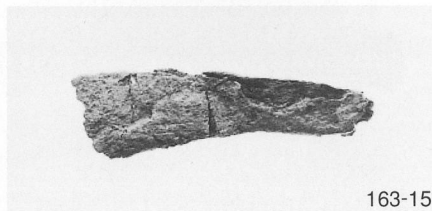
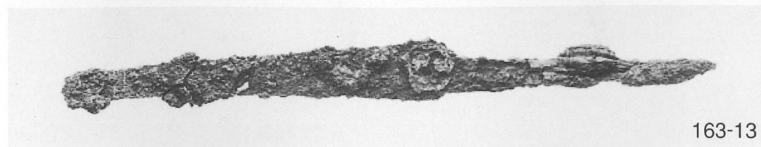
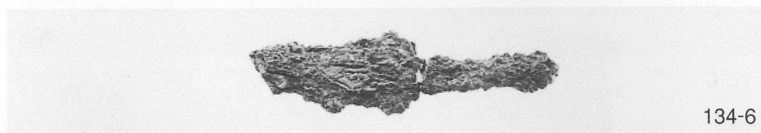
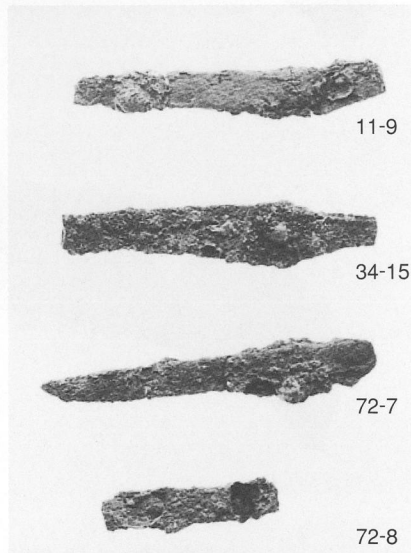
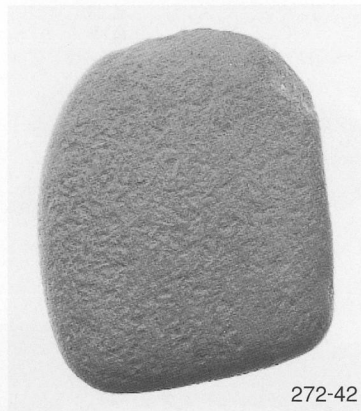
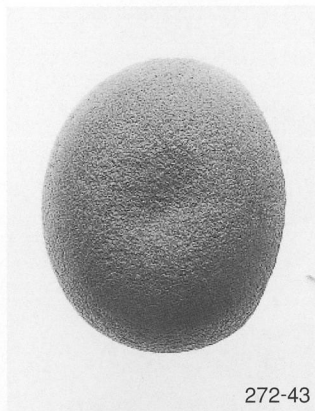
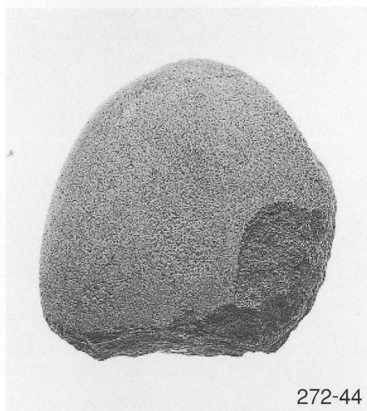
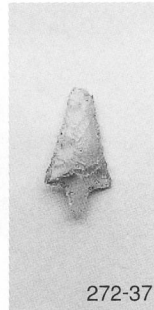
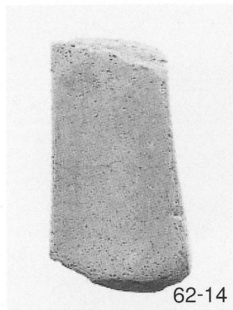
146-9

153-28



17-9

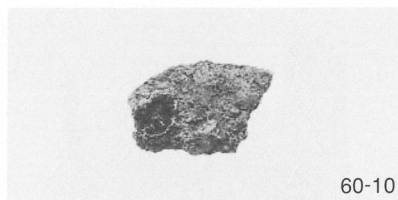
出土土製品, 石製品



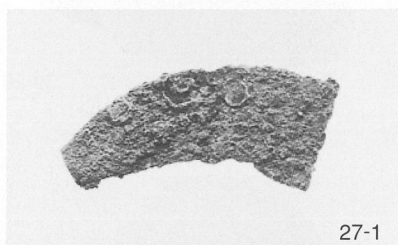
出土石製品，鐵製品



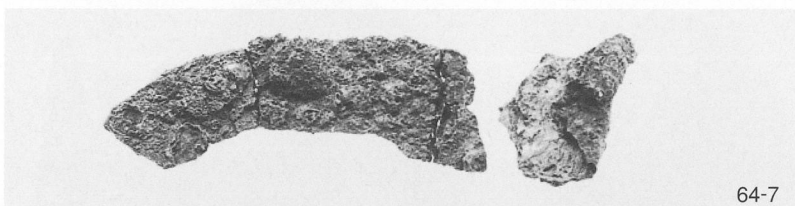
60-9



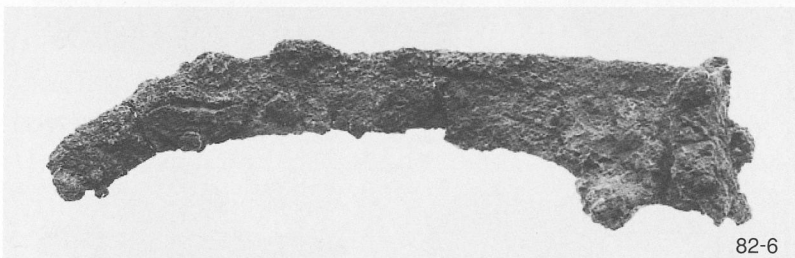
60-10



27-1



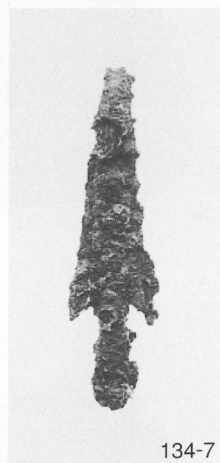
64-7



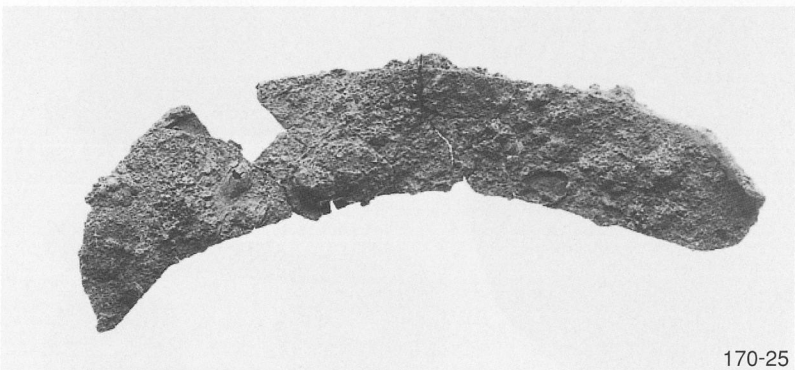
82-6



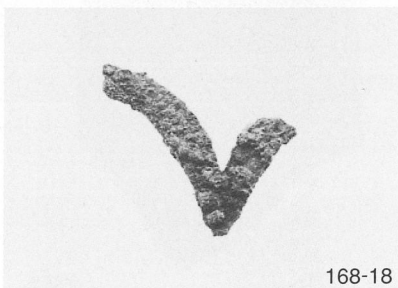
41-13



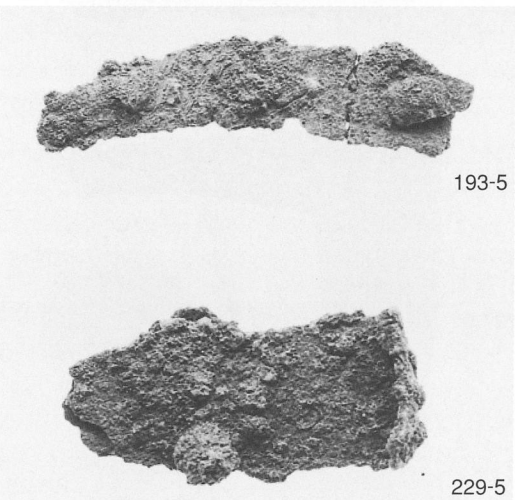
134-7



170-25

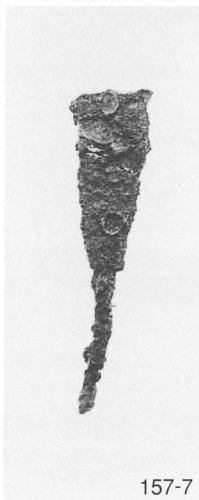


168-18

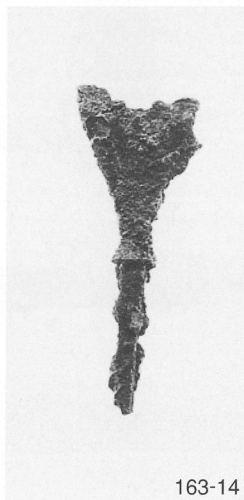


193-5

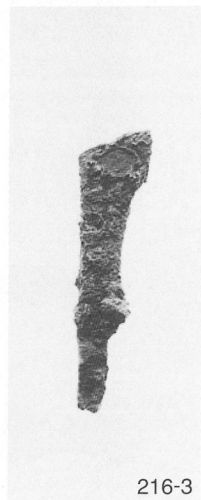
229-5



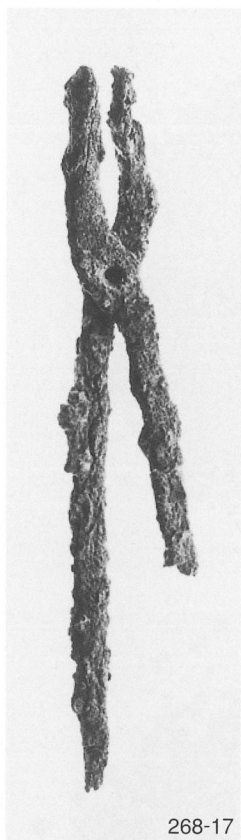
157-7



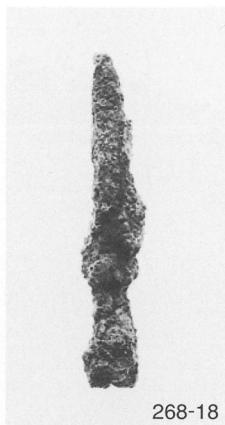
163-14



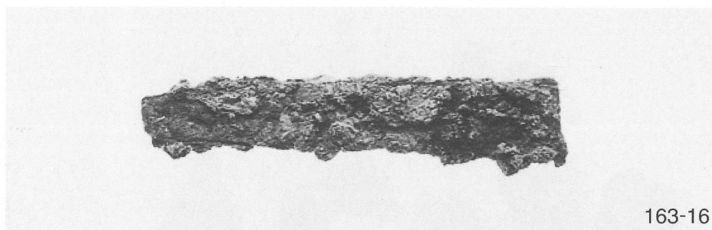
216-3



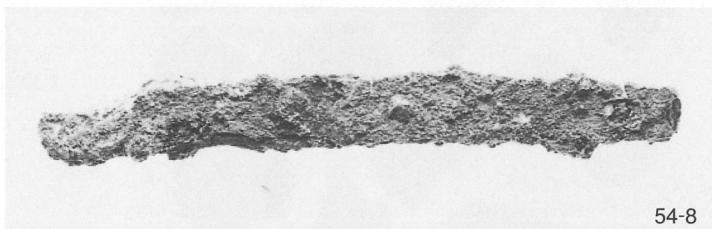
268-17



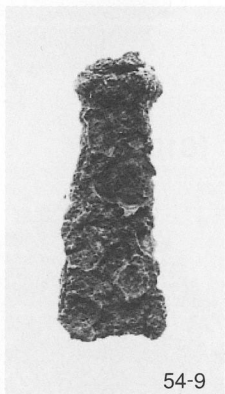
268-18



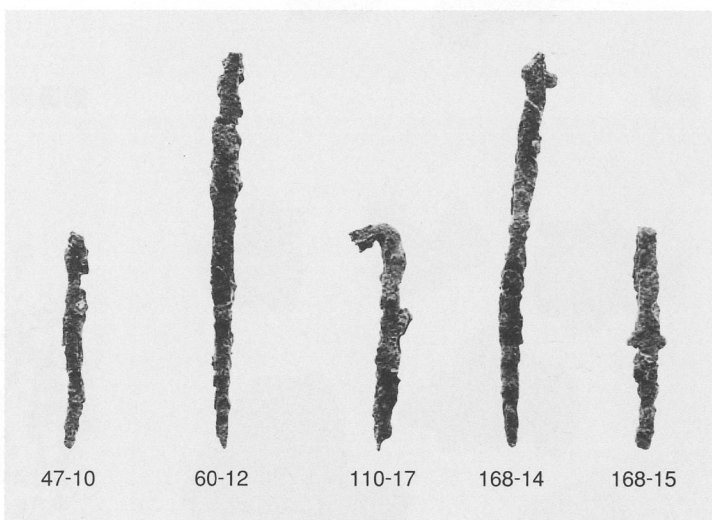
163-16



54-8



54-9



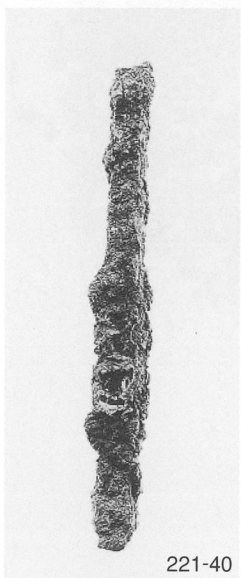
47-10

60-12

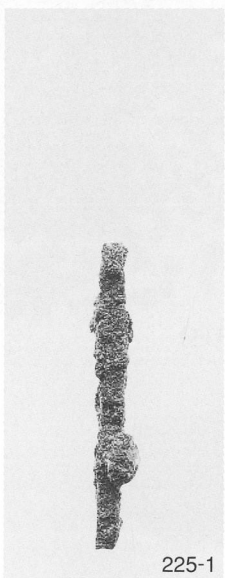
110-17

168-14

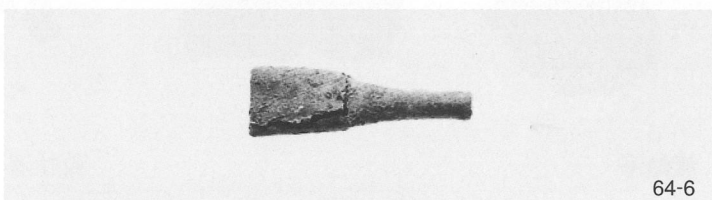
168-15



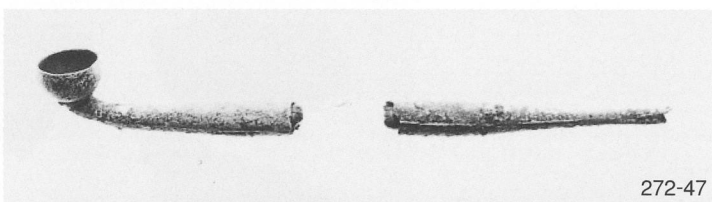
221-40



225-1



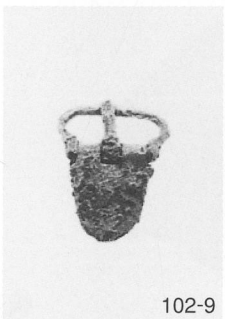
64-6



272-47



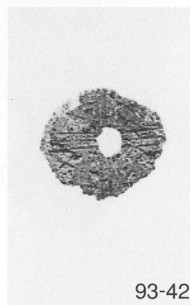
72-6



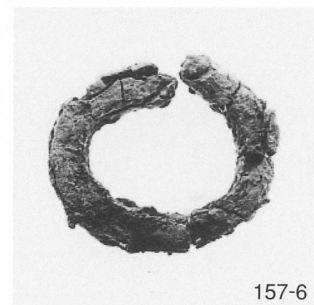
102-9



26-12

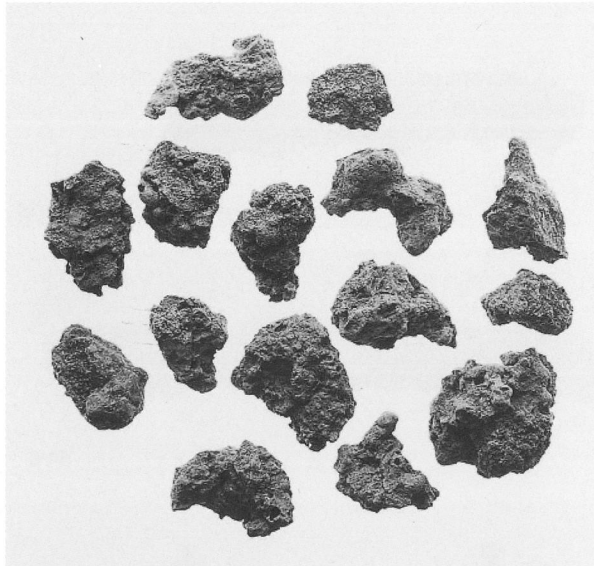


93-42

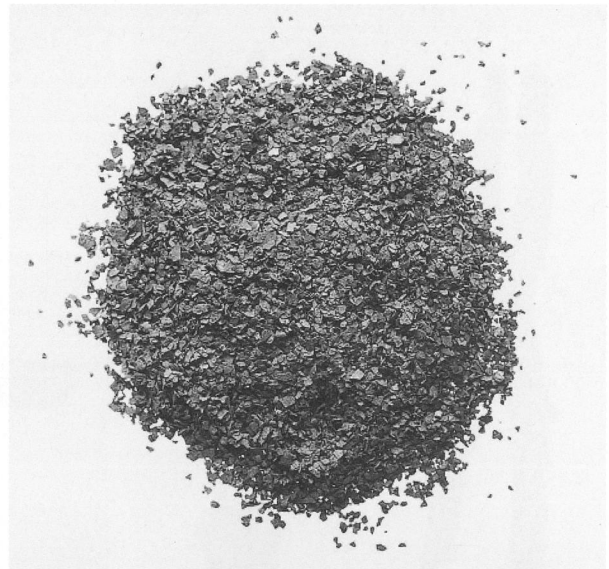


157-6

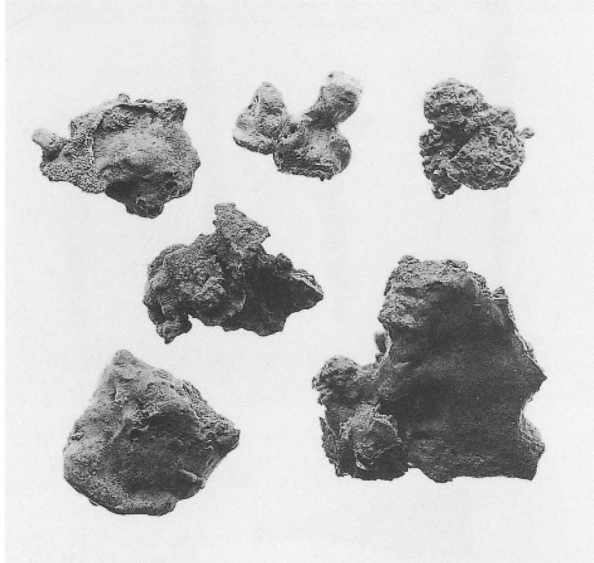
出土金属製品



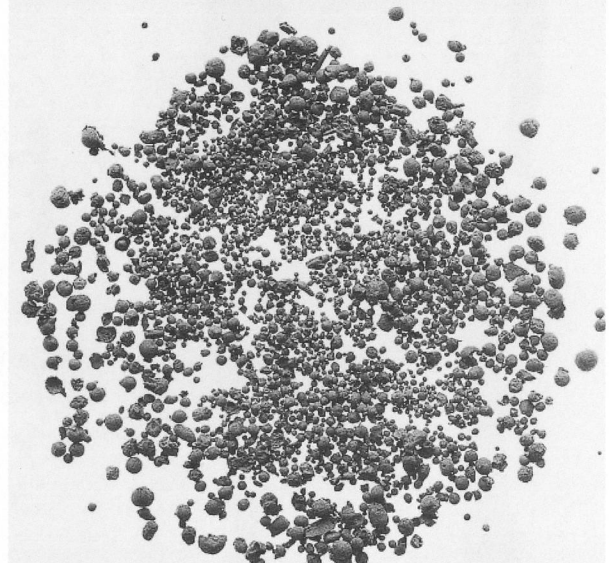
鉄滓



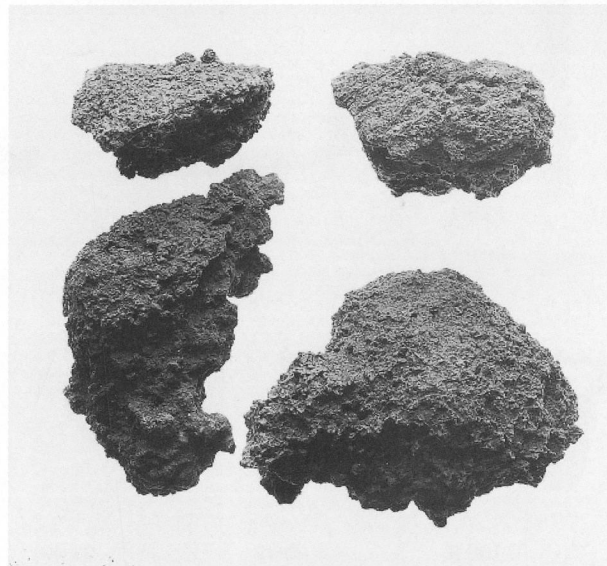
鍛造剥片 (C12)



流動滓



粒状滓 (D5)



椀形滓

茨城県教育財団文化財調査報告第140集
北浦複合団地造成事業地内
埋蔵文化財調査報告書Ⅱ
木工台遺跡 1

平成10（1998）年9月25日印刷

平成10（1998）年9月30日発行

発行 財団法人 茨城県教育財団
水戸市見和1丁目356番地の2
TEL 029-225-6587

印刷 株式会社高野高速印刷
水戸市東原2-8-1
TEL 029-231-0989

付 図

茨城県教育財団文化財調査報告第140集

木工台遺跡 1

付図 木工台遺跡遺構全体図

