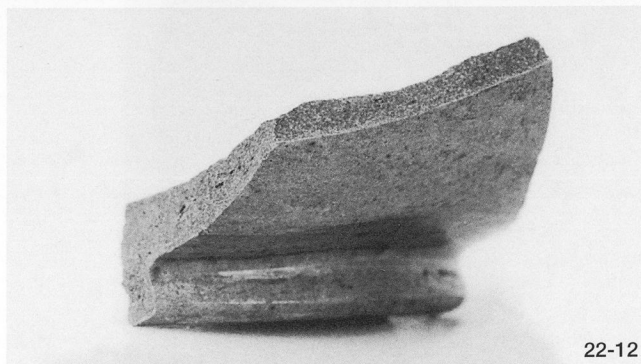




22-1



22-12



22-2



22-7



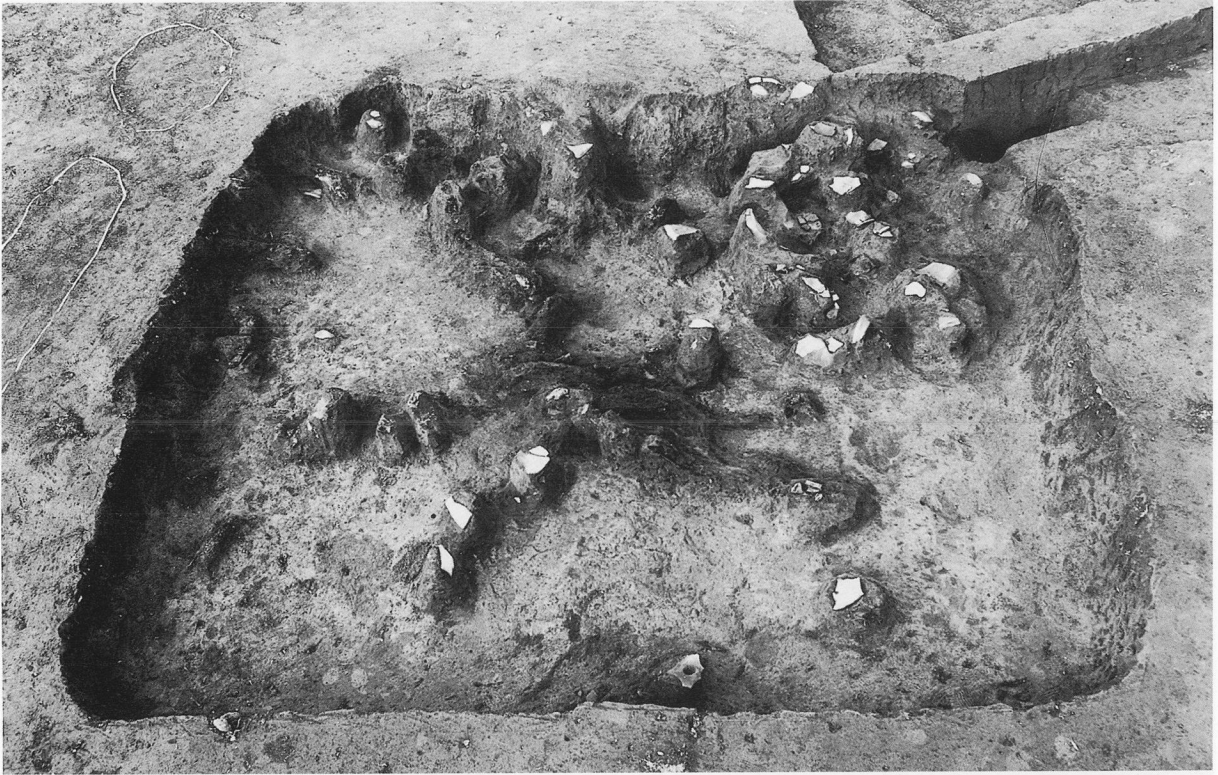
22-6



22-13

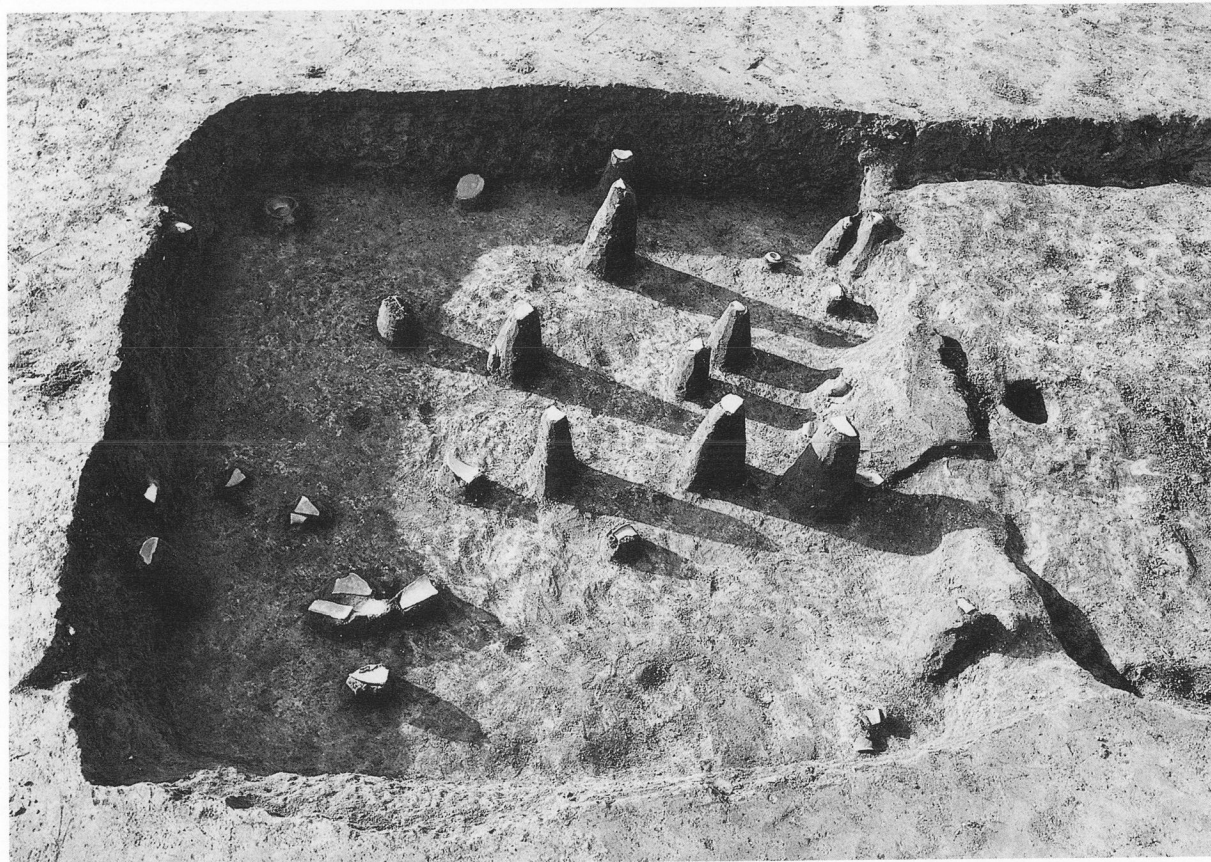


22-14



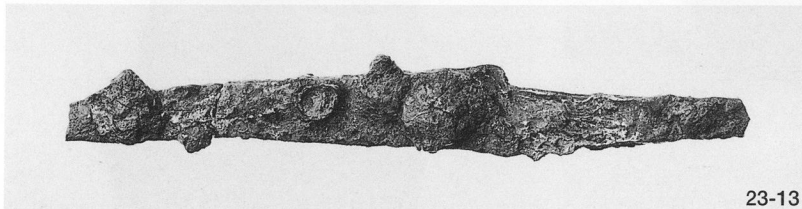
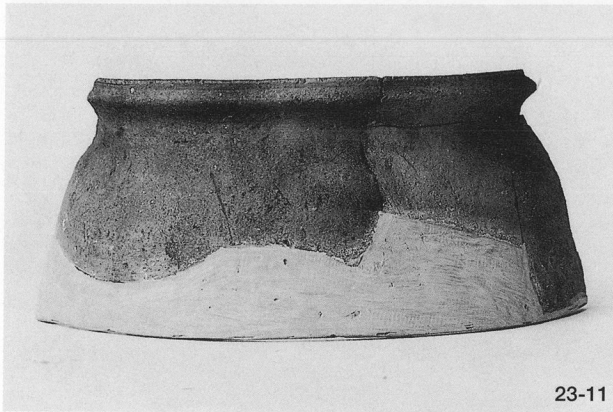
第22号住居跡遺物出土状況・出土遺物





第23号住居跡出土遺物状況・出土遺物

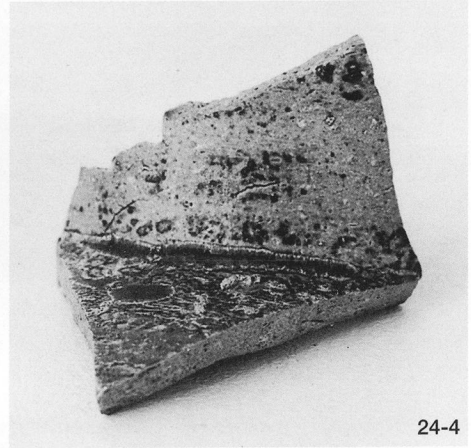
PL38







24-1



24-4

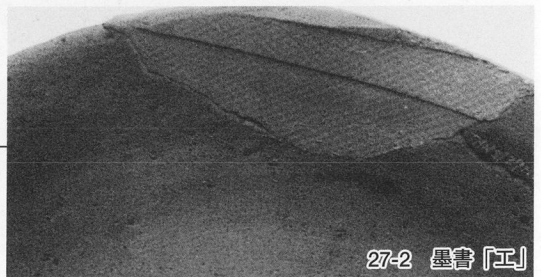


24-3

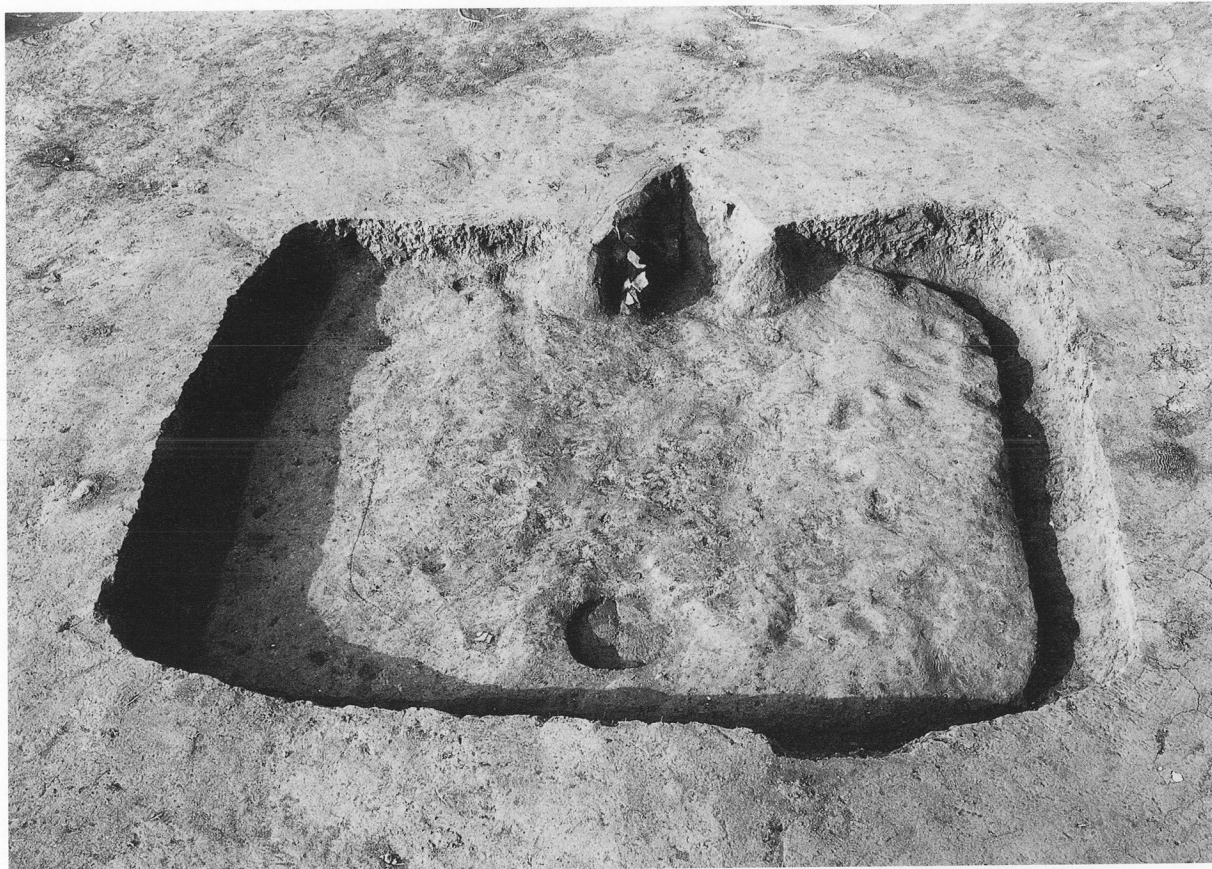


24-2

PL40







第28・29号住居跡



29-1



29-2



29-6

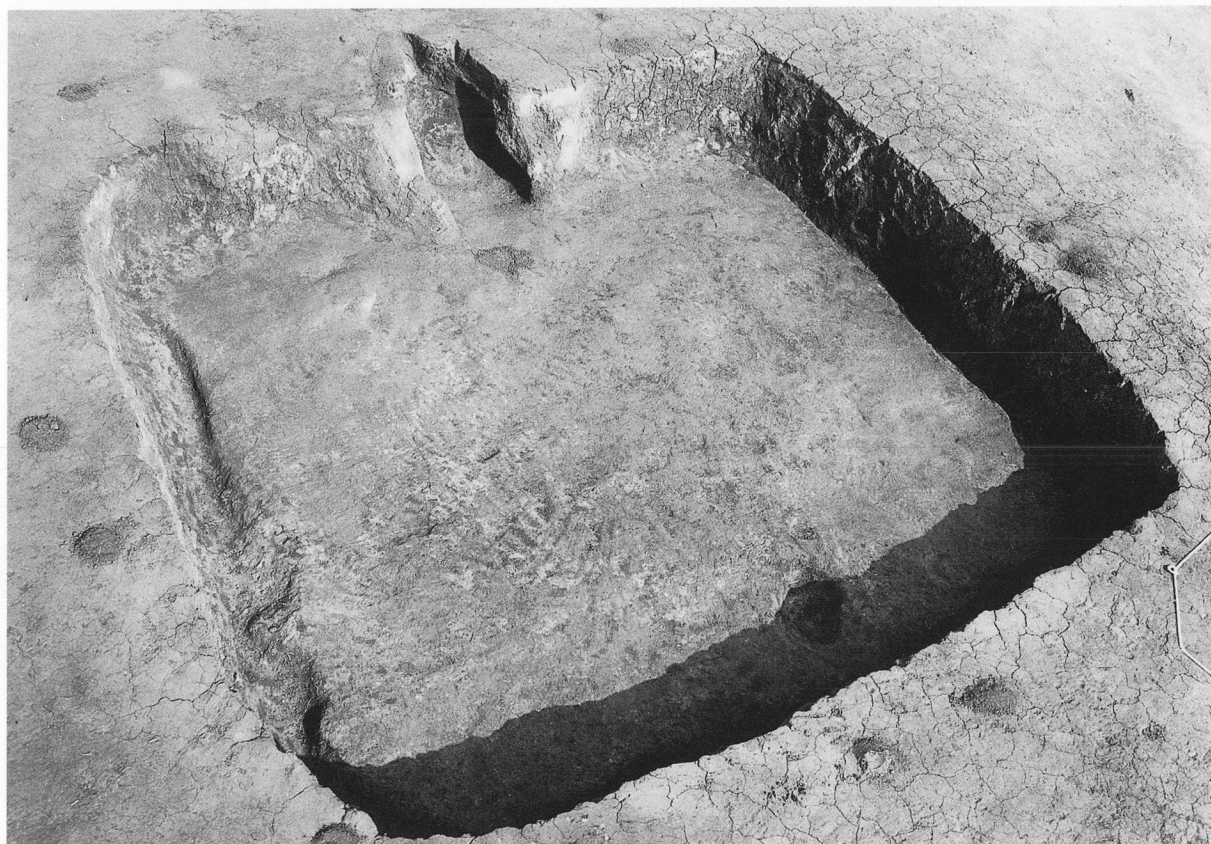


29-4



29-5





30-2



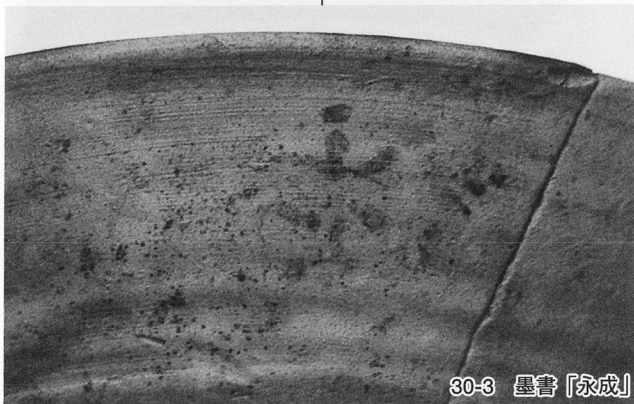
30-4



30-3



30-1



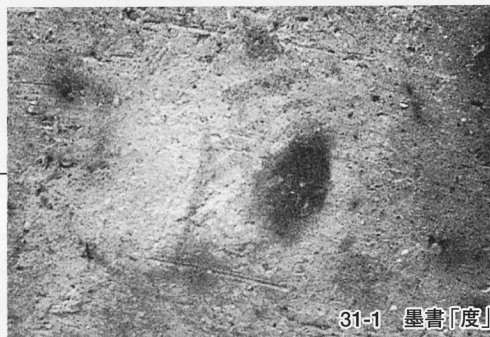
30-3 墨書「永成」



30-1 墨書「永成」



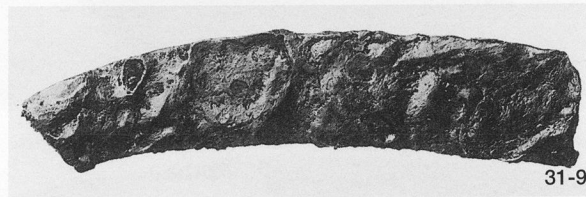
31-1



31-1 墨書「度」



31-5



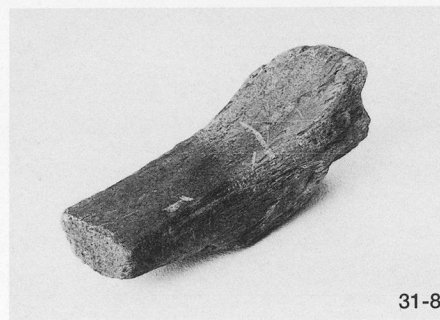
31-9



31-3



31-6



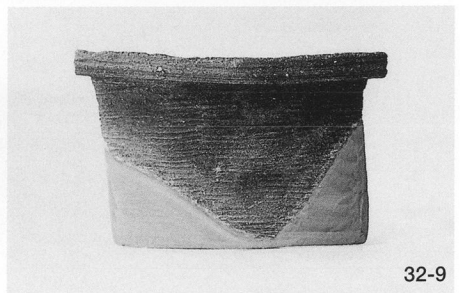
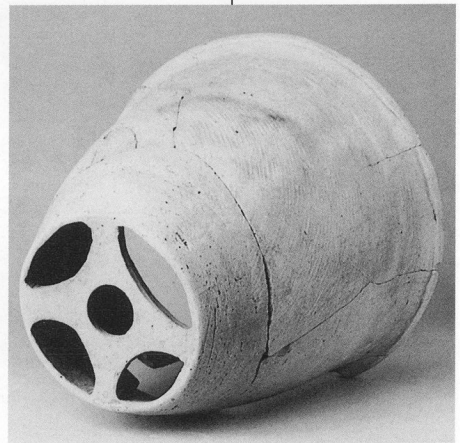
31-8





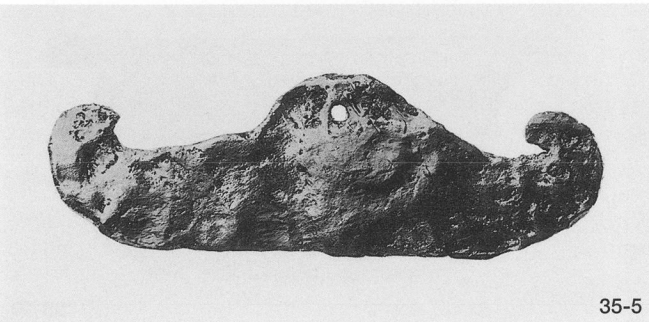
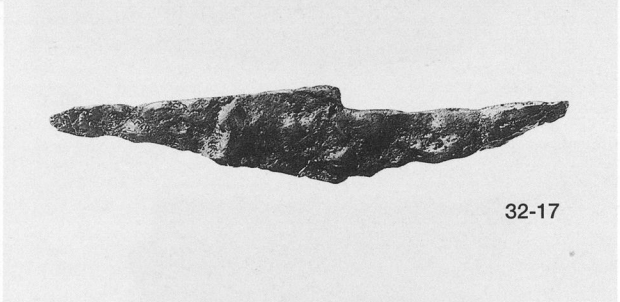
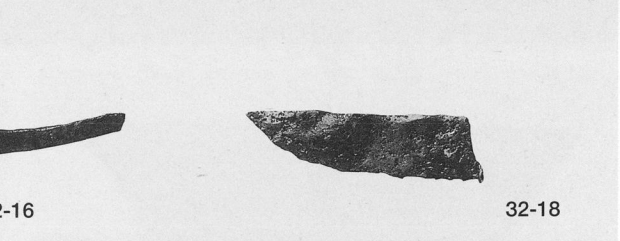
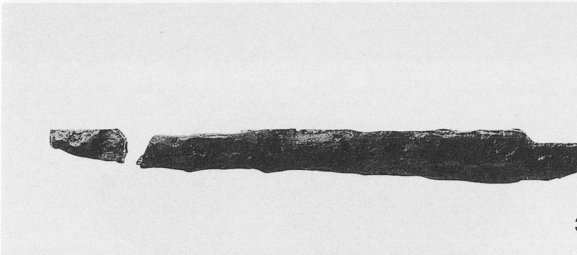
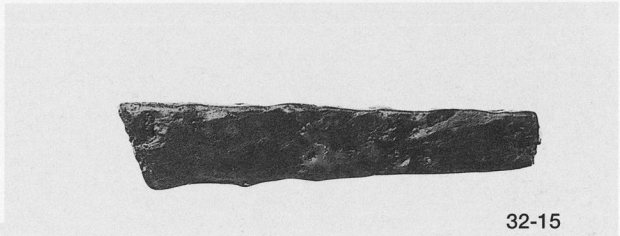
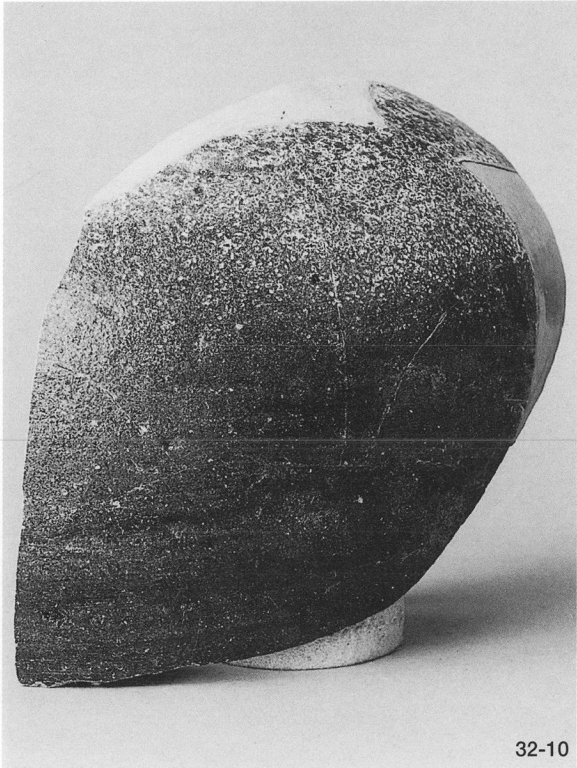
第32号住居跡・出土遺物

PL46



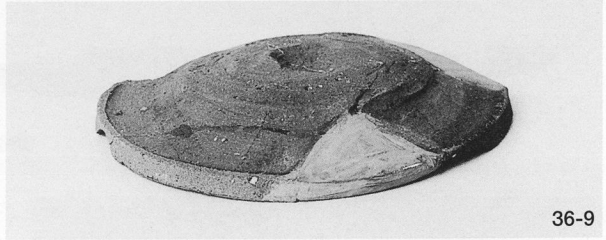
第32号住居跡遺物出土状況・出土遺物



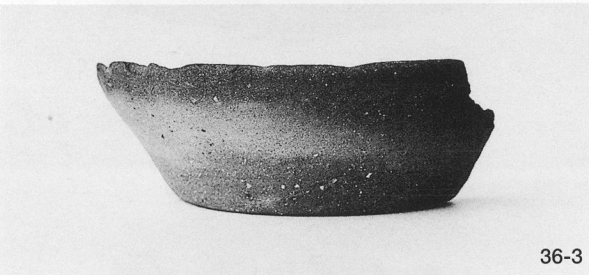




36-1



36-9



36-3



36-5



36-4



36-10





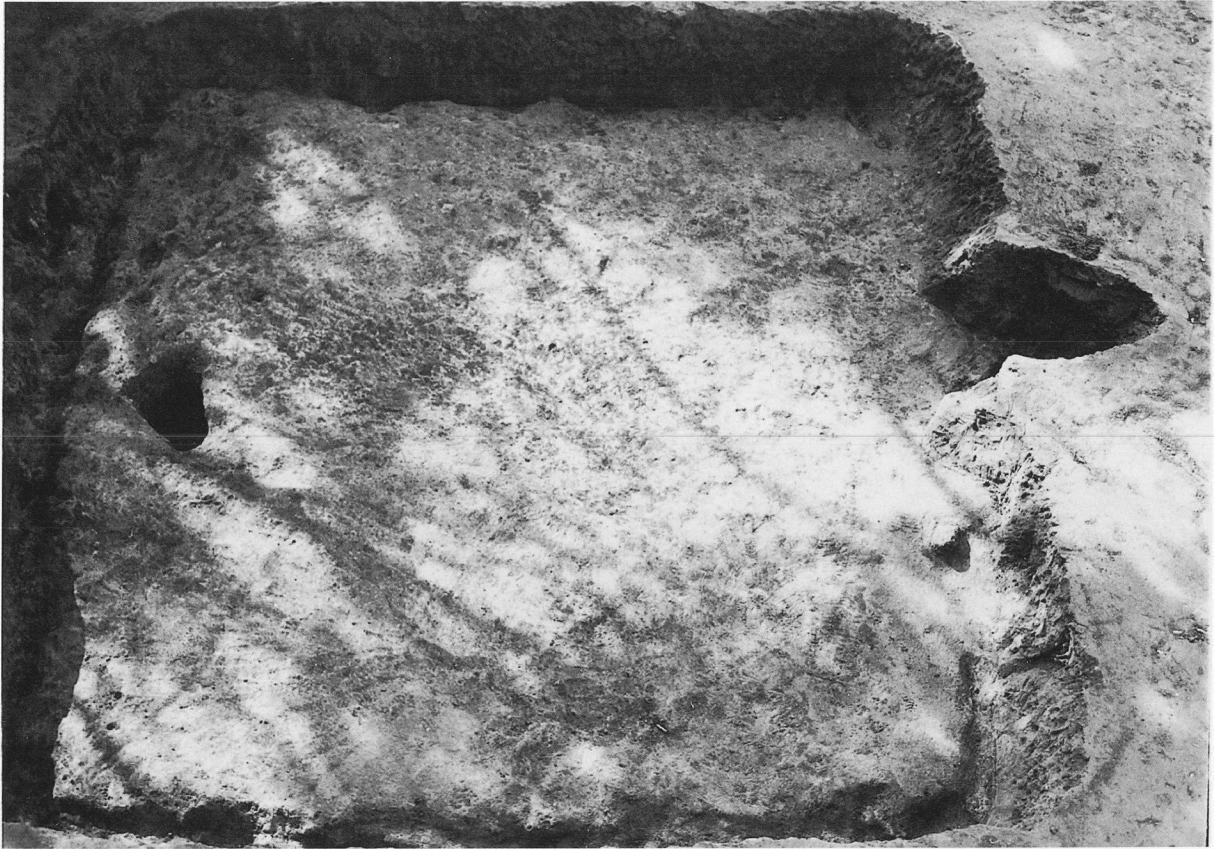
36-2



36-6



36-8



第38号住居跡・出土遺物





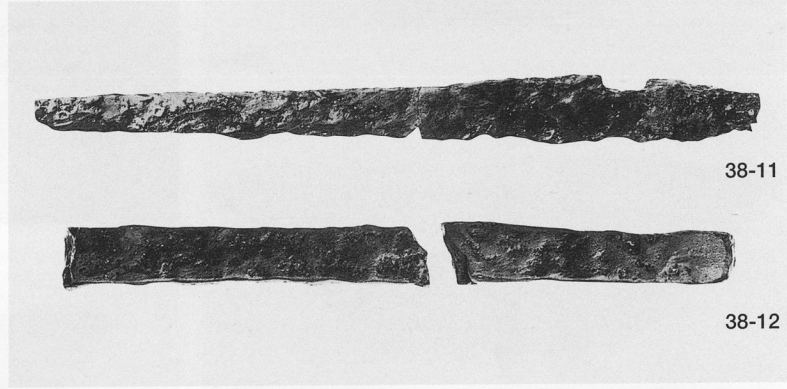
38-8



38-7



38-9



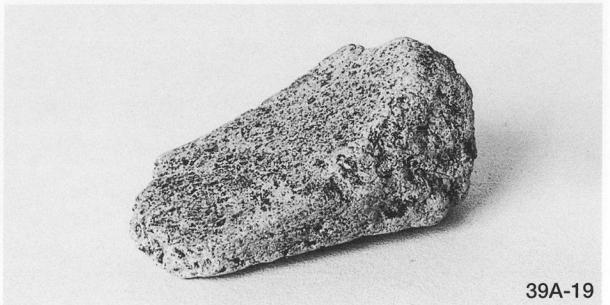
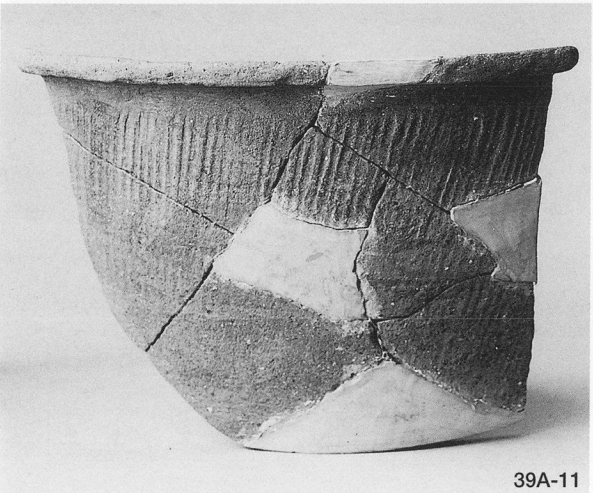
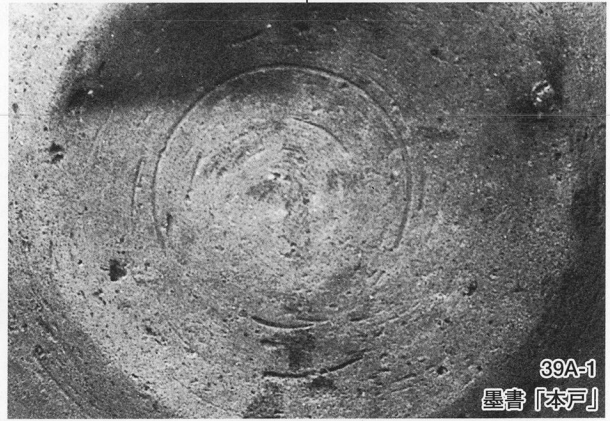
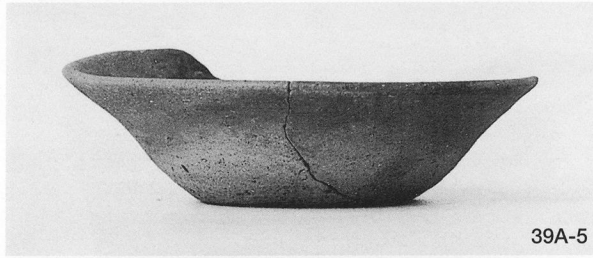
38-11

38-12



第38号住居跡出土遺物，第39A号住居跡

PL52



第39A号住居跡出土遺物



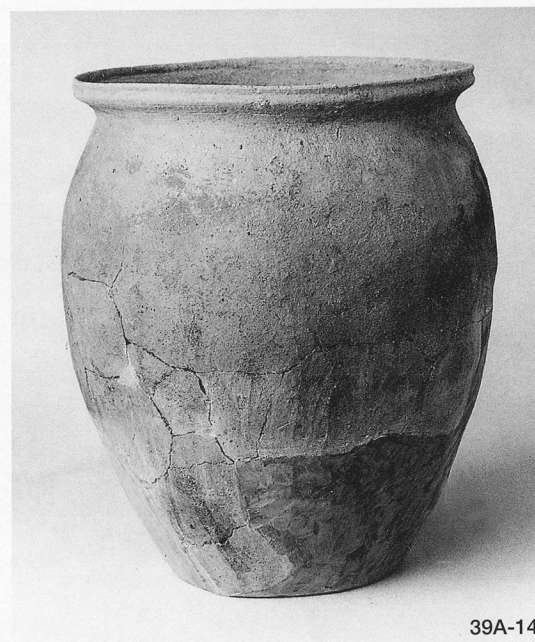
PL53



39A-17



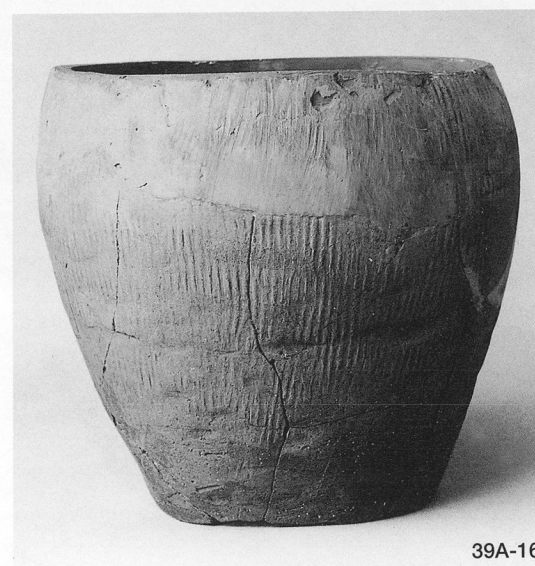
39A-12



39A-14

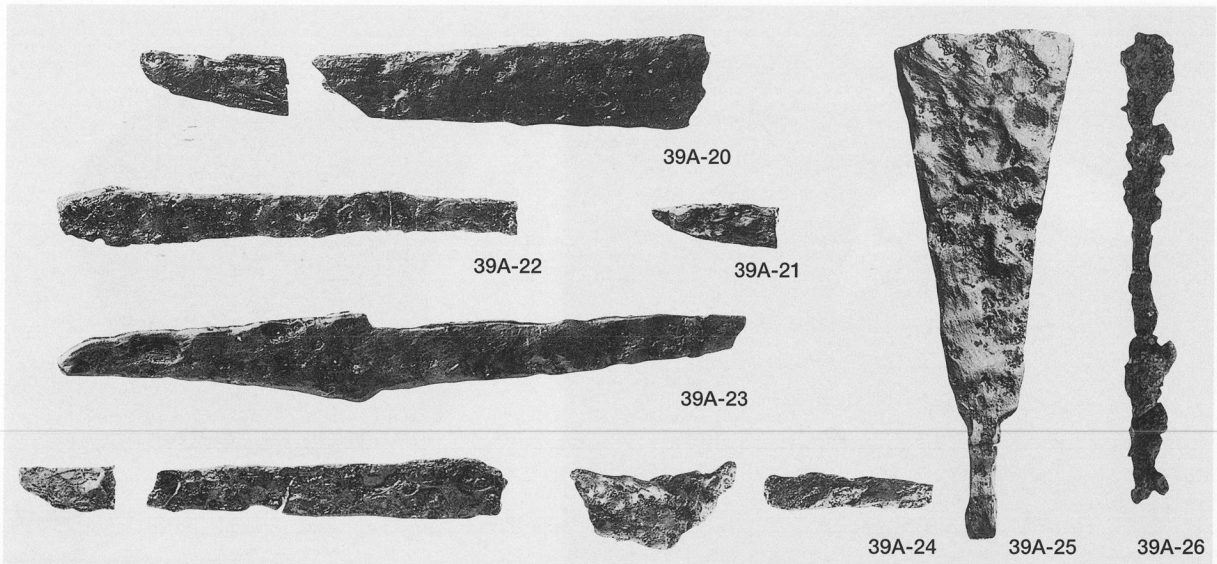


39A-13



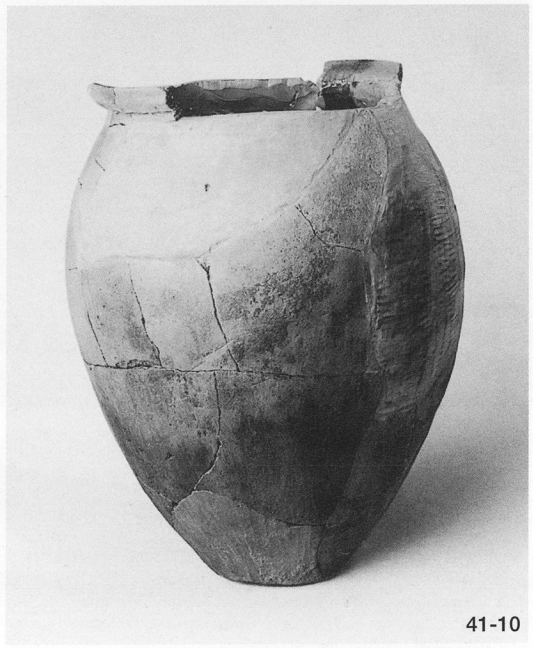
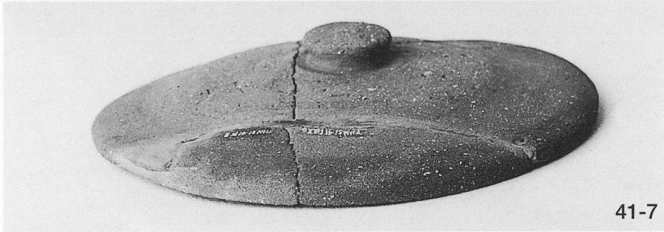
39A-16

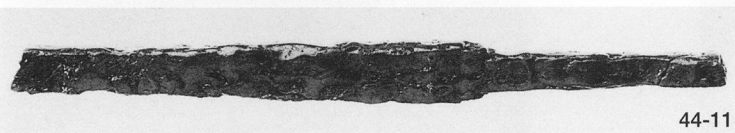
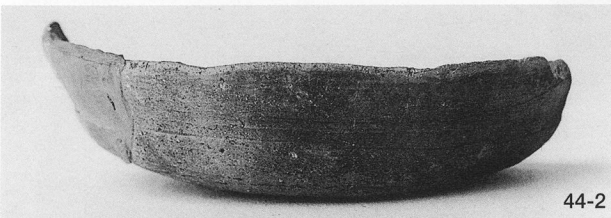
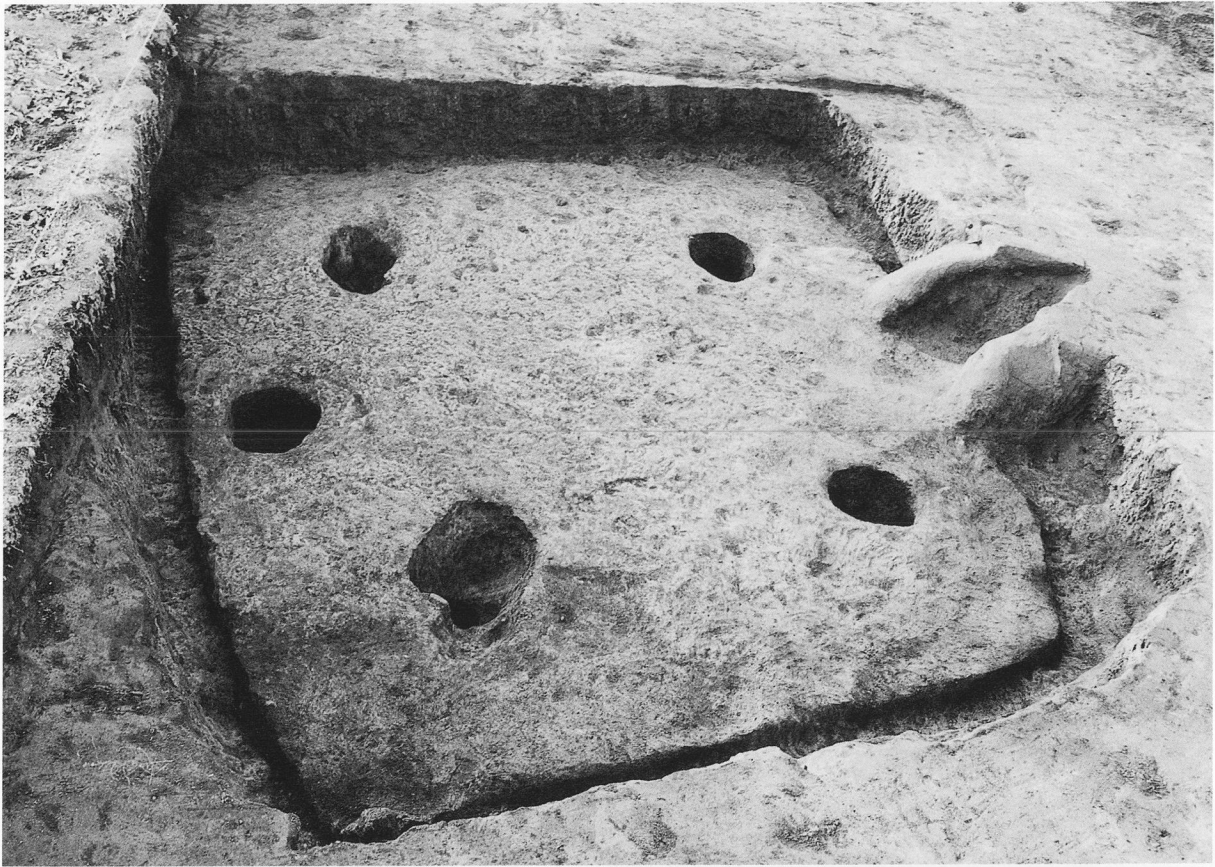
PL54



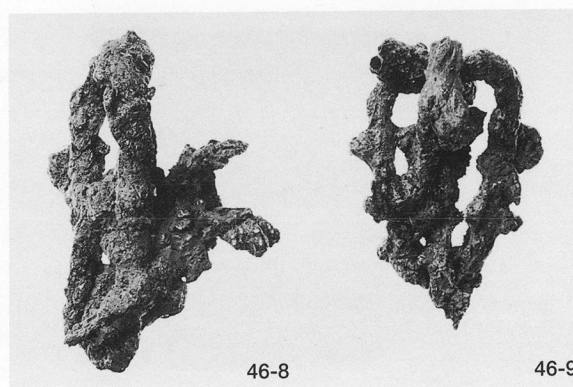
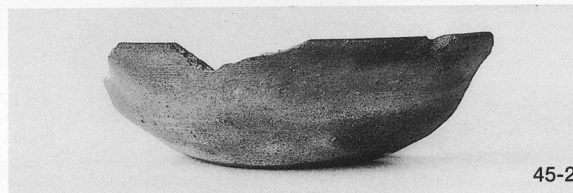
第39A号住居跡出土遺物，第41号住居跡・出土遺物













47-1



47-2



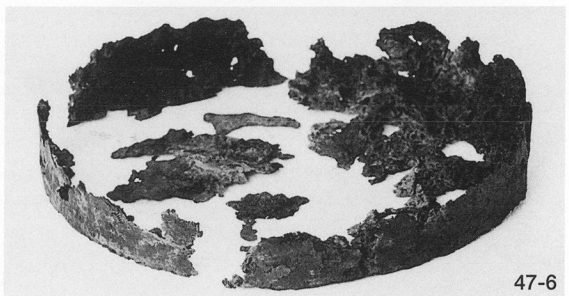
47-4



47-2  
墨書「前」

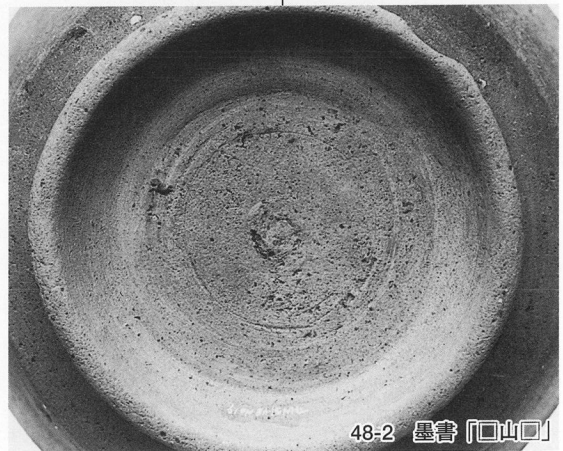


47-5

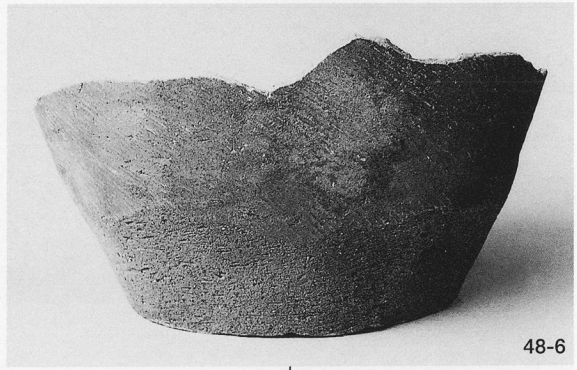
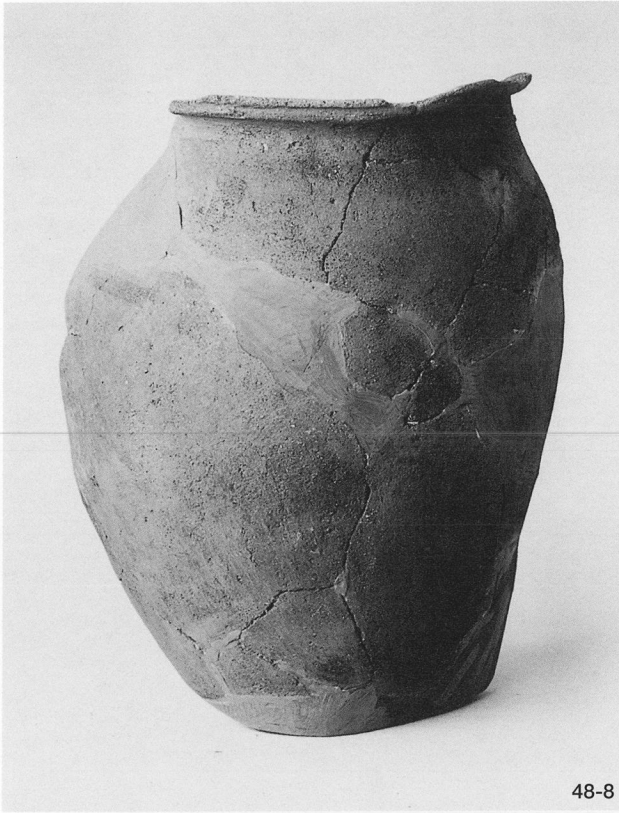


47-6

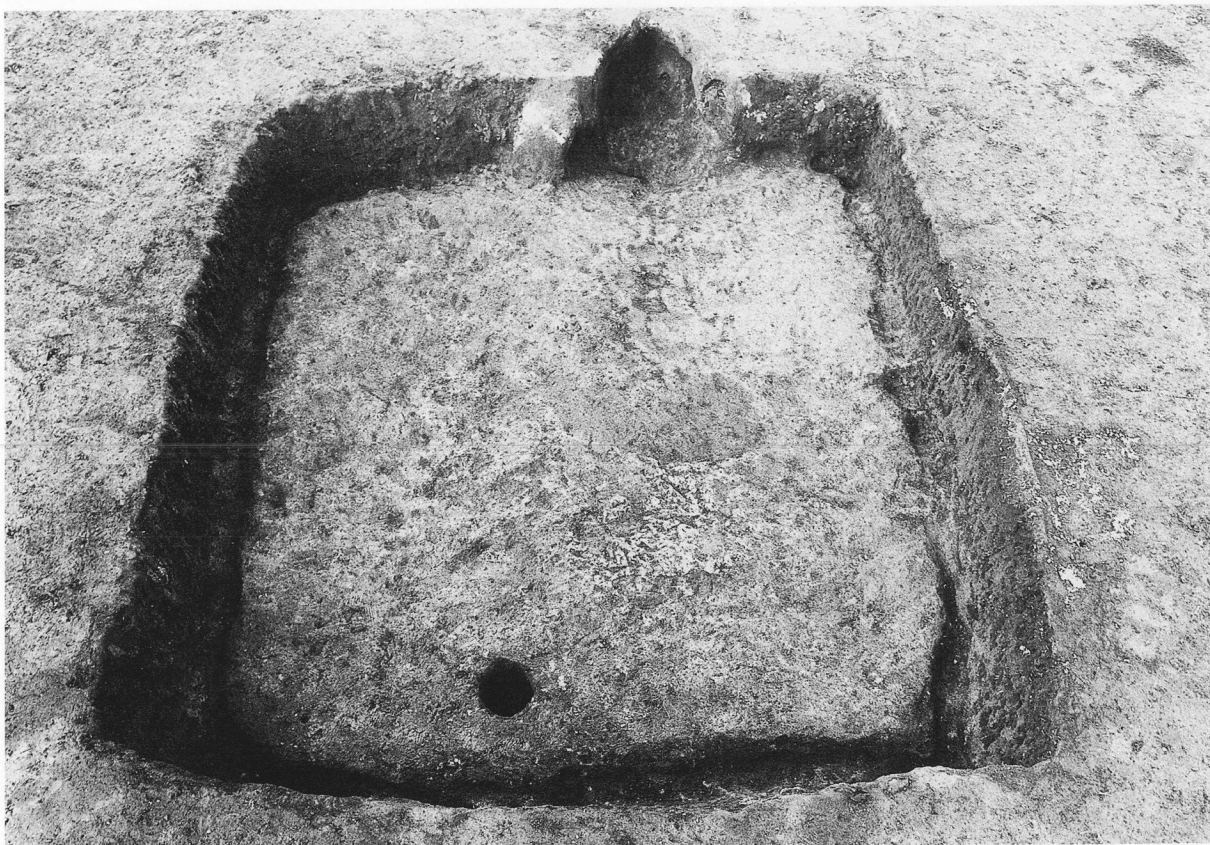




第48号住居跡・出土遺物







50-1



50-3



50-2

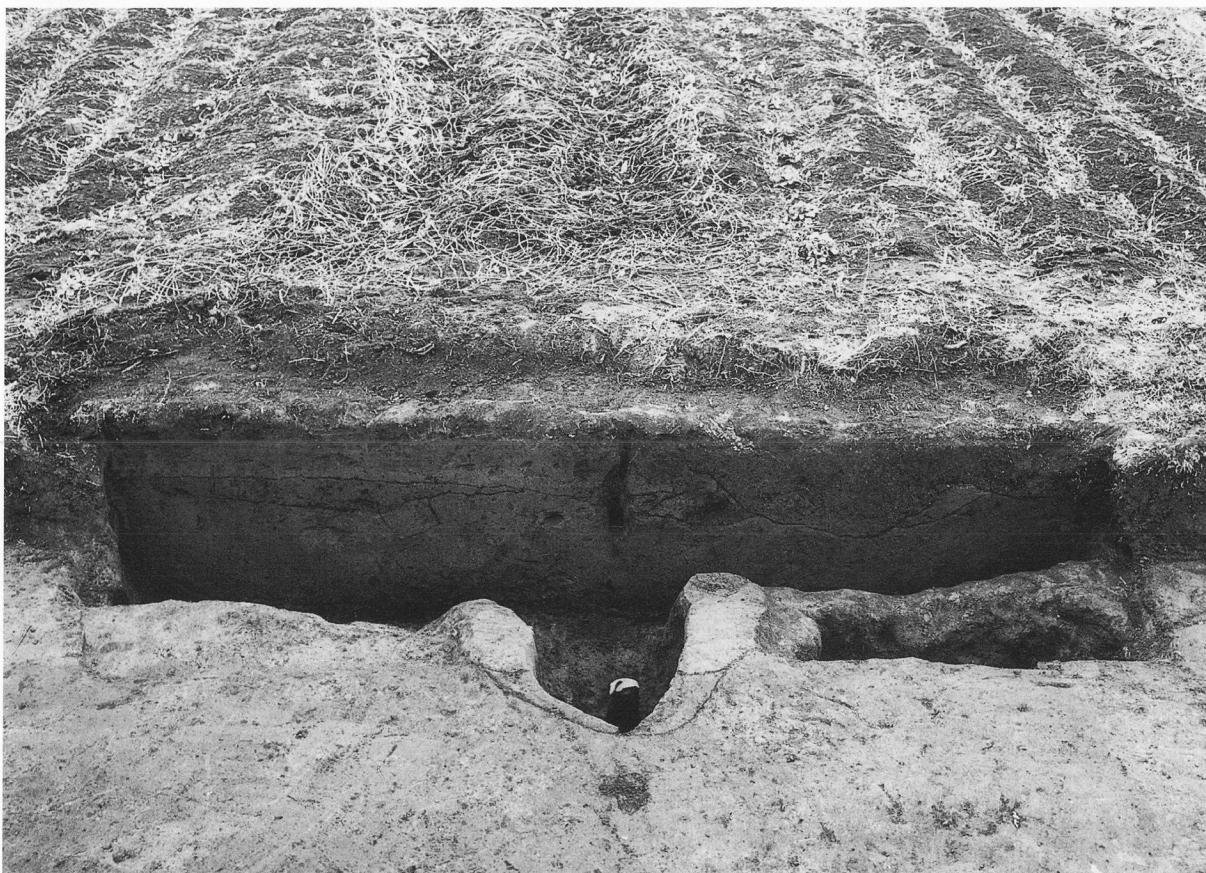


51-2



51-3

第50号住居跡・出土遺物，第51号住居跡出土遺物



53-1



53-3



53-2



53-4



53-7





第53号住居跡遺物出土状況，第54号住居跡

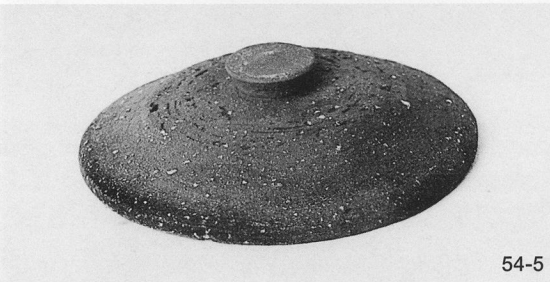
PL64



54-3



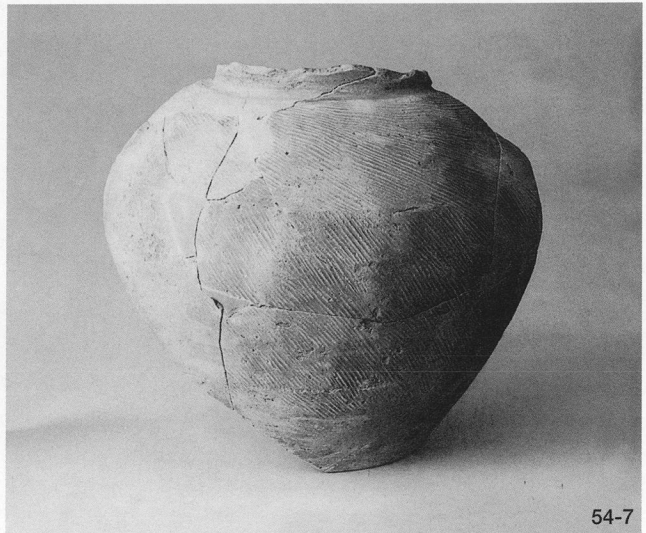
54-2



54-5



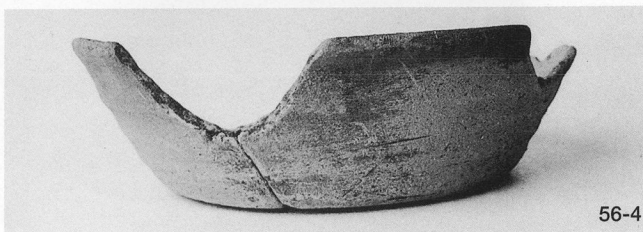
54-6



54-7

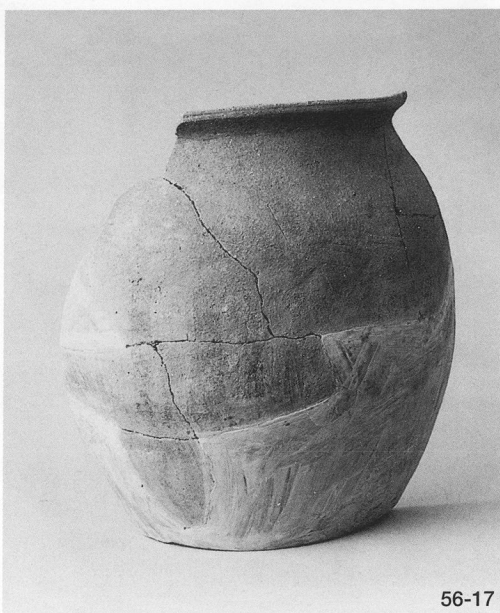
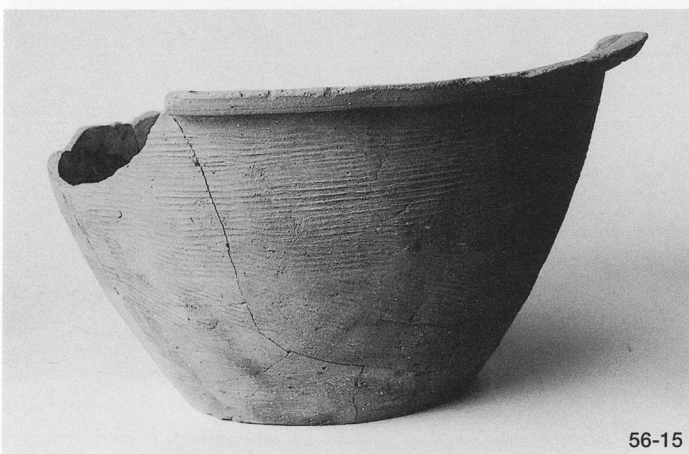
第54号住居跡遺物出土状況・出土遺物





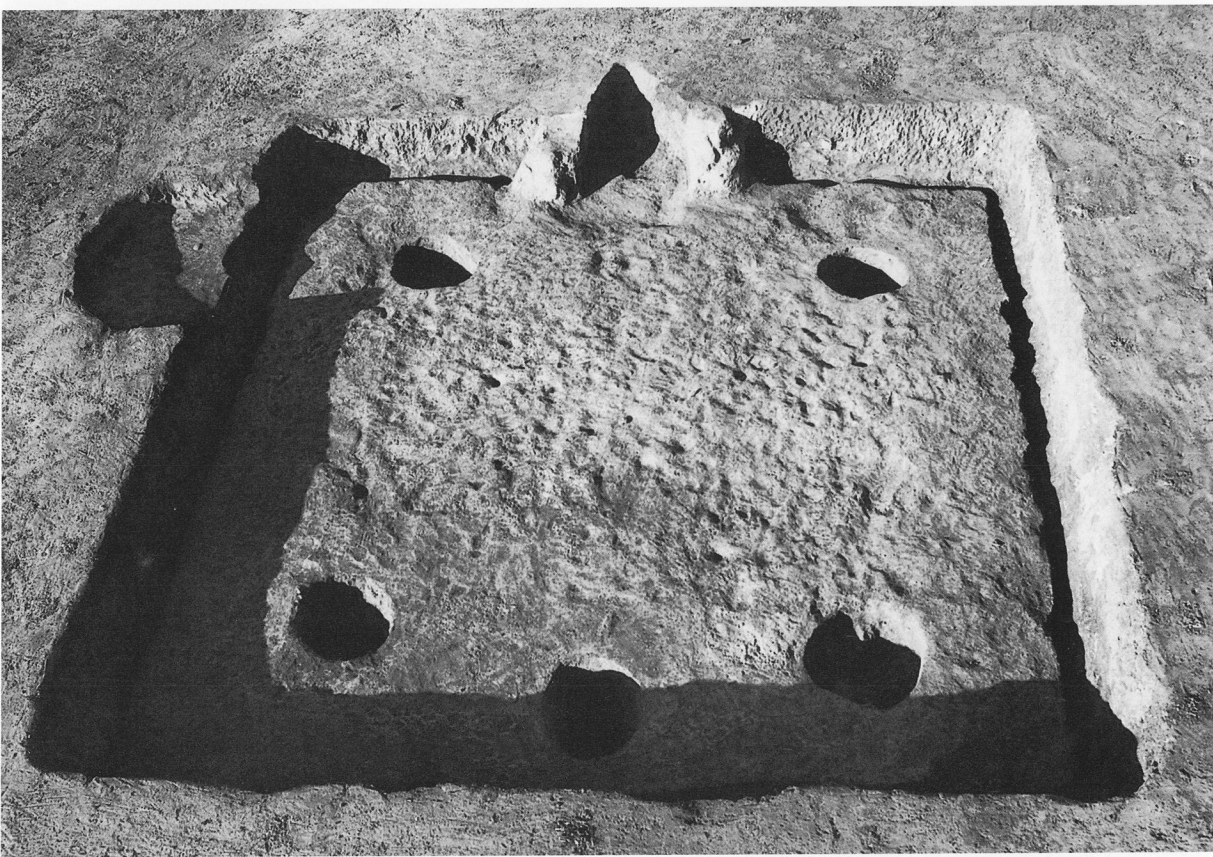
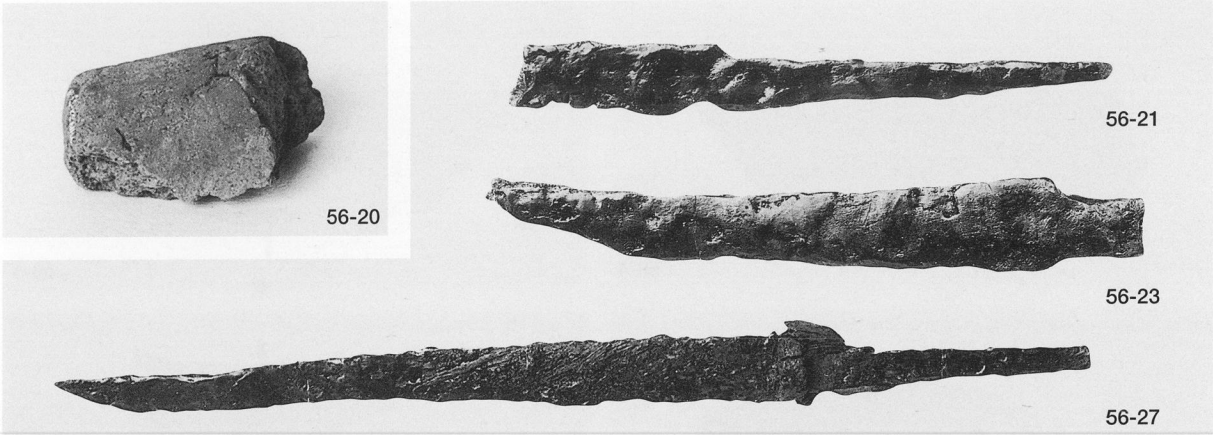
第56号住居跡・出土遺物

PL66



第56号住居跡出土遺物





第56号住居跡出土遺物，第58号住居跡・出土遺物

PL68



58-4



58-5



58-8



58-13



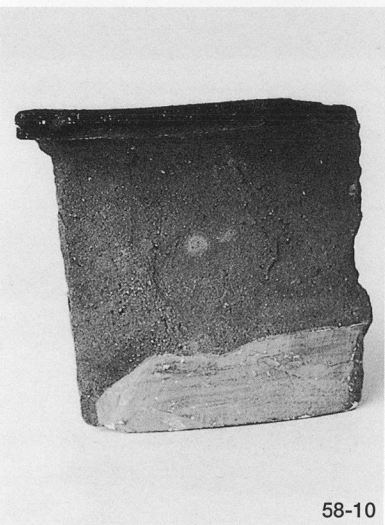
58-9



58-12



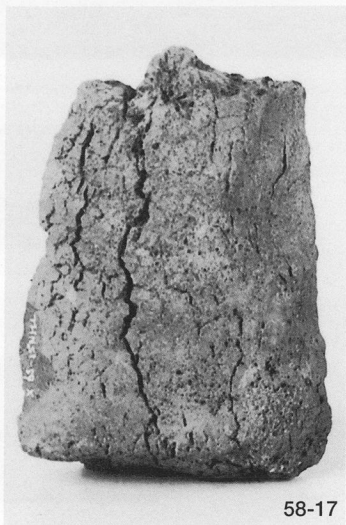
58-14



58-10

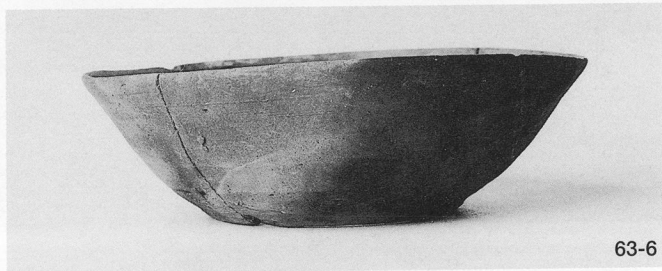
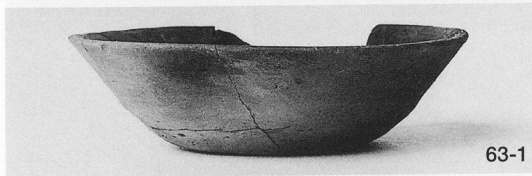
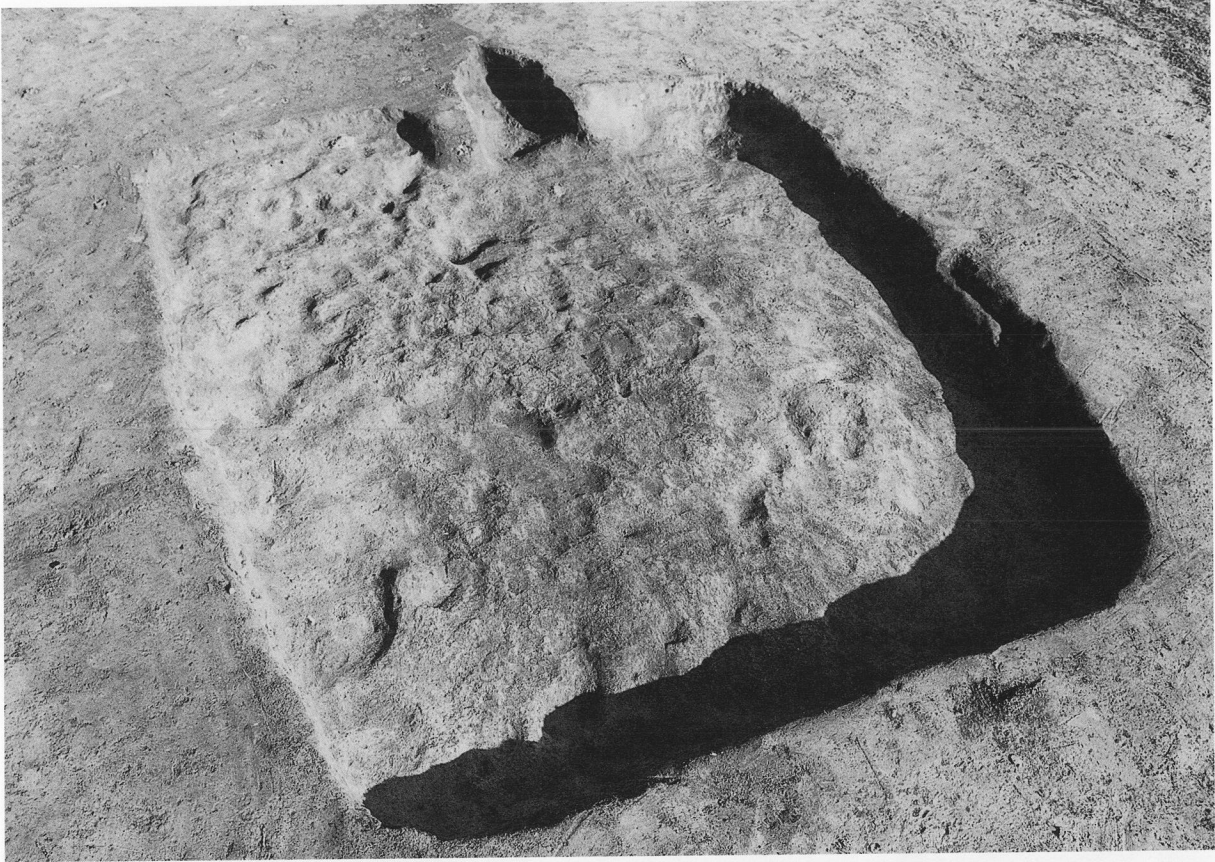


58-15



58-17

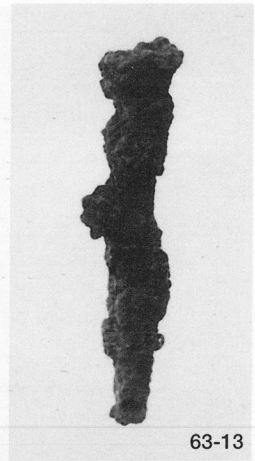




PL70



63-12



63-13



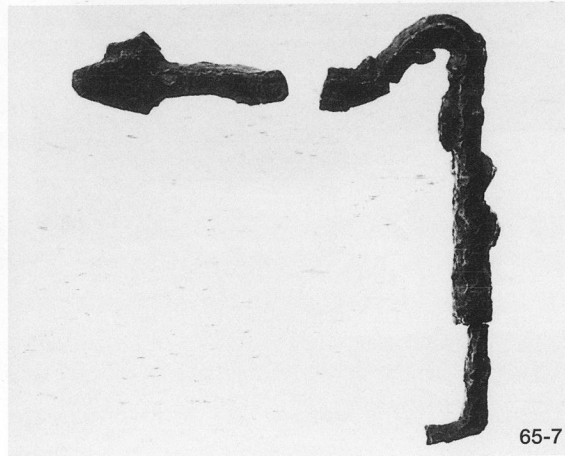
64-1



64-3

第63号住居跡出土遺物，第64号住居跡・出土遺物





第65号住居跡・出土遺物

PL72



66-1



66-2



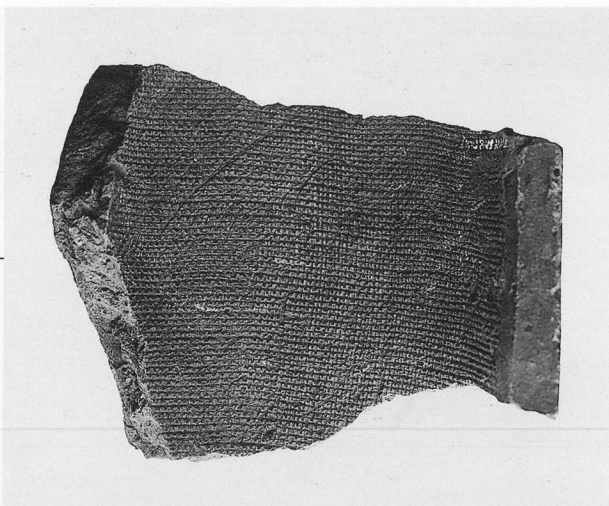


第67号住居跡・出土遺物

PL74



67-6



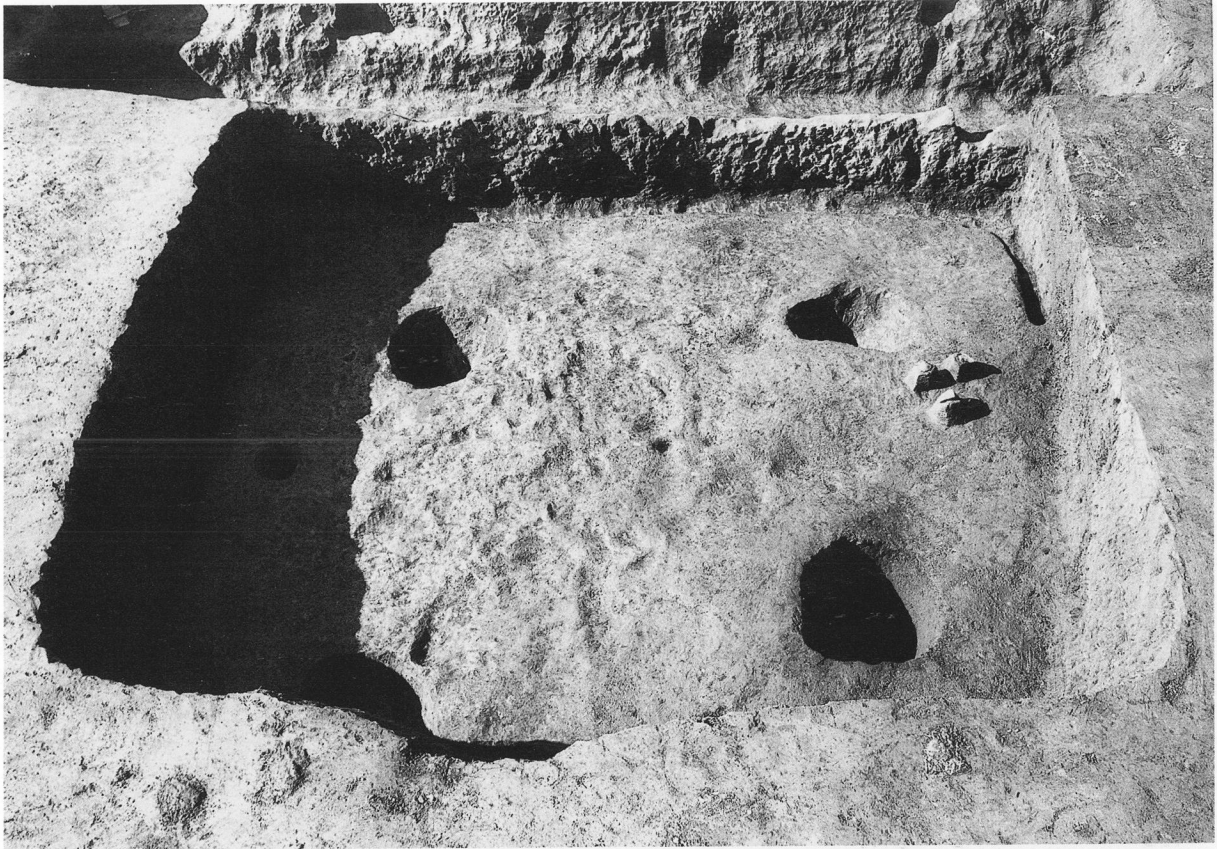
68-3



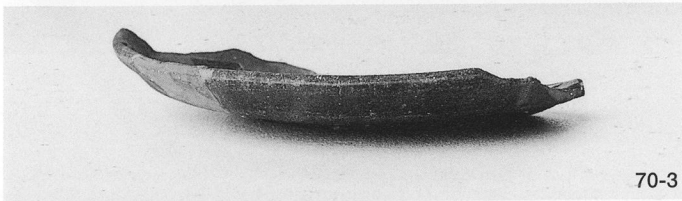
68-4

第67号住居跡出土遺物，第68号住居跡・出土遺物





70-2



70-3



70-5

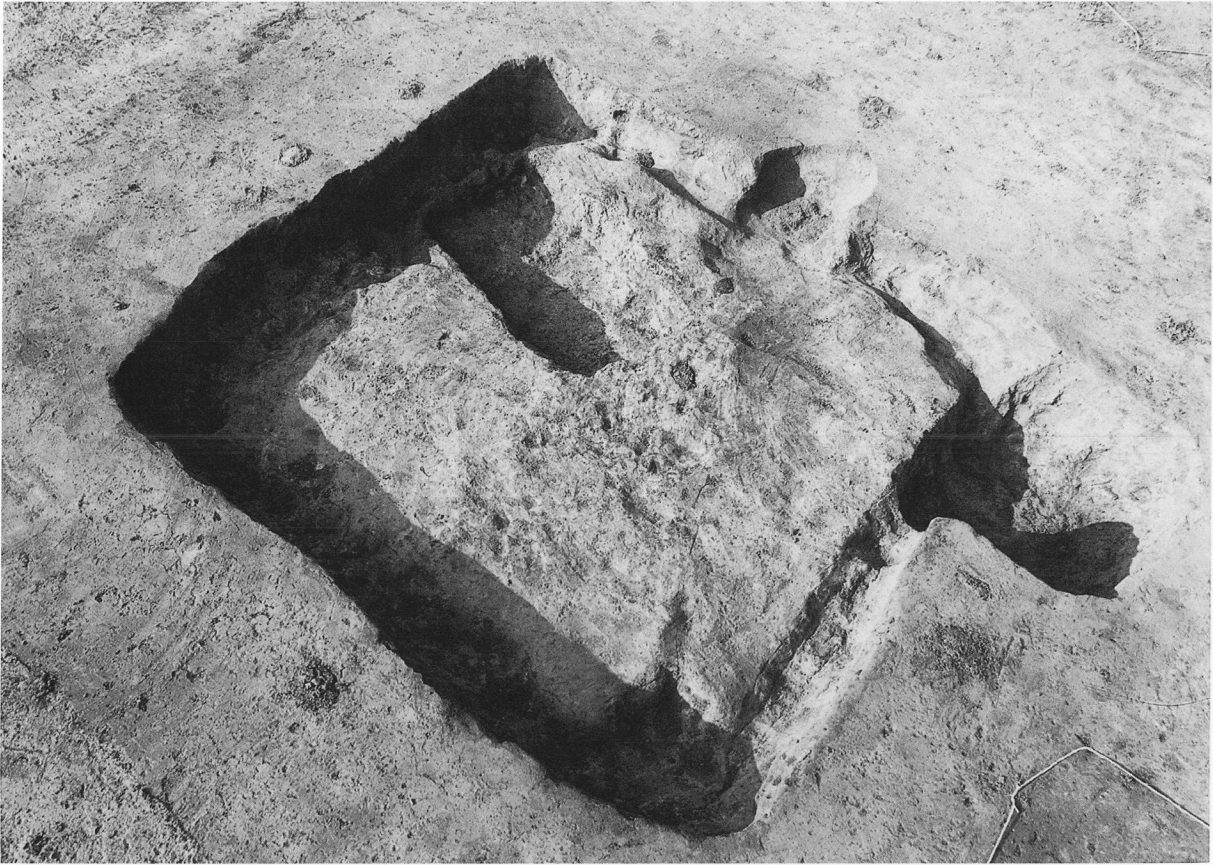


70-4

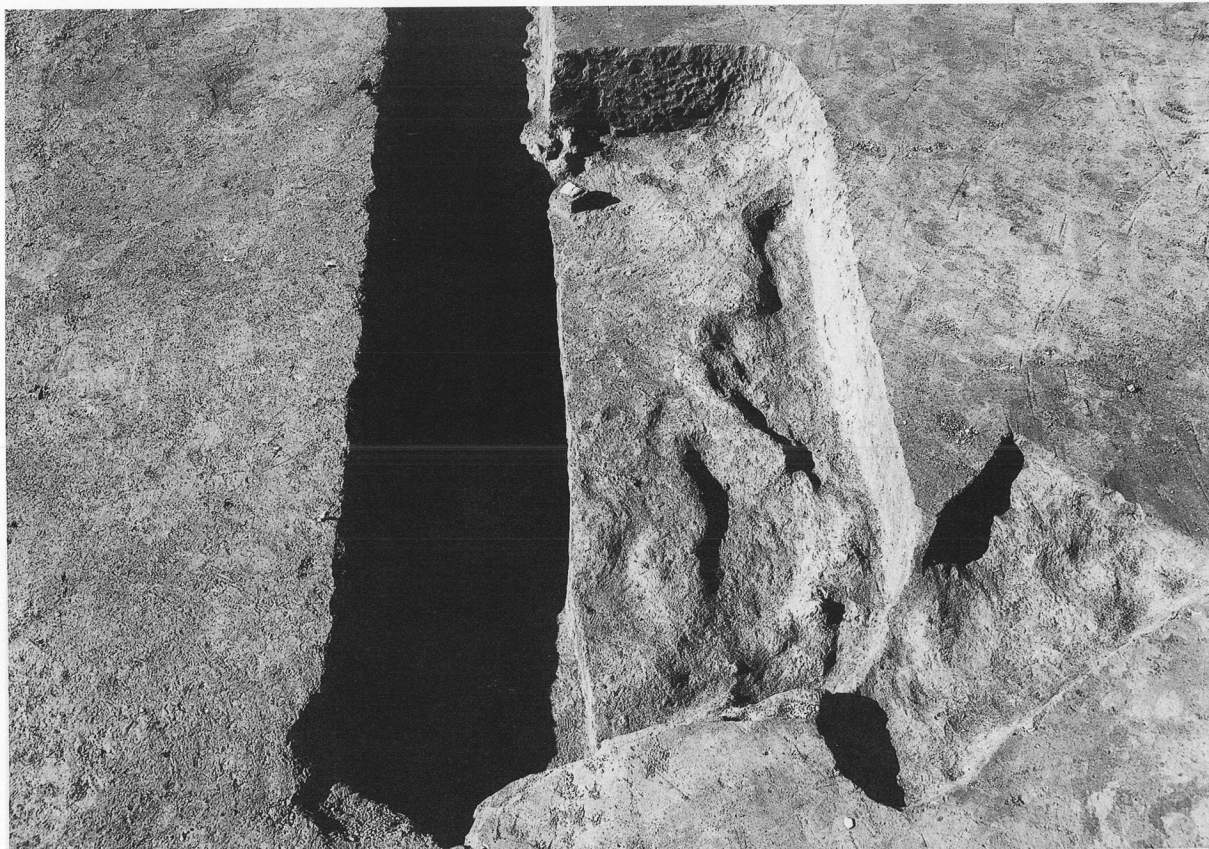


70-6

PL76

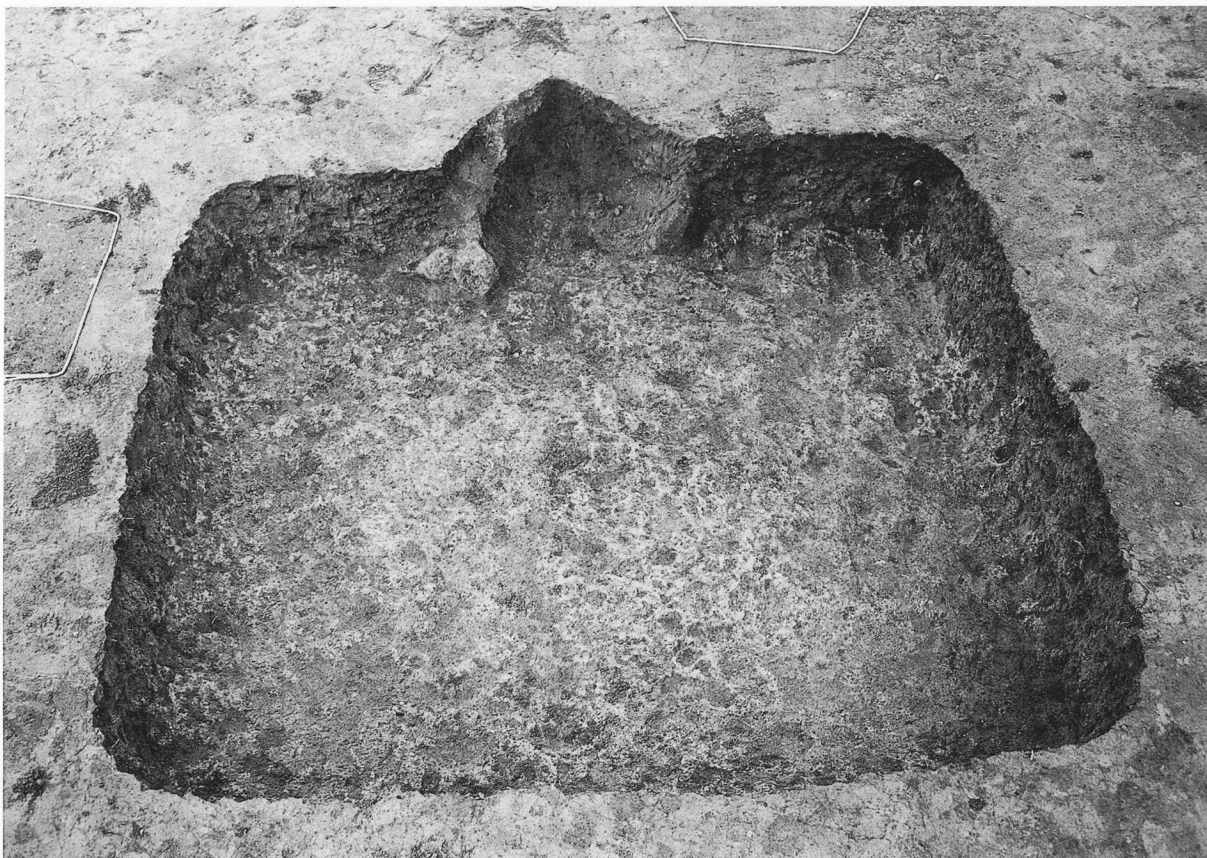






第72号住居跡・出土遺物

PL78



第73・74号住居跡

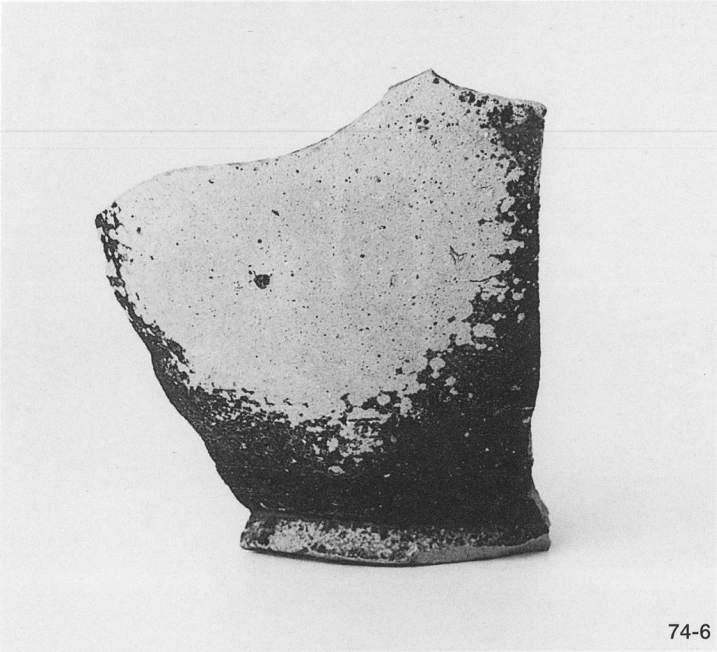




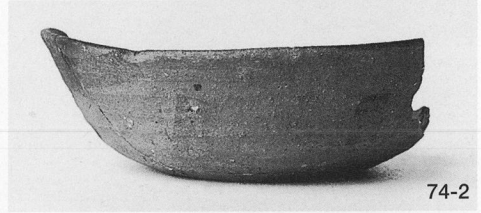
74-1



74-3 墨書「万坏」



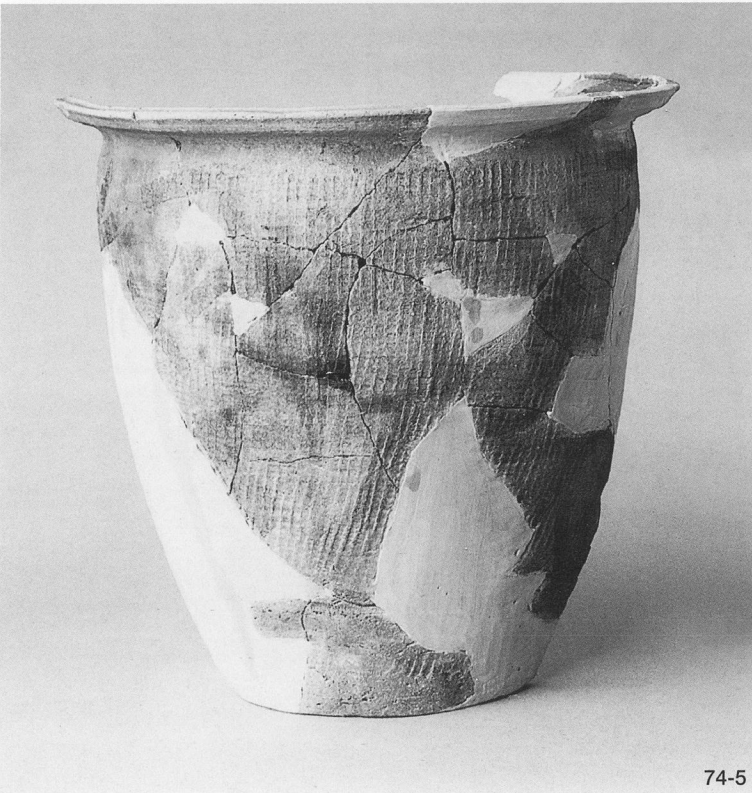
74-6



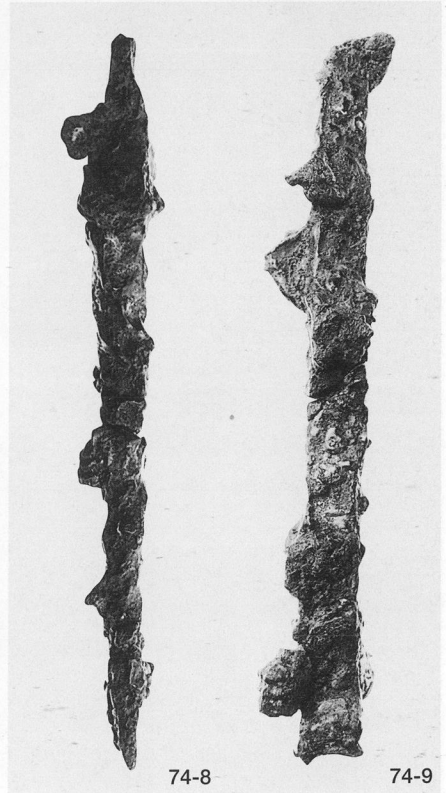
74-2



74-4 墨書「口不」



74-5



74-8

74-9

PL80



第75·76号住居跡



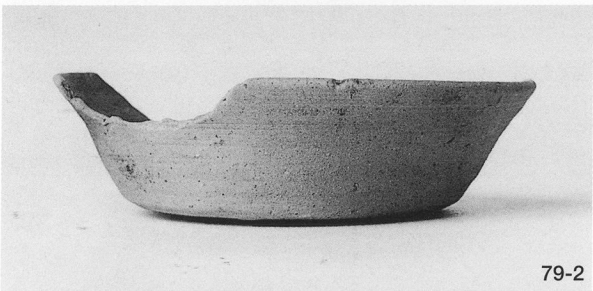




79-1



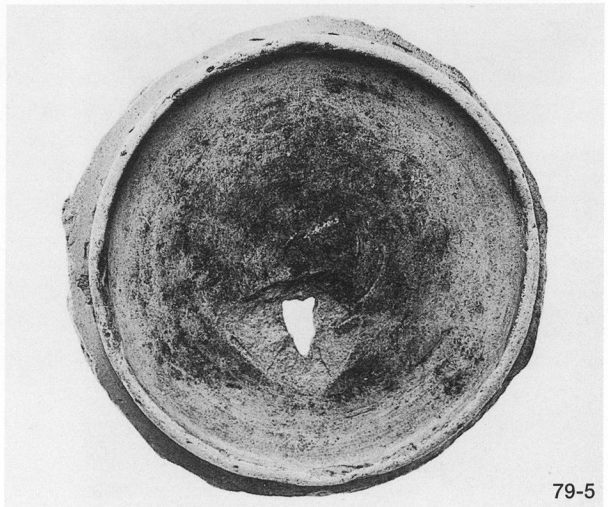
79-6



79-2

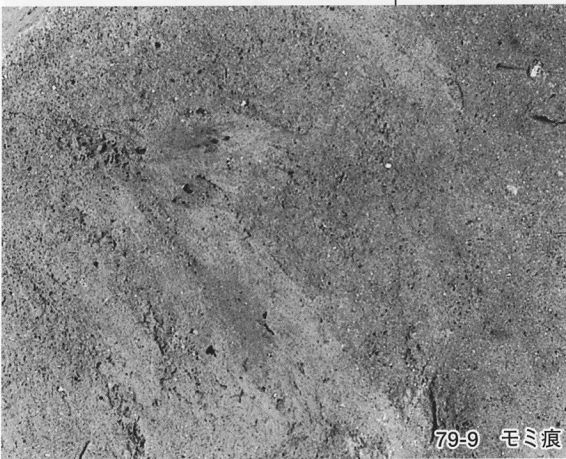


79-3

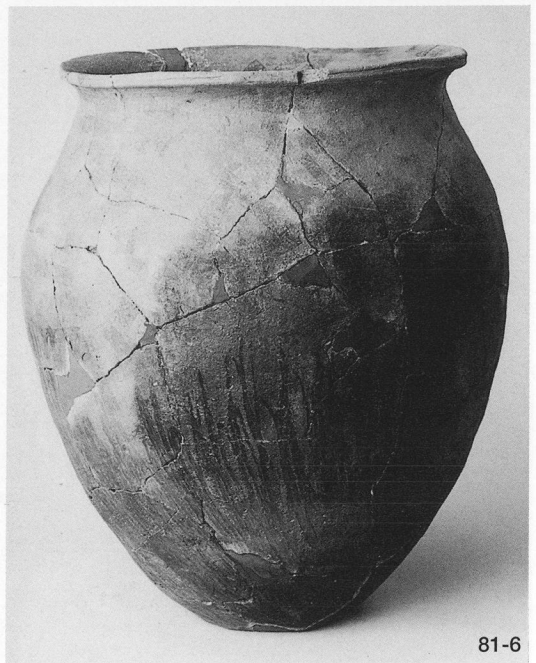
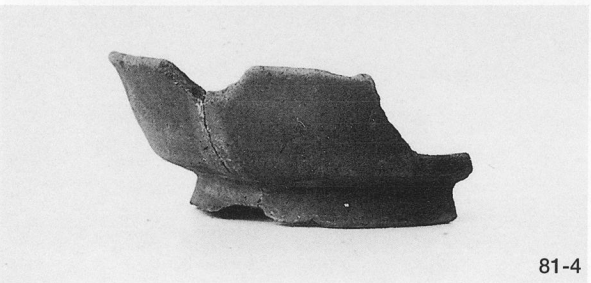
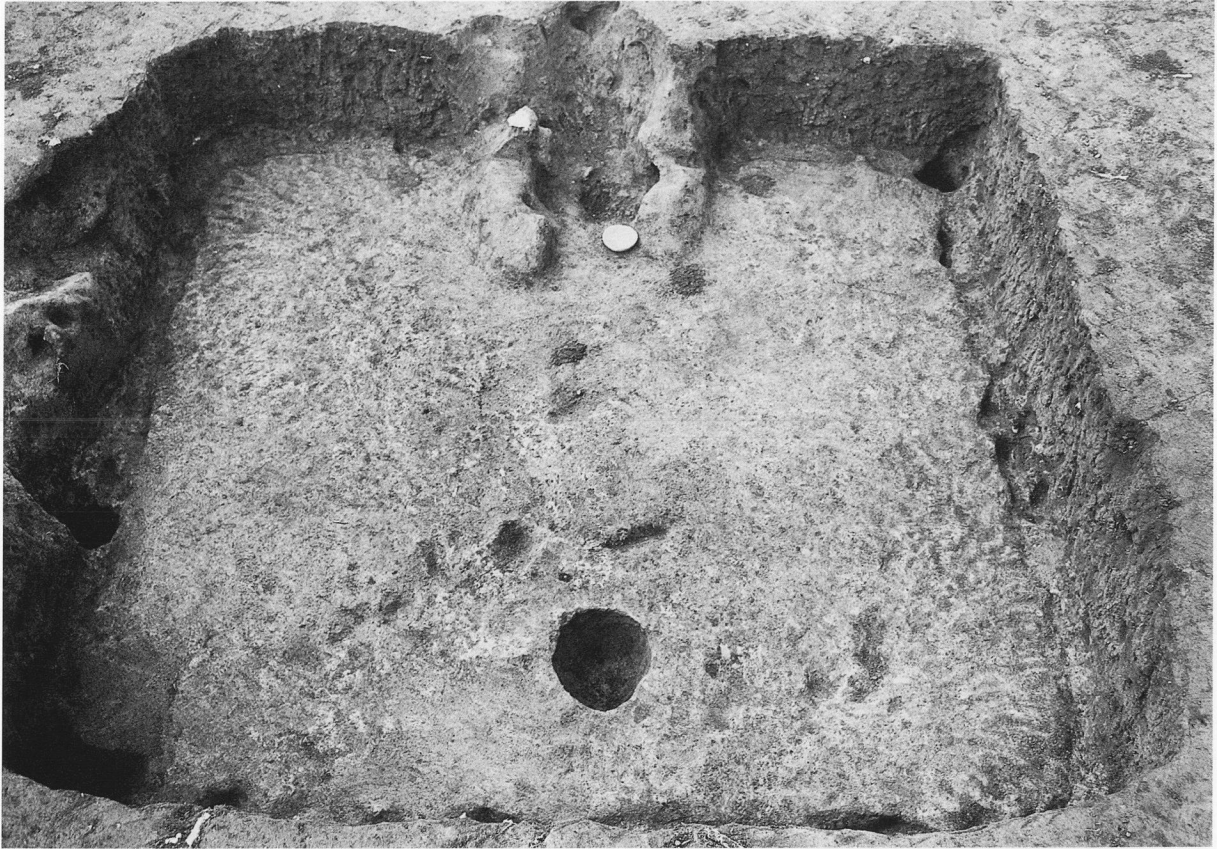


79-5



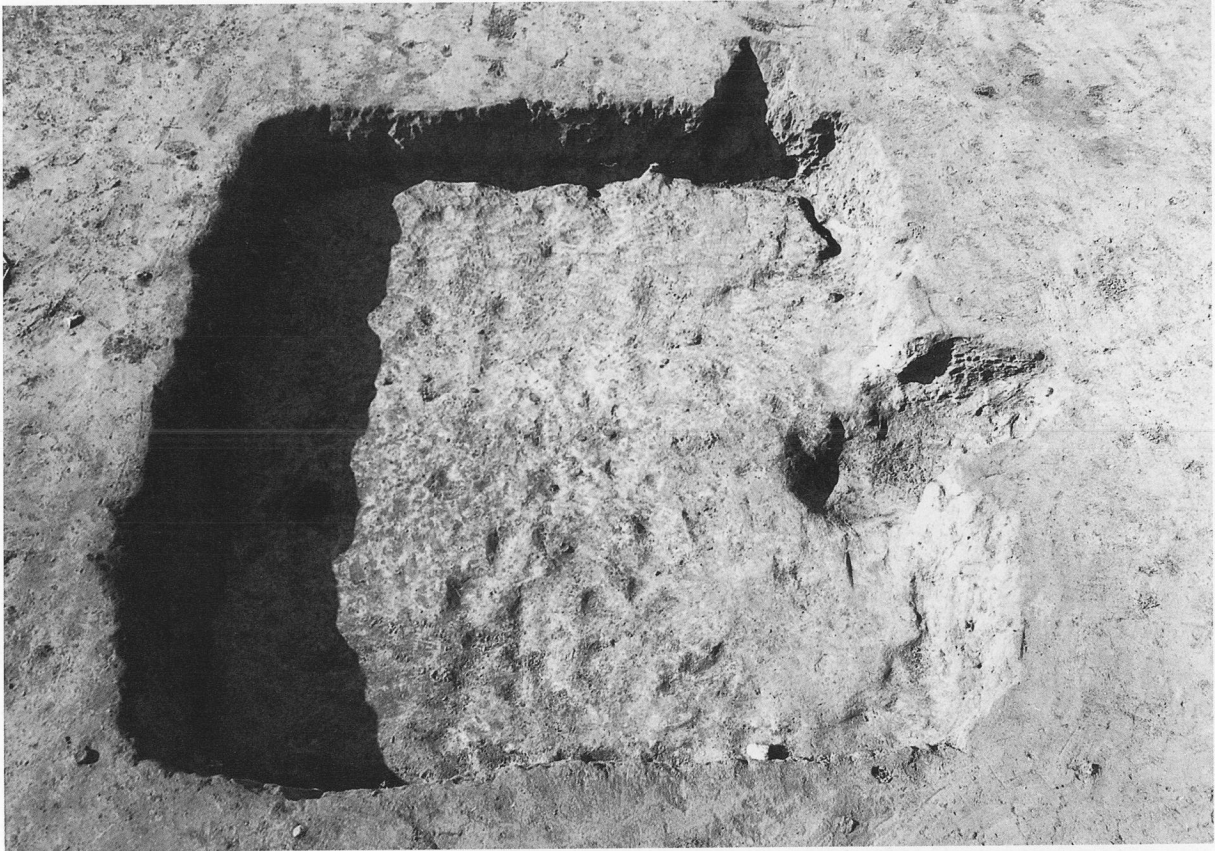


PL84

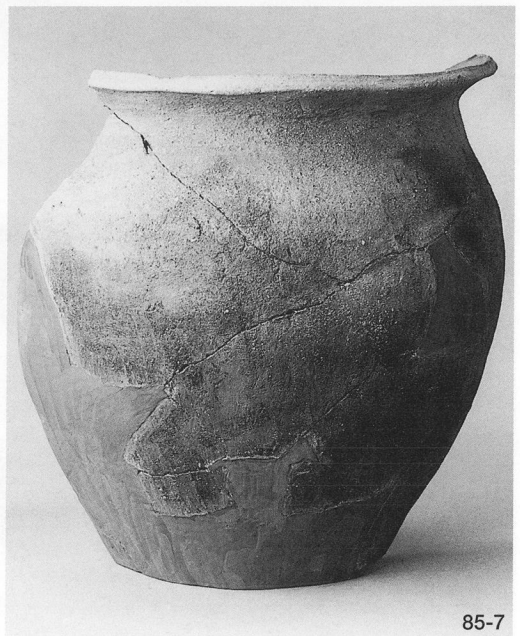


第81号住居跡・出土遺物



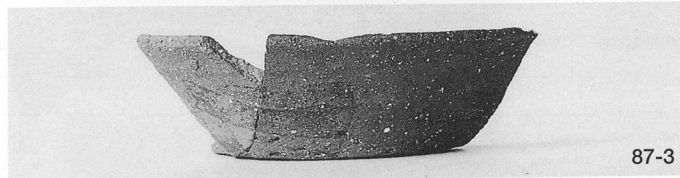
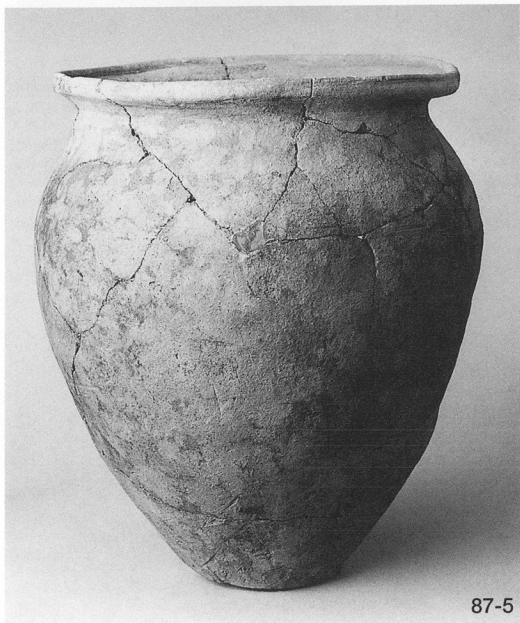


第82号住居跡・出土遺物

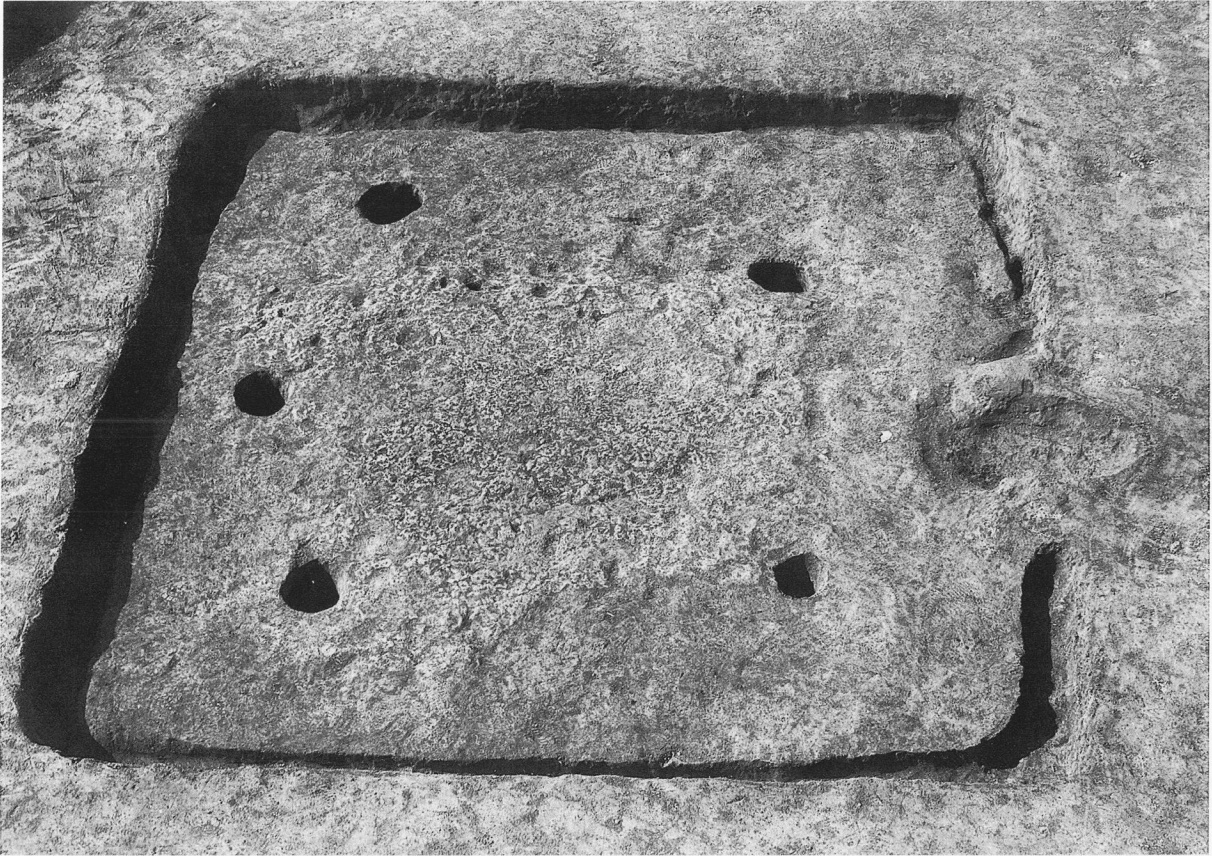


第84 A 号住居跡出土遺物，第85号住居跡・出土遺物

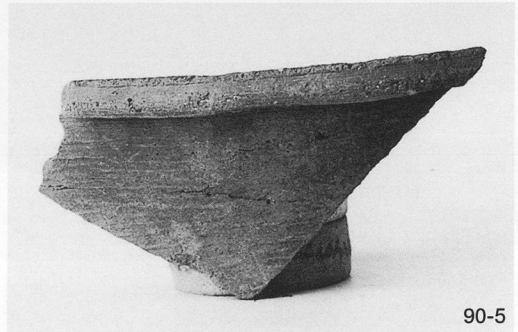




第86号住居跡出土遺物，第87号住居跡・出土遺物



90-1



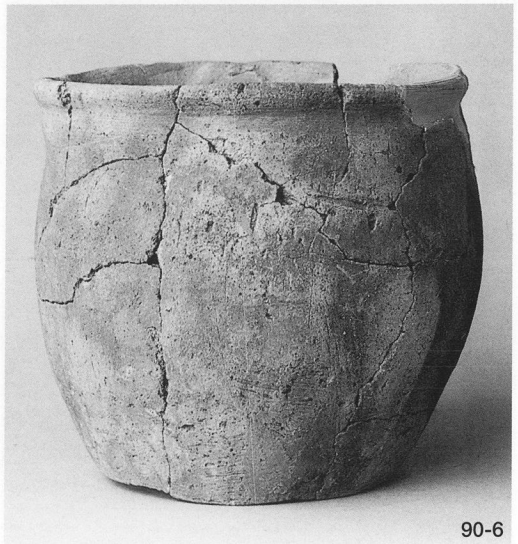
90-5



90-2



90-4



90-6

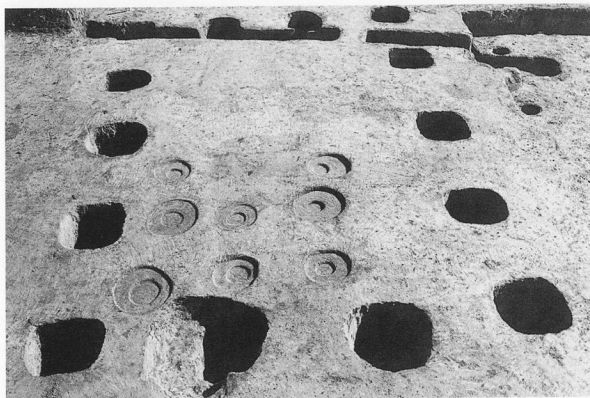




第1号掘立柱建物跡



第2号掘立柱建物跡



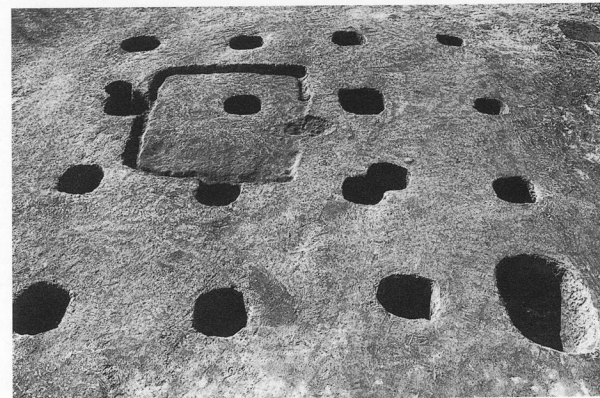
第3号掘立柱建物跡, 第8号掘立柱建物跡柱痕確認状況



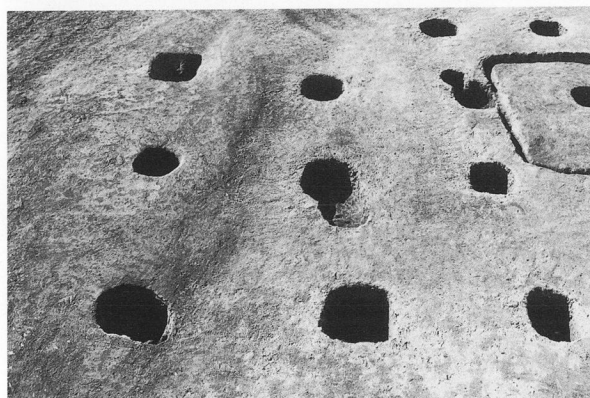
第4 A・4 B号掘立柱建物跡柱痕確認状況



第5号掘立柱建物跡



第6号掘立柱建物跡



第7号掘立柱建物跡

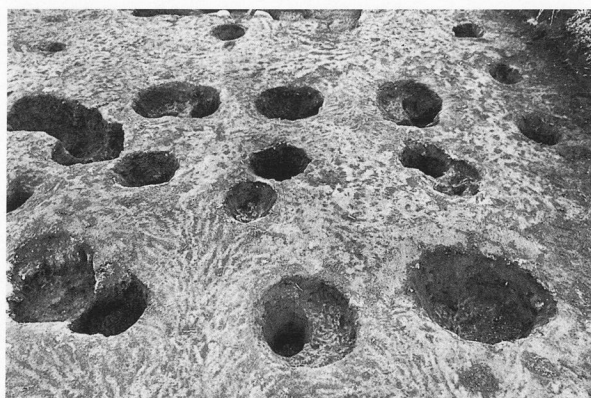


第9号掘立柱建物跡

PL90



第12号掘立柱建物跡, 周辺の土坑群



第13号掘立柱建物跡



第15号掘立柱建物跡



第17~19号掘立柱建物跡



第22・23号掘立柱建物跡



第24・25号掘立柱建物跡



第26号掘立柱建物跡



第27・29号掘立柱建物跡





1-1



1-3



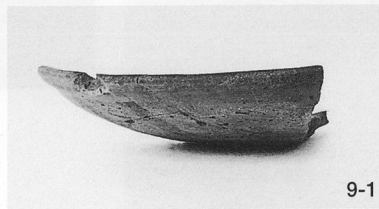
19-2



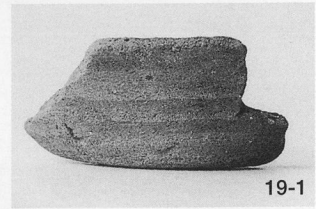
3-1



24-1



9-1



19-1



25-2



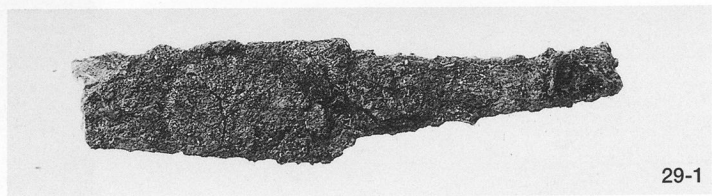
20-1



1-4

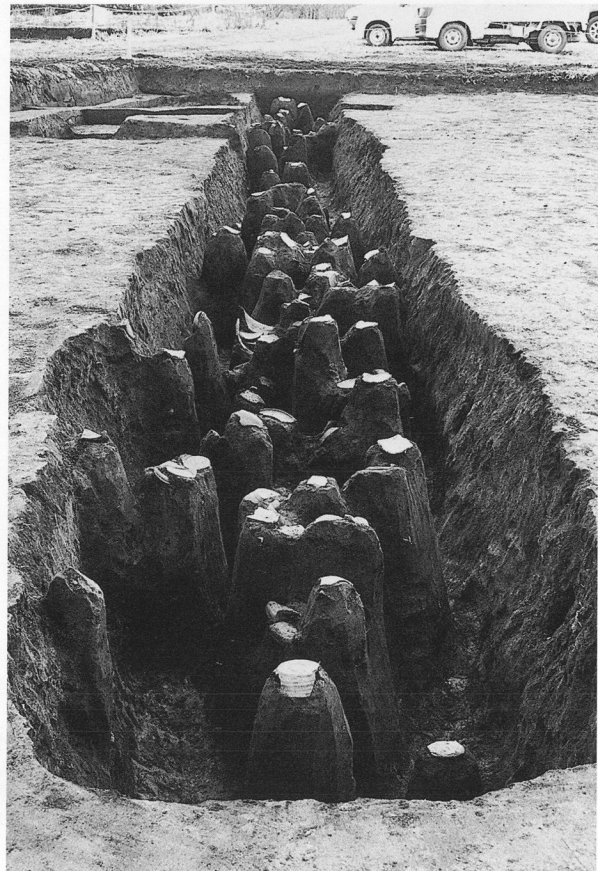
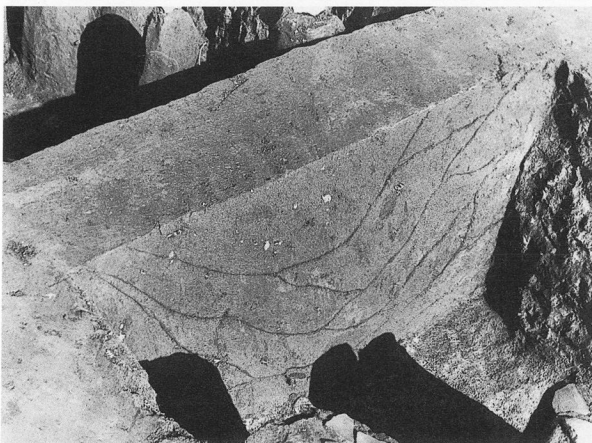
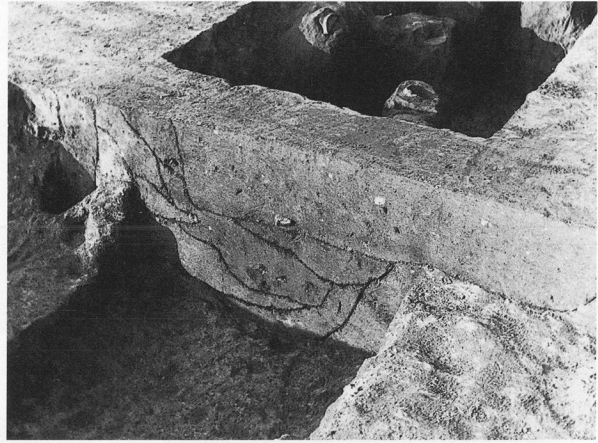


25-1



29-1

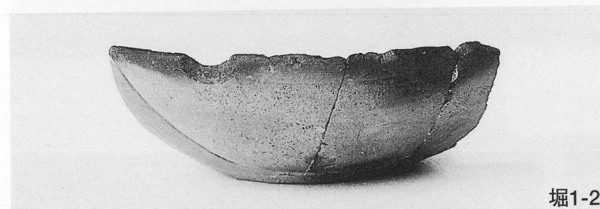
PL92



第1号堀・遺物出土状況・土層断面



PL93



第1号堀出土遺物(1)

(S) 株式会社「エフエム」

PL94



堀1-23



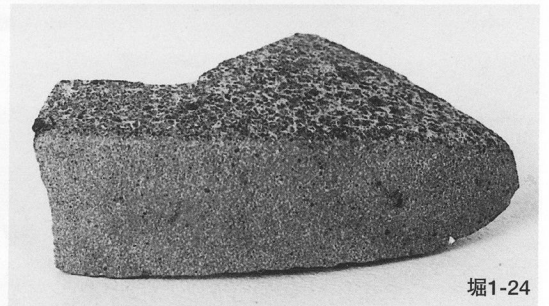
堀1-20



堀1-43



堀1-20 毛痕



堀1-24



堀1-46



堀1-44



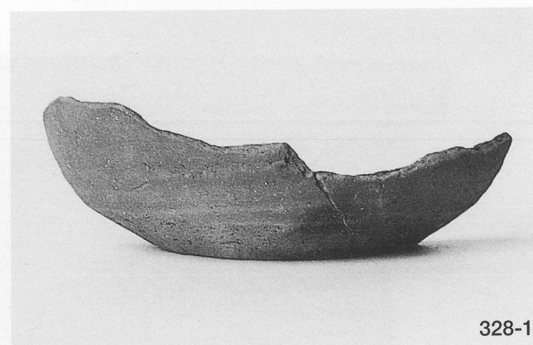
堀1-45



PL95



309-1



328-1



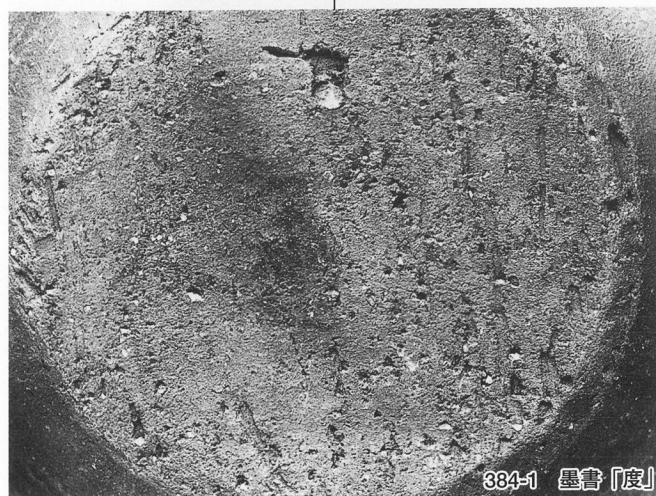
393-1



384-1



393-2



384-1 墨書「度」



386-1

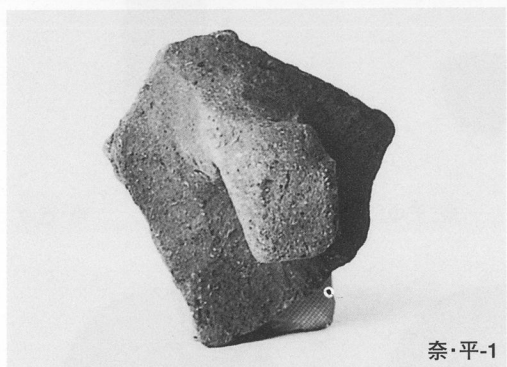






奈·平-4

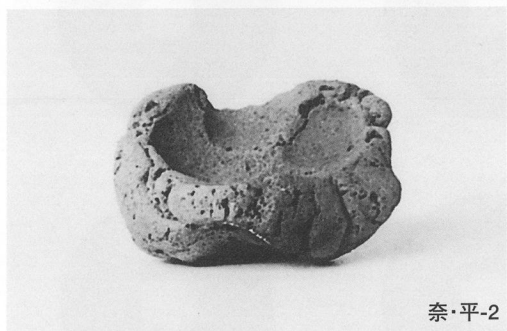
奈·平-6



奈·平-1



奈·平-5



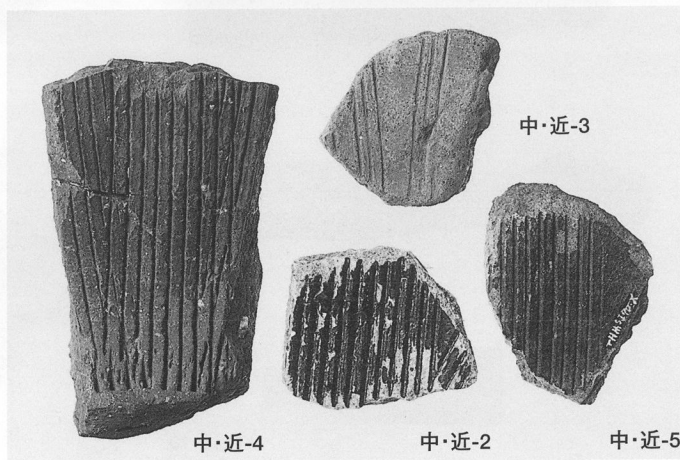
奈·平-2



奈·平-3



中·近-1

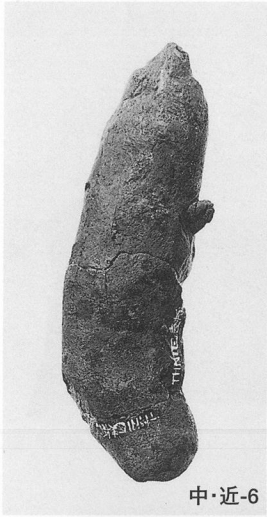


中·近-3

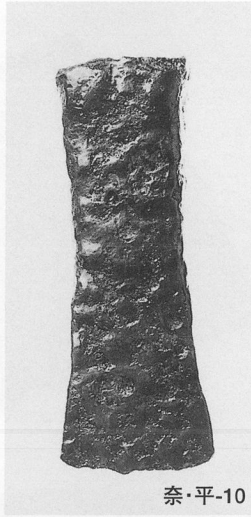
中·近-4

中·近-2

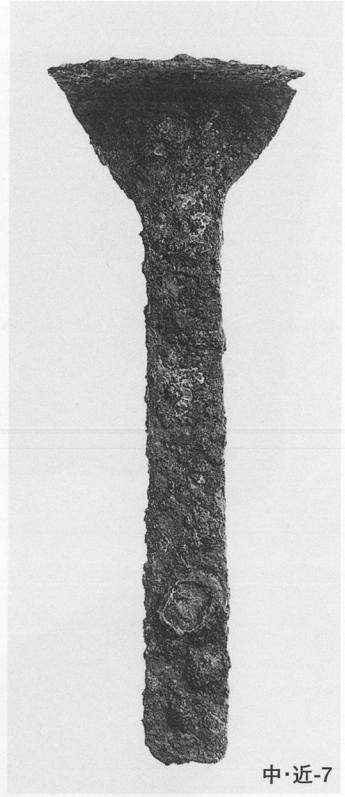
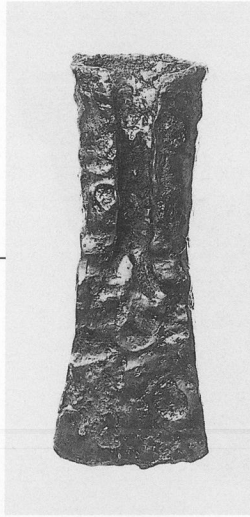
中·近-5



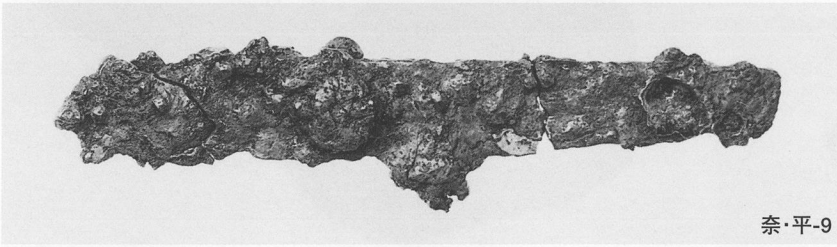
中・近-6



奈・平-10



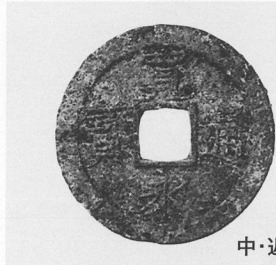
中・近-7



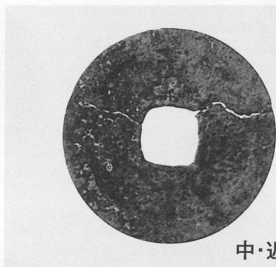
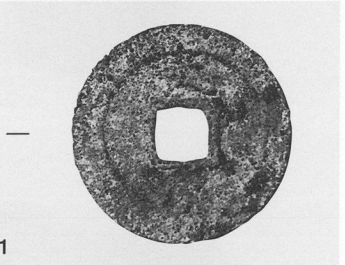
奈・平-9



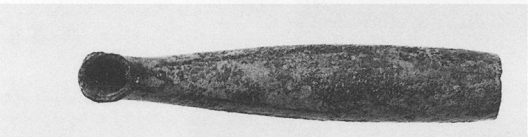
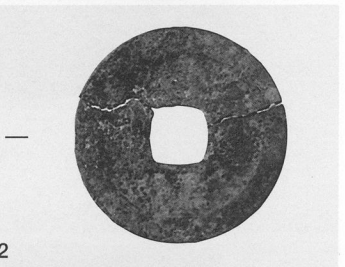
奈・平-8



中・近-11



中・近-12



中・近-8



中・近-9



中・近-10



鉄滓



茨城県教育財団文化財調査報告第155集  
中根・金田台特定土地区画整理事業  
地内埋蔵文化財調査報告書Ⅱ  
中原遺跡  
(下巻)

平成12(2000)年3月16日 印刷  
平成12(2000)年3月21日 発行

発行 財団法人 茨城県教育財団  
〒310-0911 水戸市見和1丁目356番地の2  
茨城県水戸生涯学習センター分館内  
TEL 029-225-6587

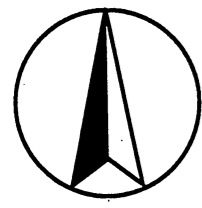
印刷 株式会社 あけぼの印刷社  
〒310-0804 水戸市白梅1丁目2番11号  
TEL 029-227-5505

付 図

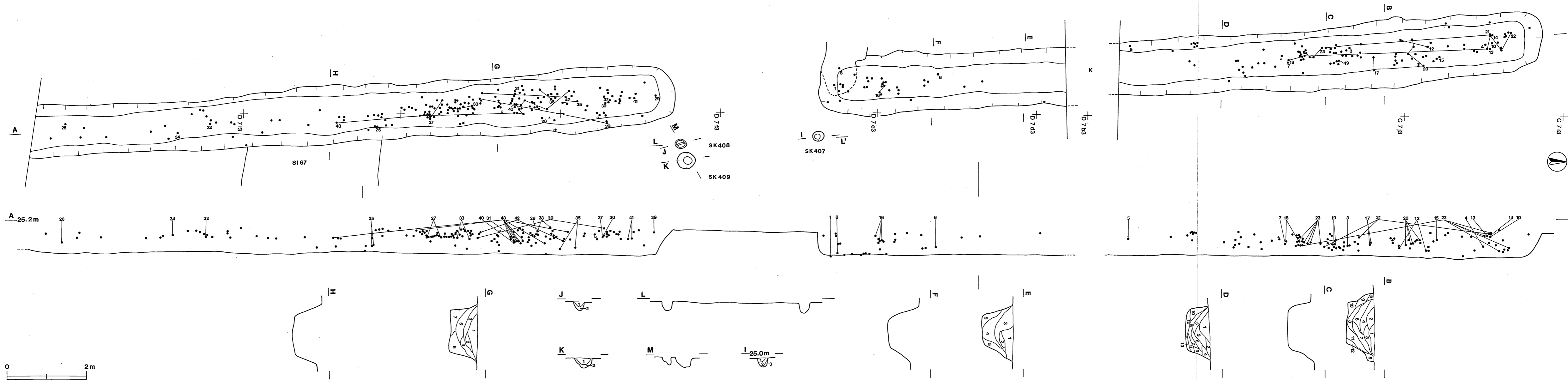
茨城県教育財団文化財調査報告第155集

中原遺跡全体図





付圖1 中原遺跡 (I・II A区) 全体圖



付図2 第1号堀, 第407~409号土坑実測図