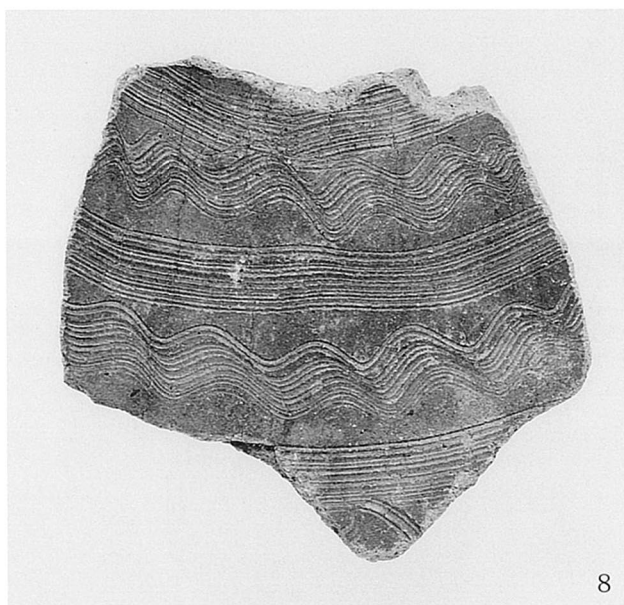


縄文土器（中期末、後期、晩期）





8



13



20



18



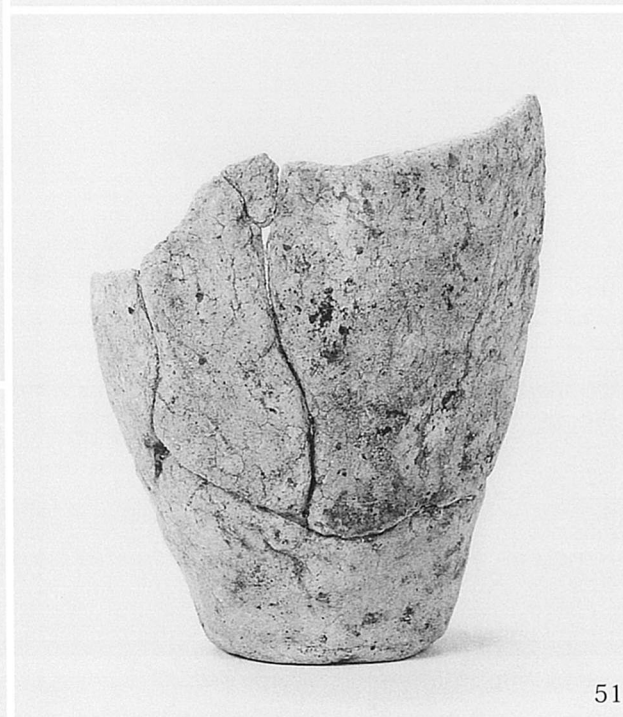
46



45



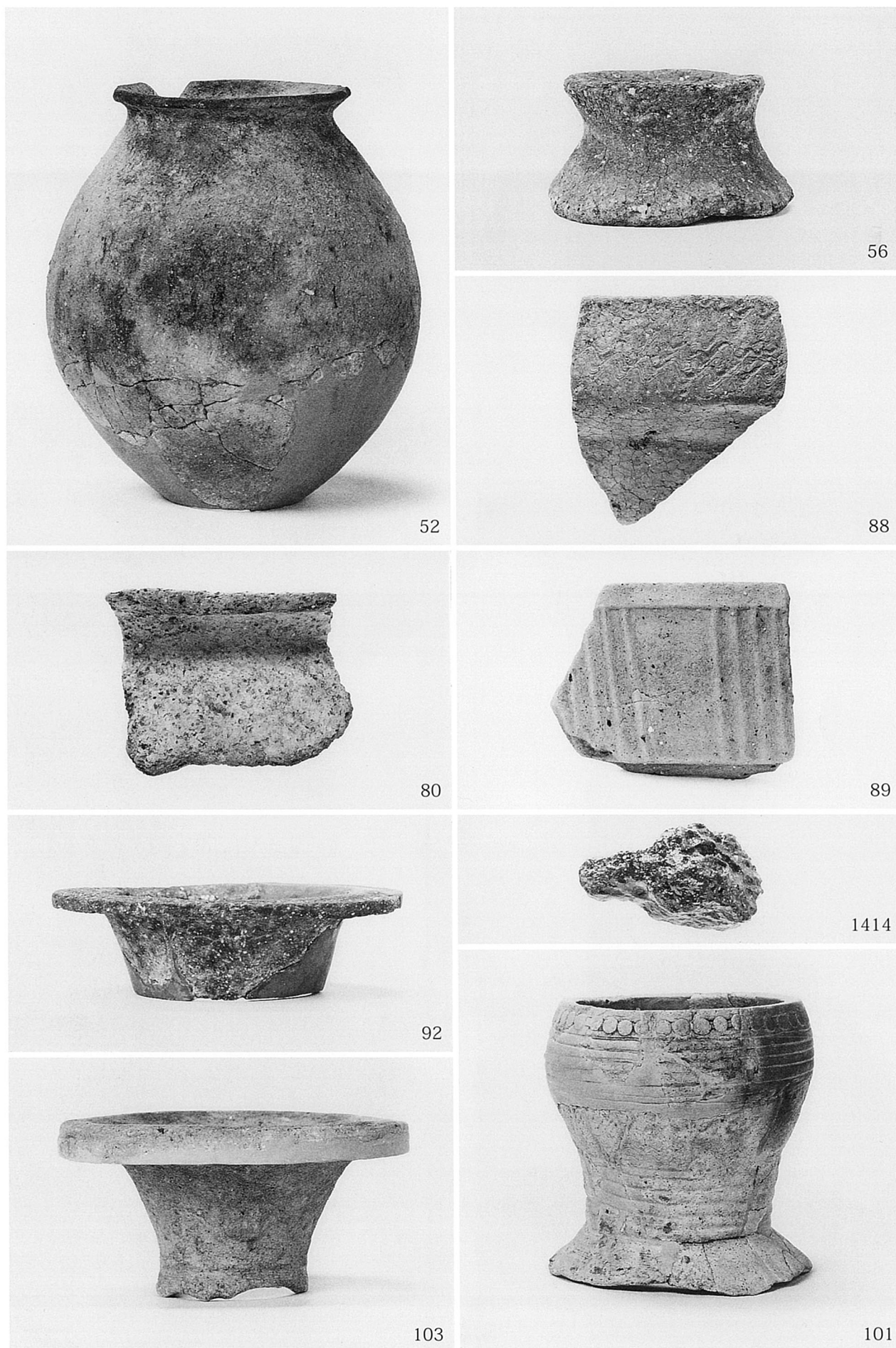
47



51

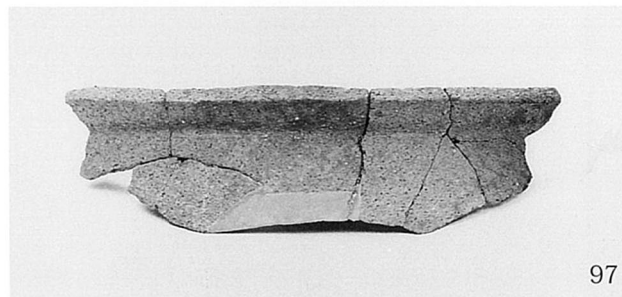
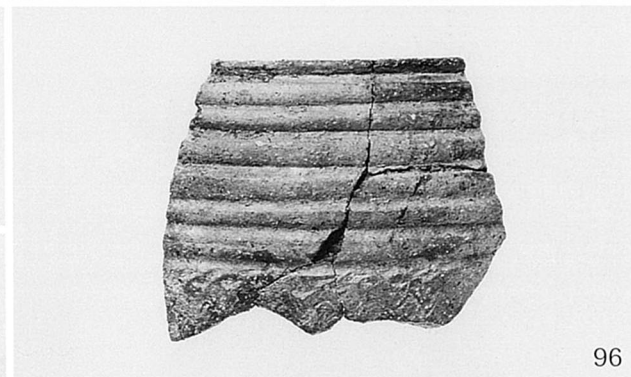
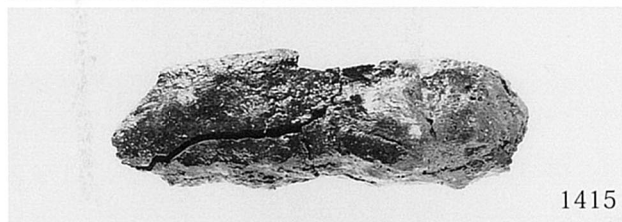
竪穴住居出土弥生土器 (竪穴住居 1、2、3、4)





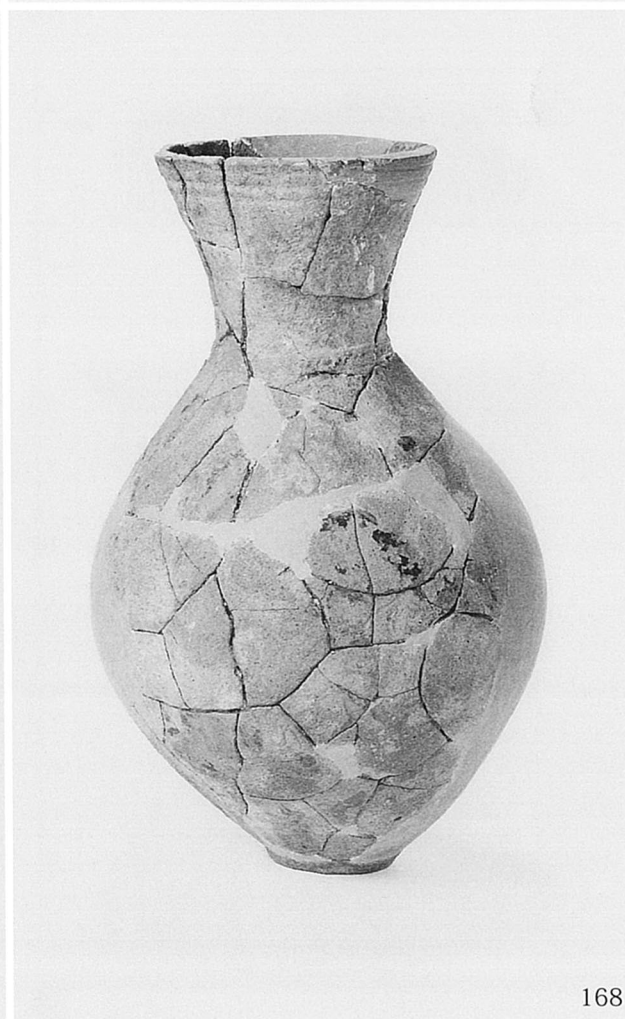
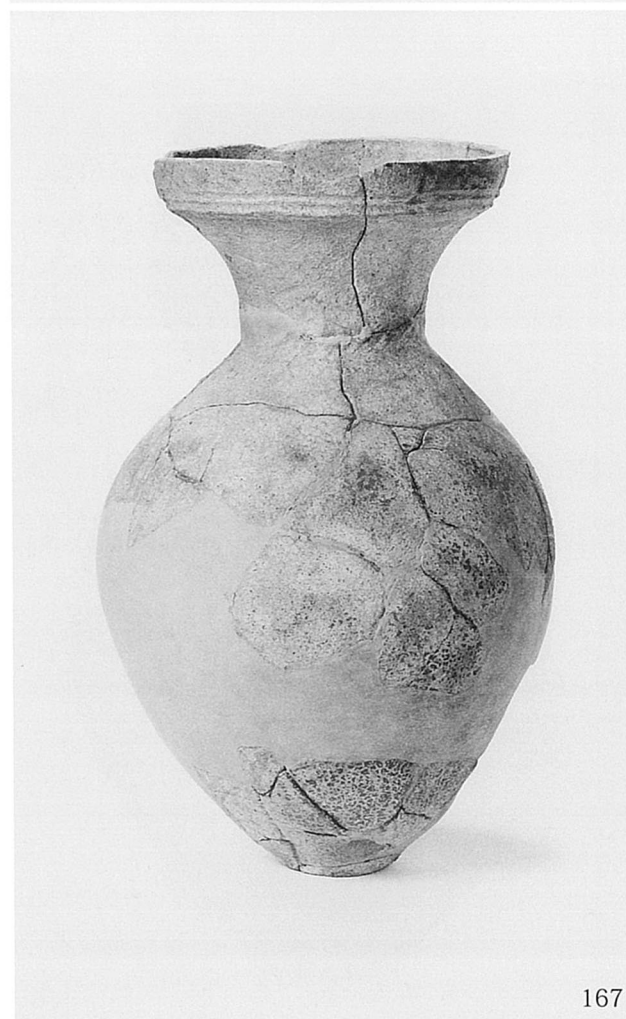
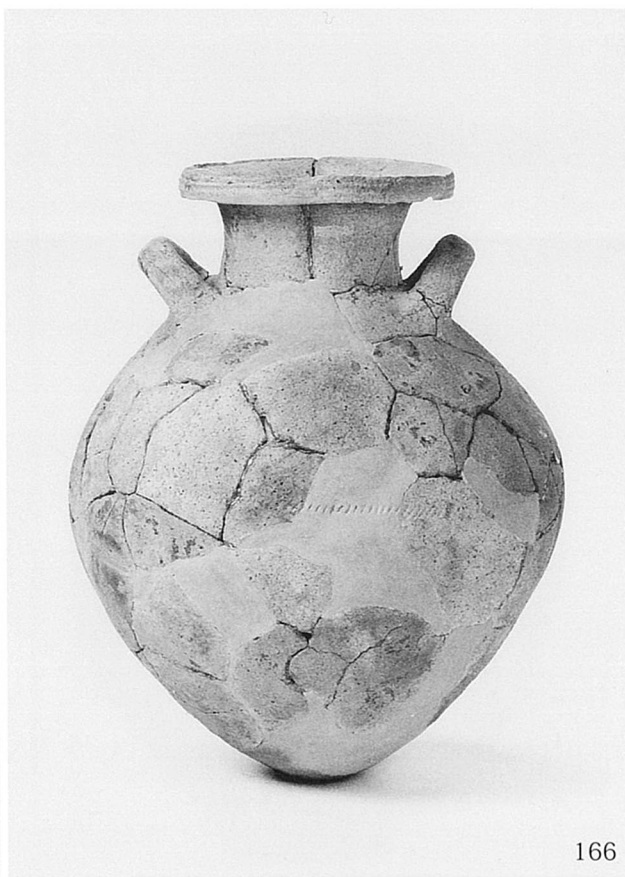
豎穴住居出土弥生土器 (豎穴住居 5・6・7、12、13、16、17)、豎穴住居 17 出土鉄製品





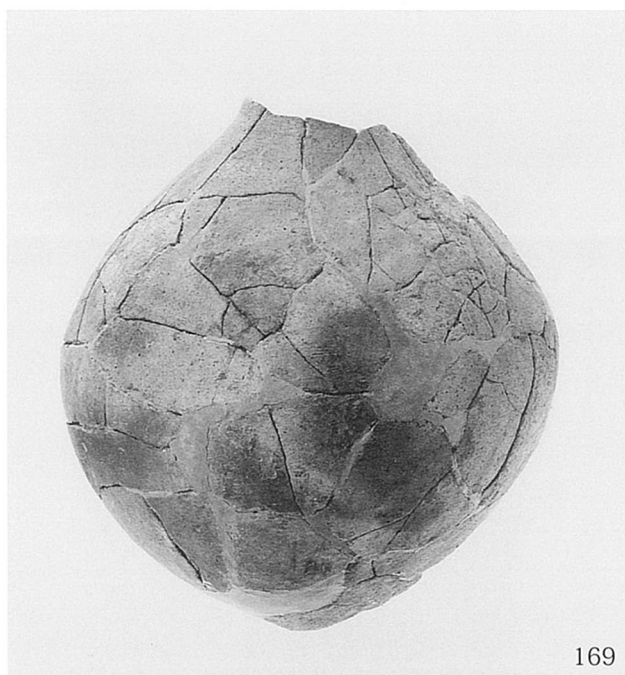
竪穴住居出土弥生土器 (竪穴住居 17、20、21、24)、竪穴住居 22・23 出土鉄製品





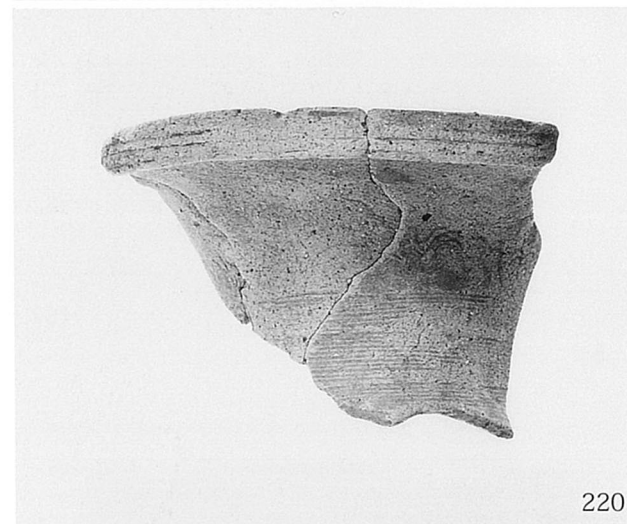
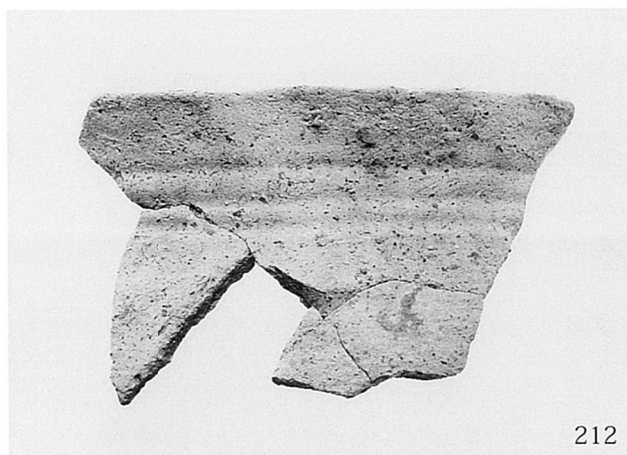
竪穴住居出土弥生土器 (竪穴住居 25、27)



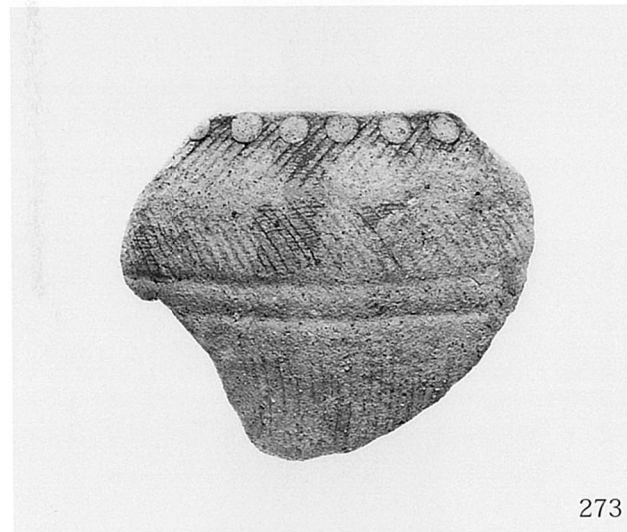
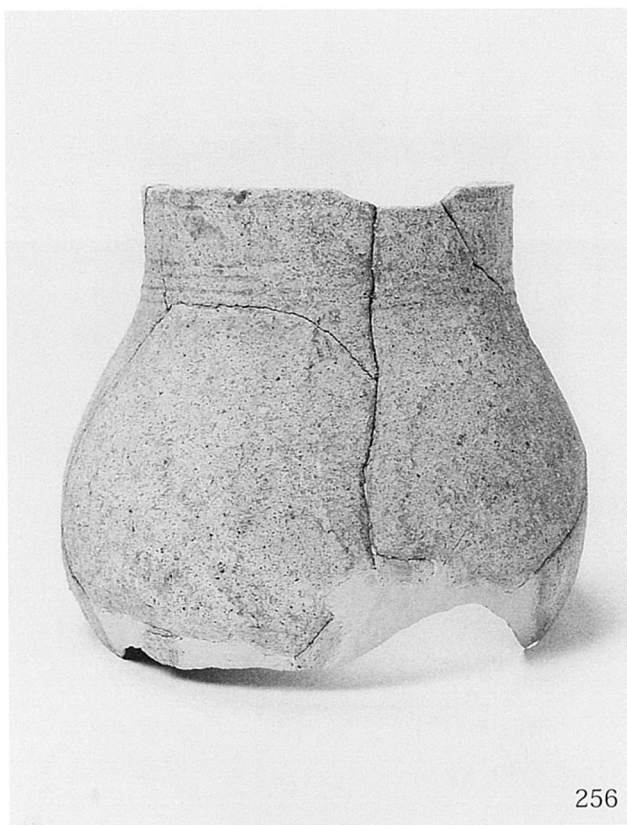


豎穴住居出土弥生土器 (豎穴住居 27、28・29・30、31)



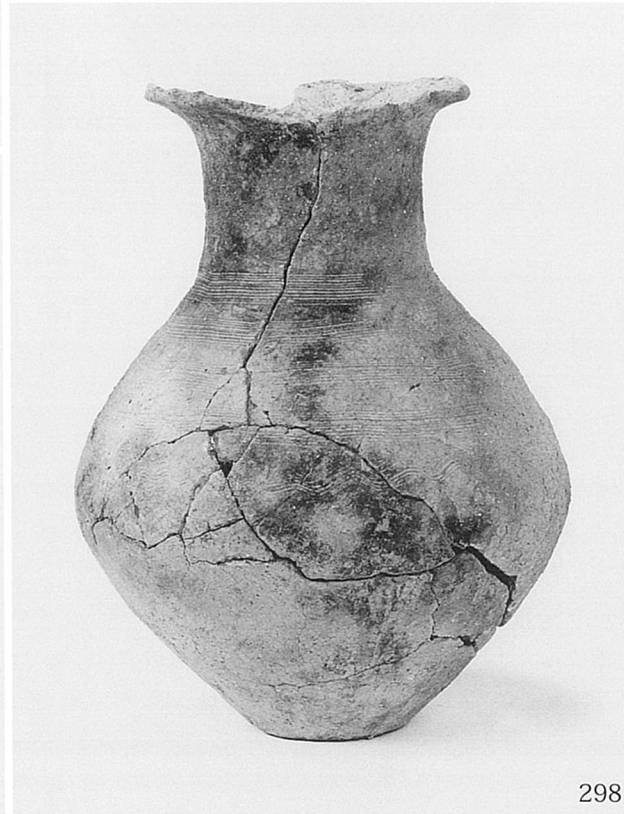






土坑出土弥生土器 (2)



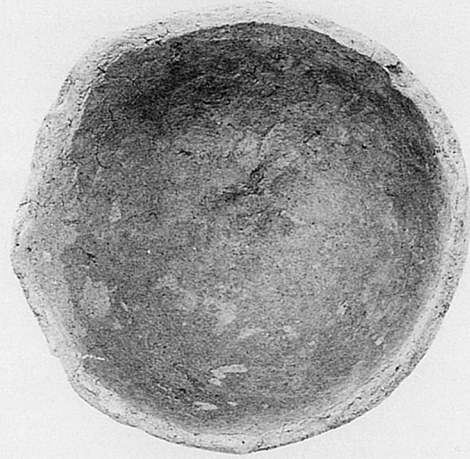


土坑出土弥生土器 (3)、溝出土弥生土器 (1)





319



328



332



305



330

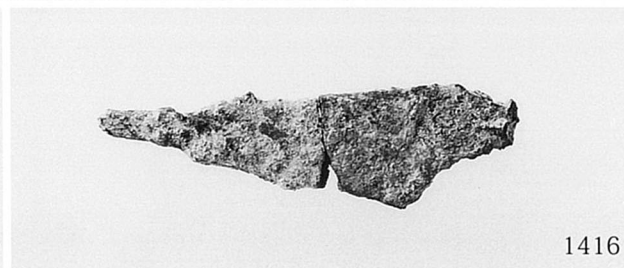
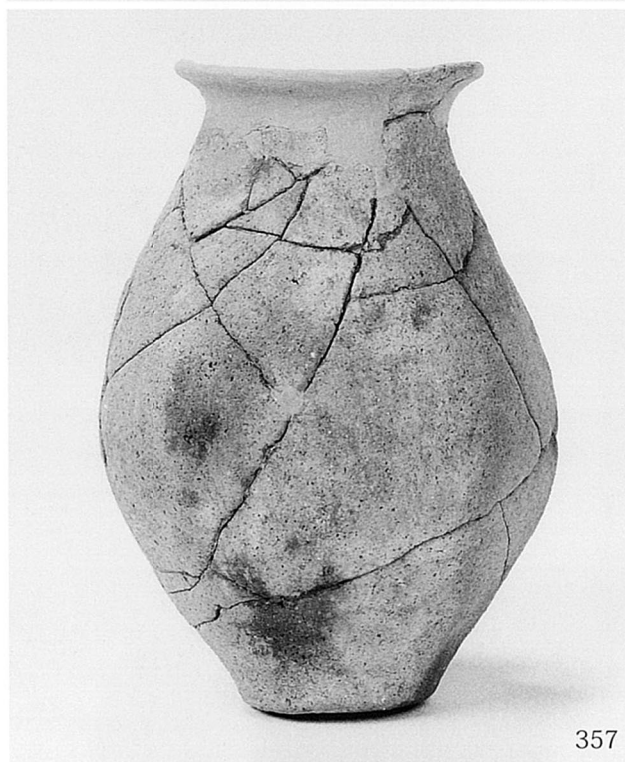
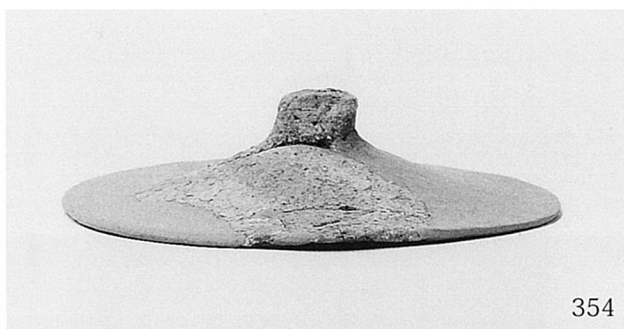
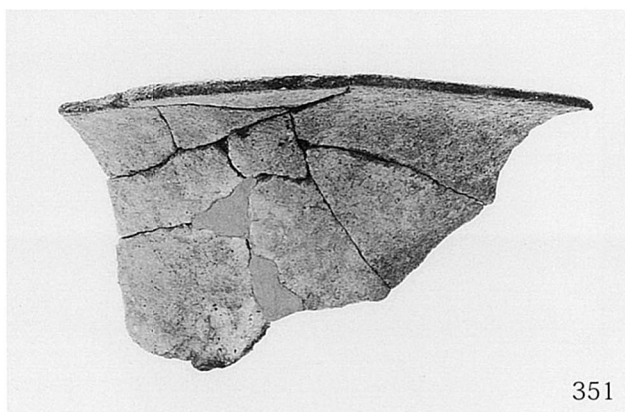


333

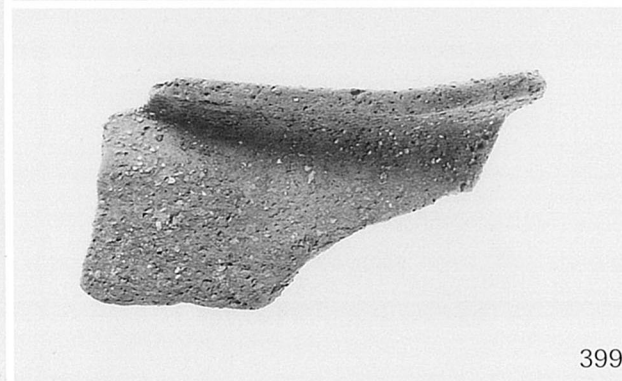
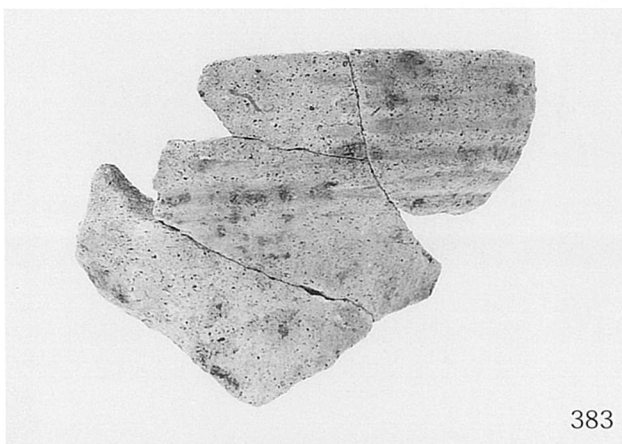


342



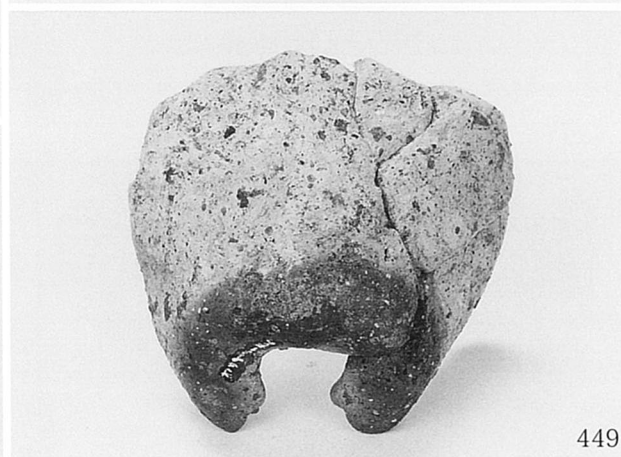
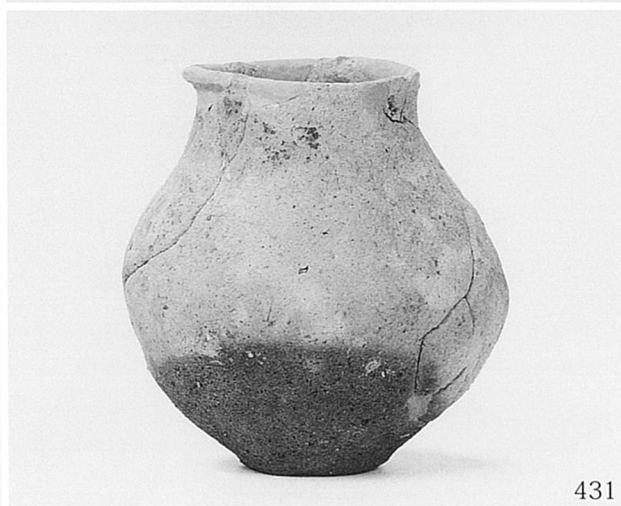




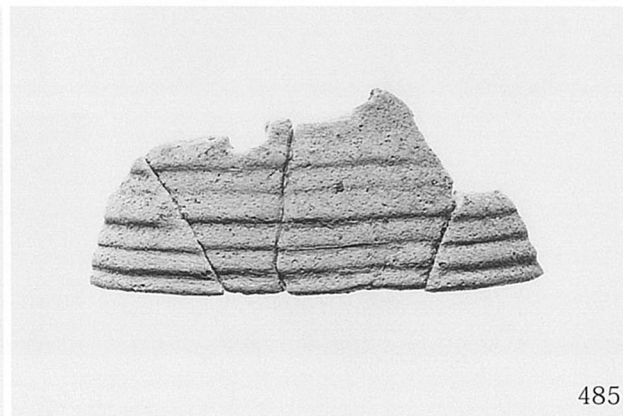
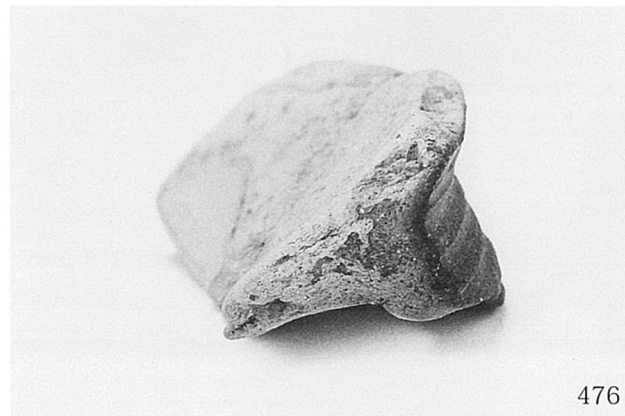
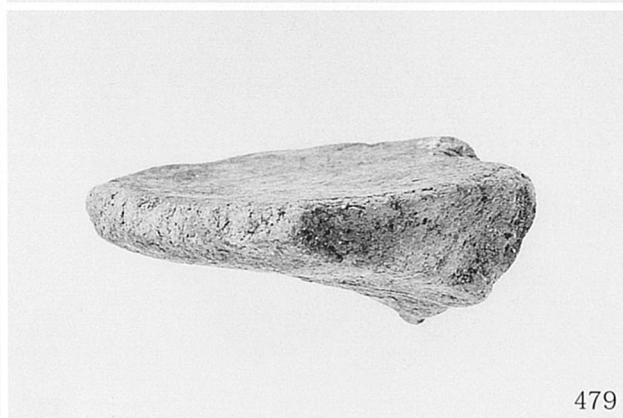


大溝 1 出土弥生土器 (2)





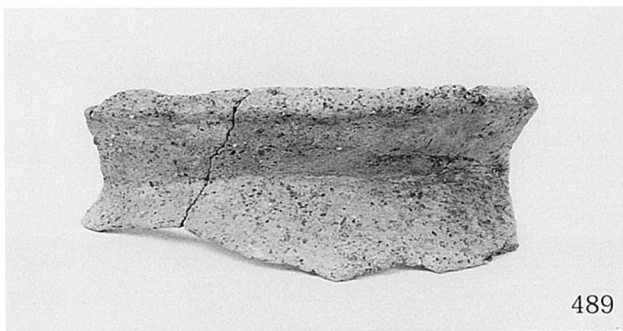








488



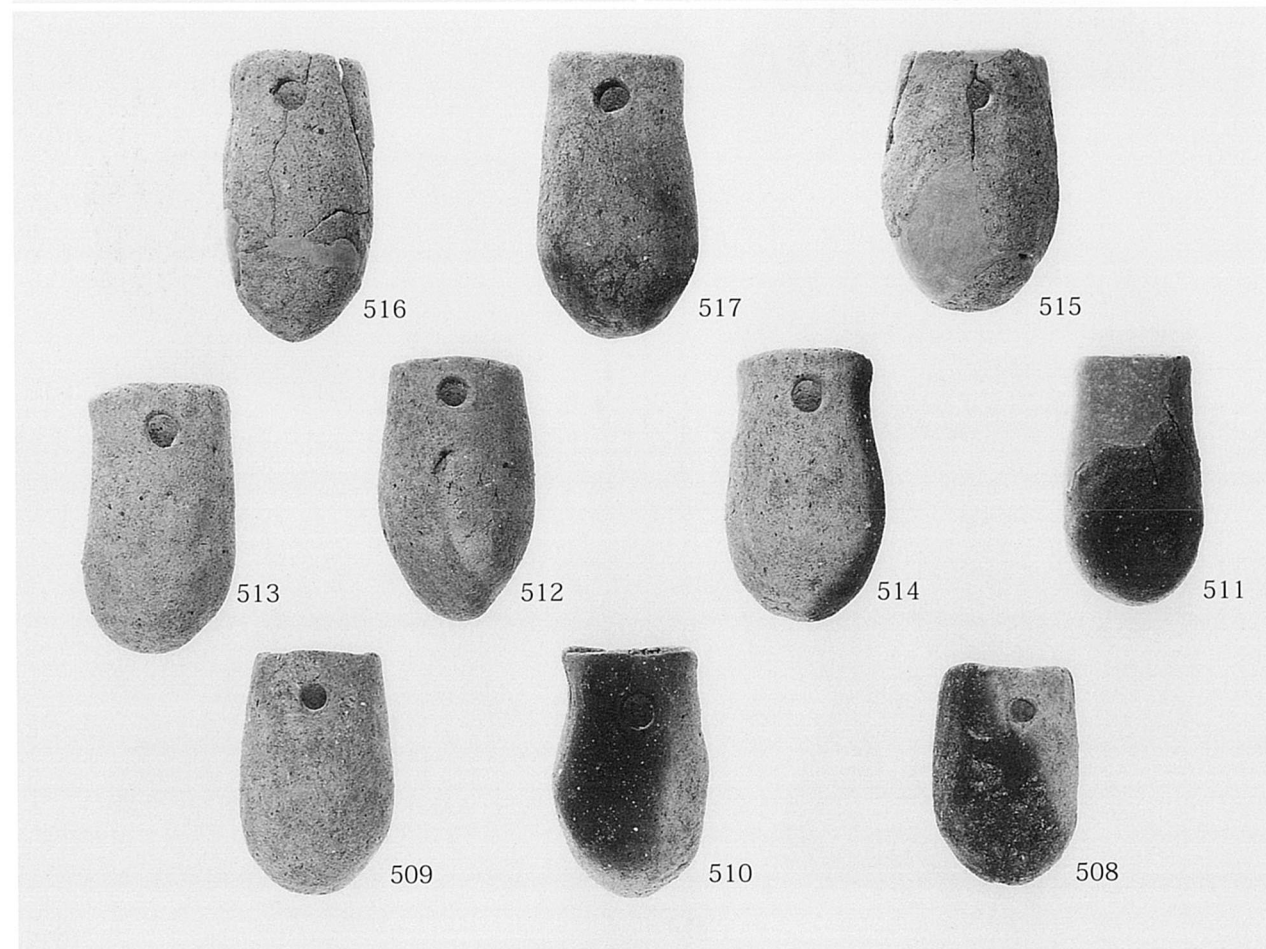
489



497

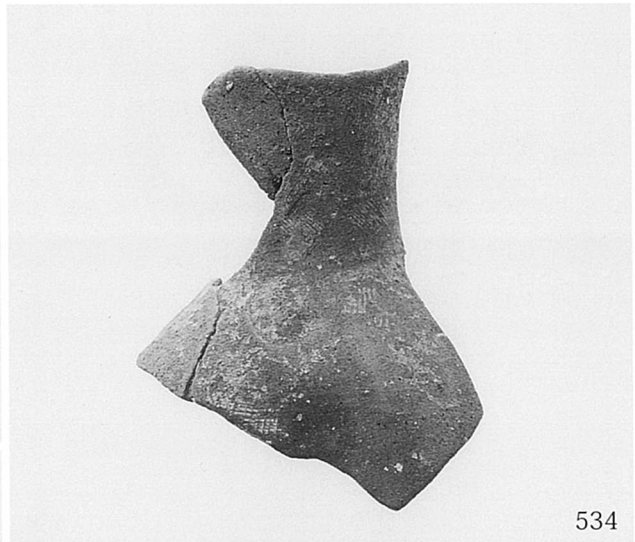
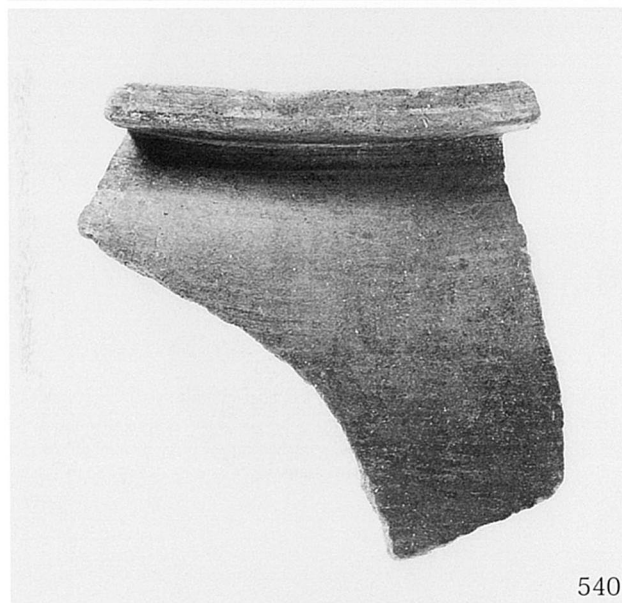
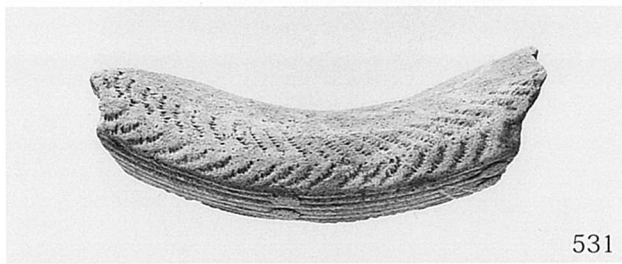


500



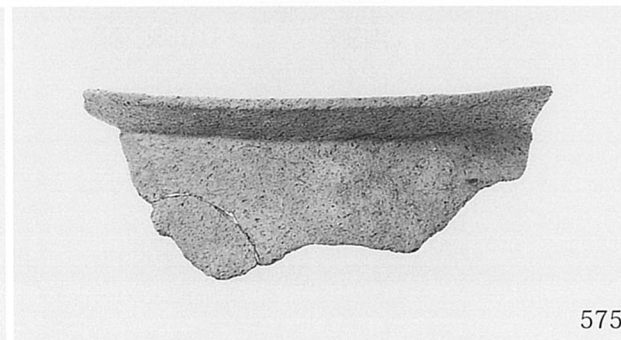
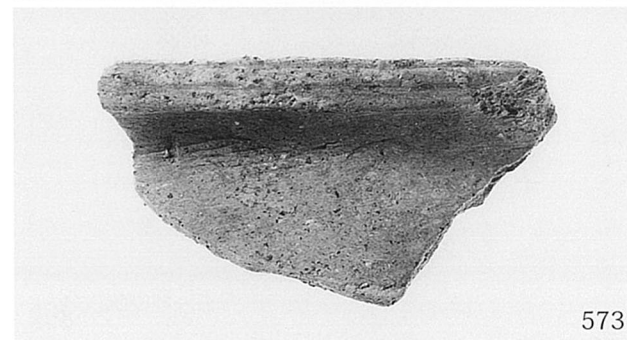
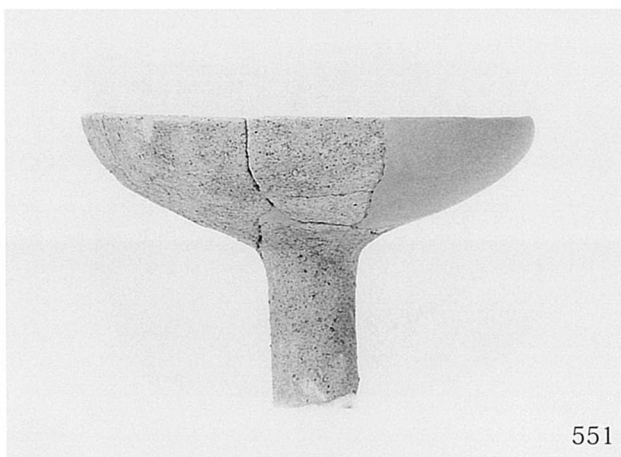
大溝 1 出土弥生土器 (5)



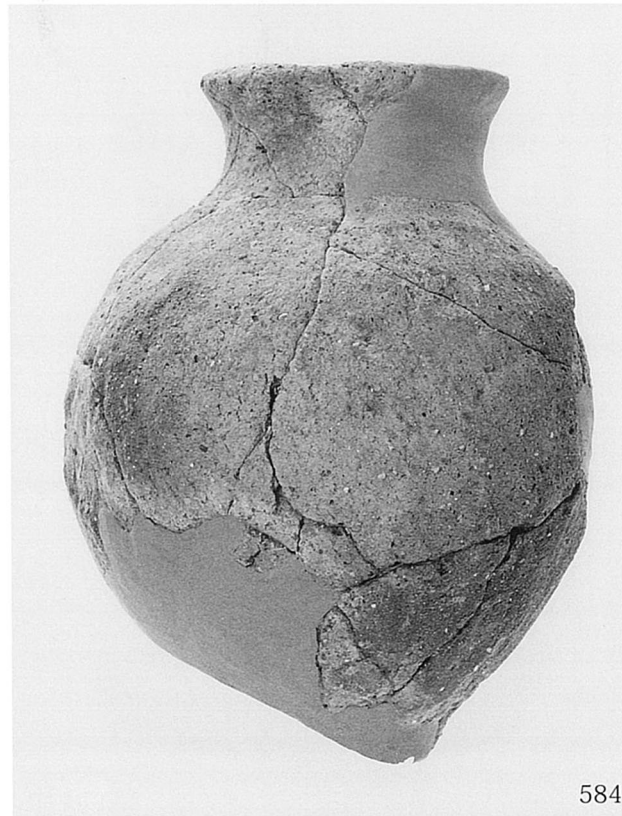
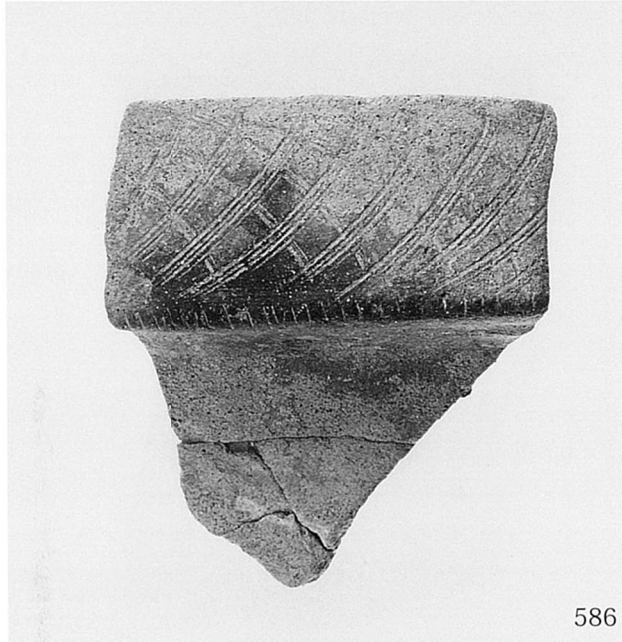
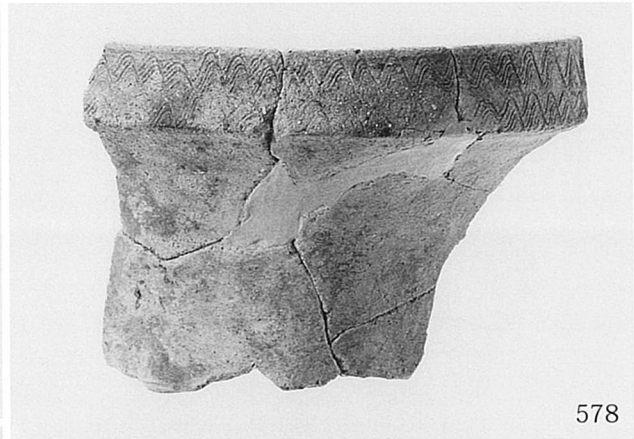
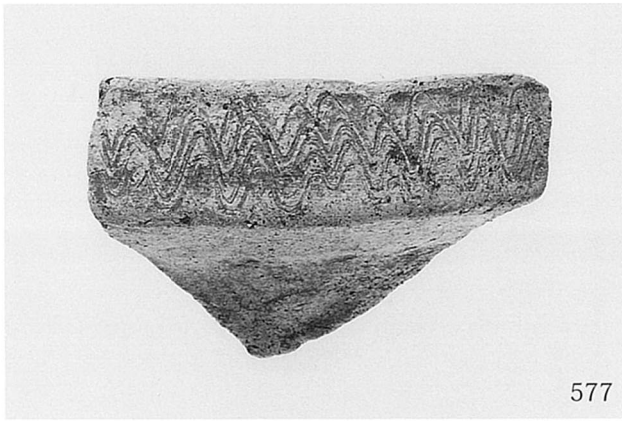


大溝 1 出土弥生土器 (6)



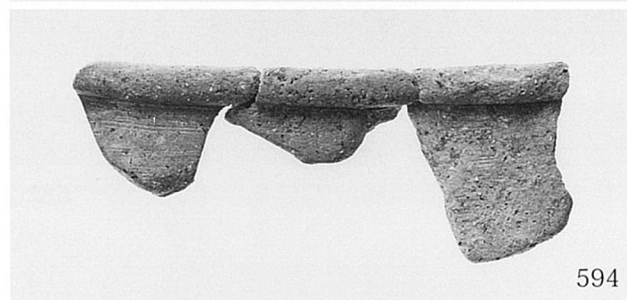
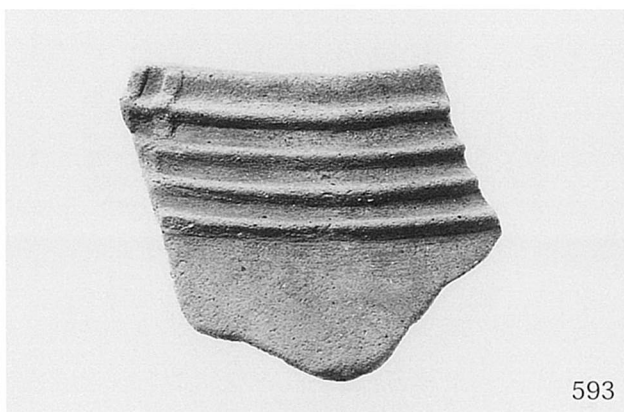




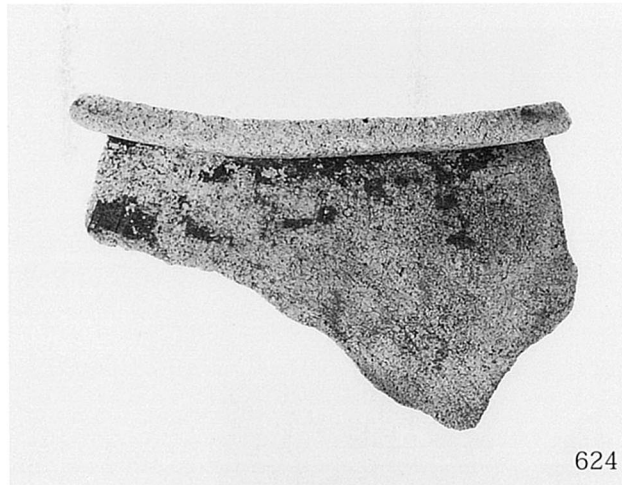
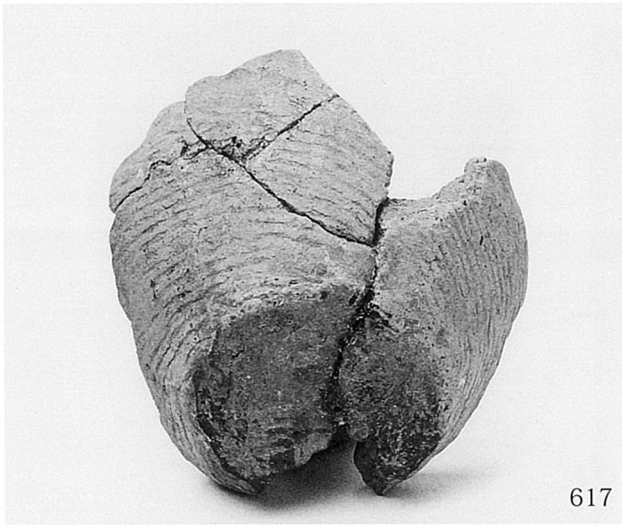


大溝 1 出土弥生土器 (8)



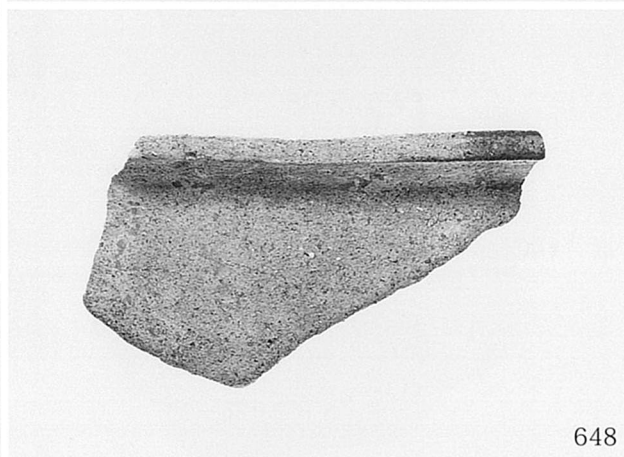






大溝 1 出土弥生土器 (10)









662



750



752



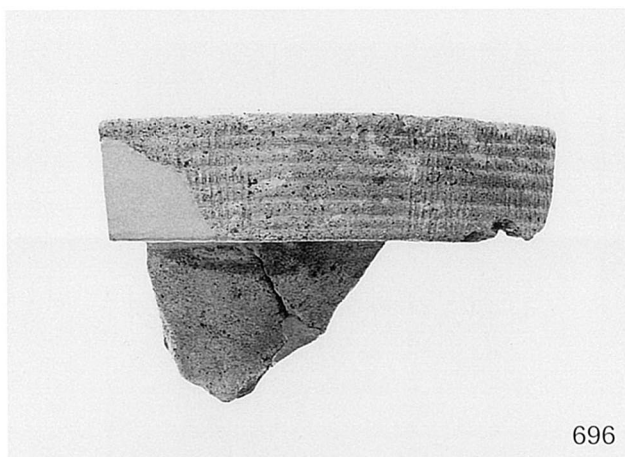
757



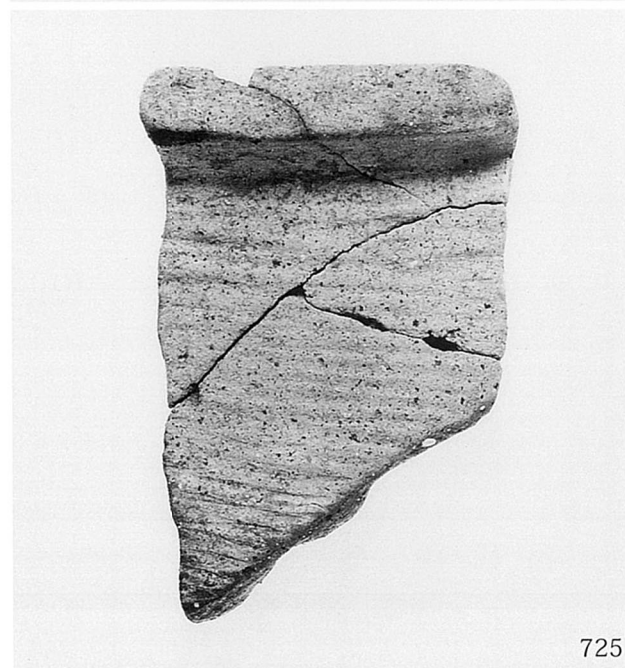
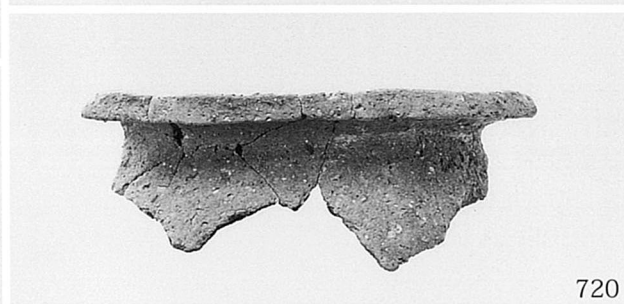
765

大溝 1 出土弥生土器 (12)









大溝 2 出土弥生土器 (2)



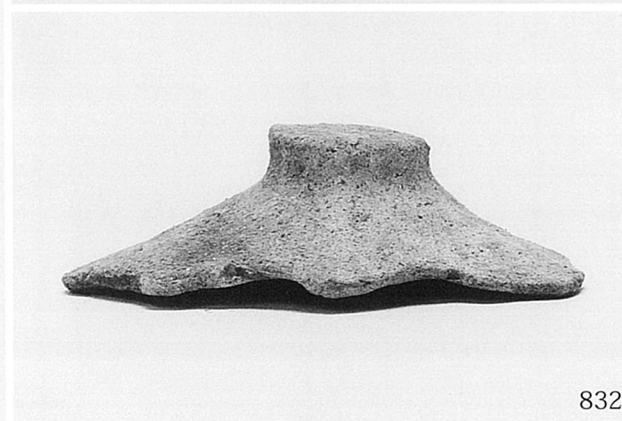




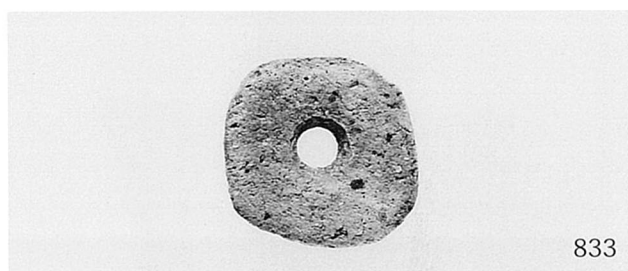


大溝3出土弥生土器 (2)

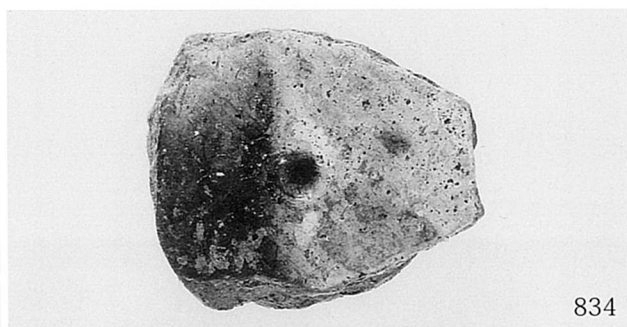




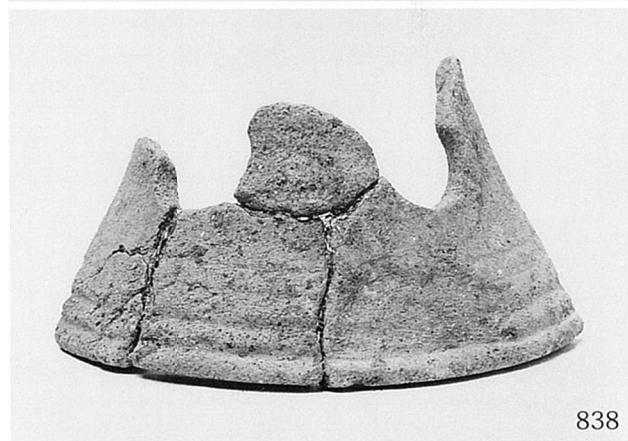




833



834



838



839



845



840



850

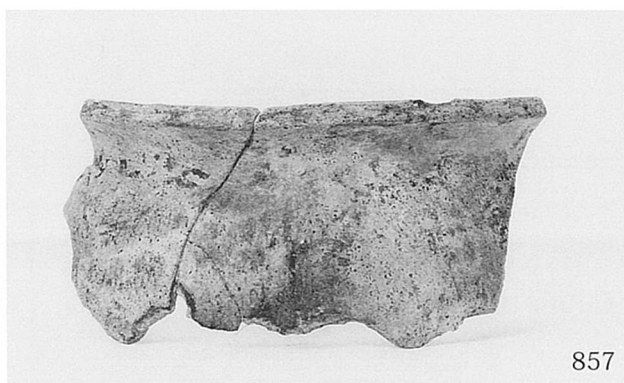


848

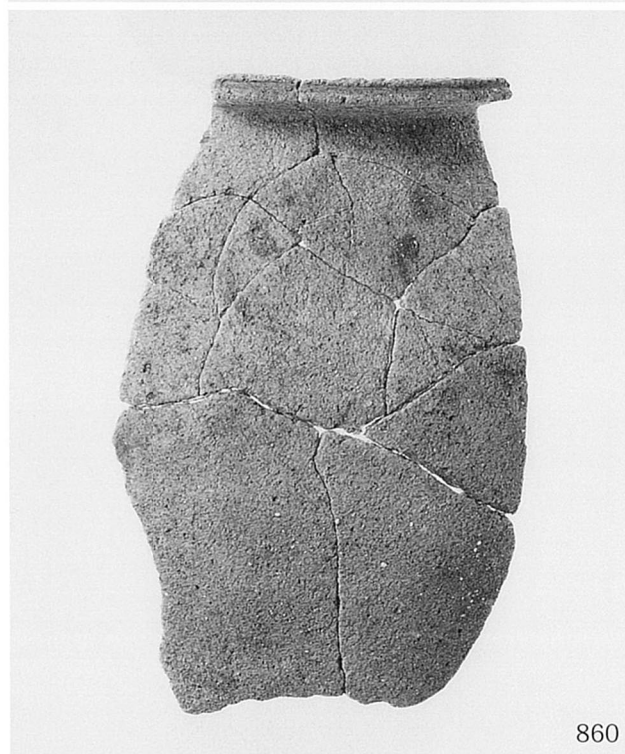




856



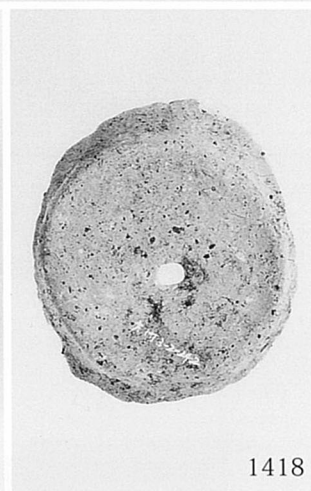
857



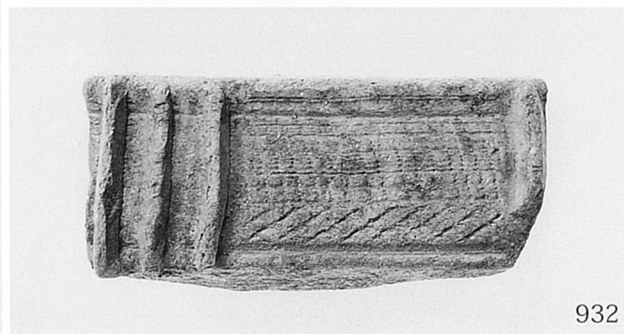
860



1417



1418



932



870



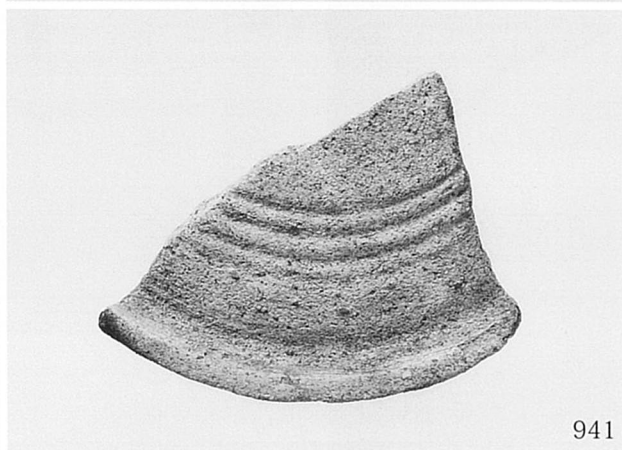
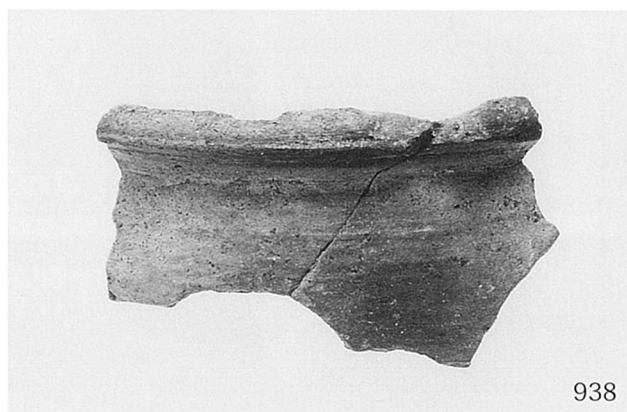
933



934

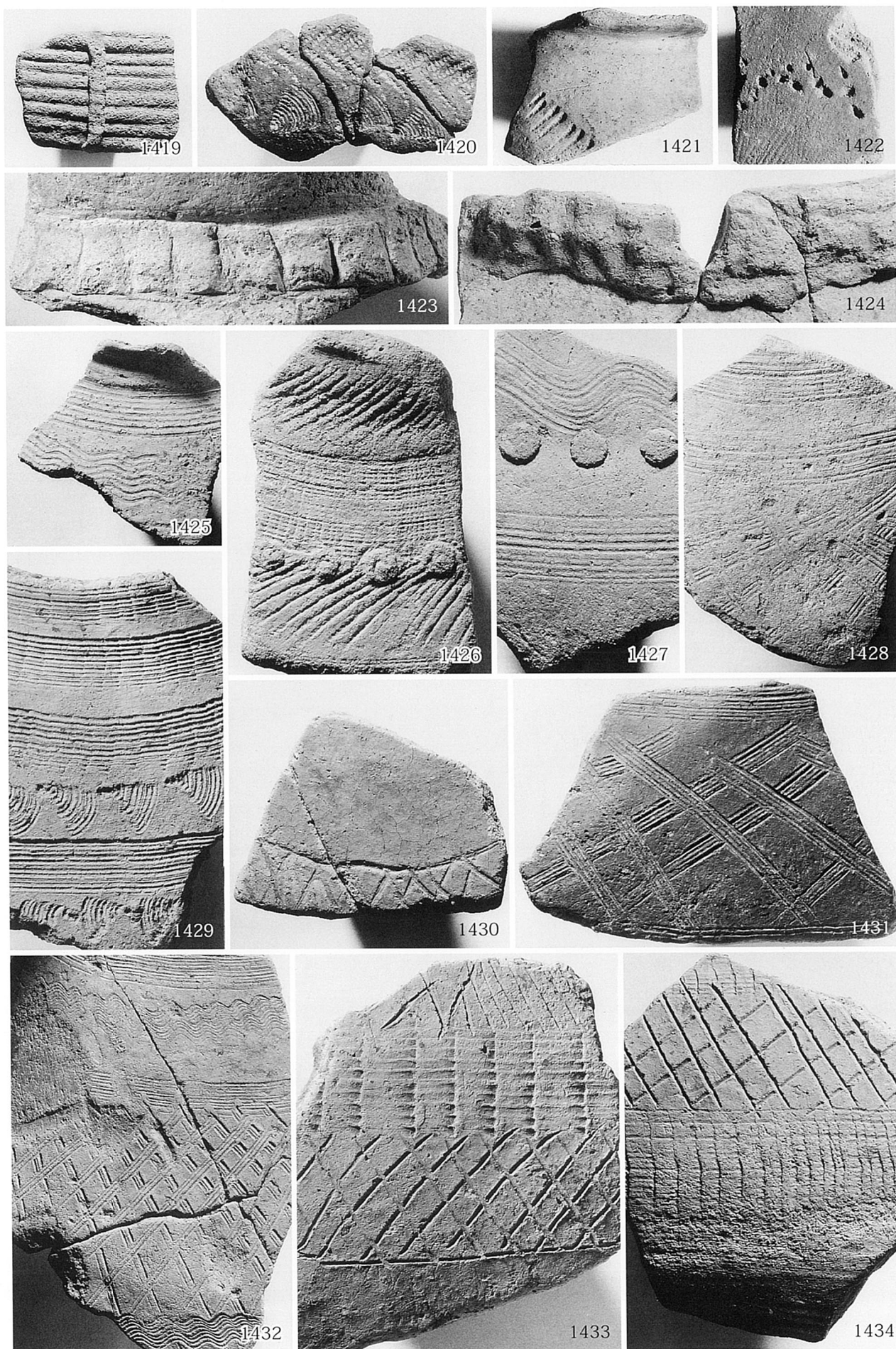
大溝 3 出土弥生土器 (5)、大溝 4 出土弥生土器 (1)





大溝4出土弥生土器 (2)



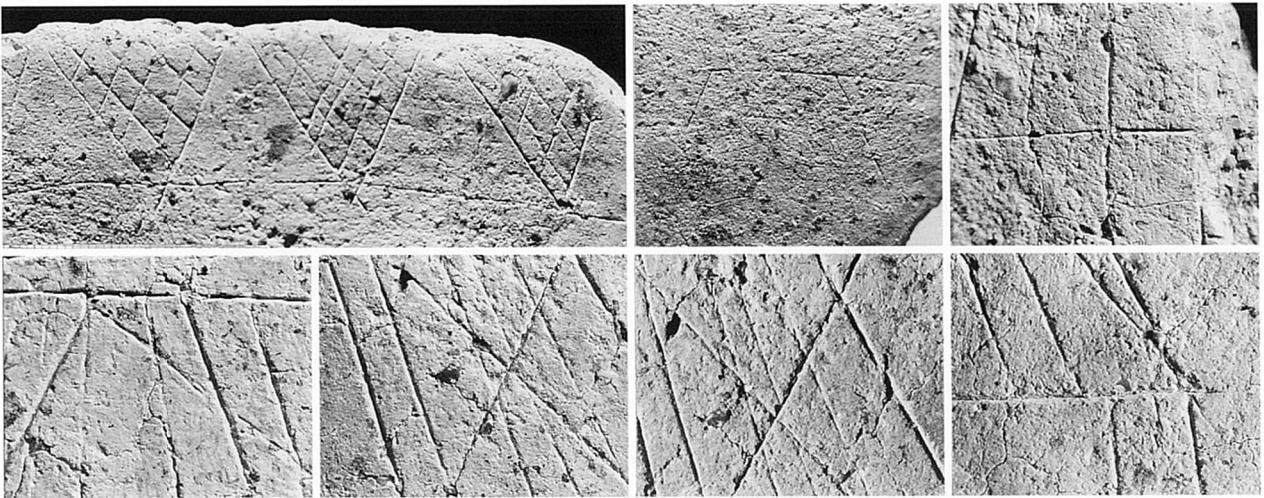


大溝 1 出土弥生土器の文様

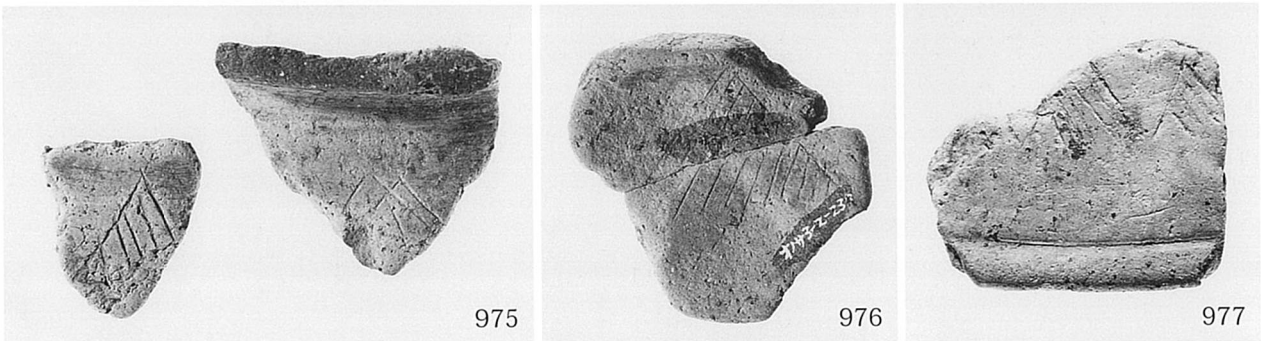




974



大溝 1 出土絵画土器、文様の細部



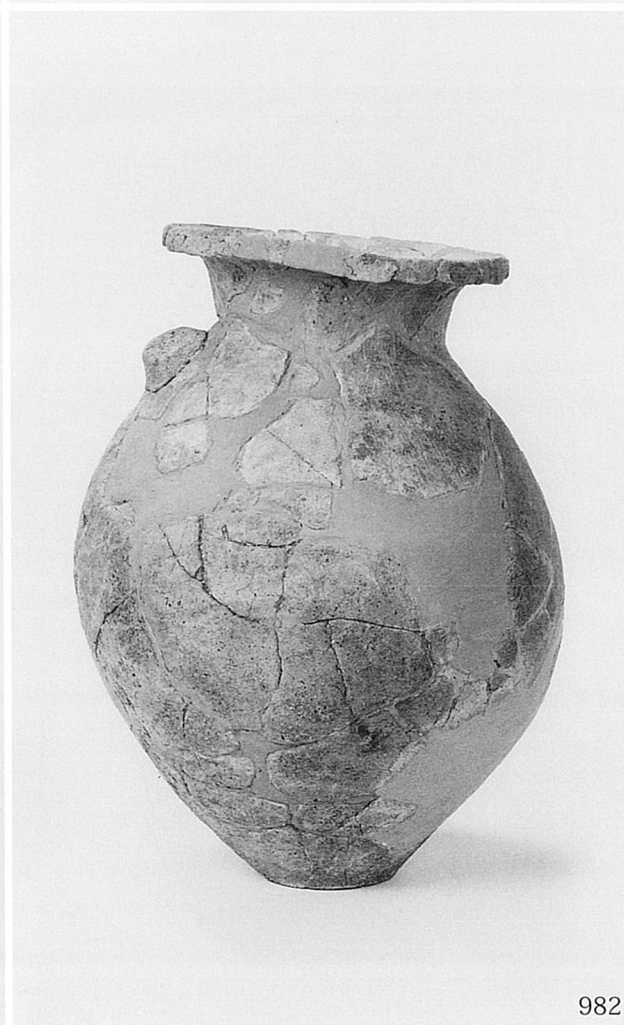
975

976

977

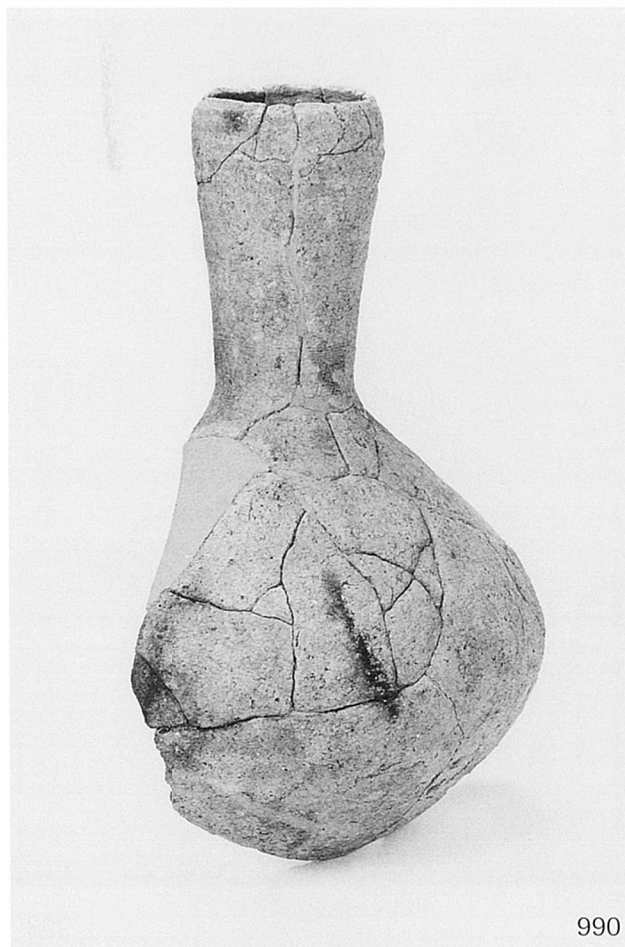
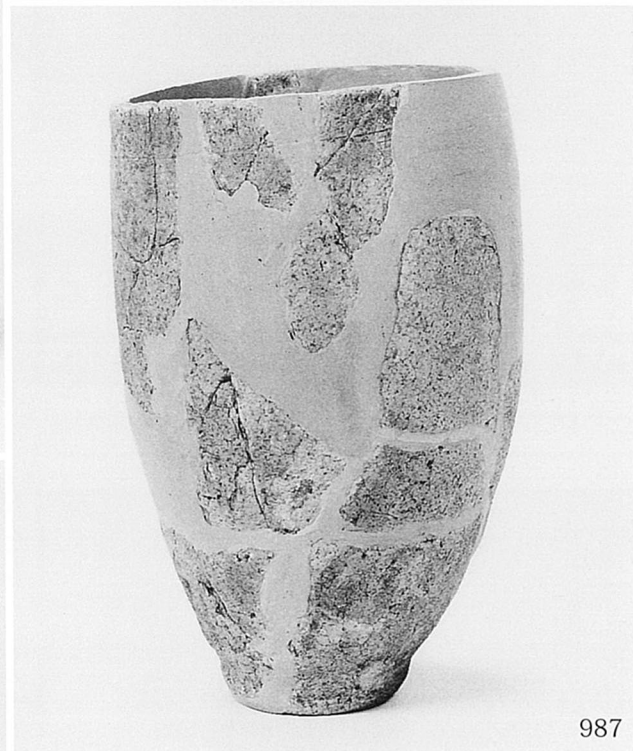
大溝 3 出土絵画土器





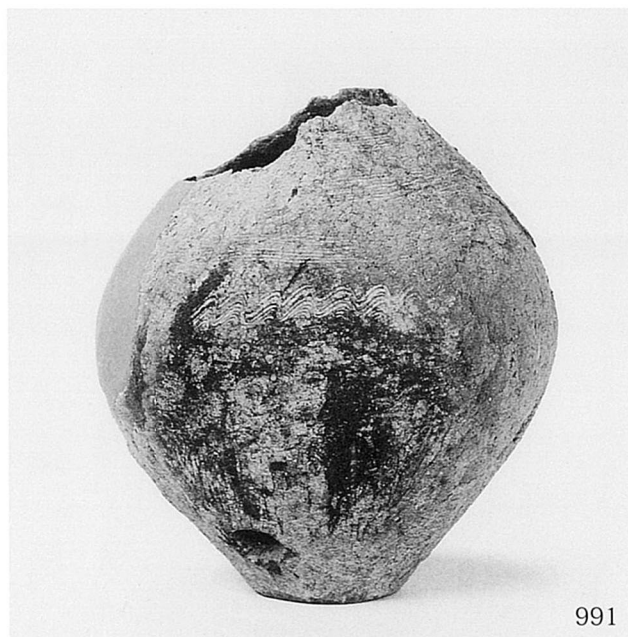
方形周溝墓 1・2 出土弥生土器





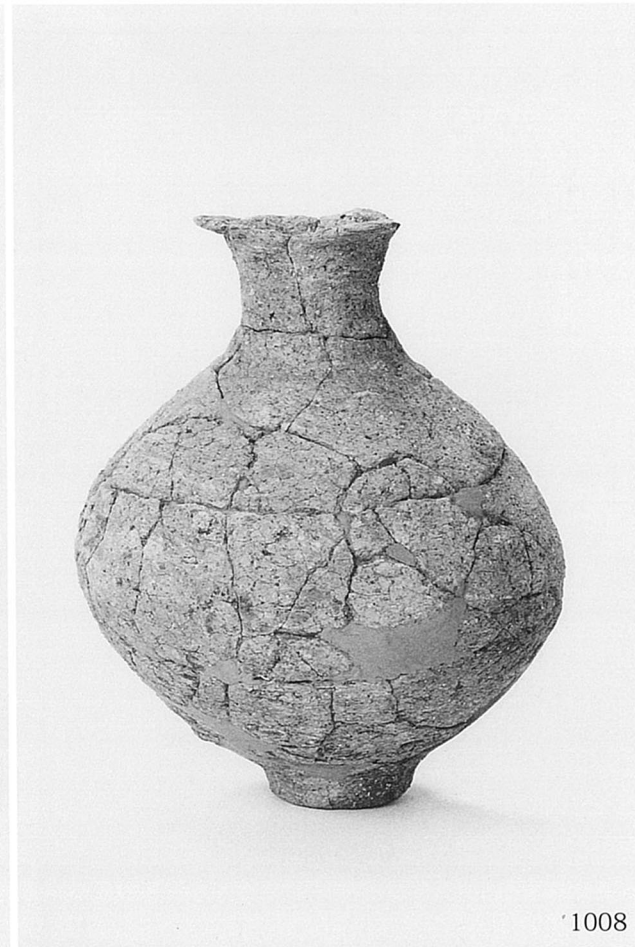
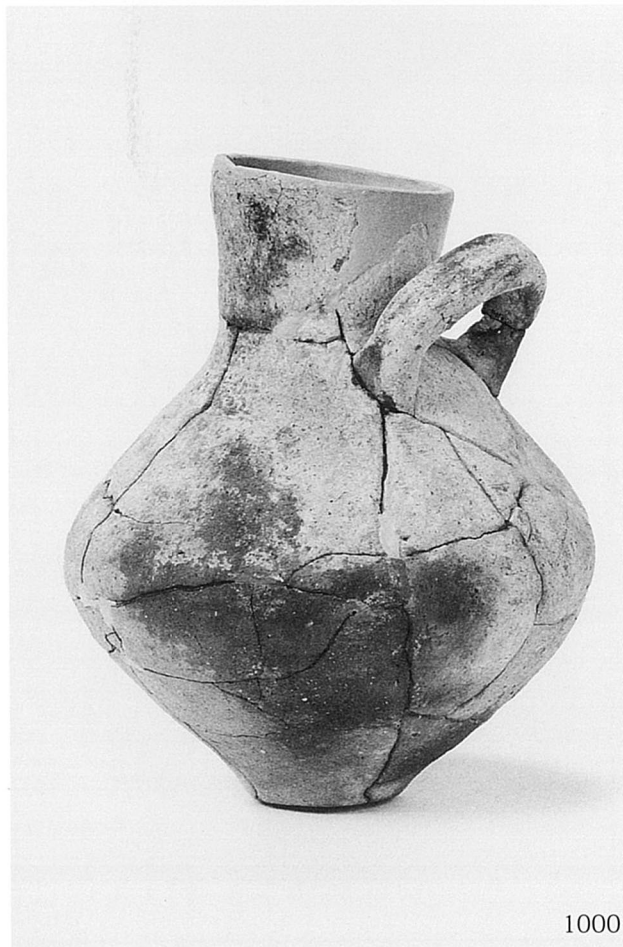
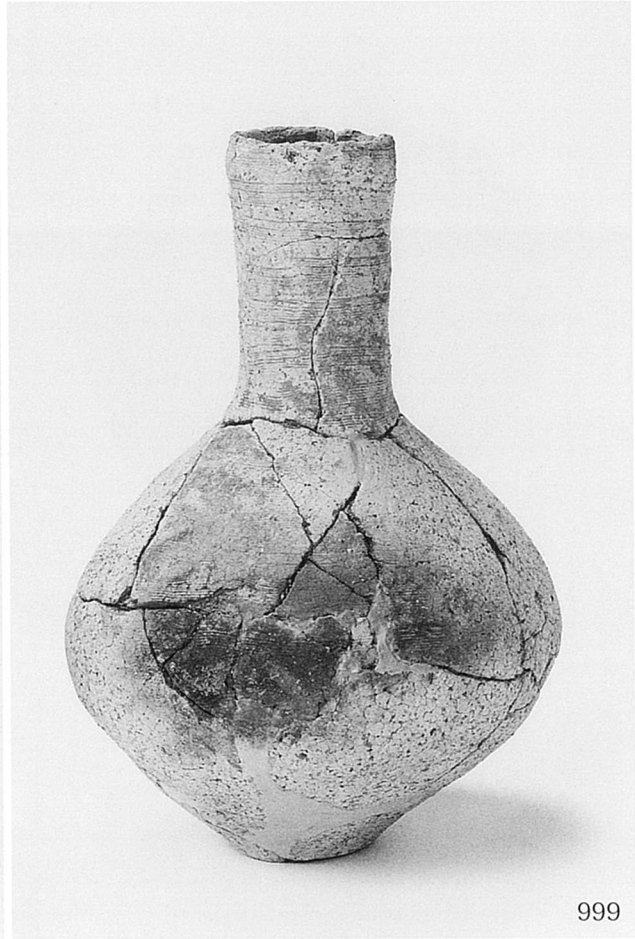
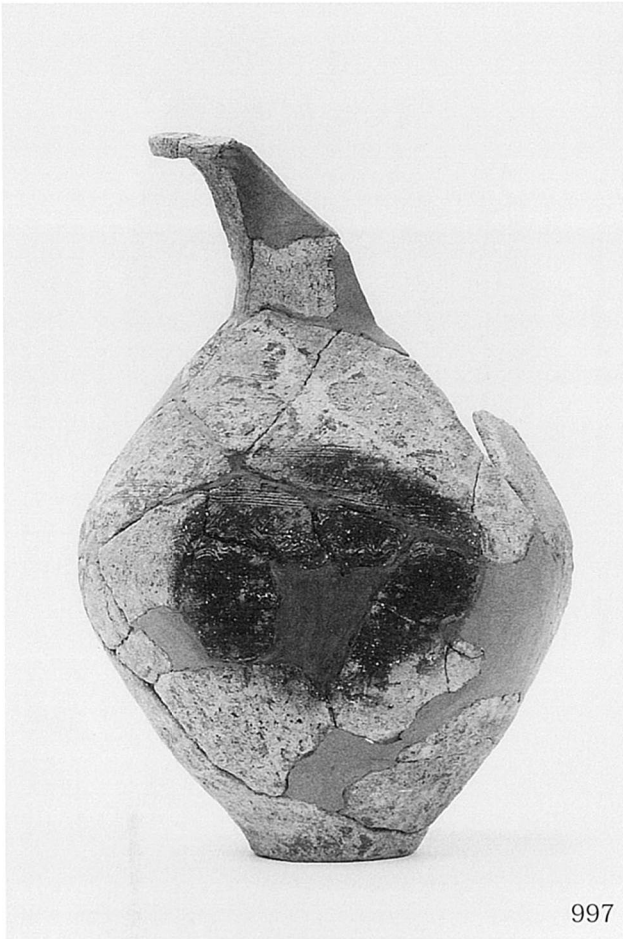
包含層等出土弥生土器 (1)





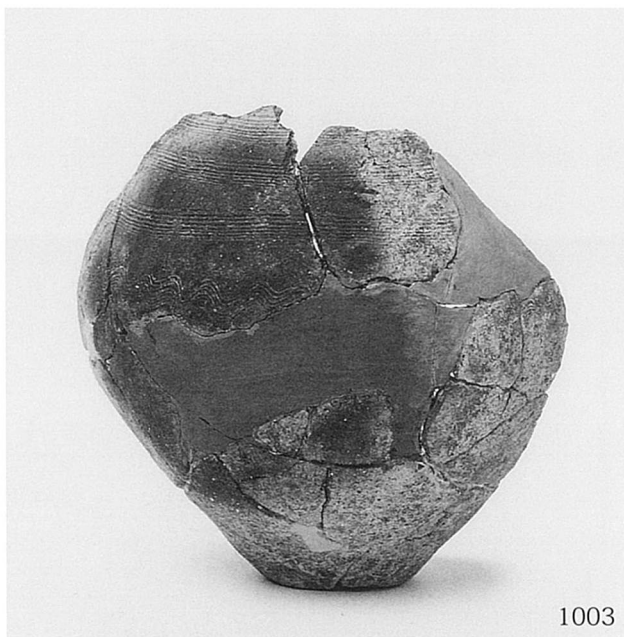
包含層等出土弥生土器 (2)





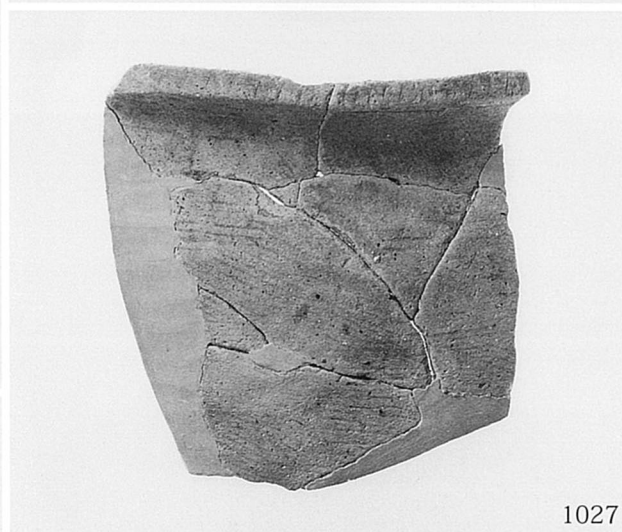
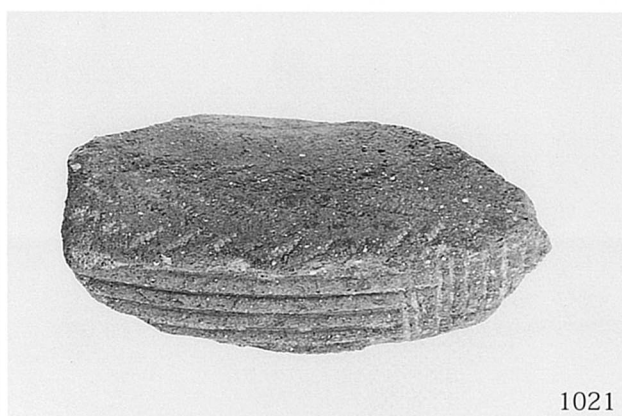
包含層等出土弥生土器 (3)





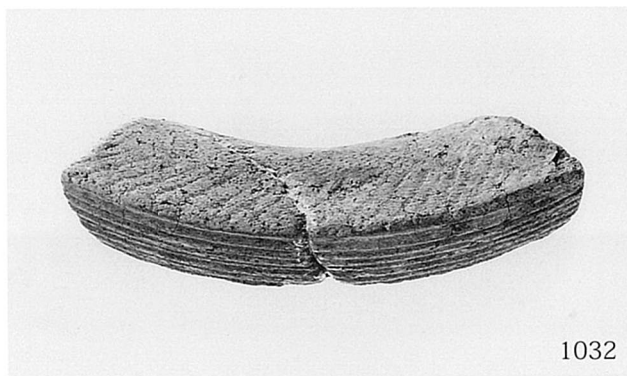
包含層等出土弥生土器 (4)



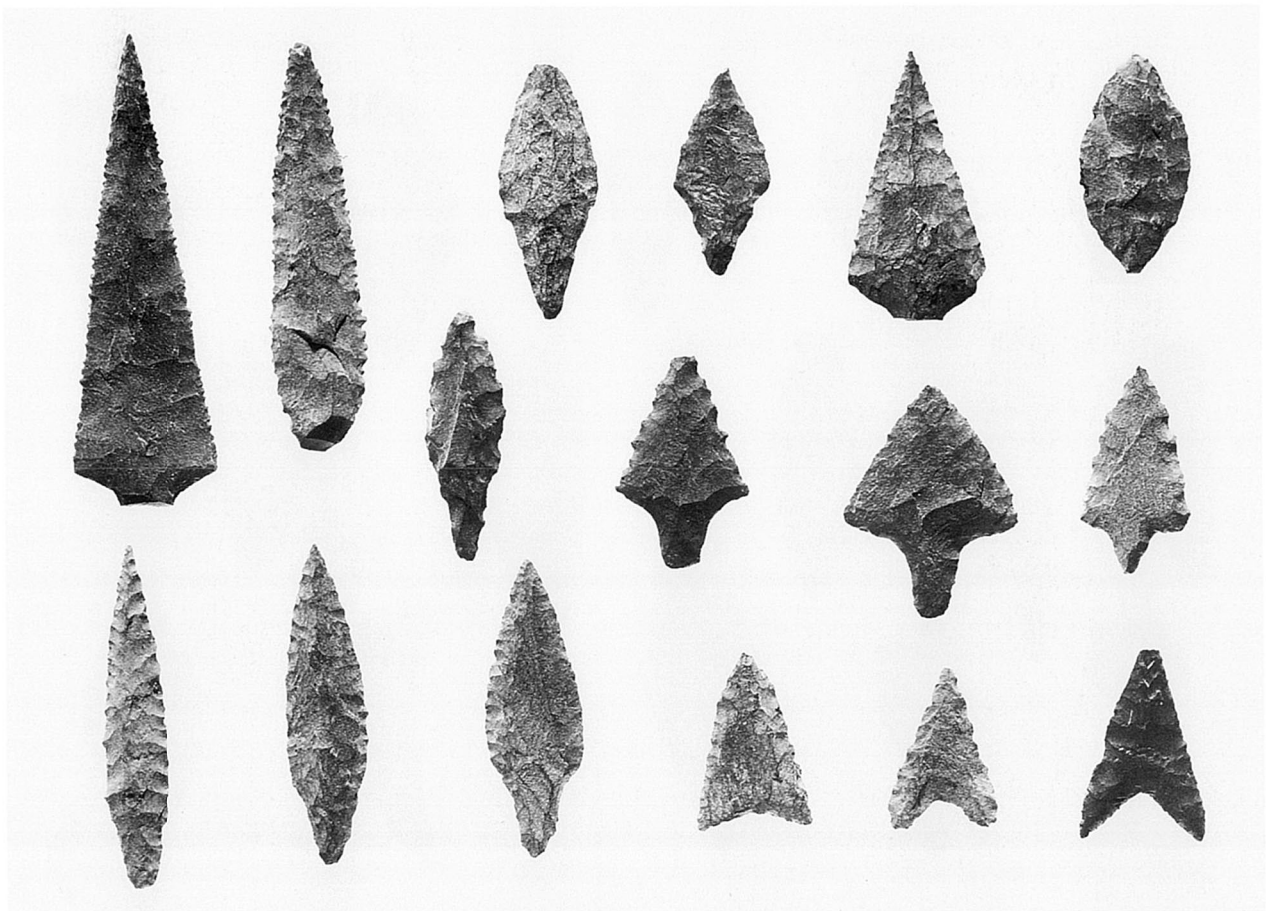
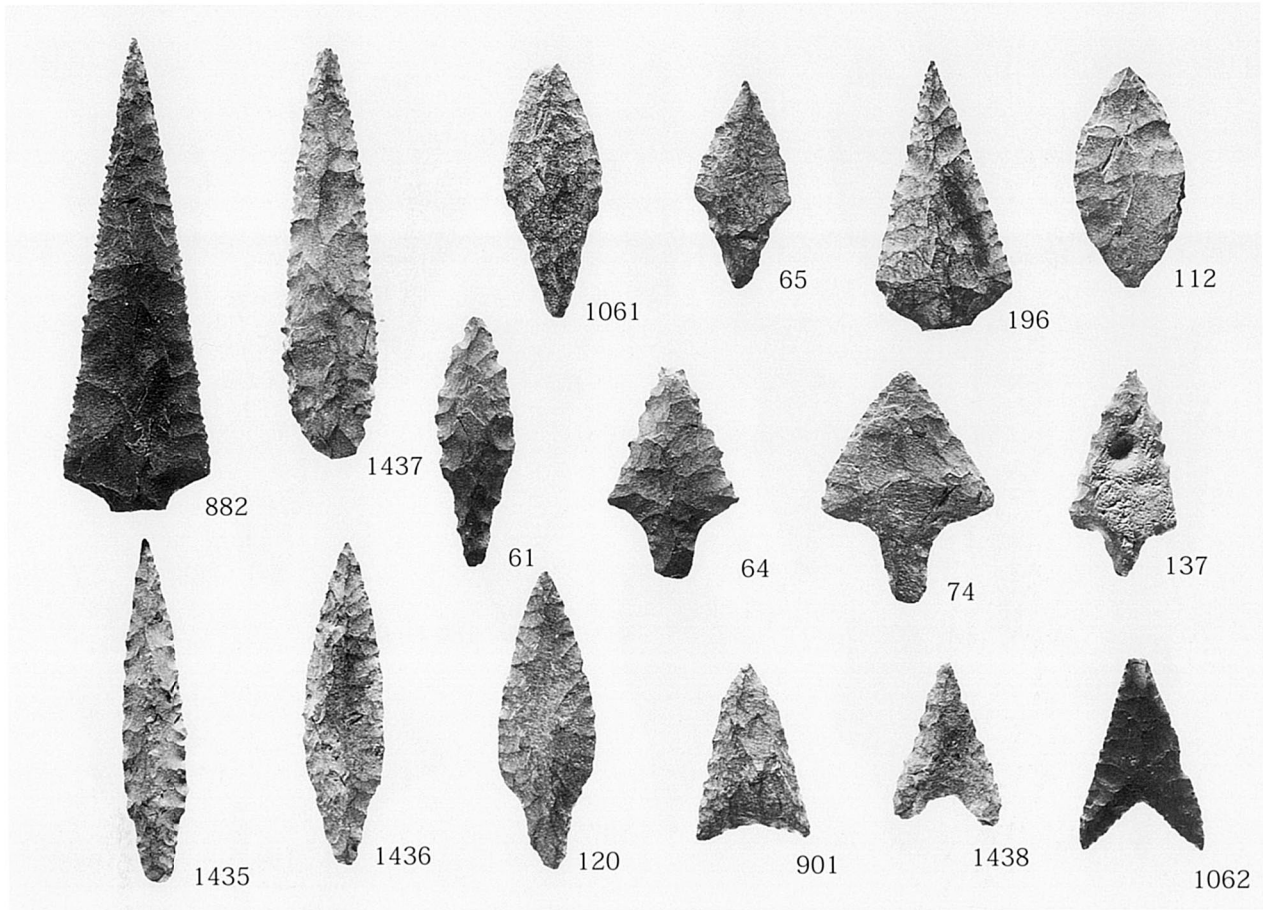


包含層等出土弥生土器 (5)



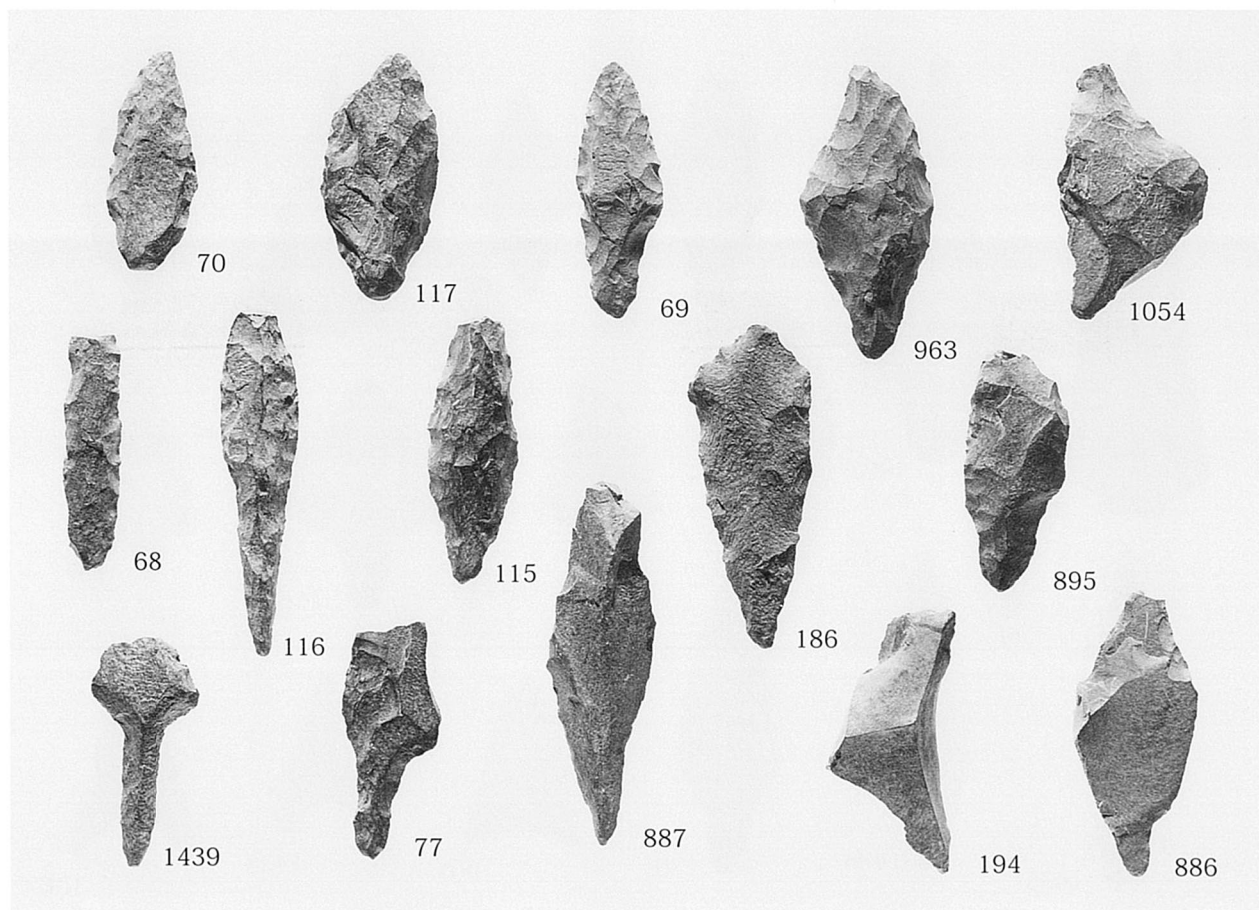






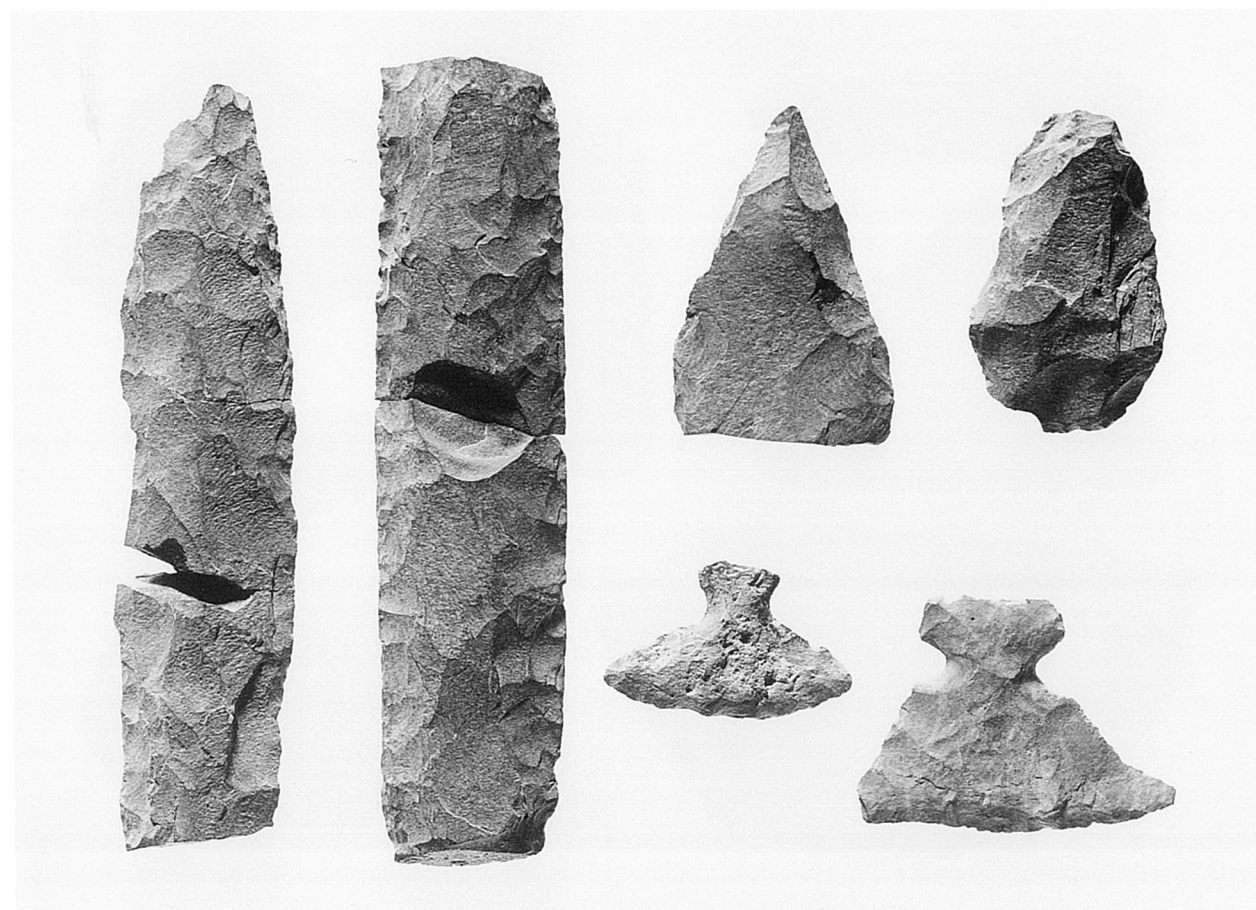
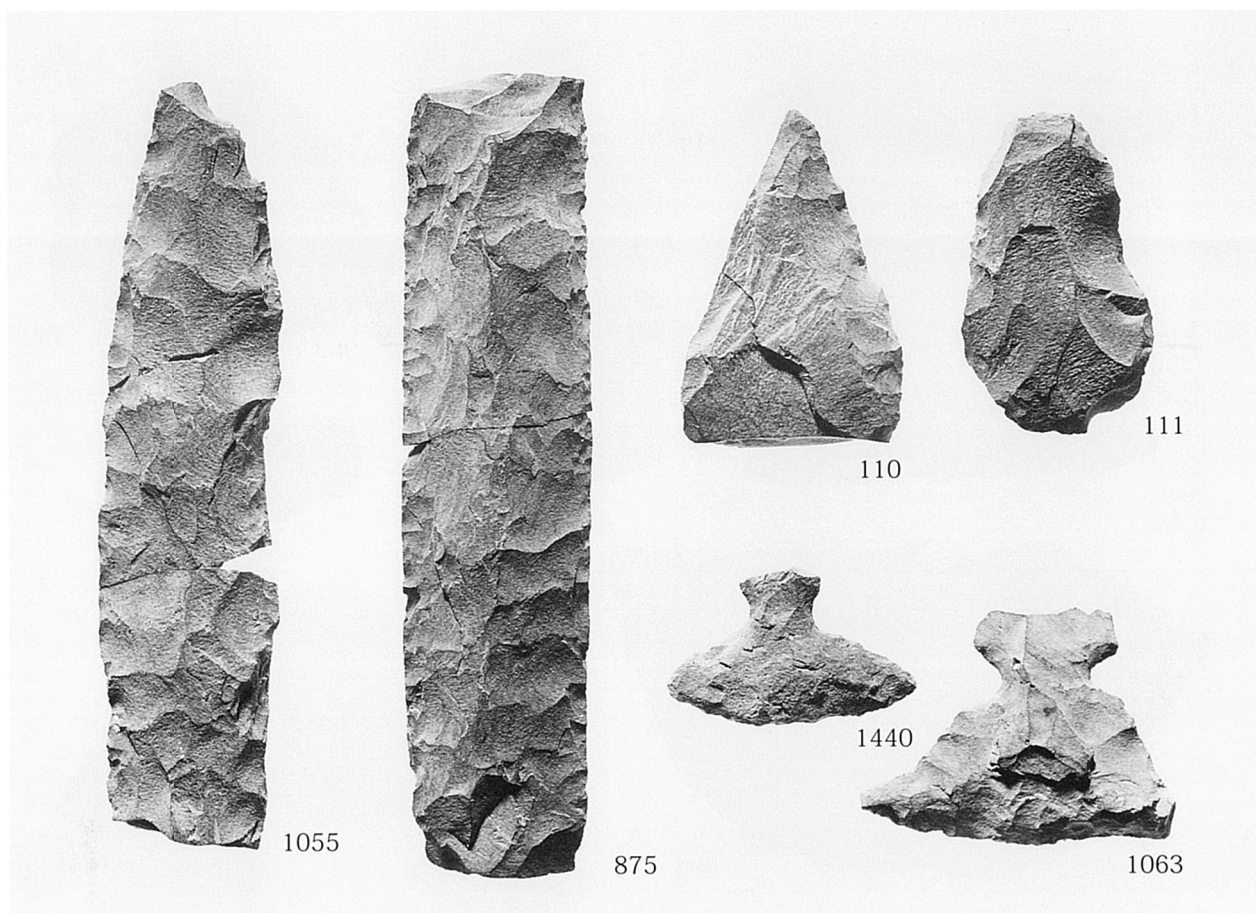
打製石器 (1) 石鏃





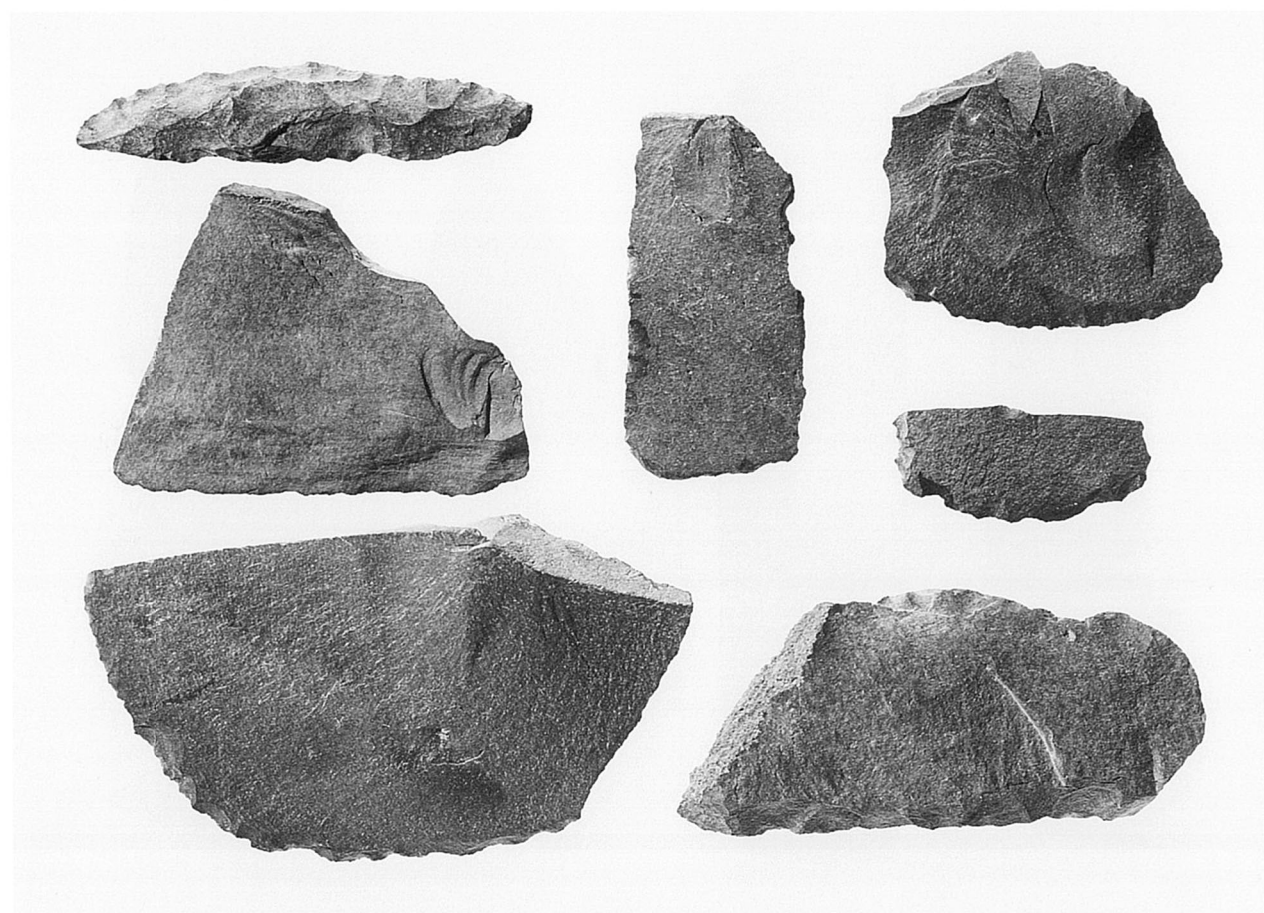
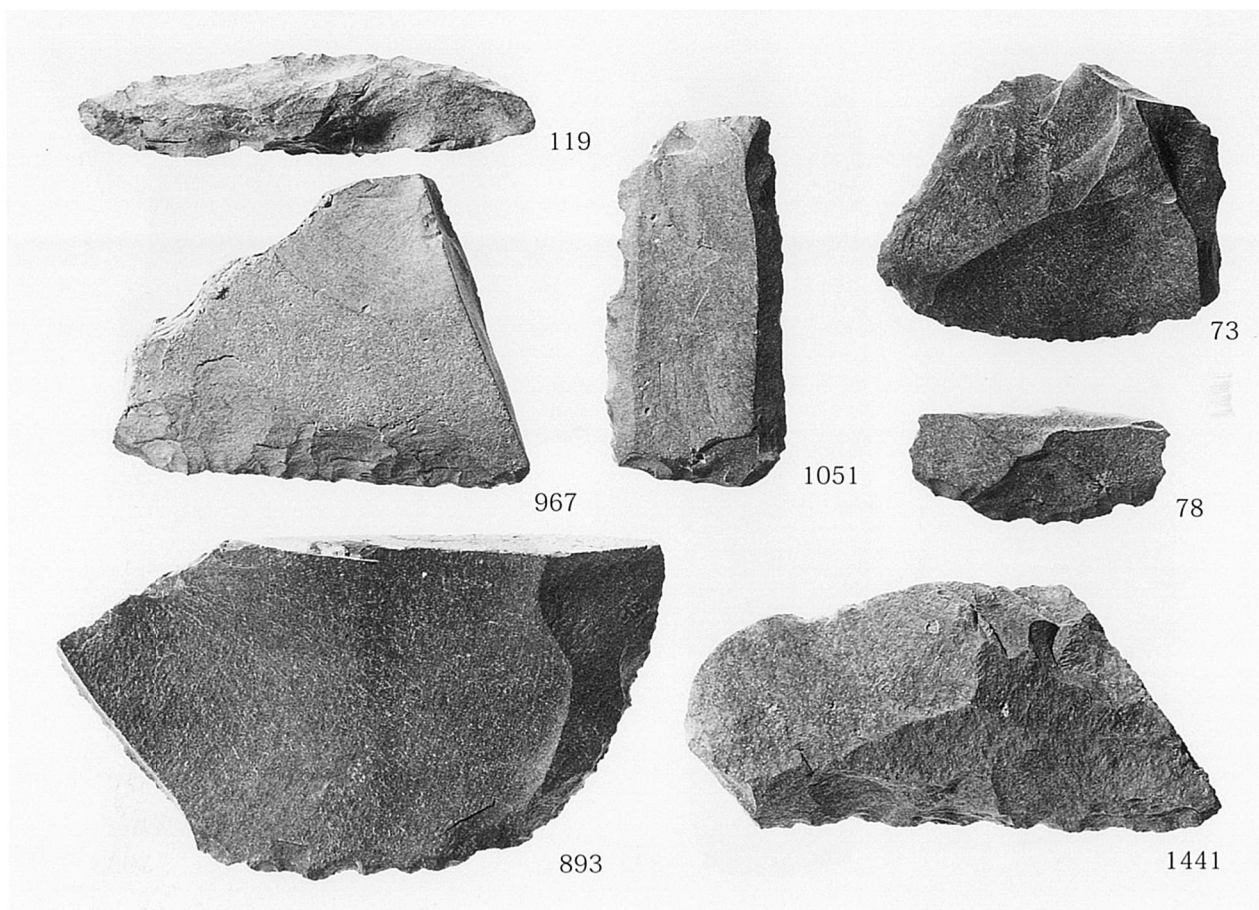
打製石器 (2) 石錐





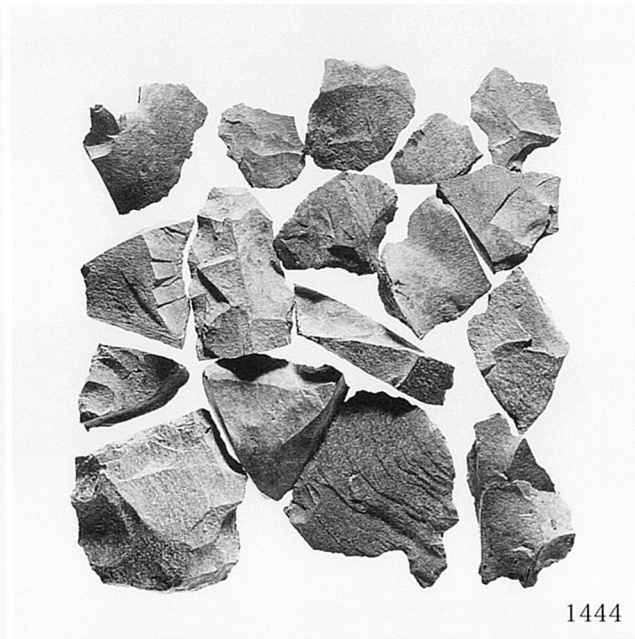
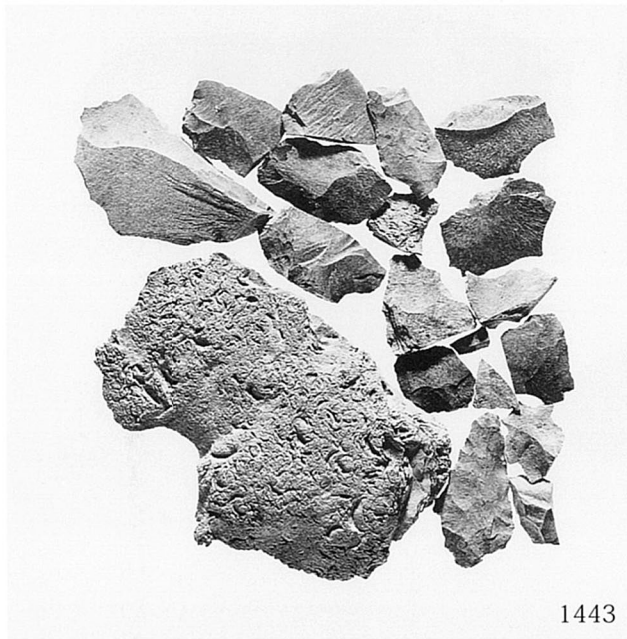
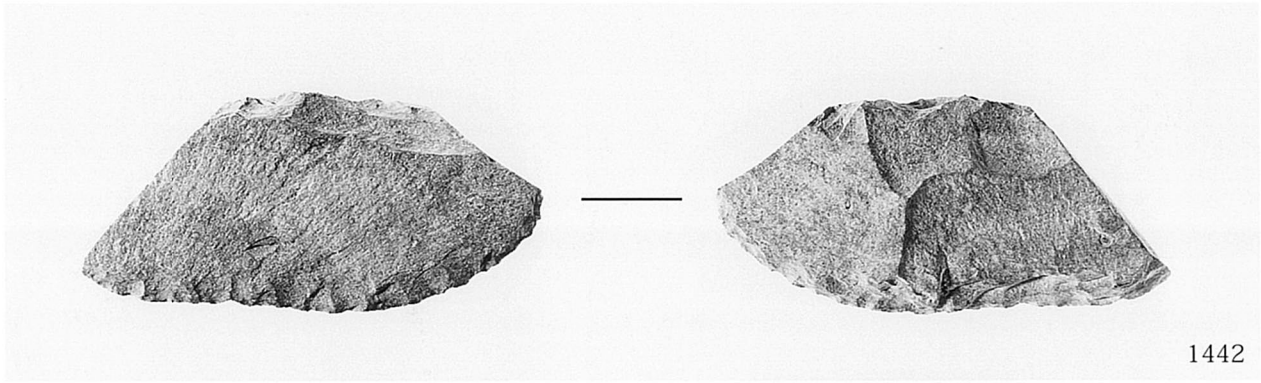
打製石器 (3) 石槍・尖頭器・石匙





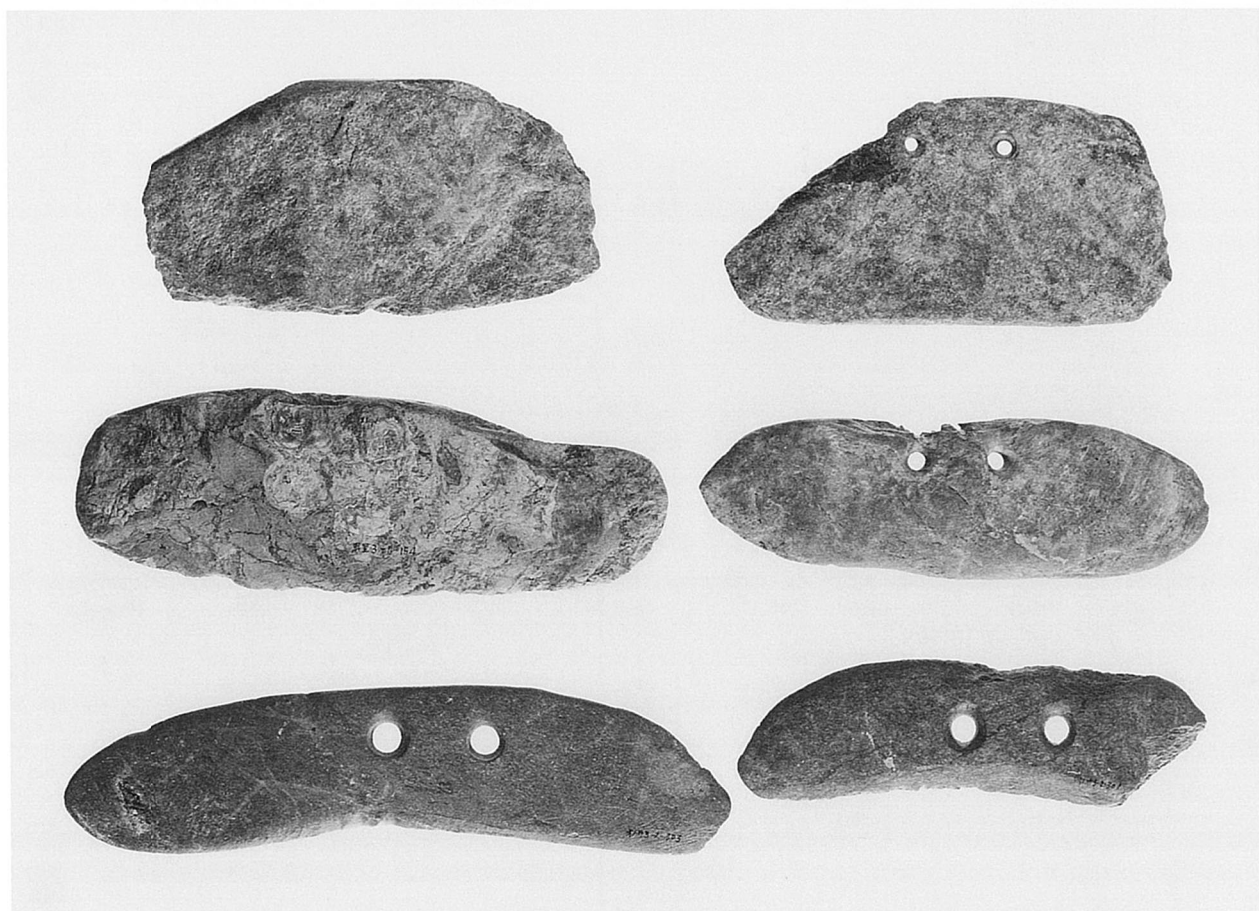
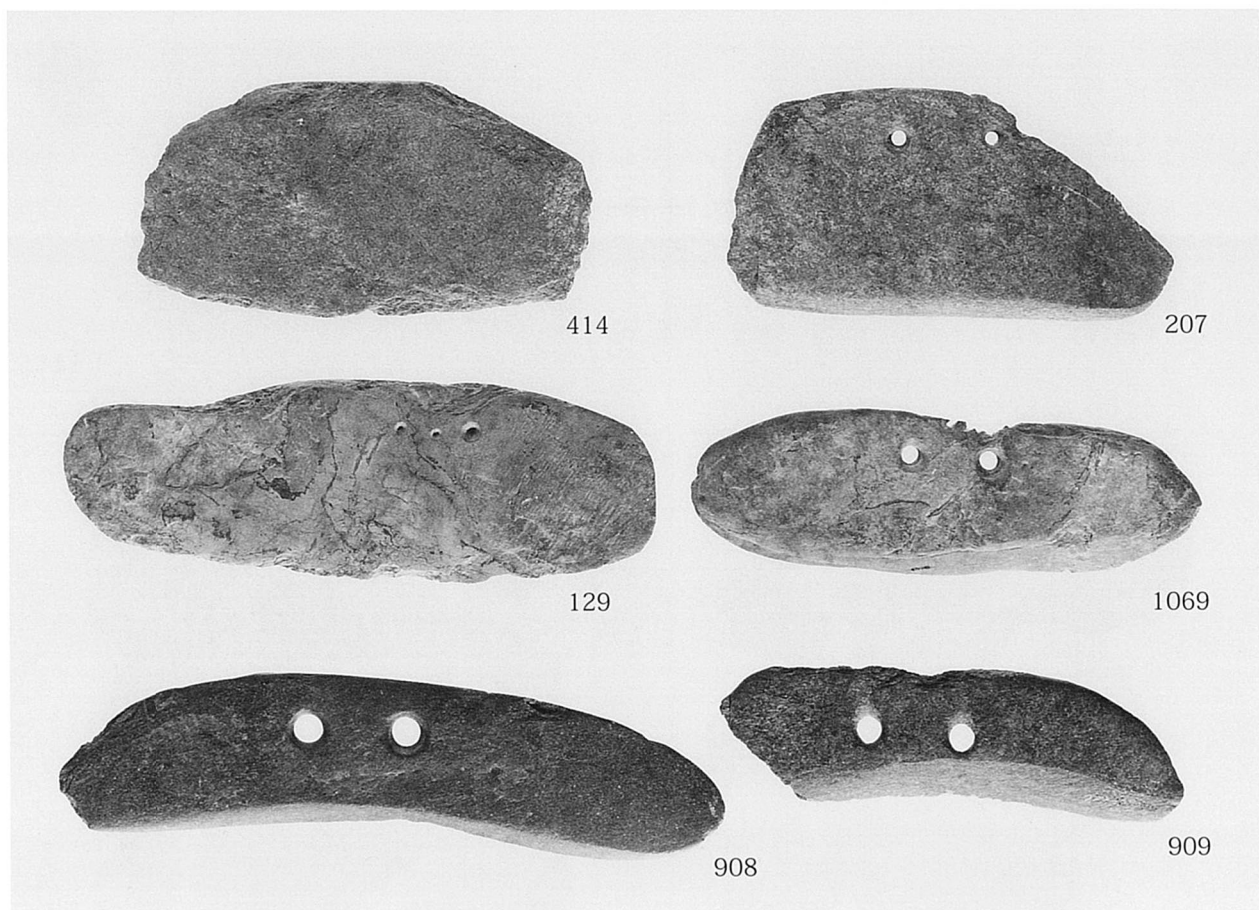
打製石器 (4) 石小刀・スクレイパー





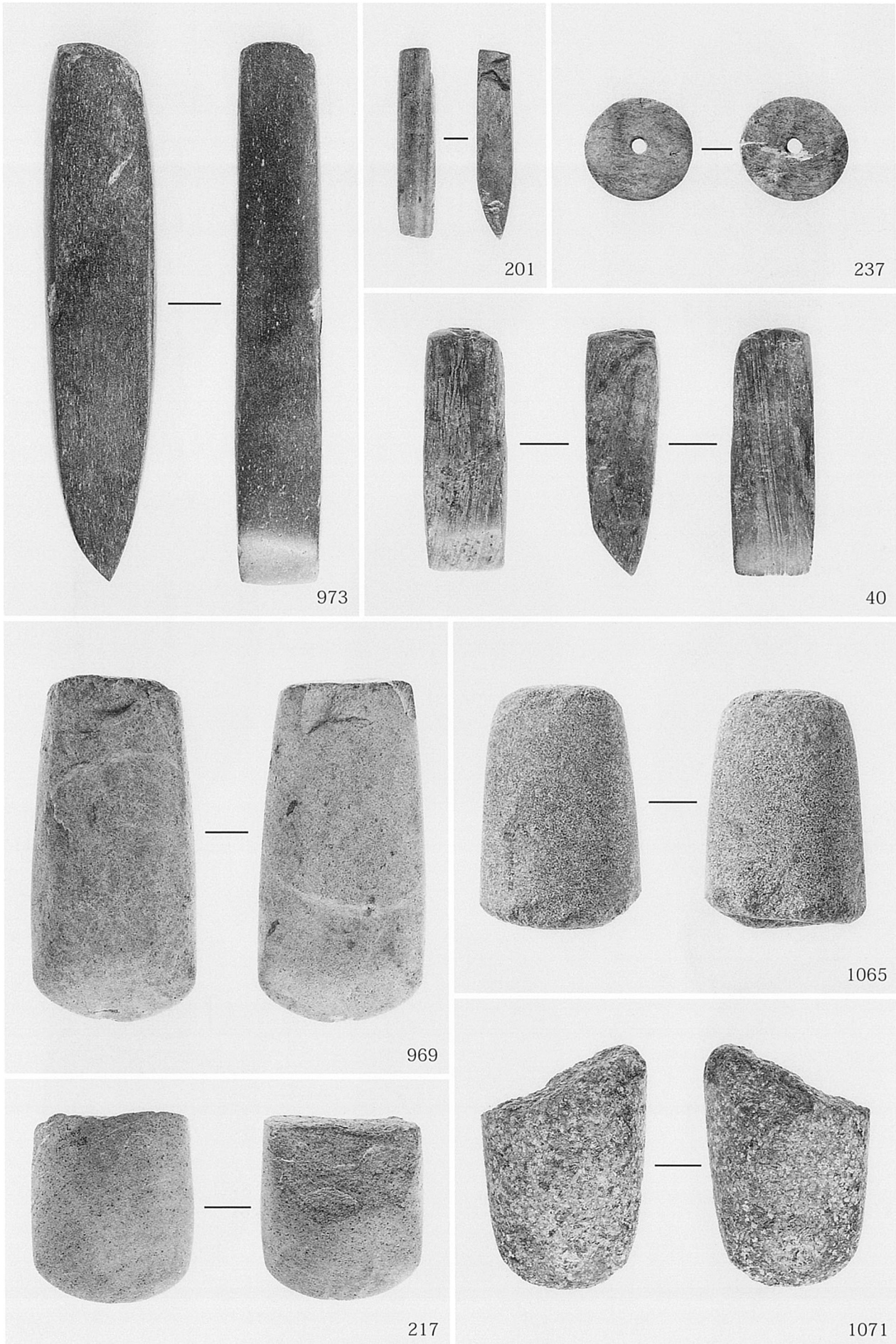
打製石器 (5) 石庖丁・サヌカイト片集合





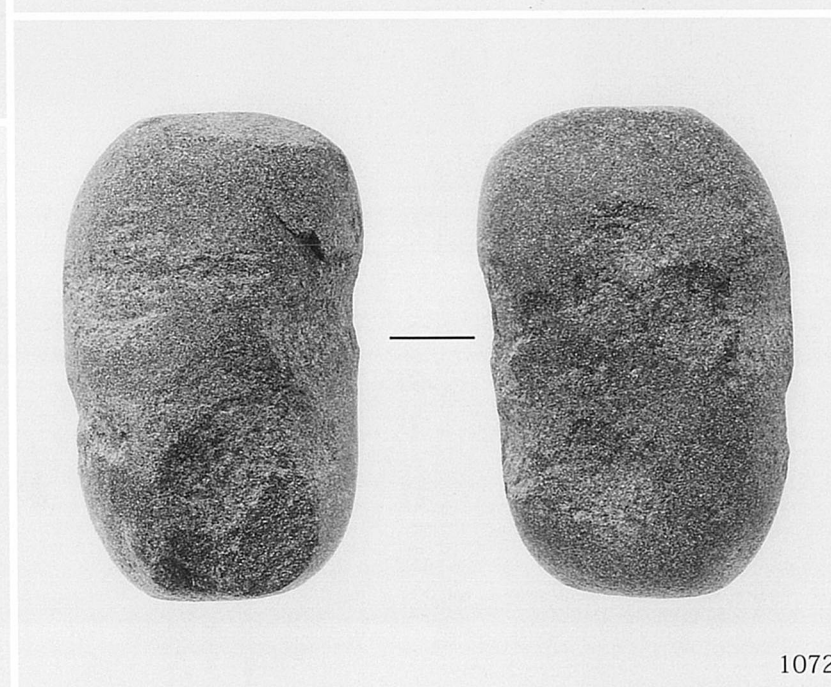
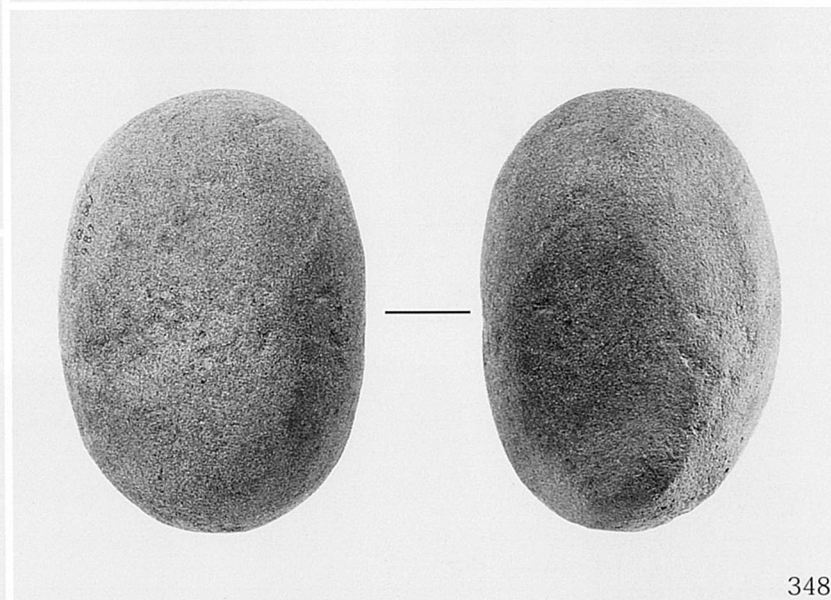
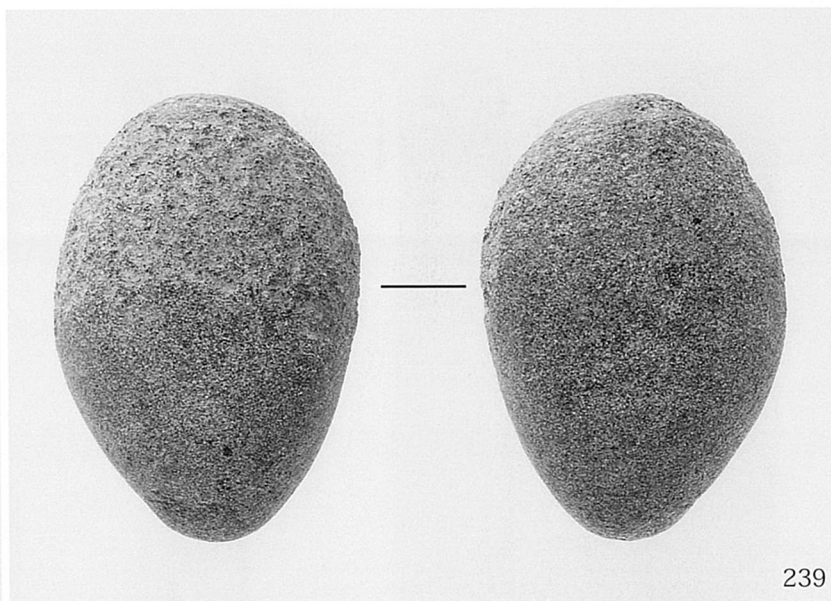
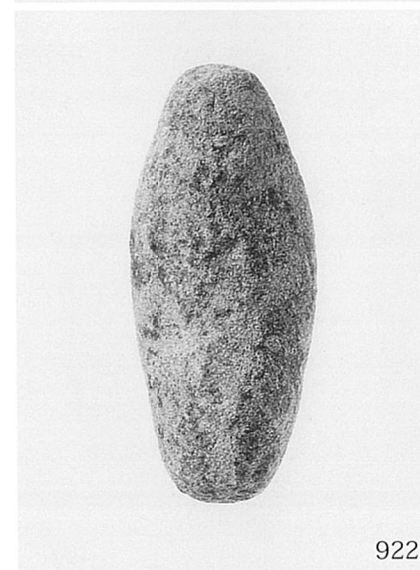
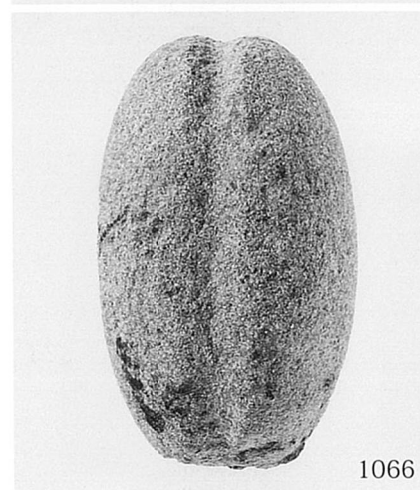
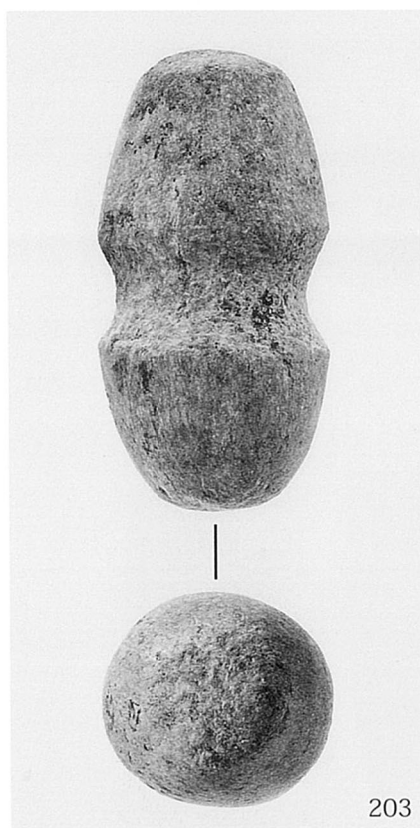
磨製石器 (1) 石庖丁



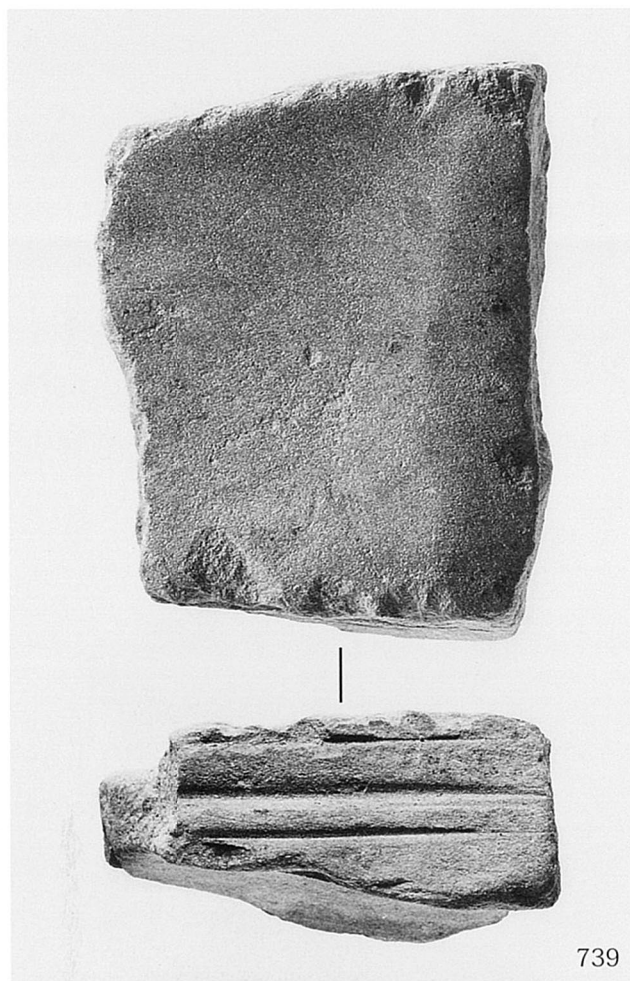


磨製石器 (2) 石斧類



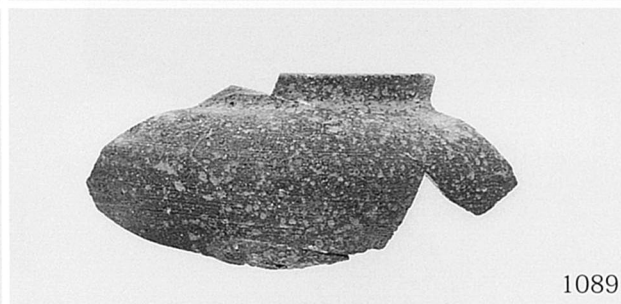
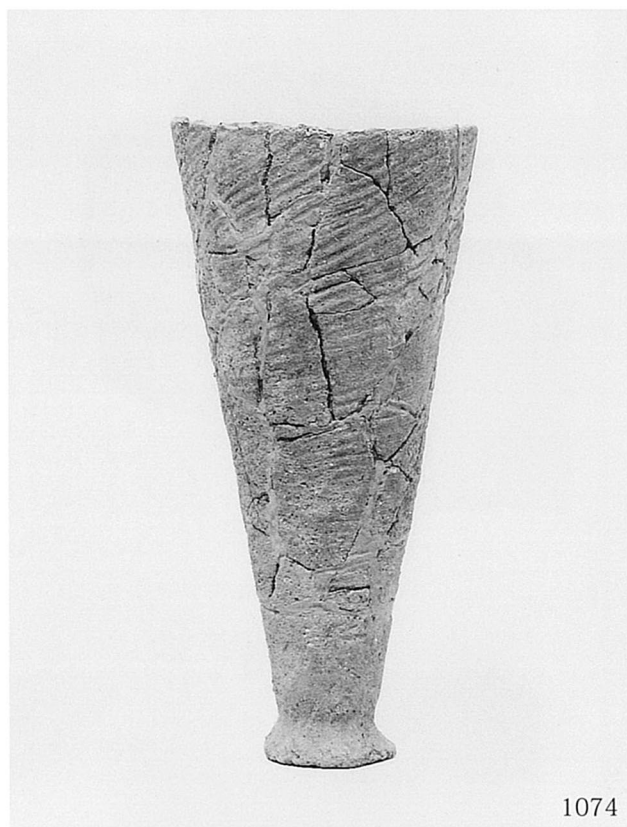






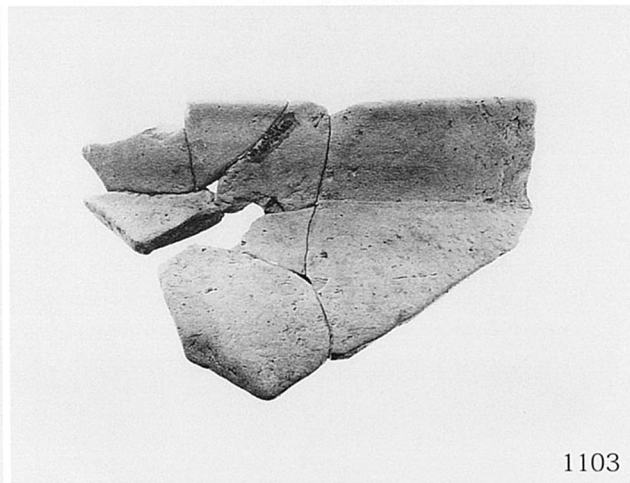
磨製石器 (4) 砥石・台石類



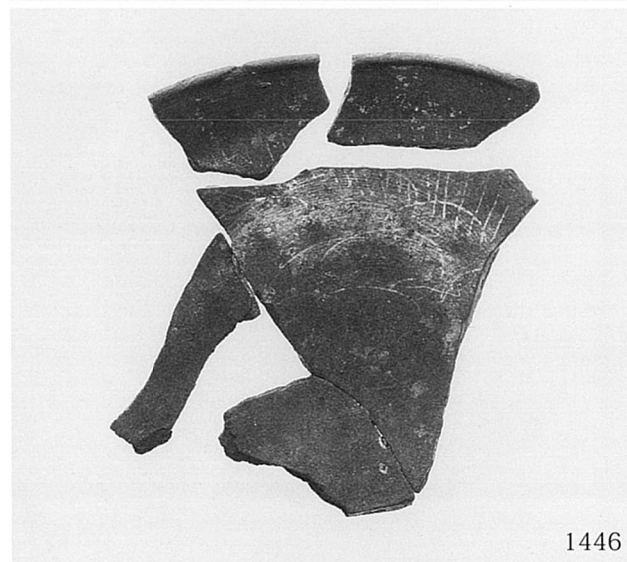


製塩土器 (古墳時代)、遺構出土古代土器 (1)













1145・1147～1152

土師器

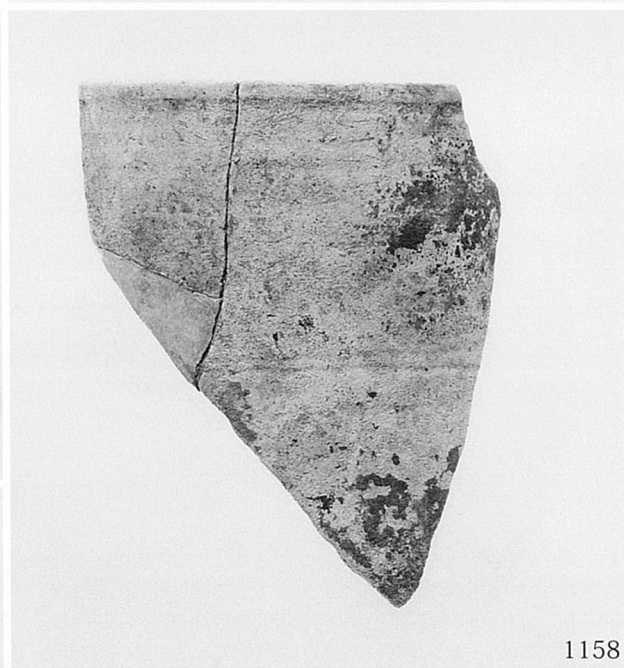


1126～1128・1131・1132・1134・1135・1137～1143

遺構出土古代土器 (4) 土坑 910001

須恵器









1170



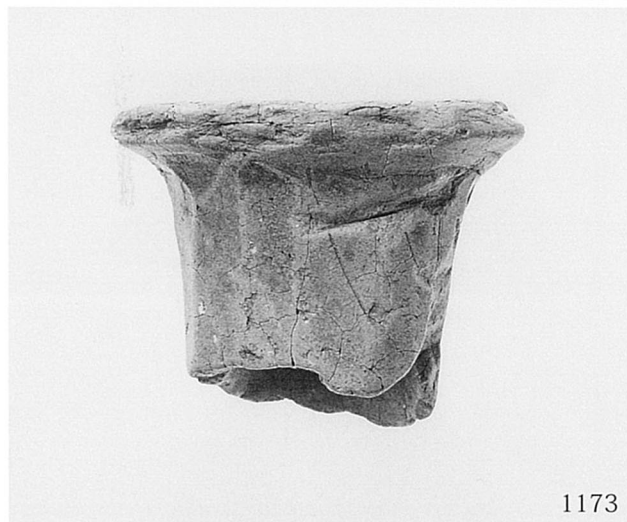
1171



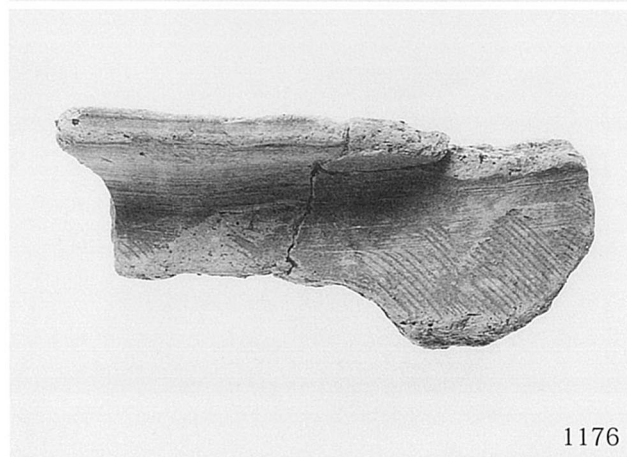
1169



1168



1173

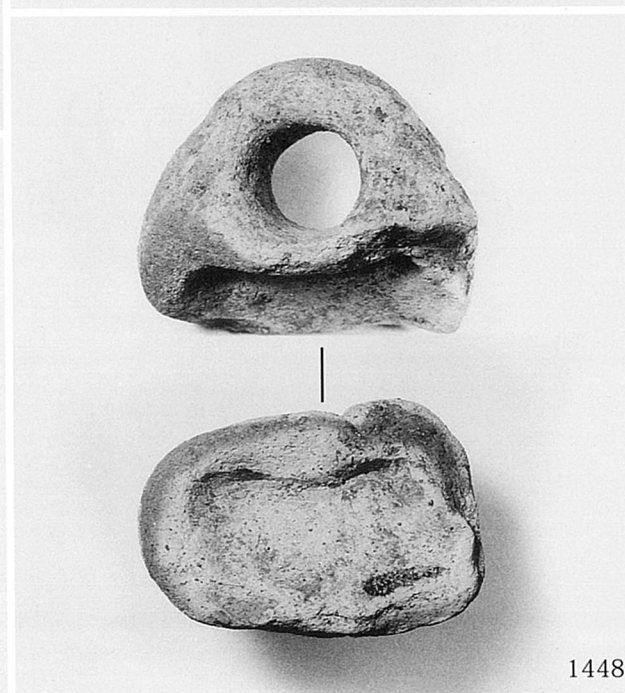
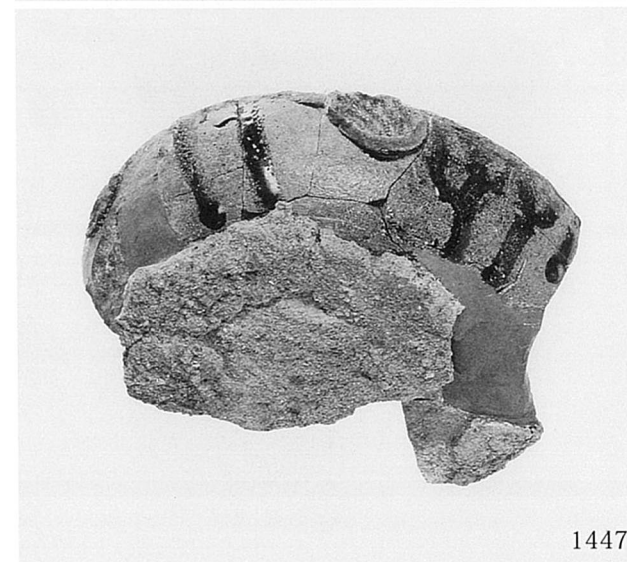
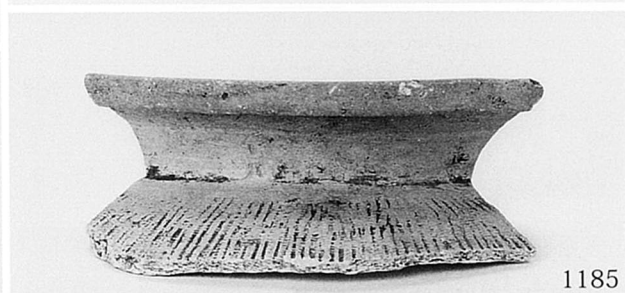


1176

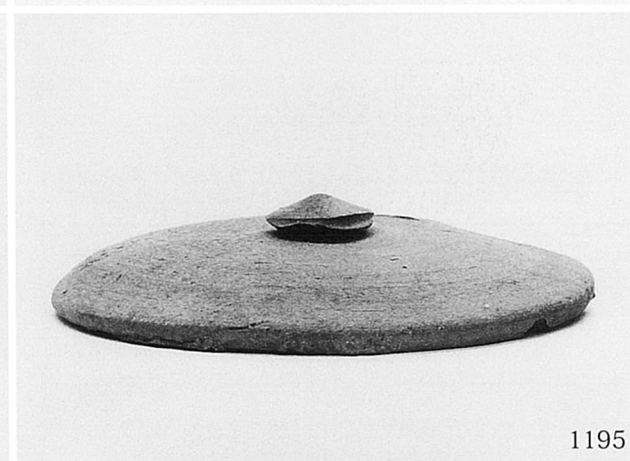
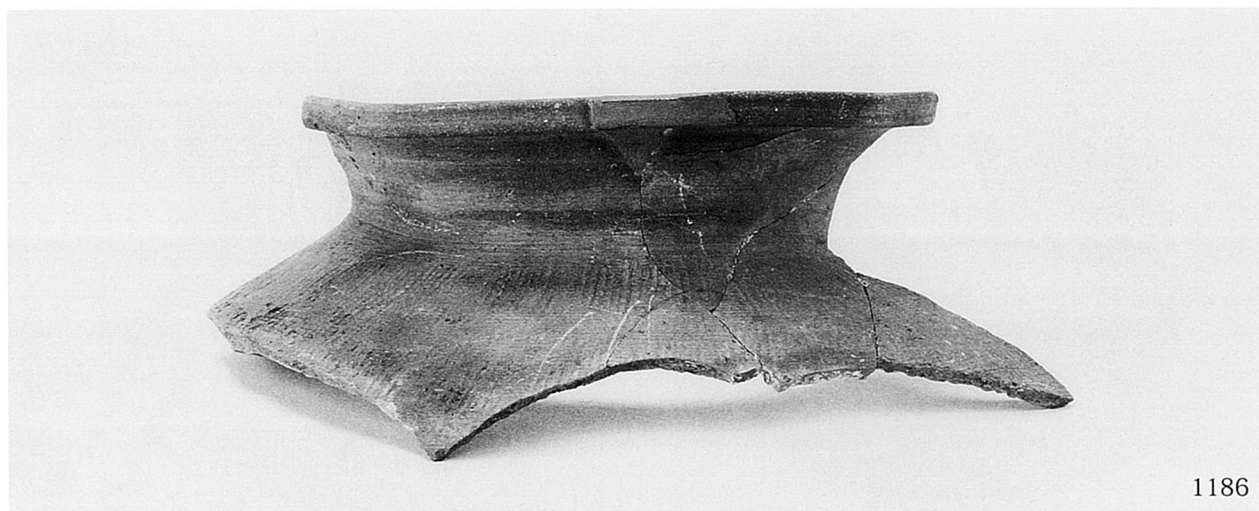


1177



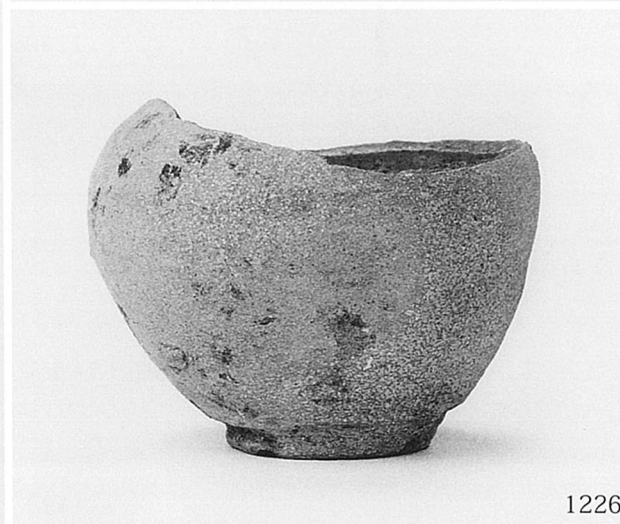
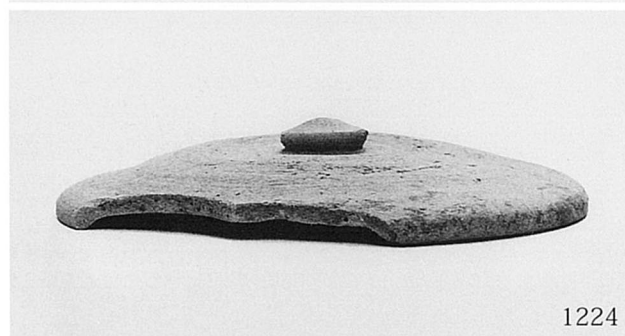
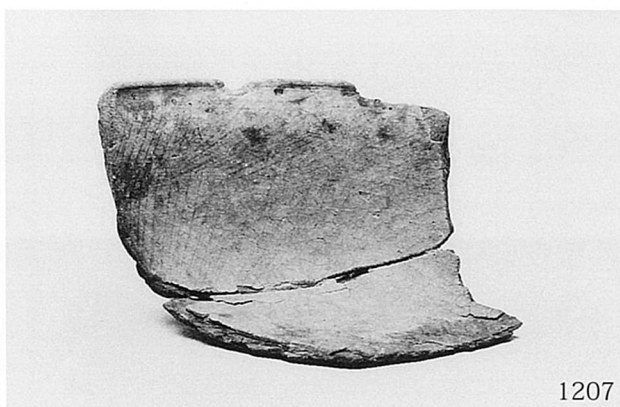




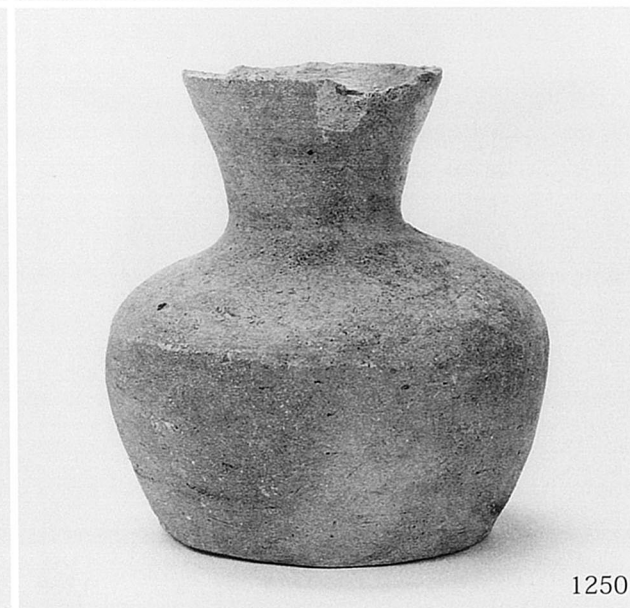
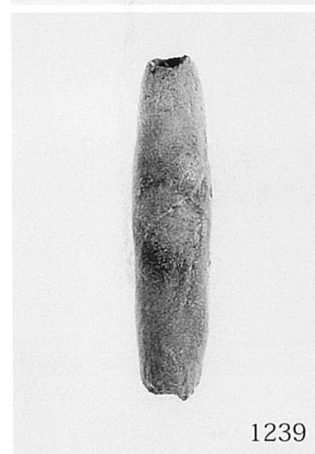


包含層出土古代土器 (2)

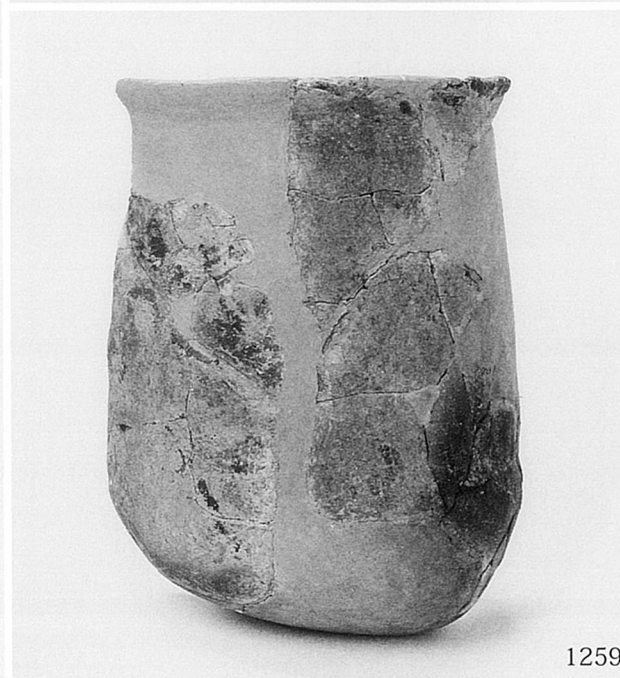
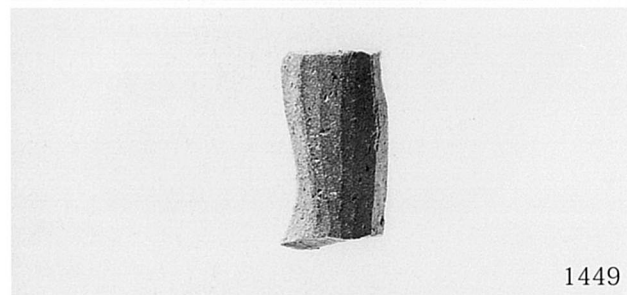
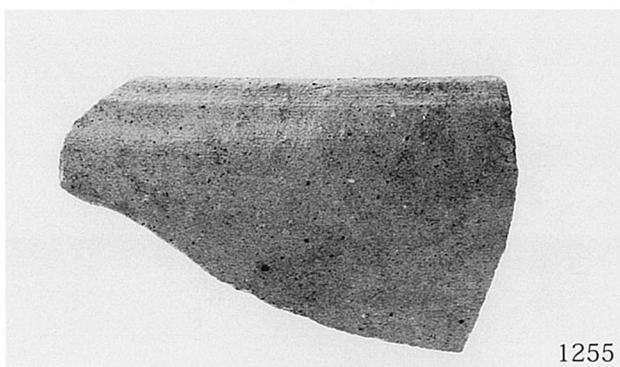




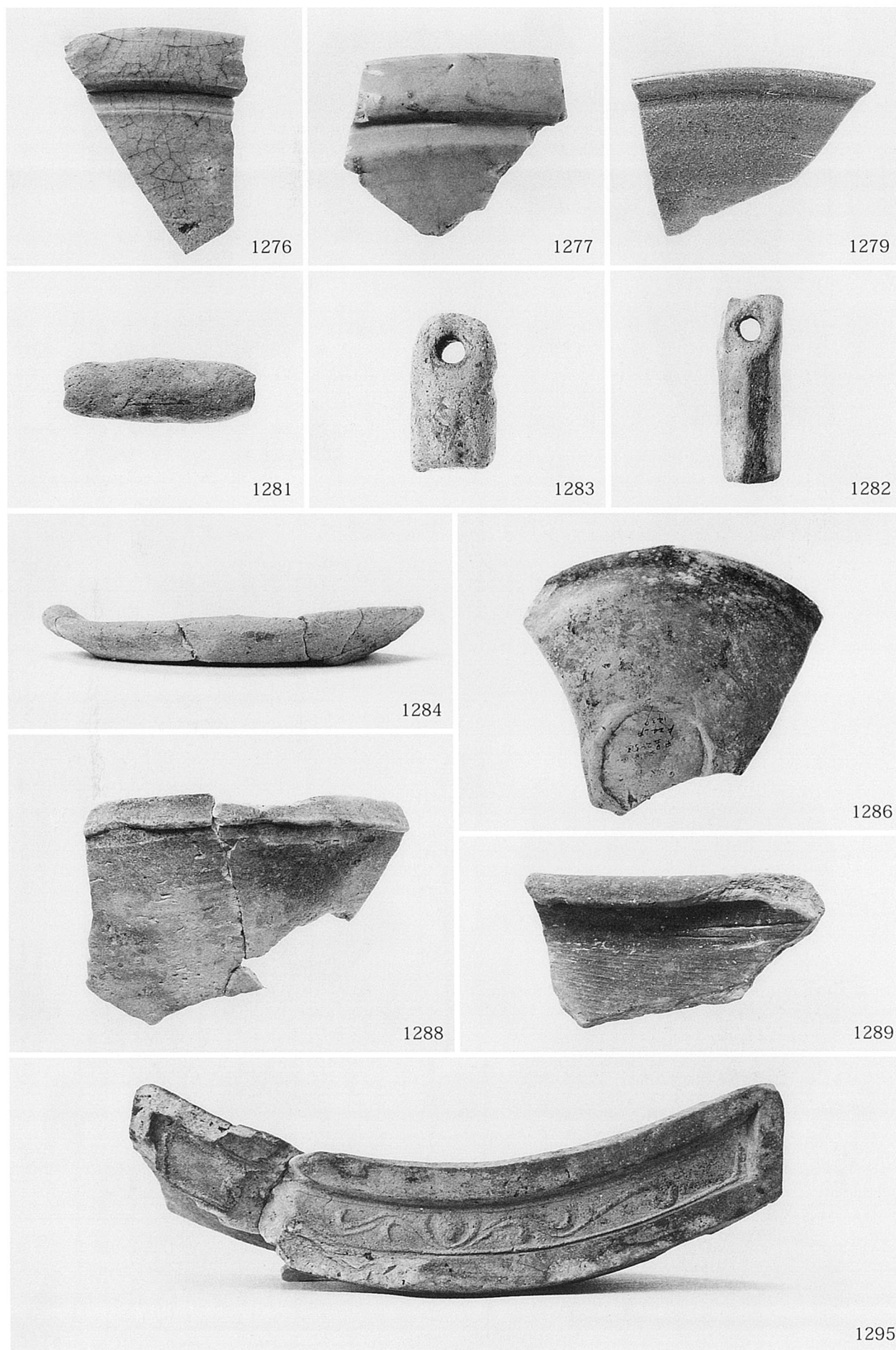






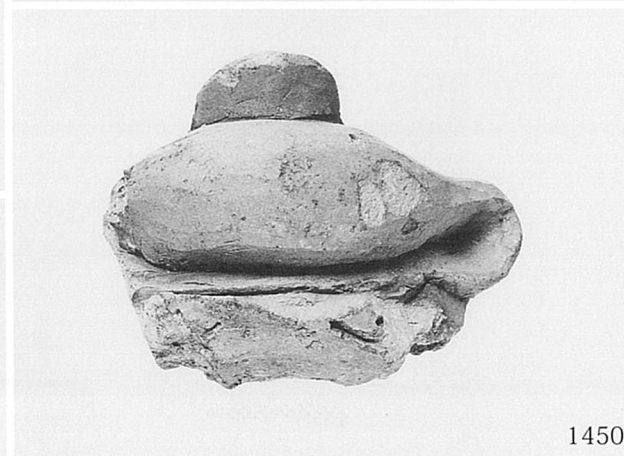




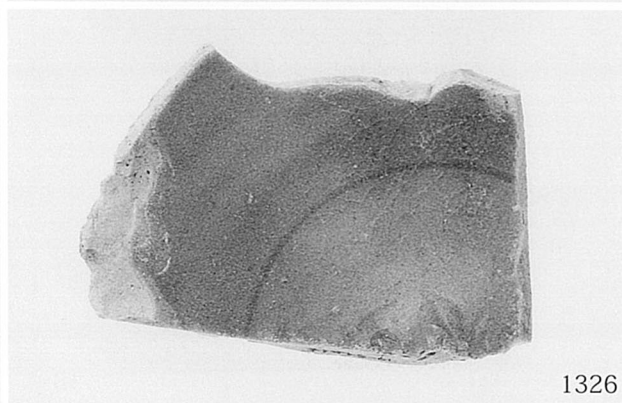
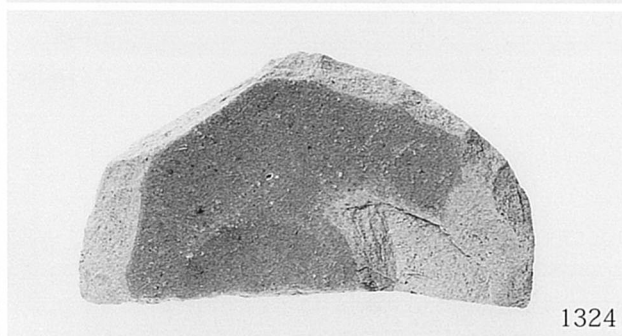
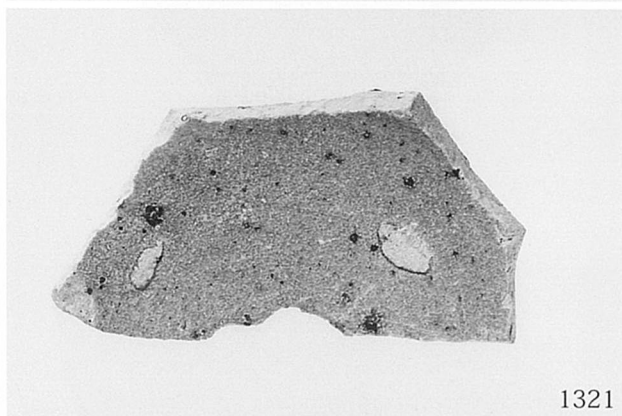
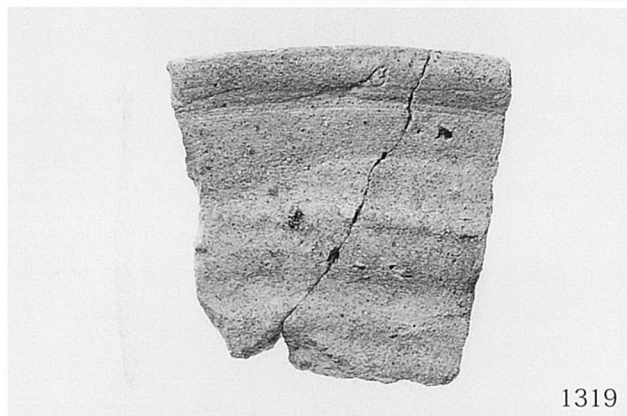
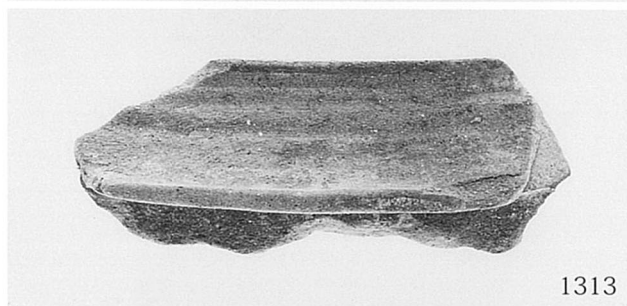


北半部出土中世遺物 (1)











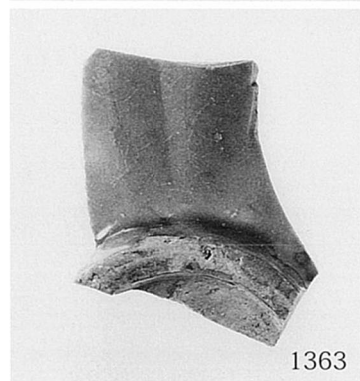






北半部出土中世遺物 (5)









1367



1368



1392



1393



1370・1371・1373・1374・1376～1378・1380・1382・1388～1390

南半部出土中世遺物 (2)







(財)大阪府文化財センター調査報告書 第127集

## 男 里 遺 跡

—写真図版編—

主要地方道泉佐野岩出線（都市計画道路泉南岩出線）建設に伴う  
埋蔵文化財発掘調査報告書

発行年月日 / 2005年 2月28日

編集・発行 / 財団法人 大阪府文化財センター  
大阪府堺市竹城台 3丁21番 4号

印刷・製本 / 株式会社 明新社  
奈良県奈良市南京終町 3丁目464番地