

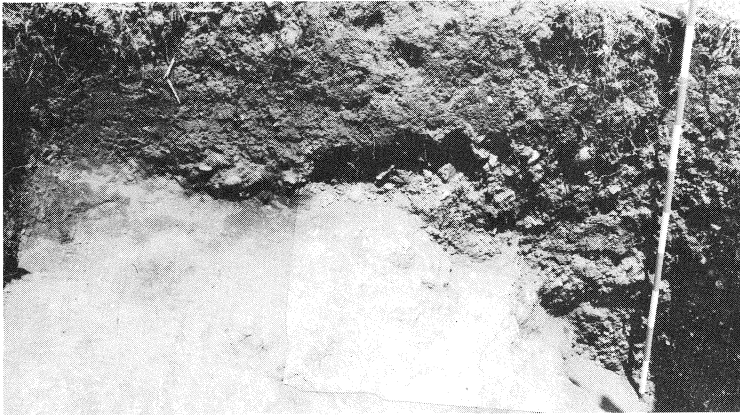
圖 版



遺跡遠景(西より)



遺跡近景(南東より)



A区 土層断面(北壁)



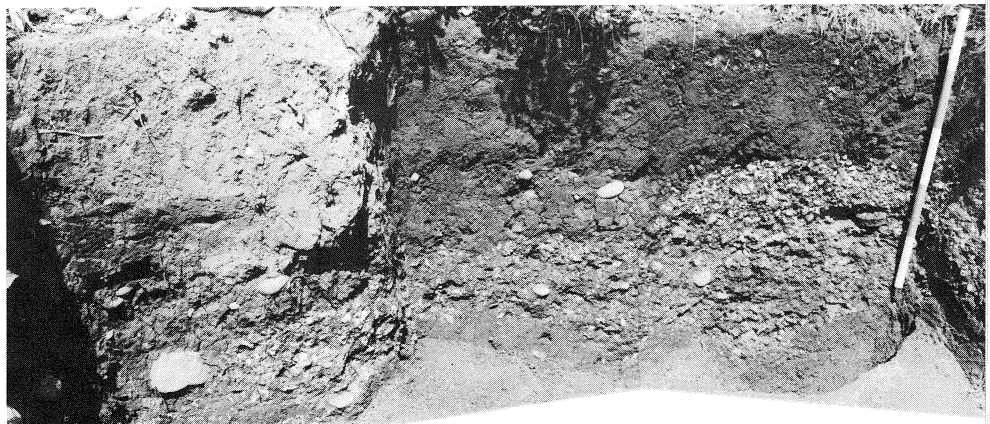
A区 土層断面(東壁)



B区 土層断面(西壁)



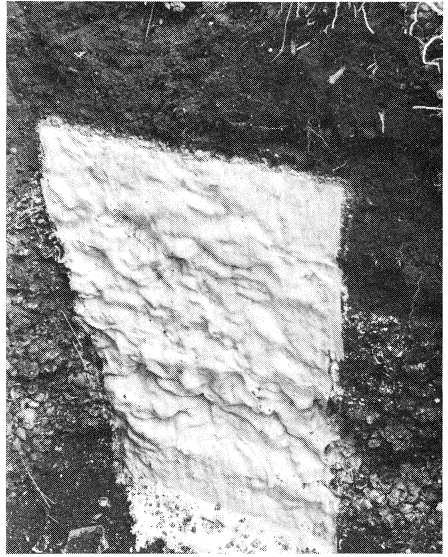
B区 土層断面(北壁)



D区 土層断面(北壁)



C区 II層遺物出土状況



C区 土層転写



C区 III層ウニ集中部



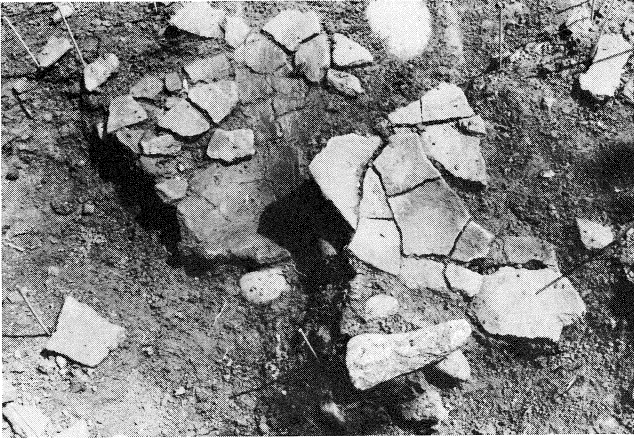
C区 III層遺物出土状況



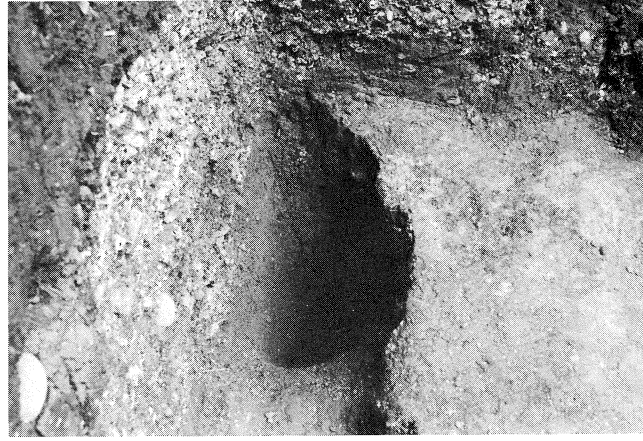
C区 貝層の状況



D区 遺物出土状況

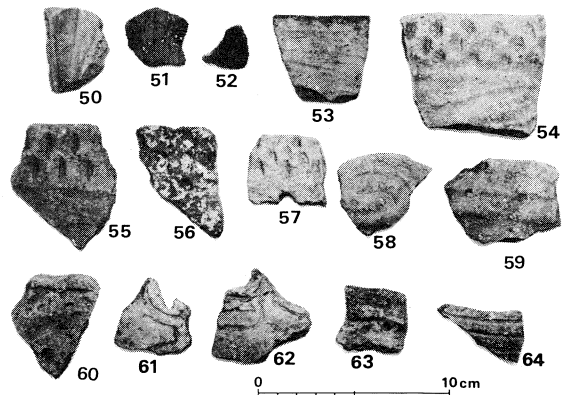
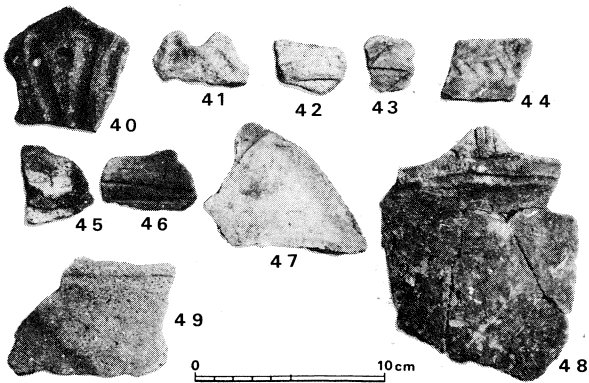
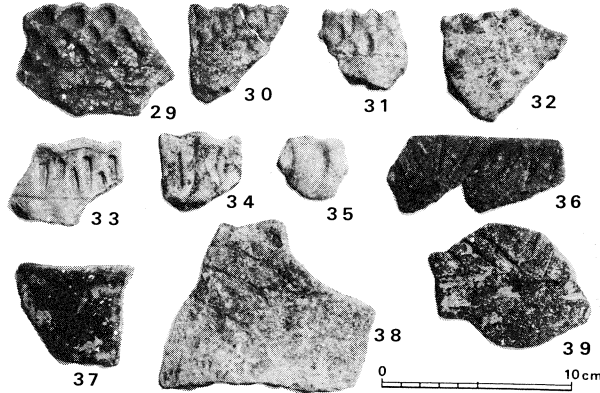
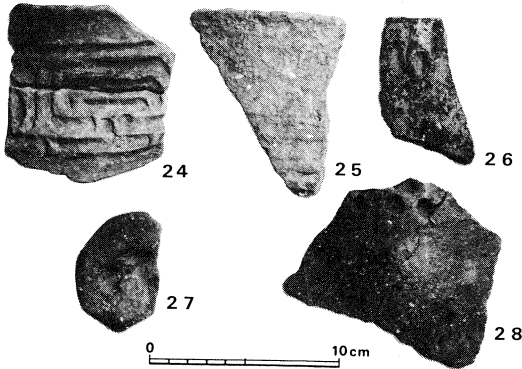
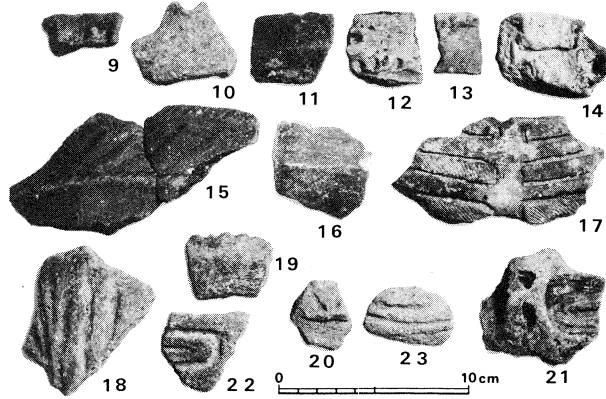
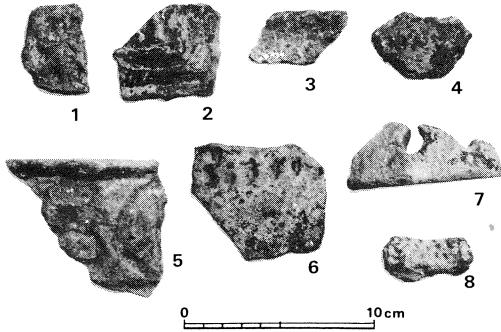


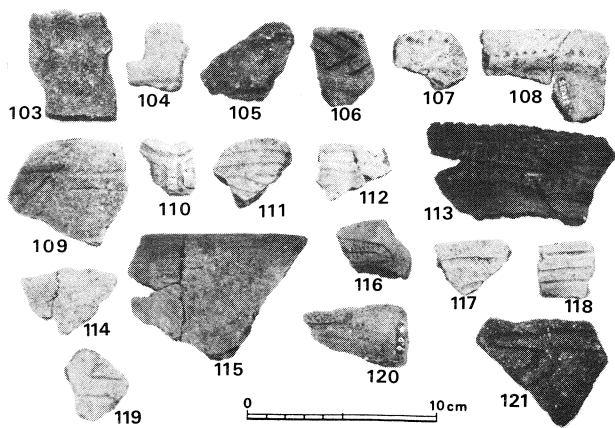
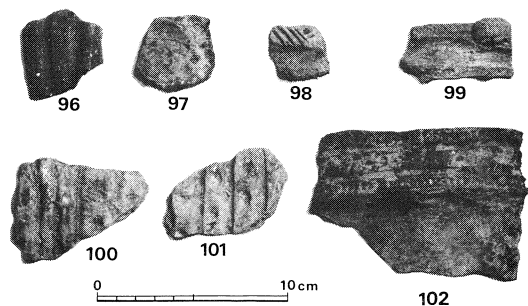
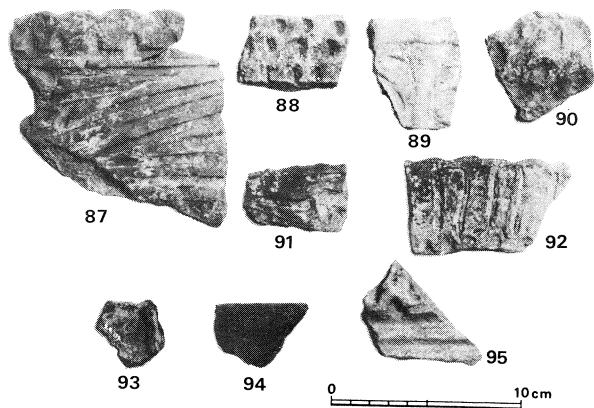
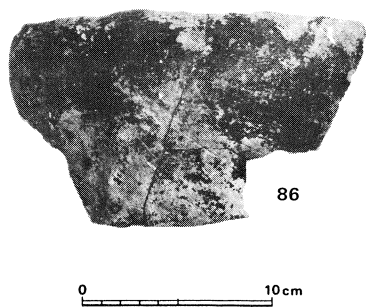
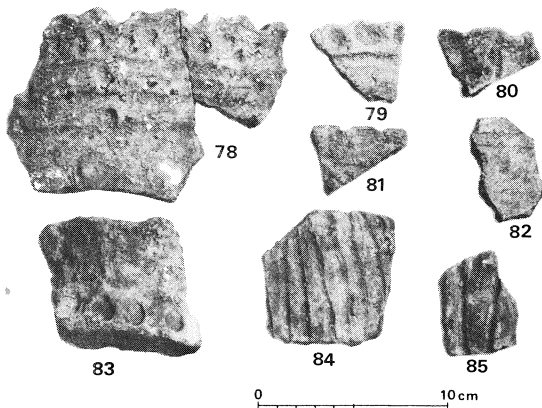
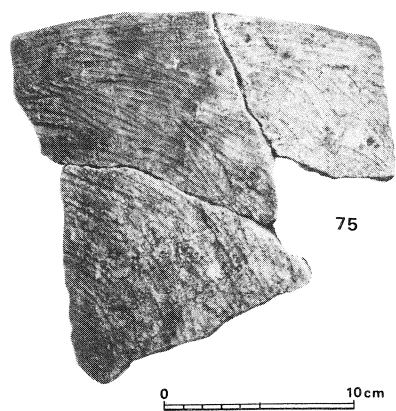
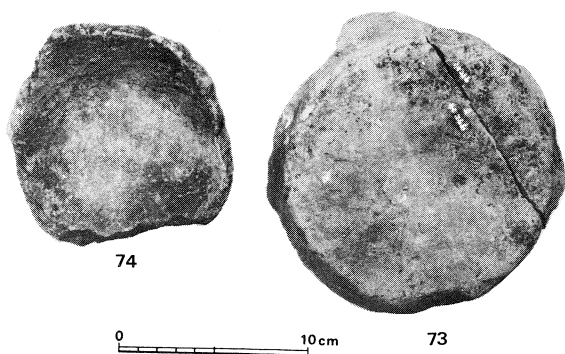
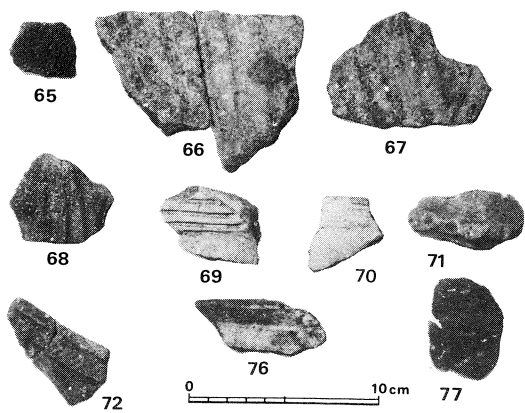
D区 I層遺物出土状況

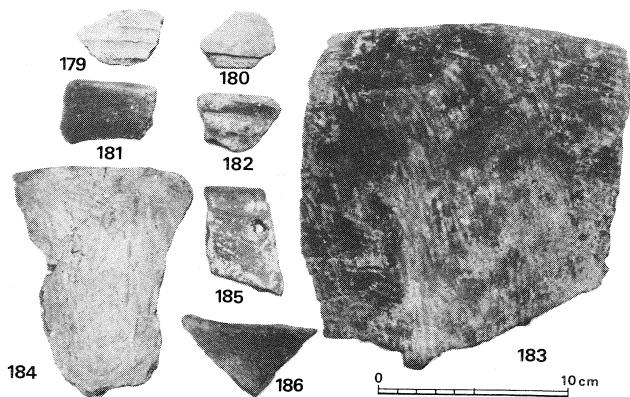
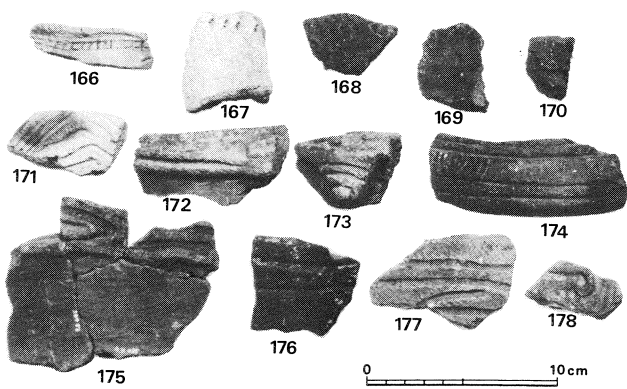
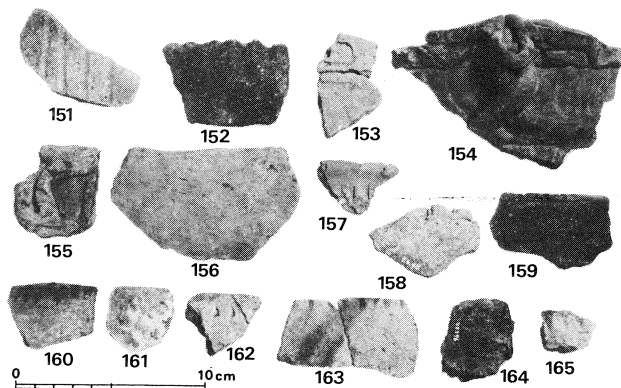
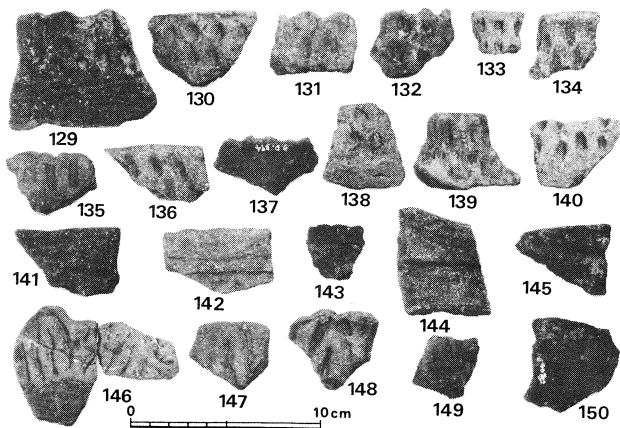
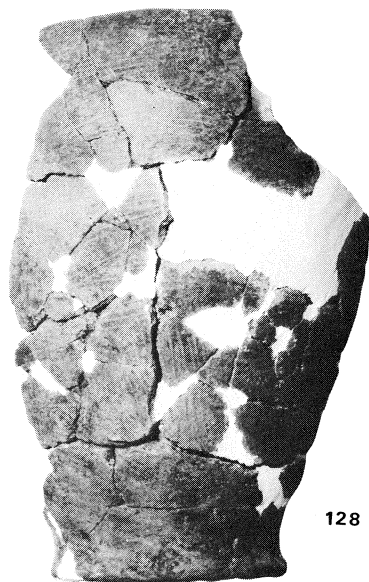
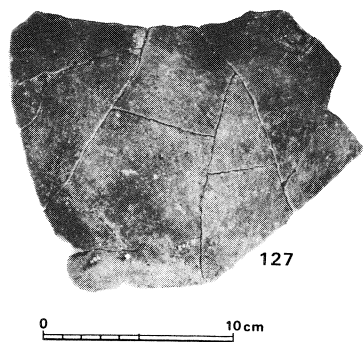
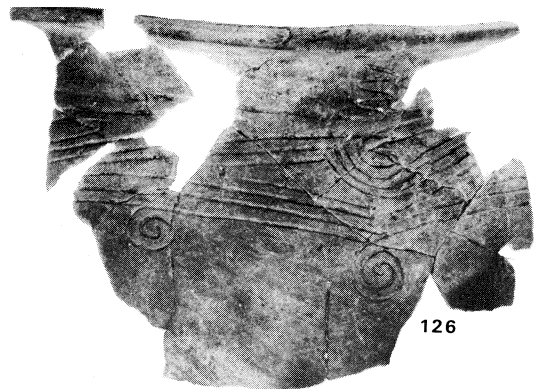
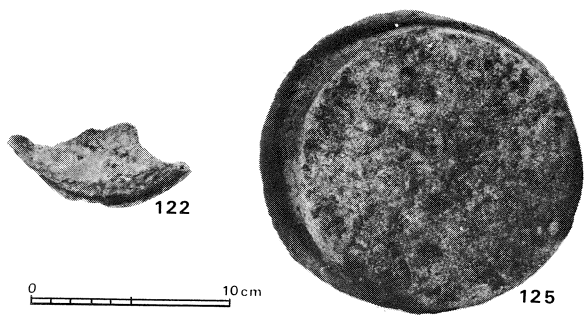


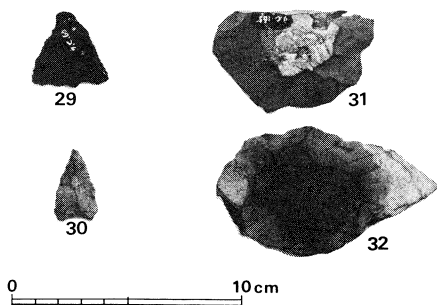
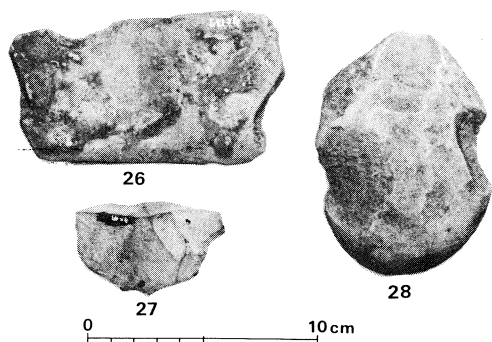
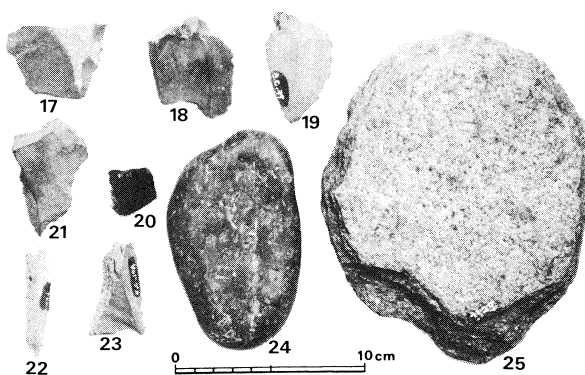
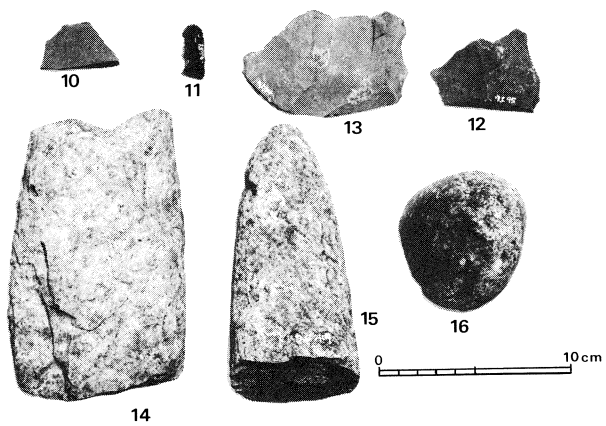
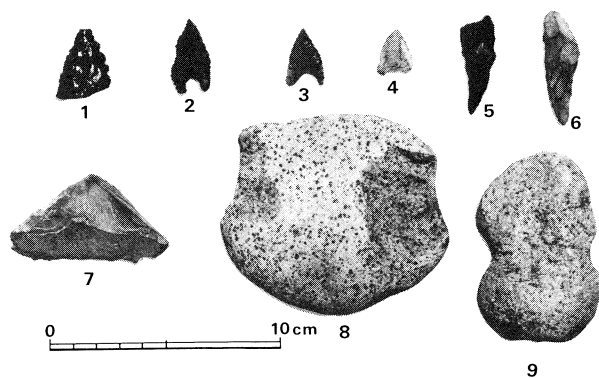
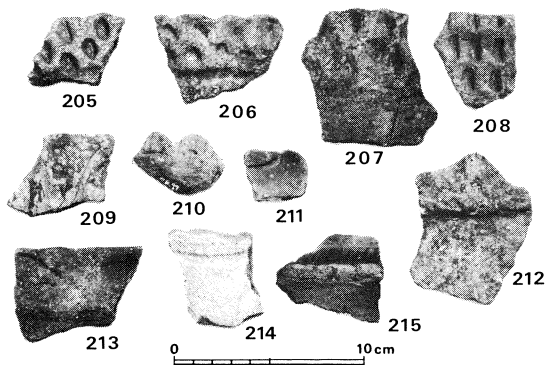
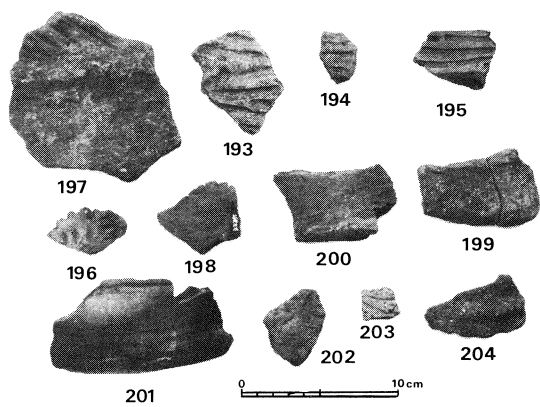
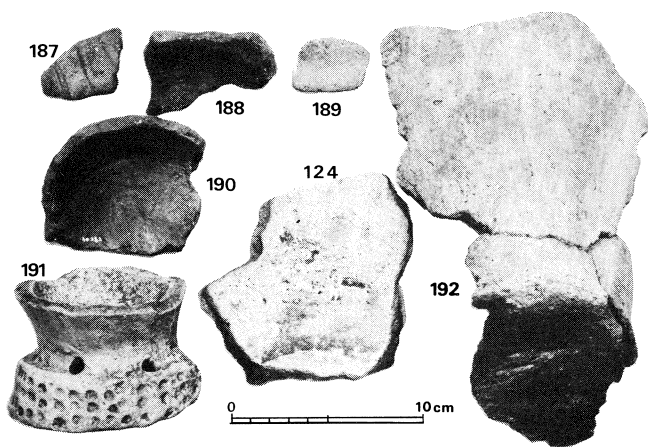
D区 不明土壌

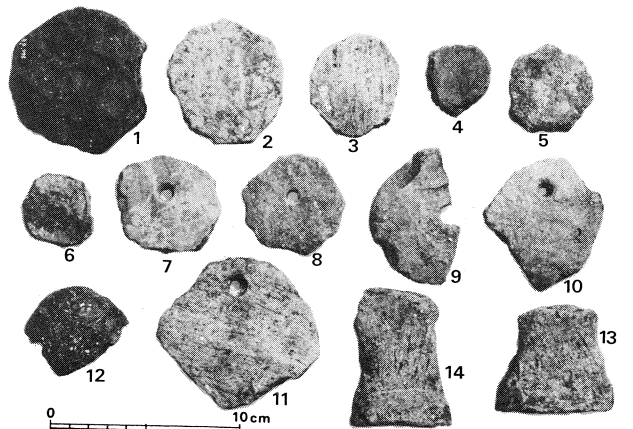
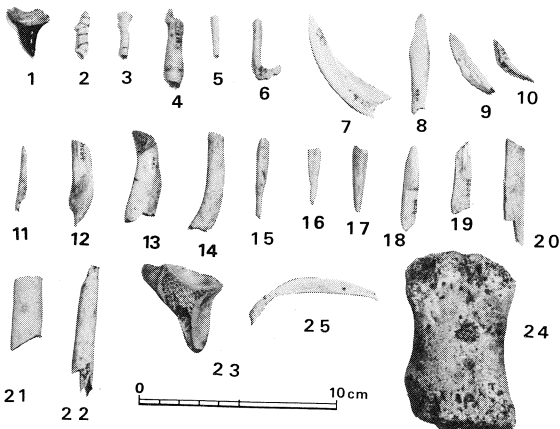
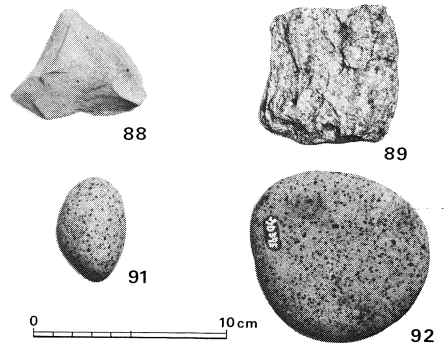
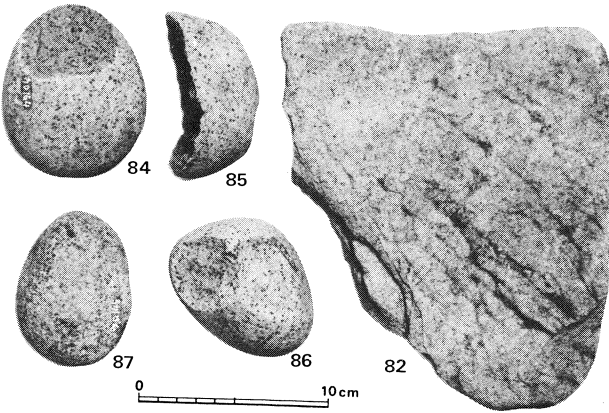
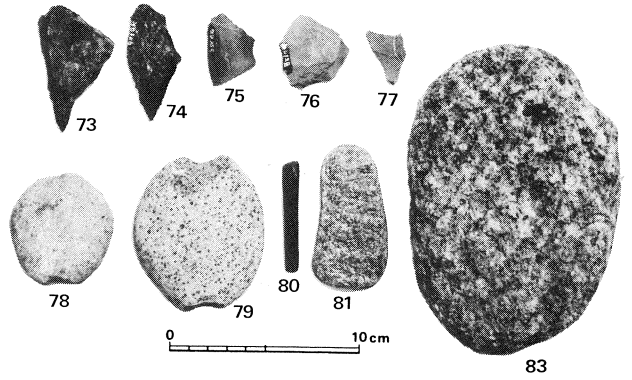
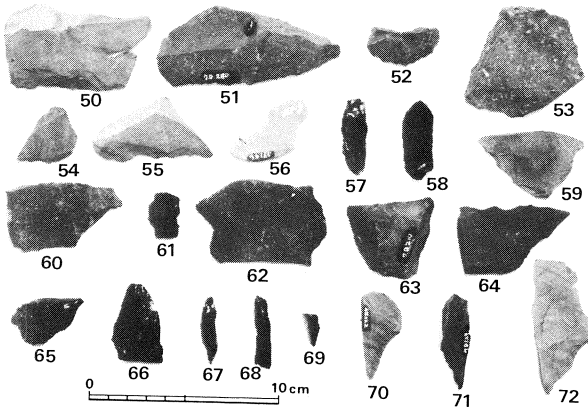
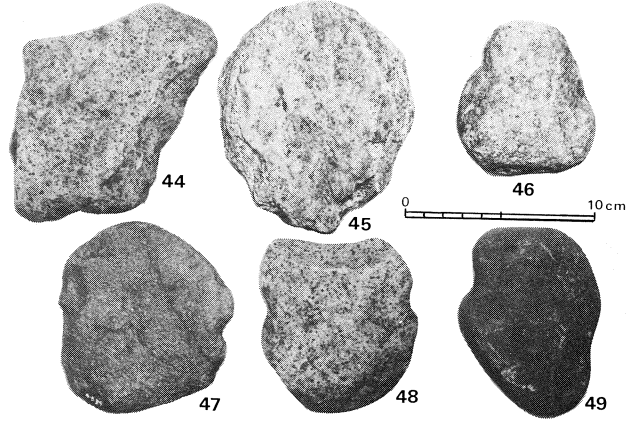
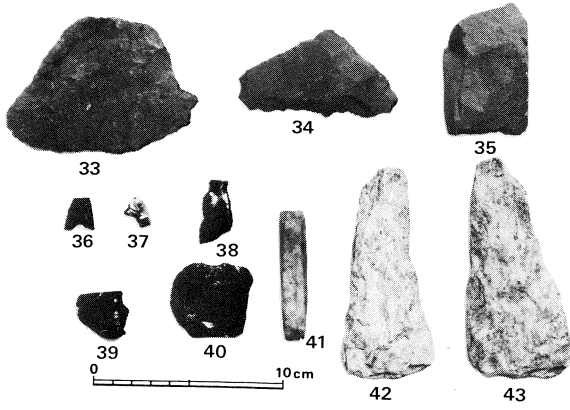
出土遺物(番号は挿図の遺物番号と一致)

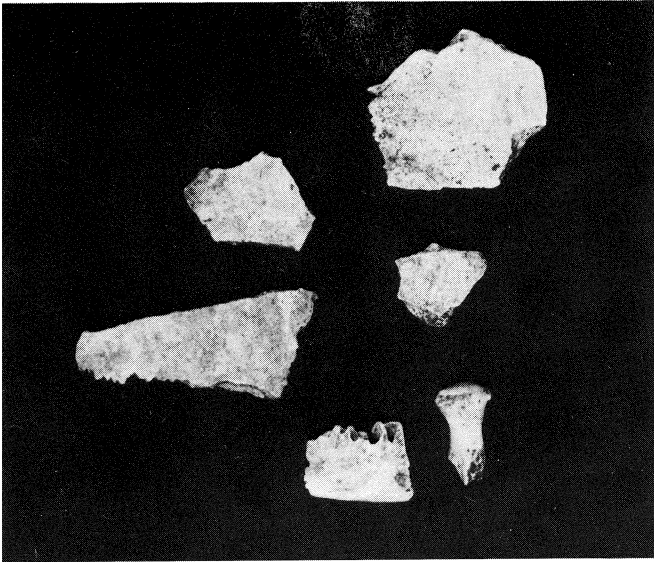




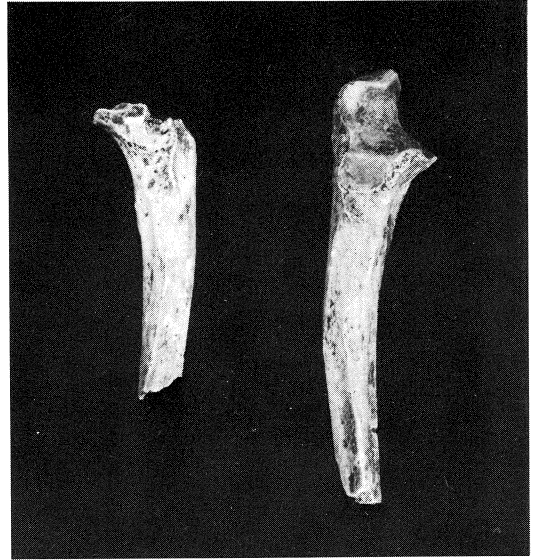




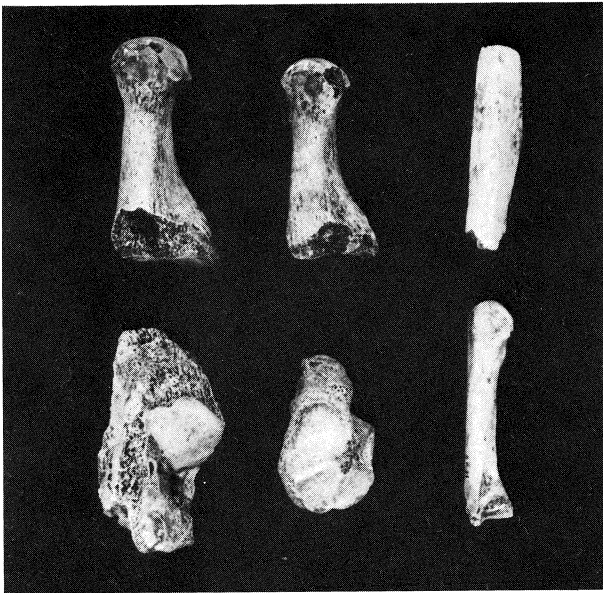




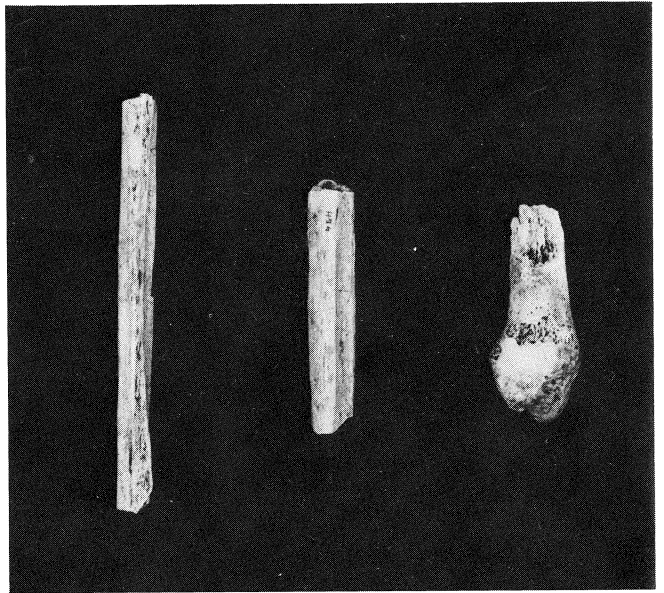
頭蓋片



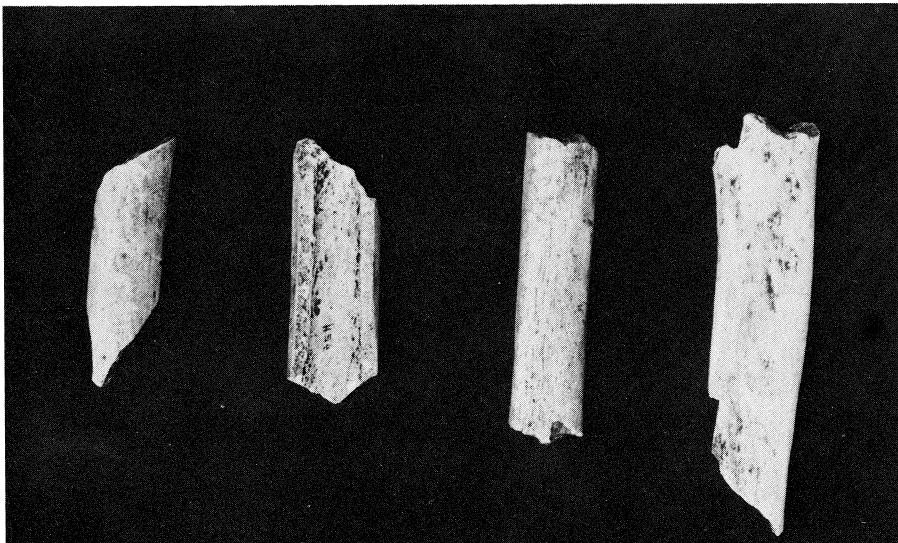
尺骨



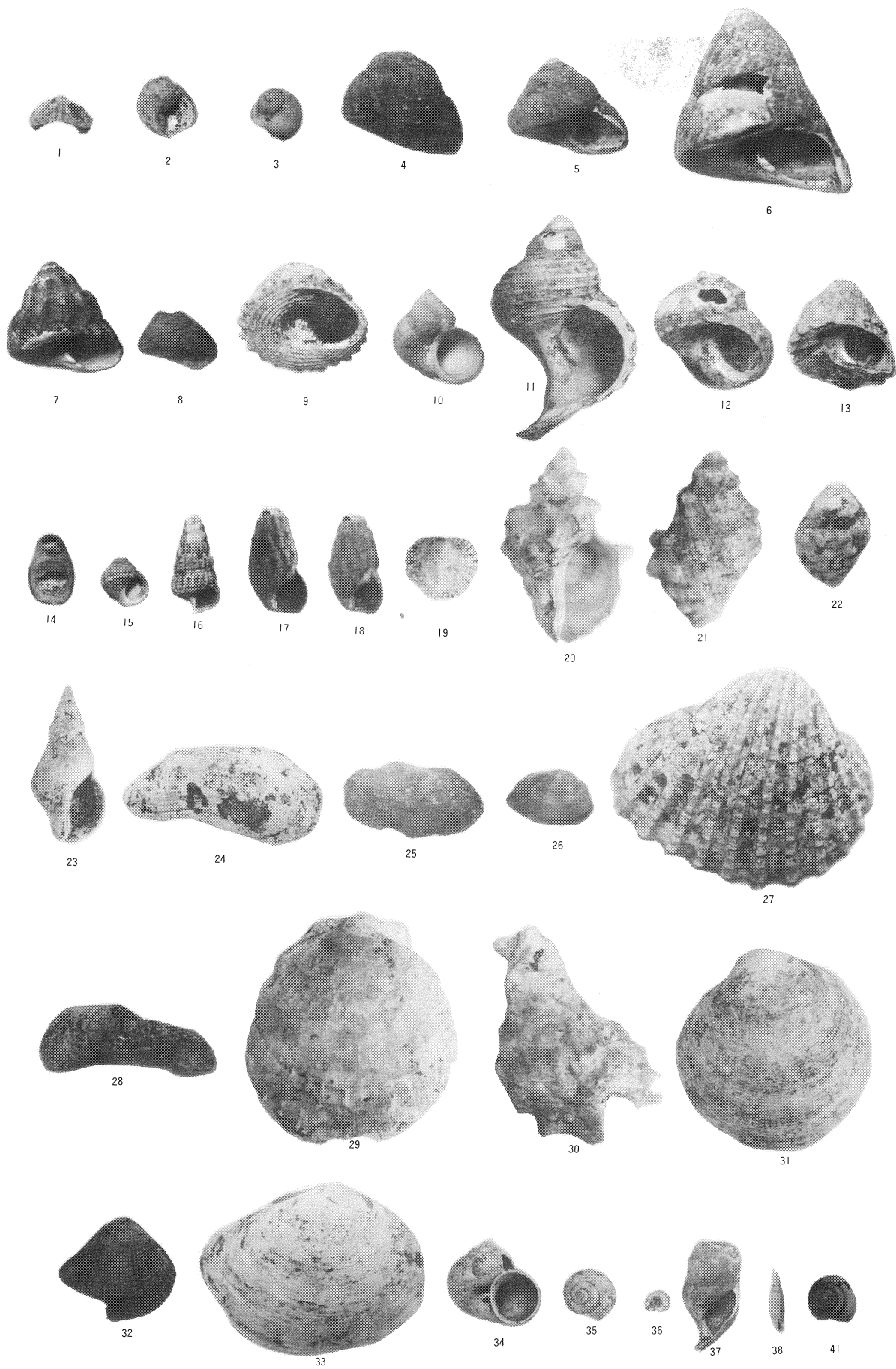
足根骨, 中足骨, 中手骨, 脛骨片

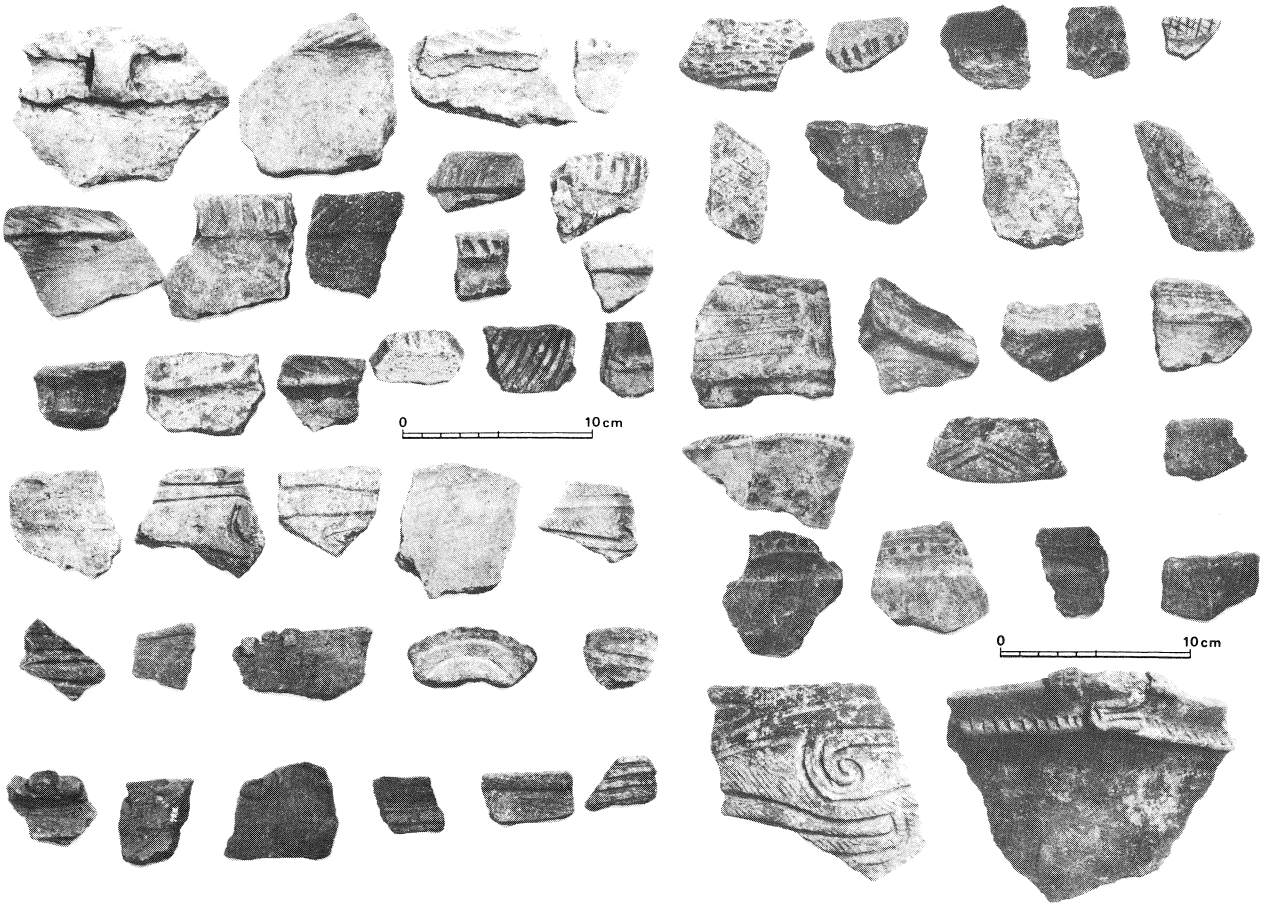
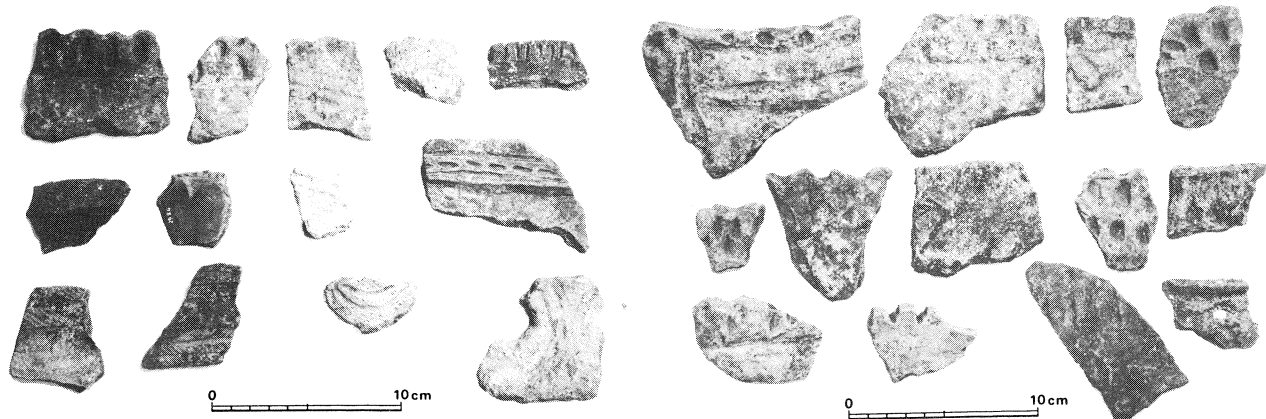
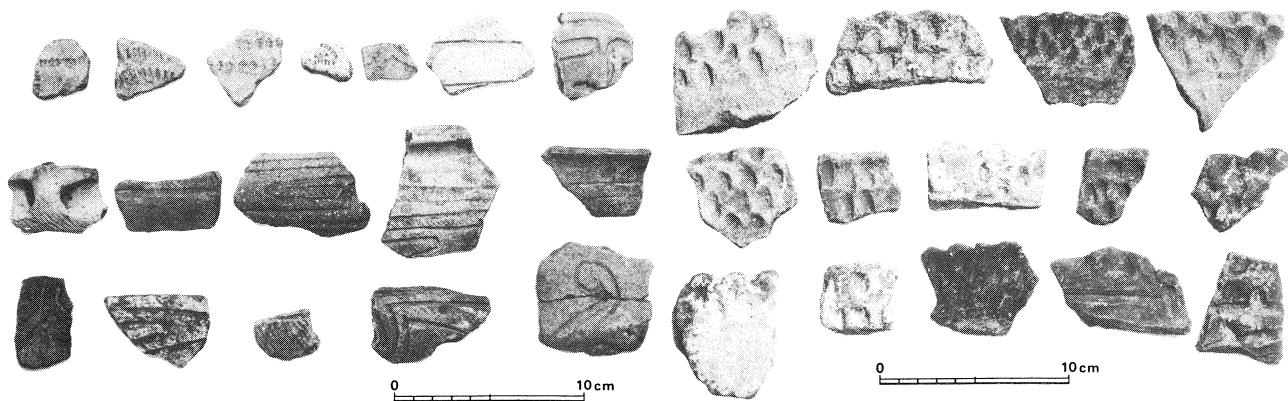


腓骨



大腿骨片





諫早市文化財調査報告書第5集

有喜貝塚

昭和59年3月31日

発行所 諫早市教育委員会
諫早市東小路町1番地
印刷所 諫早印刷株式会社
諫早市天満町13番22号