

図版 4



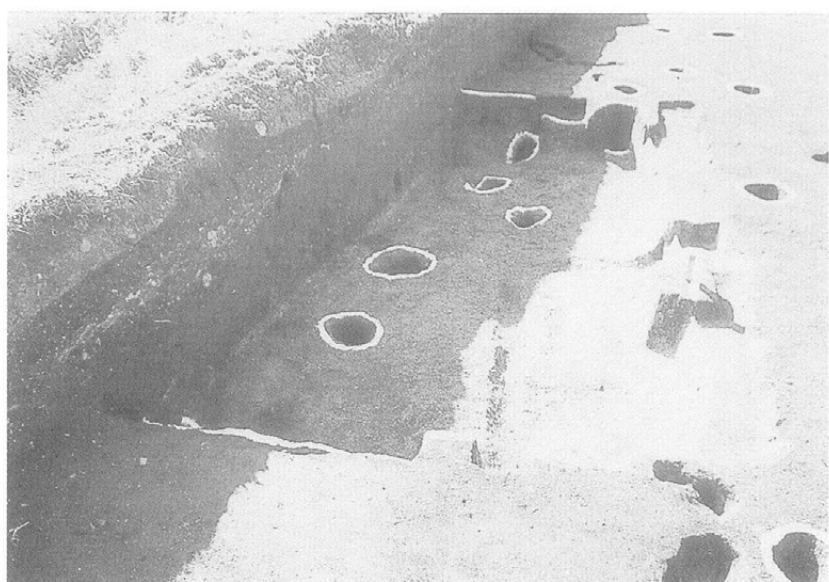
C-S A02検出状況



C-S A02内遺物出土状況



C-S A02完掘状況



C-S A03完掘状況



C-S A04検出状況



C-S A04完掘状況



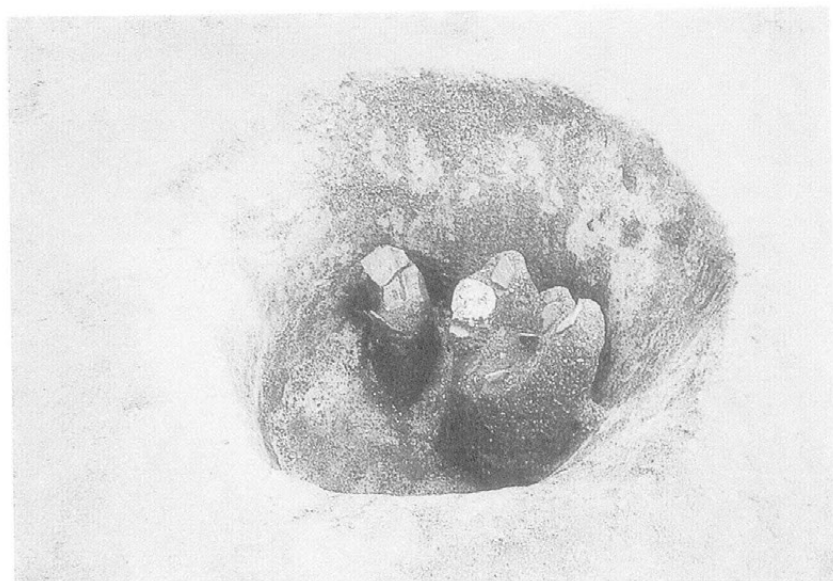
C-S D03完掘状況



C-S X01完掘状況



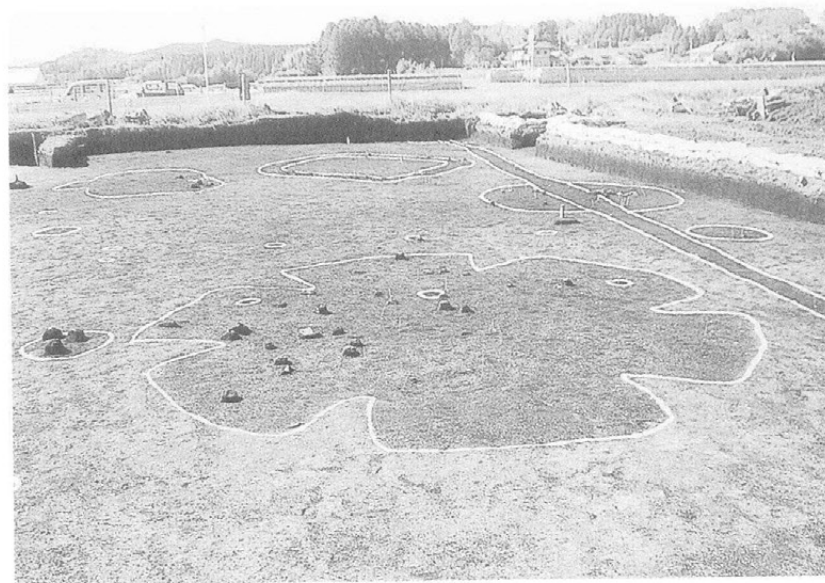
D-S C07・08検出状況



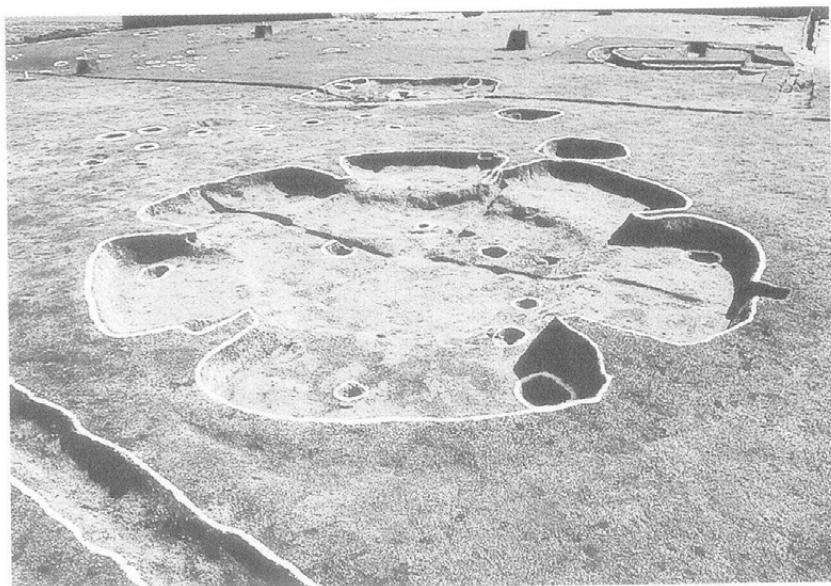
D-S C07内遺物出土状況



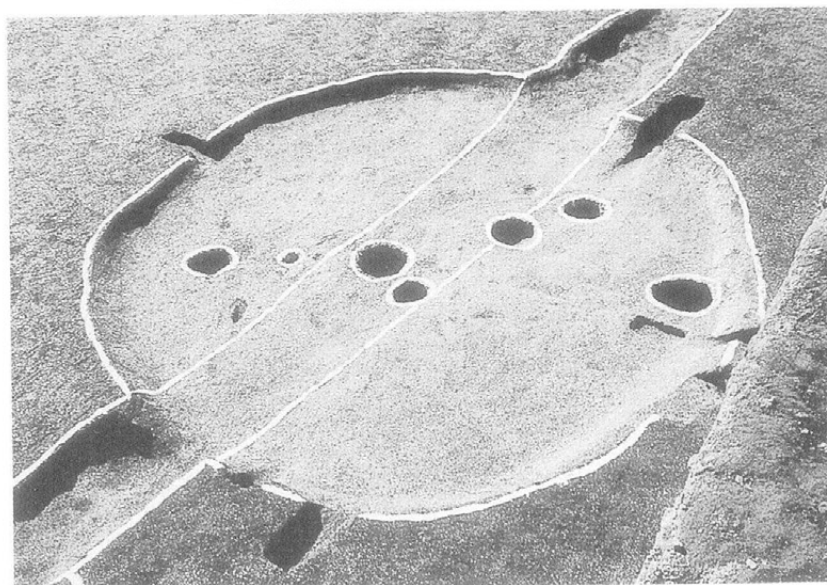
D-S C08内遺物出土状況



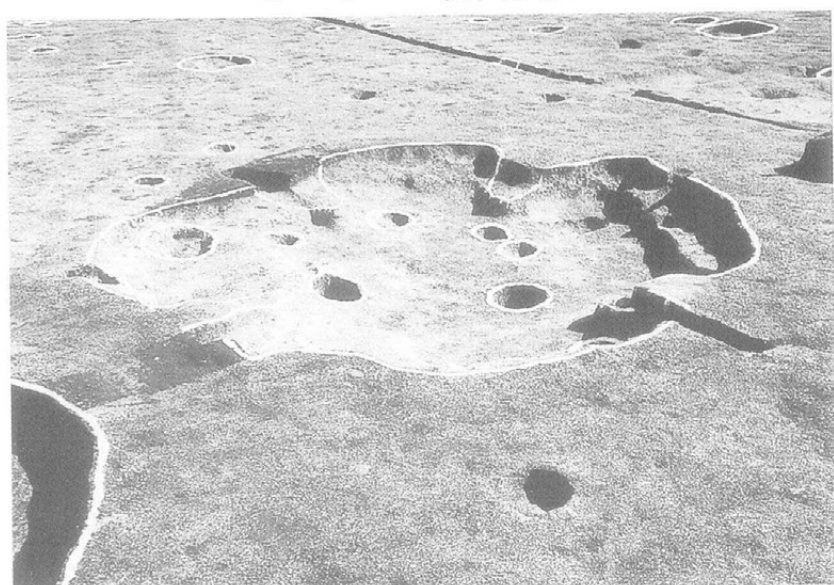
D地区西側遺構検出状況



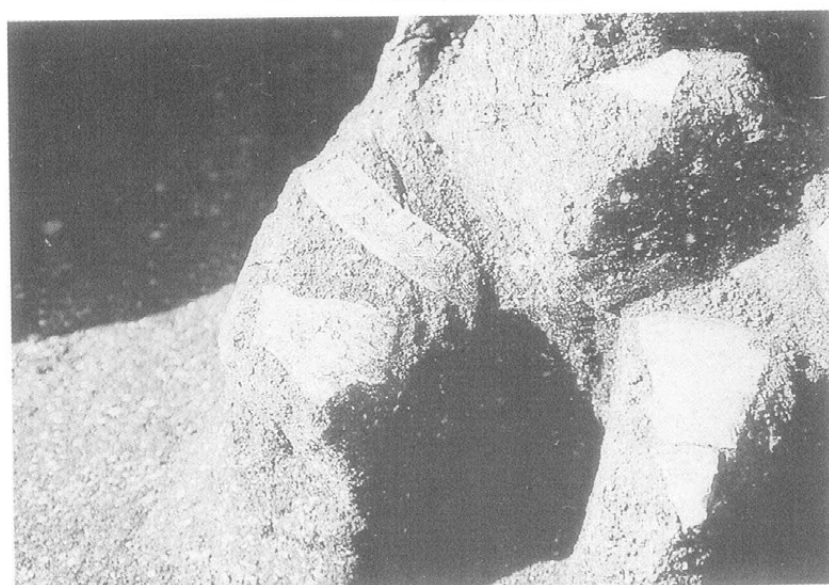
D-S A03検出状況



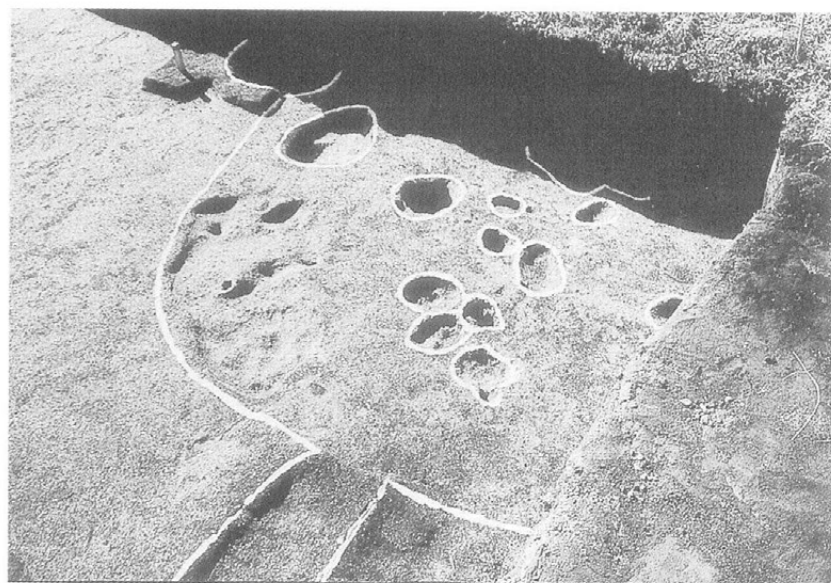
D-S A02完掘状況



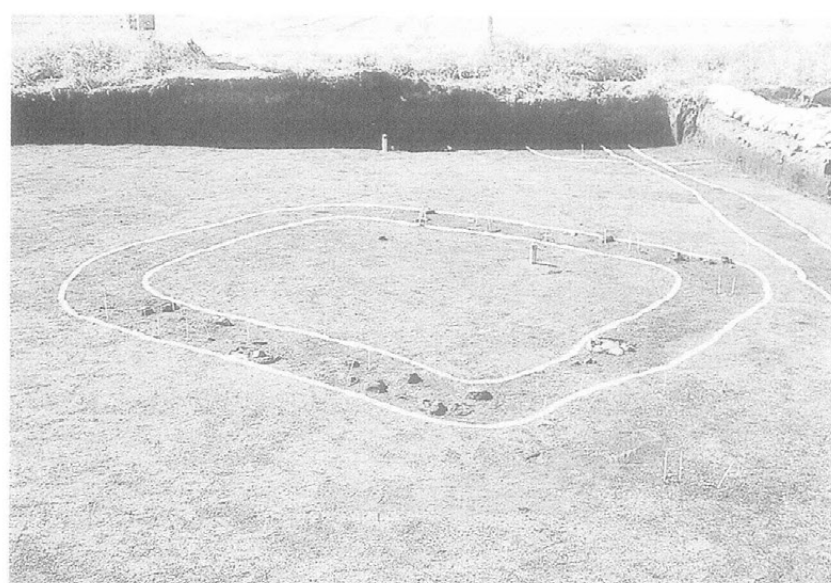
D-S A04完掘状況



D-S A04内遺物出土状況



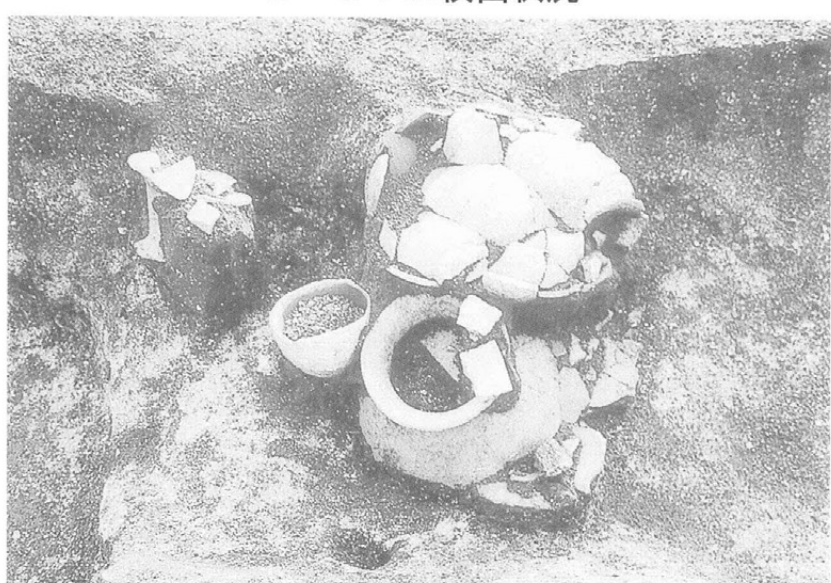
D-S A01完掘状況



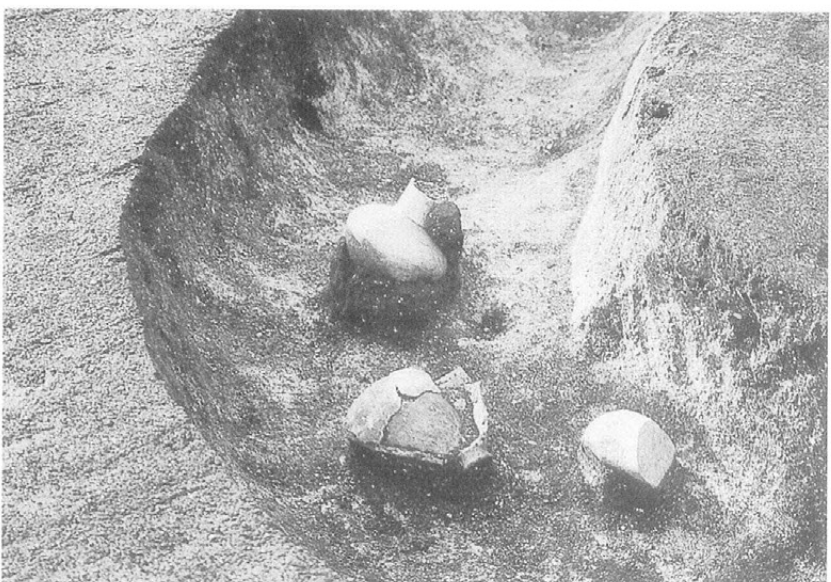
D-S T01検出状況



D-S T01・S C09完掘状況



D-S T01内遺物出土状況①



D-S T01内遺物出土状況②



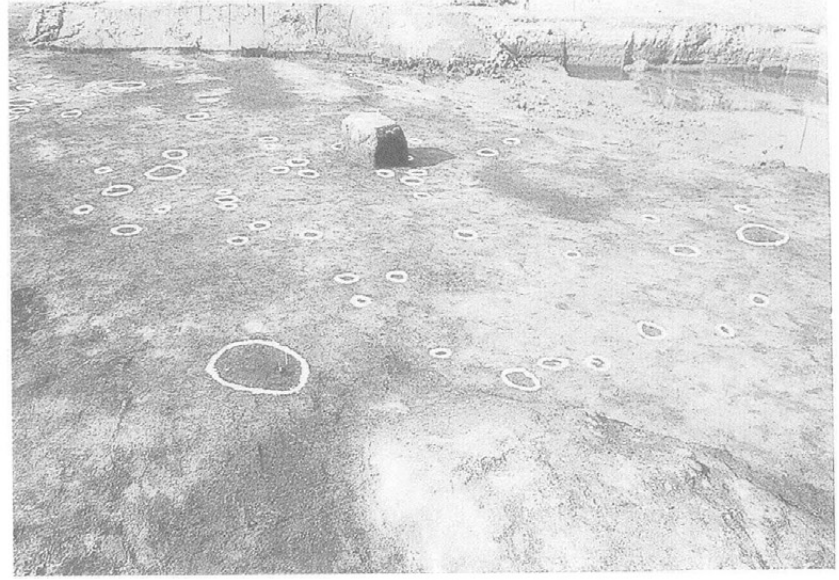
D-S D02内遺物出土状況



D-S T01とS C09内の切り合い状況



A地区遺構群検出状況



A地区掘立柱建物跡検出状況



古代末～中世初頭の水田跡に堆積した砂礫層



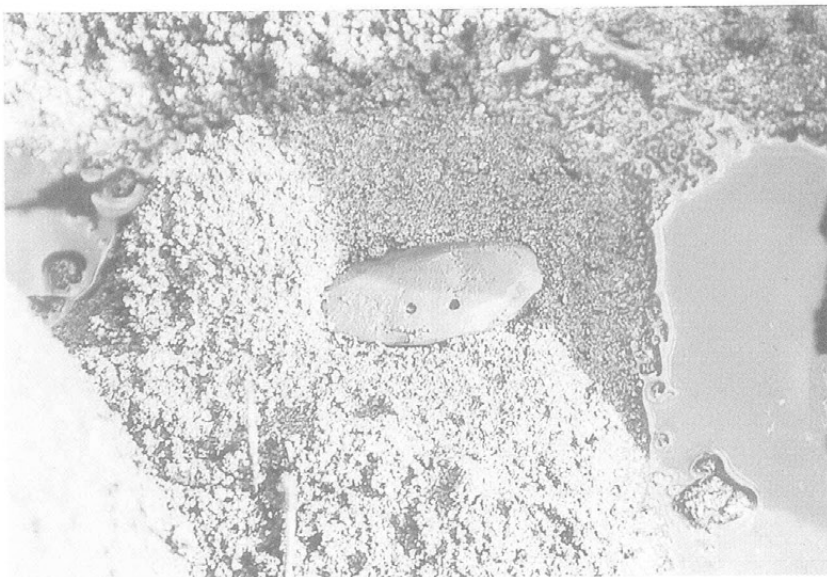
B地区遺構群検出状況



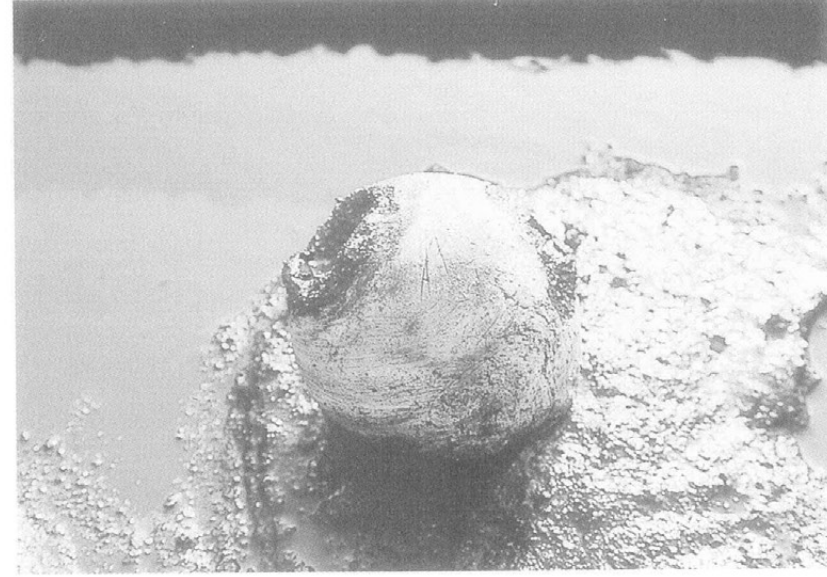
S A01検出状況



S A01内遺物出土状況



S A01内石包丁出土状況

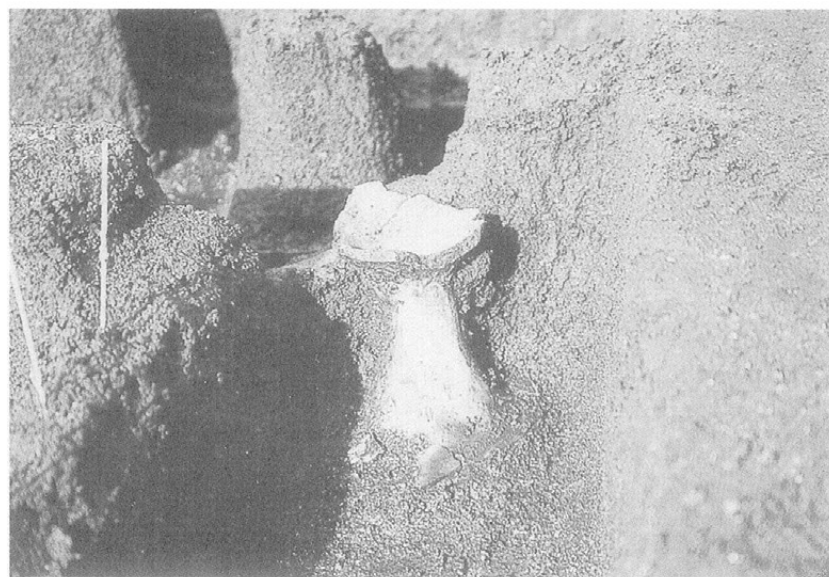


S A01内短頸壺出土状況

図版 8



S A01内石包丁・砥石出土状況



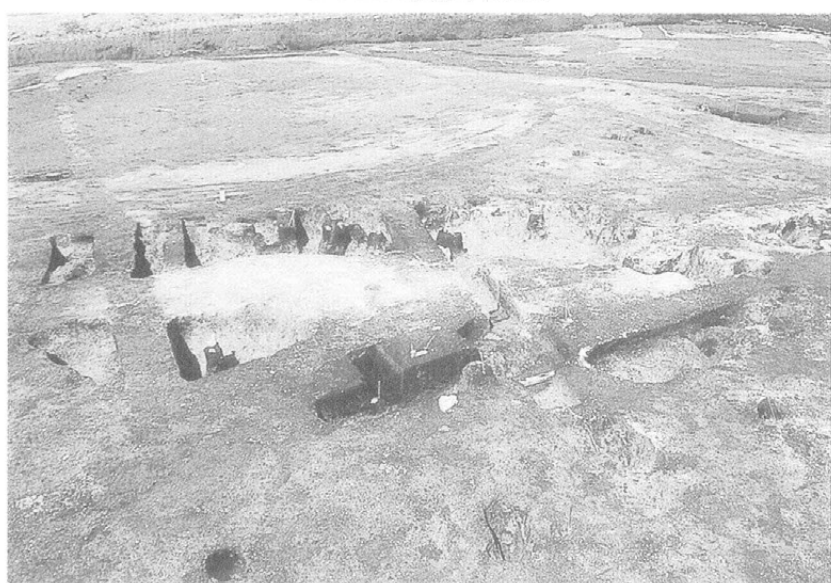
S A01内器台出土状況



S A02検出状況



S A02完掘状況



S C07・08内遺物出土状況



S C04・05半裁状況



B地区中世水田面検出状況



縄文晩期～弥生前期遺構群出土状況(上空より)



縄文晩期～弥生前期遺構群出土状況(北側より)



J - S A03検出状況



J - S A03完掘状況



J - S A04完掘状況



J - S A04内遺物出土状況

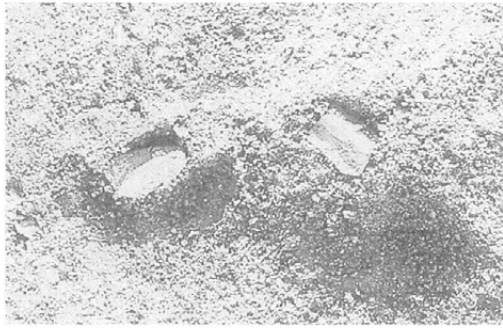


擦り切り石包丁出土状況



打製土掘具出土状況

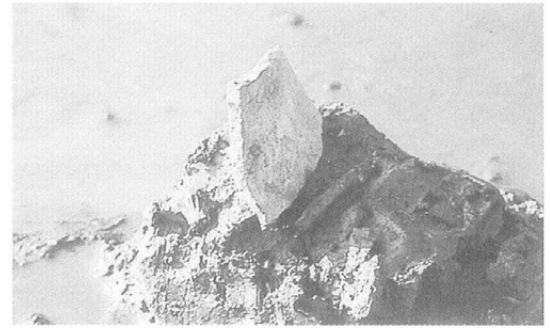
図版10



縄文土器出土状況①



縄文土器出土状況②



縄文土器出土状況③



湧水で水没した地形確認トレンチ



第7トレンチ遠景



縄文晩期～弥生前期の水田該当層



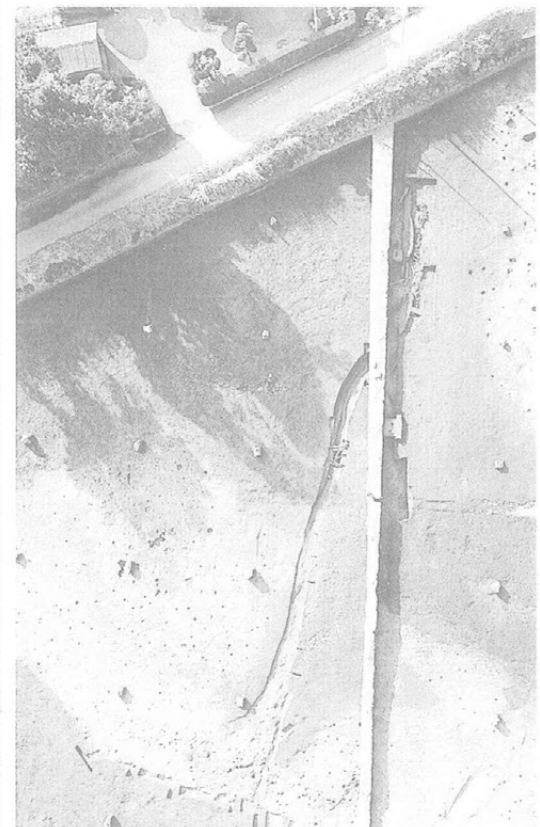
水田該当層に伴う水路状の落ち込み



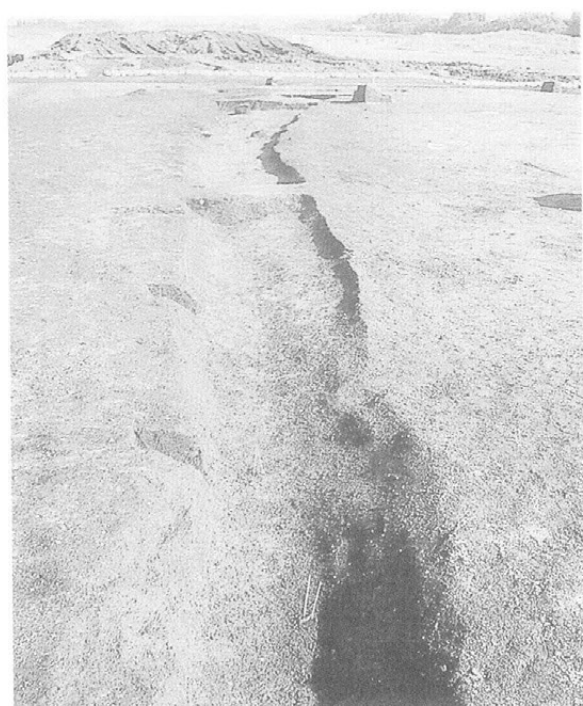
Y-S D01検出状況(東半部)



Y-S D01検出状況(西半部)



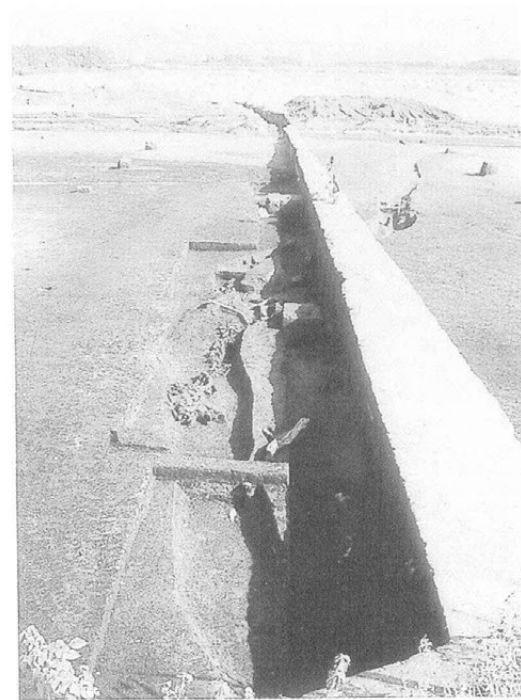
Y-S D01~03完掘状況(上空より)



Y-S D01完掘状況(東半部①)



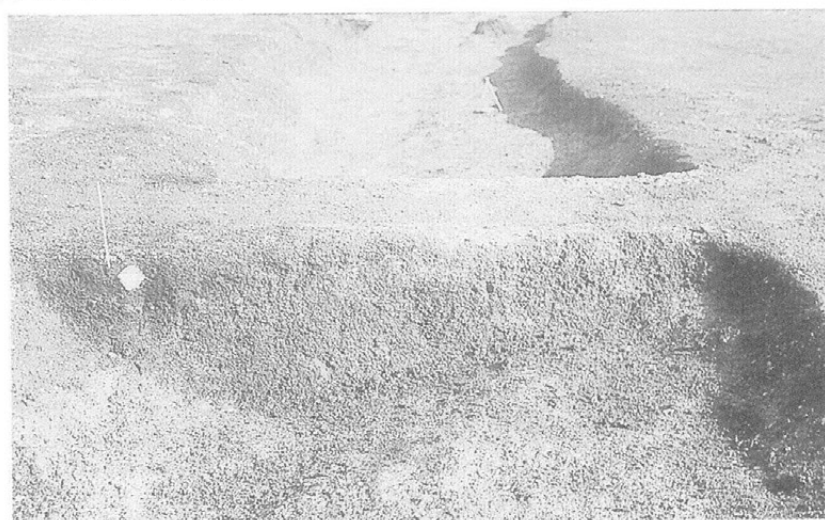
Y-S D01完掘状況(東半部②)



Y-S D01完掘状況(西半部)



Y-S K01出土状況①



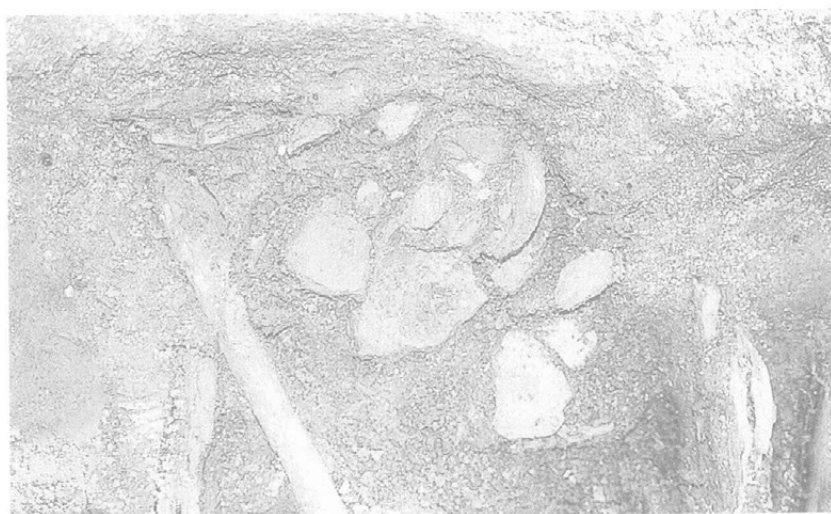
Y-S D01土層断面



Y-S K01出土状況②



Y-S K01出土状況③



Y-S D01内短頸壺出土状況



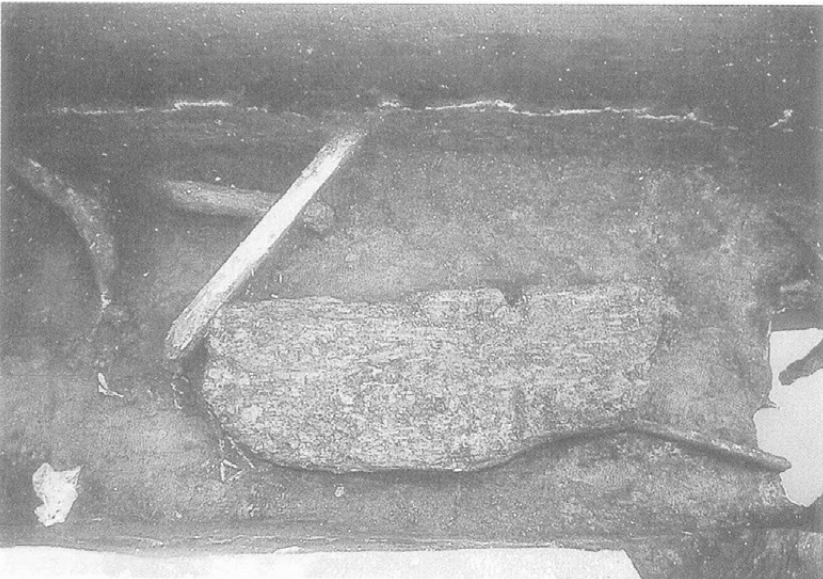
Y-S D01内遺物出土状況



Y-S D01内植物遺体・木製品出土状況



Y-S D01内植物遺体出土状況



第6トレンチ内植物遺体・木製品出土状況



第6トレンチ内植物遺体出土状況



古代竪穴住居群検出状況



A-S A01・12掘り下げ状況



A-S A01・12完掘状況



A-S N02検出状況



A-S N01検出状況



A-S A02・09・10・14完掘状況



A-S A03・10・11・15完掘状況



A-S A04完掘状況



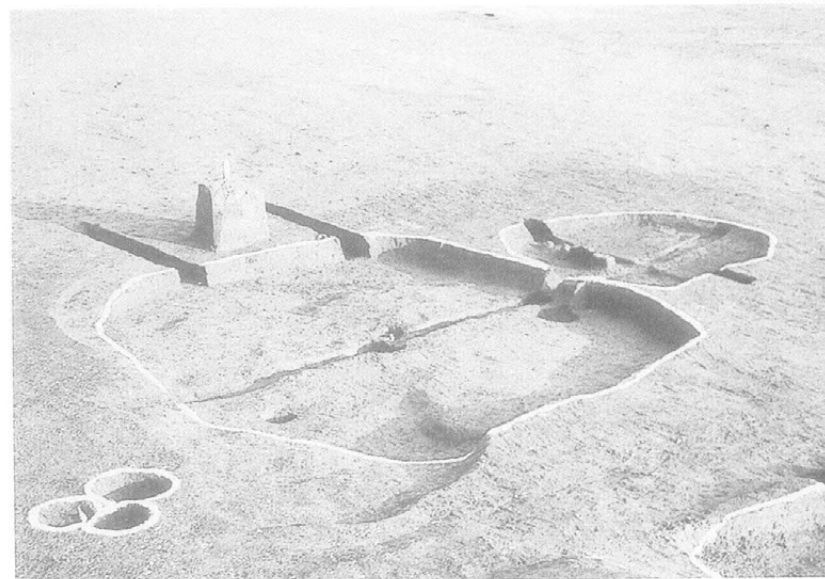
A-S A05完掘状況



A-S A06完掘状況



A-S A07完掘状況



A-S A08・16完掘状況



A-S A13掘り下げ状況



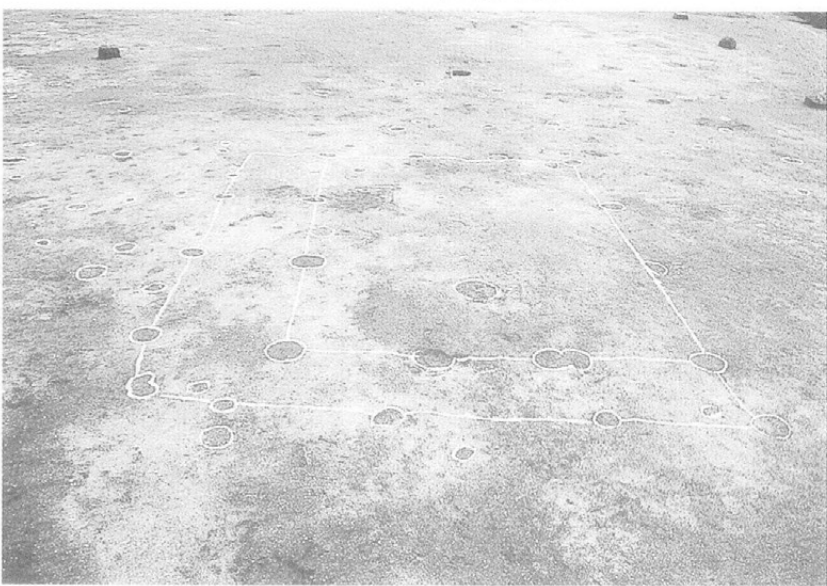
A-S N04検出状況



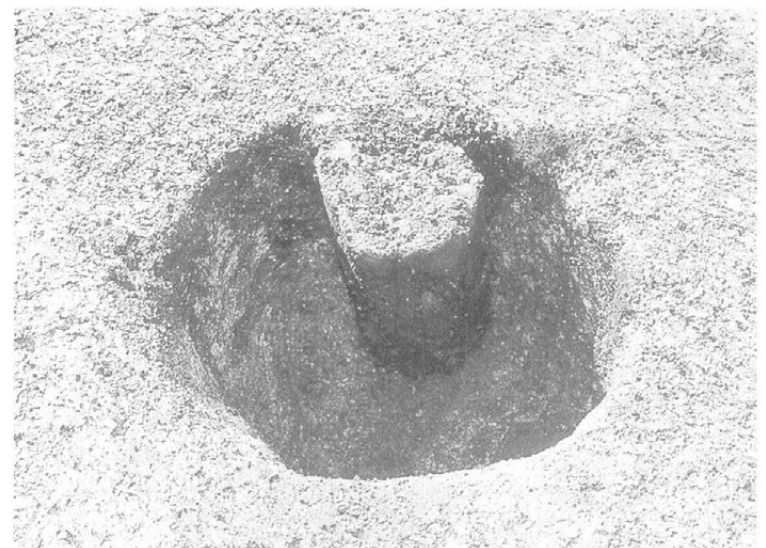
A-S A13完掘状況



古代柱穴群出土状況(上空より)



A-S B01検出状況



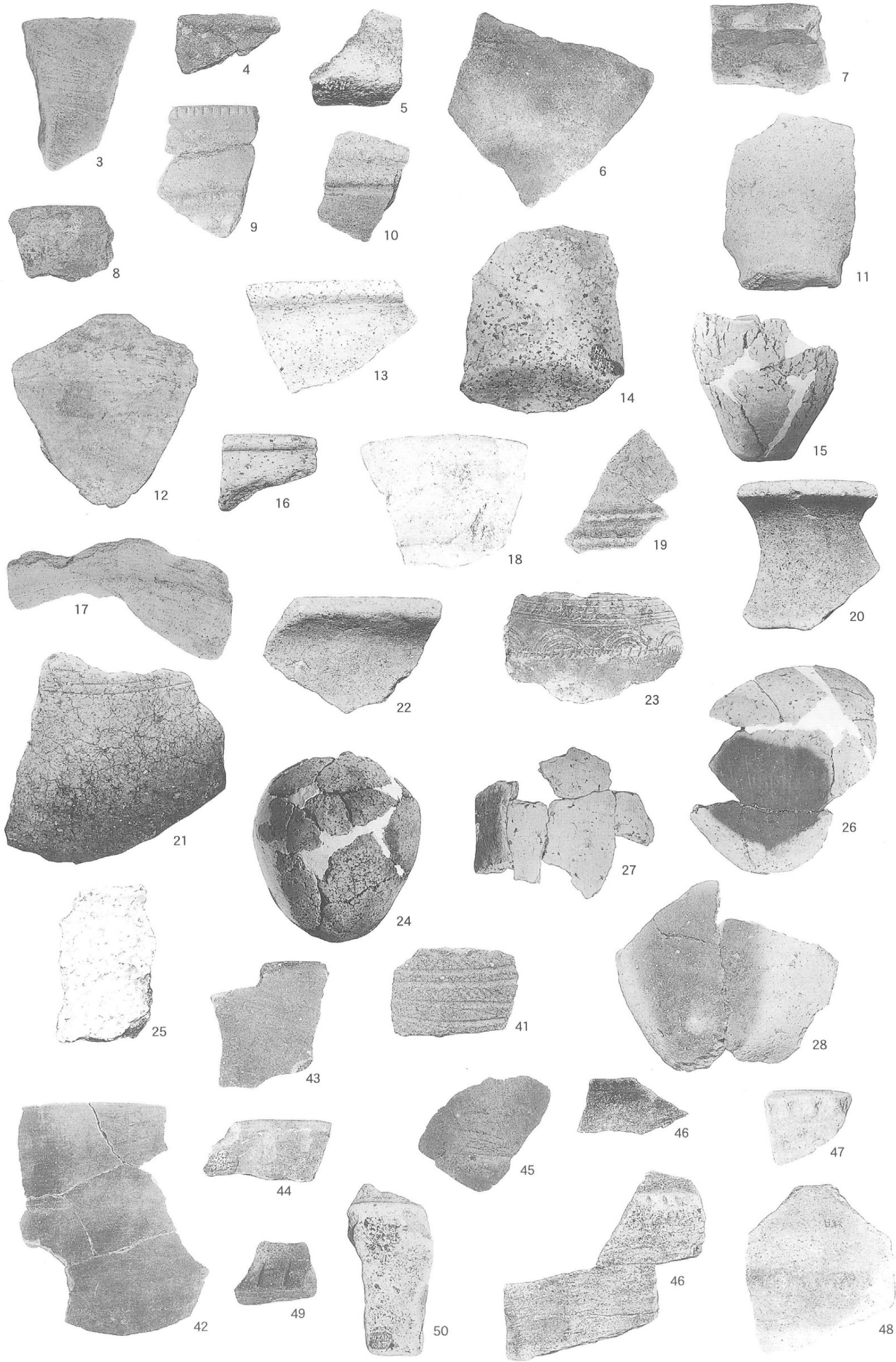
古代柱穴内柱根出土状況



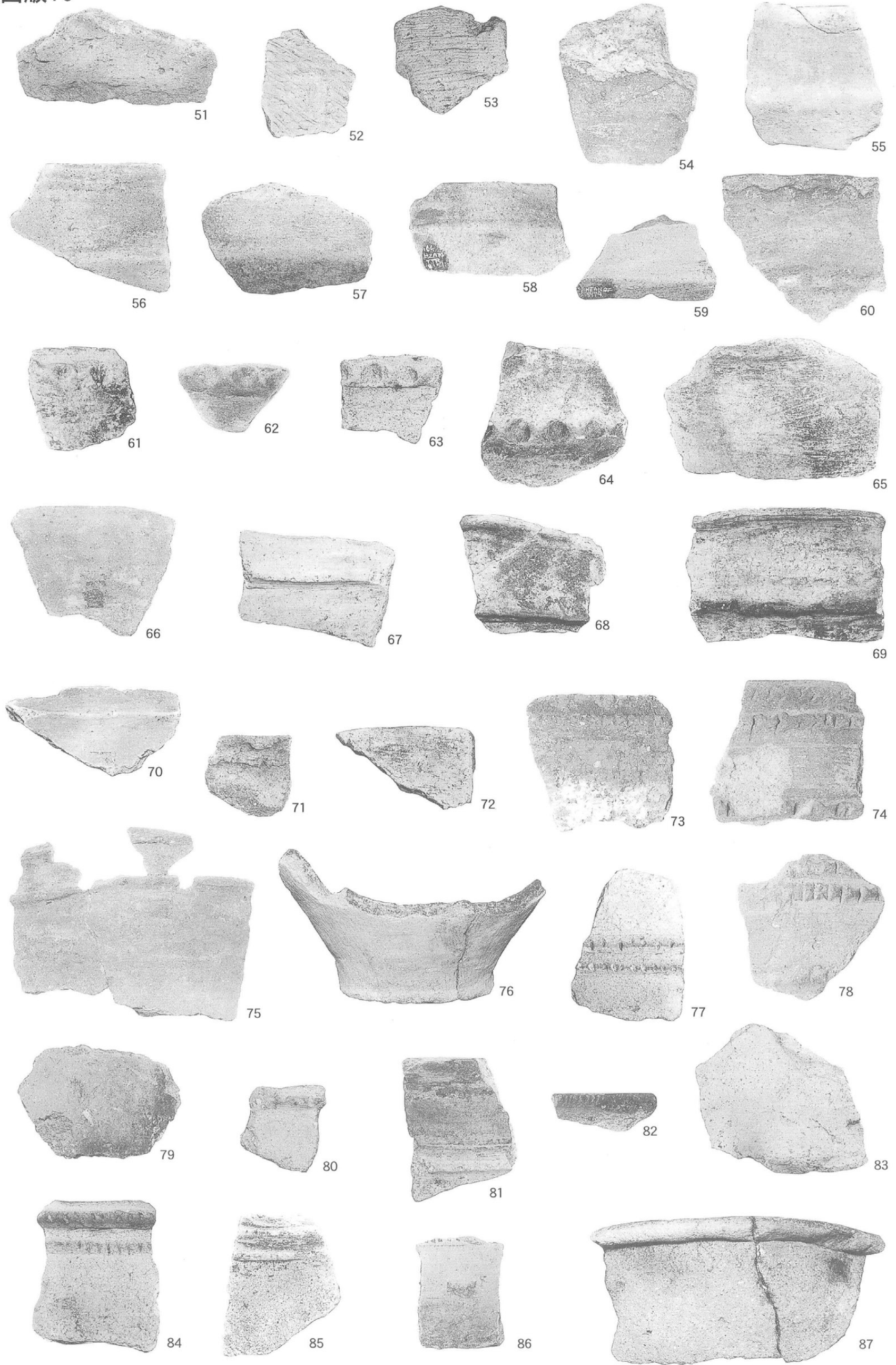
古代柱穴内遺物出土状況①

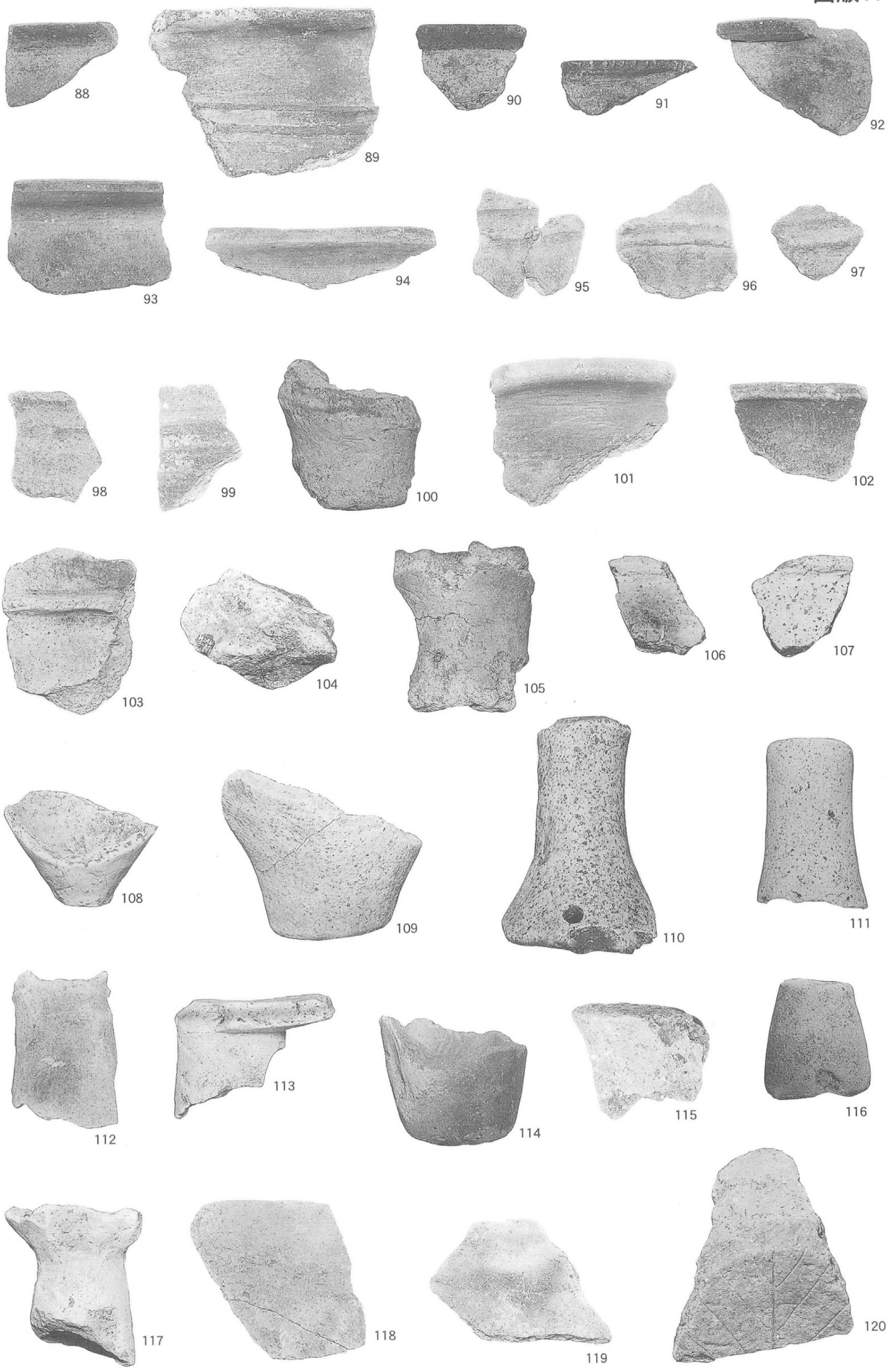


古代柱穴内遺物出土状況②

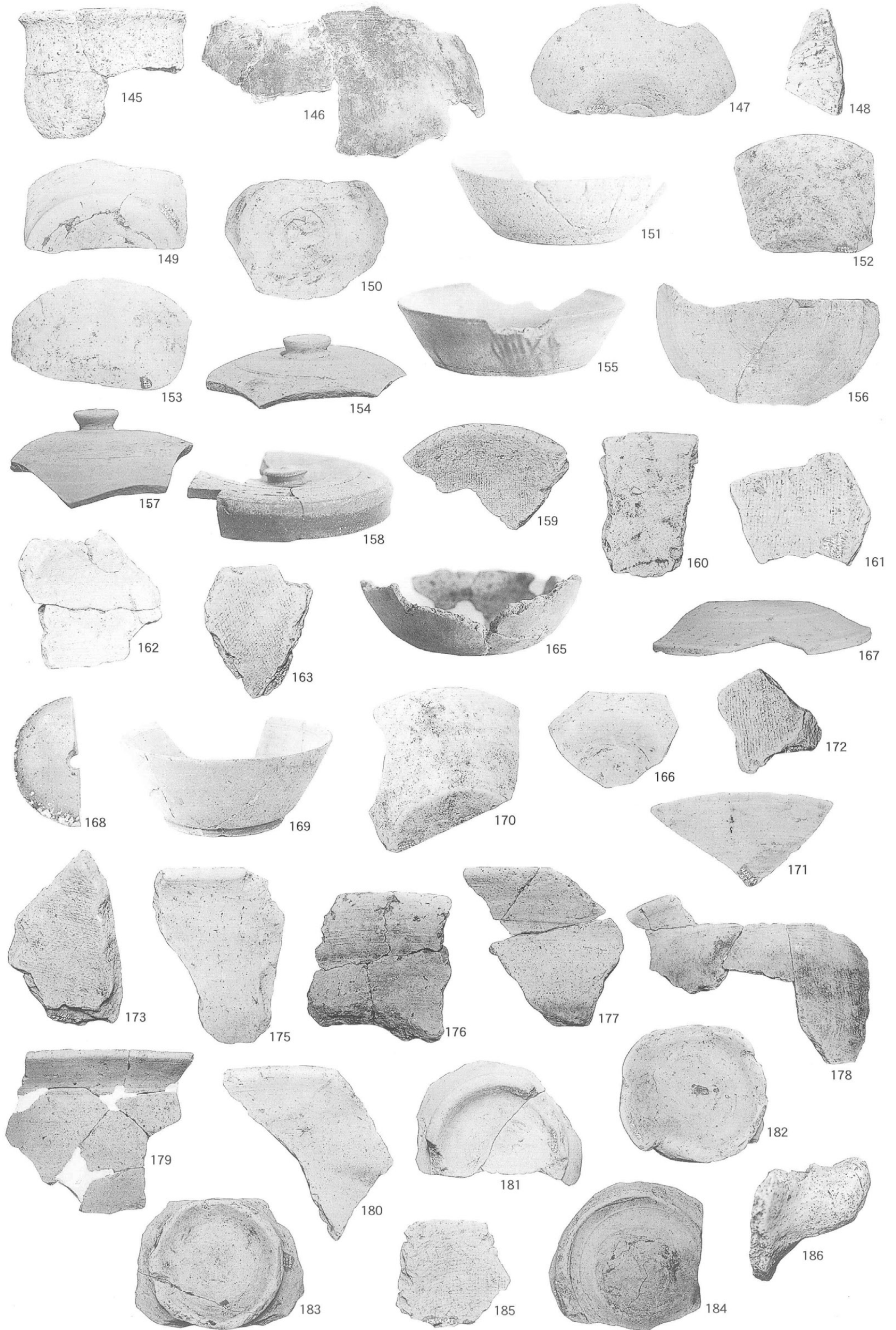


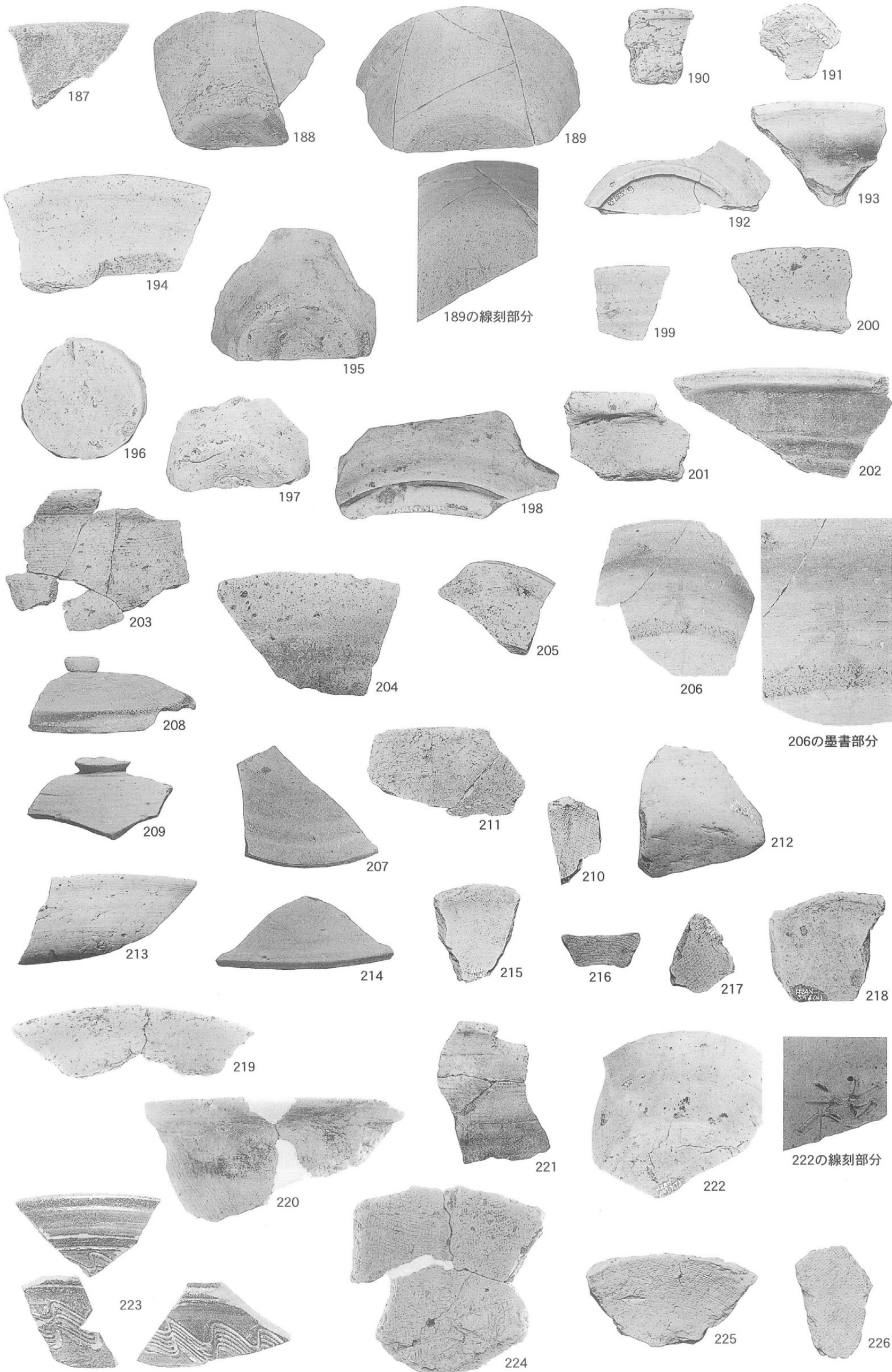
图版16





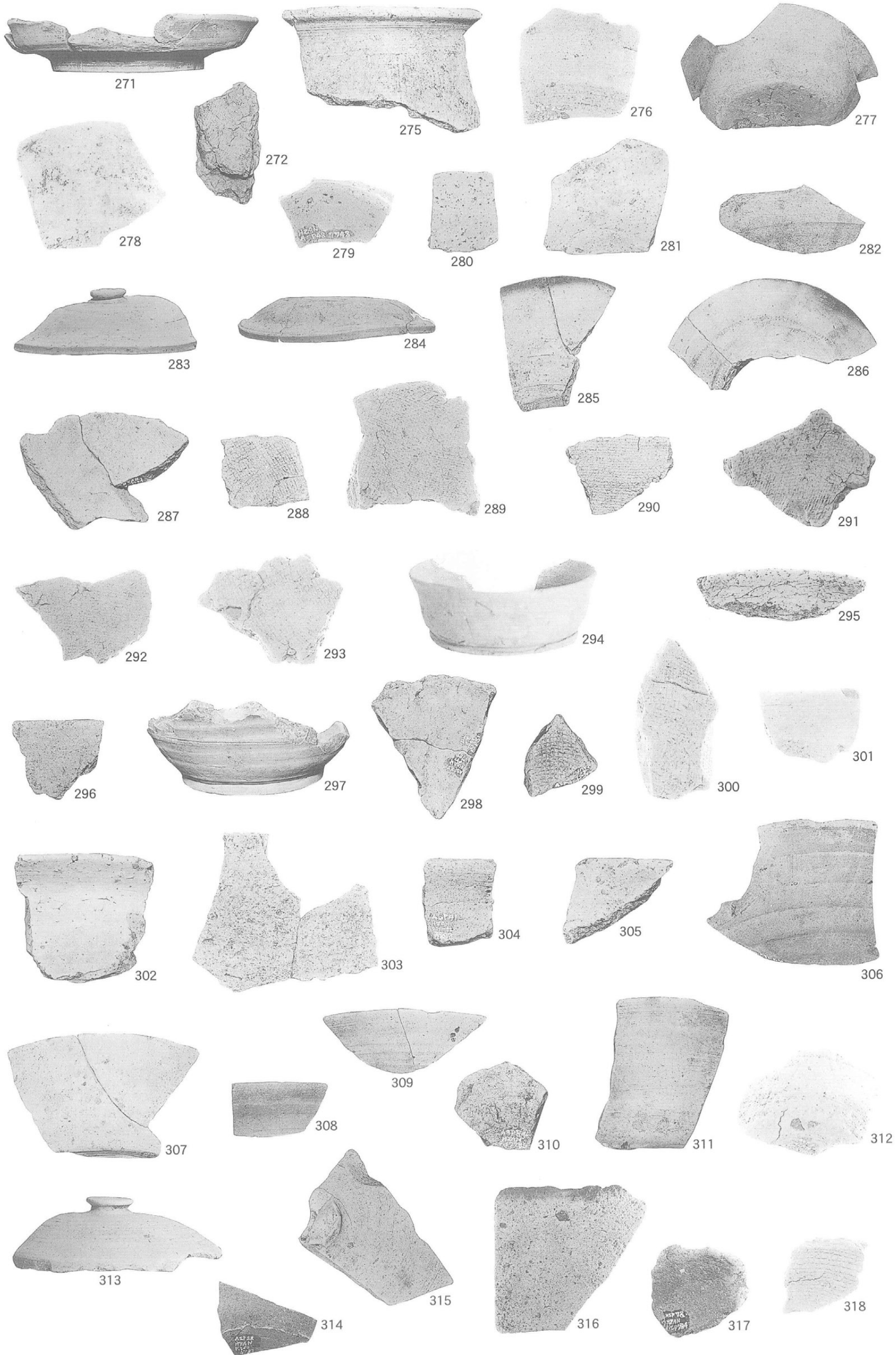
图版18



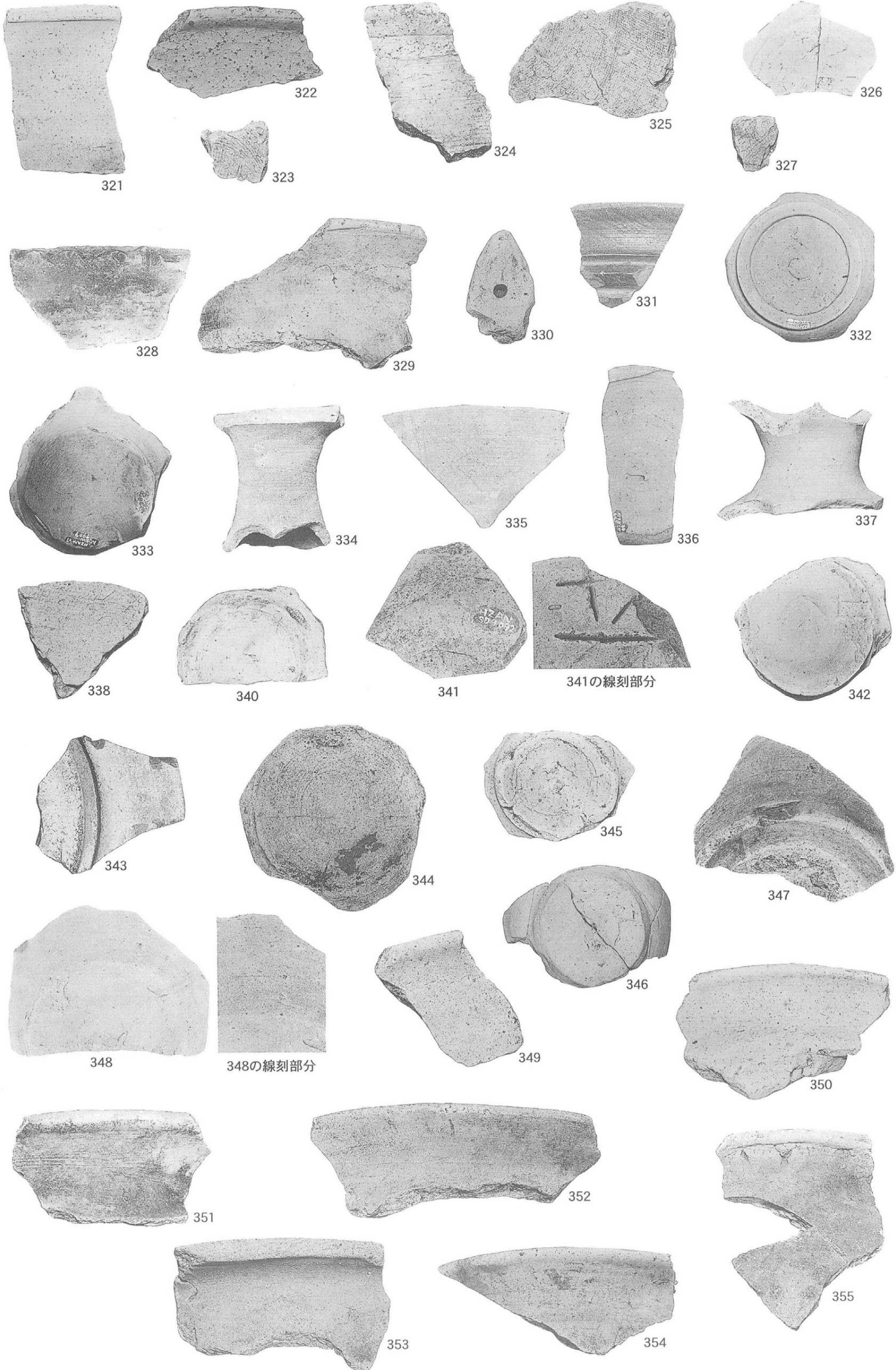


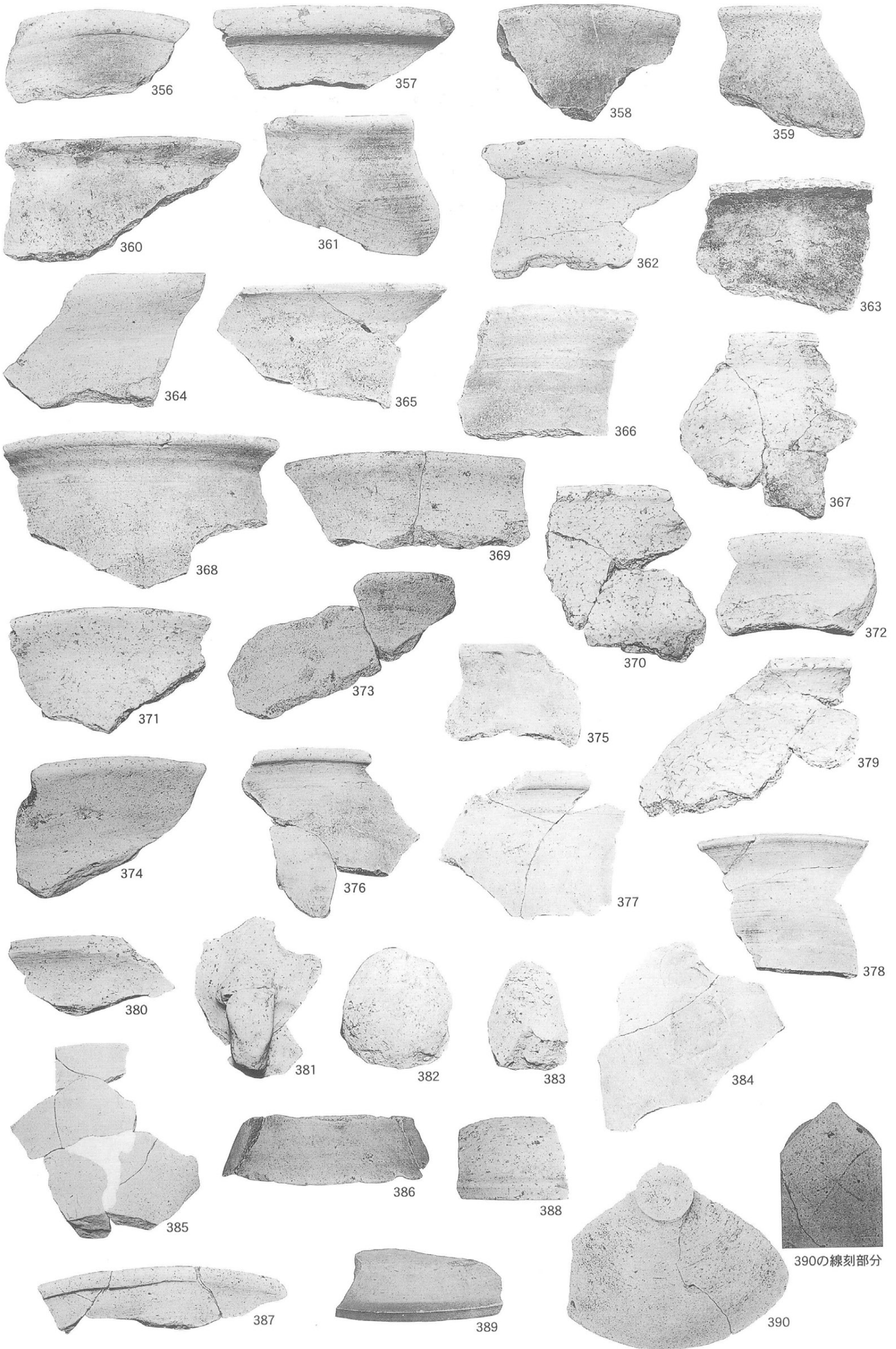
図版20



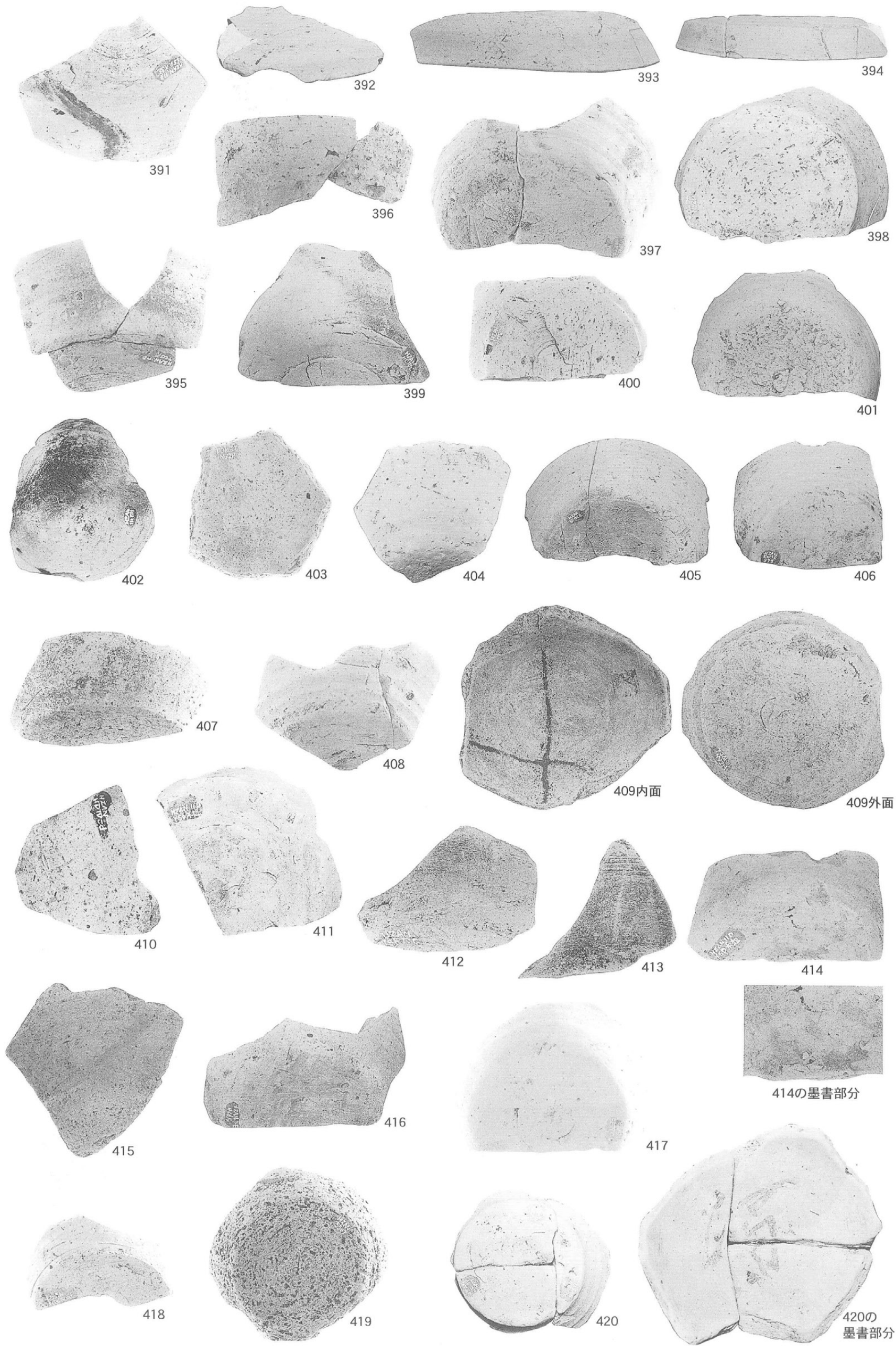


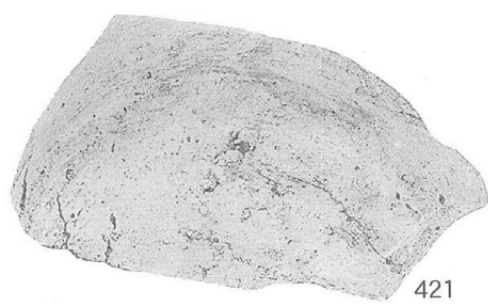
図版22



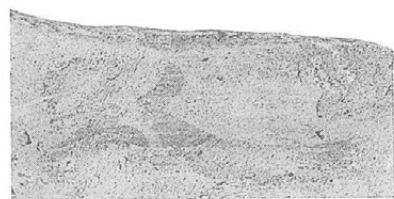


図版24

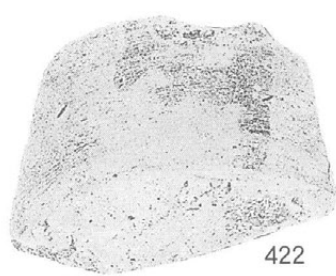




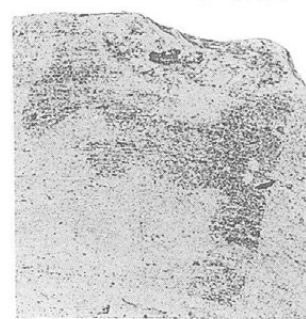
421



421の墨書部分



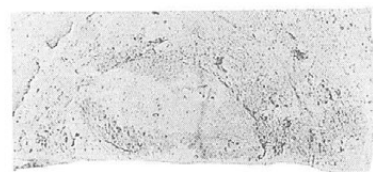
422



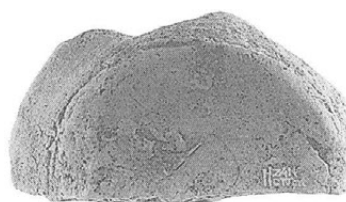
422の墨書部分



423



423の墨書部分



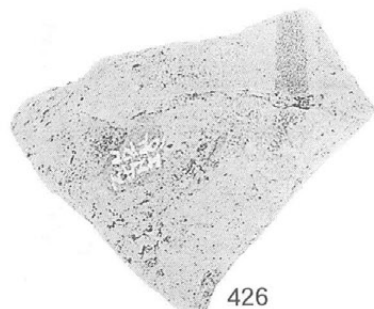
424



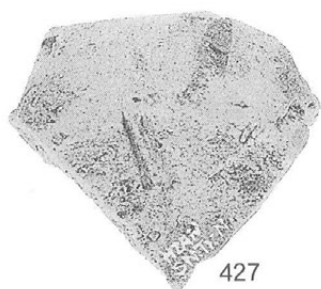
425



425の墨書部分



426



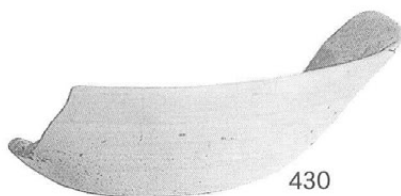
427



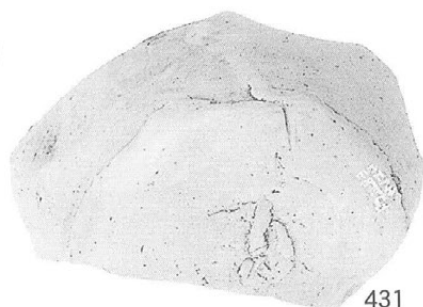
428



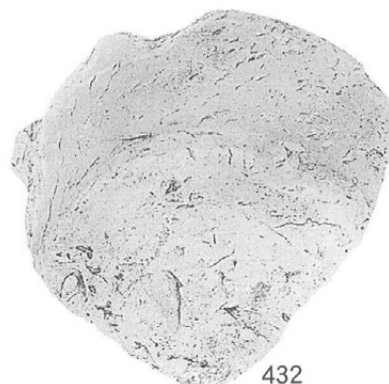
429



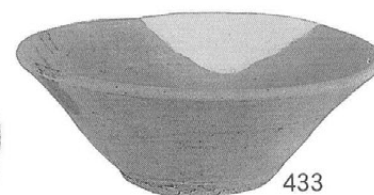
430



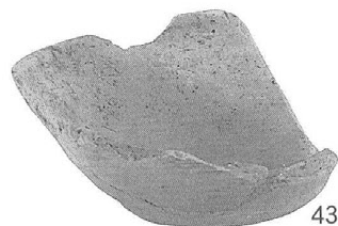
431



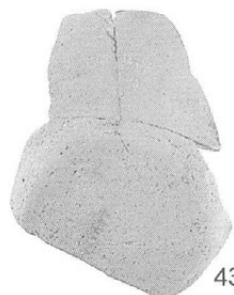
432



433



434



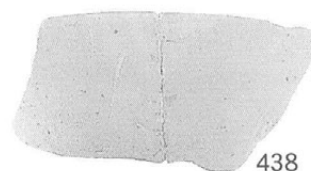
435



436



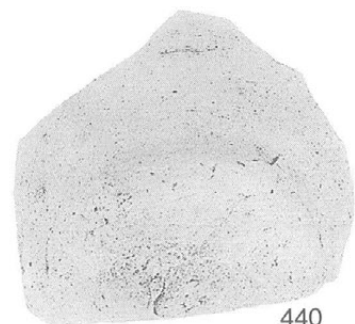
437



438



439



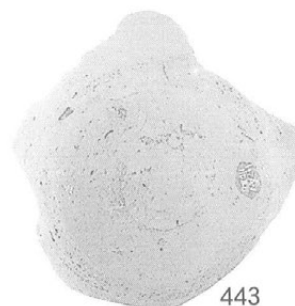
440



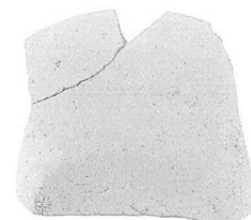
441



442



443



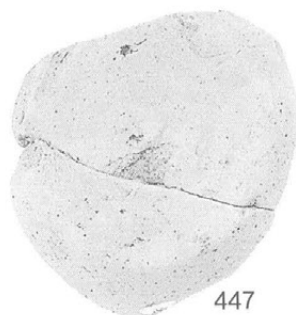
444



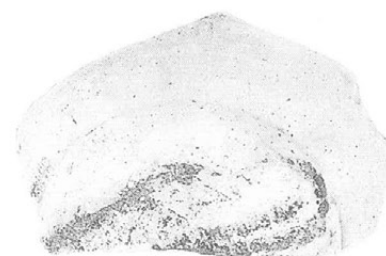
445



446



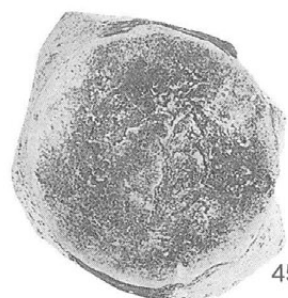
447



448



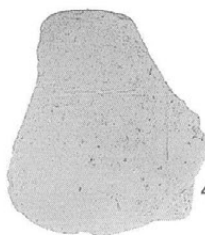
449



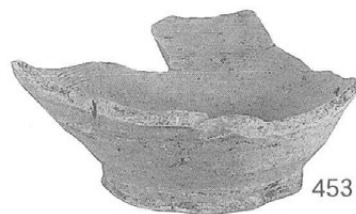
450



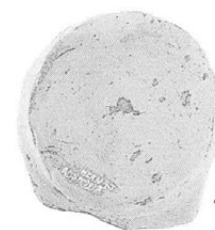
451



452

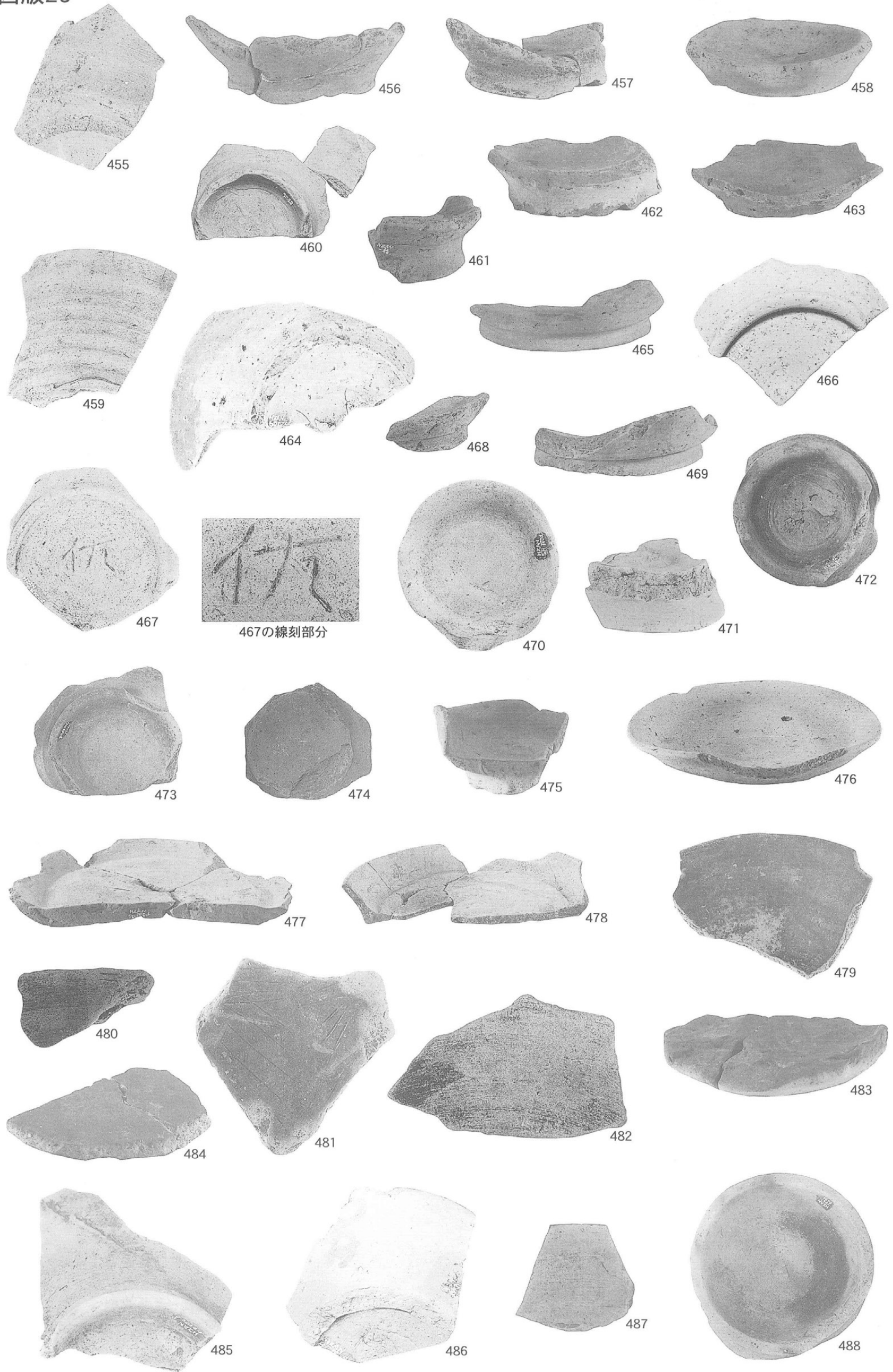


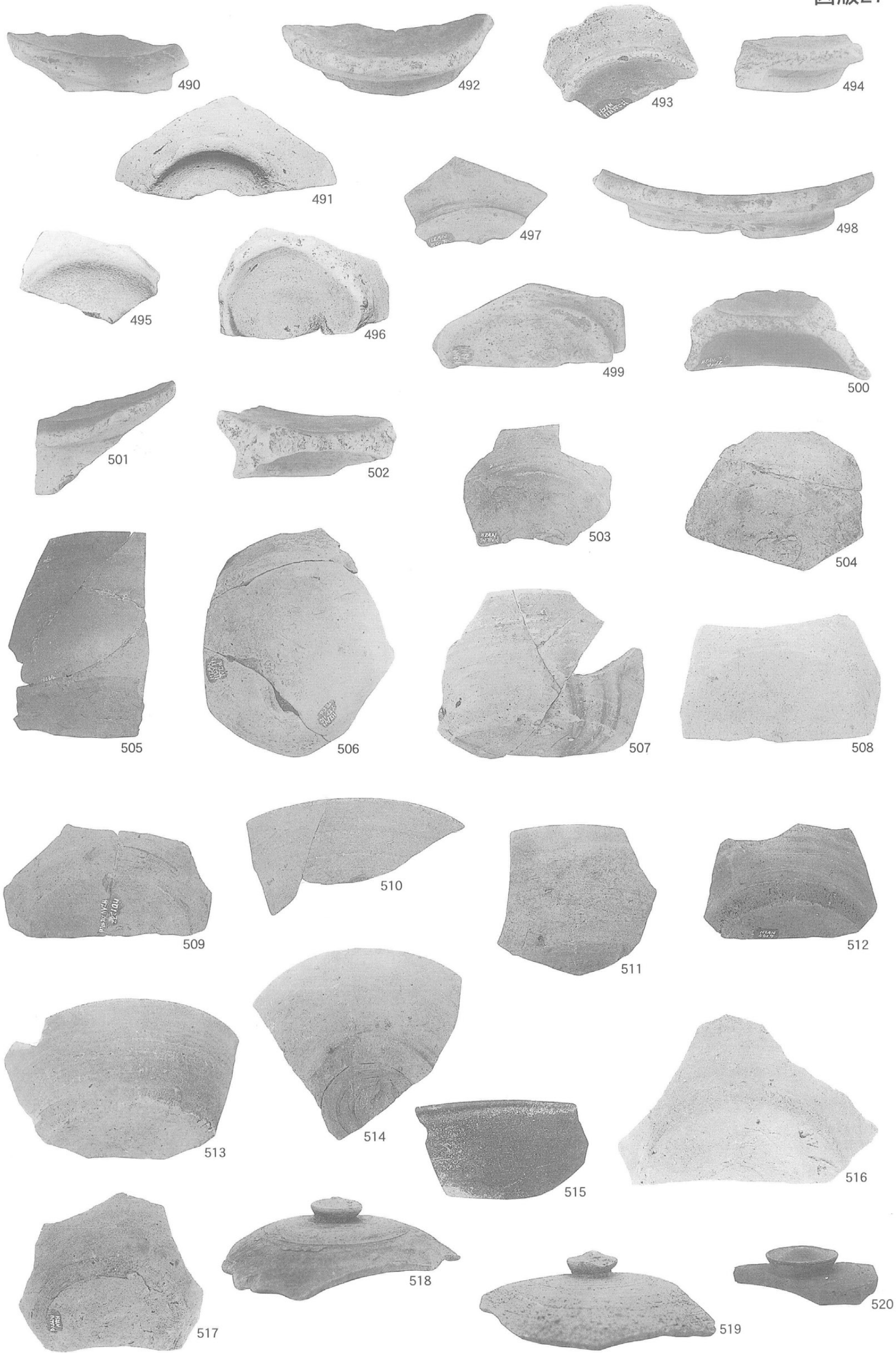
453



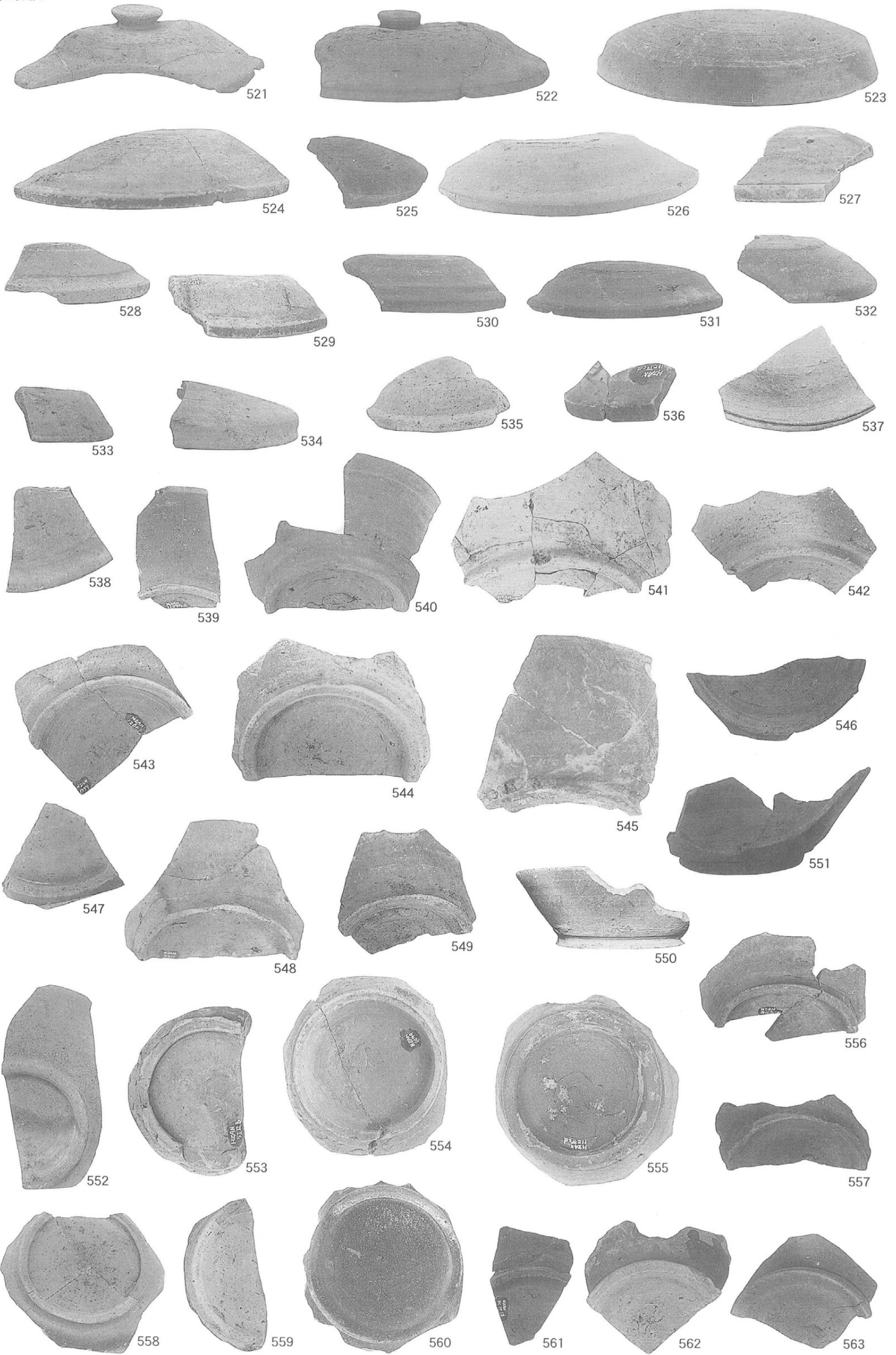
454

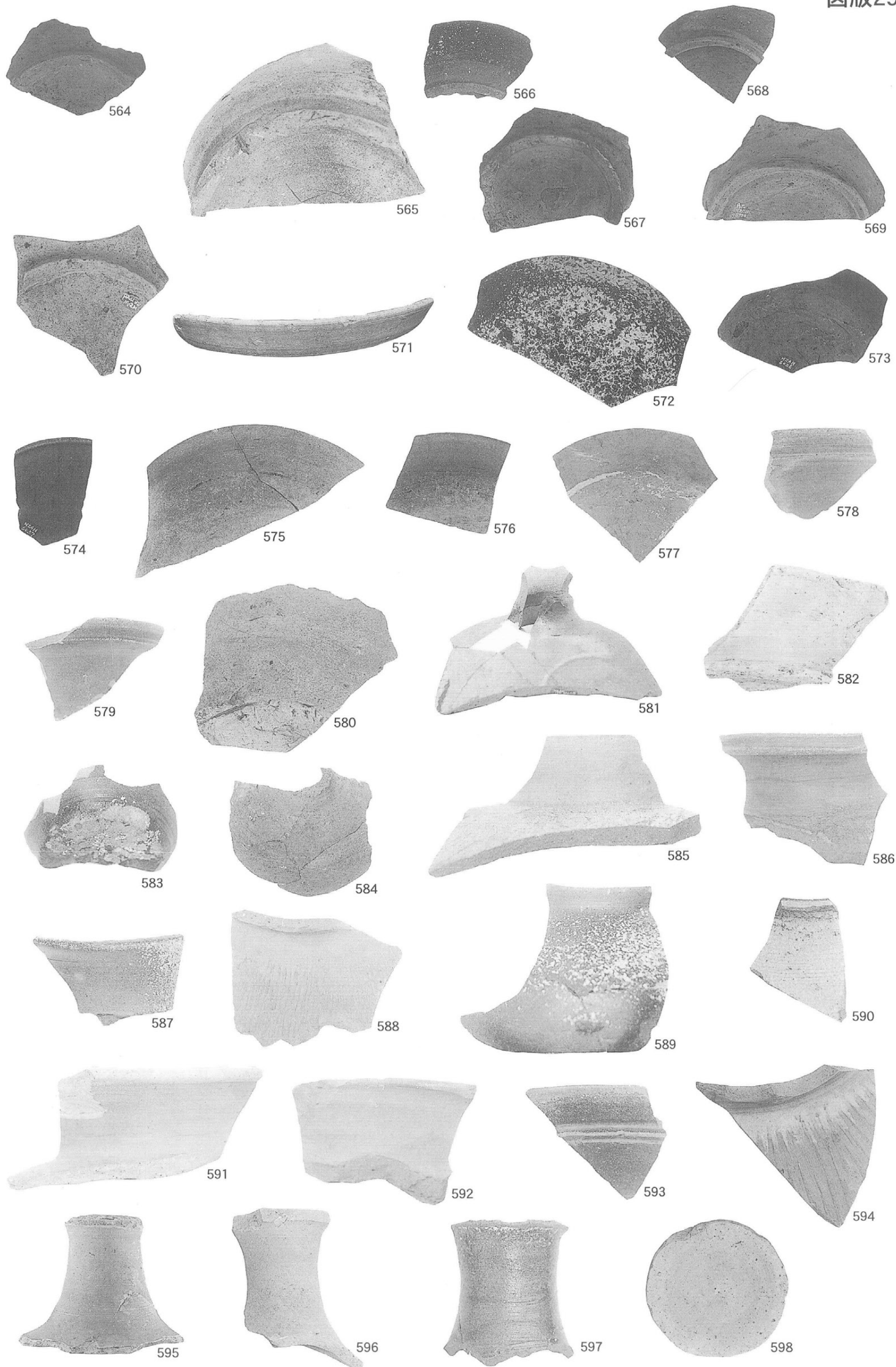
図版26



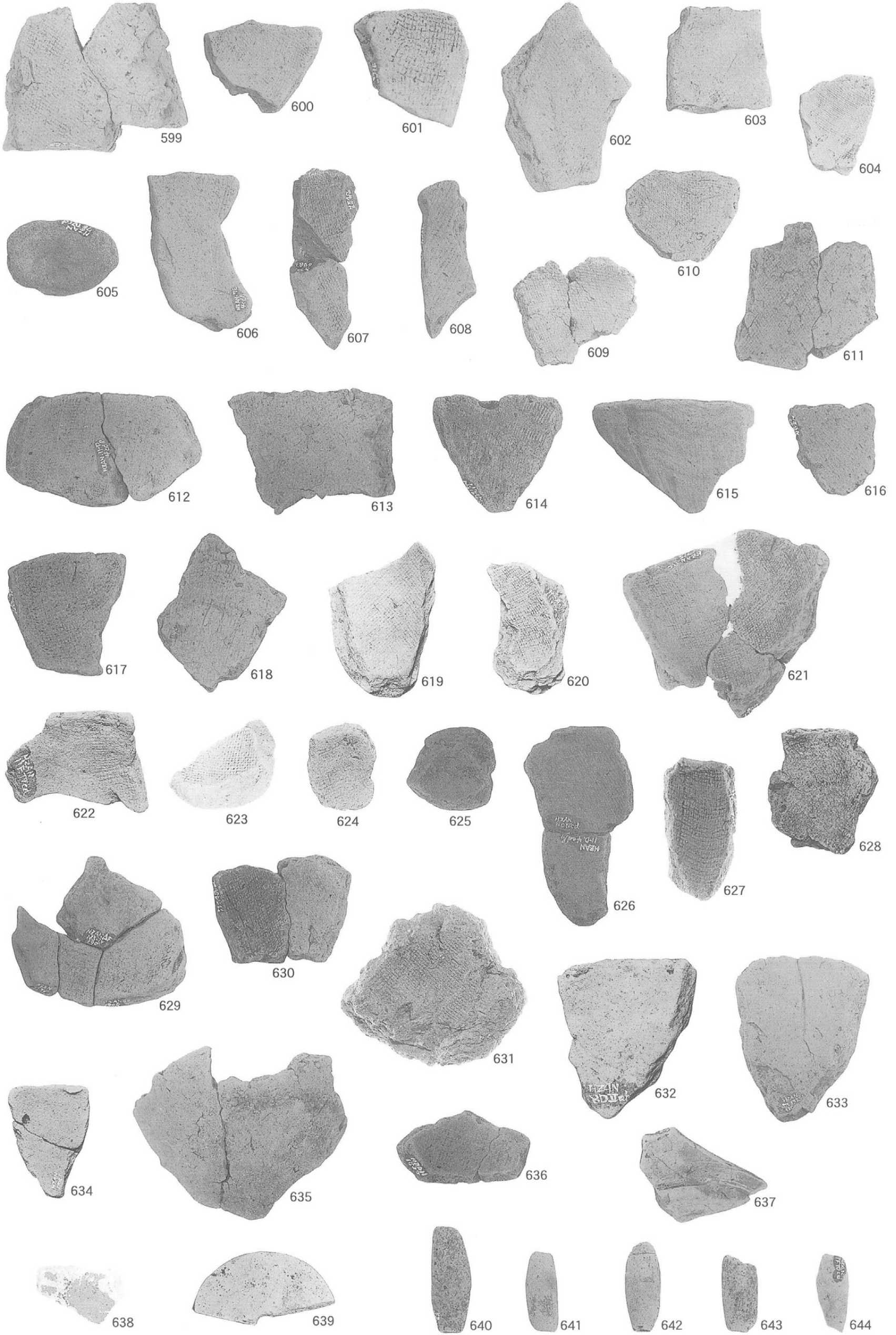


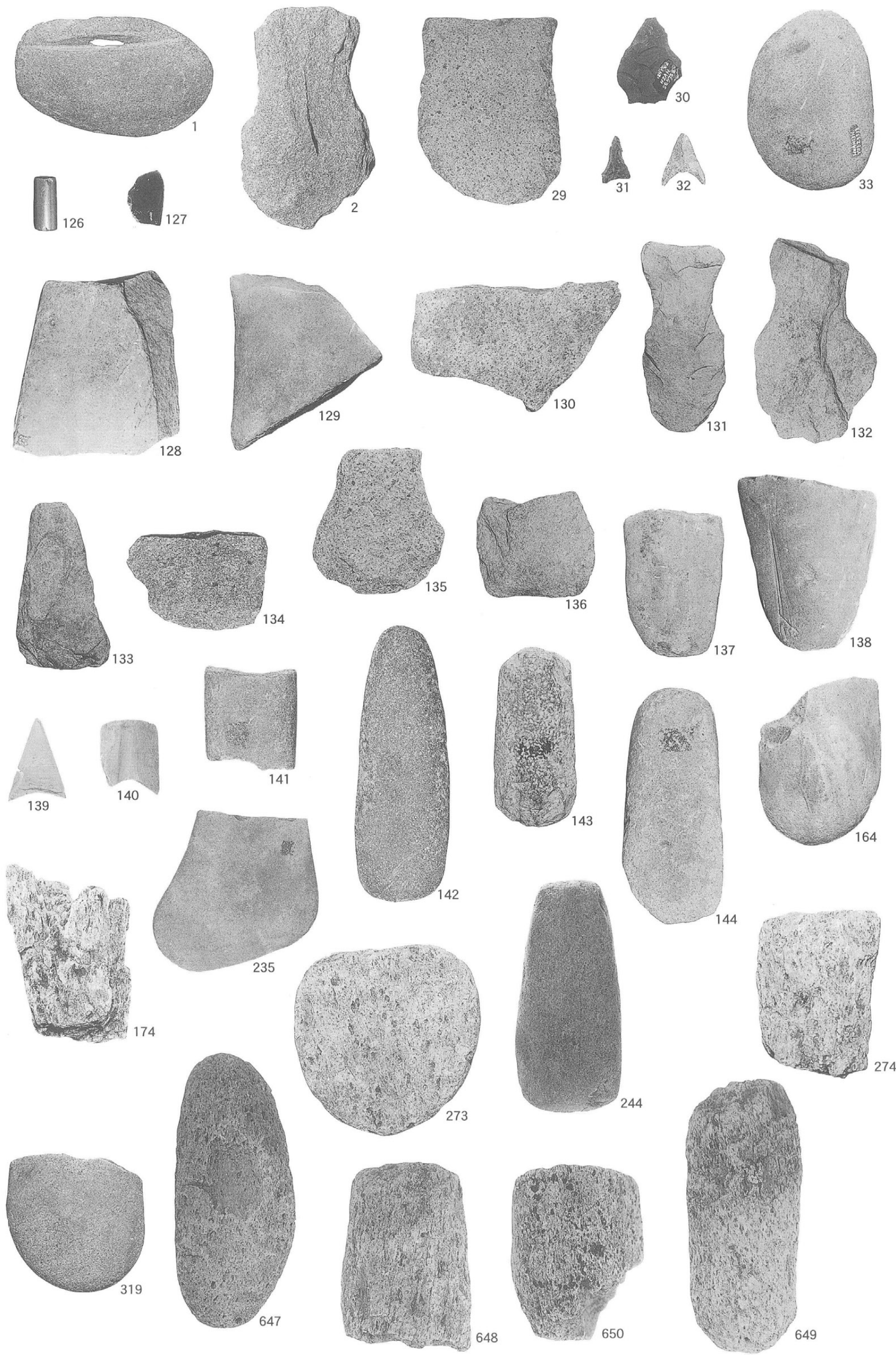
图版28

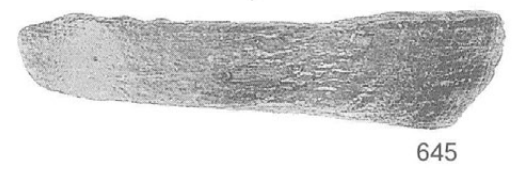
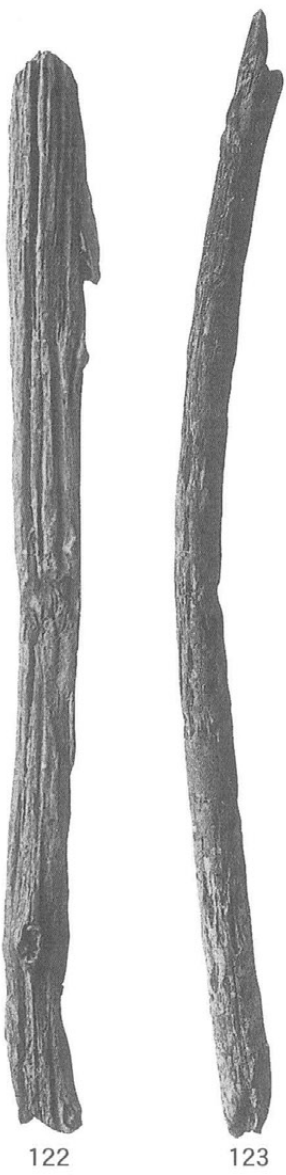
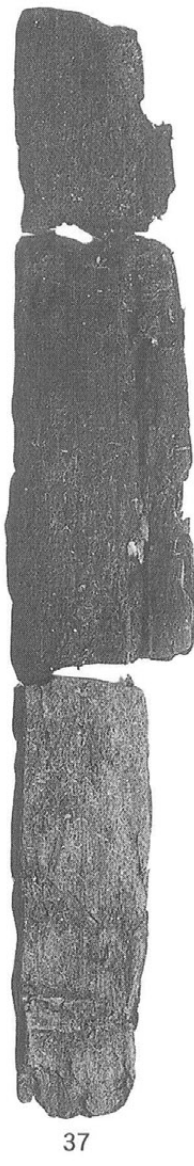
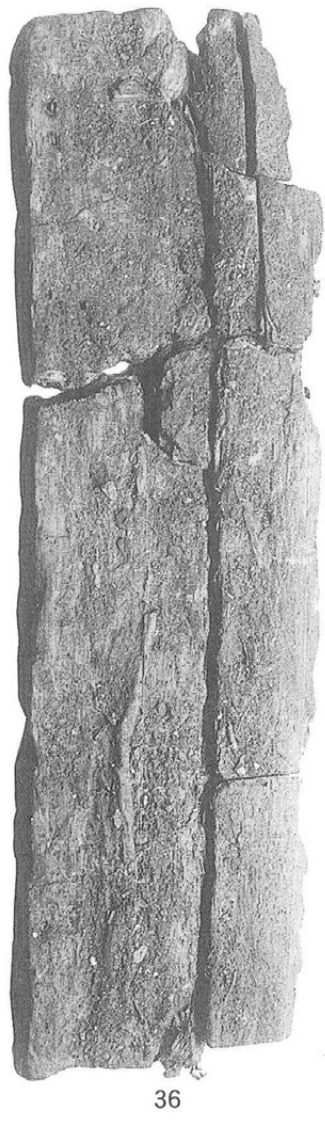




图版30







都城市文化財調査報告書50集

横市地区遺跡群

肱穴遺跡(1) 今房遺跡 馬渡遺跡(第1次)

2000年3月

編集 宮崎県都城市教育委員会

発行 〒885-8555 宮崎県都城市姫城町6街区21号
TEL(0986)23-9547 FAX(0986)24-1989

印刷 株式会社みやこ印刷

〒885-8555 宮崎県都城市大王町51-22
TEL(0986)23-1682 FAX(0986)22-1682