

39



40



41



42



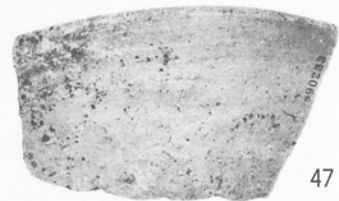
44



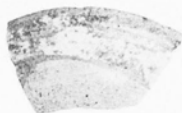
43



45



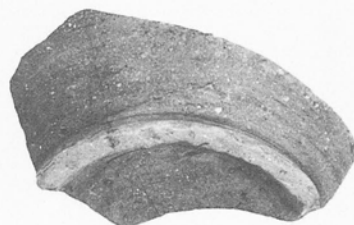
47



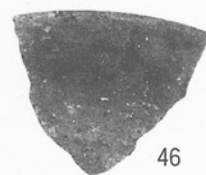
48



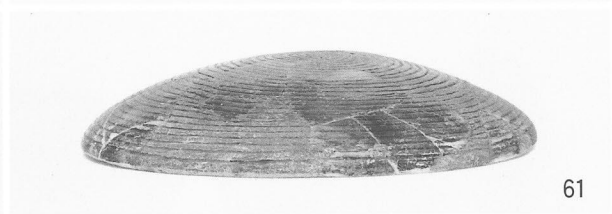
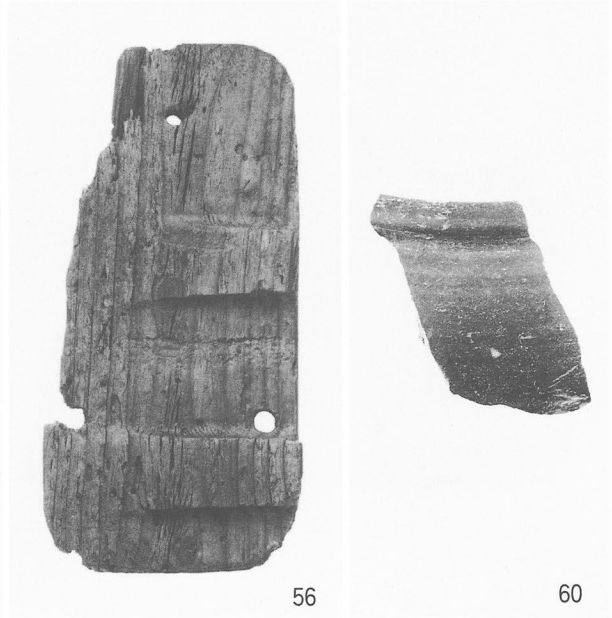
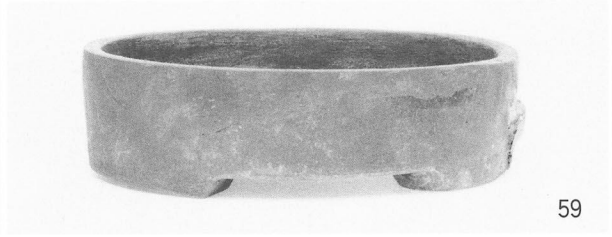
54

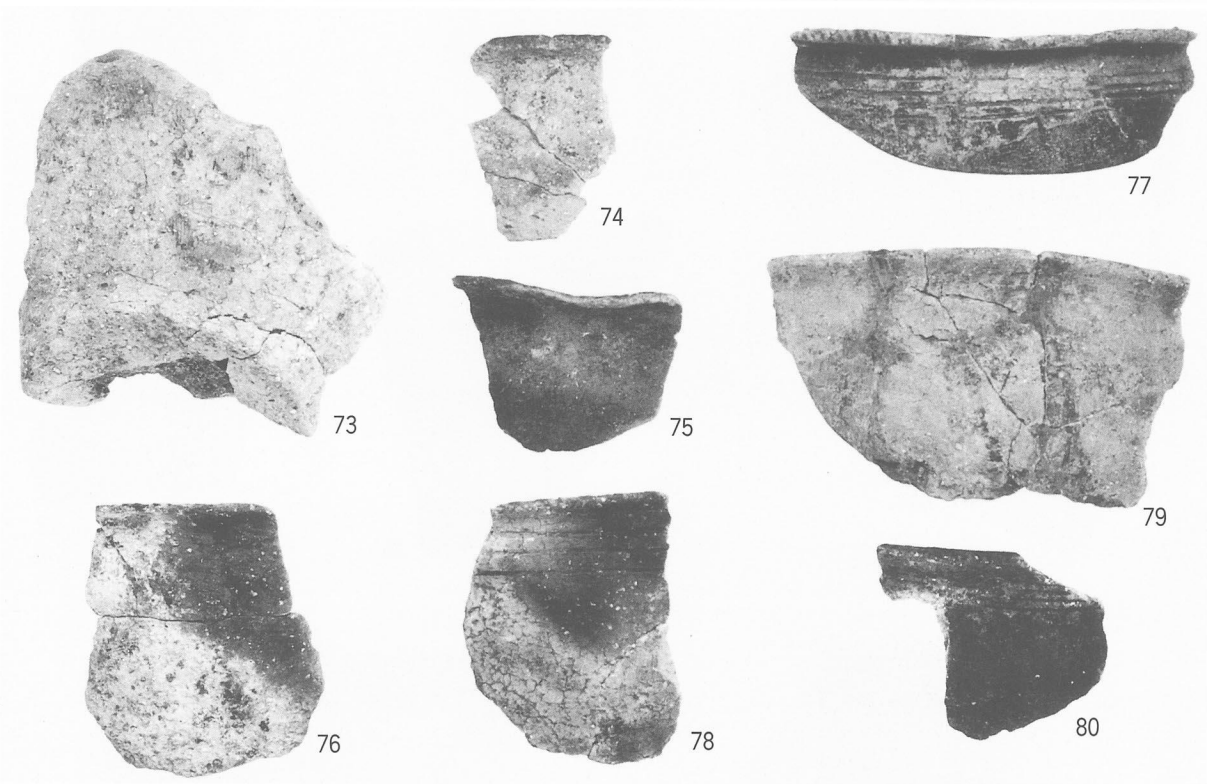
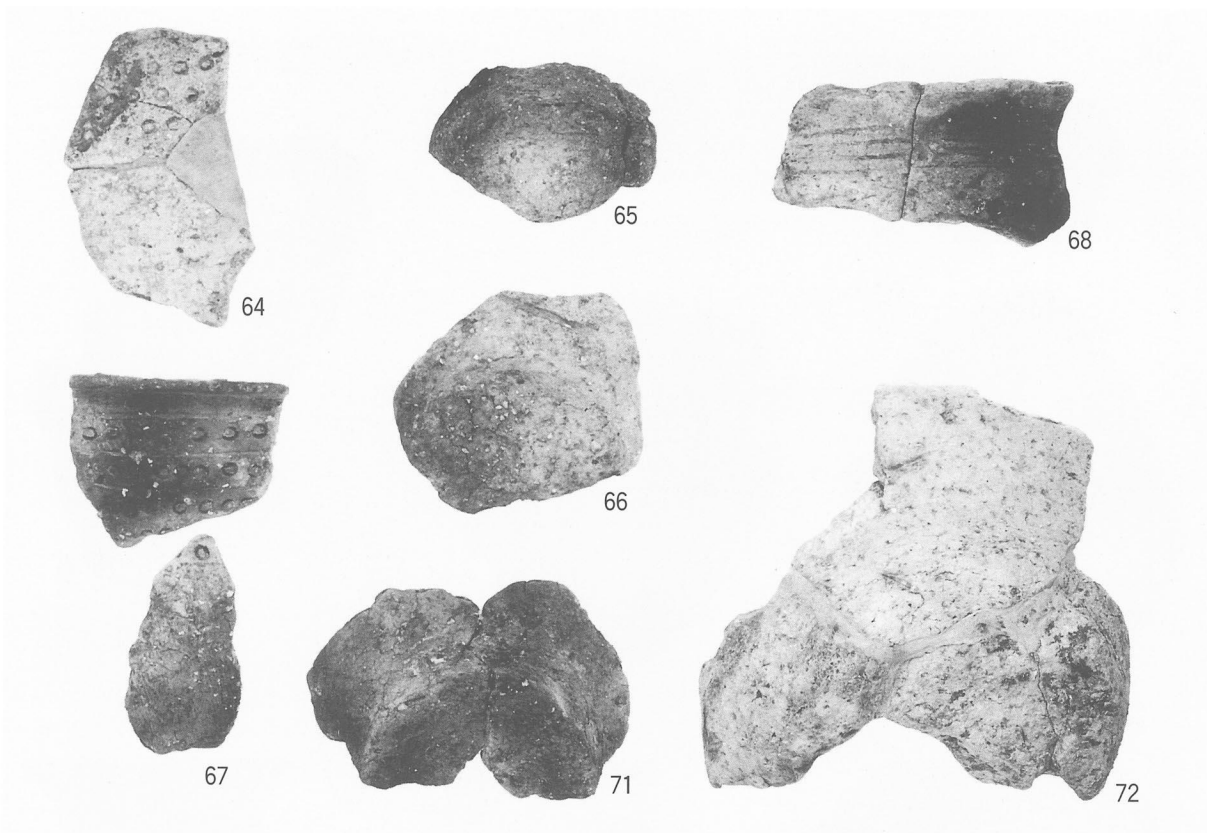


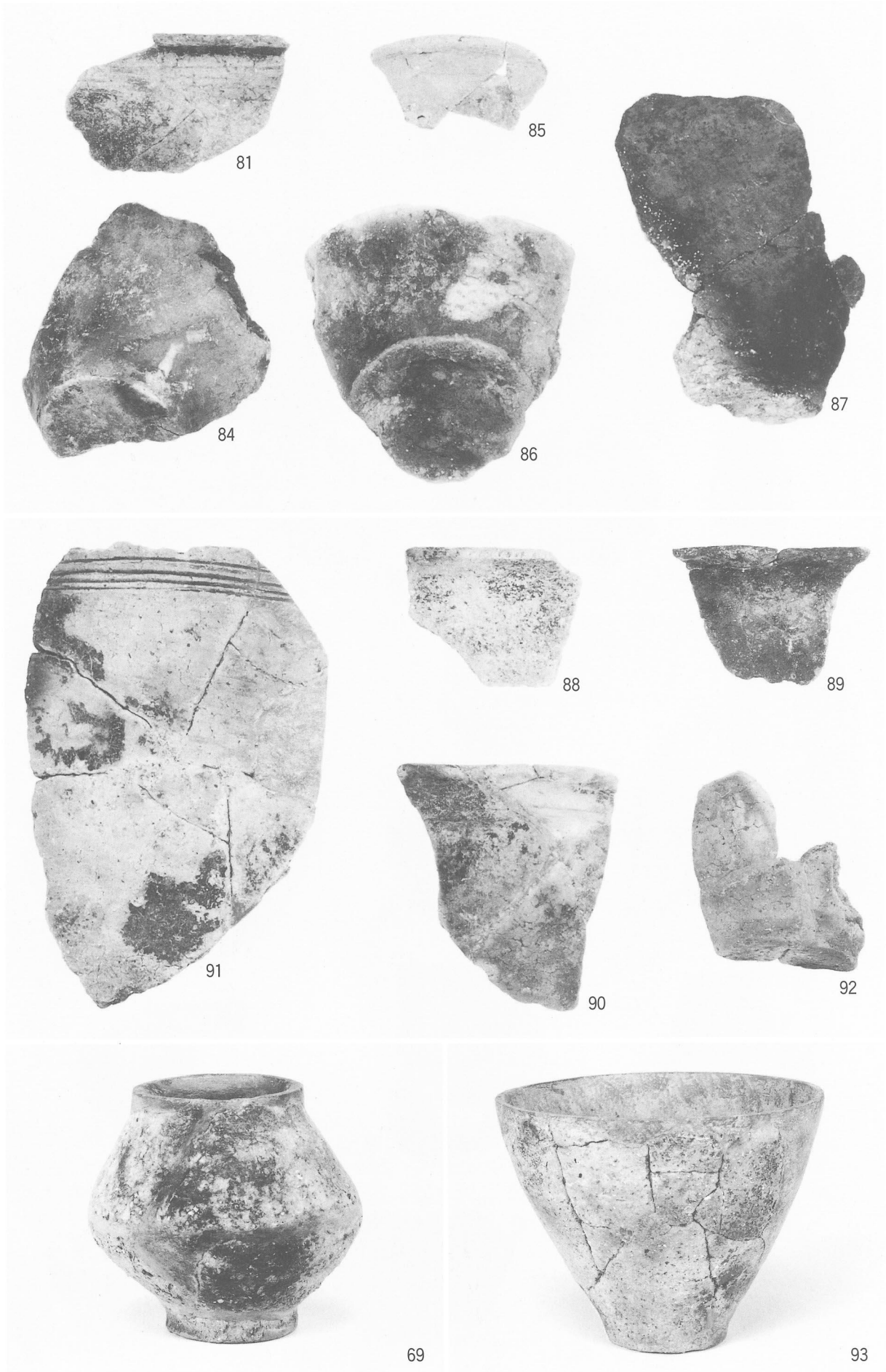
51



46









94



95



96



99



100



97



101



102



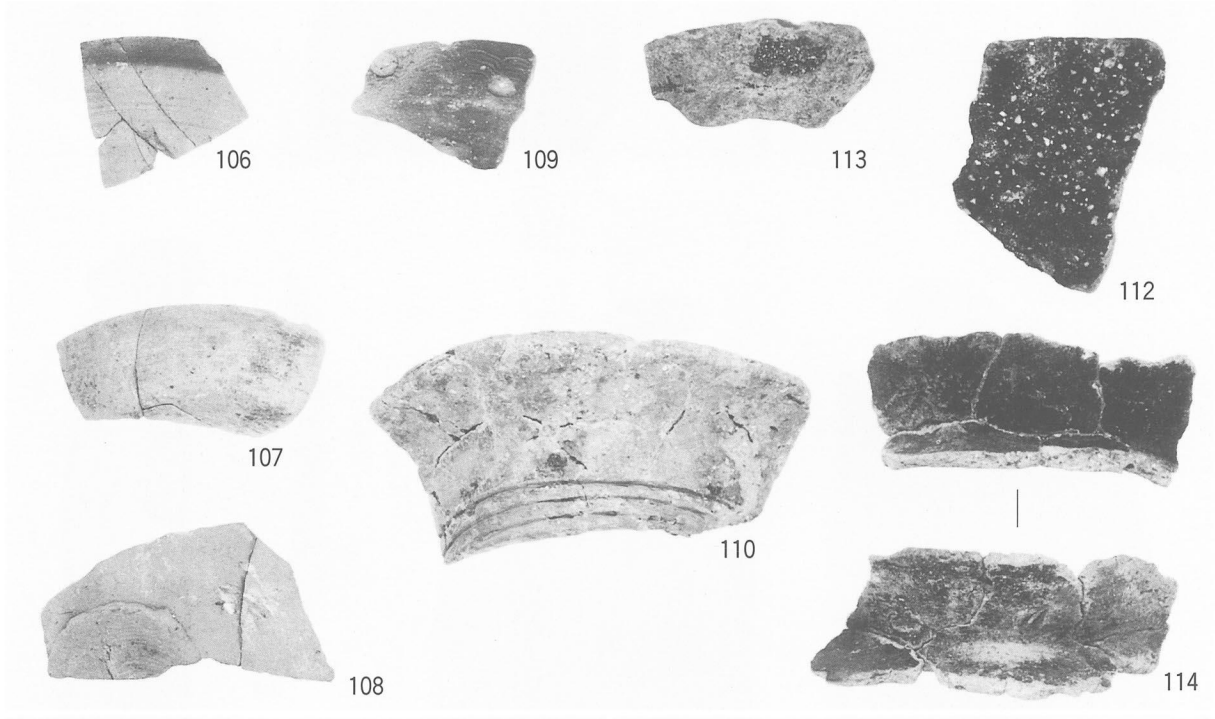
104

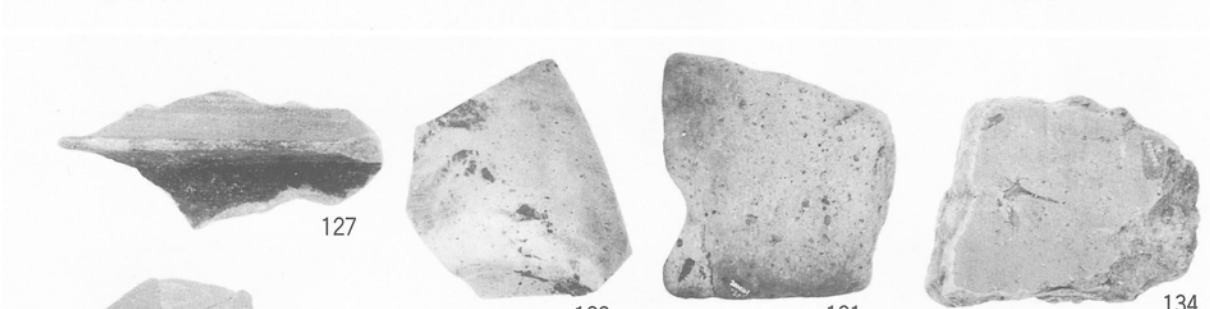


105



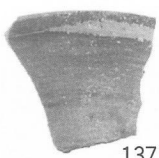
103



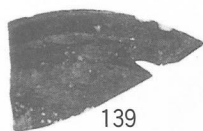




136



137



139



147



138



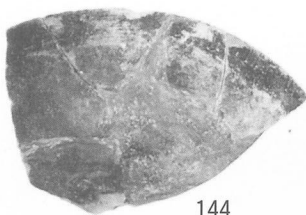
143



146



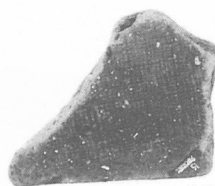
149



144



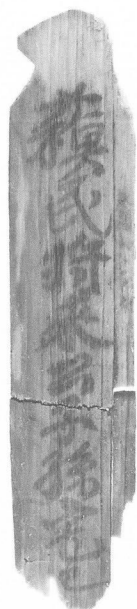
148



150



151



140



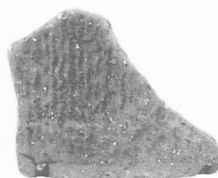
141



142



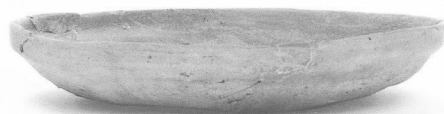
149



150



151



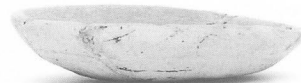
145



186



152



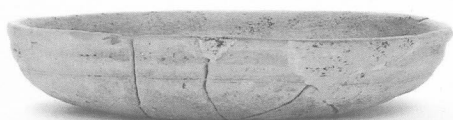
155



156



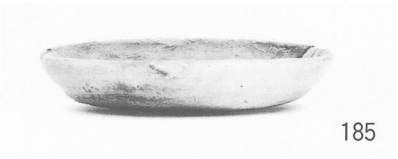
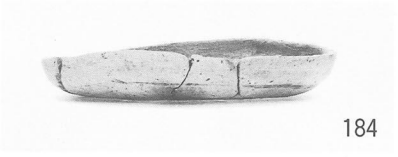
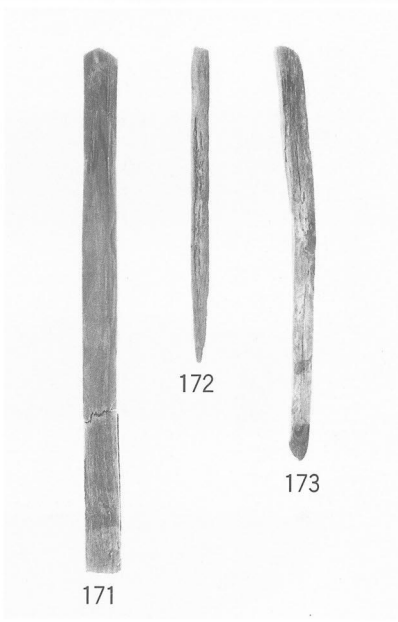
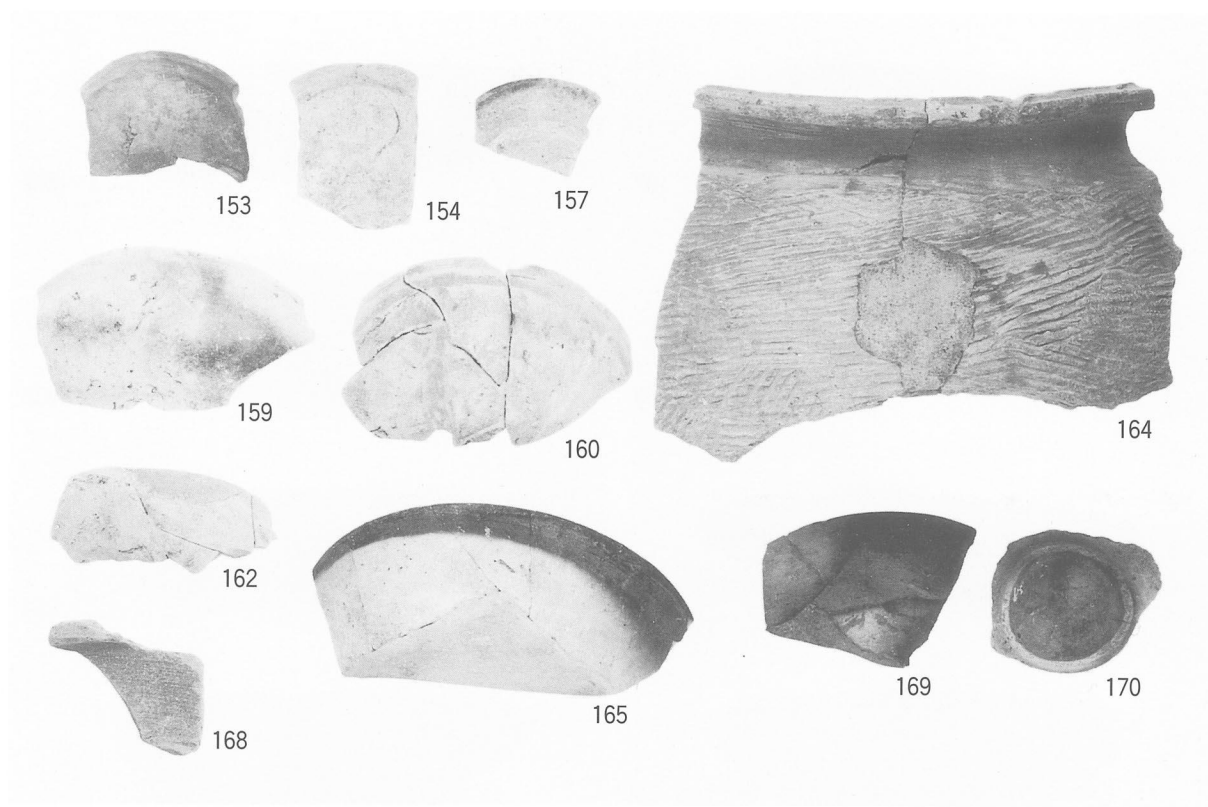
167

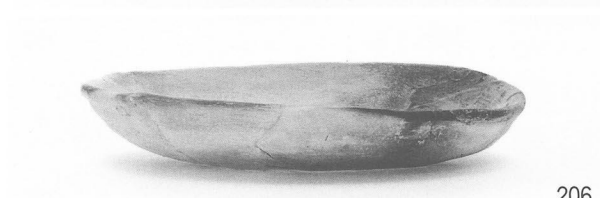
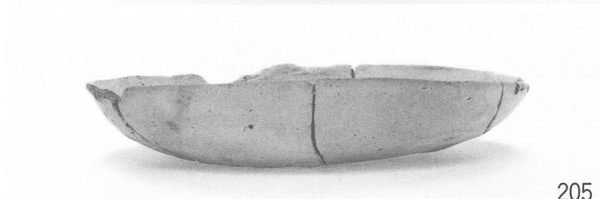
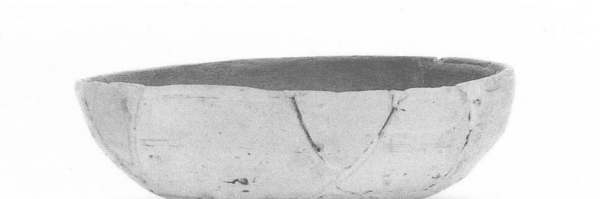
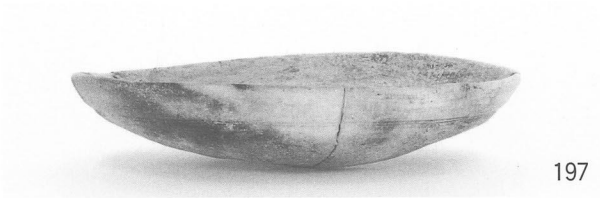


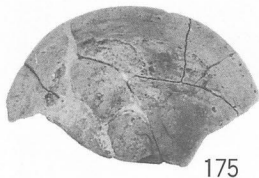
158



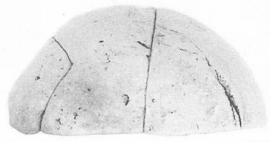
161







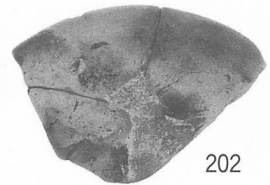
175



181



194



202



177



180



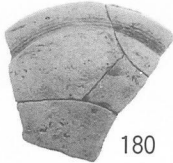
179



189



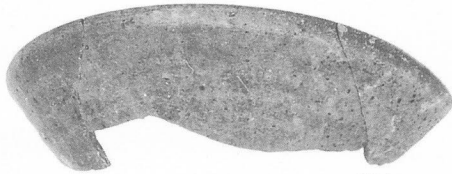
210



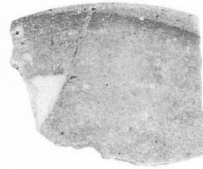
180



192



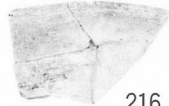
214



220



215



216



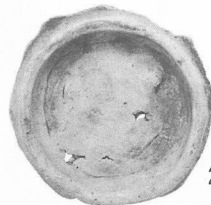
221



223



217



213



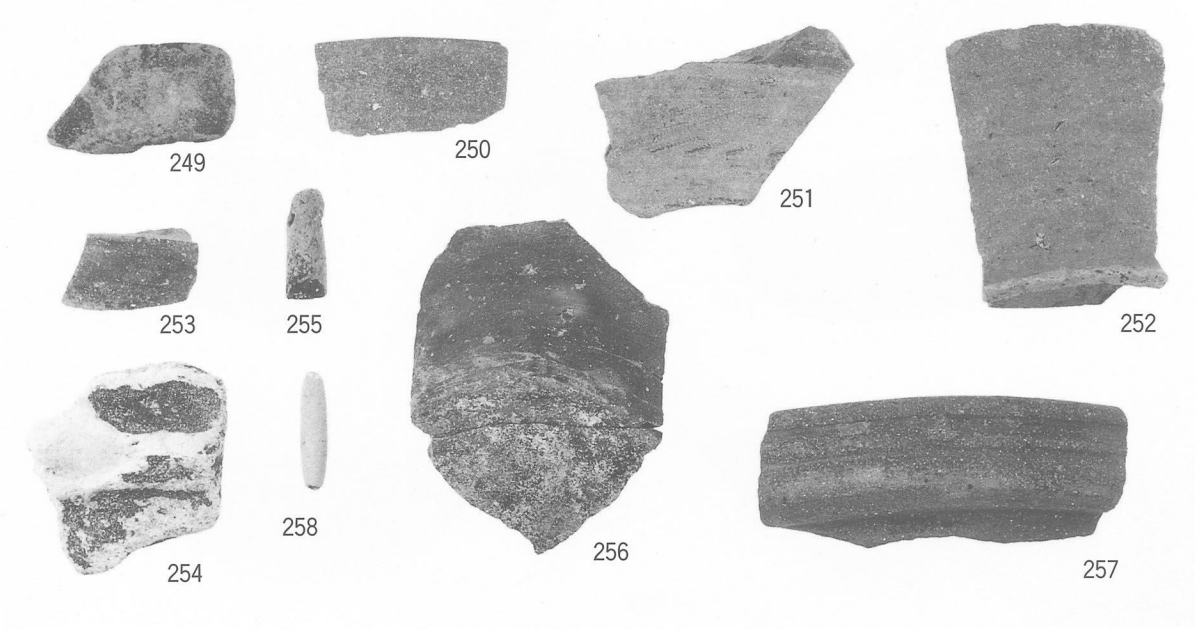
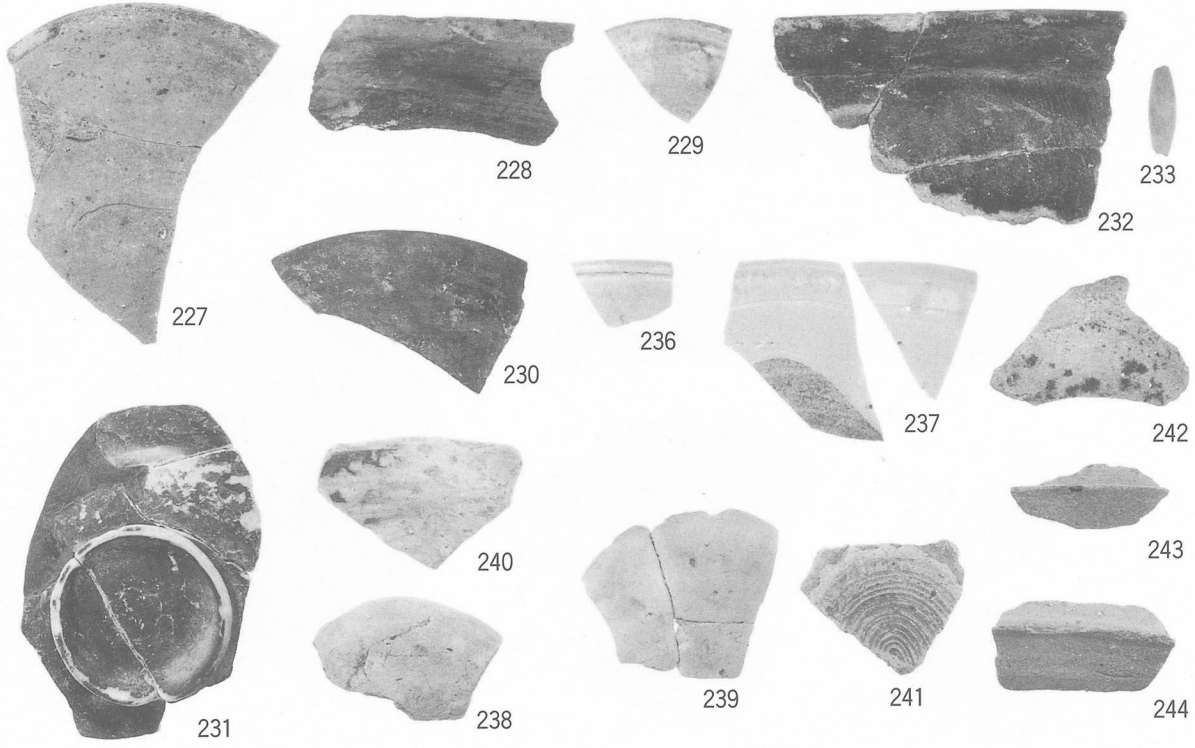
225

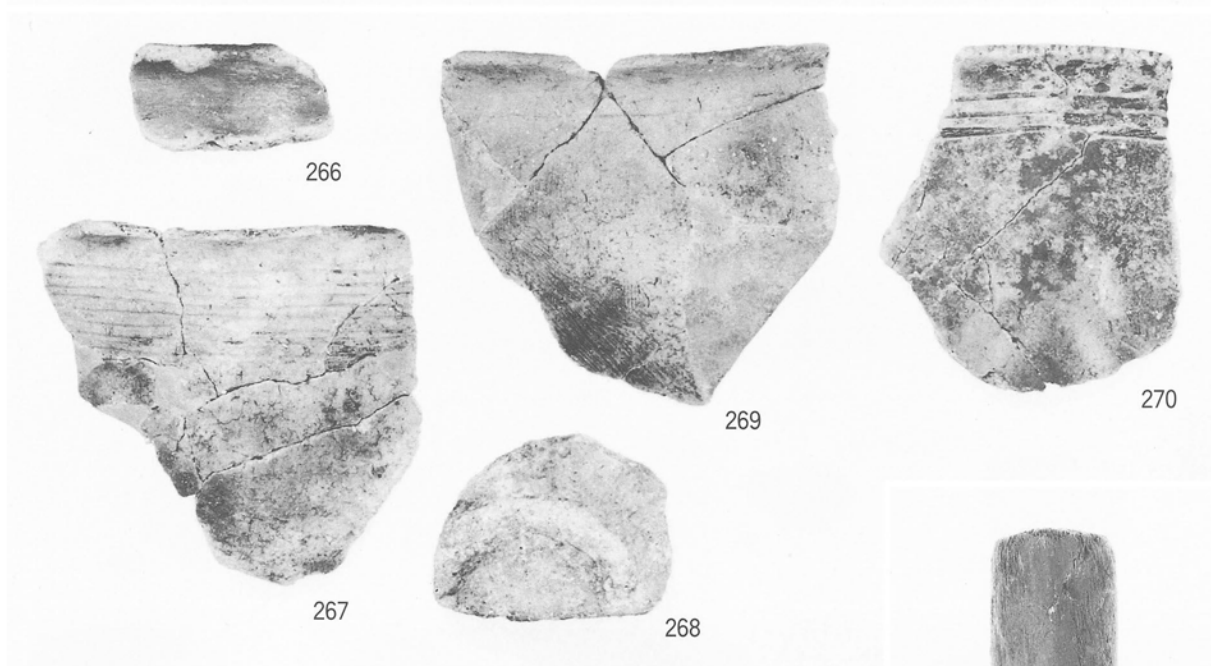
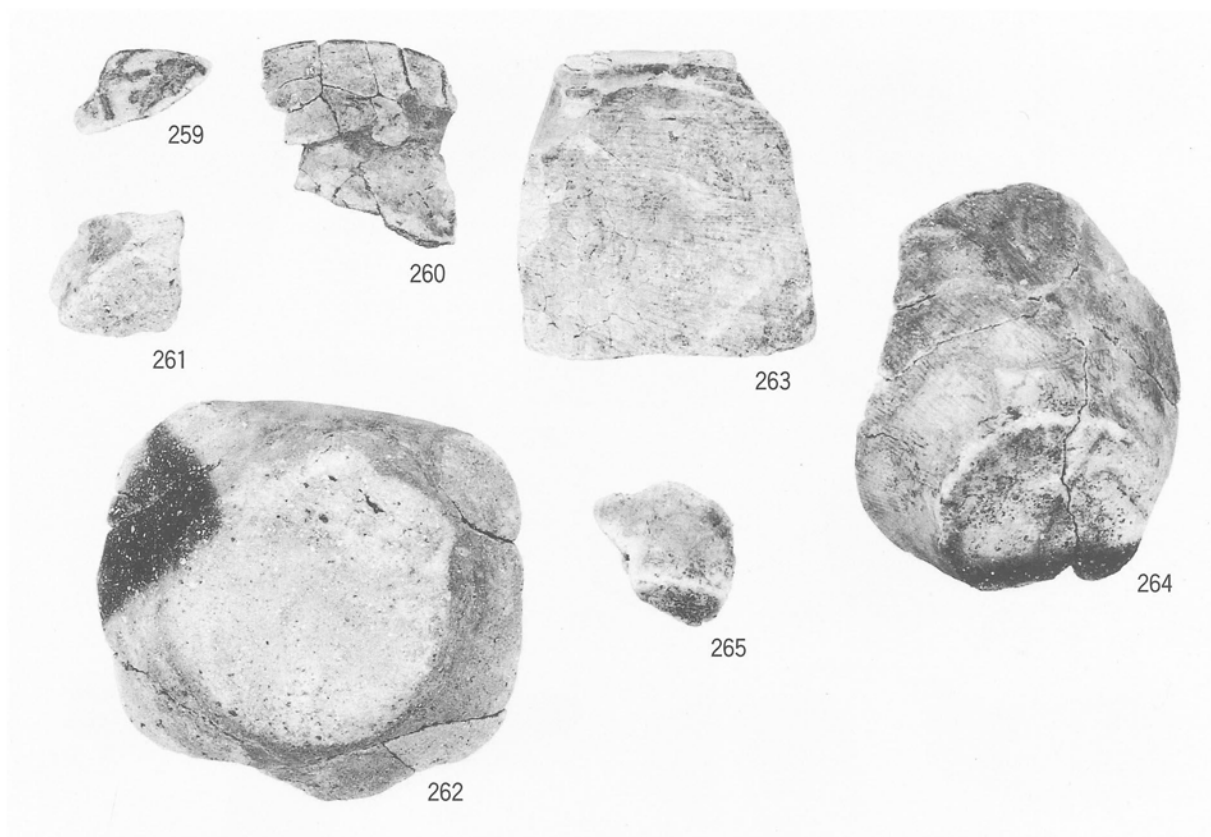


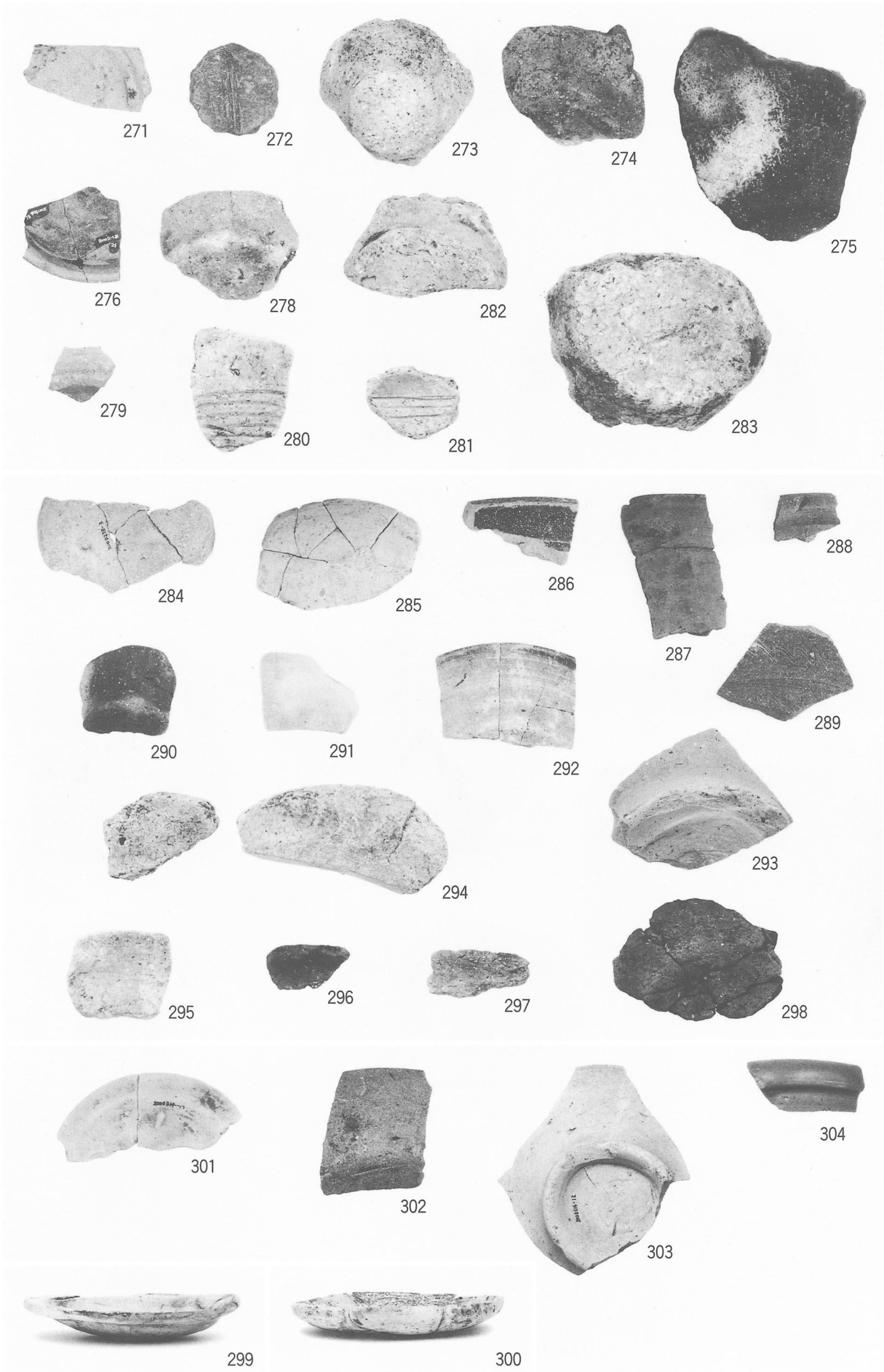
224

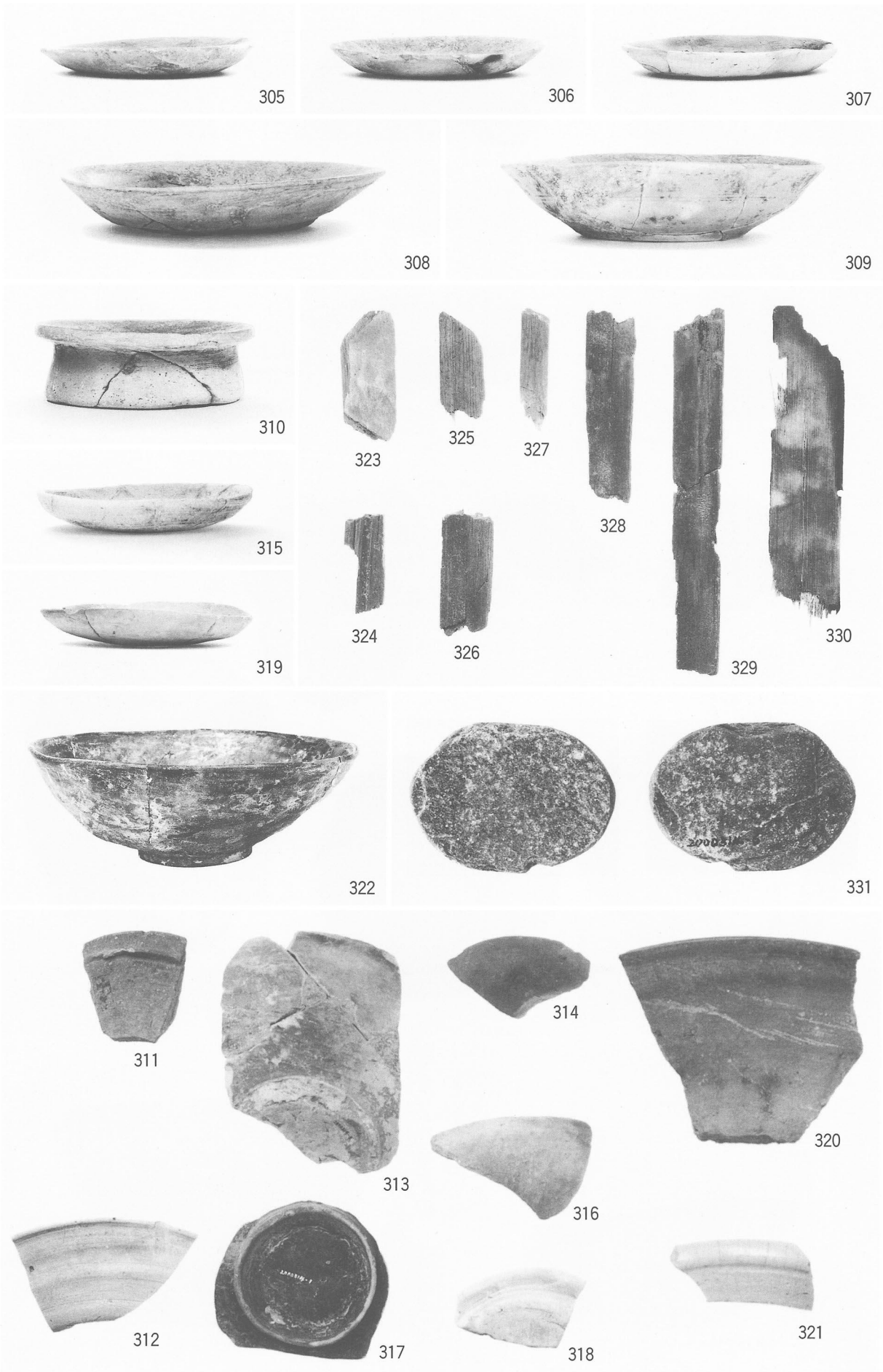


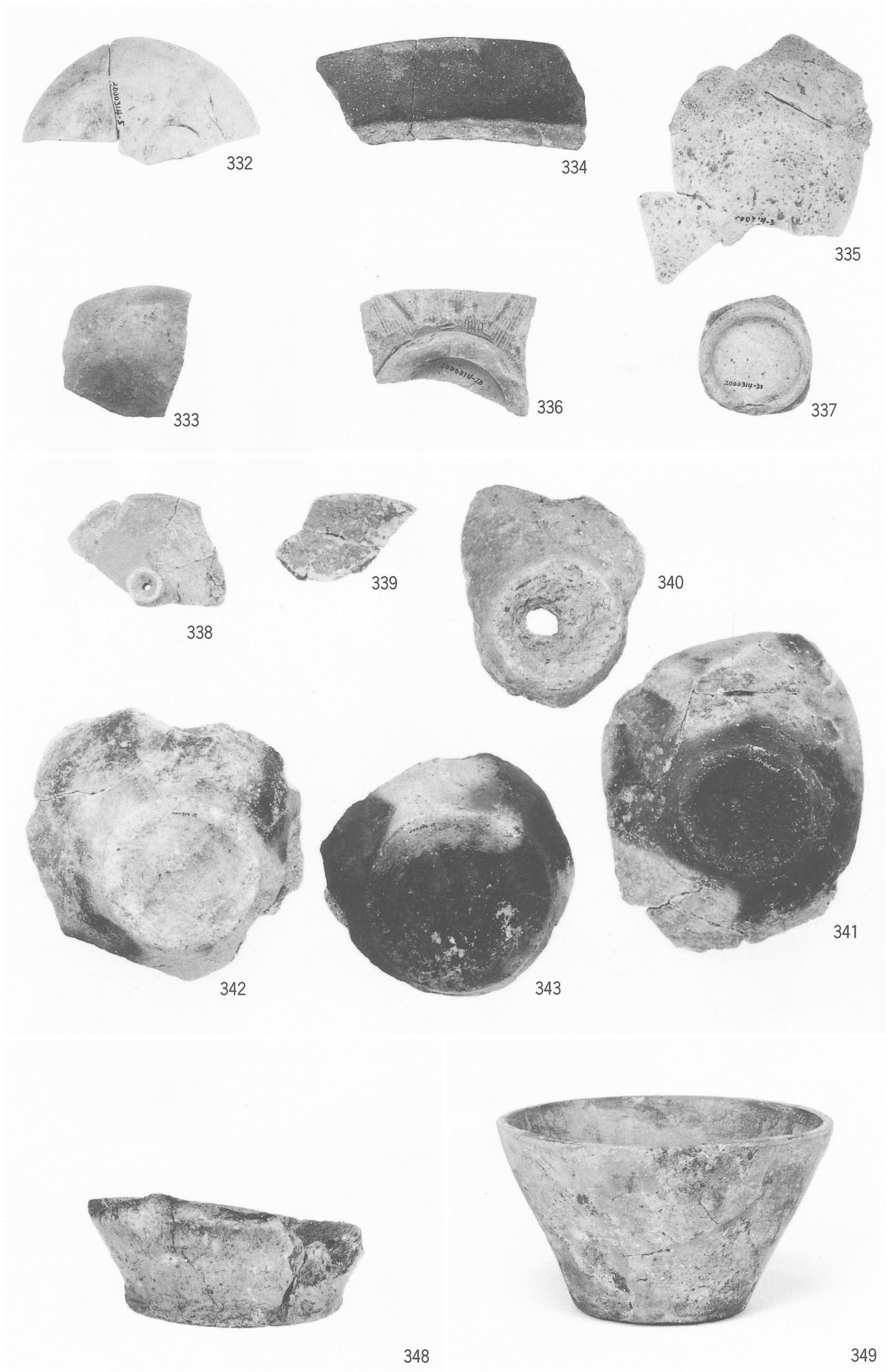
226





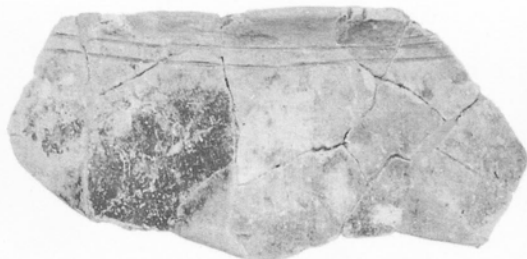








344



347



346



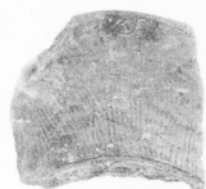
345



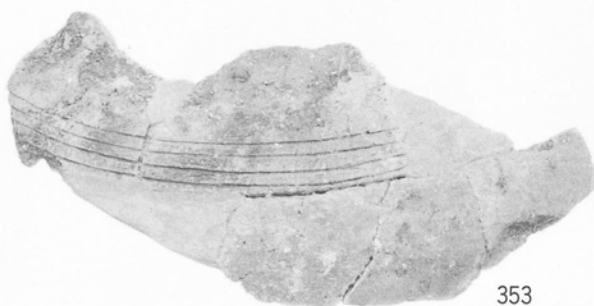
350



351



352



353



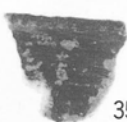
356



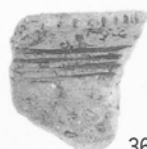
357



358



359



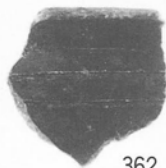
360



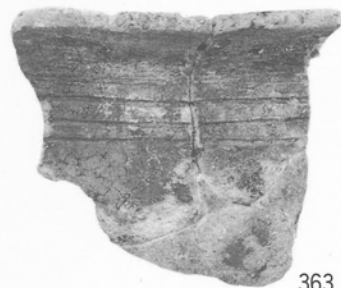
355



361



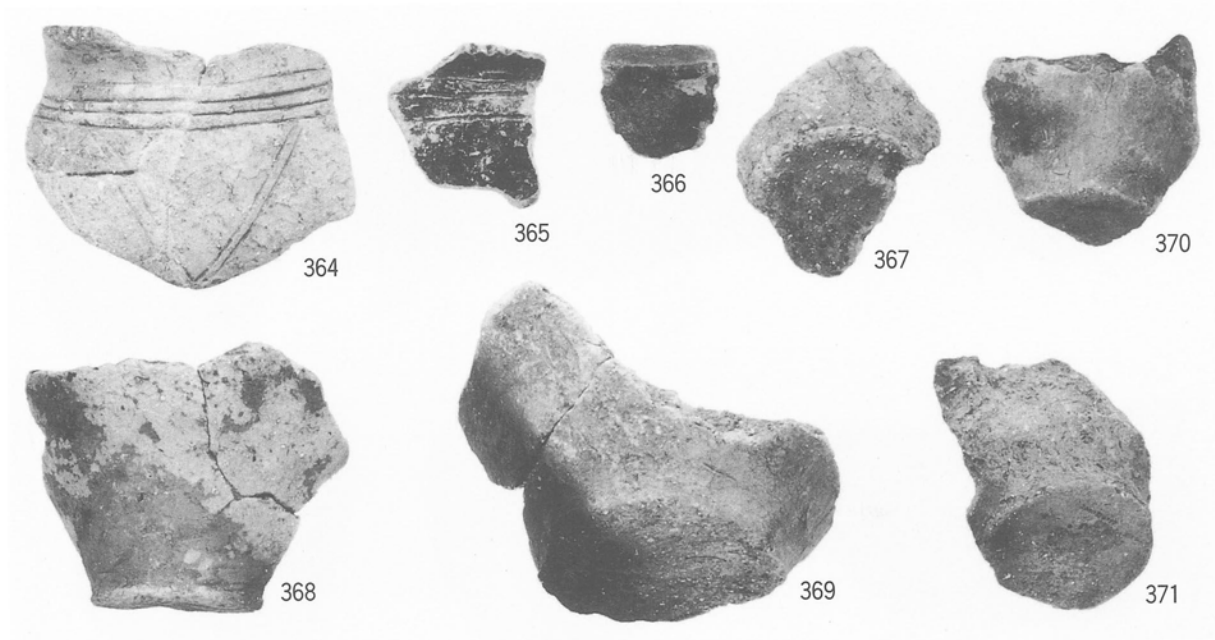
362



363



354





376



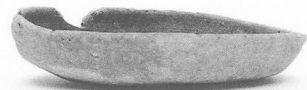
377



381



382



385



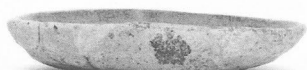
387



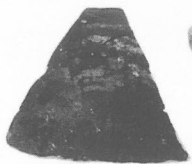
388



396



398



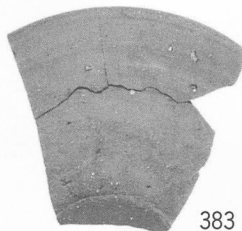
378



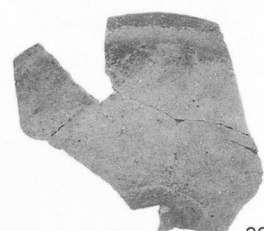
379



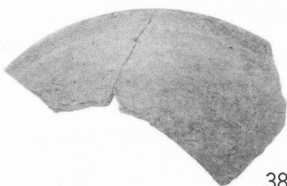
380



383



384



386



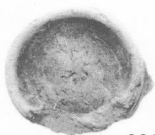
389



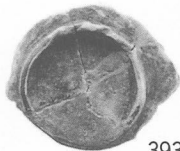
390



391



392



393



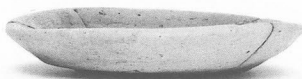
394



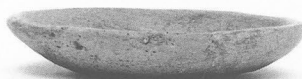
395



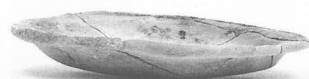
397



399



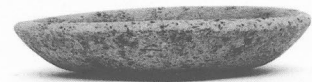
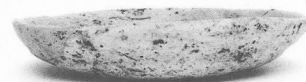
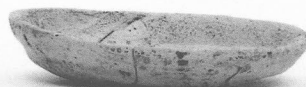
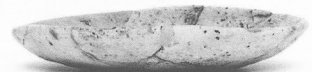
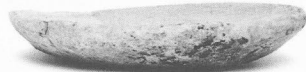
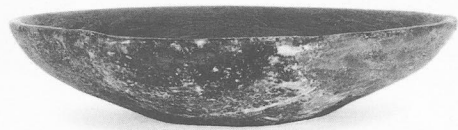
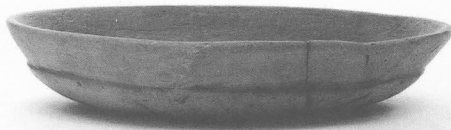
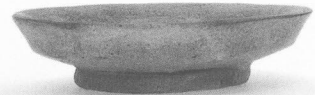
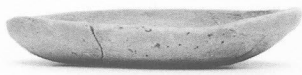
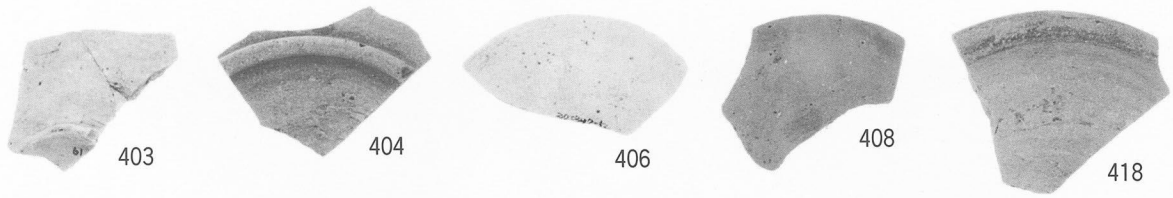
400

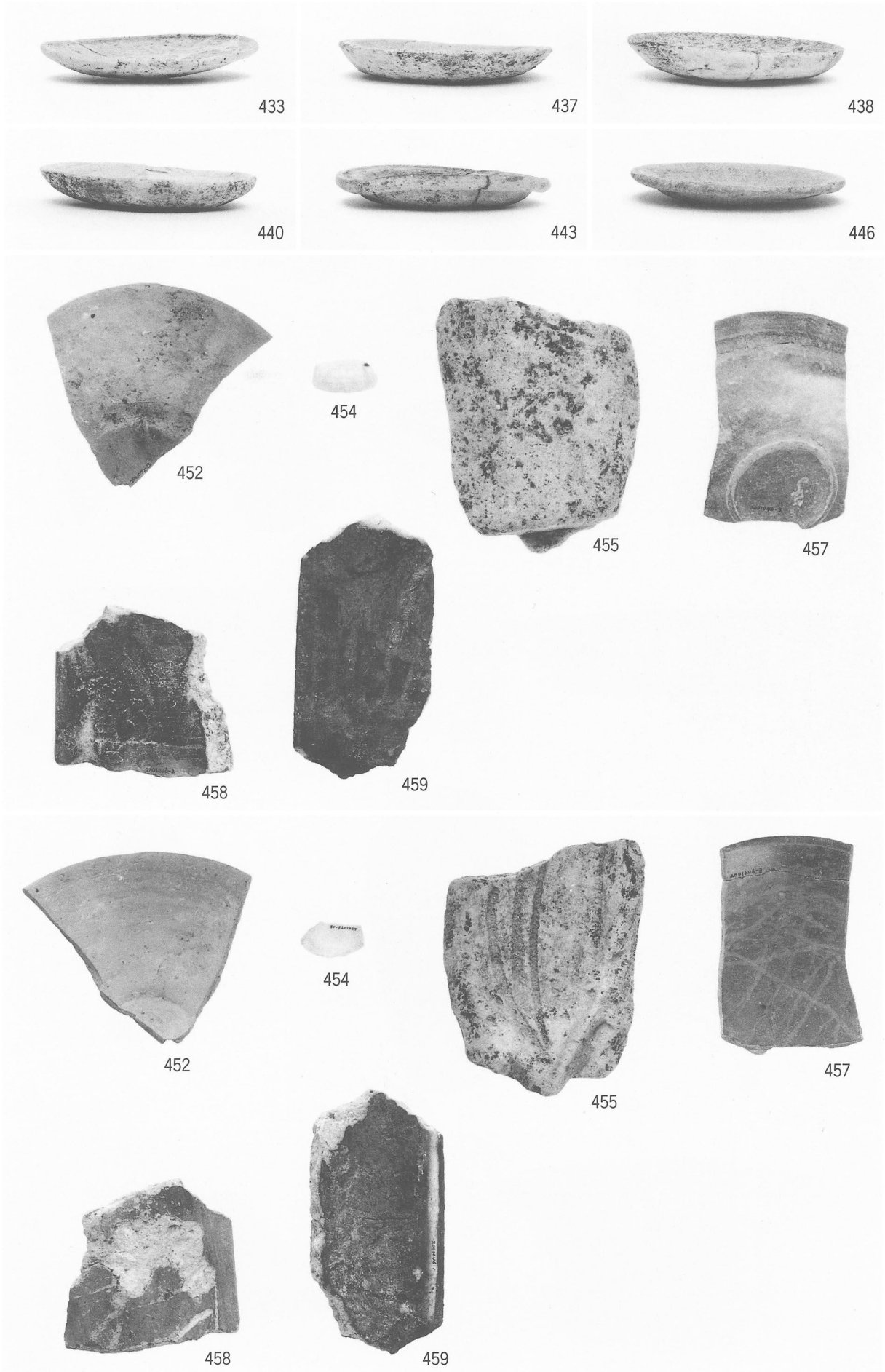


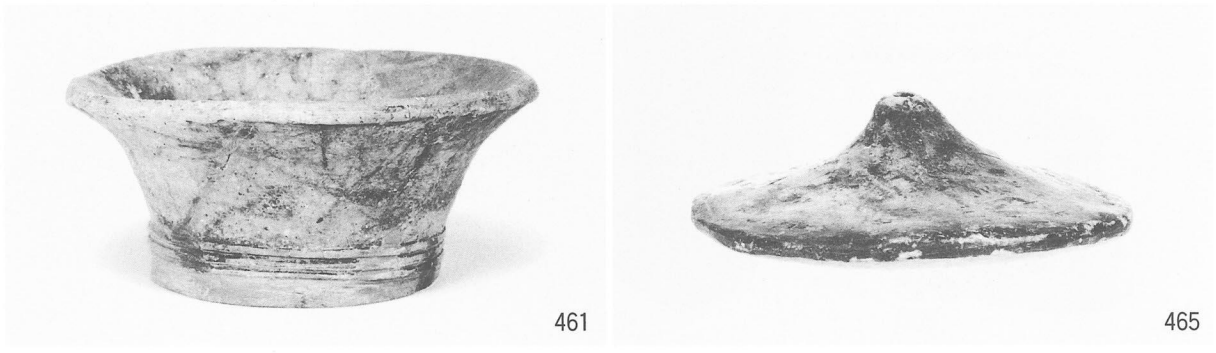
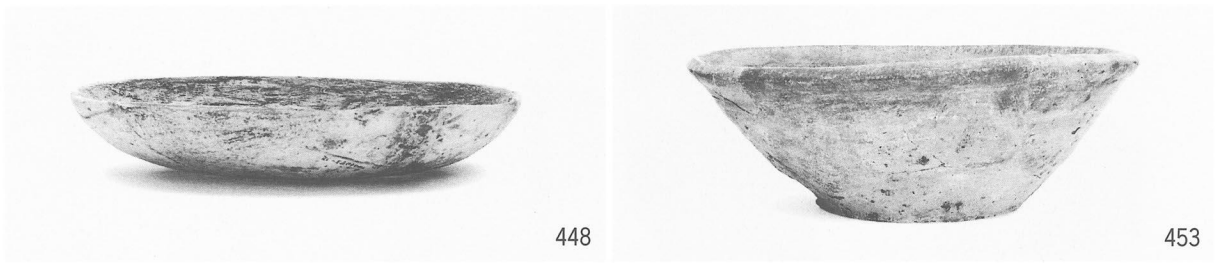
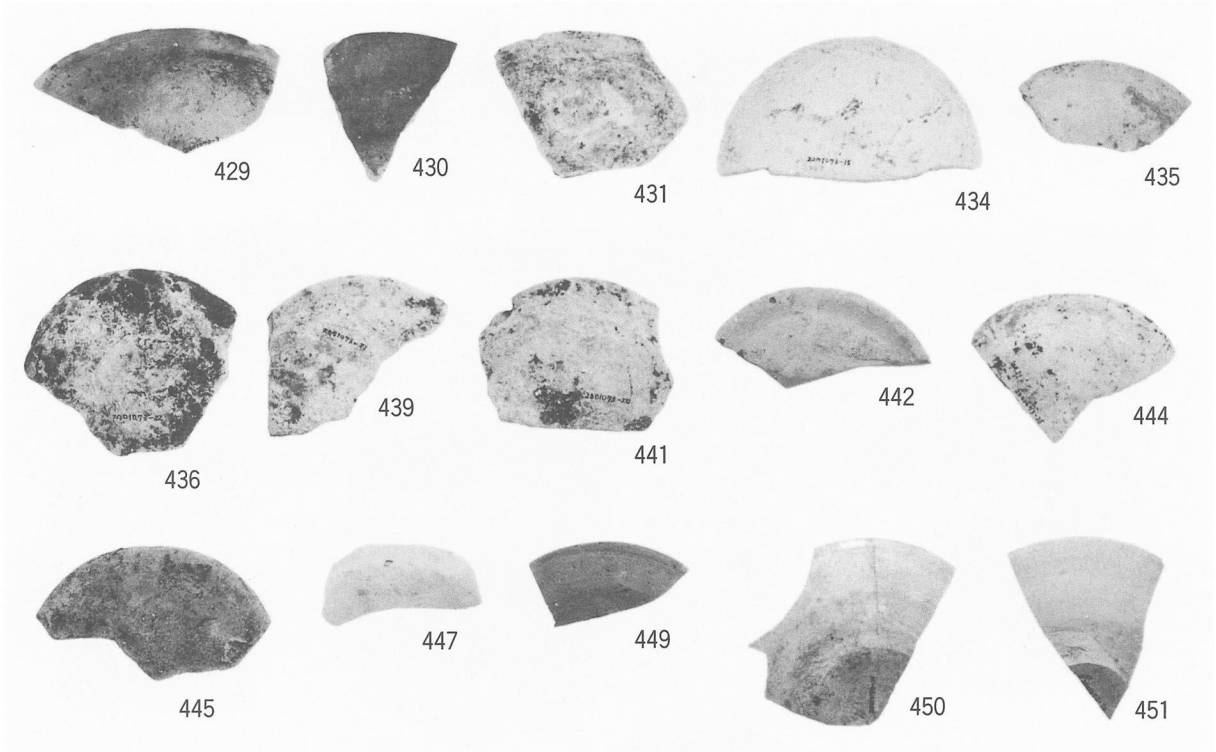
401

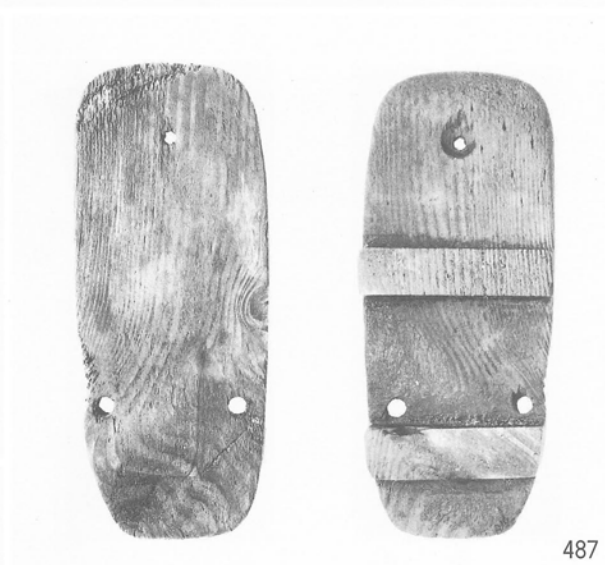
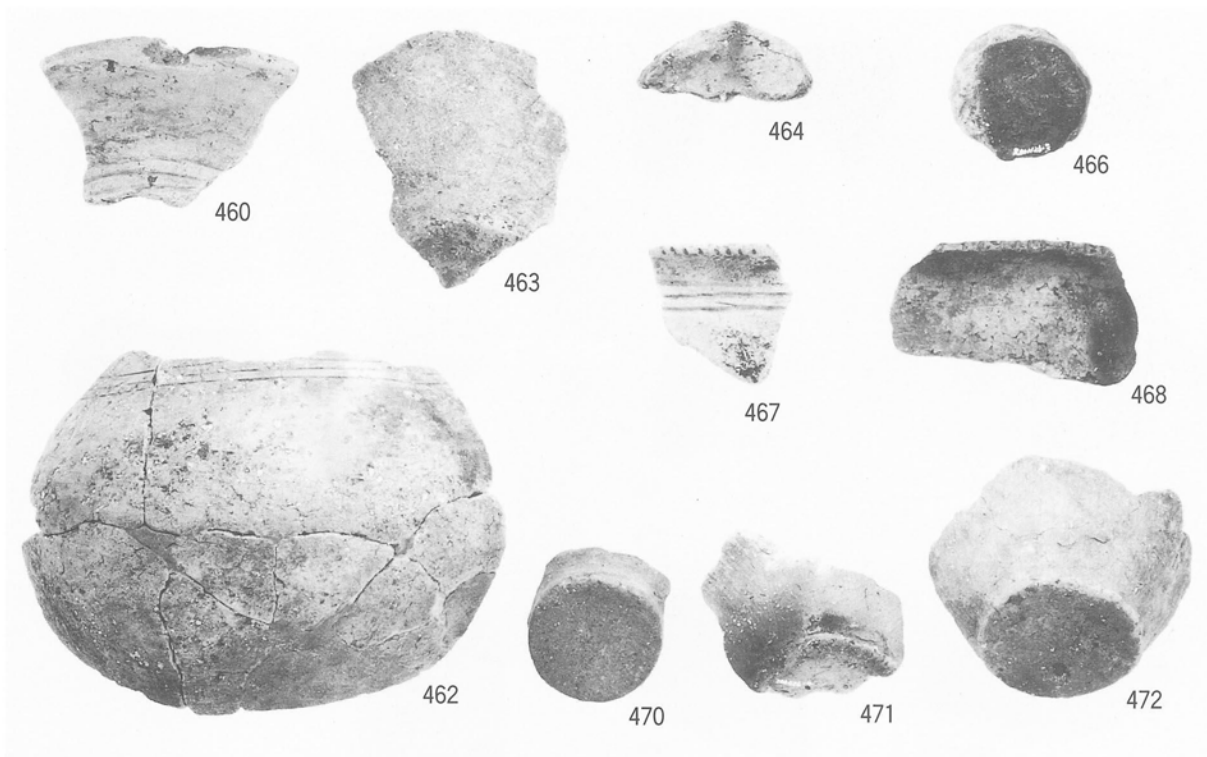


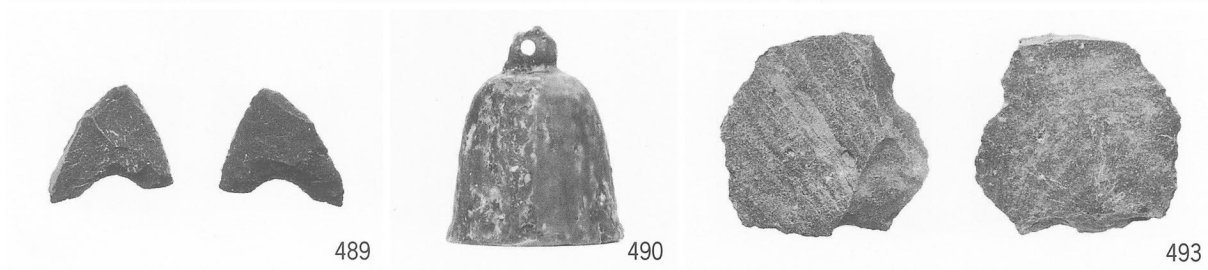
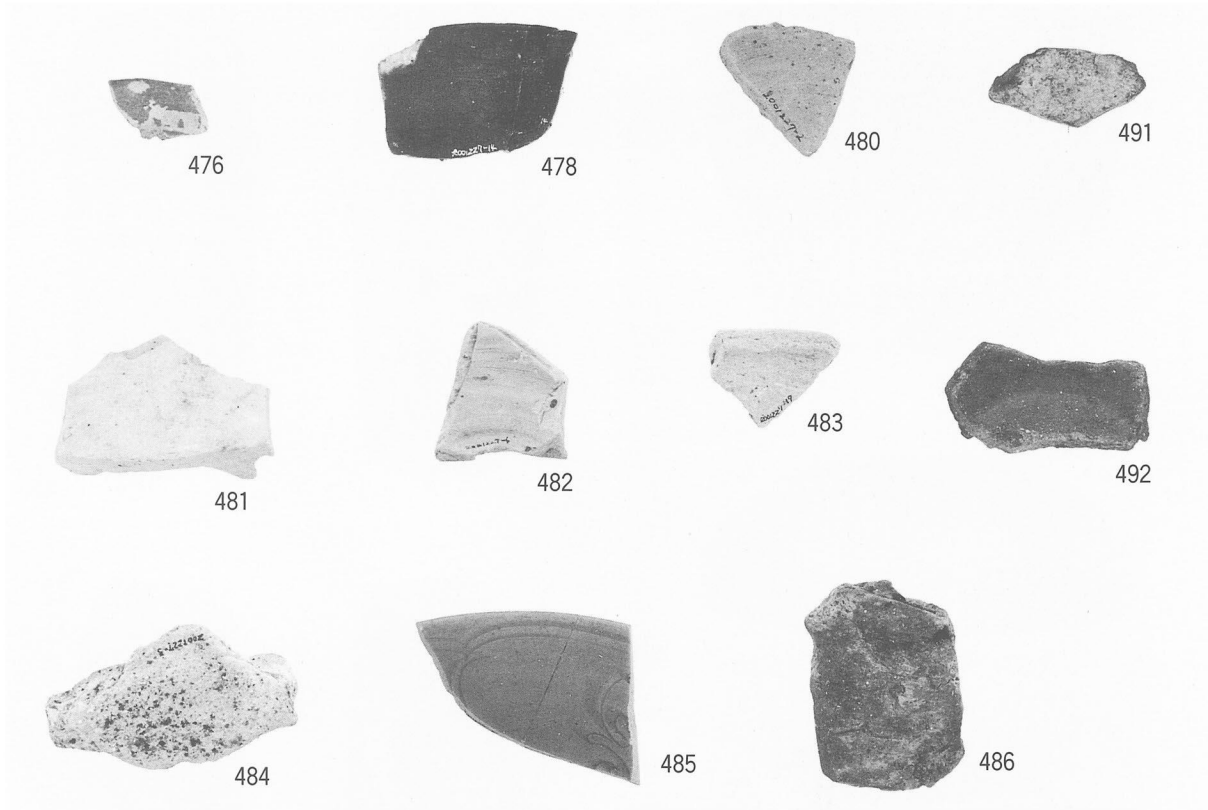
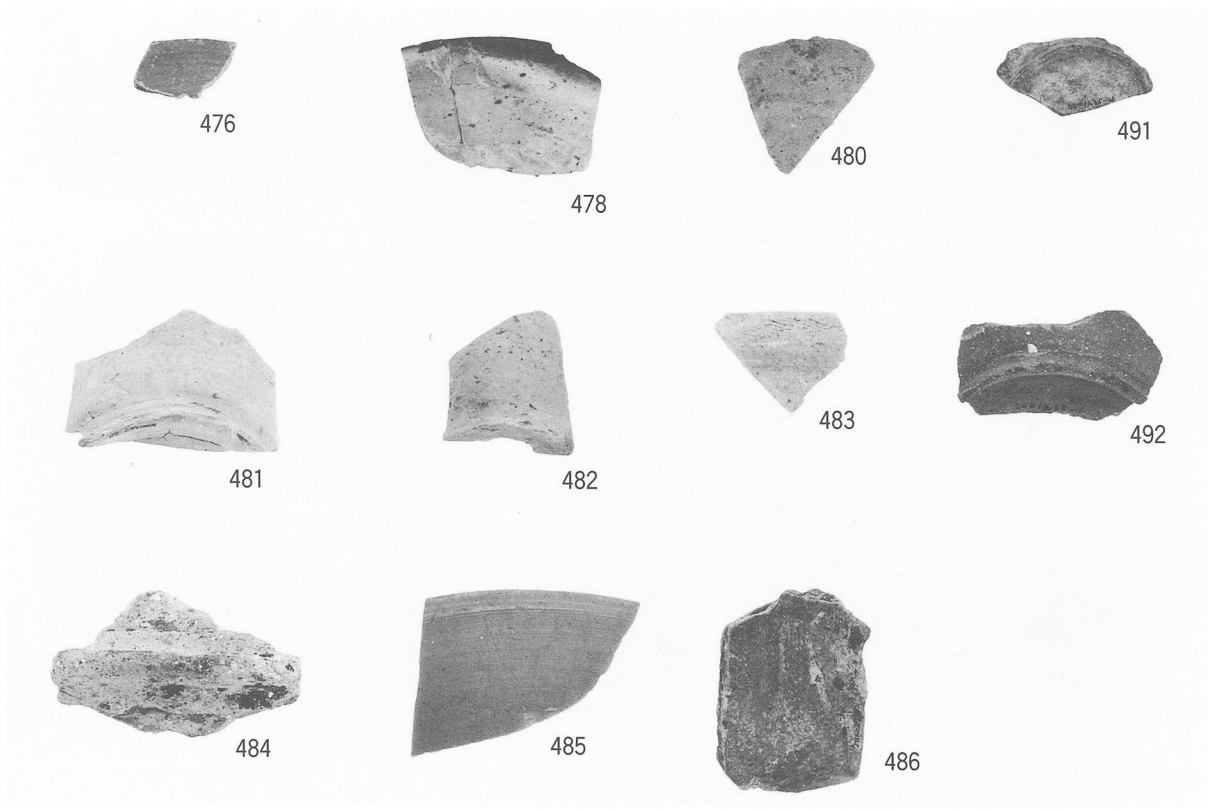
402

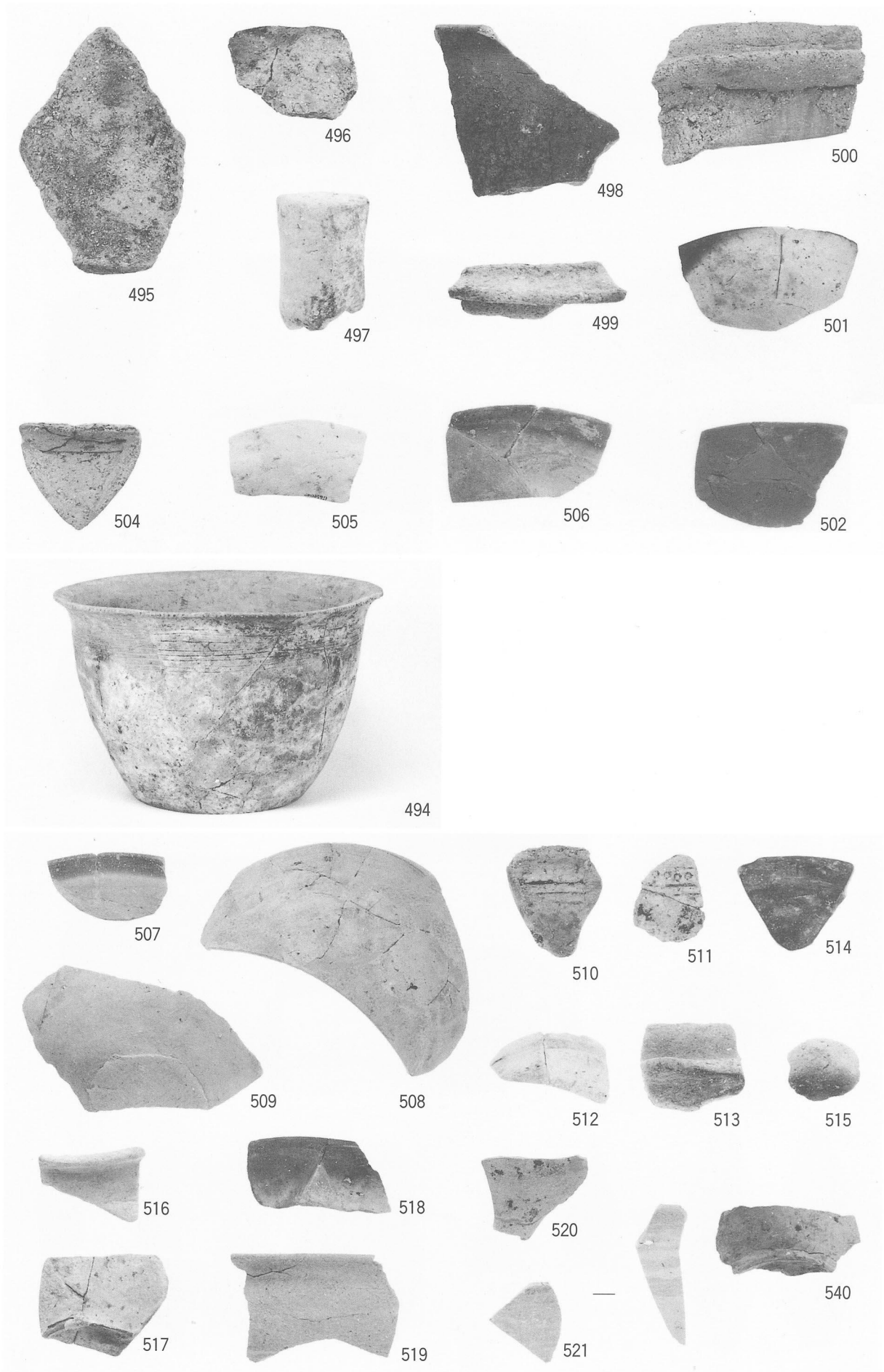


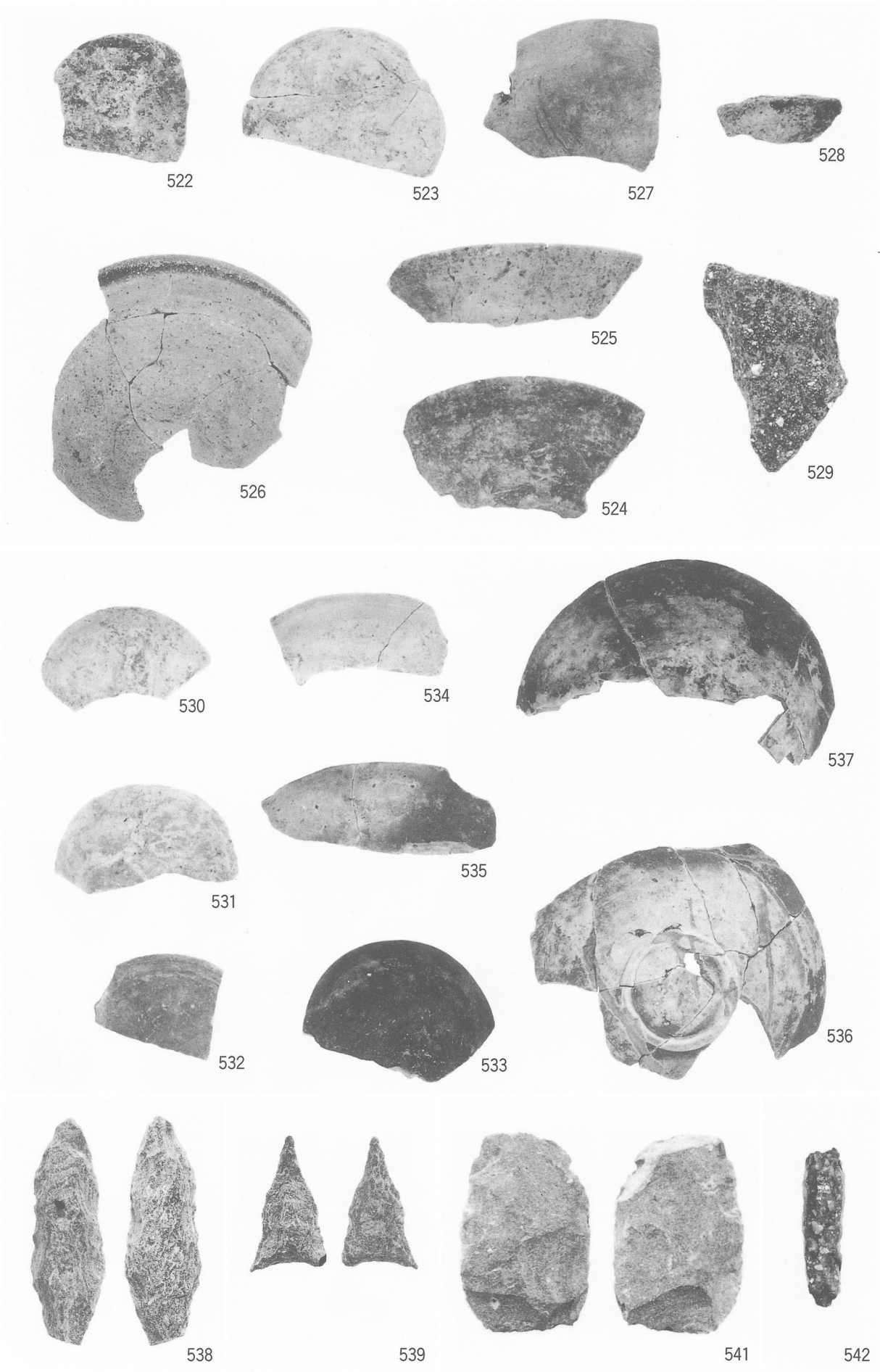












報 告 書 抄 録

ふりがな	ろくじょう
書名	六条遺跡
副書名	芦屋西部第一地区震災復興土地区画整理事業に伴う発掘調査報告書
巻次	
シリーズ名	兵庫県文化財調査報告
シリーズ番号	第256冊
編著者名	岡田章一・中川 渉・深江英憲・多賀茂治・山本 誠・甲斐昭光 小川良太・村上泰樹・大平 茂・別府洋二・寒川 旭・渡辺 昇
編集機関	兵庫県教育委員会埋蔵文化財調査事務所
所在地	〒652-0032 神戸市兵庫区荒田町2丁目1番5号 TEL078(531)7011
発行年月日	2003年3月14日

所収遺跡名	所在地	コード		北緯	東経	調査期間	調査面積 (m ²)	調査原因
		市町村	調査番号					
六条遺跡	兵庫県 芦屋市 清水町・ 前田町	28206	970296	34°	135°	1997. 8.20～9.5	132	芦屋西部 第一地区 震災復興 土地区画 整理事業
			980223	43′	18′	1999. 1.18～2.17	337	
			990233	38″	03″	10.27～12.20	495	
			2000109			2000. 4.10～5.19	634	
			2000206			6.5～7.6	456	
			2000238			8.28～9.6	192	
			2000314			10.30～11.29	1008	
			2000347			2001. 1.9～2.9	670	
			2000348			1.15～16	90	
			2000376			3.13～19	132	
			2001011			4.12～17	38	
			2001046			4.18～5.7	19	
			2001073			4.23～27	80	
			2001125			7.2	96	
			2001126			7.13～14	58	
			2001044			2002. 2.18～19	24	
			2001227			2.26～3.8	245	
2001235			3.18～25	57				
2002057			5.14～12.10	895				
所収遺跡名	種別	主な時代		主な遺構		主な遺物		
六条遺跡	集落跡	縄文時代晩期 弥生時代前期 古墳時代 奈良時代末 ～平安時代初 鎌倉時代 ～室町時代		方形周溝・溝 水田跡・足跡 礎石建物跡・掘立柱建物跡 園池・掘立柱建物跡		縄文土器 弥生土器・弓・平鋏 須恵器・土師器 須恵器・瓦 土師器・須恵器・瓦器 蘇民将来札		

兵庫県文化財調査報告 第256冊

芦屋市

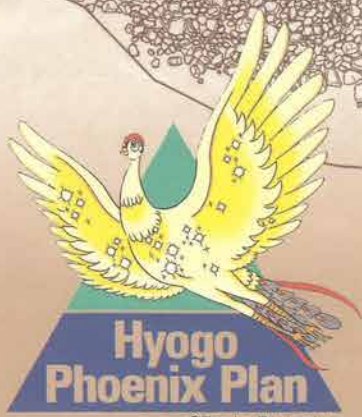
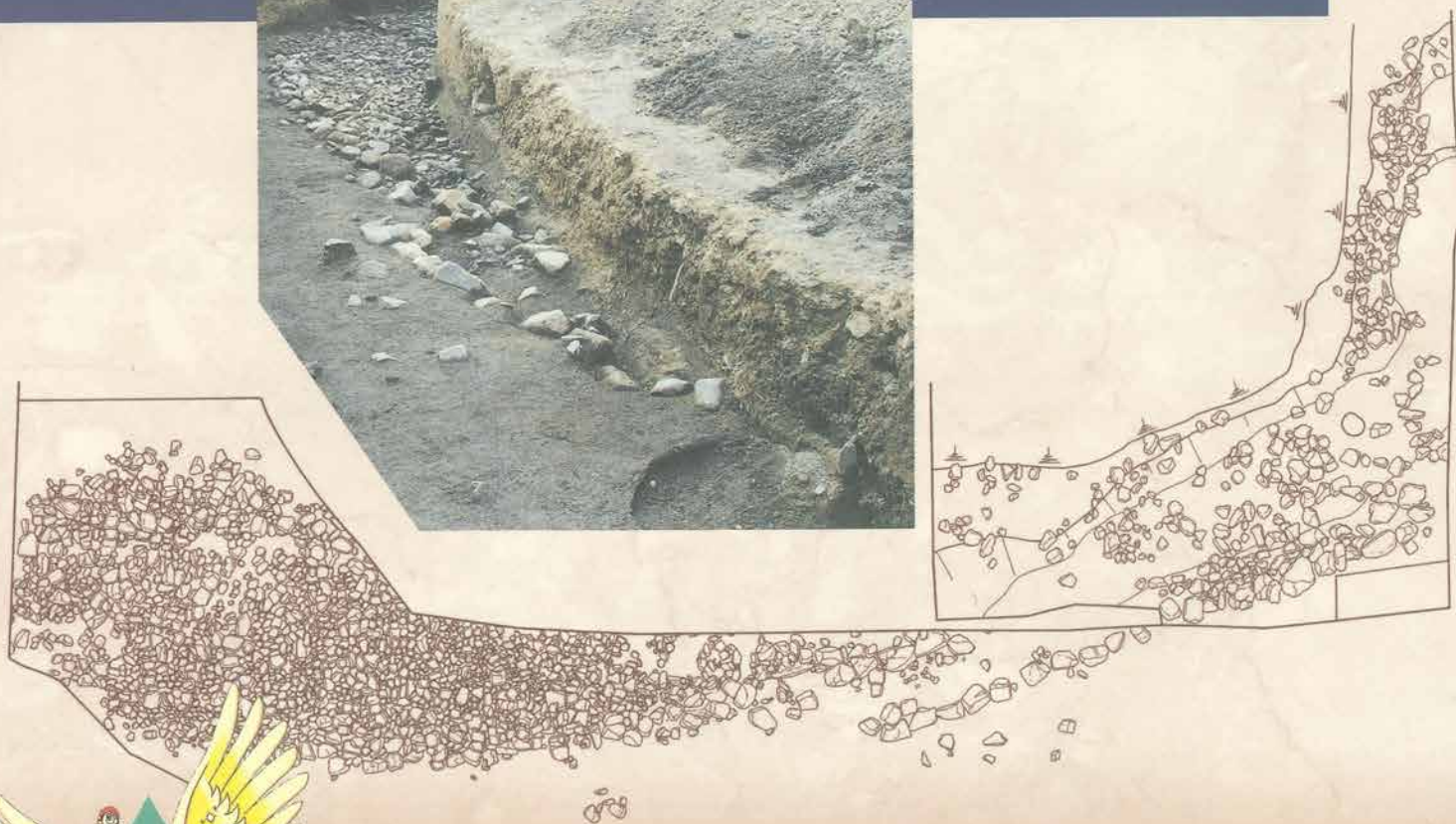
六 条 遺 跡

2003年3月14日発行

編 集 兵庫県教育委員会埋蔵文化財調査事務所
〒652-0032 神戸市兵庫区荒田町2丁目1番5号

発 行 兵庫県教育委員会
〒650-8567 神戸市中央区下山手通5丁目10番1号

印 刷 株式会社リョーイン



©Tezuka Productions