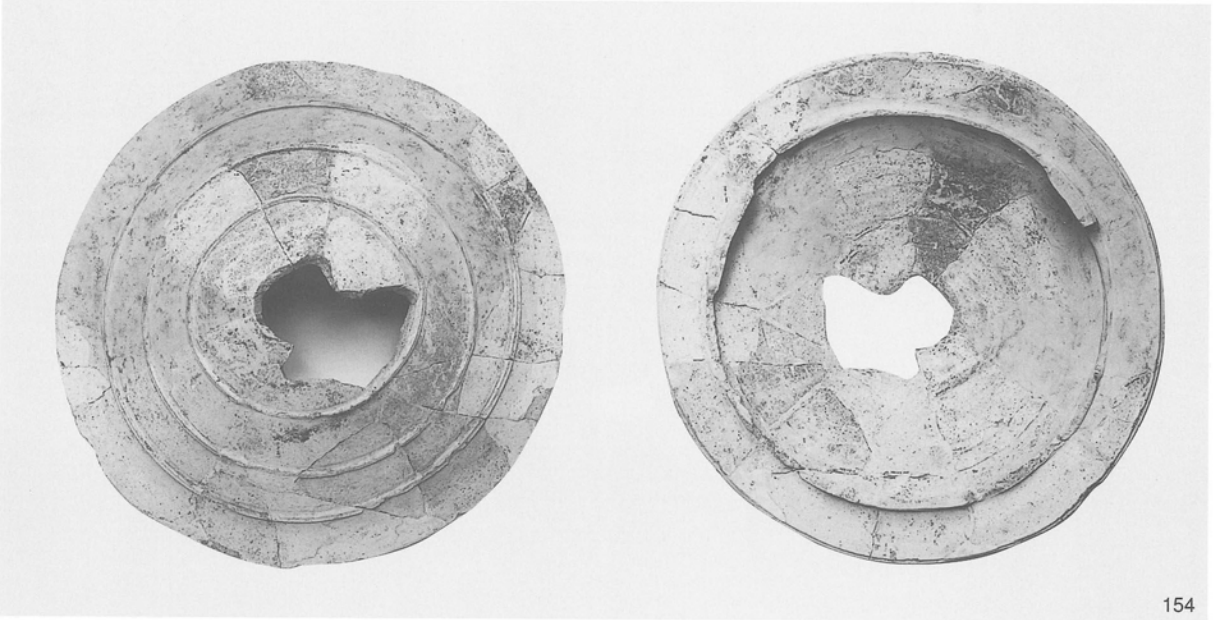




154



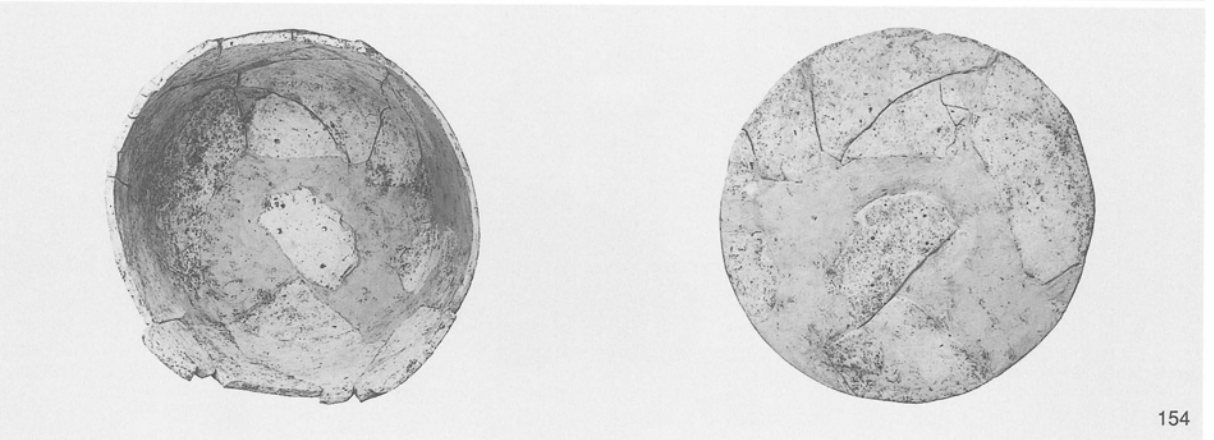
154
155



154



155



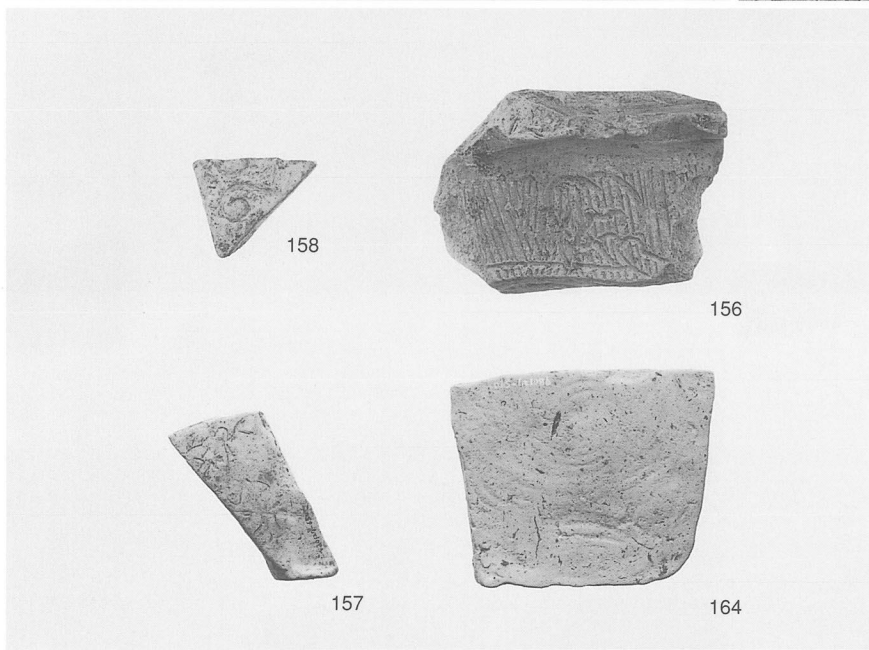
154



155



155 鹿のアップ

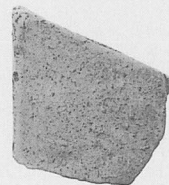
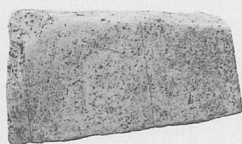
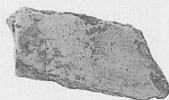
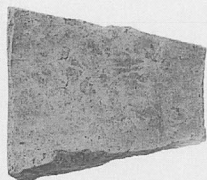
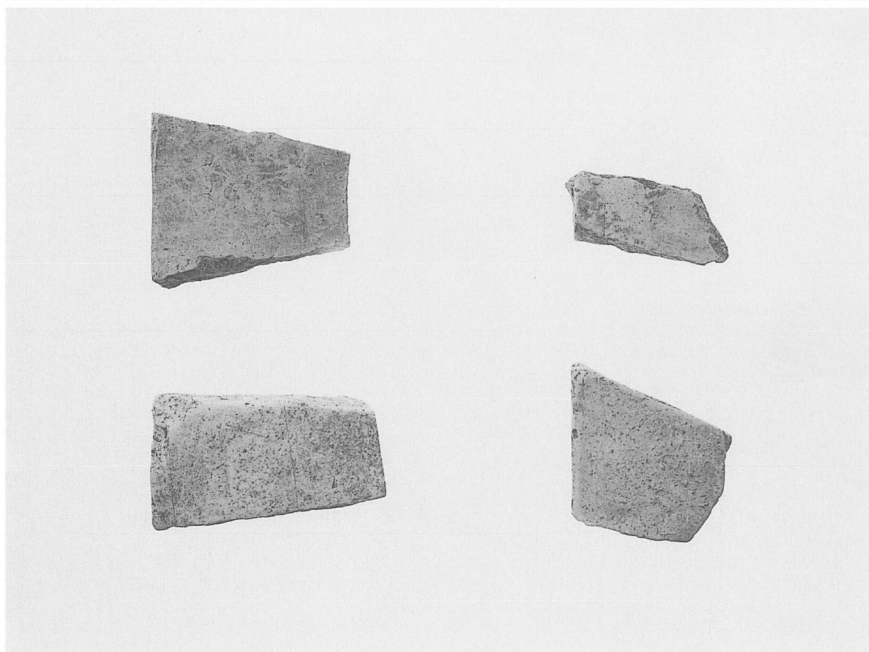


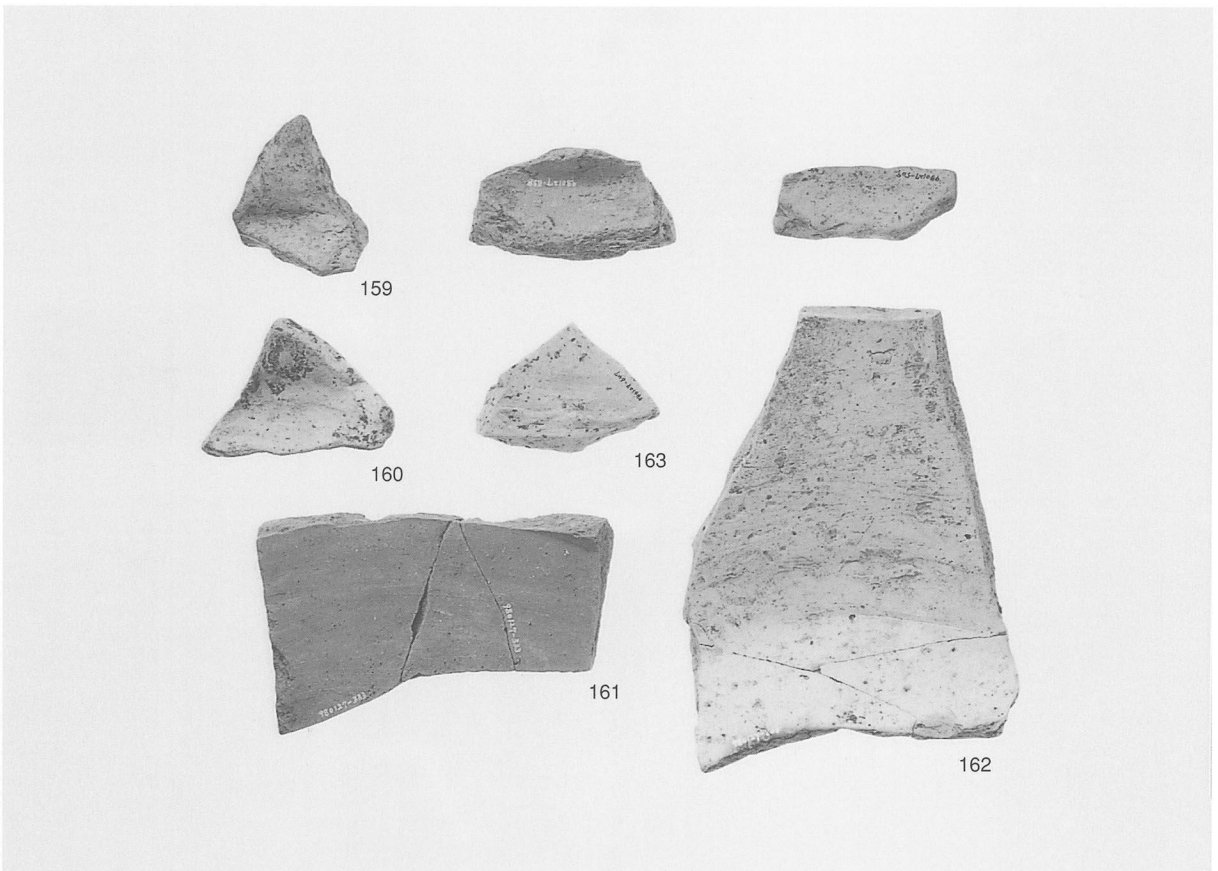
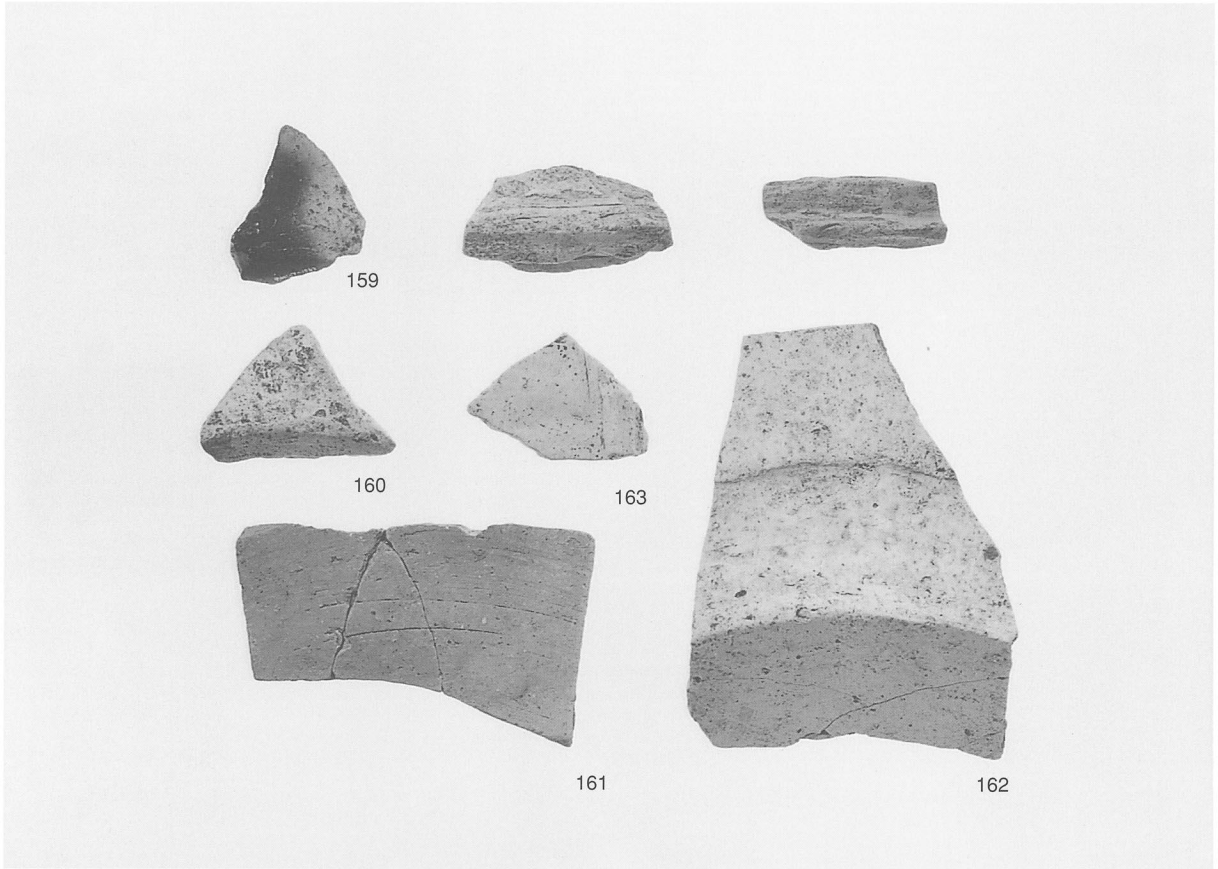
158

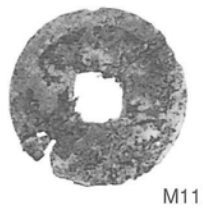
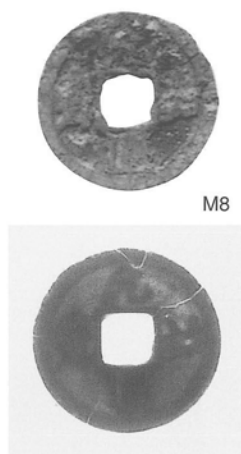
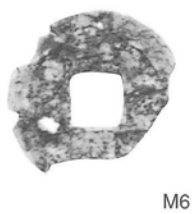
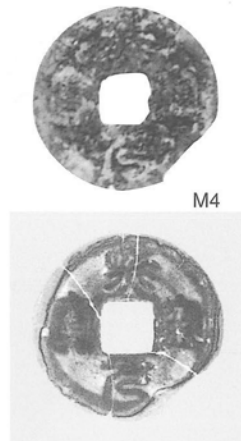
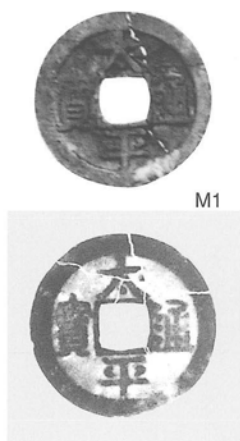
156

157

164

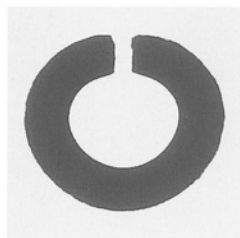








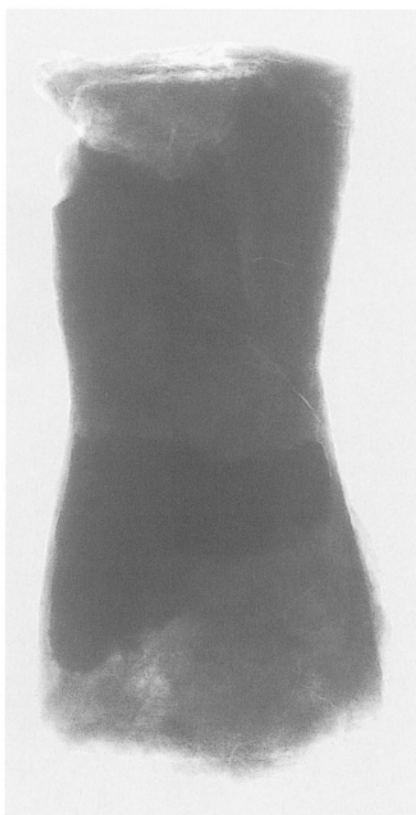
M15



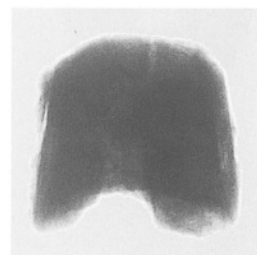
M16



M20



M22





M18



M27



M28



M30



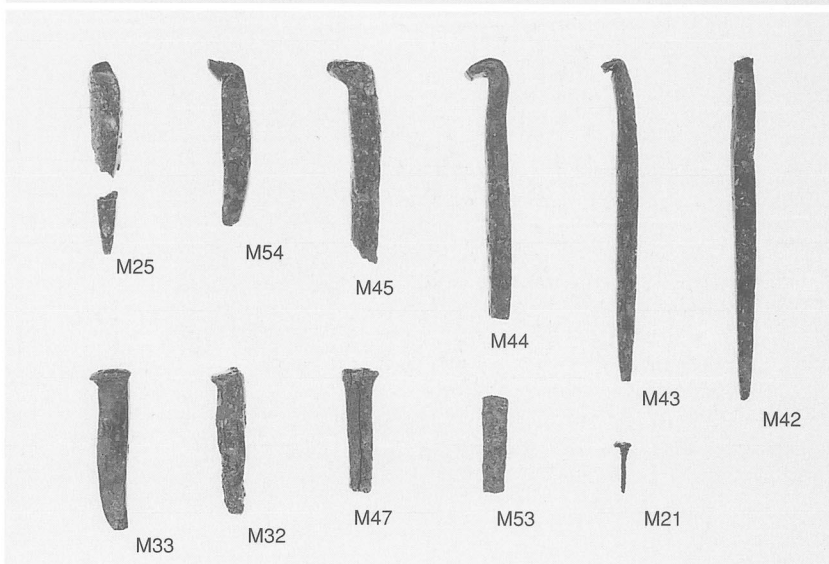
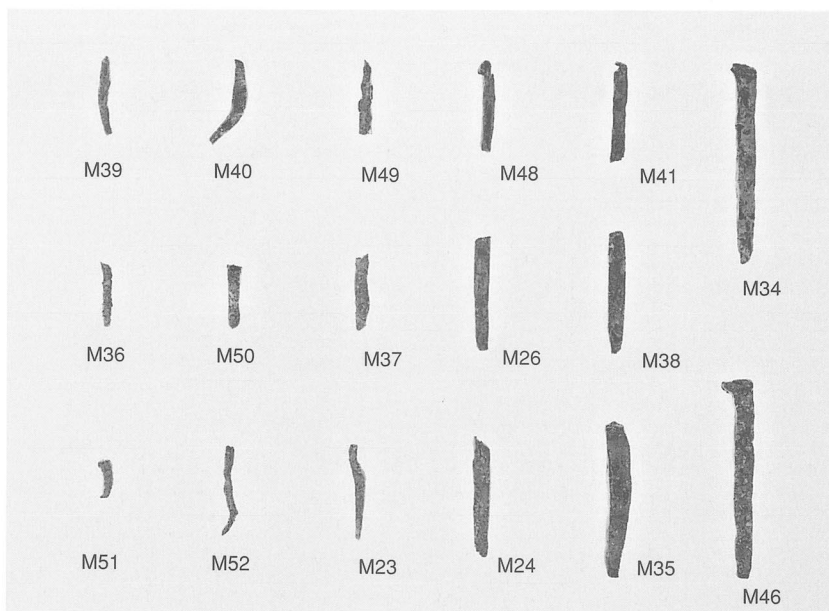
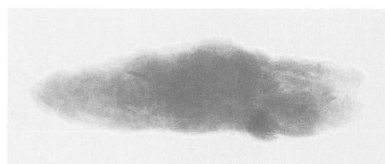
M29

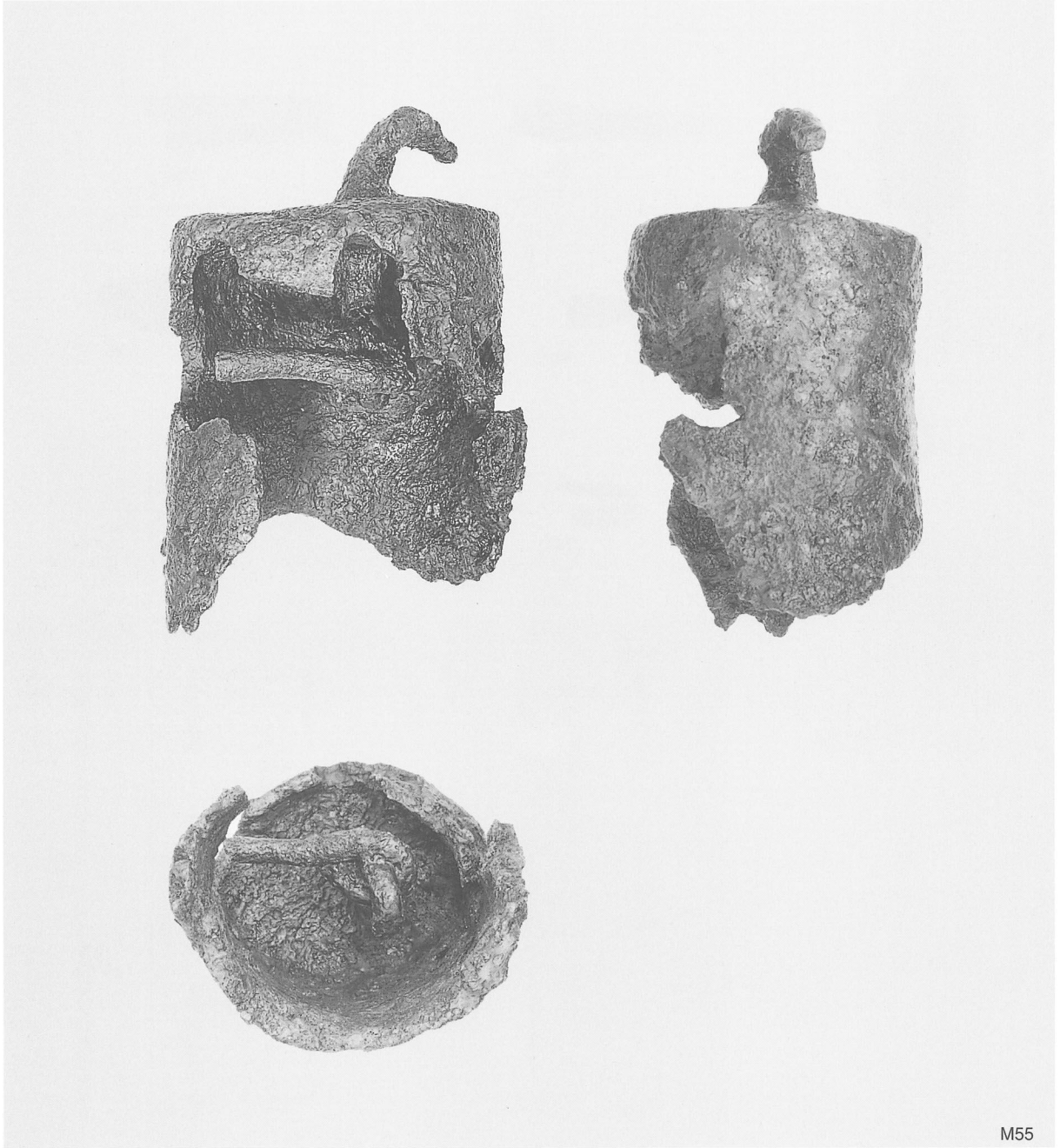


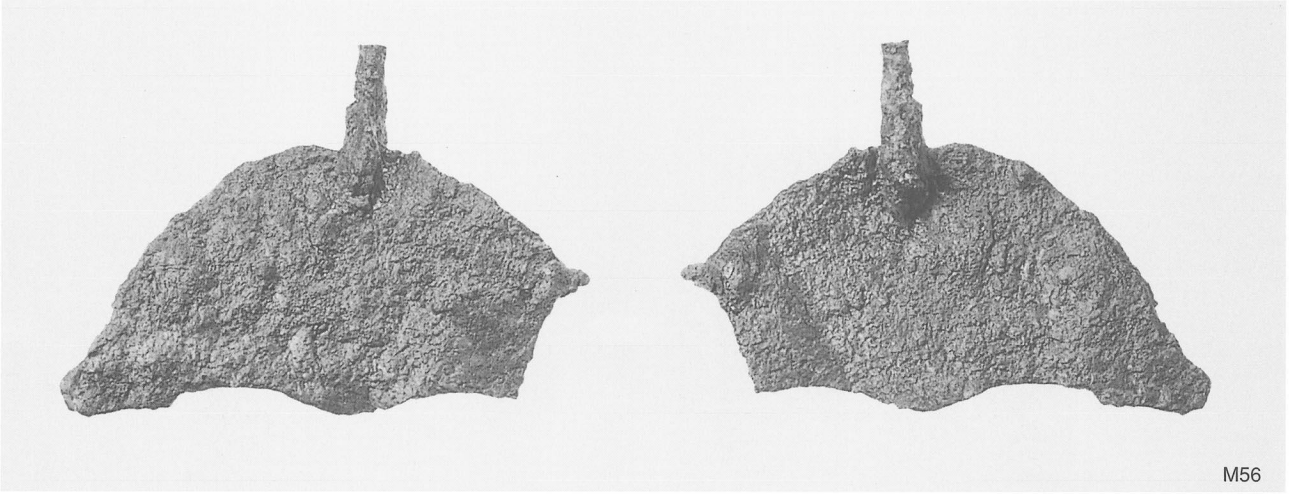
M19



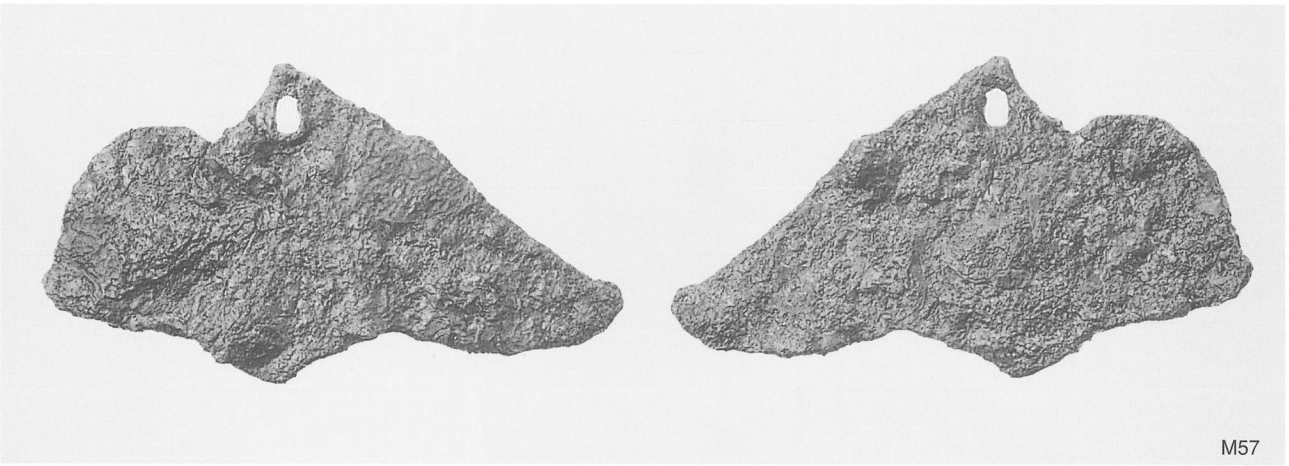
M31







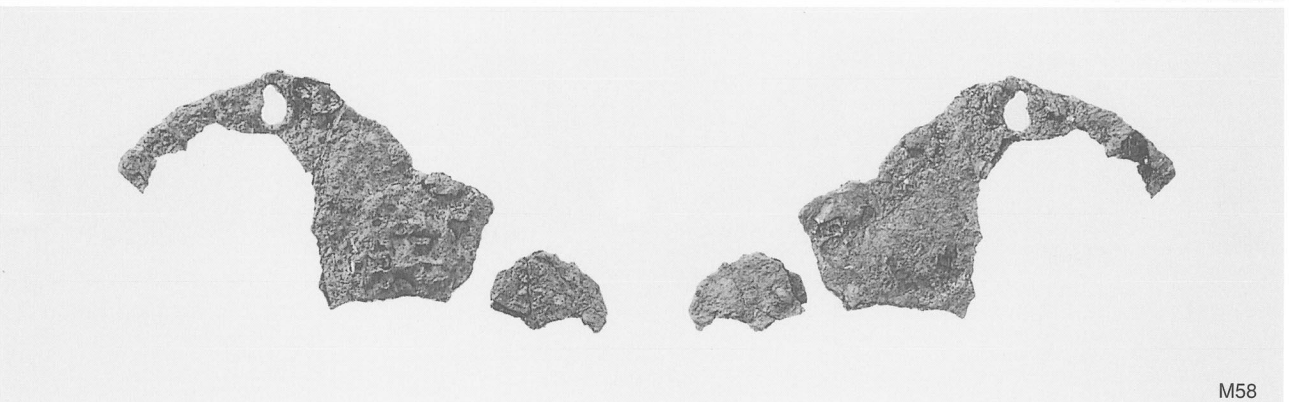
M56



M57



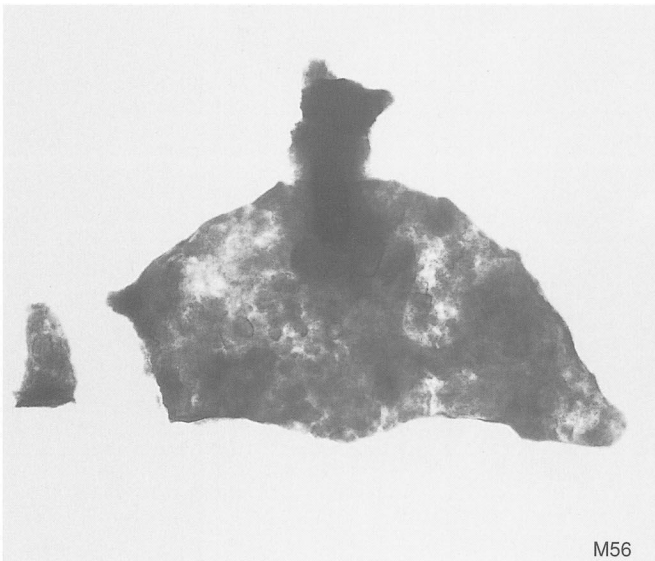
M59



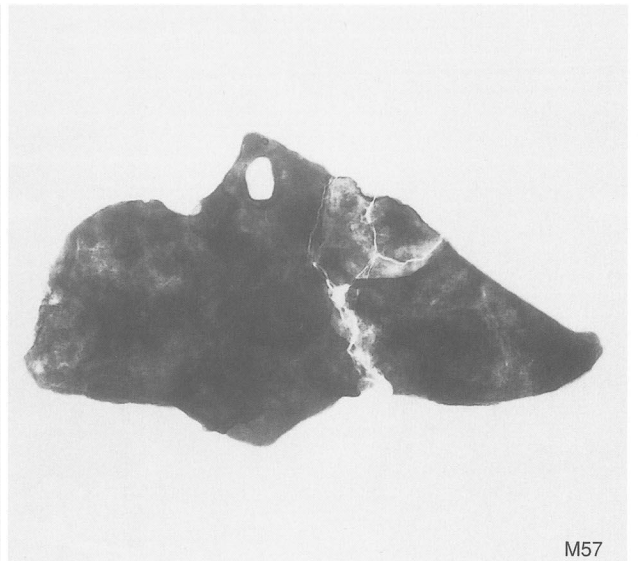
M58



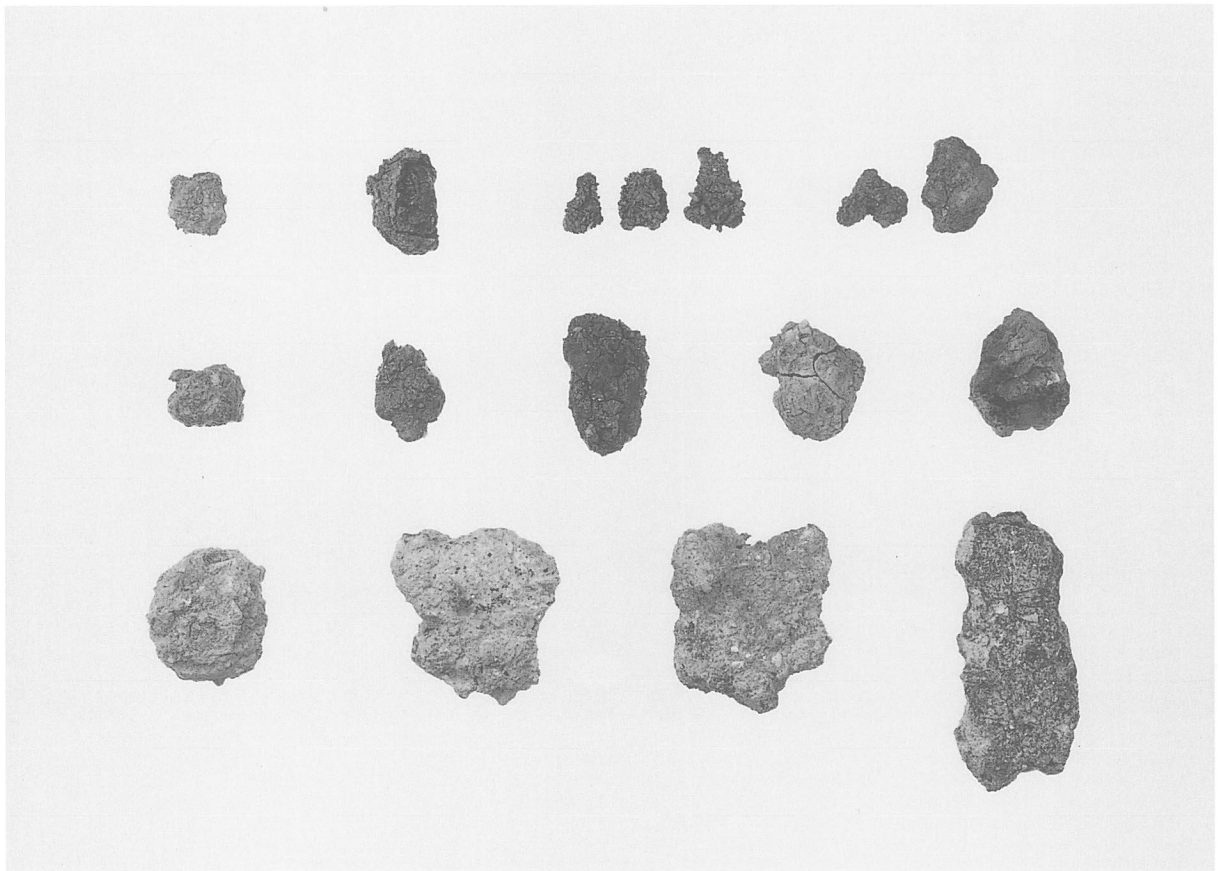
M55

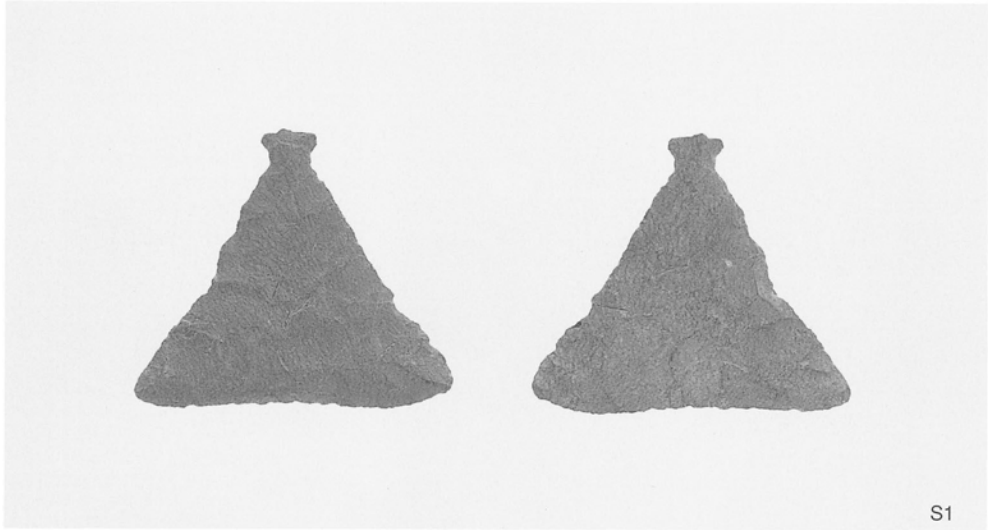


M56



M57

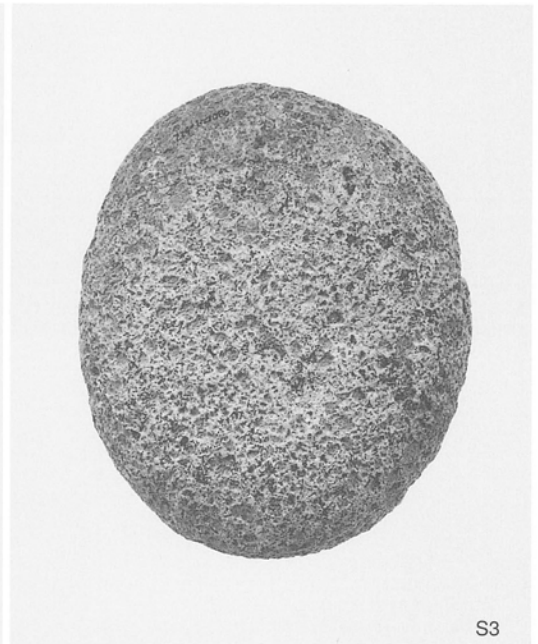




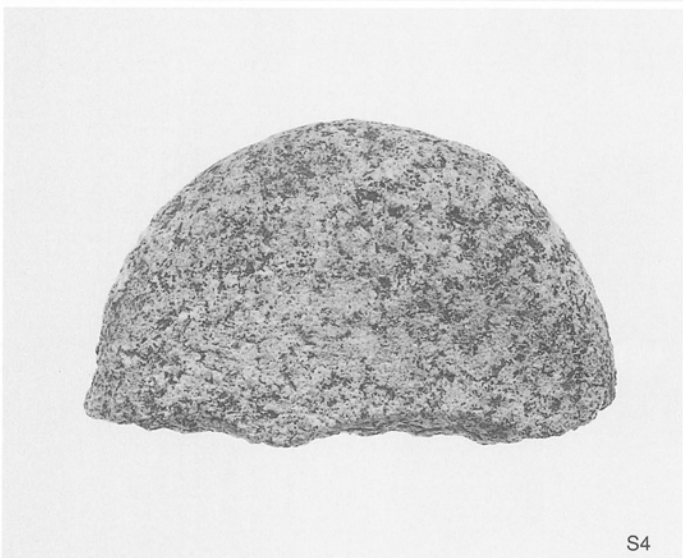
S1



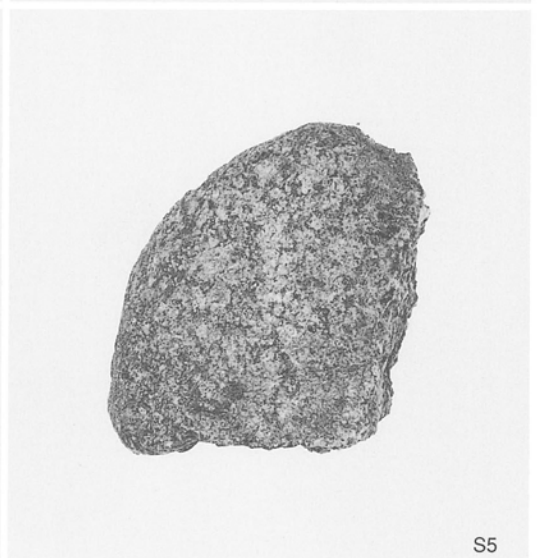
S2



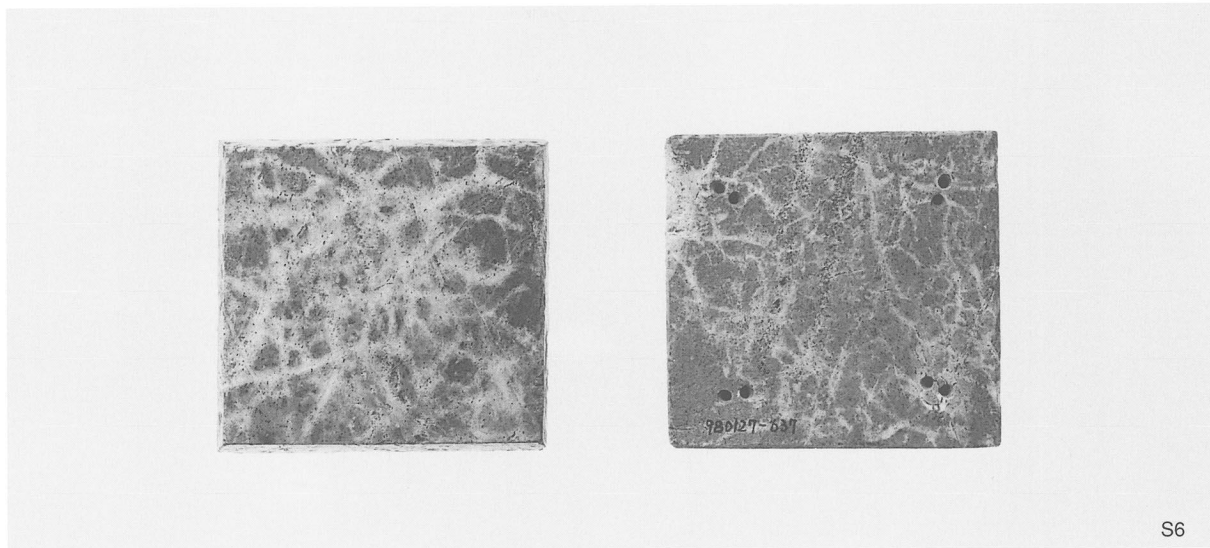
S3



S4



S5



S6



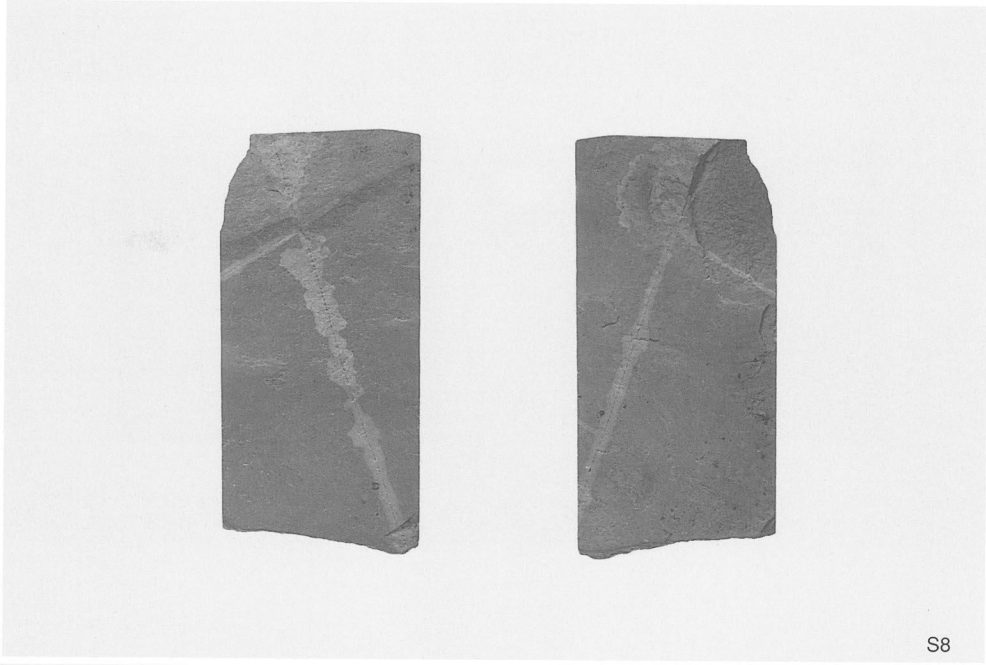
S7



S10



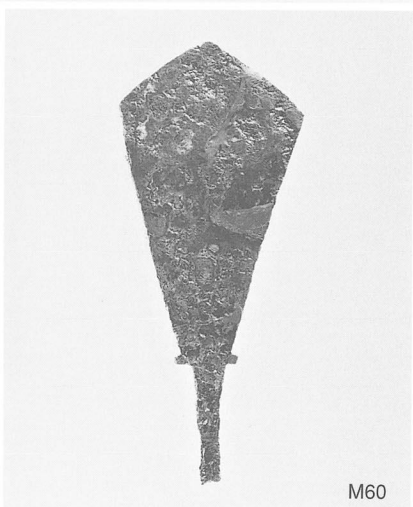
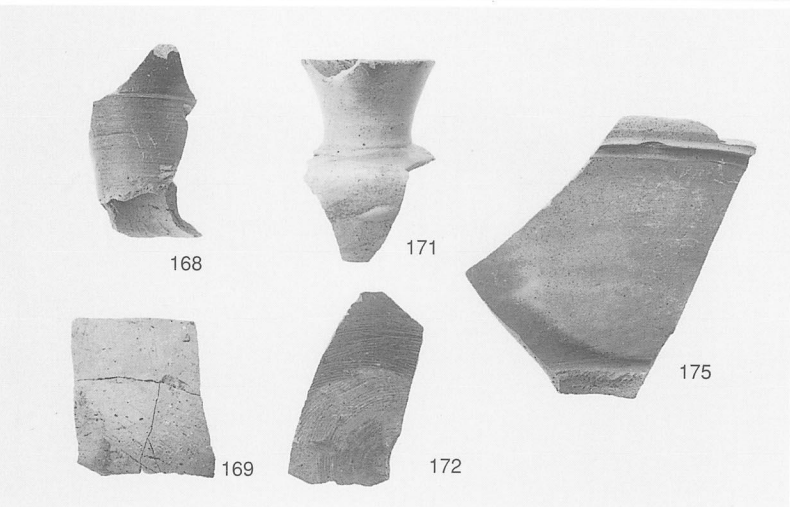
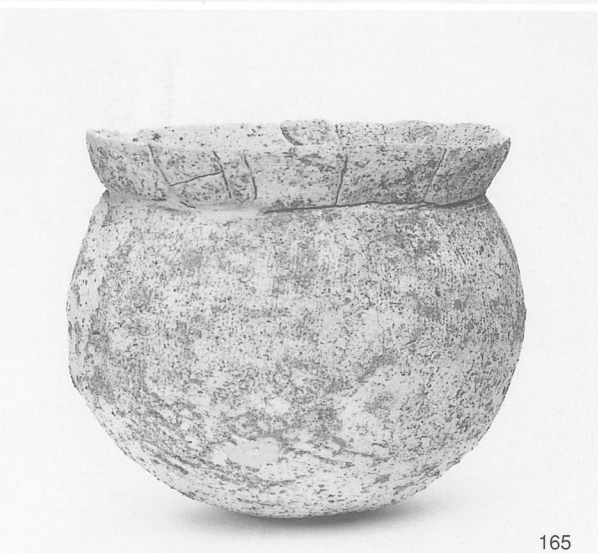
S11

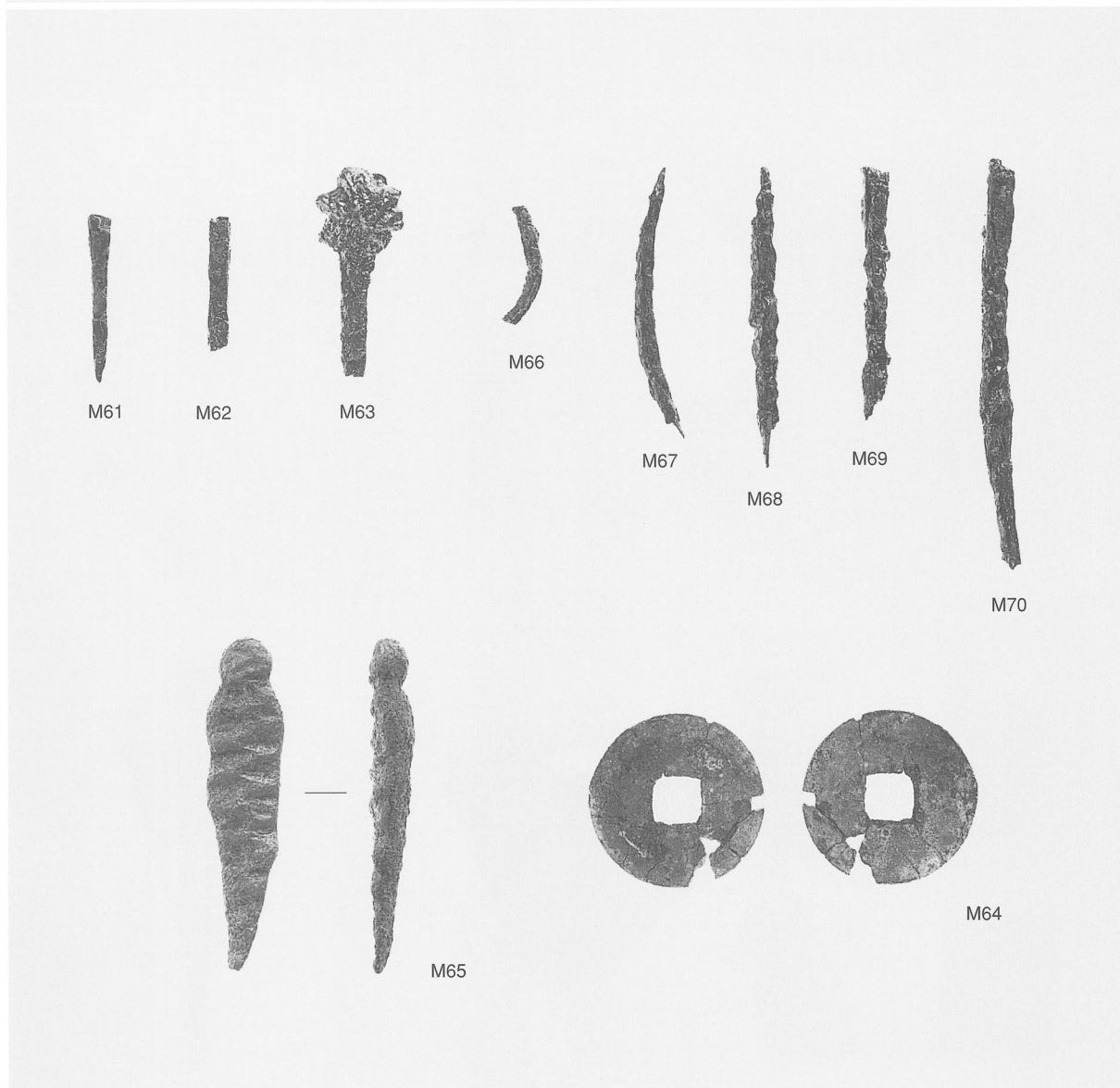
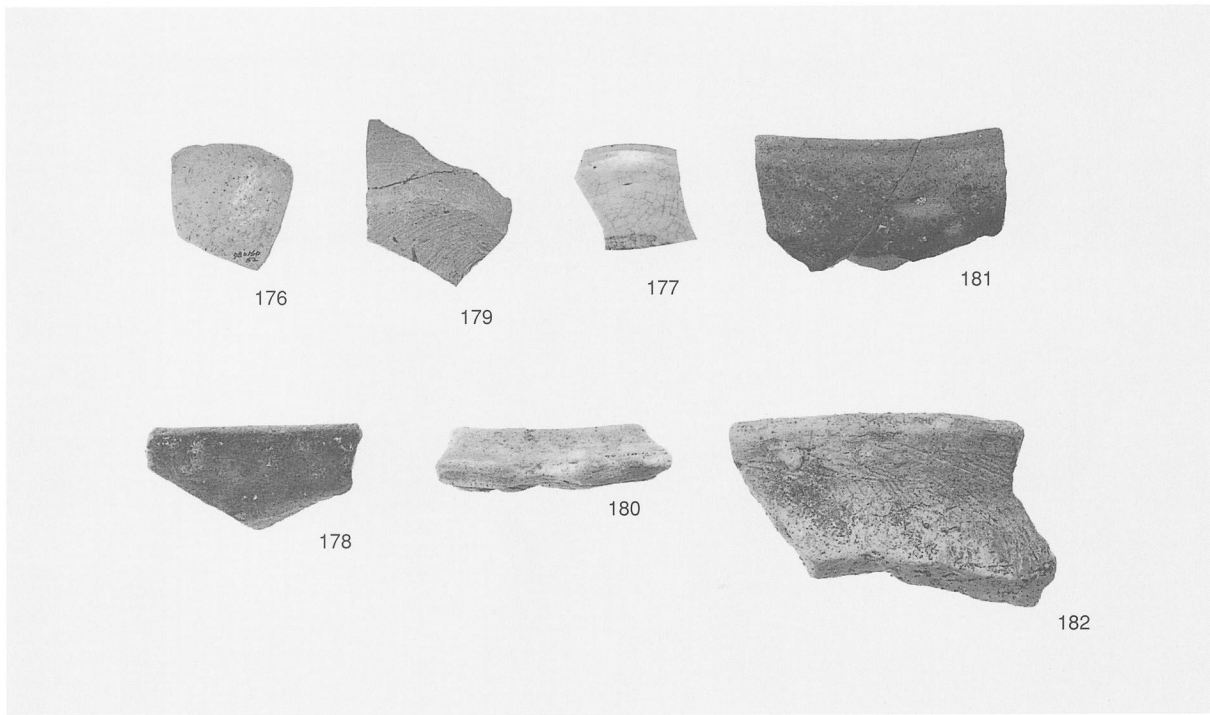


S8



S9







S12



M71



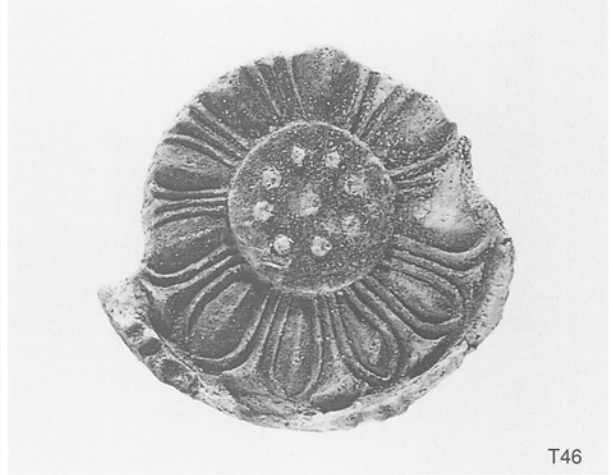
T44



T45



T26



T46



T49



T50



T55



T57



T58

T59



T60



T62



T64



T63



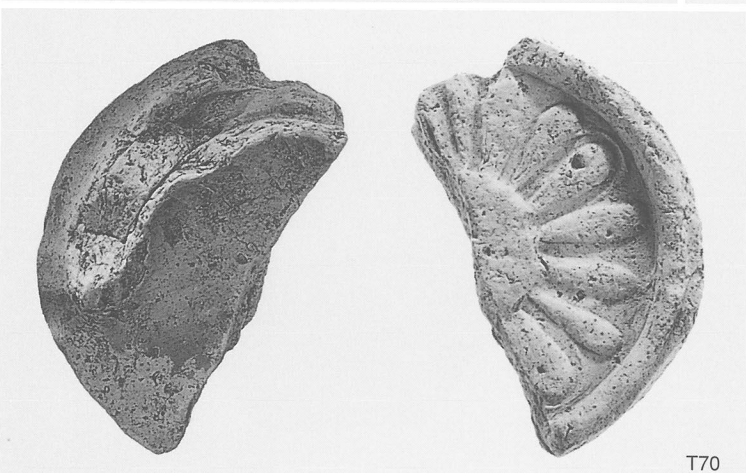
T66



T69



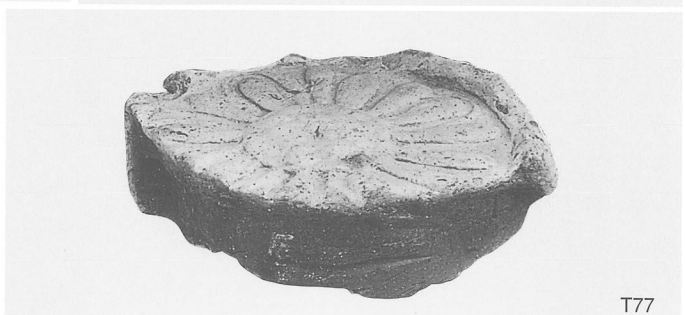
T76



T70



T31



T77



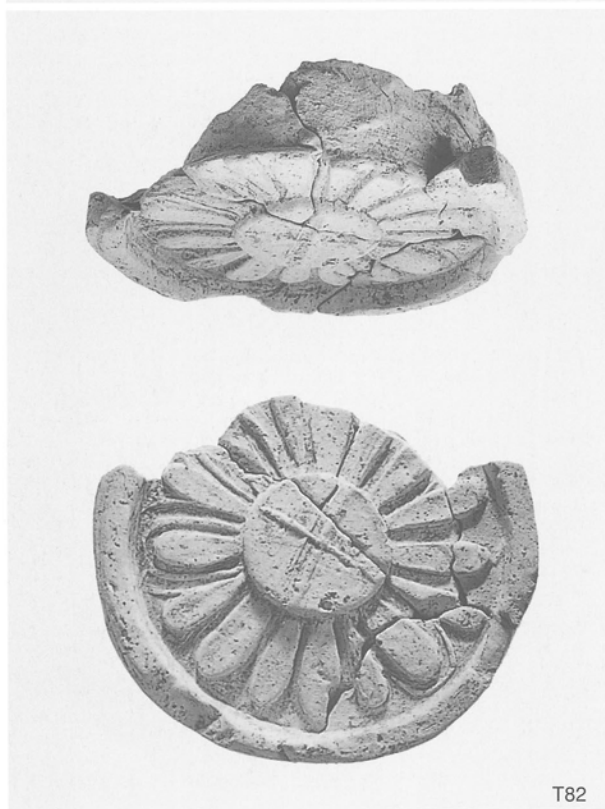
T78



T80



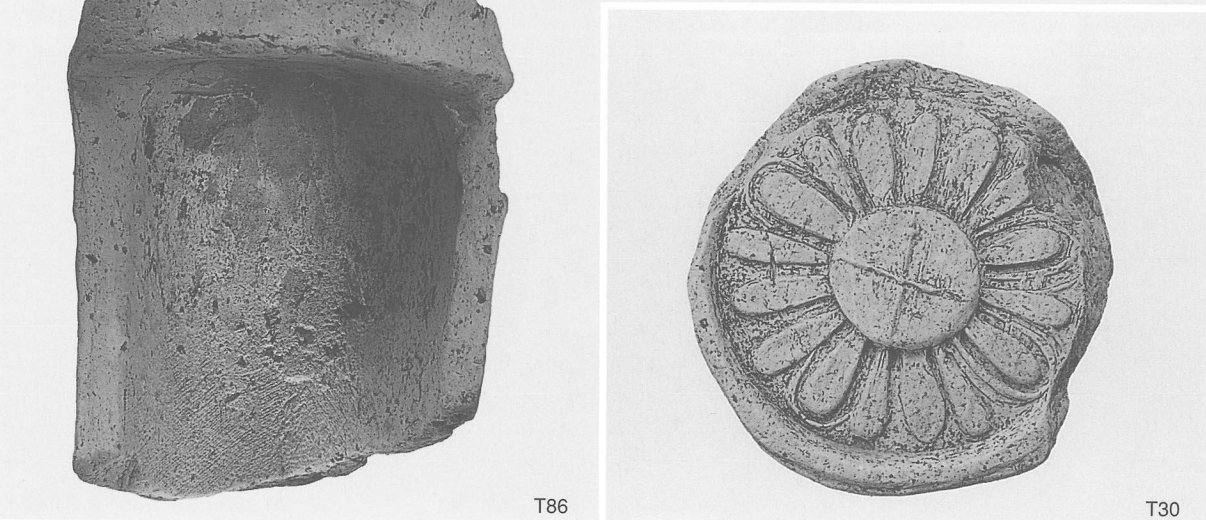
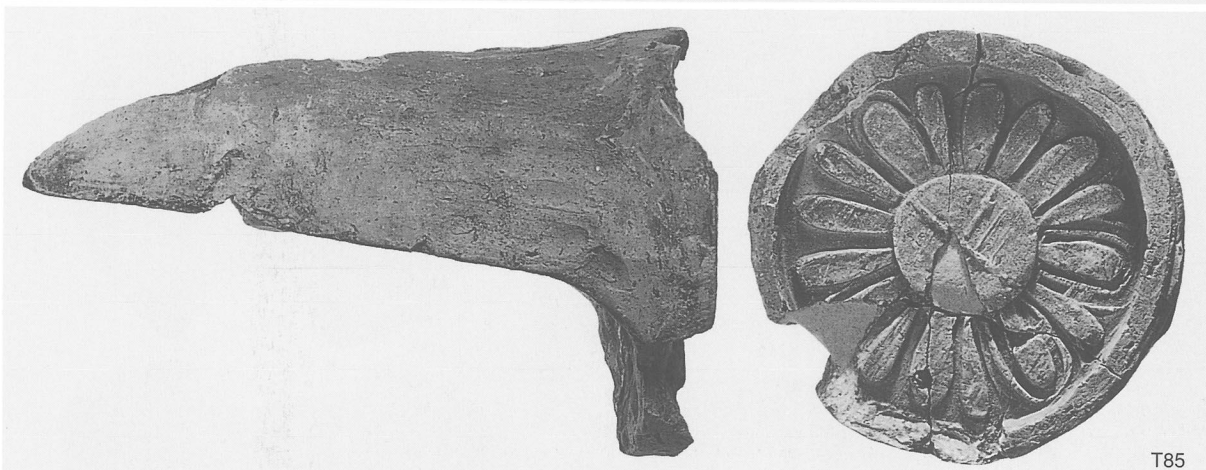
T81

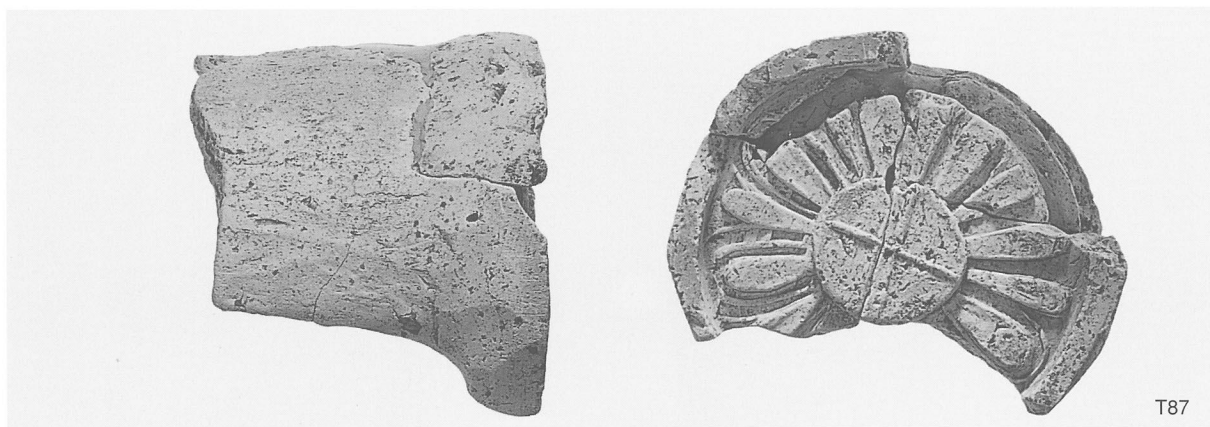


T82

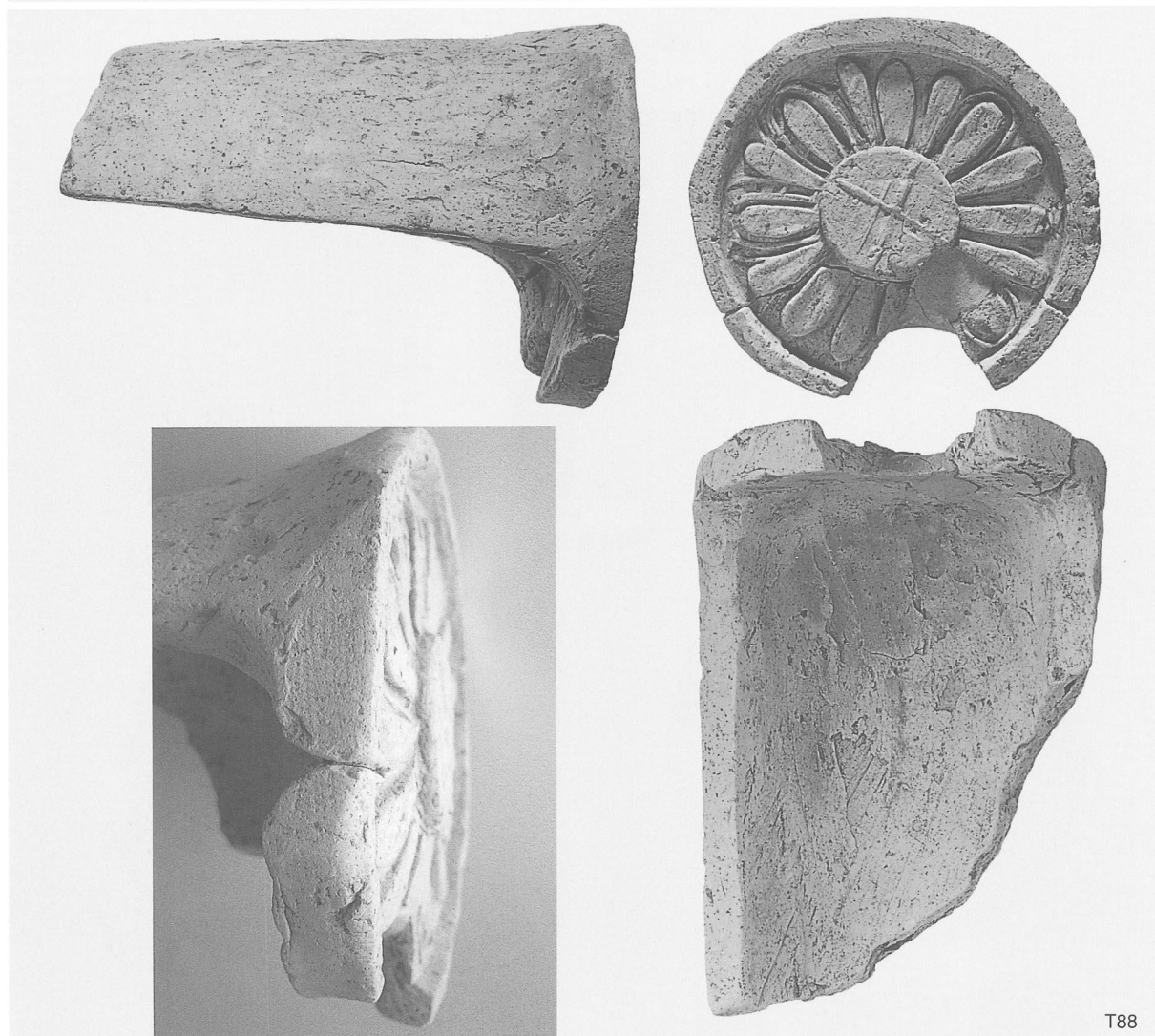


T83





T87



T88



T89



T91



T92



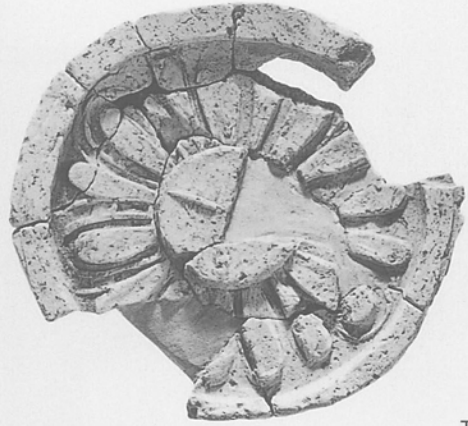
T90



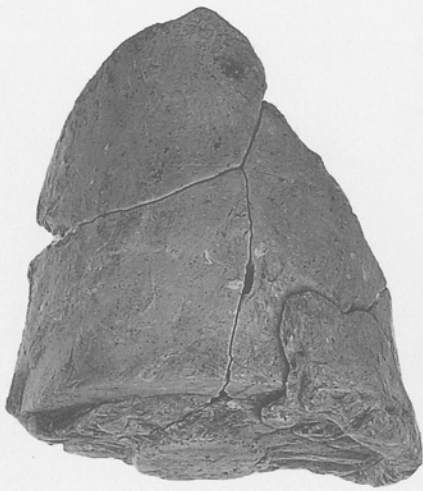
T93



T94



T95



T97



T98



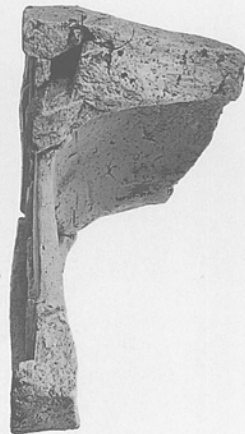
T97



T98



T96



T99



T102



T106



T110



T109



T112



T114



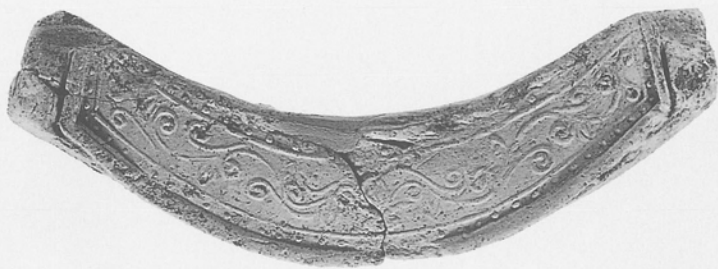
T116



T117



T118



T119



T120



T127



T129



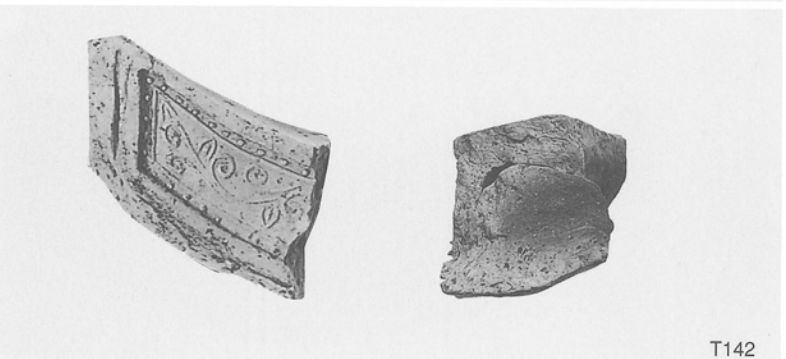
T128



T133



T135



T142



T121



T124



T125



T139



T137



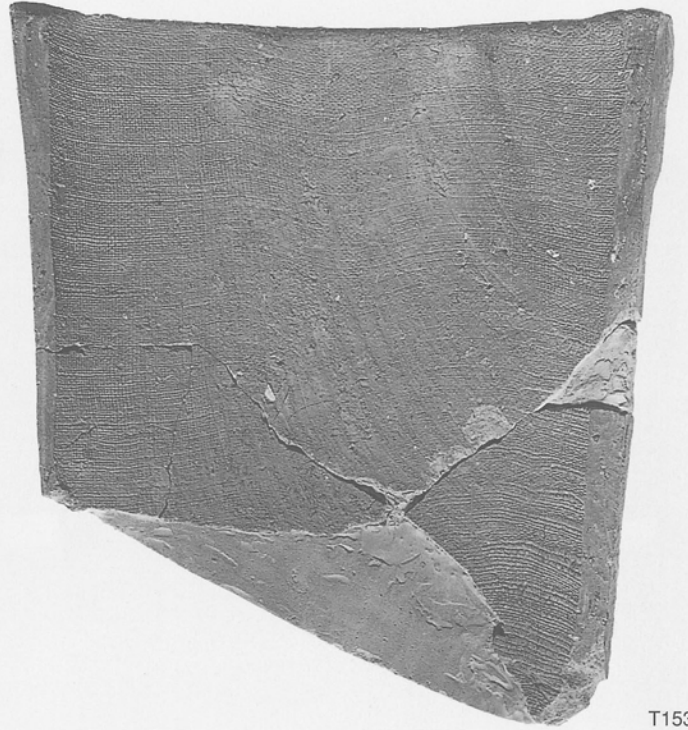
T145



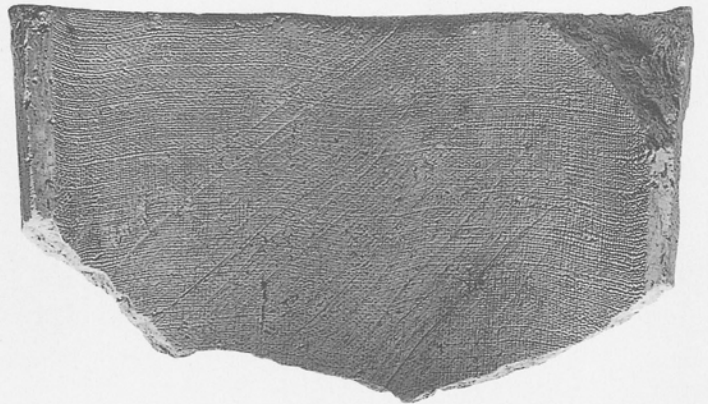
T144







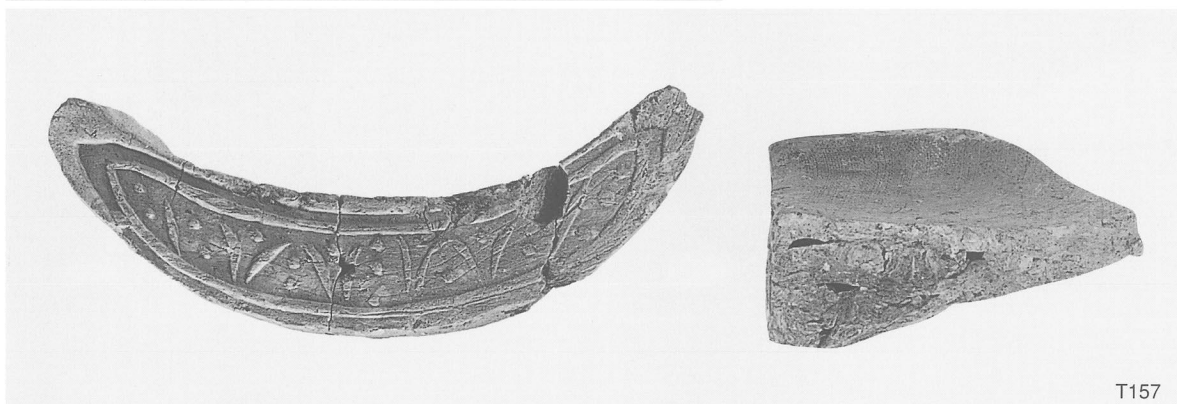
T153



T155



T156



T157



T158



T159



T163



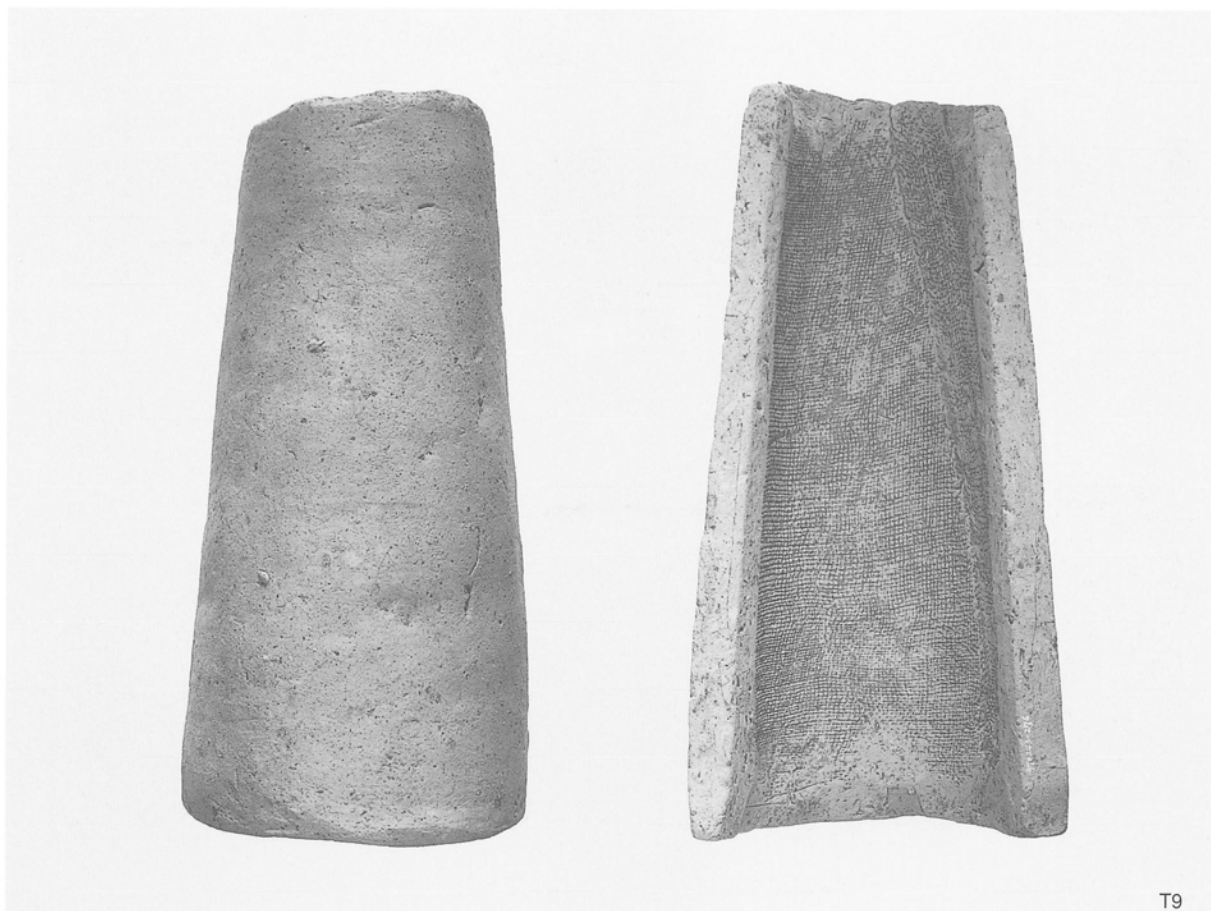
T164



T162



T4

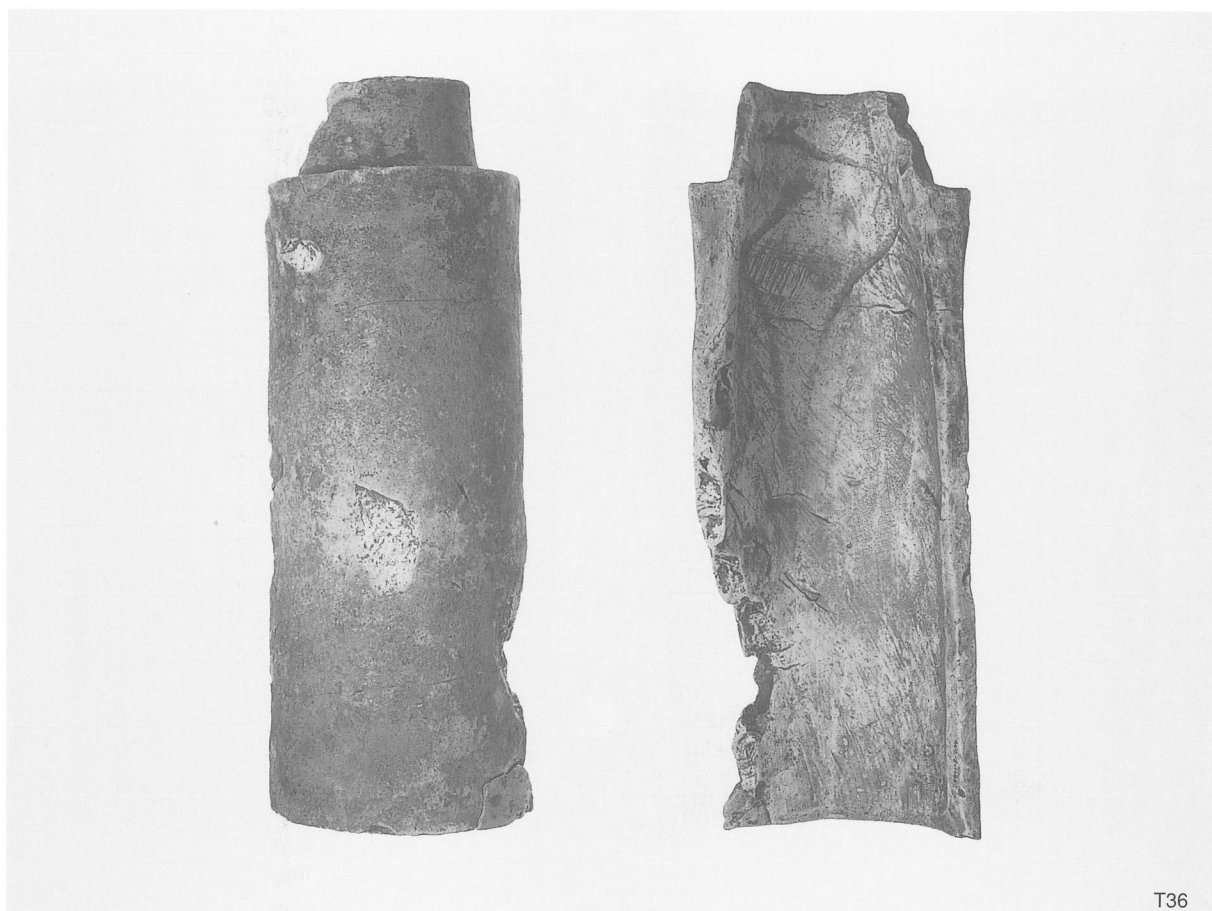




T11



T242





T12



T13



T17



T18



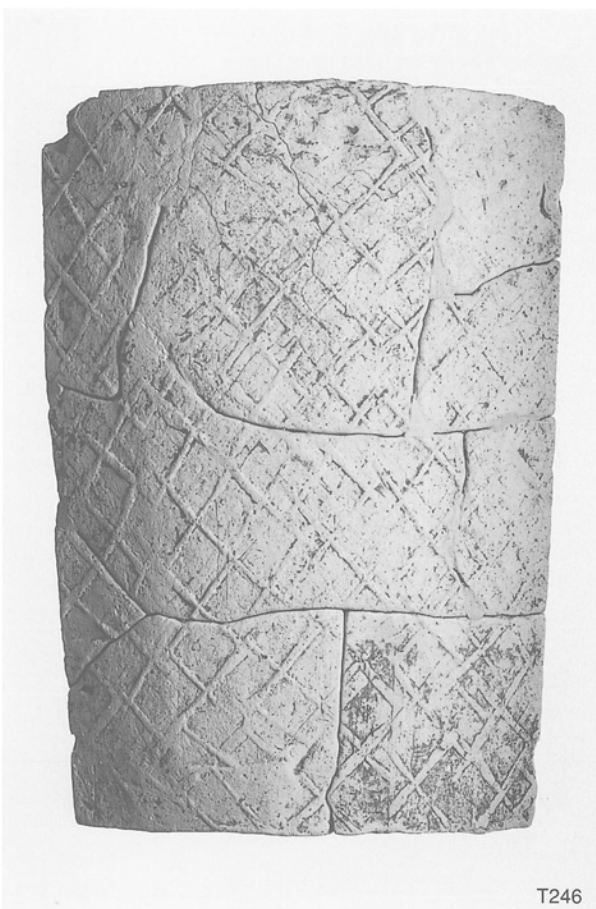
T19



T20



T245



T246



T247



T248

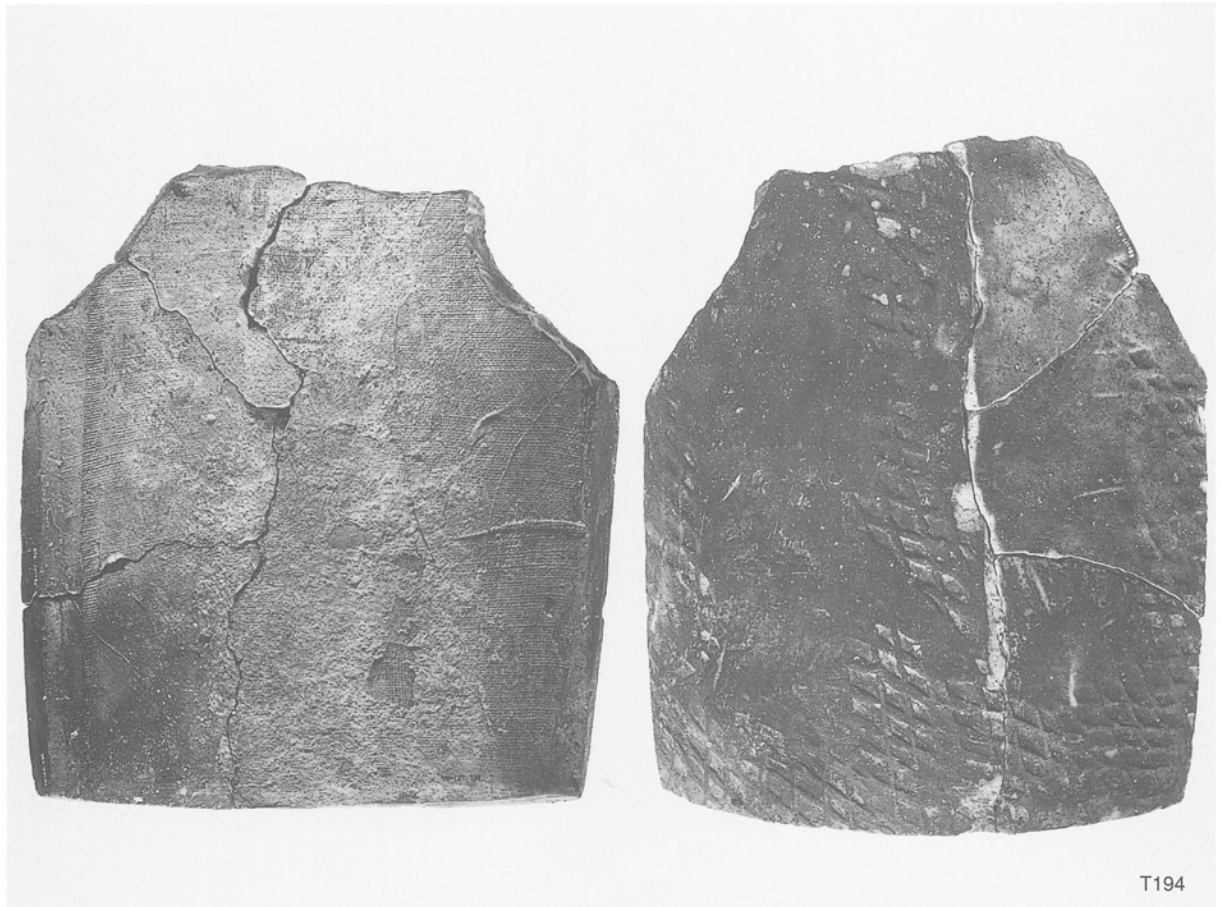




T184



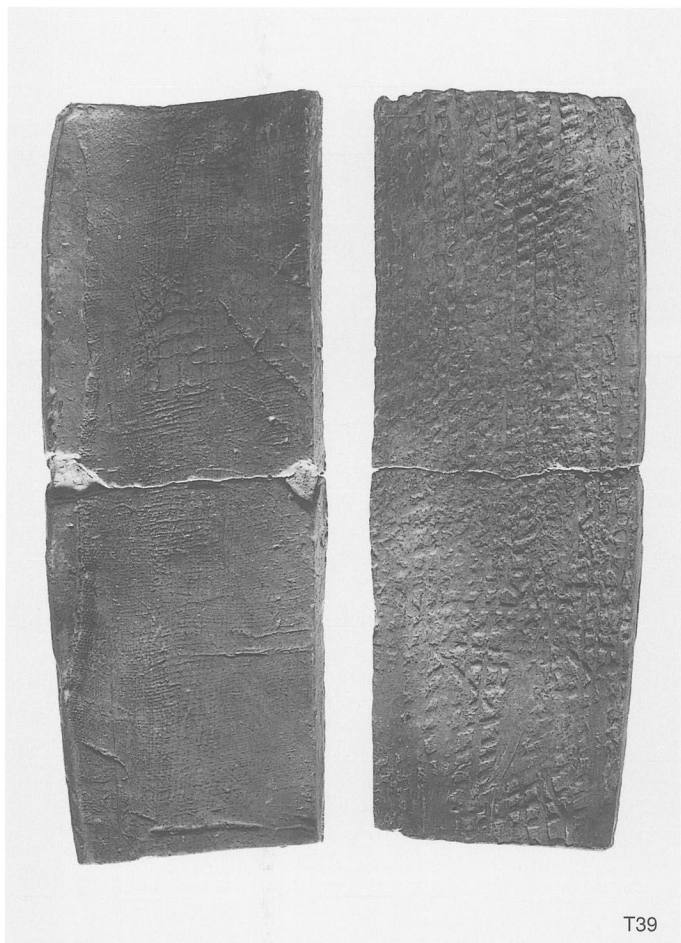
T185



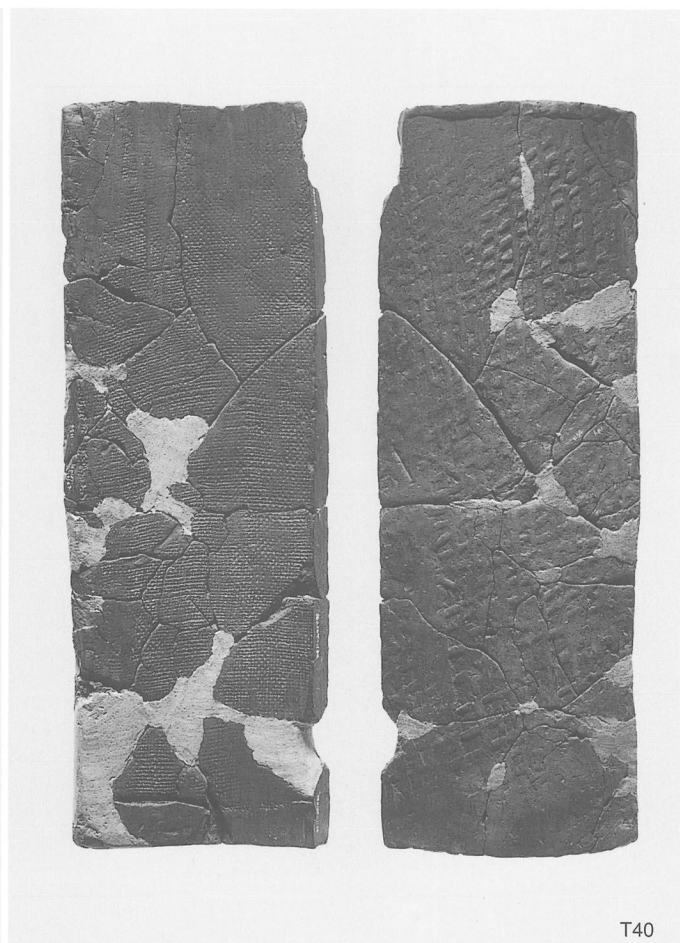
T194



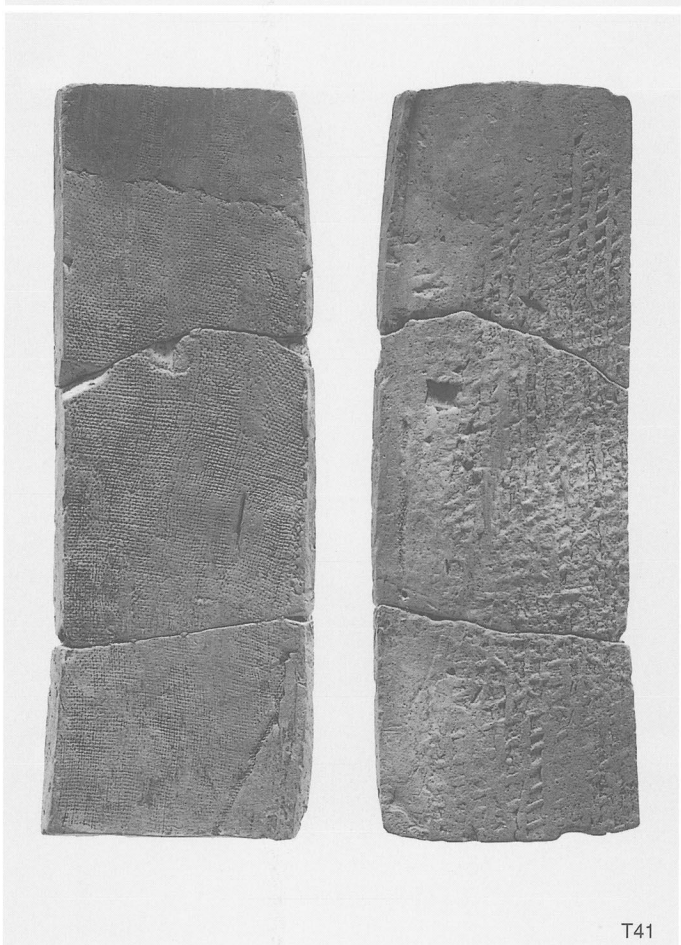
T224



T39



T40



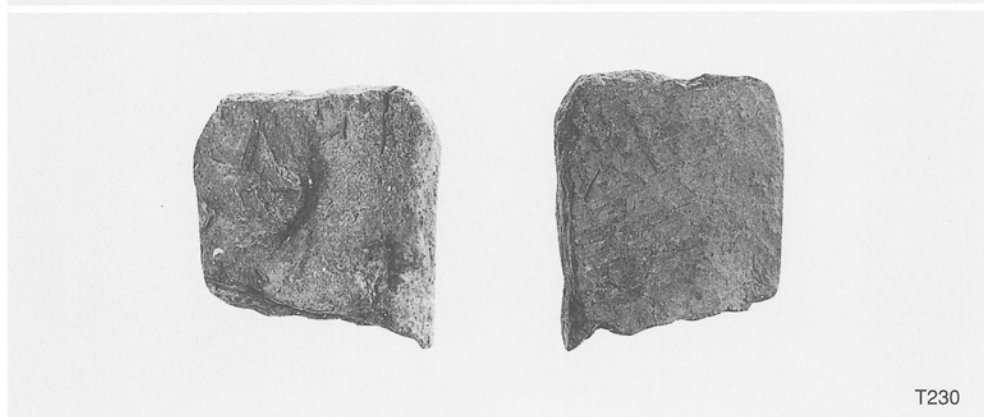
T41



T42



T229



T230



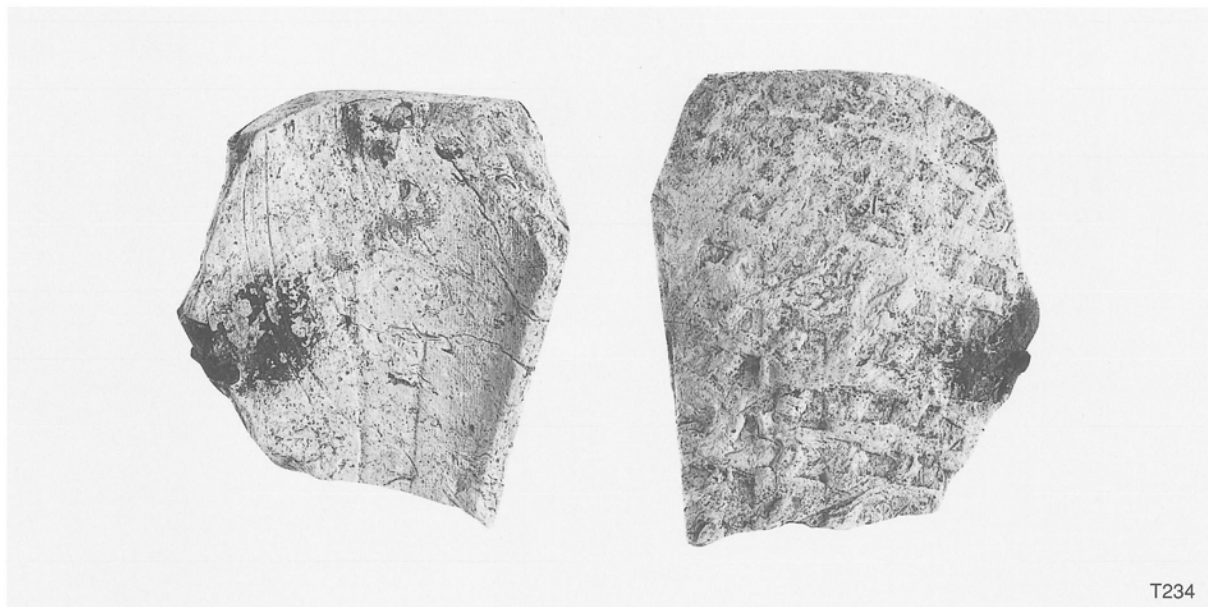
T231



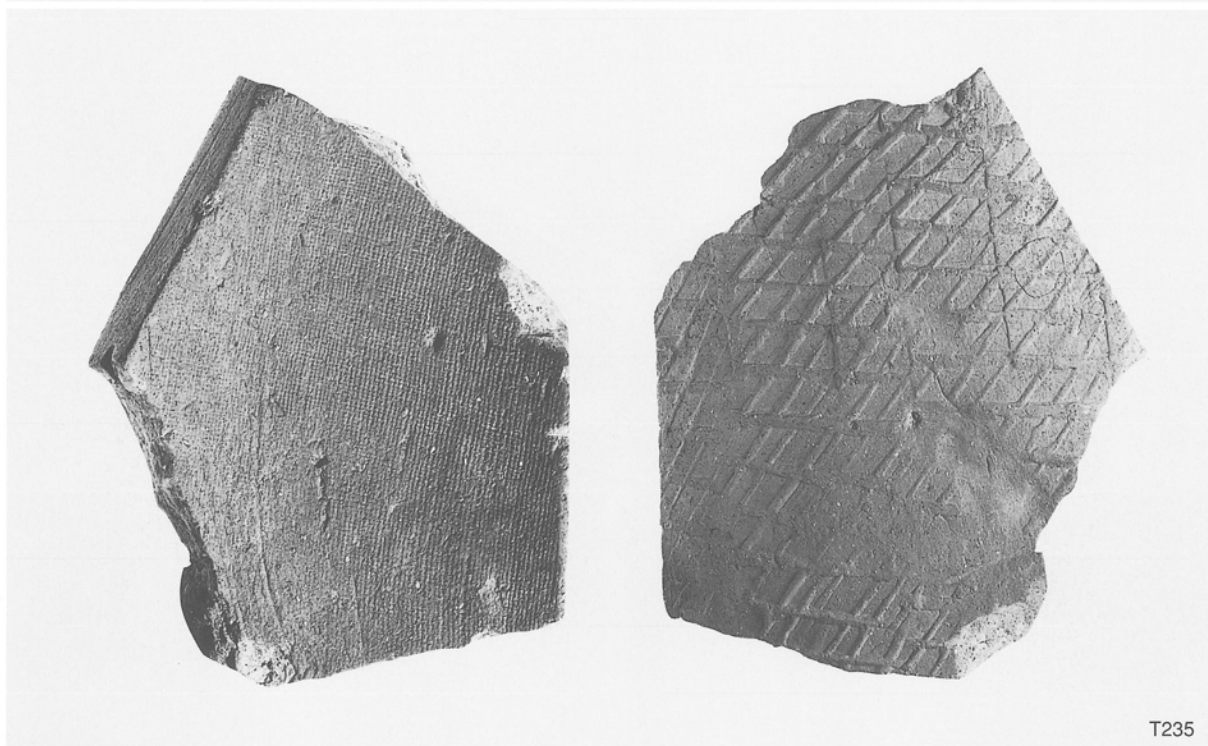
T232



T233



T234



T235



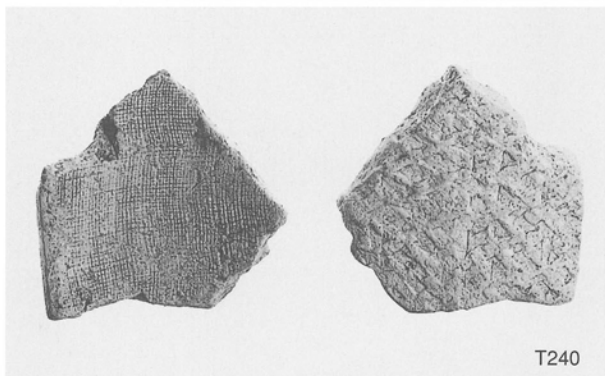
T236



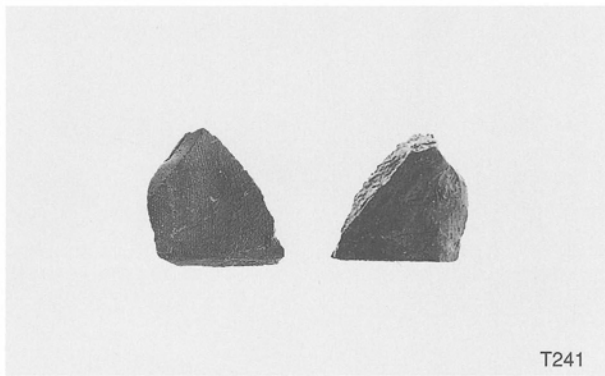
T237



T238



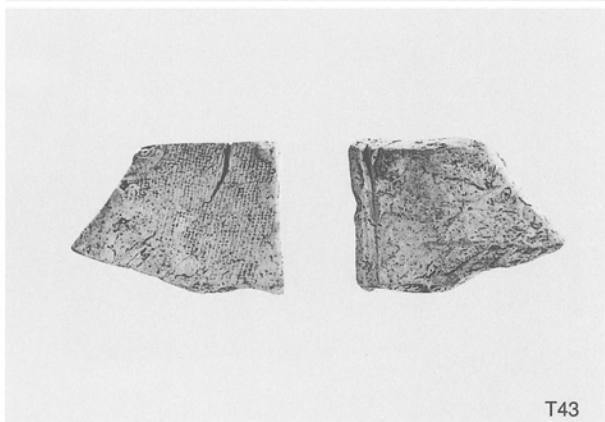
T240



T241



T239



T43

報告書抄録

ふりがな	こいぬまる なかたにはいじ・なかたにいせき・なかたにこふん							
書名	小犬丸 中谷廃寺・中谷遺跡・中谷古墳							
副書名	山陽自動車道新宮インターチェンジ建設事業に伴う埋蔵文化財発掘調査報告書							
巻次	2							
シリーズ番号	兵庫県文化財調査報告 第306冊							
編著者名	西口和彦、久保弘幸、菱田淳子、高木芳史、岩戸晶子、別府洋二							
編集機関	兵庫県教育委員会埋蔵文化財調査事務所							
所在地	〒652-0032 神戸市兵庫区荒田町2丁目1番5号 TEL078-531-7011							
発行年月日	2006(平成18)年3月20日							
所収 遺跡名	所在地			北緯	東経	本発掘調査 調査期間	調査面積	調査原因
		市町村	遺跡調査 番号					
小犬丸 中谷廃寺 中谷遺跡 中谷古墳	兵庫県 たつの市 揖西町 小犬丸 字中谷・落合	28229	分布調査940147 確認調査960438 970154・980033 980125 本発掘調査 970243 980127 980160	34度 51分 31秒	134度 29分 5秒	1997.08～ 1998.01 1998.09～ 1998.12 1998.10～ 1998.11	4,673㎡	山陽自動車道 新宮I.C. 建設事業
所収 遺跡名	種別	主な時代	主な遺構	主な遺物		特記事項		
小犬丸 中谷廃寺 中谷遺跡 中谷古墳	寺院址 集落址 古墳	縄紋・弥生・古 墳・白鳳・奈良 平安・鎌倉 室町時代	瓦葺建物 築地 掘立柱建物 横穴石室	縄紋・弥生土器 須恵器・土師器 瓦・石器・風鐸 陶製宝塔		古代官衙である布勢駅家に 隣接した、風鐸や陶製宝塔、 多数の軒瓦が出土した 古代寺院址		

兵庫県文化財調査報告第306冊

小犬丸

中谷廃寺・中谷遺跡・中谷古墳

山陽自動車道新宮インターチェンジ建設事業に伴う
埋蔵文化財発掘調査報告書2

2006(平成18)年3月20日発行

編集 兵庫県教育委員会埋蔵文化財調査事務所
〒652-0032 神戸市兵庫区荒田町2丁目1番5号
TEL 078-531-7011

発行 兵庫県教育委員会
〒650-0011 神戸市中央区下山手通5丁目10番1号

印刷 株式会社 リョーイン
〒652-8585 神戸市兵庫区和田崎町1丁目1番1号
TEL 078-672-4820