

# Plates

	青磁
	白磁
染付	



中国陶磁器 (外面)



中国陶磁器 (内面)

色絵	
	染付



国産磁器 (外面)



国産磁器 (内面)

鉄釉	灰釉



国産陶器（瀬戸、美濃）（外面）



国産陶器（瀬戸、美濃）（内面）



信楽 (鉄釉)	瀬戸、美濃 (鉄釉)	
	瀬戸、美濃 (灰釉)	
瀬戸、美濃 (御深井釉)	瀬戸、美濃 (鉄絵、鉄釉)	

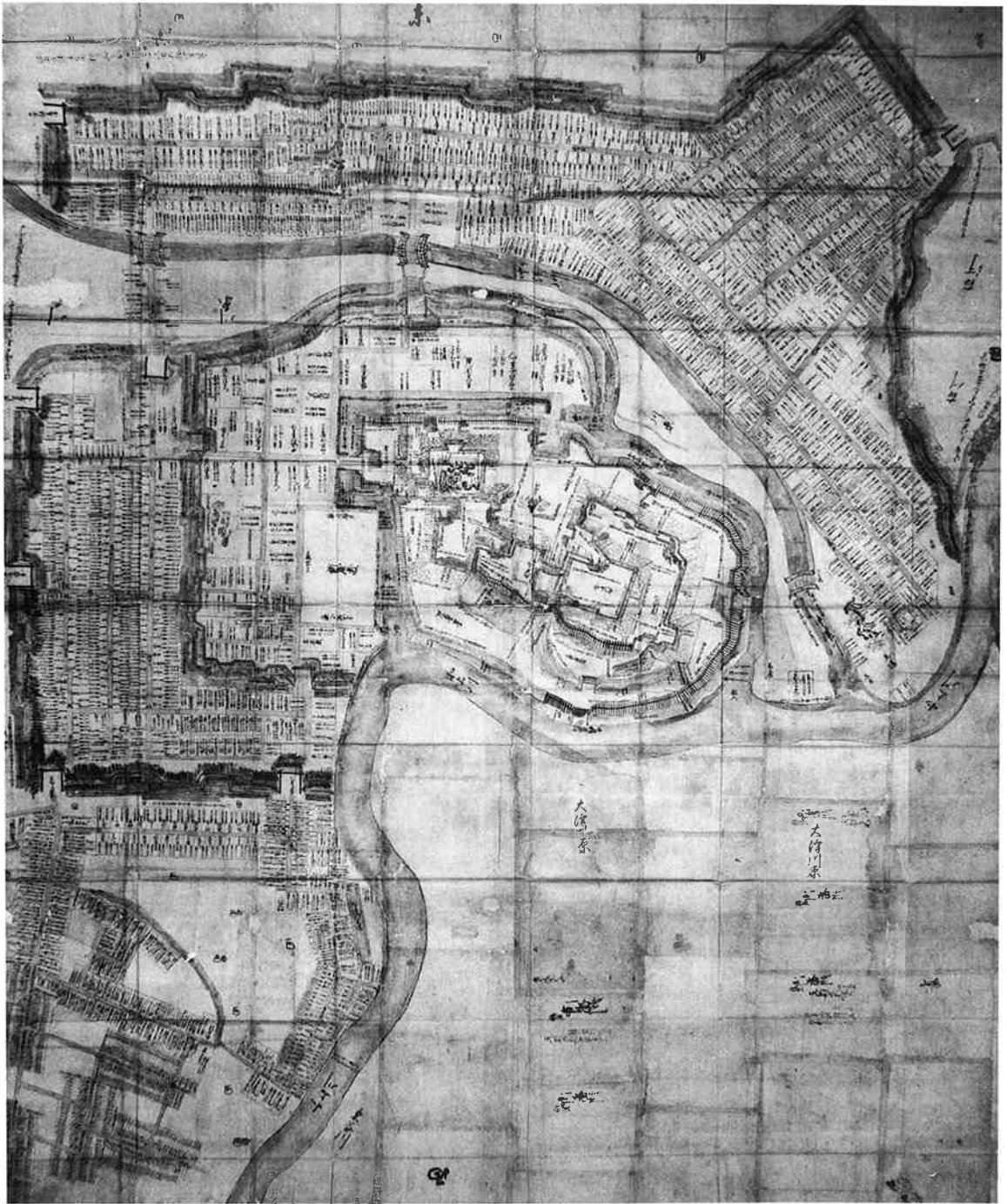


国産陶器 (瀬戸、美濃、信楽)

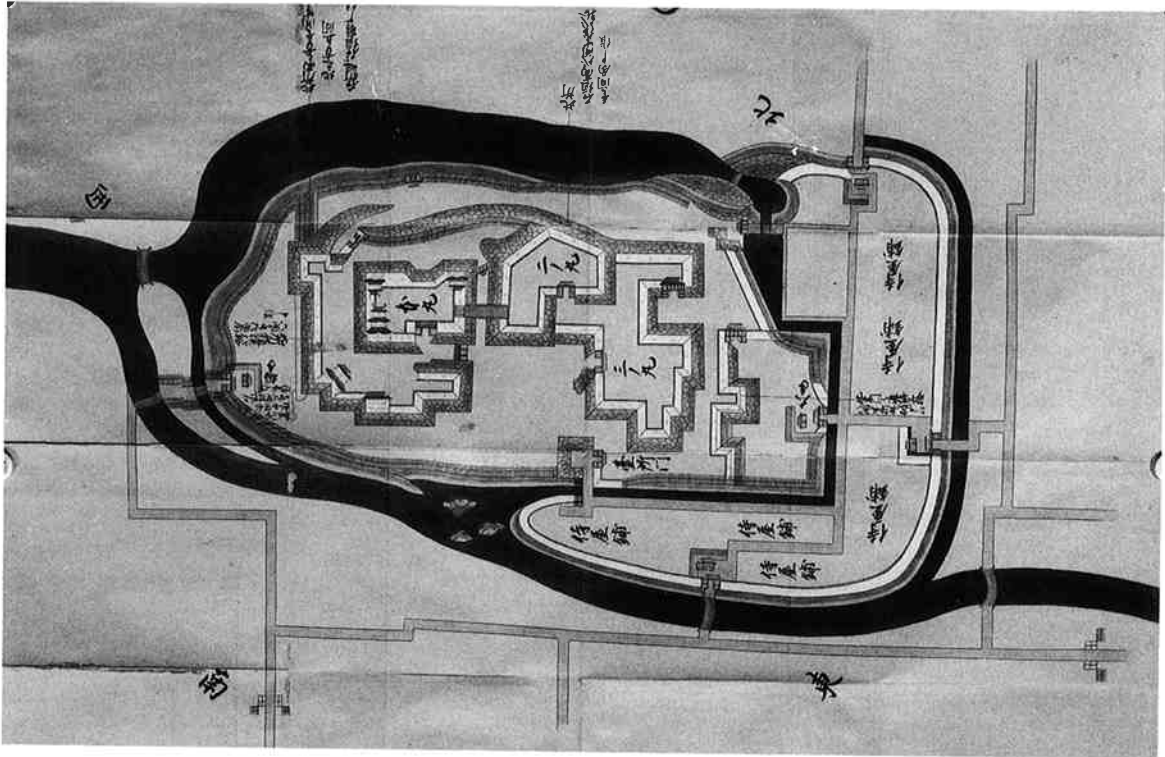
<p>万 古 系 (?) (赤 絵)</p>
----------------------------



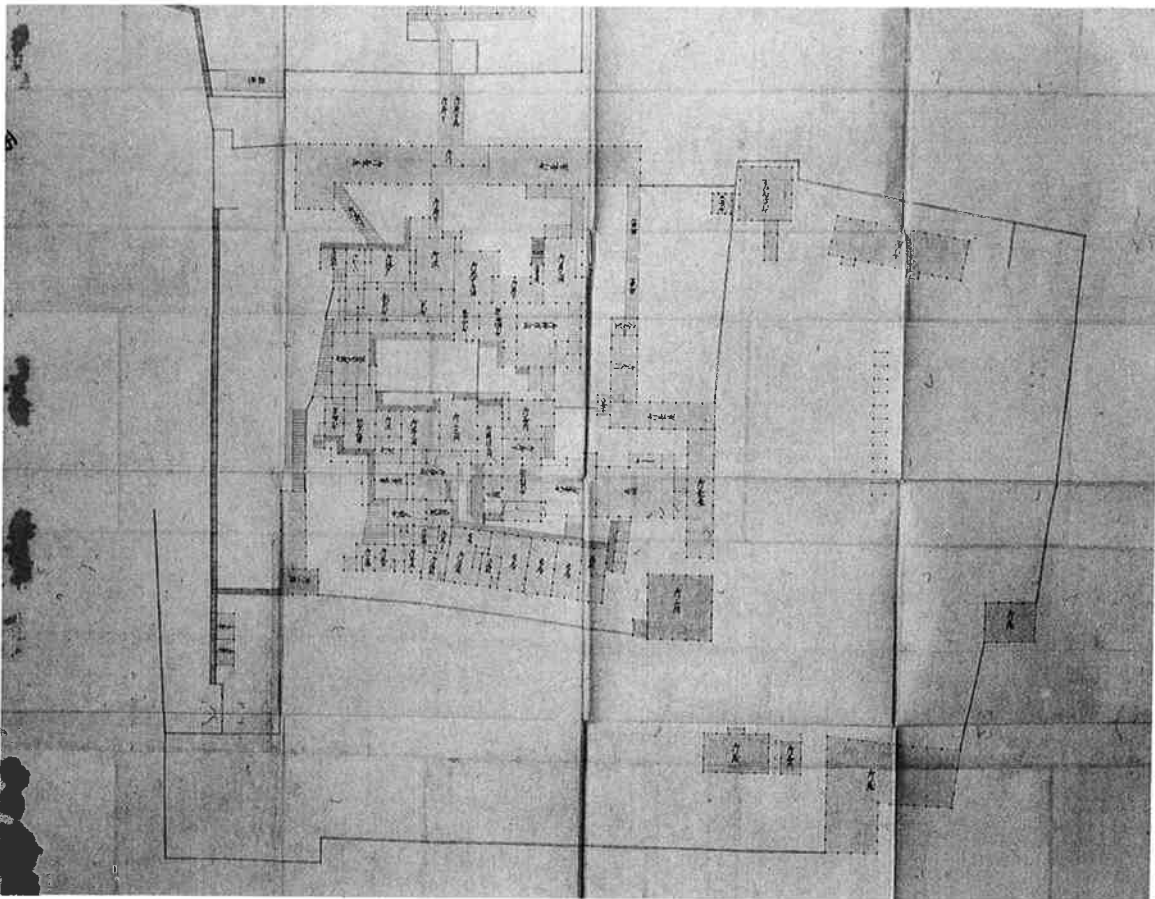
国産陶器 (赤絵)



(伝)寛永盛岡城下図 (森家蔵)



盛岡城図 (天文 5 年?)



御城大絵図 (本丸、腰曲輪部分)





盛岡城古写真（明治初年、本丸西側）



盛岡城古写真（明治年間、二ノ丸西側）



腰曲輪  
二階橋石垣  
(S→N)



二ノ丸  
三ノ丸石垣  
(W→E)



I a期の遺構  
SD411  
(W→E)



SD501  
502  
(S→N)



PL-10

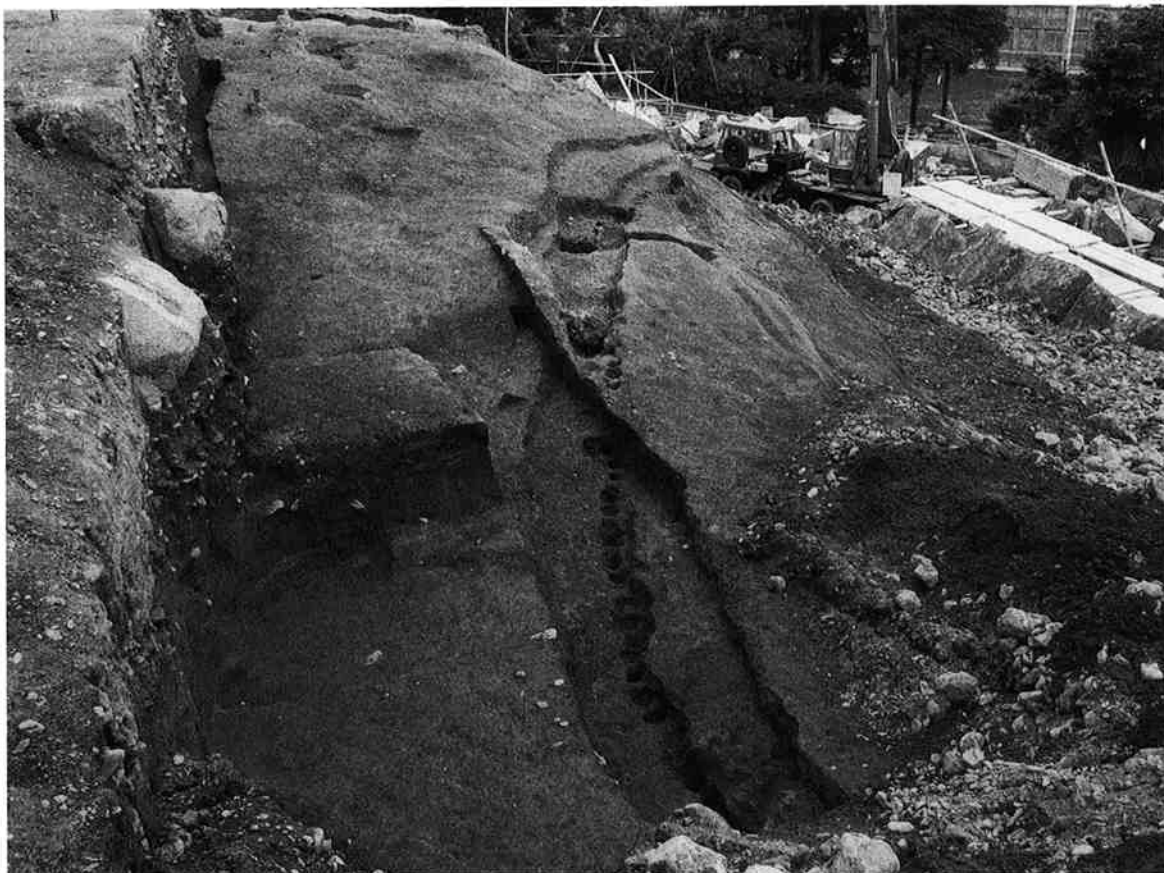


I b期の遺構  
I b期腰曲輪  
(S→N)

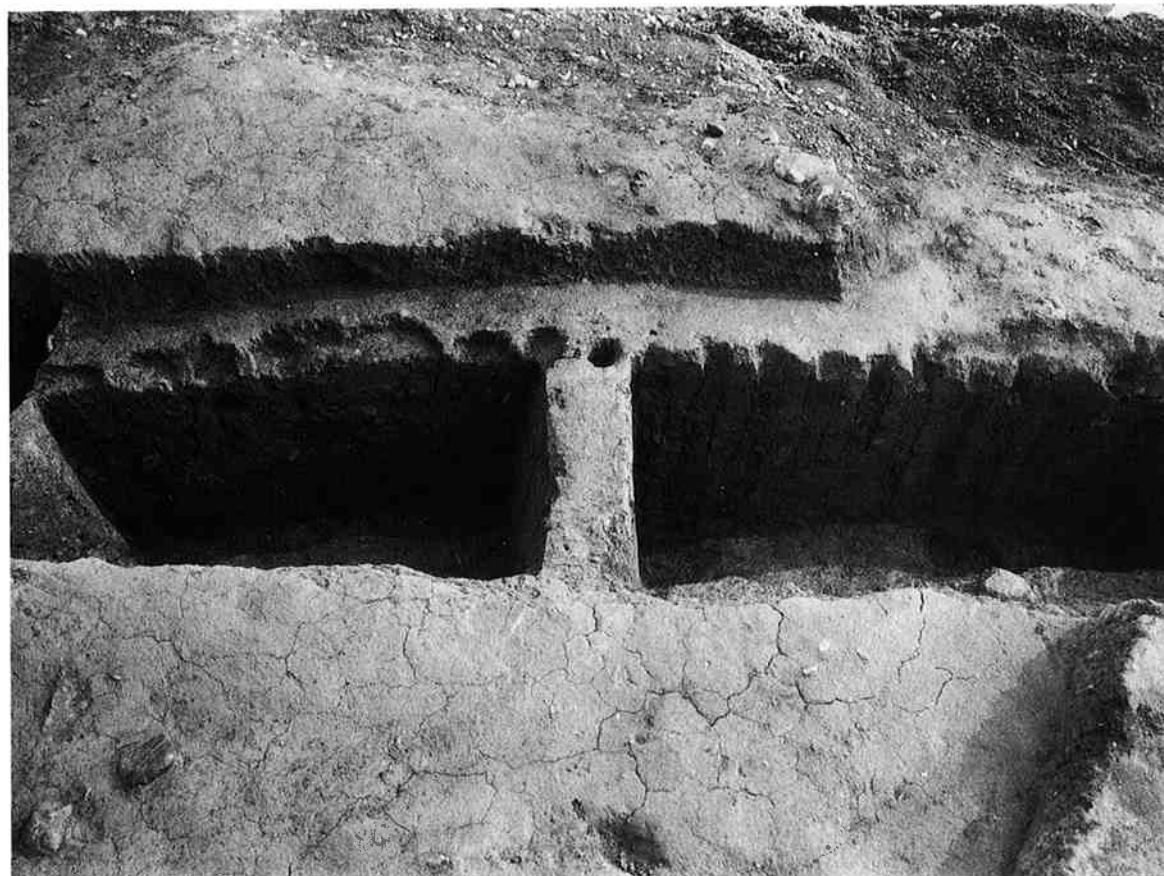


SF402  
(E→W)

II期の遺構  
SA407、408  
(NW→SE)



SA407  
断面  
(N→S)







II期の遺構  
SA407、408  
横矢掛り



SA422、423  
横矢掛り

SB410  
槽跡  
(N→S)



SB410  
槽跡武者走り  
(NE→SW)



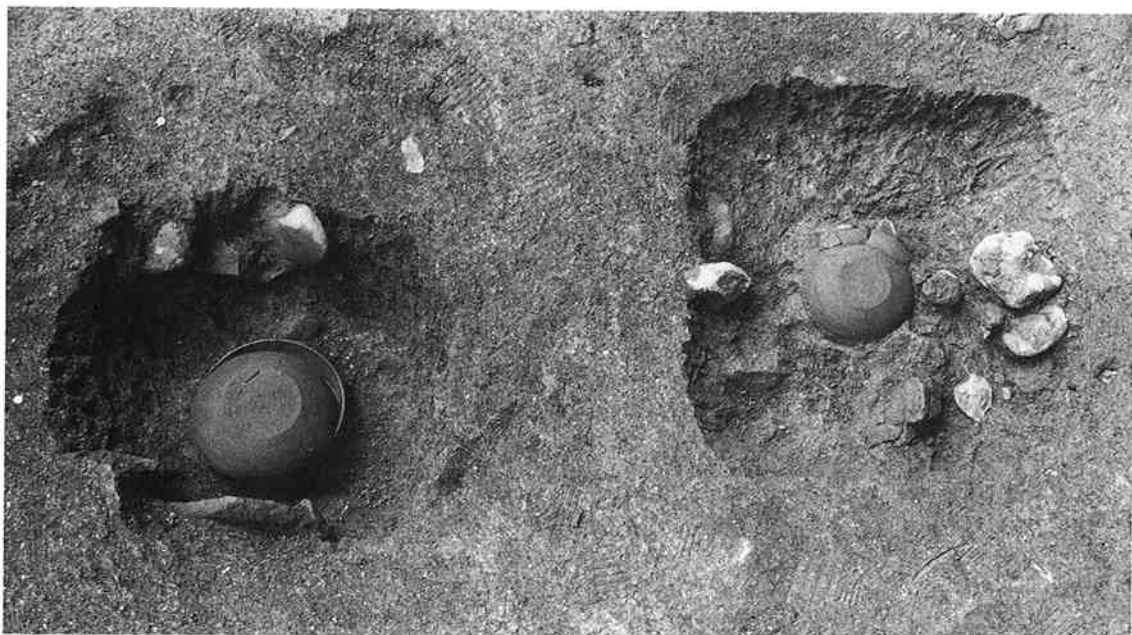




SJ401  
排水口



SX401  
地鎮跡



SB420 櫓跡



(N→S)





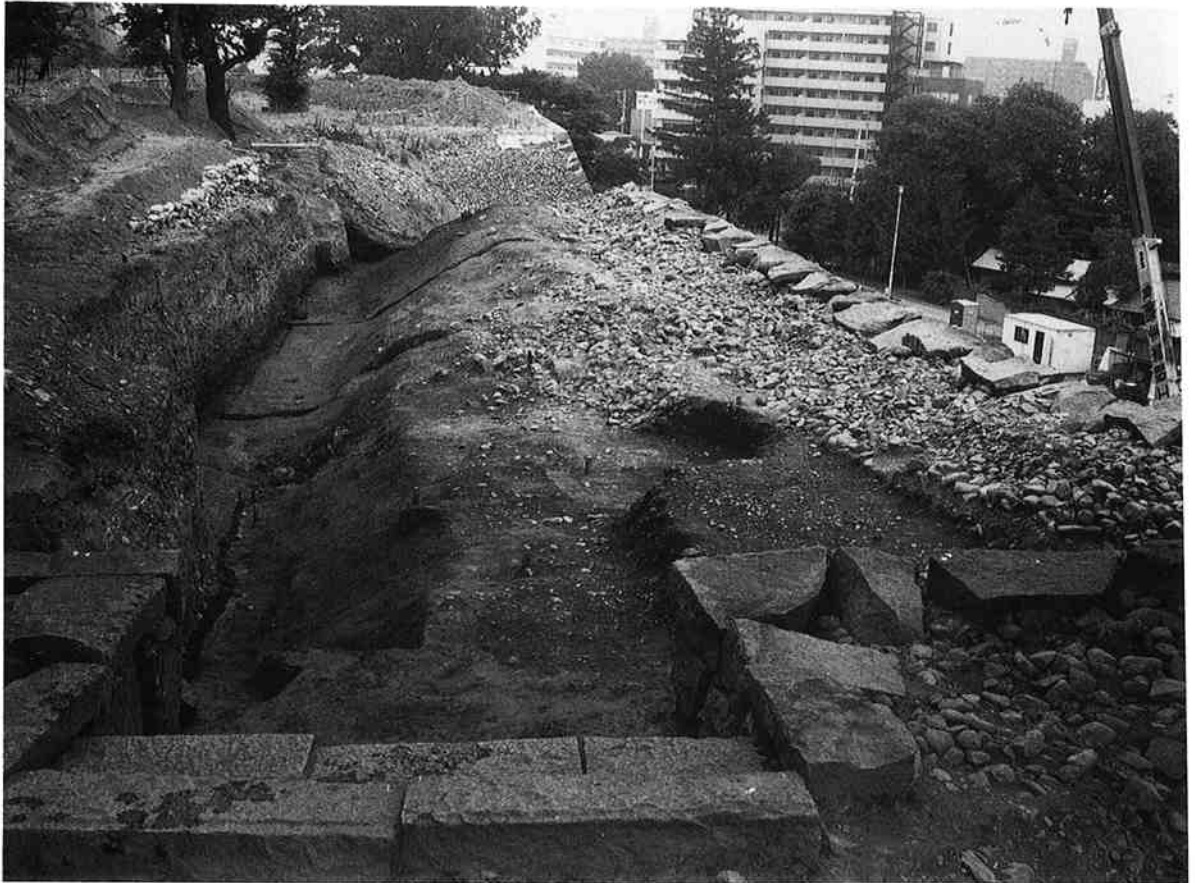
SB420二階櫓跡  
北面の新旧の石垣



西面石垣



SF410  
武者走り  
(W→E)



SF410  
武者走り  
内側の窪地と  
盛土層



SJ406暗渠  
全景  
(W→E)



入口  
(N→S)



天井石除去  
(N→S)





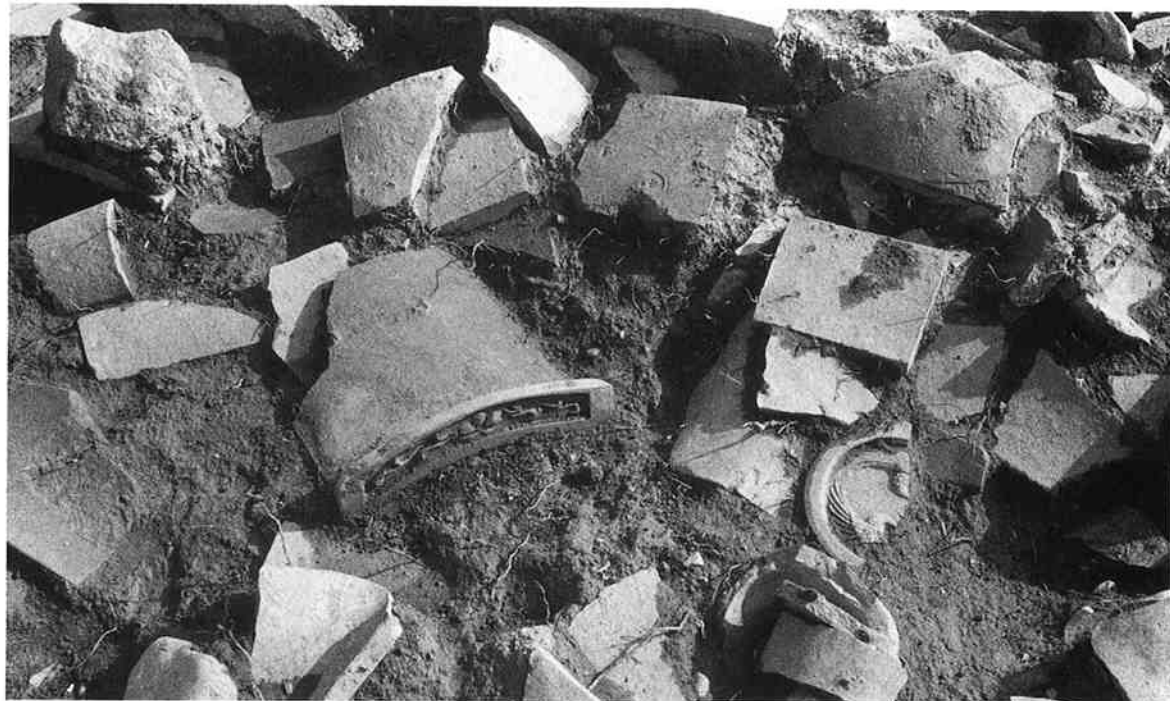
SB440櫓跡



吹上三社跡  
石段



遺物の出土状況



瓦  
(SD404)



軒丸瓦  
(3b層)



軒丸瓦  
(3f層)

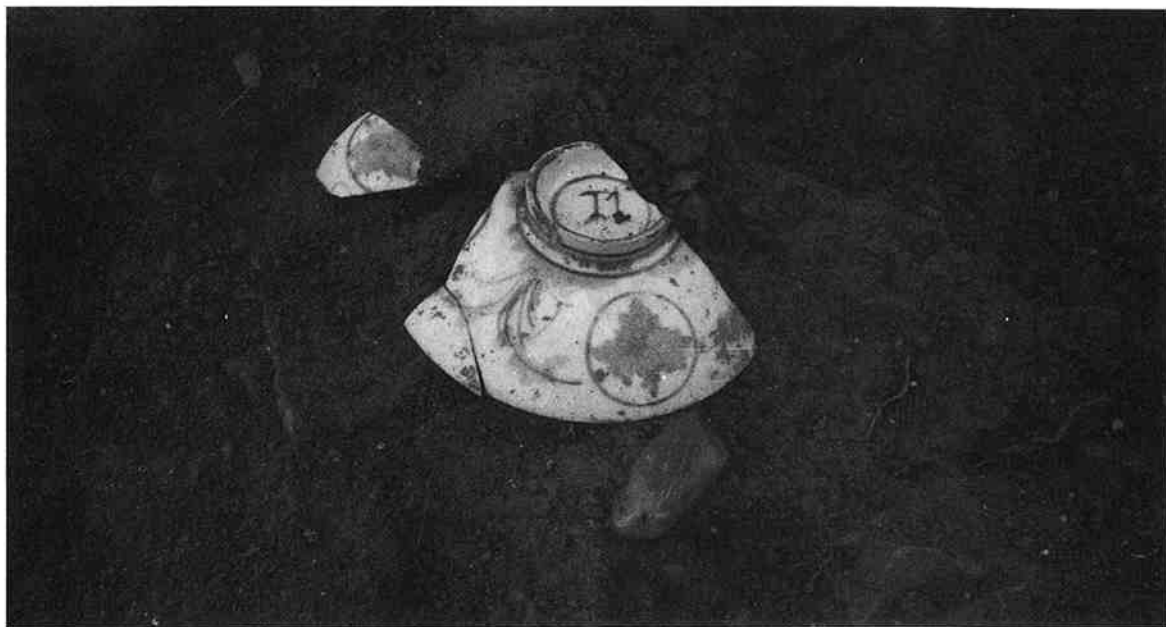


遺物出土状況

天目茶碗  
(2層上面)



染付碗蓋  
(3d層)



草履  
(SK417)





軒丸瓦  
(約 1 : 3)



1111



1121



1122



1122



1131a



1131b



1141a



1141b



1142



1143



1144



1145

軒丸瓦  
(約 1 : 3)



1251a



1251b



1252a



1252b



1252c



1254



1154



1161



1171



1181



1183



1185

軒平瓦  
(約 1 : 3)



1111



1121



1122



1122



1123



1123



1132



1131



1133



1133



1141a



1141b



1143



1145



軒平瓦  
(約 1 : 3)



2251



2252a



2252b



2252b



2253a



2253b



2253b



2253b



2254a



2254b



2254b



2255



2261



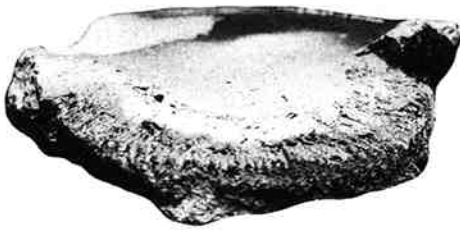
2163



軒丸瓦接合A2



軒丸瓦接合B1



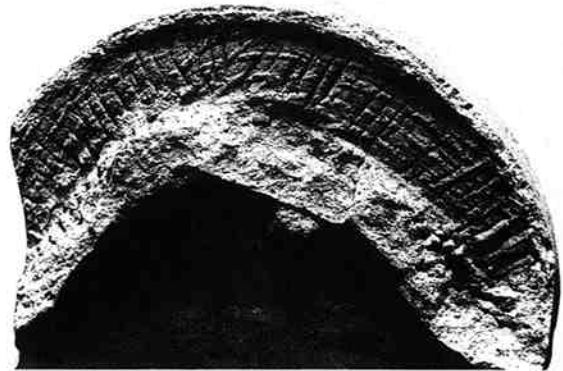
軒丸瓦接合B2



軒丸瓦接合B2



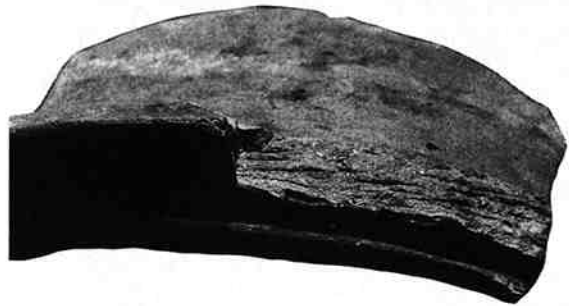
軒丸瓦接合B2



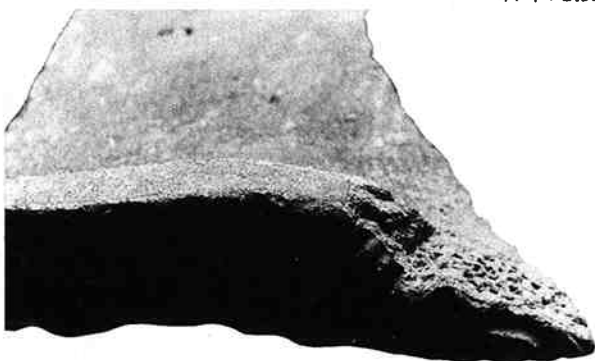
軒丸瓦接合B2



軒平瓦接合A



軒平瓦接合A

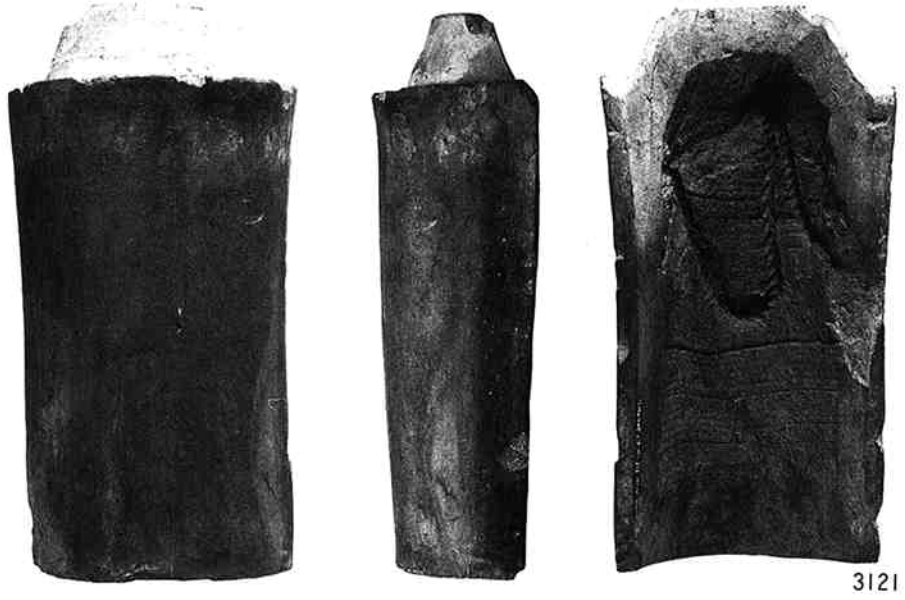


軒平瓦接合A



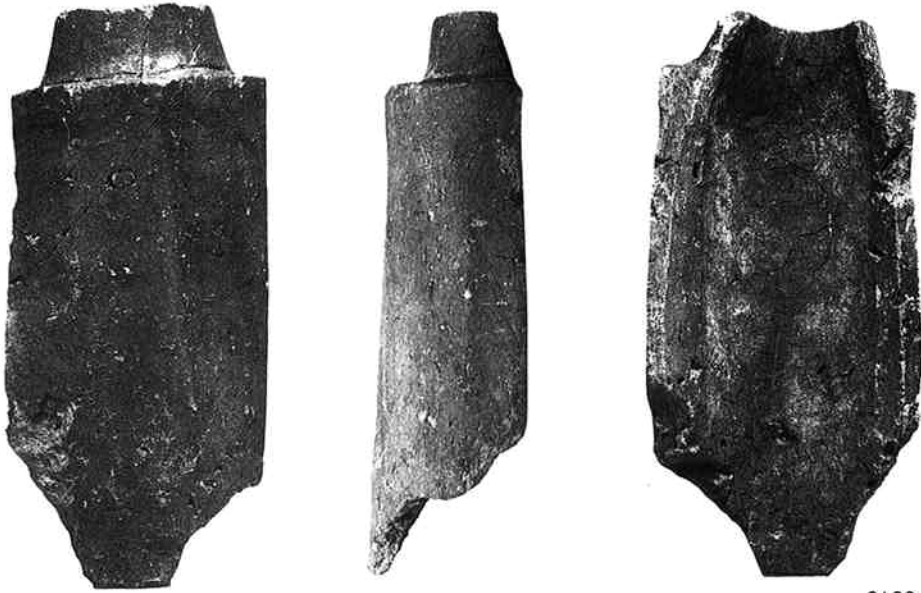
軒平瓦接合B

丸瓦  
(約 1 : 4)

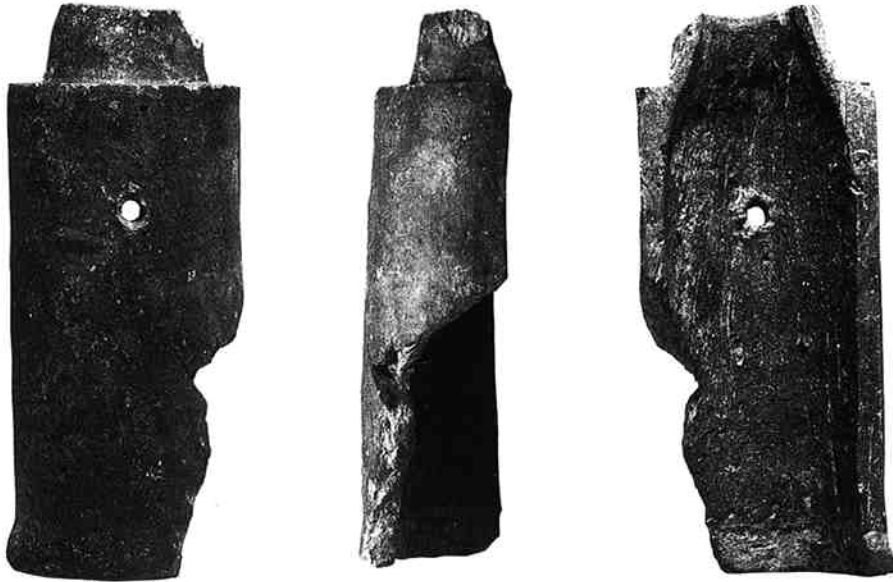




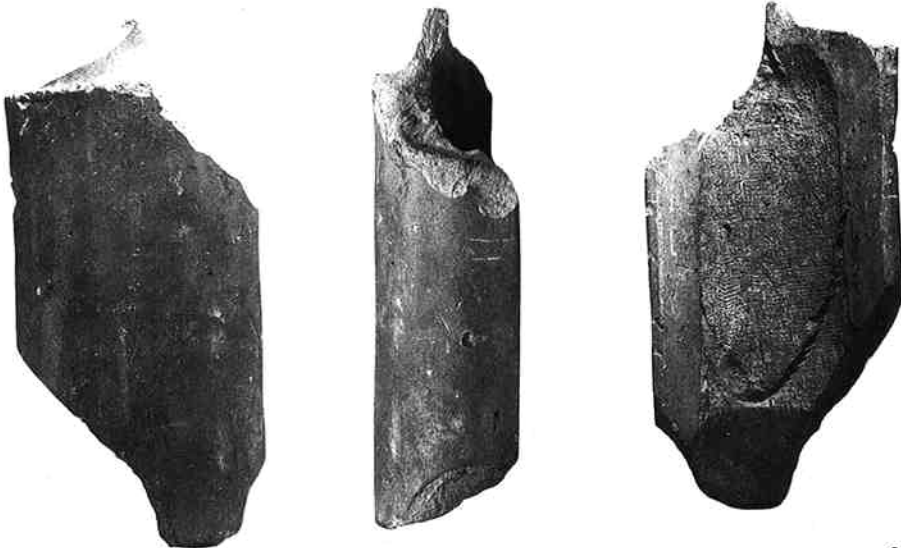
丸瓦  
(約1:4)



3126



3129



3133

丸瓦  
(約 1 : 4)



3243

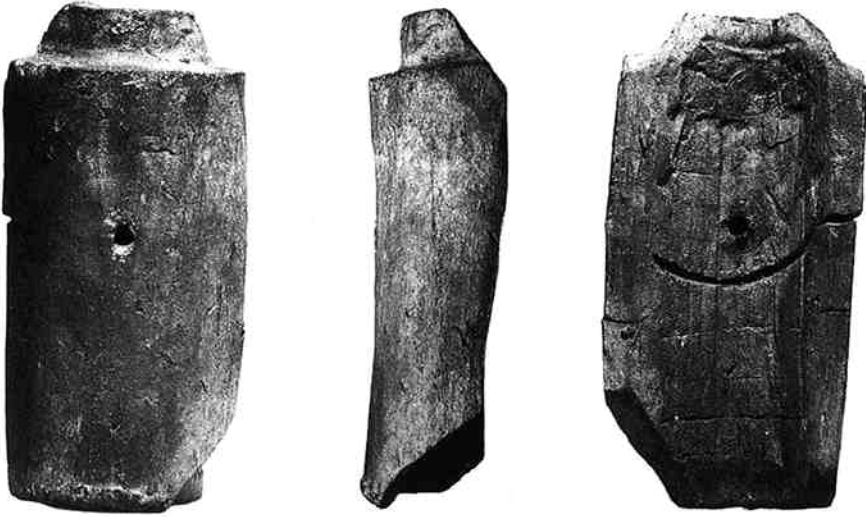


3244

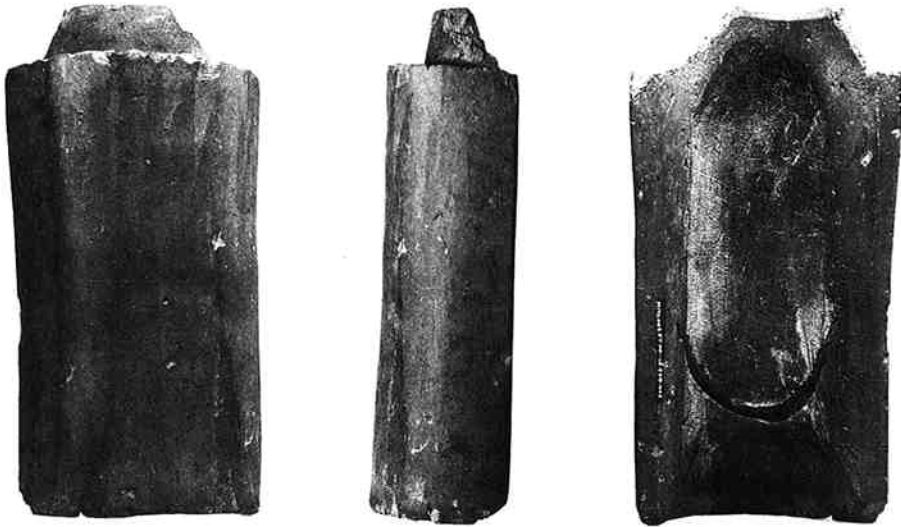


3245

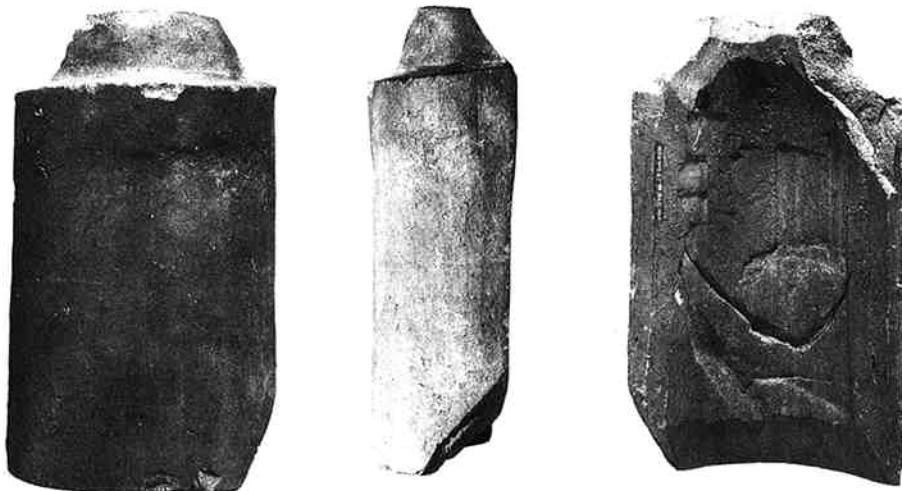
丸瓦  
(約 1 : 4)



3155



3156



3265



丸瓦  
(約 1 : 4)



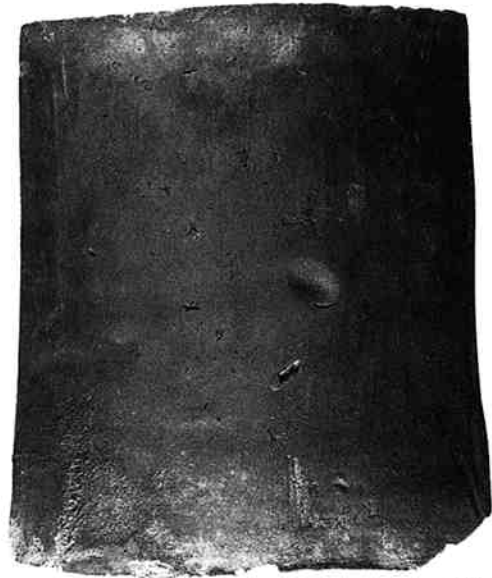
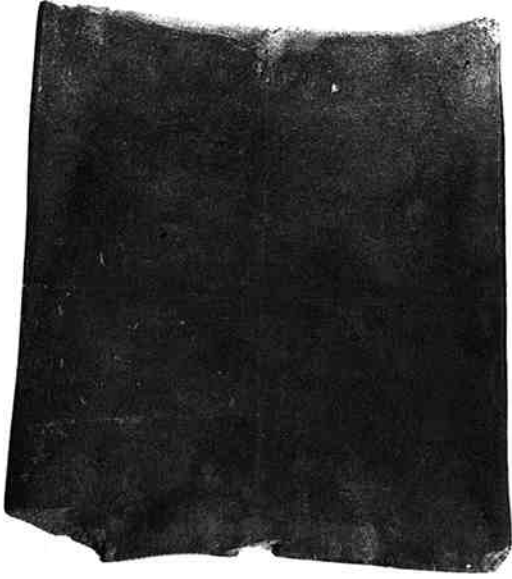
3168



3176



3284



平瓦  
(約 1 : 4)

4113



4223



4224

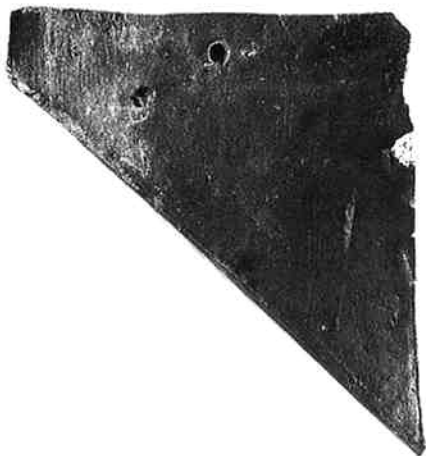
平瓦  
(約 1 : 4)



4131



脚付



垂れ付



棟瓦類  
(約 1 : 4)



5132



5233B



5233A



5133C



5243



5249



5243A



5243B



5246B



5248B

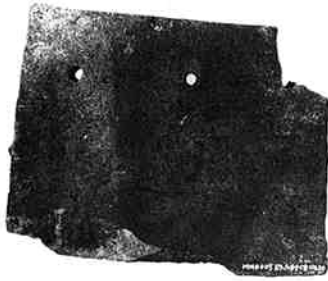


5246C

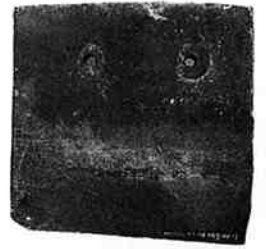


5248B

棟瓦類  
(約 1 : 4)



5161



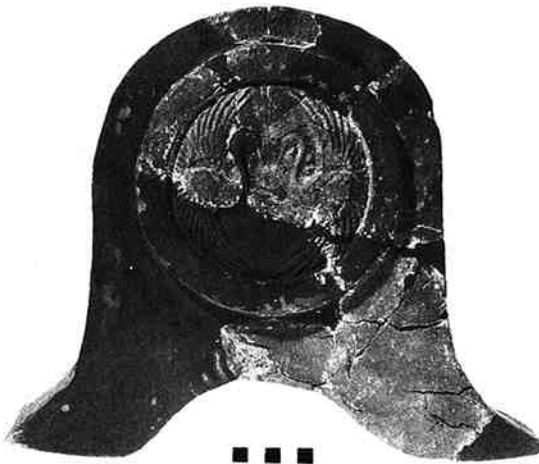
5262



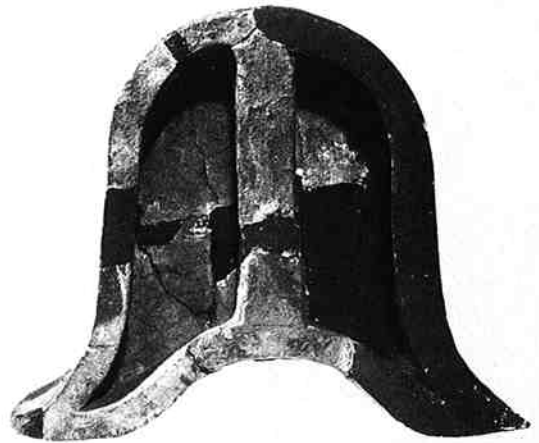
5263



5263



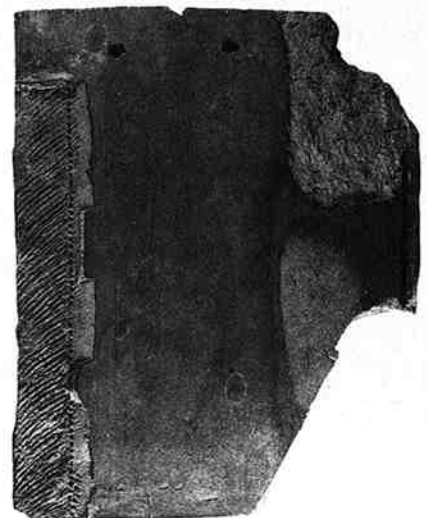
■ ■ ■



鬼瓦

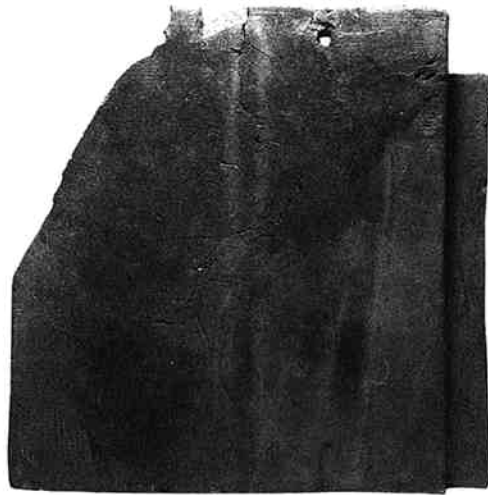
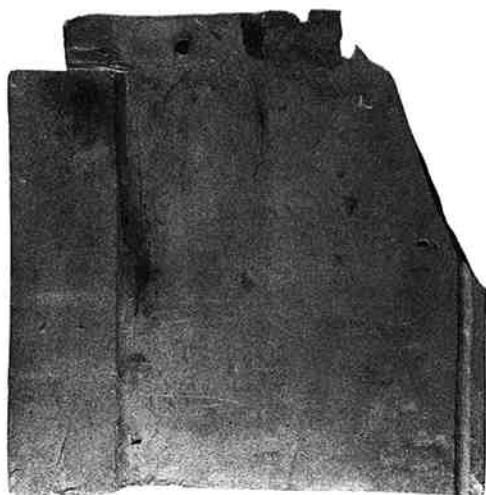


9113

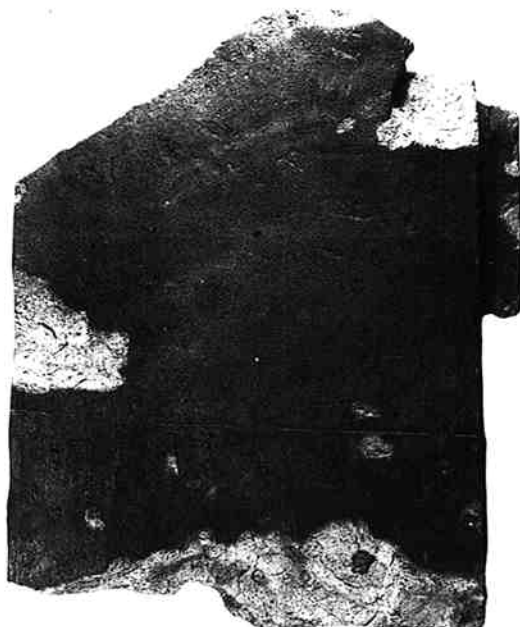
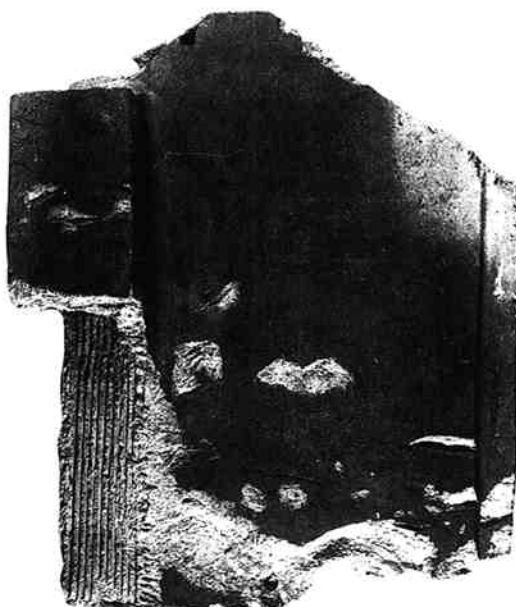


9129

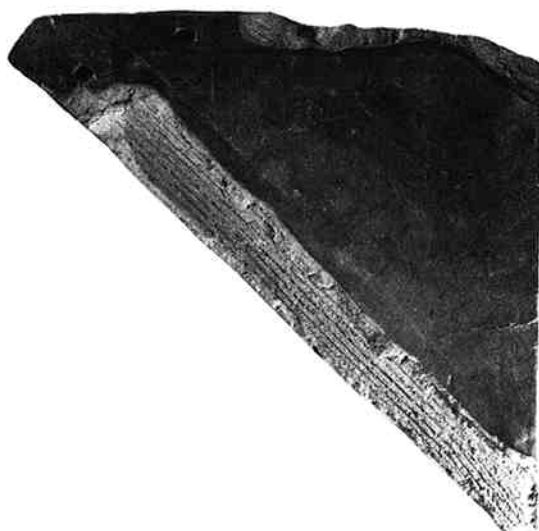
塀瓦  
(約 1 : 4)



9121



9121



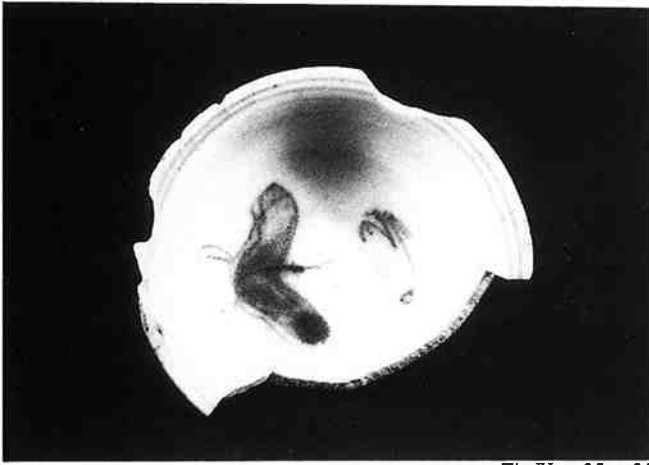
9122



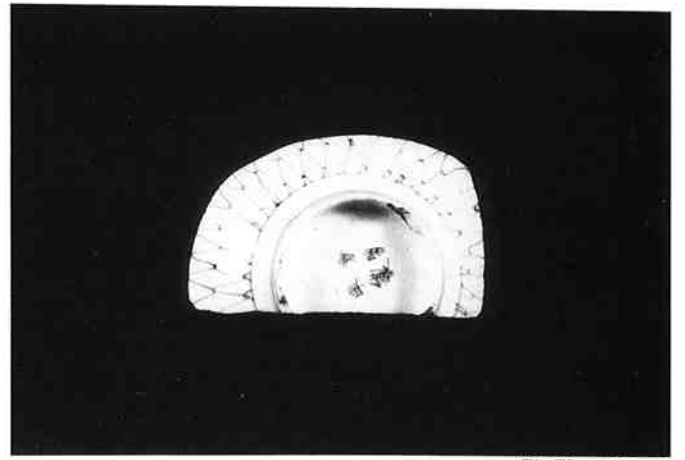
9130



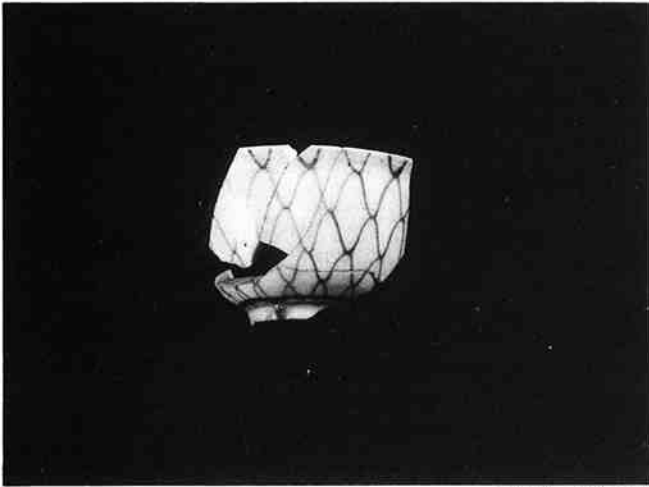
陶磁器



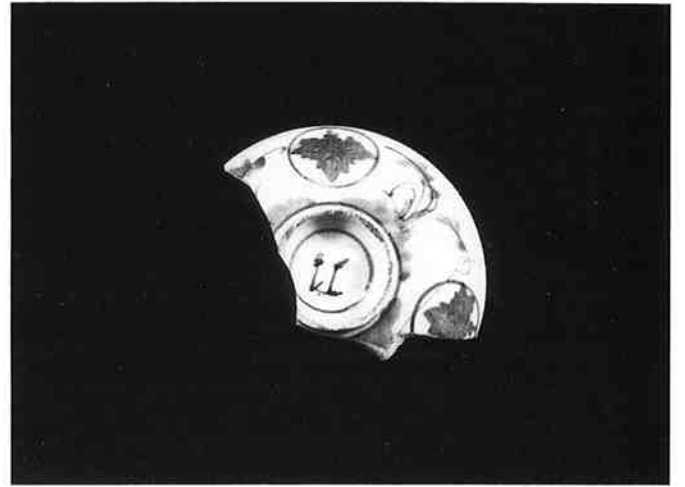
FigIV - 28 - 22



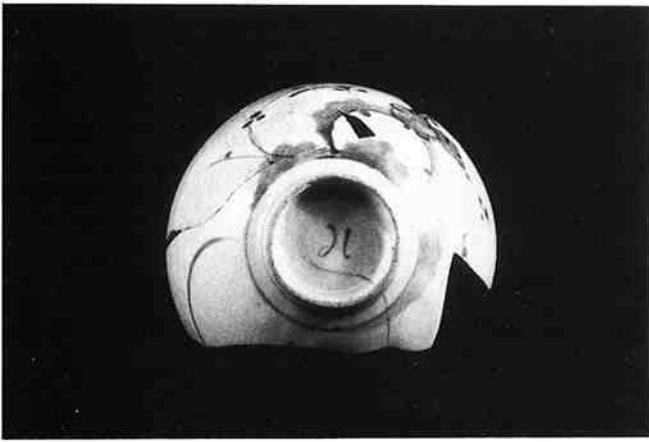
FigIV - 27 - 7



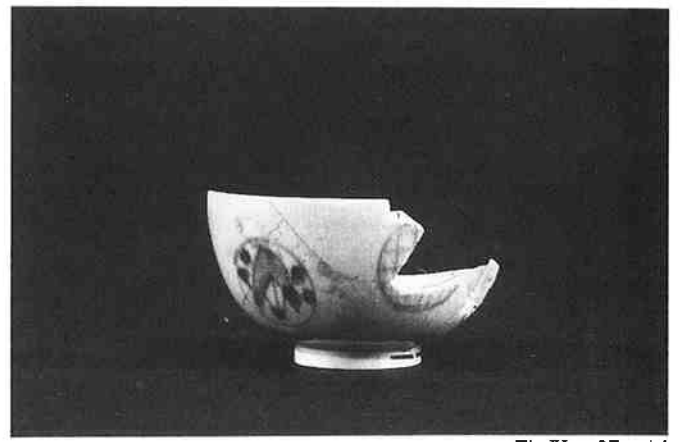
FigIV - 28 - 23



FigIV - 27 - 1



FigIV - 27 - 11



FigIV - 27 - 14



FigIV - 24 - 2



FigIV - 27 - 17

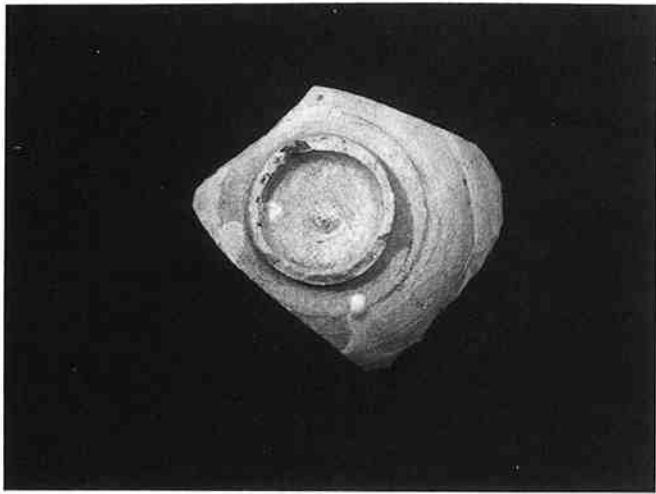


Fig IV - 24 - 1



Fig IV - 24 - 4

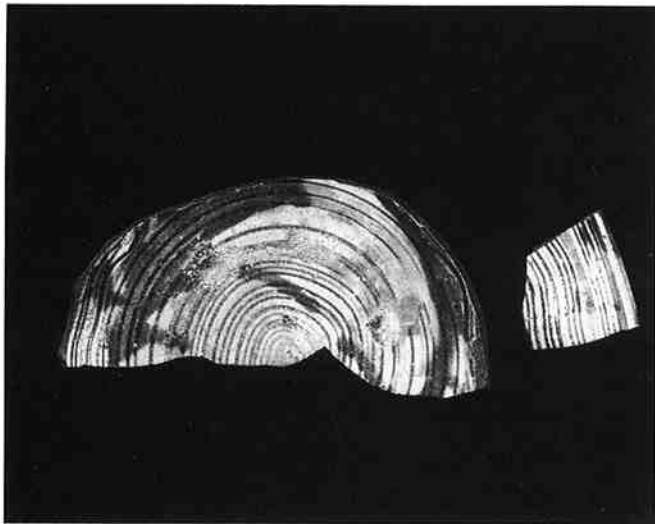


Fig IV - 24 - 5



Fig IV - 26 - 26

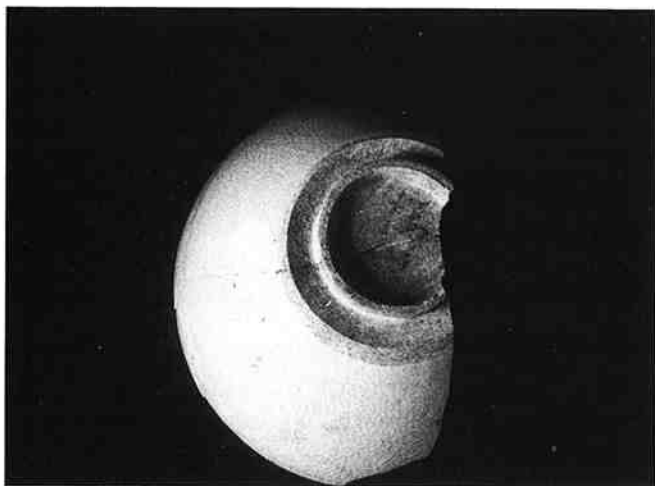


Fig IV - 25 - 5

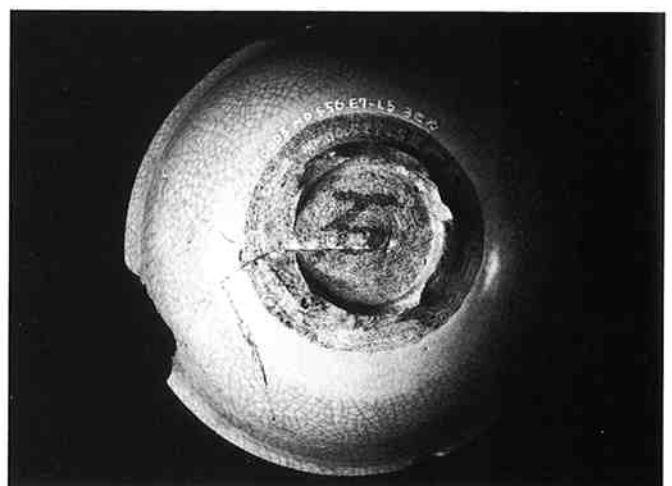


Fig IV - 25 - 9

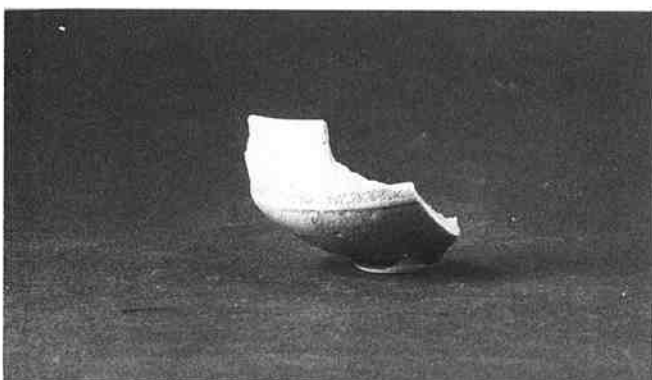


Fig IV - 25 - 7

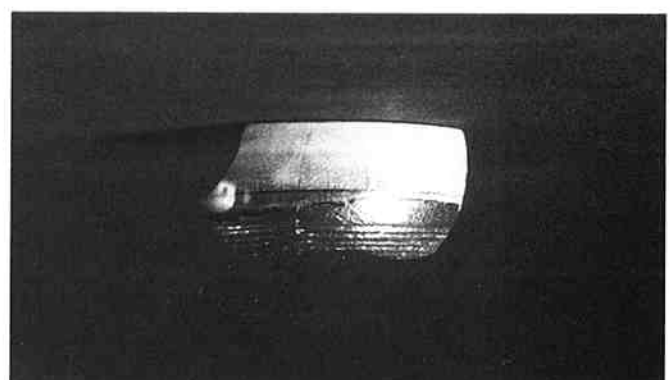


Fig IV - 25 - 8

古銭



1



2



3



4



6



7



8



9



11



12



13



14



15



16



17



18



22



24



27



25



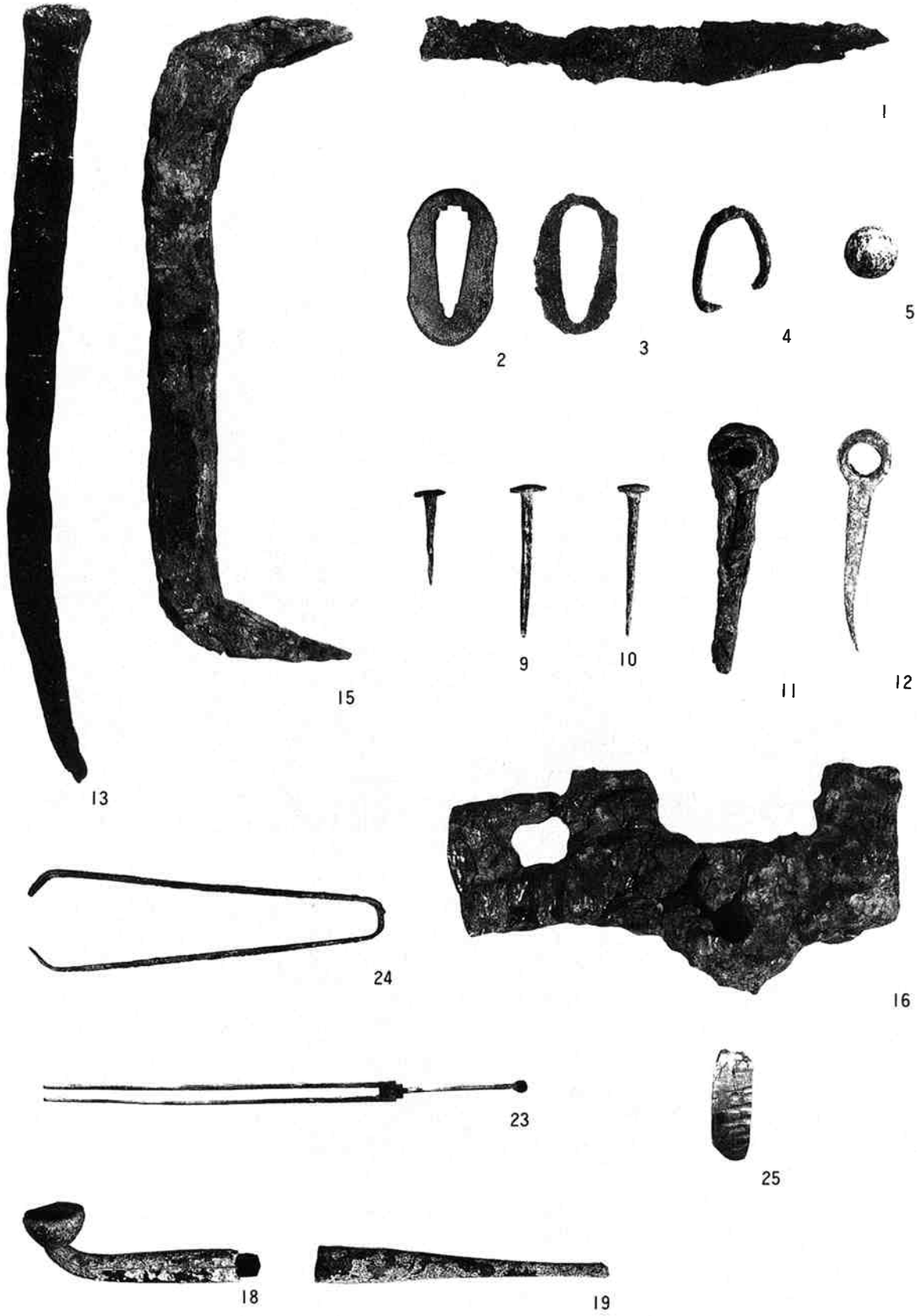
26



28



金属製品





# MORIOKA CASTLE SITE I

1991

MORIOKA CITY OFFICE

Report of Stone Wall Restoration Work

## Contents

I	Overall Explanation on Morioka Castle	
1	Geographical .....	1
2	Historical Landmark Nomination and Associated Restoration .....	2
(1)	Morioka Castle Change since Meiji era .....	2
(2)	Nomination for Historical Landmark .....	3
(3)	Development of Morioka Castle Restoration .....	3
3	Scenic View of Morioka Castle Site .....	5
II	Restoration Works	
1	Situations before Restoration Works .....	6
2	Performance of Restoration Works .....	7
3	Schedule of Restoration Works and Investigation .....	9
4	Organization for Restoration works and Investigation .....	10
III	Stone Wall Conditions	
1	Existing Conditions .....	11
(1)	Old Stone Wall constructed in the Feudal Age .....	11
(2)	Present Stone Wall .....	12
2	Construction Method and Deformation of Stone Wall .....	14
(1)	Source of Masonry Stones .....	14
(2)	Construction Method .....	16
(3)	Deformation of Stone Wall .....	22
IV	Excution of Restoration Works	
1	Preliminary Instigations .....	23
(1)	Photosurvey .....	23
(2)	Soil Investigations .....	26
(3)	Physical Removal of Stone Wall .....	33
2	Temporary Removal of Stone Wall .....	34
3	Rebuilding of Stone Wall .....	39
V	Performance of Stone Wall Restoration Works	
1	Change with Restoration .....	45
2	Stone Wall after Restoration Completion .....	48

VI	Accumulative Deformation and Its Causes	
1	Investigation of Movement	49
(1)	Observation at Fixed Points Movement	49
(2)	Instrumentation	57
(3)	Subsidence on Ground Surface	59
(4)	Observation Results	70
(5)	Interpretation of Observation Results	74
(6)	Conclusions	76
VII	Outstanding Problems	
1	Stone Wall after Renovation Works	80
2	Causes of Deformation	80

### Plates

Pl. 1	Total View of Morioka Castle Site
Pl. 2	Part View of Morioka Castle Site
Pl. 3	Plan of Morioka Castle(the Kan'ei era)
Pl. 4	Plan of Morioka Castle(the Meiwa era)
Pl. 5	Stone Wall before Restoration Works
Pl. 6	Stone Wall before Restoration Works
Pl. 7	Stone Wall after Restoration Works
Pl. 8	Stone Wall after Restoration Works
Pl. 9	Construction phase
Pl.10	Construction phase
Pl.11	Construction phase
Pl.12	Construction phase
Pl.13	Construction phase
Pl.14	Construction phase

### Figures

Fig. I - 1	Location of Morioka Castle Site	1
Fig. I - 2	Plan of Morioka Castle	4
Fig.II- 1	Location of Restoration Works	8
Fig.III- 1	Present Stone Wall	13
Fig.III- 2	Geology and Source of Masonry Stones	15
Fig.III- 3	Construction Method	19
Fig.III- 4	Deformation of Stone Wall	21
Fig.IV- 1	Plan of Morioka Castle(1873)	27
Fig.IV- 2	Castle sites on Morioka Fief	28

Fig.IV- 3	Plan of Morioka Castle City	29
Fig.V- 1	Change with Restoration	45
Fig.V- 2	Change with Restoration	46
Fig.V- 3	Change with Restoration	19
Fig.V- 4	Change with Restoration	47
Fig.V- 5	Change with Restoration	47
Fig.V- 6	Change with Restoration	47
Fig.V- 7	Change with Restoration	48
Fig.V- 8	Lateral Plan of Stone Wall(1)	appendices
Fig.V- 9	Lateral Plan of Stone Wall(2)	appendices
Fig.V-10	Lateral Plan of Stone Wall(3)	appendices
Fig.V-11	Lateral Plan of Stone Wall(4)	appendices
Fig.V-12	Lateral Plan of Stone Wall(5)	appendices
Fig.V-13	Lateral Plan of Stone Wall(6)	appendices
Fig.V-14	Lateral Plan of Stone Wall(7)	appendices
Fig.V-15	Lateral Plan of Stone Wall(8)	appendices
Fig.V-16	Lateral Plan of Stone Wall(9)	appendices
Fig.V-17	Lateral Plan of Stone Wall(10)	appendices
Fig.V-18	Lateral Plan of Stone Wall(11)	appendices
Fig.V-19	Lateral Plan of Stone Wall(12)	appendices
Fig.V-20	Lateral Plan of Stone Wall(13)	appendices
Fig.V-21	Lateral Plan of Stone Wall(14)	appendices
Fig.V-22	Lateral Plan of Stone Wall(15)	appendices
Fig.VI- 1	Location of Observation	50
Fig.VI- 2	Movement Model of Stone Wall	52
Fig.VI- 3	Movement Quantity of Stone Wall(X)	53
Fig.VI- 4	Movement Quantity of Stone Wall(Y)	54
Fig.VI- 5	Movement Quantity of Stone Wall(Z)	55
Fig.VI- 6	Location of Instrumentation	57
Fig.VI- 7	System of Instrumentation	58
Fig.VI- 8	Location of Subsidence Observetion	59
Fig.VI- 9	Temperature at Surface of Stone Wall per Day	60
Fig.VI-10	Movement Quantity of Stone Wall(X) per Day	61
Fig.VI-11	Movement Quantity of Stone Wall(Y・Z) per Day	62
Fig.VI-12	Movement Inclination per Day	63
Fig.VI-13	Deformation at Surface of Stone Wall per Day	64
Fig.VI-14	Deformation ao Surface of Stone Wall per Day	65
Fig.VI-15	Main Stress par Day	66

Fig.VI-16	Main Stress per Day	67
Fig.VI-17	Angle of Main Stress per Day	68
Fig.VI-18	Movement of Subsidence on Ground Surface per Hour	69
Fig.VI-19	Presumptive Movement of Subsidence	73

## Tables

Tab.II- 1	Actual Results of Stone Wall Restoration Works	7
Tab.VI- 1	Observation Results	56
Tab.VI- 2	Head and Quantity of Observation	57
Tab.VI- 3	Frequency of Observation	58
Tab.VI- 4	Highest and Lowest Temperature	59
Tab.VI- 5	Compare Eighth data with Third Observation data	72

---

## Report of the archaeological research

### Contents

I	Historical Transition of Morioka Castle	
1	Before Construction	99
2	Construction	100
3	Restoration	106
4	Since the Meiji era	109
II	Historical Environment and Structure of Morioka Castle	
1	Castle Sites on the Morioka and Hachinohe Fiefs	115
2	Morioka Castle City	118
3	Structure of Morioka Castle	120
III	Method and Course of Excavations	
1	Purpose and Method	124
III	Excavations at the Circumference of Main Citadel	
1	Structure at the Circumference of Main Citadel	128
2	Remains	130
(1)	The First Stage Remains	130
(2)	The Second Stage Remains	135
(3)	The Third Stage Remains	140
3	Artifacts	164
(1)	Potteries, Ceramics and Porcelains	164
(2)	Metal Materials	176
(3)	Stone Materials	181



(4) Roof Tiles .....	182
V Consideration of Excavations	
1 Transition of Remains and Ceramics at the Circumference of Main Citadel .....	214
2 Chronological Phase of Roof Tiles .....	228
VII Generalization of Excavations .....	241

## Plates

Pl. 1	Ceramics and Porcelains of Chinese Make
Pl. 2	Porcelains of Japanese Make(Hizen)
Pl. 3	Ceramics of Japanese Make(Seto, Mino)
Pl. 4	Ceramics of Japanese Make(Mino, Shigaraki)
Pl. 5	Plan of Morioka Castle City(the Kan'ei era)
Pl. 6	Plan of Morioka Castle (1742?)
Pl. 7	Old Photo on Morioka Castle(the Meiji era)
Pl. 8	Main Citadel,Secondary Citadel and Thirdly Citadel
Pl. 9	Distribution of the First( I b)Stage Remains
Pl.10	Distribution of the First( I a)Stage Remains
Pl.11	Distribution of the Second(II)Stage Remains
Pl.12	Distribution of the Third(III)Stage Remains
Pl.13	SB410 Remains of Turret
Pl.14	SJ401 Remains of Drainade,SX401 Remains of Ground-breaking ceremony
Pl.15	SB420 Remains of Turret
Pl.16	SB420 Remains of Turret
Pl.17	ST410 Inside of Wall
Pl.18	SJ406 Remains of Drainade
Pl.19	SB440 Remains of Turret
Pl.20	Close-up of Artifacts
Pl.21	Close-up of Artifacts
Pl.22	Round Eaves Tiles(1)
Pl.23	Round Eaves Tiles(2)
Pl.24	Flat Eaves Tiles(1)
Pl.25	Flat Eaves Tiles(2)
Pl.26	Joint Method of Eaves Tiles
Pl.27	Round Roof Tiles(1)
Pl.28	Round Roof Tiles(2)
Pl.29	Round Roof Tiles(3)
Pl.30	Round Roof Tiles(4)
Pl.31	Round Roof Tiles(5)

Pl.32	Flat Roof Tiles(1)
Pl.33	Flat Roof Tiles(2)
Pl.34	Ridge Tiles
Pl.35	Ridge End Tiles
Pl.36	Wall Roof Tiles
Pl.37	Ceramics and Porcelains(1)
Pl.38	Ceramics and Porcelains(2)
Pl.39	Coins
Pl.40	Iron Materials

## Figures

Fig. I - 1	Old Sketch of Morioka by Morioka-Sunago	100
Fig. I - 2	Plan of Morioka Castle City(the Kan'ei era)	101
Fig. I - 3	A Letter from Nanbu Toshinao to Kabanai Sanzaemon	102
Fig. I - 4	Remains of River at Morioka	103
Fig. I - 5	Plan of Morioka Castle City(the An'ei era)	105
Fig. I - 6	Permit of Stone Wall Restoratin Work (1673,1680)	107
Fig. I - 7	Permit of Stone Wall Restratement Work (1703)	108
Fig. I - 8	Plan of Morioka Castle(1873)	111
Fig.II- 1	Castle Sites on Morioka Fief	117
Fig.II- 2	Plan of Morioka Castle City	119
Fig.II- 3	Structure of Morioka Castle	121
Fig.III- 1	Research Grids	125
Fig.III- 2	Location of Excavations	127
Fig.IV- 1	Cross Section at the Circumference of Main Citadel	129
Fig.IV- 2	Distribution of the First(Ia) Stage Remains	131
Fig.IV- 3	Distribution of the First(Ib) Stage Remains	132
Fig.IV- 4	Mouth of Citadel of the First(Ib) Stage	134
Fig.IV- 5	Distribution of the Second(II) Stage Remains	136
Fig.IV- 6	SA407,SA408 Remains of Stockade	138
Fig.IV- 7	SA422,SA423 Remains of Stockade	139
Fig.IV- 8	Stone with Inscription in Black Ink and carved Mark	140
Fig.IV- 9	Distribution of the Third(IIIa) Stage Remains	142
Fig.IV-10	SB420(A) Remains of Turret	144
Fig.IV-11	Distribution of the Third(IIIb) Stage Remains	146
Fig.IV-12	Distribution of the Third(IIIc) Stage Remains	148
Fig.IV-13	SB440 Remains of Turret	150
Fig.IV-14	Distribution of the Third(IIId) Stage Remains	152

Fig.IV-15	Distribution of the Third(IIIe)Stage Remains	154
Fig.IV-16	SB420(B) Remains of Turret	157
Fig.IV-17	Distribution of the Third(IIIe)Stage Remains at Center	158
Fig.IV-18	Distribution of the Third(IIIf) Stage Remains	160
Fig.IV-19	Distribution of the Third(IIIf)Stage Remains at Southeast	162
Fig.IV-20	Distribution of the Third(IIIf)Stage Remains at Southwest	163
Fig.IV-21	Potteries	164
Fig.IV-22	Ceramics of Japanese Make(Seto,Mito)	166
Fig.IV-23	Ceramics of Japanese Make(Seto,Mito,Owari,Shigaraki)	167
Fig.IV-24	Ceramics of Japanese Make(Karatsu)	168
Fig.IV-25	Ceramics of Japanese Make(1)	169
Fig.IV-26	Ceramics of Japanese Make(2)	170
Fig.IV-27	Porcelains of Japasese Make(Hizen-1)	172
Fig.IV-28	Porcelains of Japasese Make(Hizen-2)	173
Fig.IV-29	Porcelains of Japanese Make	175
Fig.IV-30	Porcelains of Chinese Make(1)	177
Fig.IV-31	Porcelains of Chinese Make(2)	178
Fig.IV-32	Coins	179
Fig.IV-33	Metal Materials	180
Fig.IV-34	Wooden and Stone Materiales	181
Fig.IV-35	Production Method of Round Roof Tiles	183
Fig.IV-36	Joint Method of Round Eaves Tiles	183
Fig.IV-37	Production Method of Flat Roof Tiles	185
Fig.IV-38	Production Method of Wall Roof Tiles	186
Fig.IV-39	Pattern of Round Eaves Tiles(1)	188
Fig.IV-40	Pattern of Round Eaves Tiles(2)	189
Fig.IV-41	Pattern of Round Eaves Tiles(3)	190
Fig.IV-42	Pattern of Round Eaves Tiles(4)	191
Fig.IV-43	Pattern of Round Eaves Tiles(5)	192
Fig.IV-44	Pattern of Flat Eaves Tiles(1)	193
Fig.IV-45	Pattern of Flat Eaves Tiles(2)	194
Fig.IV-46	Pattern of Flat Eaves Tiles(3)	195
Fig.IV-47	Pattern of Flat Eaves Tiles(4)	196
Fig.IV-48	Pattern of Flat Eaves Tiles(5)	197
Fig.IV-49	Portion Name of Round Roof Tiles	198
Fig.IV-50	Type of Round Roof Tiles(1)	199
Fig.IV-51	Type of Round Roof Tiles(2)	200
Fig.IV-52	Type of Round Roof Tiles(3)	201

Fig.IV-53	Type of Round Roof Tiles(4)	202
Fig.IV-54	Form of Flat Roof Tiles	203
Fig.IV-55	Type of Flat Roof Tiles	204
Fig.IV-56	Type of Round Ridge Tiles(1)	205
Fig.IV-57	Type of Round Ridge Tiles(2)	206
Fig.IV-58	Type of Flat Ridge Tiles	207
Fig.IV-59	Type of board Ridge Tiles	208
Fig.IV-60	Form of Ridge End Tiles	209
Fig.IV-61	Form of Dragon-mask-fish Shaped Ridge End Tiles	210
Fig.IV-62	Form of Wall Roof Tiles(1)	211
Fig.IV-63	Form of Wall Roof Tiles(2)	212
Fig.IV-64	Cross Section at the Circumference of Main Citadel	付図
Fig.V- 1	Transition at the Cercumference of Main Citadel(1)	216
Fig.V- 2	Transition at the Cercumference of Main Citadel(2)	217
Fig.V- 3	Transition of Ceramics and Porcelains(1)	218
Fig.V- 4	Transition of Ceramics and Porcelains(2)	220
Fig.V- 5	Transition of Ceramics and Porcelains(3)	222
Fig.V- 6	Transition of Roof Tiles(1)	234
Fig.V- 7	Transition of Roof Tiles(2)	236

### Tables

Tab. I - 1	Feudal Lordes Nanbu Morioka Clan	102
Tab. I - 2	Scale on the Morioka Castle	104
Tab. I - 3	Buildings in the Morioka Castle	110
Tab. I - 4	Chronological Table of Restores	112
Tab.II- 1	Continuation of Castles on the Morioka and Hachinohe Fiefs	116
Tab.III- 1	Course of Excavations	126
Tab.IV- 1	Quantity of Roof Tiles	213
Tab.V- 1	Transition of Remains and Ceramics at the Cercumference of Main Citadel	227



**盛岡城跡I**

— **第1期保存整備事業報告書** —

平成3年3月30日

発行 盛岡市・盛岡市教育委員会  
〒020 盛岡市内丸12番'2号

印刷 山口北州印刷株式会社  
〒020-01  
盛岡市青山四丁目10番5号

東 面

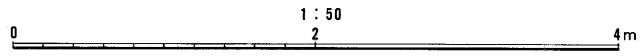
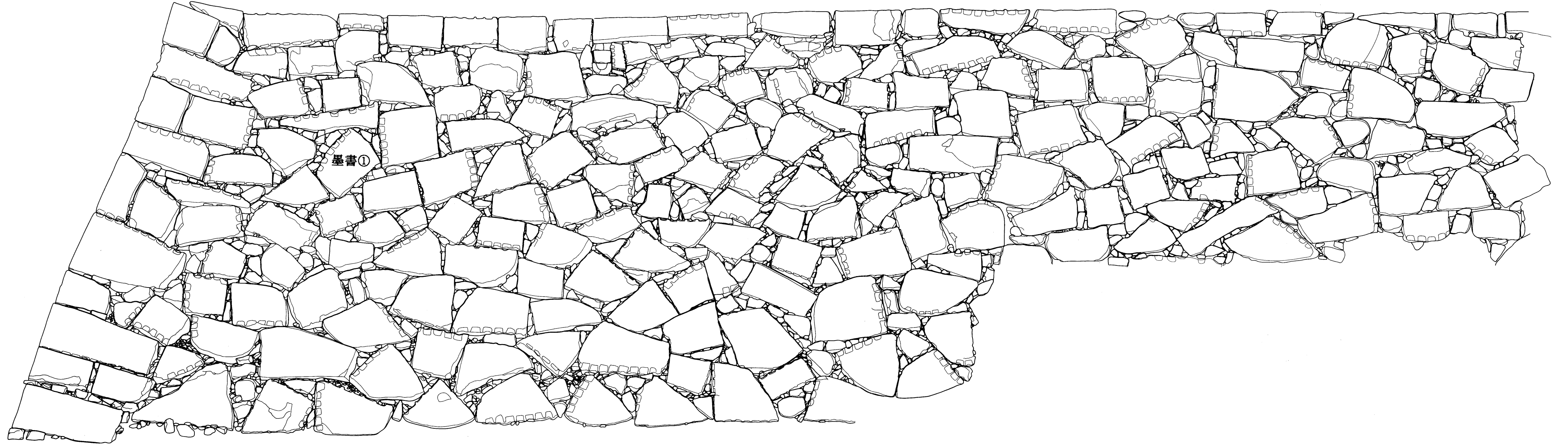
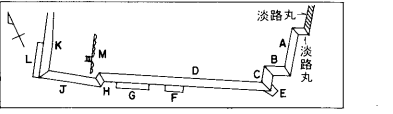


Fig. V - 8 盛岡城跡石垣立面図(淡路丸東面修復前)

淡路丸南面

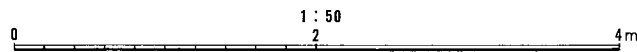
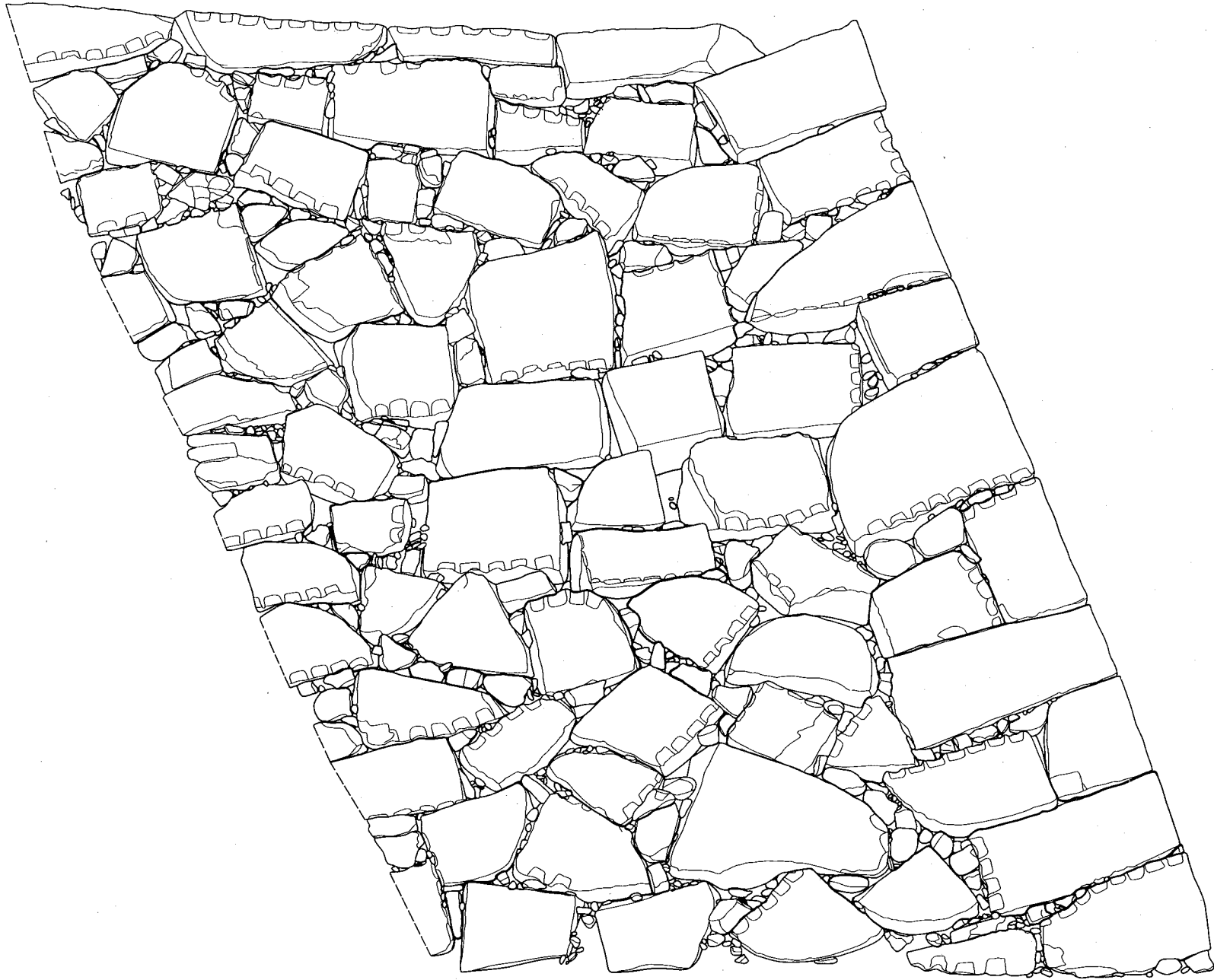
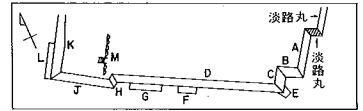
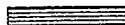

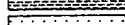


Fig. V - 9 盛岡城跡石垣立面图(淡路丸南面修復前)

凡 例

-  新石に交換
-  石の加工(ハツリ)
-  石の加工(切斷)

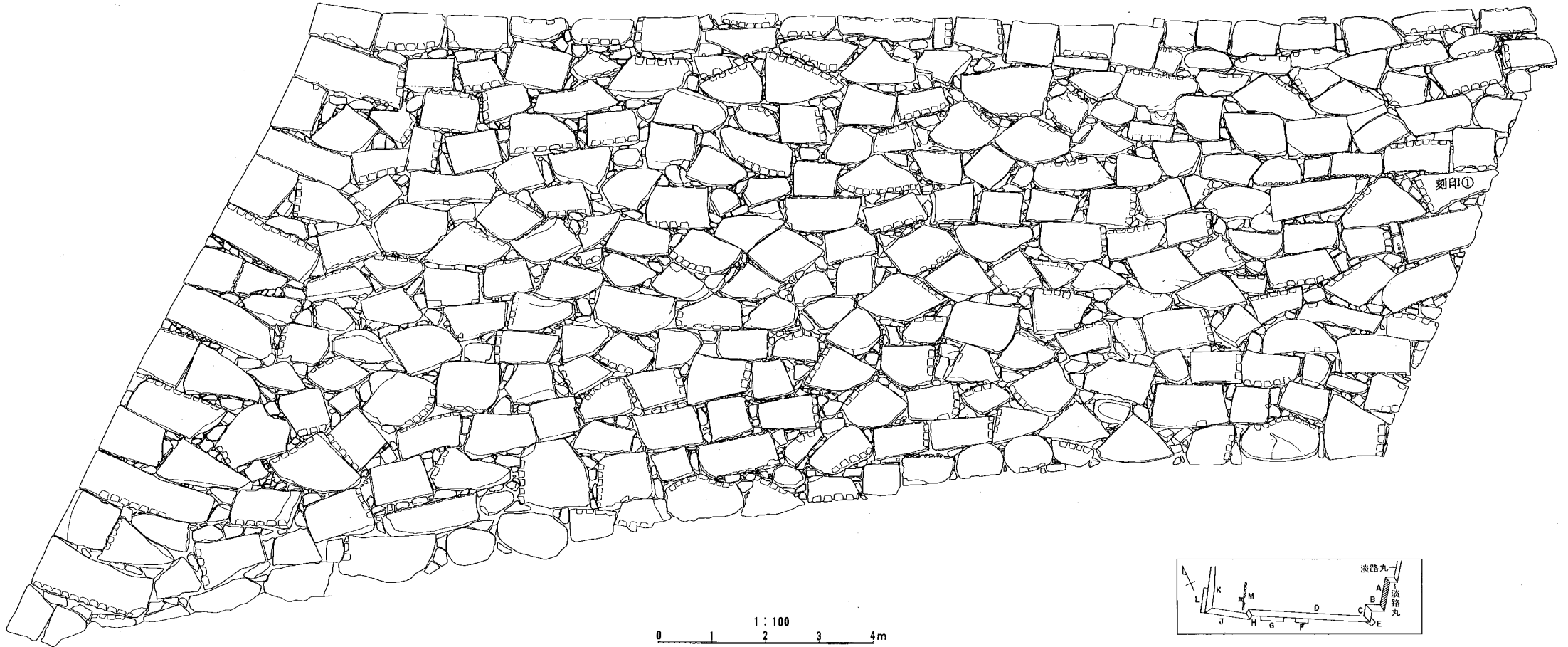
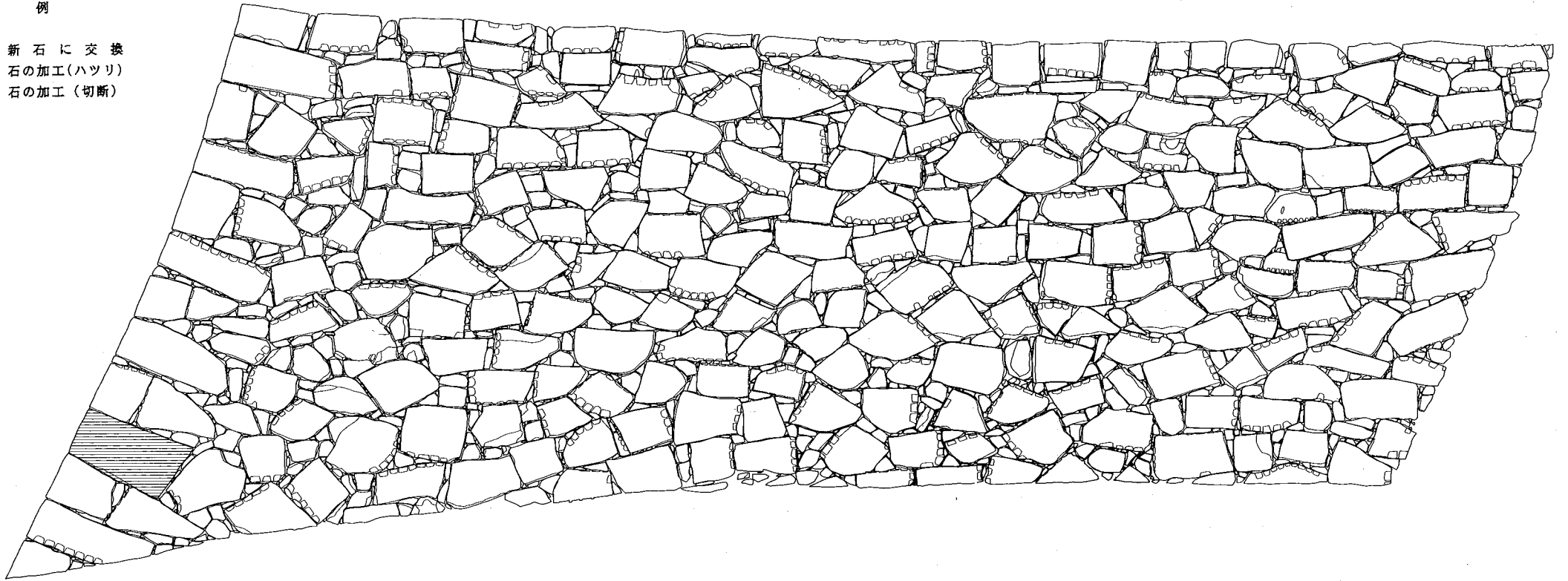
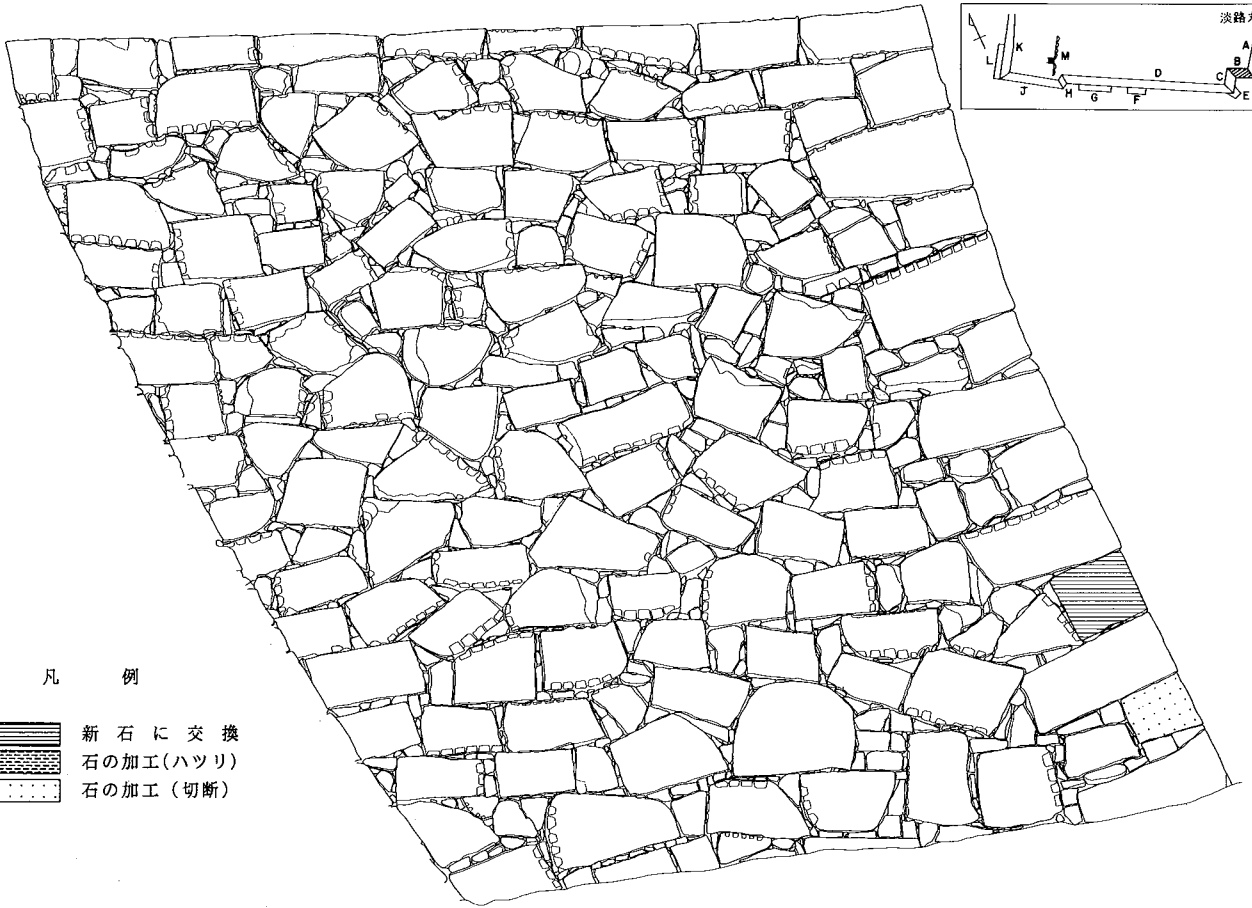
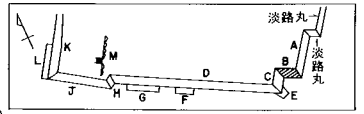


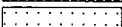


Fig. V - 10 盛岡城跡石垣立面図(A面)上・修復後/下・修復前





凡 例

-  新石に交換
-  石の加工(ハツリ)
-  石の加工(切断)

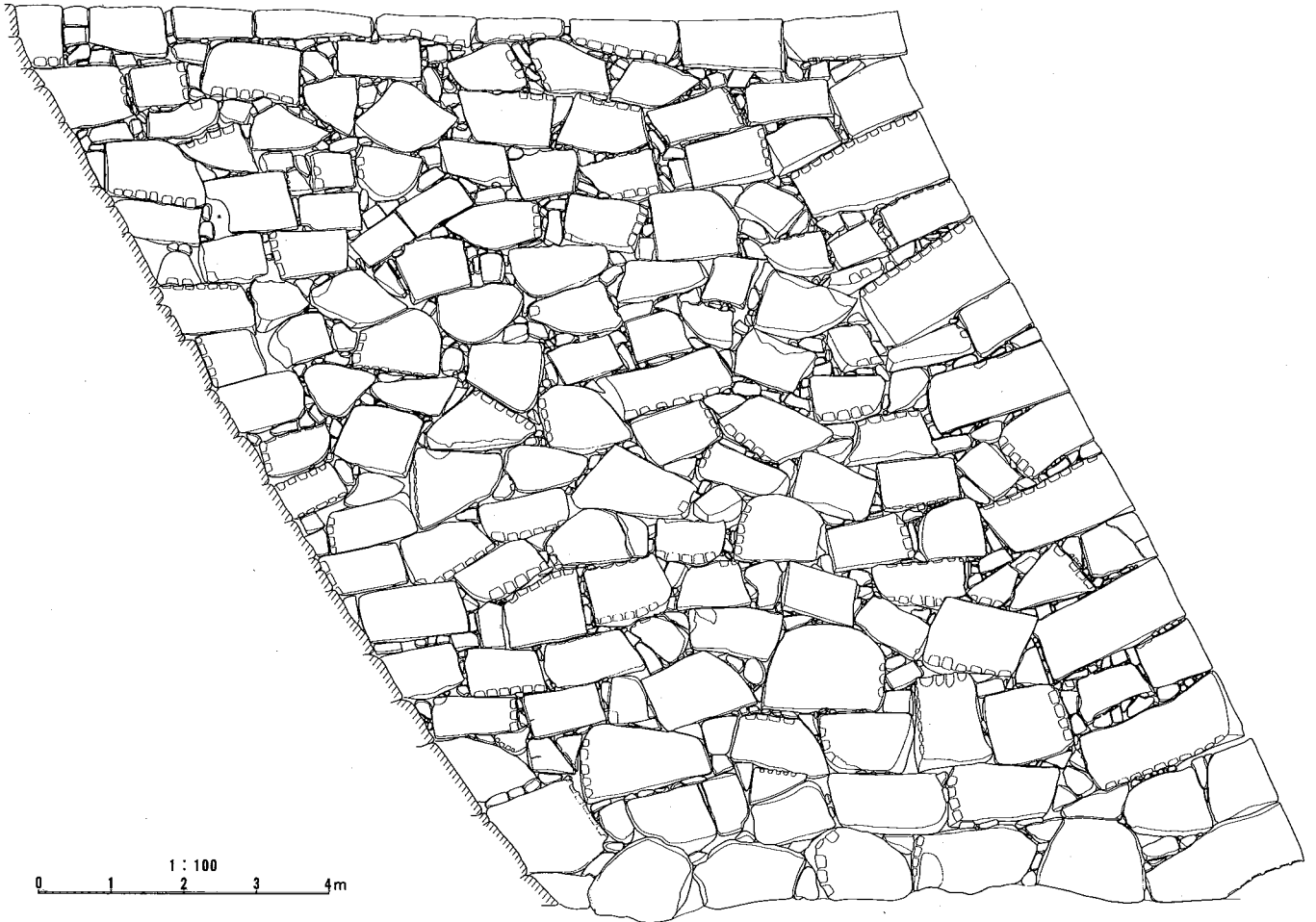


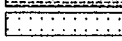
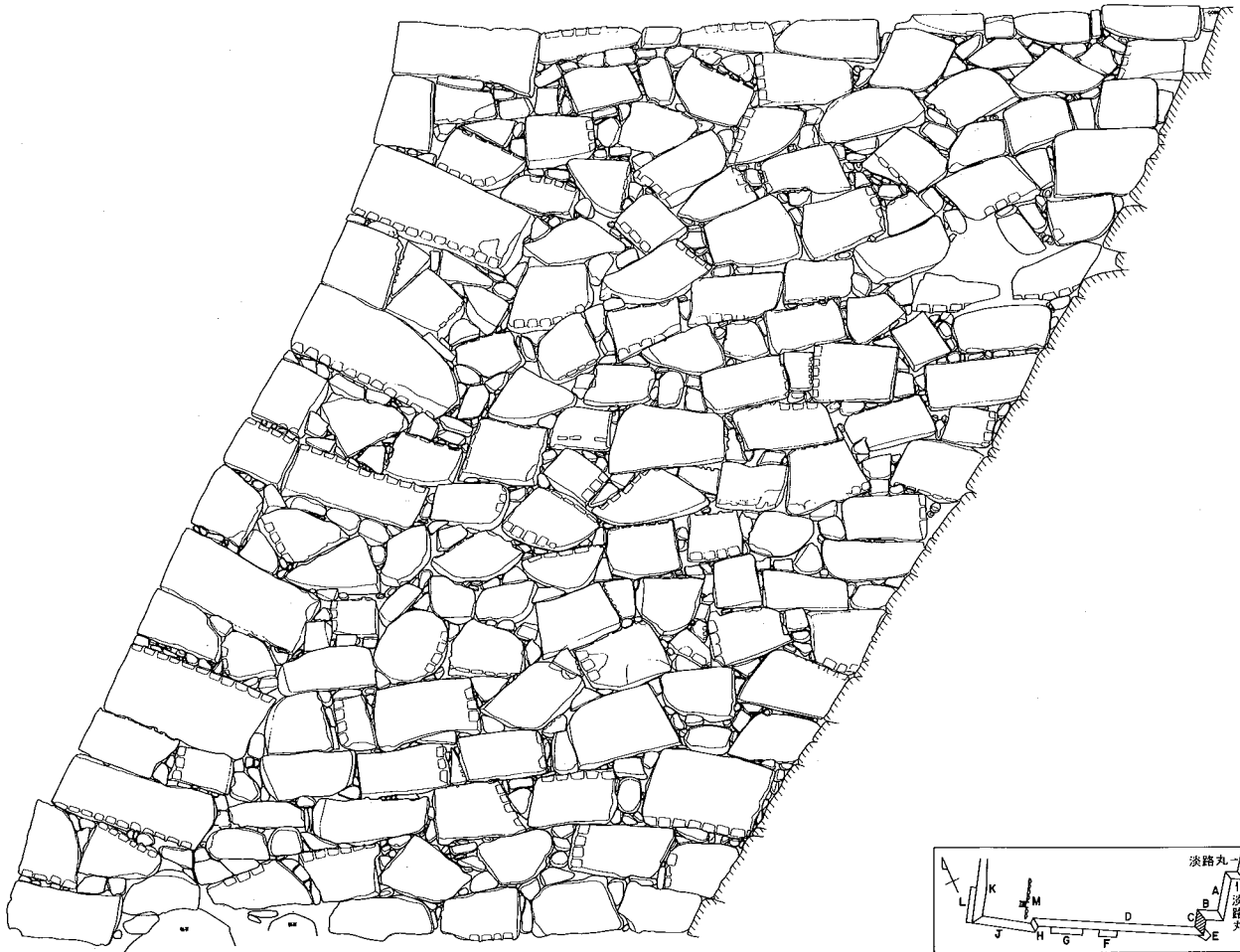
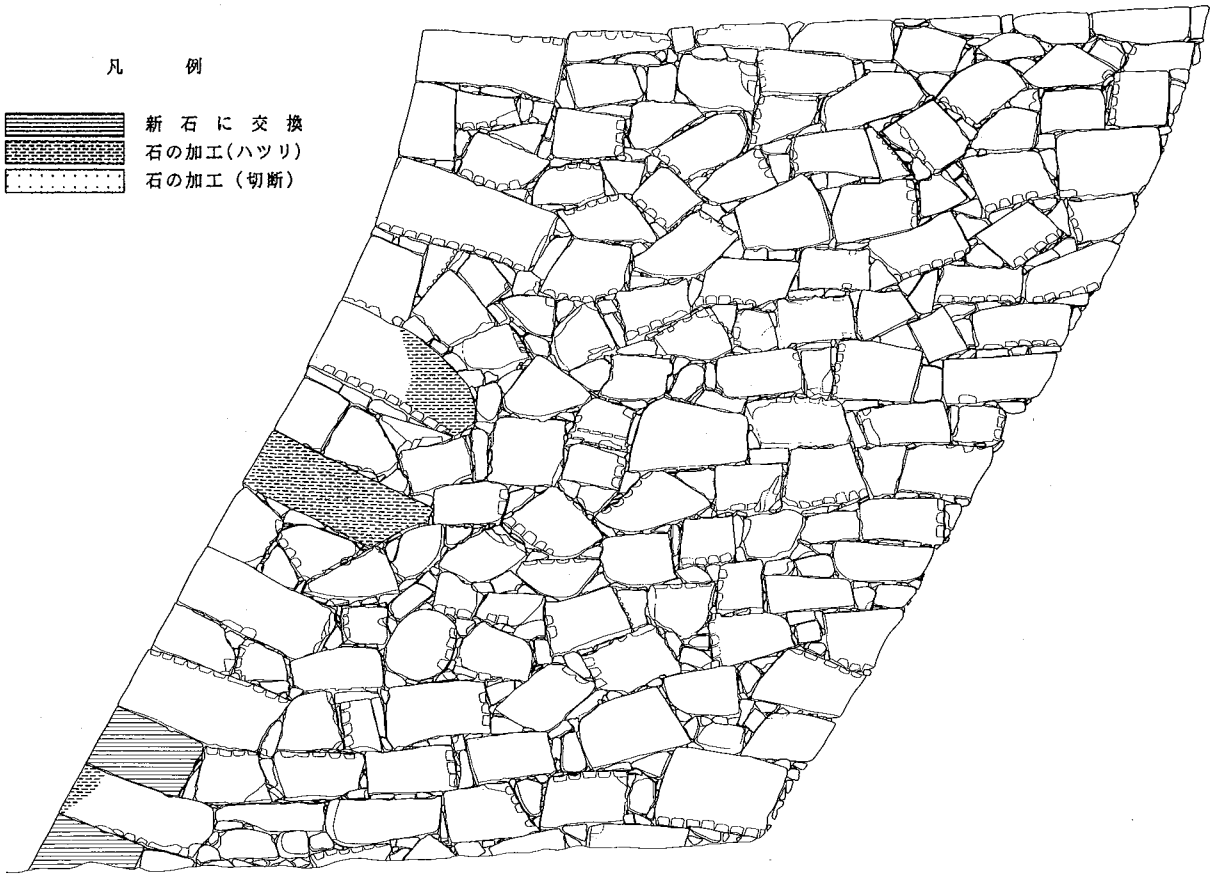


Fig. V - II 盛岡城跡石垣立面図(B面)上・修復後/下・修復前

凡 例

-  新石に交換
-  石の加工(ハツリ)
-  石の加工(切断)



1 : 100  
0 1 2 3 4m

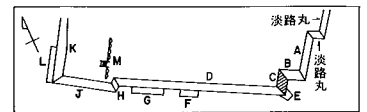
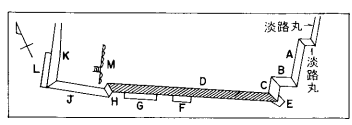
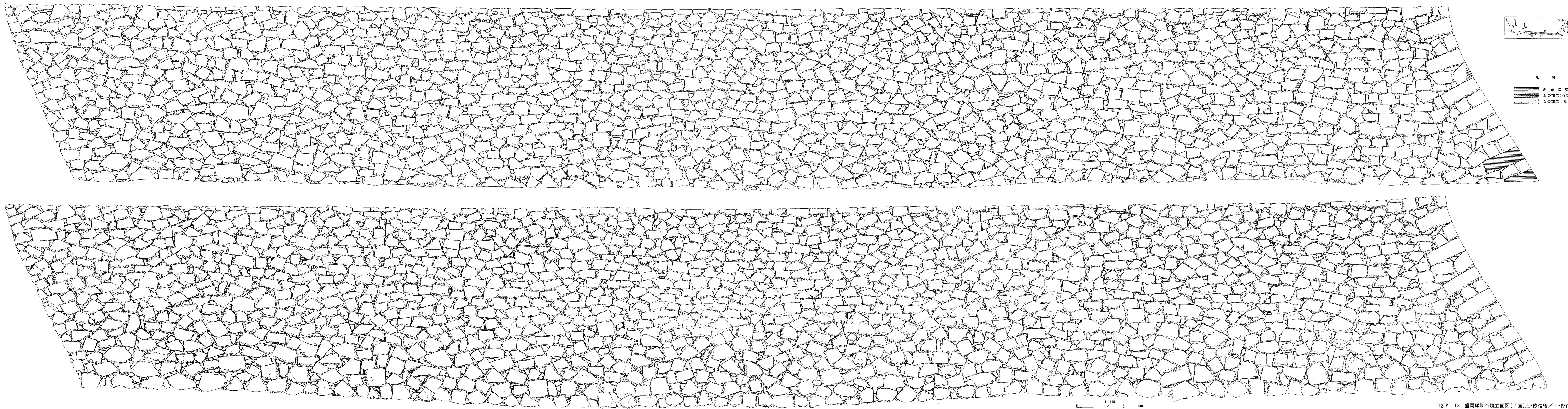


Fig. V - 12 盛岡城跡石垣立面図(C面)上・修復後/下・修復前



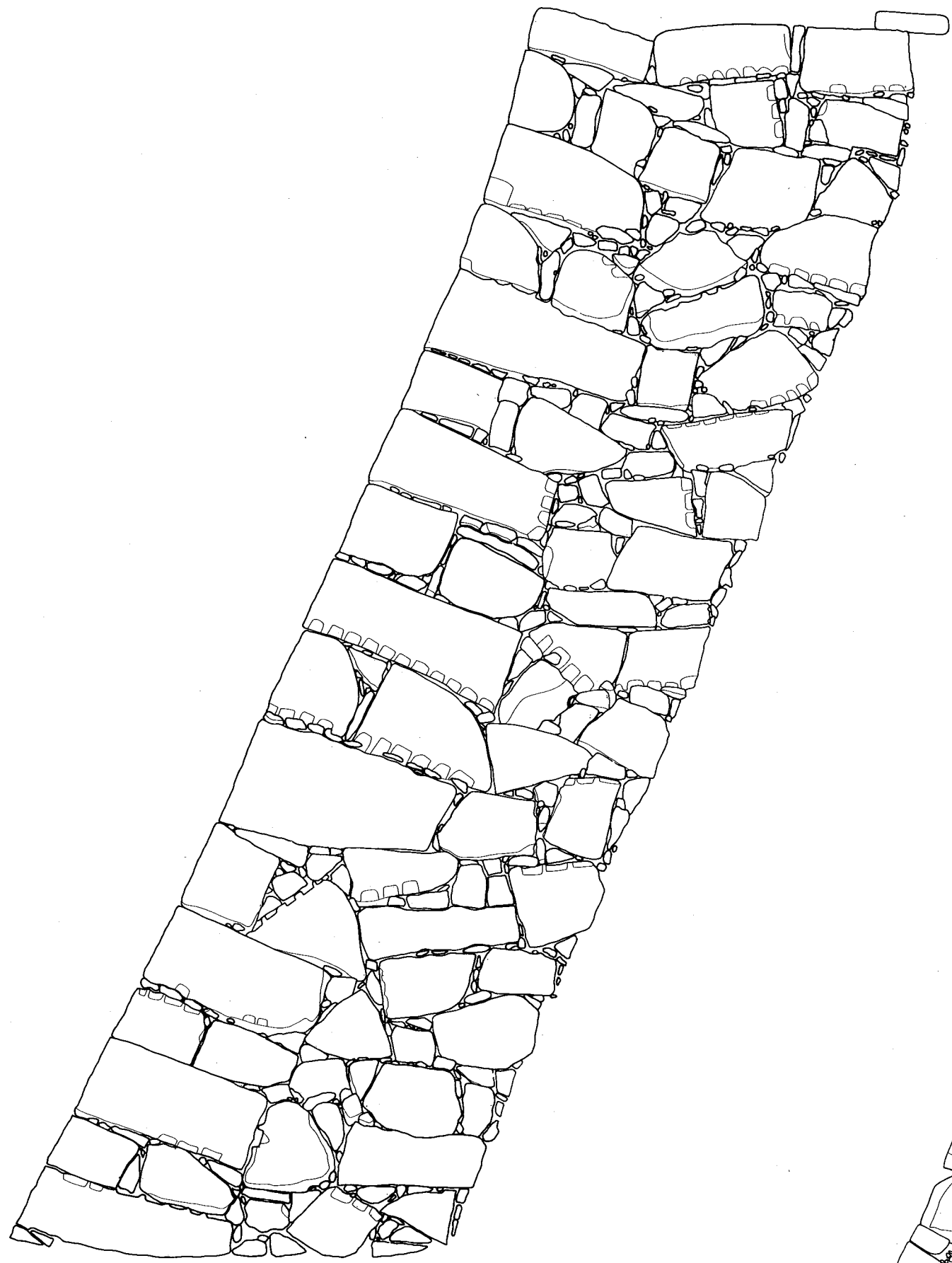


凡 例

- 新石に交換
- 石の加工(ハツリ)
- 石の加工(切斷)

1:100  
0 1 2 3 4m

Fig. V-13 盛岡城跡石垣立面図(D面)上・修復後/下・修復前



0 1 2 3 4m  
1:50

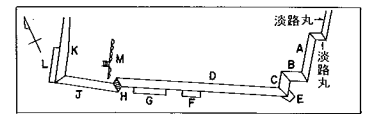
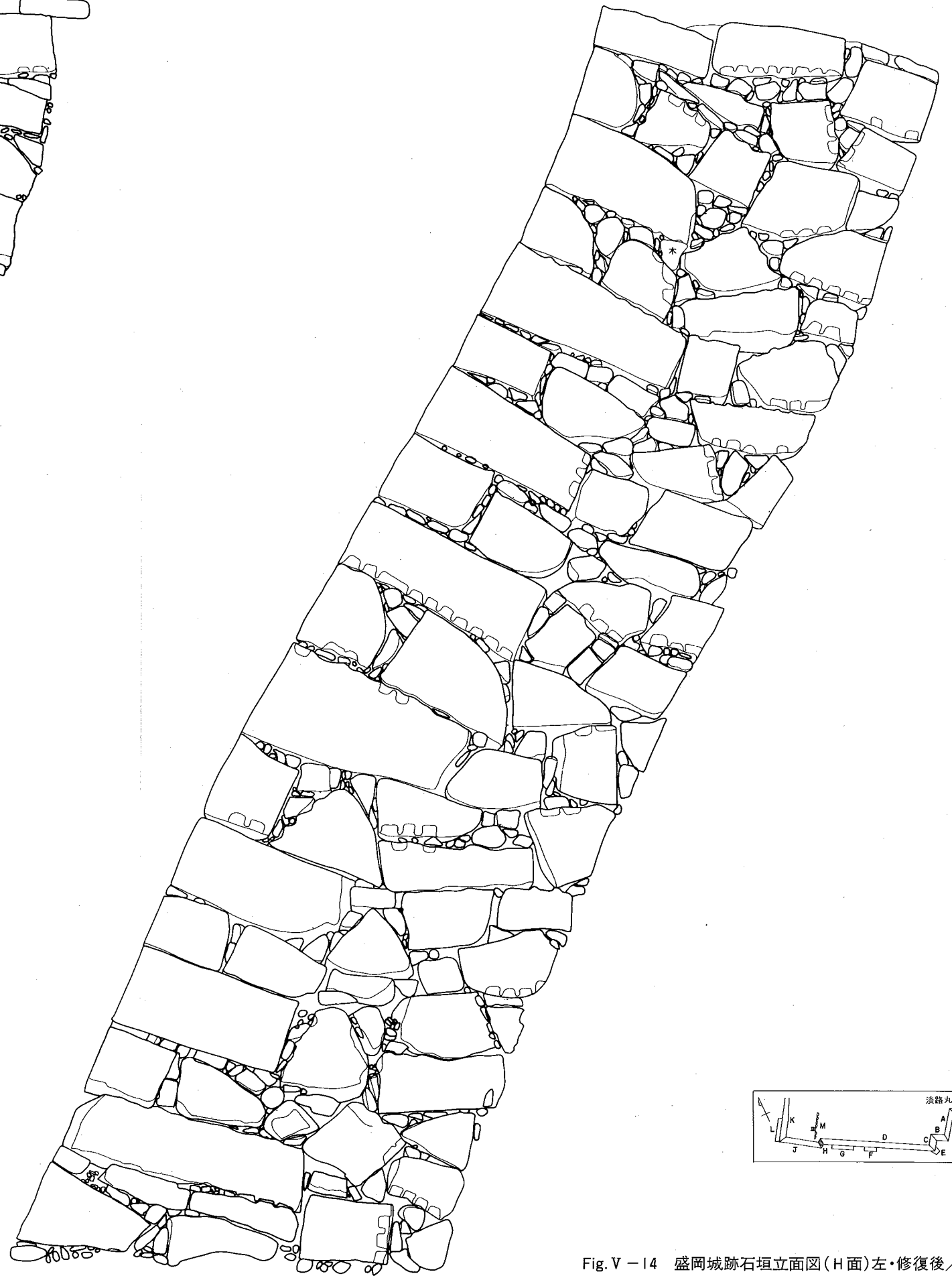
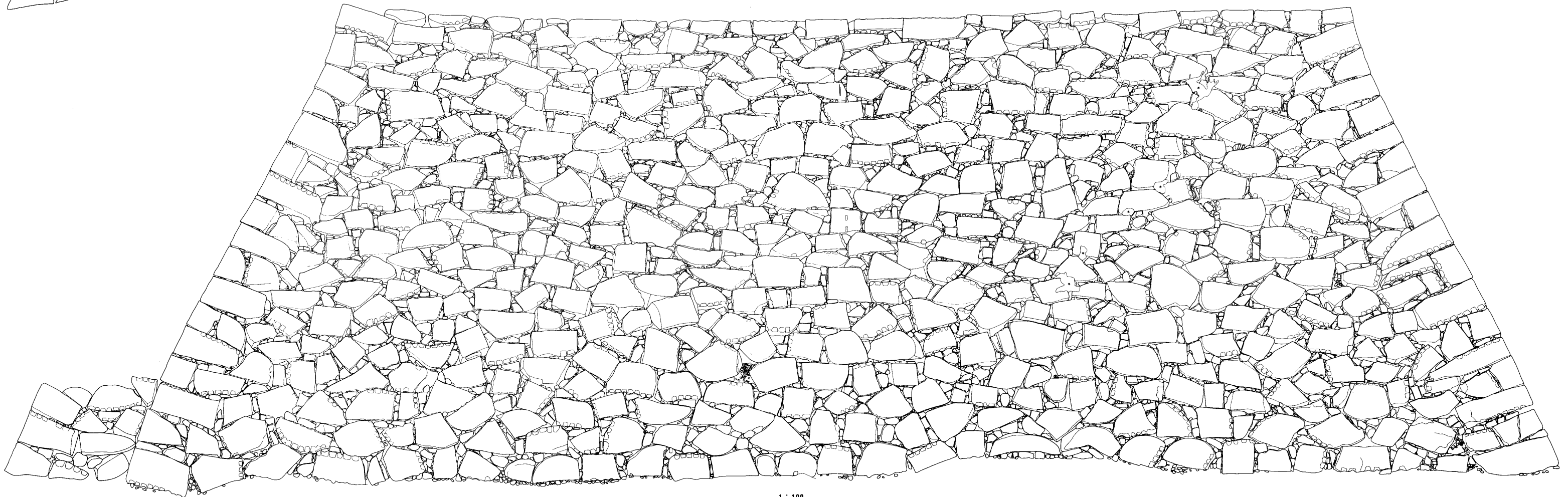
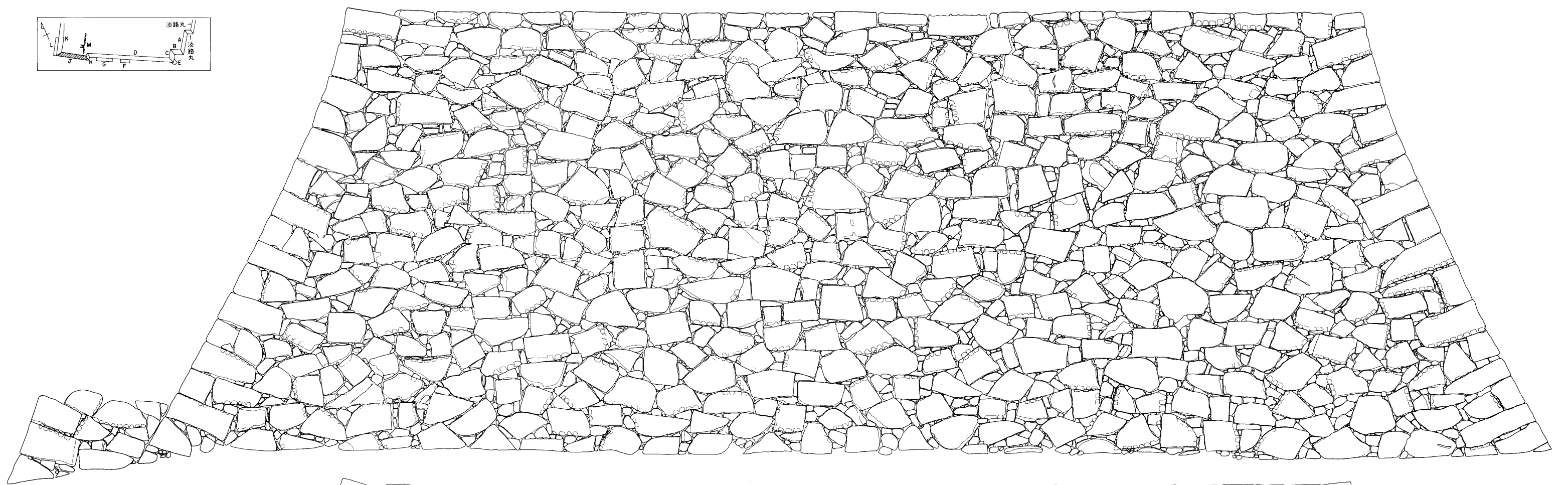
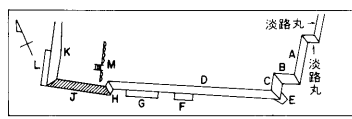


Fig. V - 14 盛岡城跡石垣立面図(H面)左・修復後/右・修復前

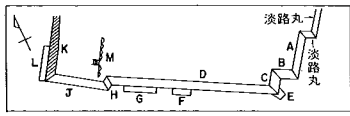






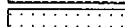
1 : 100  
0 1 2 3 4m

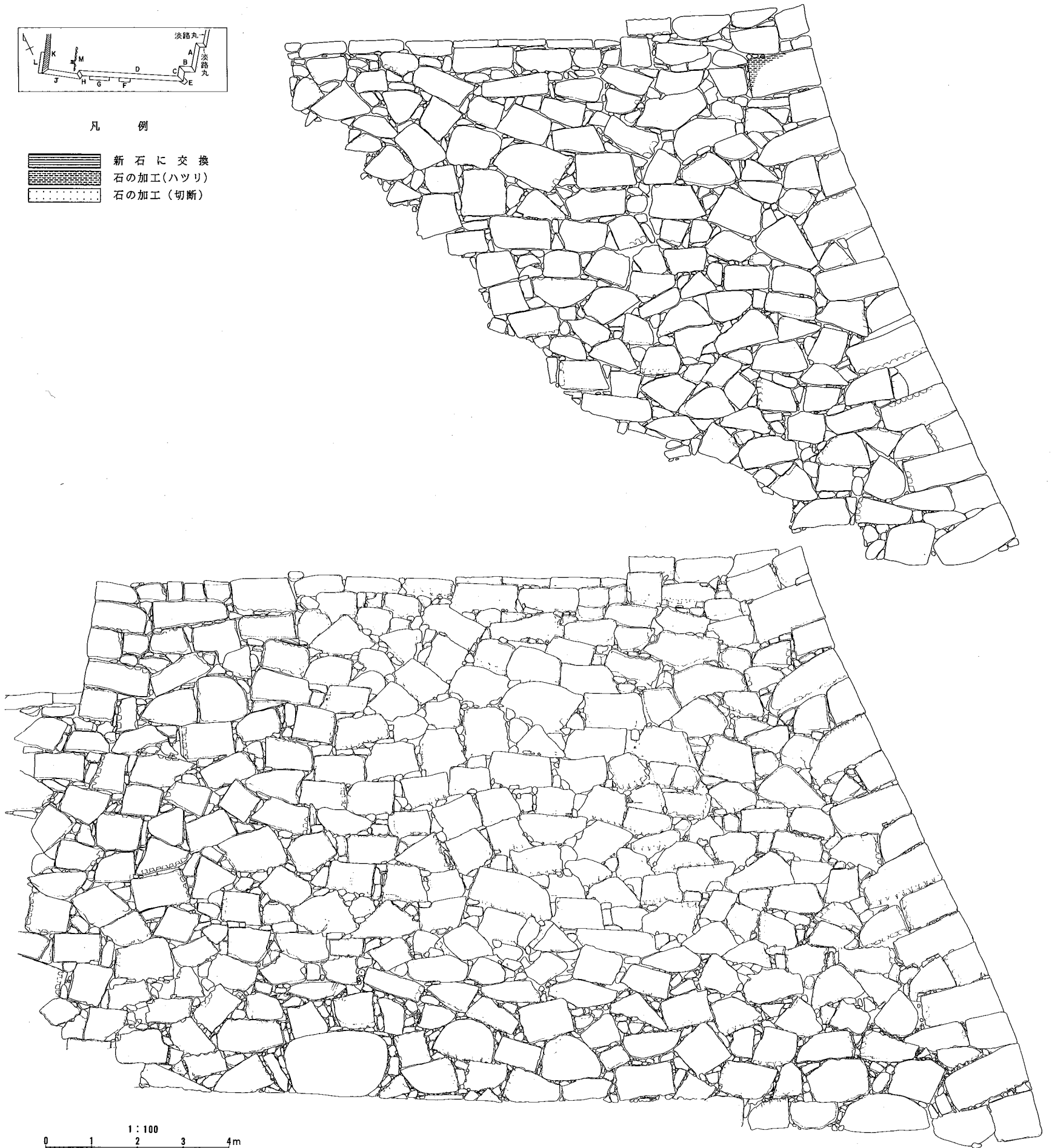
Fig. V - 15 盛岡城跡石垣立面図(J面)上・修復後/下・修復前





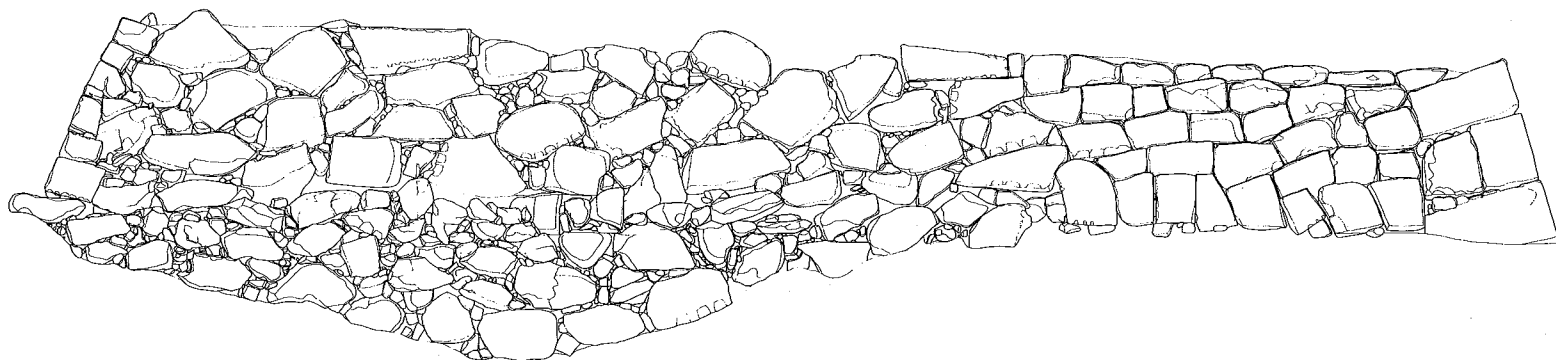
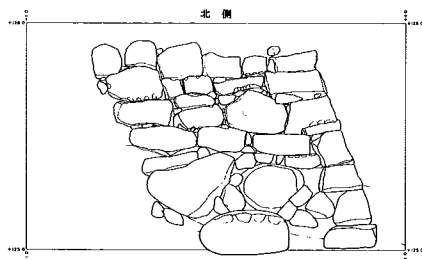
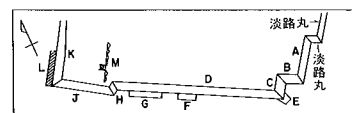
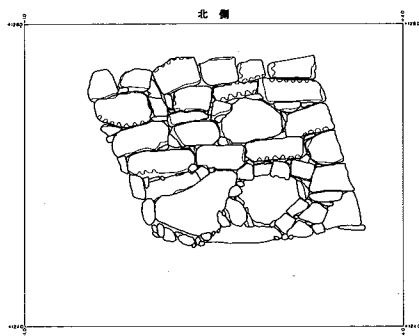
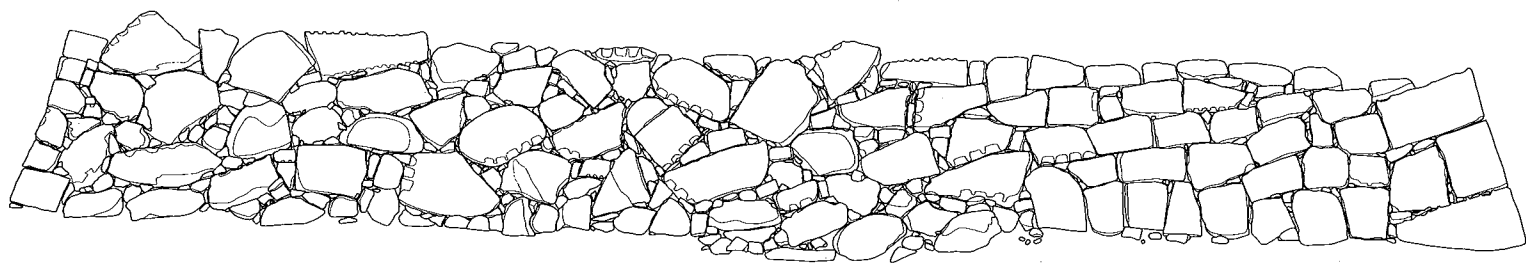
凡 例

-  新石に交換
-  石の加工(ハツリ)
-  石の加工(切断)



1 : 100  
0 1 2 3 4m

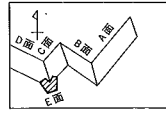
Fig.V-16 盛岡城跡石垣立面図(K面)上・修復後/下・修復前



1 : 100  
0 1 2 3 4m

Fig. V - 17 盛岡城跡石垣立面図(L面)上・修復後/下・修復前

盛岡城跡石垣修復前現況立面圖(E面)



盛岡城跡石垣修復前現況立面圖(F面)

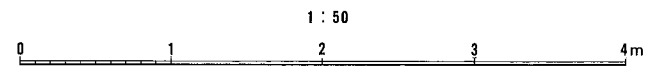
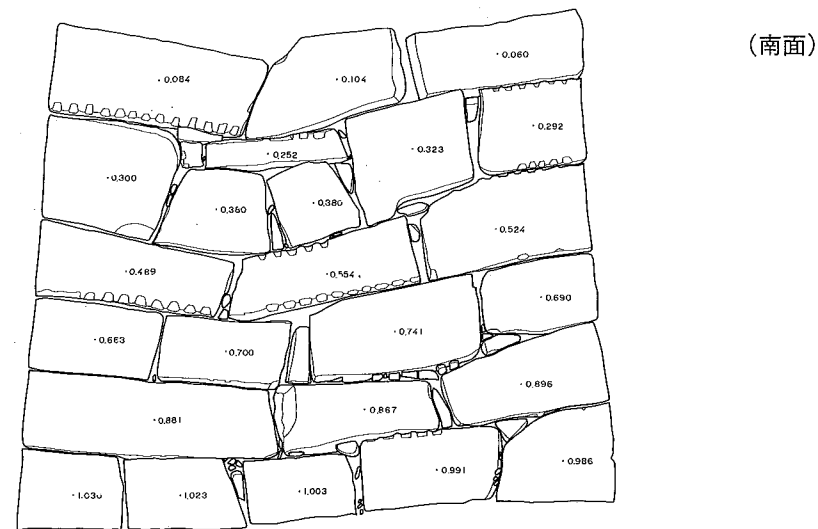
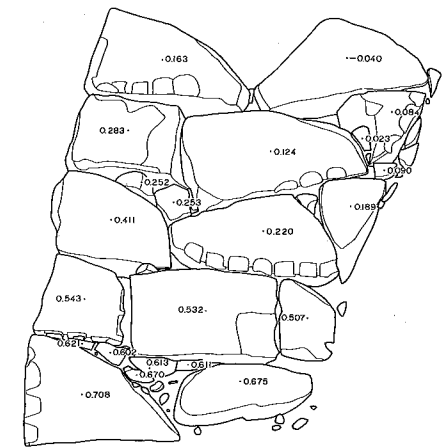
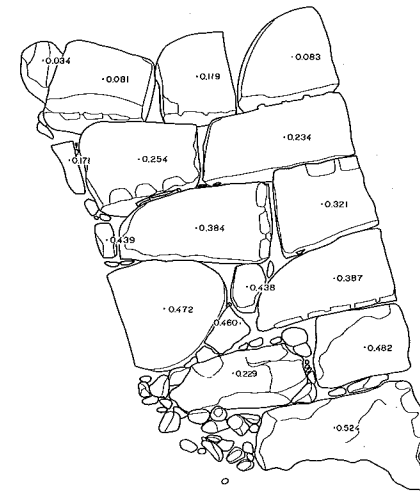
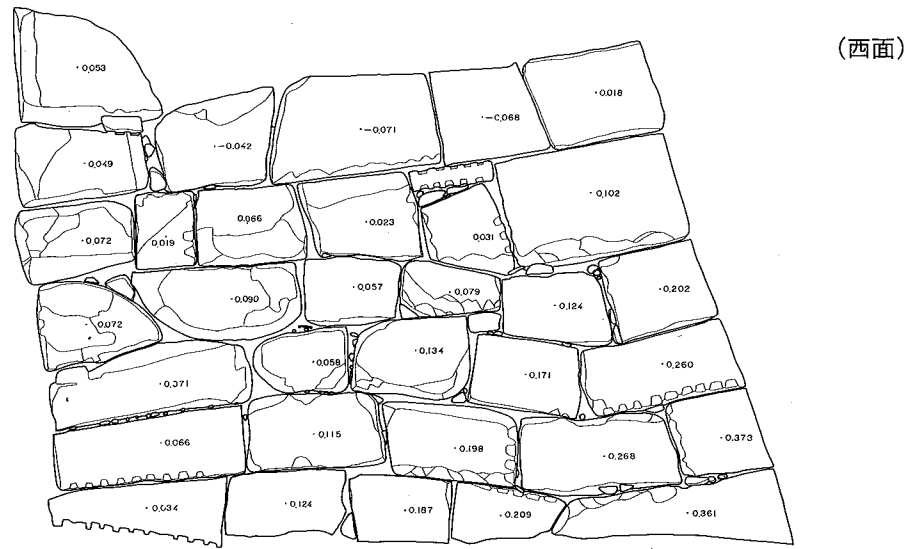
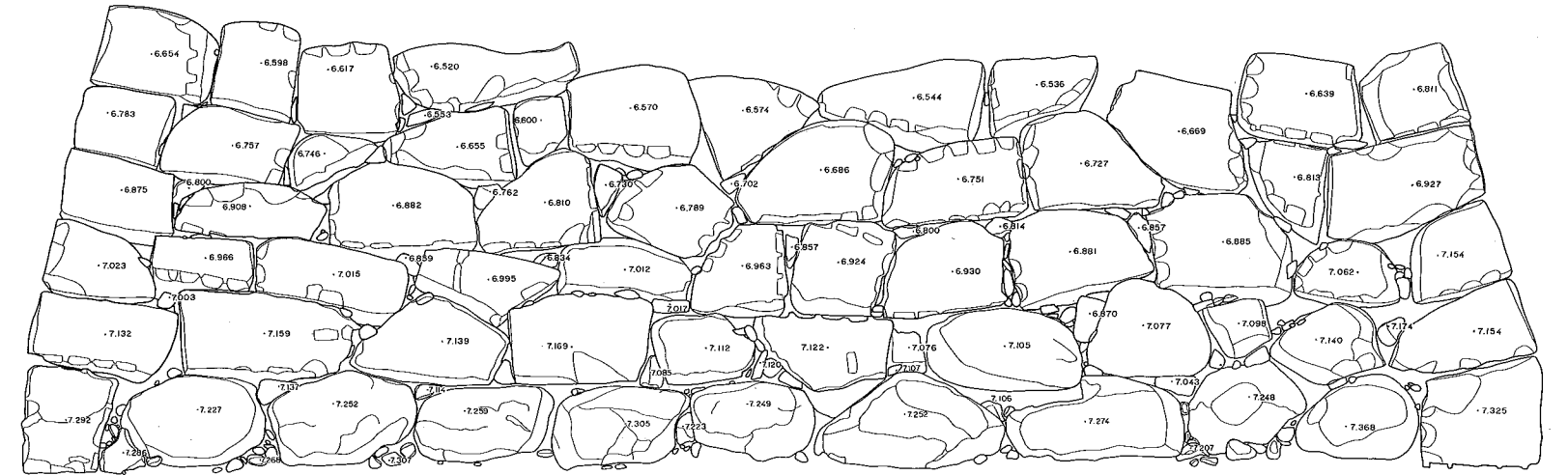
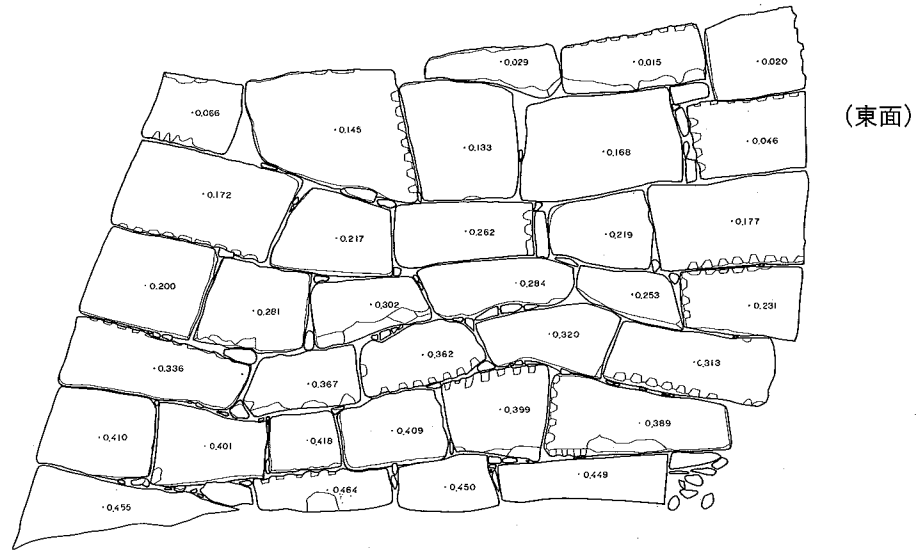
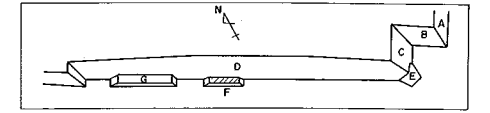
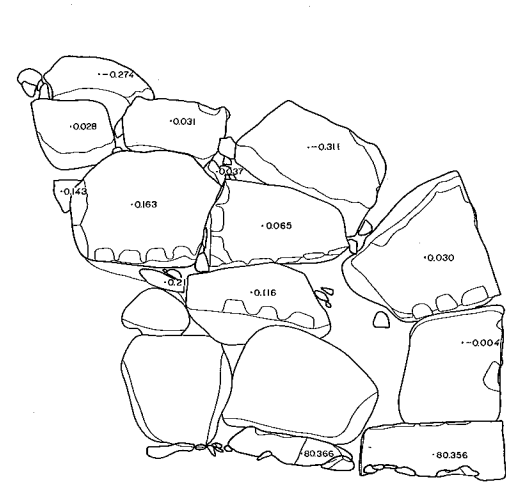
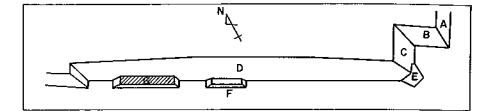
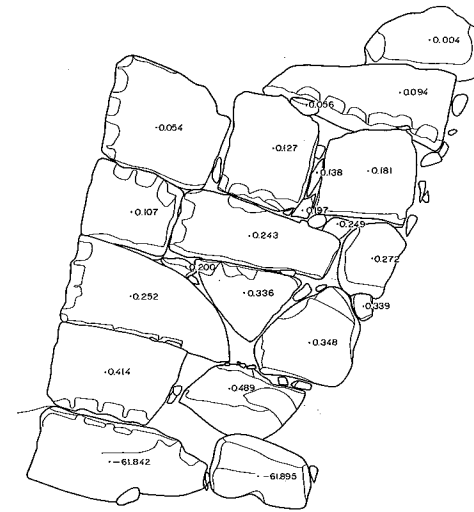


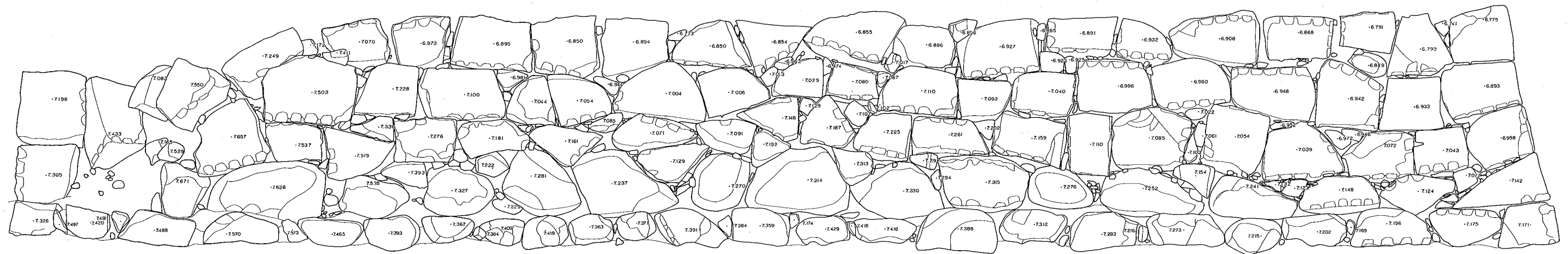
Fig. V-18 盛岡城跡石垣立面圖(E面・F面)撤去前



(西面)



(東面)



(南面)

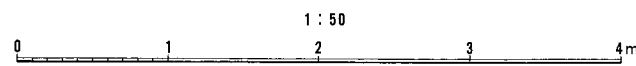


Fig. V - 19 盛岡城跡石垣立面图(G面)撤去前

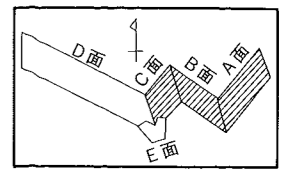
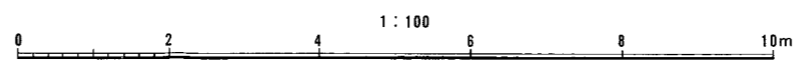
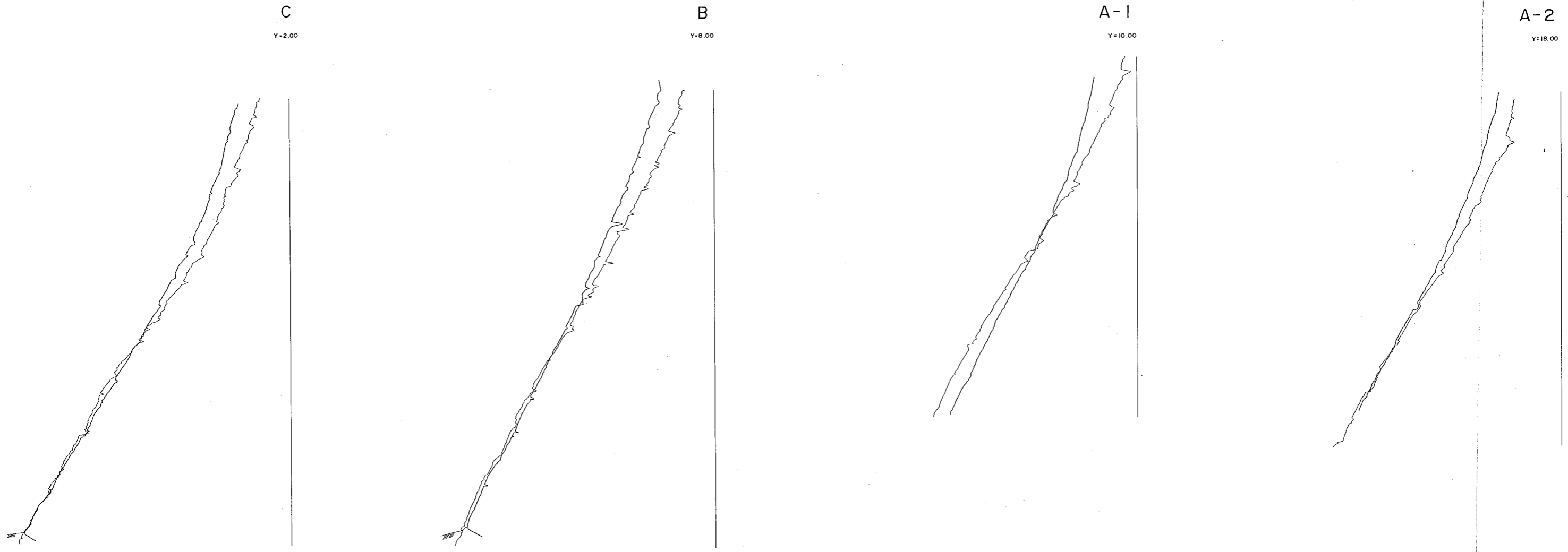


Fig. V - 20 盛岡城跡石垣横断面図(ABC面)修復前(細線)・後(太線)



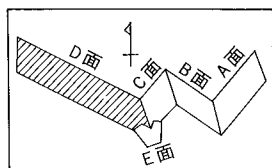
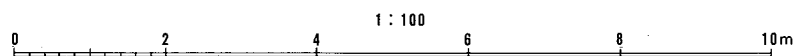
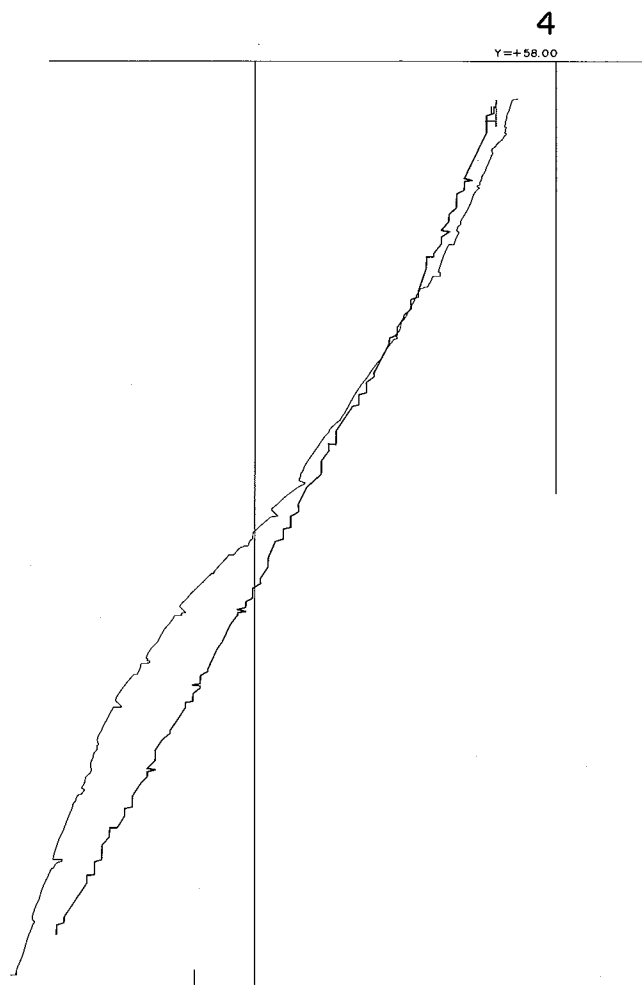
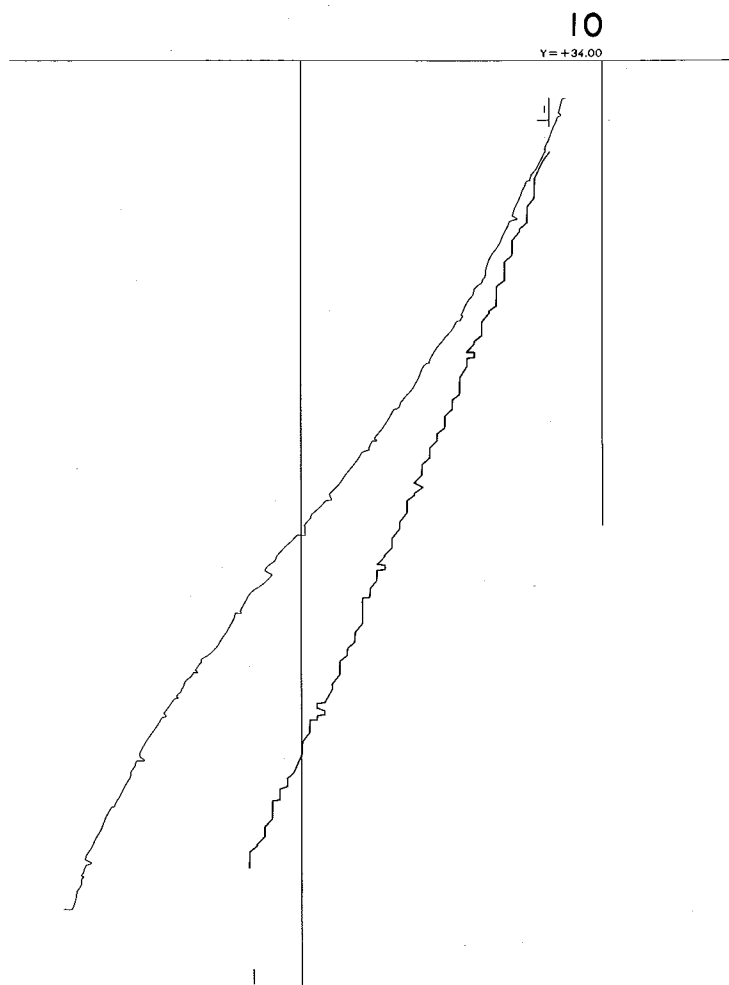
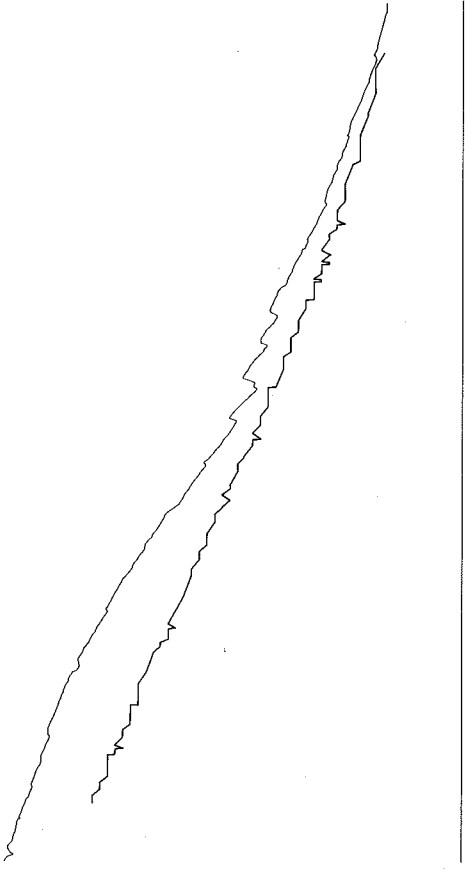


Fig. V - 21 盛岡城跡石垣横断図(D面)修復前(細線)・後(太線)

J-8  
J=0.00



J-4  
J=+16.00

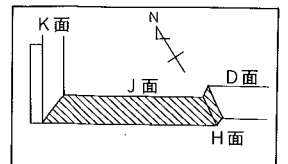
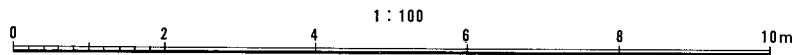
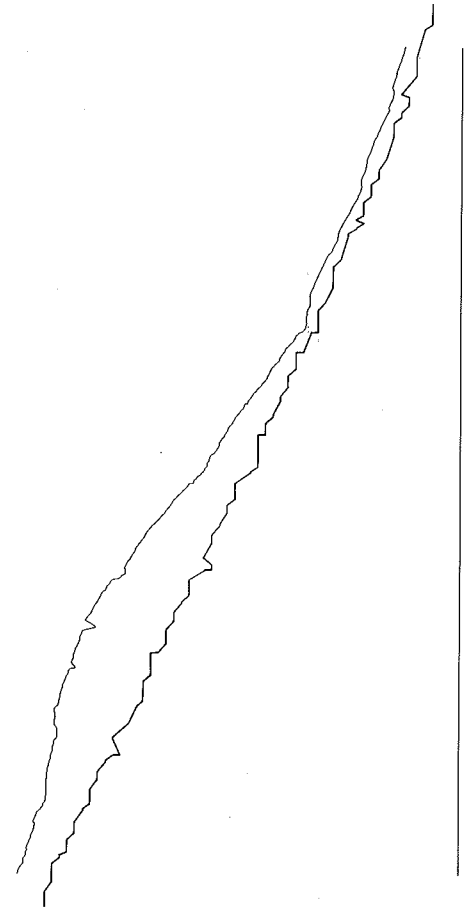


Fig. V - 22 盛岡城跡石垣横断面図(H、J面)修復前(細線)・後(太線)

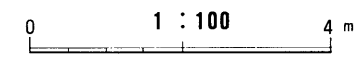
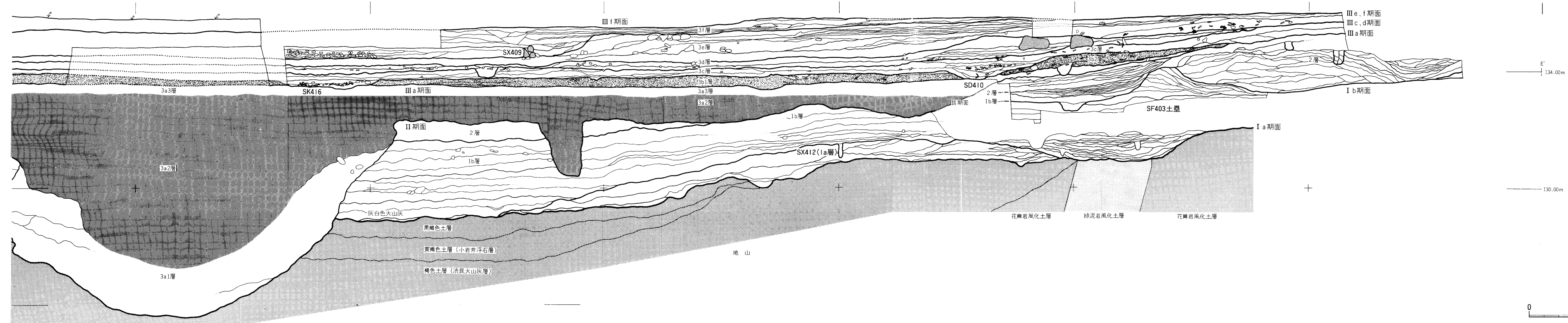
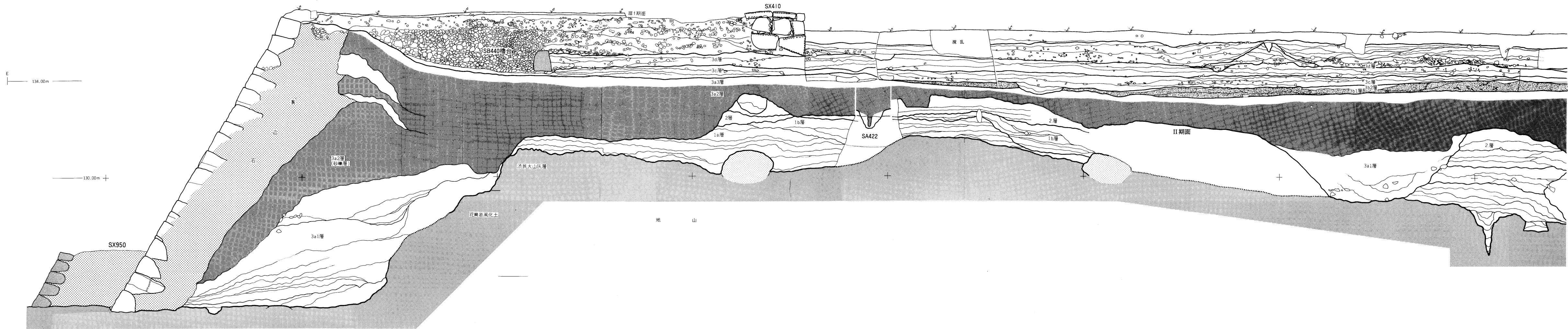


Fig. IV - 64 腰曲輪土層断面图