

写 真 图 版

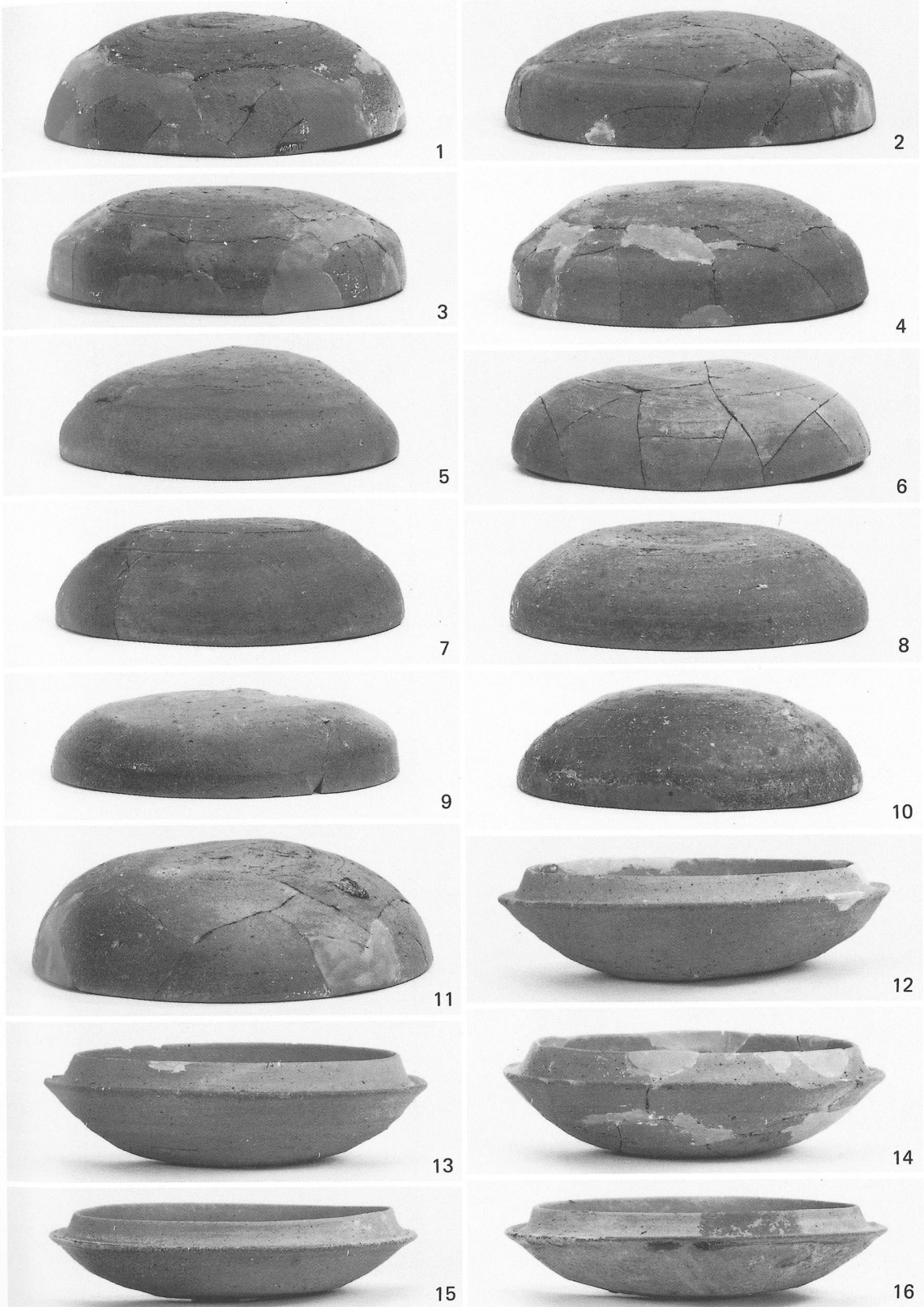


- 1 石室の遺存および遺物出土状況(南より)
- 2 遺物出土状況(南より)

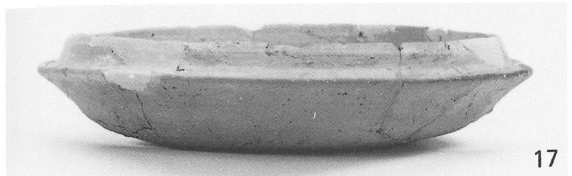


1 遺物出土状況(東より)

2 遺物出土状況(南より)



石室内出土土器



石室内出土土器

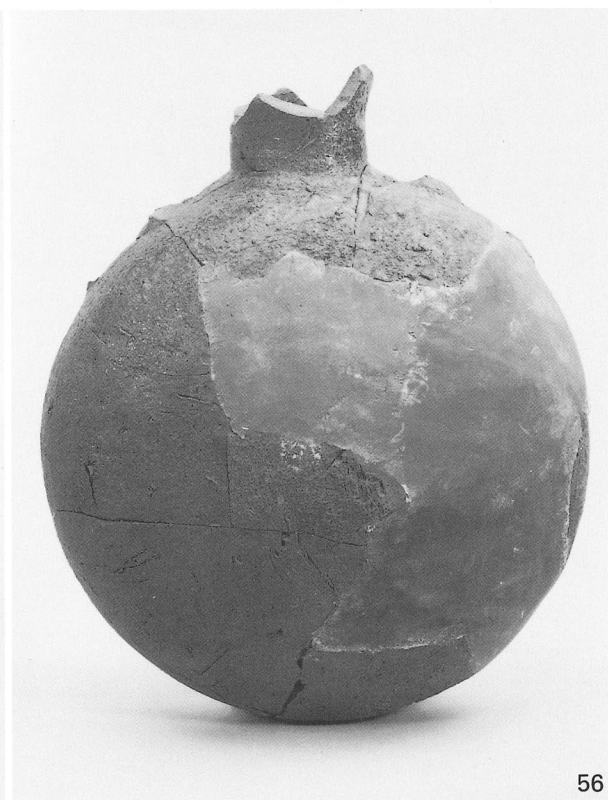


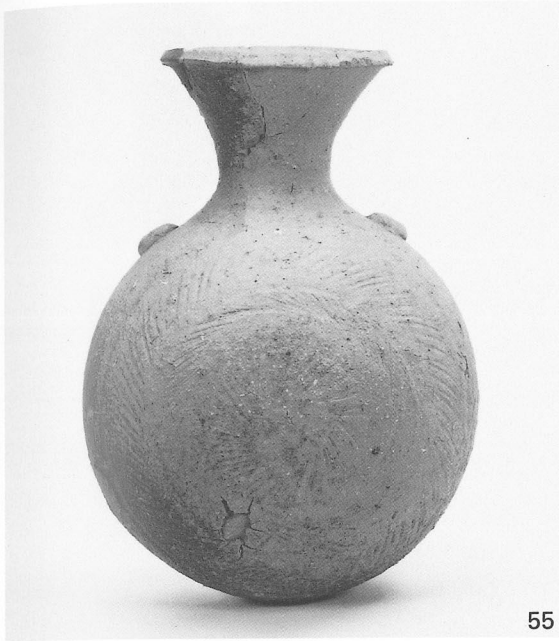
石室内出土土器



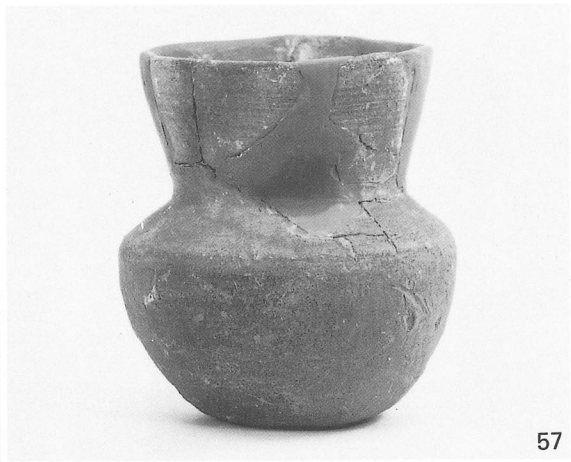


石室内出土土器





55



57



60



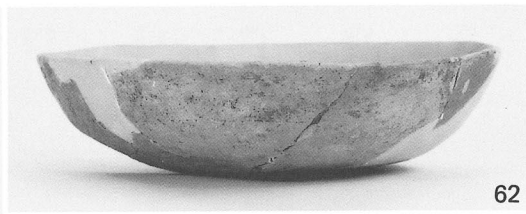
54



53



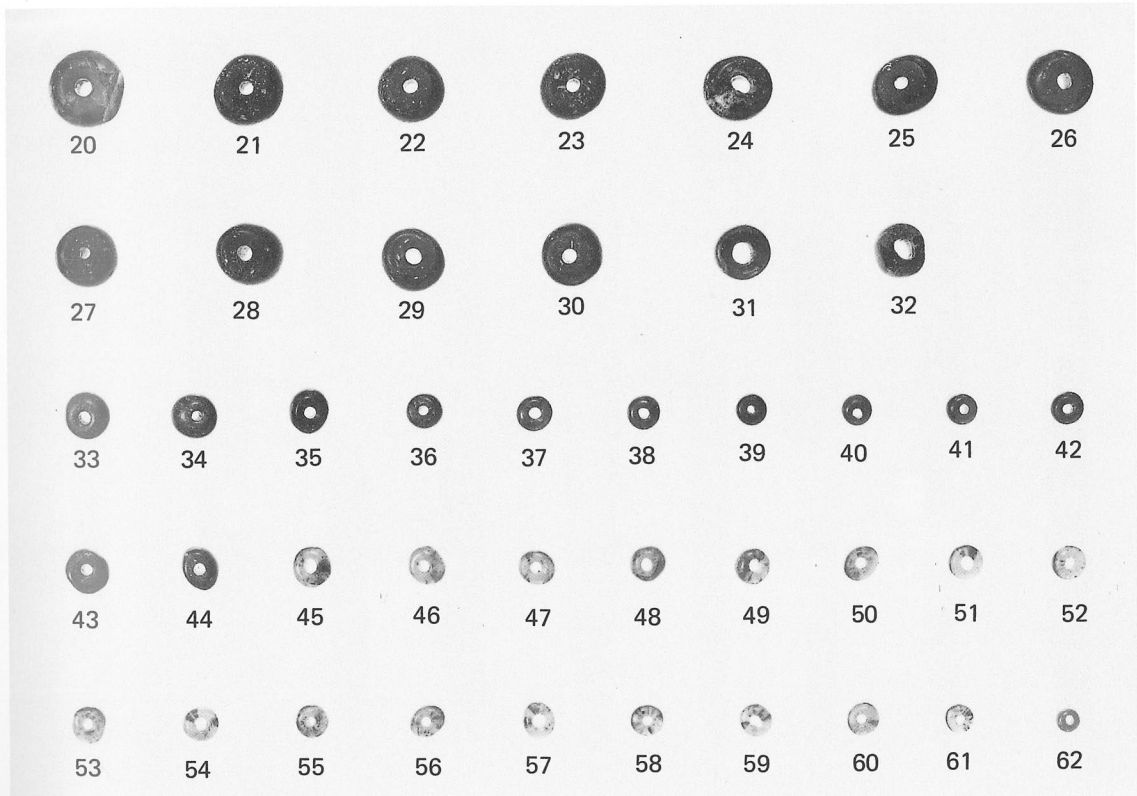
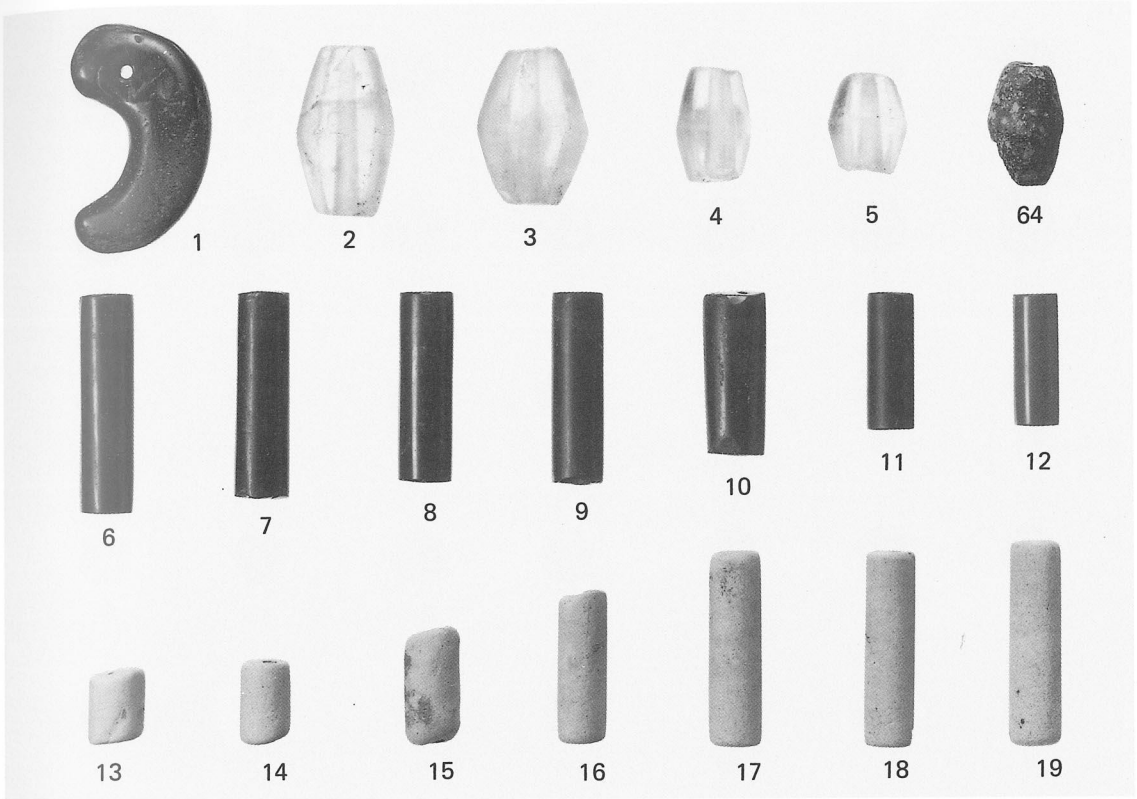
61



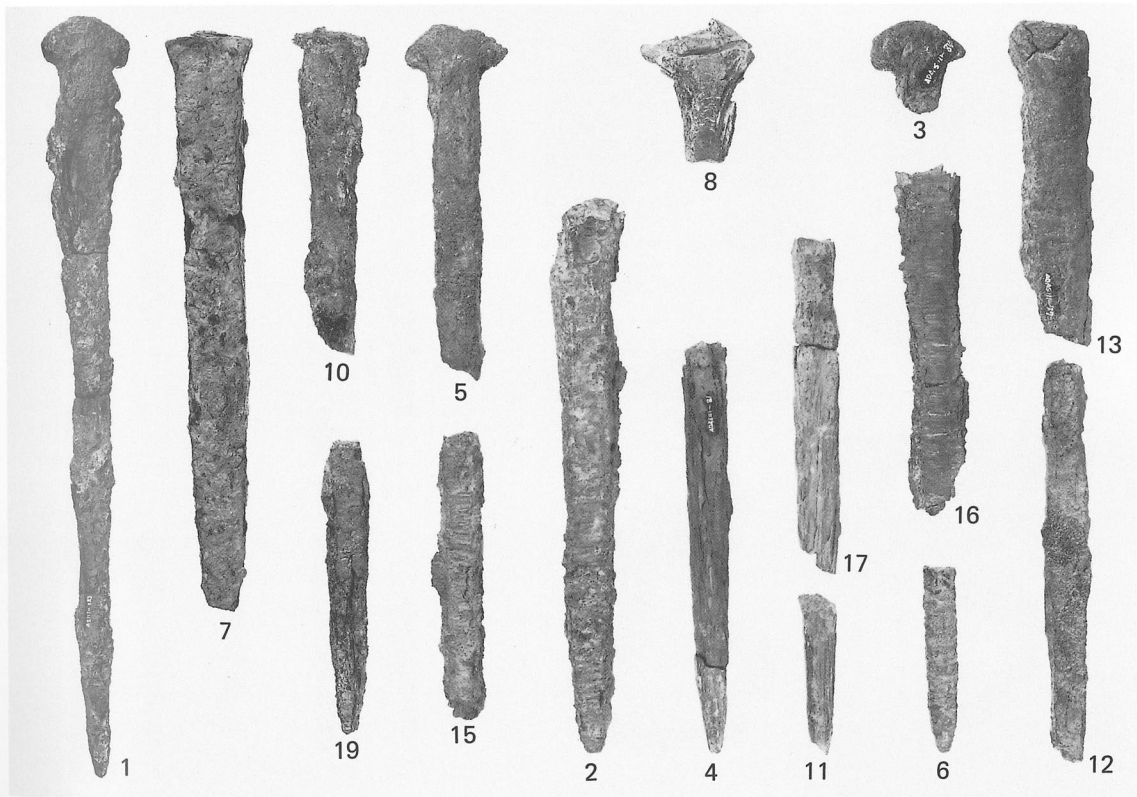
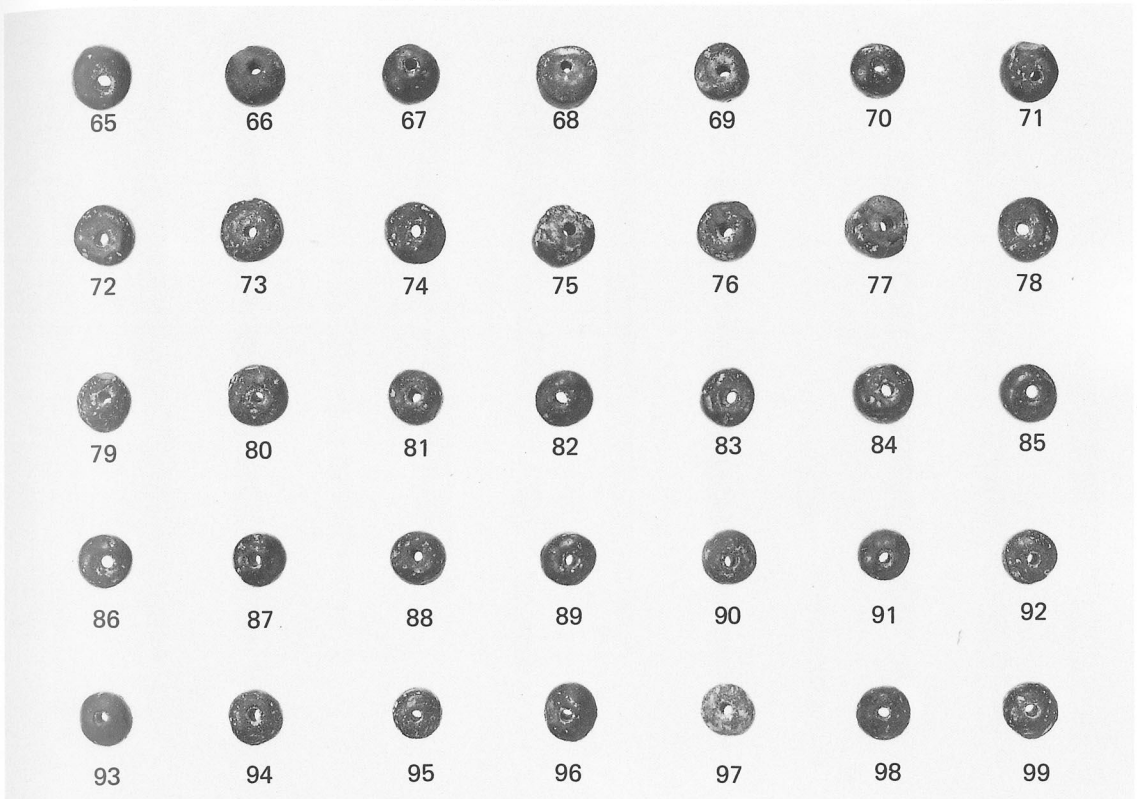
62



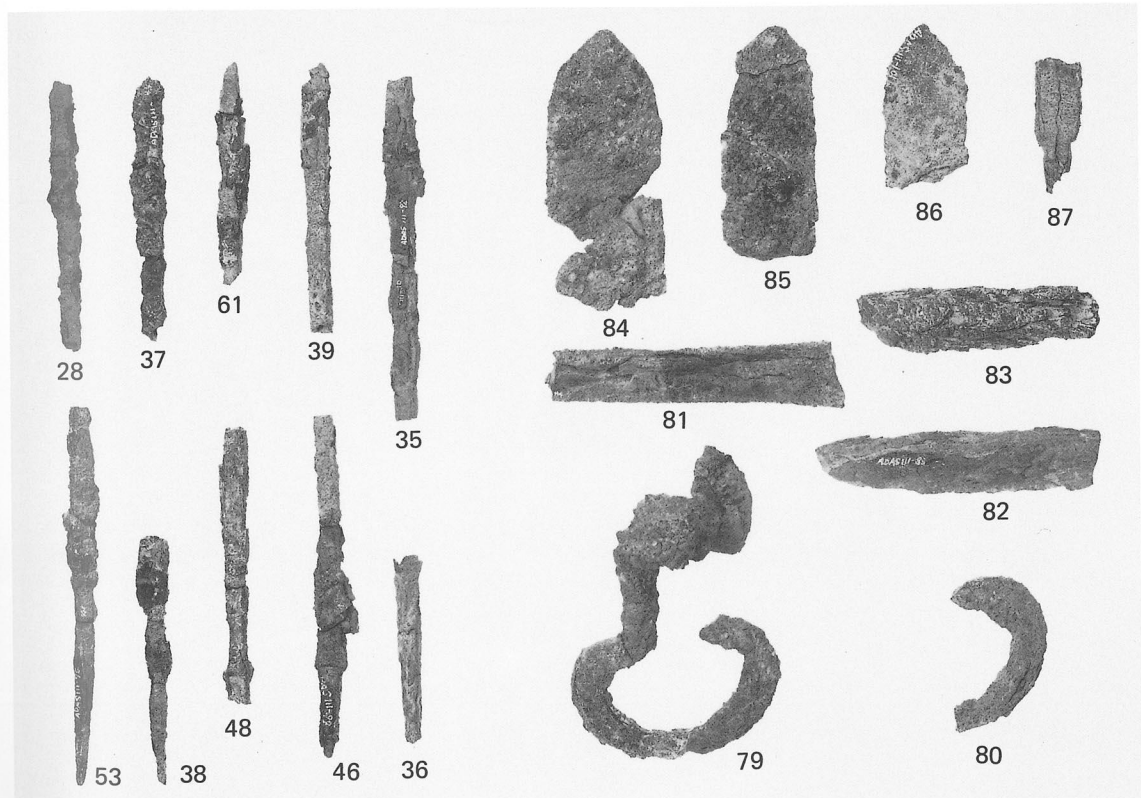
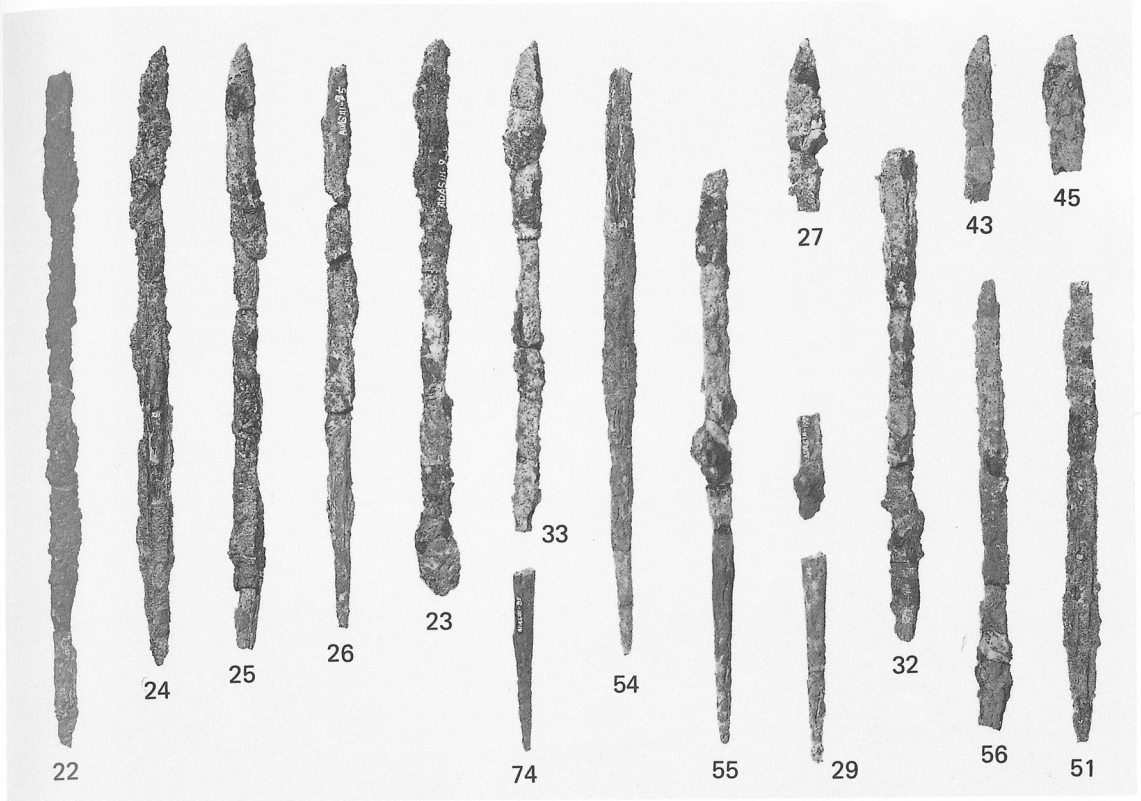
63



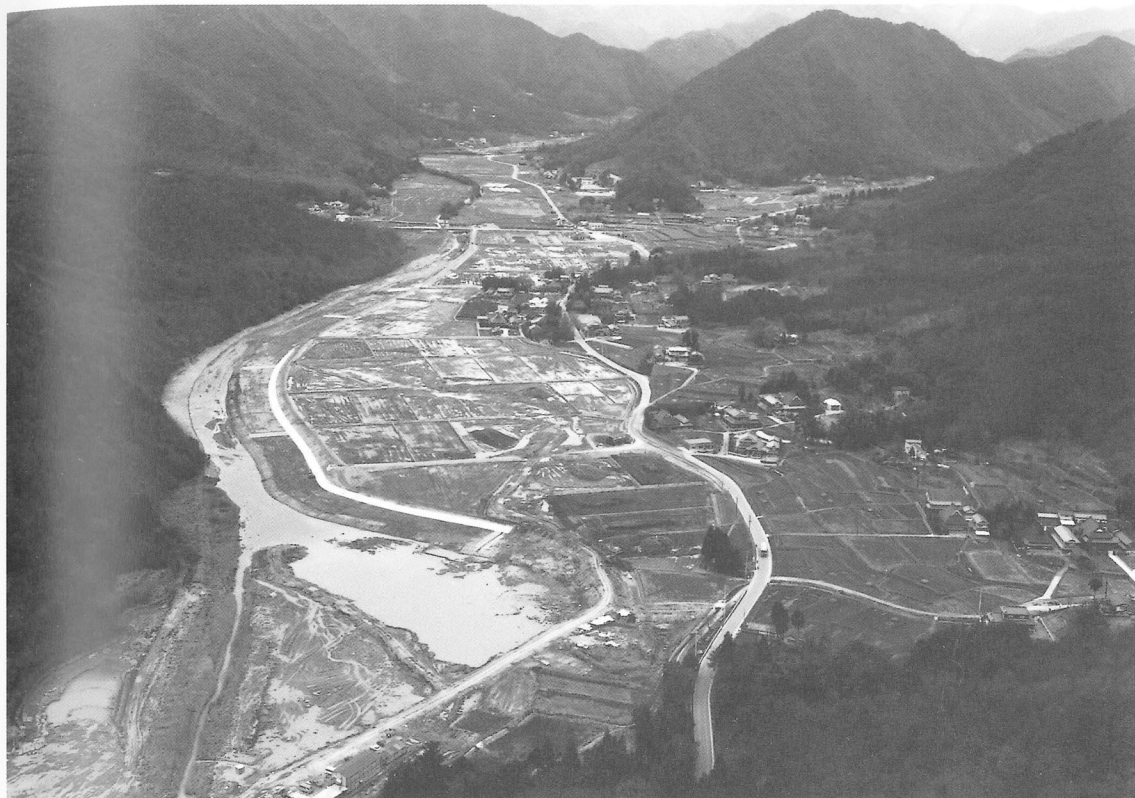
1 石室内出土玉類
 2 石室内出土小玉



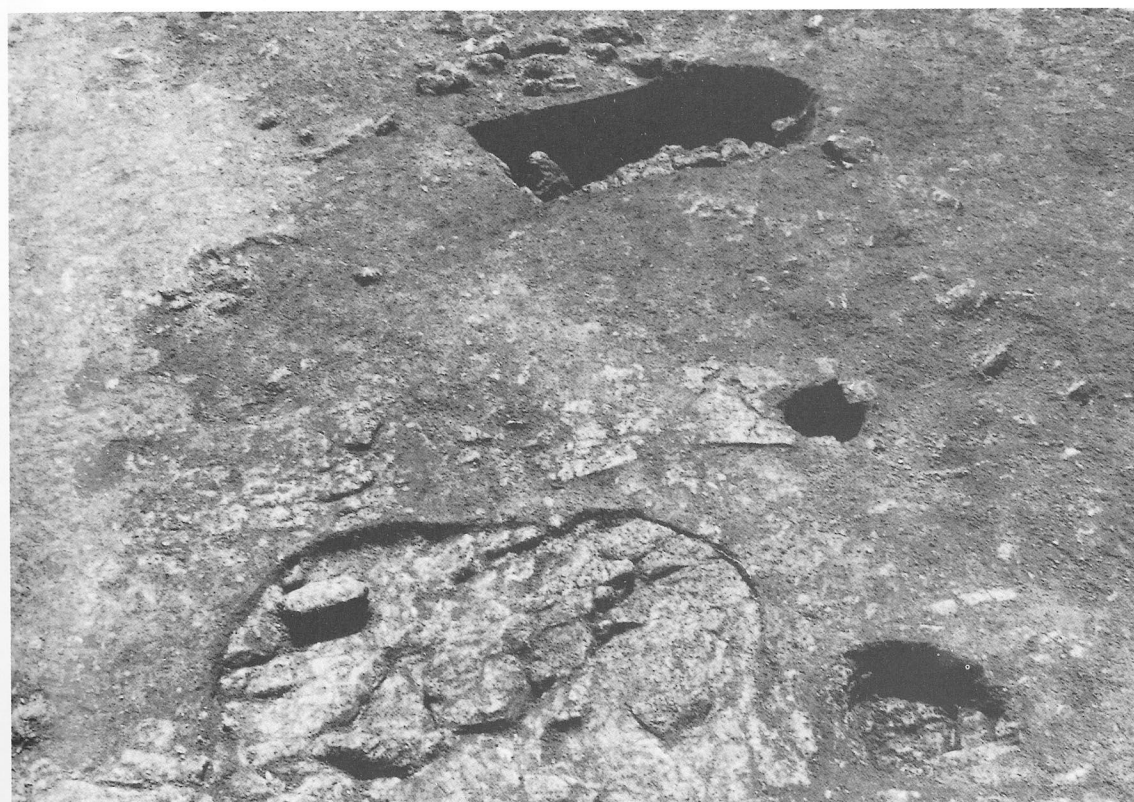
1 石室内出土土玉
 2 石室内出土鉄釘



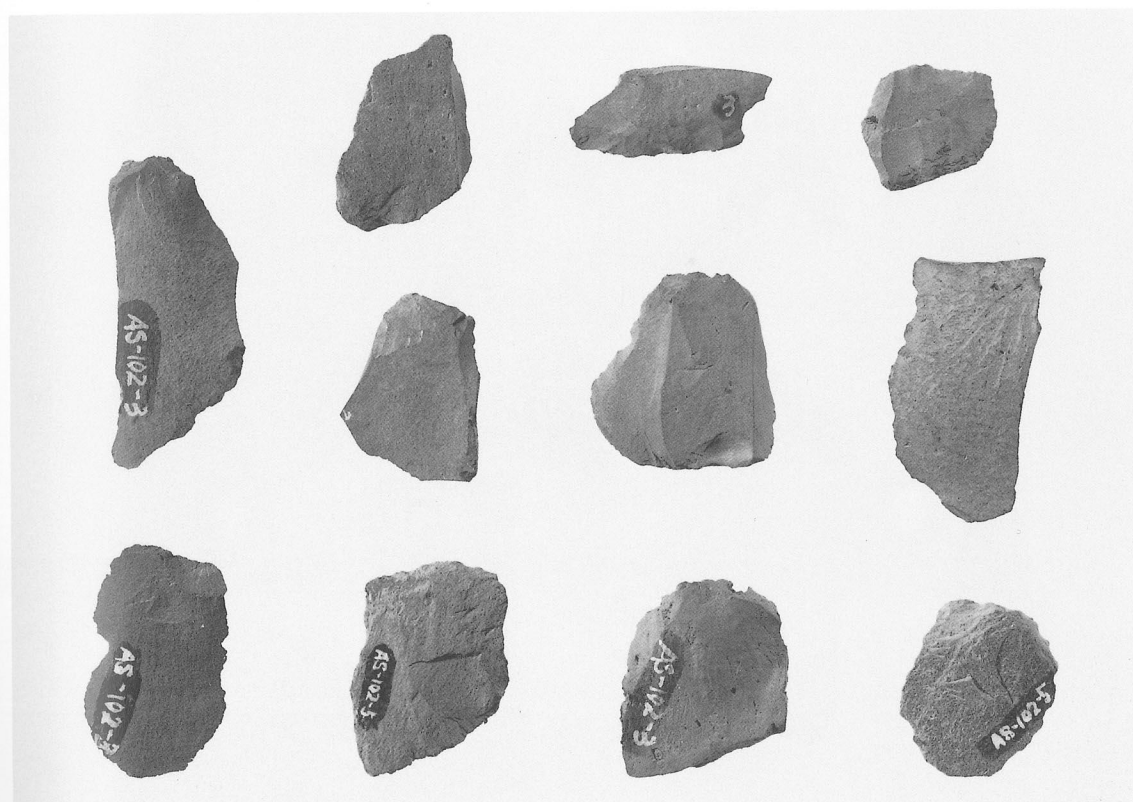
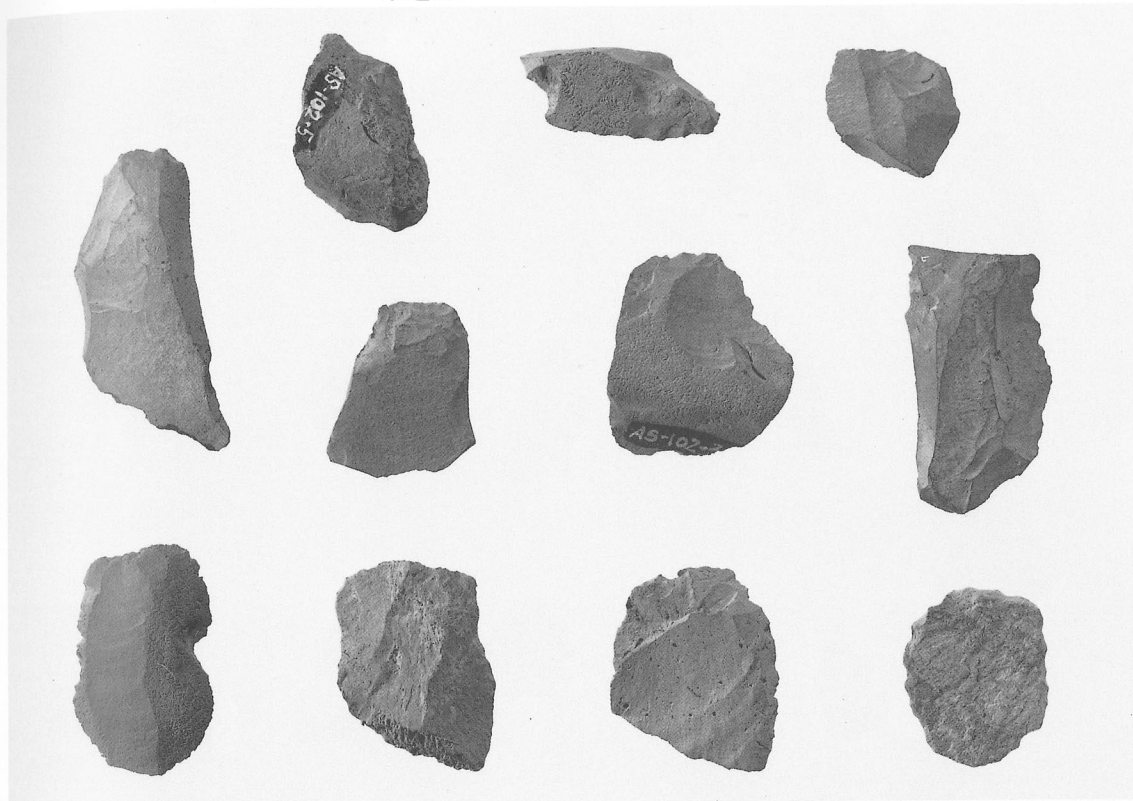
1 石室内出土鉄鏃
 2 石室内出土鉄鏃・刀子・鞍金具



- 1 遺跡付近の景観(南より)
- 2 遺跡の現状(北より)



1 土層堆積状況(下青野館跡土壘断面)
2 焼土層・土壘



1 出土石器(1)
2 同上裏面



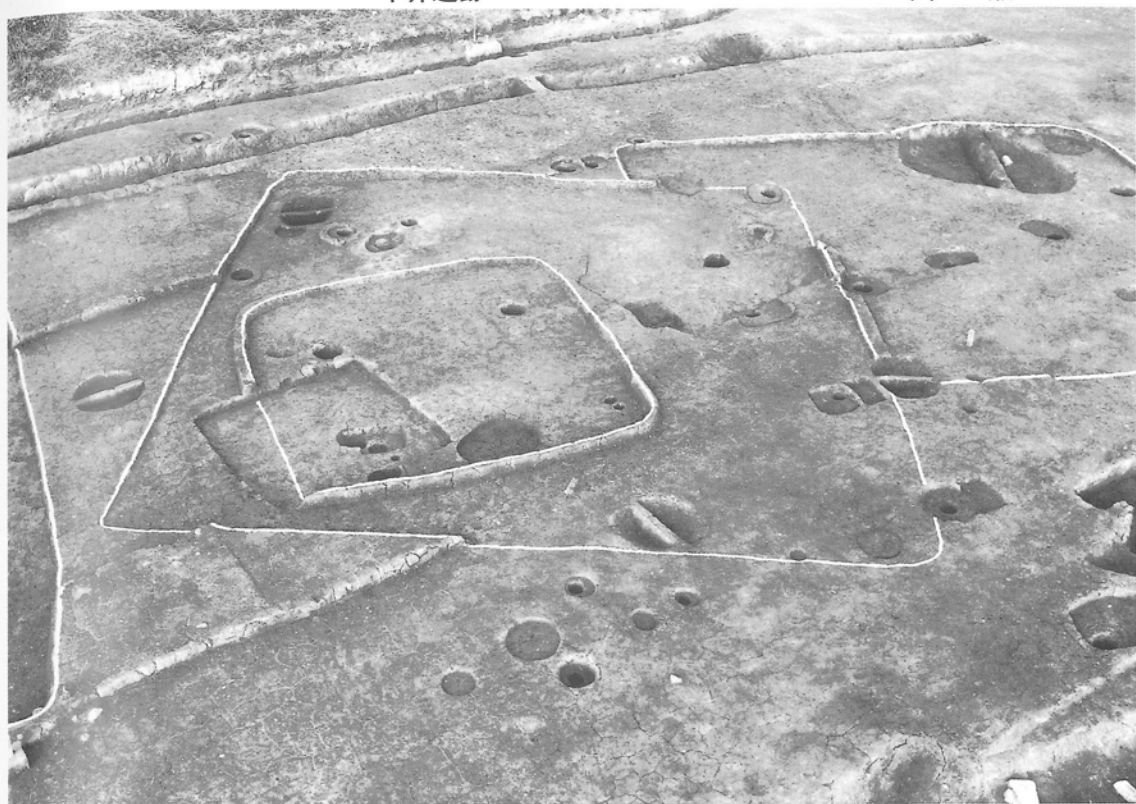
1 出土石器(2)
2 同上裏面



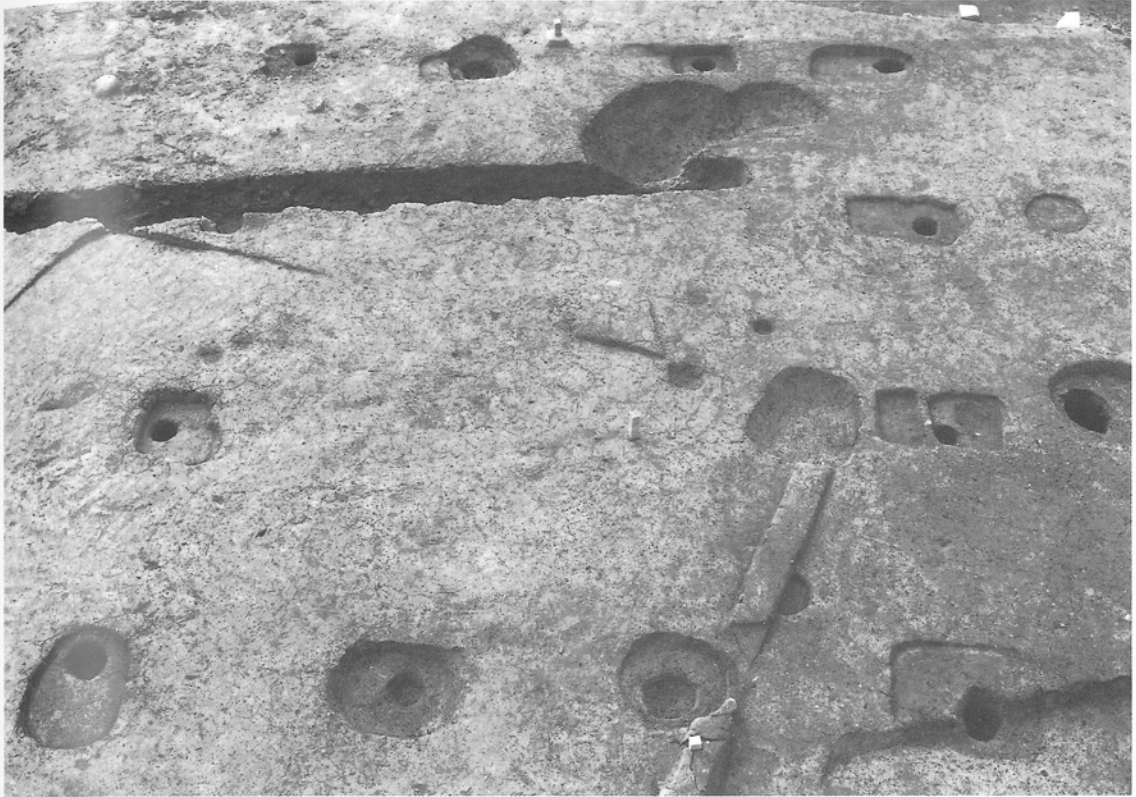
- 1 竪穴住居と掘立柱建物群(東より)
- 2 竪穴住居群(西より)



- 1 竪穴住居Ⅲ(北西より)
- 2 竪穴住居Ⅳ(西より)



- 1 竪穴住居Ⅱ・Ⅲ(南西より)
- 2 竪穴住居Ⅵ(南より)



1 掘立柱建物Ⅰ(北より)
2 掘立柱建物Ⅱ(北西より)



7



6



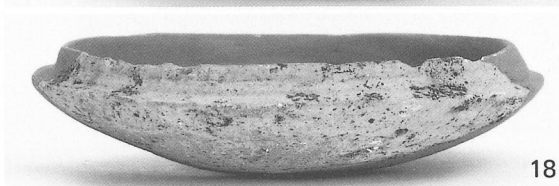
8



2



11



18



12

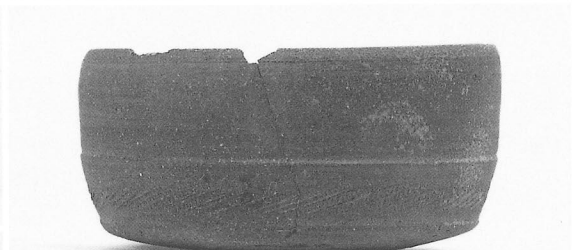


28

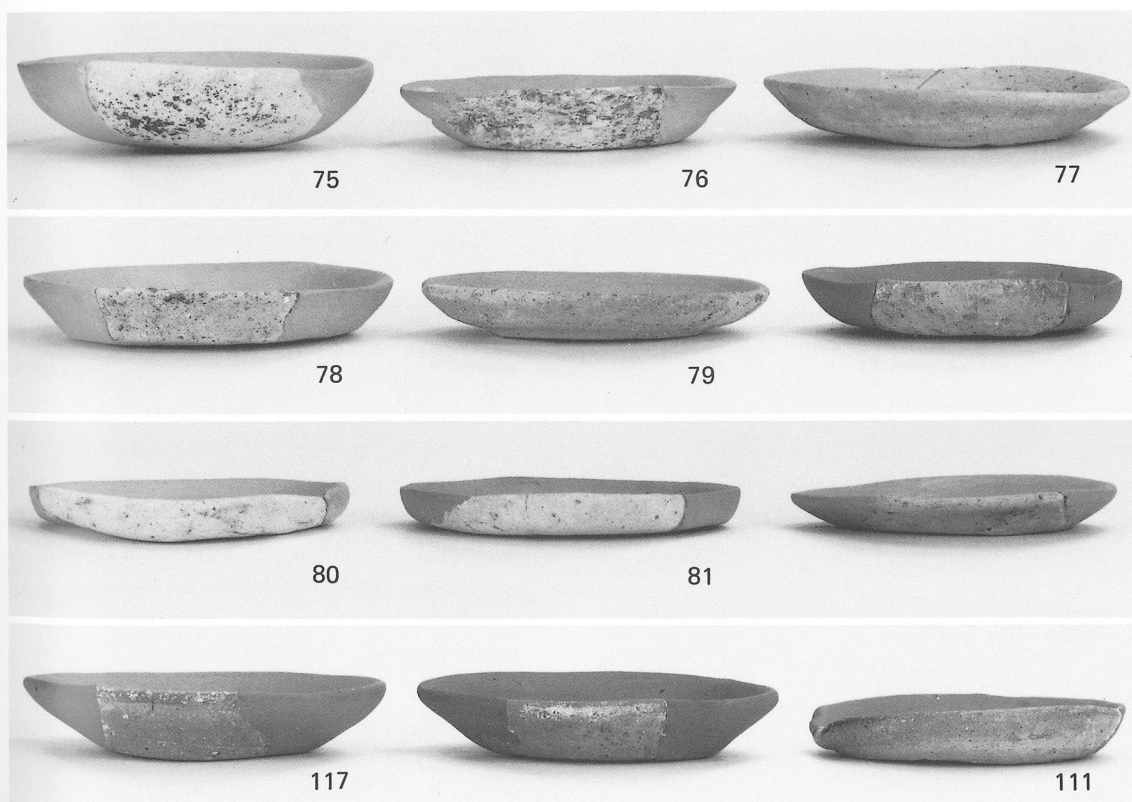
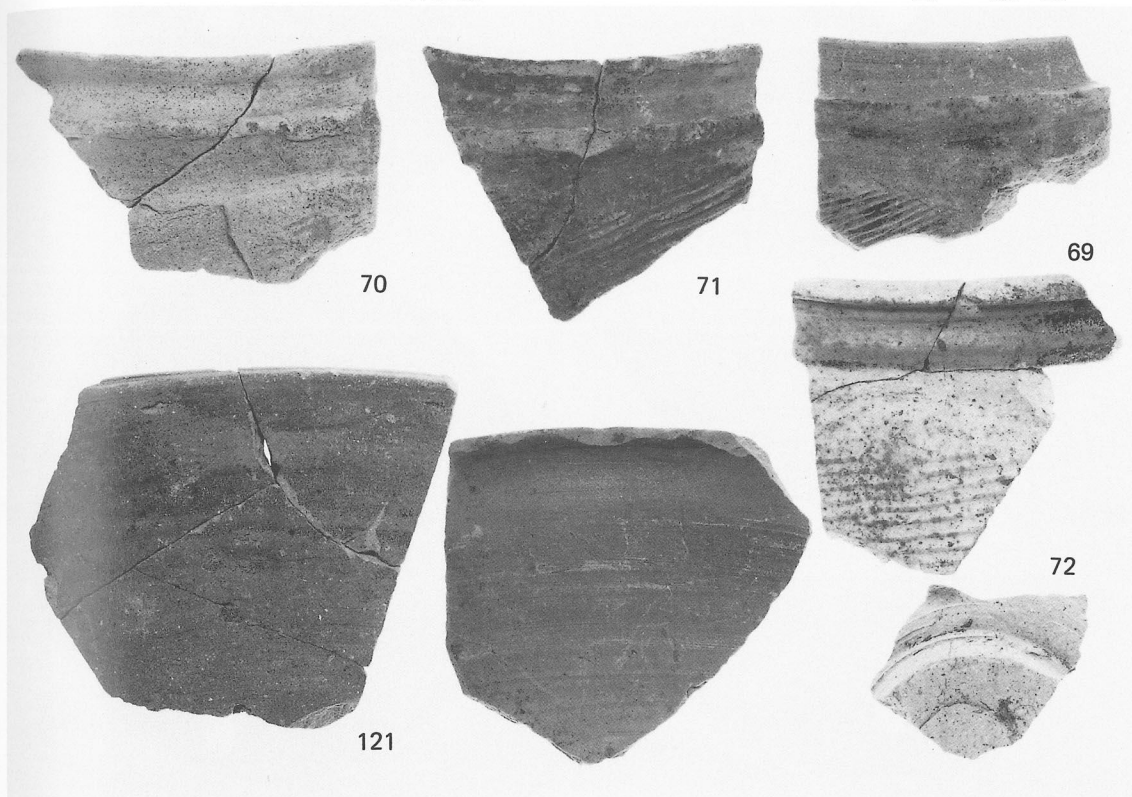


22

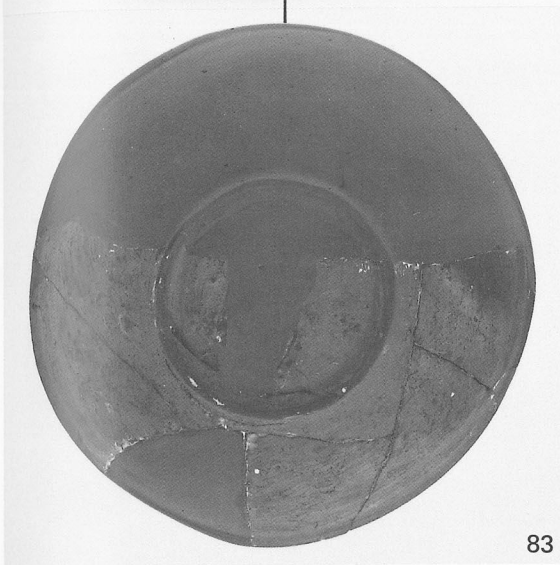
竪穴住居 I (2・6・7) 竪穴住居 II (8・11・12)
 竪穴住居 III (18・22) 竪穴住居 IV (28)



竪穴住居Ⅳ(23~25) 竪穴住居Ⅴ(29~33・35)
包含層(61・65)



出土土器



83

101

106

107

86

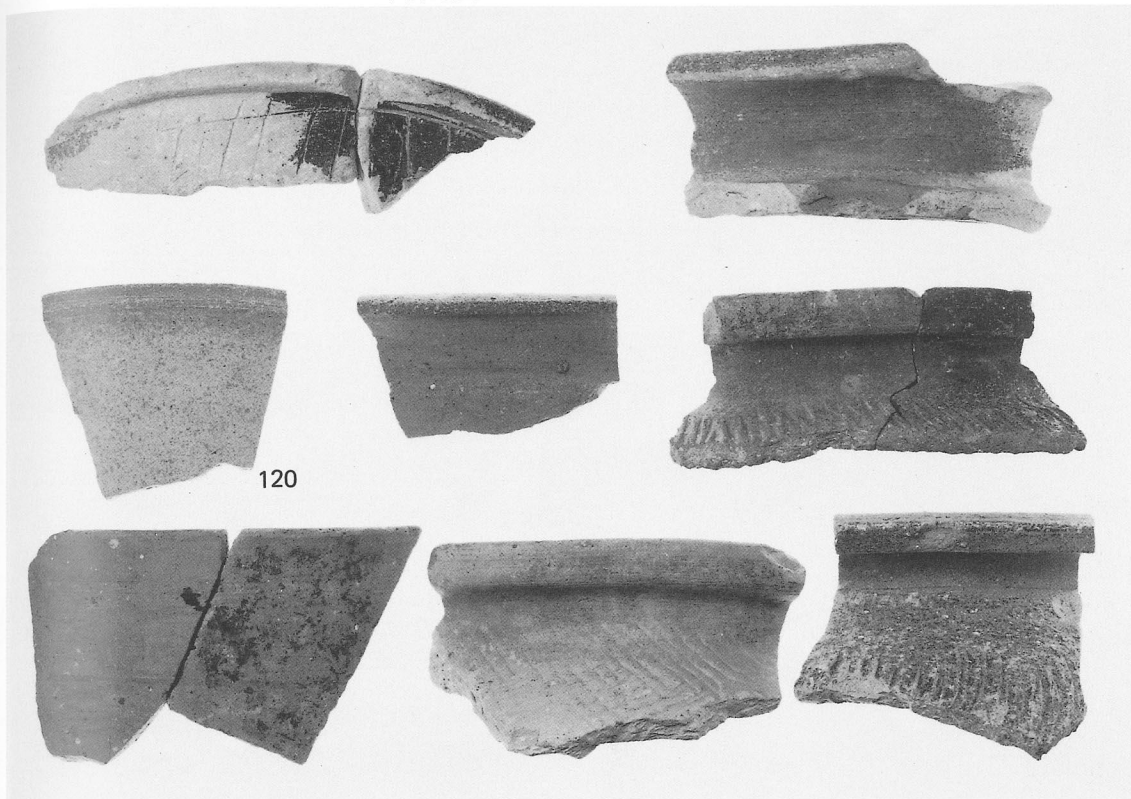
103

96

102

89

104



120



127

126

123



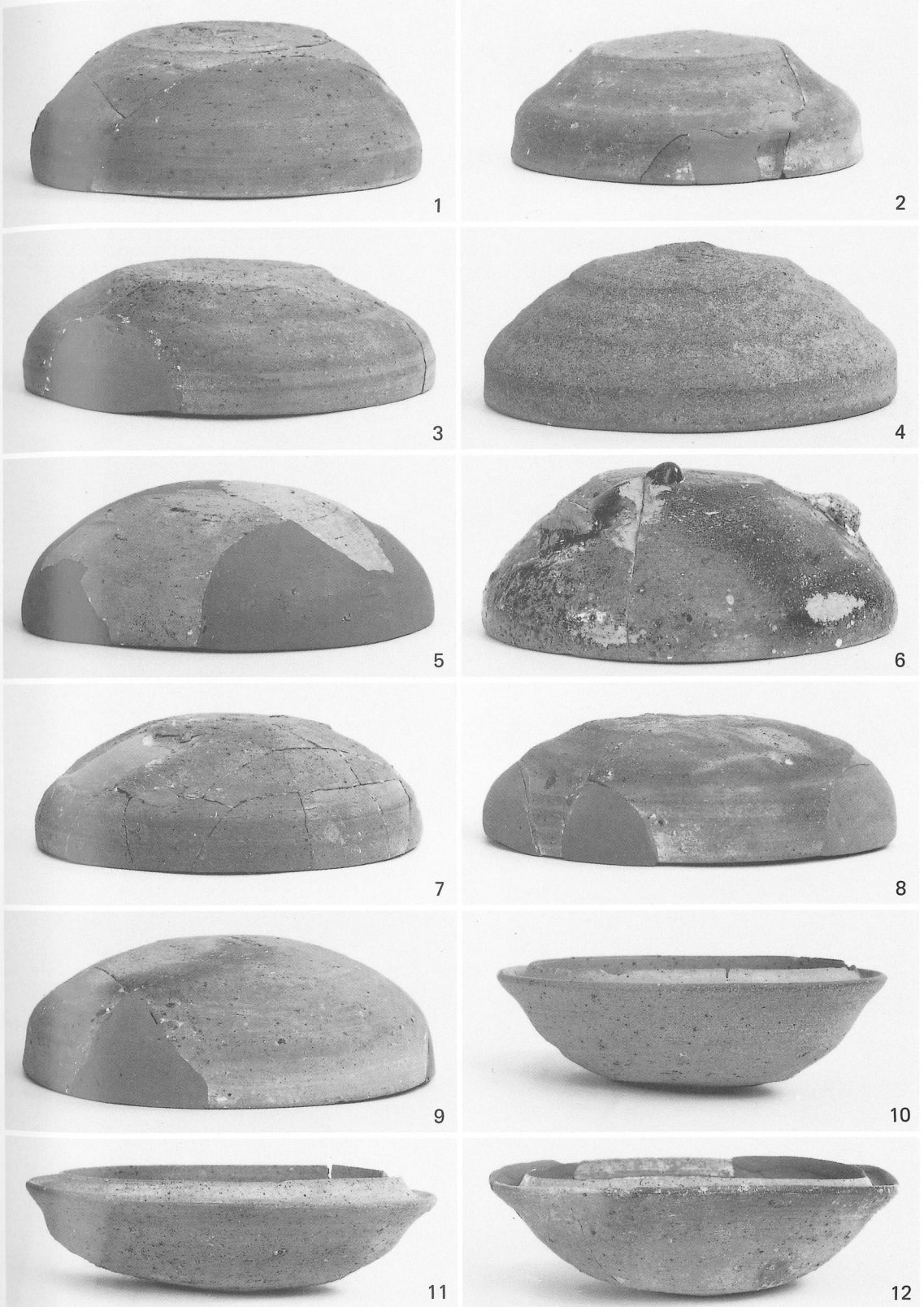
1 墳丘と埋葬施設(南より)
2 墳丘と列石(北より)



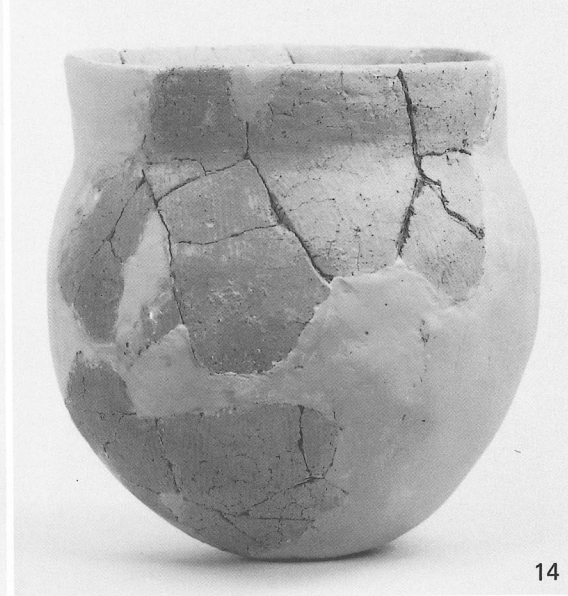
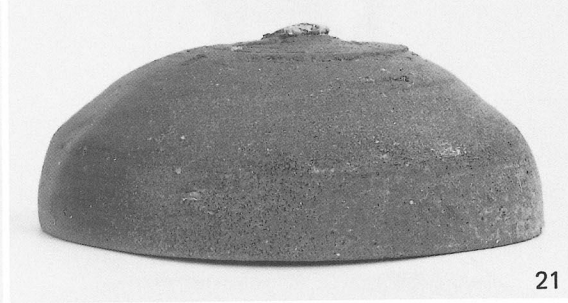
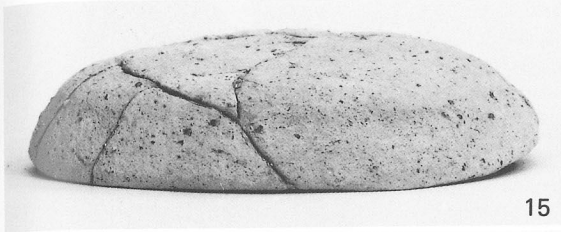
- 1 墳丘と列石(北西より)
- 2 列石と盛土(北より)



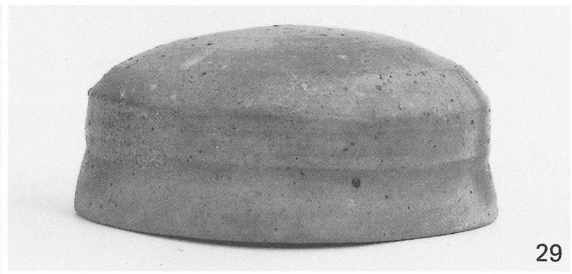
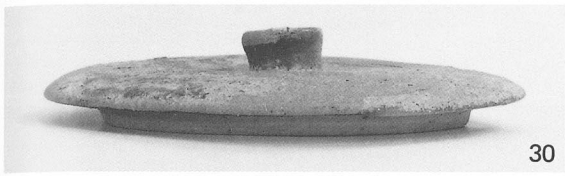
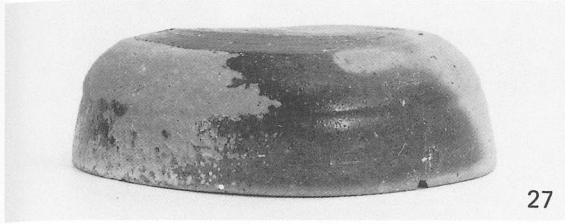
- 1 石室(南より)
- 2 奥壁部付近の遺物出土状況(南より)



石室内出土土器



石室内出土土器



石室内出土土器



35



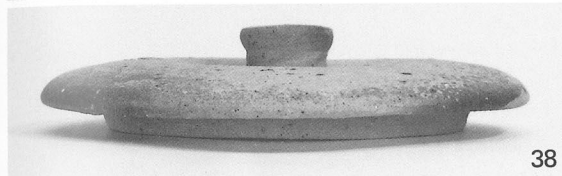
37



36



40



38



39



33



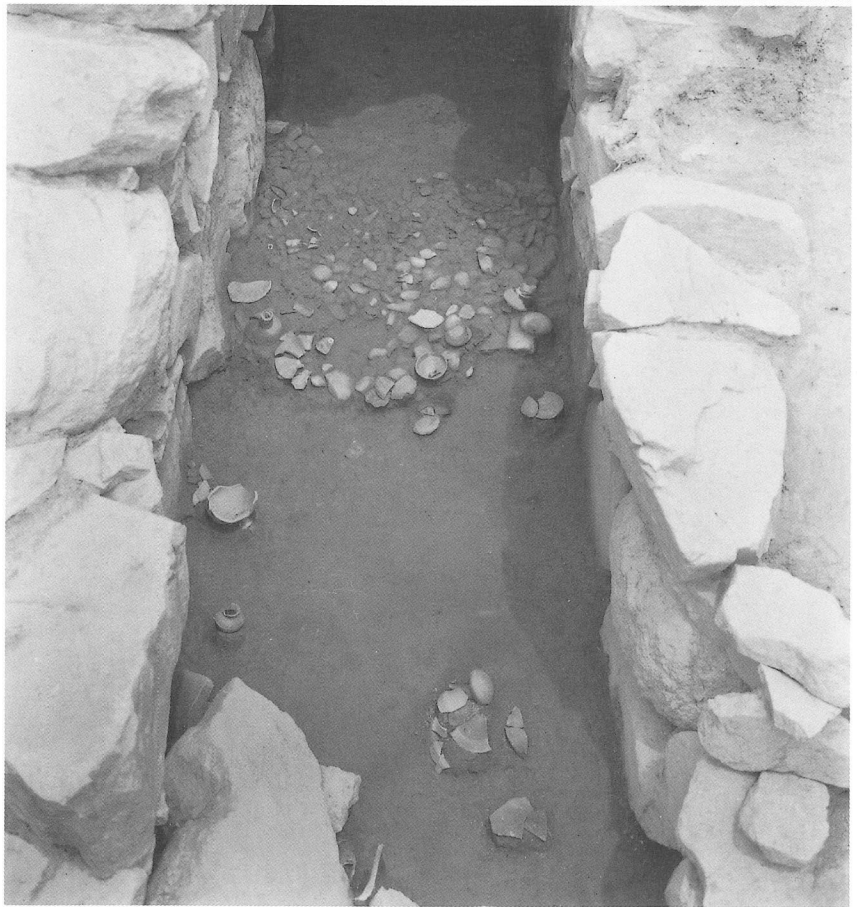
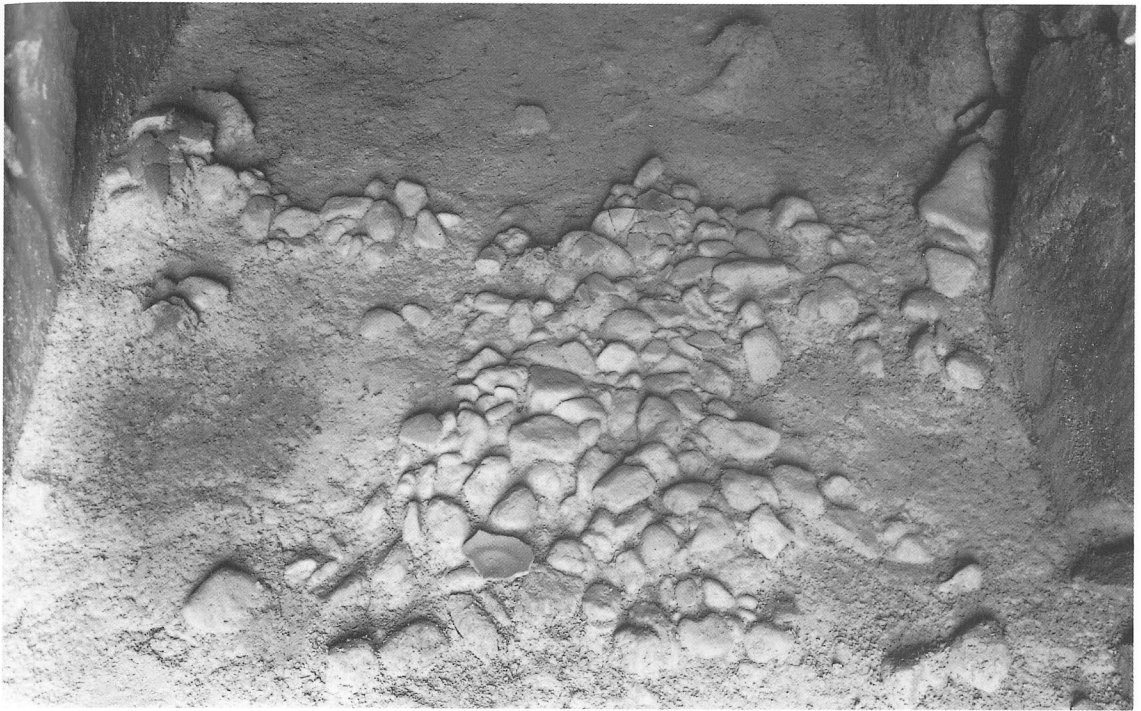
34



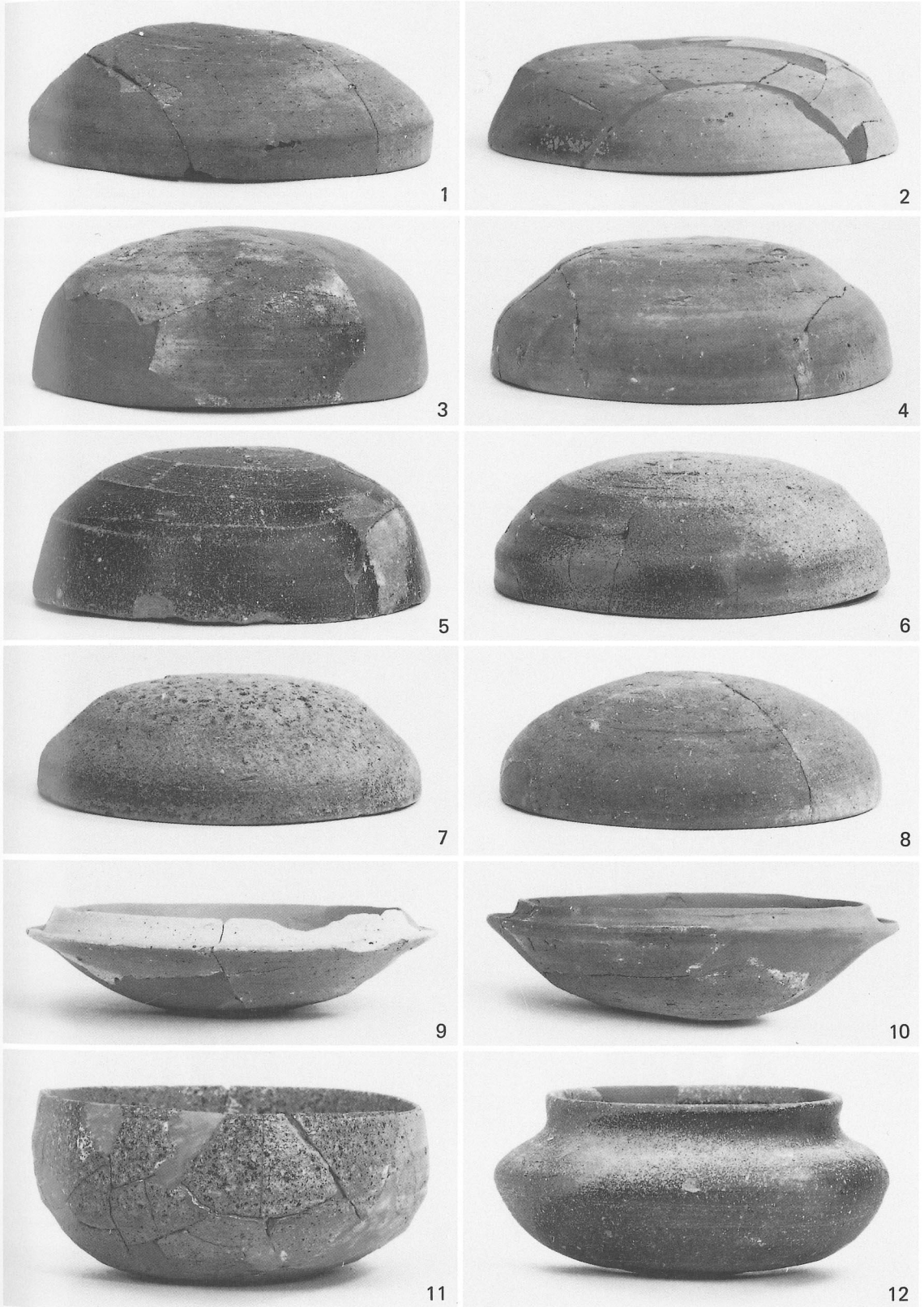
- 1 墳丘と横穴式石室羨門部(南より)
- 2 横穴式石室奥壁裏込め(北より)



- 1 石室(南より)
- 2 閉塞石遺存状況(南より)



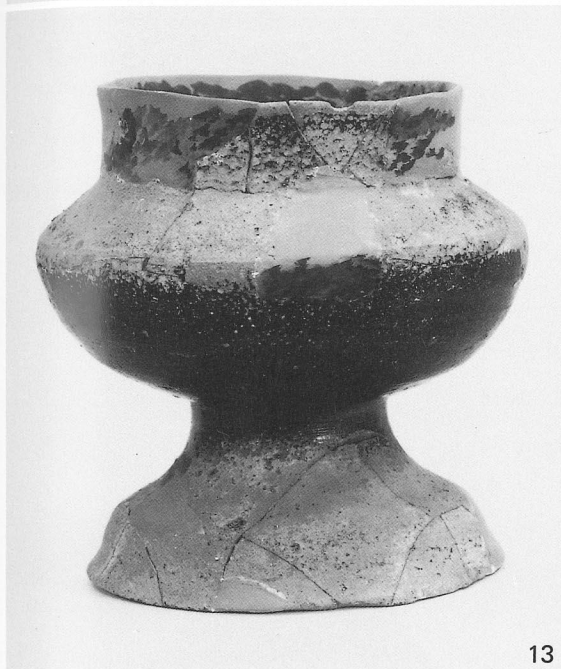
- 1 奥壁付近の遺物出土状況(南より)
- 2 羨門部付近の遺物出土状況(南より)



石室内出土土器



18



13



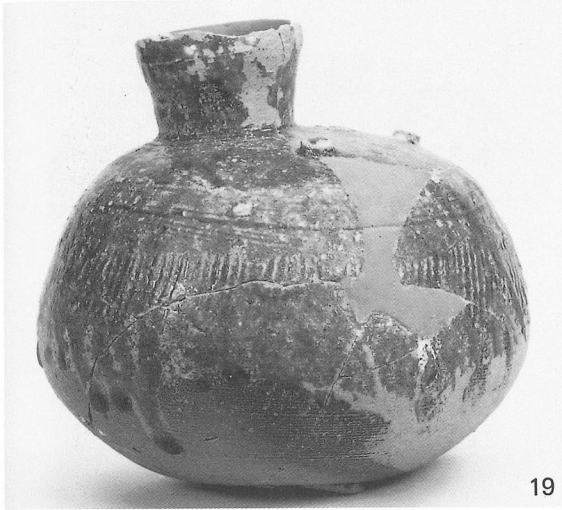
14



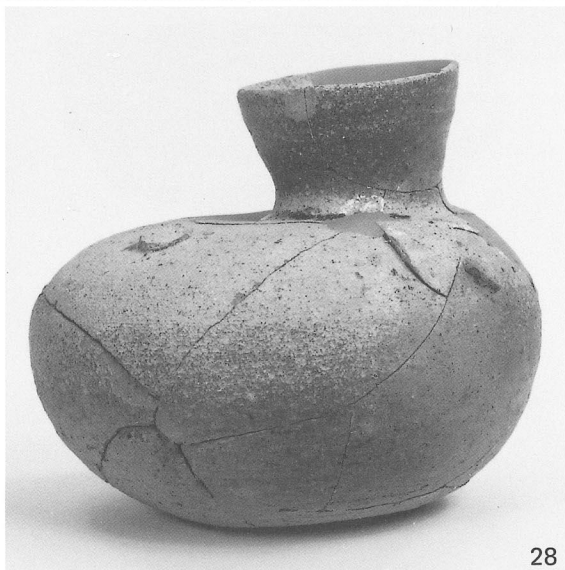
15



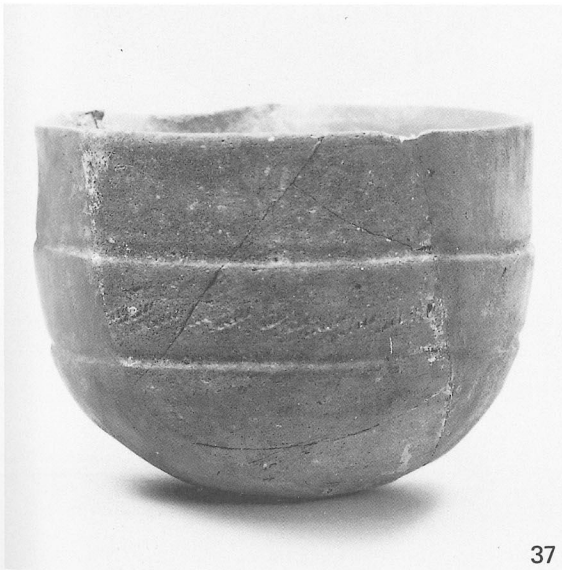
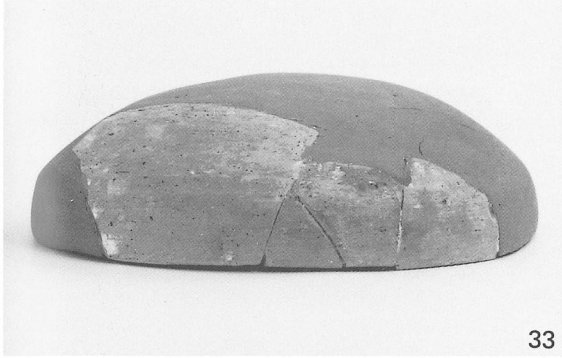
16



石室内出土土器



石室内出土土器



石室内出土土器



43



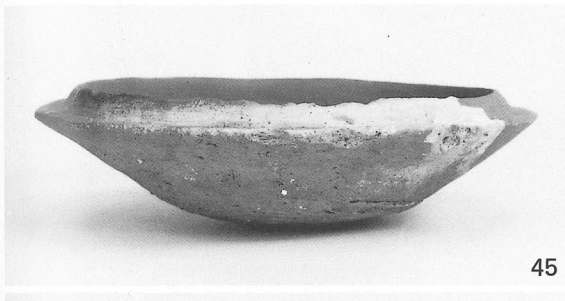
42



44



40



45



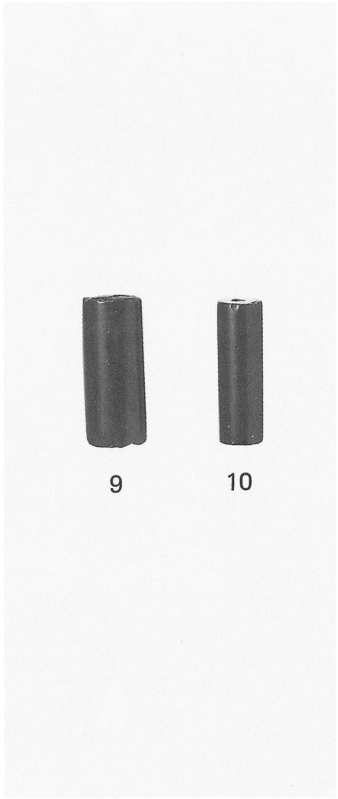
39



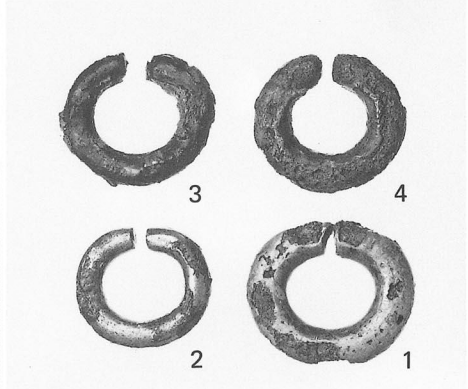
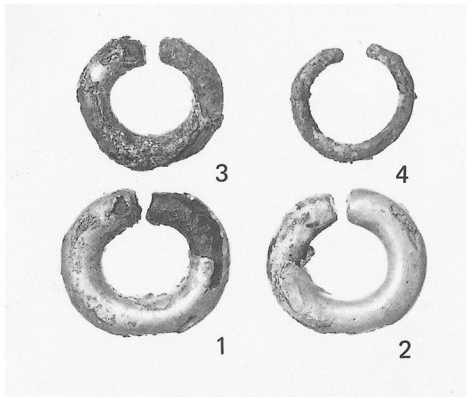
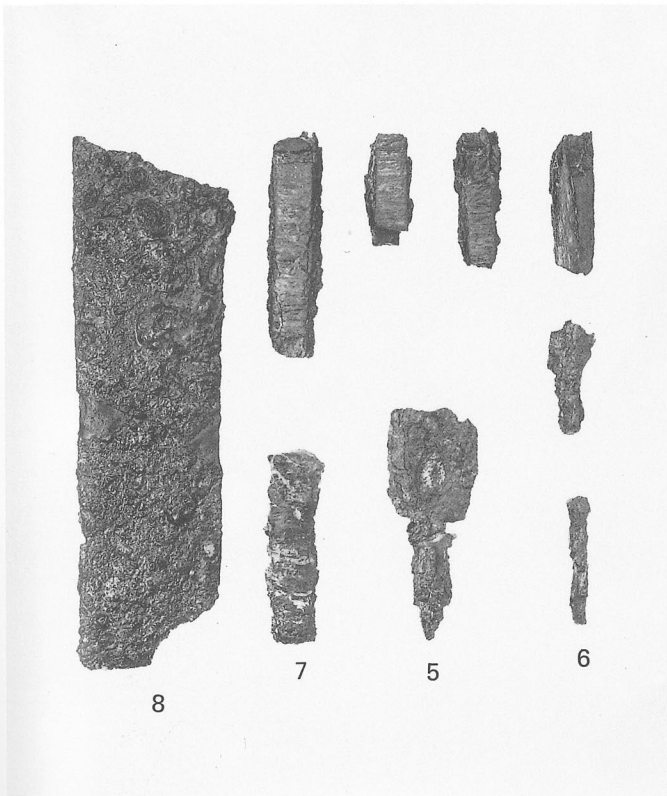
41



石室内出土土器



50



1 (左)八木ノ谷 2号墳出土土器
 2 (左上)同 1号墳出土鉄器
 (左下)同 2号墳出土土器

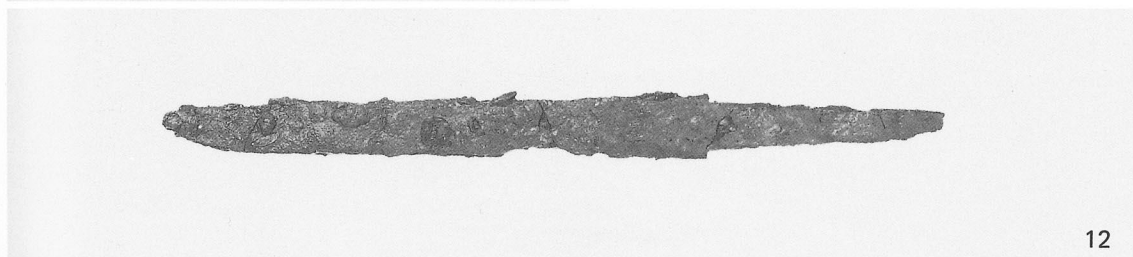
(右)同 2号墳出土玉類
 (右上)同 1号墳出土耳環
 (右下)同 2号墳出土耳環



- 1 全景(南より)
- 2 1号墓(南より)



1 (左) 2号墓上面(南より) (右) 2号墓出土状況(南より)
2 (左) 3号墓(南より) (右) 近世墓(西より)



出土土器・鉄器



- 1 全景(東より)
- 2 石室石積み(北西より)



1 石室(東より)

2 遺物の出土状況(北西より)



1 石室掘り方(北東より)
2 奥壁(北西より)



3



4



2



13



9



6



1



5



7



8



14



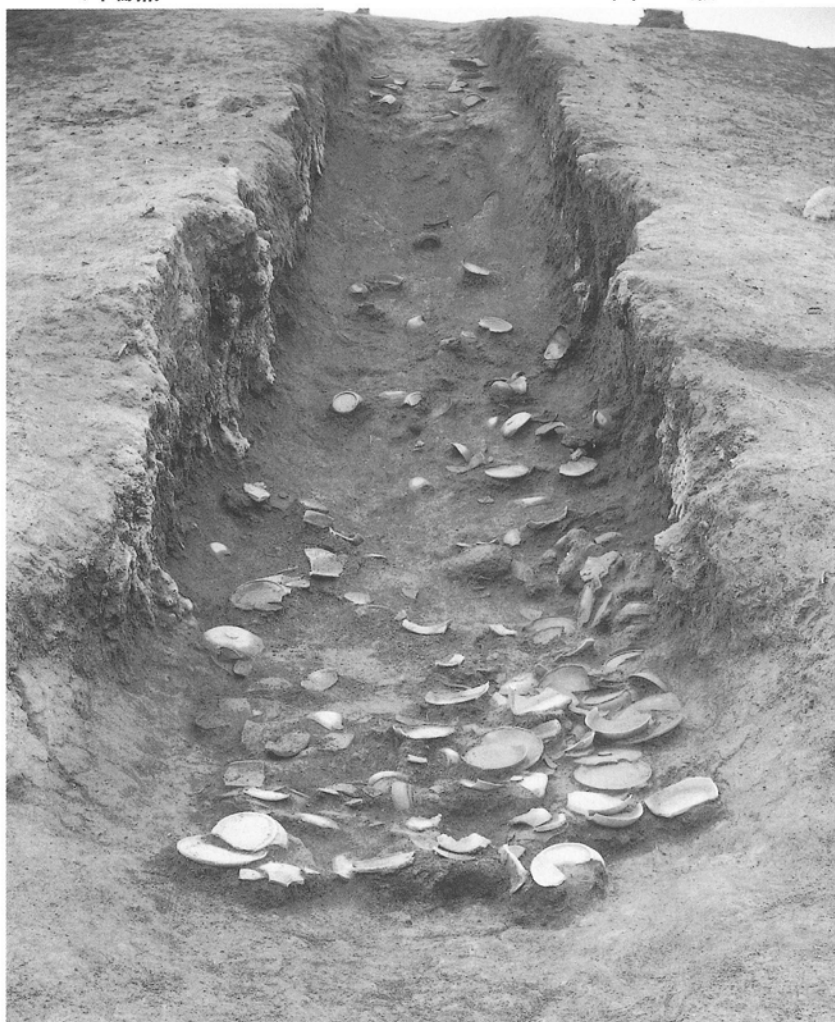
15



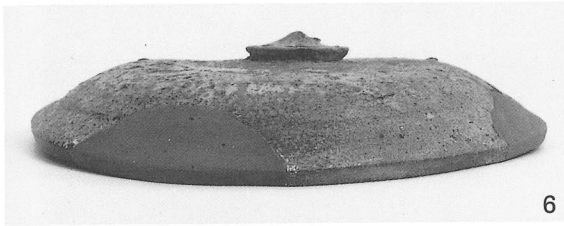
石室出土土器・耳環・刀子・鉄鏃



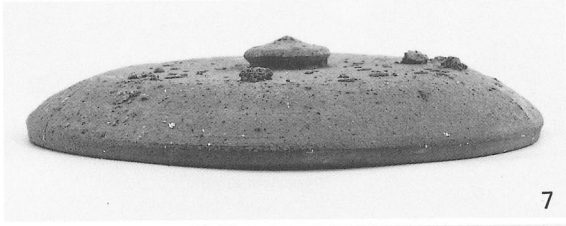
- 1 発掘前の状況(北西より)
- 2 全景(北西より)



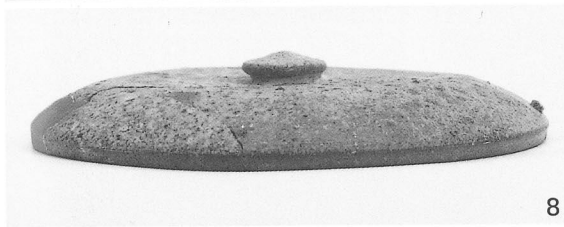
- 1 土器遺存状況(北より)
- 2 灰原堆積状況(南西より)



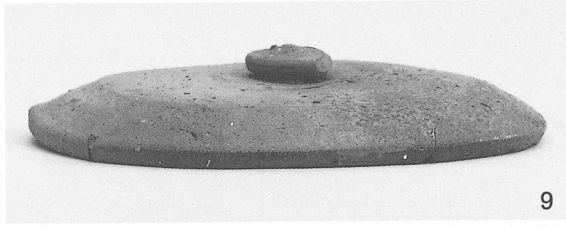
6



7



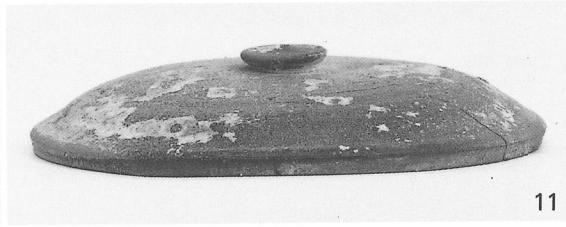
8



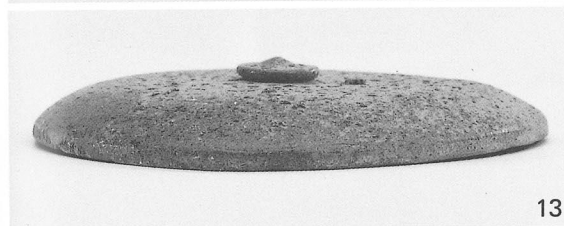
9



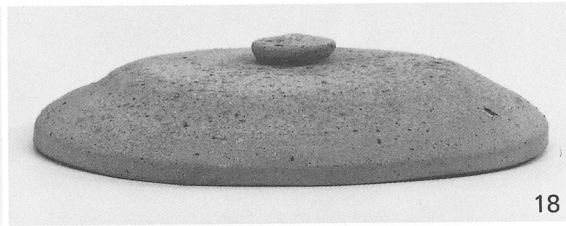
10



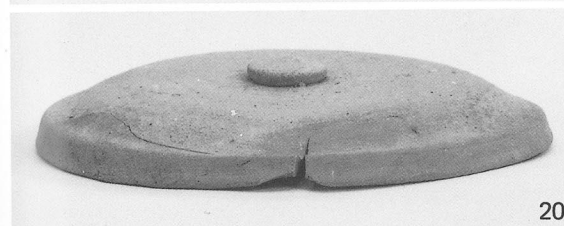
11



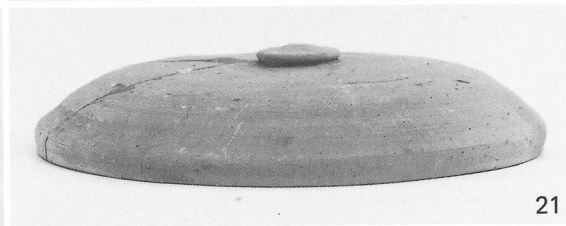
13



18



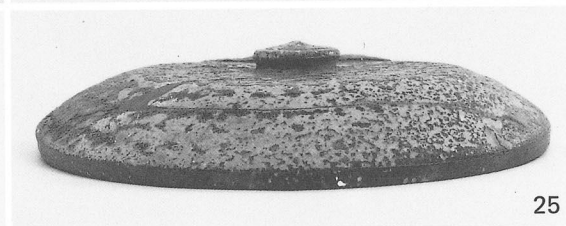
20



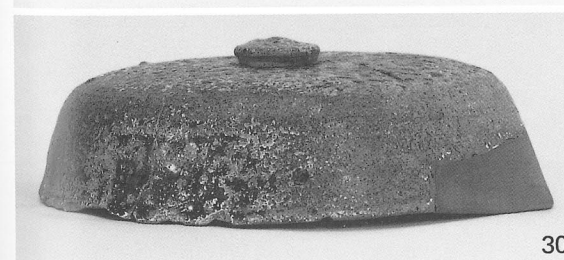
21



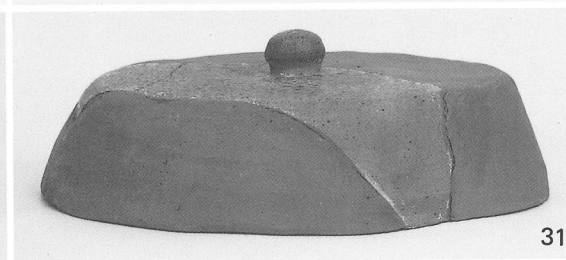
23



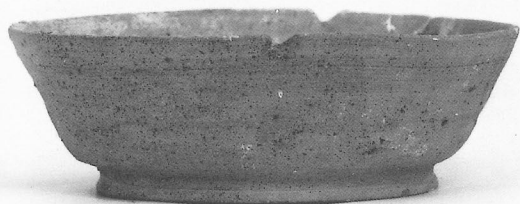
25



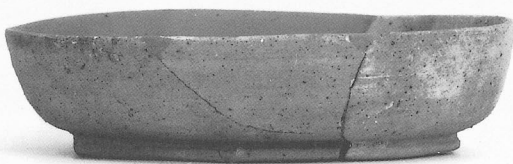
30



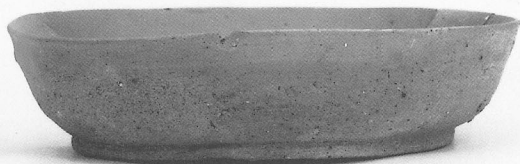
31



34



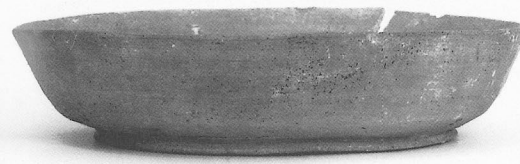
36



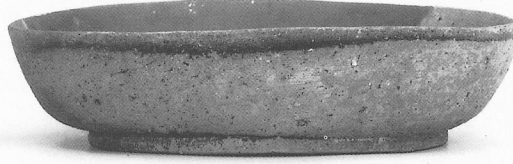
44



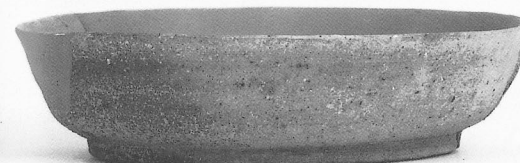
45



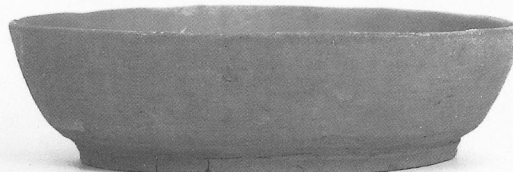
46



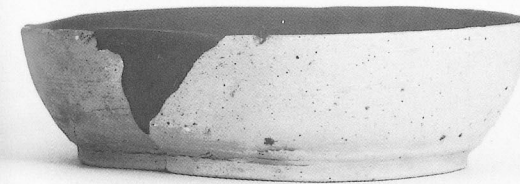
51



54



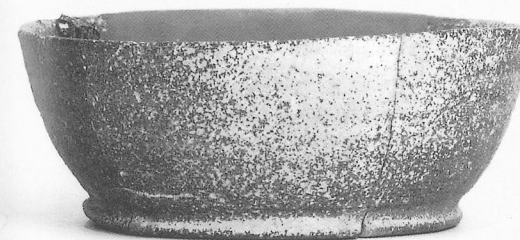
59



60



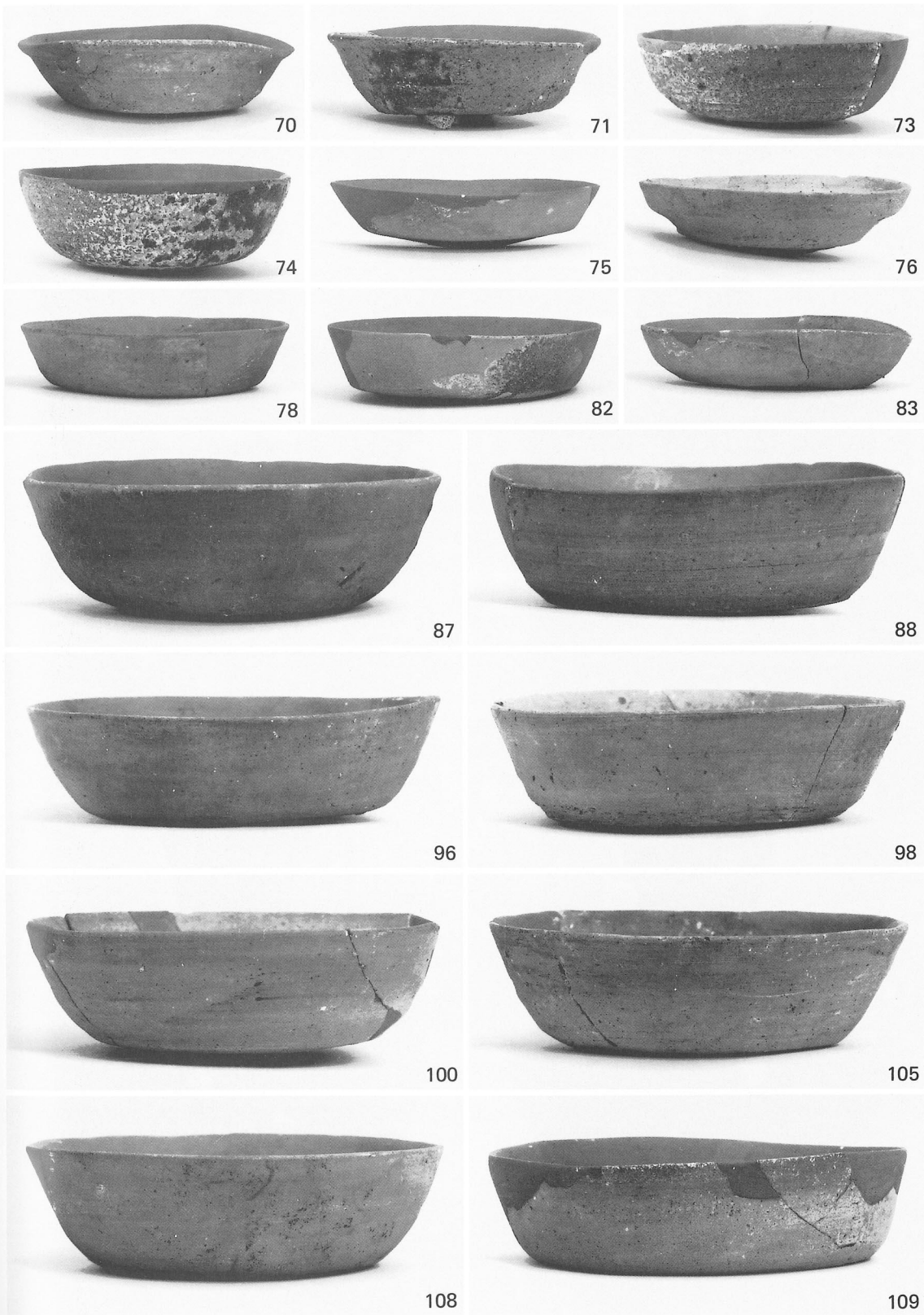
63



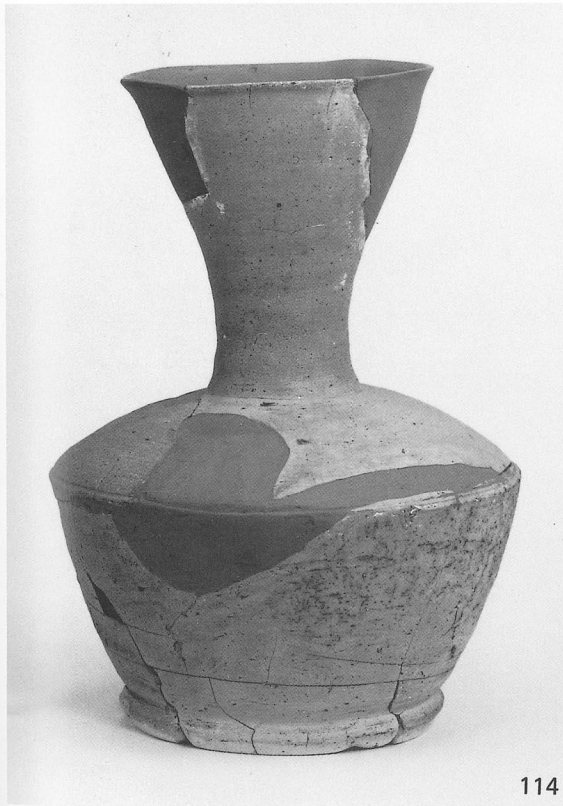
65



66



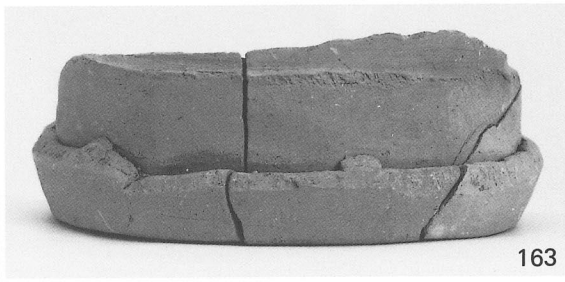
出土土器







153



163



165



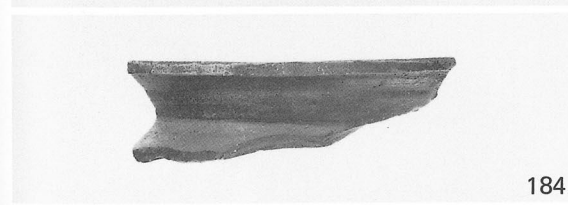
166



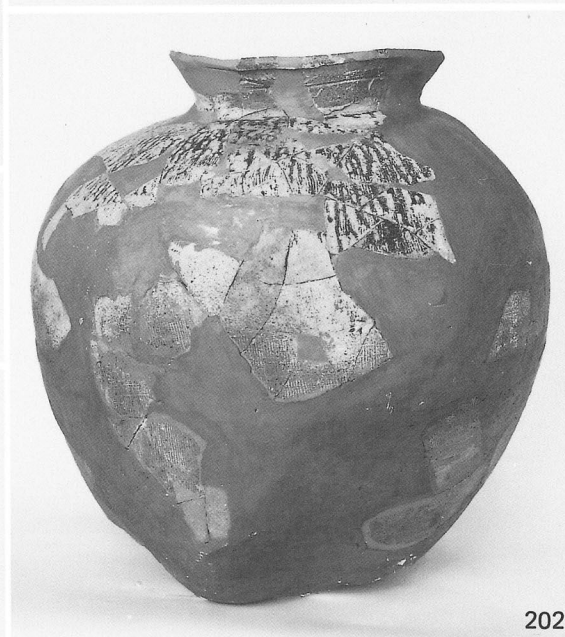
178



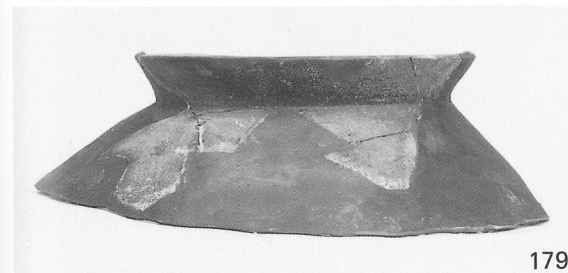
161



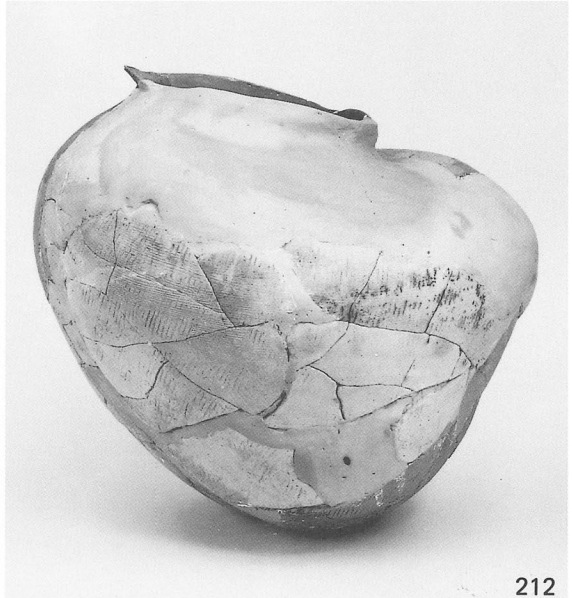
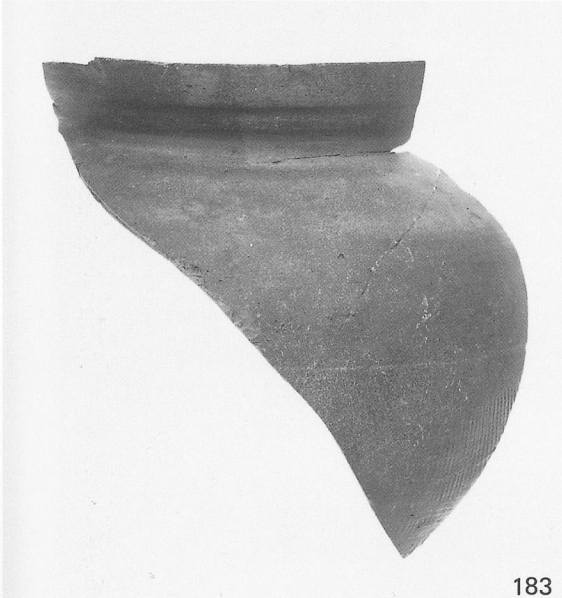
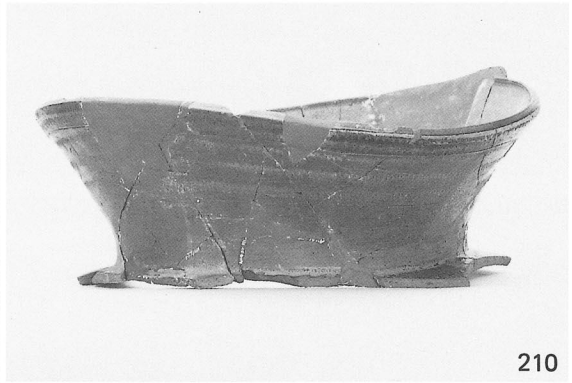
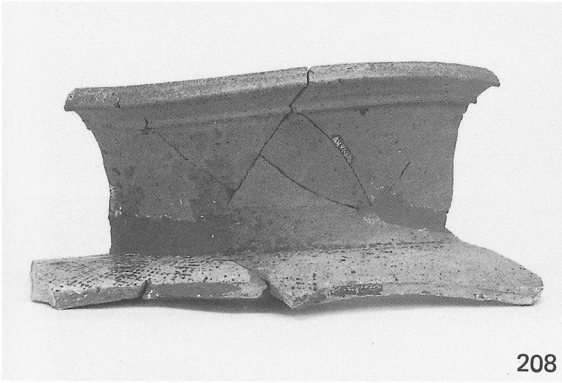
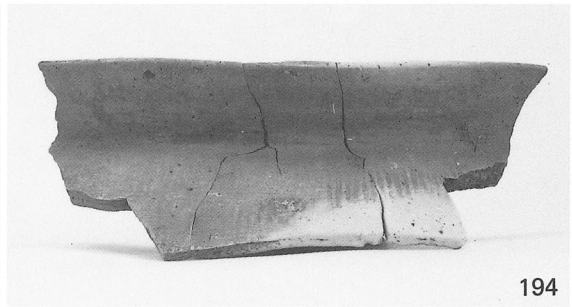
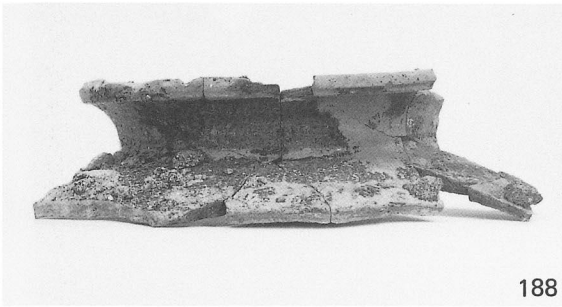
184

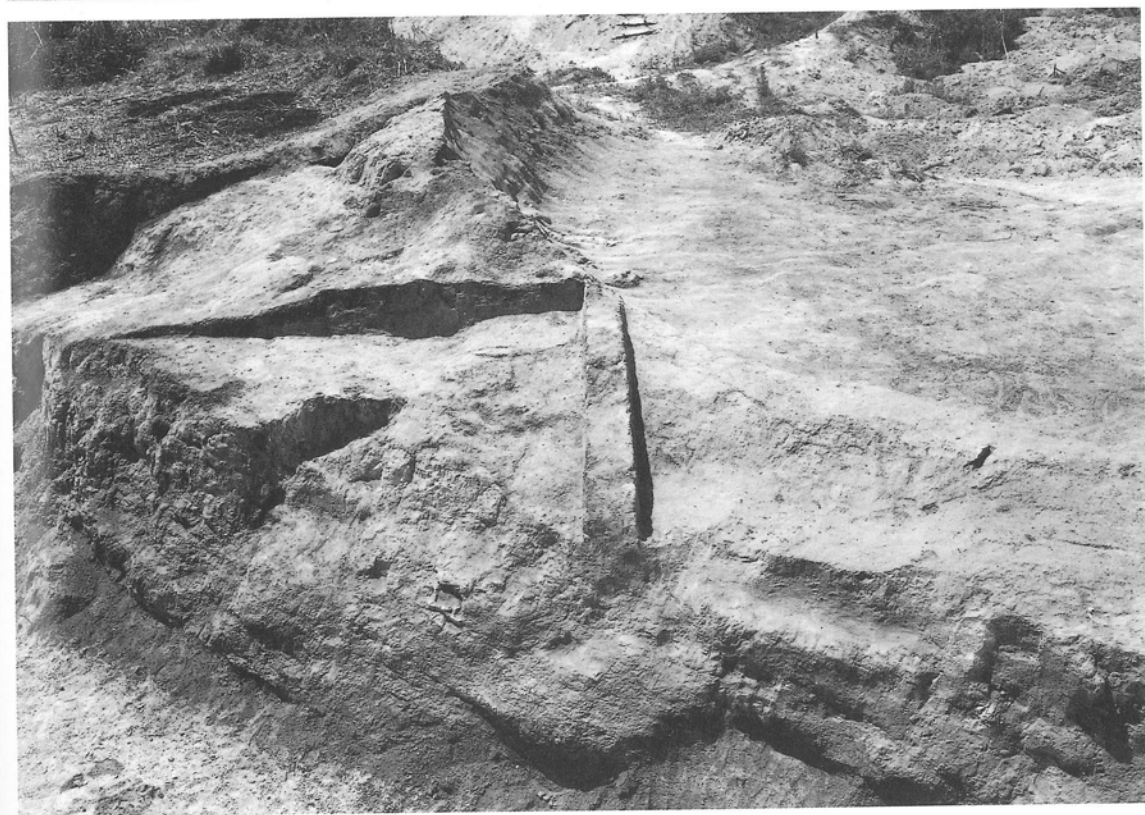


202



179

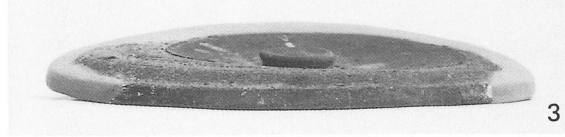
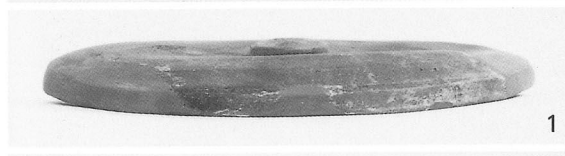
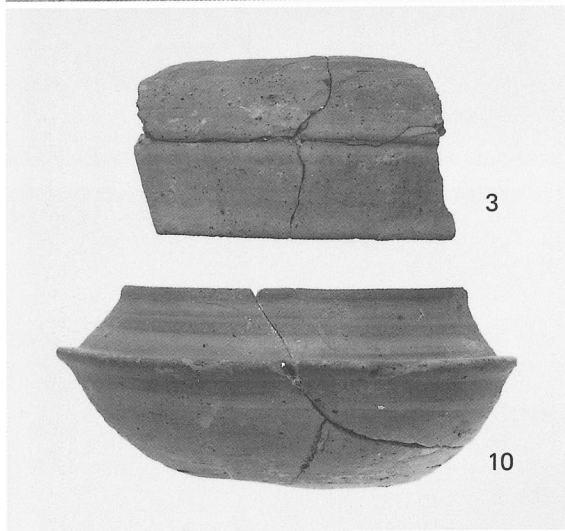




1 遠景
2 1号窯全景



1 2号窯調査前(南東より)
2 2号窯調査後(南東より)



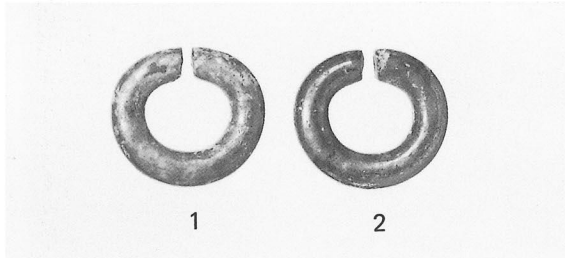
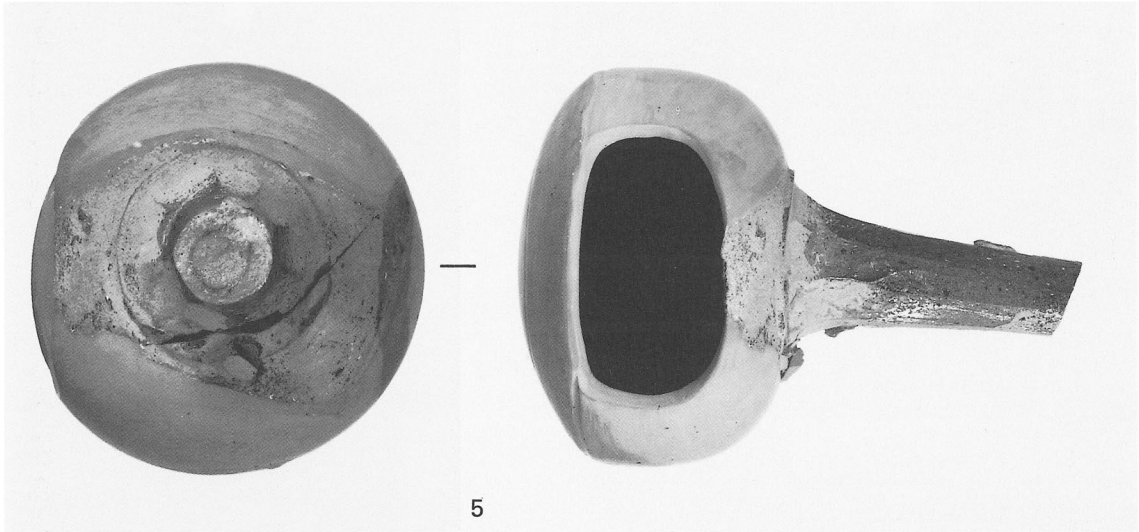
1 2号窯遺物出土状況(北西より)
 2 1号窯(3・10・17・16)、2号窯(1・3・5・9・16)出土土器



1 石室遺存状況(東より)
2 石室石積み(北より)



- 1 石室内敷石遺存状況(北東より)
- 2 石室内遺物出土状況(北より)



出土土器・耳環



1 墳丘(北西より)
2 墳丘北西部須恵器甕出土状況(北より)



- 1 第1埋葬施設(西より)
- 2 第2埋葬施設(竪穴式石室)(北より)



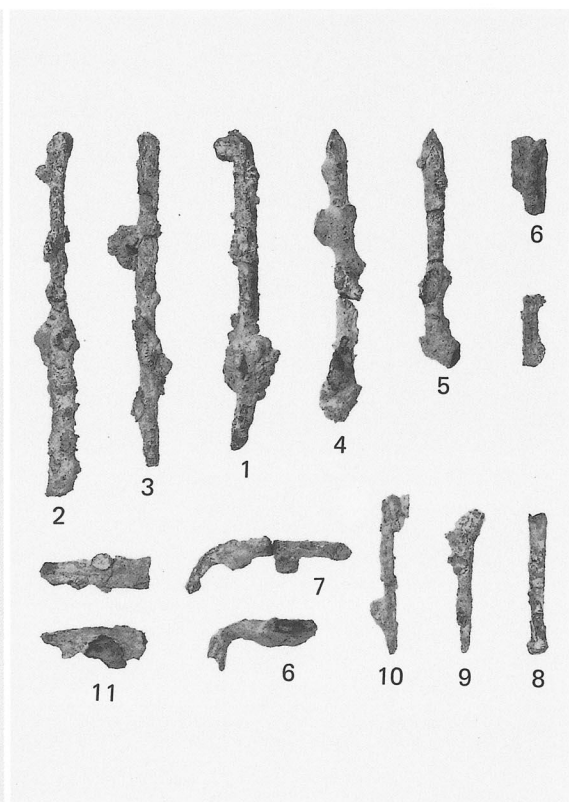
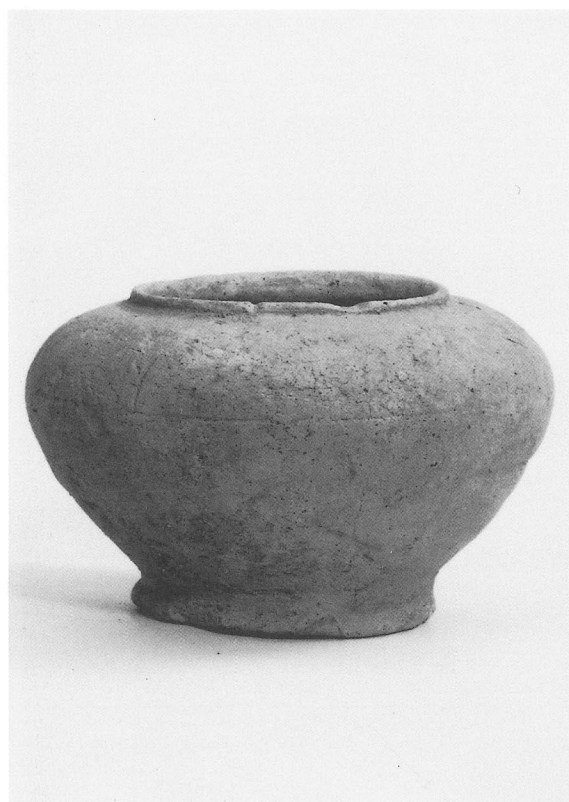


1 墳丘(北西より)

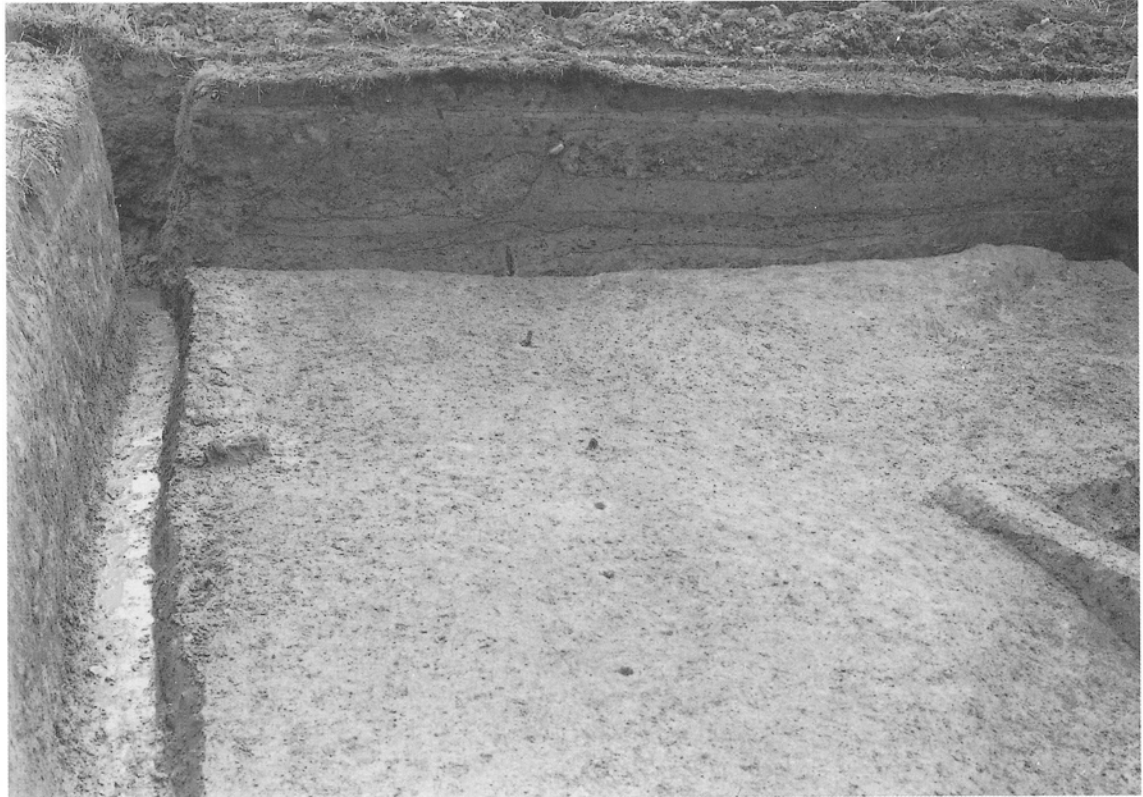
2 墳丘列石と埋葬施設(北より)



- 1 石室内遺物出土状況(南より)
- 2 石室石積み(東より)



1 石室と盛土(北より)
2 (左)石室内出土須恵器 (右)石室内出土鉄釘



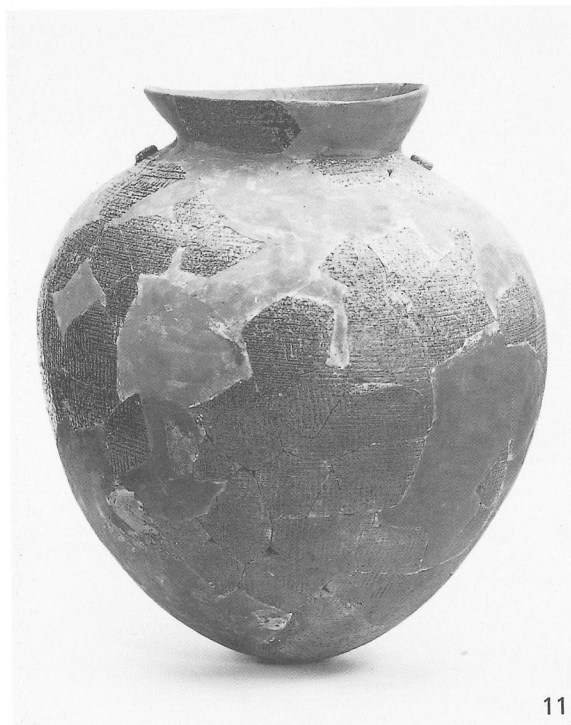
- 1 水田跡(北東より)
- 2 杭列と土層(北東より)



- 1 墳丘と埋葬施設(南より)
- 2 盛土と埋葬施設(南より)



- 1 石室内遺物出土状況(南より)
- 2 墓壙と石室石組み(西より)



1 墳丘基盤と埋葬施設(南より)
2 出土須恵器(11・1・2-墳丘、3-石室内)



1 全景(北東より)

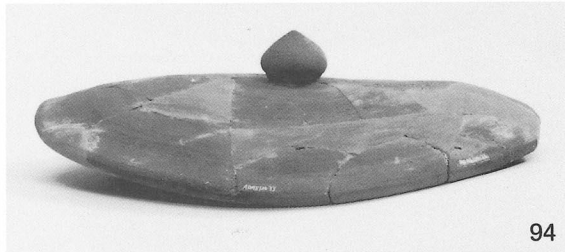
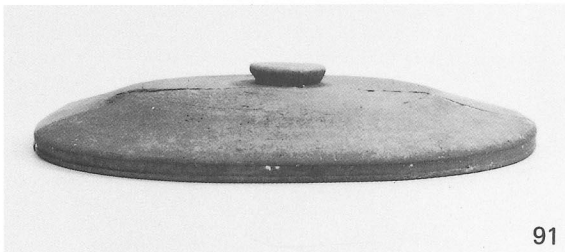
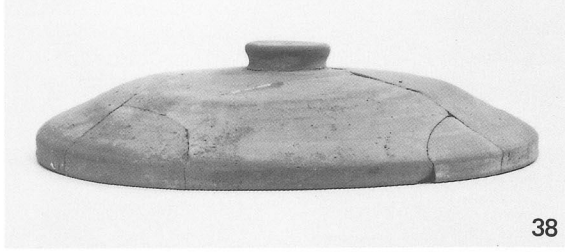
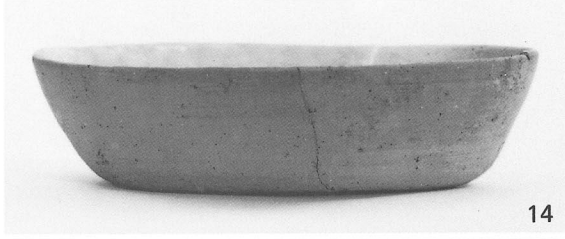
2 1号窯窯体と土器遺存状況(北西より)



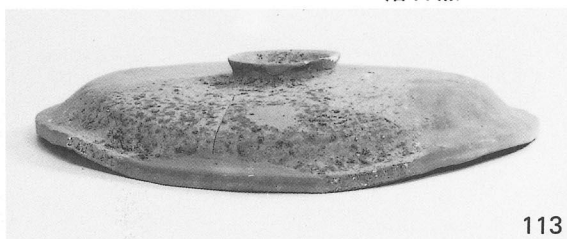
- 1 1号窯灰原の状況(北より)
- 2 SX01(北より)



1 2号窯全景(北西より)
2 窯体内土器(北西より)



1号窯出土土器



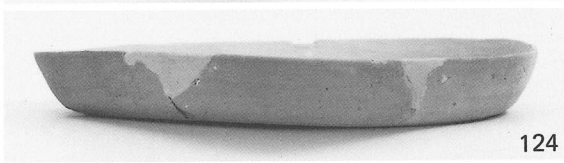
113



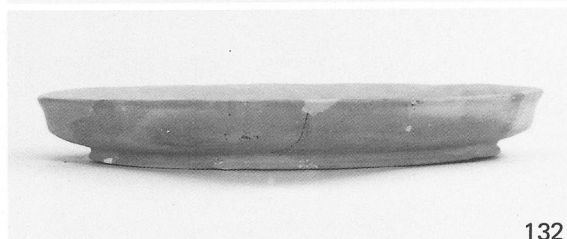
118



121



124



132



142



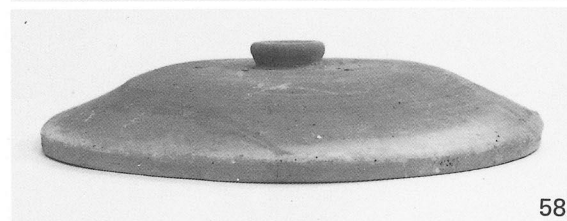
130



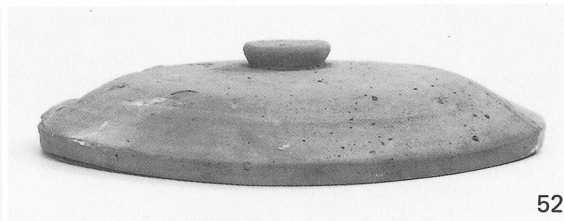
17



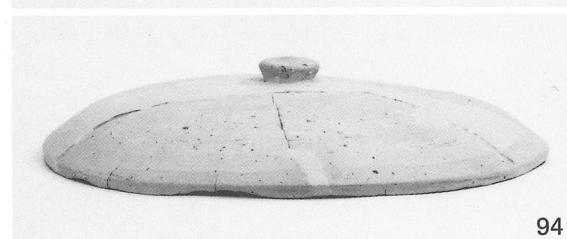
33



58



52



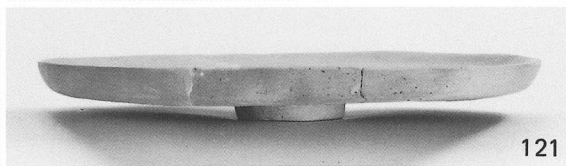
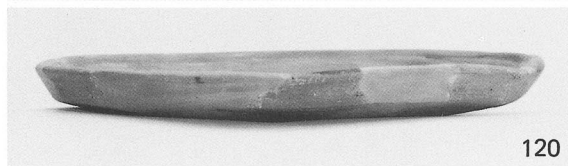
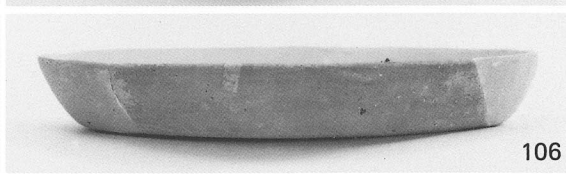
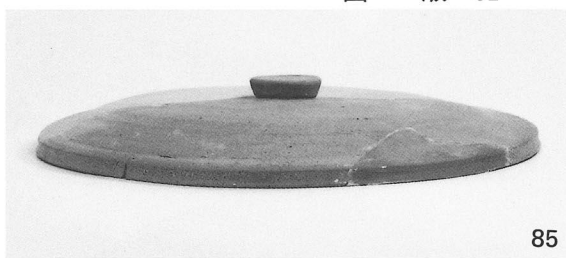
94



72

1号窯(113・118・121・124・132・130・142)出土土器

2号窯(17・33・58・52・94・72)出土土器



2号窯出土土器



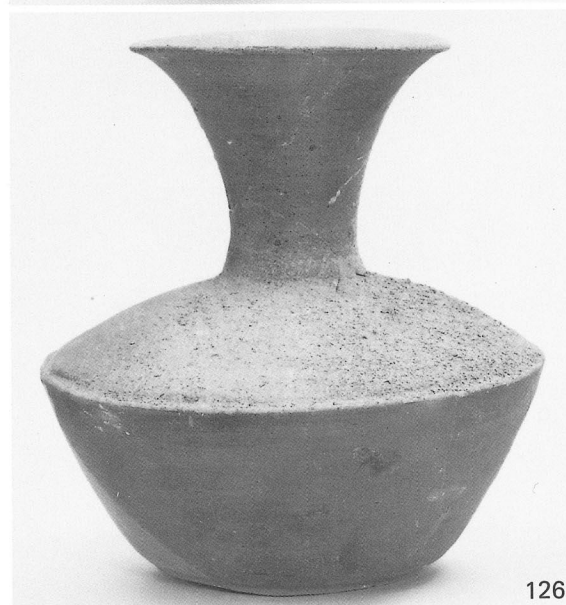
125



138



142



126



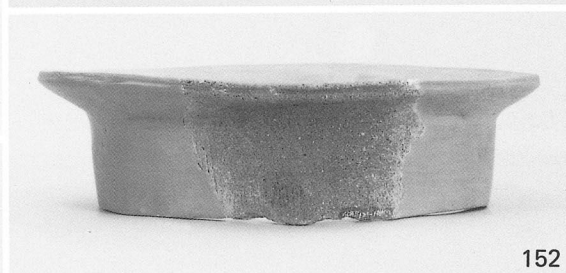
145



136



146



2号窯出土土器



- 1 遺跡の立地
- 2 11・20・21トレンチ円形状遺構(北より)

昭和62年 3 月30日印刷
昭和62年 3 月31日発行

兵庫県文化財調査報告 第50冊

青野ダム建設に伴う 発掘調査報告書(1)

編集
発行

兵庫県教育委員会
〒652 神戸市兵庫区荒田町2丁目1番5号
☎ (078) 531-7011

印刷

株式会社 精文舎
〒652 神戸市兵庫区下沢通6丁目2-18
☎ (078) 575-4729

青野ダム建設に伴う
発掘調査報告書 (1)

〔 付 図 〕

付図 1

青野ダム建設地内埋蔵文化財
包蔵地位置図 (昭和49年3月実施)

縮尺 1 : 10,000

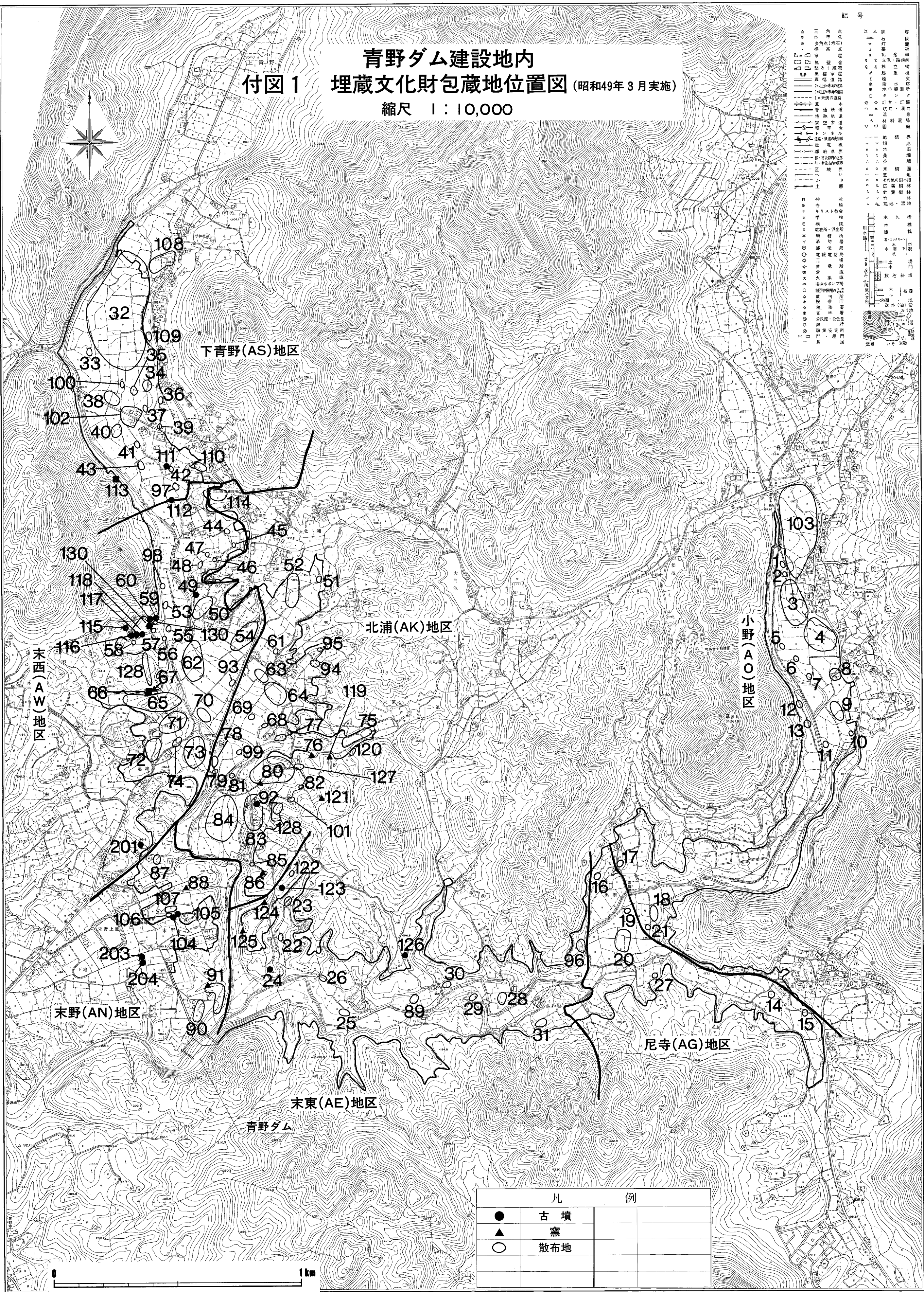
付図 2

青野ダム建設地内
分布地図

縮尺 1 : 10,000

青野ダム建設地内 付図1 埋蔵文化財包蔵地位置図 (昭和49年3月実施) 縮尺 1:10,000

- 記号
- △ 点
 - 角
 - 三
 - ◇ 水
 - ▽ 多
 - ◇ 角
 - △ 高
 - 埋
 - 蔵
 - 文
 - 化
 - 財
 - 包
 - 蔵
 - 地
 - 位
 - 置
 - 図
 - 1
 - 2
 - 3
 - 4
 - 5
 - 6
 - 7
 - 8
 - 9
 - 10
 - 11
 - 12
 - 13
 - 14
 - 15
 - 16
 - 17
 - 18
 - 19
 - 20
 - 21
 - 22
 - 23
 - 24
 - 25
 - 26
 - 27
 - 28
 - 29
 - 30
 - 31
 - 32
 - 33
 - 34
 - 35
 - 36
 - 37
 - 38
 - 39
 - 40
 - 41
 - 42
 - 43
 - 44
 - 45
 - 46
 - 47
 - 48
 - 49
 - 50
 - 51
 - 52
 - 53
 - 54
 - 55
 - 56
 - 57
 - 58
 - 59
 - 60
 - 61
 - 62
 - 63
 - 64
 - 65
 - 66
 - 67
 - 68
 - 69
 - 70
 - 71
 - 72
 - 73
 - 74
 - 75
 - 76
 - 77
 - 78
 - 79
 - 80
 - 81
 - 82
 - 83
 - 84
 - 85
 - 86
 - 87
 - 88
 - 89
 - 90
 - 91
 - 92
 - 93
 - 94
 - 95
 - 96
 - 97
 - 98
 - 99
 - 100
 - 101
 - 102
 - 103
 - 104
 - 105
 - 106
 - 107
 - 108
 - 109
 - 110
 - 111
 - 112
 - 113
 - 114
 - 115
 - 116
 - 117
 - 118
 - 119
 - 120
 - 121
 - 122
 - 123
 - 124
 - 125
 - 126
 - 127
 - 128
 - 129
 - 130
 - 131
 - 132
 - 133
 - 134
 - 135
 - 136
 - 137
 - 138
 - 139
 - 140
 - 141
 - 142
 - 143
 - 144
 - 145
 - 146
 - 147
 - 148
 - 149
 - 150
 - 151
 - 152
 - 153
 - 154
 - 155
 - 156
 - 157
 - 158
 - 159
 - 160
 - 161
 - 162
 - 163
 - 164
 - 165
 - 166
 - 167
 - 168
 - 169
 - 170
 - 171
 - 172
 - 173
 - 174
 - 175
 - 176
 - 177
 - 178
 - 179
 - 180
 - 181
 - 182
 - 183
 - 184
 - 185
 - 186
 - 187
 - 188
 - 189
 - 190
 - 191
 - 192
 - 193
 - 194
 - 195
 - 196
 - 197
 - 198
 - 199
 - 200
 - 201
 - 202
 - 203
 - 204
 - 205
 - 206
 - 207
 - 208
 - 209
 - 210
 - 211
 - 212
 - 213
 - 214
 - 215
 - 216
 - 217
 - 218
 - 219
 - 220
 - 221
 - 222
 - 223
 - 224
 - 225
 - 226
 - 227
 - 228
 - 229
 - 230
 - 231
 - 232
 - 233
 - 234
 - 235
 - 236
 - 237
 - 238
 - 239
 - 240
 - 241
 - 242
 - 243
 - 244
 - 245
 - 246
 - 247
 - 248
 - 249
 - 250
 - 251
 - 252
 - 253
 - 254
 - 255
 - 256
 - 257
 - 258
 - 259
 - 260
 - 261
 - 262
 - 263
 - 264
 - 265
 - 266
 - 267
 - 268
 - 269
 - 270
 - 271
 - 272
 - 273
 - 274
 - 275
 - 276
 - 277
 - 278
 - 279
 - 280
 - 281
 - 282
 - 283
 - 284
 - 285
 - 286
 - 287
 - 288
 - 289
 - 290
 - 291
 - 292
 - 293
 - 294
 - 295
 - 296
 - 297
 - 298
 - 299
 - 300



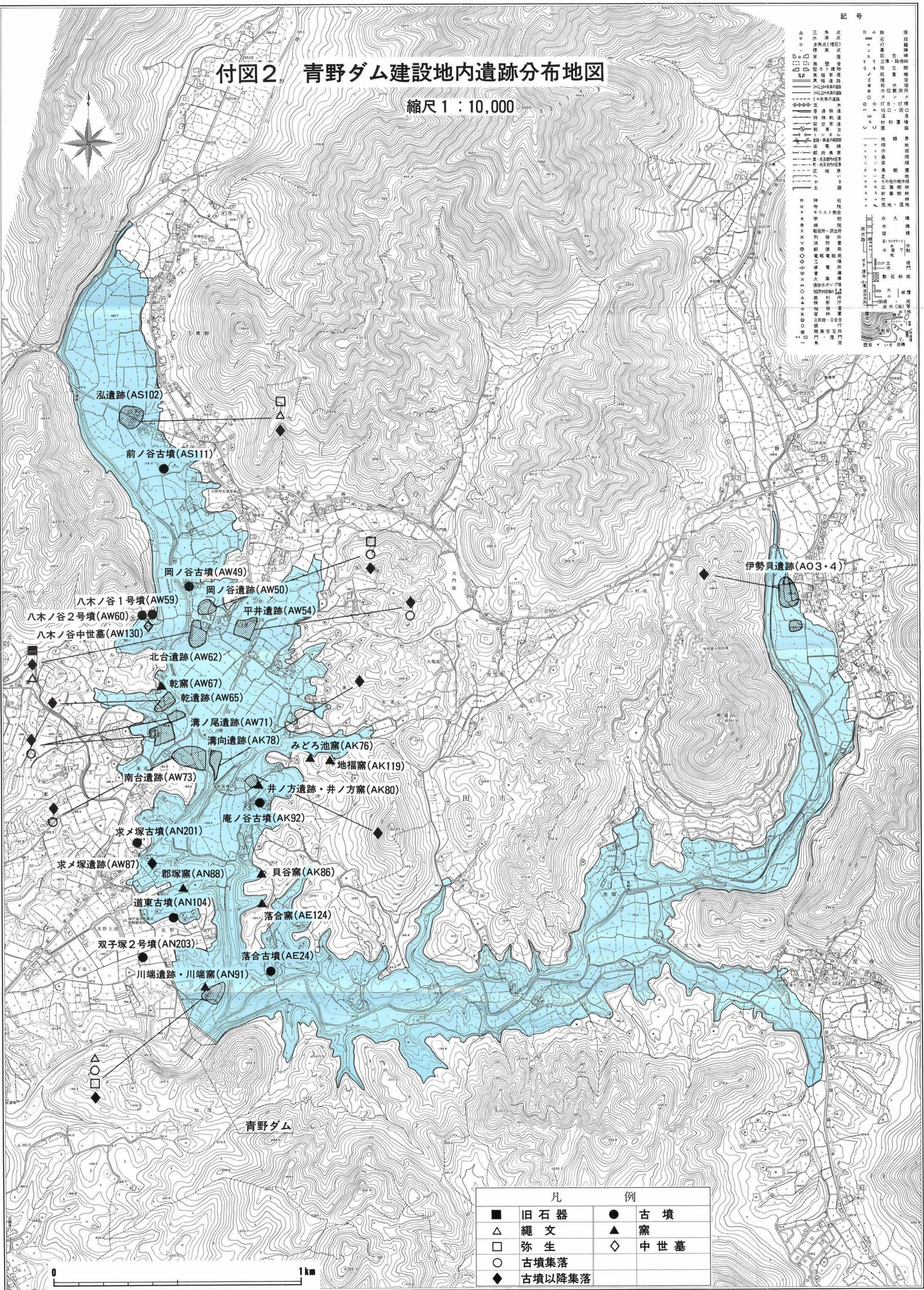
凡 例	
●	古墳
▲	窯
○	散布地

付図2 青野ダム建設地内遺跡分布地図

縮尺 1 : 10,000

記号

- ▲ 点状遺跡 (埋石)
- △ 三角点 (標高)
- 古墳集落
- ◆ 古墳以降集落
- 旧石器
- △ 縄文
- 弥生
- 古墳集落
- ◆ 古墳以降集落
- 古墳
- ▲ 窠
- ◇ 中世墓



凡		例	
■	旧石器	●	古墳
△	縄文	▲	窠
□	弥生	◇	中世墓
○	古墳集落		
◆	古墳以降集落		

0 1km