

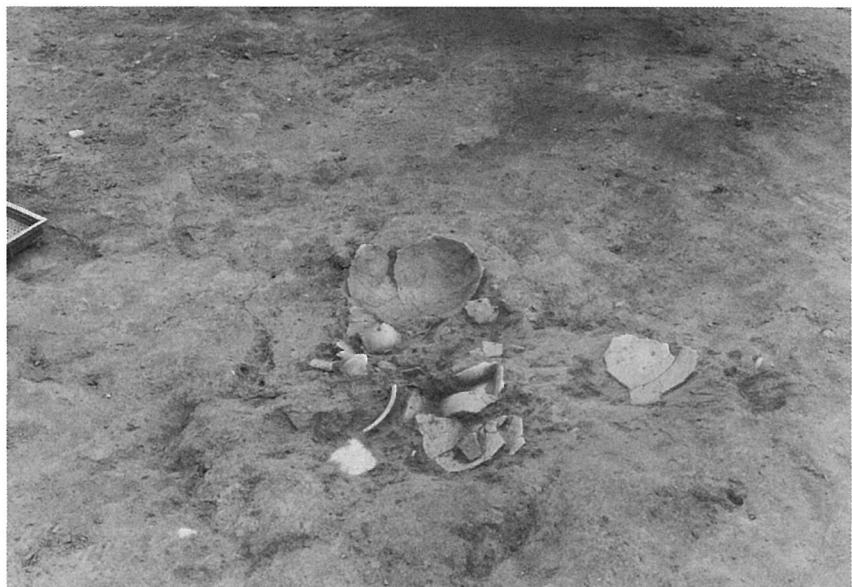
2 D区B-1
土器溜り検出状況



2 D区B-1
土器溜り第2面

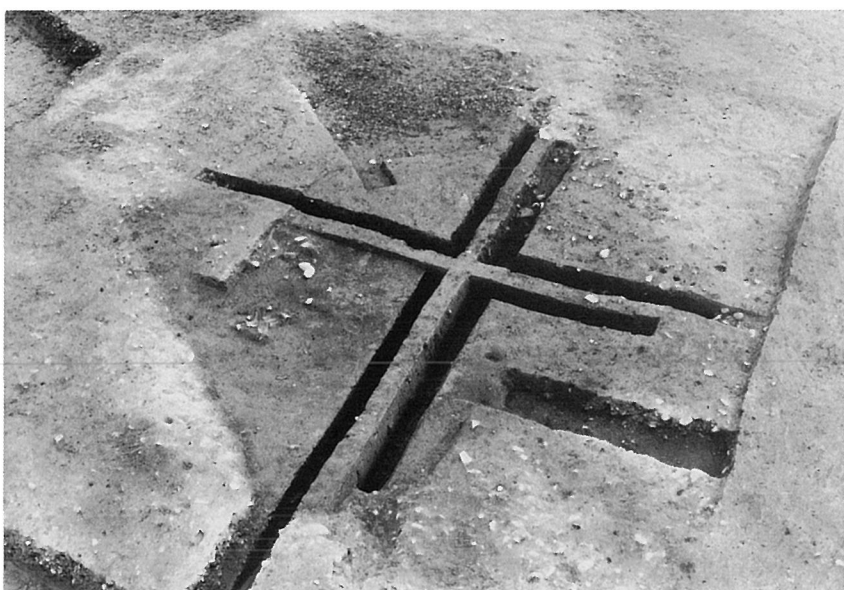


2 D区B-2
土器溜り検出状況

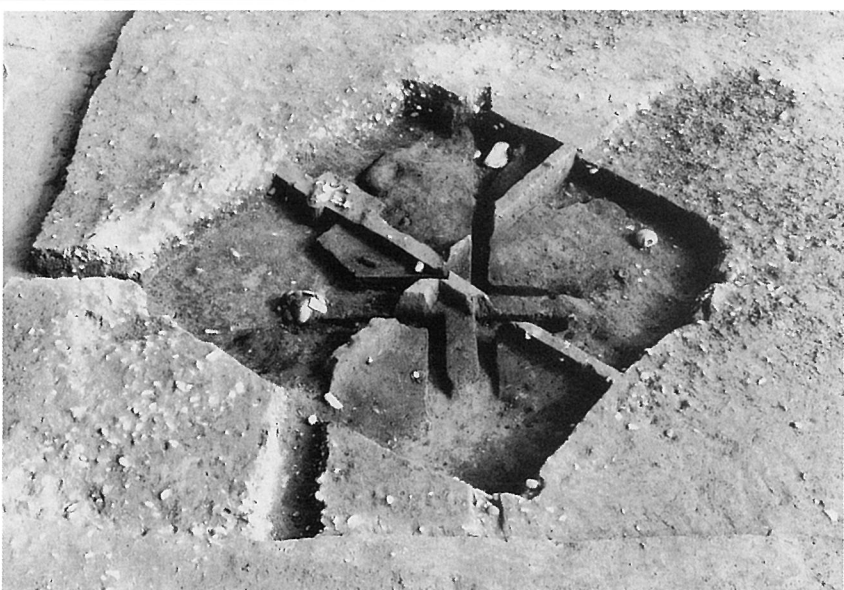




2 D区
竪穴式建物跡検出面
86-7土師器壺出土状況



2 D区
竪穴式建物跡
遺構検出状況



2 D区
竪穴式建物跡埋土中の
焼土検出状況

2 D区
竖穴式建物跡発掘状況

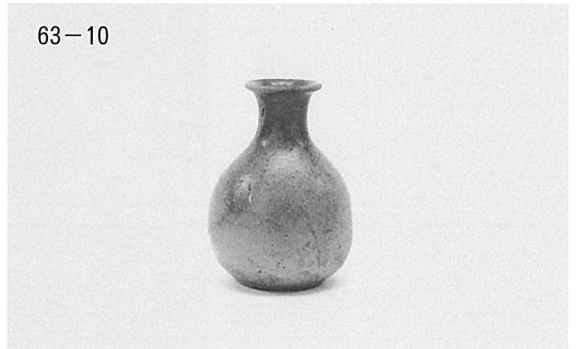
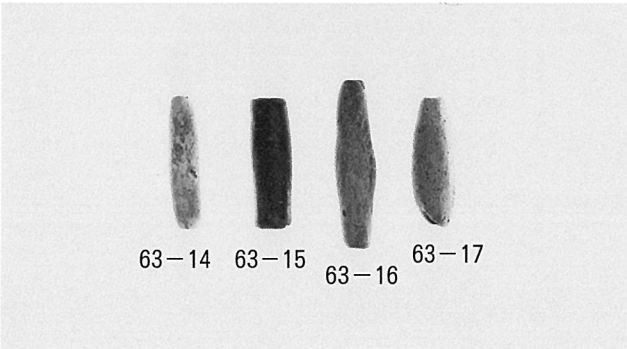
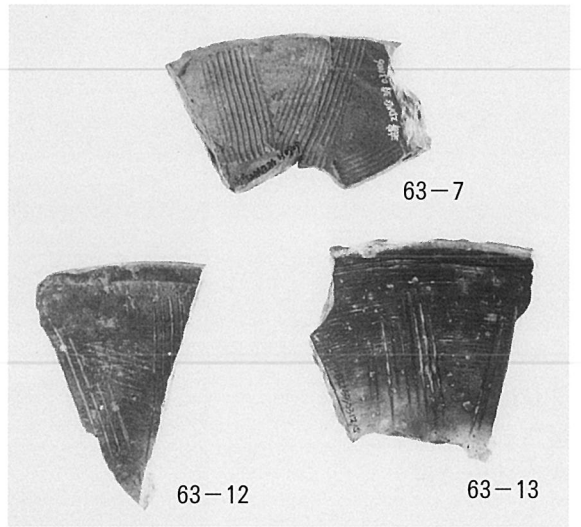
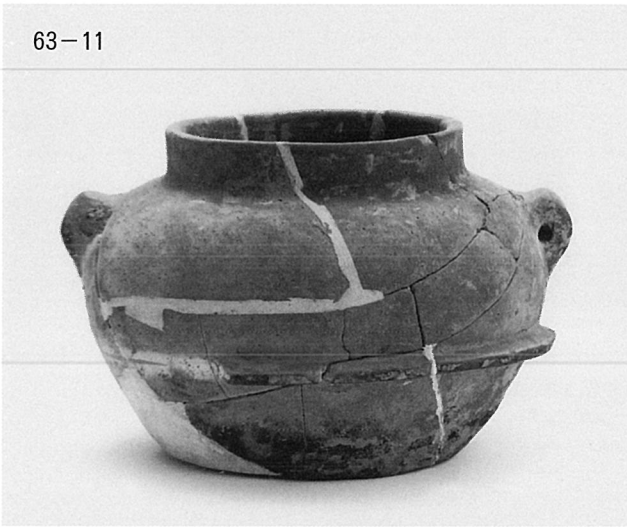


2 D区
竖穴式建物跡
遺物出土状況

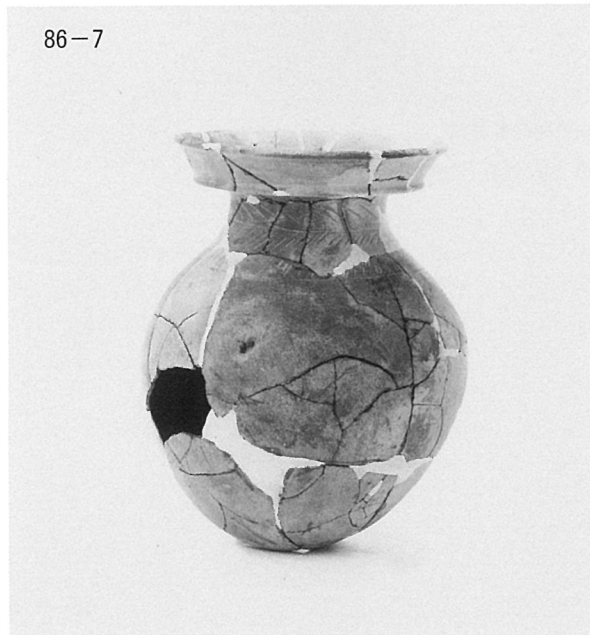
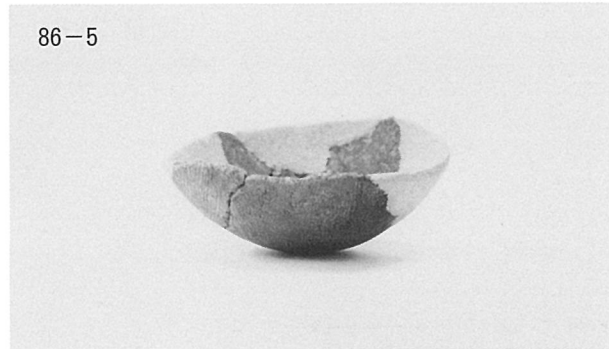
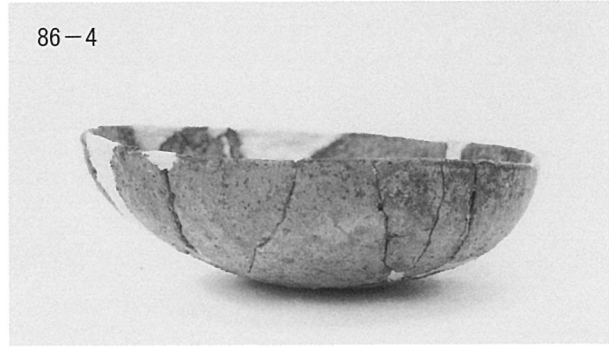


2 D区
竖穴式建物跡
床面検出状況

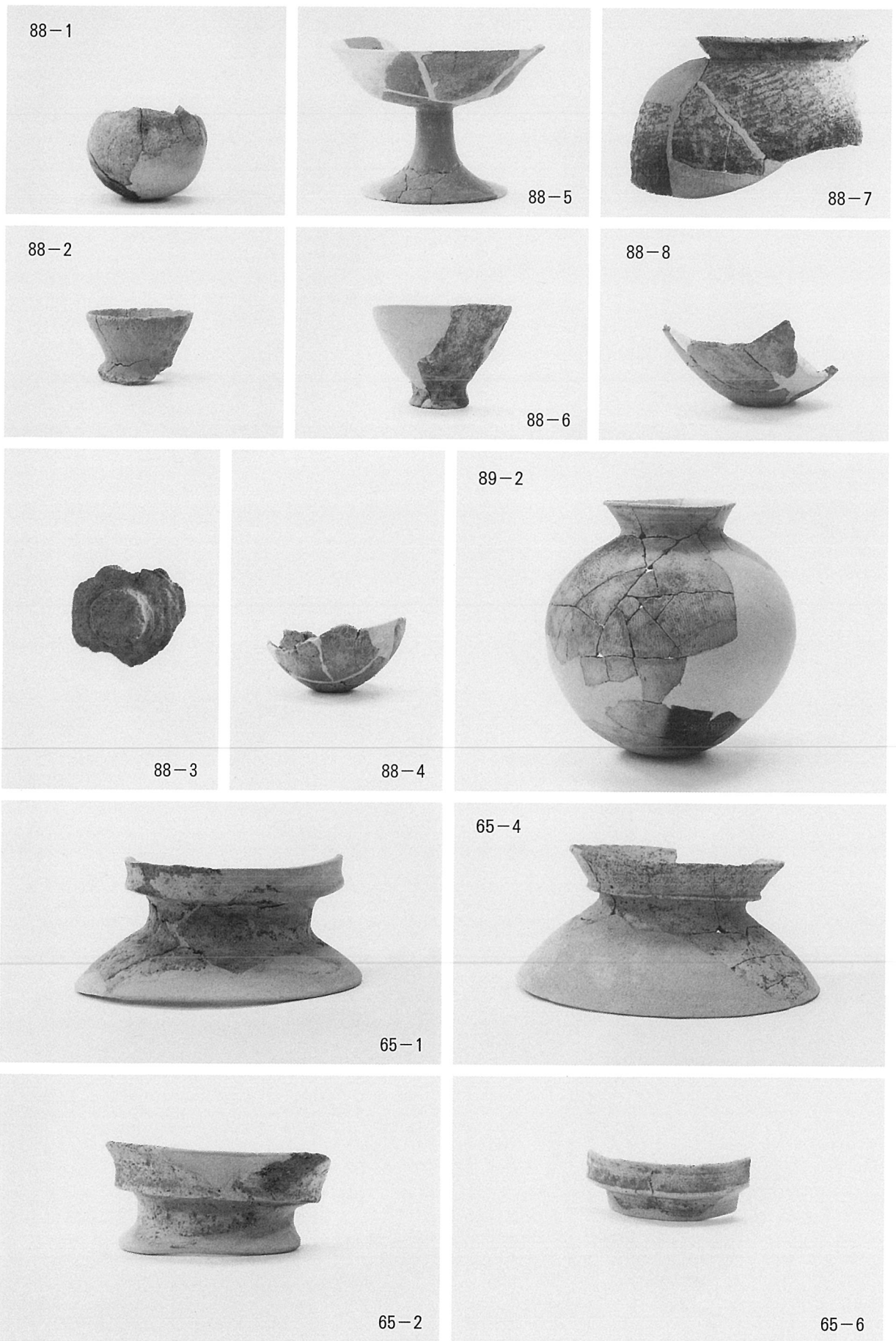




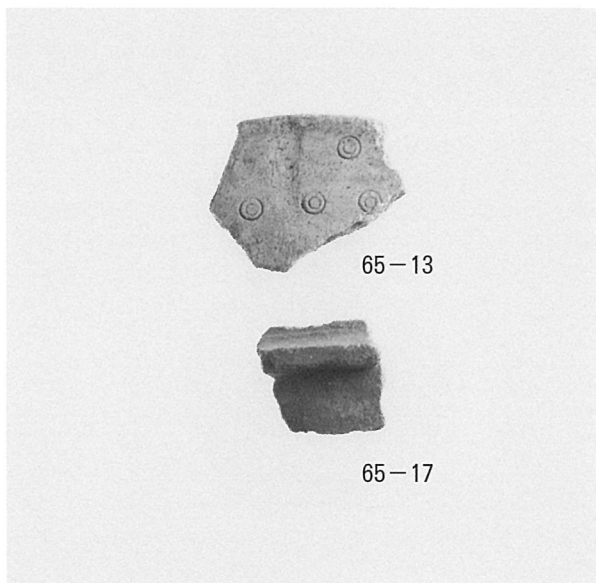
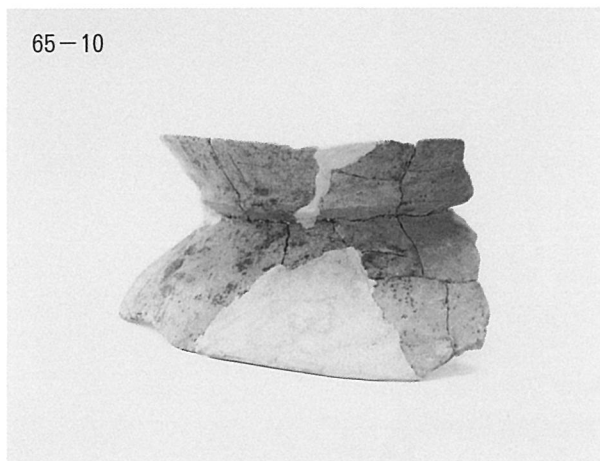
2 D区P 1 出土土師器供膳具 2・3層出土遺物



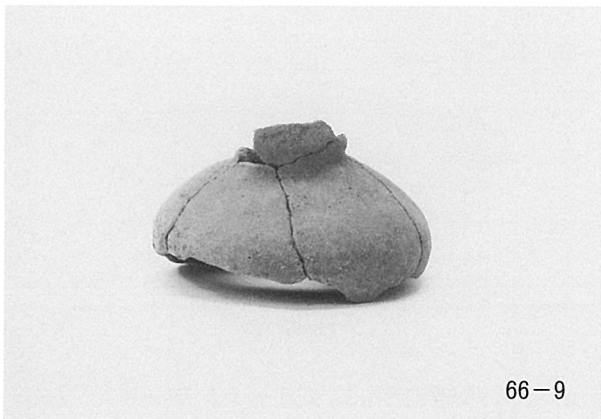
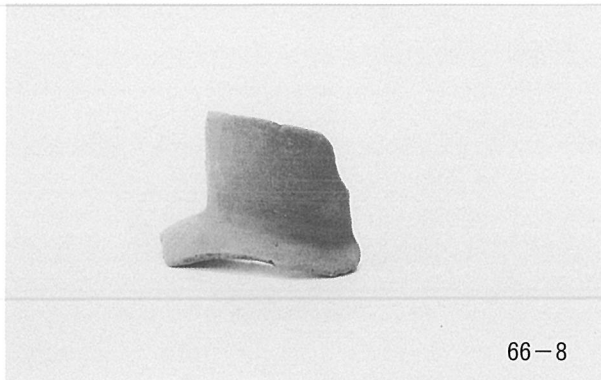
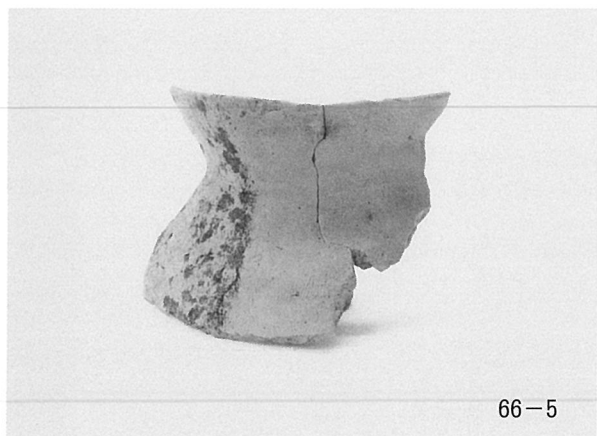
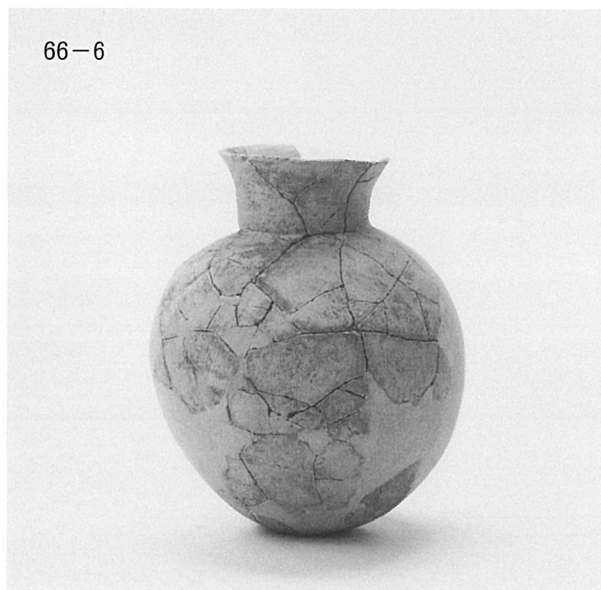
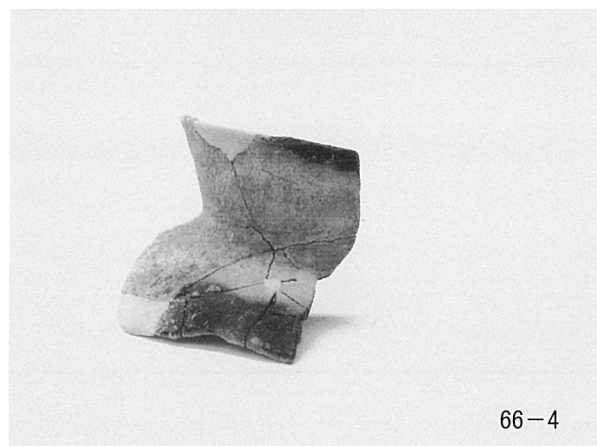
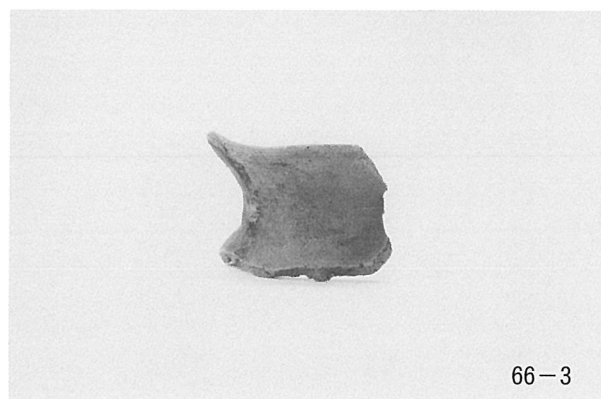
2 D区竖穴式建物跡出土遺物 土師器



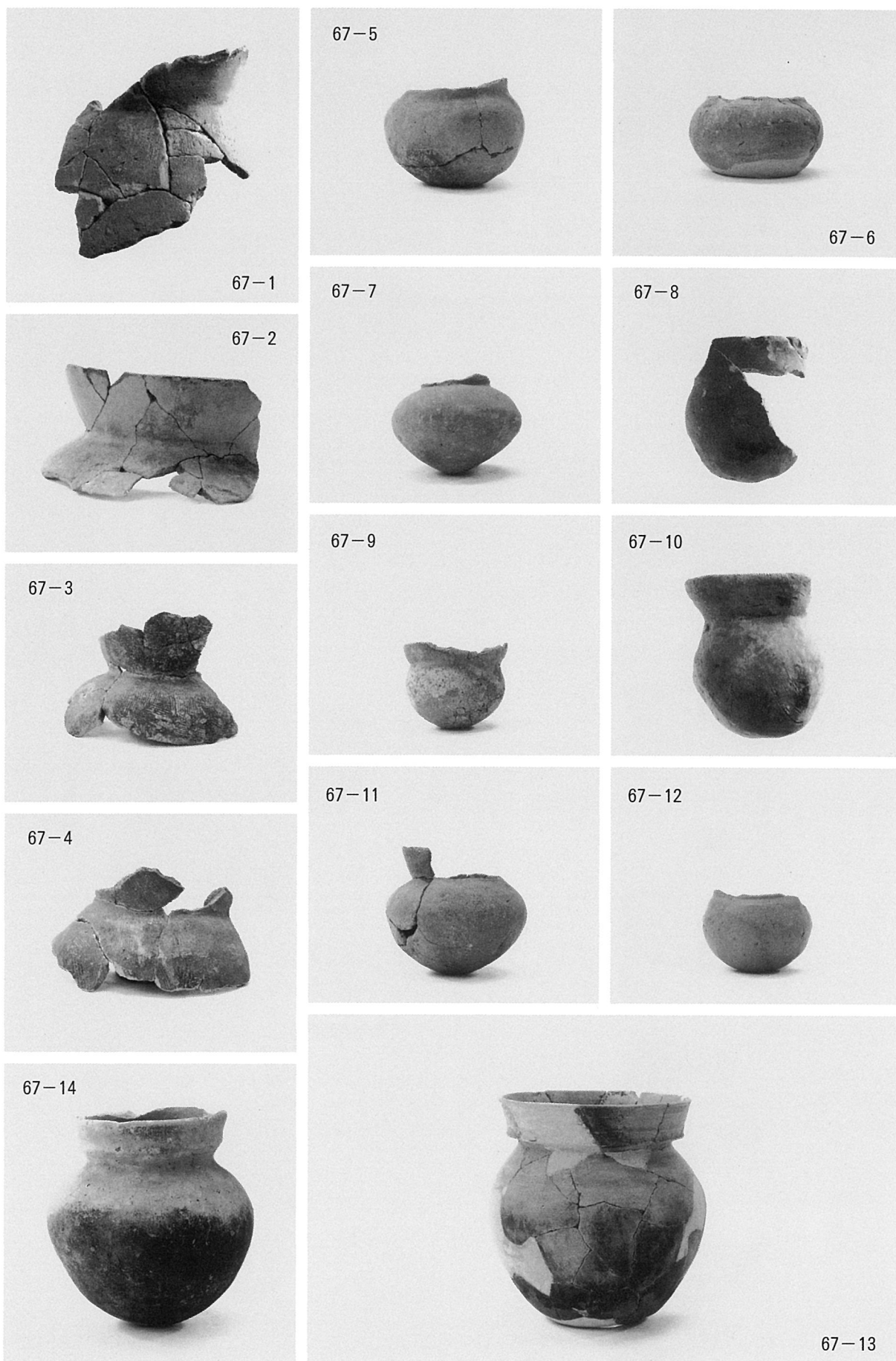
2 D区土器溜りB-1・B-2出土遺物 土師器 2 D区4層出土遺物 土師器



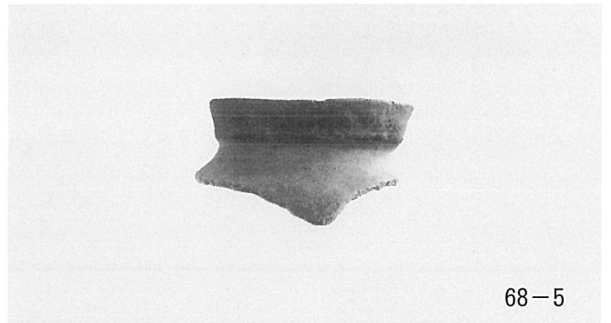
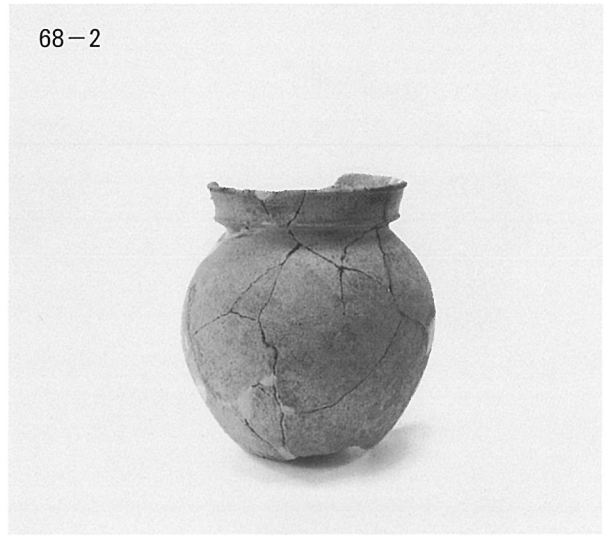
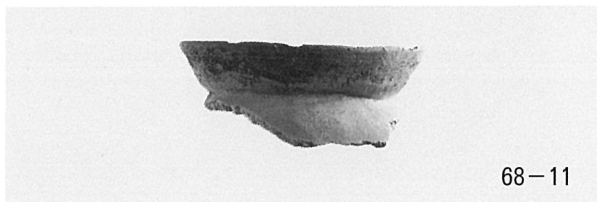
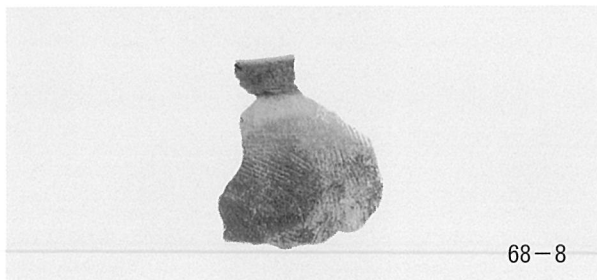
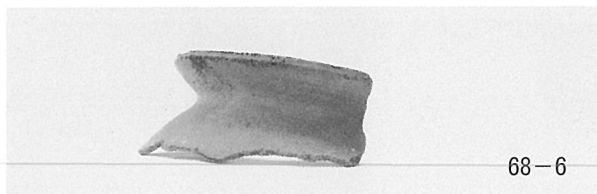
2 D区 4層出土遺物 土師器甕、壺、高坏、器台



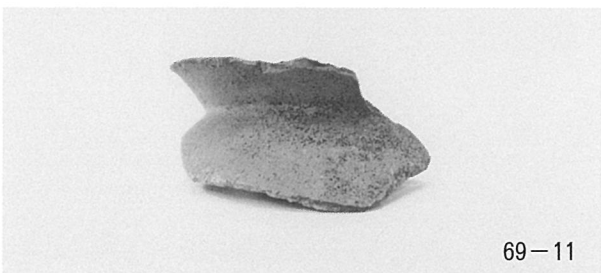
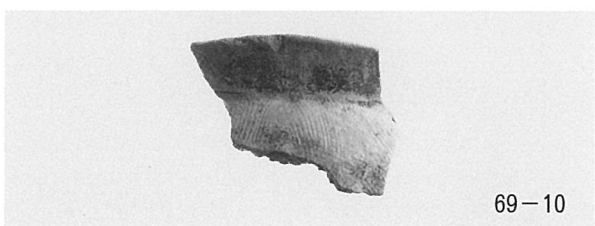
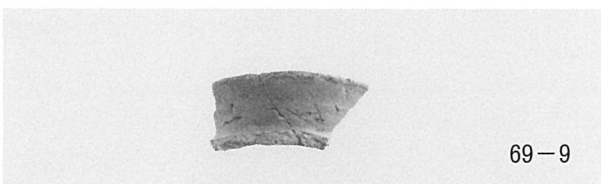
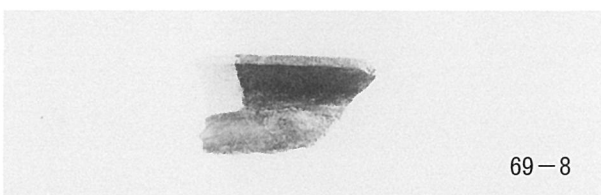
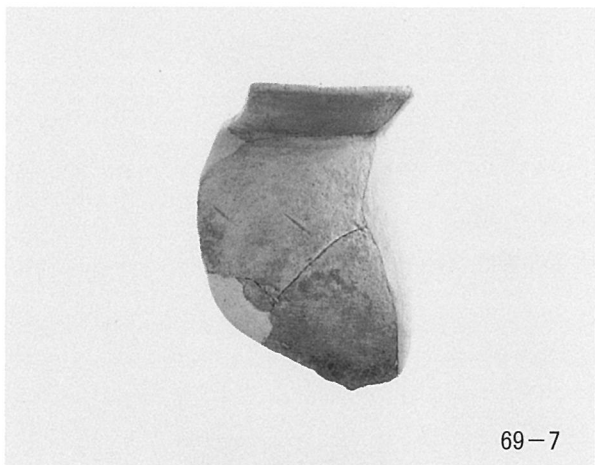
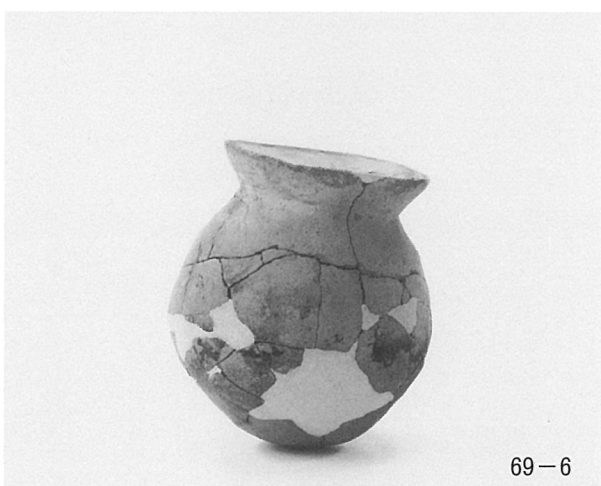
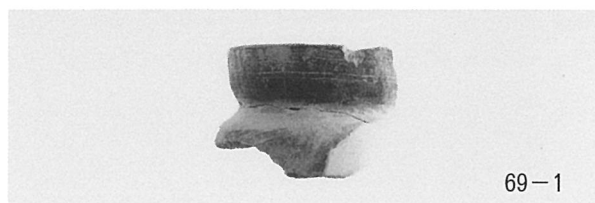
2 D区 4層出土遺物 土師器壺



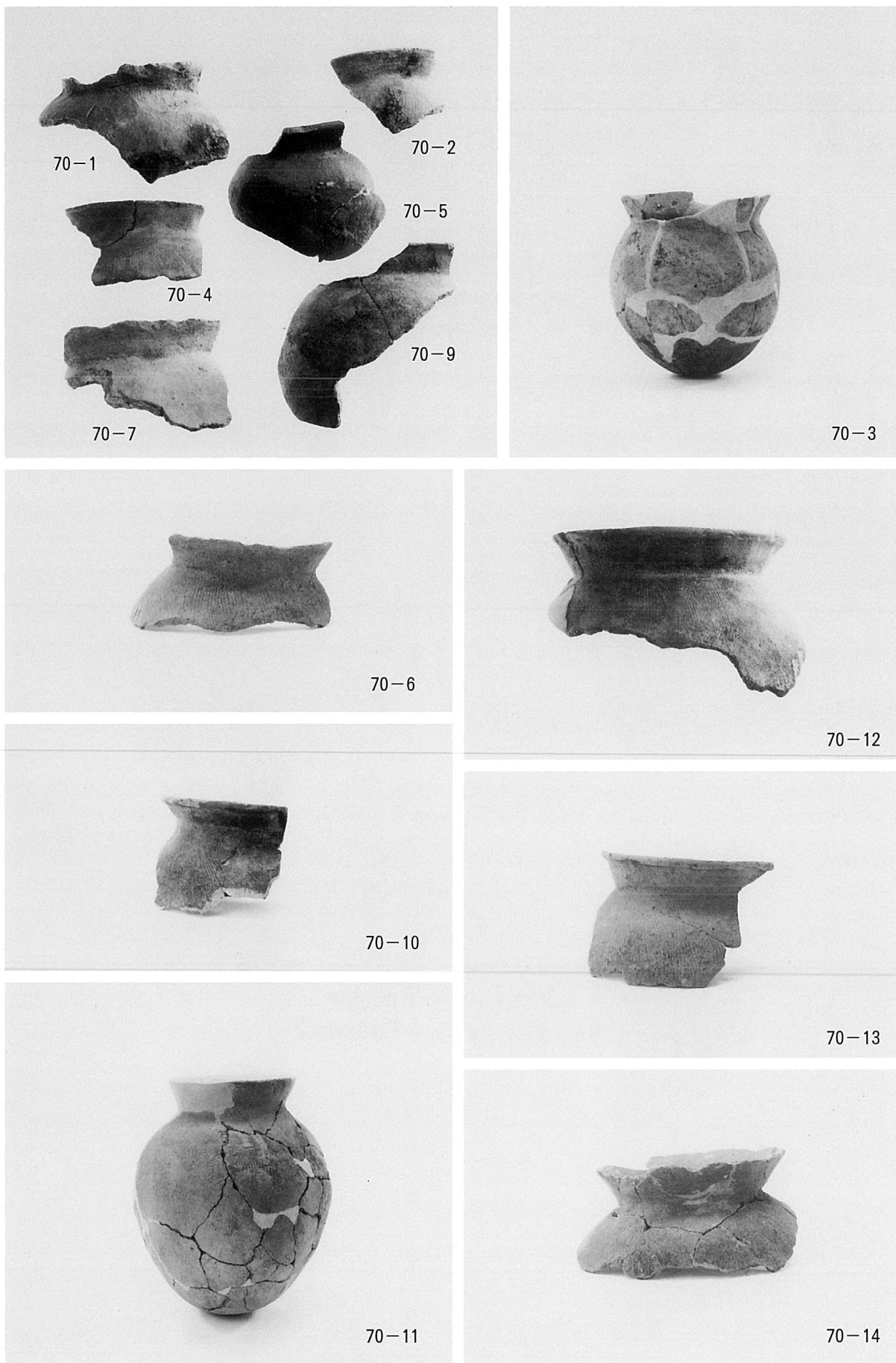
2 D区 4層出土遺物 土師器甕、壺



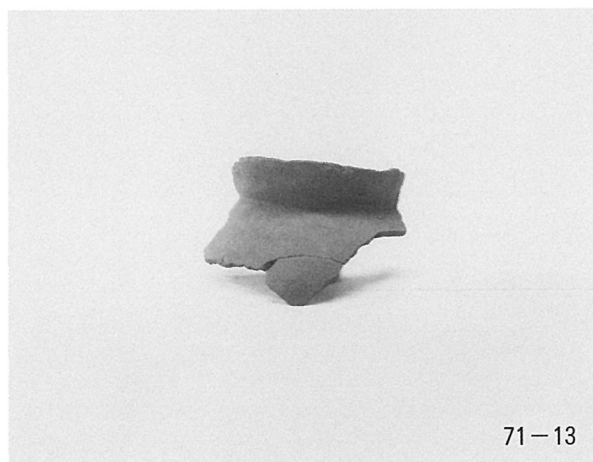
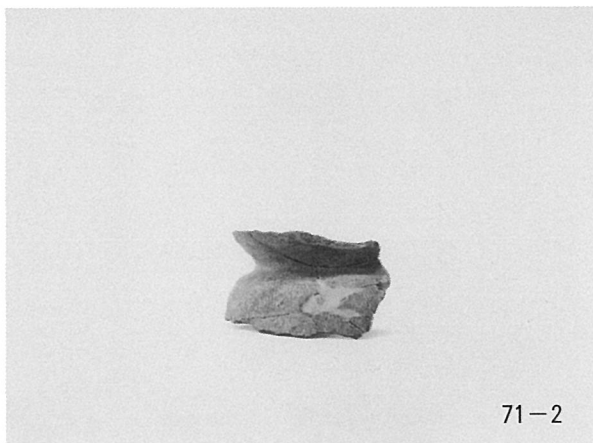
2 D区 4層出土遺物 土師器甕、壺



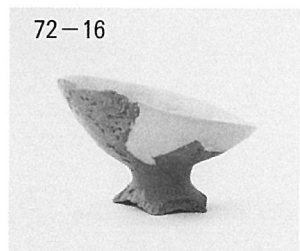
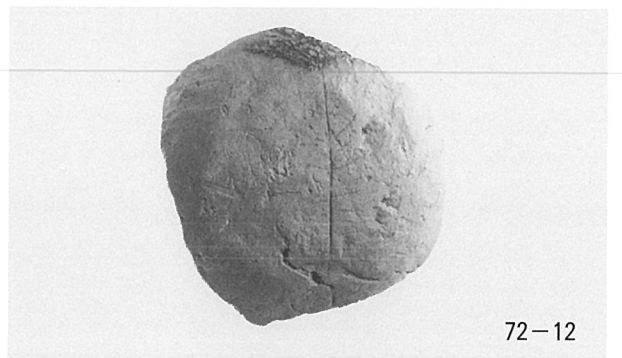
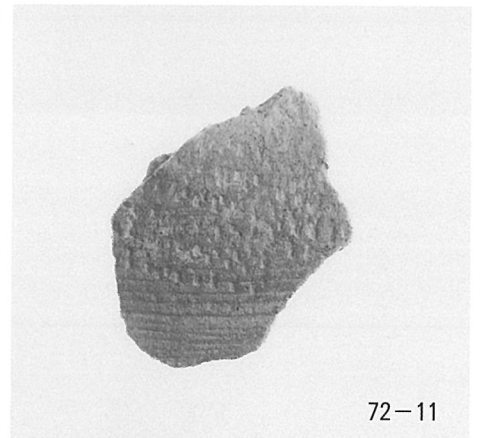
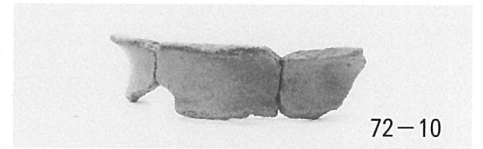
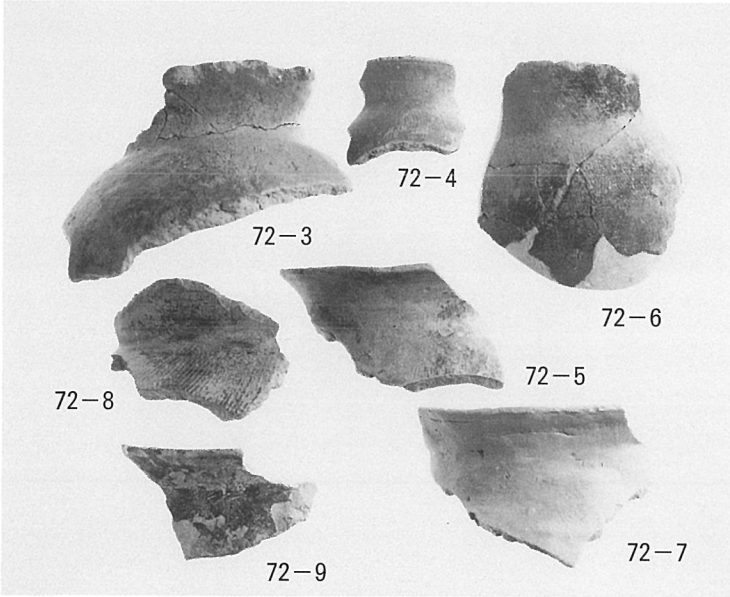
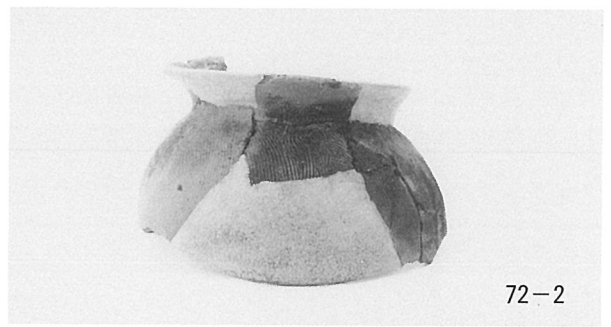
2 D区 4層出土遺物 土師器甕



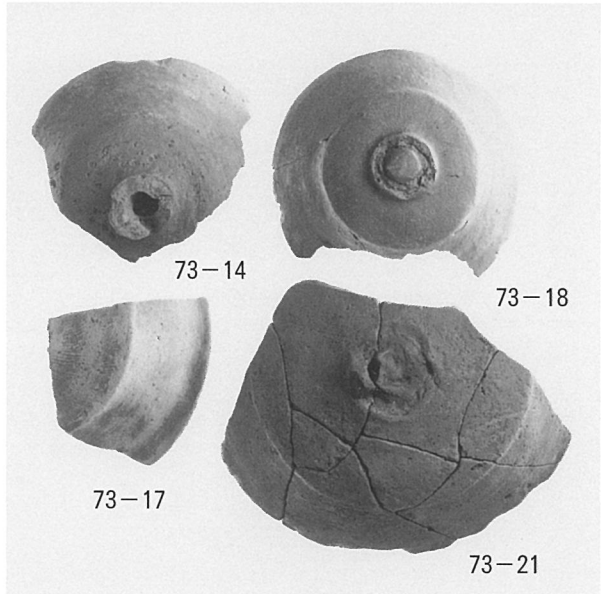
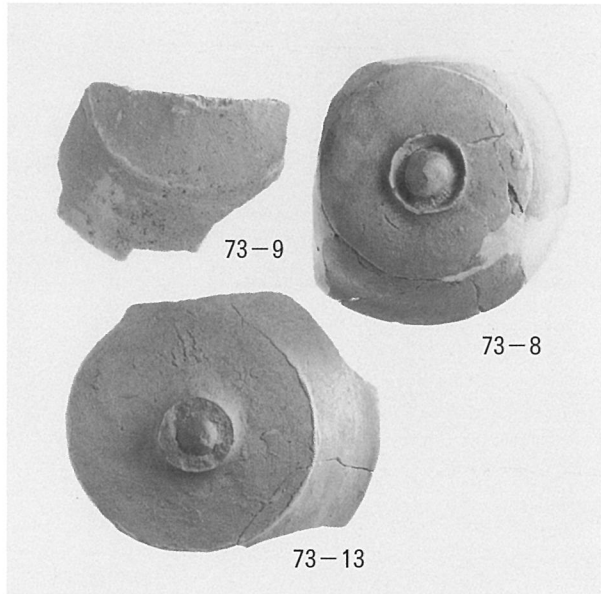
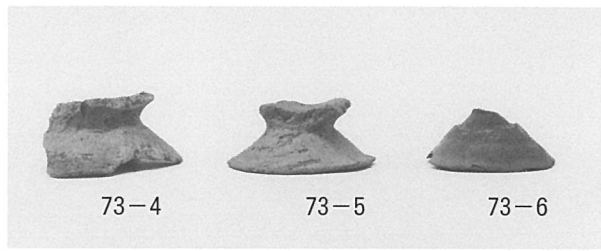
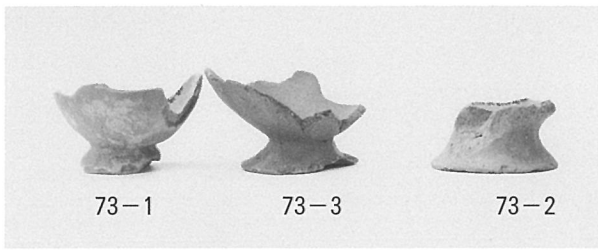
2 D区 4層出土遺物 土師器甕



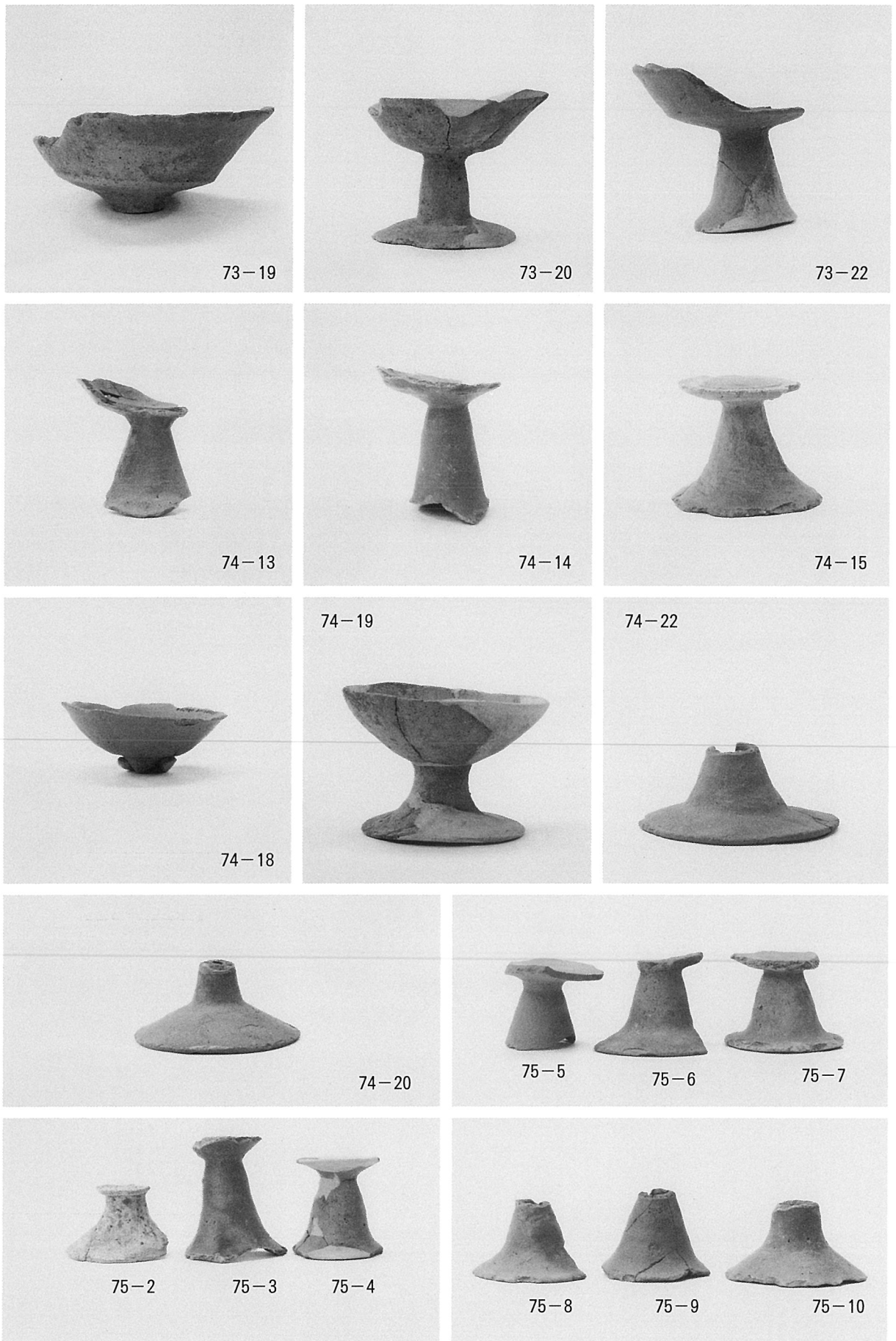
2 D区 4層出土遺物 土師器甕



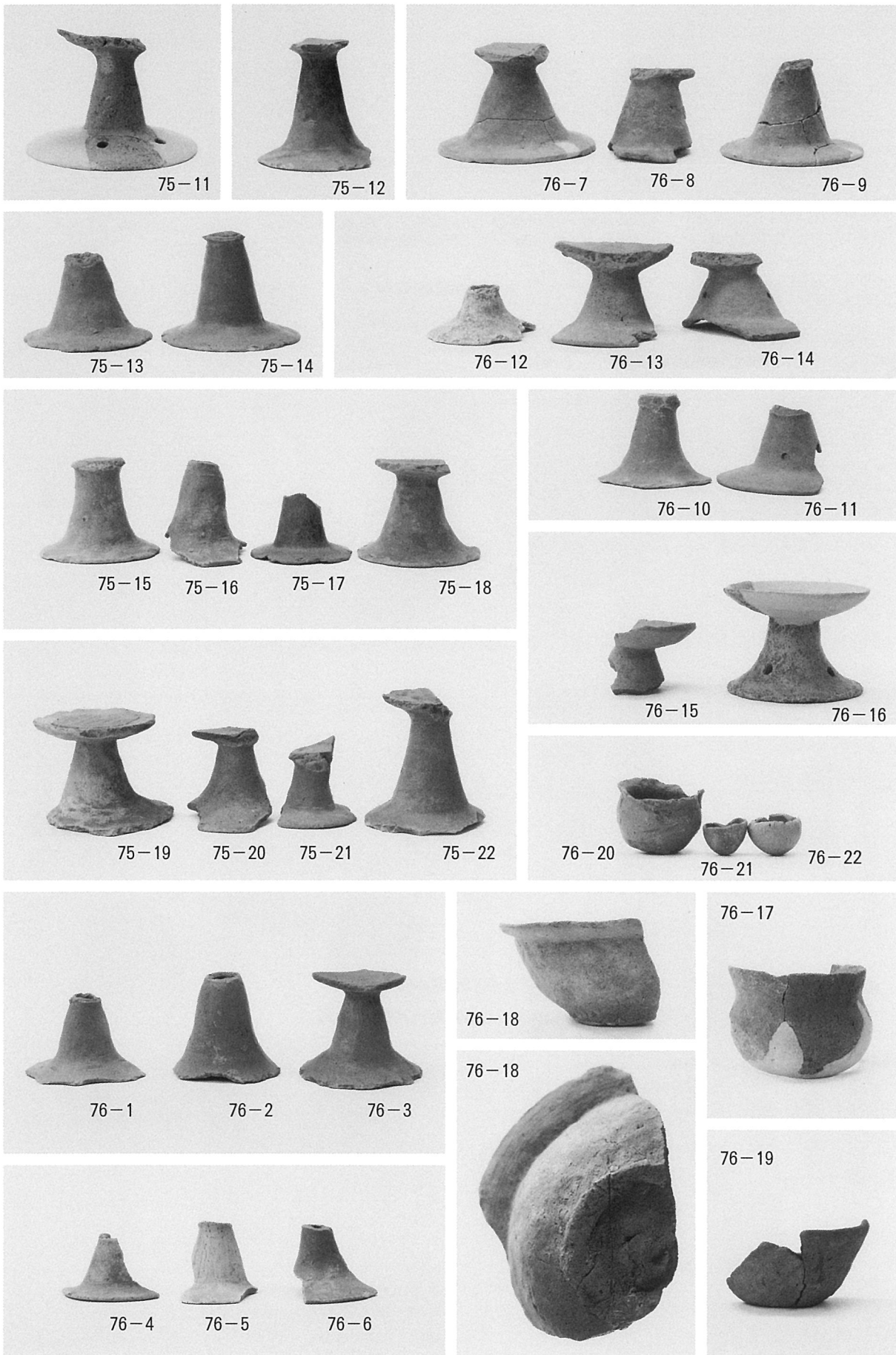
2 D区 4層出土遺物 土師器甕、壺、低脚坏、鉢



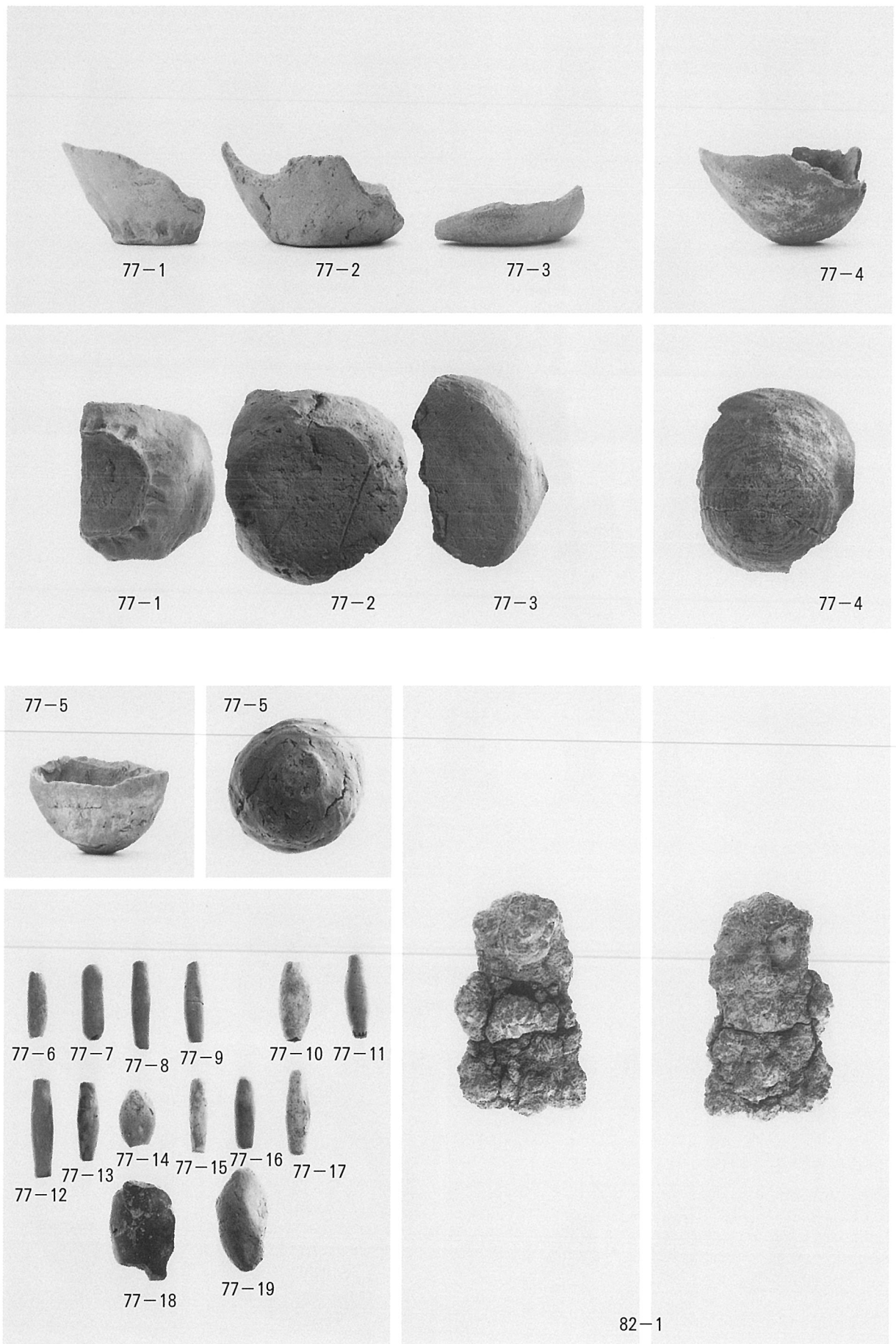
2 D区 4 層出土遺物 土師器低脚坏、高坏



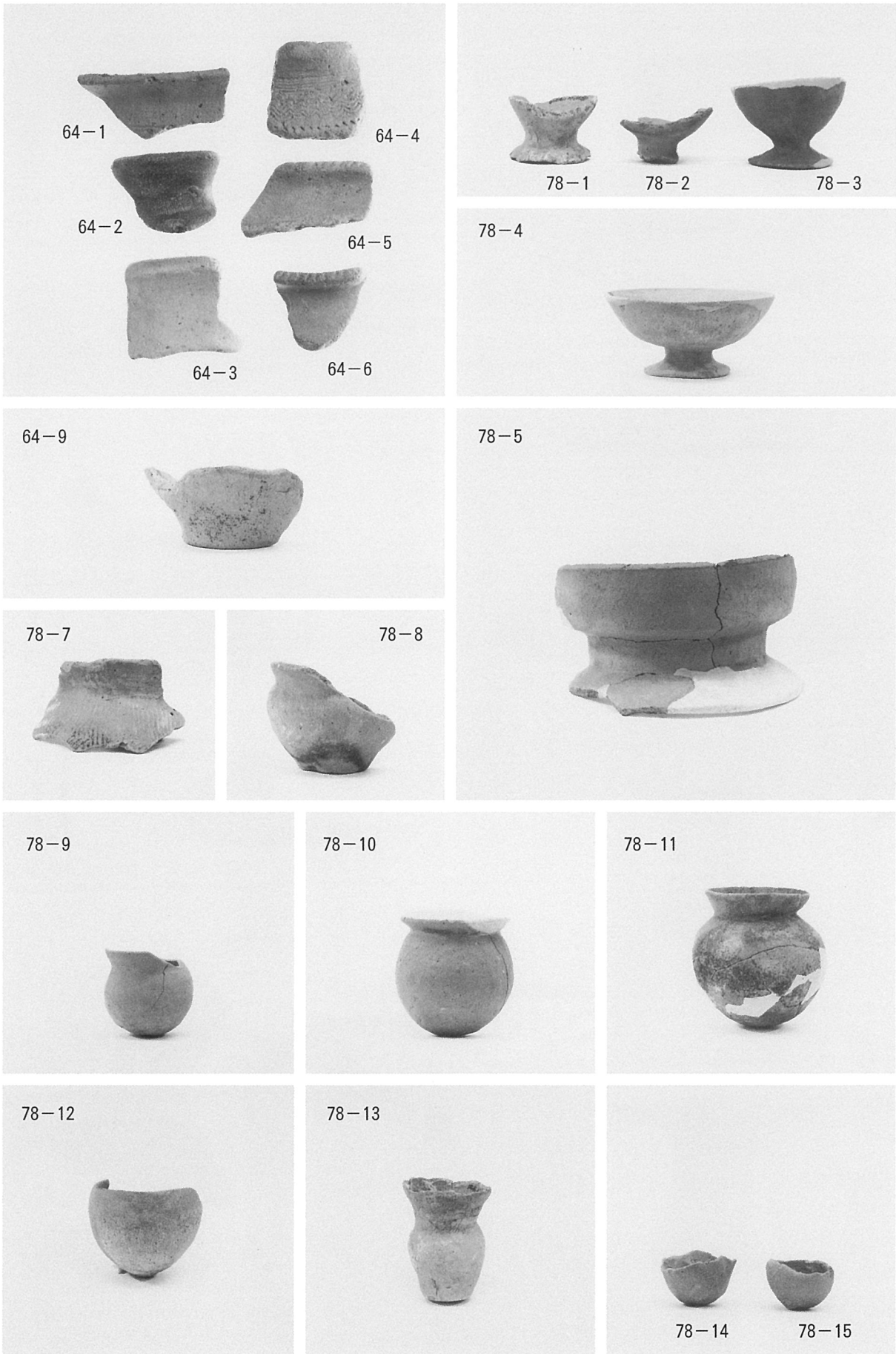
2 D区 4 層出土遺物 土師器高坏



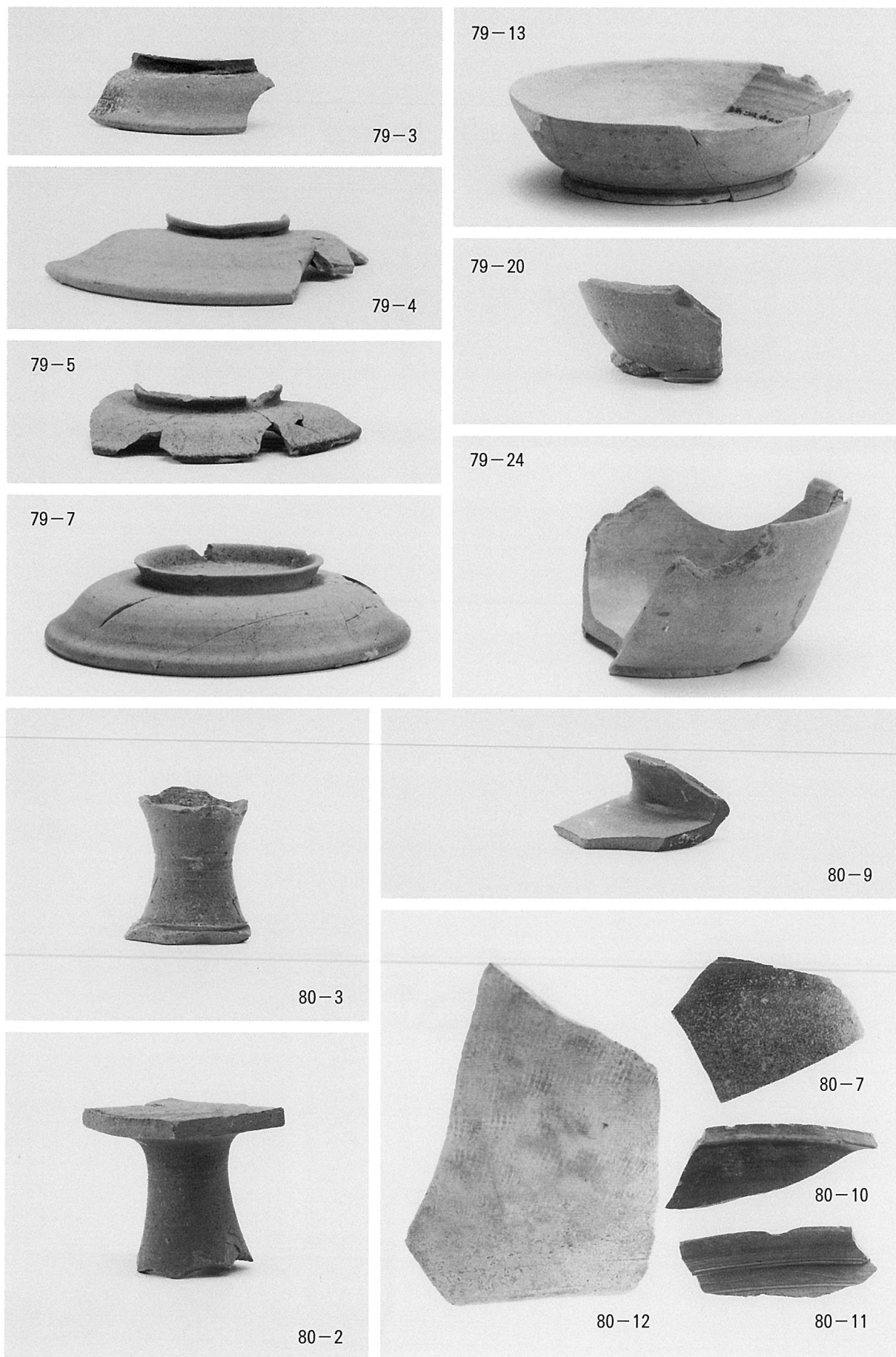
2 D区 4 層出土遺物 土師器高坏、鉢 手捏土器



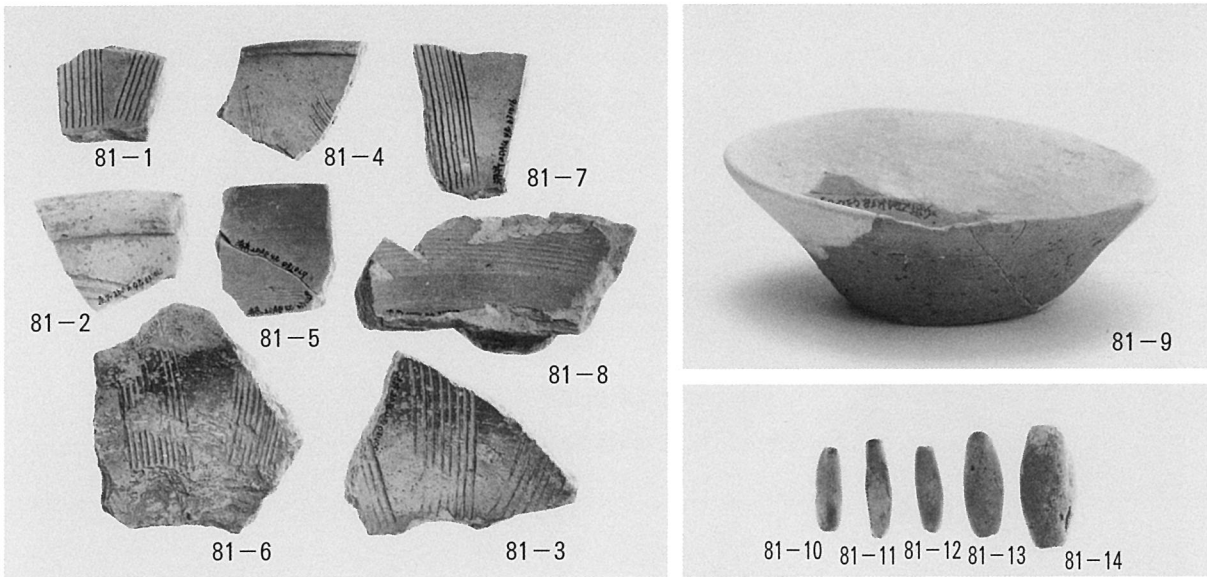
2 D区 4層出土遺物 土師器鉢 手捏土器 土錘 鉄斧



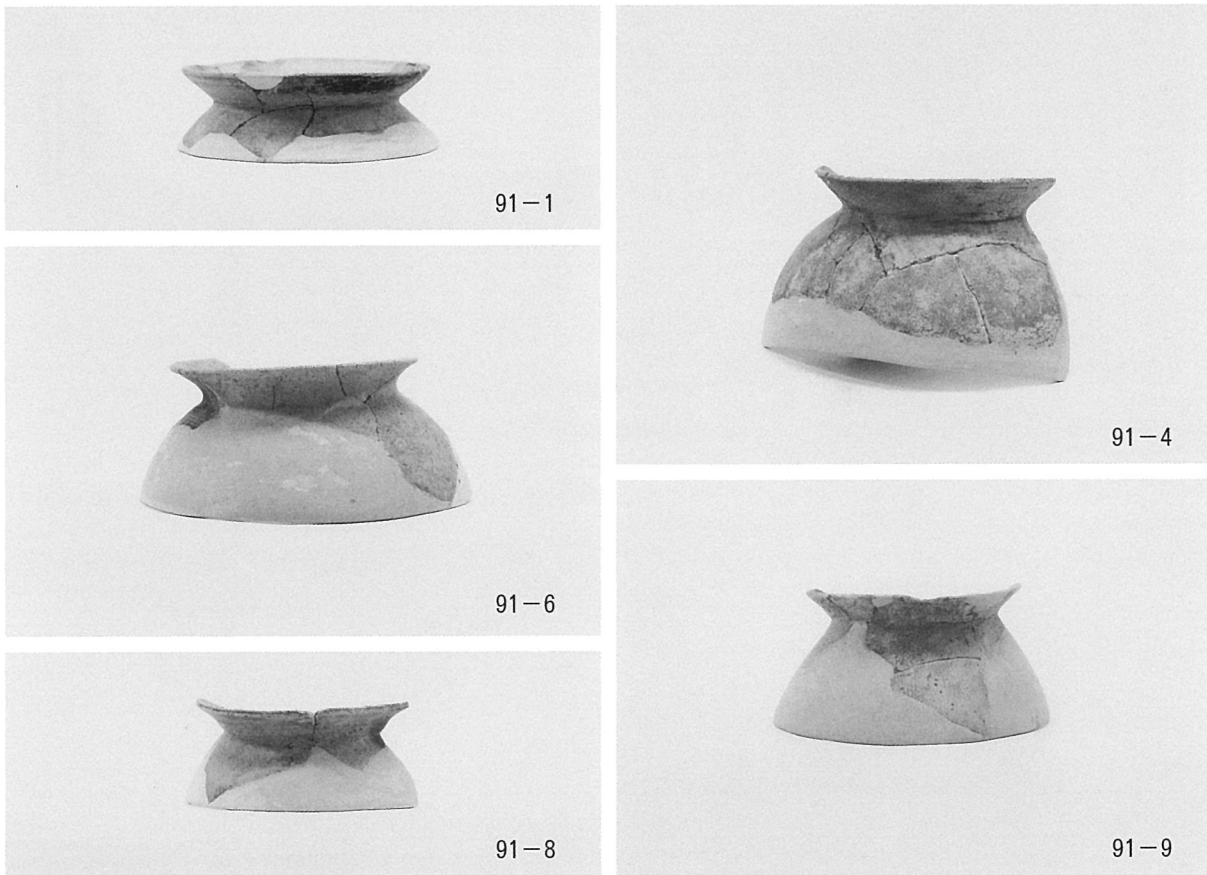
2 D区 4層出土遺物 弥生土器 土師器壺、低脚坏、鉢、手捏土器



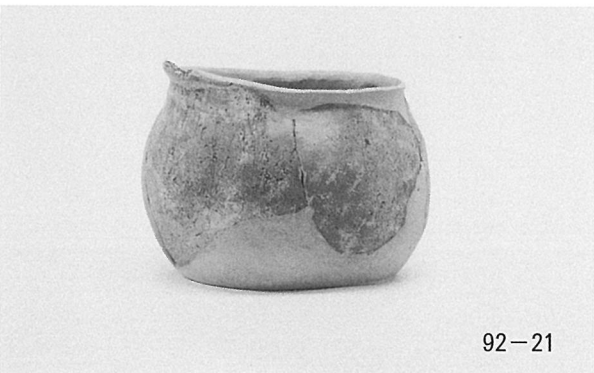
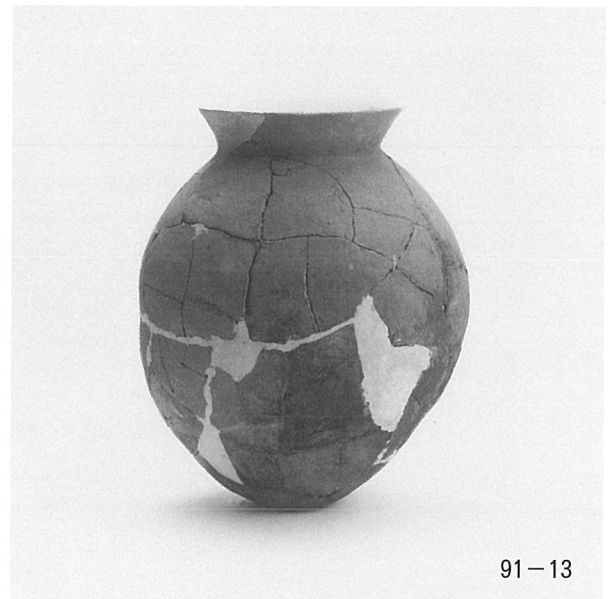
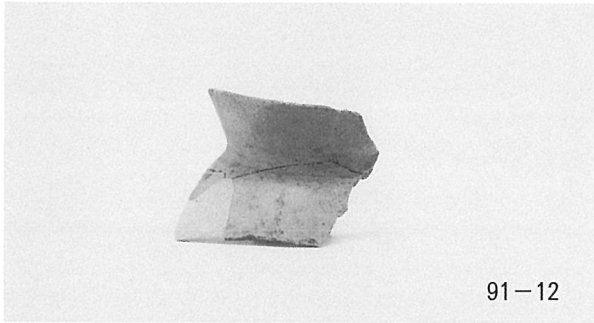
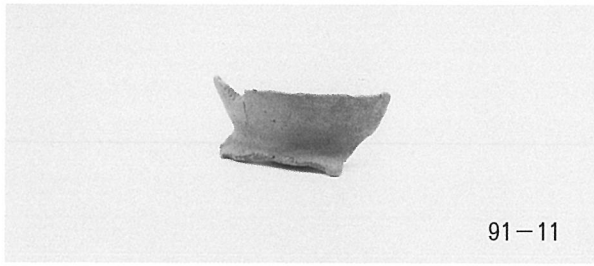
2 D区 4層出土遺物 須惠器蓋坏、高坏、甕、壺



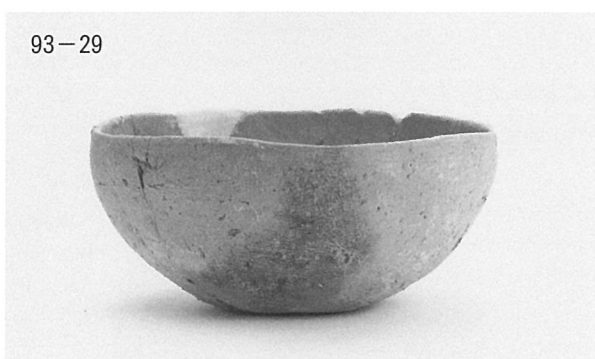
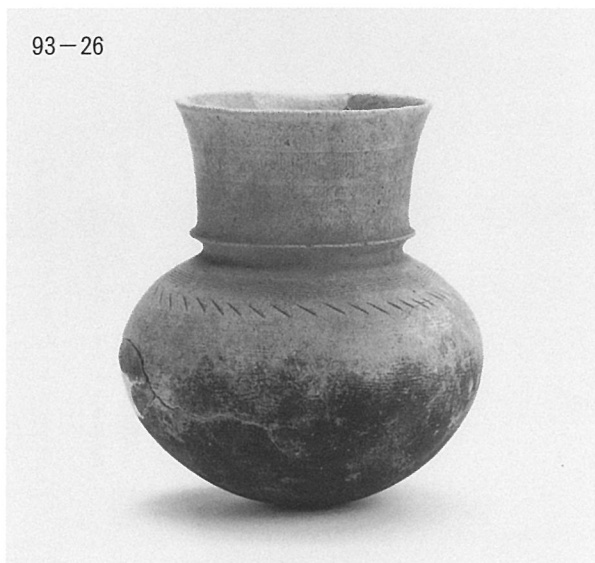
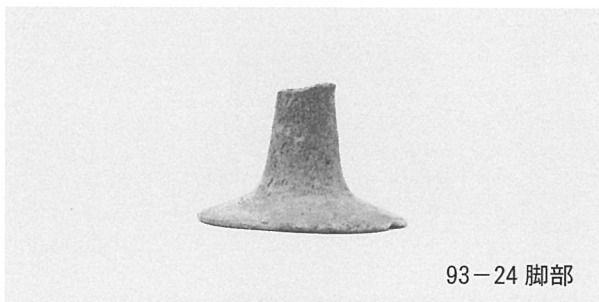
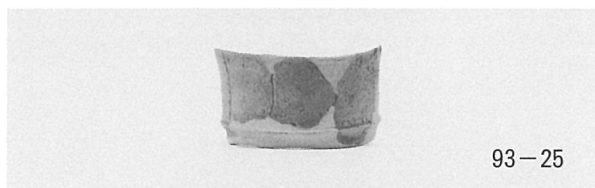
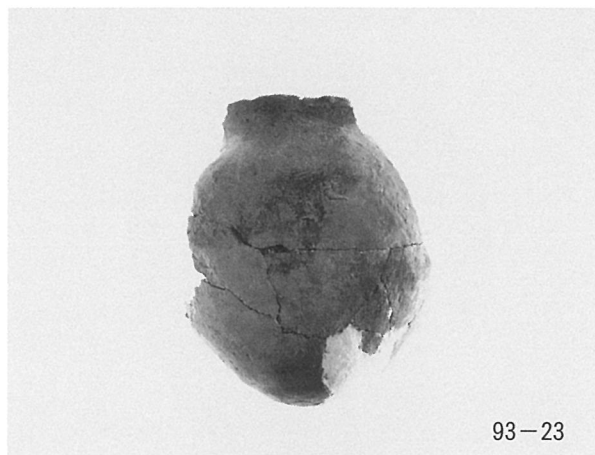
2 D区 4層出土遺物 陶器播鉢 瓦質播鉢 土師器供膳具 土錘、土製支脚



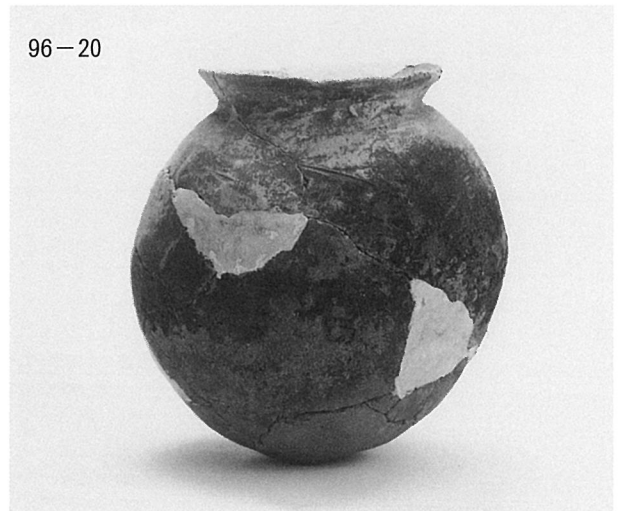
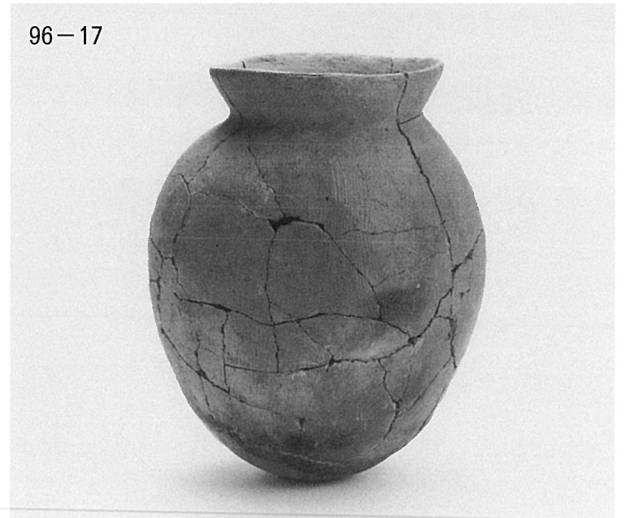
2 D区 5層出土遺物 土師器甕



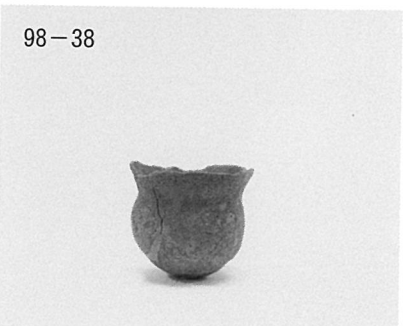
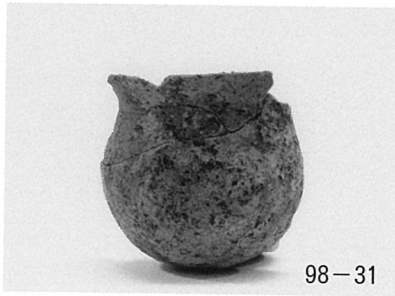
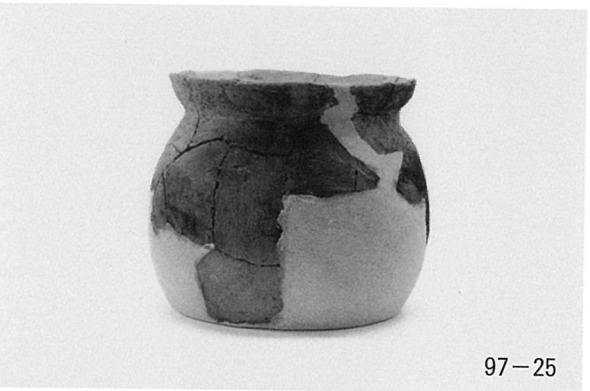
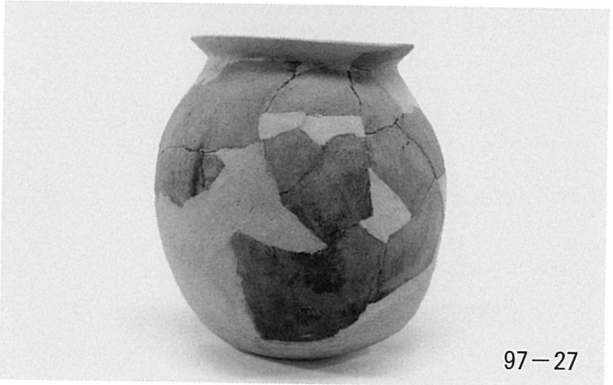
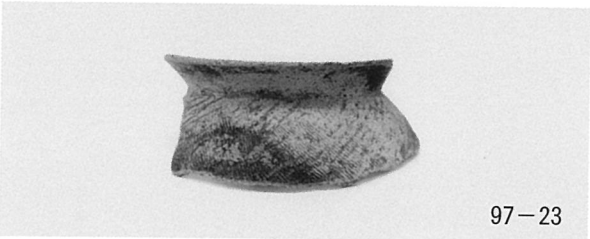
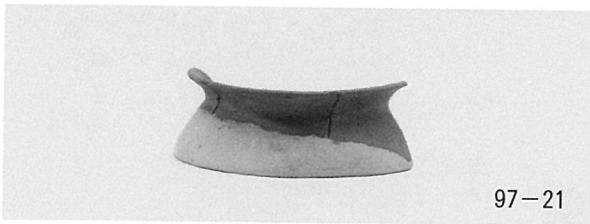
2 D区 5層出土遺物 土師器甕、壺



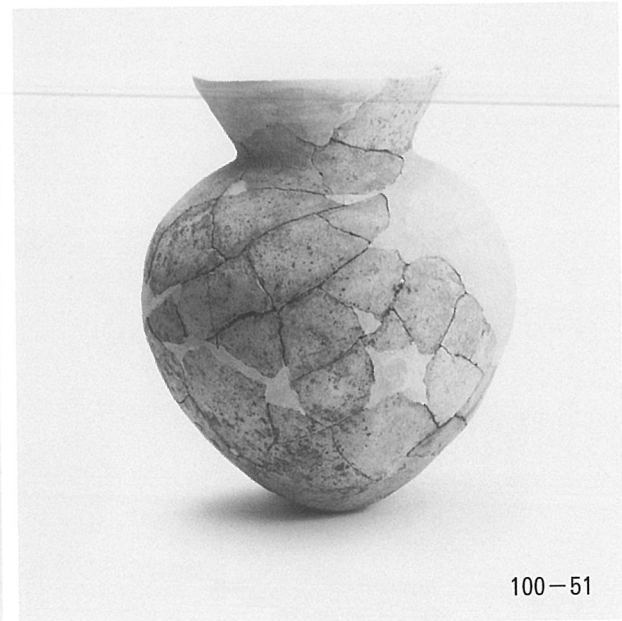
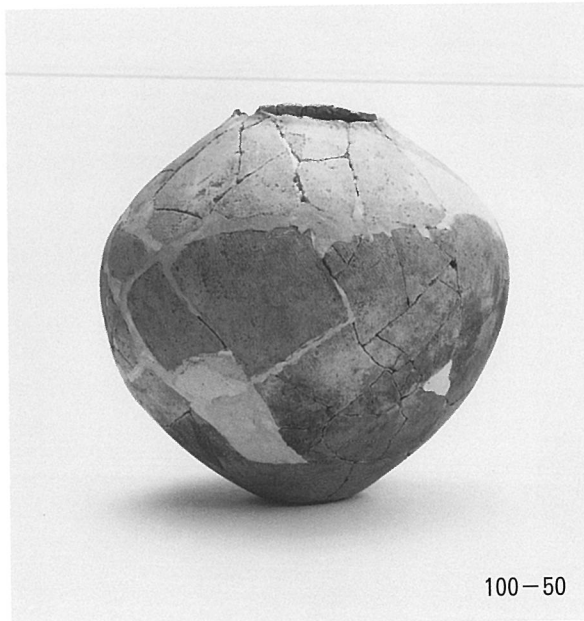
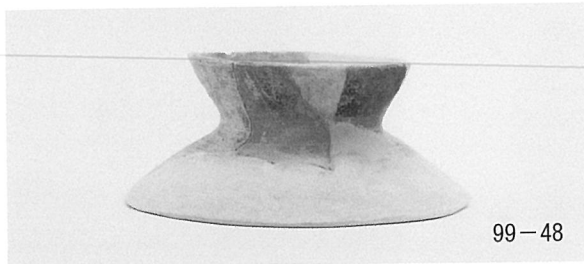
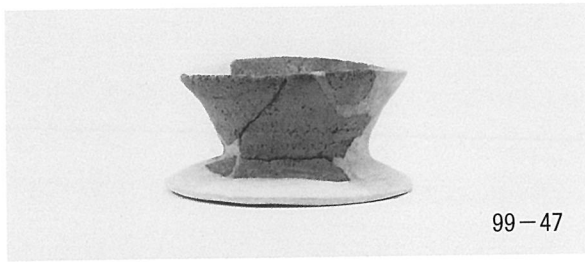
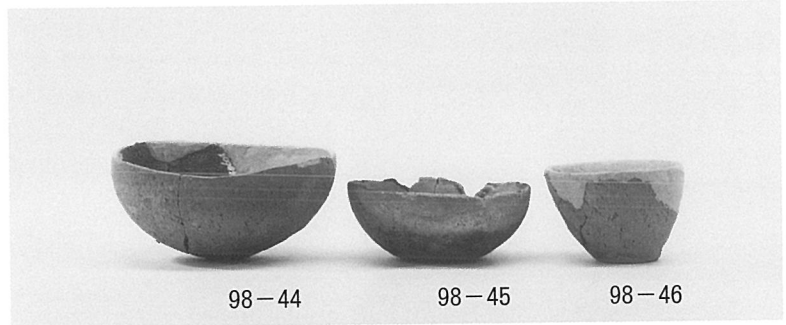
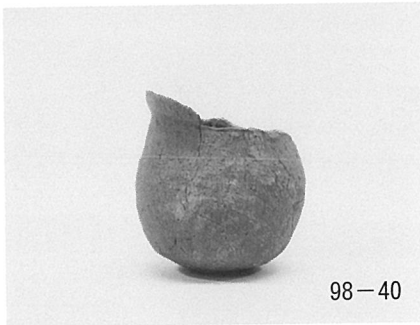
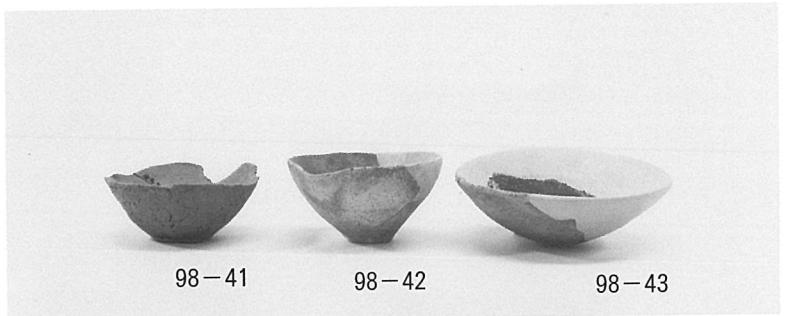
2 D区 5層出土遺物 土師器甕、壺、高坏、器台、鉢



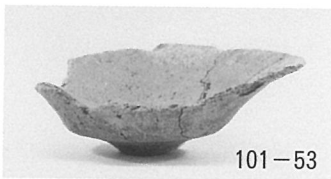
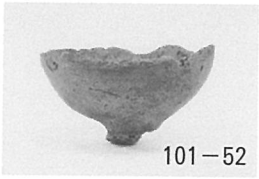
2 D区 5 層出土遺物 弥生土器甕、壺 土師器甕、壺



2 D区 5層出土遺物 土師器甕、壺



2 D区 5層出土遺物 土師器壺、鉢



2 D区 5 層出土遺物 土師器高坏、低脚坏

102-62



102-63



102-64



102-65



102-66



102-67



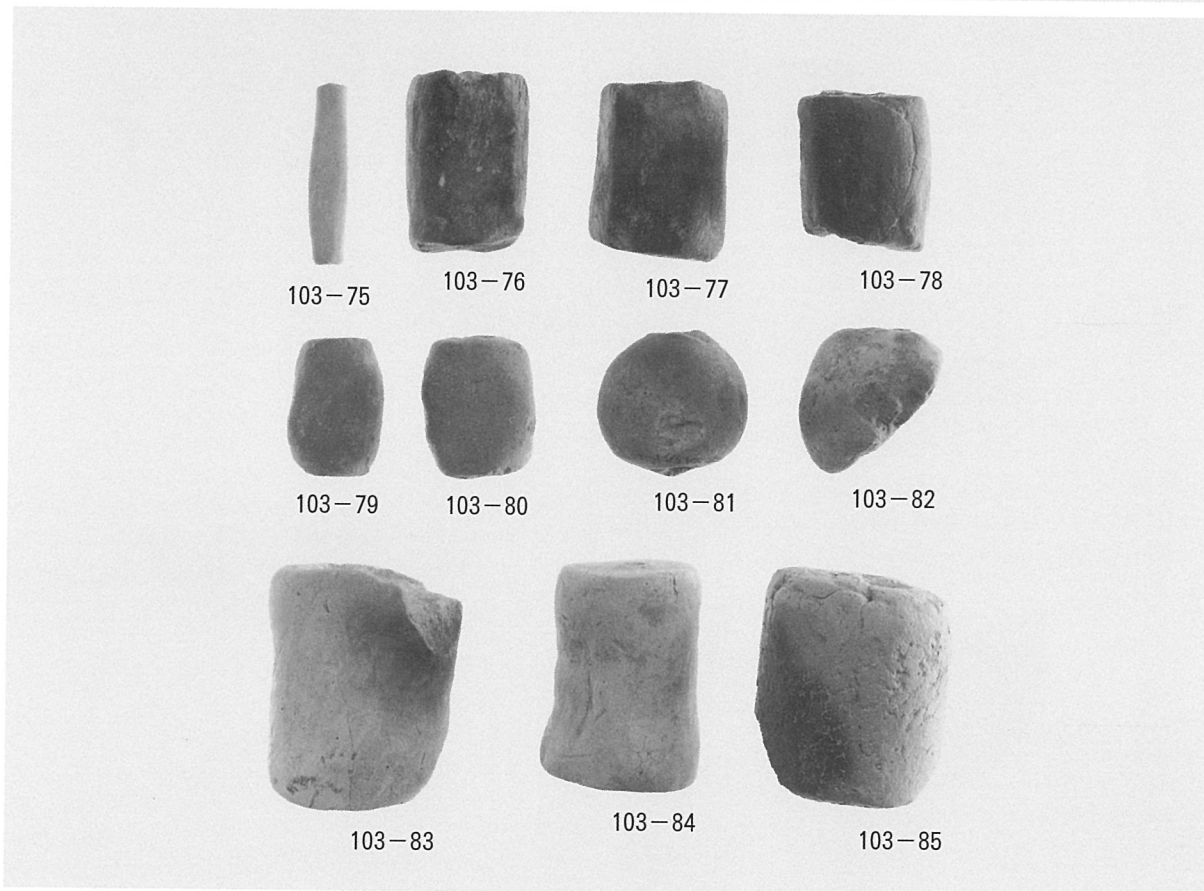
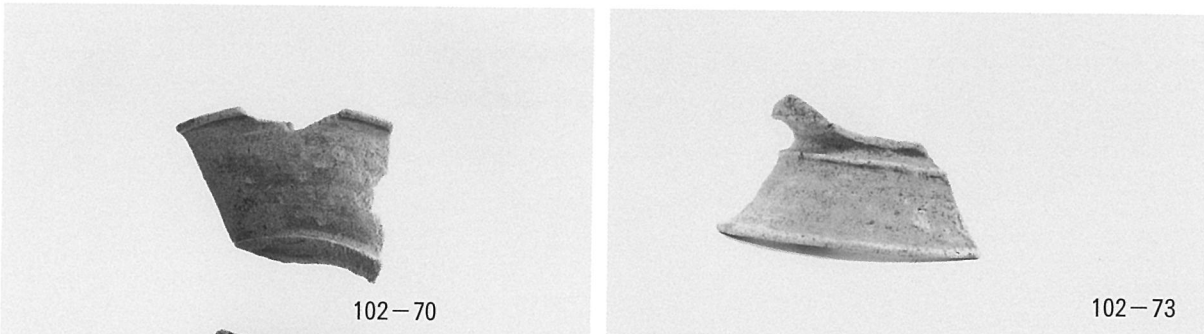
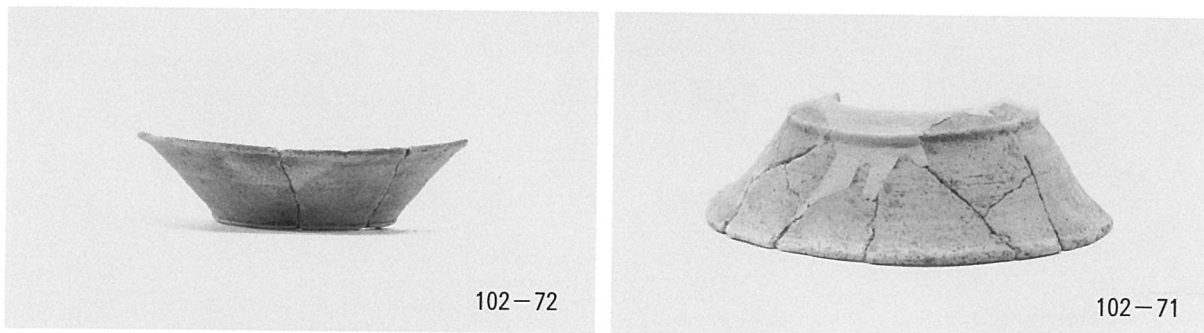
102-68



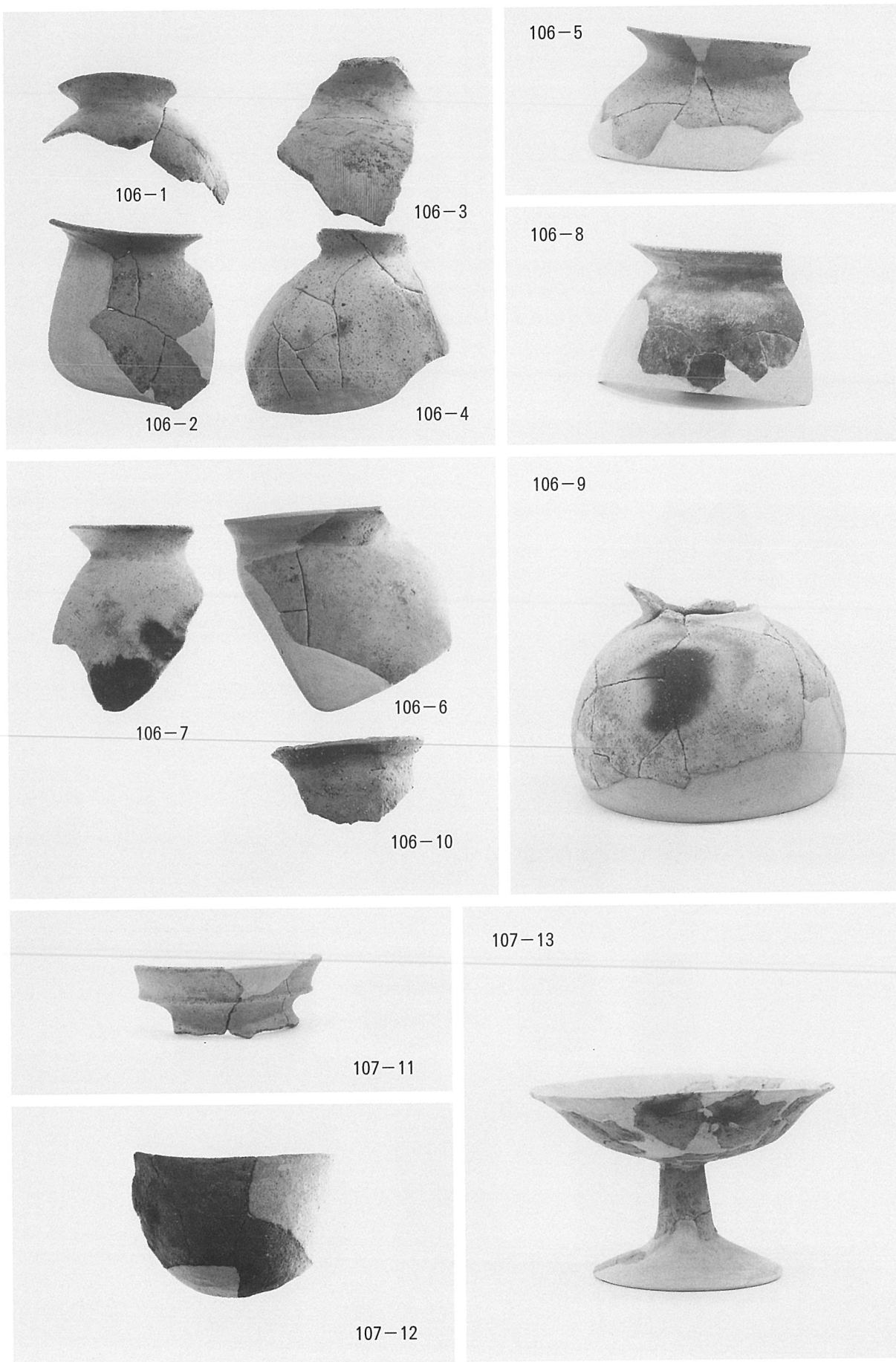
102-69



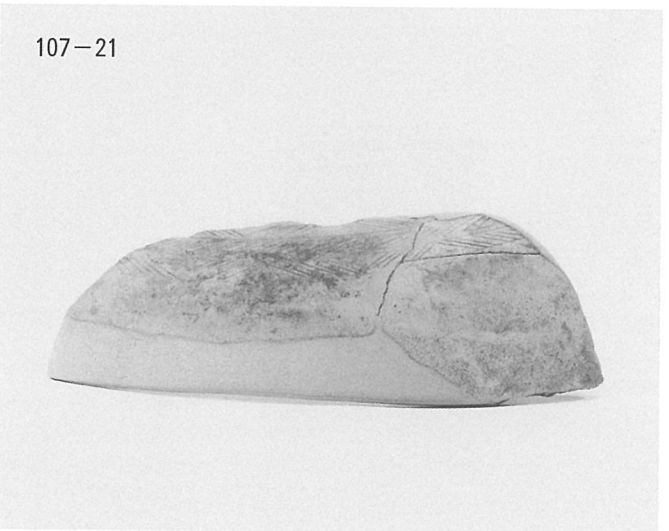
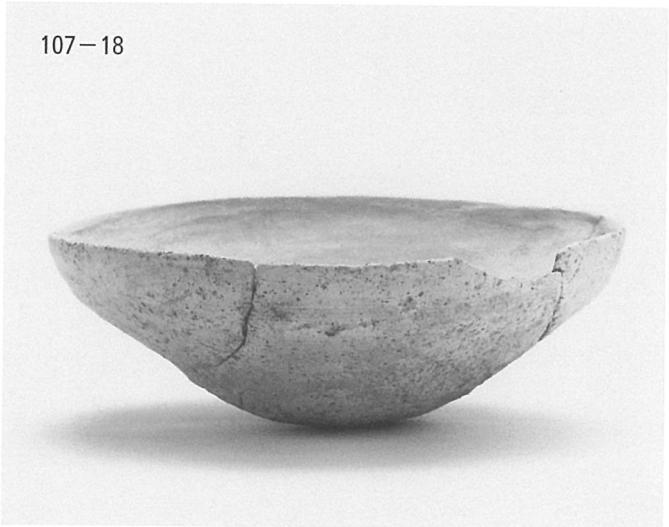
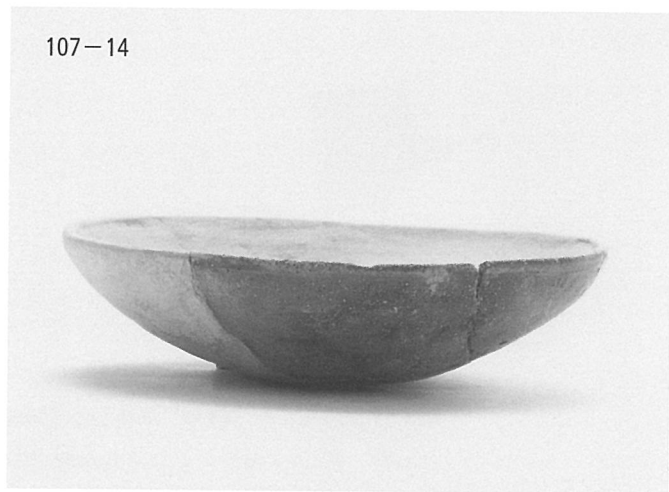
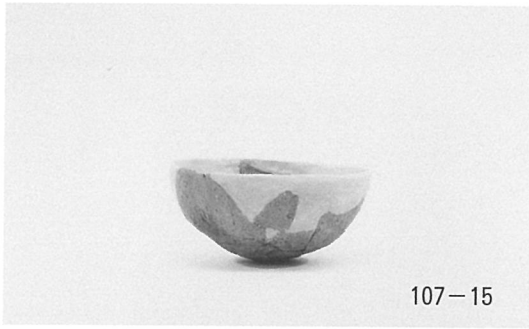
2 D区 5 層出土遺物 土師器器台、低脚坏



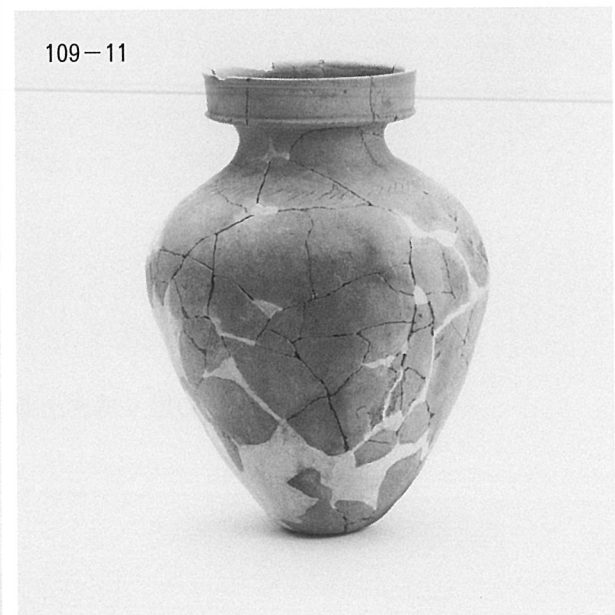
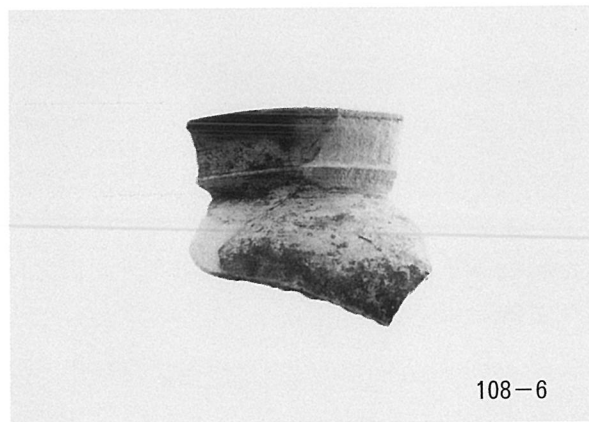
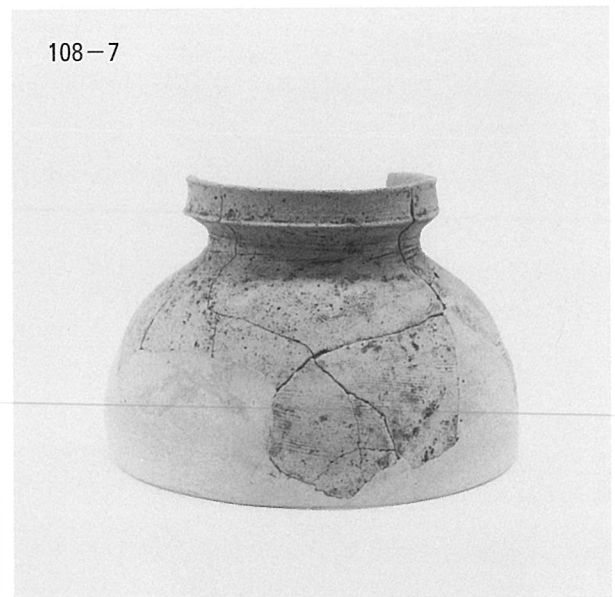
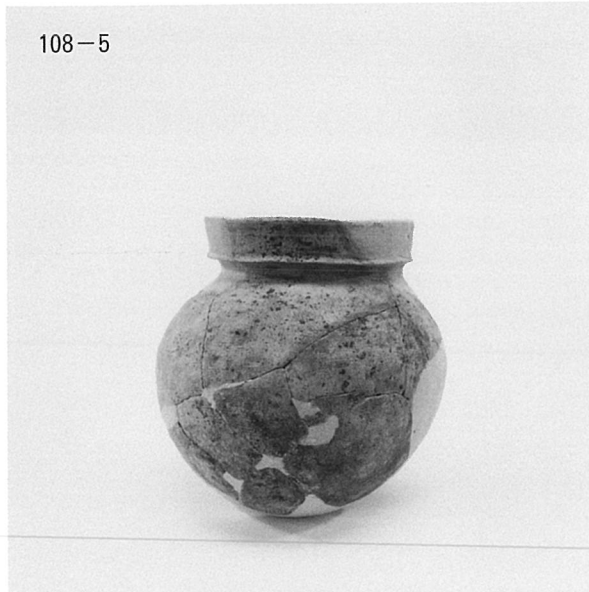
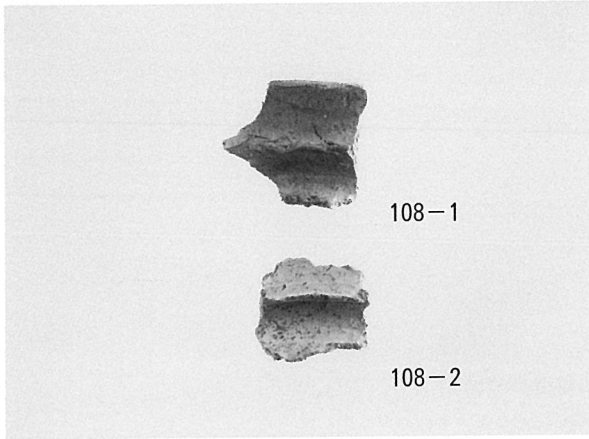
2 D区 5層出土遺物 土師器器台、鉢 土錘



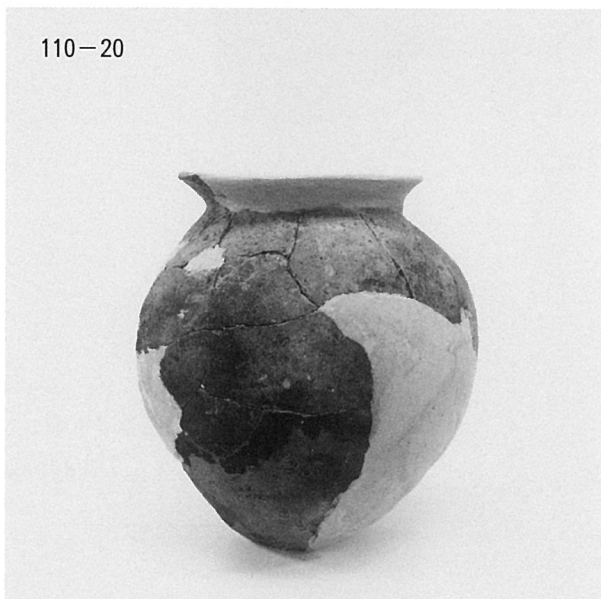
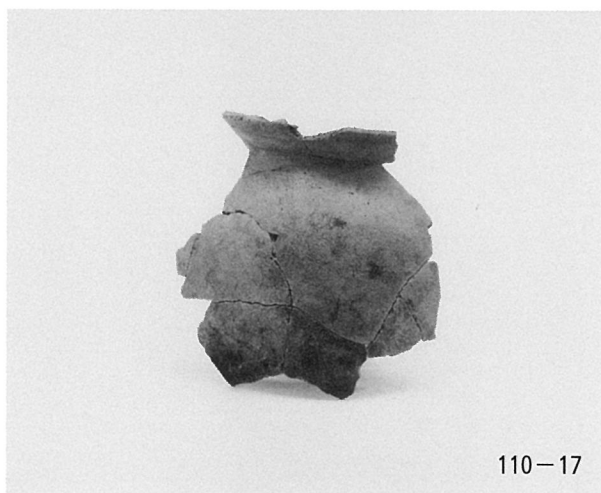
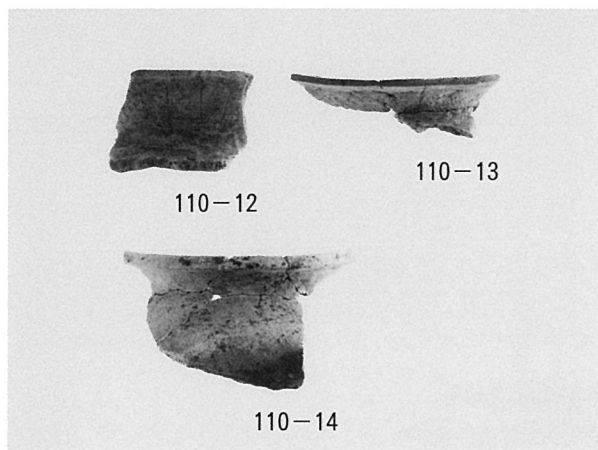
2 D区 5 層出土遺物 土師器甕、高坏



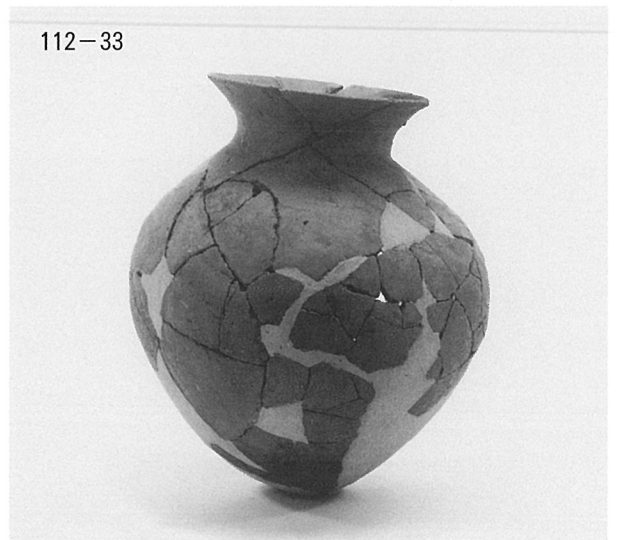
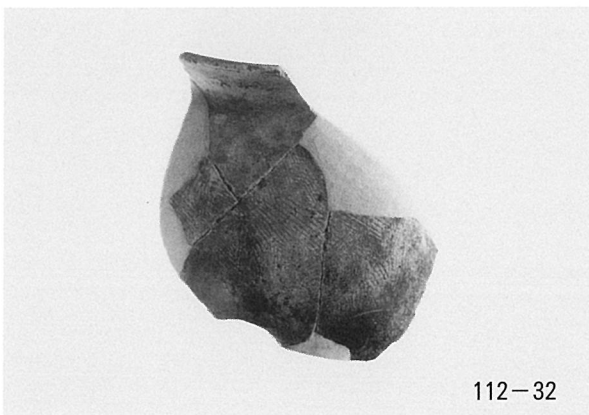
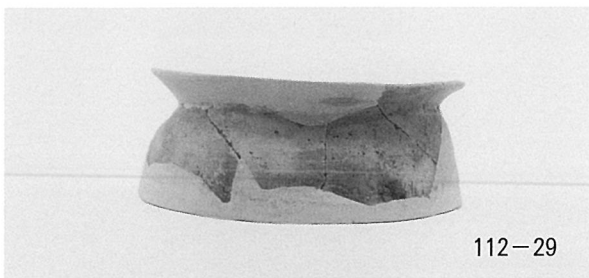
2 D区5層出土遺物 土師器鉢、壺



2 D区 6層出土遺物 弥生土器甕、土師器甕、壺



2 D区 6層出土遺物 土師器甕



113-34



113-35



114-36



115-39



114-37



115-40

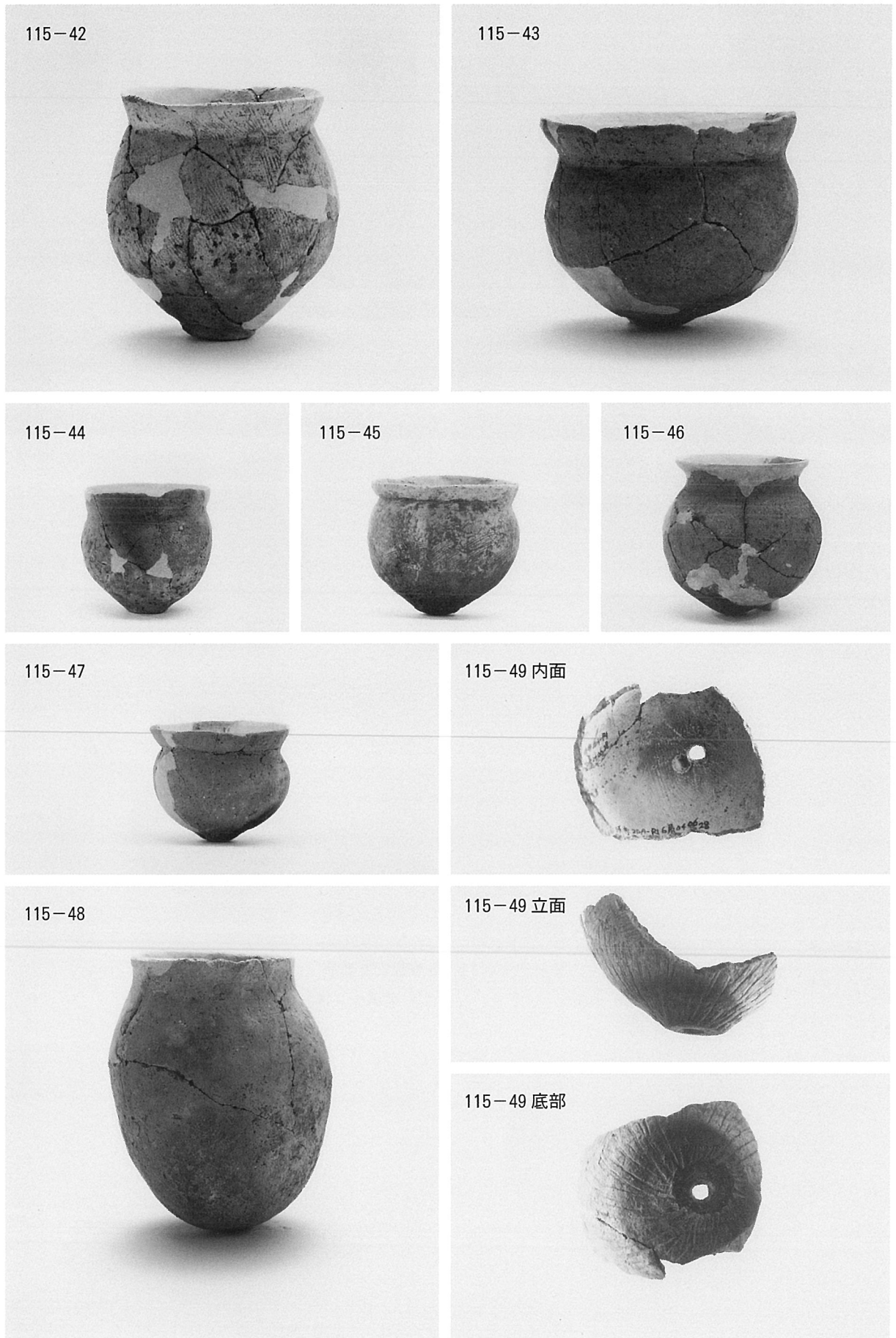


114-38

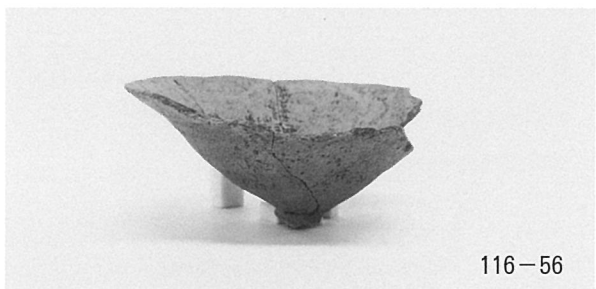
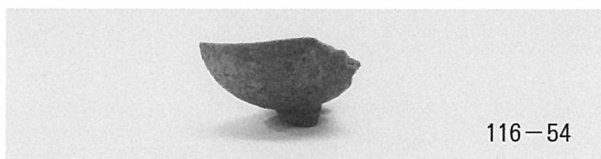
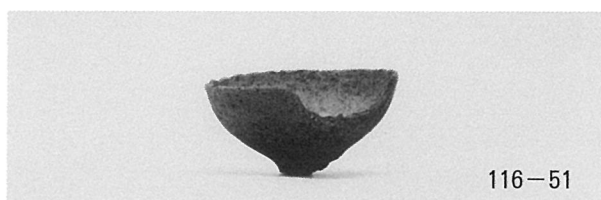


115-41

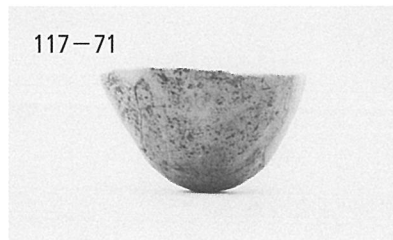
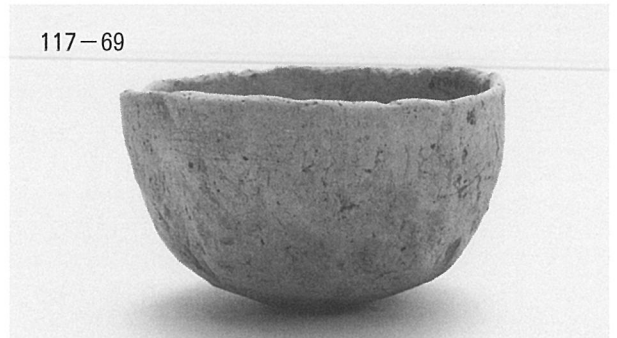
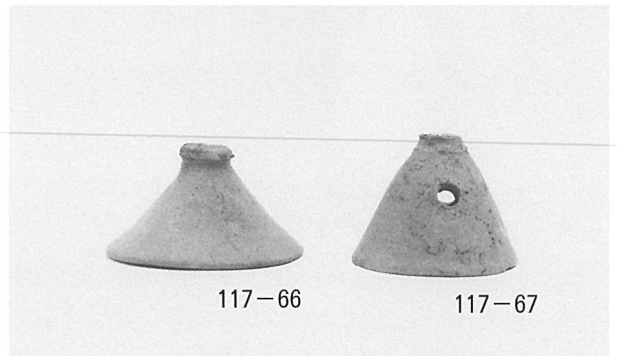
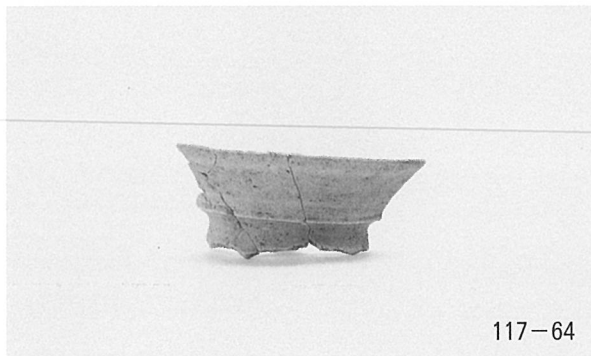
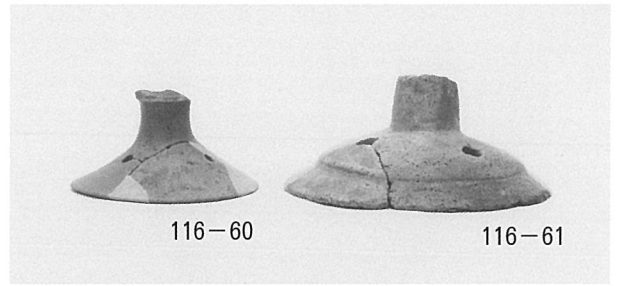




2 D区6層出土遺物 土師器甕、壺



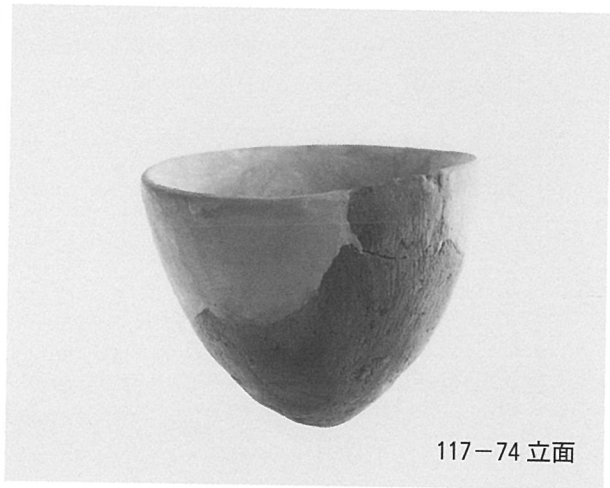
2 D区 6層出土遺物 土師器高杯、低脚高杯、低脚杯



2 D区 6層出土遺物 土師器高坏、低脚坏、器台、鉢



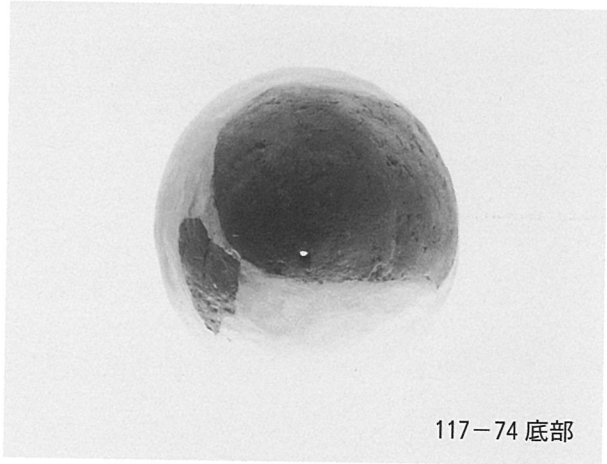
117-73



117-74 立面



117-75



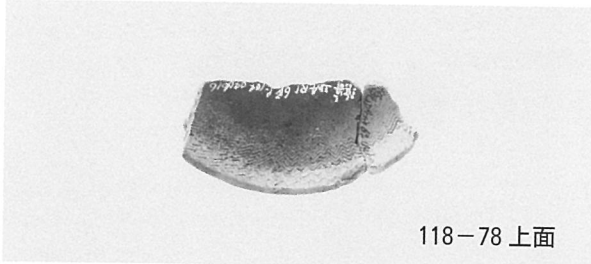
117-74 底部



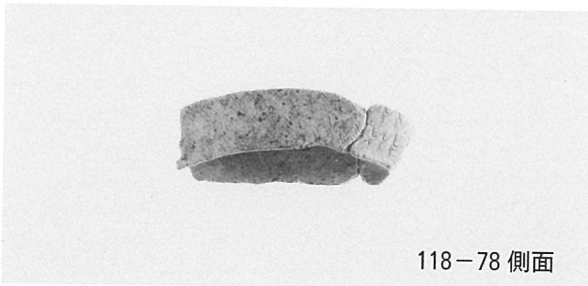
117-76



117-77



118-78 上面

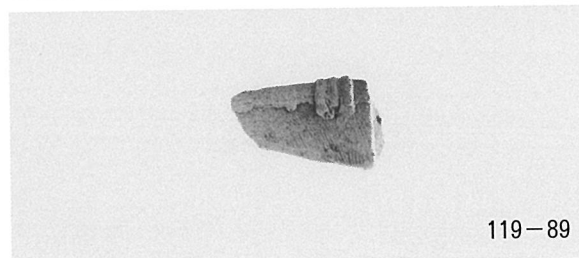
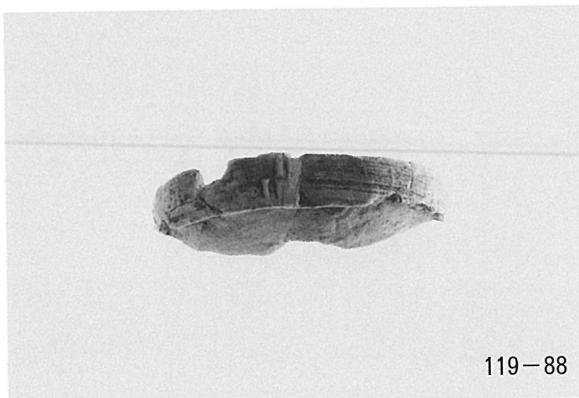
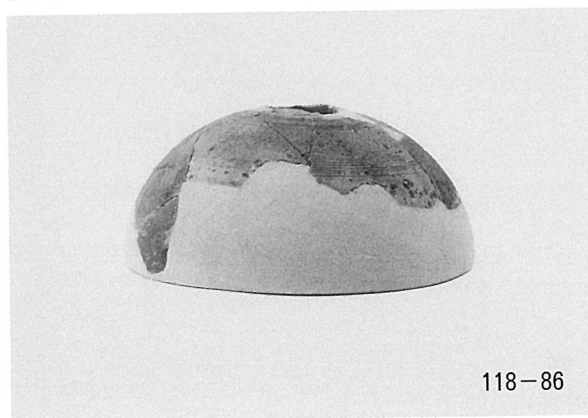
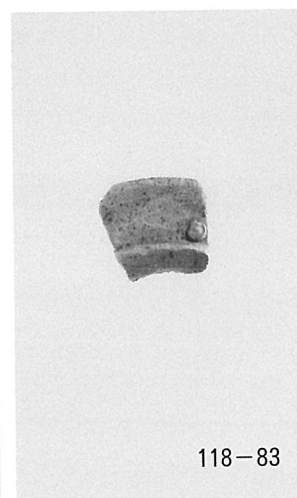
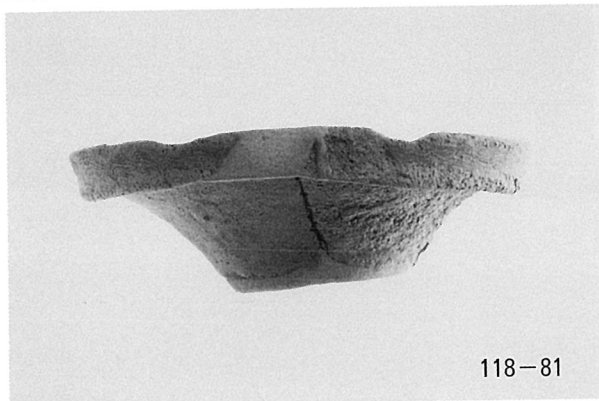
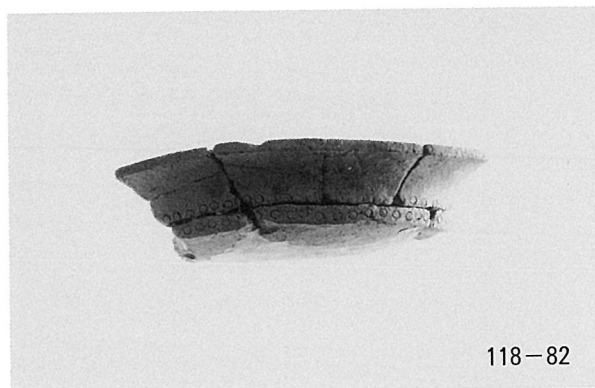
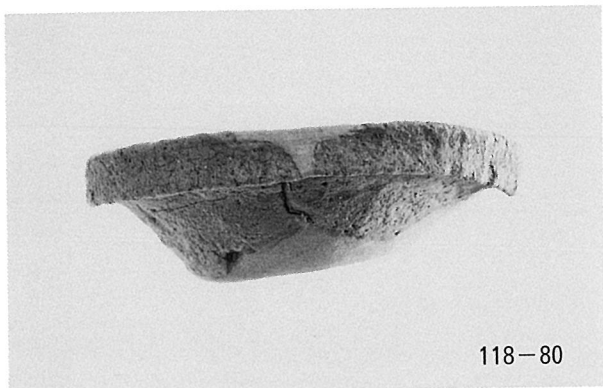


118-78 侧面

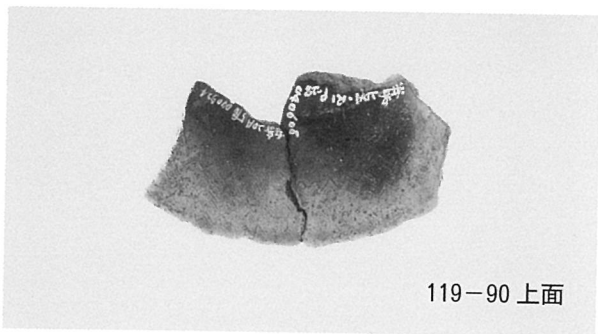


118-79

2 D区 6層出土遺物 土師器低脚坏、鉢 弥生土器壺



2 D区 6 層出土遺物 弥生土器壺



119-90 上面



119-91



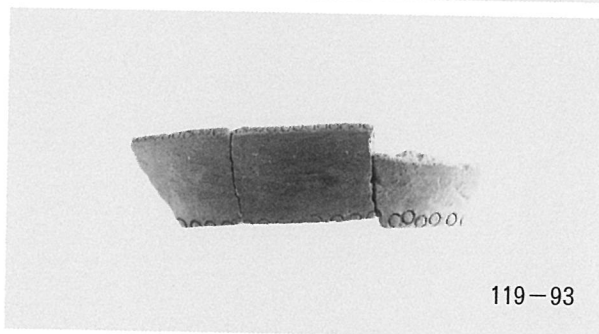
119-90 立面



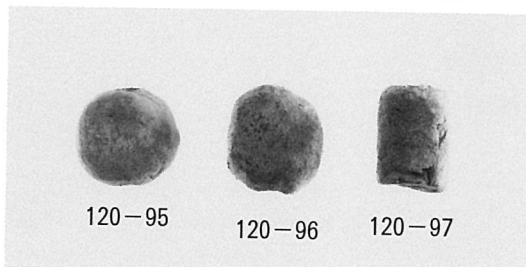
119-92



119-94



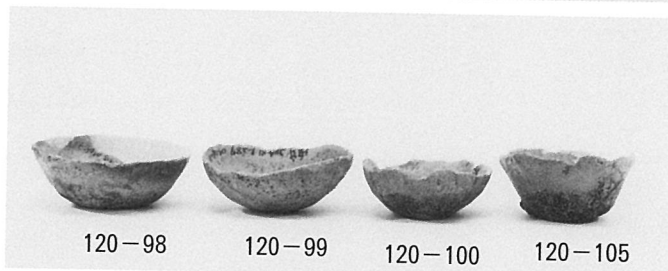
119-93



120-95

120-96

120-97

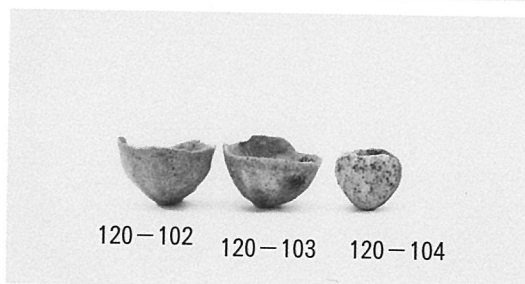


120-98

120-99

120-100

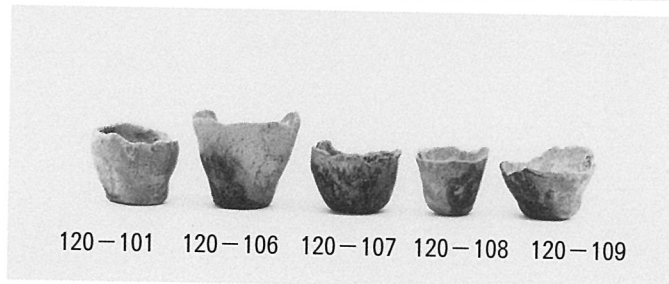
120-105



120-102

120-103

120-104



120-101

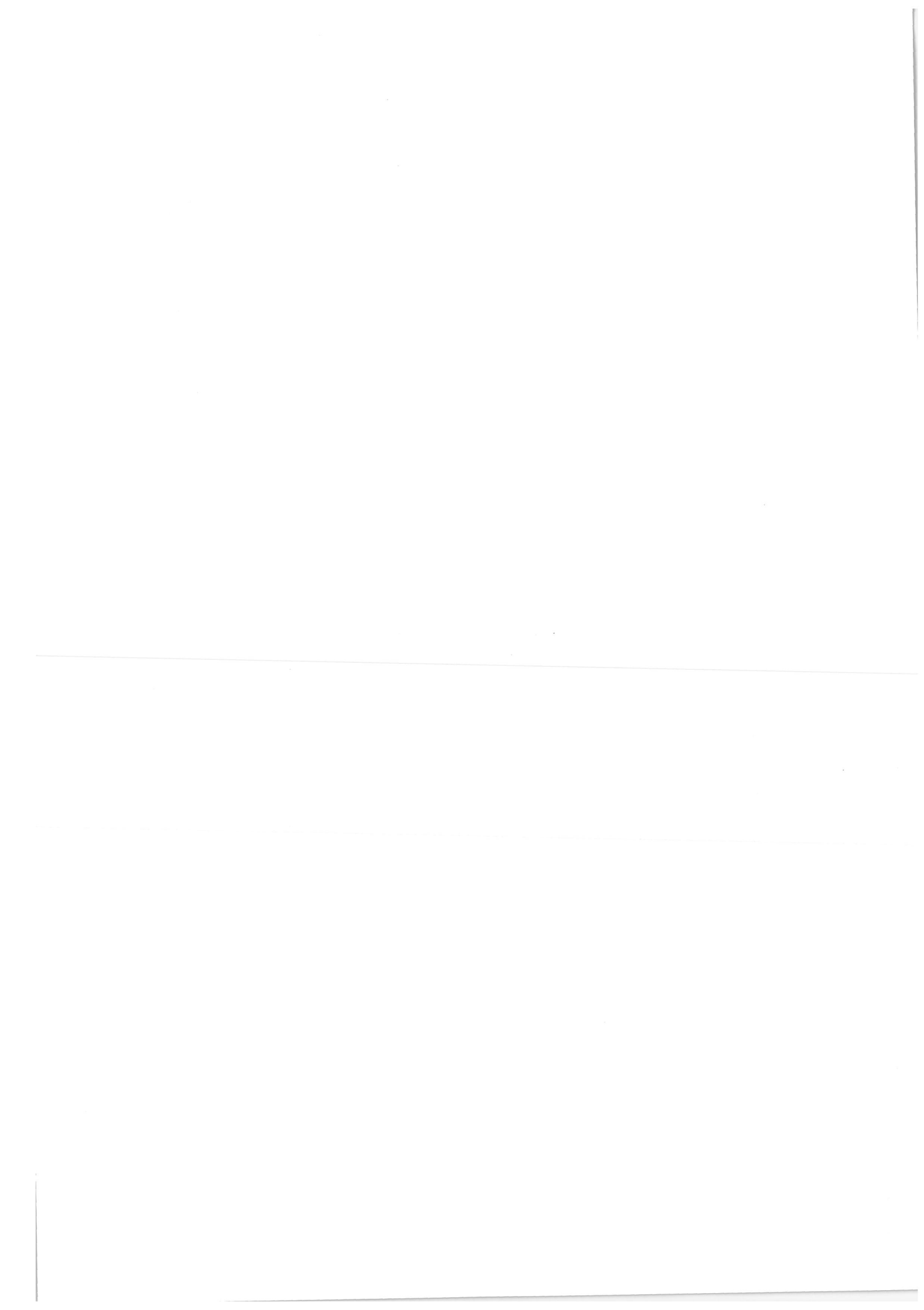
120-106

120-107

120-108

120-109

2 D区 6層出土遺物 弥生土器壺 土製品 土錘 手捏土器



2 E 区



2 E区中央南辺上層
製炭窯跡検出状況（北から）



2 E区製炭窯跡
検出状況（西から）

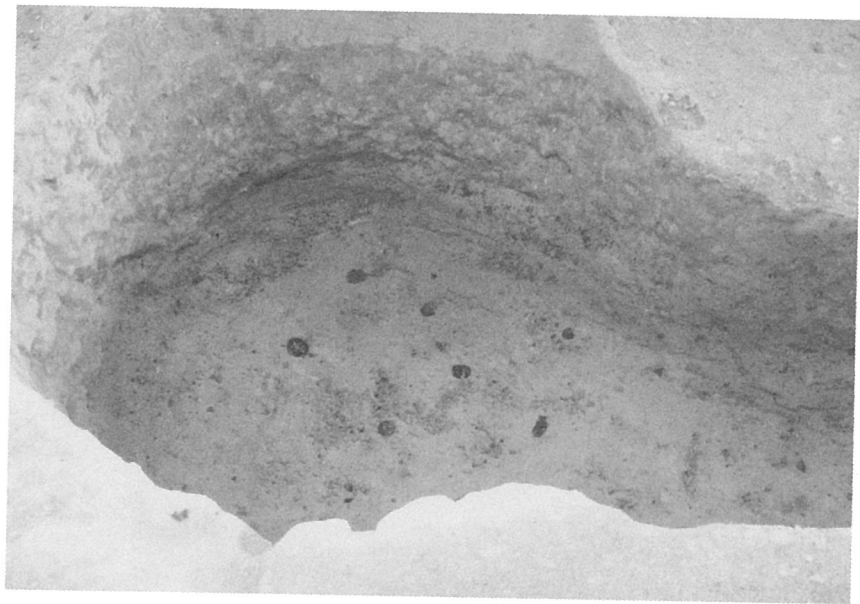


2 E区製炭窯跡床面直上
炭、灰堆積物検出状況

2 E区製炭窯跡床面直上
炭、灰堆積状況



2 E区製炭窯跡焼成室
床面炭材痕検出状況

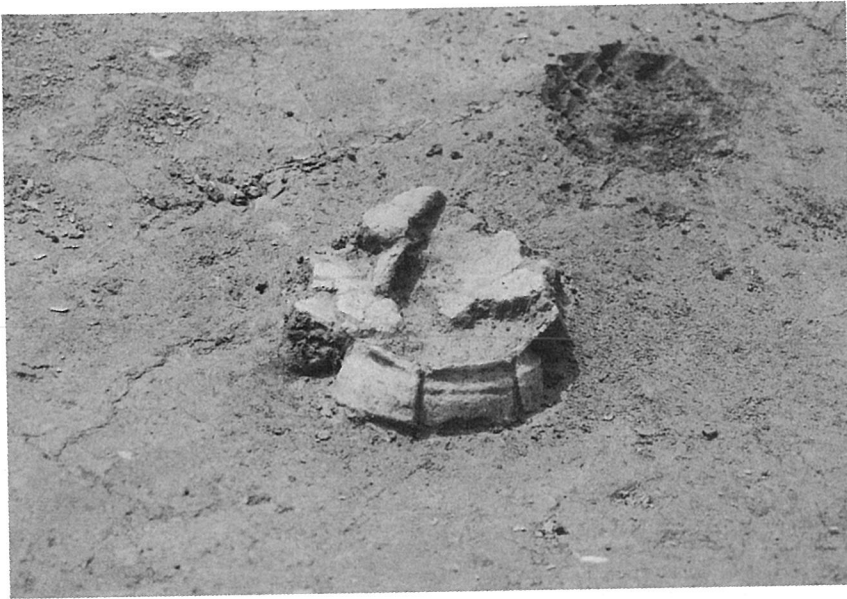


2 E区製炭窯跡
完掘（西から）





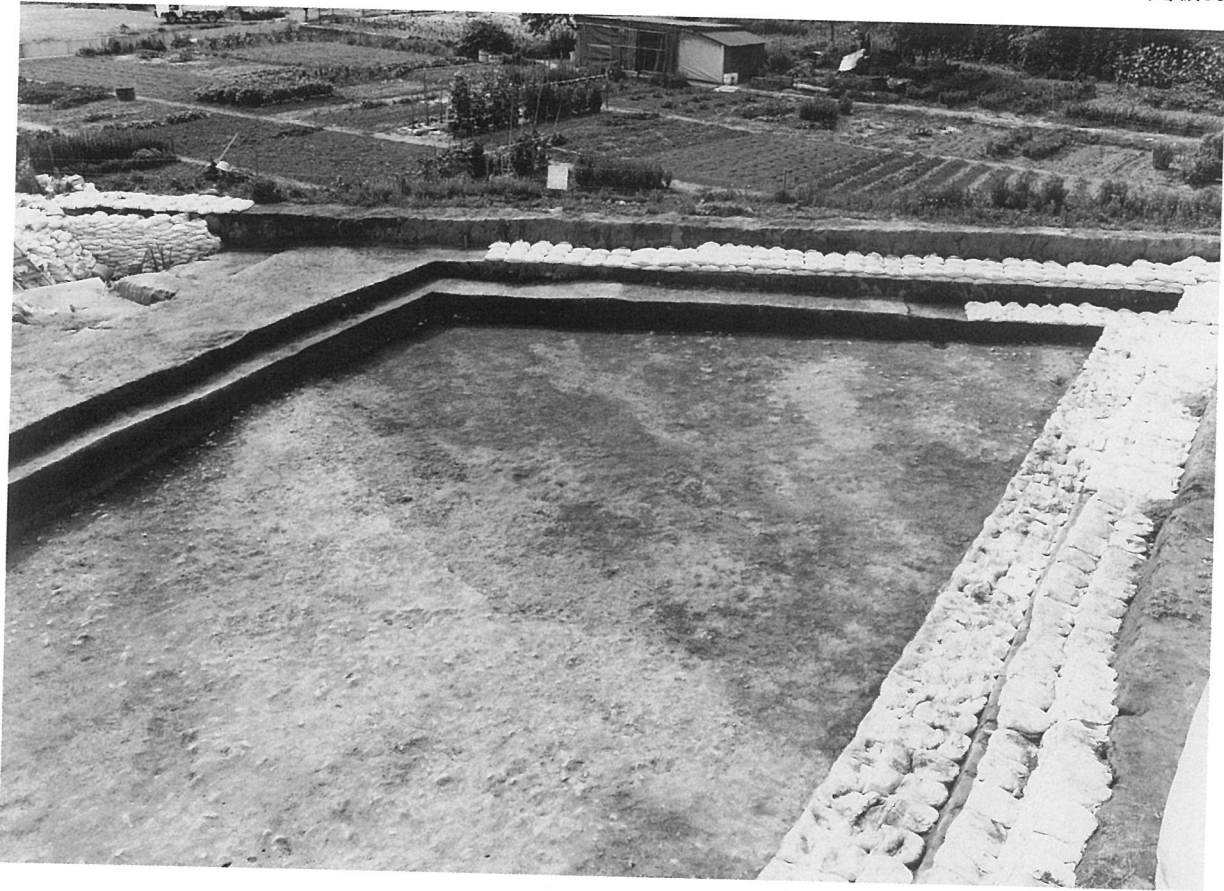
2 E 区
遺物出土状況（土師器甕）



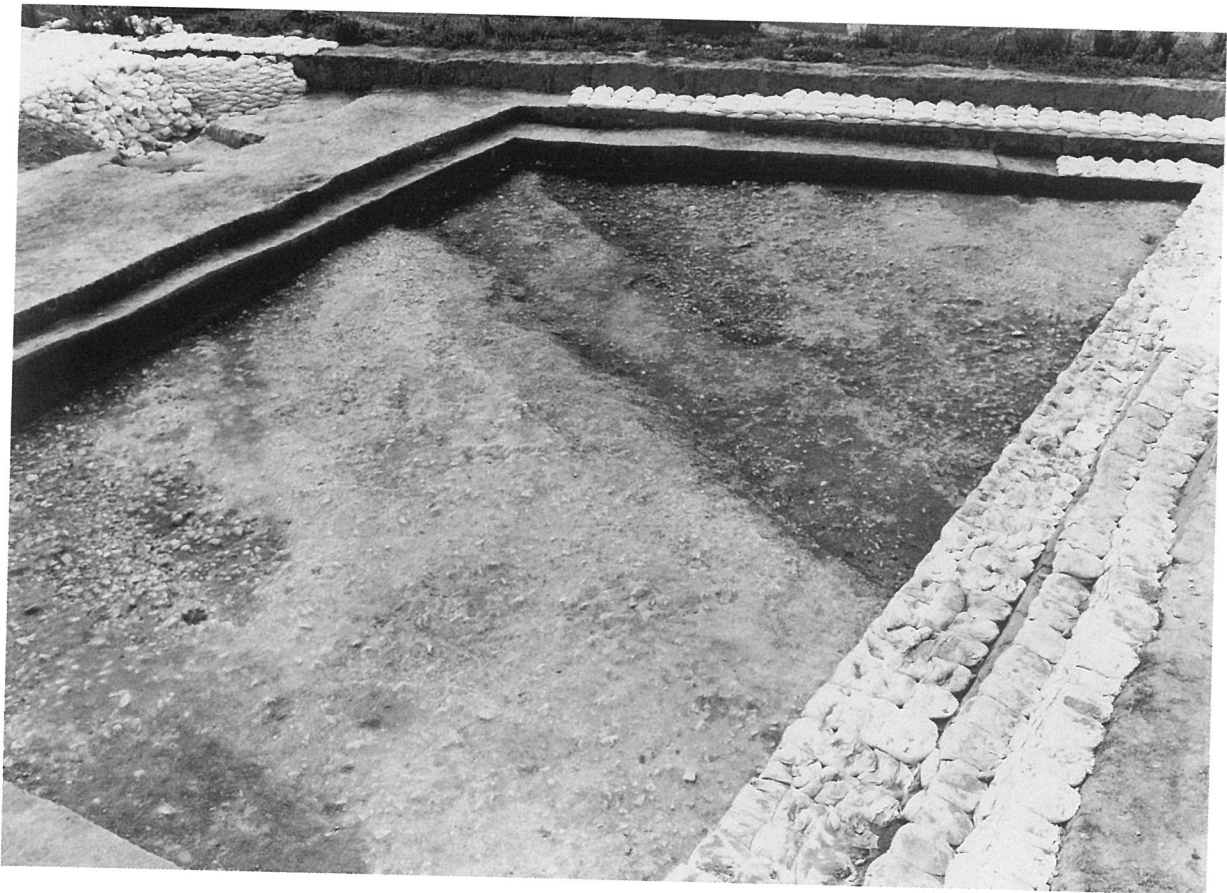
2 E 区
遺物出土状況（土師器甕）



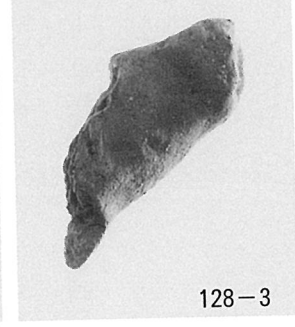
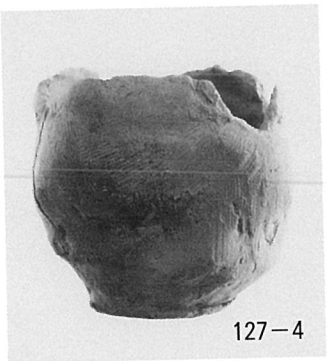
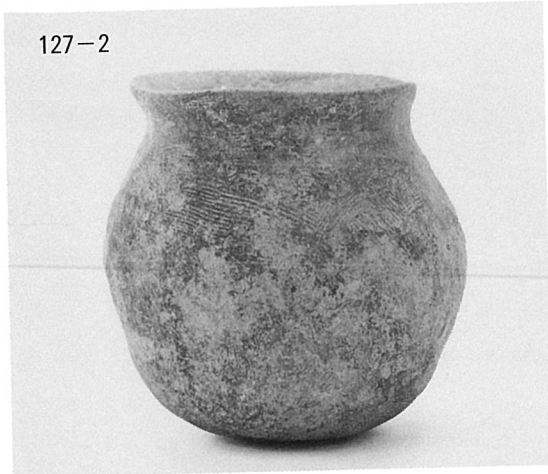
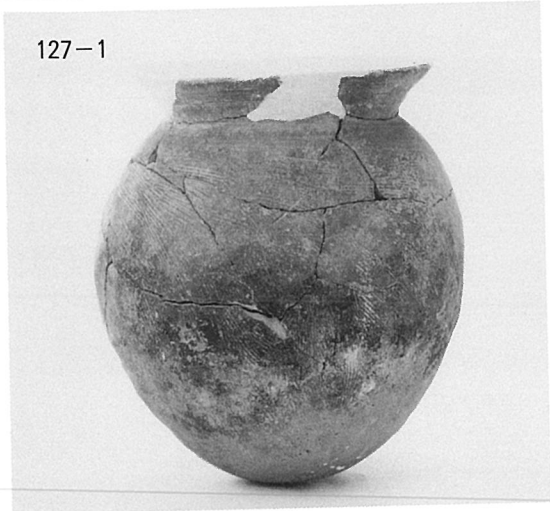
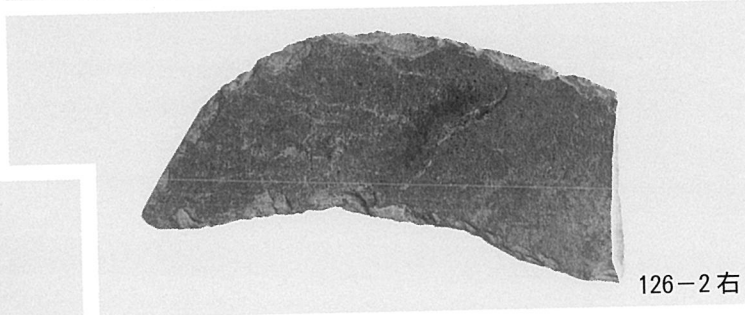
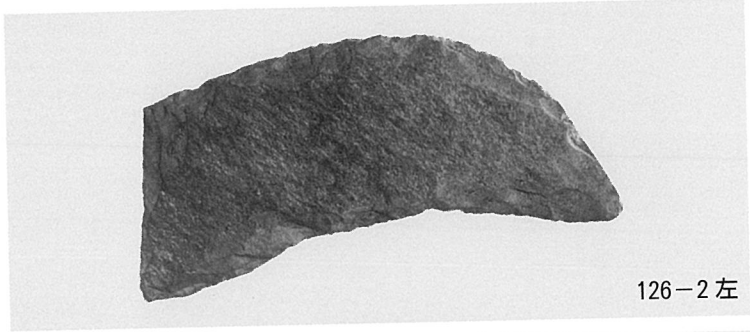
2 E 区
遺物出土状況
（弥生時代中期土器片）



2 E区流路跡検出状況（南から）



2 E区流路跡完掘（南から）



2 E 区出土遺物 弥生土器 石鎌 土師器甕、壺、高坏 土製支脚

報 告 書 抄 録

フリガナ	ハマヨリ・ジカタイセキ							
書名	浜寄・地方遺跡							
副書名	1H・1I・2B・2D・2E各区の調査							
巻次	2							
シリーズ名	一般国道9号(益田道路)建設予定地内埋蔵文化財発掘調査報告書							
シリーズ番号	4							
編集者名	大庭俊次・田原淳史							
編集機関	島根県教育庁埋蔵文化財調査センター http://www.pref.shimane.lg.jp/maizobunkazai/							
所在地	〒690-0131 島根県松江市打出町33番地 TEL: 0852-36-8608 E-mail: maibun@pref.shimane.lg.jp							
発行年月日	2007年3月30日							
所収遺跡名	所在地	コード		北緯	東経	調査期間	調査面積 (m ²)	調査原因
		市町村	遺跡番号					
浜寄・地方 遺跡	シマネケン 島根県 マズダシ 益田市 タカツチョウ 高津町	32204	Q274	34°	131°	2003.4.8	8,000	一般国道9号 (益田道路) 改築工事
				40′	49′	～		
				42″	12″	2003.1.30		
				～	～	～		
34°	131°	2004.4.12	8,880					
40′	49′	～						
49″	27″	2004.12.22						
～	～	～						
遺跡名	種別	主な時代		主な遺構		主な遺物		特記事項
浜寄・地方 遺跡	散布地 集落跡	弥生時代 ～ 江戸時代		竪穴建物跡 河道跡		石鎌、弥生土器 土師器、須恵器、土製品 木製鋤未成品 えぶり未成品 木造仏手		
要約	<p>浜寄・地方遺跡は島根県益田市高津に所在する。遺構としては水田跡・溝状遺構・建物跡などが検出されている。また、自然流路河道跡も検出され多量の遺物が出土している。遺物としては弥生時代前期から江戸時代までのものが出土しているが、中でも古墳時代前半期の遺物量が際立って多い。これに相当する時期の遺構としては、古墳時代前期後葉～中期にかけての遺物を伴う竪穴建物跡1棟しか検出しなかったが、周辺には、これら多量の遺物を産出する同時代の集落の拠点があるものと考えられる。また、洪水由来の堆積層から平安時代末の木造仏手(仏像の手)が出土しており、当時の仏教文化の地方における展開のようすが偲ばれる。</p>							

浜寄・地方遺跡

— 1H・1I・2B・2D・2E各区の調査 —

一般国道9号（益田道路）建設予定地内埋蔵文化財発掘調査報告書4

発行 2007年3月

発行者 国土交通省中国地方整備局
島根県教育委員会

編集 島根県教育庁埋蔵文化財調査センター

印刷 (有)松陽印刷所