

S B492 (東から)



S B492 柱穴出土状況 (西から)



S K8 出土状況 (北東から)



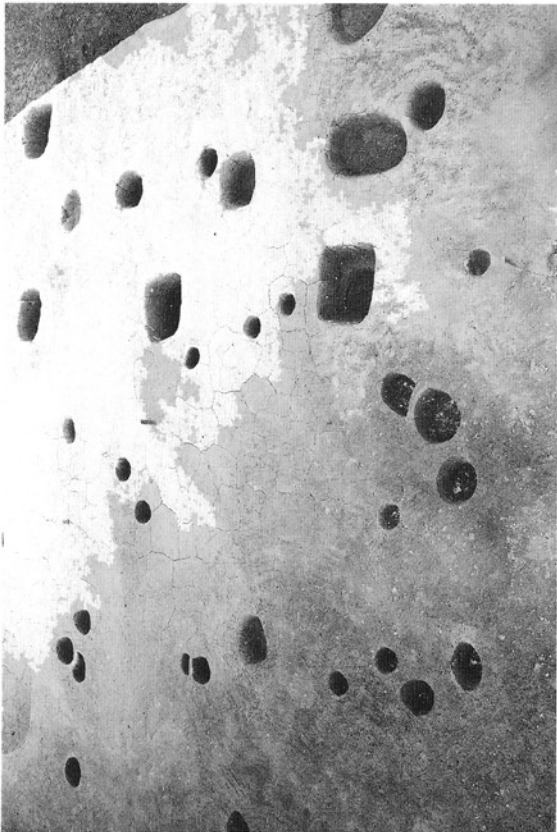
S K8 豎櫛出土状況 (北東から)



SE37 出土状況 (西から)



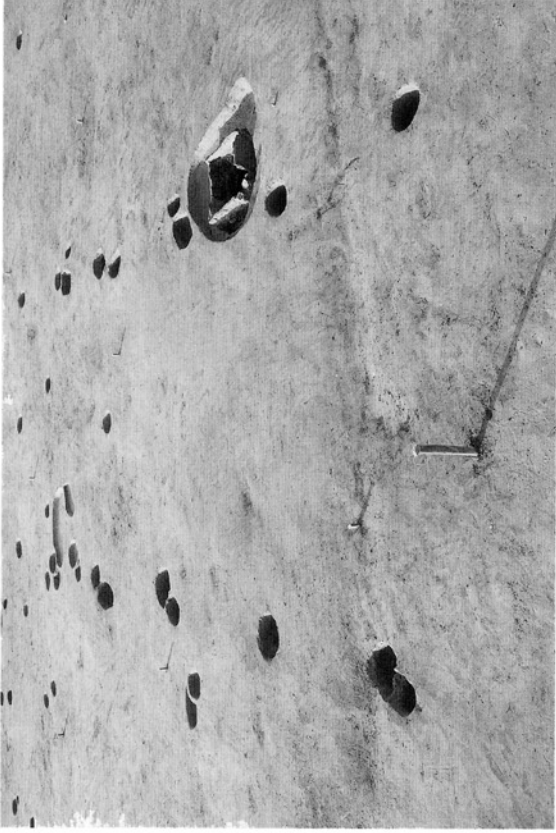
SE362 出土状況 (北から)



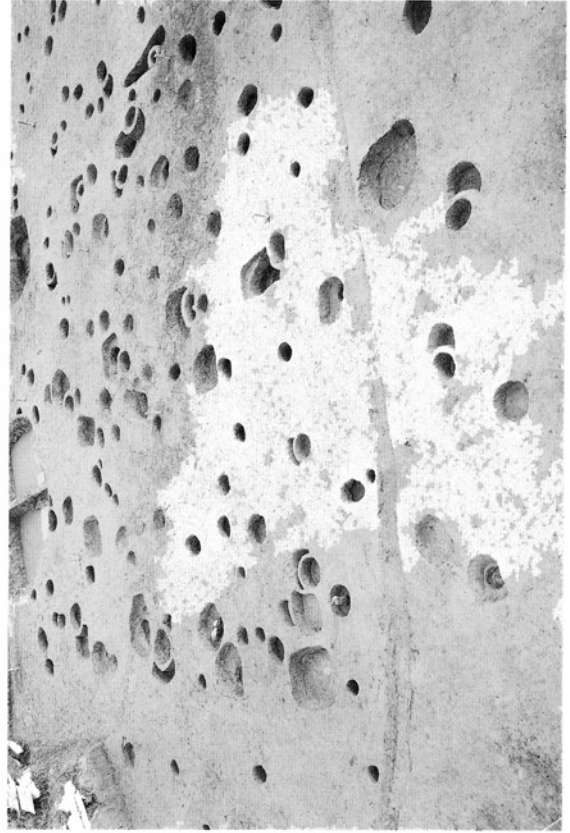
SB489 (南から)



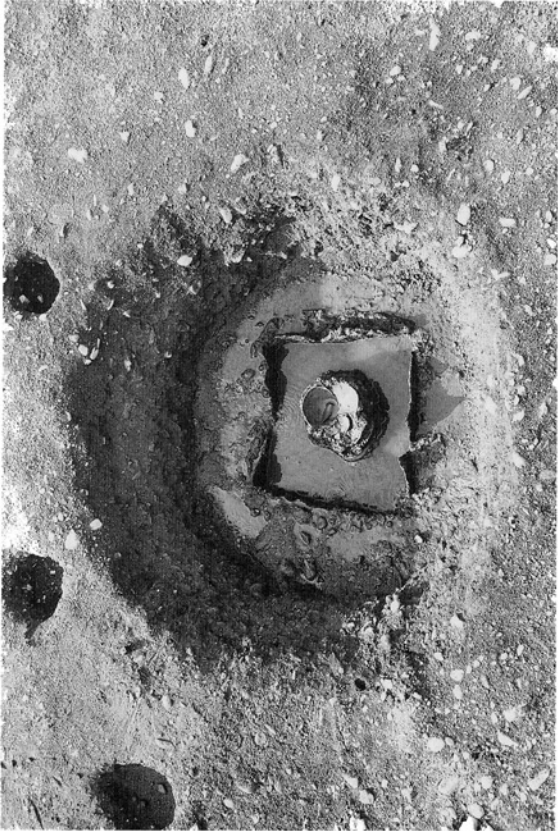
SK48・51 (西から)



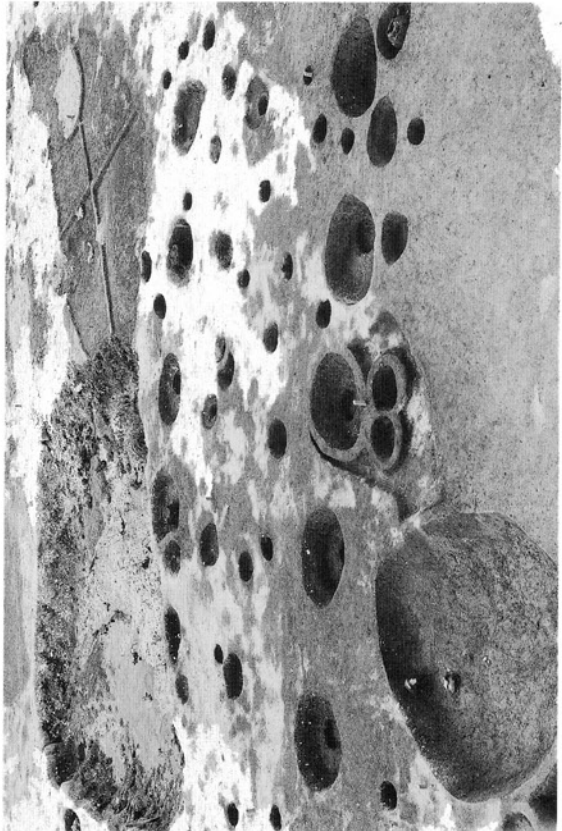
S B 384 (東から)



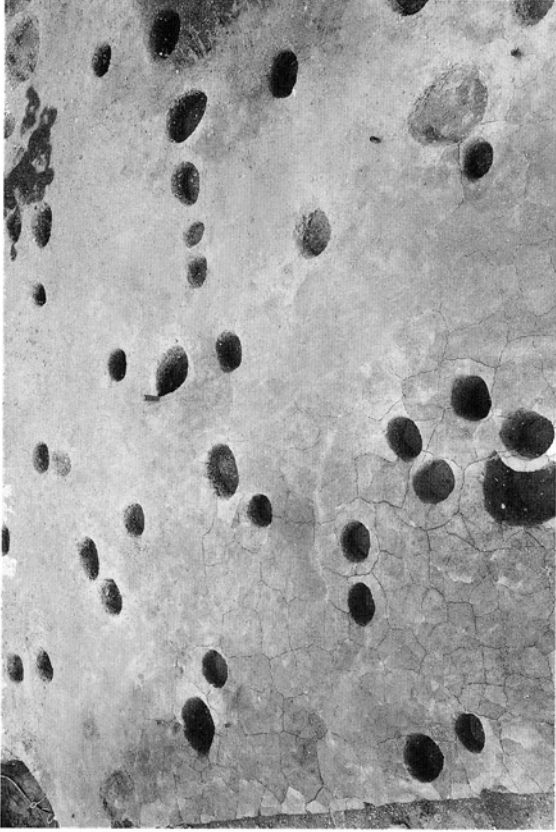
S B 385~394 (北西から)



S E 370 出土状況 (北から)



S B 35 (北から)



S B 490 (北から)



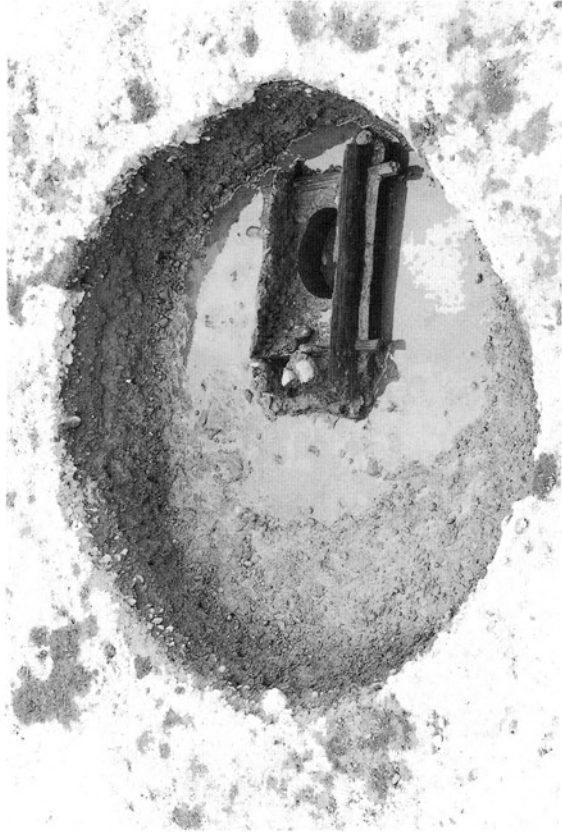
S B 490 柱穴出土状況 (南から)



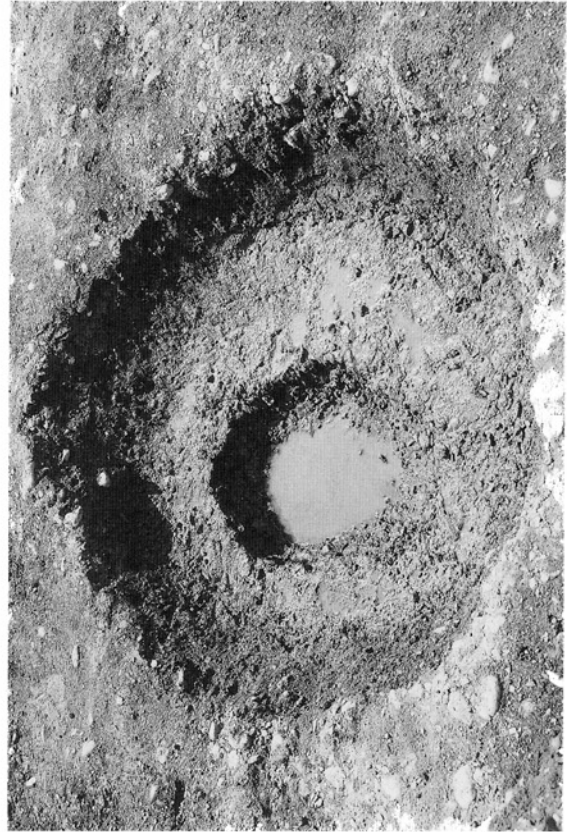
S B 488 (東から)



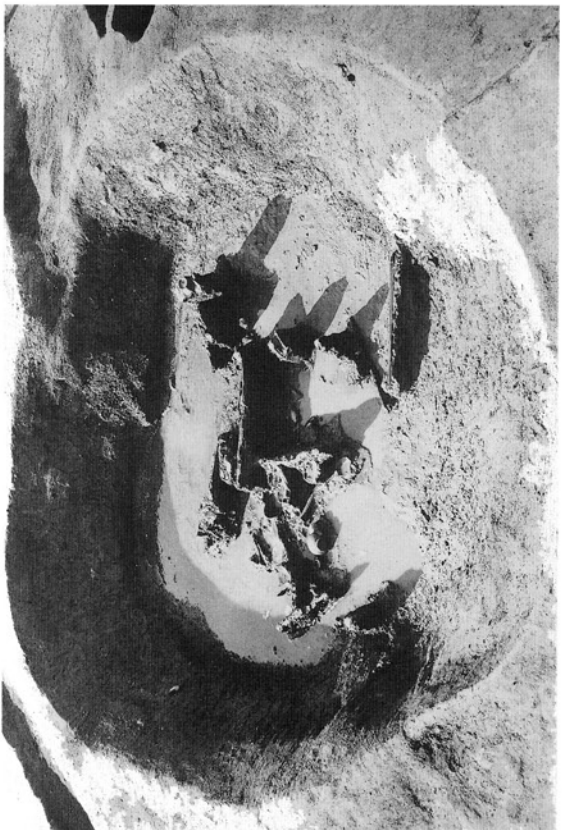
S B 488 柱穴出土状況 (南から)



SE 323 出土状況



SE 451 (北から)



SK 6 出土状況 (北から)



SE 218 出土状況 (北から)



S E 46 (北東から)



S E 46 調査状況 (南東から)



S X 419 (南から)



S K 223 出土状況 (西から)



S R210 (南から)



S R210 齋申出土状況 (北から)



S E207 (西から)



S Z227 (東から)



1



26



40



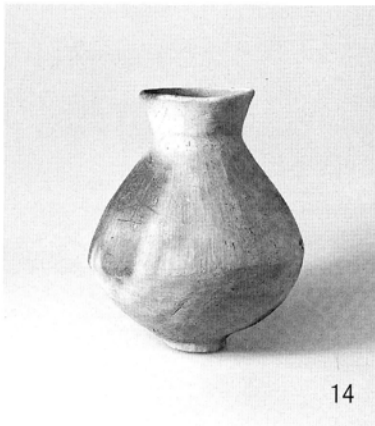
6



51



45



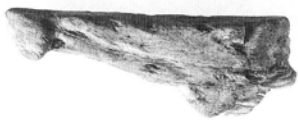
14



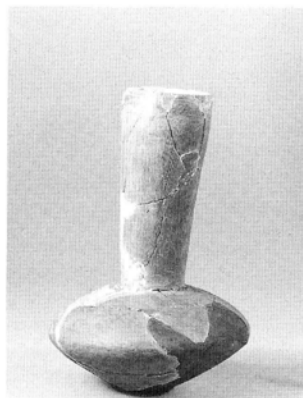
52



55



63



53



63



56



65



88



106



72



91



107



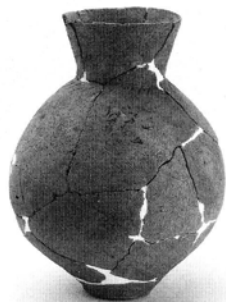
93



108



74



104



109



80



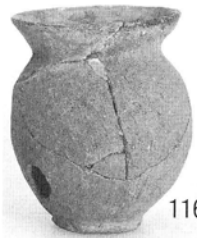
105



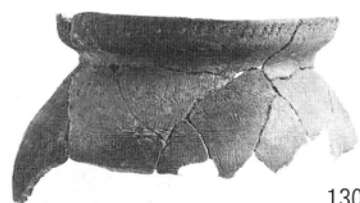
110



114



116



130



148



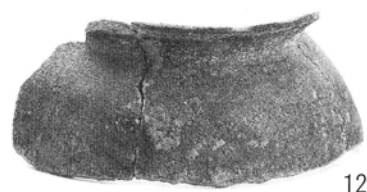
119



131



137



124



142



173



127



159



166



128



147

遺物写真 3



162



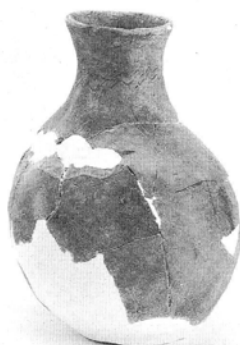
181



194



163



182



204



175



183



209



179



190



180



196



210



211



219



226



212



220



228



215



221



230



216



222



217



224



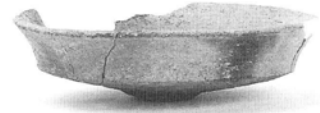
231



232



240



251



233



241



257



246



259



233



247



265



237



250



272



273



288



302



276



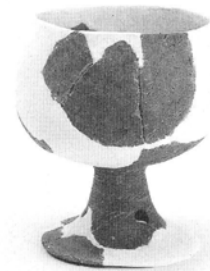
289



310



277



309



283



293



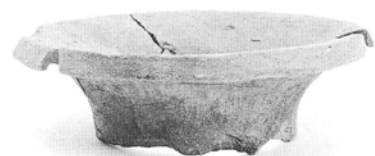
312



287



303



315



318



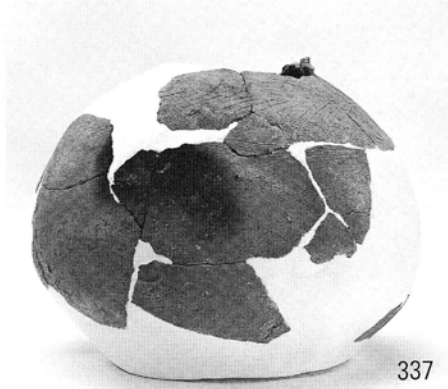
334



349



322



337



345



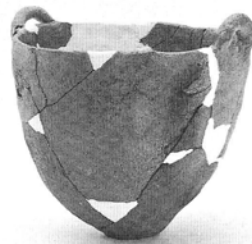
333



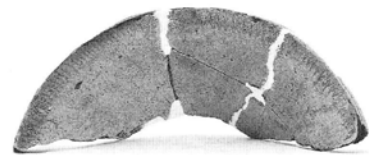
338



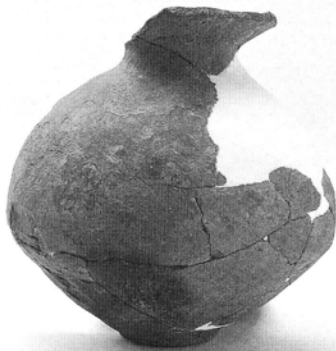
363



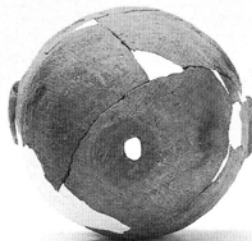
350



352



335



350



364



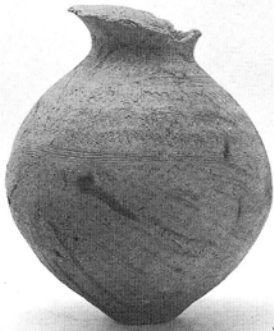
365



387



393



366



388



394



369



389



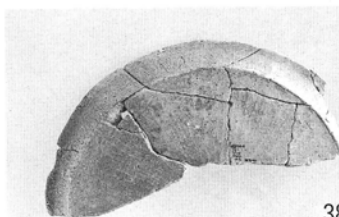
397



383



398



386



392



407

遺物写真9



409



419



428



410



423



429



411



424



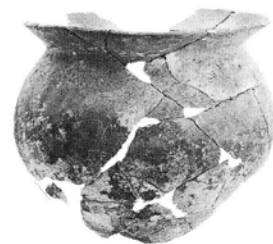
430



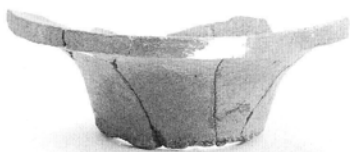
412



425



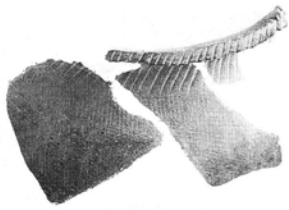
431



414



426



433



448



460



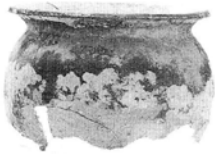
434



453



464



436



454



437



456



465



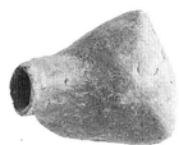
445



459



466



468



476



485



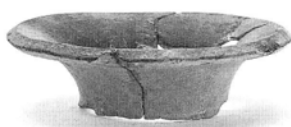
470



477



486



471



478



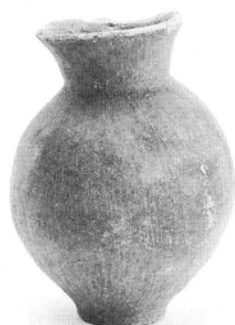
488



472



473



484



490



491



499



506



494



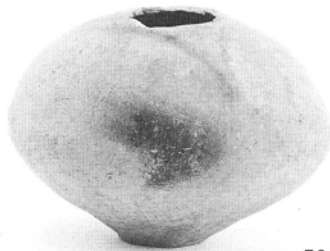
500



508



495



501



509



496



502



498



505



510



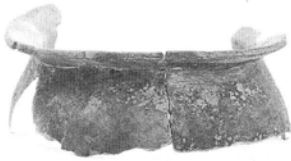
511



524



532



513



523



533



518



525



537



520



529



522



530



538



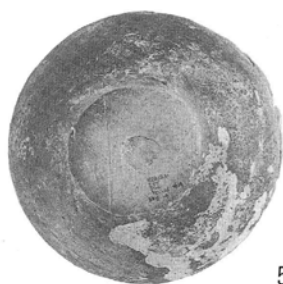
544



549



557



544



549



558



545



553



547



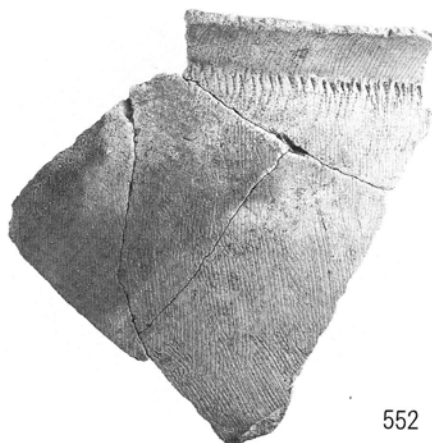
555



575



550



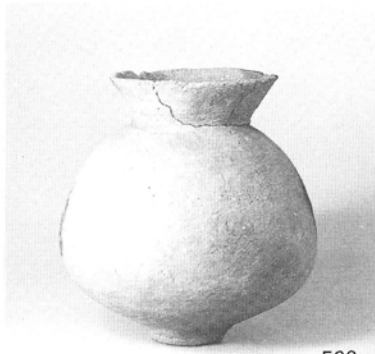
552



577



578



588



591



584



589



598



585



594



600



586



595



605



587



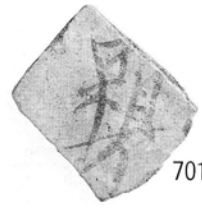
603



615



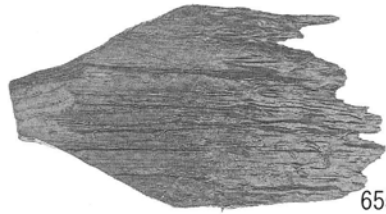
648



701



615



655



679



623



641



697



624



661



669



706



624



669



742



753



759



756



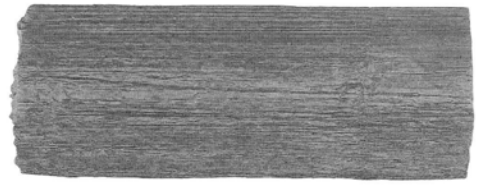
770



769



SK 6出土骨



928



932



934



SK 6出土骨



936



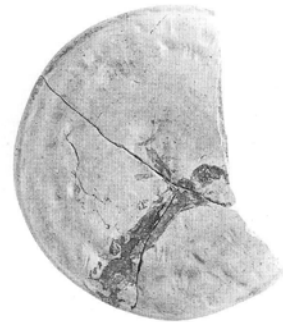
816



831



832



936



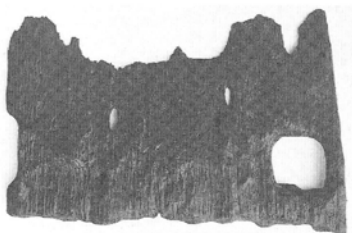
861



857



879



966



962



880



964

遺物写真 18



969



1040



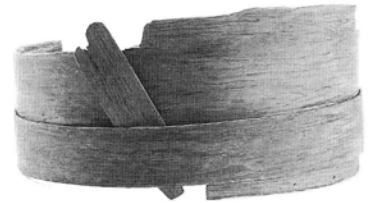
1034



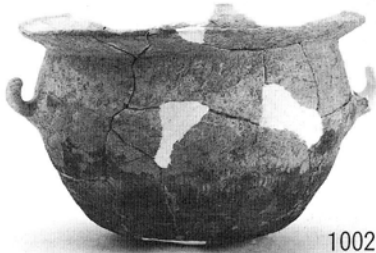
997



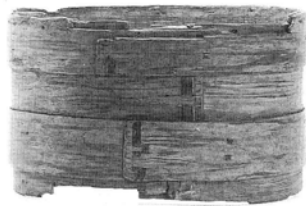
1050



1051



1002



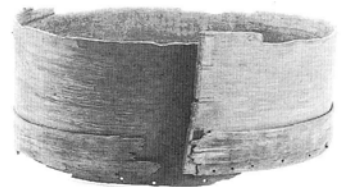
1090



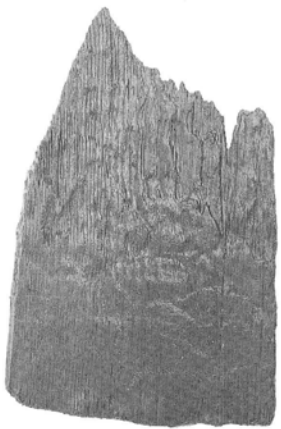
1009



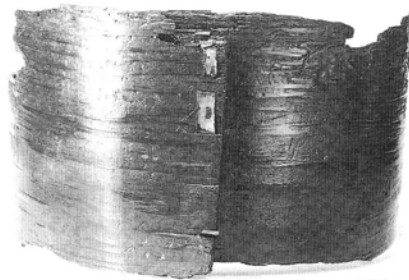
1014



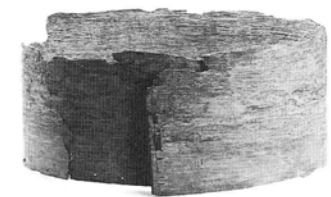
1100



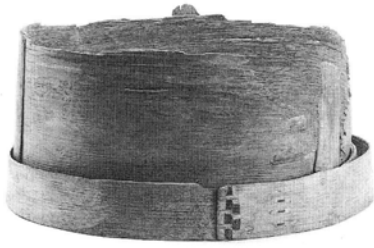
1011



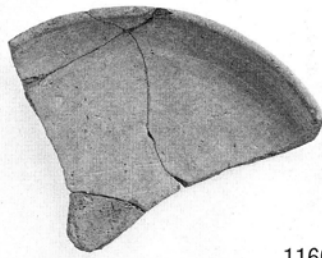
1021



1101



1116



1160



1266



1119



1180



1271



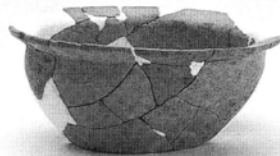
1122



1308



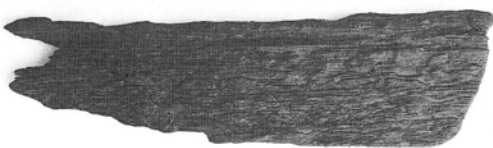
1129



1199



1331



1138



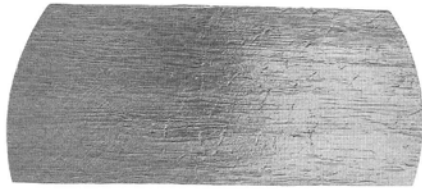
1226



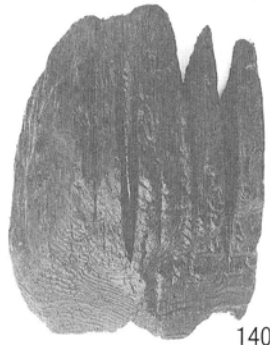
1355



1388



1396



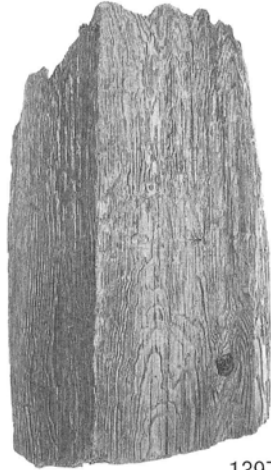
1402



1382



1373



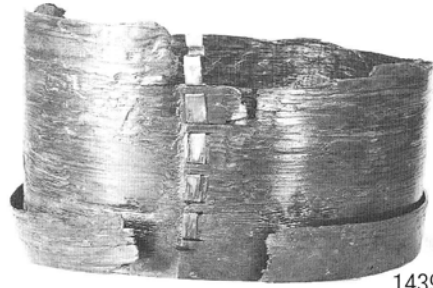
1397



1414



1393



1439



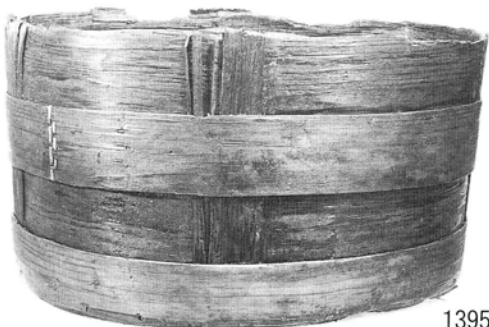
1394



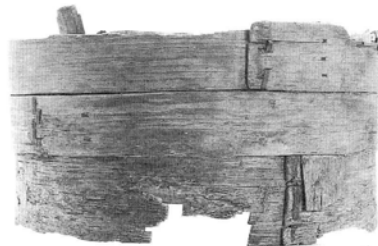
1440



1436



1395



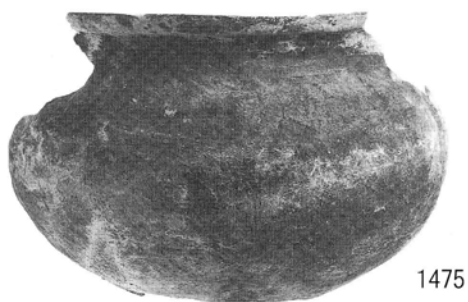
1450



1469



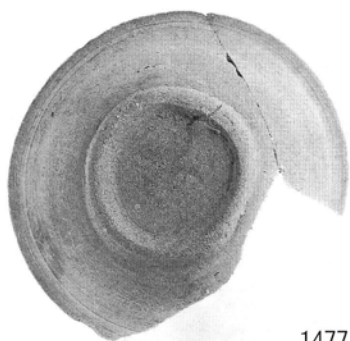
1471



1475



1483



1477



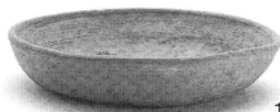
1484



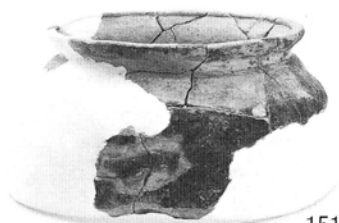
1490



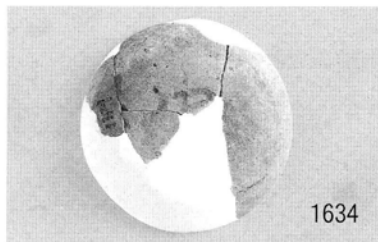
1514



1626



1516



1634



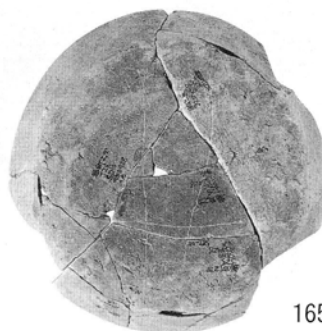
1656



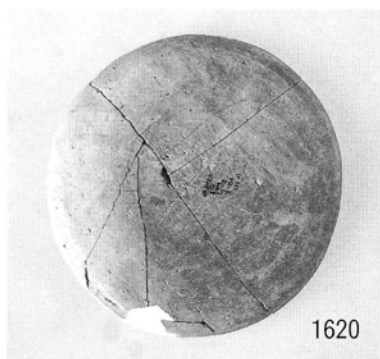
1620



1637



1658



1620



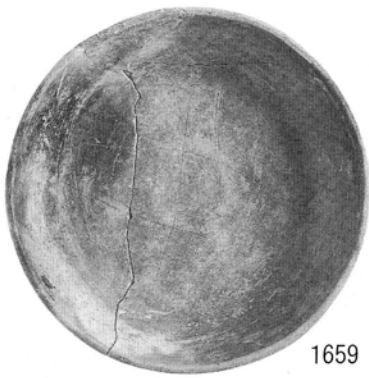
1641



1644



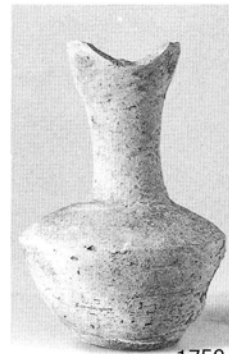
1671



1659



1677



1752



1756



1848



1875



1659



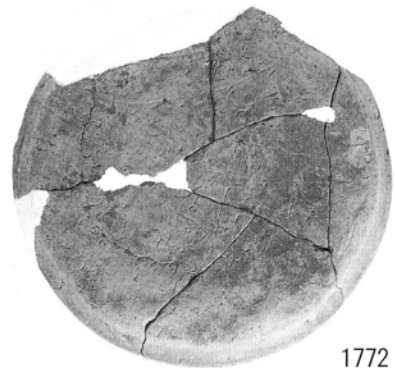
1683



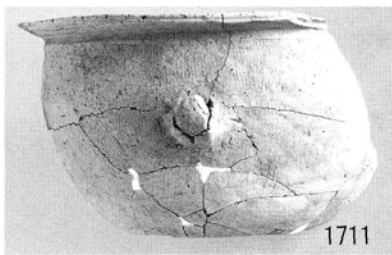
1772



1659



1772



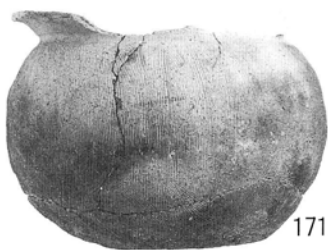
1711



1720



1781



1713



1767



1781



1738



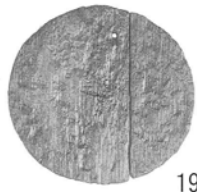
1760



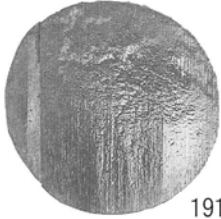
1861



1806



1915



1916



1919



1920



1930



1938



1940



1942



1943



1944



1945



1948



1949



1950



1953



1954



1955



1956



1957



1958



1961



1960



1970



1974



1984



1995



1998



2002



2006



1967



1971



1979



1994



1996



2000



2004



2008



1969



1973



1982



1999



1997



2001



2005



2013



2018



2031



2038



2041



2046



2049



2060



2057



2028



2032



2077



2077



2079



2079



2081



2081



2083



2088



2030



2033



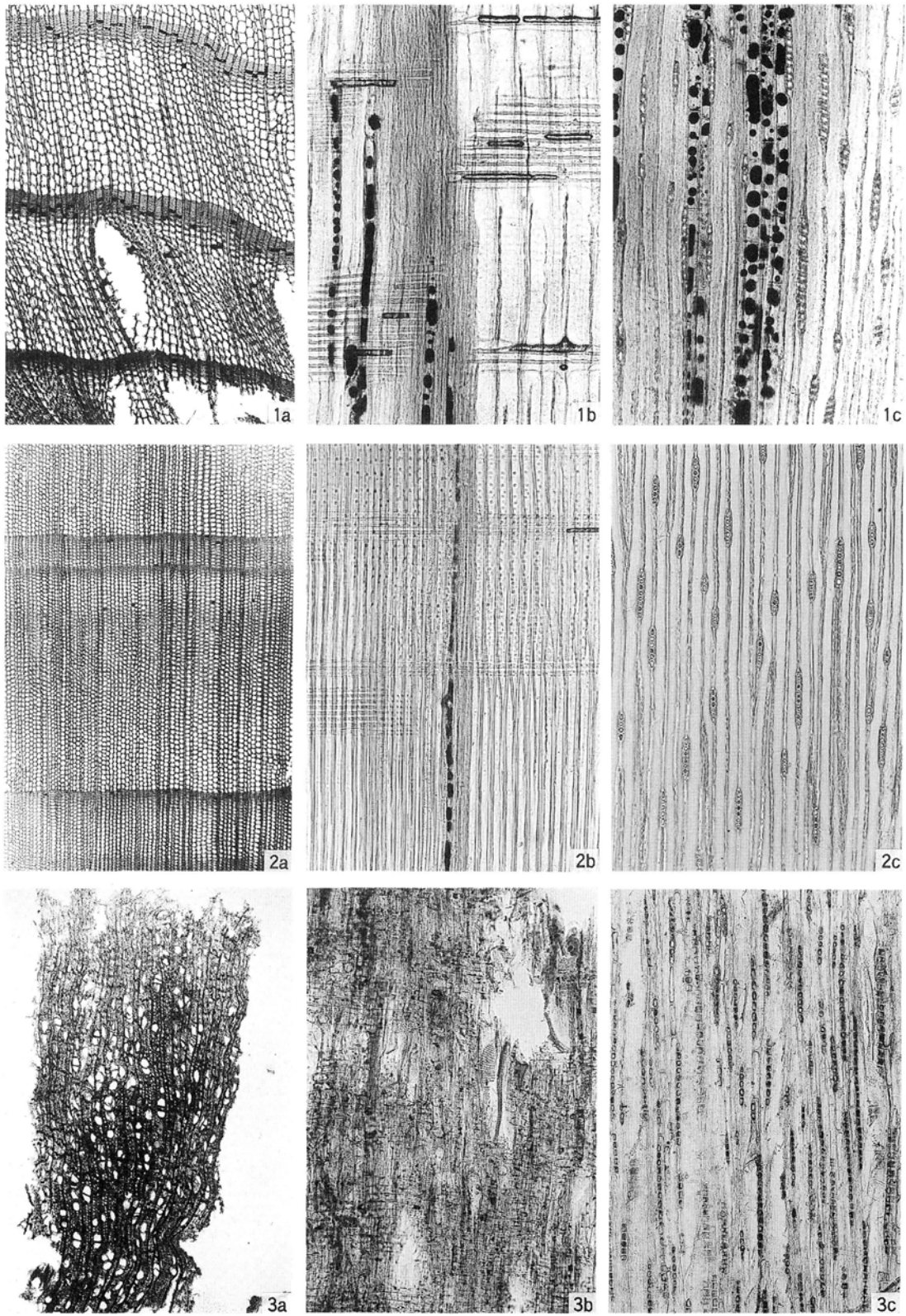
2082



2086

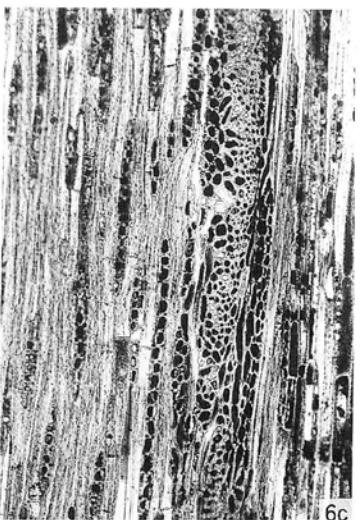
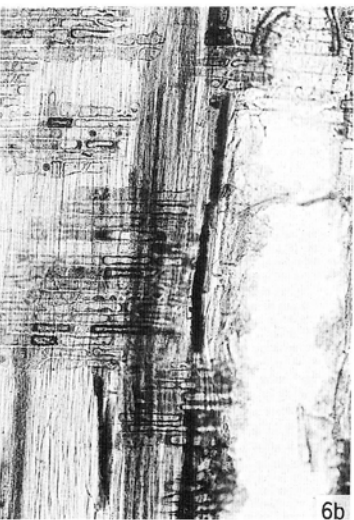
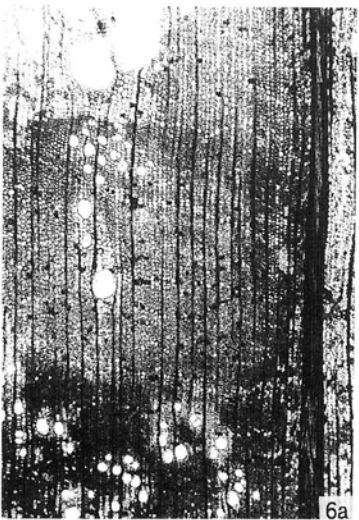
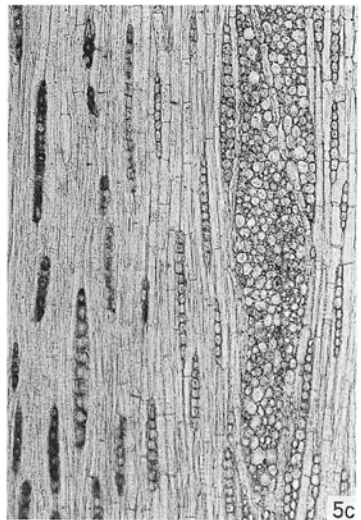
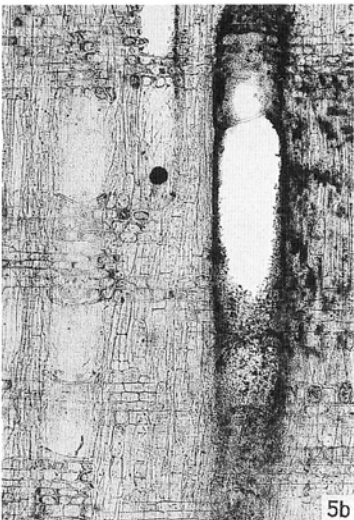
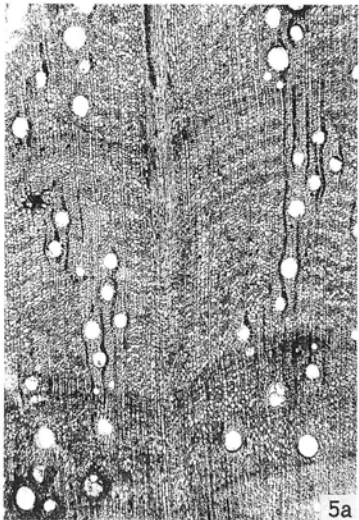
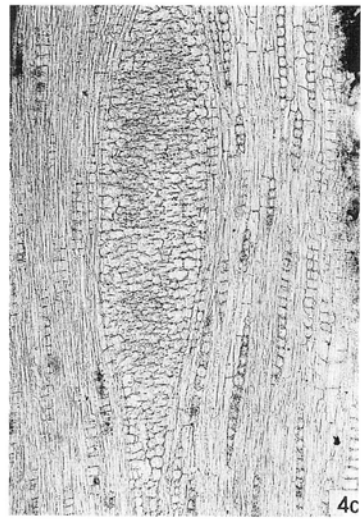
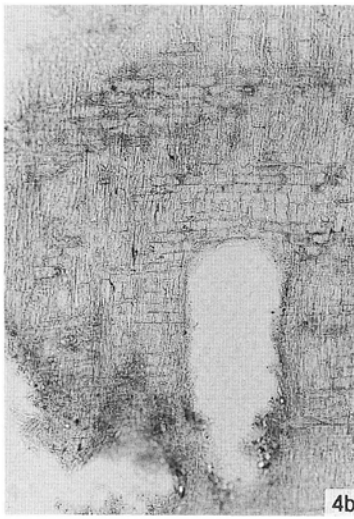
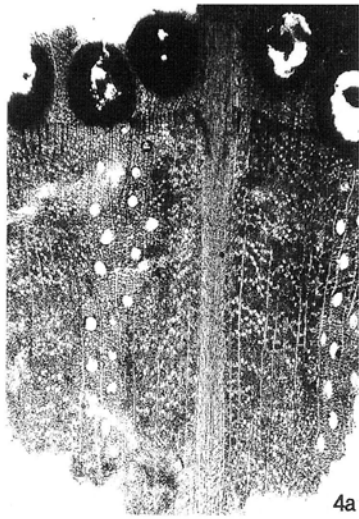


2087



1. スギ (試料番号53)
 2. ヒノキ属 (試料番号44)
 3. ハンノキ属 (試料番号6)
 a: 木口, b: 柾目, c: 板目

200 μm : a
 200 μm : b, c



4. コナラ属コナラ亜属クヌギ節 (試料番号18)

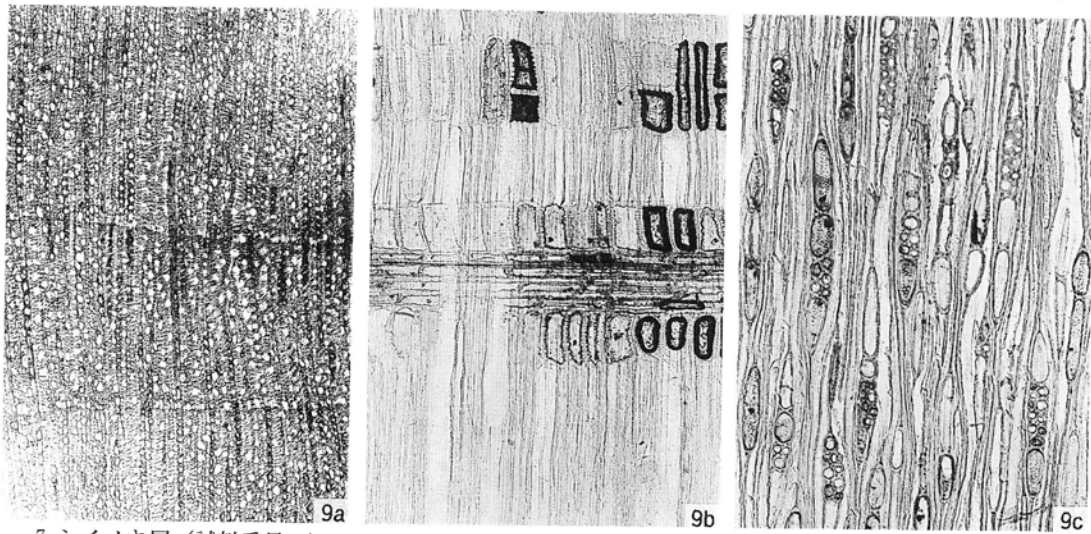
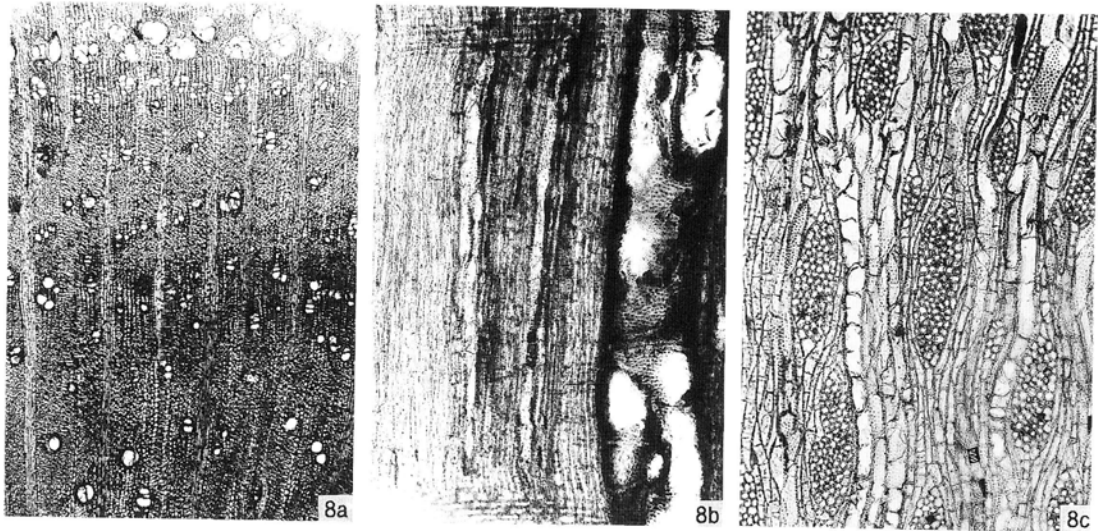
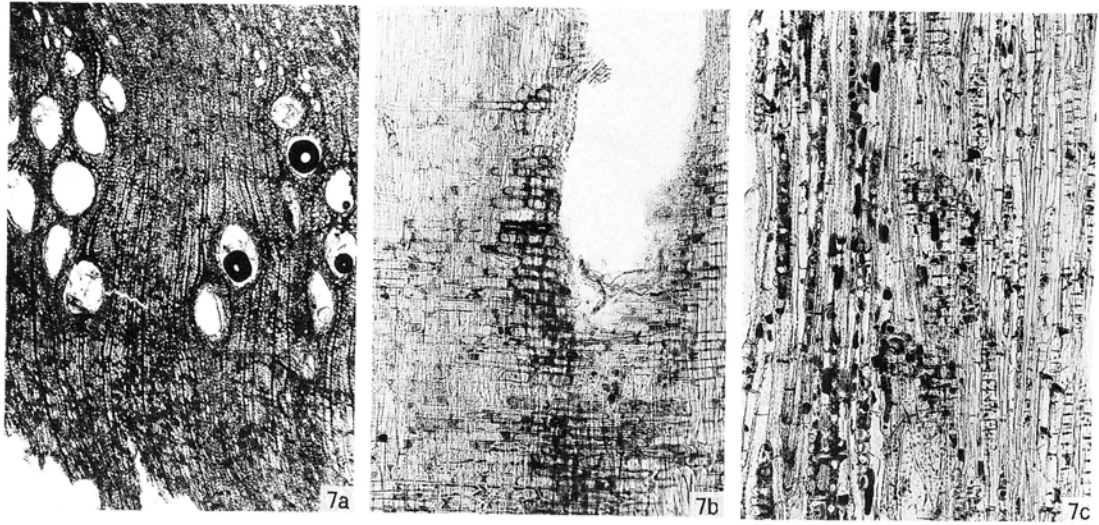
5. コナラ属アカガシ亜属 (試料番号2)

6. ツブラジイ (試料番号73)

a : 木口, b : 柁目, c : 板目

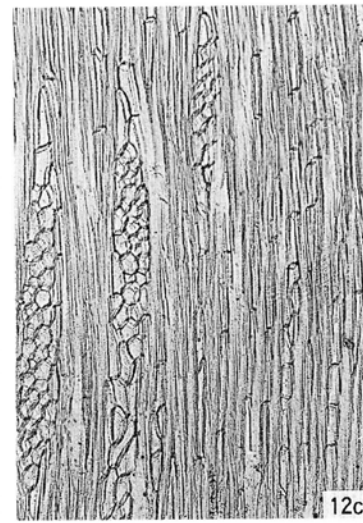
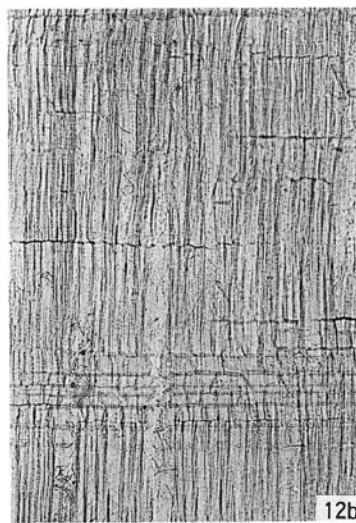
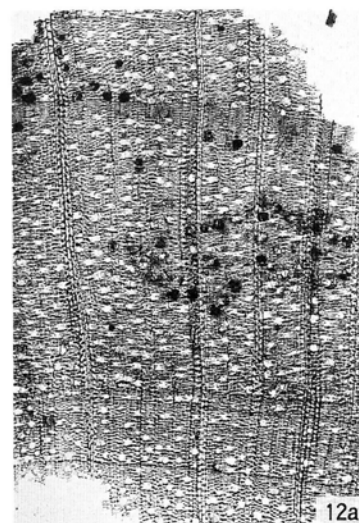
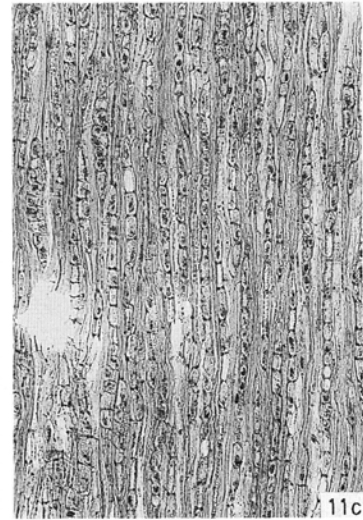
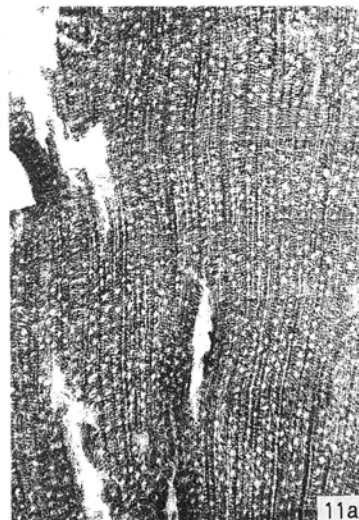
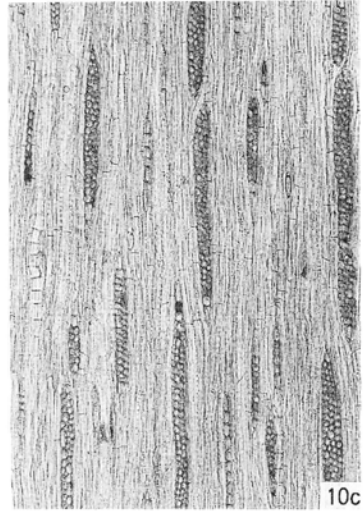
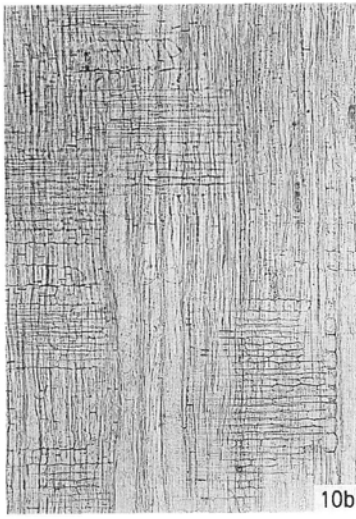
200 μm : a

200 μm : b, c



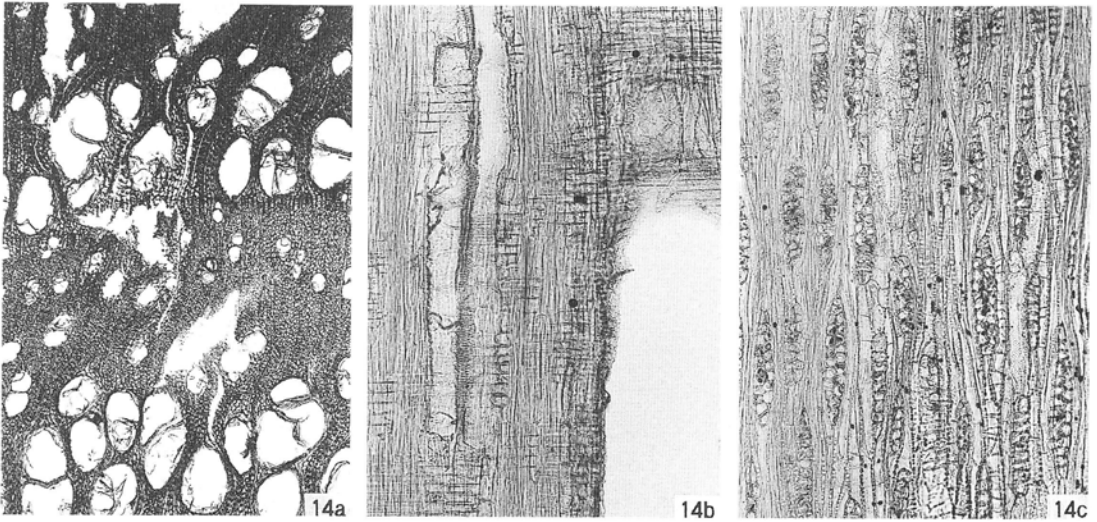
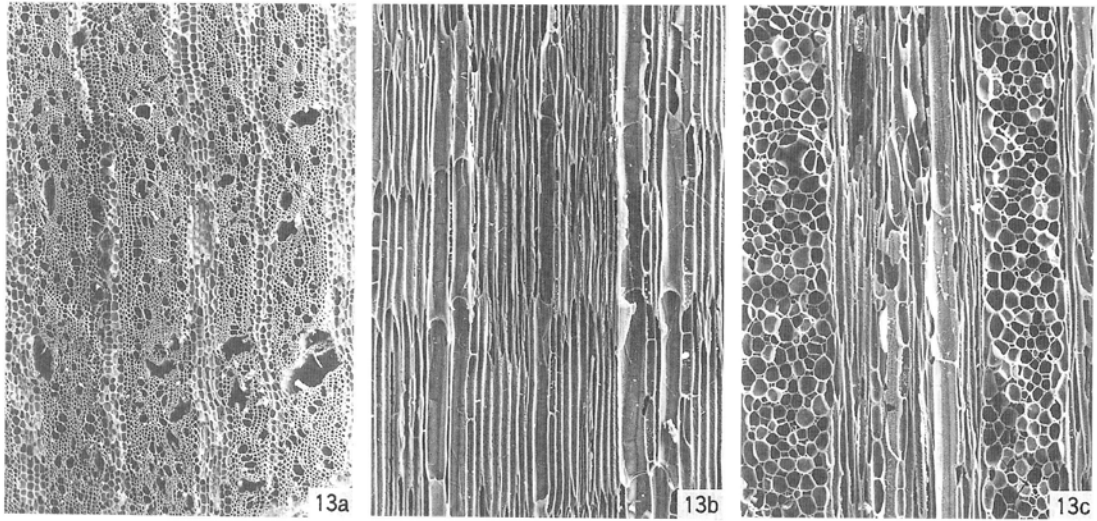
7. シイノキ属 (試料番号14)
 8. ヤマグワ (試料番号1)
 9. シキミ (試料番号20)
 a: 木口, b: 柾目, c: 板目

200 μm : a
 200 μm : b, c



10. クスノキ科 (試料番号7)
 11. サカキ (試料番号75)
 12. ウツギ属 (試料番号4)
 a: 木口, b: 柁目, c: 板目

200 μm : a
 200 μm : b, c



13. タイミンチバナ (試料番号82)
 14. トネリコ属 (試料番号9)
 a: 木口, b: 柁目, c: 板目

200 μm : a
 200 μm : b, c



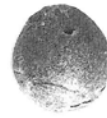
1



2



3



4

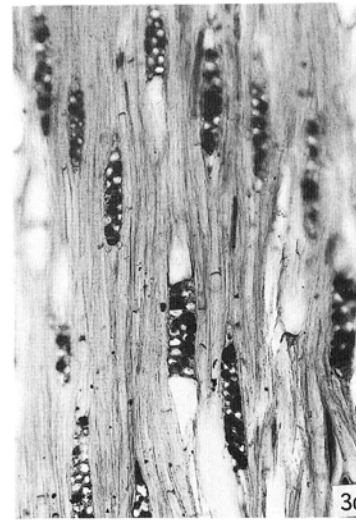
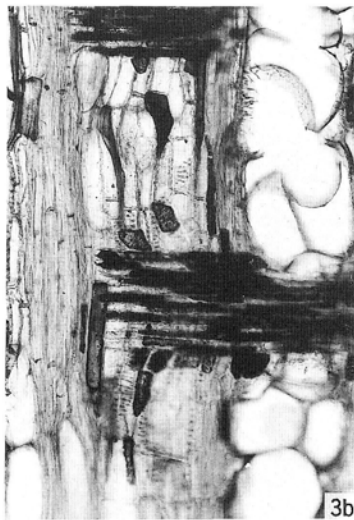
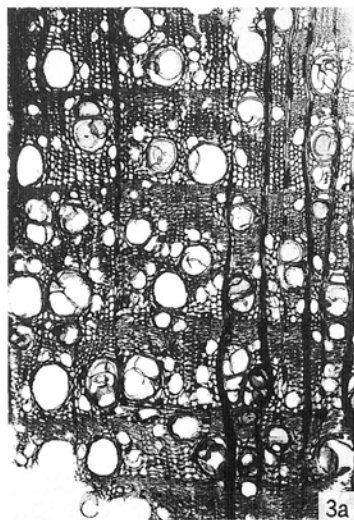
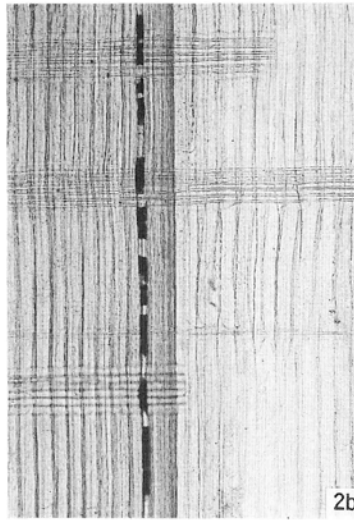
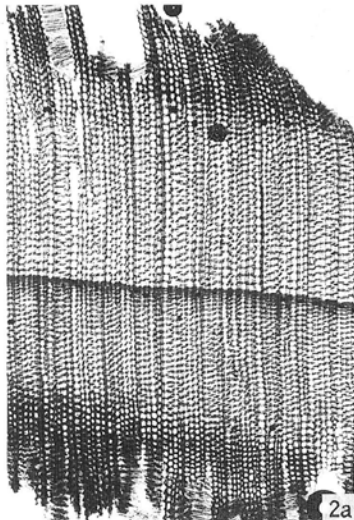
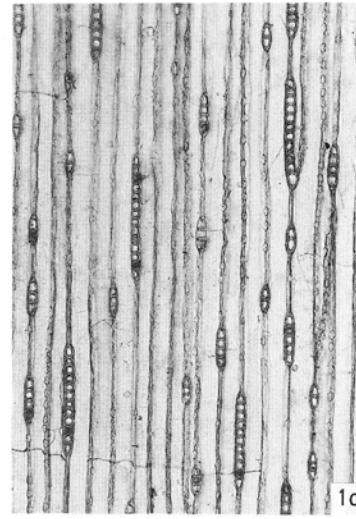
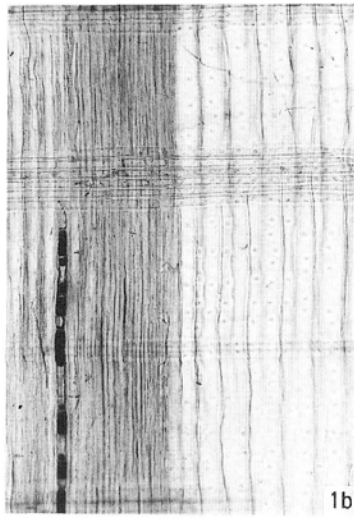
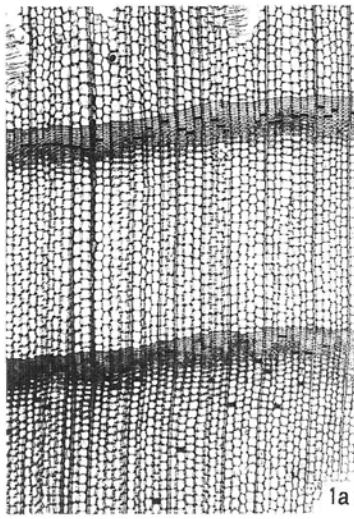
1cm
 (1)

1cm
 (2)

1cm
 (3, 4)

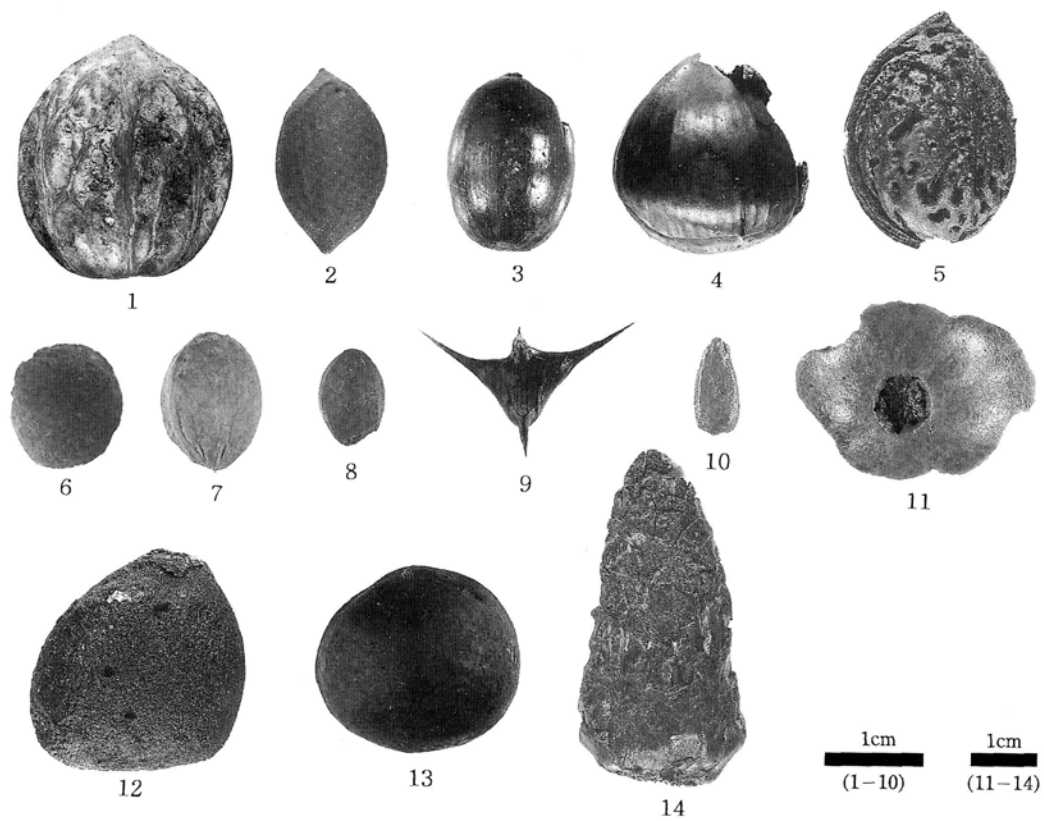
1. マツ属 (試料番号4) 2. モモ (試料番号5)
 3. エゴノキ属 (試料番号2) 4. ムクノキ (試料番号1)

第1次調査 木材・炭化材5, 種実遺体



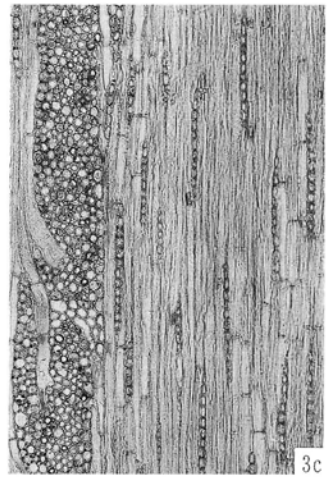
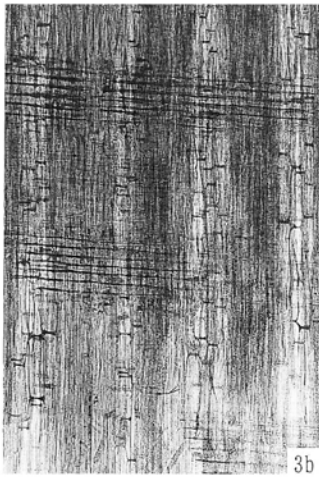
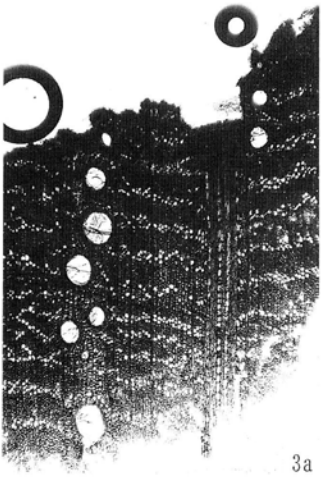
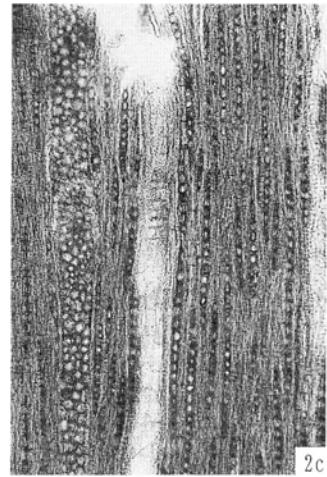
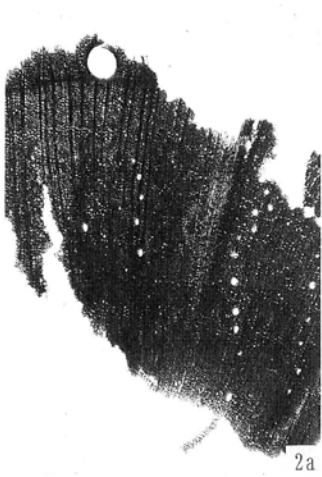
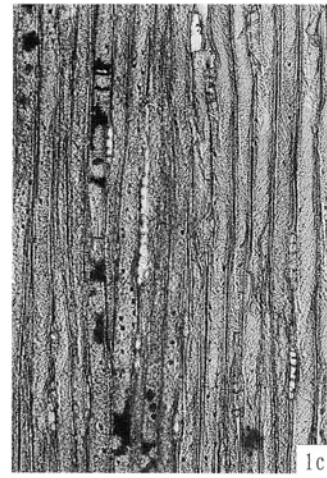
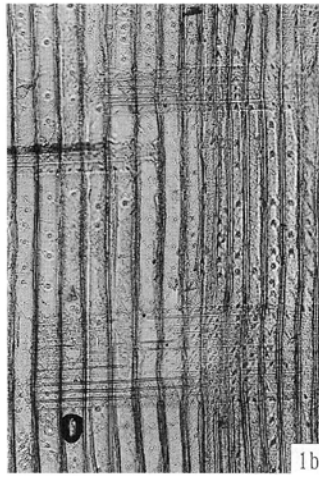
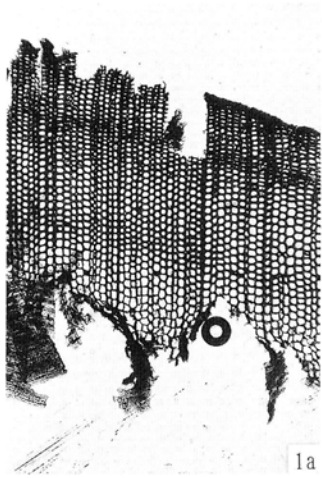
1. スギ (試料番号14)
 2. ヒノキ属 (試料番号19)
 3. クスノキ (試料番号11)
 a: 木口, b: 柁目, c: 板目

200 μ m : a
 200 μ m : b, c



- | | |
|----------------------|----------------------|
| 1. オニグルミ (試料番号4) | 2. カヤ (試料番号61) |
| 3. コナラ属 (試料番号3) | 4. クリ (試料番号34) |
| 5. モモ (試料番号74) | 6. ウメ (試料番号116) |
| 7. スモモ (試料番号28) | 8. エゴノキ属 (試料番号30) |
| 9. ヒメビシ (試料番号47) | 10. ヒョウタン類 (試料番号108) |
| 11. ヒョウタン類 (試料番号117) | 12. トチノキ (試料番号41) |
| 13. トチノキ (試料番号36) | 14. マツ属 (試料番号132) |

第1～3次調査 種実遺体



1. ヒノキ (試料番号140)
 2. コナラ属コナラ亜属クヌギ節 (試料番号139)
 3. コナラ属アカガシ亜属 (試料番号138)
 a: 木口, b: 柁目, c: 板目

200 μm : a
 200 μm : b, c

報告書抄録

ふりがな	ほりまちいせき							
書名	堀町遺跡							
副書名	一般国道42号松阪・多気バイパス建設地内埋蔵文化財発掘調査報告							
巻次	Ⅶ							
シリーズ名	三重県埋蔵文化財調査報告							
シリーズ番号	123-7							
編著者名	森川常厚・小濱 学							
編集機関	三重県埋蔵文化財センター							
所在地	〒515-0325 三重県多気郡明和町竹川503 TEL 0596-52-1732							
発行年月日	西暦 2000年 3月 31日							
ふりがな 所収遺跡名	ふりがな 所在地	コード		北緯 ° ' "	東経 ° ' "	調査期間	調査面積 m ²	調査原因
		市町村	遺跡番号					
ほりまちいせき 堀町遺跡	みえけんまつさかし 三重県松阪市 あさだちしょうあざほりまち 朝田町字堀町 ほか	204	646	34°34'03"	136°34'06"	第1次調査 19940826 ～19950220	3,000	一般国道42号 松阪・多気バ イパス建設事 業
						第2次調査 19950807 ～19960124	3,100	〃
						第3次調査 19960715 ～19970131	4,700 範囲確認 270	〃
						第4次調査 19970506 ～19971210	3,500	〃
所収遺跡名	種別	主な時代	主な遺構		主な遺物		特記事項	
堀町遺跡	集落跡	弥生時代後期 ～中世	掘立柱建物51棟 土坑163基 環濠 橋状遺構 溝49条 旧河道 墓壇2基 井戸29基 など		弥生土器 銅鐸形土製品 土師器 須恵器 山茶椀 線刻・墨書土器 木製農具 井戸杵 円形曲物 祭 祀木製品 (斎串・人形・舟形等) 石鏃 石庖丁 など			

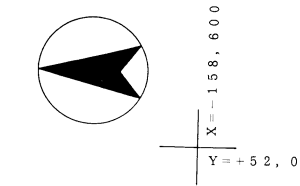
平成 12(2000) 年 3月に刊行されたものをもとに
平成 16(2004) 年 7月にデジタル化しました。

三重県埋蔵文化財調査報告 123-7

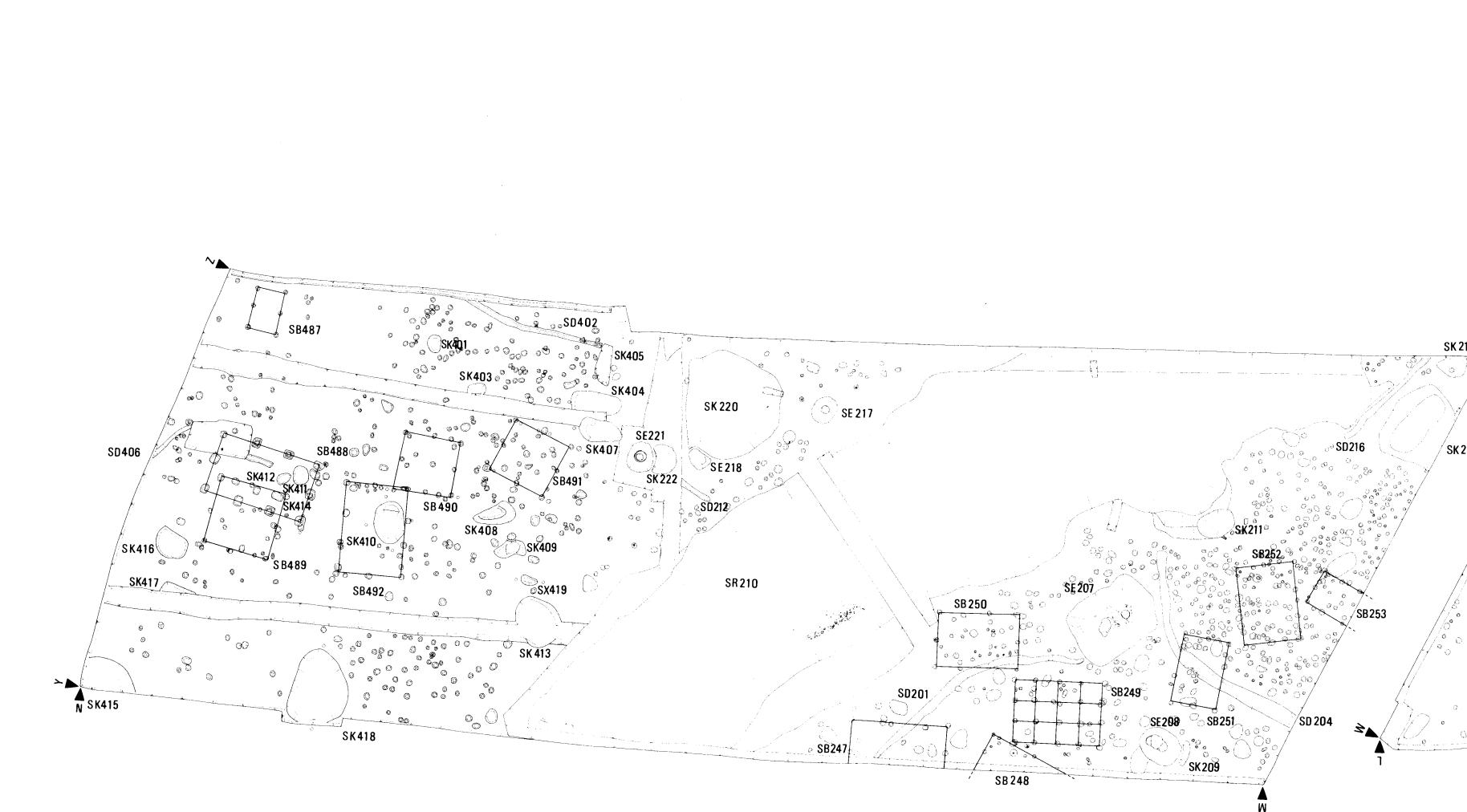
堀 町 遺 跡

2000. 3

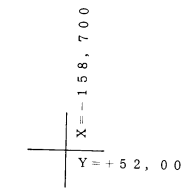
編 集 三重県埋蔵文化財センター
発 行
印 刷 光出版印刷株式会社



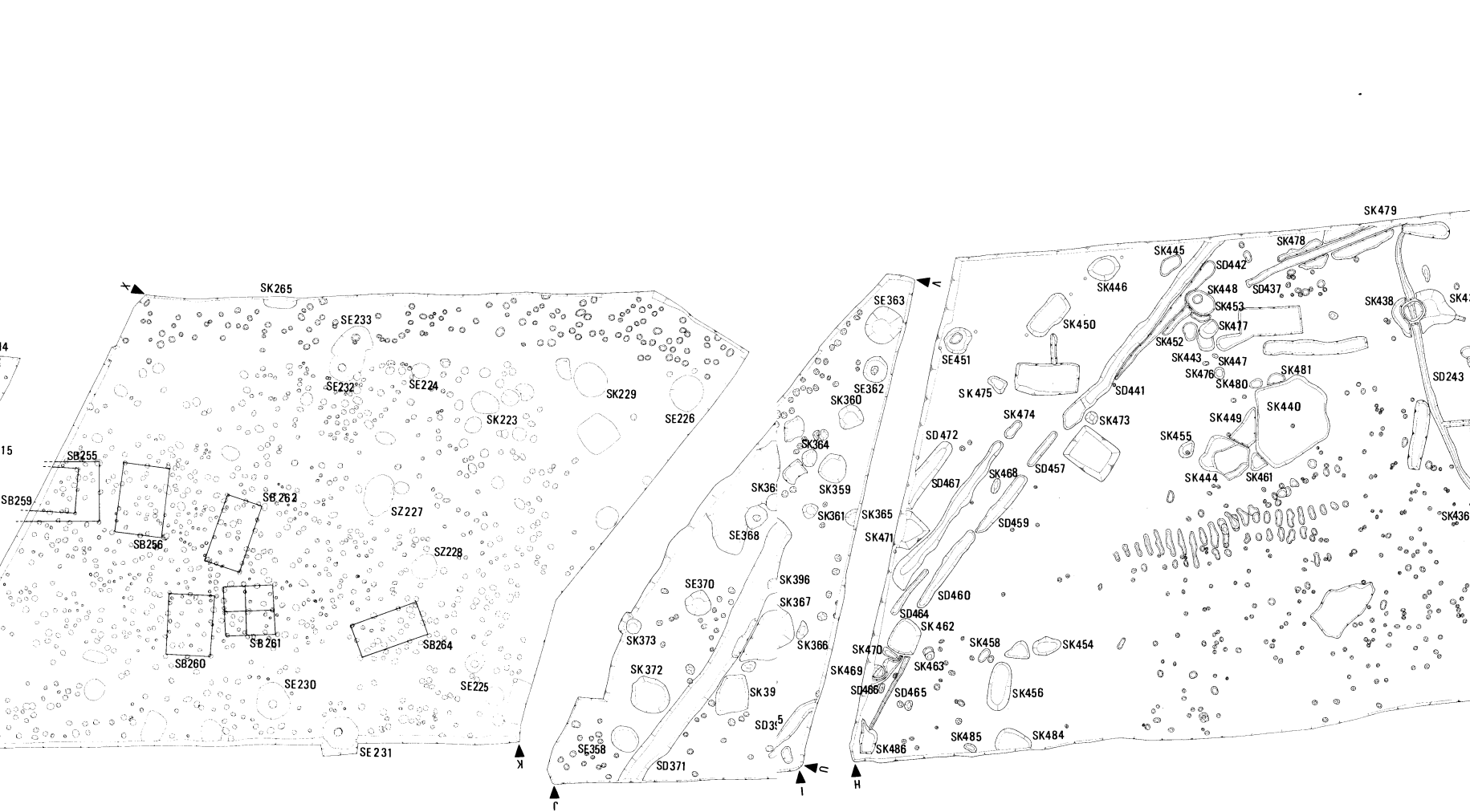
X=158,800
Y=52,000



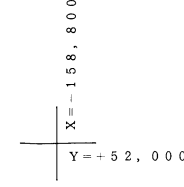
X=158,800
Y=52,000



X=158,700
Y=52,000



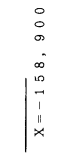
X=158,700
Y=52,000



X=158,600
Y=52,000



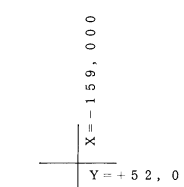
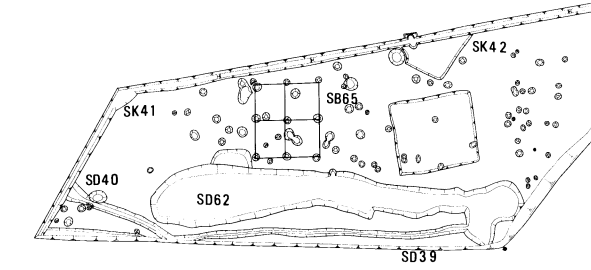
X=158,600
Y=52,000



X=158,500
Y=52,000



X=158,500
Y=52,000



X=158,400
Y=52,000



X=158,400
Y=52,000

堀町遺跡遺構平面図 (1:400)