

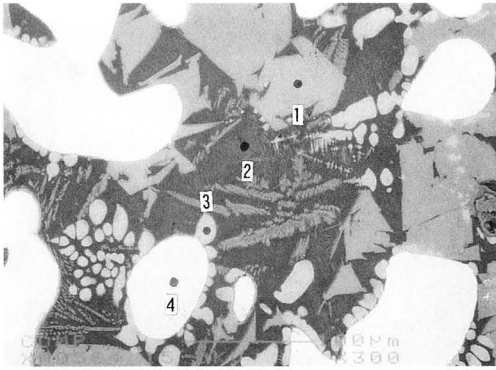
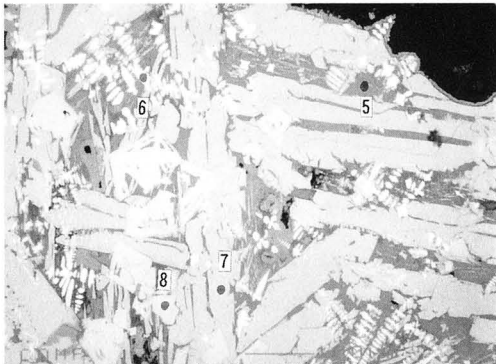

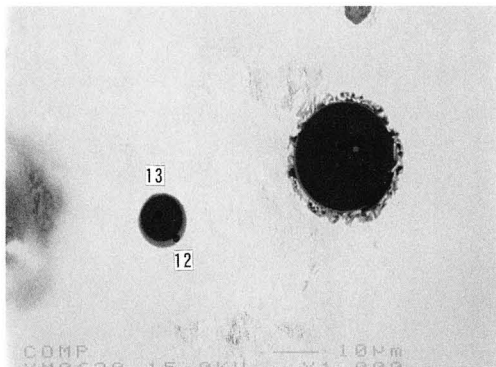
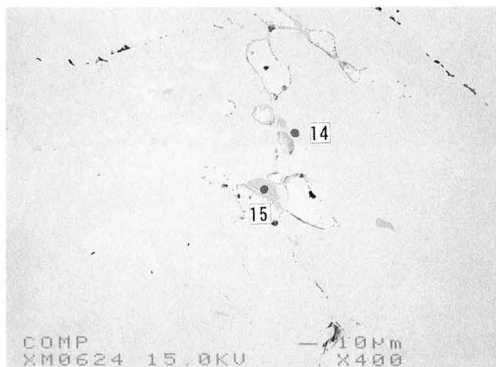
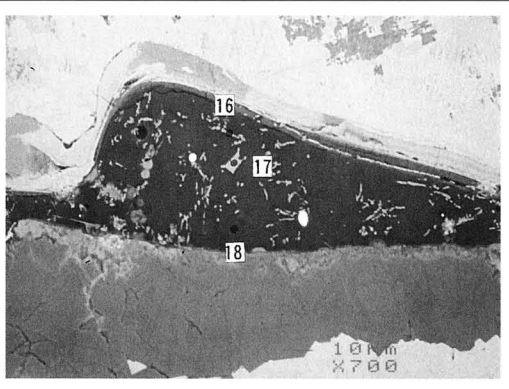
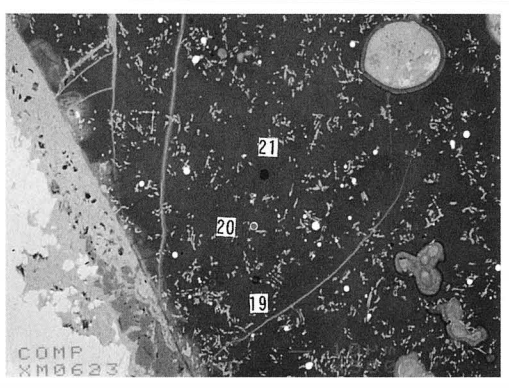
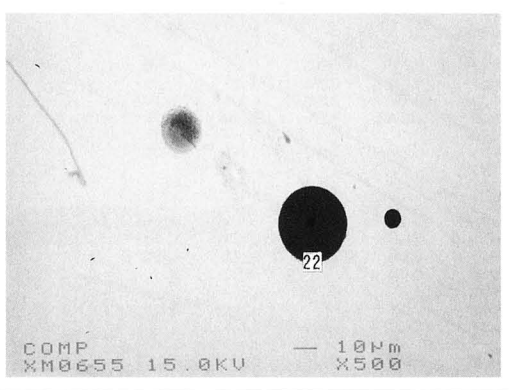
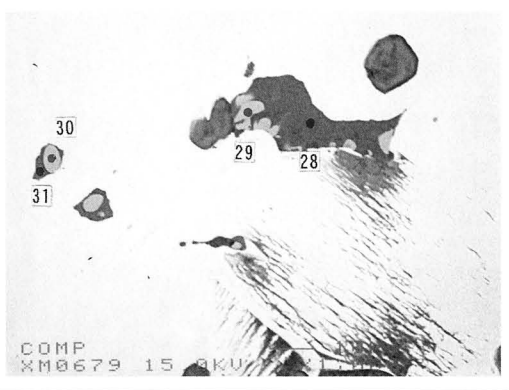
COMP ×300		<table border="1"> <thead> <tr> <th>Element</th> <th>1</th> <th>2</th> <th>3</th> <th>4</th> </tr> </thead> <tbody> <tr><td>F</td><td>-</td><td>-</td><td>-</td><td>-</td></tr> <tr><td>Na2O</td><td>-</td><td>4.021</td><td>-</td><td>0.019</td></tr> <tr><td>MgO</td><td>0.198</td><td>-</td><td>-</td><td>-</td></tr> <tr><td>Al2O3</td><td>8.804</td><td>18.994</td><td>0.430</td><td>0.013</td></tr> <tr><td>SiO2</td><td>0.272</td><td>44.917</td><td>0.588</td><td>0.066</td></tr> <tr><td>P2O5</td><td>0.002</td><td>0.218</td><td>-</td><td>0.035</td></tr> <tr><td>S</td><td>0.003</td><td>-</td><td>0.001</td><td>-</td></tr> <tr><td>K2O</td><td>-</td><td>13.406</td><td>0.149</td><td>-</td></tr> <tr><td>CaO</td><td>-</td><td>6.718</td><td>-</td><td>-</td></tr> <tr><td>TiO2</td><td>22.313</td><td>0.536</td><td>1.408</td><td>-</td></tr> <tr><td>Cr2O3</td><td>0.104</td><td>-</td><td>-</td><td>0.011</td></tr> <tr><td>MnO</td><td>0.401</td><td>0.141</td><td>0.165</td><td>-</td></tr> <tr><td>FeO</td><td>65.980</td><td>16.365</td><td>96.508</td><td>138.074</td></tr> <tr><td>ZrO2</td><td>0.107</td><td>0.305</td><td>0.117</td><td>0.068</td></tr> <tr><td>BaO</td><td>0.199</td><td>0.276</td><td>-</td><td>0.007</td></tr> <tr><td>V2O3</td><td>3.261</td><td>0.032</td><td>0.245</td><td>0.041</td></tr> <tr><td>CuO</td><td>-</td><td>-</td><td>-</td><td>-</td></tr> <tr><td>Total</td><td>101.643</td><td>106.012</td><td>99.611</td><td>138.334</td></tr> </tbody> </table>	Element	1	2	3	4	F	-	-	-	-	Na2O	-	4.021	-	0.019	MgO	0.198	-	-	-	Al2O3	8.804	18.994	0.430	0.013	SiO2	0.272	44.917	0.588	0.066	P2O5	0.002	0.218	-	0.035	S	0.003	-	0.001	-	K2O	-	13.406	0.149	-	CaO	-	6.718	-	-	TiO2	22.313	0.536	1.408	-	Cr2O3	0.104	-	-	0.011	MnO	0.401	0.141	0.165	-	FeO	65.980	16.365	96.508	138.074	ZrO2	0.107	0.305	0.117	0.068	BaO	0.199	0.276	-	0.007	V2O3	3.261	0.032	0.245	0.041	CuO	-	-	-	-	Total	101.643	106.012	99.611	138.334	TOT-4
Element	1	2	3	4																																																																																														
F	-	-	-	-																																																																																														
Na2O	-	4.021	-	0.019																																																																																														
MgO	0.198	-	-	-																																																																																														
Al2O3	8.804	18.994	0.430	0.013																																																																																														
SiO2	0.272	44.917	0.588	0.066																																																																																														
P2O5	0.002	0.218	-	0.035																																																																																														
S	0.003	-	0.001	-																																																																																														
K2O	-	13.406	0.149	-																																																																																														
CaO	-	6.718	-	-																																																																																														
TiO2	22.313	0.536	1.408	-																																																																																														
Cr2O3	0.104	-	-	0.011																																																																																														
MnO	0.401	0.141	0.165	-																																																																																														
FeO	65.980	16.365	96.508	138.074																																																																																														
ZrO2	0.107	0.305	0.117	0.068																																																																																														
BaO	0.199	0.276	-	0.007																																																																																														
V2O3	3.261	0.032	0.245	0.041																																																																																														
CuO	-	-	-	-																																																																																														
Total	101.643	106.012	99.611	138.334																																																																																														
COMP ×150		<table border="1"> <thead> <tr> <th>Element</th> <th>5</th> <th>6</th> <th>7</th> <th>8</th> </tr> </thead> <tbody> <tr><td>F</td><td>0.147</td><td>-</td><td>-</td><td>-</td></tr> <tr><td>Na2O</td><td>3.940</td><td>-</td><td>-</td><td>-</td></tr> <tr><td>MgO</td><td>0.019</td><td>0.035</td><td>1.637</td><td>0.308</td></tr> <tr><td>Al2O3</td><td>19.252</td><td>0.384</td><td>0.383</td><td>8.673</td></tr> <tr><td>SiO2</td><td>43.980</td><td>0.597</td><td>30.098</td><td>0.274</td></tr> <tr><td>P2O5</td><td>0.208</td><td>-</td><td>-</td><td>0.010</td></tr> <tr><td>S</td><td>0.055</td><td>0.001</td><td>0.005</td><td>-</td></tr> <tr><td>K2O</td><td>14.242</td><td>0.059</td><td>0.009</td><td>-</td></tr> <tr><td>CaO</td><td>6.341</td><td>-</td><td>0.283</td><td>-</td></tr> <tr><td>TiO2</td><td>0.412</td><td>1.172</td><td>0.338</td><td>22.053</td></tr> <tr><td>Cr2O3</td><td>0.054</td><td>0.067</td><td>0.016</td><td>0.371</td></tr> <tr><td>MnO</td><td>0.123</td><td>0.261</td><td>1.112</td><td>0.316</td></tr> <tr><td>FeO</td><td>17.143</td><td>98.327</td><td>67.624</td><td>64.085</td></tr> <tr><td>ZrO2</td><td>0.368</td><td>0.235</td><td>0.052</td><td>0.115</td></tr> <tr><td>BaO</td><td>0.188</td><td>0.049</td><td>0.059</td><td>0.162</td></tr> <tr><td>V2O3</td><td>0.045</td><td>0.115</td><td>0.006</td><td>5.461</td></tr> <tr><td>CuO</td><td>-</td><td>-</td><td>0.007</td><td>-</td></tr> <tr><td>Total</td><td>106.441</td><td>101.302</td><td>101.628</td><td>101.828</td></tr> </tbody> </table>	Element	5	6	7	8	F	0.147	-	-	-	Na2O	3.940	-	-	-	MgO	0.019	0.035	1.637	0.308	Al2O3	19.252	0.384	0.383	8.673	SiO2	43.980	0.597	30.098	0.274	P2O5	0.208	-	-	0.010	S	0.055	0.001	0.005	-	K2O	14.242	0.059	0.009	-	CaO	6.341	-	0.283	-	TiO2	0.412	1.172	0.338	22.053	Cr2O3	0.054	0.067	0.016	0.371	MnO	0.123	0.261	1.112	0.316	FeO	17.143	98.327	67.624	64.085	ZrO2	0.368	0.235	0.052	0.115	BaO	0.188	0.049	0.059	0.162	V2O3	0.045	0.115	0.006	5.461	CuO	-	-	0.007	-	Total	106.441	101.302	101.628	101.828	TOT-11
Element	5	6	7	8																																																																																														
F	0.147	-	-	-																																																																																														
Na2O	3.940	-	-	-																																																																																														
MgO	0.019	0.035	1.637	0.308																																																																																														
Al2O3	19.252	0.384	0.383	8.673																																																																																														
SiO2	43.980	0.597	30.098	0.274																																																																																														
P2O5	0.208	-	-	0.010																																																																																														
S	0.055	0.001	0.005	-																																																																																														
K2O	14.242	0.059	0.009	-																																																																																														
CaO	6.341	-	0.283	-																																																																																														
TiO2	0.412	1.172	0.338	22.053																																																																																														
Cr2O3	0.054	0.067	0.016	0.371																																																																																														
MnO	0.123	0.261	1.112	0.316																																																																																														
FeO	17.143	98.327	67.624	64.085																																																																																														
ZrO2	0.368	0.235	0.052	0.115																																																																																														
BaO	0.188	0.049	0.059	0.162																																																																																														
V2O3	0.045	0.115	0.006	5.461																																																																																														
CuO	-	-	0.007	-																																																																																														
Total	106.441	101.302	101.628	101.828																																																																																														
COMP ×400		<table border="1"> <thead> <tr> <th>Element</th> <th>9</th> <th>10</th> <th>11</th> </tr> </thead> <tbody> <tr><td>F</td><td>-</td><td>-</td><td>-</td></tr> <tr><td>Na2O</td><td>-</td><td>-</td><td>0.182</td></tr> <tr><td>MgO</td><td>0.042</td><td>0.210</td><td>0.011</td></tr> <tr><td>Al2O3</td><td>0.298</td><td>0.207</td><td>20.474</td></tr> <tr><td>SiO2</td><td>0.281</td><td>29.966</td><td>50.244</td></tr> <tr><td>P2O5</td><td>-</td><td>-</td><td>0.050</td></tr> <tr><td>S</td><td>-</td><td>0.002</td><td>0.001</td></tr> <tr><td>K2O</td><td>-</td><td>-</td><td>8.710</td></tr> <tr><td>CaO</td><td>-</td><td>0.025</td><td>2.092</td></tr> <tr><td>TiO2</td><td>0.037</td><td>-</td><td>0.057</td></tr> <tr><td>Cr2O3</td><td>-</td><td>-</td><td>0.063</td></tr> <tr><td>MnO</td><td>0.050</td><td>0.283</td><td>0.051</td></tr> <tr><td>FeO</td><td>99.918</td><td>71.259</td><td>18.382</td></tr> <tr><td>ZrO2</td><td>0.069</td><td>0.113</td><td>-</td></tr> <tr><td>BaO</td><td>-</td><td>0.004</td><td>0.278</td></tr> <tr><td>V2O3</td><td>0.005</td><td>0.084</td><td>-</td></tr> <tr><td>CuO</td><td>0.056</td><td>-</td><td>-</td></tr> <tr><td>Total</td><td>100.756</td><td>102.153</td><td>100.595</td></tr> </tbody> </table>	Element	9	10	11	F	-	-	-	Na2O	-	-	0.182	MgO	0.042	0.210	0.011	Al2O3	0.298	0.207	20.474	SiO2	0.281	29.966	50.244	P2O5	-	-	0.050	S	-	0.002	0.001	K2O	-	-	8.710	CaO	-	0.025	2.092	TiO2	0.037	-	0.057	Cr2O3	-	-	0.063	MnO	0.050	0.283	0.051	FeO	99.918	71.259	18.382	ZrO2	0.069	0.113	-	BaO	-	0.004	0.278	V2O3	0.005	0.084	-	CuO	0.056	-	-	Total	100.756	102.153	100.595	TOT-19																			
Element	9	10	11																																																																																															
F	-	-	-																																																																																															
Na2O	-	-	0.182																																																																																															
MgO	0.042	0.210	0.011																																																																																															
Al2O3	0.298	0.207	20.474																																																																																															
SiO2	0.281	29.966	50.244																																																																																															
P2O5	-	-	0.050																																																																																															
S	-	0.002	0.001																																																																																															
K2O	-	-	8.710																																																																																															
CaO	-	0.025	2.092																																																																																															
TiO2	0.037	-	0.057																																																																																															
Cr2O3	-	-	0.063																																																																																															
MnO	0.050	0.283	0.051																																																																																															
FeO	99.918	71.259	18.382																																																																																															
ZrO2	0.069	0.113	-																																																																																															
BaO	-	0.004	0.278																																																																																															
V2O3	0.005	0.084	-																																																																																															
CuO	0.056	-	-																																																																																															
Total	100.756	102.153	100.595																																																																																															
COMP ×1000		<table border="1"> <thead> <tr> <th>Element</th> <th>12</th> <th>13</th> </tr> </thead> <tbody> <tr><td>F</td><td>0.047</td><td>-</td></tr> <tr><td>Na2O</td><td>0.464</td><td>0.749</td></tr> <tr><td>MgO</td><td>1.880</td><td>1.464</td></tr> <tr><td>Al2O3</td><td>11.886</td><td>18.869</td></tr> <tr><td>SiO2</td><td>30.559</td><td>57.770</td></tr> <tr><td>P2O5</td><td>0.002</td><td>-</td></tr> <tr><td>S</td><td>0.015</td><td>0.004</td></tr> <tr><td>K2O</td><td>6.741</td><td>13.091</td></tr> <tr><td>CaO</td><td>2.974</td><td>4.691</td></tr> <tr><td>TiO2</td><td>44.123</td><td>5.962</td></tr> <tr><td>Cr2O3</td><td>-</td><td>-</td></tr> <tr><td>MnO</td><td>1.086</td><td>0.734</td></tr> <tr><td>FeO</td><td>8.729</td><td>2.159</td></tr> <tr><td>ZrO2</td><td>2.023</td><td>0.239</td></tr> <tr><td>BaO</td><td>0.386</td><td>0.094</td></tr> <tr><td>V2O3</td><td>0.412</td><td>0.007</td></tr> <tr><td>CuO</td><td>-</td><td>-</td></tr> <tr><td>Total</td><td>111.303</td><td>105.832</td></tr> </tbody> </table>	Element	12	13	F	0.047	-	Na2O	0.464	0.749	MgO	1.880	1.464	Al2O3	11.886	18.869	SiO2	30.559	57.770	P2O5	0.002	-	S	0.015	0.004	K2O	6.741	13.091	CaO	2.974	4.691	TiO2	44.123	5.962	Cr2O3	-	-	MnO	1.086	0.734	FeO	8.729	2.159	ZrO2	2.023	0.239	BaO	0.386	0.094	V2O3	0.412	0.007	CuO	-	-	Total	111.303	105.832	TOT-19																																						
Element	12	13																																																																																																
F	0.047	-																																																																																																
Na2O	0.464	0.749																																																																																																
MgO	1.880	1.464																																																																																																
Al2O3	11.886	18.869																																																																																																
SiO2	30.559	57.770																																																																																																
P2O5	0.002	-																																																																																																
S	0.015	0.004																																																																																																
K2O	6.741	13.091																																																																																																
CaO	2.974	4.691																																																																																																
TiO2	44.123	5.962																																																																																																
Cr2O3	-	-																																																																																																
MnO	1.086	0.734																																																																																																
FeO	8.729	2.159																																																																																																
ZrO2	2.023	0.239																																																																																																
BaO	0.386	0.094																																																																																																
V2O3	0.412	0.007																																																																																																
CuO	-	-																																																																																																
Total	111.303	105.832																																																																																																
COMP ×400		<table border="1"> <thead> <tr> <th>Element</th> <th>14</th> <th>15</th> </tr> </thead> <tbody> <tr><td>F</td><td>-</td><td>-</td></tr> <tr><td>Na2O</td><td>-</td><td>-</td></tr> <tr><td>MgO</td><td>-</td><td>0.038</td></tr> <tr><td>Al2O3</td><td>-</td><td>-</td></tr> <tr><td>SiO2</td><td>0.008</td><td>36.016</td></tr> <tr><td>P2O5</td><td>1.118</td><td>-</td></tr> <tr><td>S</td><td>0.023</td><td>36.016</td></tr> <tr><td>K2O</td><td>-</td><td>-</td></tr> <tr><td>CaO</td><td>-</td><td>-</td></tr> <tr><td>TiO2</td><td>-</td><td>0.155</td></tr> <tr><td>Cr2O3</td><td>0.081</td><td>-</td></tr> <tr><td>MnO</td><td>-</td><td>0.145</td></tr> <tr><td>FeO</td><td>122.798</td><td>86.186</td></tr> <tr><td>ZrO2</td><td>-</td><td>0.009</td></tr> <tr><td>BaO</td><td>0.020</td><td>0.020</td></tr> <tr><td>V2O3</td><td>0.057</td><td>-</td></tr> <tr><td>CuO</td><td>-</td><td>0.146</td></tr> <tr><td>Total</td><td>124.099</td><td>113.731</td></tr> </tbody> </table>	Element	14	15	F	-	-	Na2O	-	-	MgO	-	0.038	Al2O3	-	-	SiO2	0.008	36.016	P2O5	1.118	-	S	0.023	36.016	K2O	-	-	CaO	-	-	TiO2	-	0.155	Cr2O3	0.081	-	MnO	-	0.145	FeO	122.798	86.186	ZrO2	-	0.009	BaO	0.020	0.020	V2O3	0.057	-	CuO	-	0.146	Total	124.099	113.731	TOT-21																																						
Element	14	15																																																																																																
F	-	-																																																																																																
Na2O	-	-																																																																																																
MgO	-	0.038																																																																																																
Al2O3	-	-																																																																																																
SiO2	0.008	36.016																																																																																																
P2O5	1.118	-																																																																																																
S	0.023	36.016																																																																																																
K2O	-	-																																																																																																
CaO	-	-																																																																																																
TiO2	-	0.155																																																																																																
Cr2O3	0.081	-																																																																																																
MnO	-	0.145																																																																																																
FeO	122.798	86.186																																																																																																
ZrO2	-	0.009																																																																																																
BaO	0.020	0.020																																																																																																
V2O3	0.057	-																																																																																																
CuO	-	0.146																																																																																																
Total	124.099	113.731																																																																																																

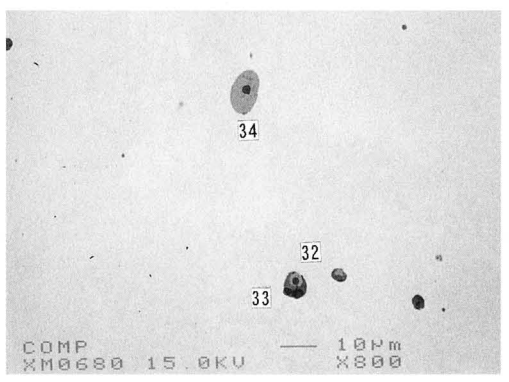
Photo.32 EPMA調査結果
 滓部鉱物相及び鉄中非金属介在物の反射電子像と定量分析値

<p>COMP X700</p>		<table border="1"> <thead> <tr> <th>Element</th> <th>16</th> <th>17</th> <th>18</th> </tr> </thead> <tbody> <tr><td>F</td><td>-</td><td>0.266</td><td>-</td></tr> <tr><td>Na2O</td><td>0.623</td><td>0.021</td><td>0.831</td></tr> <tr><td>MgO</td><td>1.739</td><td>2.686</td><td>1.038</td></tr> <tr><td>Al2O3</td><td>9.544</td><td>4.064</td><td>14.669</td></tr> <tr><td>SiO2</td><td>38.098</td><td>1.269</td><td>60.526</td></tr> <tr><td>P2O5</td><td>-</td><td>-</td><td>-</td></tr> <tr><td>S</td><td>-</td><td>-</td><td>0.003</td></tr> <tr><td>K2O</td><td>5.390</td><td>0.030</td><td>8.600</td></tr> <tr><td>CaO</td><td>4.011</td><td>0.021</td><td>5.548</td></tr> <tr><td>TiO2</td><td>18.788</td><td>26.437</td><td>2.615</td></tr> <tr><td>Cr2O3</td><td>0.099</td><td>0.658</td><td>-</td></tr> <tr><td>MnO</td><td>2.982</td><td>4.732</td><td>1.417</td></tr> <tr><td>FeO</td><td>17.722</td><td>43.611</td><td>6.942</td></tr> <tr><td>ZrO2</td><td>0.322</td><td>0.038</td><td>0.120</td></tr> <tr><td>BaO</td><td>0.119</td><td>0.150</td><td>0.161</td></tr> <tr><td>V2O3</td><td>1.606</td><td>16.482</td><td>0.079</td></tr> <tr><td>CuO</td><td>0.021</td><td>-</td><td>0.039</td></tr> <tr><td colspan="4">-----</td></tr> <tr><td>Total</td><td>101.064</td><td>100.353</td><td>102.587</td></tr> </tbody> </table>	Element	16	17	18	F	-	0.266	-	Na2O	0.623	0.021	0.831	MgO	1.739	2.686	1.038	Al2O3	9.544	4.064	14.669	SiO2	38.098	1.269	60.526	P2O5	-	-	-	S	-	-	0.003	K2O	5.390	0.030	8.600	CaO	4.011	0.021	5.548	TiO2	18.788	26.437	2.615	Cr2O3	0.099	0.658	-	MnO	2.982	4.732	1.417	FeO	17.722	43.611	6.942	ZrO2	0.322	0.038	0.120	BaO	0.119	0.150	0.161	V2O3	1.606	16.482	0.079	CuO	0.021	-	0.039	-----				Total	101.064	100.353	102.587	<p>TOT-22</p>																				
Element	16	17	18																																																																																																				
F	-	0.266	-																																																																																																				
Na2O	0.623	0.021	0.831																																																																																																				
MgO	1.739	2.686	1.038																																																																																																				
Al2O3	9.544	4.064	14.669																																																																																																				
SiO2	38.098	1.269	60.526																																																																																																				
P2O5	-	-	-																																																																																																				
S	-	-	0.003																																																																																																				
K2O	5.390	0.030	8.600																																																																																																				
CaO	4.011	0.021	5.548																																																																																																				
TiO2	18.788	26.437	2.615																																																																																																				
Cr2O3	0.099	0.658	-																																																																																																				
MnO	2.982	4.732	1.417																																																																																																				
FeO	17.722	43.611	6.942																																																																																																				
ZrO2	0.322	0.038	0.120																																																																																																				
BaO	0.119	0.150	0.161																																																																																																				
V2O3	1.606	16.482	0.079																																																																																																				
CuO	0.021	-	0.039																																																																																																				

Total	101.064	100.353	102.587																																																																																																				
<p>COMP X500</p>		<table border="1"> <thead> <tr> <th>Element</th> <th>19</th> <th>20</th> <th>21</th> </tr> </thead> <tbody> <tr><td>F</td><td>-</td><td>-</td><td>-</td></tr> <tr><td>Na2O</td><td>0.439</td><td>0.020</td><td>0.765</td></tr> <tr><td>MgO</td><td>2.116</td><td>0.035</td><td>0.821</td></tr> <tr><td>Al2O3</td><td>6.577</td><td>0.167</td><td>15.427</td></tr> <tr><td>SiO2</td><td>23.572</td><td>0.711</td><td>60.414</td></tr> <tr><td>P2O5</td><td>-</td><td>-</td><td>-</td></tr> <tr><td>S</td><td>-</td><td>0.007</td><td>0.013</td></tr> <tr><td>K2O</td><td>0.442</td><td>-</td><td>7.769</td></tr> <tr><td>CaO</td><td>1.561</td><td>-</td><td>4.822</td></tr> <tr><td>TiO2</td><td>33.684</td><td>0.310</td><td>2.458</td></tr> <tr><td>Cr2O3</td><td>0.121</td><td>-</td><td>-</td></tr> <tr><td>MnO</td><td>3.589</td><td>0.142</td><td>1.348</td></tr> <tr><td>FeO</td><td>27.691</td><td>135.784</td><td>7.477</td></tr> <tr><td>ZrO2</td><td>0.110</td><td>0.089</td><td>0.131</td></tr> <tr><td>BaO</td><td>0.398</td><td>-</td><td>0.002</td></tr> <tr><td>V2O3</td><td>2.570</td><td>0.052</td><td>0.079</td></tr> <tr><td>CuO</td><td>0.003</td><td>0.013</td><td>-</td></tr> <tr><td colspan="4">-----</td></tr> <tr><td>Total</td><td>102.873</td><td>137.328</td><td>101.523</td></tr> </tbody> </table>	Element	19	20	21	F	-	-	-	Na2O	0.439	0.020	0.765	MgO	2.116	0.035	0.821	Al2O3	6.577	0.167	15.427	SiO2	23.572	0.711	60.414	P2O5	-	-	-	S	-	0.007	0.013	K2O	0.442	-	7.769	CaO	1.561	-	4.822	TiO2	33.684	0.310	2.458	Cr2O3	0.121	-	-	MnO	3.589	0.142	1.348	FeO	27.691	135.784	7.477	ZrO2	0.110	0.089	0.131	BaO	0.398	-	0.002	V2O3	2.570	0.052	0.079	CuO	0.003	0.013	-	-----				Total	102.873	137.328	101.523	<p>TOT-22</p>																				
Element	19	20	21																																																																																																				
F	-	-	-																																																																																																				
Na2O	0.439	0.020	0.765																																																																																																				
MgO	2.116	0.035	0.821																																																																																																				
Al2O3	6.577	0.167	15.427																																																																																																				
SiO2	23.572	0.711	60.414																																																																																																				
P2O5	-	-	-																																																																																																				
S	-	0.007	0.013																																																																																																				
K2O	0.442	-	7.769																																																																																																				
CaO	1.561	-	4.822																																																																																																				
TiO2	33.684	0.310	2.458																																																																																																				
Cr2O3	0.121	-	-																																																																																																				
MnO	3.589	0.142	1.348																																																																																																				
FeO	27.691	135.784	7.477																																																																																																				
ZrO2	0.110	0.089	0.131																																																																																																				
BaO	0.398	-	0.002																																																																																																				
V2O3	2.570	0.052	0.079																																																																																																				
CuO	0.003	0.013	-																																																																																																				

Total	102.873	137.328	101.523																																																																																																				
<p>COMP X500</p>		<table border="1"> <thead> <tr> <th>Element</th> <th>22</th> </tr> </thead> <tbody> <tr><td>F</td><td>0.043</td></tr> <tr><td>Na2O</td><td>0.477</td></tr> <tr><td>MgO</td><td>1.243</td></tr> <tr><td>Al2O3</td><td>16.088</td></tr> <tr><td>SiO2</td><td>63.996</td></tr> <tr><td>P2O5</td><td>-</td></tr> <tr><td>S</td><td>0.004</td></tr> <tr><td>K2O</td><td>6.916</td></tr> <tr><td>CaO</td><td>3.739</td></tr> <tr><td>TiO2</td><td>7.358</td></tr> <tr><td>Cr2O3</td><td>-</td></tr> <tr><td>MnO</td><td>1.402</td></tr> <tr><td>FeO</td><td>2.553</td></tr> <tr><td>ZrO2</td><td>0.298</td></tr> <tr><td>BaO</td><td>0.038</td></tr> <tr><td>V2O3</td><td>0.100</td></tr> <tr><td>CuO</td><td>-</td></tr> <tr><td colspan="2">-----</td></tr> <tr><td>Total</td><td>104.236</td></tr> </tbody> </table>	Element	22	F	0.043	Na2O	0.477	MgO	1.243	Al2O3	16.088	SiO2	63.996	P2O5	-	S	0.004	K2O	6.916	CaO	3.739	TiO2	7.358	Cr2O3	-	MnO	1.402	FeO	2.553	ZrO2	0.298	BaO	0.038	V2O3	0.100	CuO	-	-----		Total	104.236	<p>TOT-23</p>																																																												
Element	22																																																																																																						
F	0.043																																																																																																						
Na2O	0.477																																																																																																						
MgO	1.243																																																																																																						
Al2O3	16.088																																																																																																						
SiO2	63.996																																																																																																						
P2O5	-																																																																																																						
S	0.004																																																																																																						
K2O	6.916																																																																																																						
CaO	3.739																																																																																																						
TiO2	7.358																																																																																																						
Cr2O3	-																																																																																																						
MnO	1.402																																																																																																						
FeO	2.553																																																																																																						
ZrO2	0.298																																																																																																						
BaO	0.038																																																																																																						
V2O3	0.100																																																																																																						
CuO	-																																																																																																						

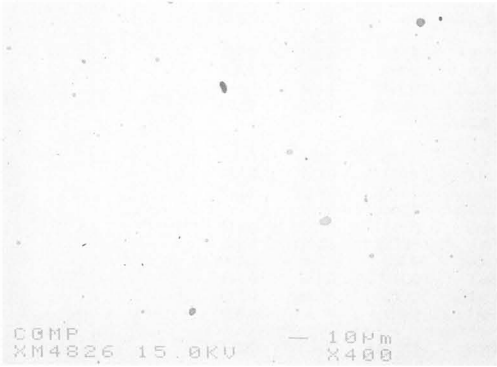



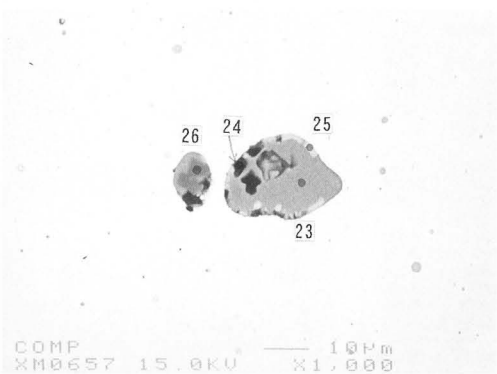
Total	104.236																																																																																																						
<p>COMP X1000</p>		<table border="1"> <thead> <tr> <th>Element</th> <th>28</th> <th>29</th> <th>30</th> <th>31</th> </tr> </thead> <tbody> <tr><td>F</td><td>-</td><td>-</td><td>-</td><td>-</td></tr> <tr><td>Na2O</td><td>0.923</td><td>0.019</td><td>-</td><td>0.602</td></tr> <tr><td>MgO</td><td>0.528</td><td>0.333</td><td>0.333</td><td>0.817</td></tr> <tr><td>Al2O3</td><td>8.382</td><td>0.948</td><td>0.470</td><td>5.487</td></tr> <tr><td>SiO2</td><td>34.840</td><td>1.818</td><td>0.207</td><td>27.798</td></tr> <tr><td>P2O5</td><td>0.147</td><td>-</td><td>-</td><td>0.337</td></tr> <tr><td>S</td><td>0.015</td><td>0.007</td><td>-</td><td>0.015</td></tr> <tr><td>K2O</td><td>5.540</td><td>0.240</td><td>-</td><td>0.287</td></tr> <tr><td>CaO</td><td>5.498</td><td>0.120</td><td>-</td><td>4.044</td></tr> <tr><td>TiO2</td><td>0.156</td><td>0.338</td><td>0.433</td><td>0.001</td></tr> <tr><td>Cr2O3</td><td>0.054</td><td>0.007</td><td>0.033</td><td>0.017</td></tr> <tr><td>MnO</td><td>0.245</td><td>0.198</td><td>0.105</td><td>0.279</td></tr> <tr><td>FeO</td><td>46.290</td><td>96.357</td><td>95.130</td><td>59.376</td></tr> <tr><td>ZrO2</td><td>0.062</td><td>-</td><td>0.039</td><td>0.165</td></tr> <tr><td>BaO</td><td>0.046</td><td>0.064</td><td>0.033</td><td>0.096</td></tr> <tr><td>V2O3</td><td>0.175</td><td>0.141</td><td>0.161</td><td>-</td></tr> <tr><td>CuO</td><td>0.034</td><td>0.063</td><td>-</td><td>-</td></tr> <tr><td colspan="5">-----</td></tr> <tr><td>Total</td><td>102.931</td><td>100.651</td><td>96.944</td><td>99.317</td></tr> </tbody> </table>	Element	28	29	30	31	F	-	-	-	-	Na2O	0.923	0.019	-	0.602	MgO	0.528	0.333	0.333	0.817	Al2O3	8.382	0.948	0.470	5.487	SiO2	34.840	1.818	0.207	27.798	P2O5	0.147	-	-	0.337	S	0.015	0.007	-	0.015	K2O	5.540	0.240	-	0.287	CaO	5.498	0.120	-	4.044	TiO2	0.156	0.338	0.433	0.001	Cr2O3	0.054	0.007	0.033	0.017	MnO	0.245	0.198	0.105	0.279	FeO	46.290	96.357	95.130	59.376	ZrO2	0.062	-	0.039	0.165	BaO	0.046	0.064	0.033	0.096	V2O3	0.175	0.141	0.161	-	CuO	0.034	0.063	-	-	-----					Total	102.931	100.651	96.944	99.317	<p>TOT-30</p>
Element	28	29	30	31																																																																																																			
F	-	-	-	-																																																																																																			
Na2O	0.923	0.019	-	0.602																																																																																																			
MgO	0.528	0.333	0.333	0.817																																																																																																			
Al2O3	8.382	0.948	0.470	5.487																																																																																																			
SiO2	34.840	1.818	0.207	27.798																																																																																																			
P2O5	0.147	-	-	0.337																																																																																																			
S	0.015	0.007	-	0.015																																																																																																			
K2O	5.540	0.240	-	0.287																																																																																																			
CaO	5.498	0.120	-	4.044																																																																																																			
TiO2	0.156	0.338	0.433	0.001																																																																																																			
Cr2O3	0.054	0.007	0.033	0.017																																																																																																			
MnO	0.245	0.198	0.105	0.279																																																																																																			
FeO	46.290	96.357	95.130	59.376																																																																																																			
ZrO2	0.062	-	0.039	0.165																																																																																																			
BaO	0.046	0.064	0.033	0.096																																																																																																			
V2O3	0.175	0.141	0.161	-																																																																																																			
CuO	0.034	0.063	-	-																																																																																																			

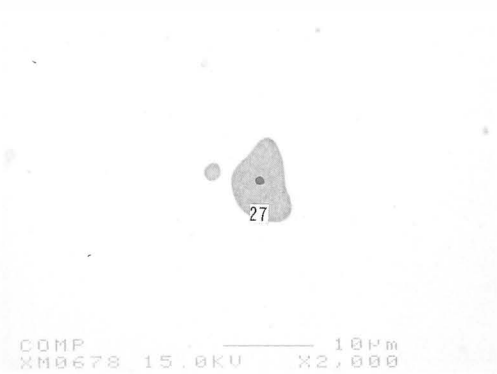
Total	102.931	100.651	96.944	99.317																																																																																																			
<p>COMP X800</p>		<table border="1"> <thead> <tr> <th>Element</th> <th>32</th> <th>33</th> <th>34</th> </tr> </thead> <tbody> <tr><td>F</td><td>-</td><td>0.028</td><td>-</td></tr> <tr><td>Na2O</td><td>-</td><td>0.005</td><td>0.038</td></tr> <tr><td>MgO</td><td>0.480</td><td>1.289</td><td>1.672</td></tr> <tr><td>Al2O3</td><td>3.449</td><td>14.165</td><td>2.120</td></tr> <tr><td>SiO2</td><td>0.511</td><td>0.900</td><td>0.174</td></tr> <tr><td>P2O5</td><td>0.020</td><td>0.012</td><td>-</td></tr> <tr><td>S</td><td>0.002</td><td>0.001</td><td>-</td></tr> <tr><td>K2O</td><td>-</td><td>-</td><td>-</td></tr> <tr><td>CaO</td><td>-</td><td>-</td><td>-</td></tr> <tr><td>TiO2</td><td>3.934</td><td>15.148</td><td>3.842</td></tr> <tr><td>Cr2O3</td><td>0.101</td><td>0.296</td><td>0.248</td></tr> <tr><td>MnO</td><td>0.350</td><td>0.364</td><td>0.450</td></tr> <tr><td>FeO</td><td>90.822</td><td>64.146</td><td>91.615</td></tr> <tr><td>ZrO2</td><td>0.089</td><td>0.020</td><td>0.059</td></tr> <tr><td>BaO</td><td>0.004</td><td>0.113</td><td>0.052</td></tr> <tr><td>V2O3</td><td>0.967</td><td>2.859</td><td>1.526</td></tr> <tr><td>CuO</td><td>-</td><td>0.202</td><td>-</td></tr> <tr><td colspan="4">-----</td></tr> <tr><td>Total</td><td>100.729</td><td>99.536</td><td>100.796</td></tr> </tbody> </table>	Element	32	33	34	F	-	0.028	-	Na2O	-	0.005	0.038	MgO	0.480	1.289	1.672	Al2O3	3.449	14.165	2.120	SiO2	0.511	0.900	0.174	P2O5	0.020	0.012	-	S	0.002	0.001	-	K2O	-	-	-	CaO	-	-	-	TiO2	3.934	15.148	3.842	Cr2O3	0.101	0.296	0.248	MnO	0.350	0.364	0.450	FeO	90.822	64.146	91.615	ZrO2	0.089	0.020	0.059	BaO	0.004	0.113	0.052	V2O3	0.967	2.859	1.526	CuO	-	0.202	-	-----				Total	100.729	99.536	100.796	<p>TOT-31</p>																				
Element	32	33	34																																																																																																				
F	-	0.028	-																																																																																																				
Na2O	-	0.005	0.038																																																																																																				
MgO	0.480	1.289	1.672																																																																																																				
Al2O3	3.449	14.165	2.120																																																																																																				
SiO2	0.511	0.900	0.174																																																																																																				
P2O5	0.020	0.012	-																																																																																																				
S	0.002	0.001	-																																																																																																				
K2O	-	-	-																																																																																																				
CaO	-	-	-																																																																																																				
TiO2	3.934	15.148	3.842																																																																																																				
Cr2O3	0.101	0.296	0.248																																																																																																				
MnO	0.350	0.364	0.450																																																																																																				
FeO	90.822	64.146	91.615																																																																																																				
ZrO2	0.089	0.020	0.059																																																																																																				
BaO	0.004	0.113	0.052																																																																																																				
V2O3	0.967	2.859	1.526																																																																																																				
CuO	-	0.202	-																																																																																																				

Total	100.729	99.536	100.796																																																																																																				

Photo.33 EPMA調査結果

滓部鉍物相及び鉄中非金属介在物の反射電子像と定量分析値

COMP ×400			Mn																																																																																																				
Si			S																																																																																																				
COMP ×1000		<table border="1" data-bbox="810 927 1182 1285"> <thead> <tr> <th>Element</th> <th>23</th> <th>24</th> <th>25</th> <th>26</th> </tr> </thead> <tbody> <tr><td>F</td><td>-</td><td>-</td><td>-</td><td>-</td></tr> <tr><td>Na2O</td><td>0.015</td><td>0.005</td><td>-</td><td>0.023</td></tr> <tr><td>MgO</td><td>0.122</td><td>0.064</td><td>0.102</td><td>0.823</td></tr> <tr><td>Al2O3</td><td>6.826</td><td>2.076</td><td>6.296</td><td>55.169</td></tr> <tr><td>SiO2</td><td>24.582</td><td>8.390</td><td>22.234</td><td>1.297</td></tr> <tr><td>P2O5</td><td>-</td><td>-</td><td>-</td><td>-</td></tr> <tr><td>S</td><td>0.234</td><td>0.062</td><td>0.441</td><td>0.009</td></tr> <tr><td>K2O</td><td>-</td><td>-</td><td>-</td><td>-</td></tr> <tr><td>CaO</td><td>0.170</td><td>0.046</td><td>0.175</td><td>0.005</td></tr> <tr><td>TiO2</td><td>0.043</td><td>-</td><td>0.031</td><td>0.067</td></tr> <tr><td>Cr2O3</td><td>0.038</td><td>0.031</td><td>-</td><td>0.234</td></tr> <tr><td>MnO</td><td>54.256</td><td>30.001</td><td>53.357</td><td>31.846</td></tr> <tr><td>FeO</td><td>6.244</td><td>7.984</td><td>6.169</td><td>6.652</td></tr> <tr><td>ZrO2</td><td>0.091</td><td>-</td><td>0.030</td><td>-</td></tr> <tr><td>BaO</td><td>-</td><td>-</td><td>-</td><td>-</td></tr> <tr><td>V2O3</td><td>0.005</td><td>-</td><td>-</td><td>0.116</td></tr> <tr><td>CuO</td><td>0.037</td><td>0.060</td><td>0.138</td><td>-</td></tr> <tr><td colspan="5">-----</td></tr> <tr><td>Total</td><td>92.605</td><td>48.704</td><td>88.863</td><td>95.239</td></tr> </tbody> </table>	Element	23	24	25	26	F	-	-	-	-	Na2O	0.015	0.005	-	0.023	MgO	0.122	0.064	0.102	0.823	Al2O3	6.826	2.076	6.296	55.169	SiO2	24.582	8.390	22.234	1.297	P2O5	-	-	-	-	S	0.234	0.062	0.441	0.009	K2O	-	-	-	-	CaO	0.170	0.046	0.175	0.005	TiO2	0.043	-	0.031	0.067	Cr2O3	0.038	0.031	-	0.234	MnO	54.256	30.001	53.357	31.846	FeO	6.244	7.984	6.169	6.652	ZrO2	0.091	-	0.030	-	BaO	-	-	-	-	V2O3	0.005	-	-	0.116	CuO	0.037	0.060	0.138	-	-----					Total	92.605	48.704	88.863	95.239	
Element	23	24	25	26																																																																																																			
F	-	-	-	-																																																																																																			
Na2O	0.015	0.005	-	0.023																																																																																																			
MgO	0.122	0.064	0.102	0.823																																																																																																			
Al2O3	6.826	2.076	6.296	55.169																																																																																																			
SiO2	24.582	8.390	22.234	1.297																																																																																																			
P2O5	-	-	-	-																																																																																																			
S	0.234	0.062	0.441	0.009																																																																																																			
K2O	-	-	-	-																																																																																																			
CaO	0.170	0.046	0.175	0.005																																																																																																			
TiO2	0.043	-	0.031	0.067																																																																																																			
Cr2O3	0.038	0.031	-	0.234																																																																																																			
MnO	54.256	30.001	53.357	31.846																																																																																																			
FeO	6.244	7.984	6.169	6.652																																																																																																			
ZrO2	0.091	-	0.030	-																																																																																																			
BaO	-	-	-	-																																																																																																			
V2O3	0.005	-	-	0.116																																																																																																			
CuO	0.037	0.060	0.138	-																																																																																																			

Total	92.605	48.704	88.863	95.239																																																																																																			
COMP ×2000		<table border="1" data-bbox="810 1321 938 1671"> <thead> <tr> <th>Element</th> <th>27</th> </tr> </thead> <tbody> <tr><td>F</td><td>0.207</td></tr> <tr><td>Na2O</td><td>0.021</td></tr> <tr><td>MgO</td><td>0.338</td></tr> <tr><td>Al2O3</td><td>4.634</td></tr> <tr><td>SiO2</td><td>26.581</td></tr> <tr><td>P2O5</td><td>-</td></tr> <tr><td>S</td><td>0.119</td></tr> <tr><td>K2O</td><td>0.012</td></tr> <tr><td>CaO</td><td>1.786</td></tr> <tr><td>TiO2</td><td>0.015</td></tr> <tr><td>Cr2O3</td><td>-</td></tr> <tr><td>MnO</td><td>54.240</td></tr> <tr><td>FeO</td><td>5.744</td></tr> <tr><td>ZrO2</td><td>0.020</td></tr> <tr><td>BaO</td><td>-</td></tr> <tr><td>V2O3</td><td>-</td></tr> <tr><td>CuO</td><td>-</td></tr> <tr><td colspan="2">-----</td></tr> <tr><td>Total</td><td>93.600</td></tr> </tbody> </table>	Element	27	F	0.207	Na2O	0.021	MgO	0.338	Al2O3	4.634	SiO2	26.581	P2O5	-	S	0.119	K2O	0.012	CaO	1.786	TiO2	0.015	Cr2O3	-	MnO	54.240	FeO	5.744	ZrO2	0.020	BaO	-	V2O3	-	CuO	-	-----		Total	93.600																																																													
Element	27																																																																																																						
F	0.207																																																																																																						
Na2O	0.021																																																																																																						
MgO	0.338																																																																																																						
Al2O3	4.634																																																																																																						
SiO2	26.581																																																																																																						
P2O5	-																																																																																																						
S	0.119																																																																																																						
K2O	0.012																																																																																																						
CaO	1.786																																																																																																						
TiO2	0.015																																																																																																						
Cr2O3	-																																																																																																						
MnO	54.240																																																																																																						
FeO	5.744																																																																																																						
ZrO2	0.020																																																																																																						
BaO	-																																																																																																						
V2O3	-																																																																																																						
CuO	-																																																																																																						

Total	93.600																																																																																																						

Photo.34 鉄器(鋳?) (TOT-29)の鉄中非金属介在物のEPMA調査結果
 反射電子像 (COMP) と特性X線像及び定量分析値

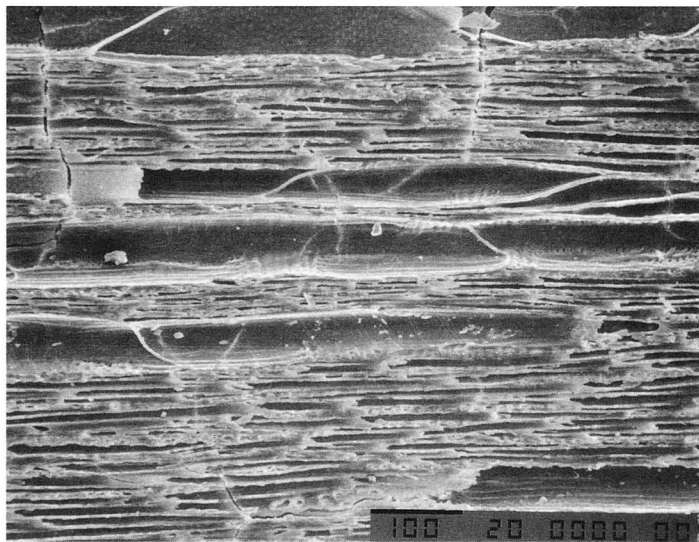
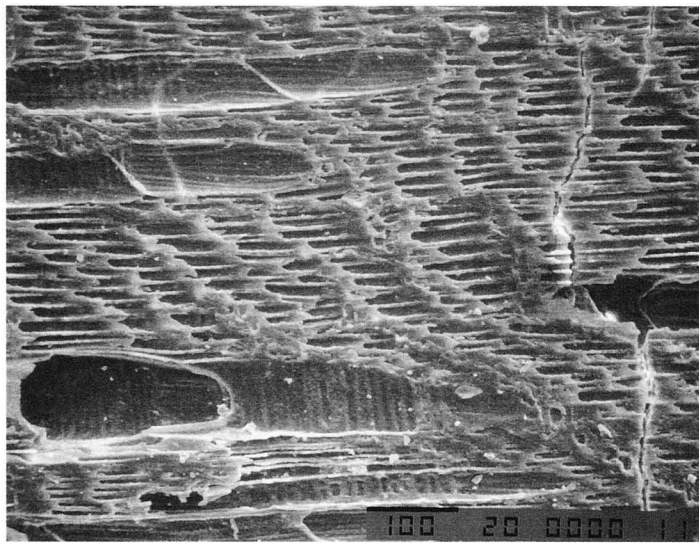
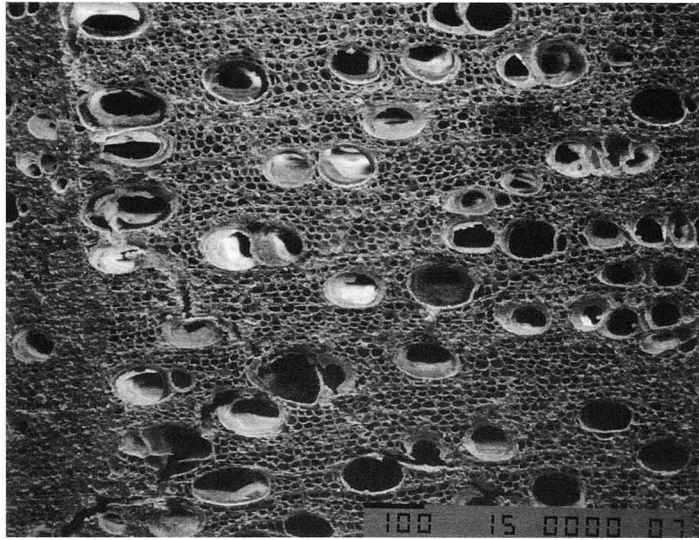


Photo.35 木炭組織 (TOT-33-1)
上から木口 (×100) 柁目 (×150) 板目 (×150)

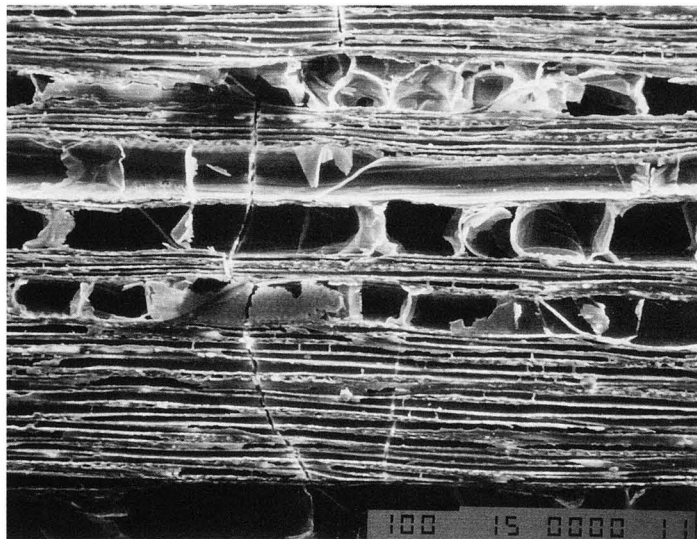
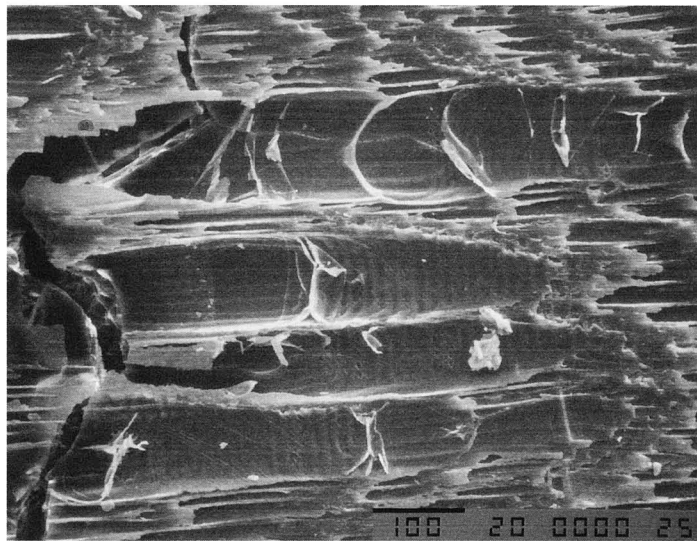
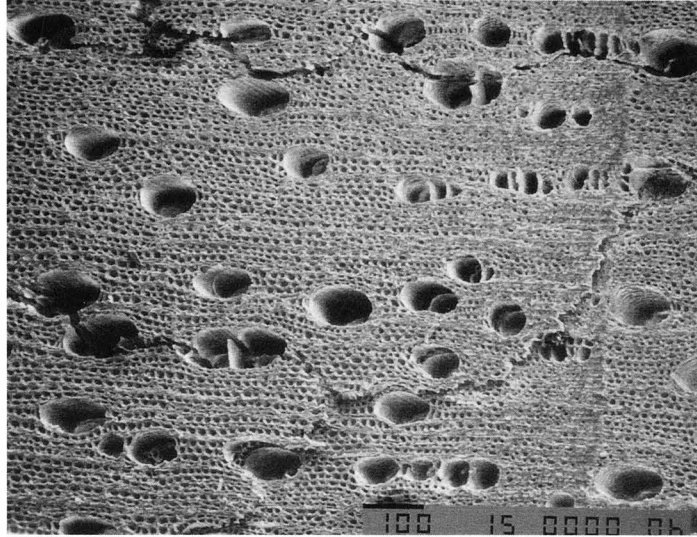


Photo.36 木炭組織(TOT-33-2)
上から木口(×100) 柁目(×150) 板目(×150)

図 版



調査前全景



製鉄炉確認状況

図版2



製鉄炉土層堆積状況(東から)



製鉄炉土層堆積状況(南から)



製鉄炉全景



SX-01 土层断面

図版4



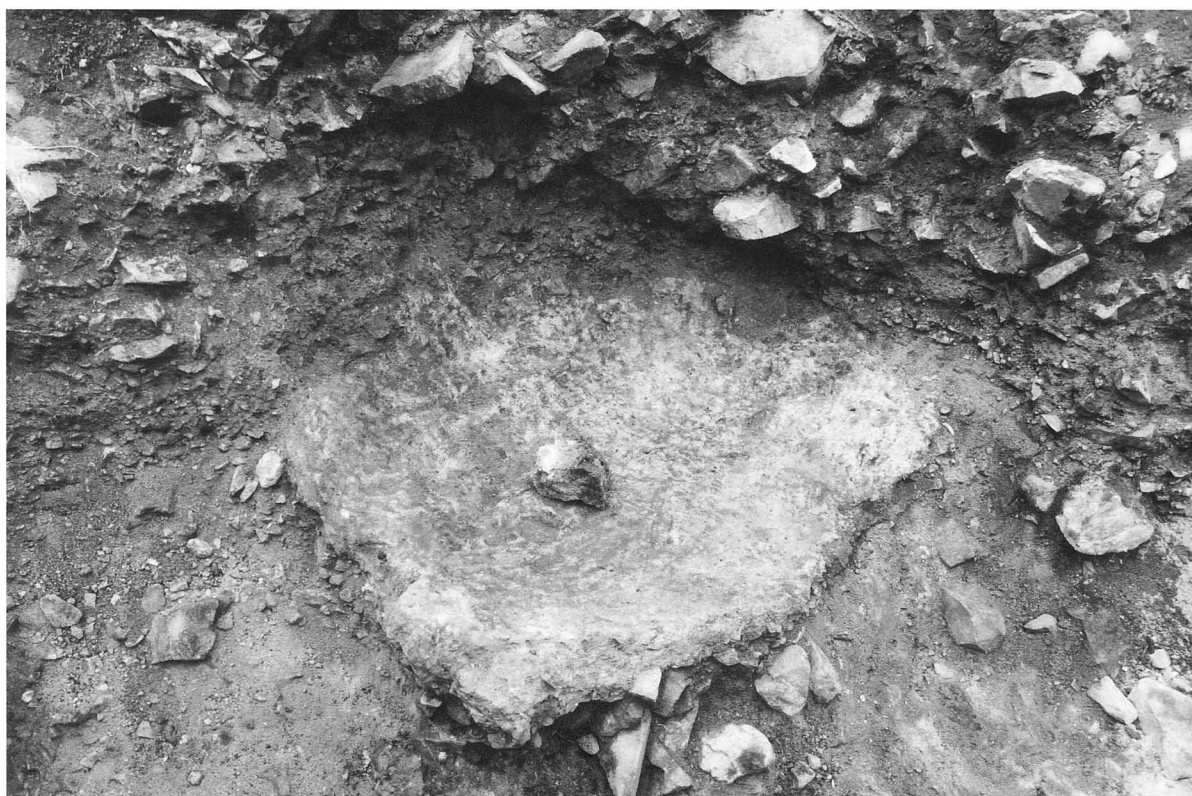
SX-01 完掘状況



SX-01と製鉄炉



SX-05 覆土半截状况



SX-05 完掘状况

図版6



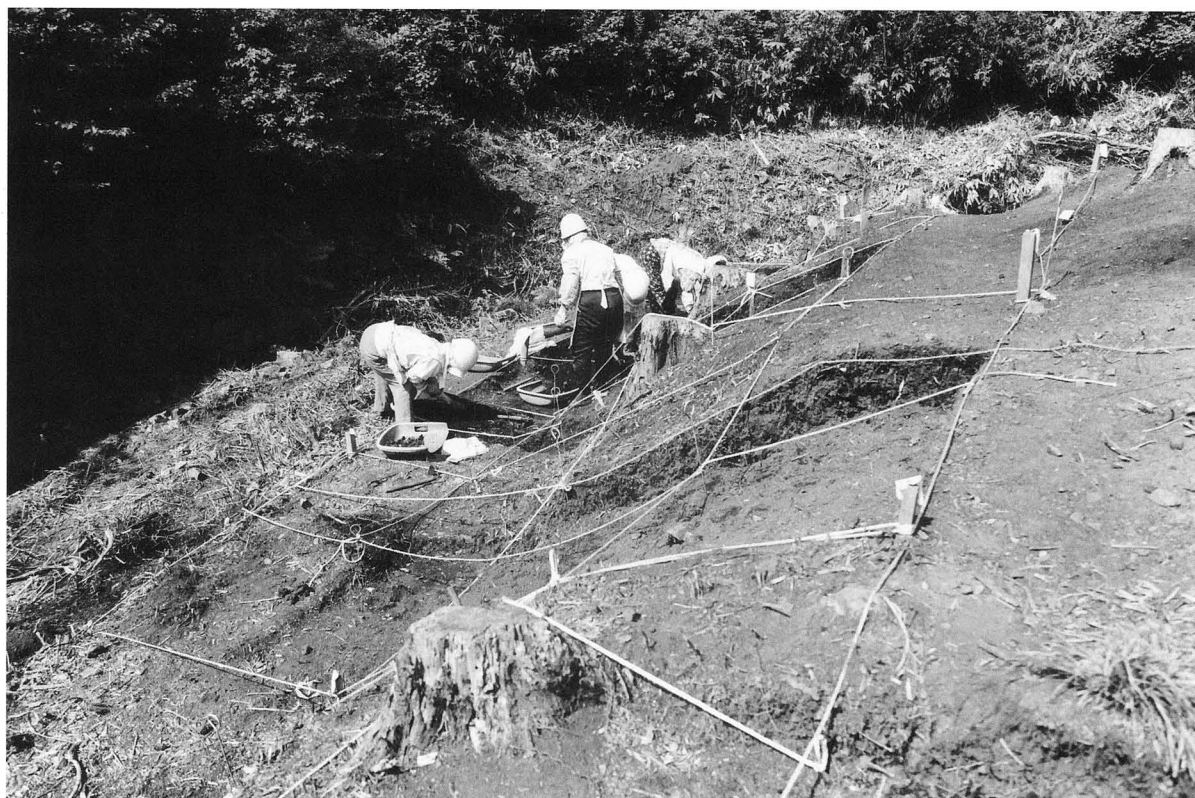
SX-05 半截狀況



SX-07 完掘狀況



SX-03 土層断面



排滓場掘り下げ作業状況

図版8



排滓場掘り下げ状況



出土遺物仮置き状況



2号炭窯完掘状況



1号炭窯とSX-09

図版10



1号炭窯完掘状況



1号炭窯煙道(1)



1号炭窯煙道(2)



調査終了時全景

報 告 書 抄 録

フリガナ	トイタニイセキ							
書名	戸井谷遺跡							
副書名								
巻次								
シリーズ名	志津見ダム建設予定地内埋蔵文化財発掘調査報告書							
シリーズ番号	19							
編著者名	神柱靖彦、野津 弘、時枝克安、(財)九州環境管理協会、九州テクノリサーチ・TACセンター							
編集機関	島根県教育庁埋蔵文化財調査センター URL: http://www.pref.shimane.jp/section/maibun/							
所在地	〒690-0131 島根県松江市打出町33番地 TEL 0852-36-8608 E-mail:maibun@pref.shimane.jp							
発行年月日	平成15年(2003年)3月31日							
フリガナ	フリガナ	コード		位置(日本測地系)		調査期間	調査面積	調査原因
所収遺跡名	所在地	市町村	遺跡番号	北緯	東経			
トイタニ 戸井谷	シマ 島 ネ 根 ケン 県 イ 飯 石 郡 ト ン 頓 原 チョウ 町	32884		35° 09' 46"	132° 40' 40"	2000.4.25 } 2000.9.19	1,600㎡	ダム建設
所収遺跡名	種別	主な時代	主な遺構	主な遺物		特記事項		
トイタニ 戸井谷	製鉄遺跡	鎌倉時代 室町時代 江戸時代	製鉄炉 炭窯 土坑	輸入銭 製鉄関連遺物				

志津見ダム建設予定地内埋蔵文化財発掘調査報告書 19

戸井谷遺跡

平成15年3月31日 発行

発行 国土交通省中国地方整備局
島根県教育委員会

印刷 千鳥印刷株式会社
松江市黒田町484-15