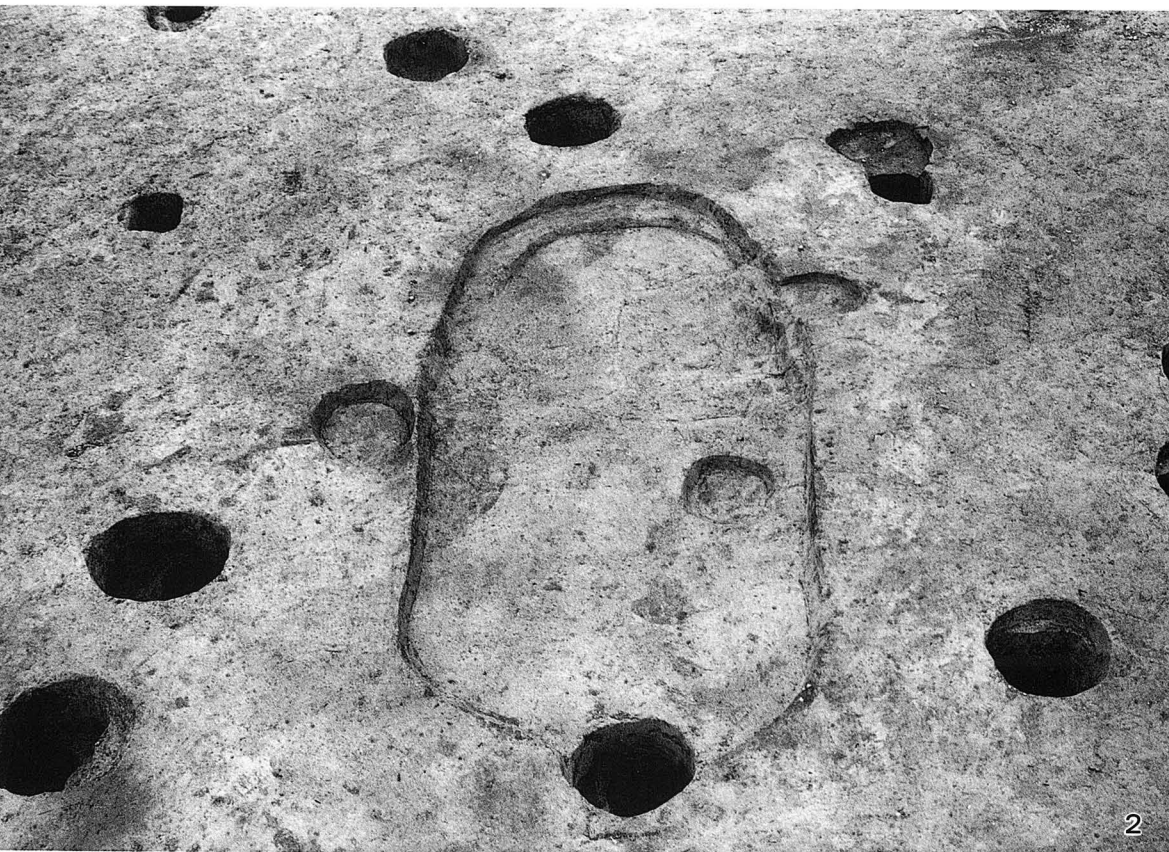
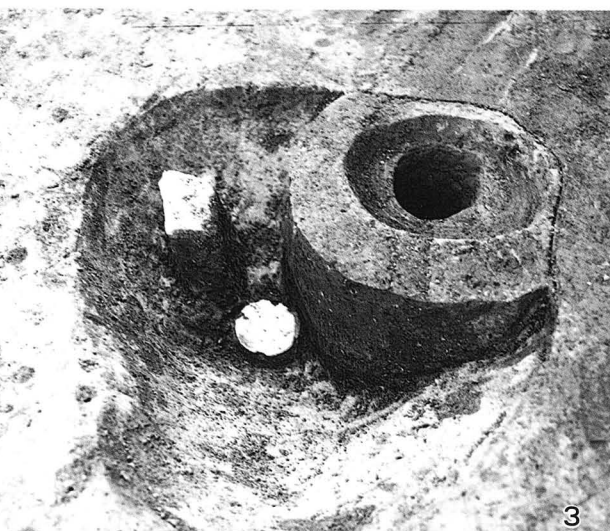




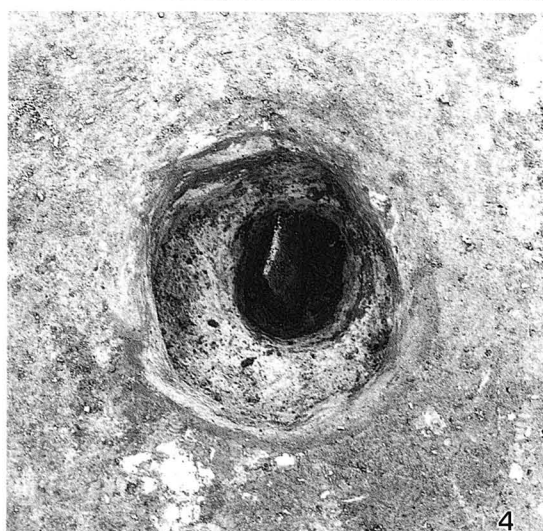
1. SK175
南から



2. SK177
南から

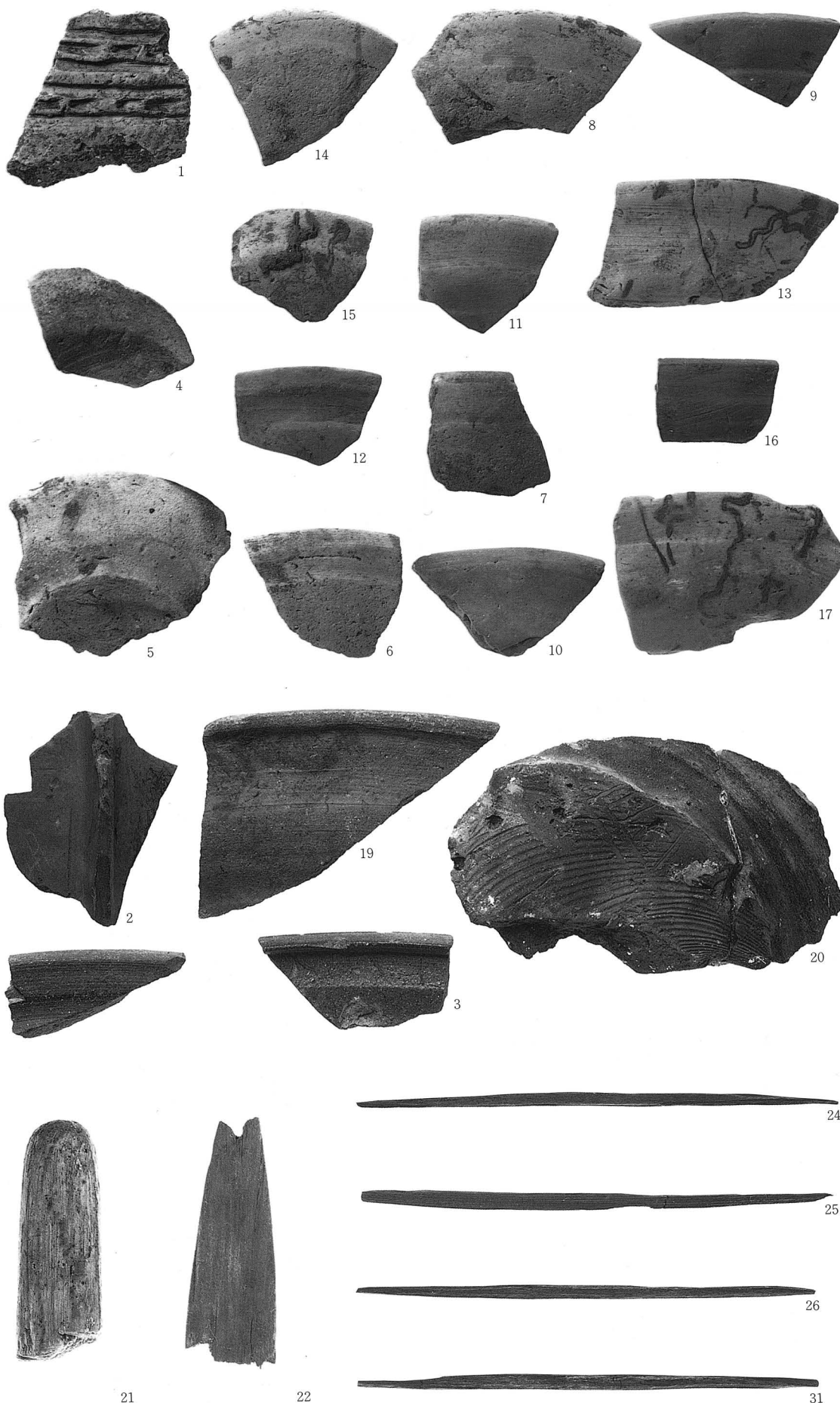


3



4

3. SK135
南から
4. SK110
南から



田尻遺跡 第二次調査 土器・陶磁器 木製品



82



84



85



90



83



89



91



82



84



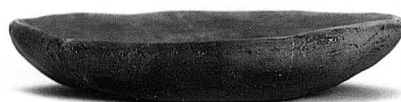
83



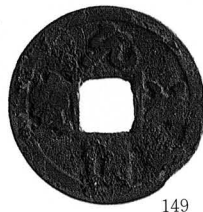
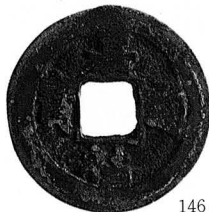
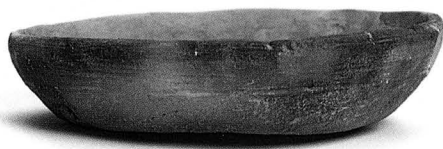
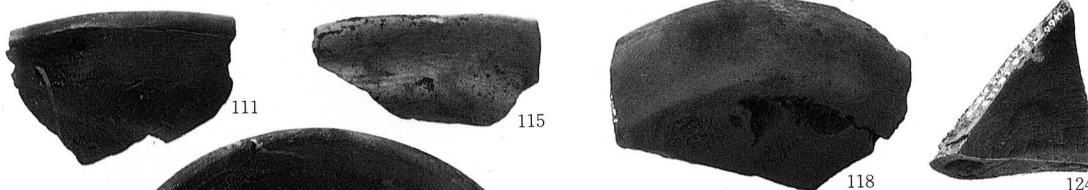
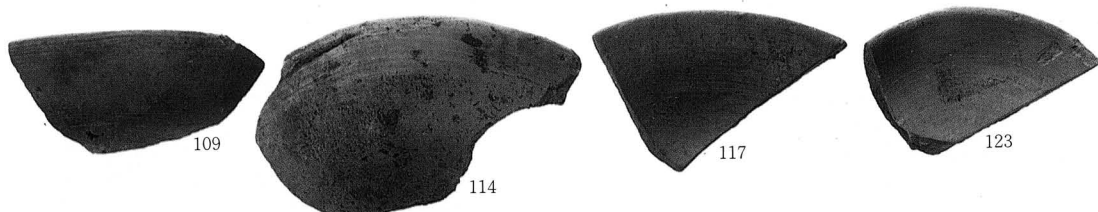
89

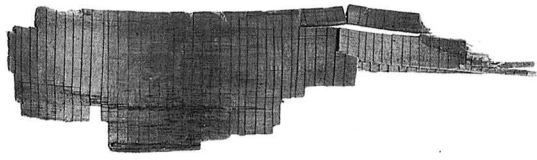


90



91





126

127



128



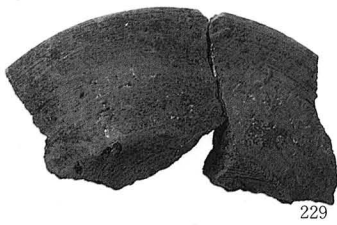
228



230



233



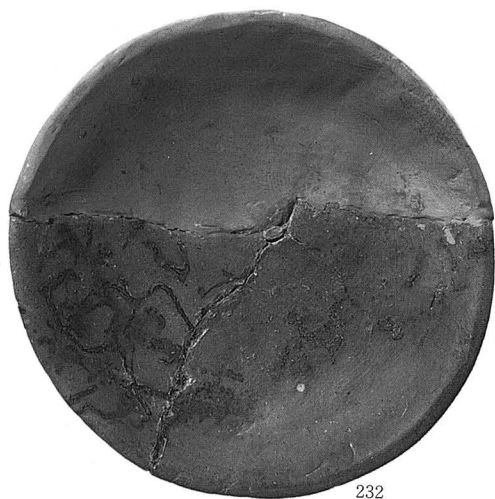
229



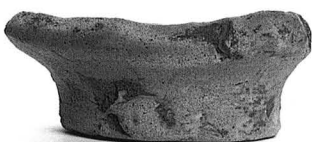
231



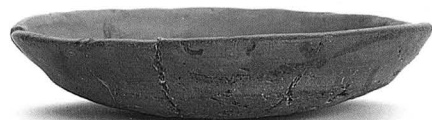
234



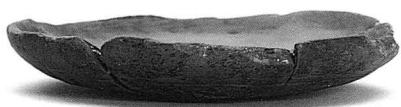
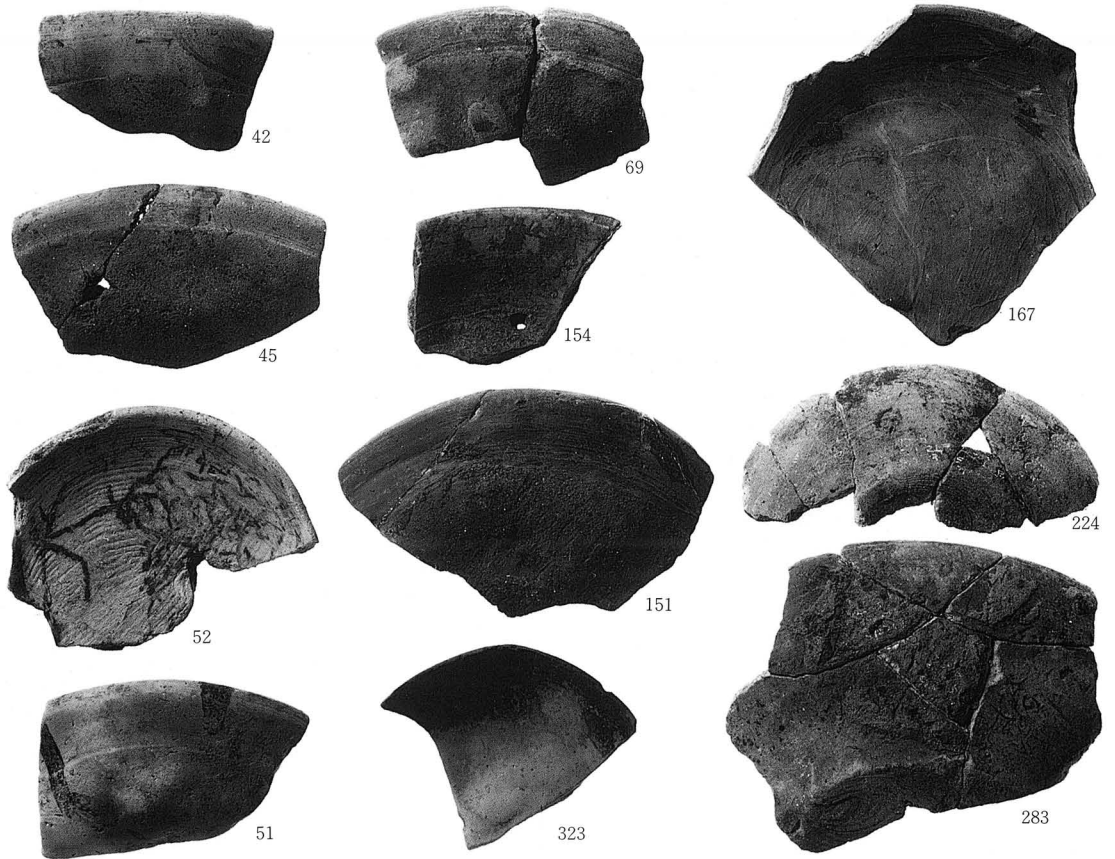
232



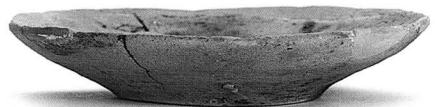
228



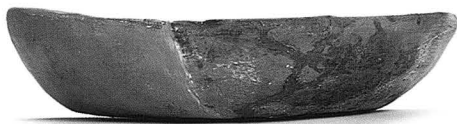
232



47



288



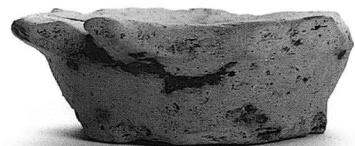
71



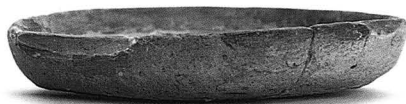
222



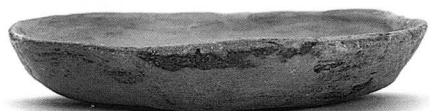
80



282



174



321



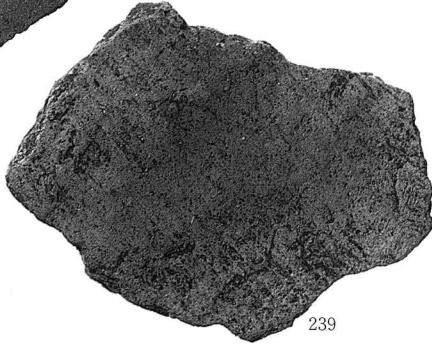
235



236



238



239



247



246



248



237



40



93



49



56



254



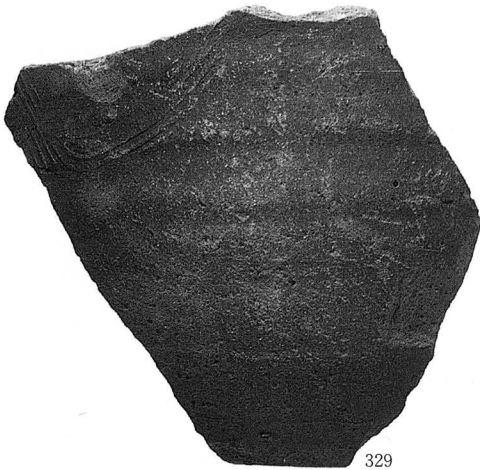
78



60



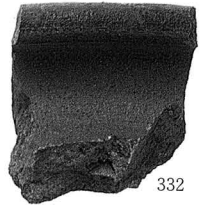
18



329



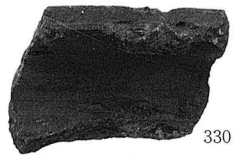
328



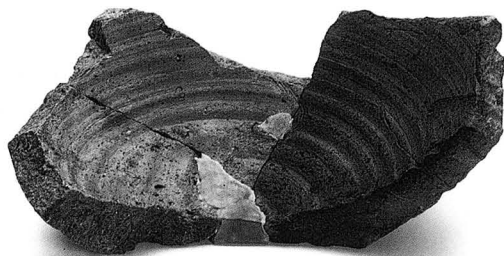
332



331



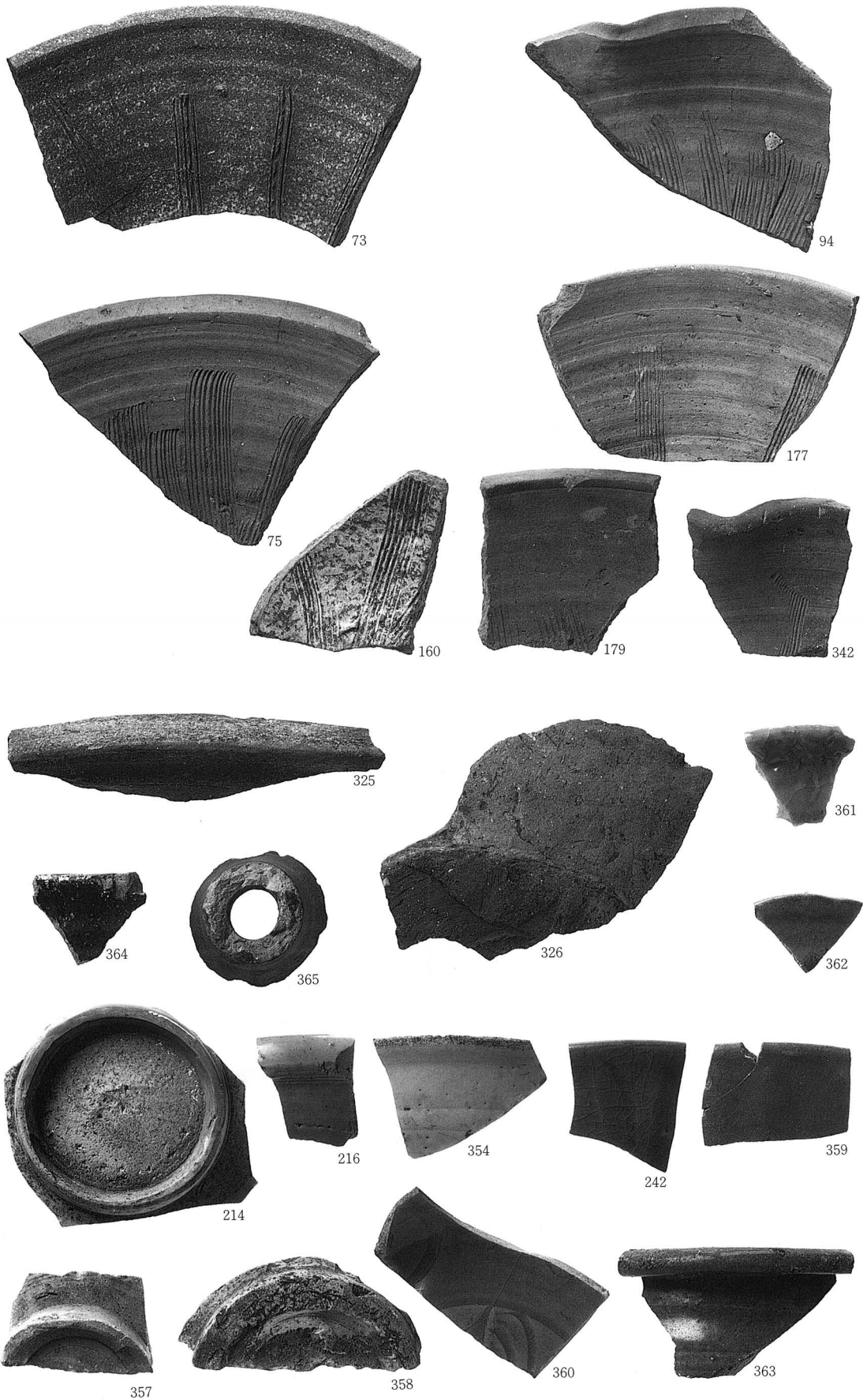
330

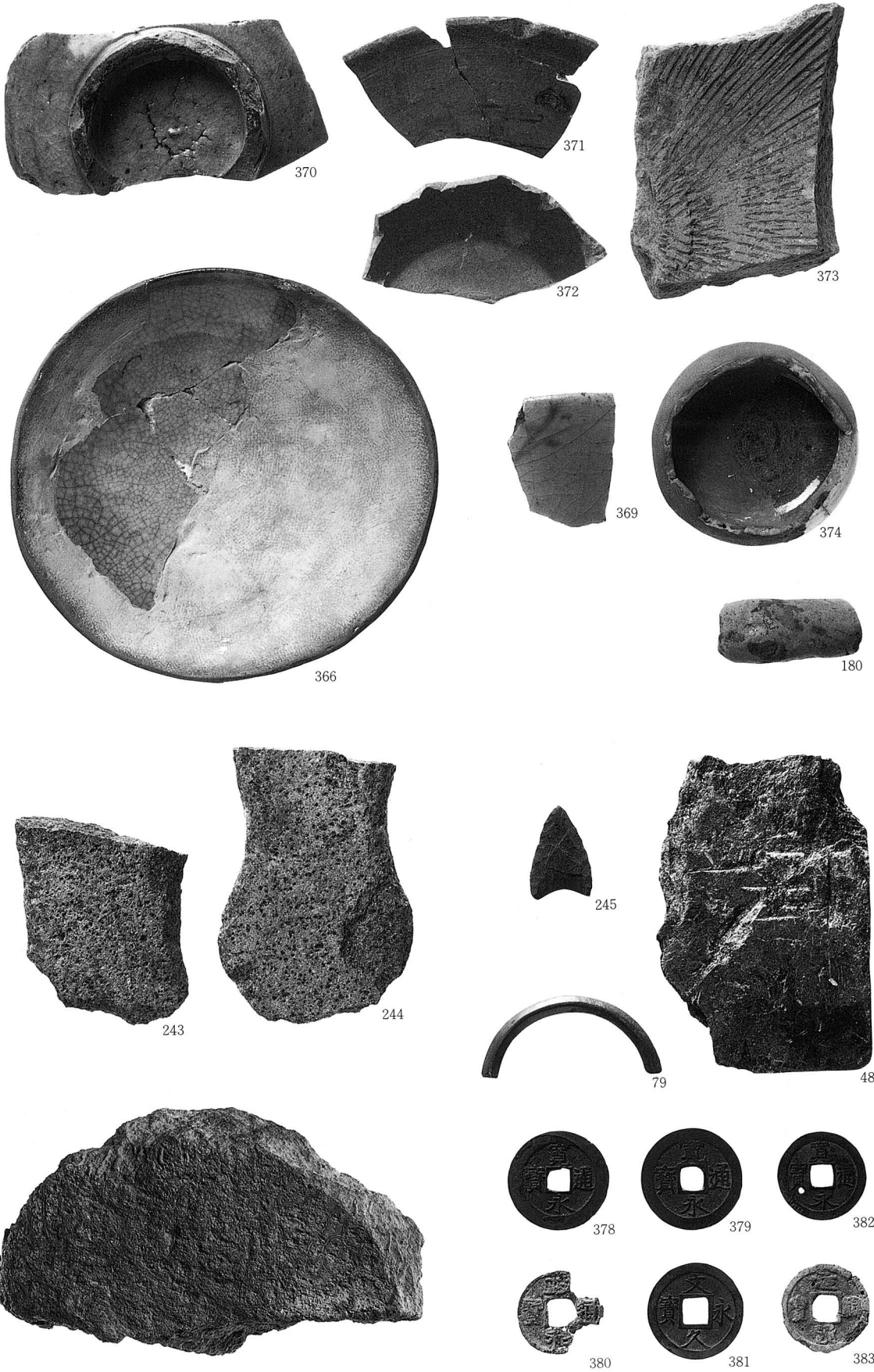


55

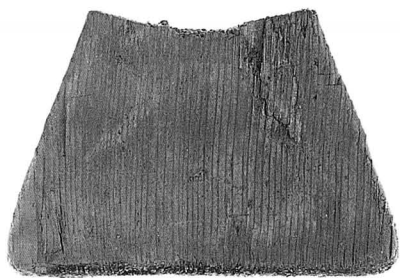


54





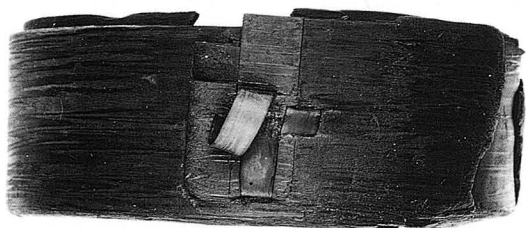
377



183



102



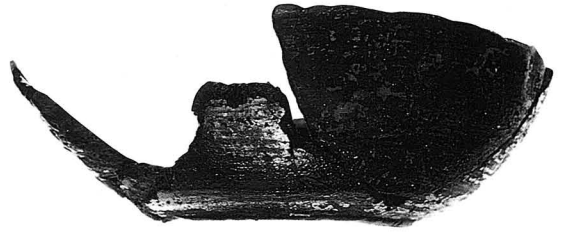
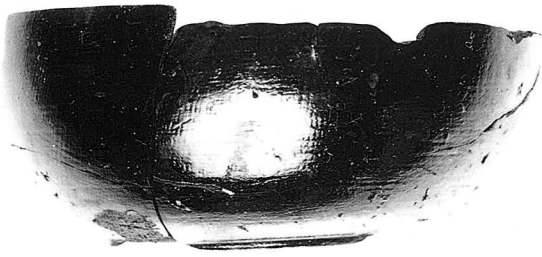
102



103

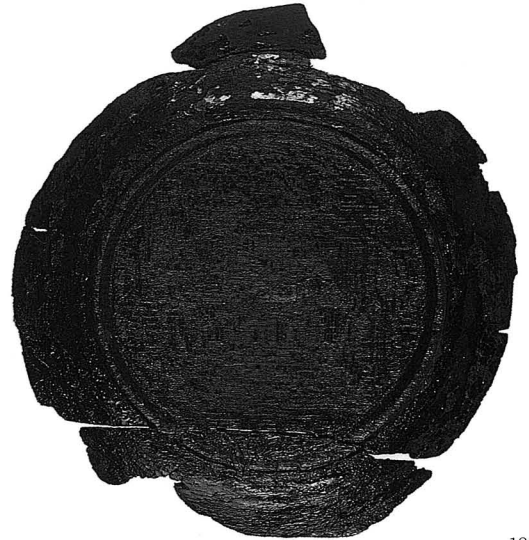


104



95

96



181



97



182



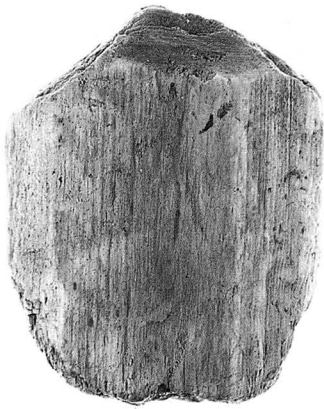
32



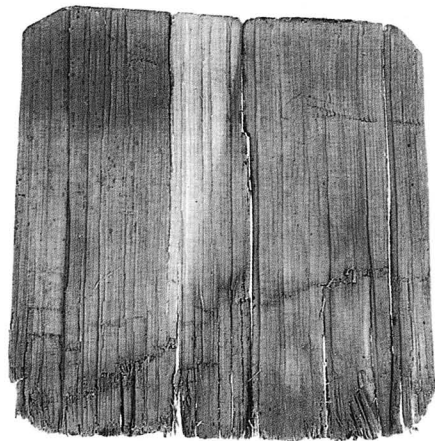
33



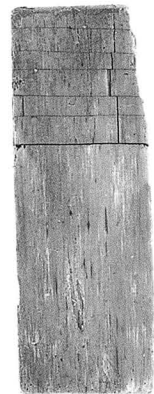
376



209



212



213



101

平成8年3月31日発行

富山県文化振興財団埋蔵文化財発掘調査報告第8集

梅原加賀坊遺跡・久戸遺跡 発掘調査報告
梅原安丸遺跡・田尻遺跡

— 東海北陸自動車道建設に伴う

埋蔵文化財発掘報告Ⅲ —

(第二分冊)

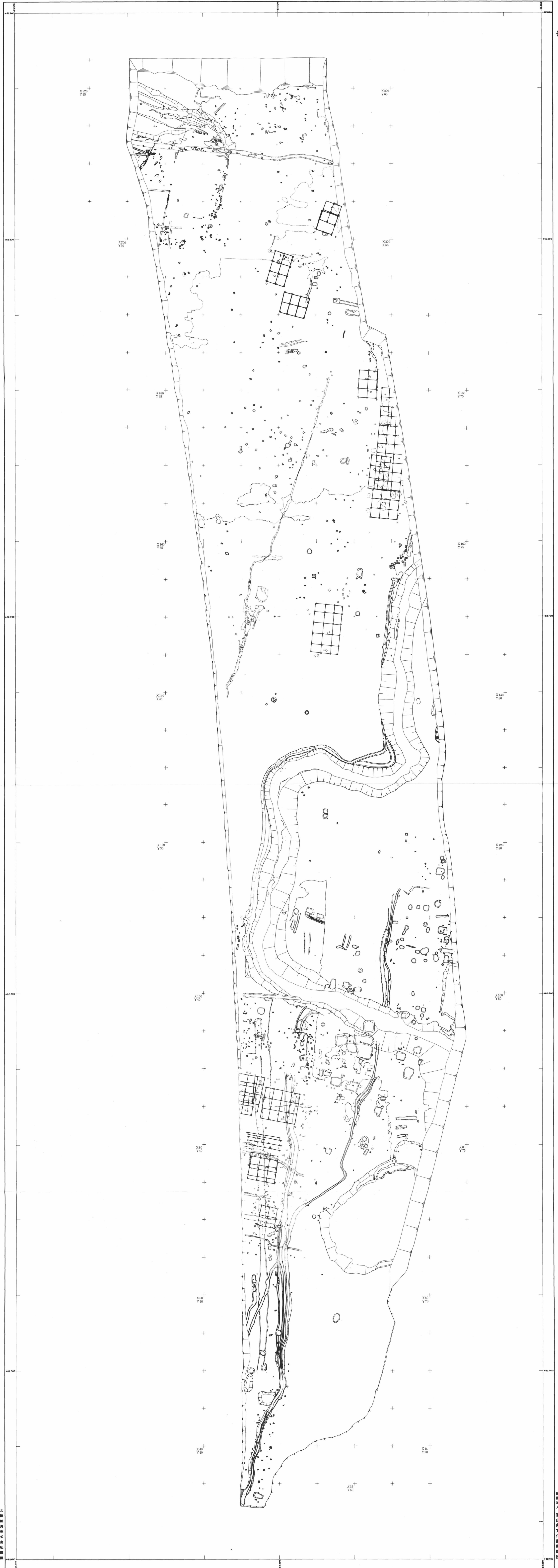
編集・発行 財団法人富山県文化振興財団
埋蔵文化財調査事務所
〒930 富山市五福4384番1号
TEL 0764-42-4229

印 刷 日 興 印 刷

梅原加賀坊遺跡・久戸遺跡
梅原安丸遺跡・田尻遺跡 発掘調査報告

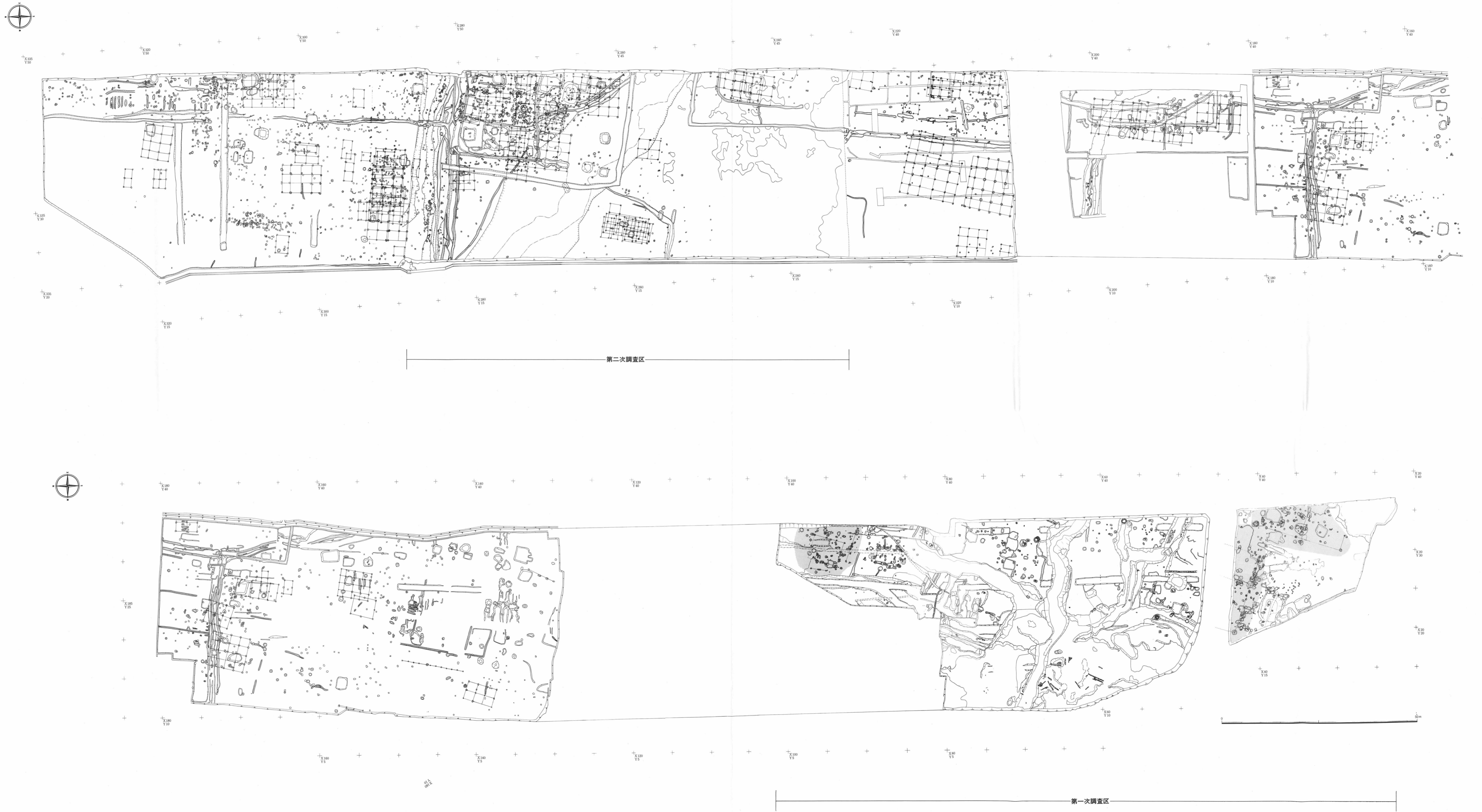
付 図

1. 梅原加賀坊遺跡遺構全体図
2. 田尻遺跡遺構全体図



付図1 梅原加賀坊遺跡遺構全体図

1:500



付図2 田尻遺跡遺構全体図