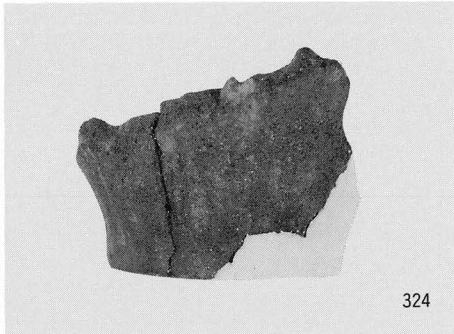
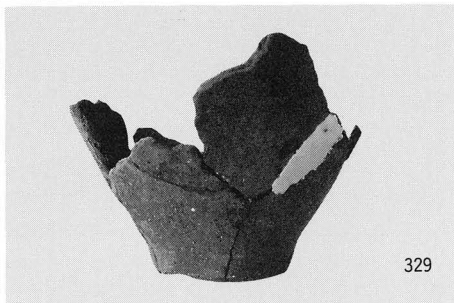


328



324



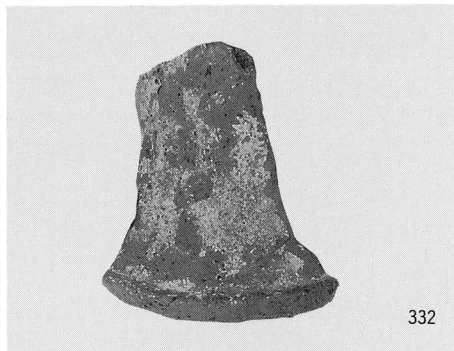
329



330



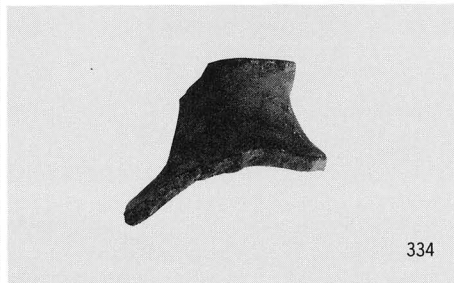
331



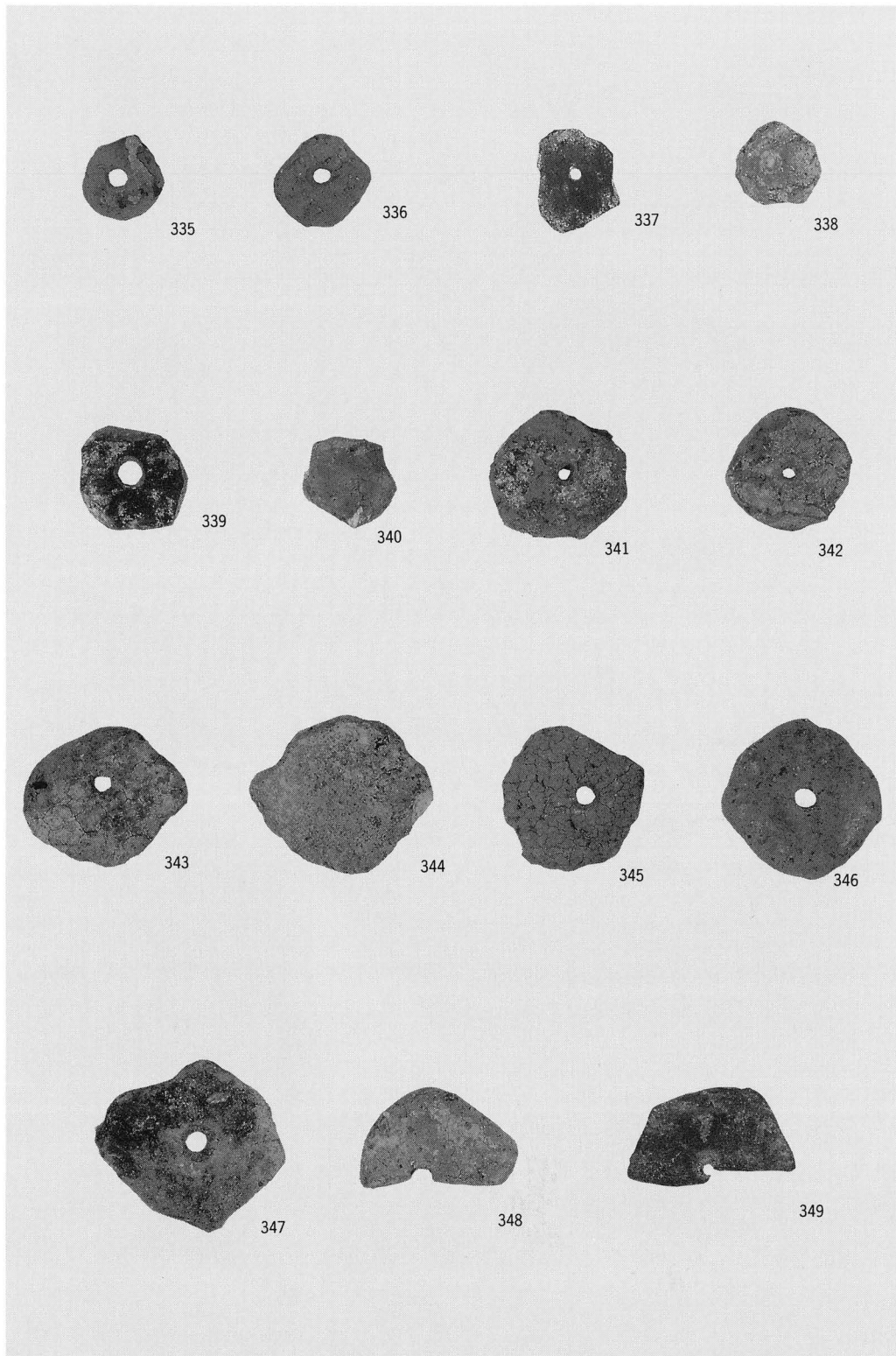
332

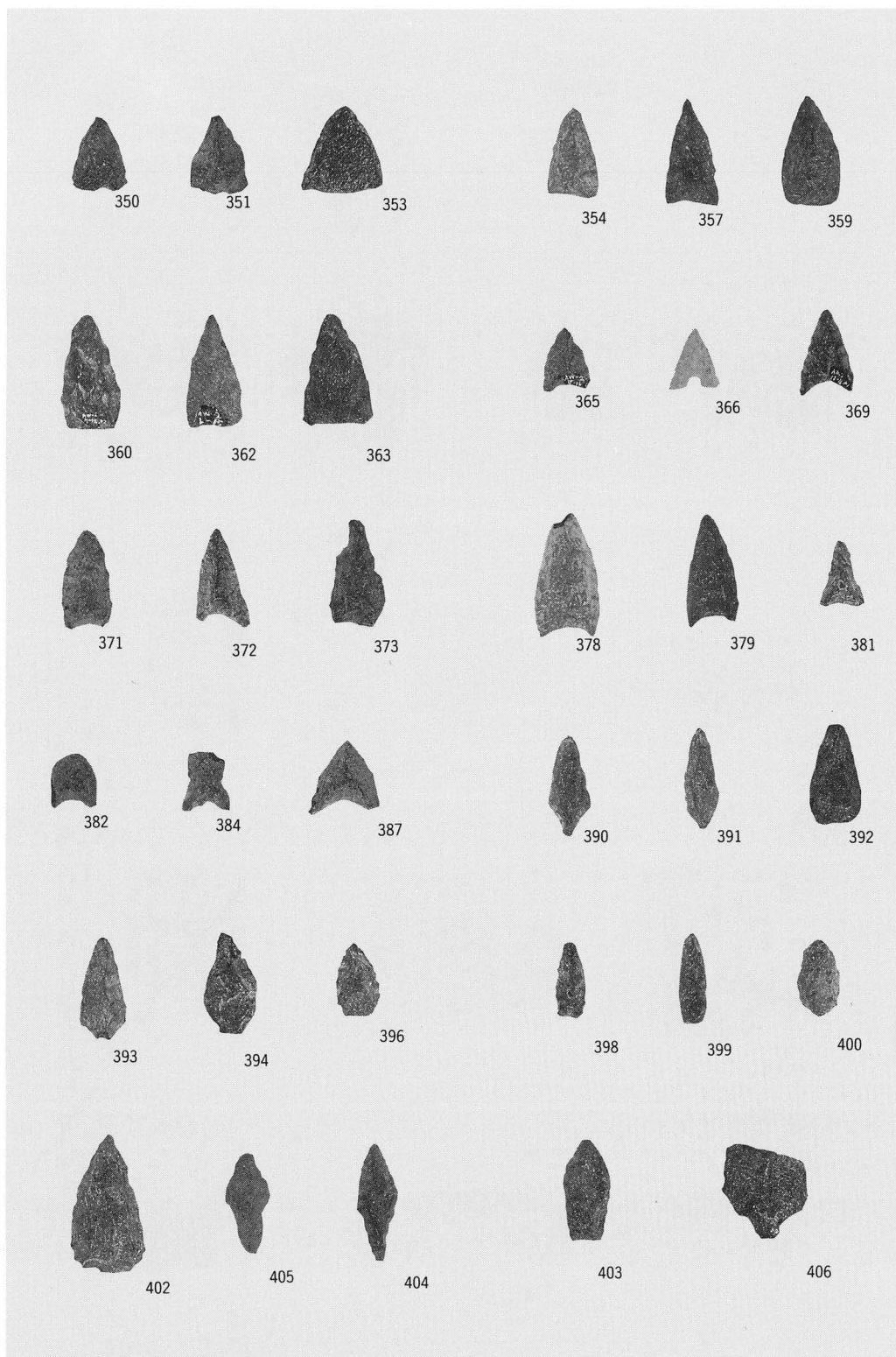


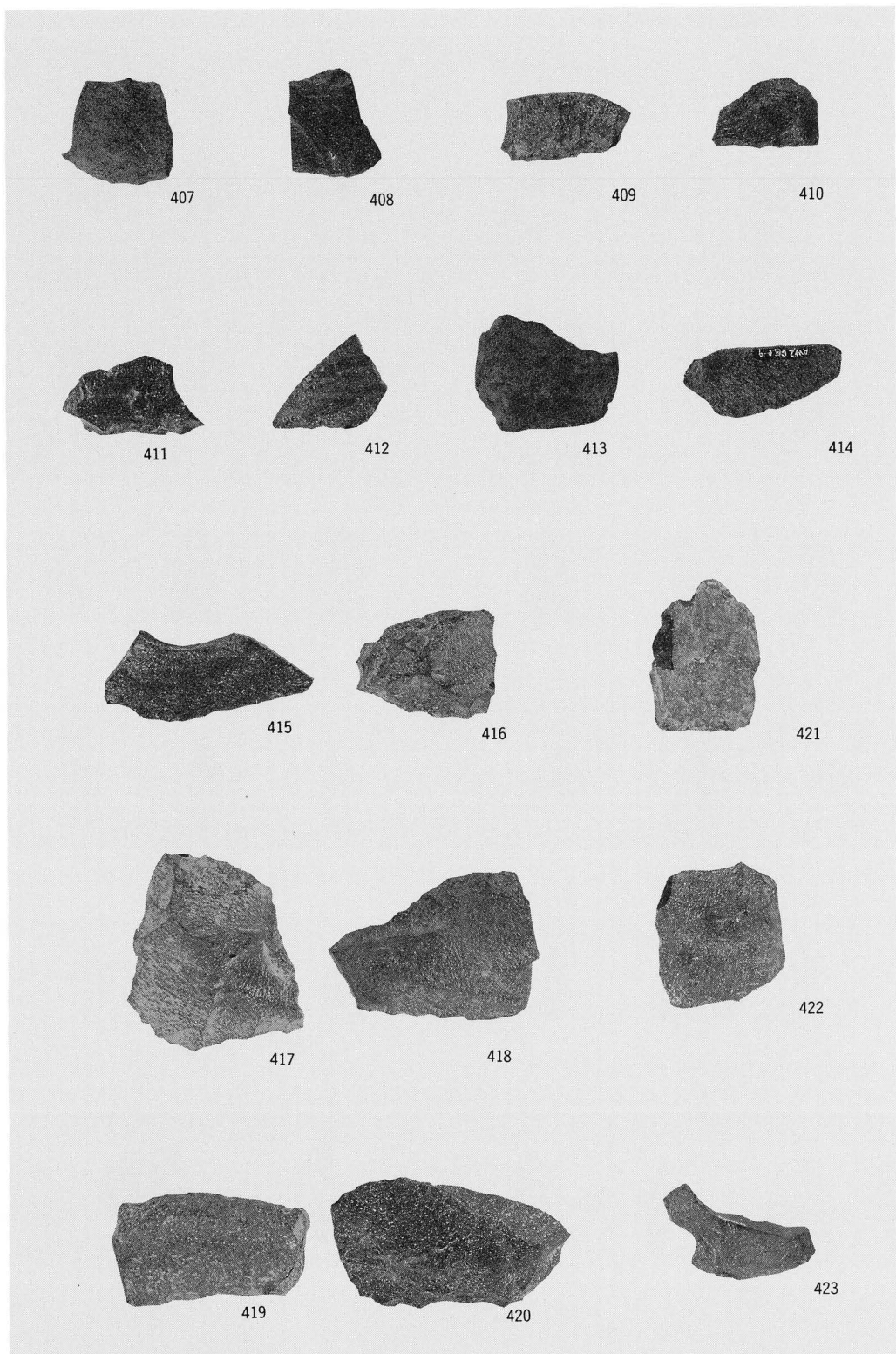
333

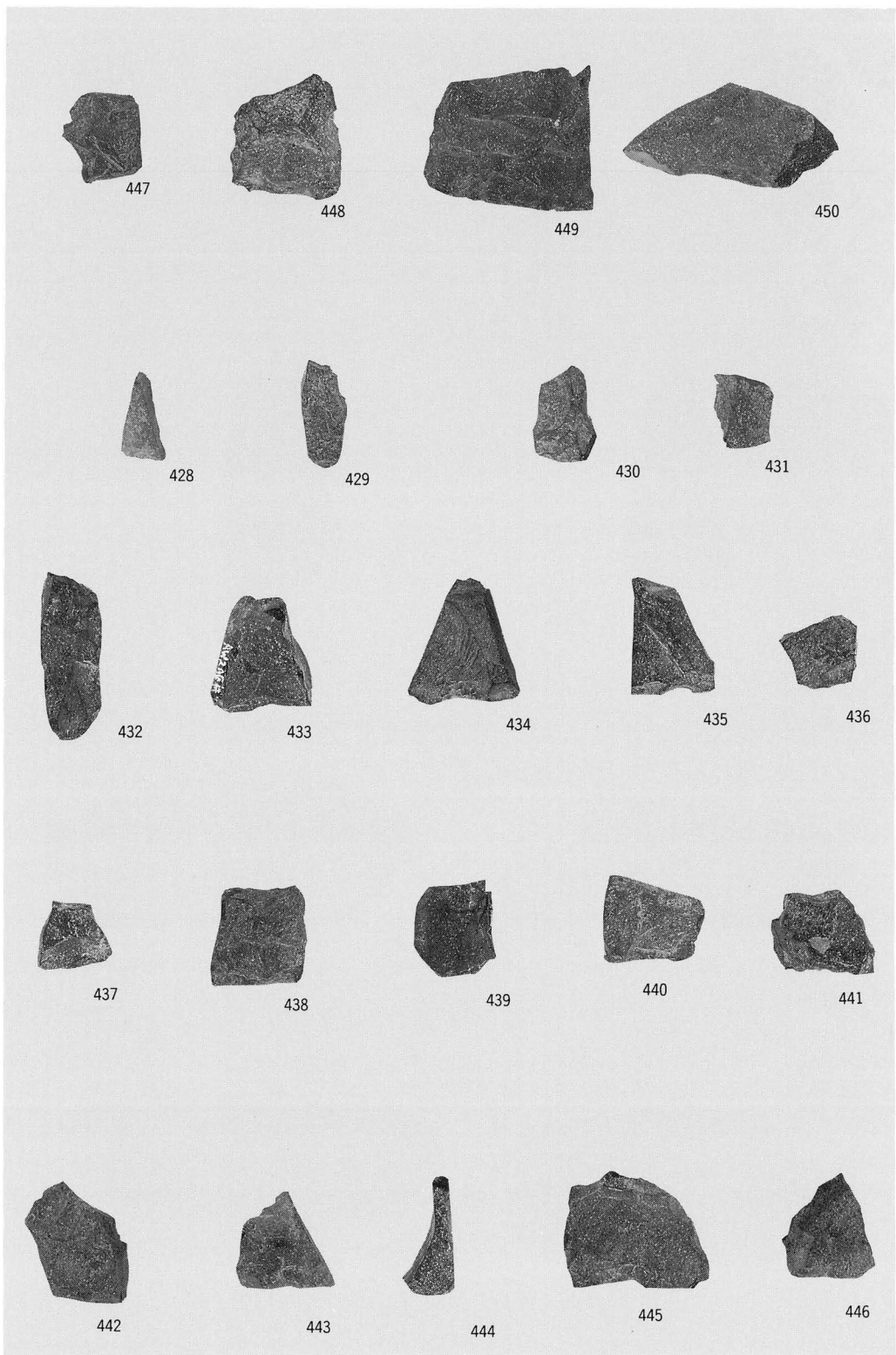


334

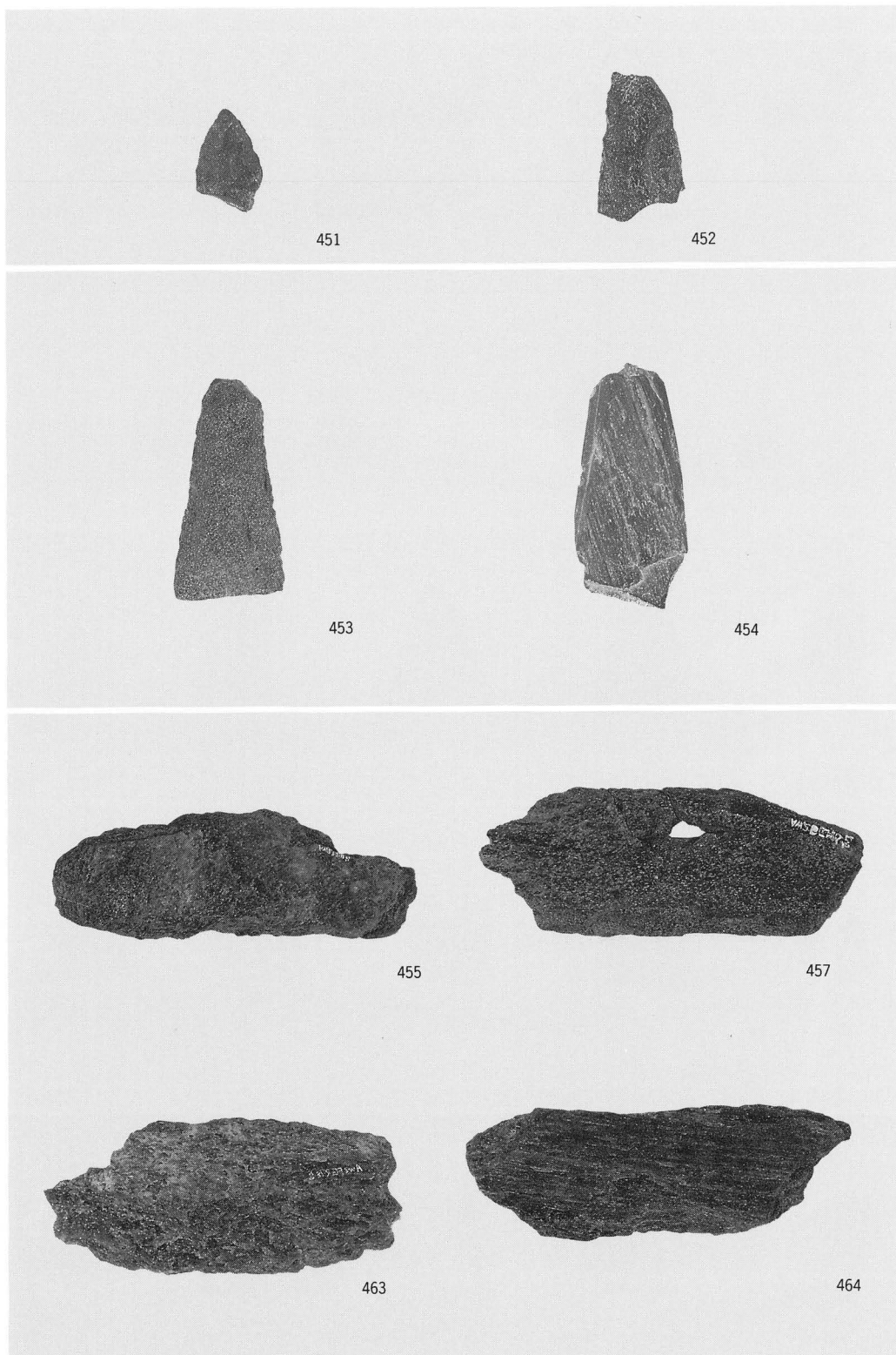




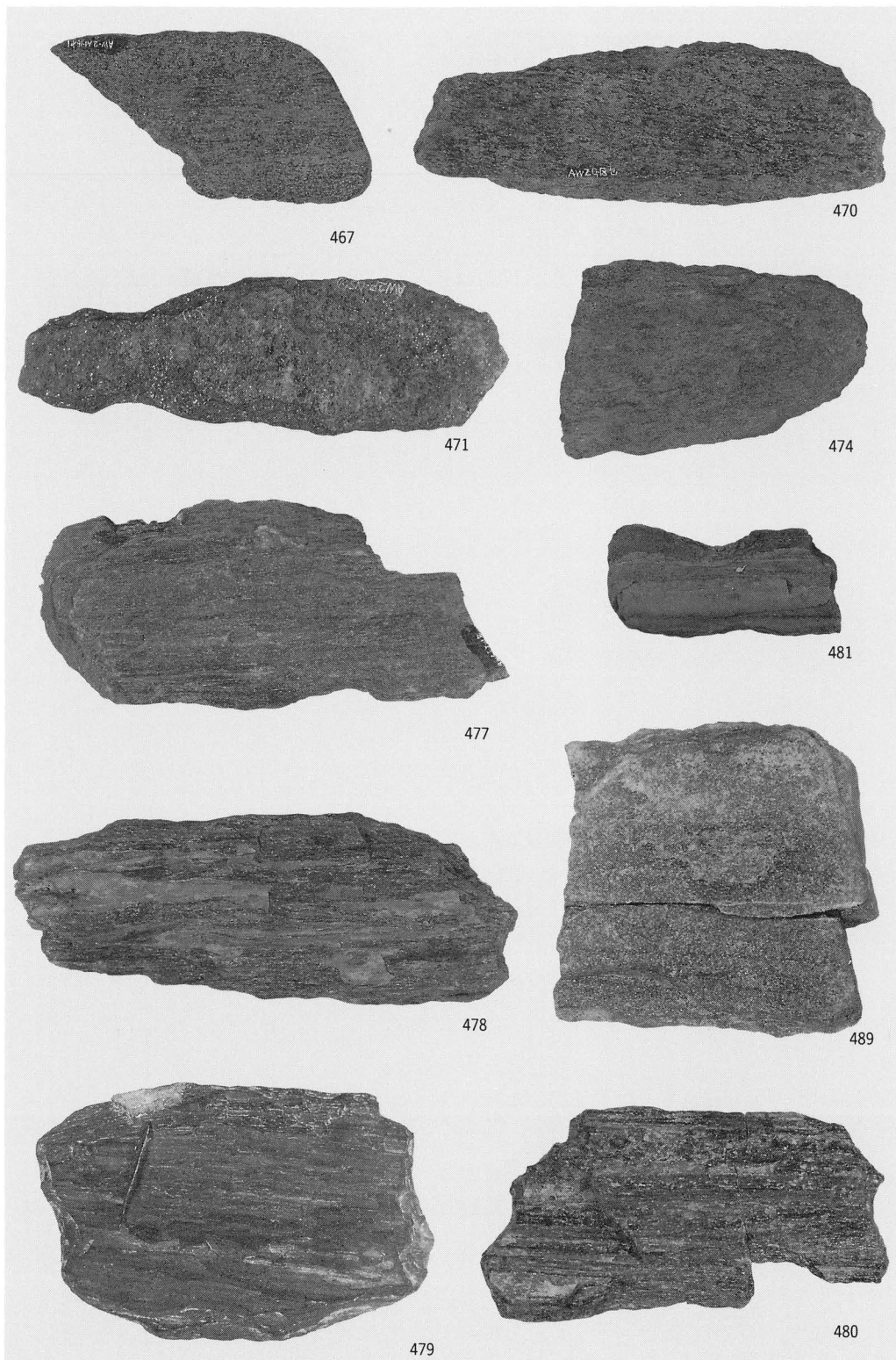




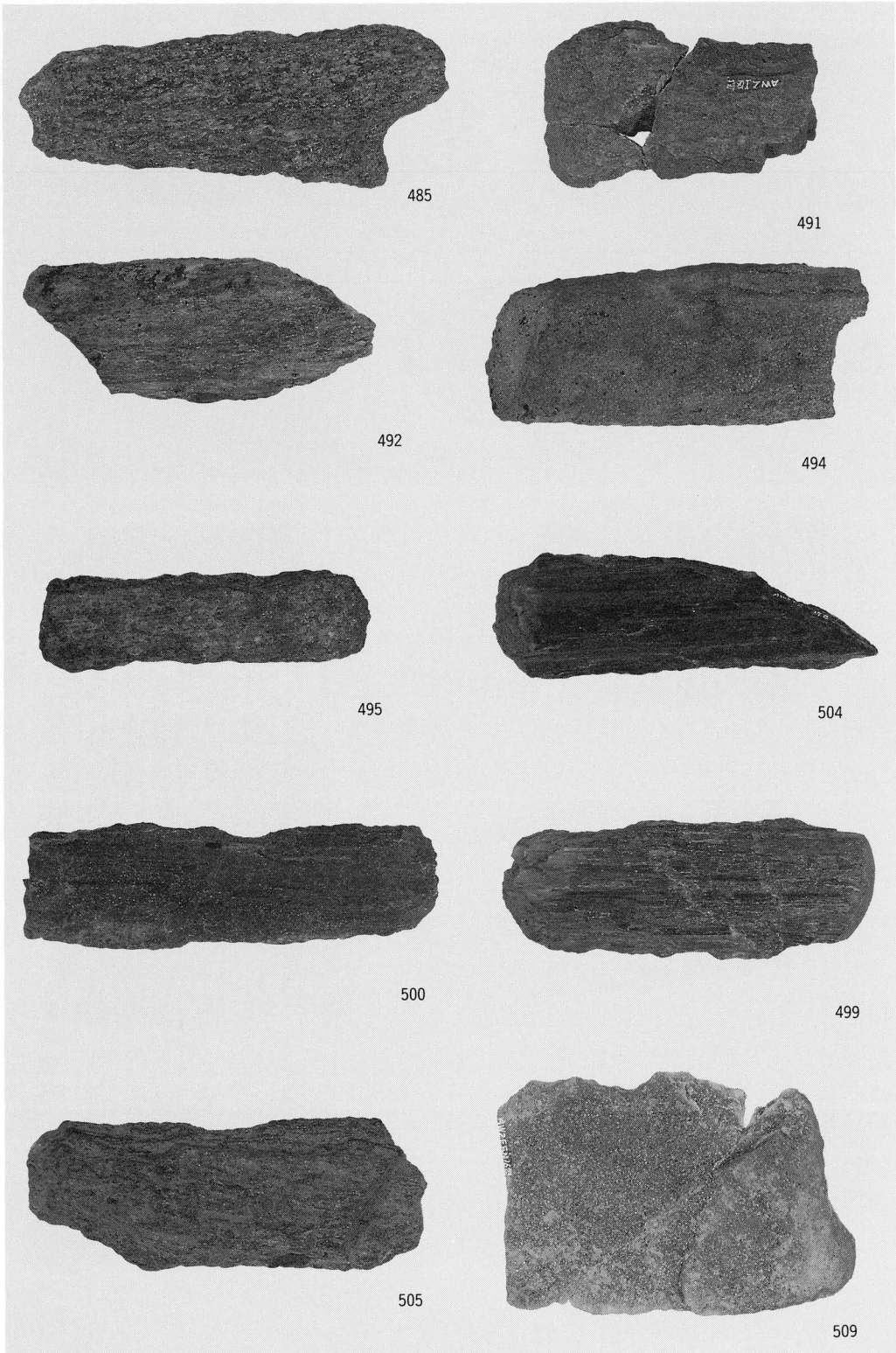
出土遺物 (44)



出土遺物 (45)

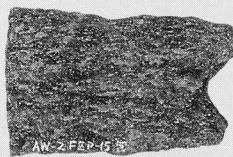


出土遺物 (46)





510



512



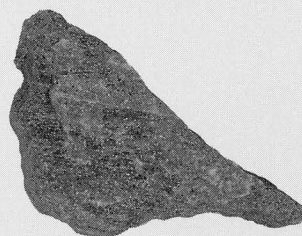
514



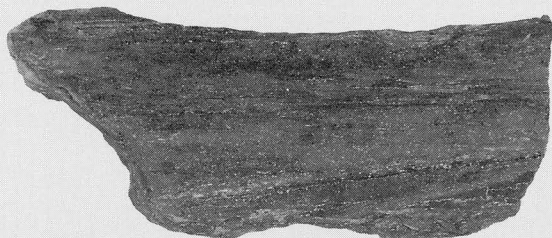
518



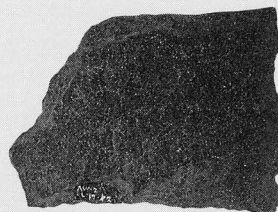
519



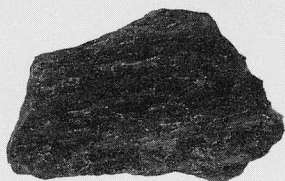
521



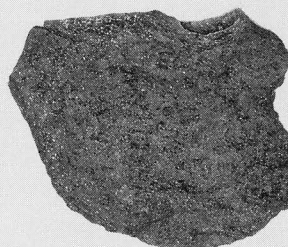
523



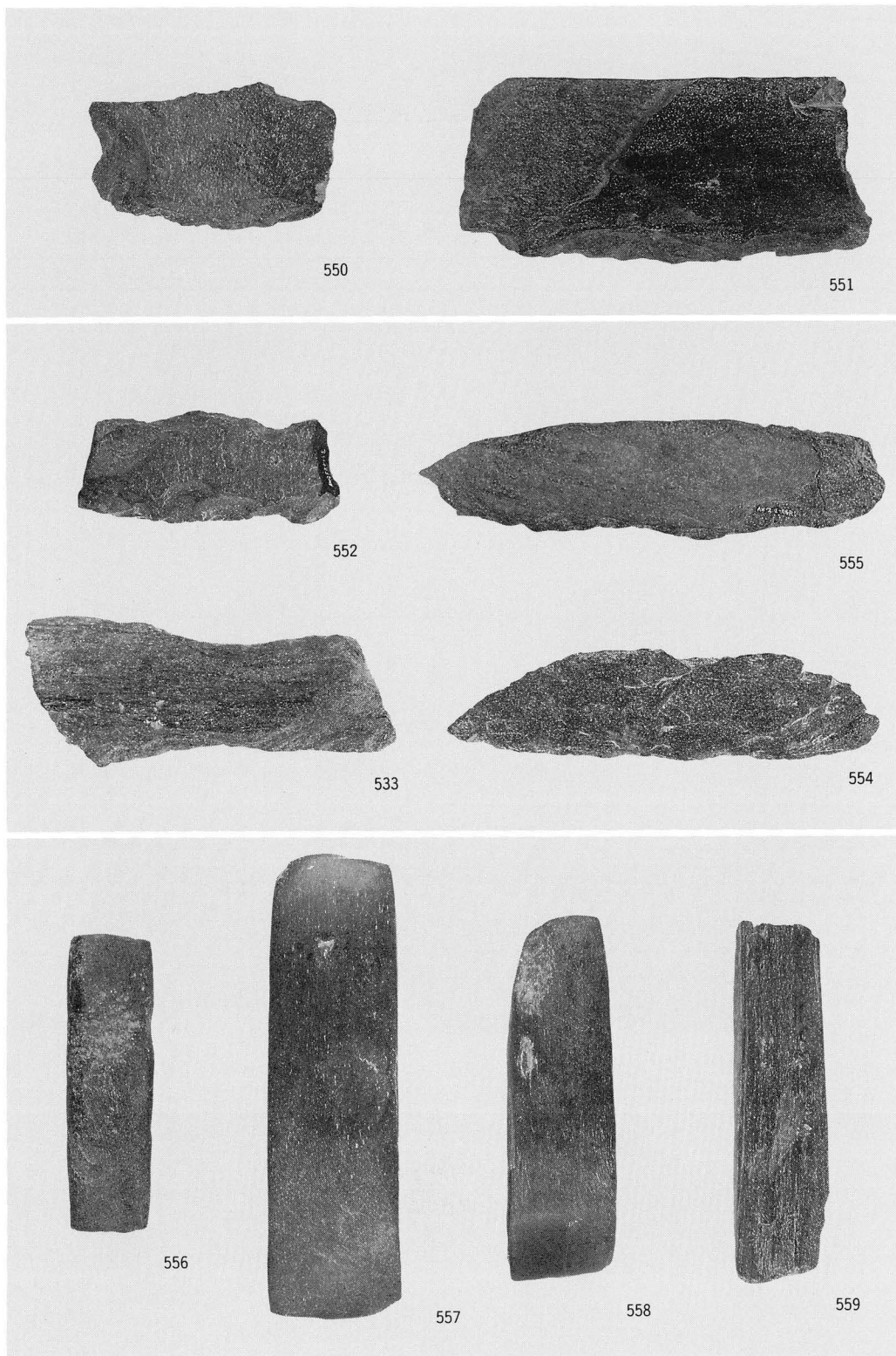
530

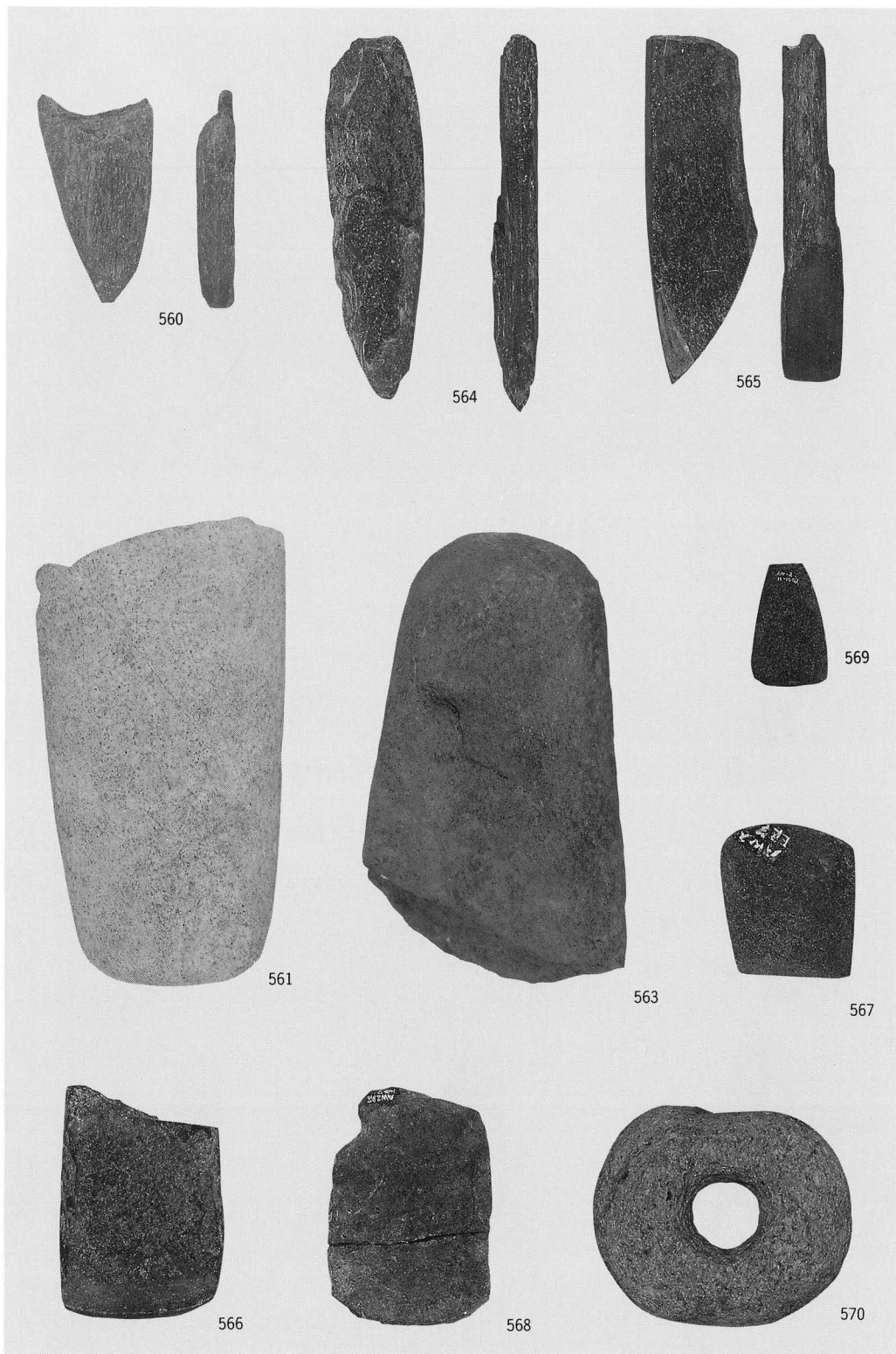


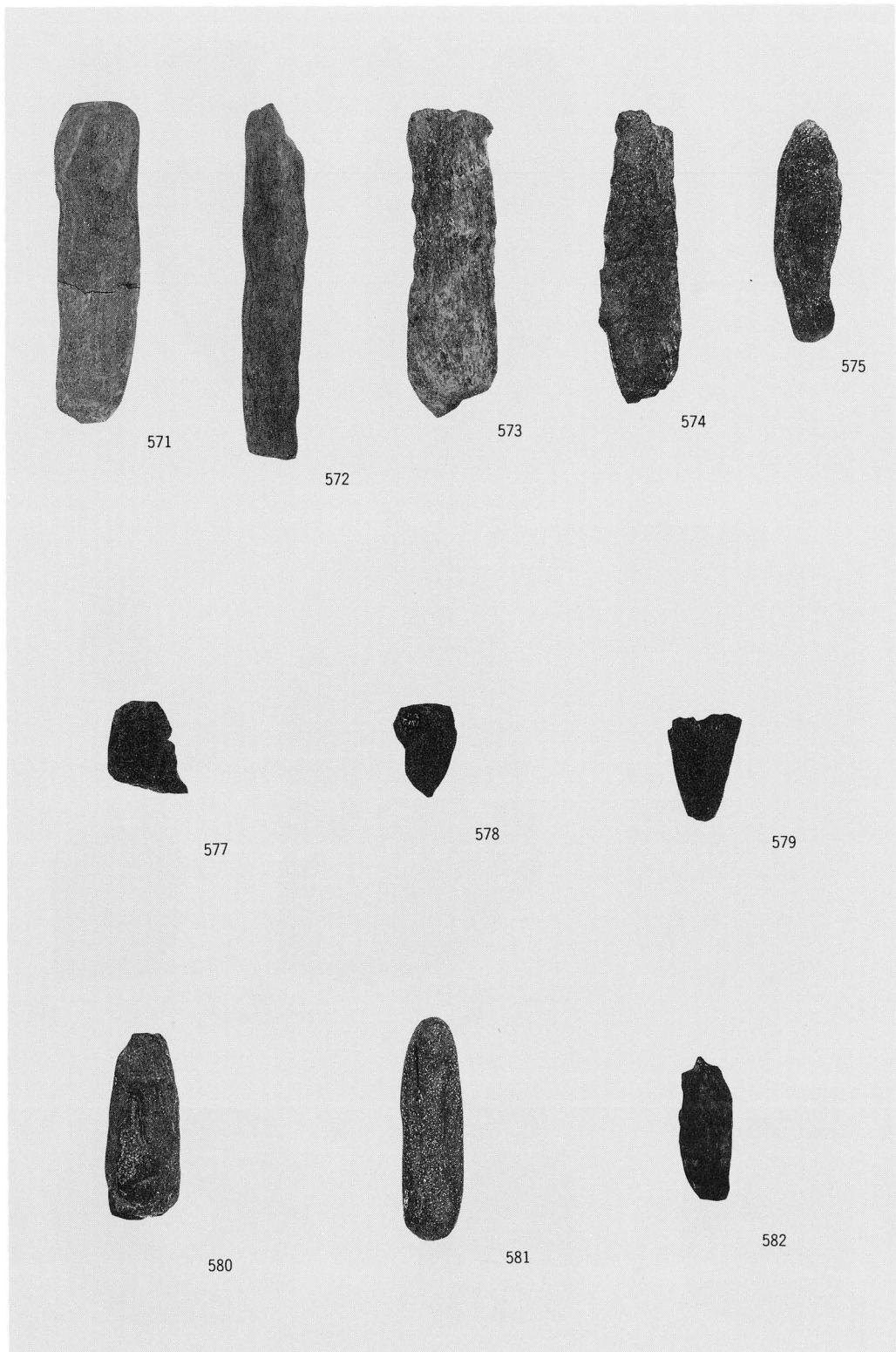
546



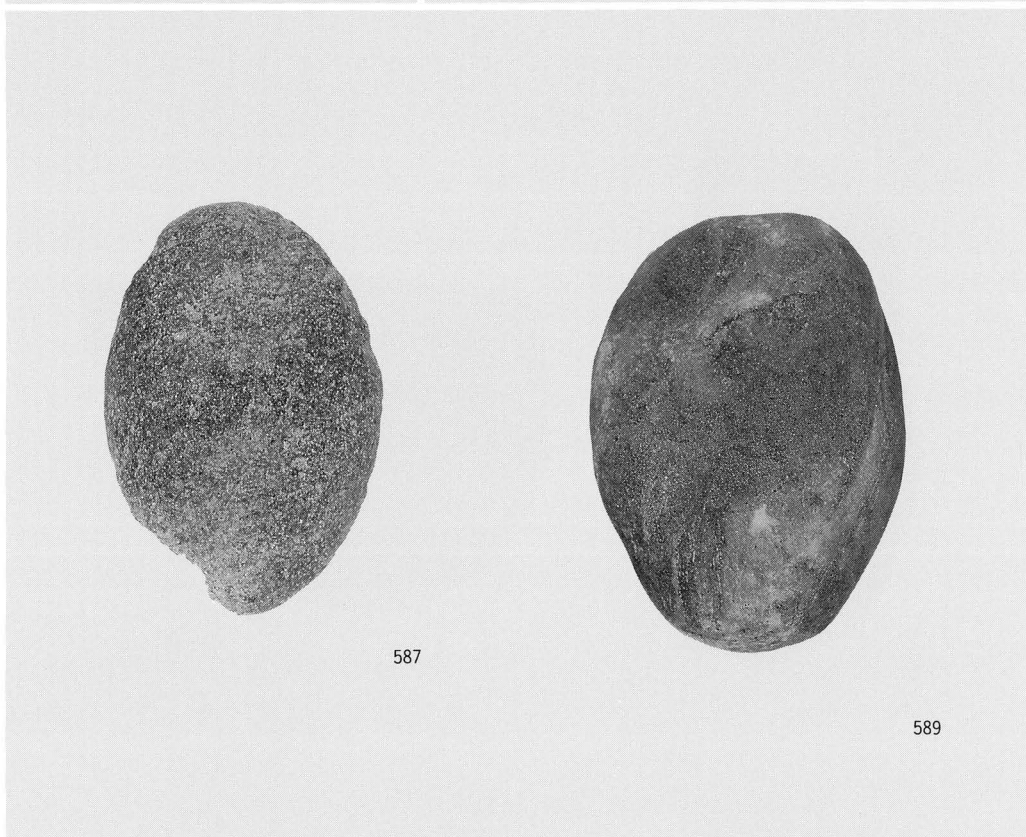
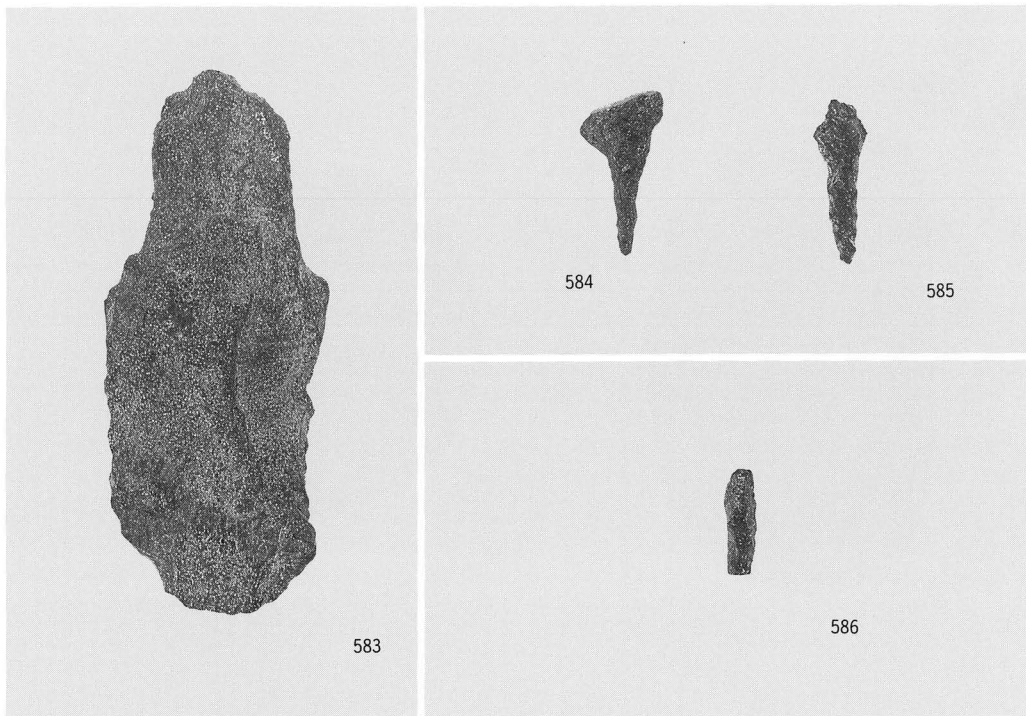
547

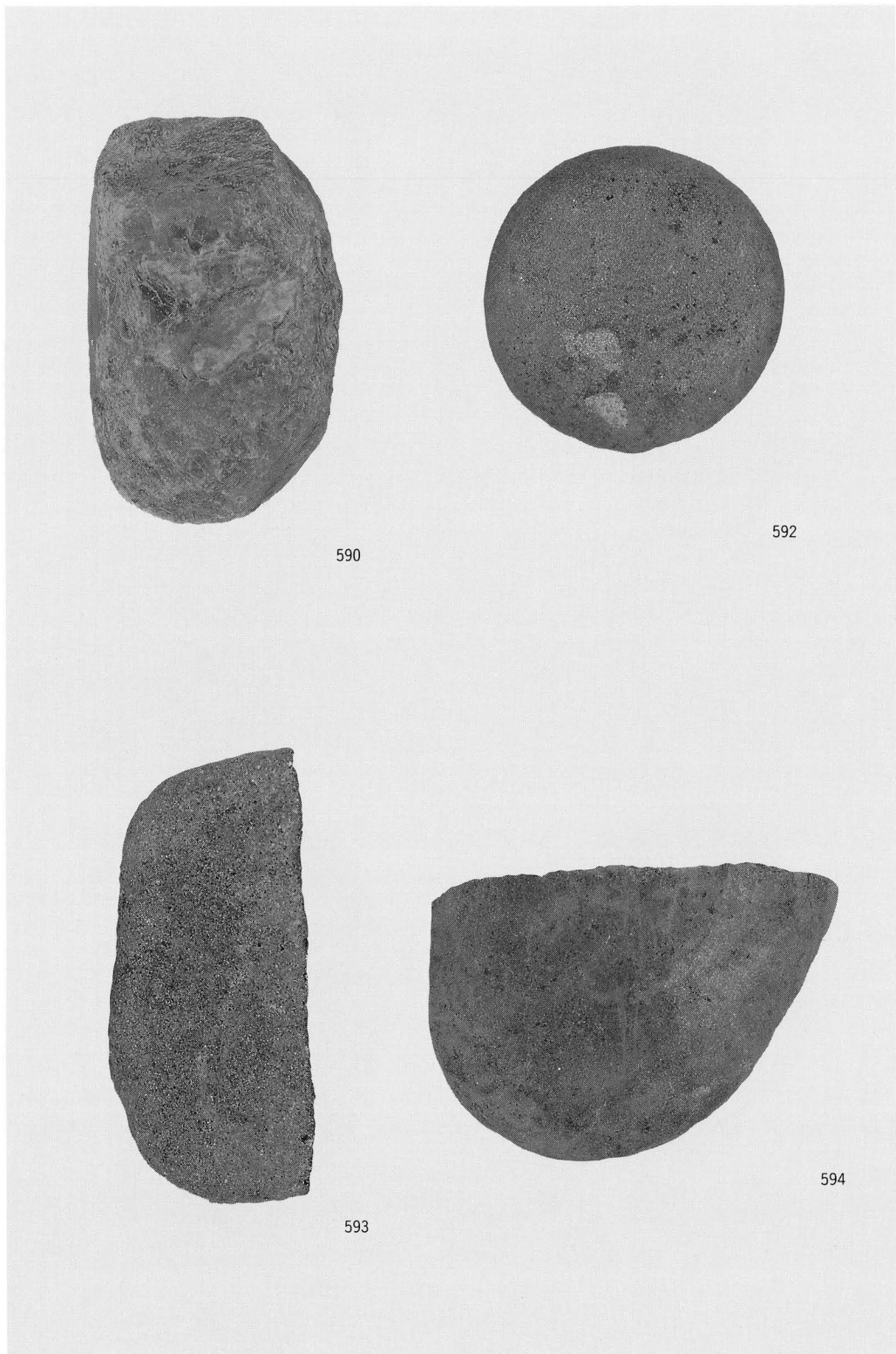


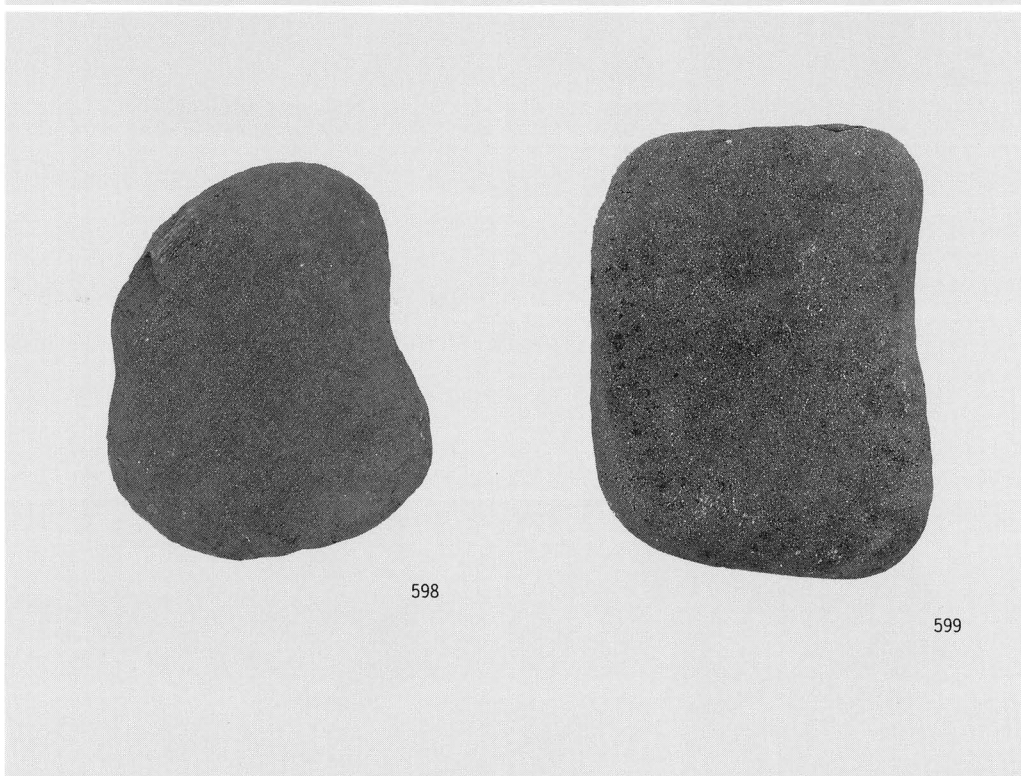
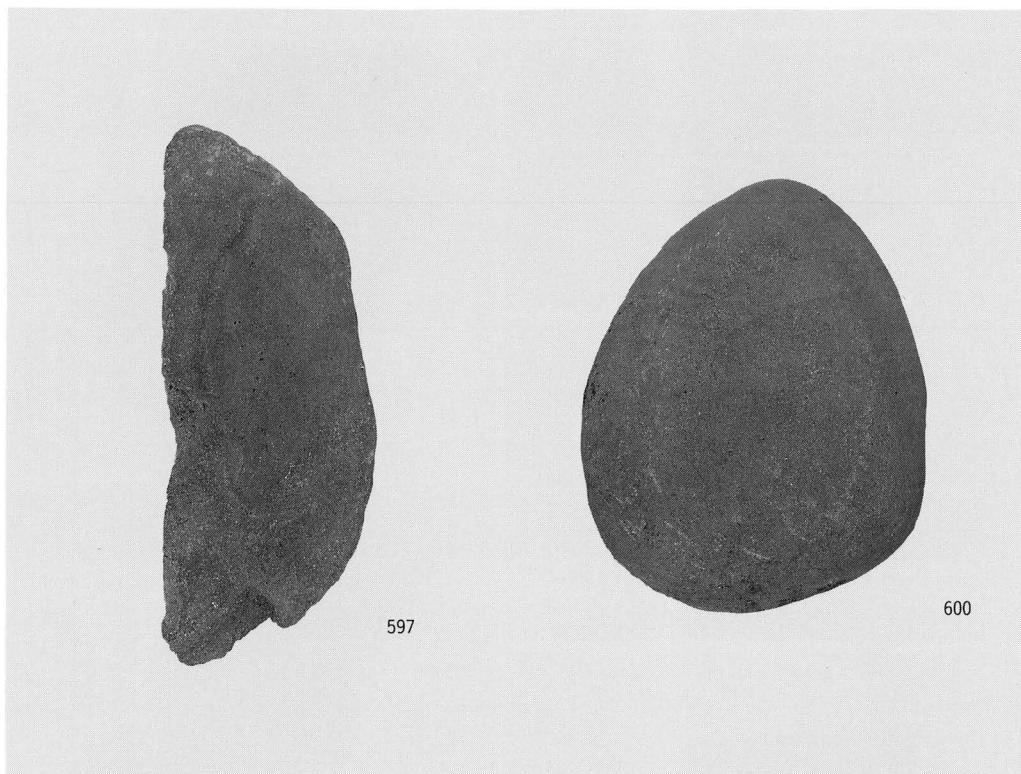


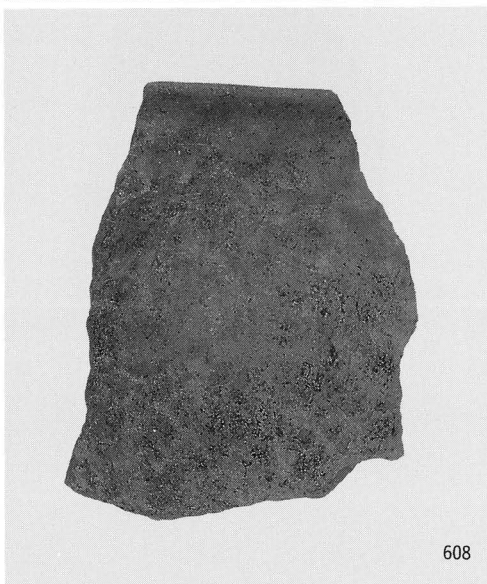
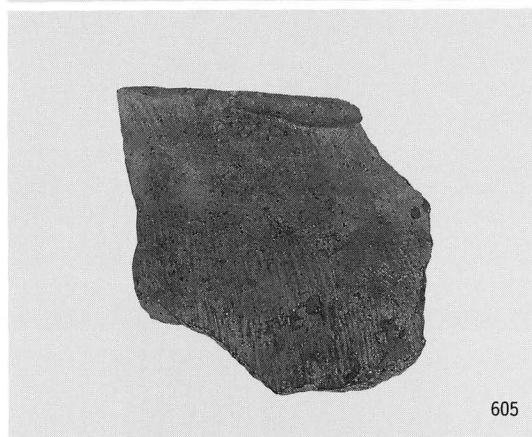
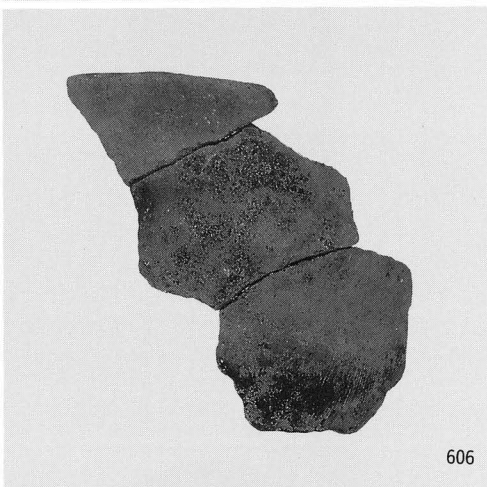
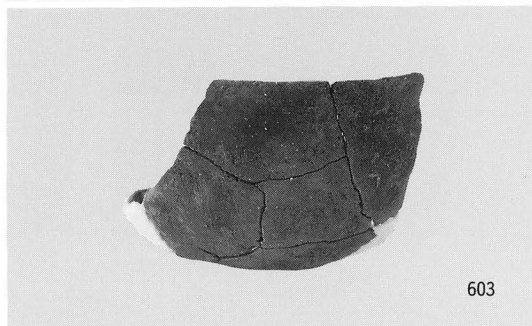
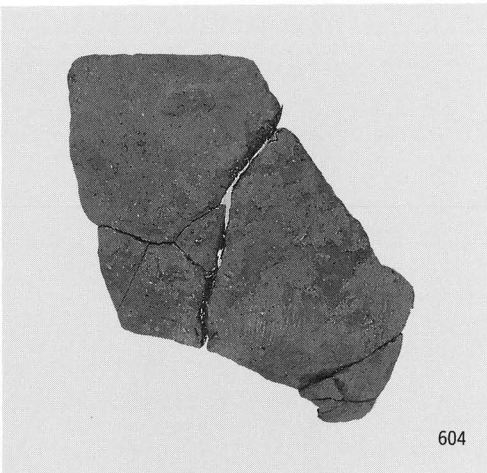
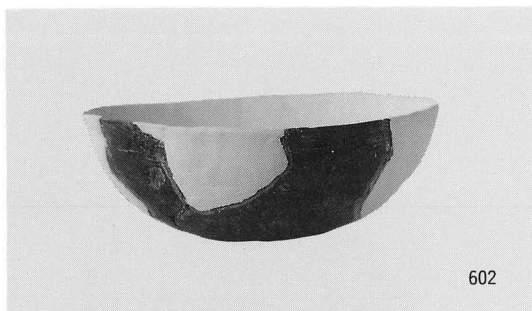


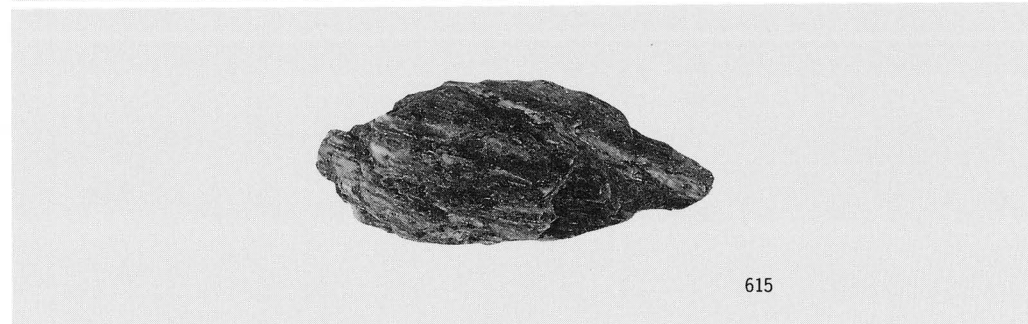
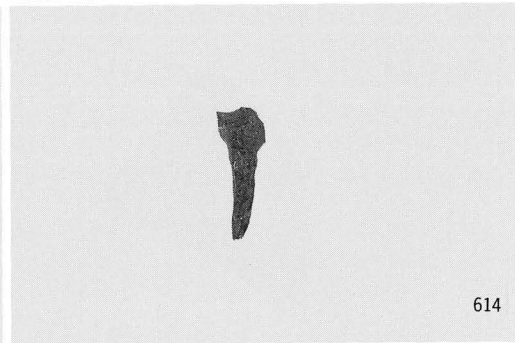
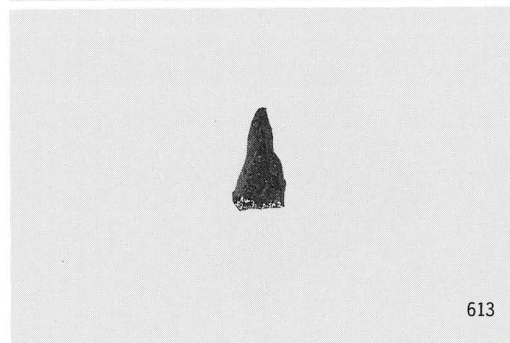
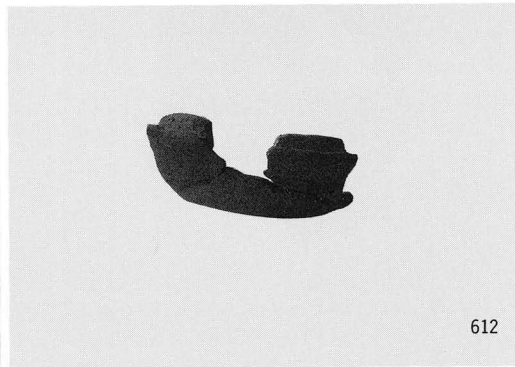
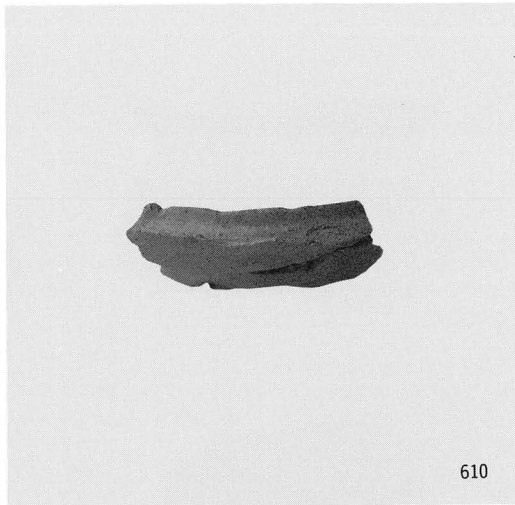
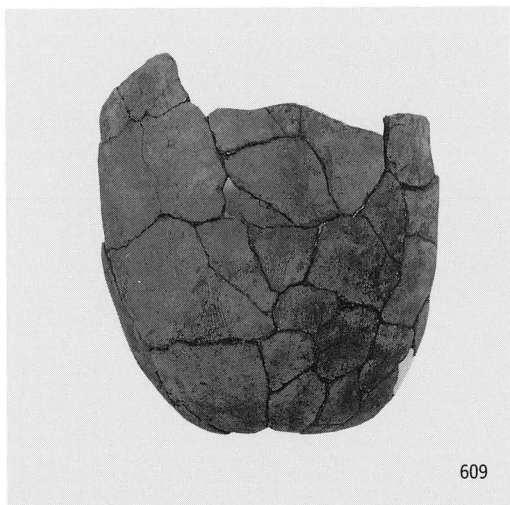
出土遺物 (51)

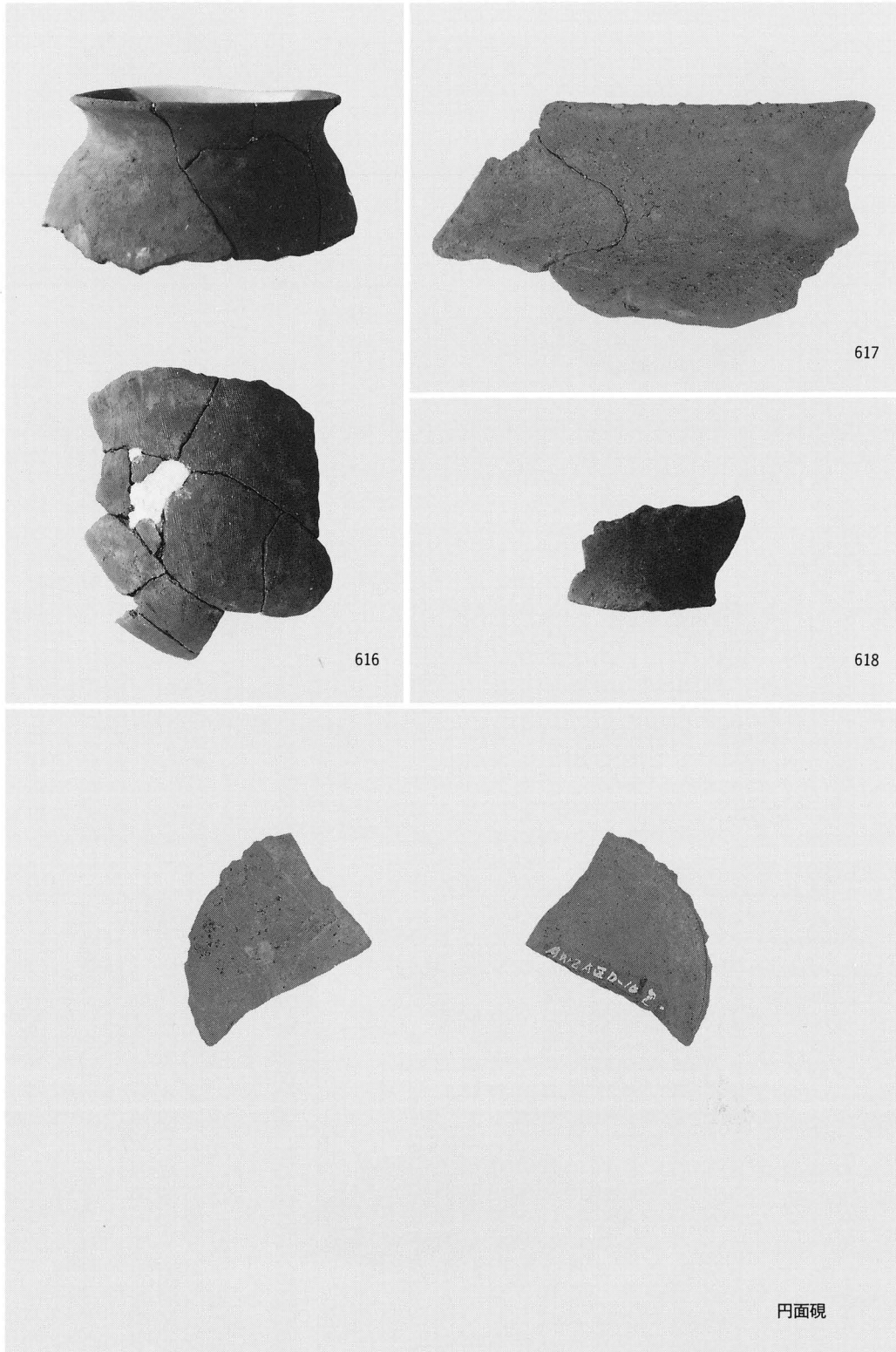










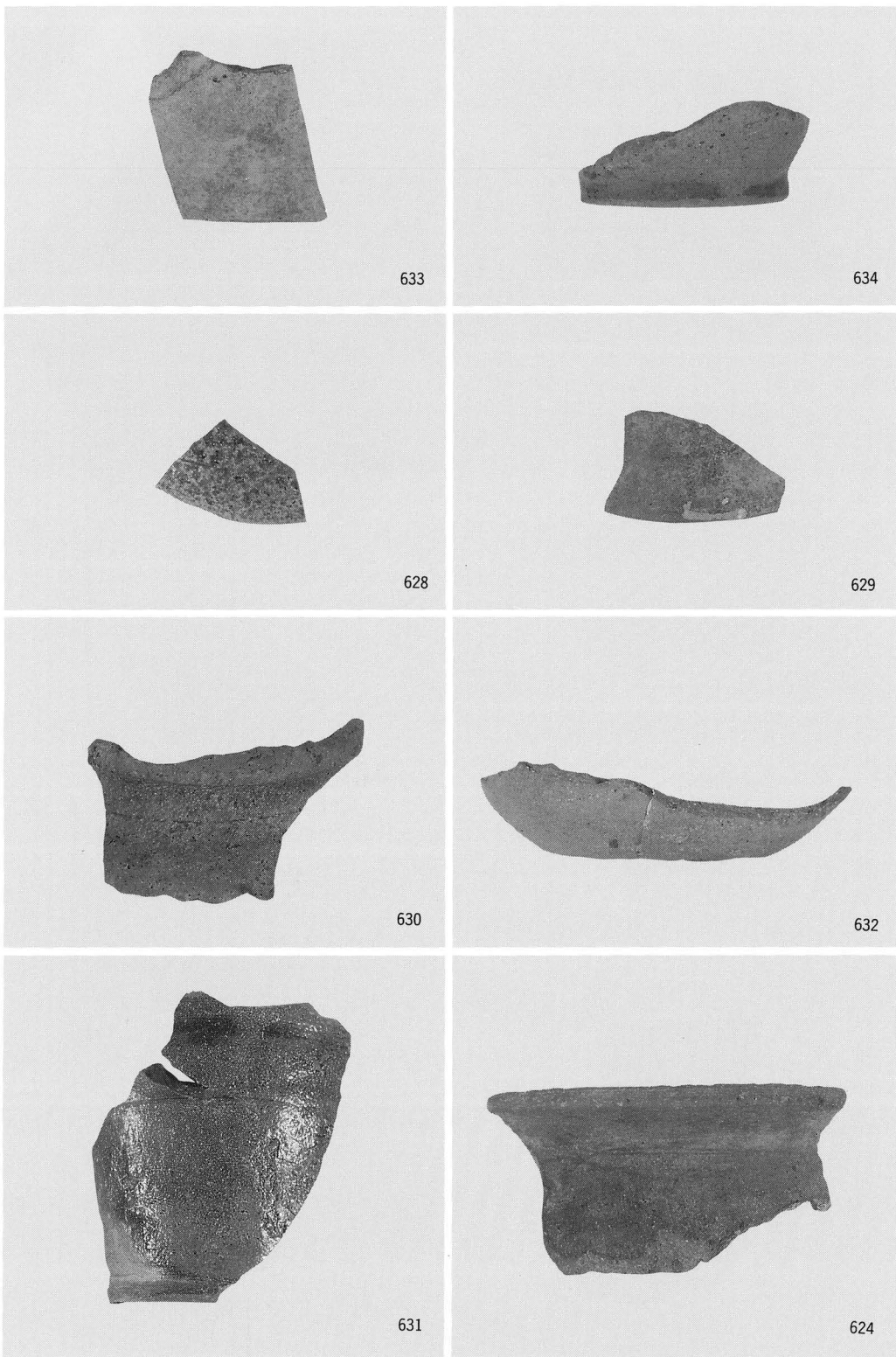


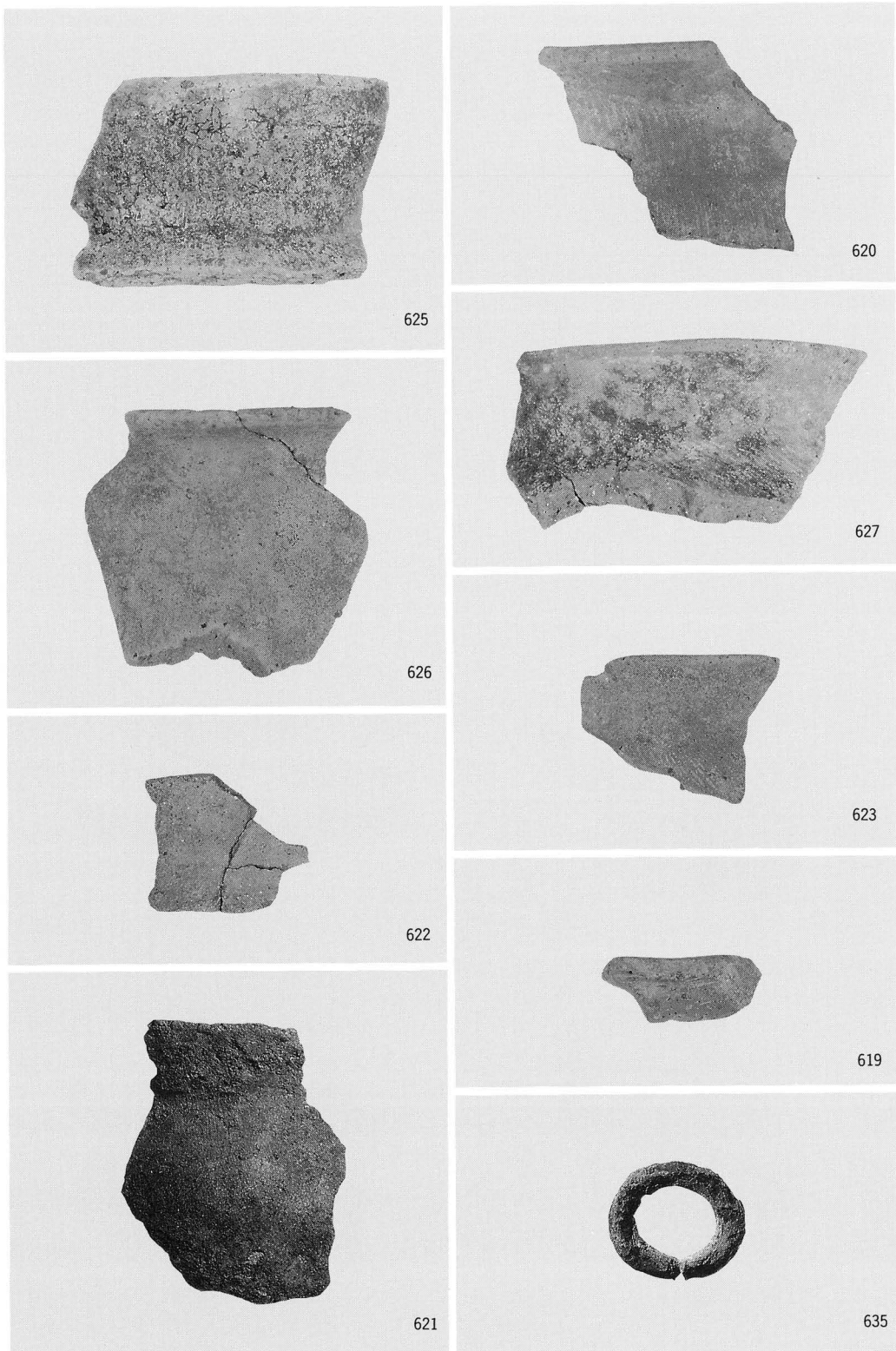
616

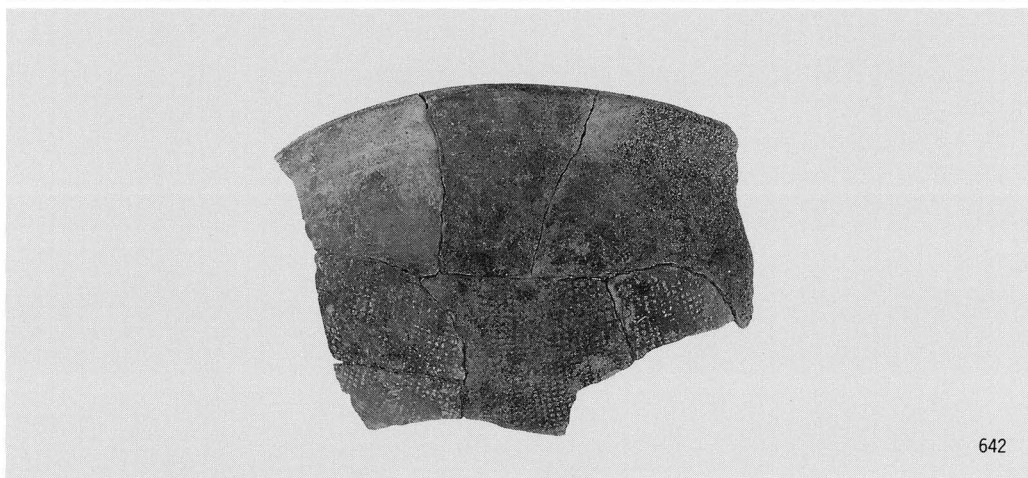
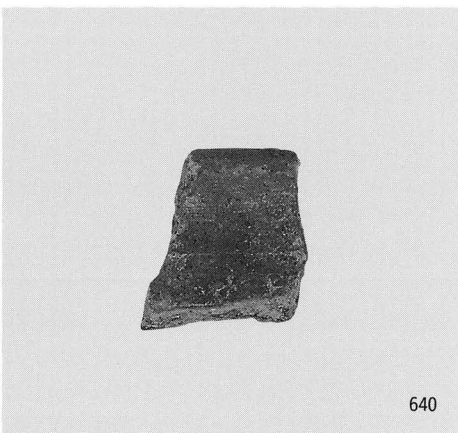
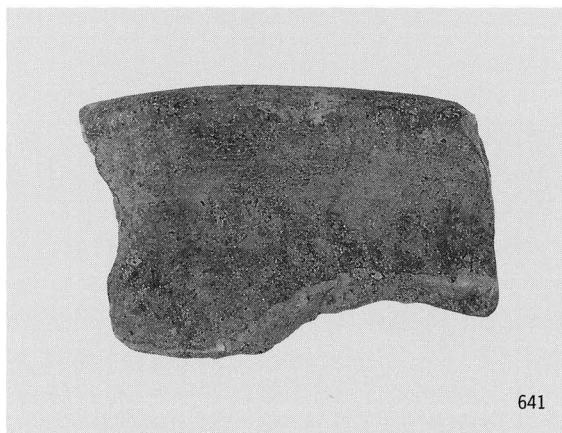
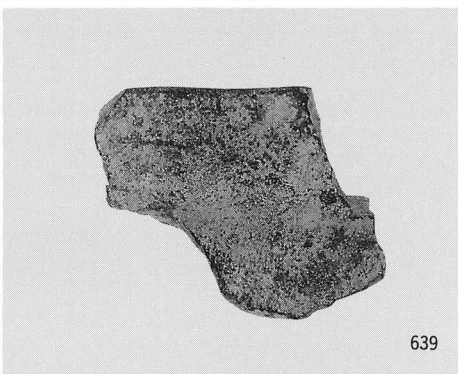
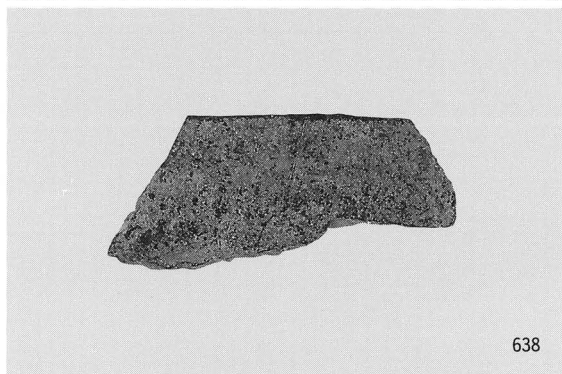
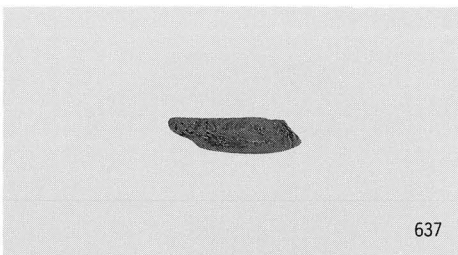
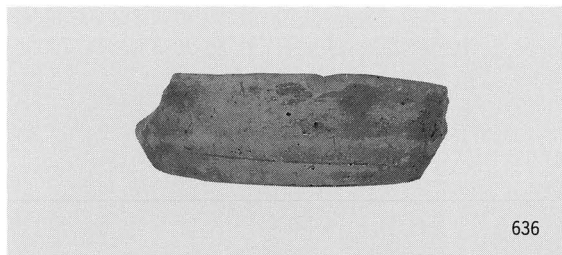
617

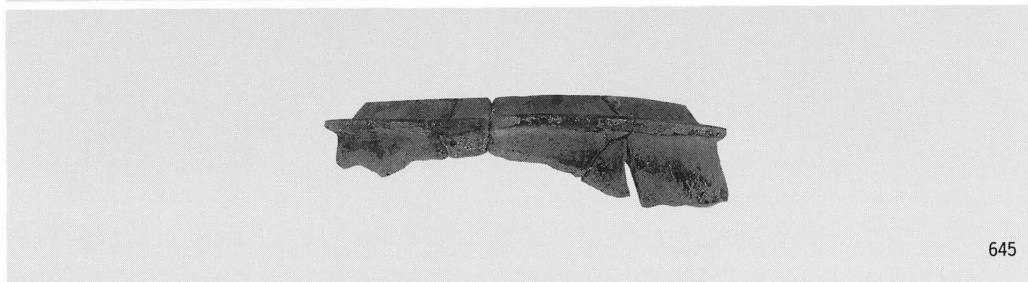
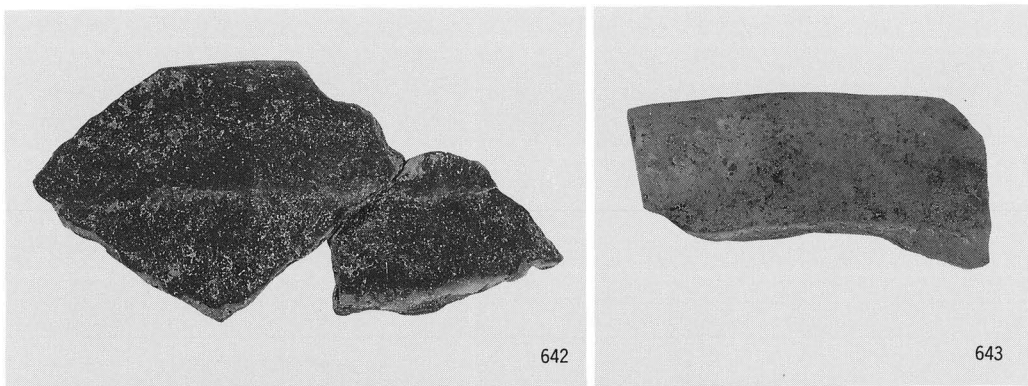
618

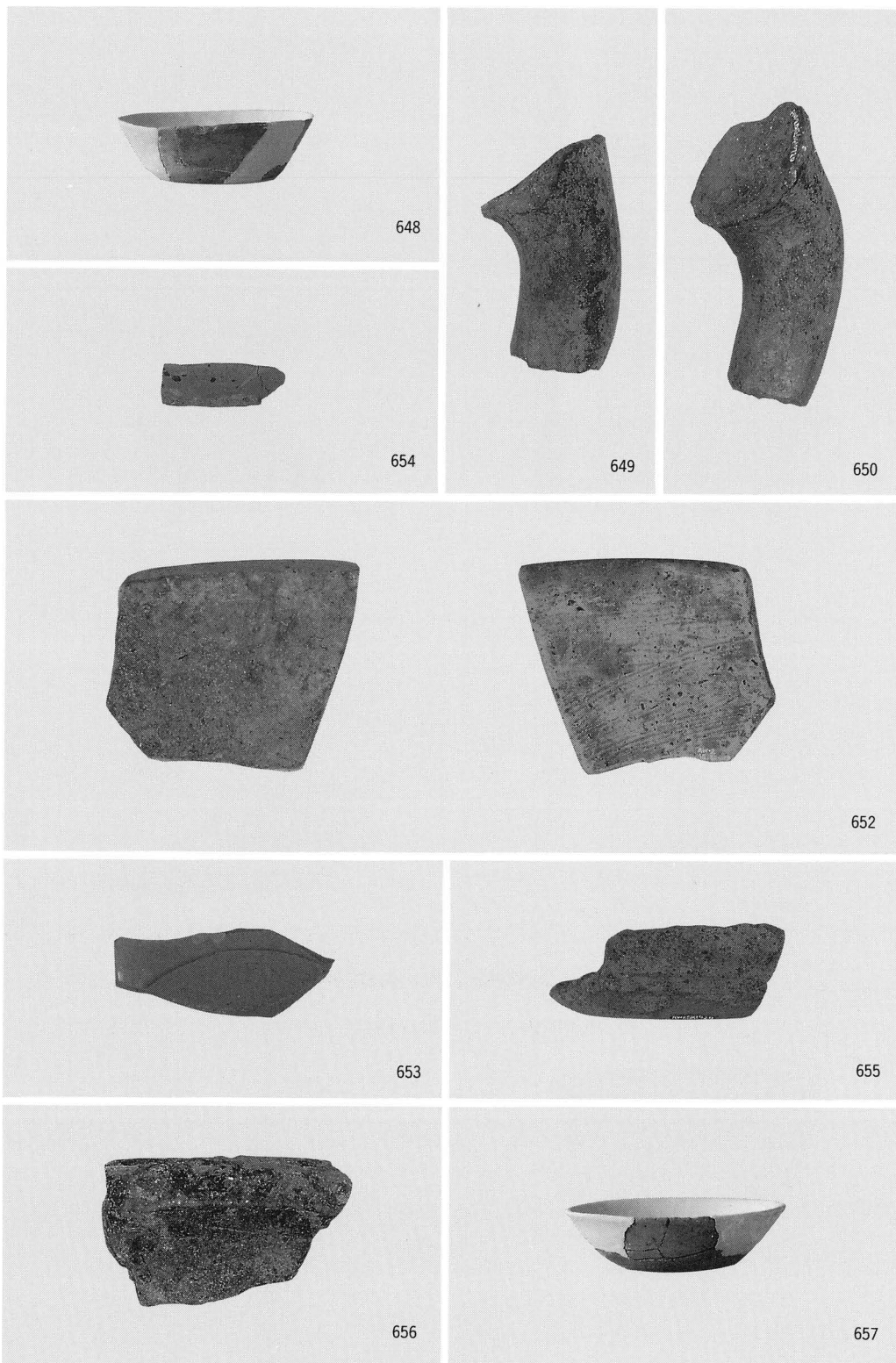
円面碗

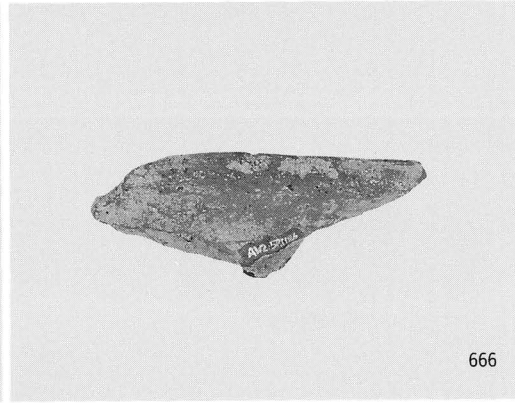
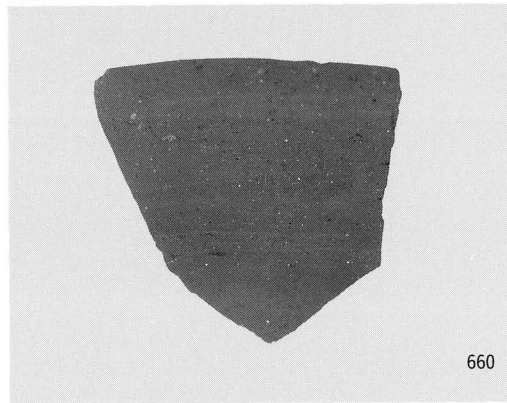
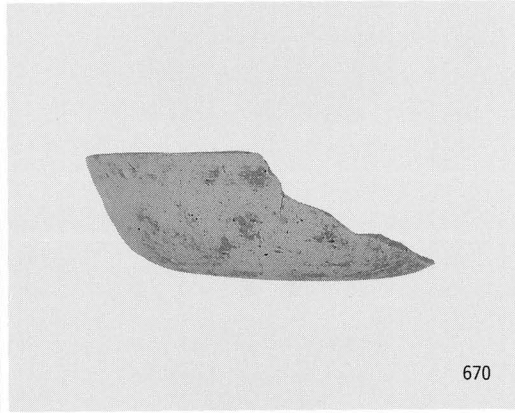
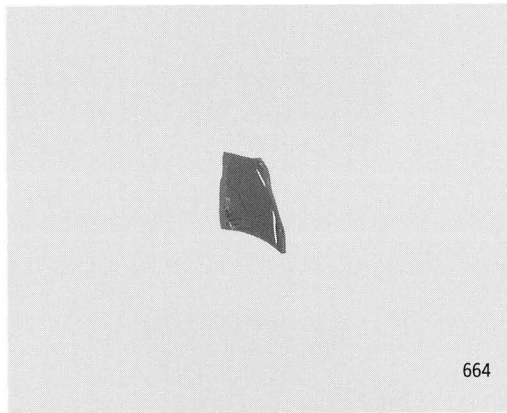
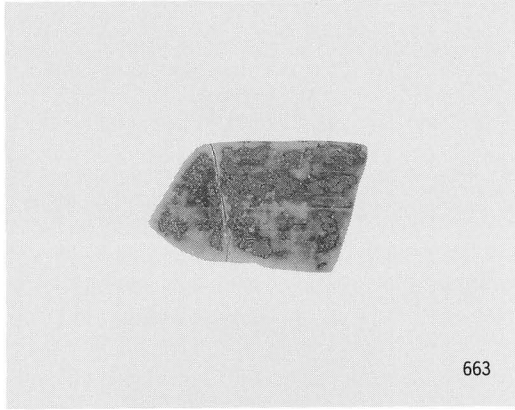
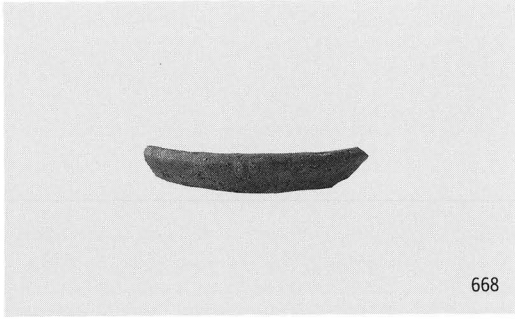
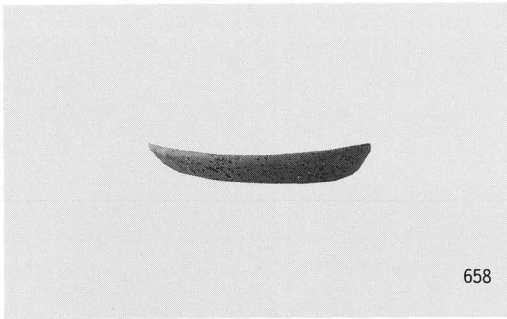


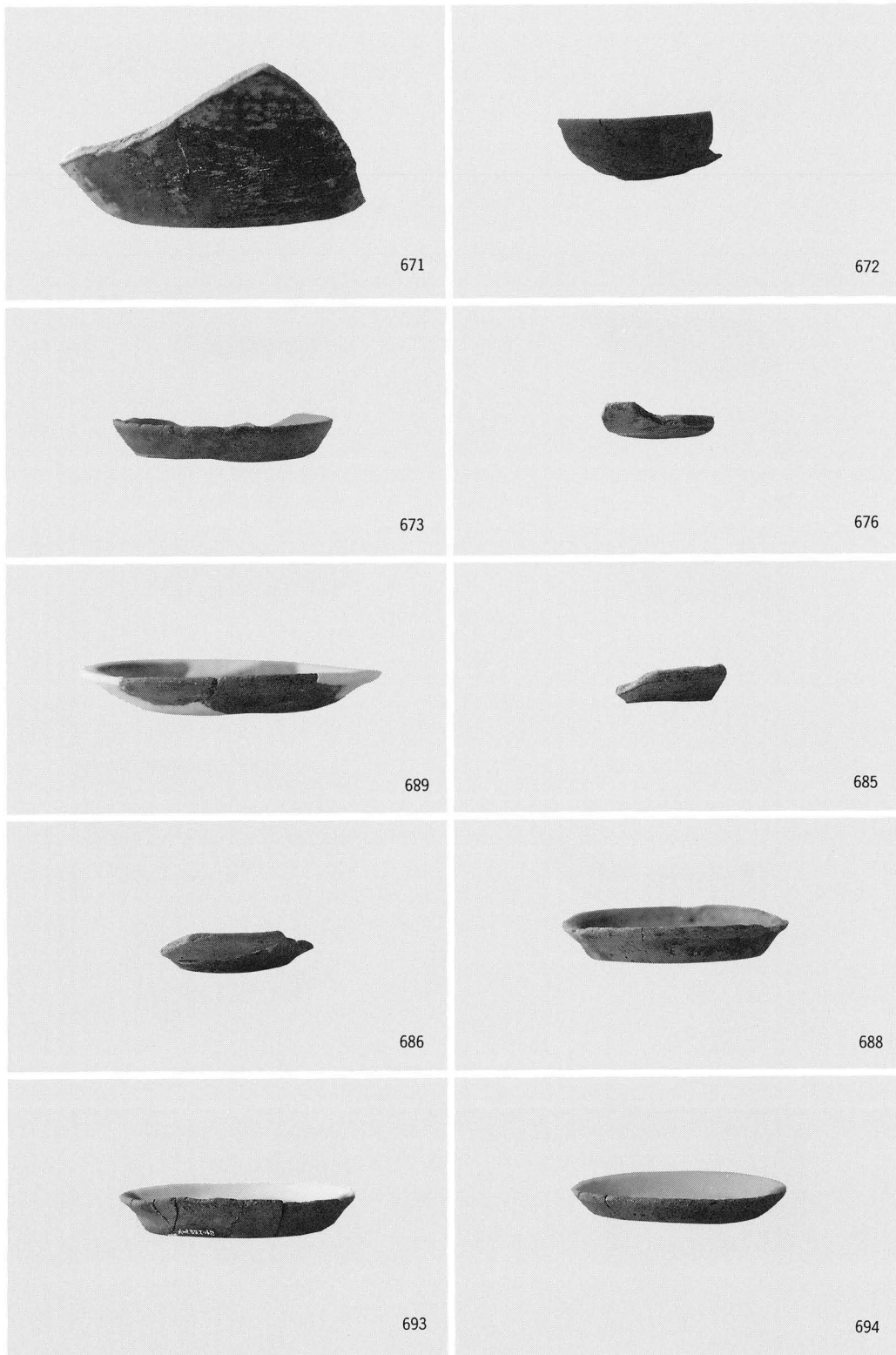


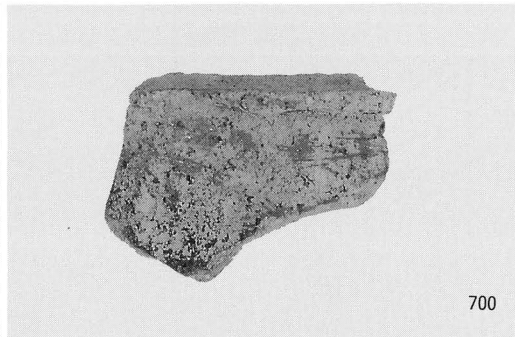
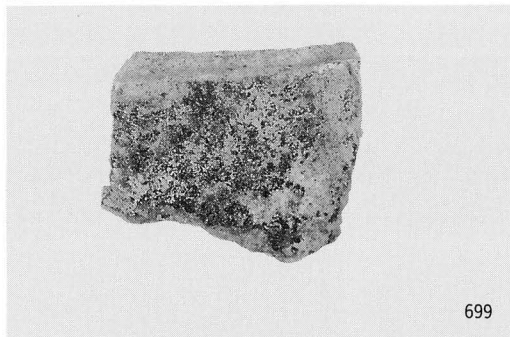
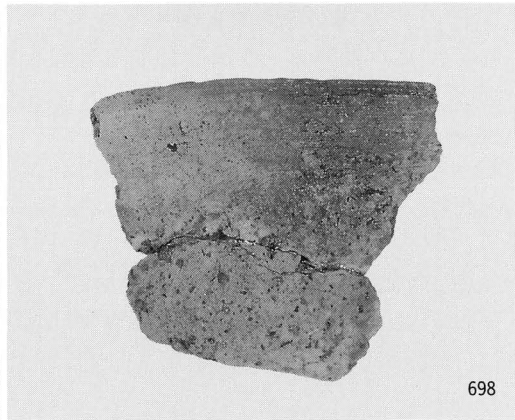
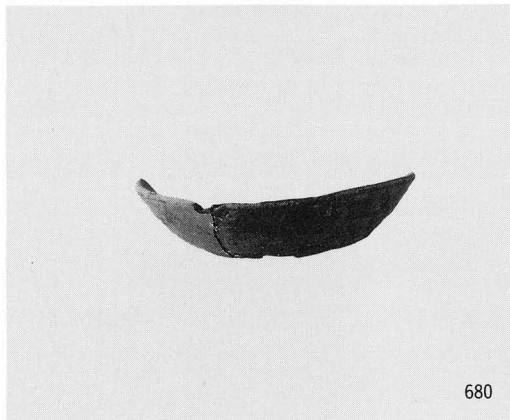
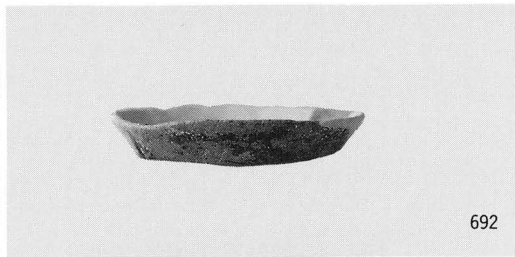
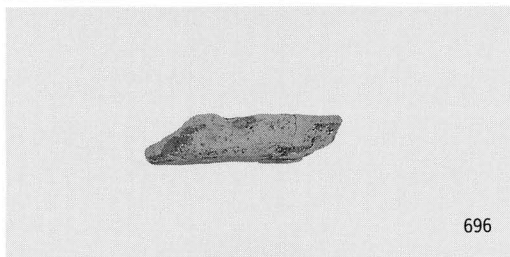
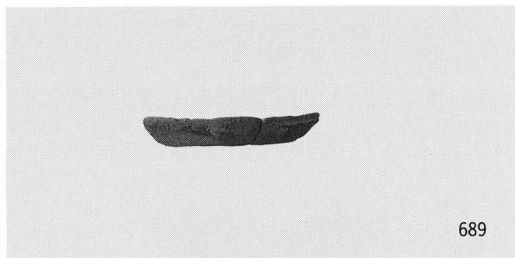
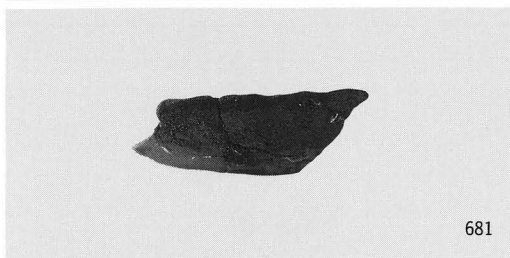
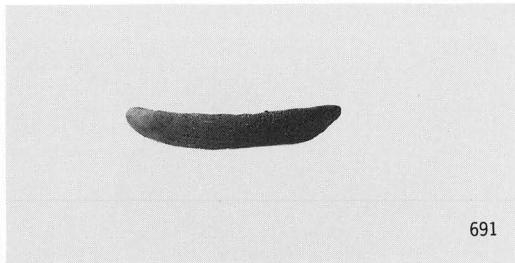
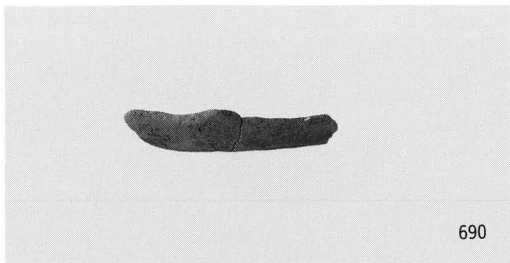


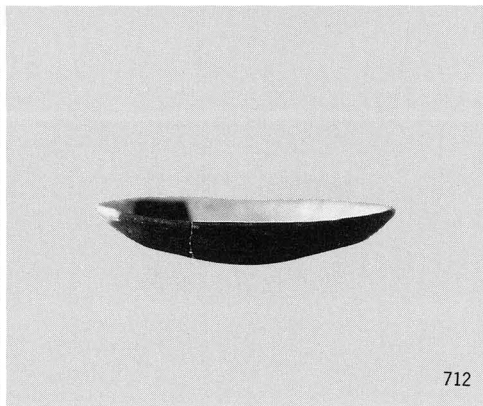
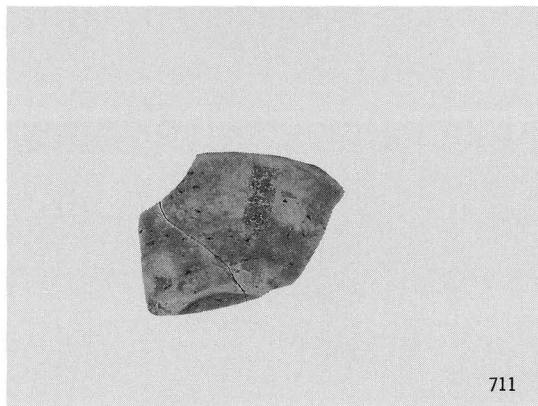
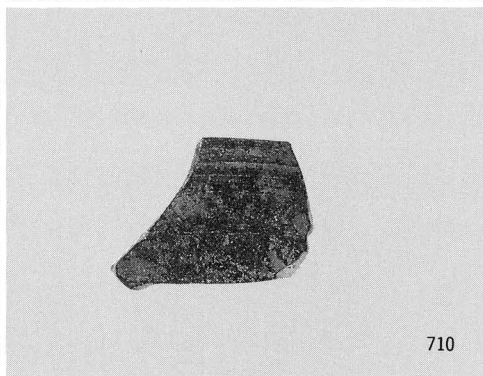
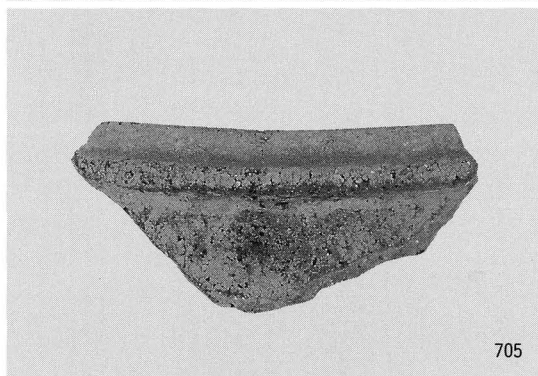
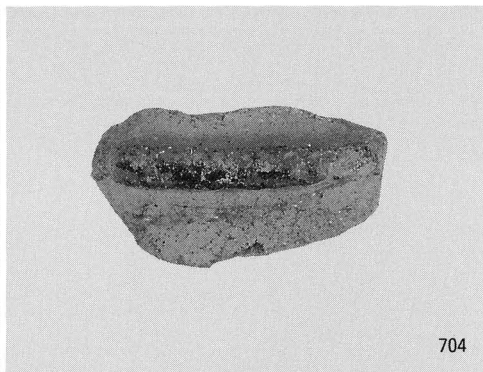
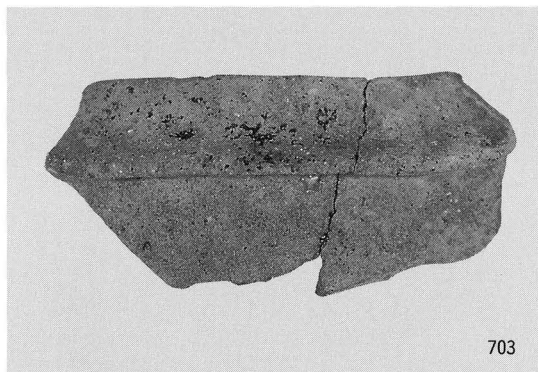
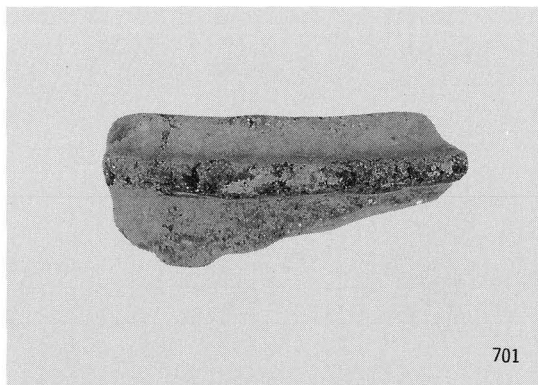


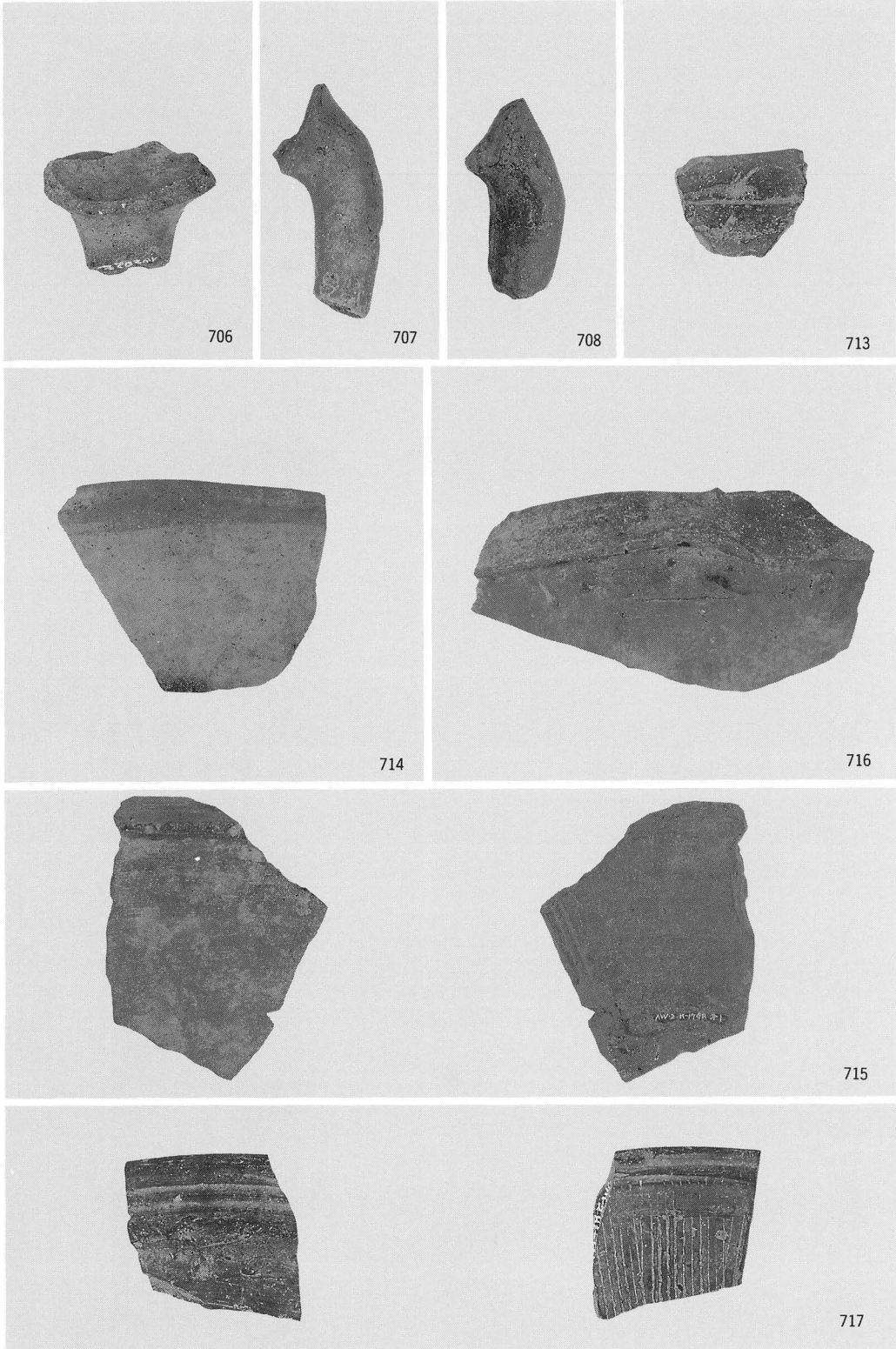




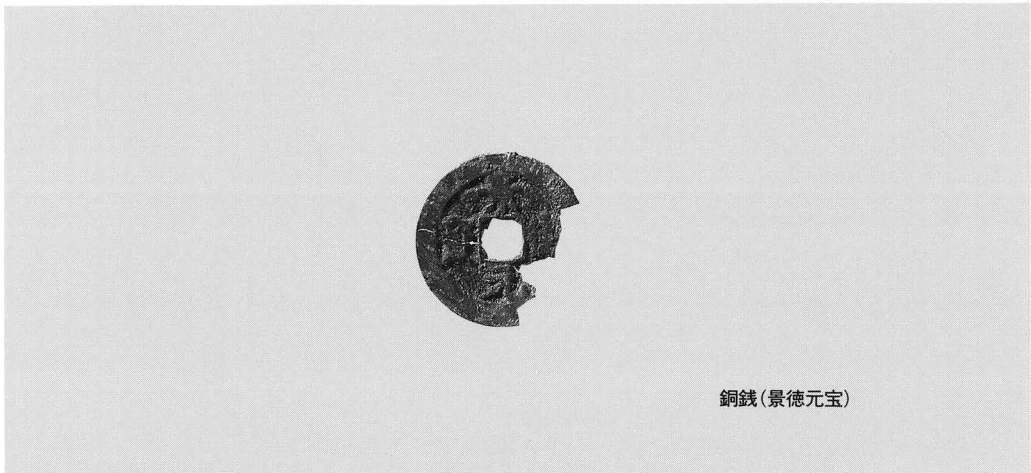
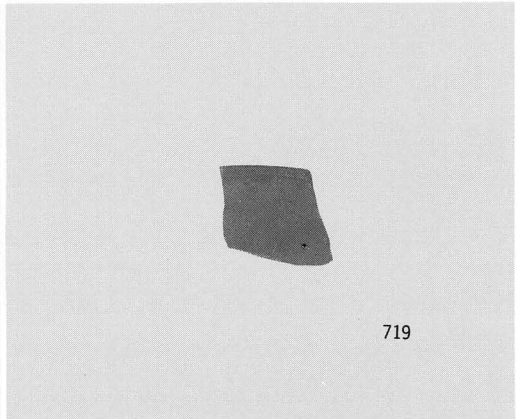
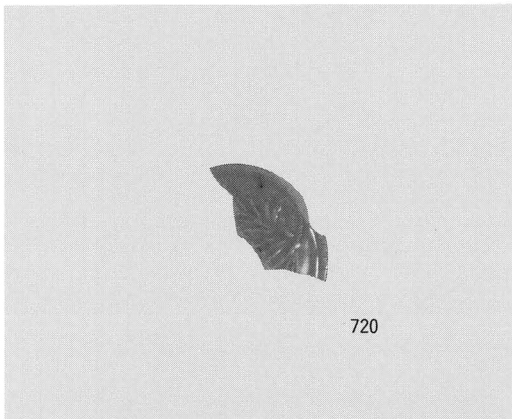
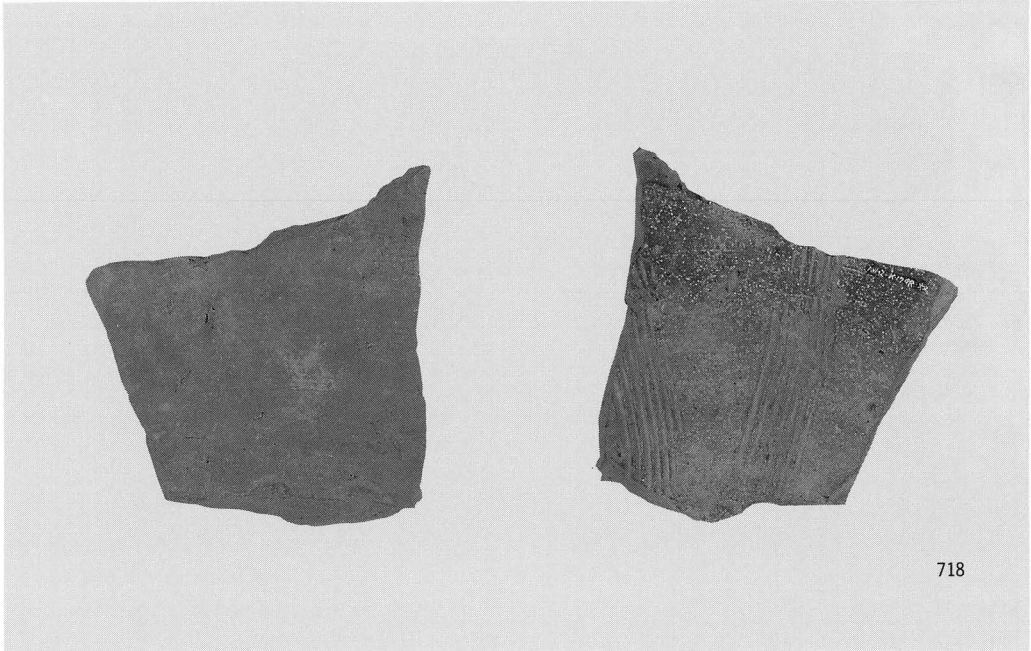








出土遺物 (67)



徳島県埋蔵文化財センター調査報告書第5集

四国縦貫自動車道建設に伴う埋蔵文化財発掘調査報告 5

発行日 平成6年3月31日

編集 財団法人 徳島県埋蔵文化財センター
〒779-01 徳島県板野郡板野町川端字関ノ本25番
TEL (0886) 72-4545

発行 徳島県教育委員会
財団法人 徳島県埋蔵文化財センター
日本道路公団

印刷 (協)徳島印刷センター

四国縦貫自動車道建設に伴う
埋蔵文化財発掘調査報告書

5

日吉谷遺跡付図

日吉谷遺跡遺構全体図 (S : 1 / 100)

- 付図 1 日吉谷遺跡 A・B・C 区遺構配置図
- 付図 2 日吉谷遺跡 D 区遺構配置図
- 付図 3 日吉谷遺跡 E 区遺構配置図
- 付図 4 日吉谷遺跡 F・G・H・I 区遺構配置図