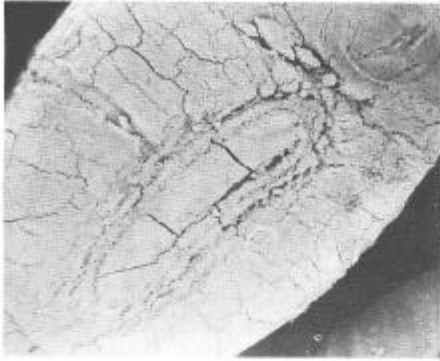
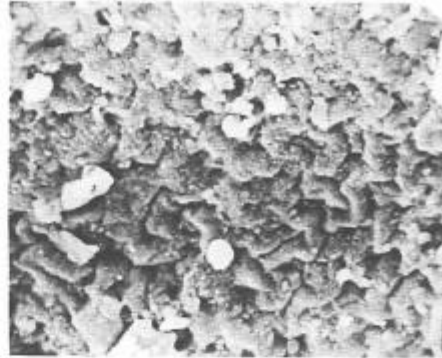


第13図 案内Ⅲ出土炭化粒

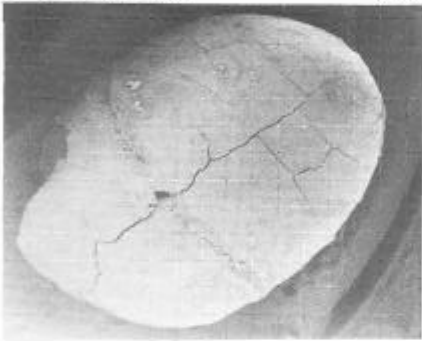
a アズキ(膨脹粒) ×10



b 同左 ×2500



c アズキ(中粒) ×10

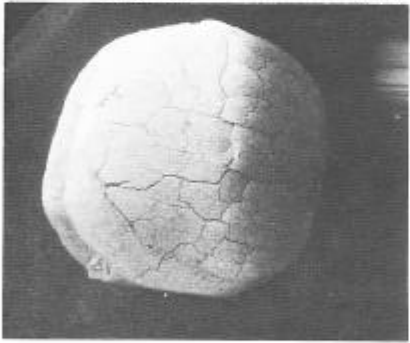


d アズキ(中粒) ×10

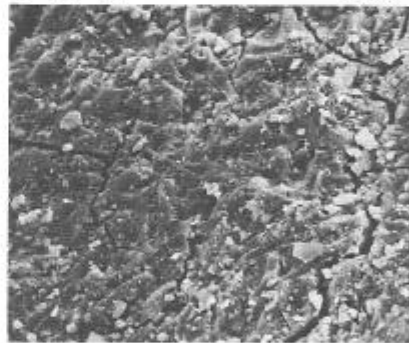


第14図 案内Ⅲ出土炭化粒

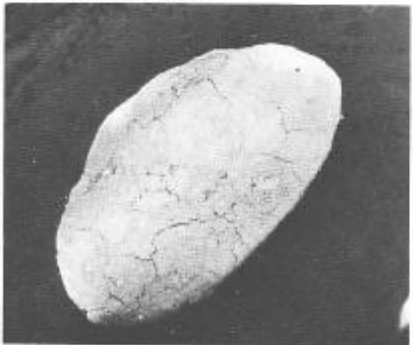
a マメ類(小粒) ×10



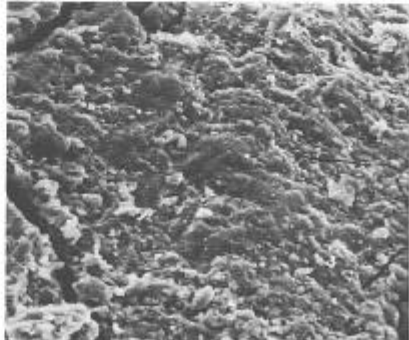
b 同左 ×500



c マメ類(小粒)

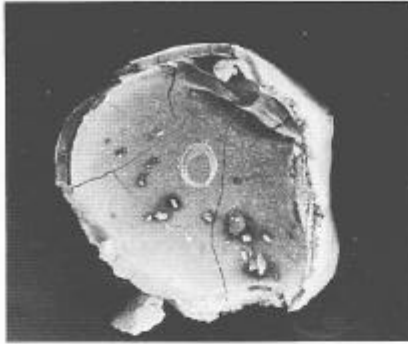


d 同左 ×500

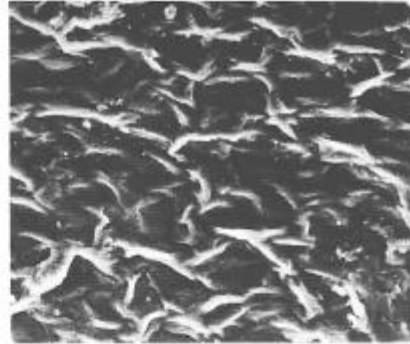


第15図 案内Ⅲ出土炭化粒

a マメ類種皮の内側 ×10



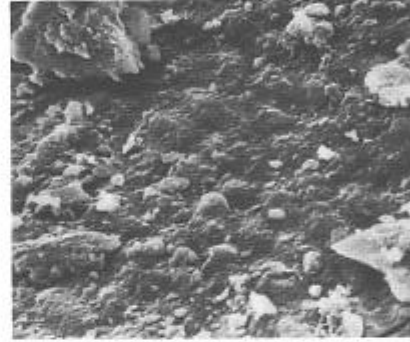
b 同左 ×500



c マメ類(中粒)や不正形 ×10

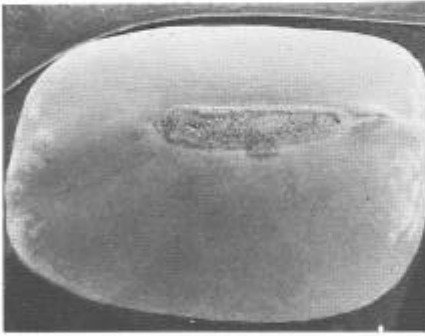


d 同左(アズキ?) ×1500

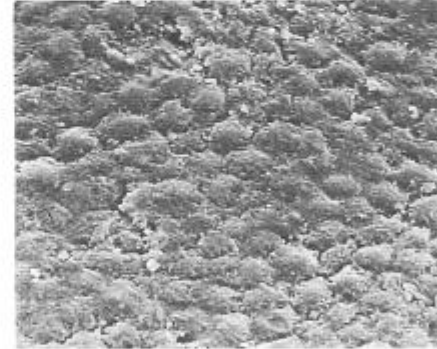


第16図 現生アズキ種子

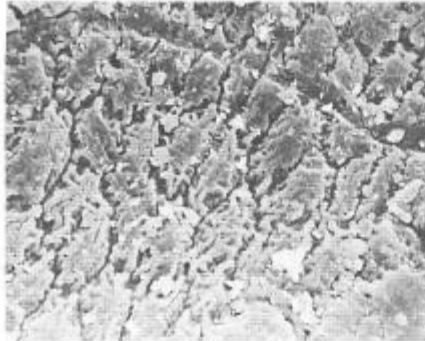
a 同左 ×10



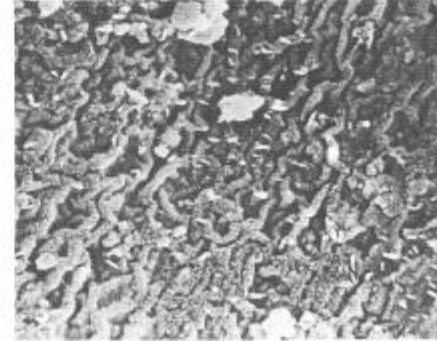
b 同左 ×500



c 同上 ×1000



d 同左 ×2000

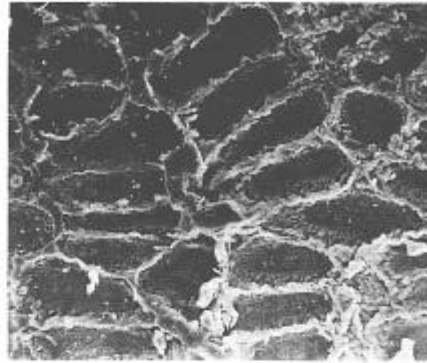


第17図 現生リョクトウ種子

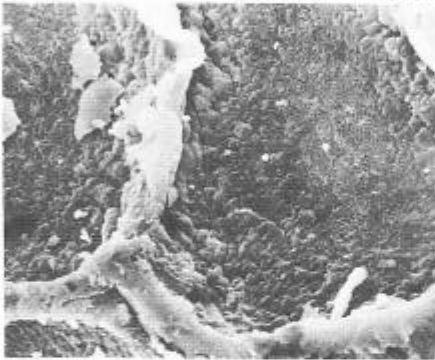
a $\times 10$



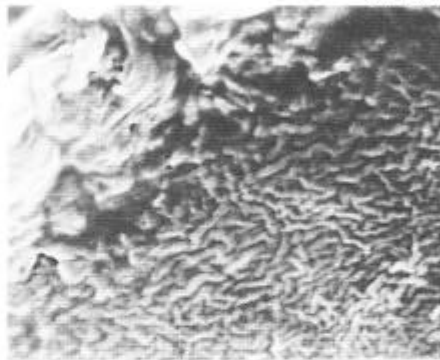
b 同 左 $\times 200$



c 同 上 $\times 1000$



d 同 左 $\times 2500$

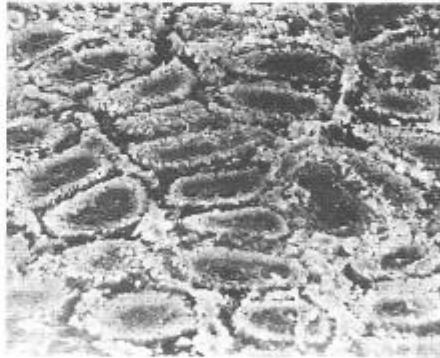


第18図 現生ケツルアズキ種子

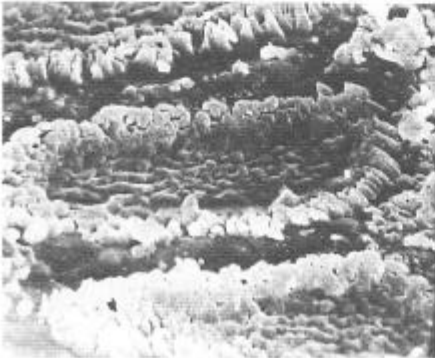
a $\times 10$



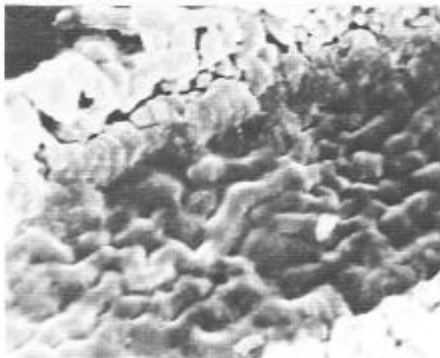
b 同 上 $\times 250$



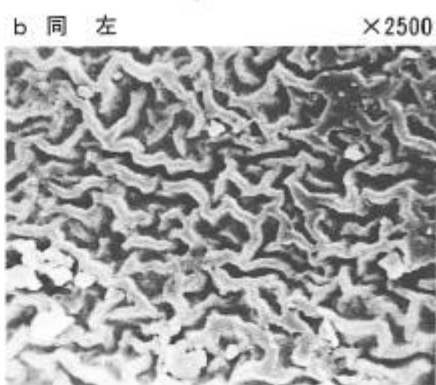
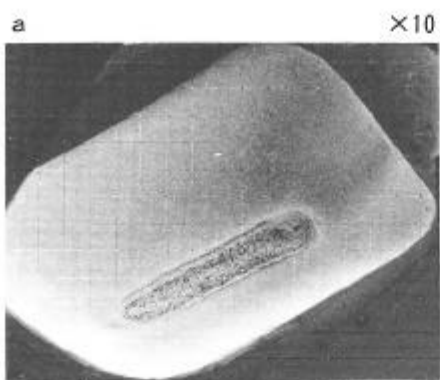
c 同 上 $\times 1000$



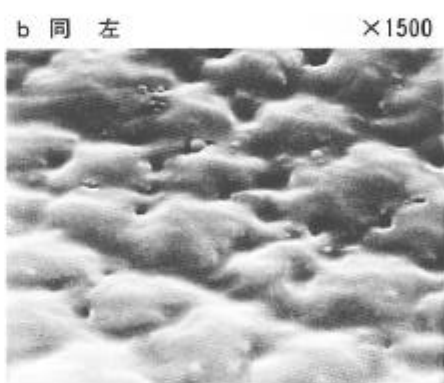
d 同 左 $\times 2500$



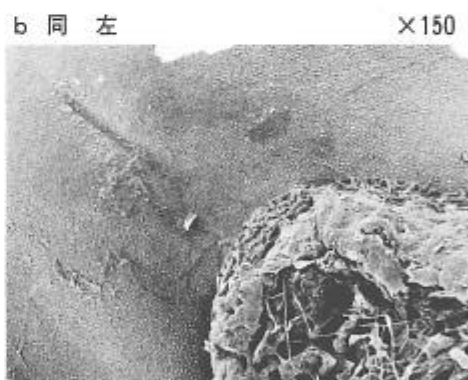
第19図 現生雑草アズキ種子



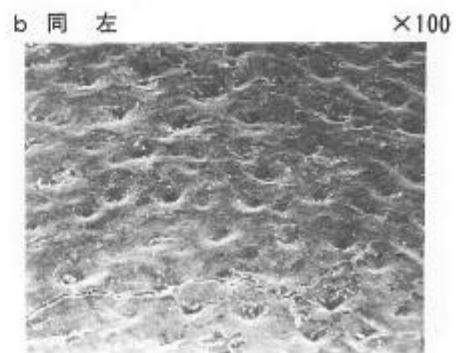
第20図 現生アカマミ種子



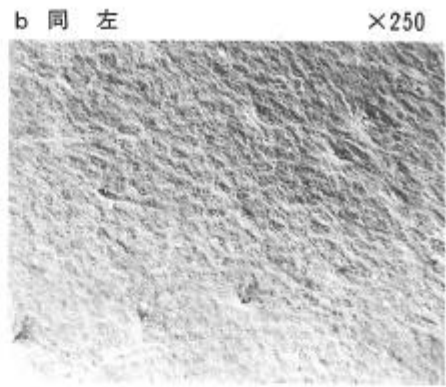
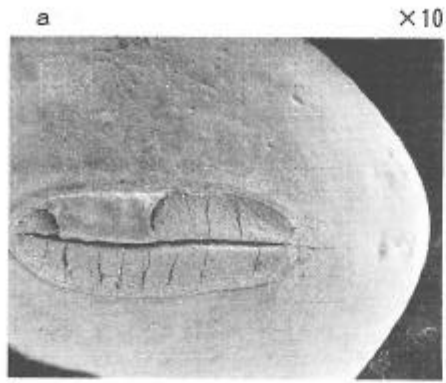
第21図 現生ヤブツルアズキ種子



第22図 現生焼畑ダイズ種子



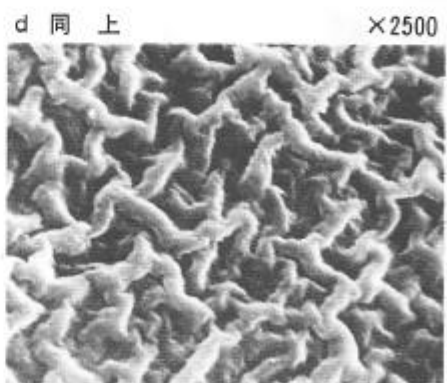
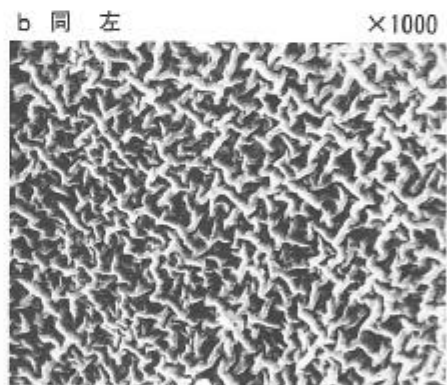
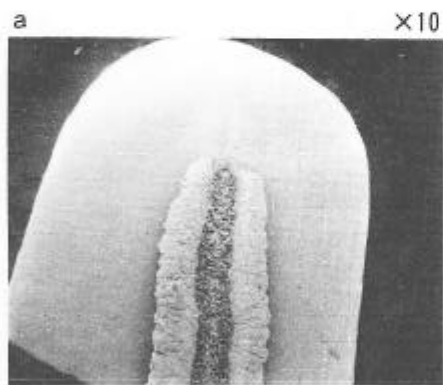
第23図 現生ダイズ種子



第24図 案内Ⅲ出土炭化ダイズ種子

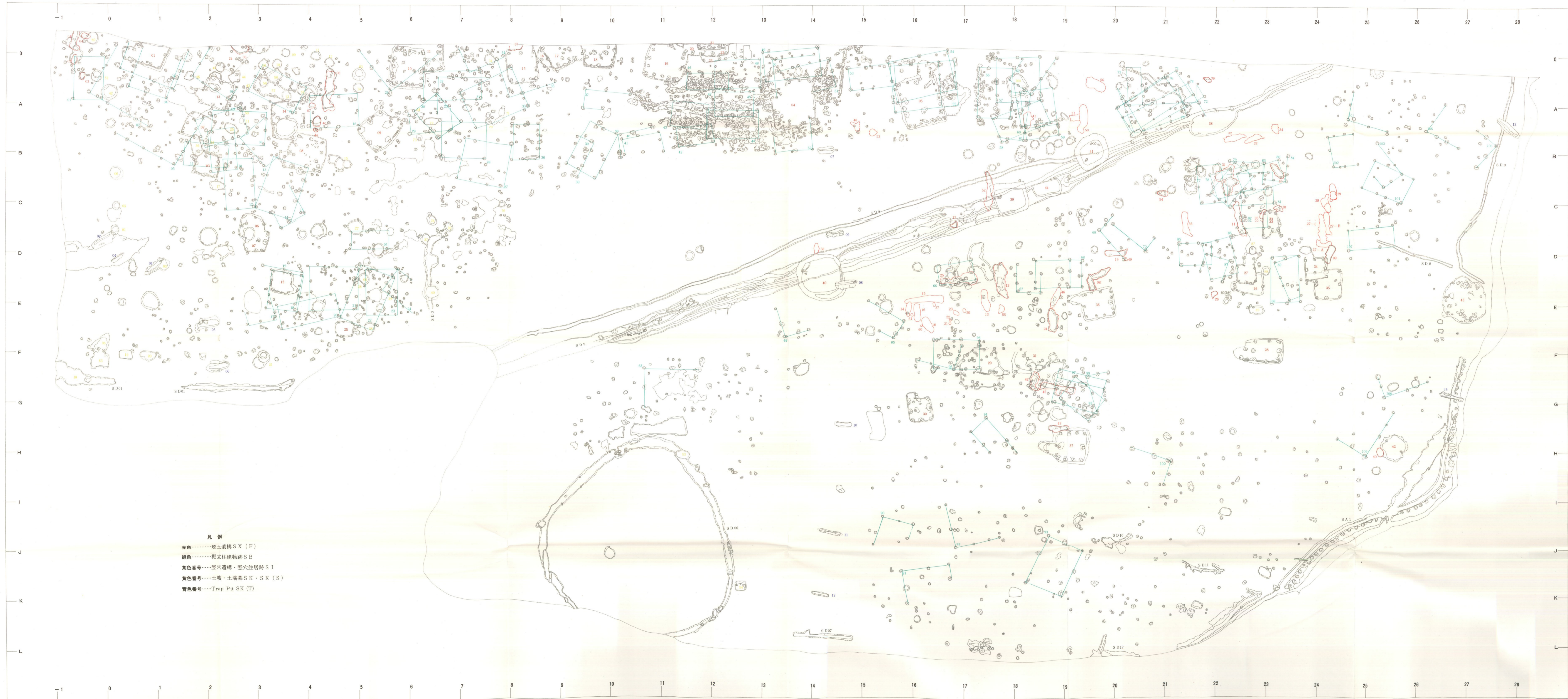


第25図 現生ツルアズキ種子





付図1 妻の神川遺跡位置図



- 凡例
- 赤色.....焼土遺構 S X (F)
 - 緑色.....掘立柱建物跡 S B
 - 茶色番号.....竪穴遺構・竪穴住居跡 S I
 - 黄色番号.....土壇・土塚墓 S K・S K (S)
 - 青色番号.....Trap Pit SK (T)

付図2 妻の神川遺跡 遺構配置図