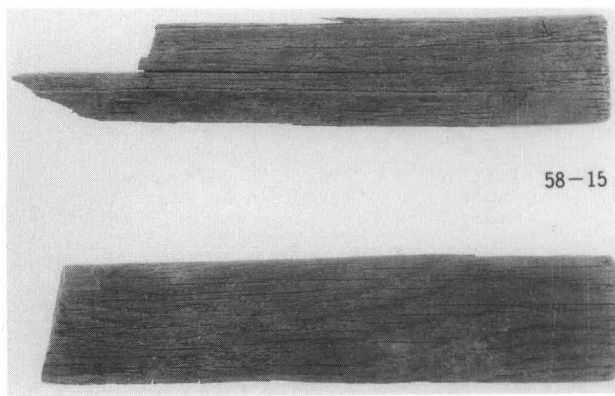
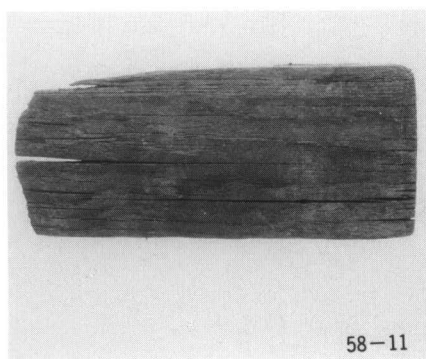
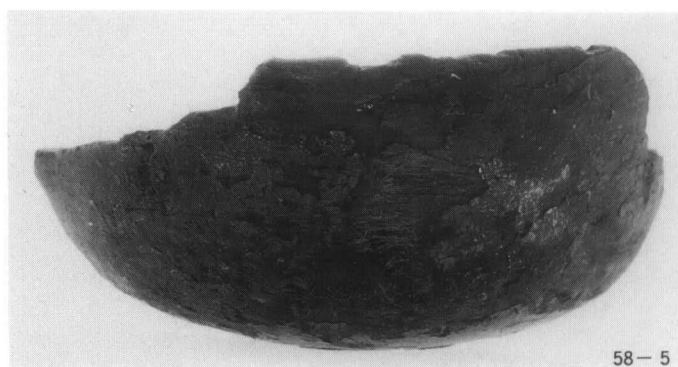
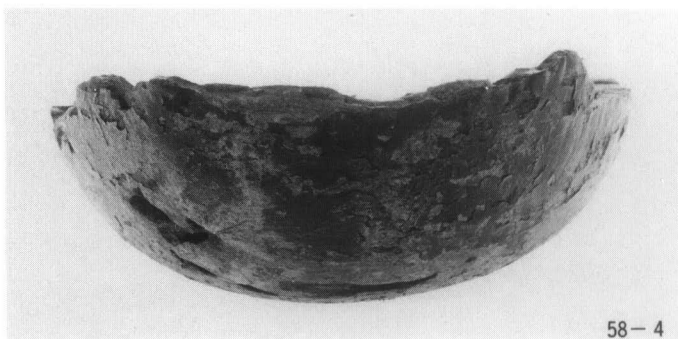
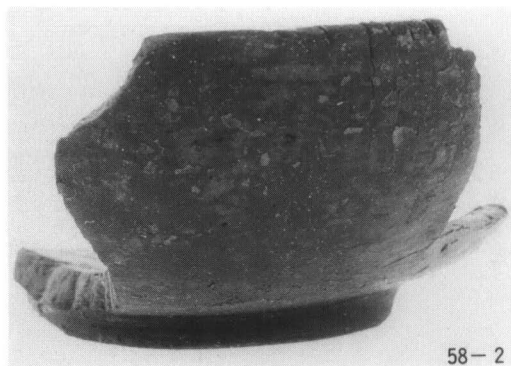
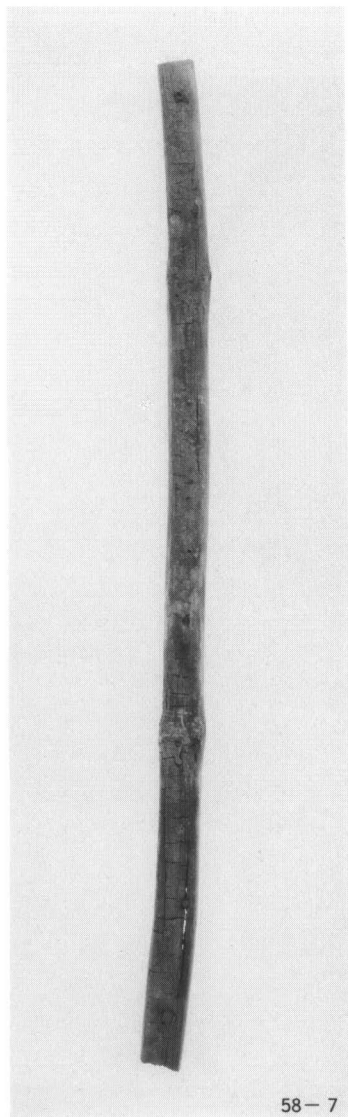
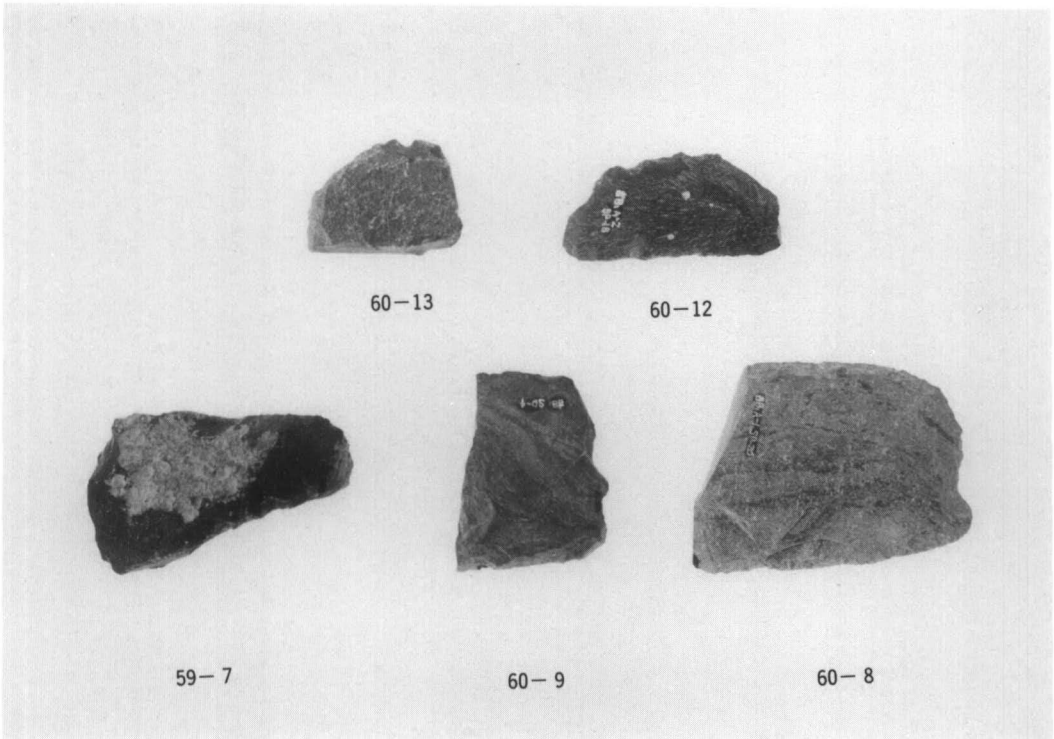
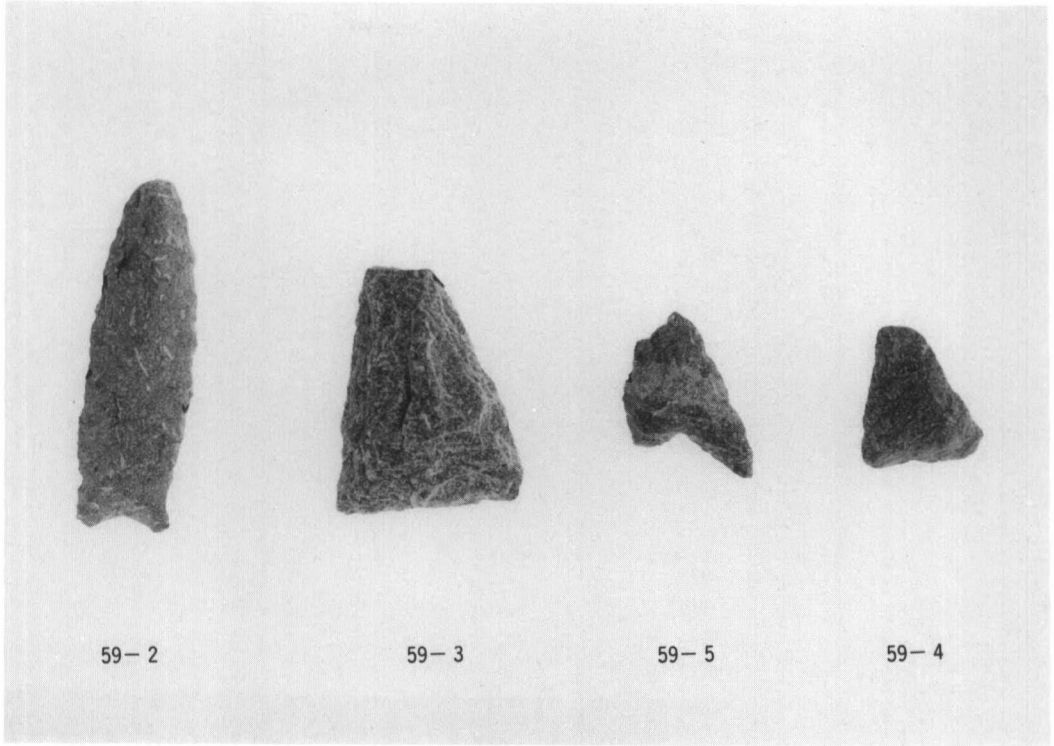


溝・包含層出土土器

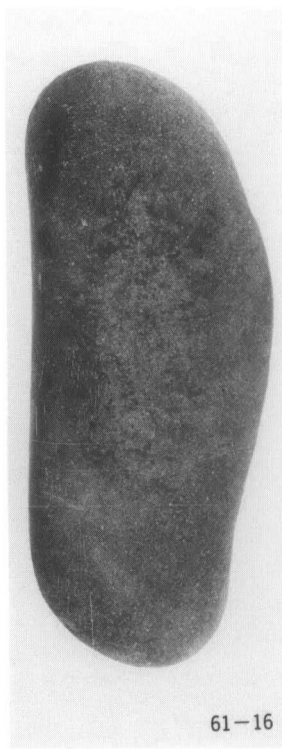
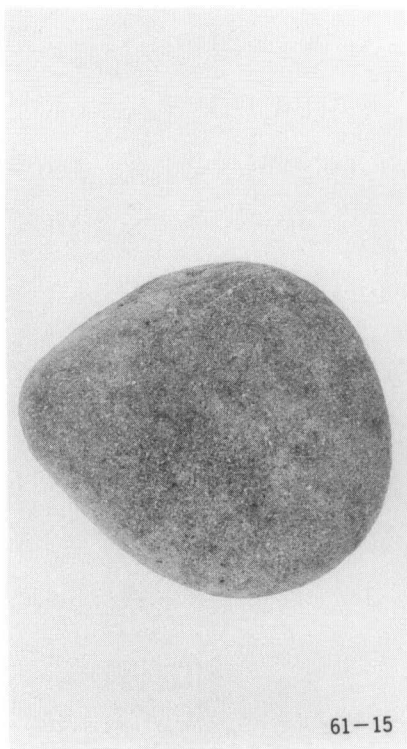
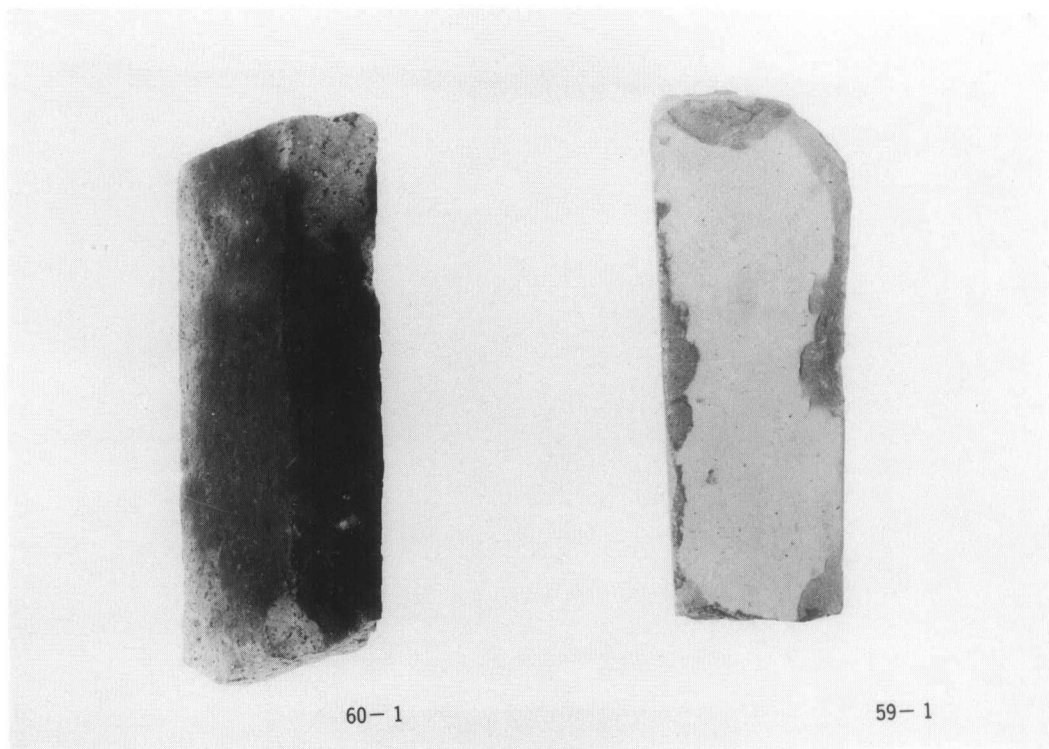


58-14

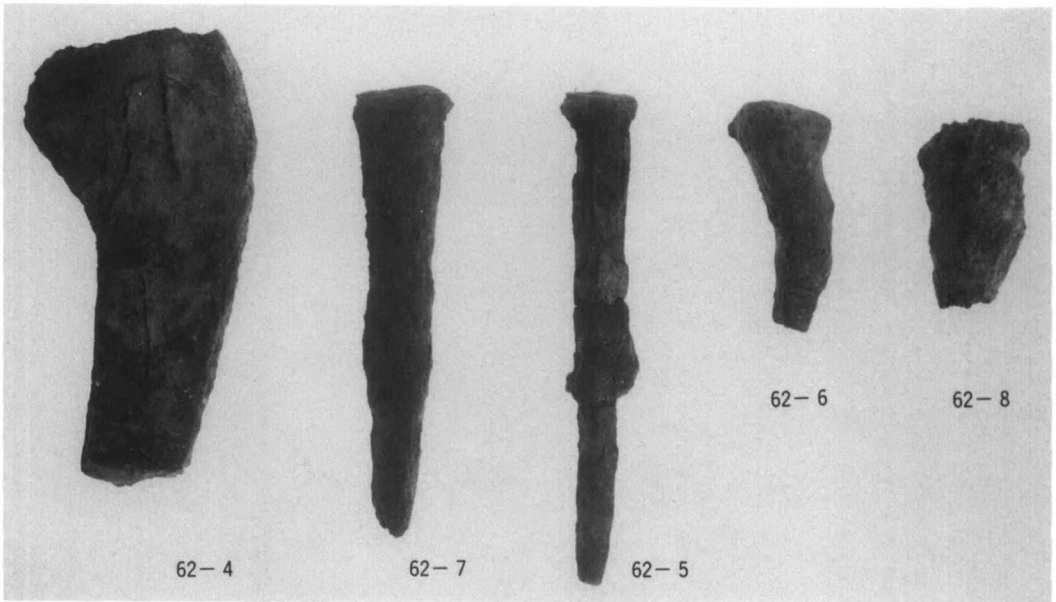
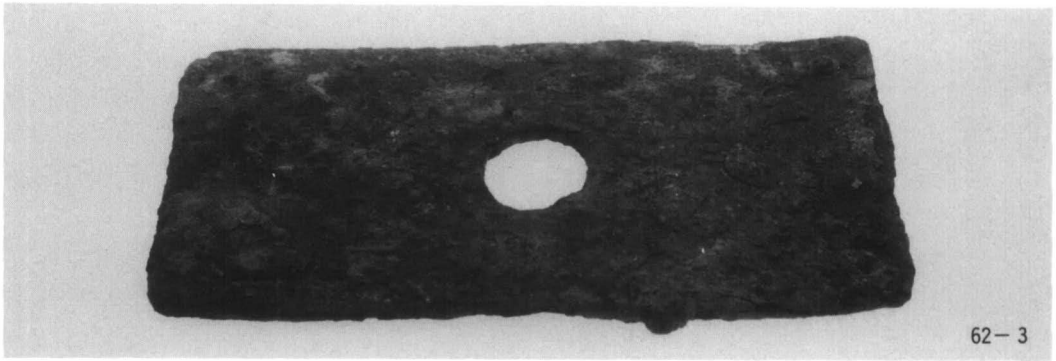
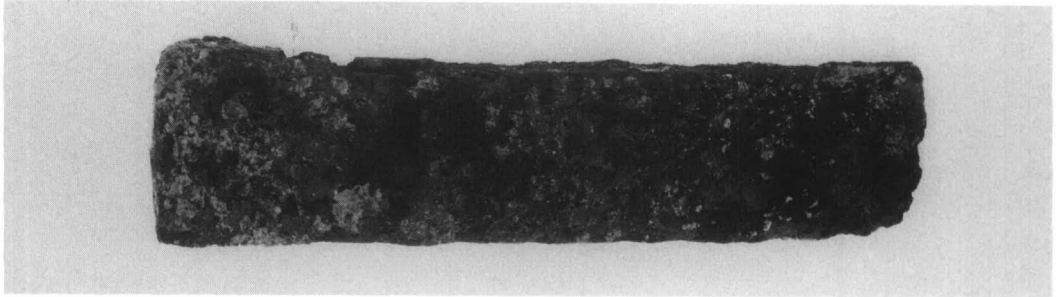
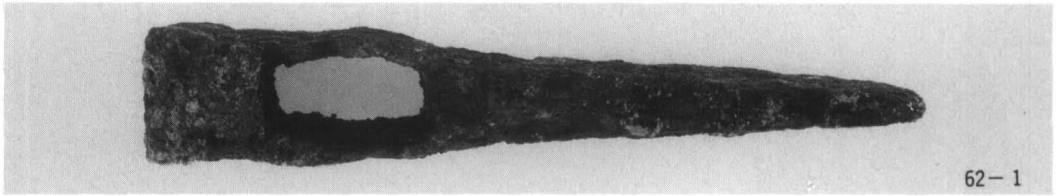


溝・包含層出土石器

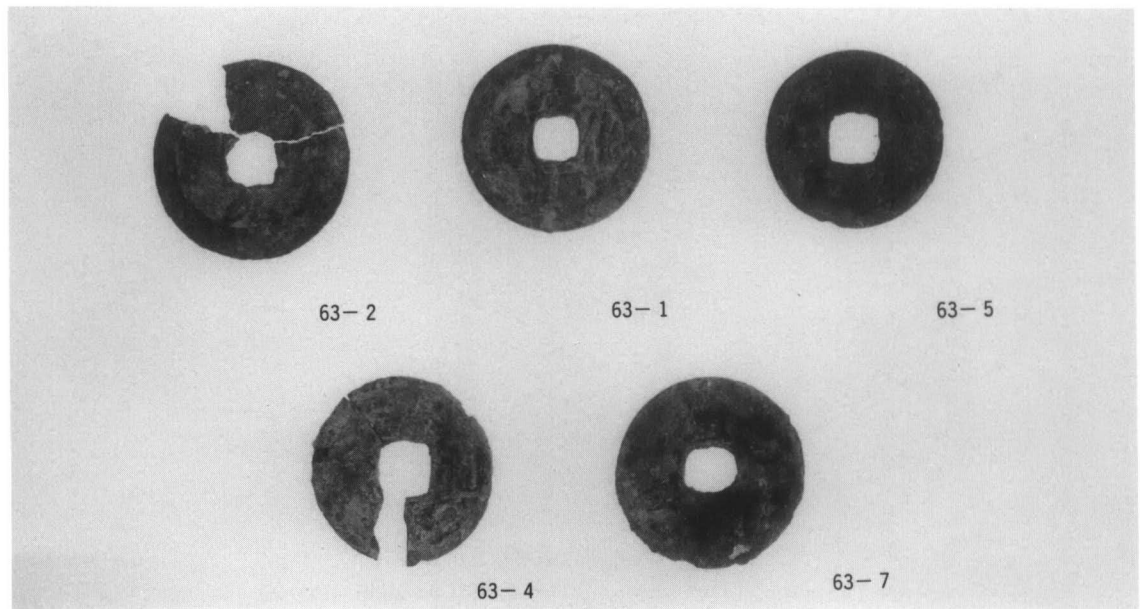
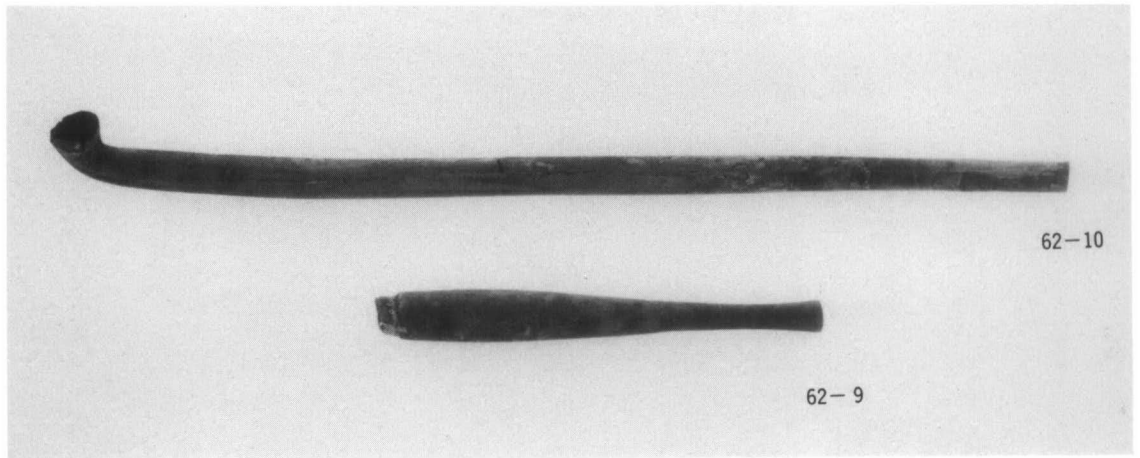
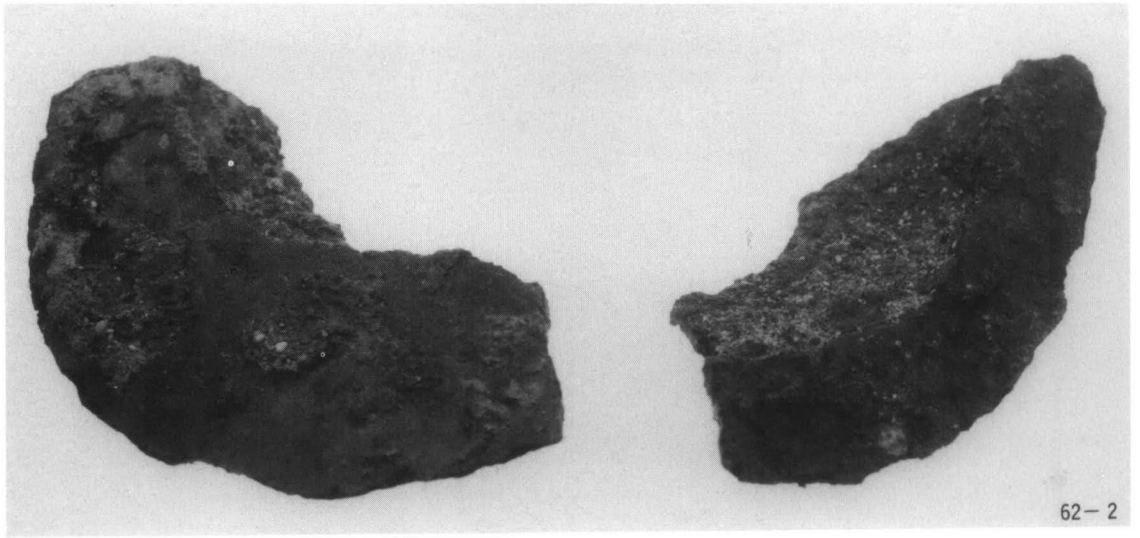




ピット出土石器



井戸・溝・ピット・包含層出土鉄製品



溝・ピット出土鉄製品・キセル・銅銭



四国横断自動車道建設に伴う  
埋蔵文化財発掘調査報告

第一冊

中村遺跡  
乾遺跡  
上一坊遺跡

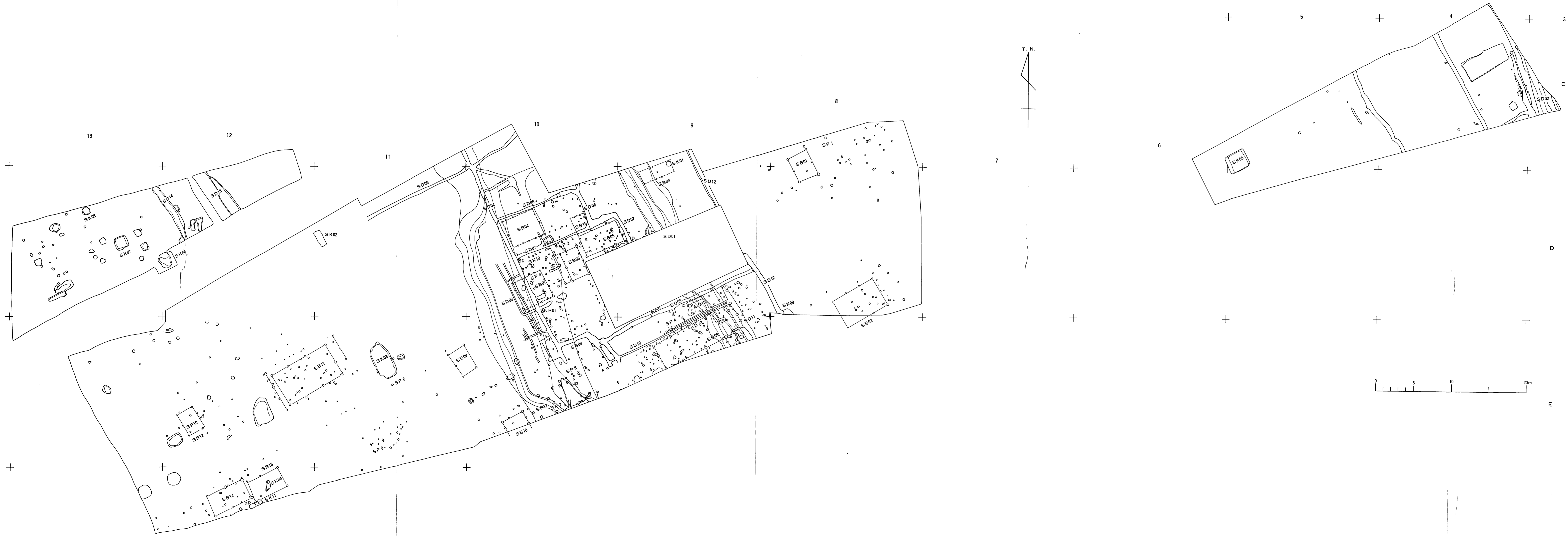
昭和62年3月31日 発行

編集 香川県教育委員会事務局文化行政課  
高松市番町4丁目1番10号  
電話 (0878)31-1111

発行 香川県教育委員会  
日本道路公団

印刷 脩成光社

付図1 中村遺跡遺構配置図





付図 2 上一坊遺跡遺構配置図

