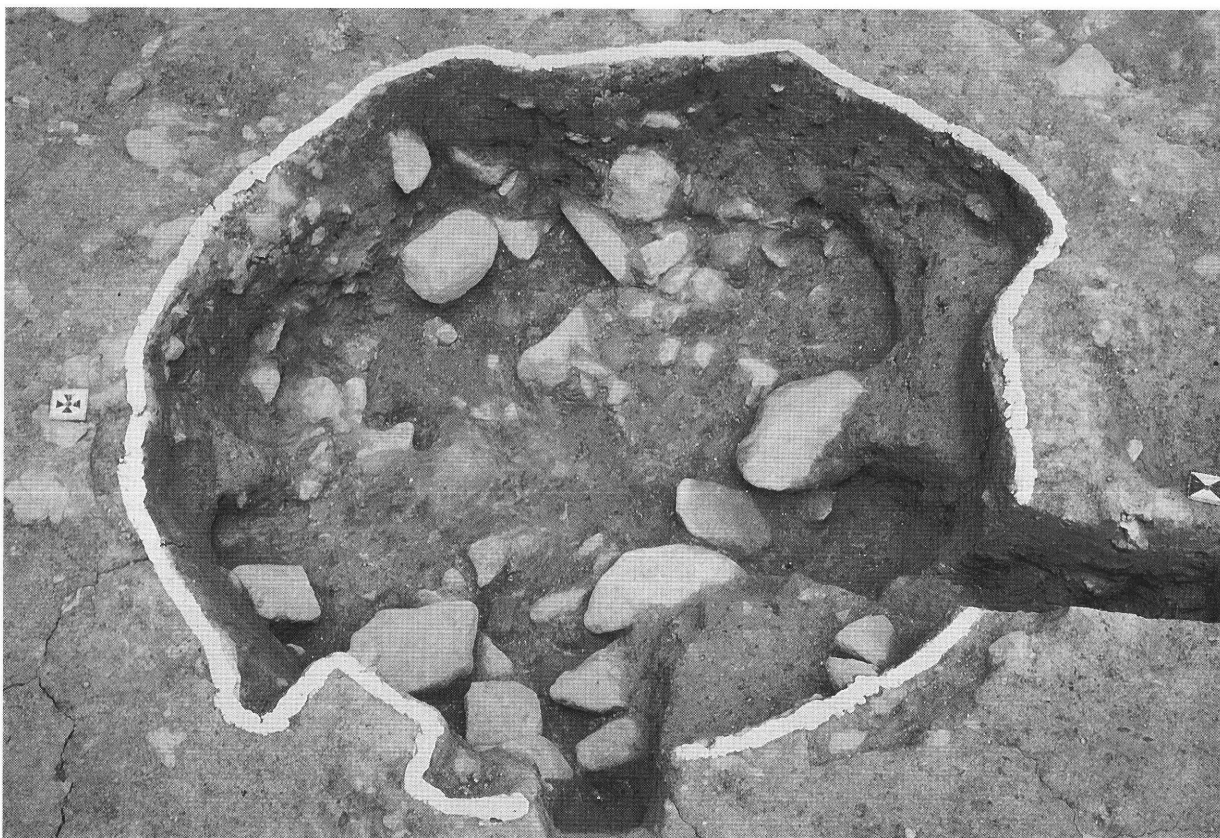




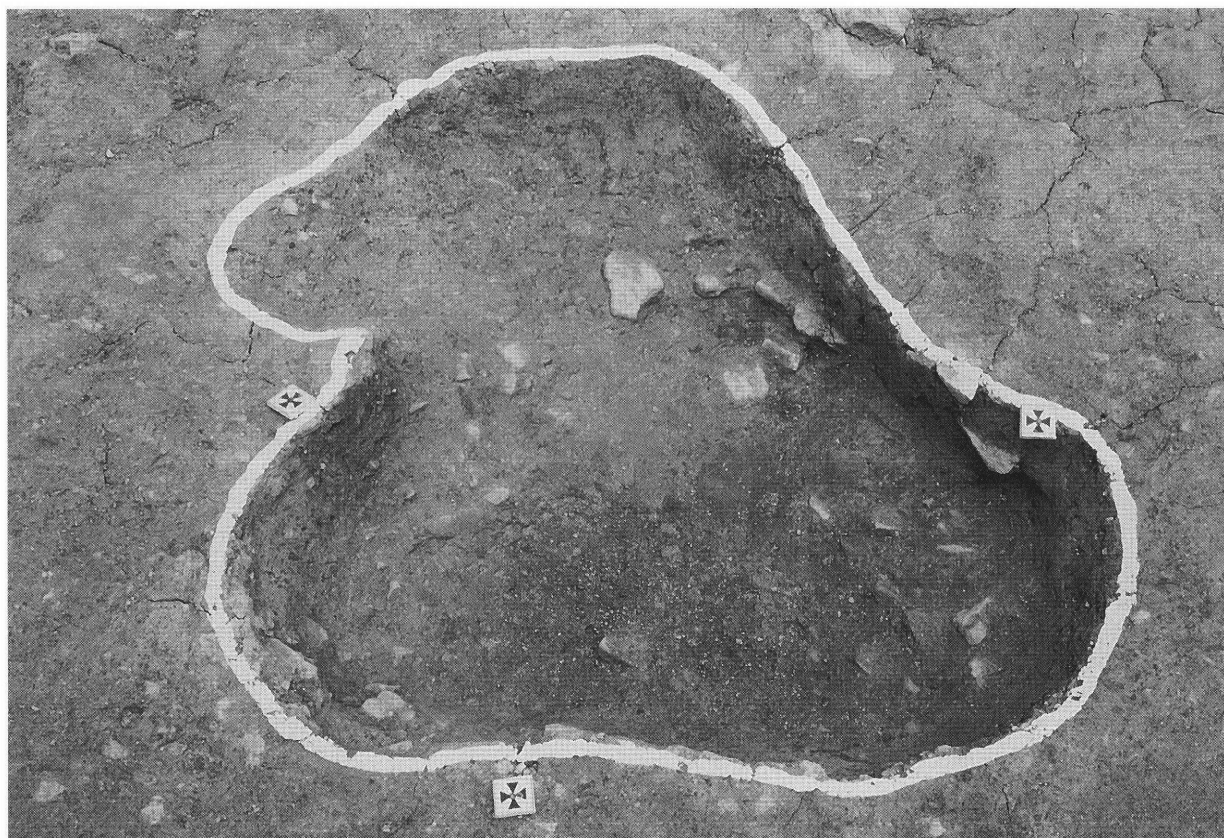
II区SK01土層断面(南から)



II区SK01完掘状況(南から)



Ⅱ区SK02完掘状況(南から)



Ⅱ区SK03完掘状況(南から)



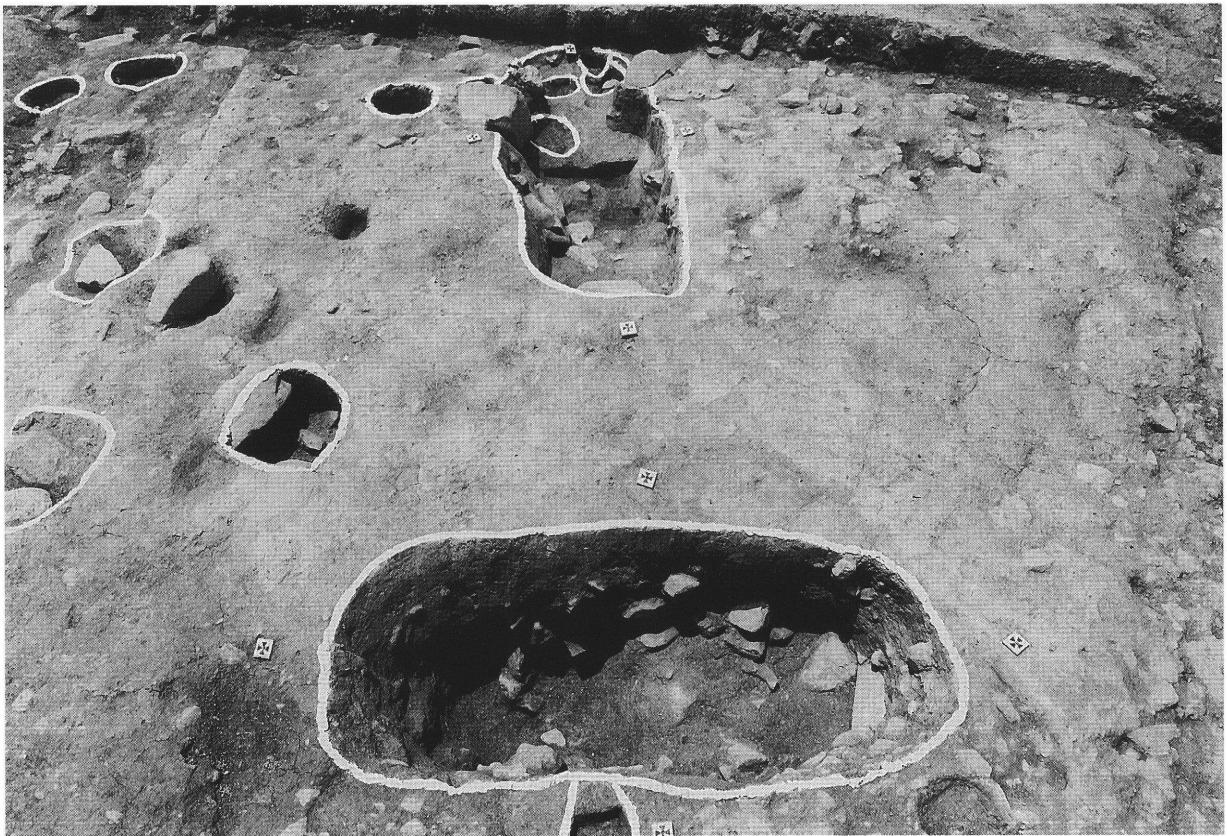
Ⅱ区 S K04下部礫出土状況(北から)



Ⅱ区 S K04下部礫出土状況(南から)



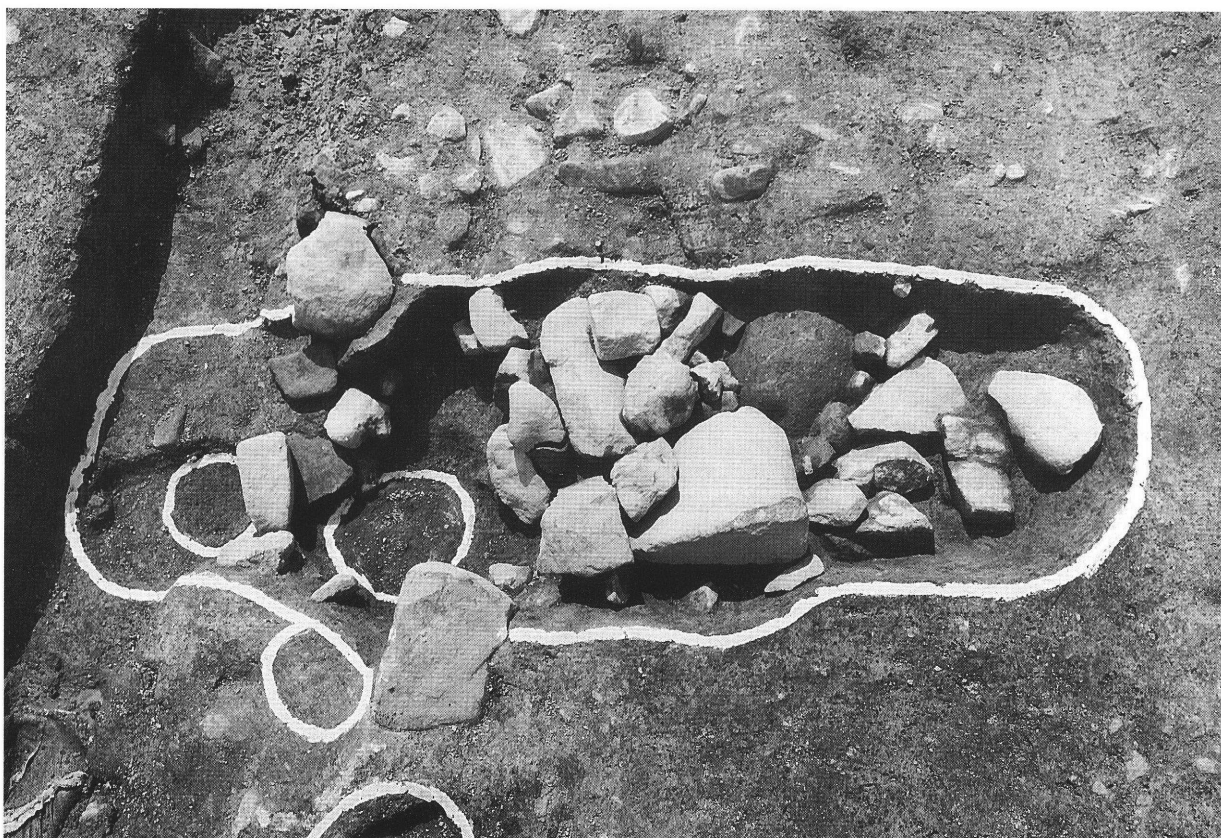
Ⅱ区 S K 04完掘状況(南から)



Ⅱ区 S K 05・S K 06完掘状況(北から)



Ⅱ区 S K05礫出土状況(北から)



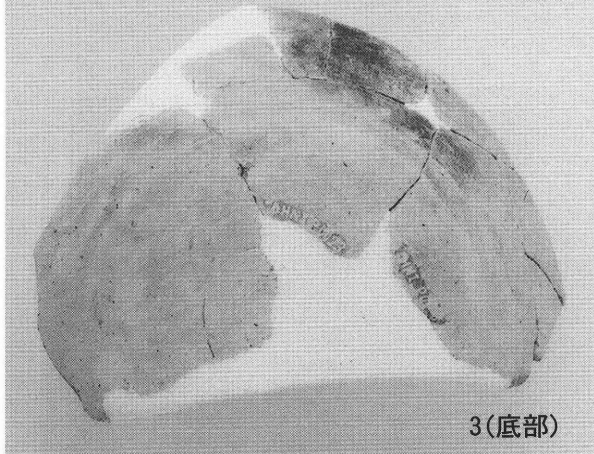
Ⅱ区 S K06礫出土状況(東から)



3



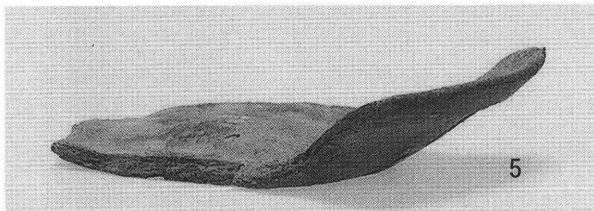
12



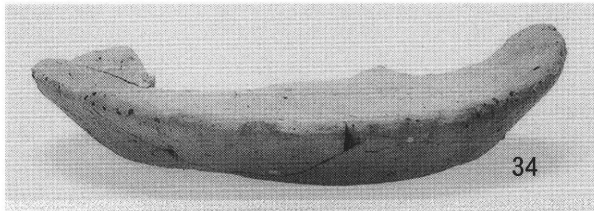
3(底部)



12(底部)



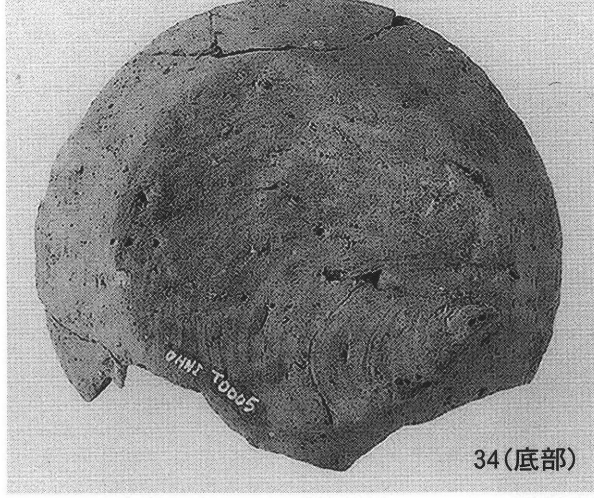
5



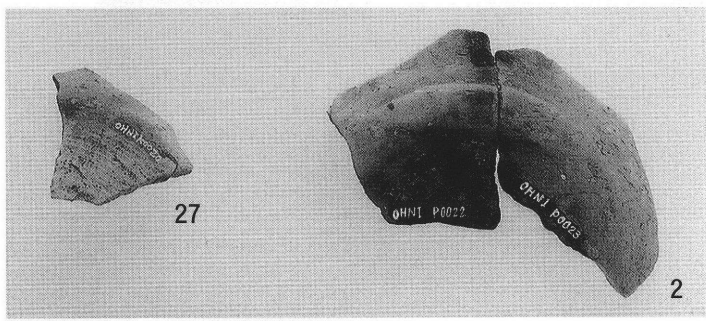
34



5(底部)



34(底部)

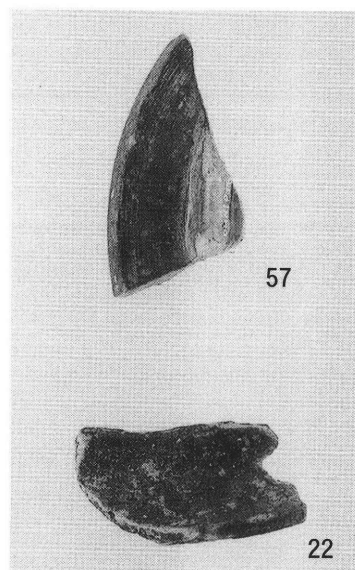
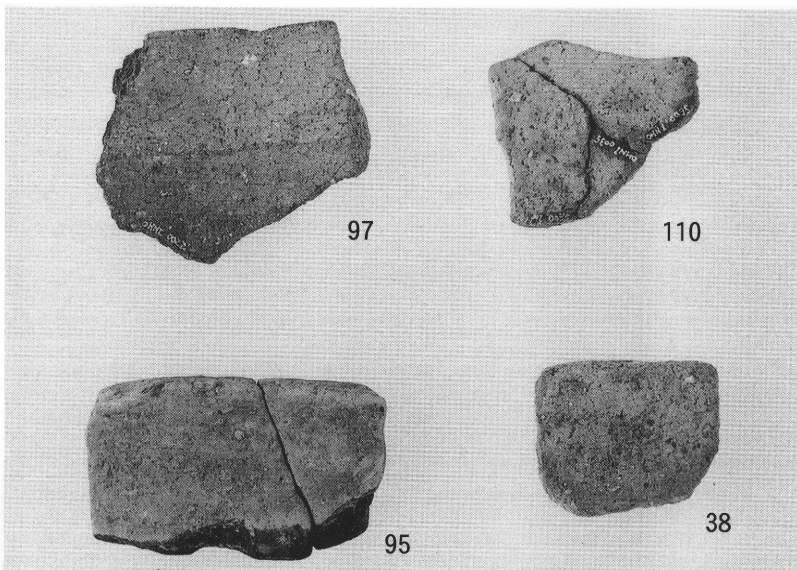
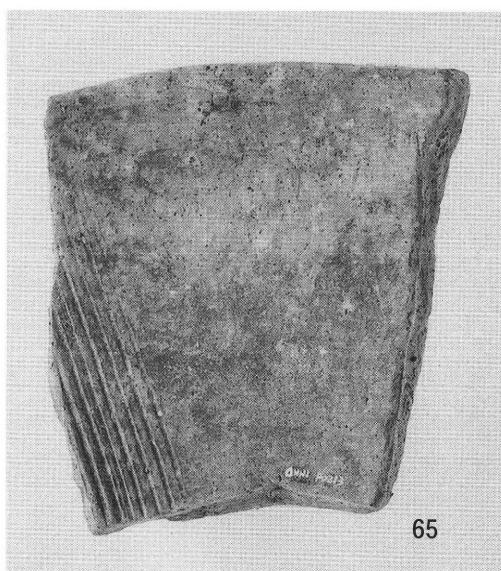
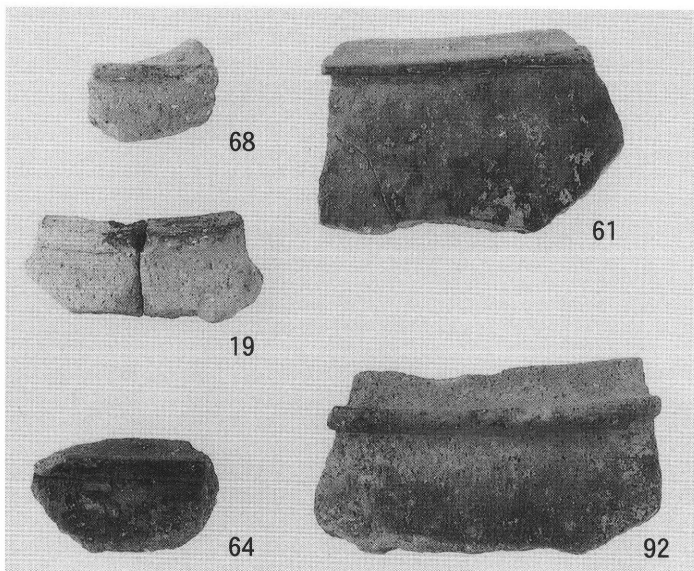


27

2

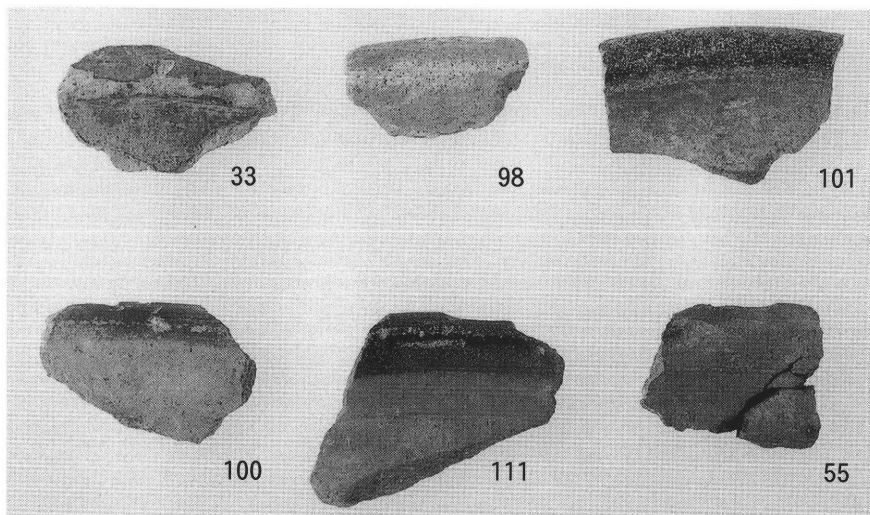
土師器

2・3・12・27 土師器杯 5・34 土師器小皿



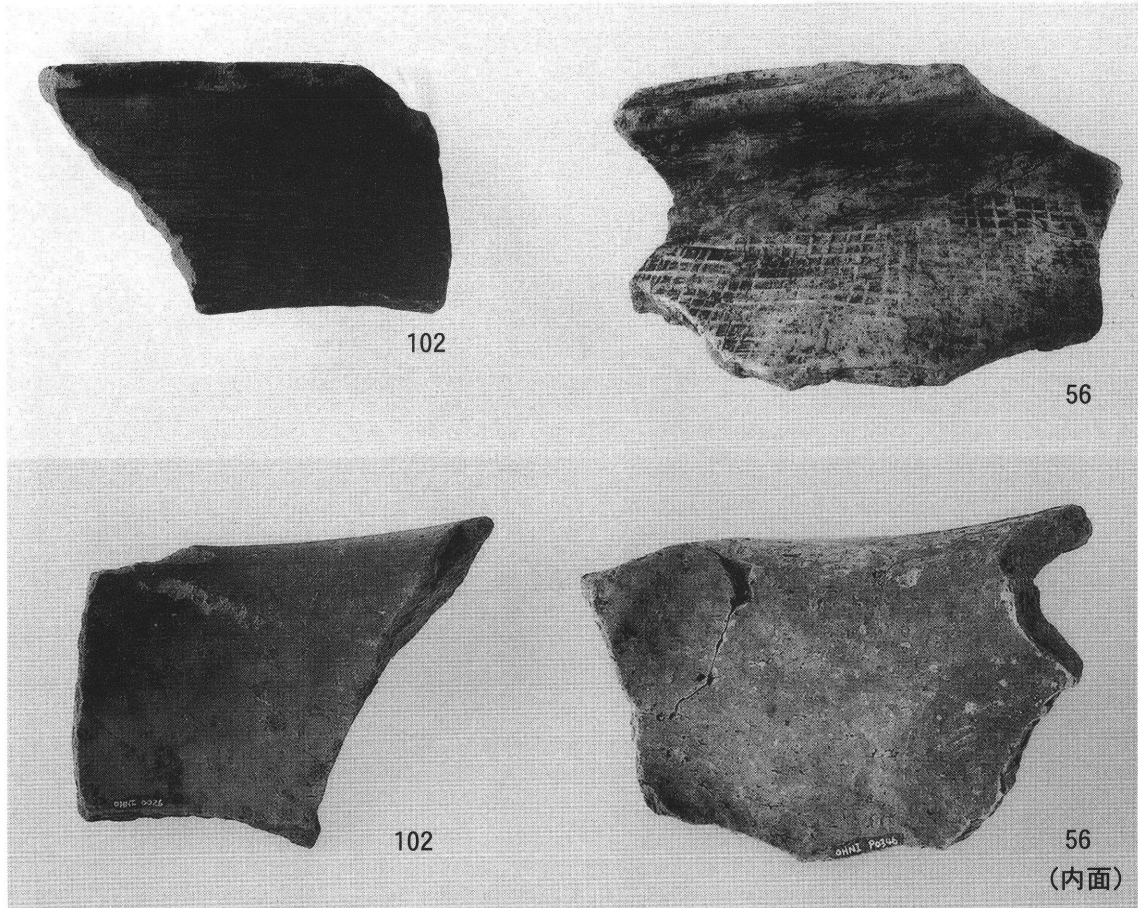
土師質土器

瓦質土器

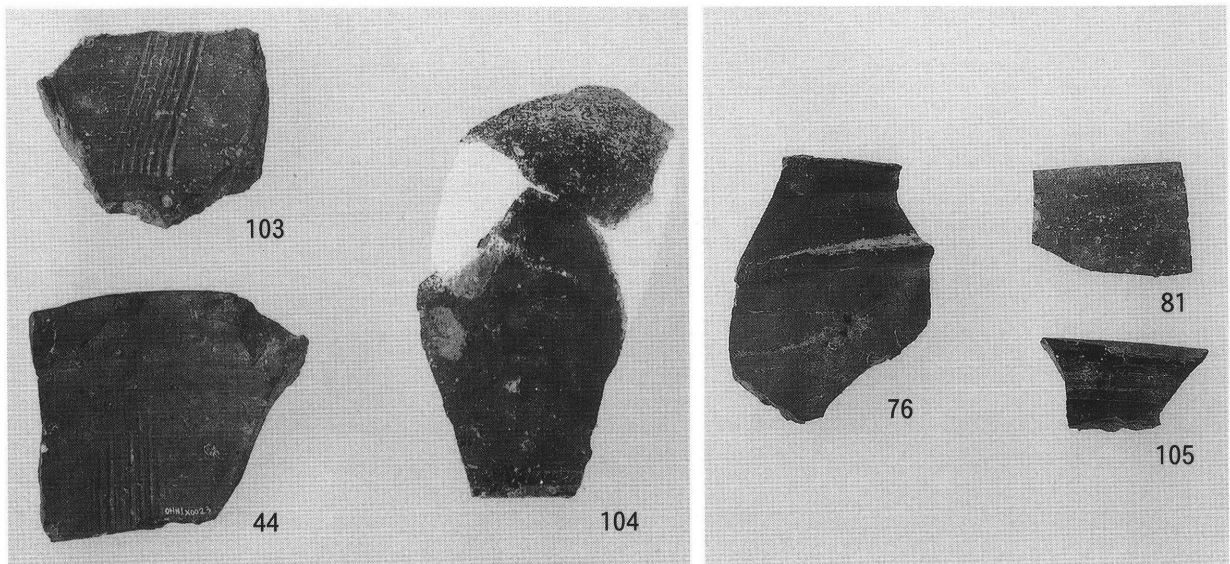


東播系

19・61・64・92 土師質土器土釜 38・95・97・110 土師質土器土鍋 33・55・98・100・101・111 東播系コネ鉢
 65 土師質土器すり鉢 57 瓦質土器蓋? 22 瓦質土器釜 74 東播系須恵器小皿

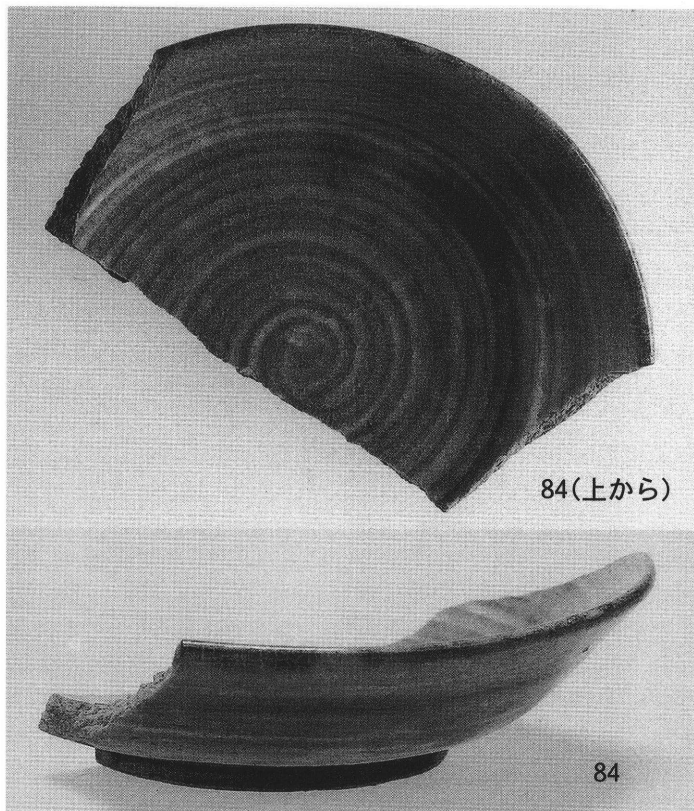


漆焼・亀山焼



備前焼

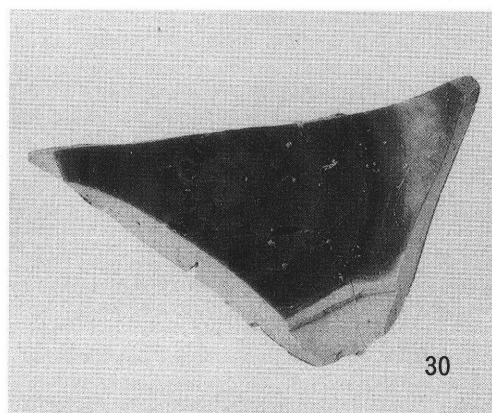
102 漆焼甕 56 亀山焼甕 44・103 備前焼すり鉢 104 備前焼壺 76・81・105 備前焼器種不明



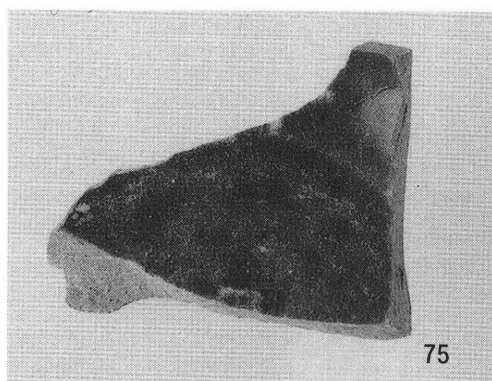
84(上から)

84

瀬戸美濃

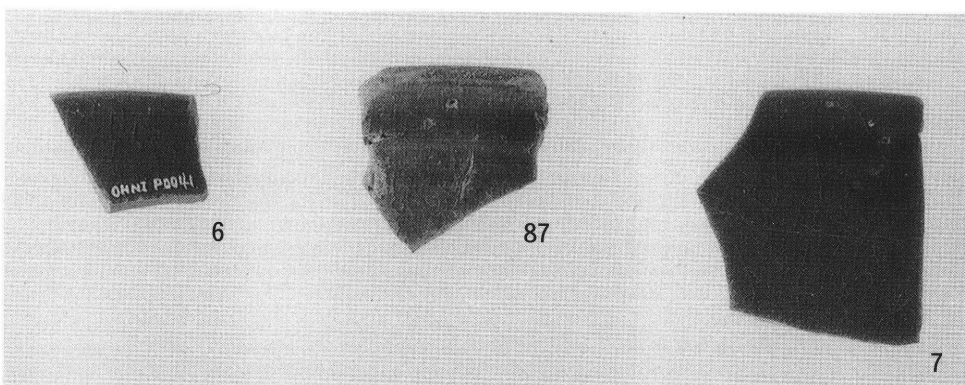


30



75

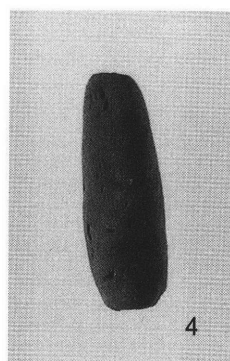
青磁



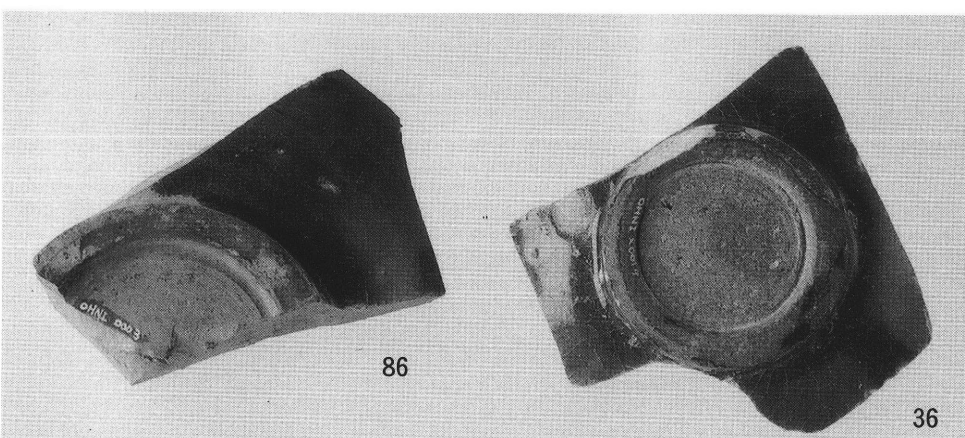
6

87

7



4



86

36

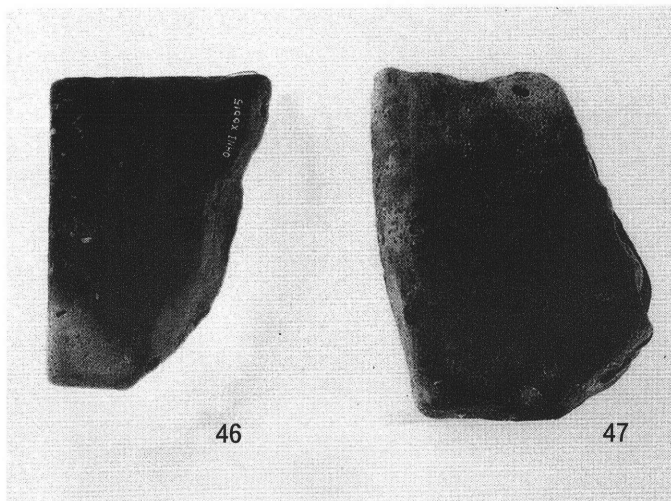
青磁



45

土錘

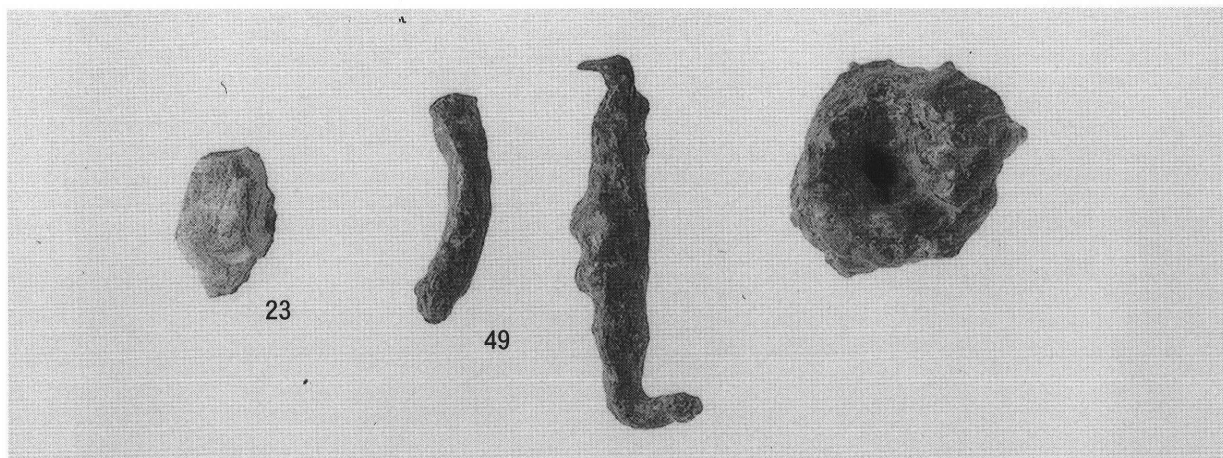
84 瀬戸美濃端反皿 6・7・30・36・75・86・87 青磁碗 4・45 管状土錘



平瓦



軒平瓦



鉄製品

46-47 平瓦 106 軒平瓦 23 石鏃 49 鉄釘 35 鉄刀