

405



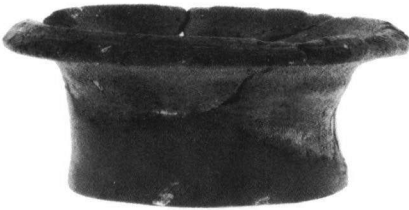
407



408



409



416



434



462



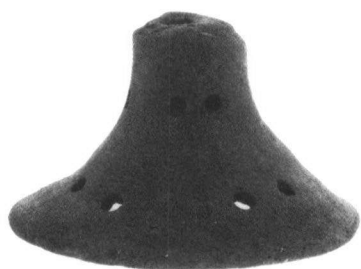
473



490



491



493



494



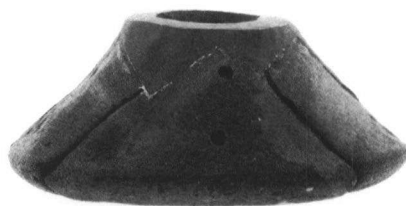
495



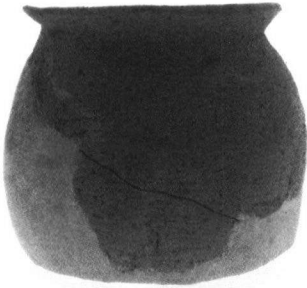
507



508



509



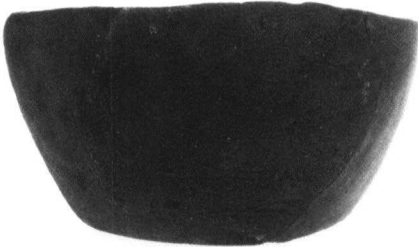
469



511



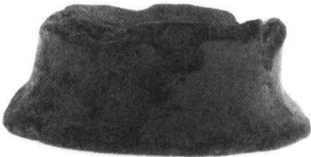
489



504



500



506



485



513  
(表面)



513  
(裏面)



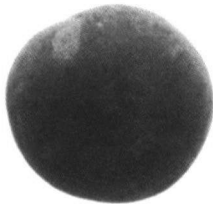
514  
(表面)



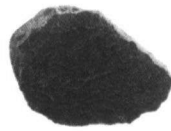
514  
(裏面)



520  
(表面)



520  
(裏面)



515  
(表面)



515  
(裏面)



516  
(表面)



516  
(裏面)



517  
(表面)



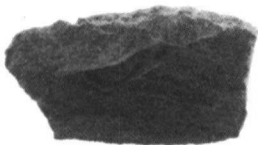
517  
(裏面)



518  
(表面)



519  
(表面)



518  
(裏面)



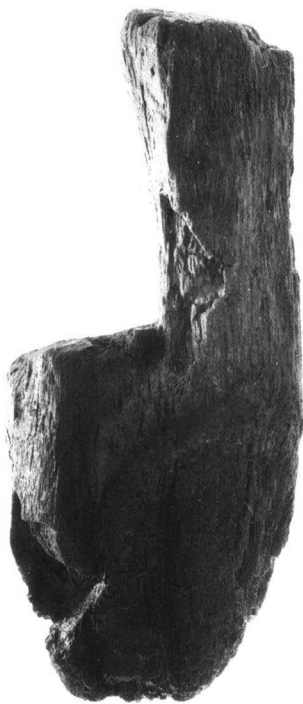
519  
(裏面)



521 (表面)



521 (裏面)



522 (側面)

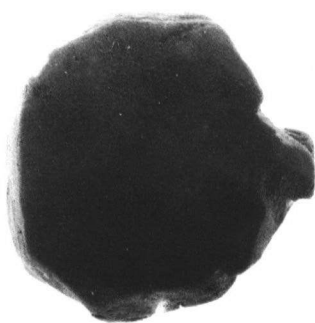


522 (正面)

SR04出土遺物 (5)



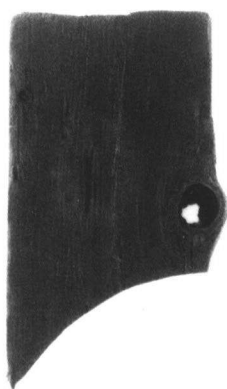
523 (側面)



523 (正面)



524



525



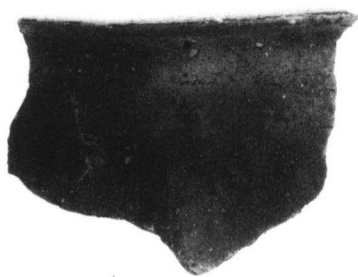
526



527



536



529



546



548 (表面)



548 (裏面)



547 (表面)



547 (裏面)

包含層出土弥生時代遺物 (1)



549 (表面)



549 (裏面)



550 (表面)



550 (裏面)



551 (表面)



551 (裏面)



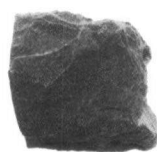
552 (表面)



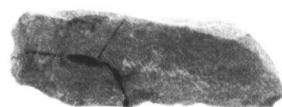
552 (裏面)



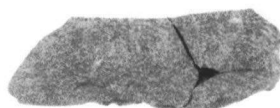
553 (表面)



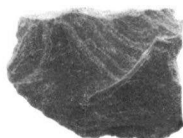
553 (裏面)



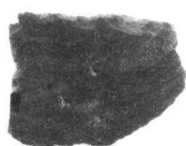
554 (表面)



554 (裏面)



555 (表面)



555 (裏面)



556 (表面)



556 (裏面)

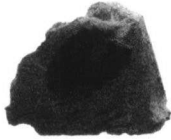




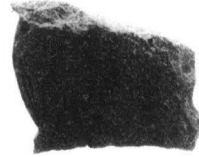
557  
(表面)



558  
(表面)



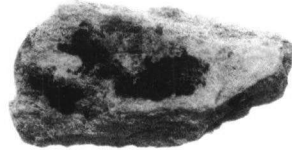
557  
(裏面)



558  
(裏面)



559  
(表面)



560  
(表面)



559  
(裏面)



560  
(裏面)



561  
(表面)



562  
(表面)



562  
(裏面)



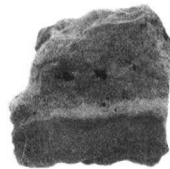
561  
(裏面)



563  
(表面)



563  
(裏面)



564  
(表面)



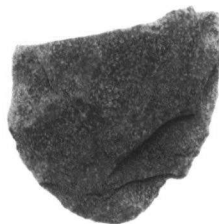
564  
(裏面)



565  
(表面)



565  
(裏面)



566  
(表面)



566  
(裏面)



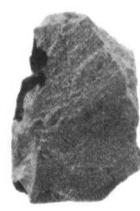
567  
(表面)



567  
(裏面)



568  
(表面)



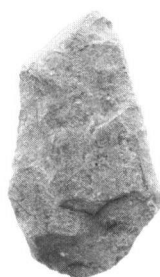
568  
(裏面)



569  
(表面)



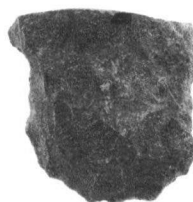
569  
(裏面)



570  
(表面)



570  
(裏面)



571  
(表面)



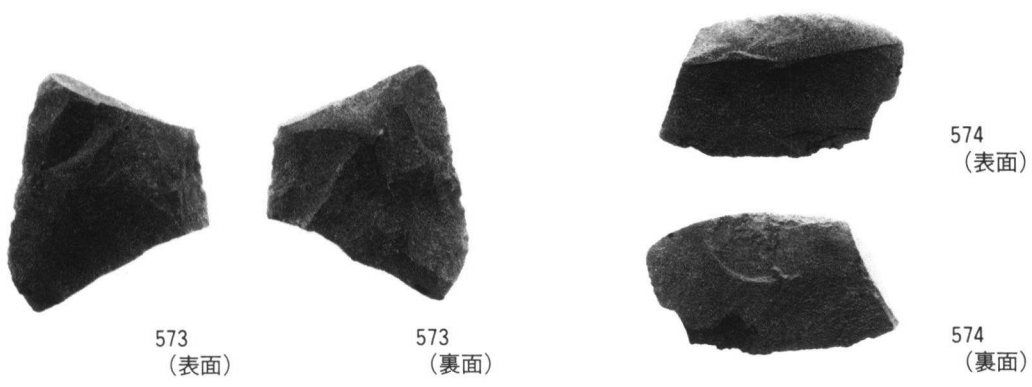
571  
(裏面)



572  
(表面)



572  
(裏面)



573  
(表面)

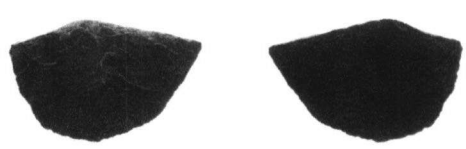
573  
(裏面)

574  
(表面)

574  
(裏面)



575  
(表面)



576  
(表面)

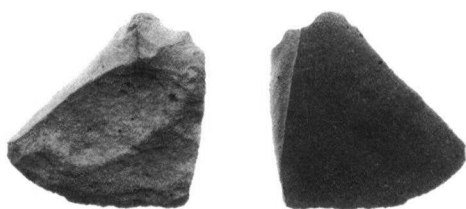
576  
(裏面)



575  
(裏面)

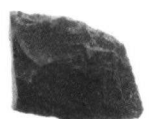


577  
(表面)



578  
(表面)

578  
(裏面)



577  
(裏面)



579  
(表面)

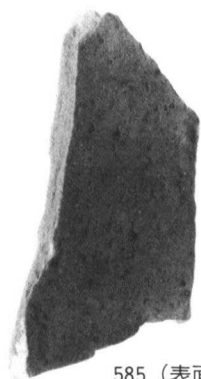


580  
(表面)

580  
(裏面)



579  
(裏面)



585 (表面)



585 (裏面)



582



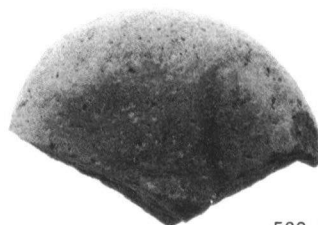
(左)



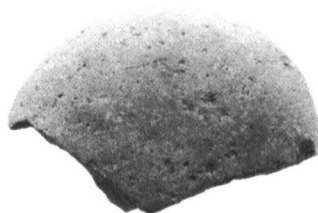
581 (正面)



(右)



583 (表面)



583 (裏面)

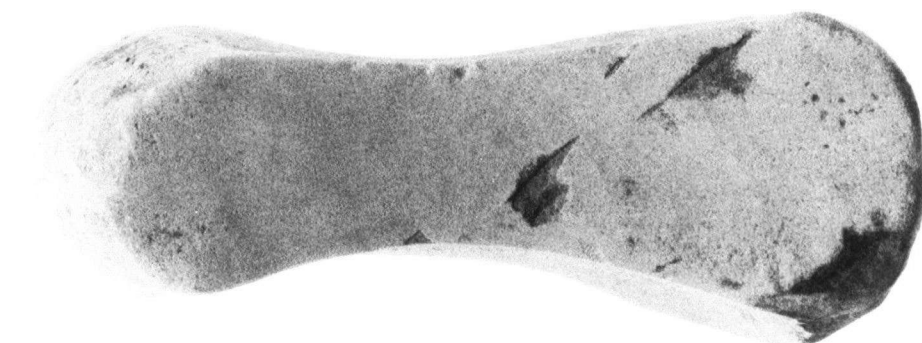


586 (表面)



586 (裏面)

包含層出土弥生時代遺物 (6)



(右)

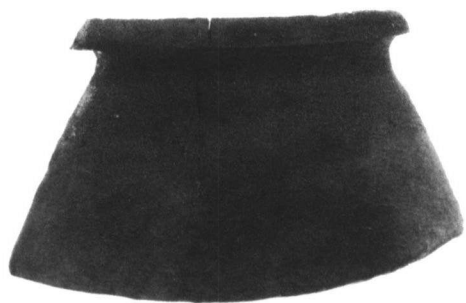


584 (正面)

包含層出土弥生時代遺物 (7)



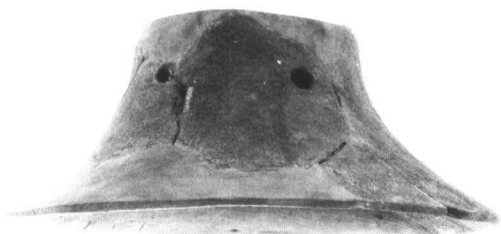
(左)



618



648



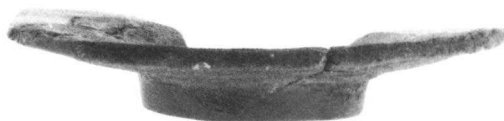
656



658



662



695



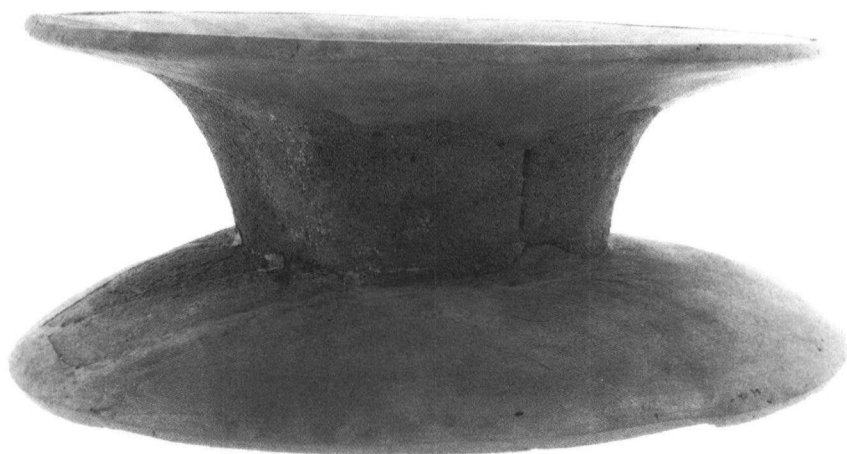
701



709



730



732



733



671 (表面)



671 (裏面)



672 (表面)



672 (裏面)



673 (表面)



673 (裏面)



676 (表面)



676 (裏面)



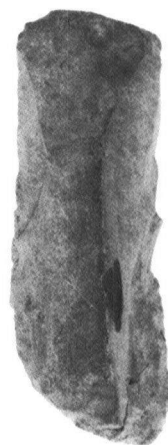
677 (表面)



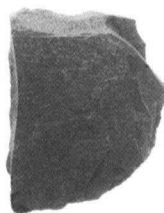
677 (裏面)



674 (表面)



674 (裏面)



678 (表面)



678 (裏面)

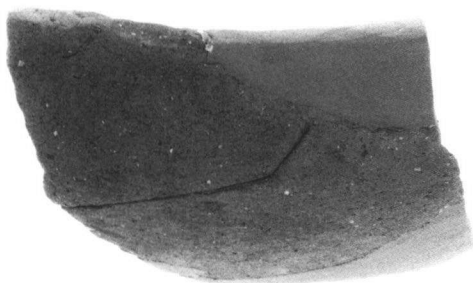




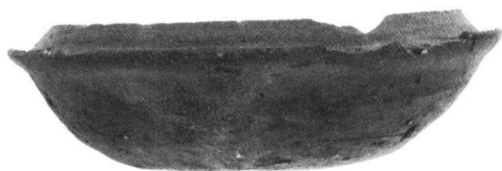
734



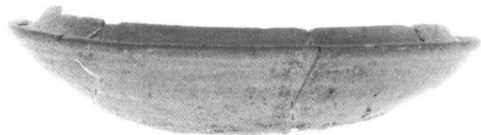
721



720



739



738



735



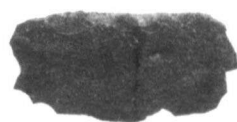
736



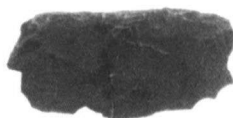
679 (表面)



679 (裏面)



680 (表面)



680 (裏面)



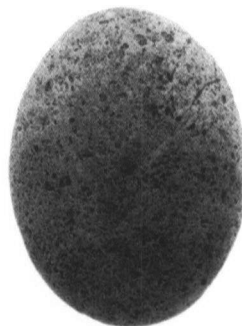
681 (表面)



681 (裏面)



686 (表面)



686 (裏面)



682 (表面)



682 (裏面)



683 (表面)



683 (裏面)



684 (表面)



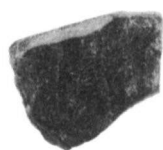
684 (裏面)



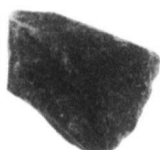
685 (表面)



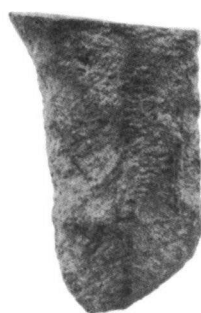
685 (裏面)



722 (表面)



722 (裏面)



723 (表面)



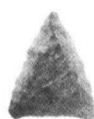
723 (裏面)



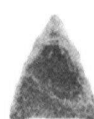
726 (表面)



726 (裏面)



727 (表面)



727 (裏面)



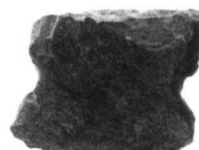
725 (表面)



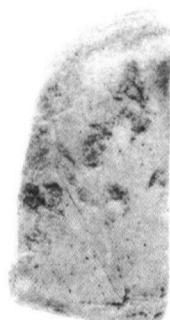
728 (表面)



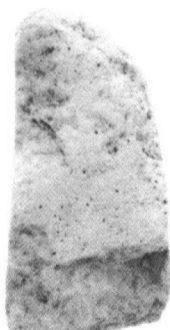
725 (裏面)



728 (裏面)



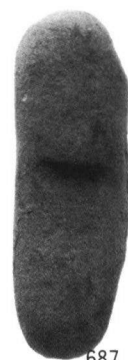
690 (表面)



690 (裏面)



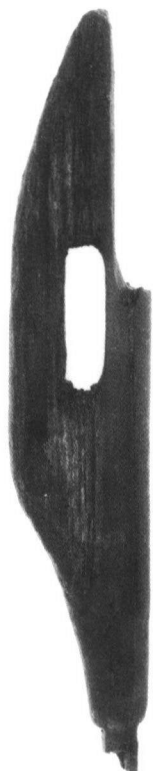
687 (表面)



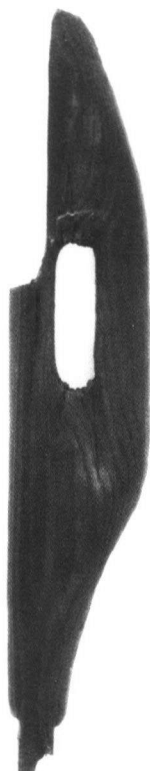
687 (裏面)



693



741 (表面)



741 (裏面)



742 (表面)



742 (裏面)

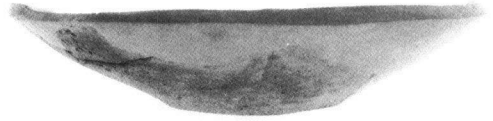


694

SX02出土遺物 (7)



747



748



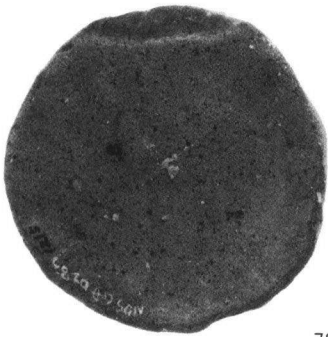
754 (表面)



754 (裏面)



758



787 (外面)



787 (内面)



788



792



794



796



797 (表面)



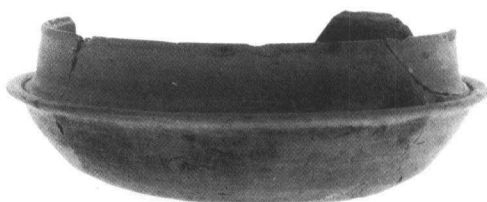
797 (裏面)



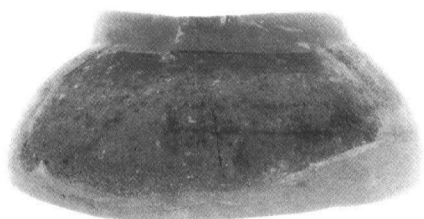
804



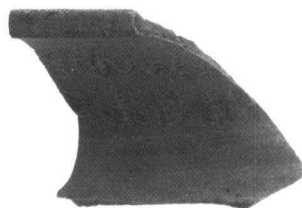
809



813



819



820



816

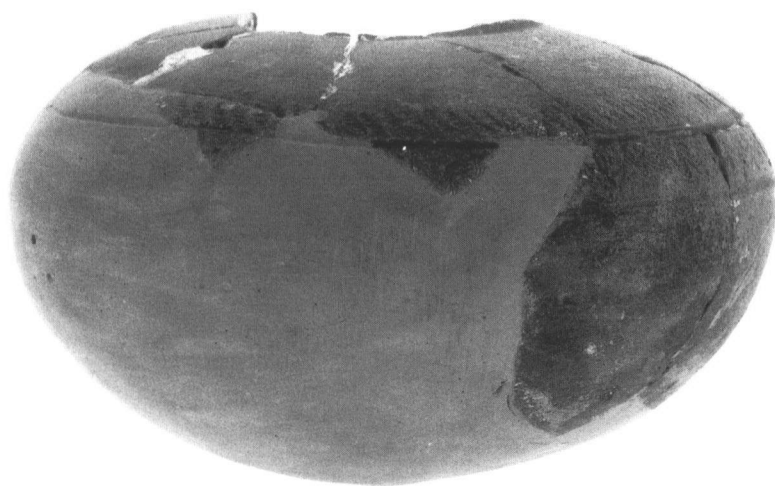


818

SD14出土遺物（3）



817



821

SD14出土遺物（4）





822 (正面)



822 (側面)

SD14出土遺物 (5)



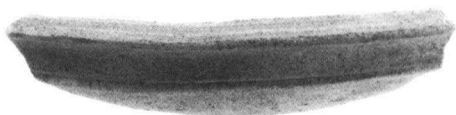
834



846



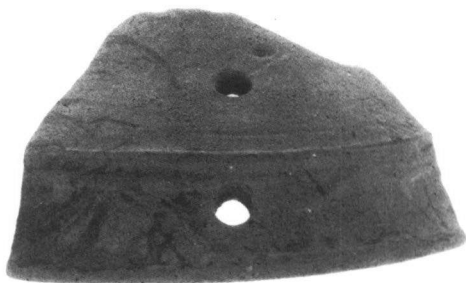
850



855



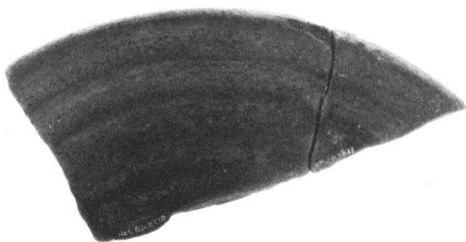
864



867



868 (外面)



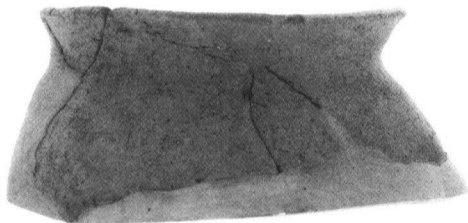
868 (内面)



869



870



877 (表面) 877 (裏面)



878

872



875



876

SD15出土遺物 (2)



887



889



892



893



900



907



905



906



914

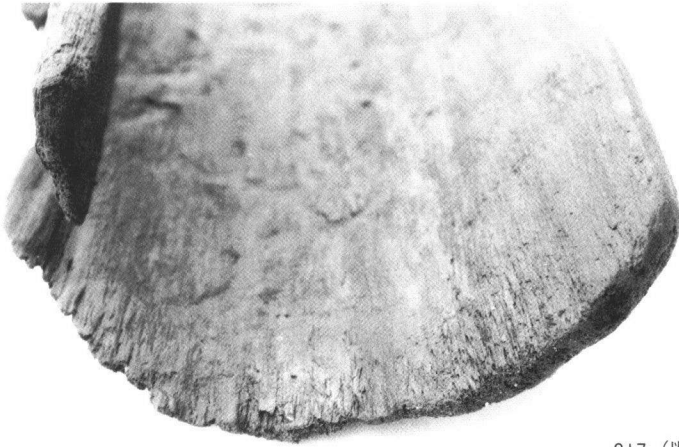
SD17出土遺物 (2)



916 (表面)

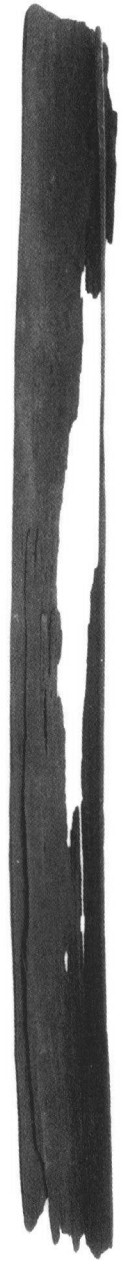


916 (裏面)

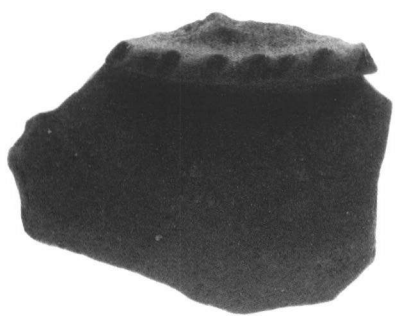


917 (断面)

SD18出土遺物



917



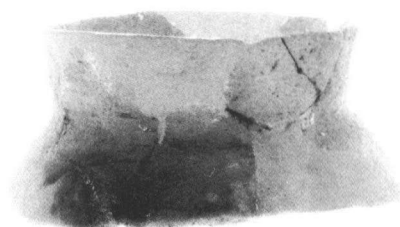
927



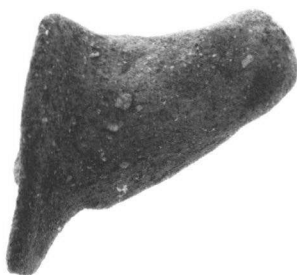
928



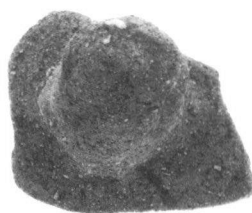
929



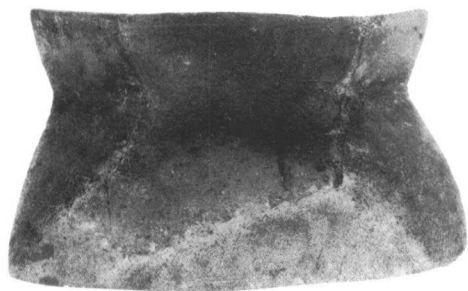
954



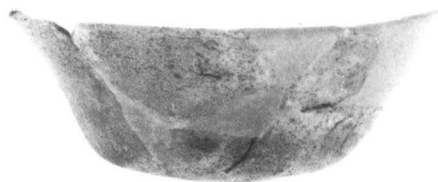
962 (侧面)



962 (正面)



931



956



947



948



958



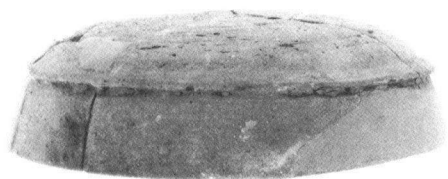
959



960



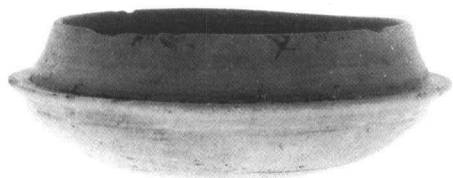
961



963



964



965



966

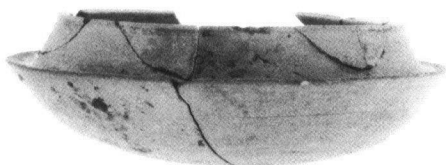




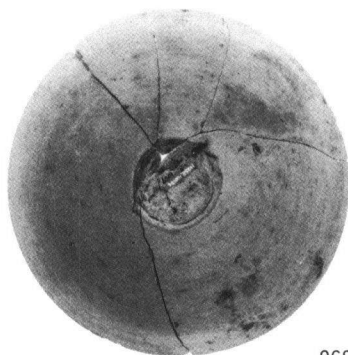
967



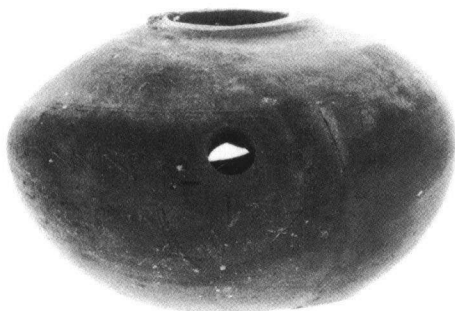
971



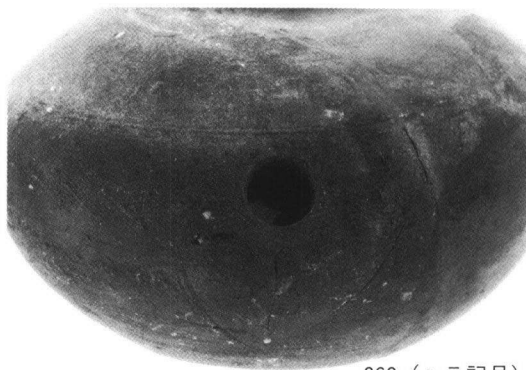
968 (表面)



968 (裏面)



969



969 (へら記号)



970



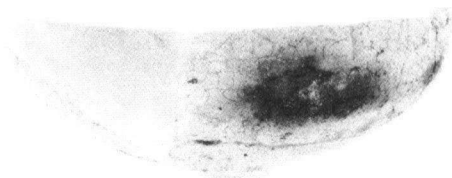
973



972



977



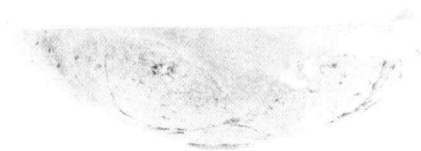
979



981 (表面)



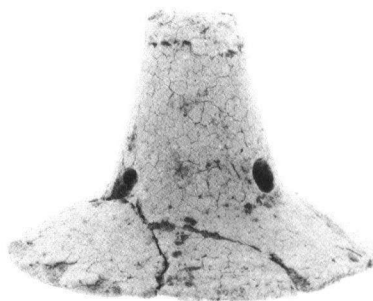
981 (裏面)



988



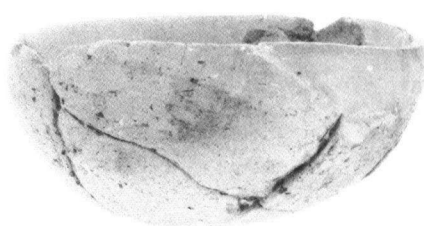
989



992



993

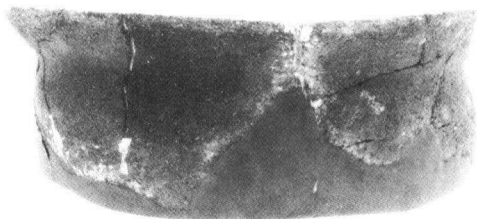


994

SH03出土遺物 (977・979・981) SH04出土遺物



999



1000



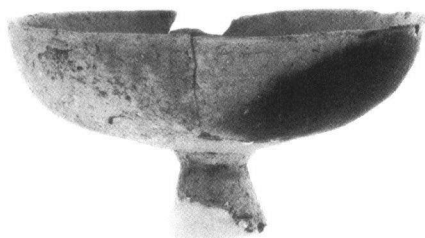
1002



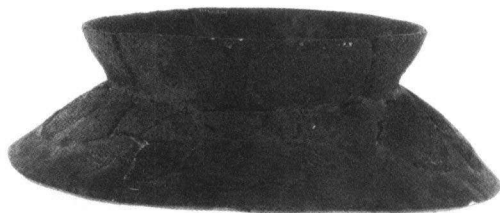
1005



1004



1011



1006



1013



1014 (表面)

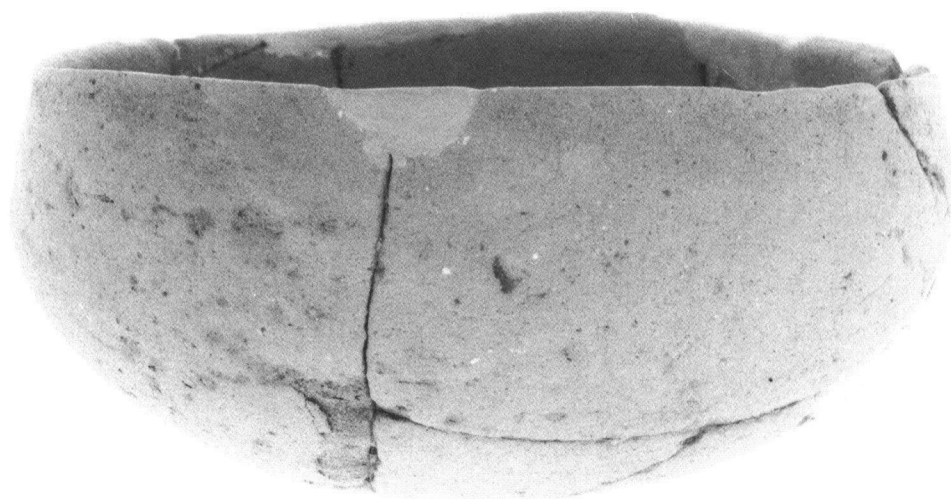


1014 (裏面)

SH04出土遺物 (999・1000) SH05出土遺物 (1002・1004・1005)  
SH06出土遺物 (1011・1006・1013・1014)



SB12出土柱材



1028



1031 (表面)

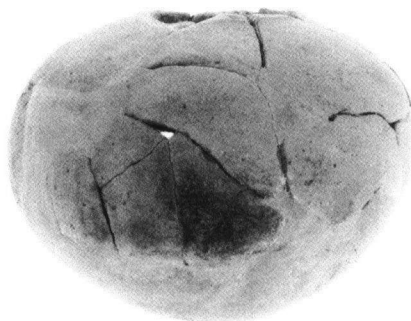


1031 (裏面)

SD21出土遺物



1042



1043



1044



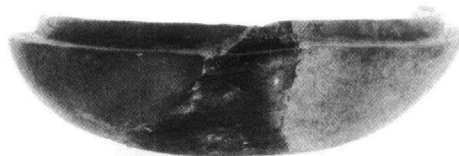
1045 (表面)



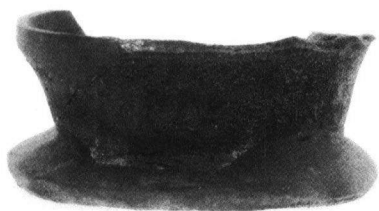
1045 (裏面)



1053



1062



1076



1068 (表面)



1068 (横正面)



1068 (裏面)



1070

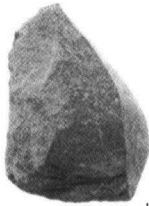


1074

包含層出土古墳時代遺物（2）



1090  
SD34出土遺物



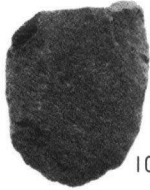
1096



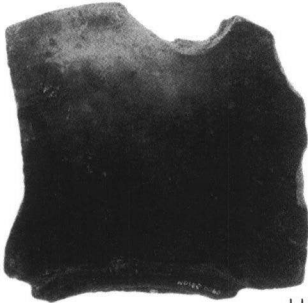
1095  
(表面)



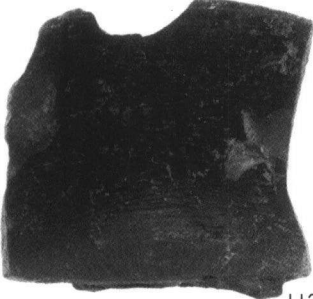
1096



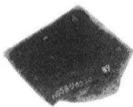
1095  
(裏面)



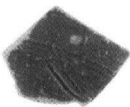
1125 (外面)



1125 (内面)



1126 (外面)



1126 (内面)

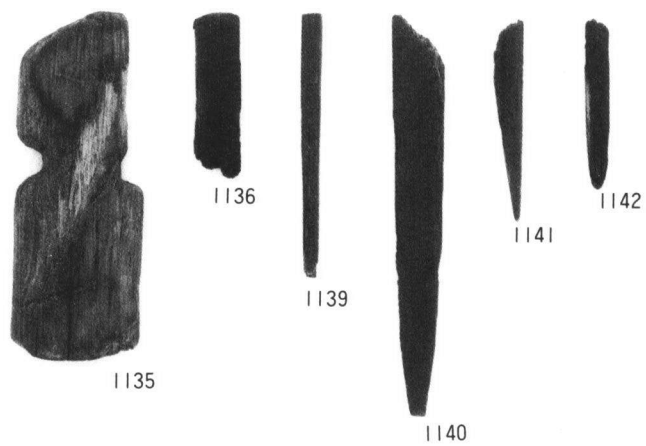
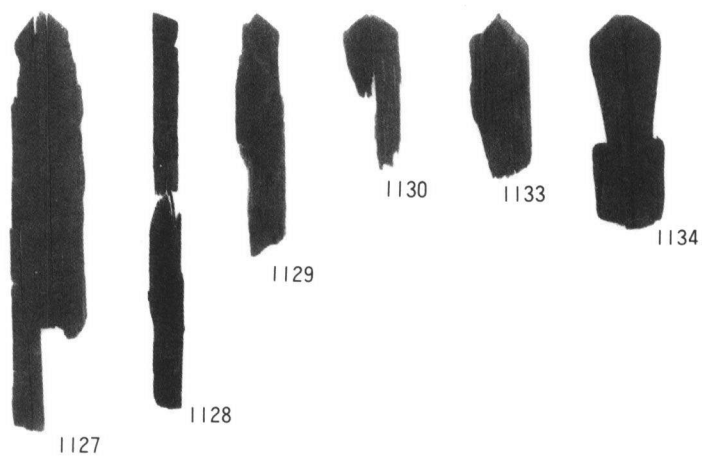


1137



1138

SR05出土遺物 (1)



SR05出土遺物(2)





1131



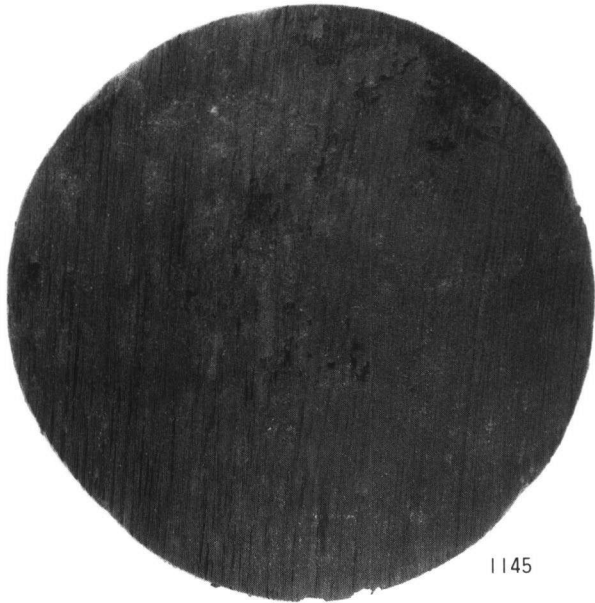
1132



1143



1144



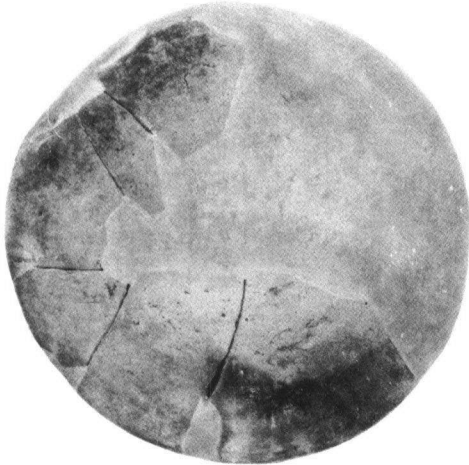
1145



1169

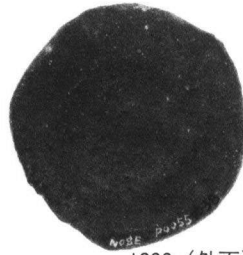


1170

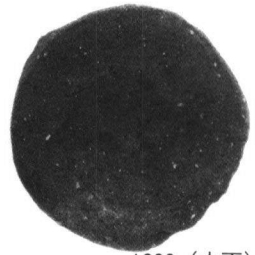


1169

包含層出土古代遺物



1200 (外面)



1200 (内面)

SP03出土遺物 (1200)



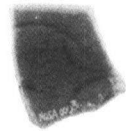
1216 (外面)



1216 (内面)



1217 (外面)



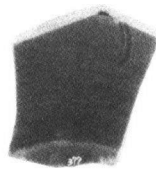
1217 (内面)



1218 (外面)



1218 (内面)



1219 (外面)



1219 (内面)

包含層出土中世遺物

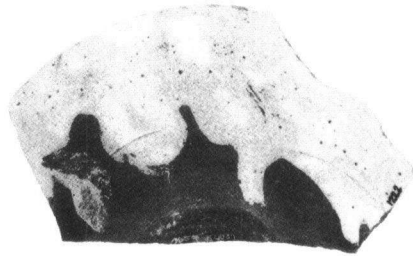


1221 (外面)



1221 (内面)

SK32出土遺物

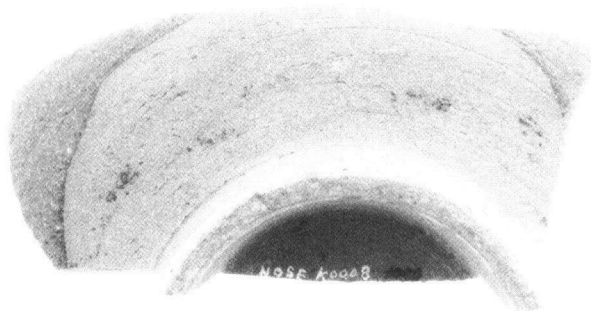


1225 (外面)

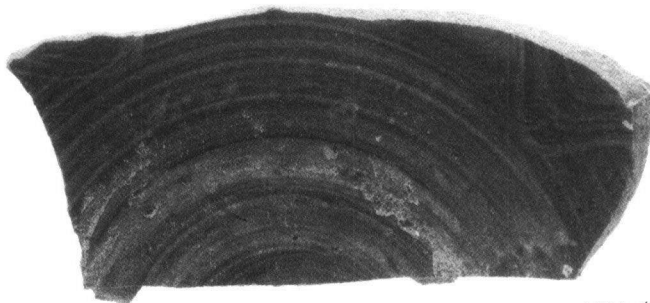


1225 (内面)

SK34出土遺物



1224 (外面)



1224 (内面)

SK33出土遺物



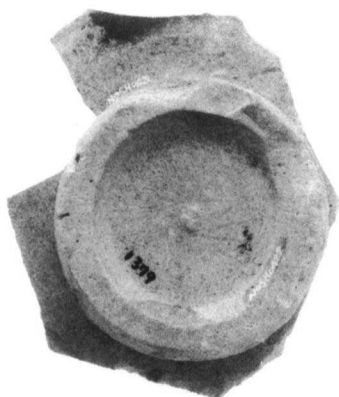
SK31出土遺物

1222

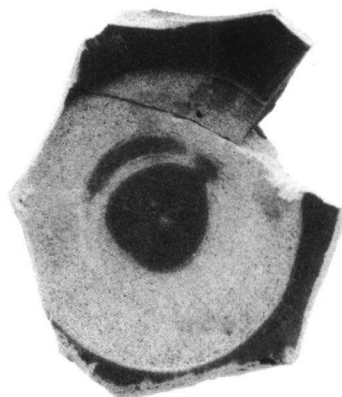


包含層出土近世遺物（1）

1231



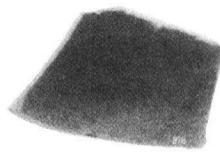
1227 (外面)



1227 (内面)



1229 (外面)



1229 (内面)



1230 (外面)



1230 (内面)

包含層出土近世遺物 (2)

高松東道路建設に伴う  
埋蔵文化財発掘調査報告 第4冊

太田下・須川遺跡  
第1分冊

平成7年3月31日 発行

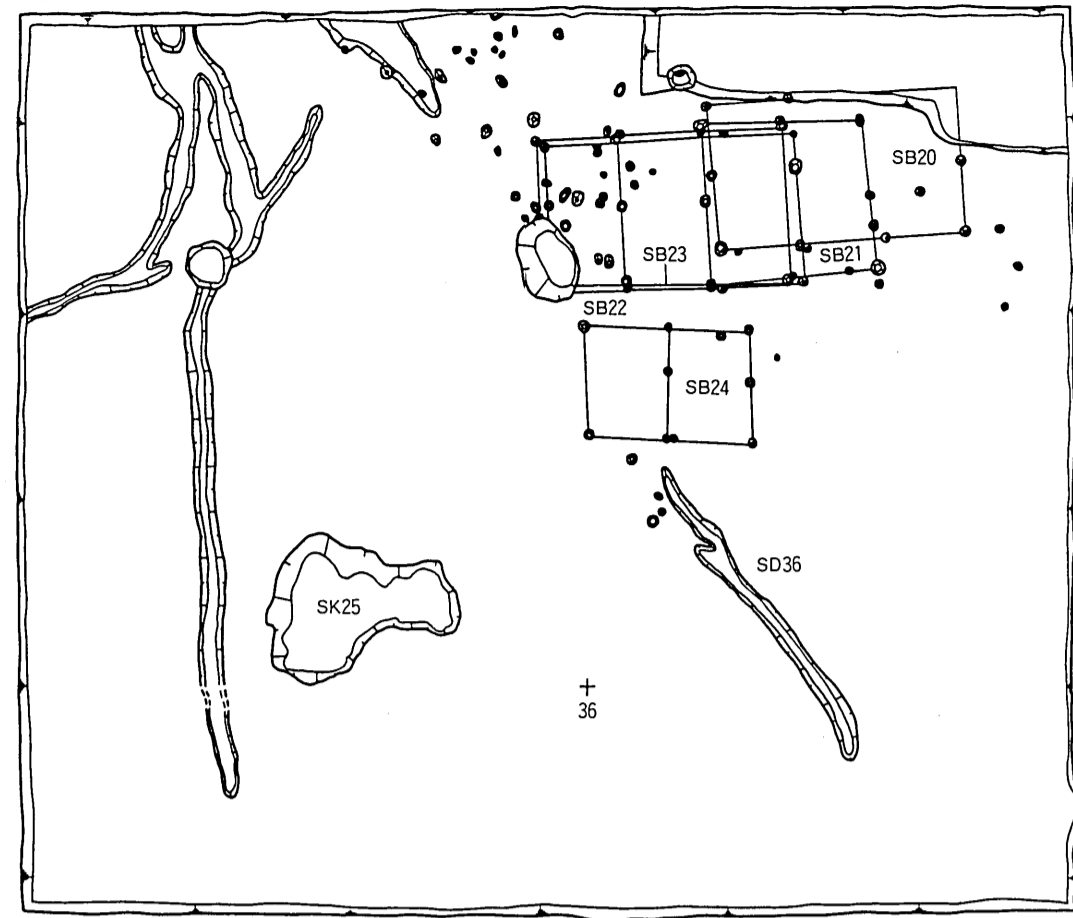
編集 財団法人香川県埋蔵文化財調査センター  
香川県坂出市府中町字南谷5001-4  
電話 (0877) 48-2191

発行 香川県教育委員会  
財団法人香川県埋蔵文化財調査センター  
建設省四国地方建設局

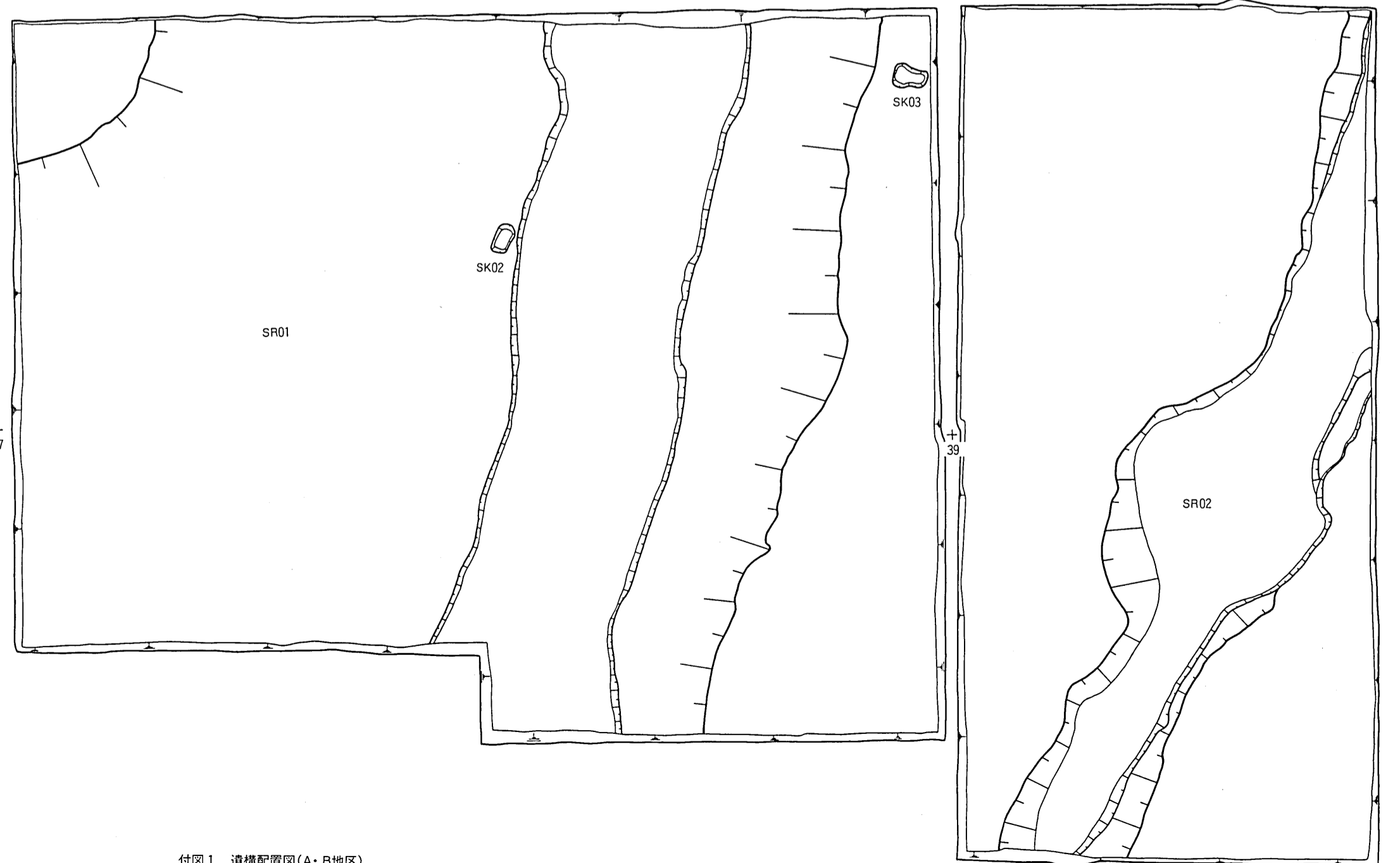
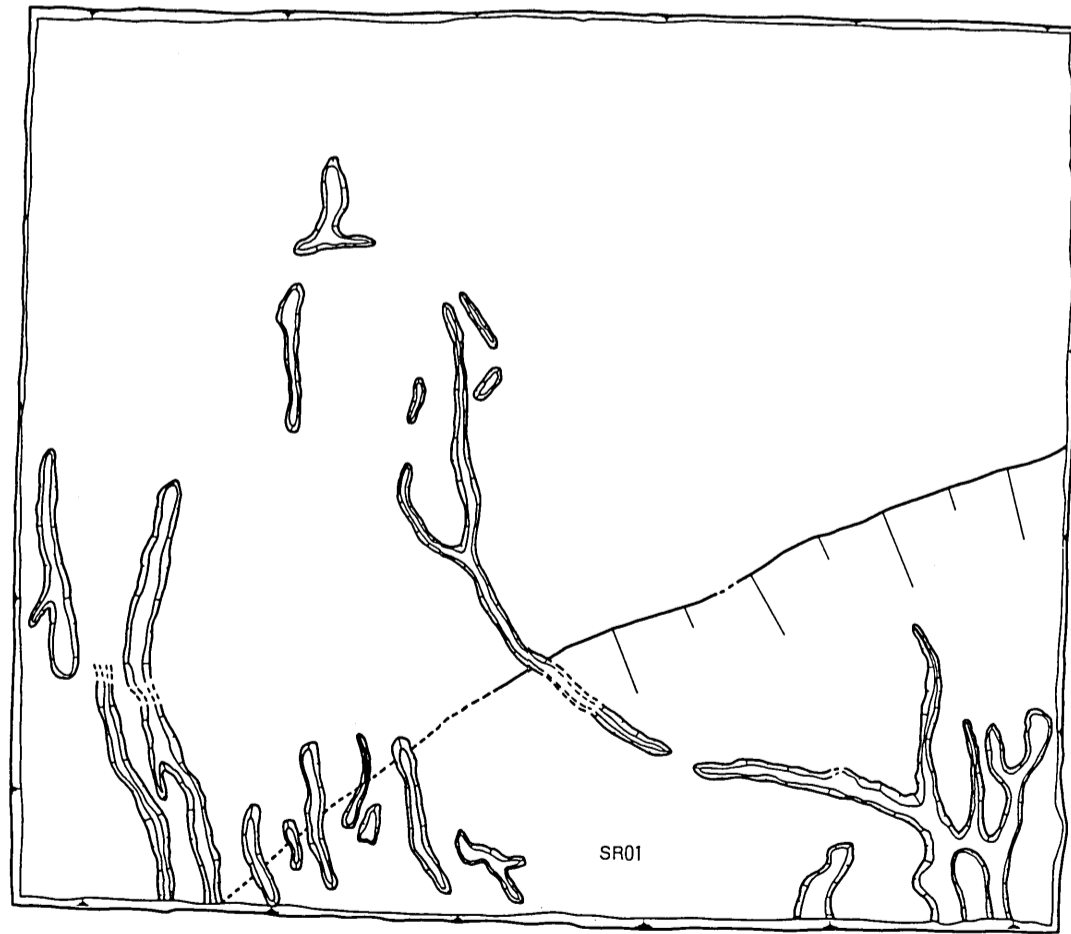
印刷 サヌキ印刷株式会社



第1面

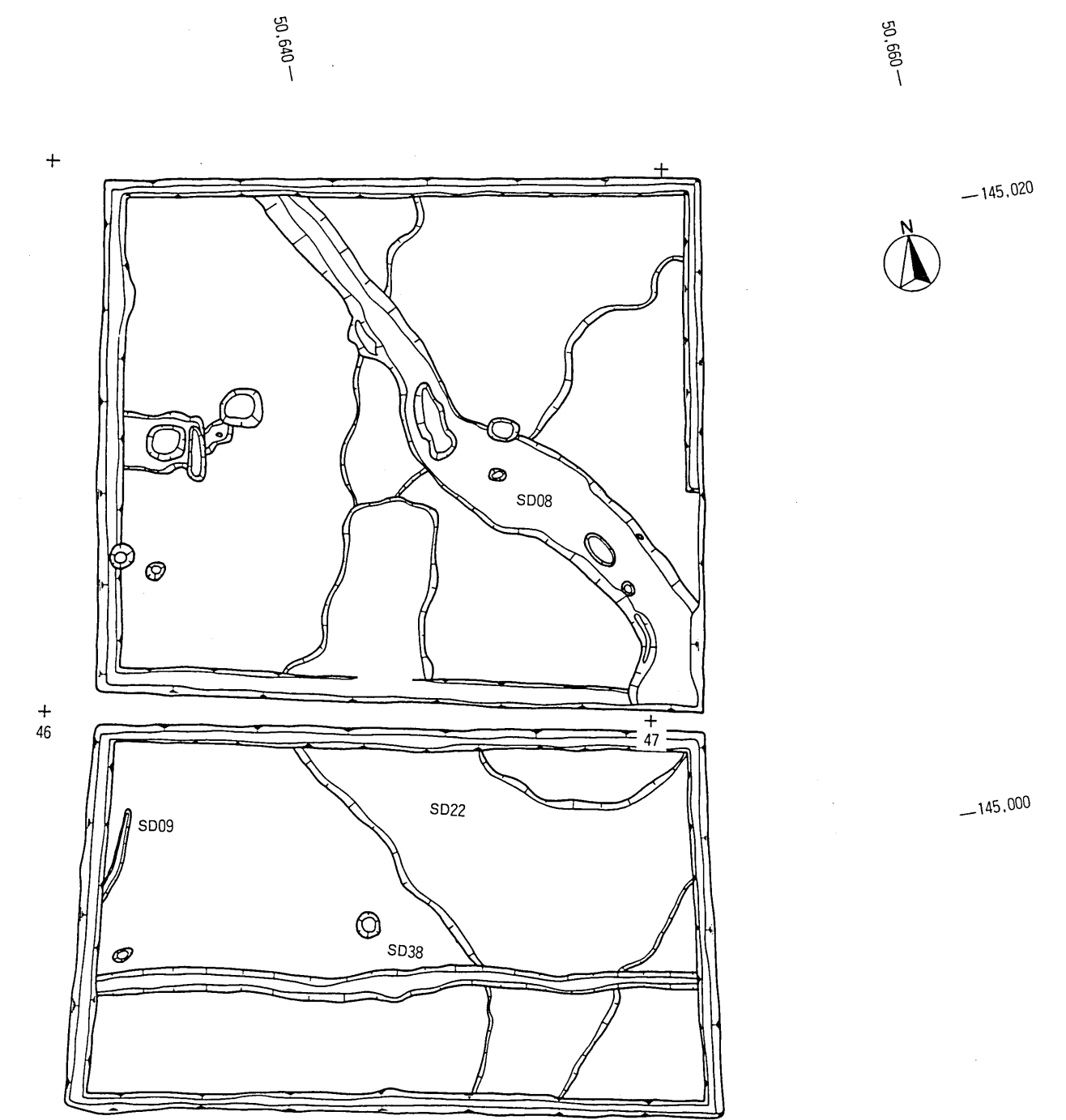
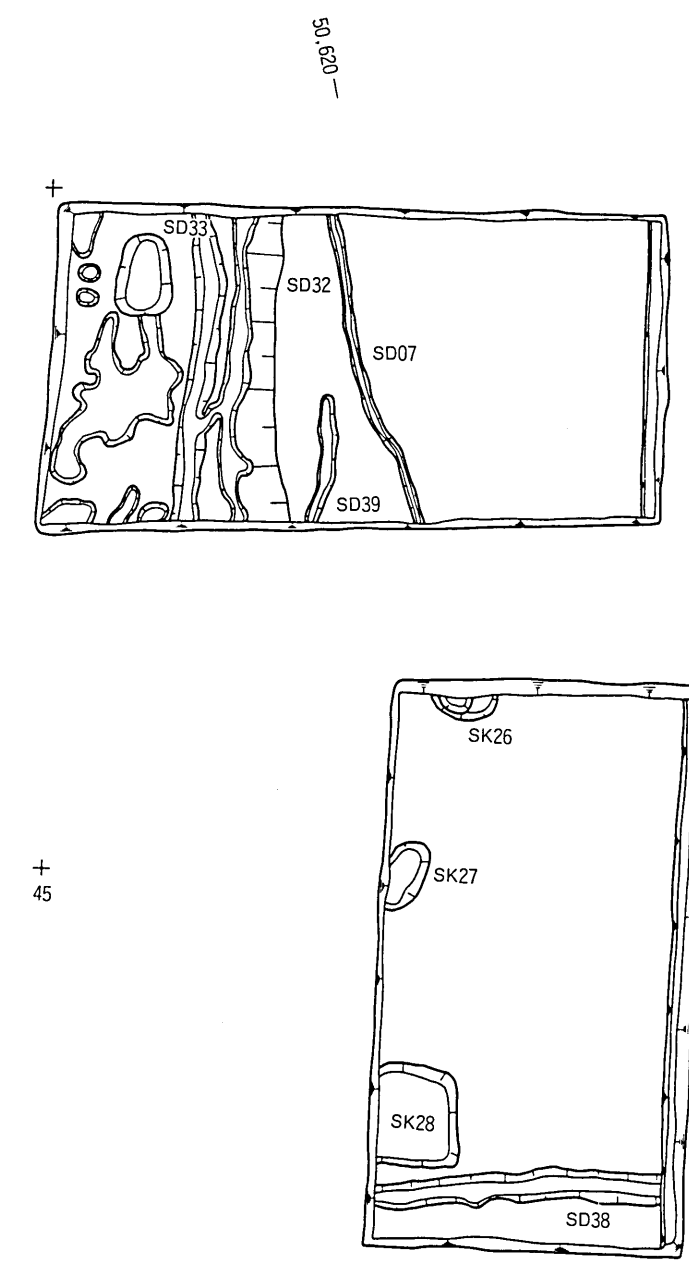
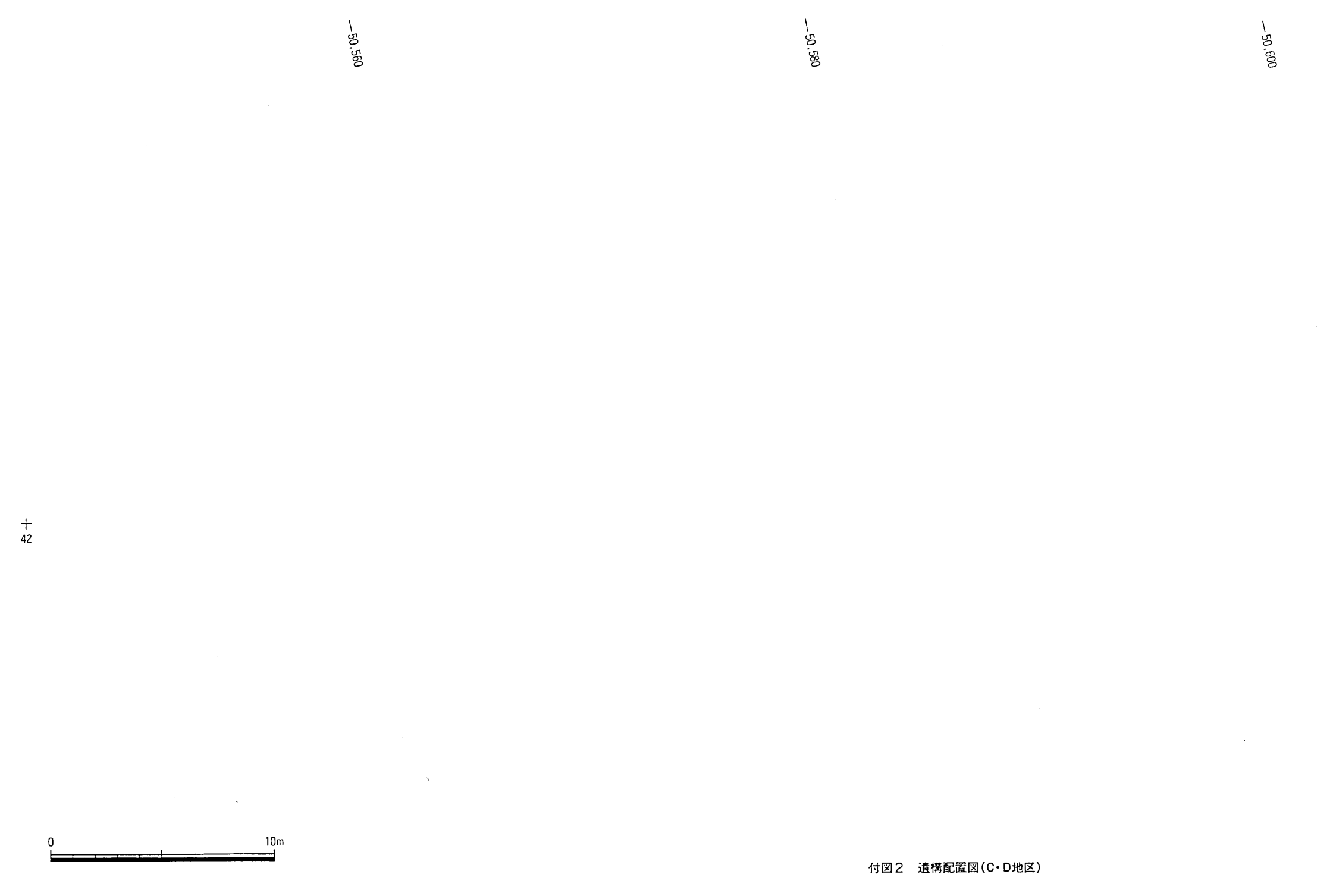
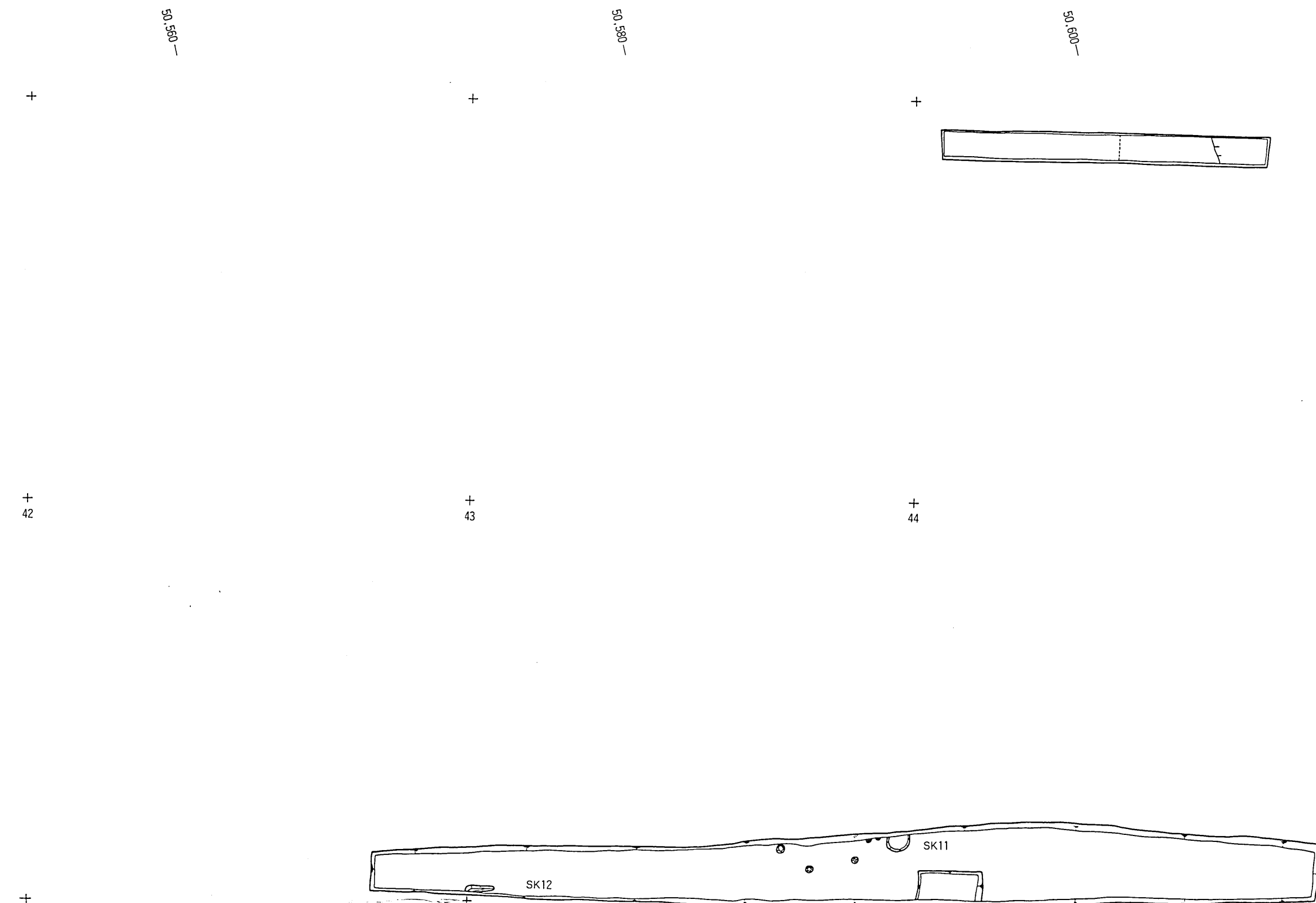
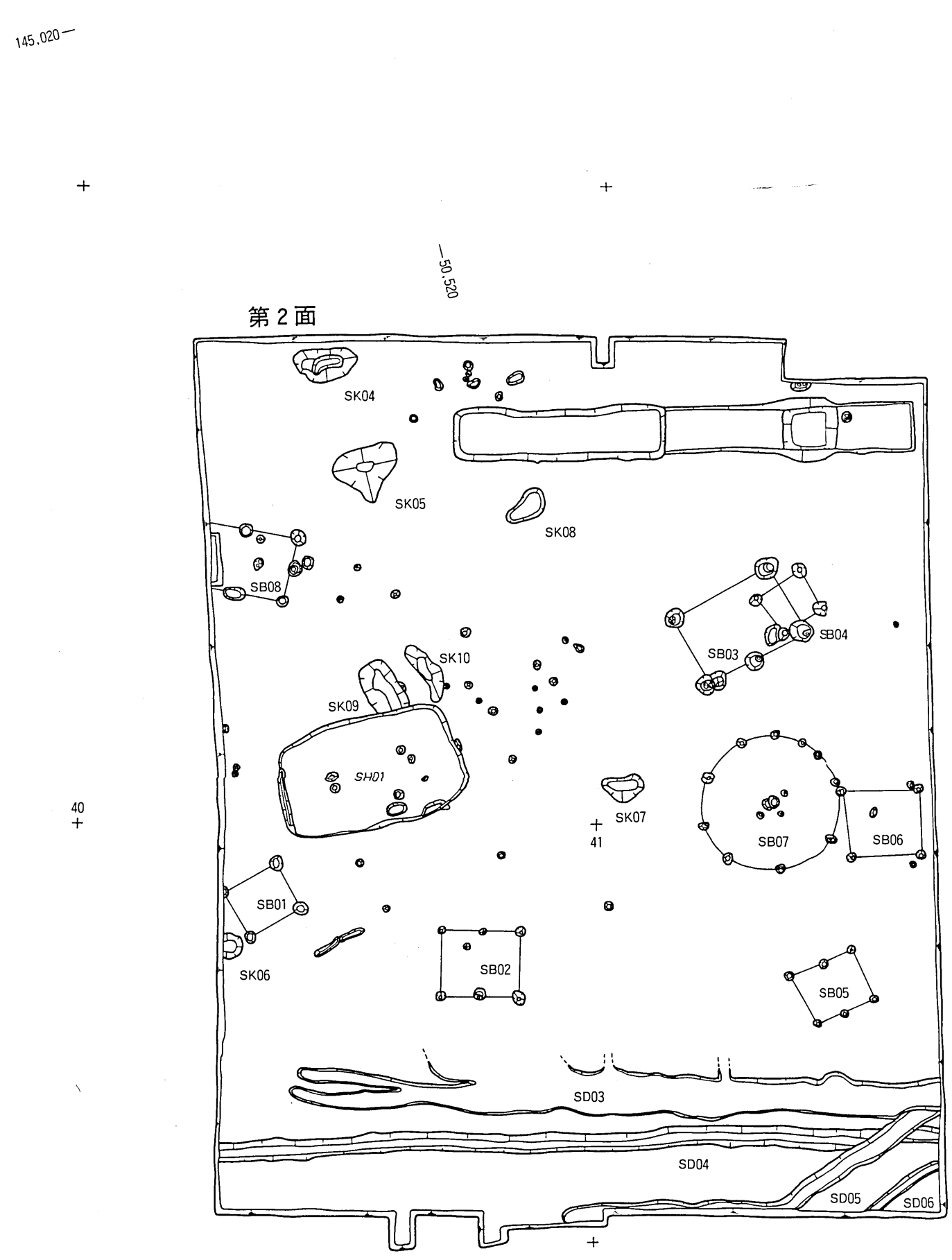
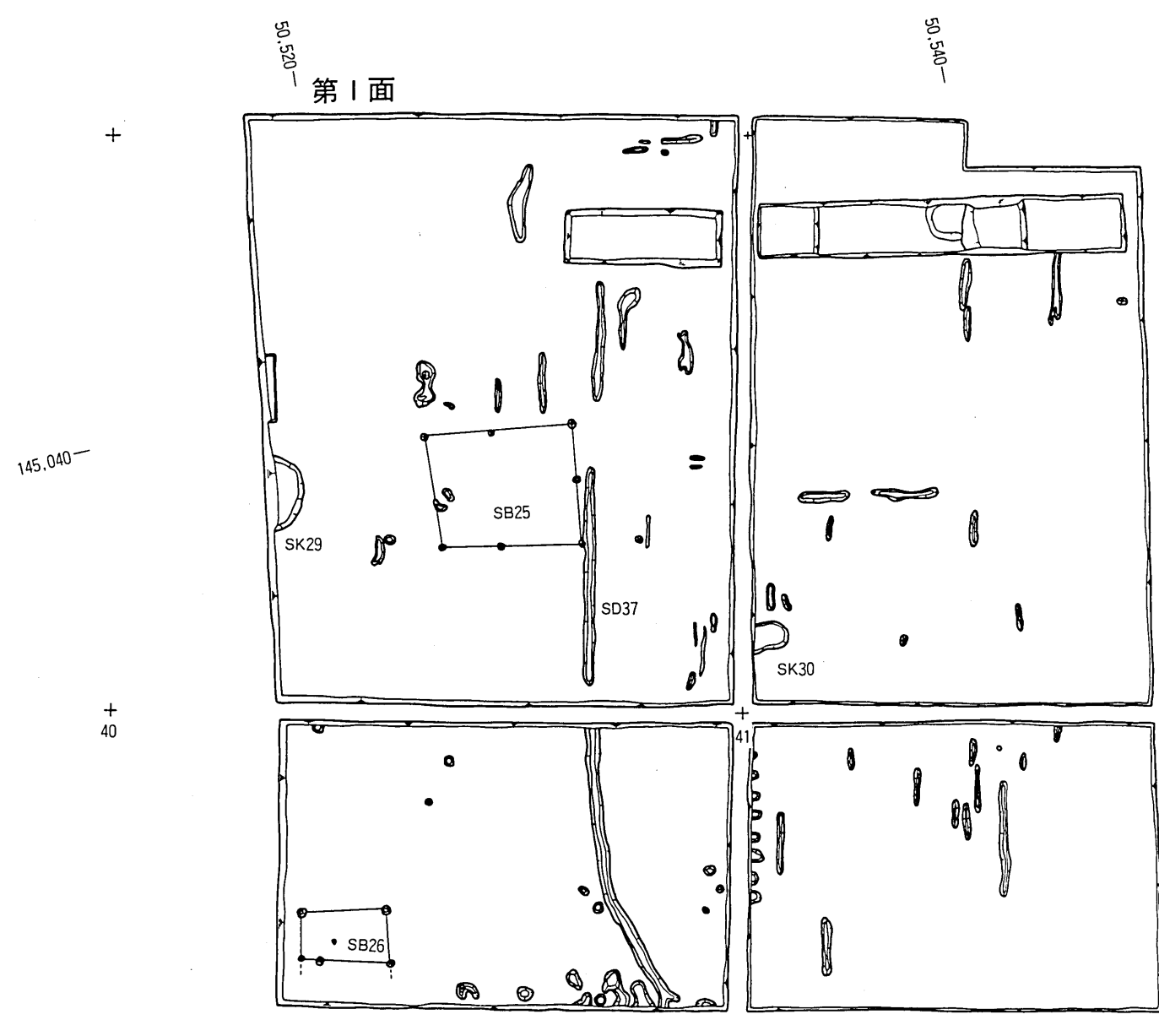


第2面

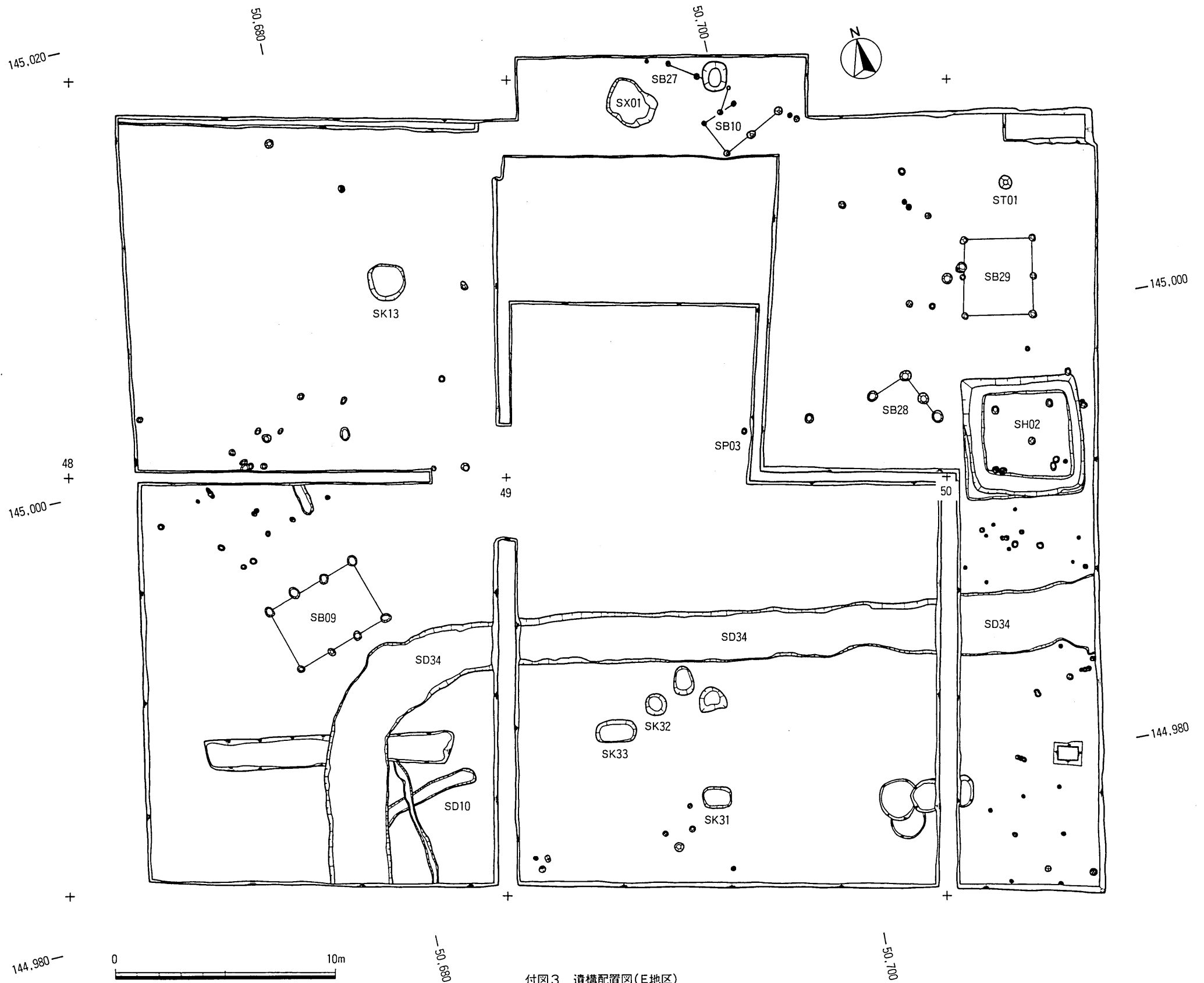


付図1 遺構配置図(A・B地区)

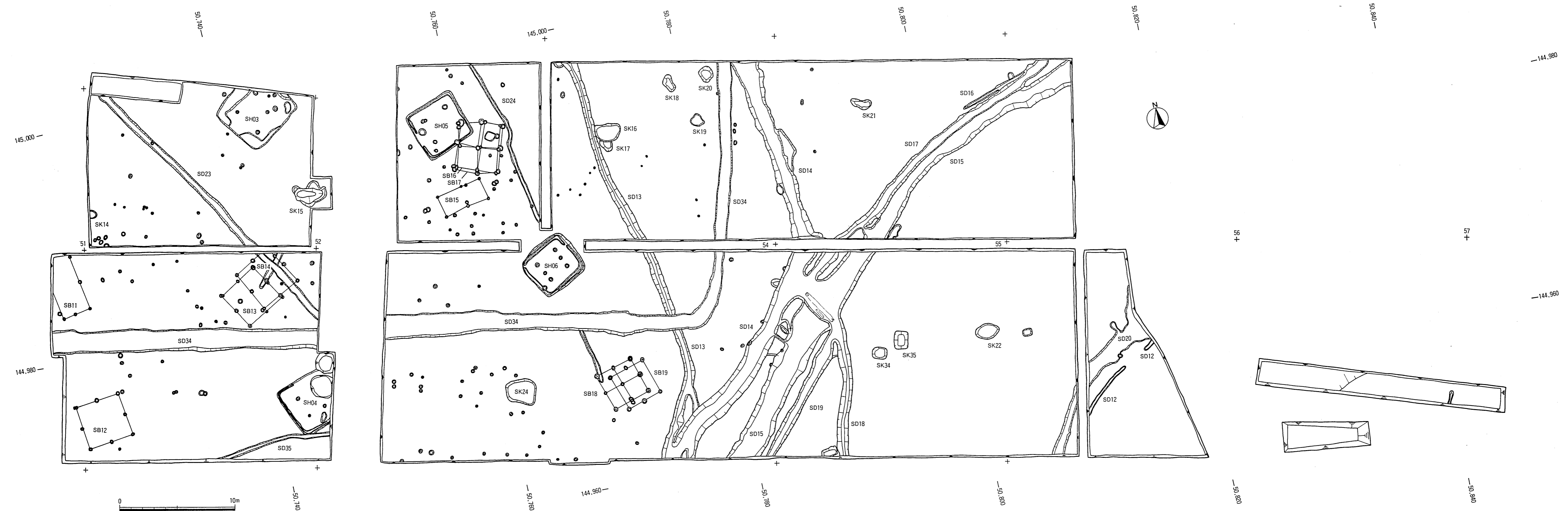




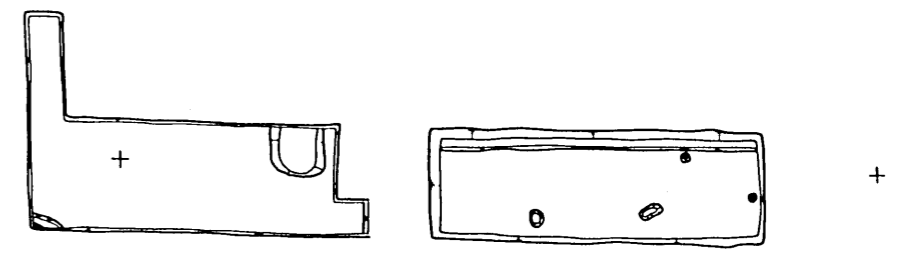
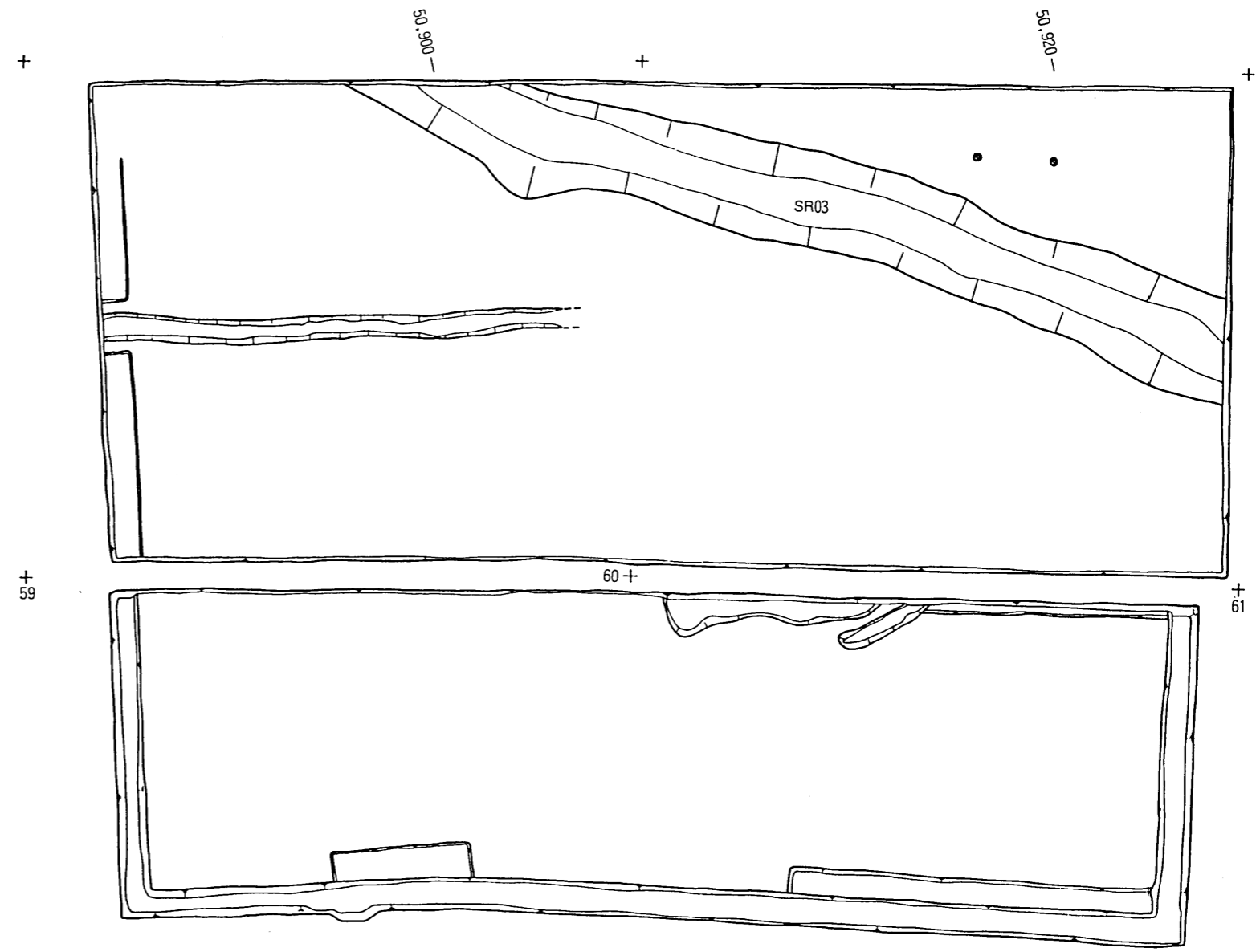
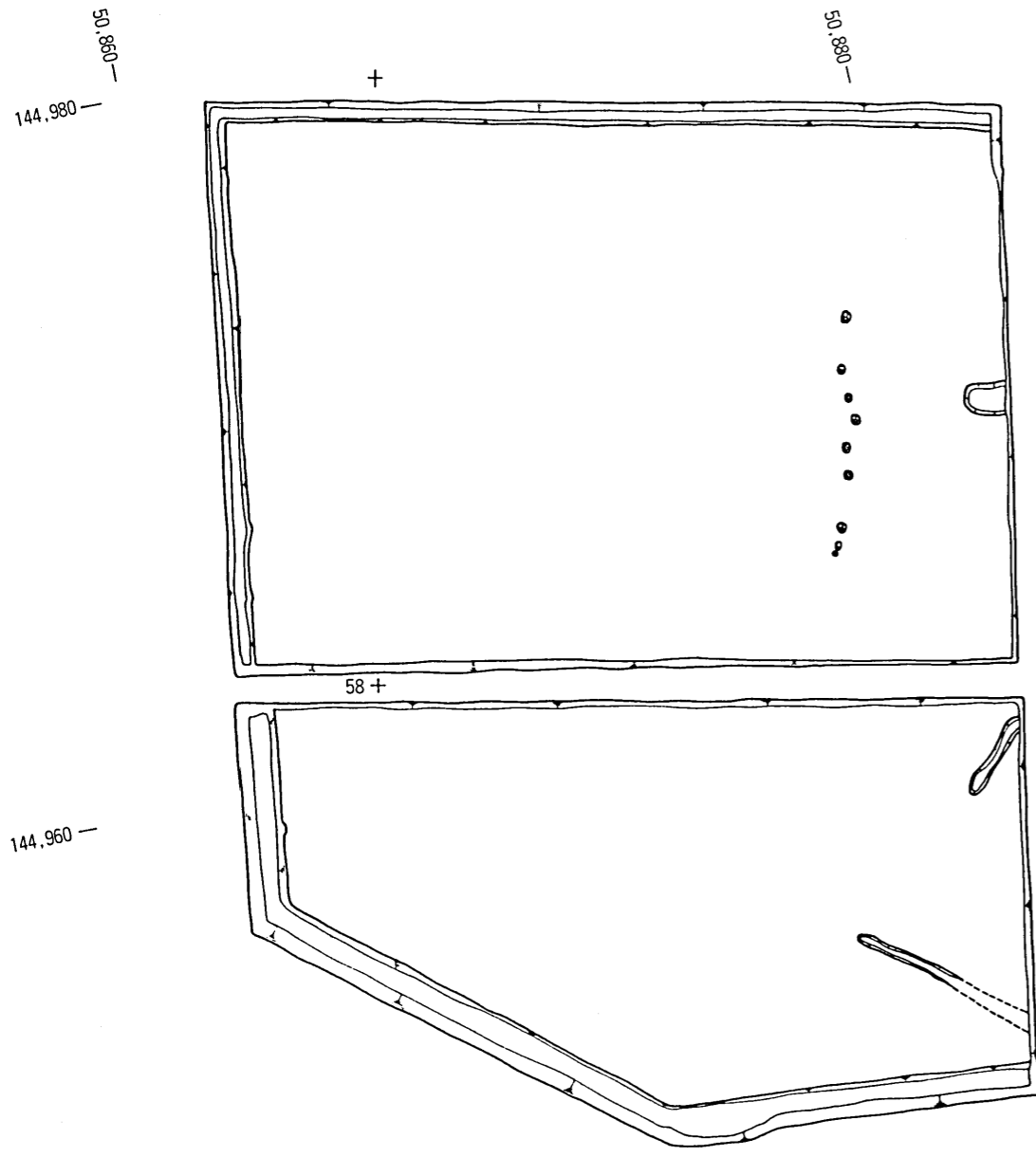
付図2 遺構配置図(C-D地区)



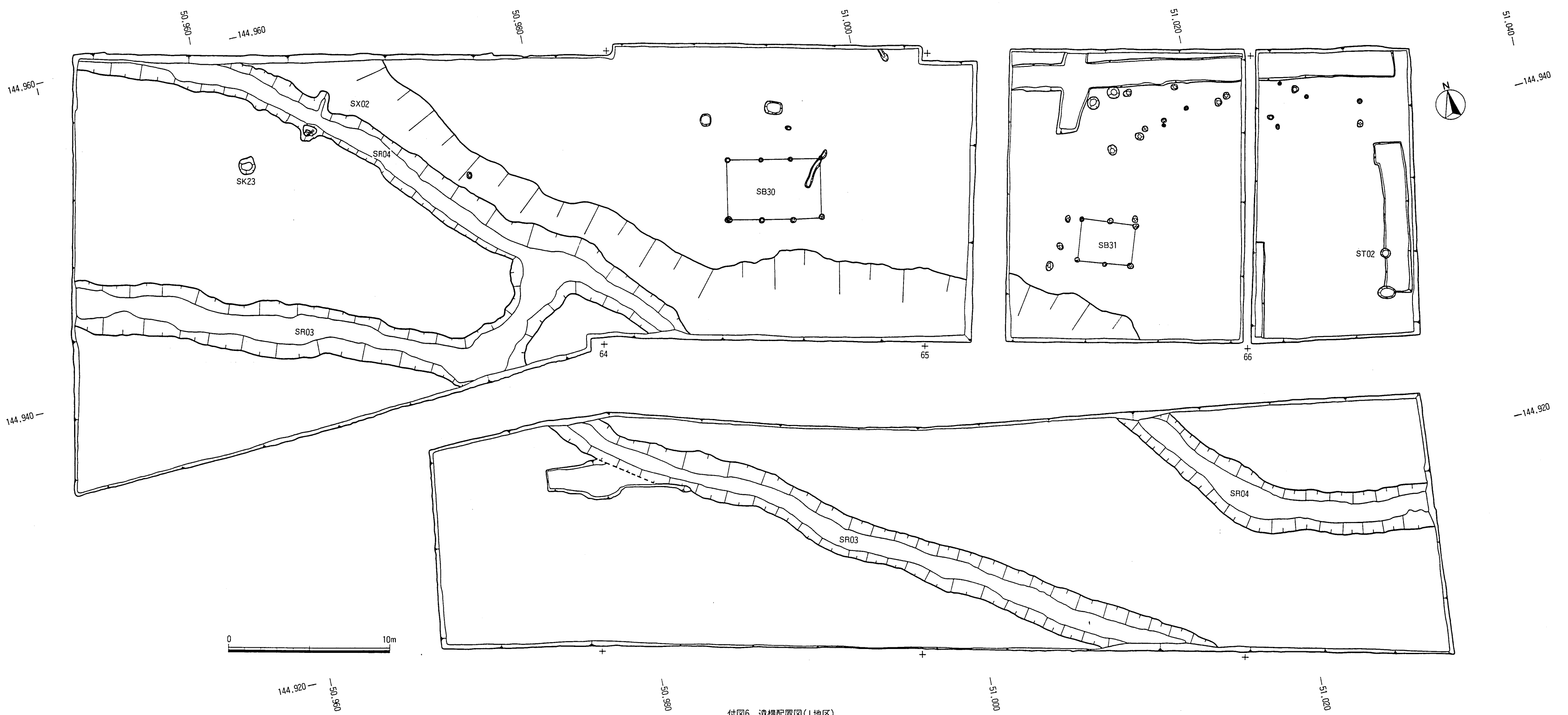
付図3 遺構配置図(E地区)



付図4 遺構配置図(F・G地区)



付図5 遺構配置図(H地区)



付図6 遺構配置図(I地区)