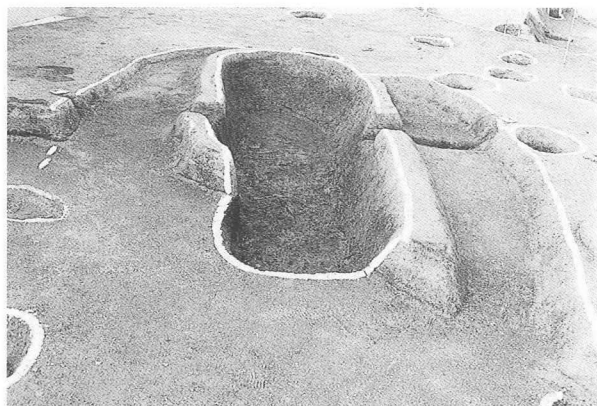
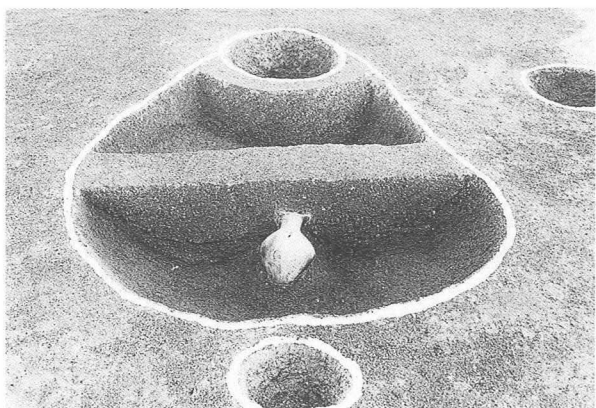




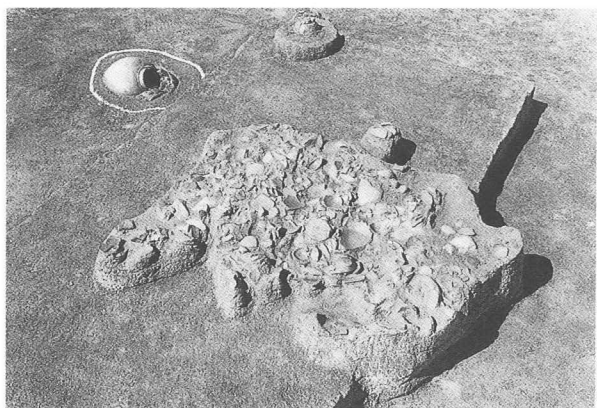
(1) II区 SKa20 (北西から)



(2) II区 SKa25 (南東から)



(3) II区 SKa37 (東から)



(4) II区 SXa09 (南から)



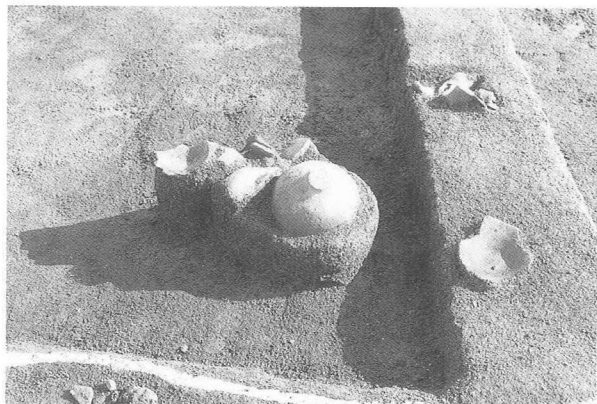
(5) I区 SDa31・33・36~38 (東から)



(1) III区 SDa34 土層断面(東から)



(2) II区 SDa47 遺物出土状況①(西から)



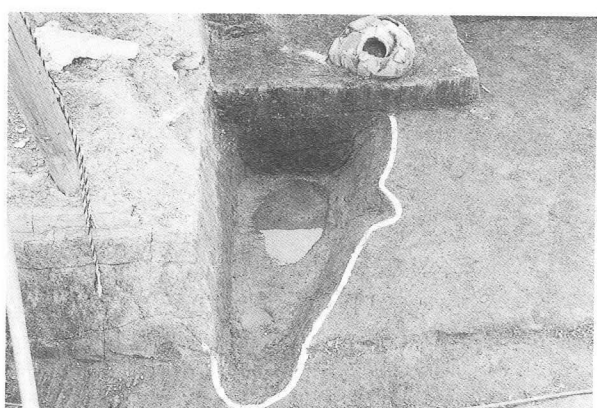
(1) II区 SDa47 遺物出土状況② (西から)



(2) II区 SDa32 土層断面 (北から)



(3) I区 SDa33 土層断面 (東から)



(4) II区 SDa50 (西から)



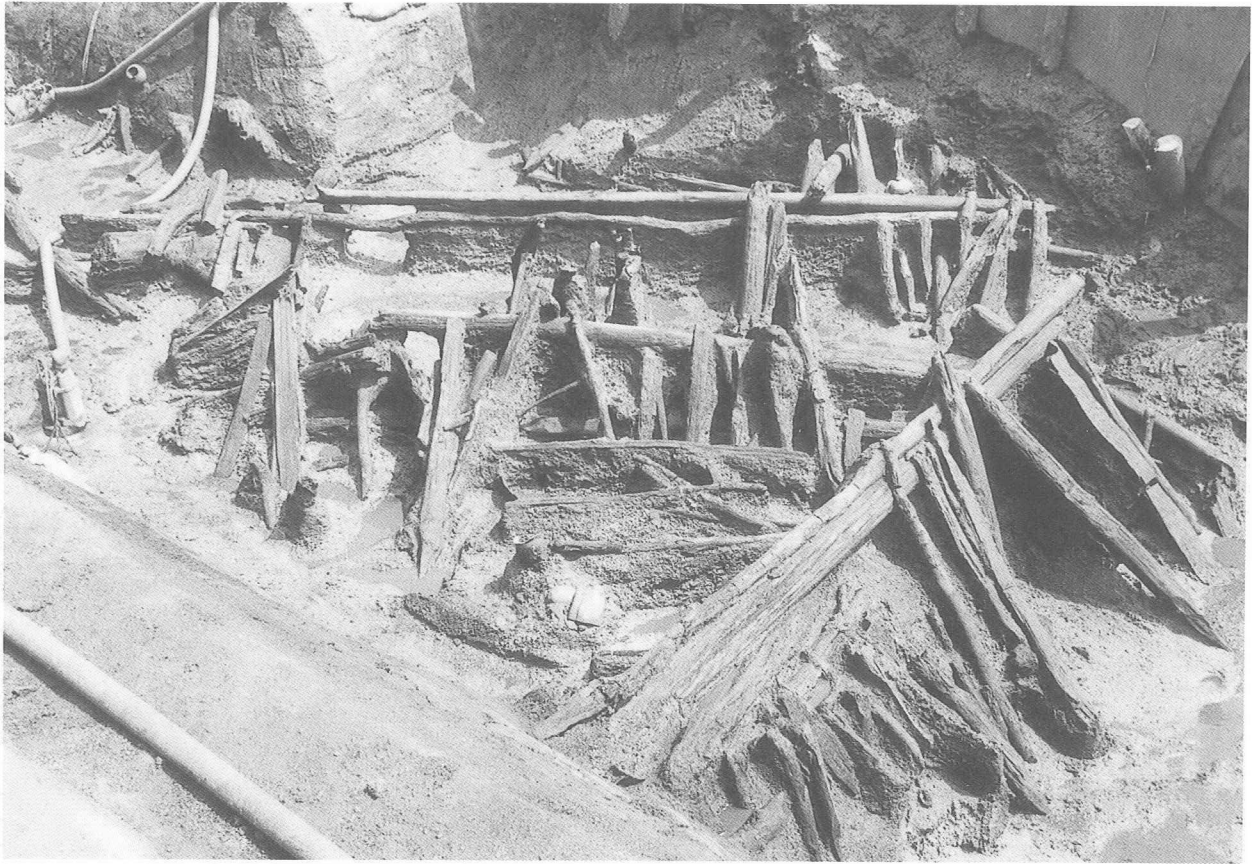
(5) III区 SDa35・64 土層断面 (東から)



(1) II区 SRa01 土層断面 (北から)



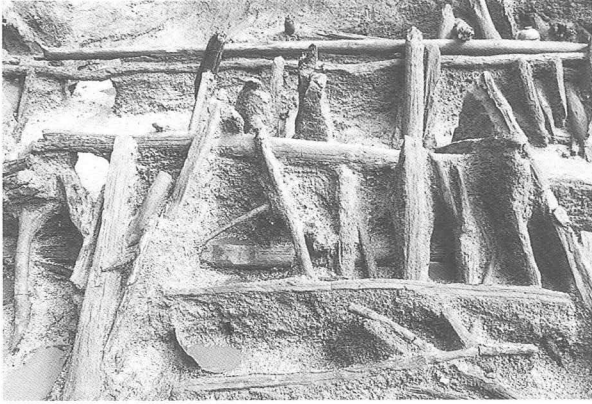
(2) I区 堰状遺構02~04 検出状況① (西から)



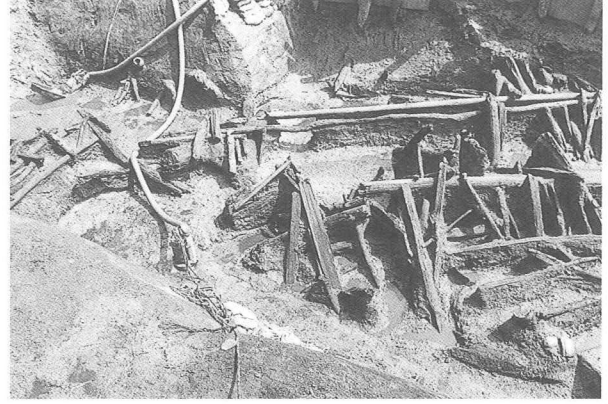
(1) I区 堰状遺構02~04 検出状況② (北西から)



(2) I区 堰状遺構02 (西から)



(1) I区 堰状遺構03・04① (北から)



(2) I区 堰状遺構03・04② (北西から)



(3) I区 堰状遺構04 細部① (北東から)



(4) I区 堰状遺構04 細部② (東から)



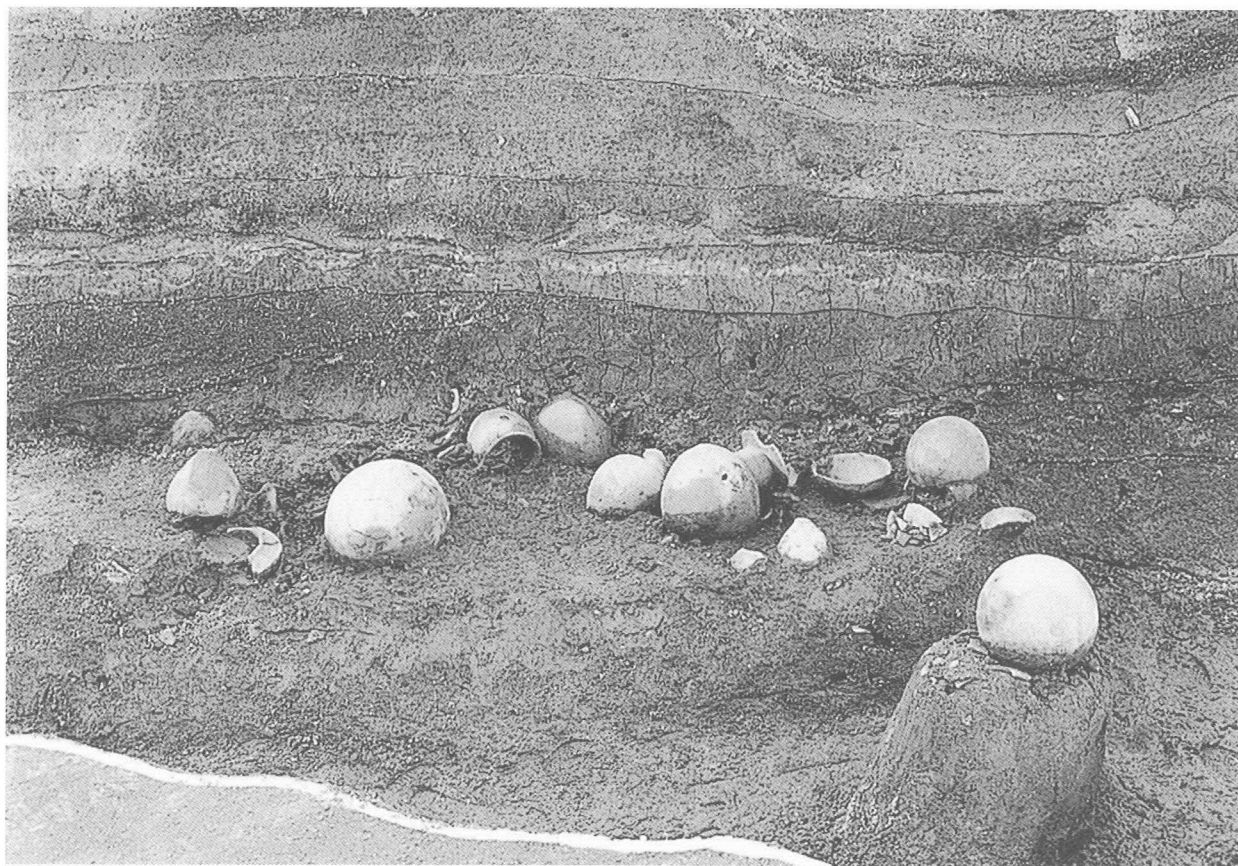
(5) I区 堰状遺構04 細部③ (西から)



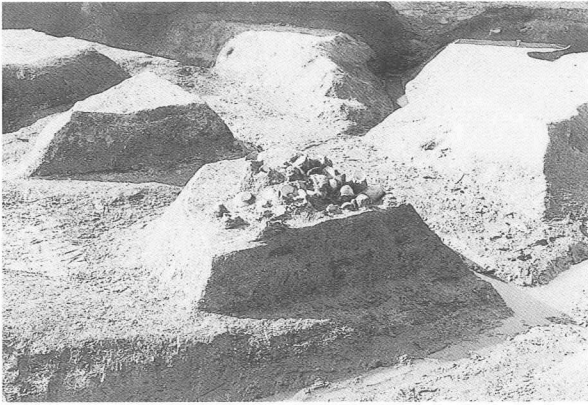
(6) I区 堰状遺構04 細部④ (西から)



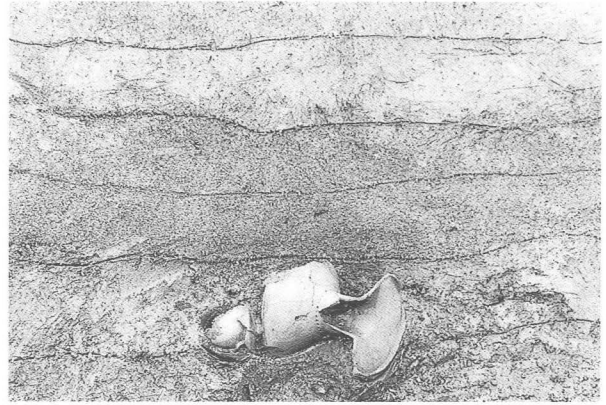
(1) III区 SDa66・67, SRa02 合流部(北東から)



(2) III区 SRa02 D群(東から)



(1) Ⅲ区 SRa02 B群 (南東から)



(2) Ⅲ区 SRa03 A群 (北から)

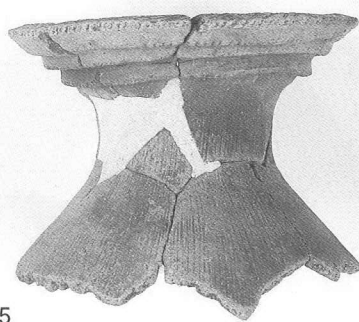


(3) Ⅲ区 南壁土層 (北から)





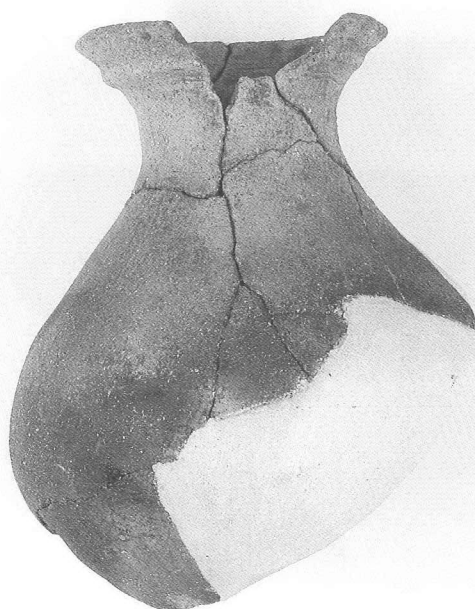
SHa12 41



SHa13 55



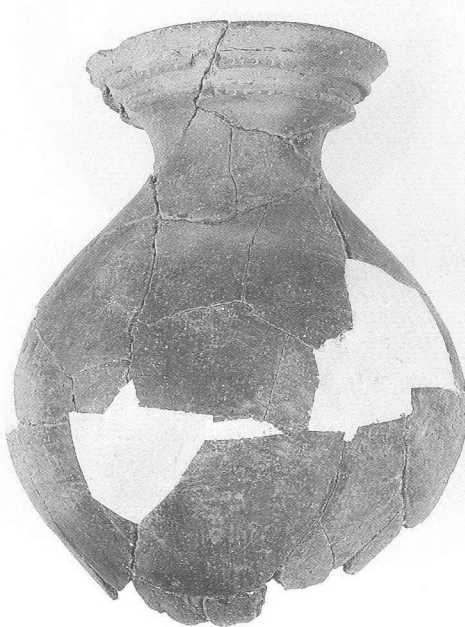
SHa13 57



SHa13 60



SHa13 62



SHa13 64



SHa13 65



SHa13 76



SHa13 80



SHa15 89



SHa16 98



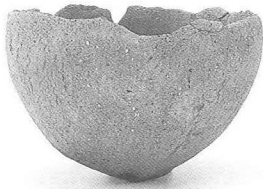
SHa16 99



SHa28 124



127



SHa28 130



131



SPa08 154



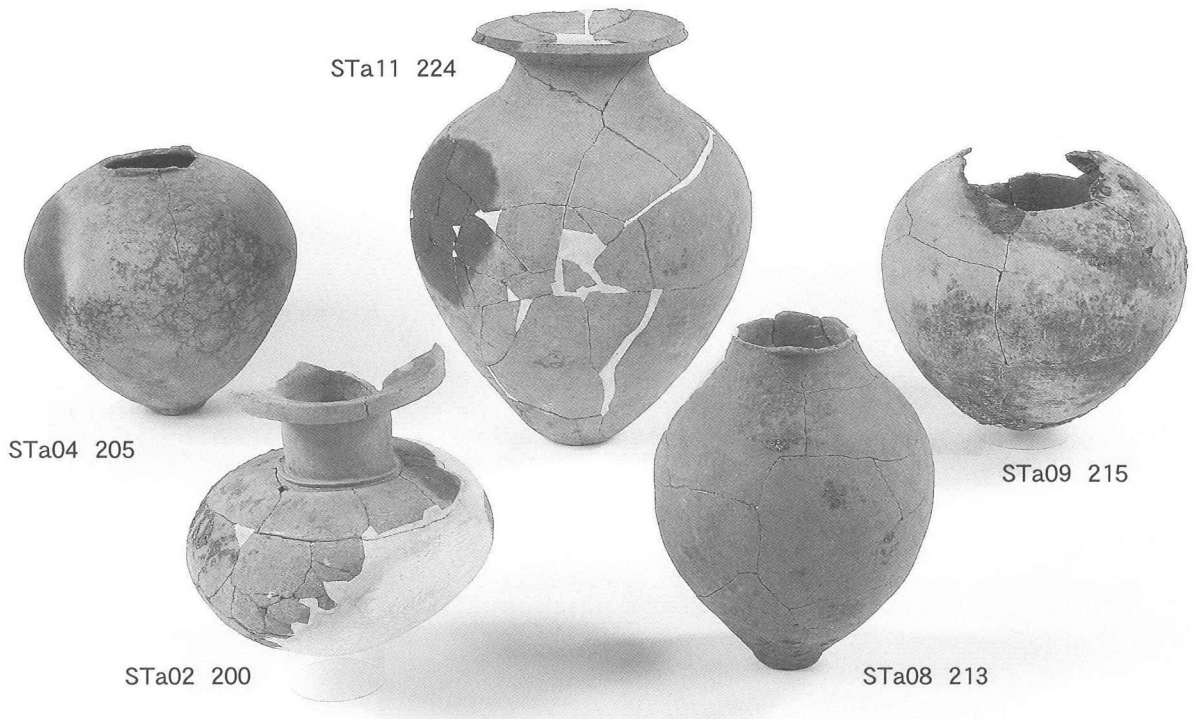
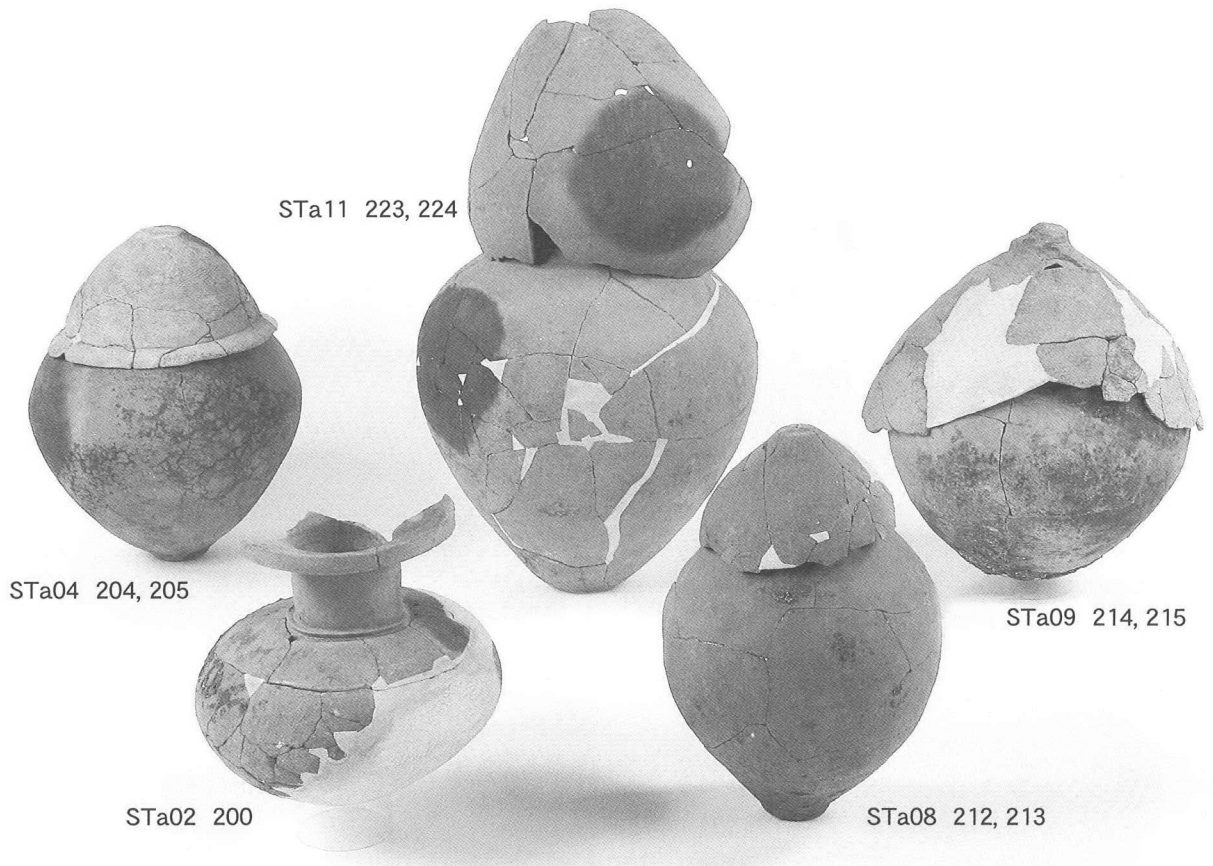
SPa08 154



SKa08 176



SKa37 192



STa17 239, 240



STa01 197, 198



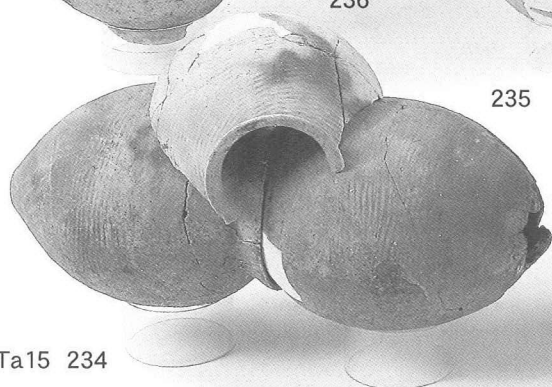
STa13 227, 228



236

235

STa15 234



STa16 237, 238



STa17 240



STa01 198



STa13 228

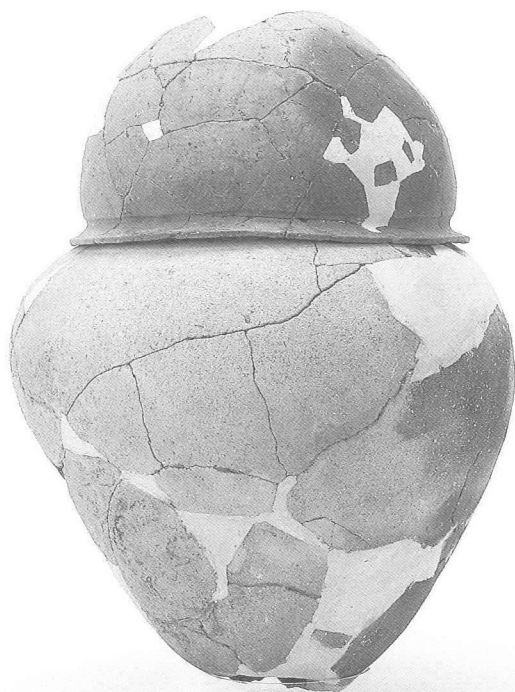


STa15 234

STa15 238

STa15 235





STa01 197, 198



STa01 198



STa01 197



STa04 204, 205



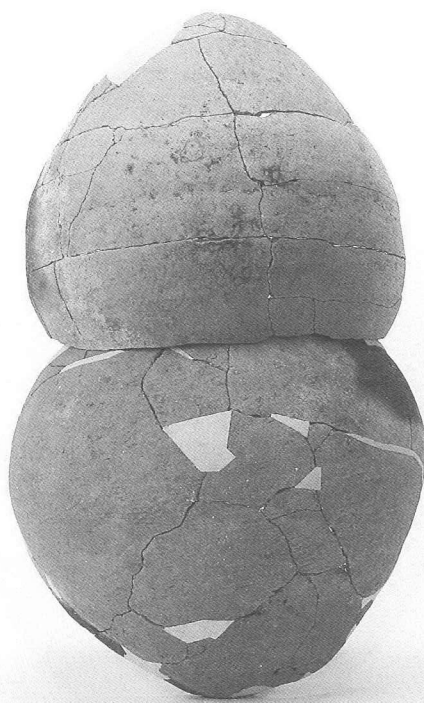
STa04 205



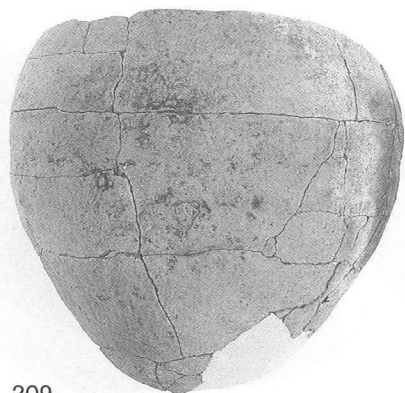
STa04 204



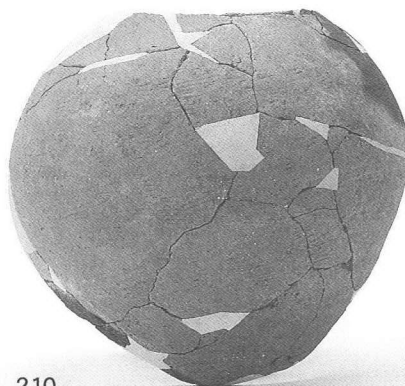
STa02 200



STa06 209, 210



STa06 209



STa06 210

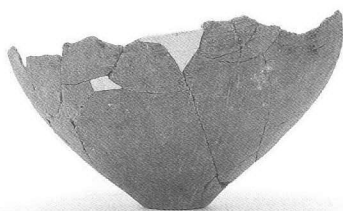




STa08 212, 213



STa08 213



STa08 212



STa09 214, 215



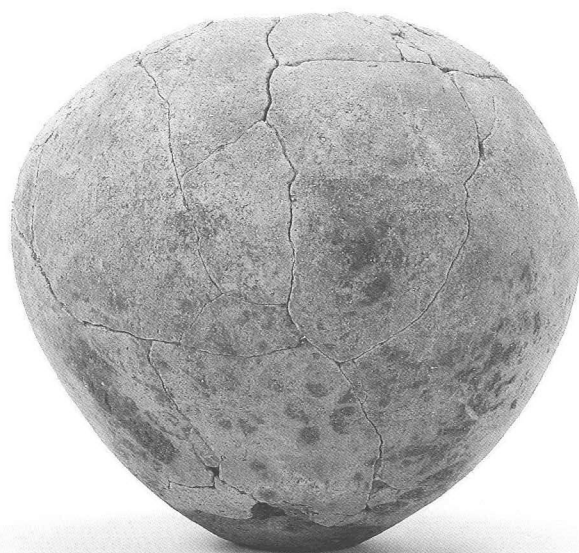
STa09 215



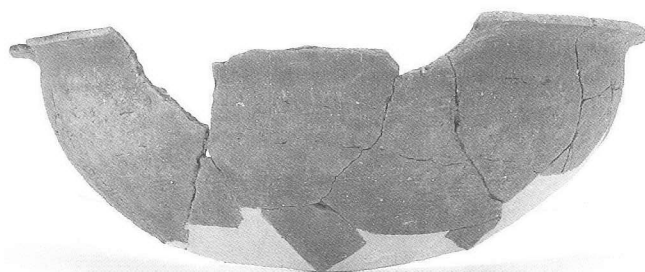
STa09 214



STa10 219, 220



STa10 220



STa10 219



STa11 223, 224



STa11 224



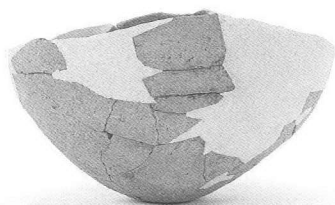
STa11 226



STa13 227, 228



STa13 228



STa13 227



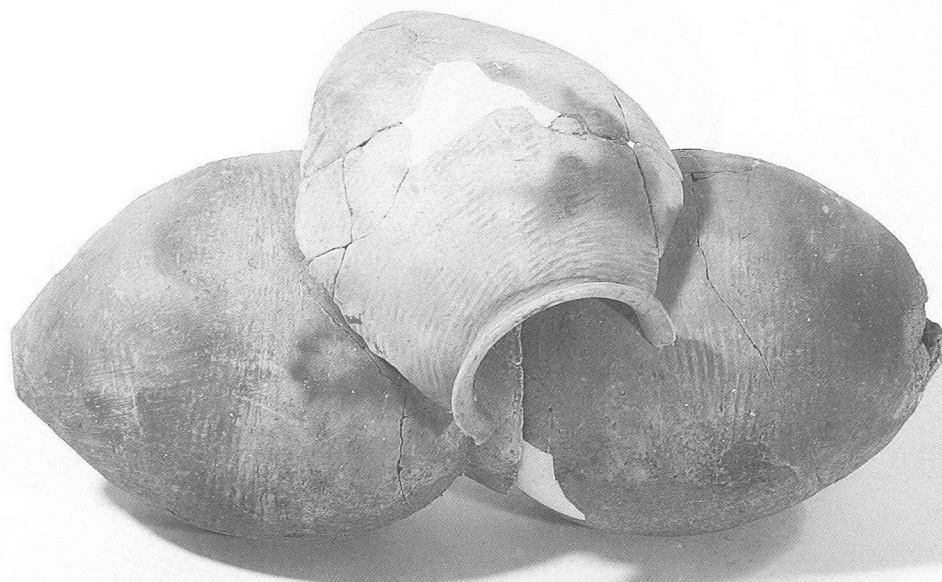
STa12 230



STa14 232



STa14 233



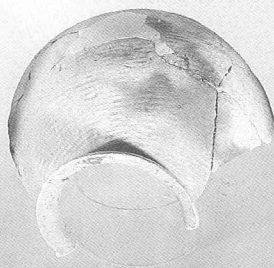
STa15 234

236

235



STa15 234



236



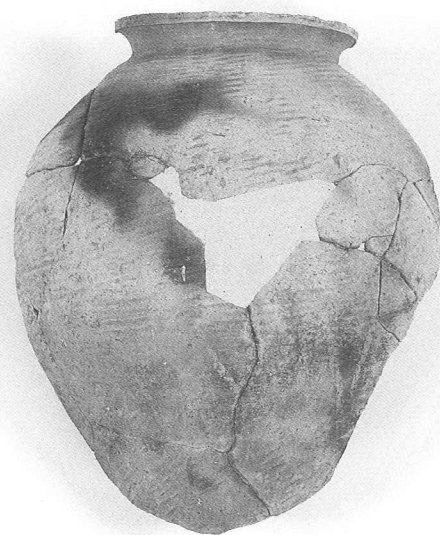
235



STa15 234



STa15 235



STa15 236





STa16 237, 238



STa16 238



STa16 237



STa17 239, 240



STa17 240



STa17 239



SDa58 313



SDa47 351



SDa47 352



SDa47 353



SDa47 354



SDa47 358



SDa47 365



SDa47 367



SDa47 372



SDa47 375



SDa47 369



SDa47 376



SDa47 383



SDa64 386



SDa66 410



SDa67 424



SDa64 407



SDa67 431



SDa67 433



SDa67 434



SDa67 435



SDa67 432



SDa67 444



SDa67 445



SDa67 447



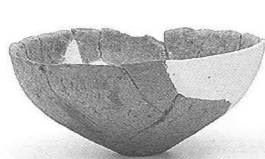
SDa67 448



SDa67 454



SDa67 455



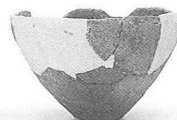
SDa67 456



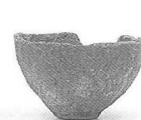
457



SDa67 458



459



460

图版56



SDa67 466



462



464



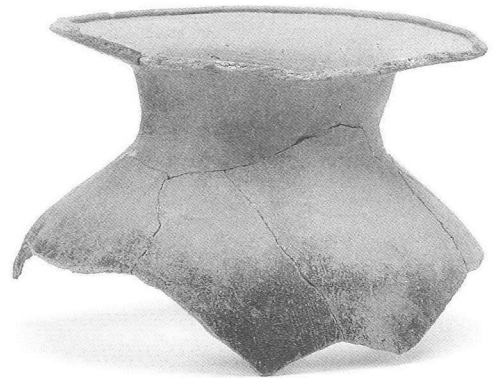
SDa67 463



SRa01 495



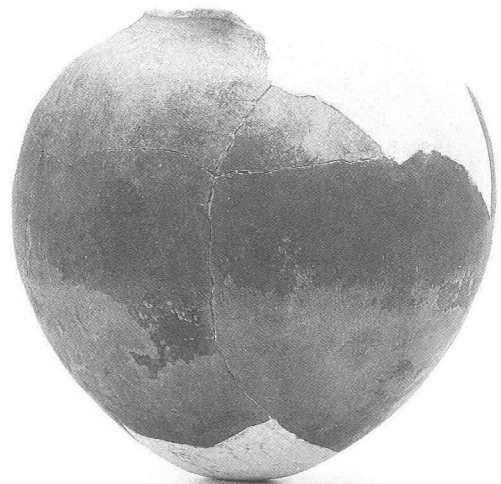
SRa01 483



SRa01 525



SRa01 501



SRa01 528





SRa01 532



SRa01 534

544



545



SRa01 541



542



543

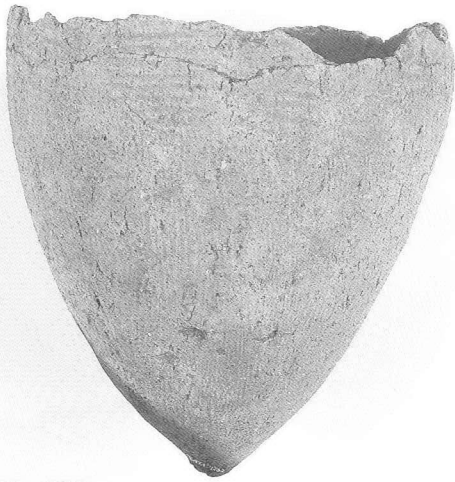
图版58



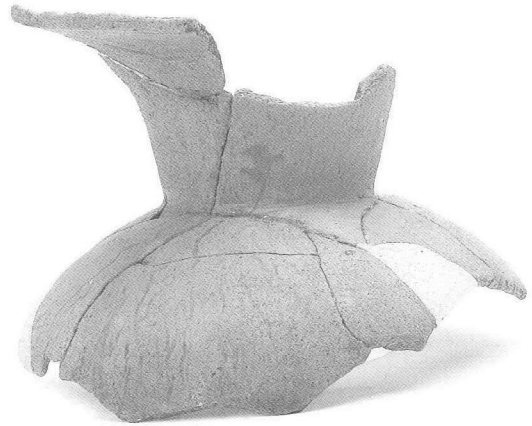
SRa02 615



SRa02 621



SRa02 623



SRa02 635



SRa02 634



SRa02 636



SRa02 637



SRa02 639



SRa02 641



SRa02 642



SRa02 640

图版60



SRa02 651



SRa02 654



SRa02 655



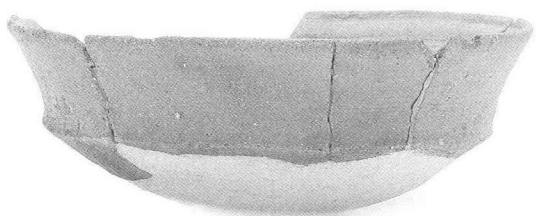
SRa02 656



SRa02 657



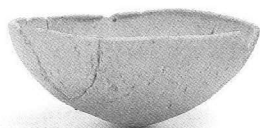
SRa02 660



SRa02 661



SRa02 669



SRa02 672



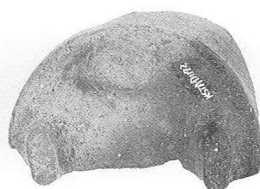
674



SRa02 680



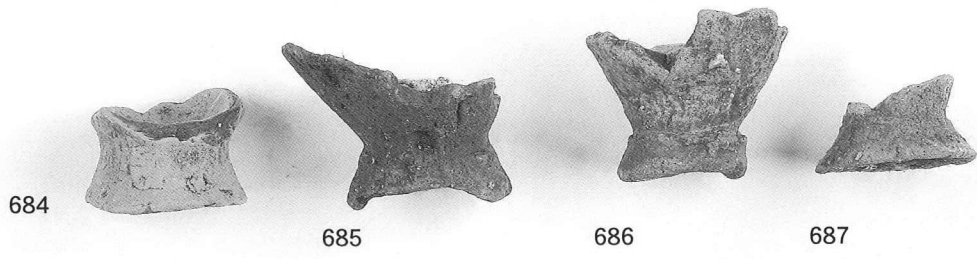
SRa02 678



SRa02 678



SRa02 675



684

685

686

687



SRa02 688

689

690



SRa02 692



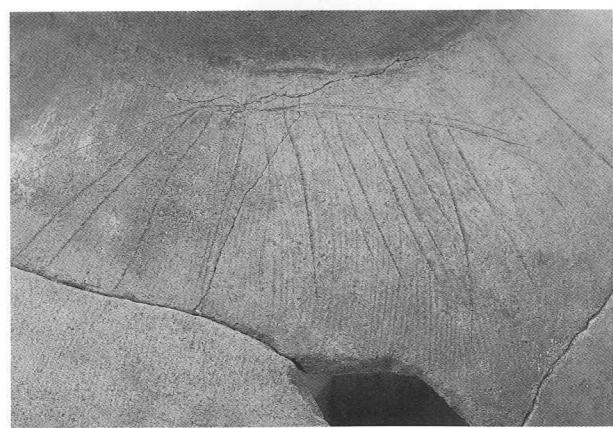
SRa02 698



SRa02 703



SRa02 708



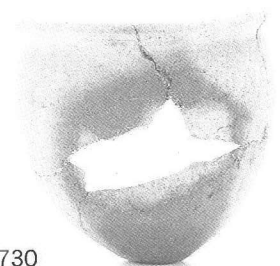
SRa02 703



SRa02 715



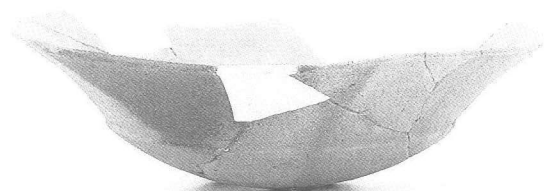
SRa02 718



SRa02 730



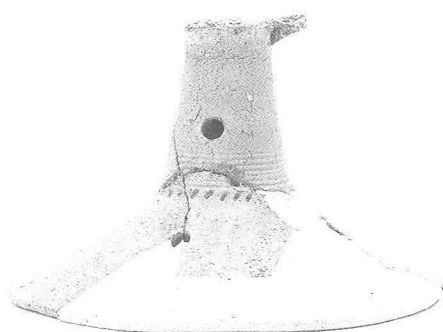
SRa02 723



SRa02 733



SRa02 724



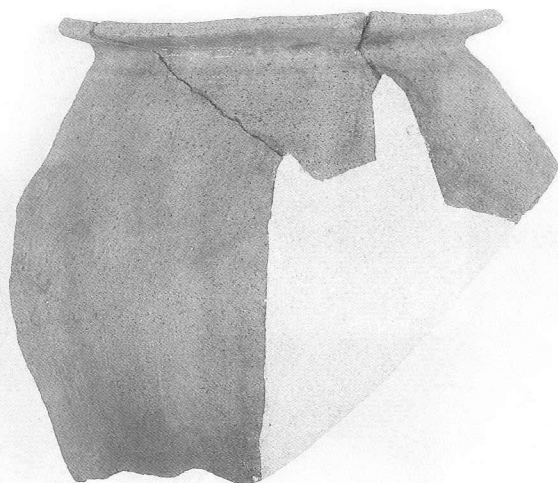
SRa02 739



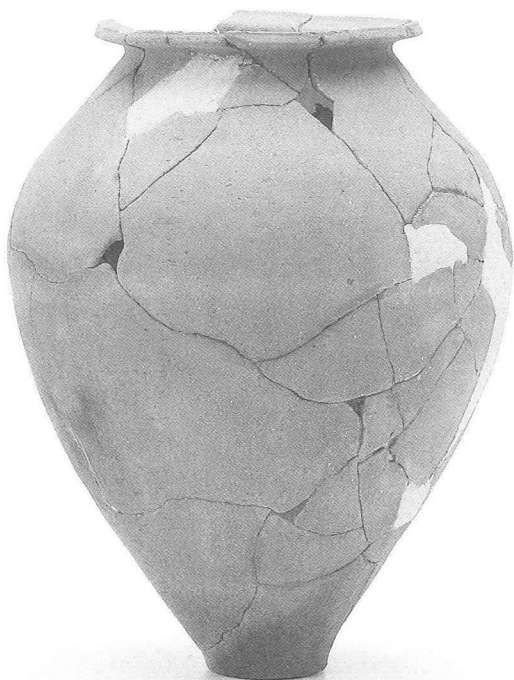
SRa02 747



SRa02 752



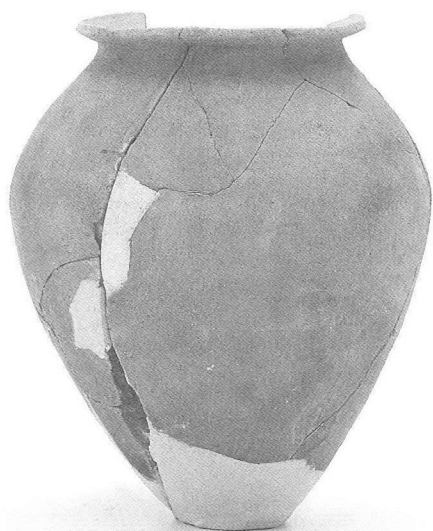
SRa02 768



SRa03 800



SRa03 801



SRa03 802



SRa03 803





SRa03 805



SRa03 828



SRa03 821



SRa03 822



SRa03 830



SRa03 833



SRa03 834



SRa03 838



SRa03 841



SRa03 847



SRa03 848



SRa03 849



SRa03 850



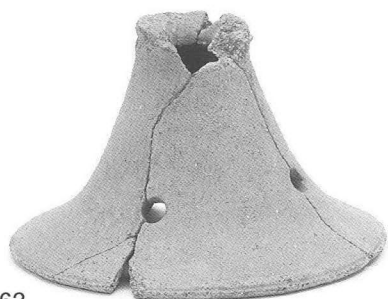
SRa03 855



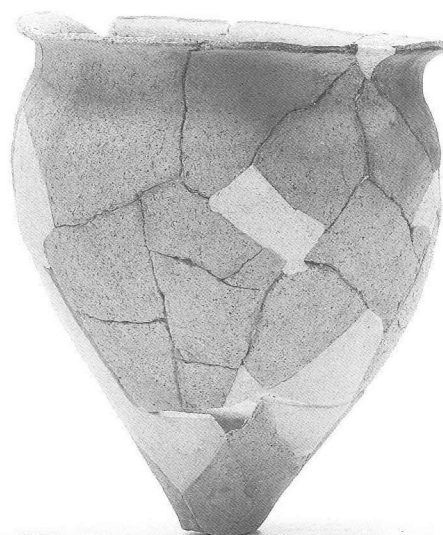
SRa03 866



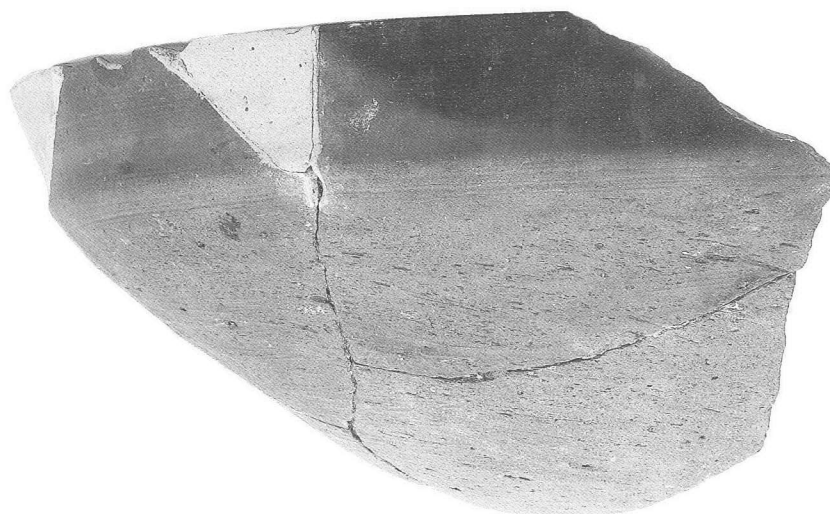
SRa03 859



SRa03 862



SRa03 867



SRa03 864

图版68



包含層 874



包含層 882



包含層 874



包含層 894



包含層 945



包含層 946