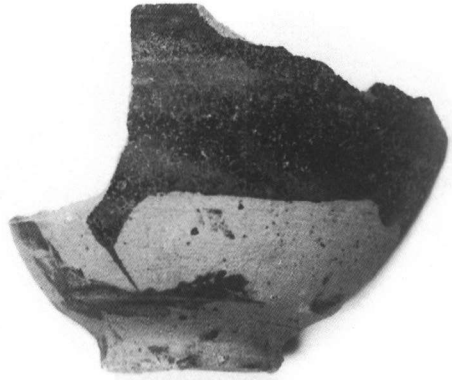
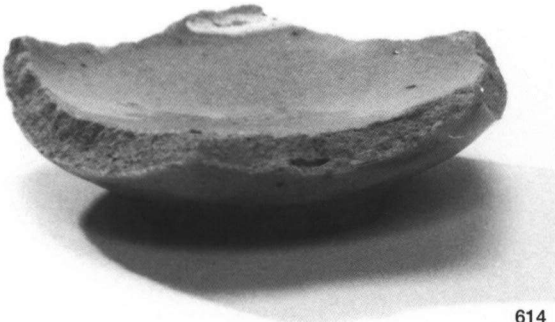




1242



1237



614



1023



1229



1219



1220



1218



346



1805



792



876



846



1235



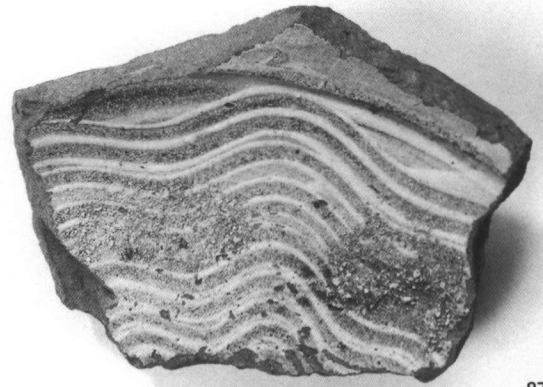
1236



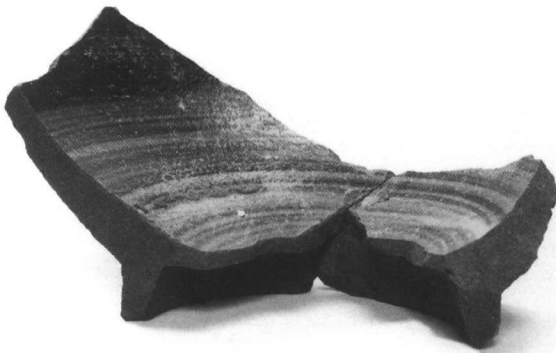
1351



1745



878



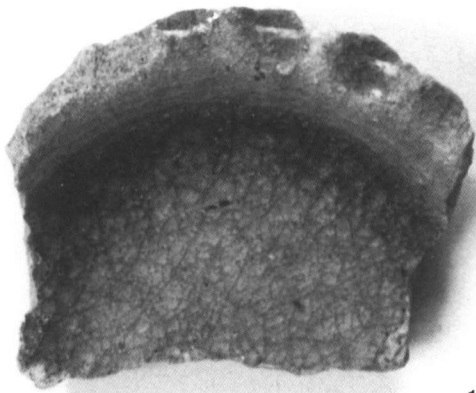
1745



878



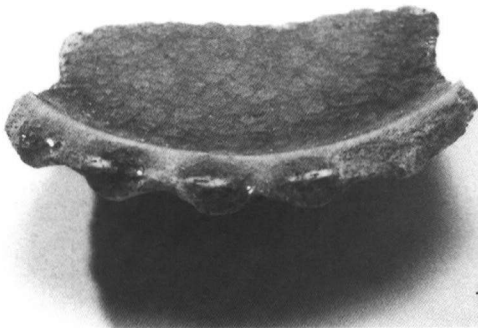
348



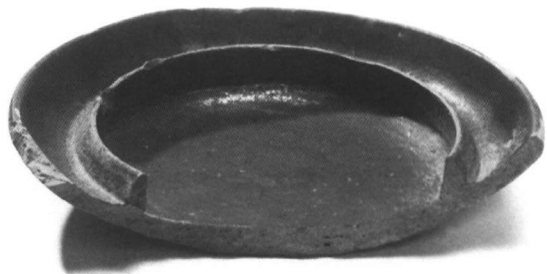
1732



1170



1732



1174



1732



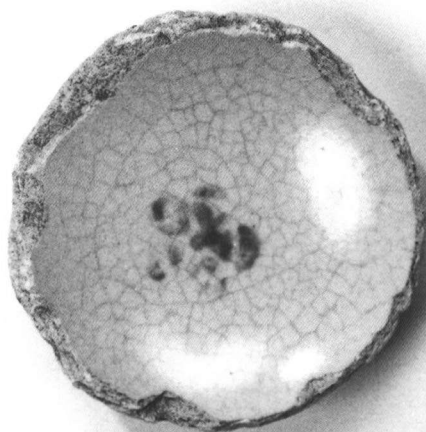
1024



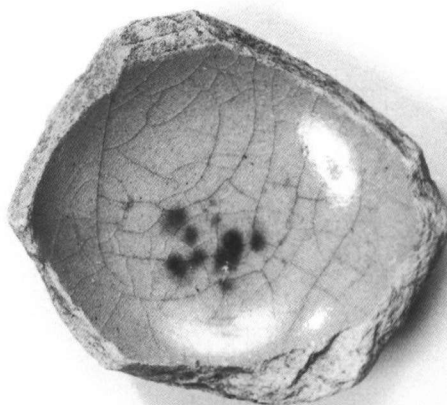
1260



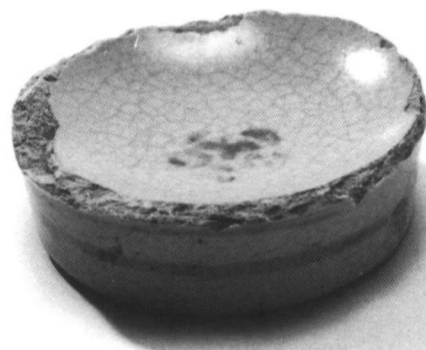
1258



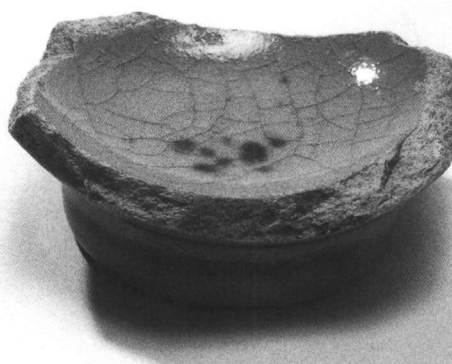
1287



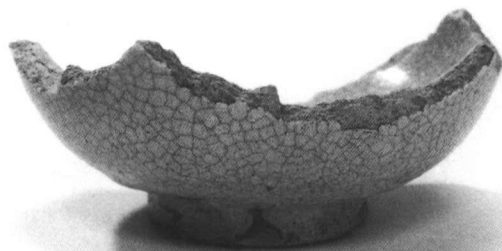
1286



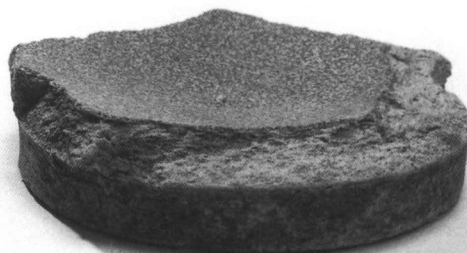
1287



1286



1245



1248



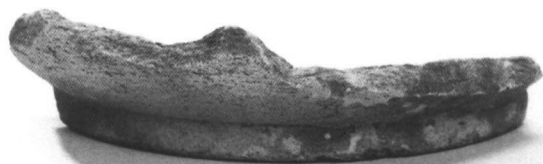
1245



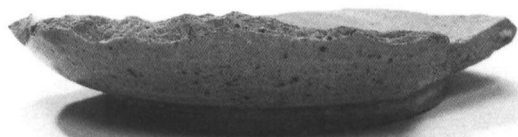
1248



1246



949



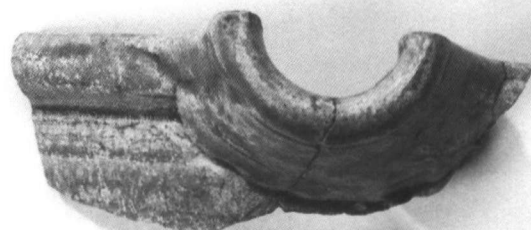
989



862



989



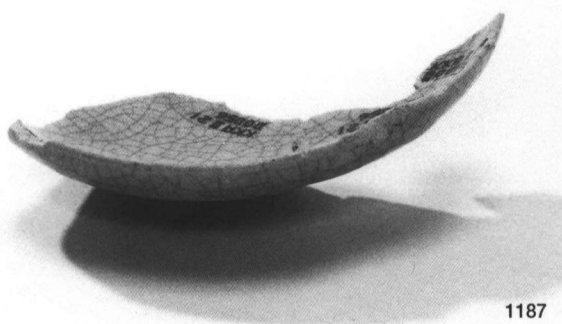
862



1340



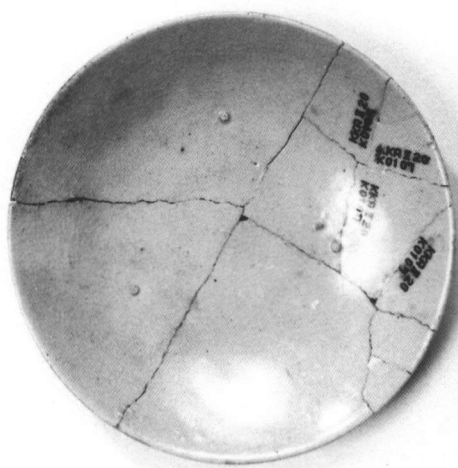
1690



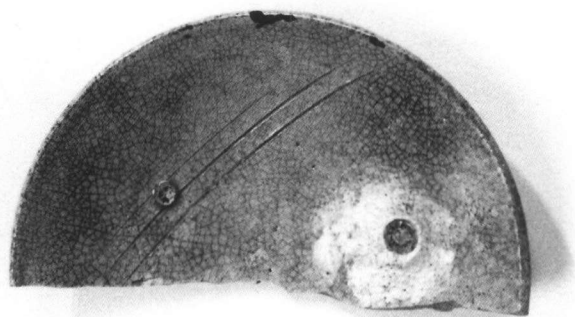
1187



1179



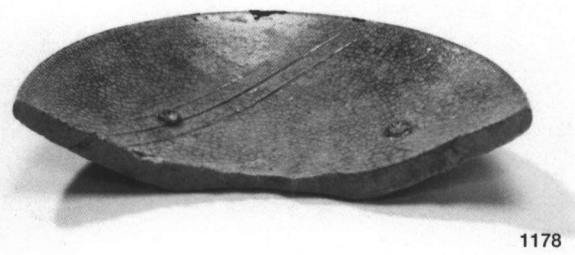
1045



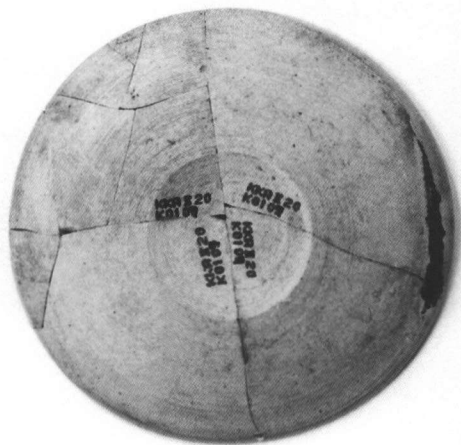
1178



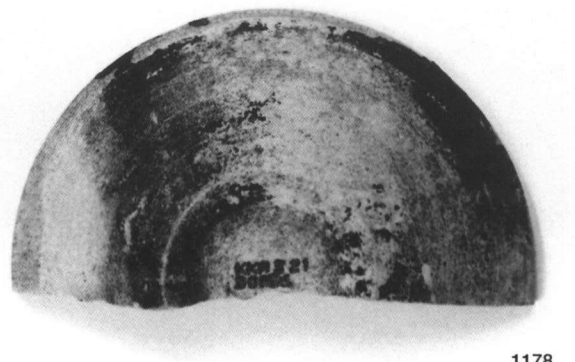
1045



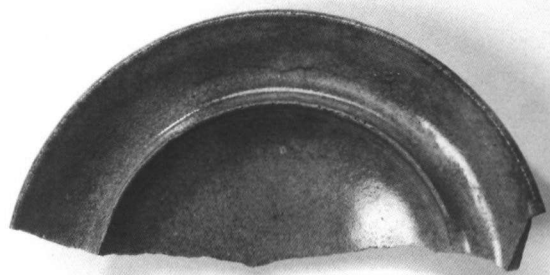
1178



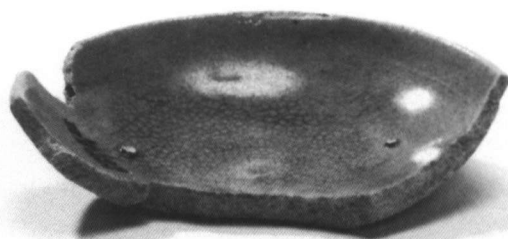
1045



1178



629



548



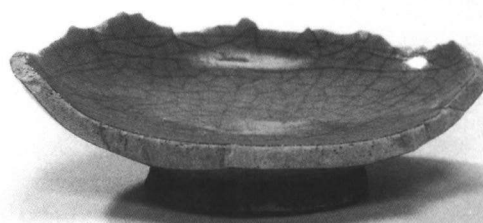
629



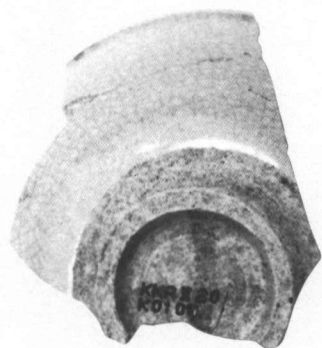
459



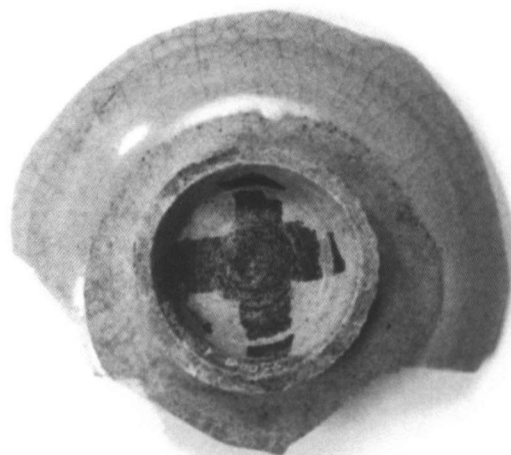
1044



1278



1044

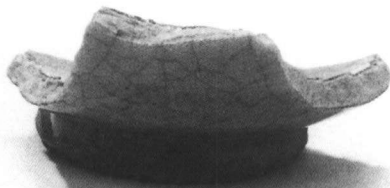


1278

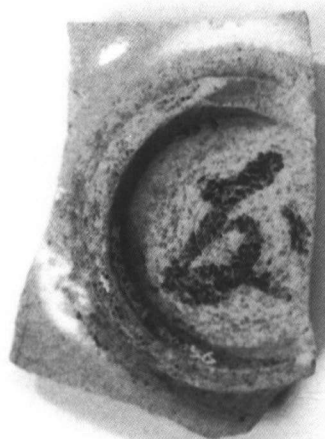




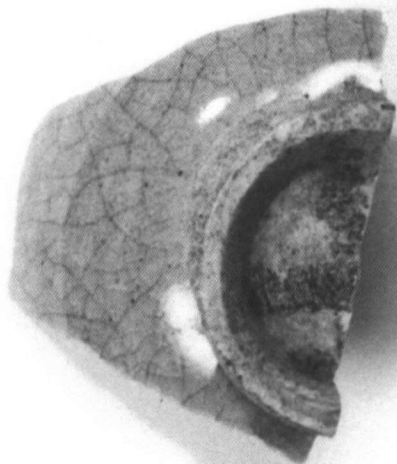
1279



1280



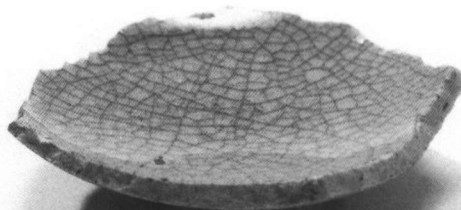
1279



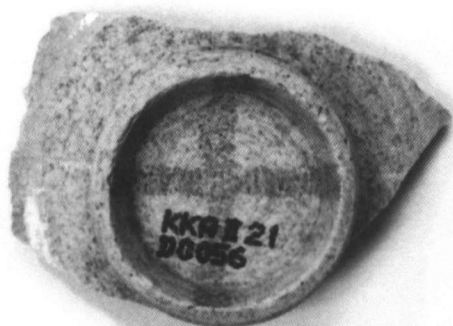
1280



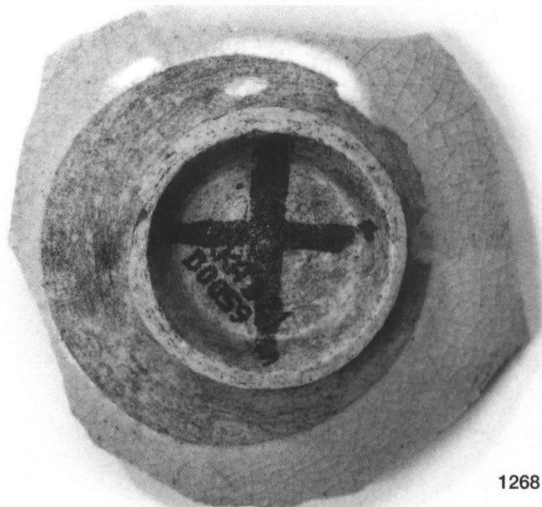
1274



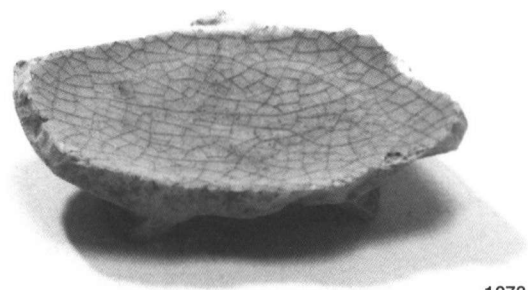
1268



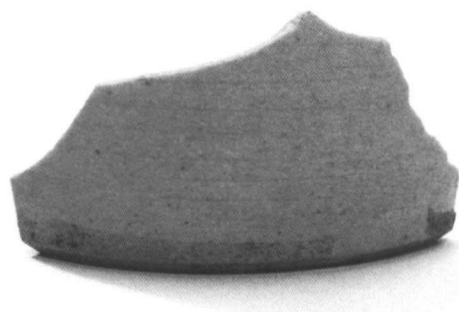
1274



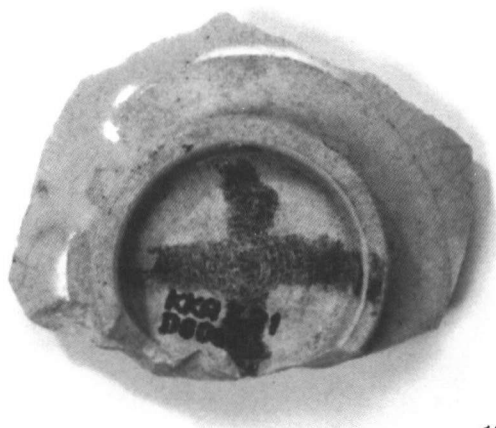
1268



1273



633



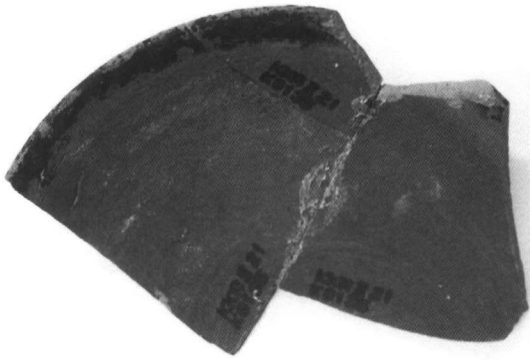
1273



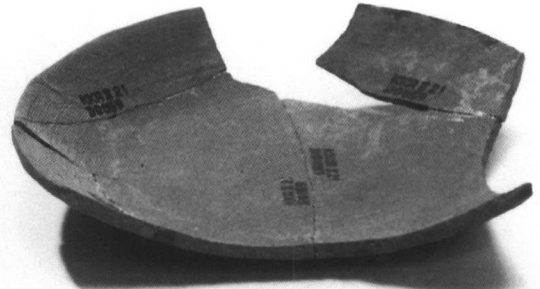
633



639



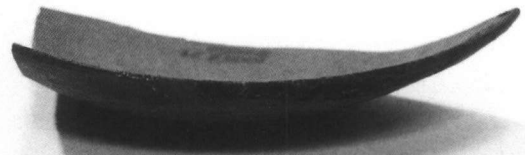
780



1176



780



1168



779



636



1320



1318



1422



1431

備前焼陶器 2



657



879



657



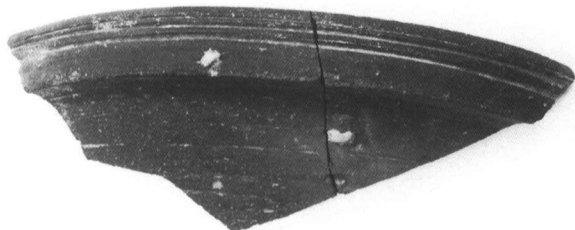
879



952



952



1417



1417



1683



749



1315



749



1302



1300



462



521

大谷烧陶器

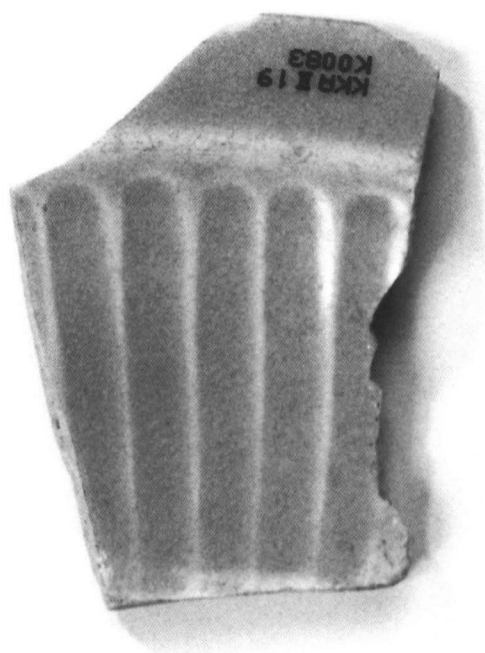


1262

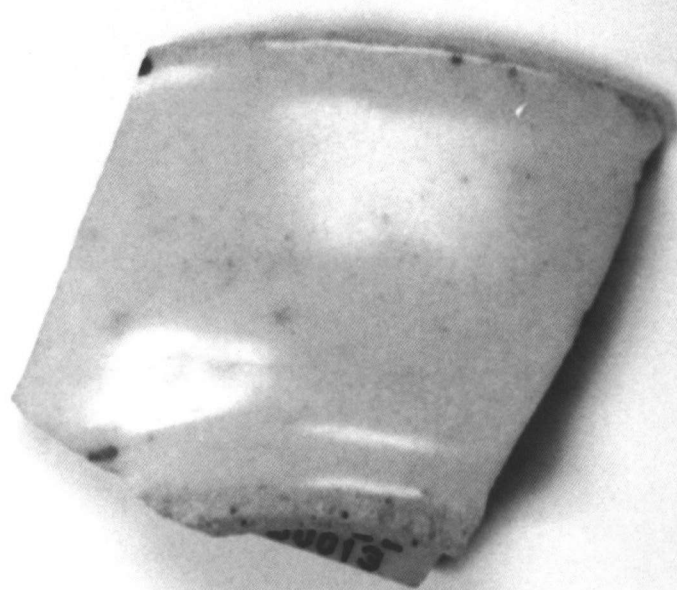


794

上：萩焼陶器  
下：丹波産陶器



605



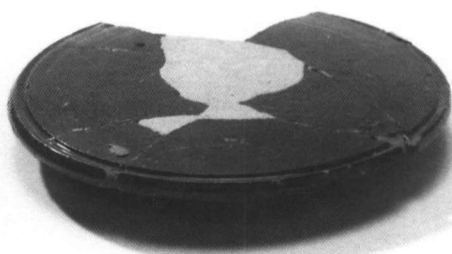
1075

上：波佐見窯系青磁  
下：中国産青磁





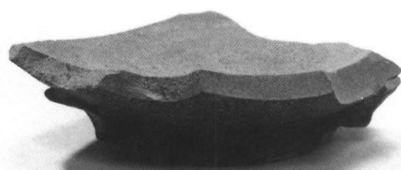
1602



631



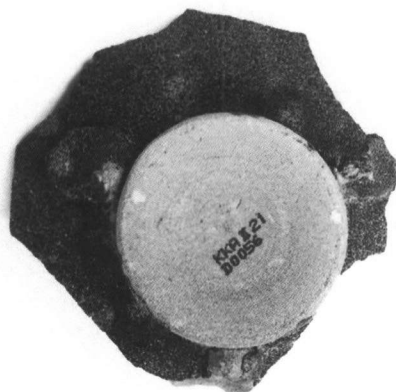
1321



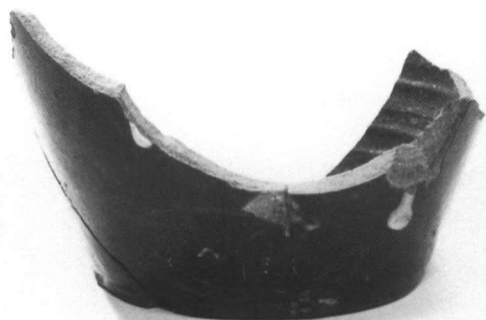
1313



519



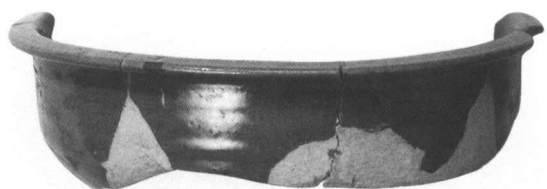
1313



518



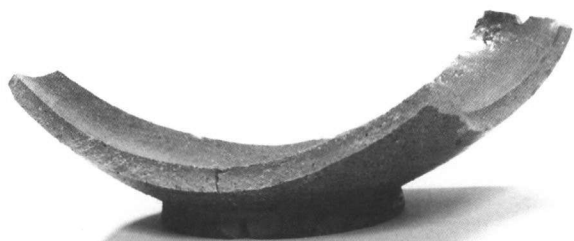
1065



1325



642



641



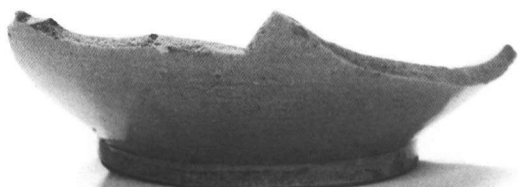
491



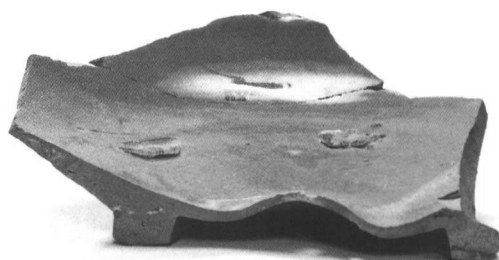
507



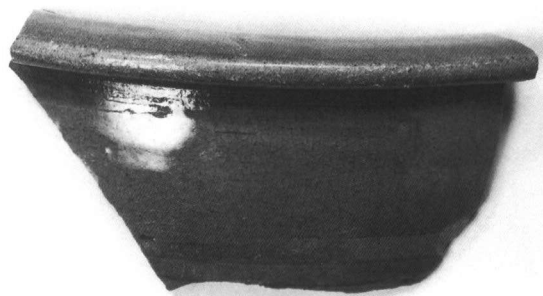
1846



1849



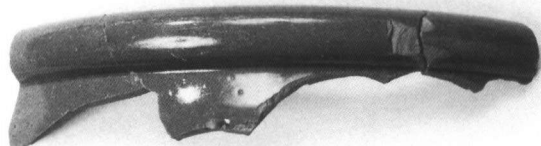
1849



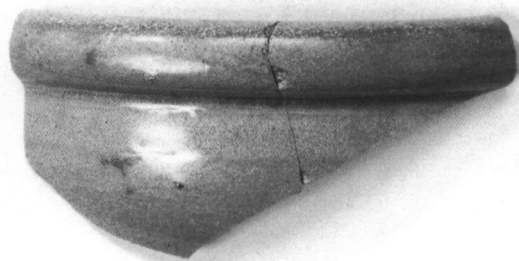
1848



1327



1424



1423



1425



1433



1604



943



401



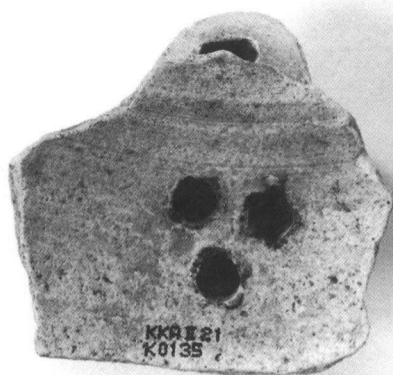
659



797



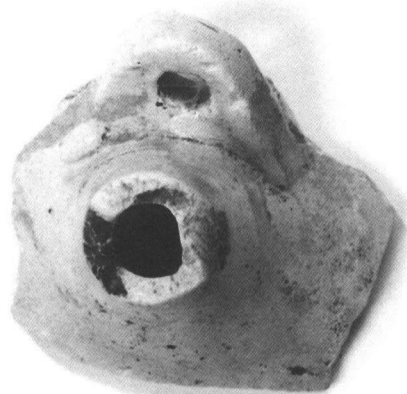
1603



868



868



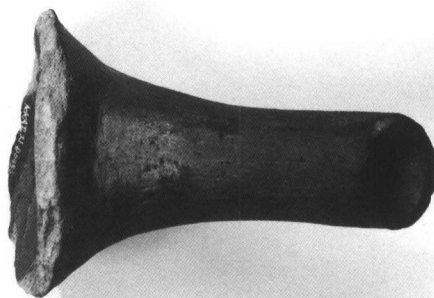
868



868



1481



1481



1481



1481



796



662



1446



662

上、中上、中下左：土瓶

中下右、下右：火消し壺

下左：さな



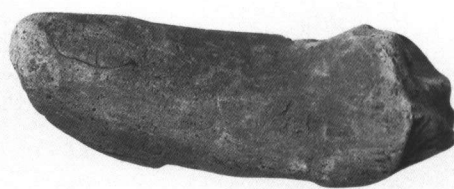
674



679



674



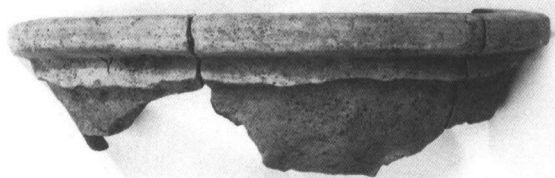
679



751



924

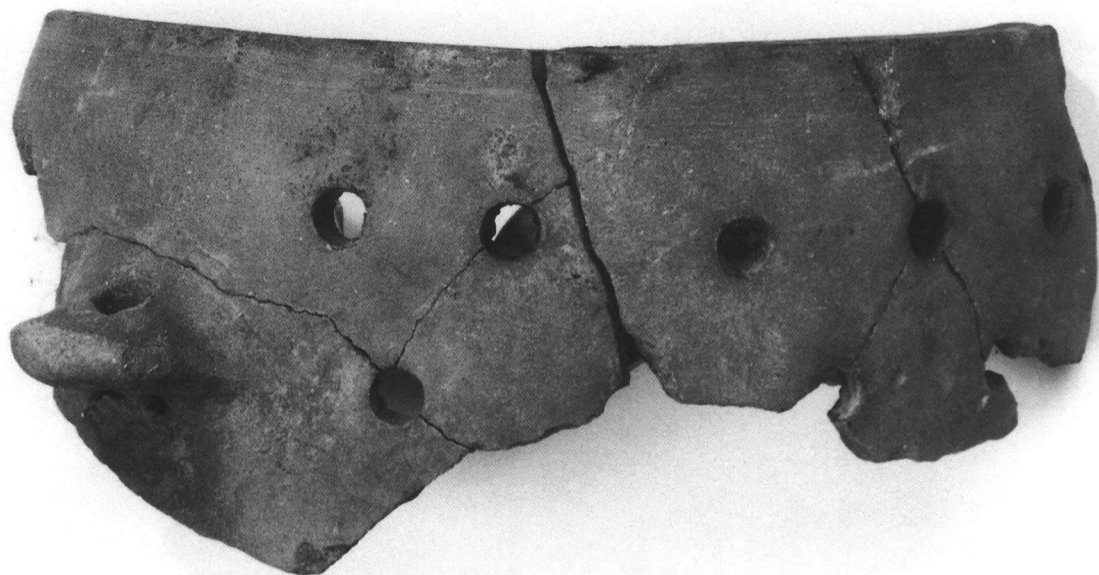


751



924

上、中上：十能  
中下、下：七厘



836



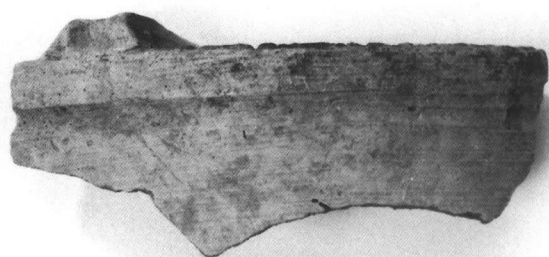
672



1760



672



1760

上：七厘  
中、下：火鉢1



1759



1444



675



416



675



1808



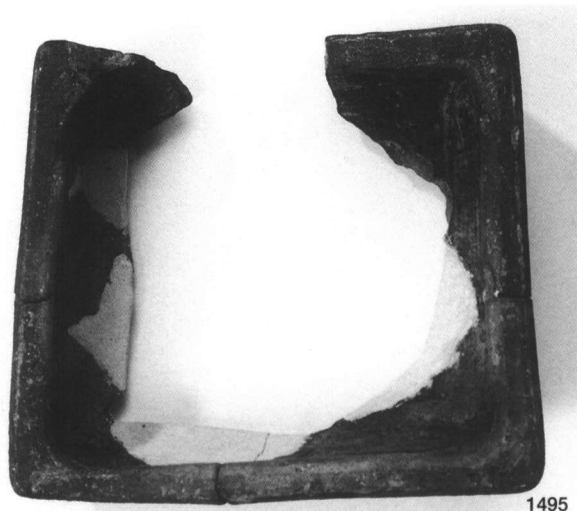
973



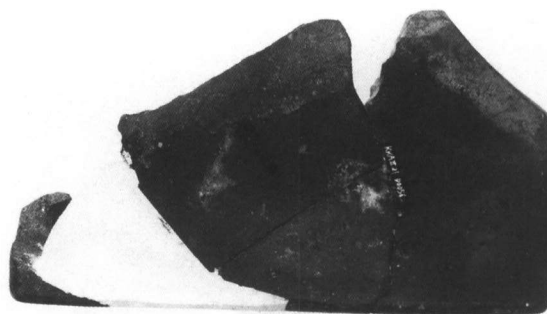
1434

火鉢 2

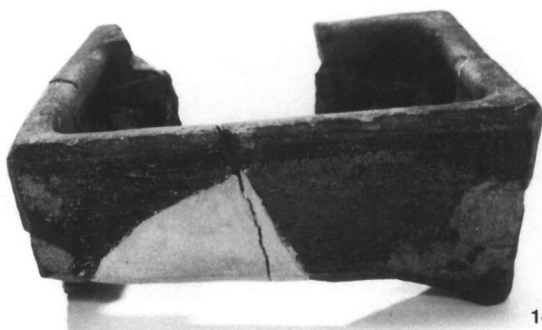




1495



1500



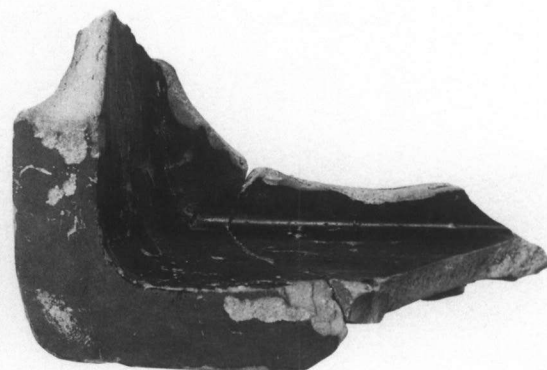
1495



1500



673



1498



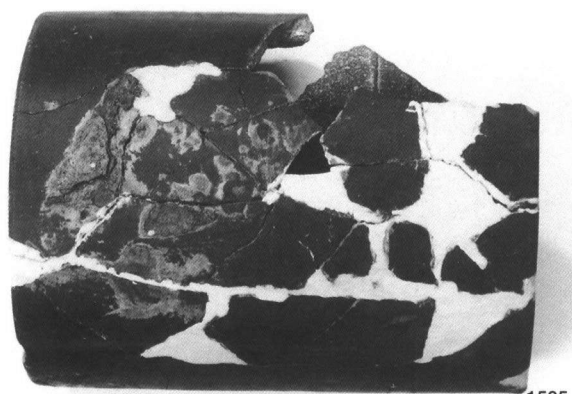
673



1498



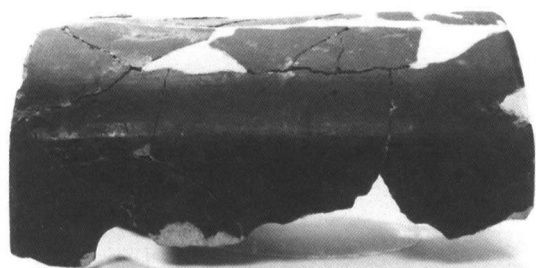
968



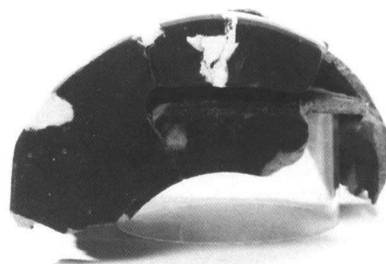
1505



671



1505



1505

上：竈  
 中右：不明1 中左、下：炬燵



510



510

不明 2



976



389



945



930



705



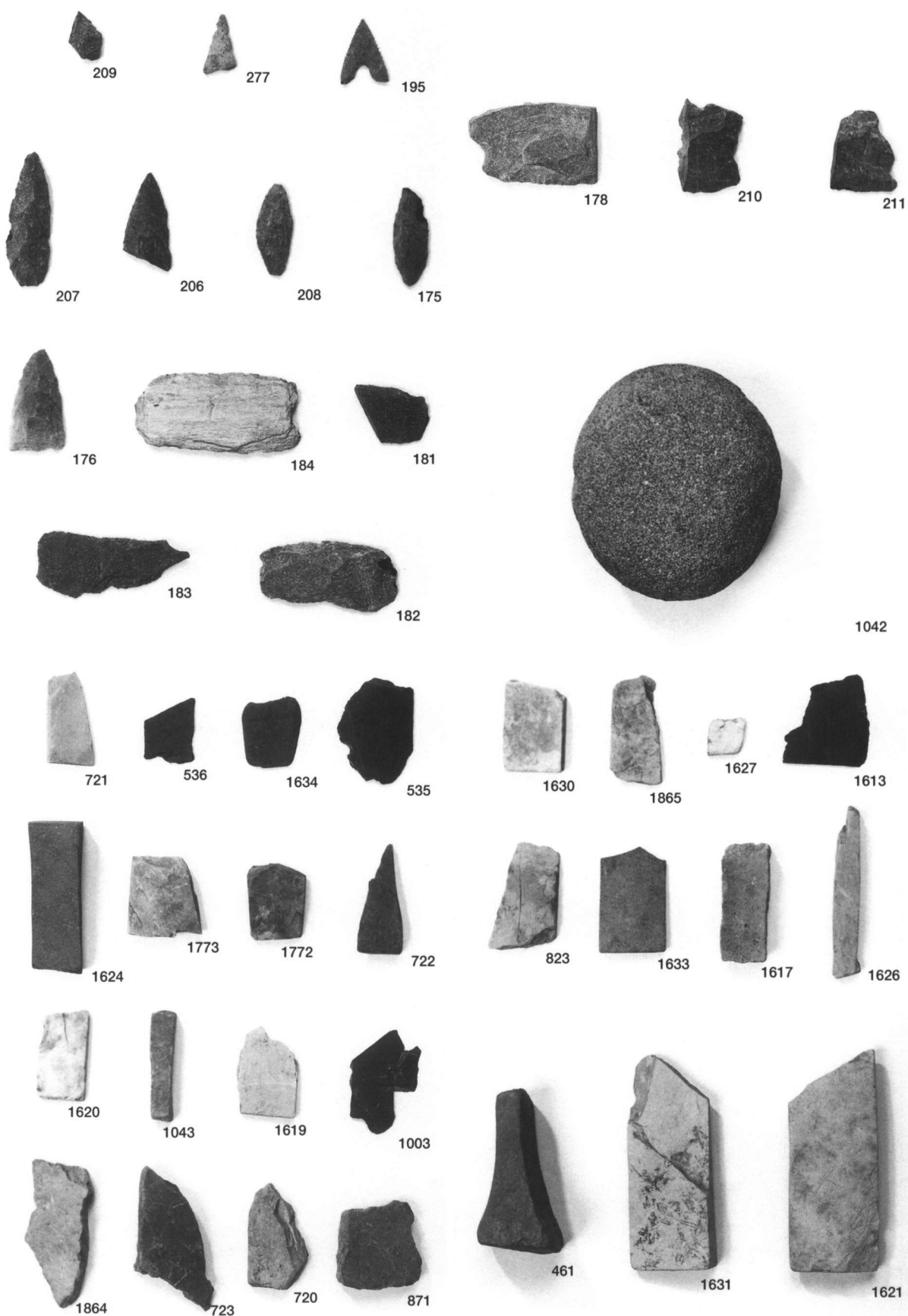
703

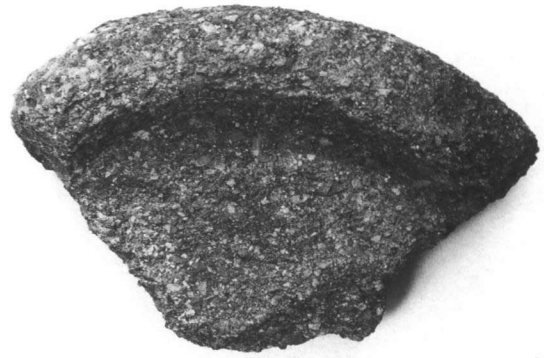
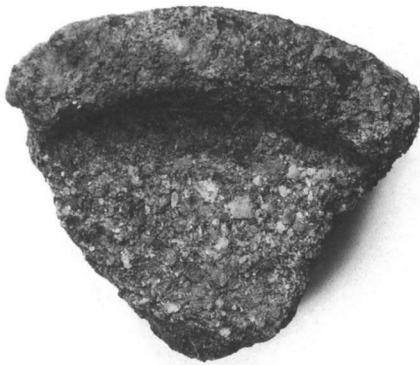
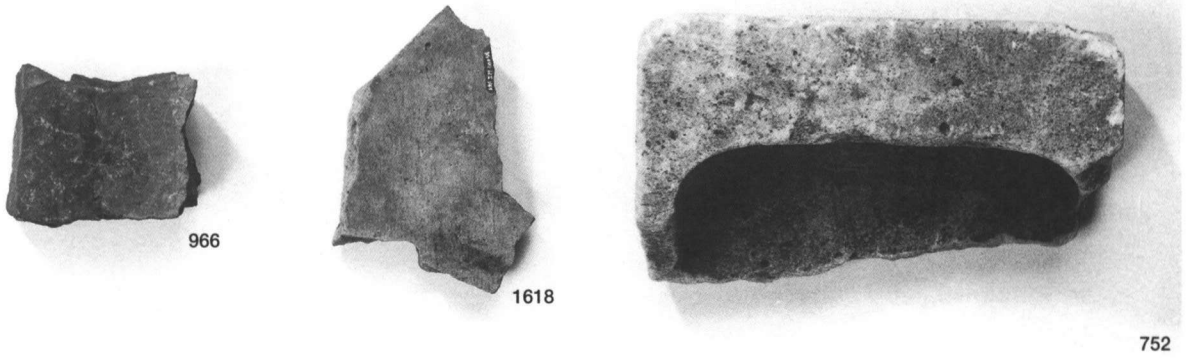
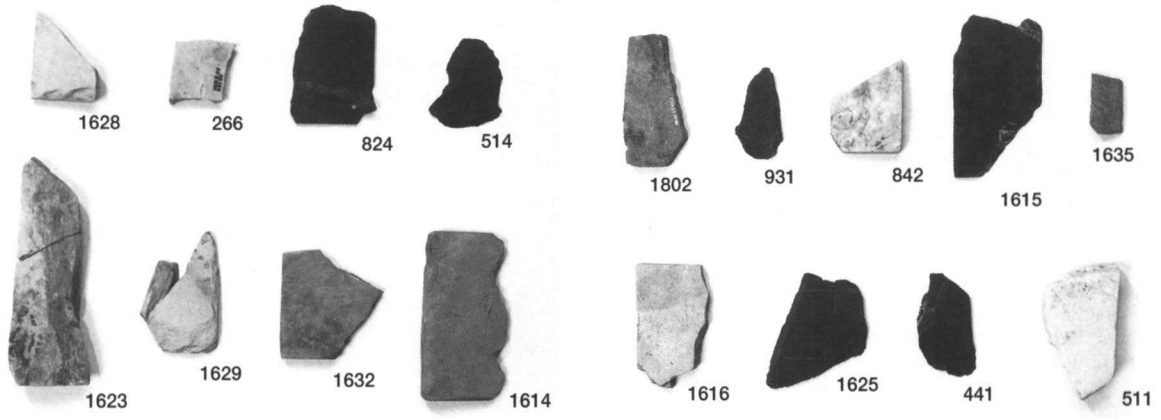


1015



1702







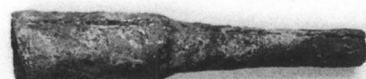
1646



1647



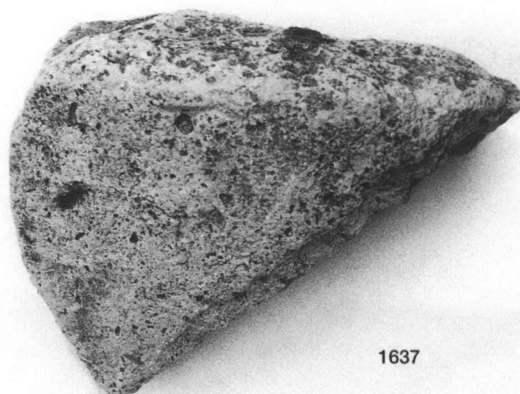
1646



1647



1638



1637

上：金属製品  
下：烧土

## 報告書抄録

ふりがな	くうこうあとちいせきⅦ							
書名	空港跡地遺跡Ⅶ							
副書名								
巻次								
シリーズ名	空港跡地整備事業に伴う埋蔵文化財発掘調査報告							
シリーズ番号	第7冊							
編著者名	西岡達哉							
編集機関	香川県埋蔵文化財センター							
所在地	〒762-0024 香川県坂出市府中町字南谷5001-4 TEL0877-48-2191							
発行機関	香川県教育委員会・香川県土地開発公社							
発行年月日	西暦 2004年10月29日							
総頁数	目次等	本文	観察表	図版	挿図枚数	写真枚数		
400P	14P	182P	122P	82P	144枚	478枚		
ふりがな 所収遺跡名	ふりがな 所在地	コード		北緯 ° ' "	東経 ° ' "	調査期間	調査面積 m <sup>2</sup>	調査原因
		市町名	遺跡番号					
くうこうあとちいせき 空港跡地遺跡	なかつしほやしちよう 高松市林町	37201		34度 11分 29秒	134度 4分 30秒	平成3年 ・ 平成5年	12,567	空港跡地整備
所収遺跡名	種別	主な時代	主な遺構		主な遺物		特記事項	
空港跡地遺跡	集落	弥生時代	掘立柱建物跡		弥生土器（壺、甕、高杯）、石器（石鏃、石庖丁）			
		平安時代	井戸跡					
		鎌倉時代	掘立柱建物跡、土坑		土師器			
		江戸時代	掘立柱建物跡、溝		陶磁器			



空港跡地整備事業に伴う  
埋蔵文化財発掘調査報告

第7冊

空港跡地遺跡Ⅶ

平成16年10月29日 発行

編集 香川県埋蔵文化財センター

〒762-0024 香川県坂出市府中町字南谷5001番地の4

電話 (0877) 48-2191

F A X (0877) 48-3249

発行 香川県教育委員会

香川県土地開発公社

印刷 タナカ印刷株式会社

