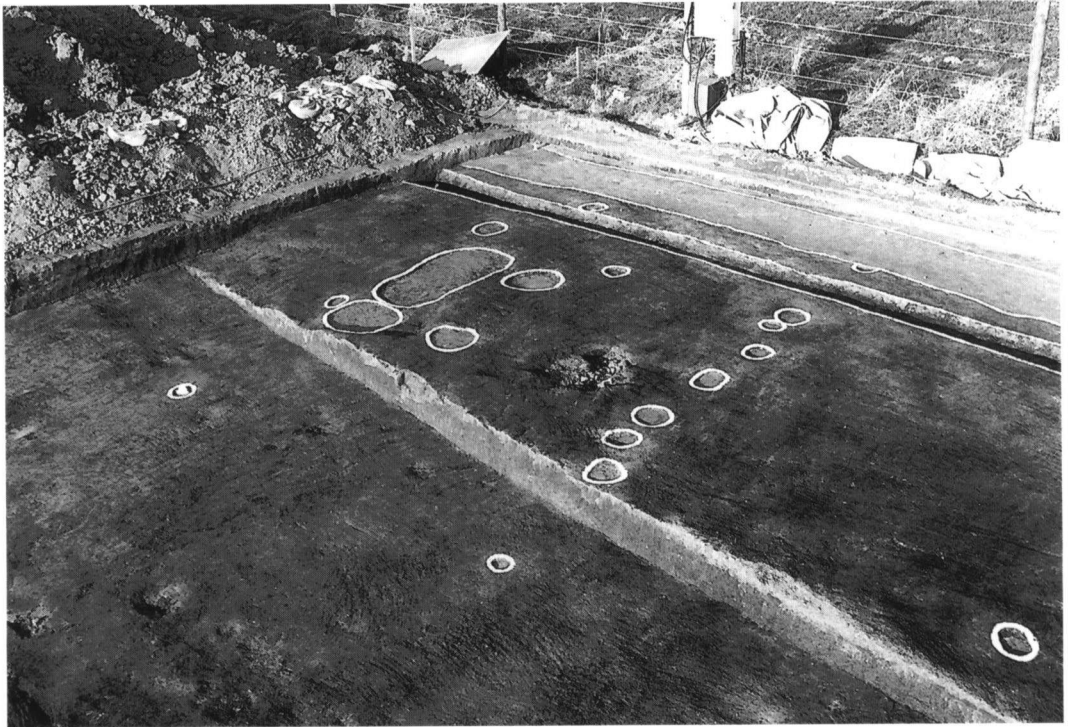
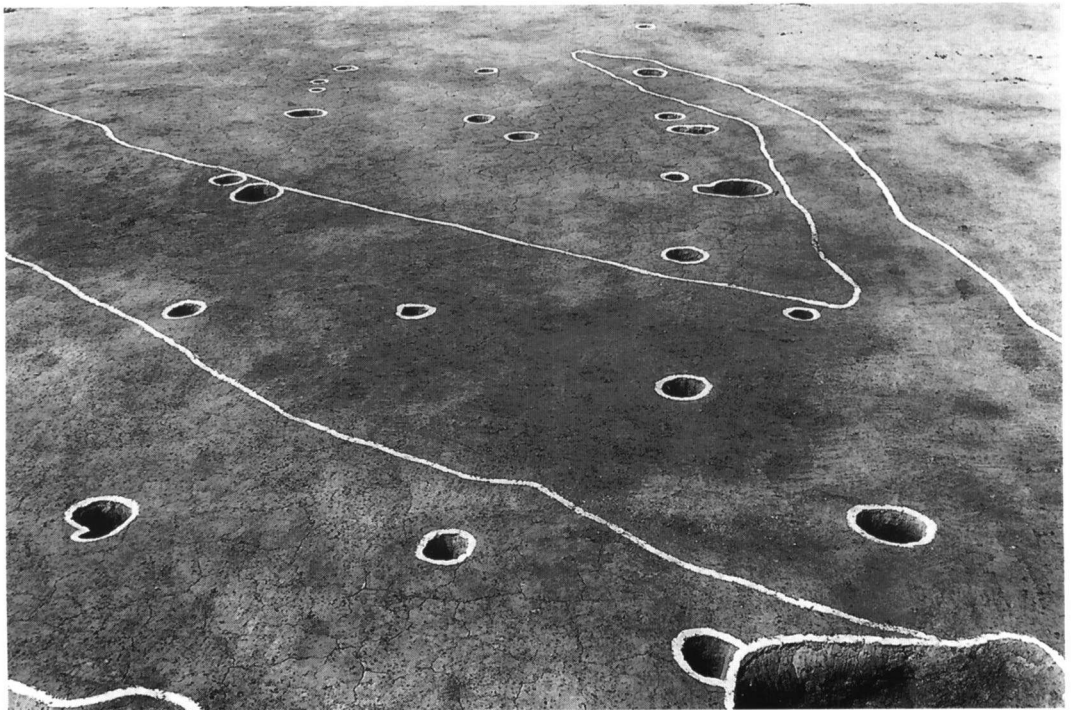


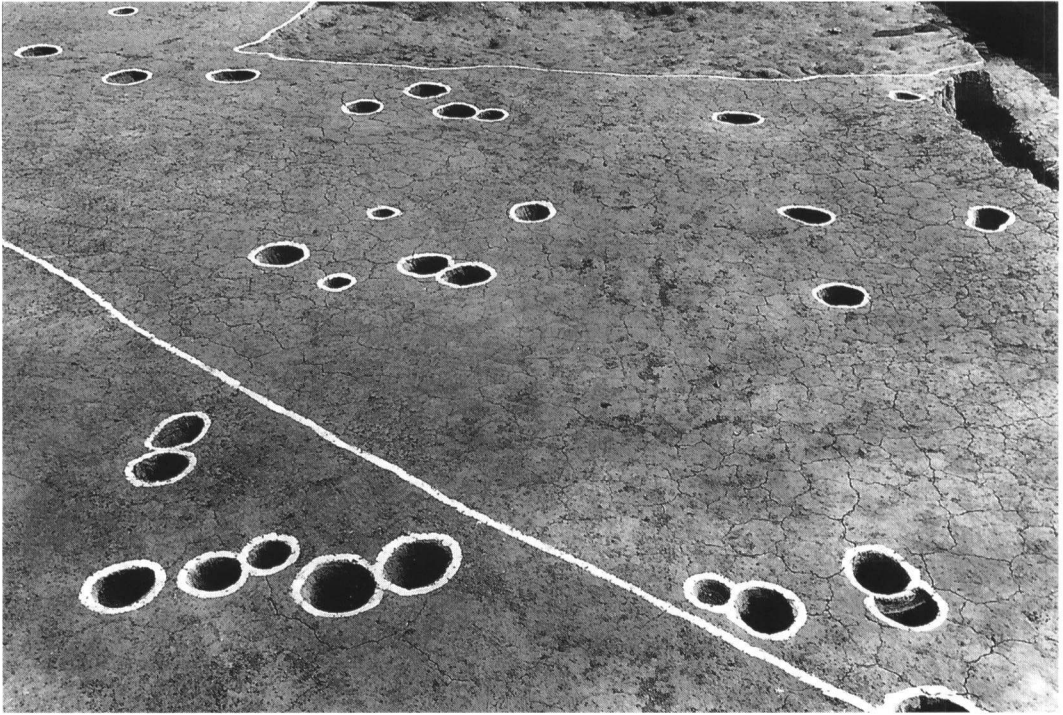
図版 20



O, P-41, 42区 S B04 掘削状況 (南から)



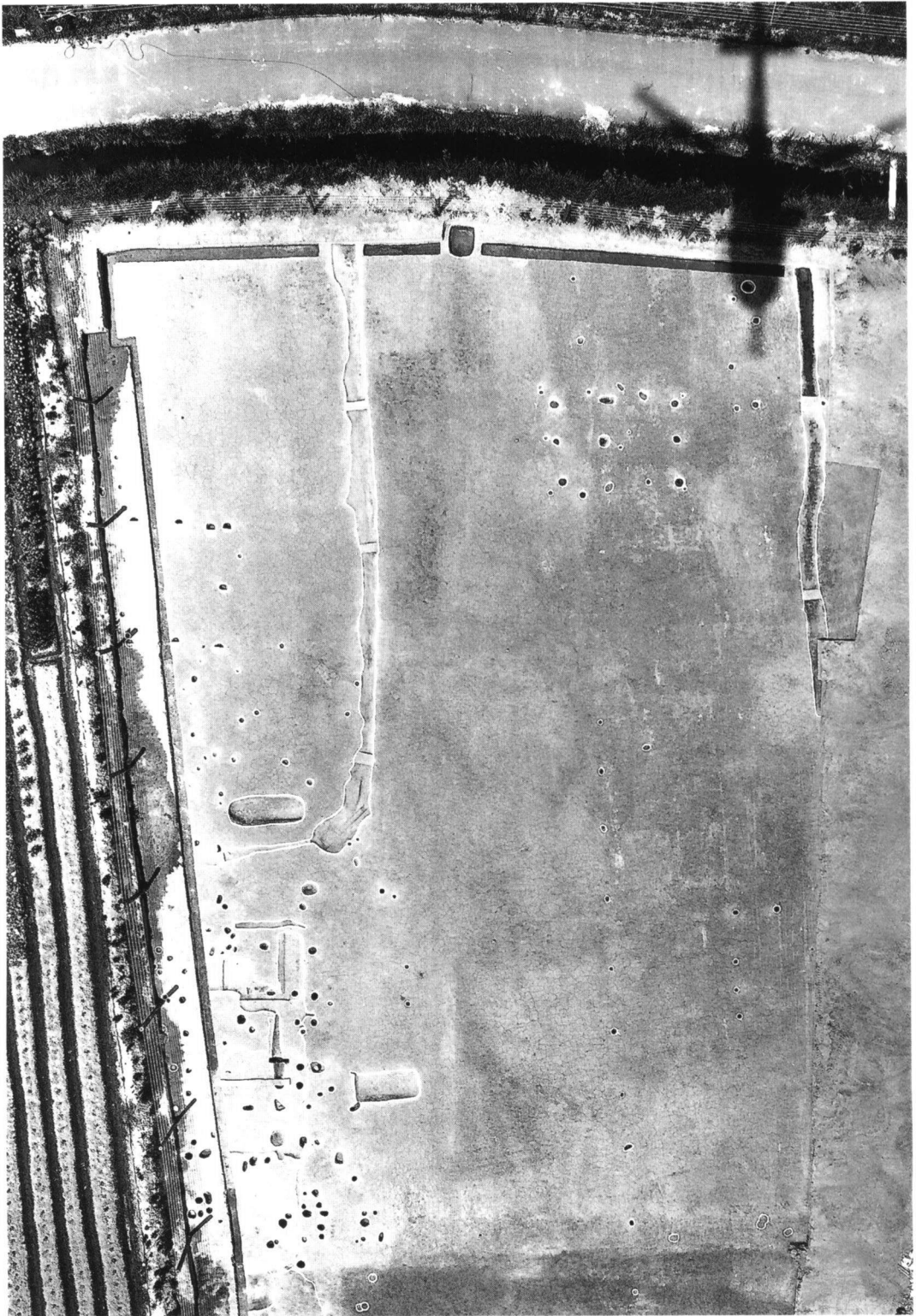
N-39~42区 S B05・06 掘削状況 (南から)



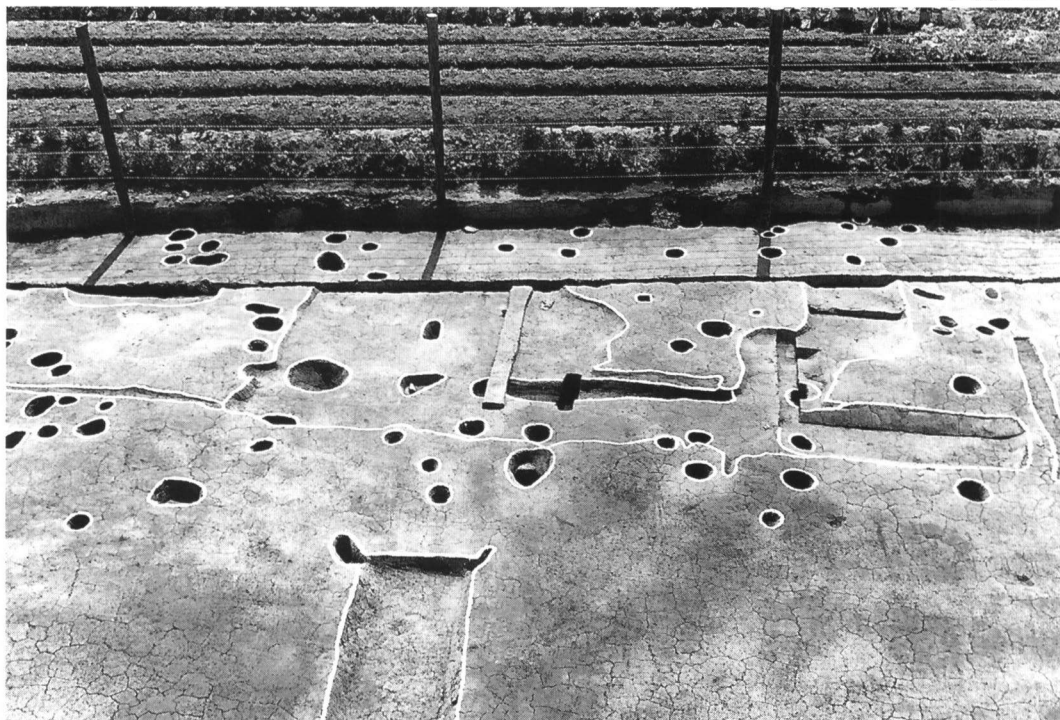
N-39~42区 S B07 掘削状況 (北から)



N-39~42区 S P202 遺物(444)出土状況



N-39~42区 (北部) 上層 空中写真 (上が北)

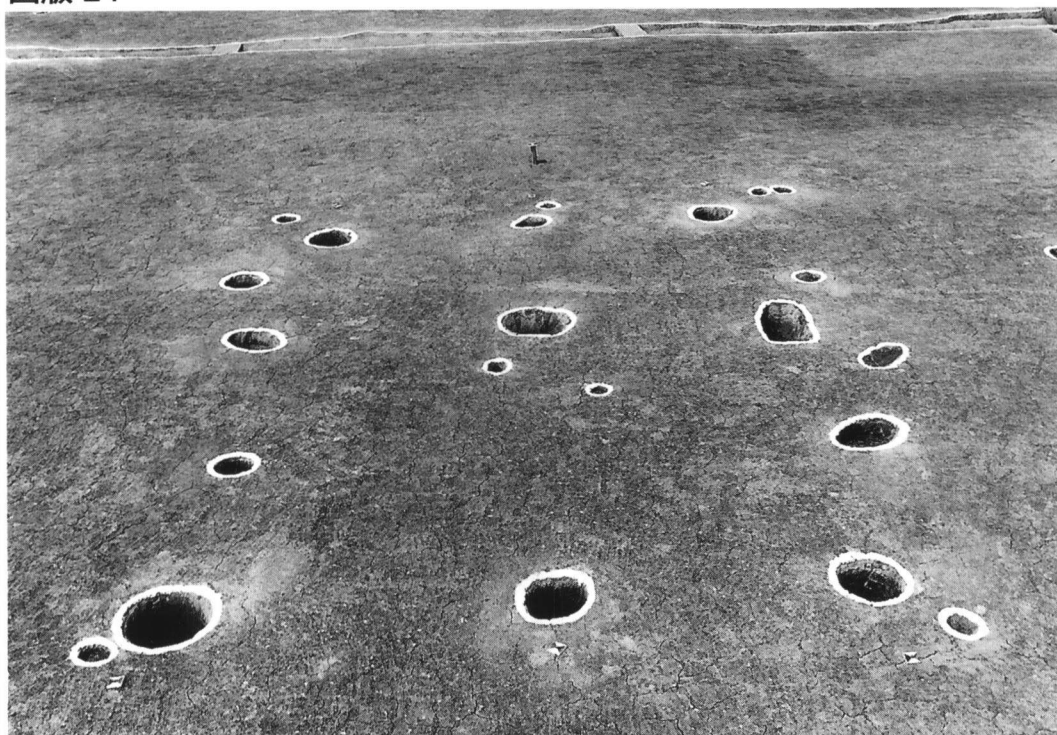


N-39~42区 S B08付近 掘削状況 (東から)

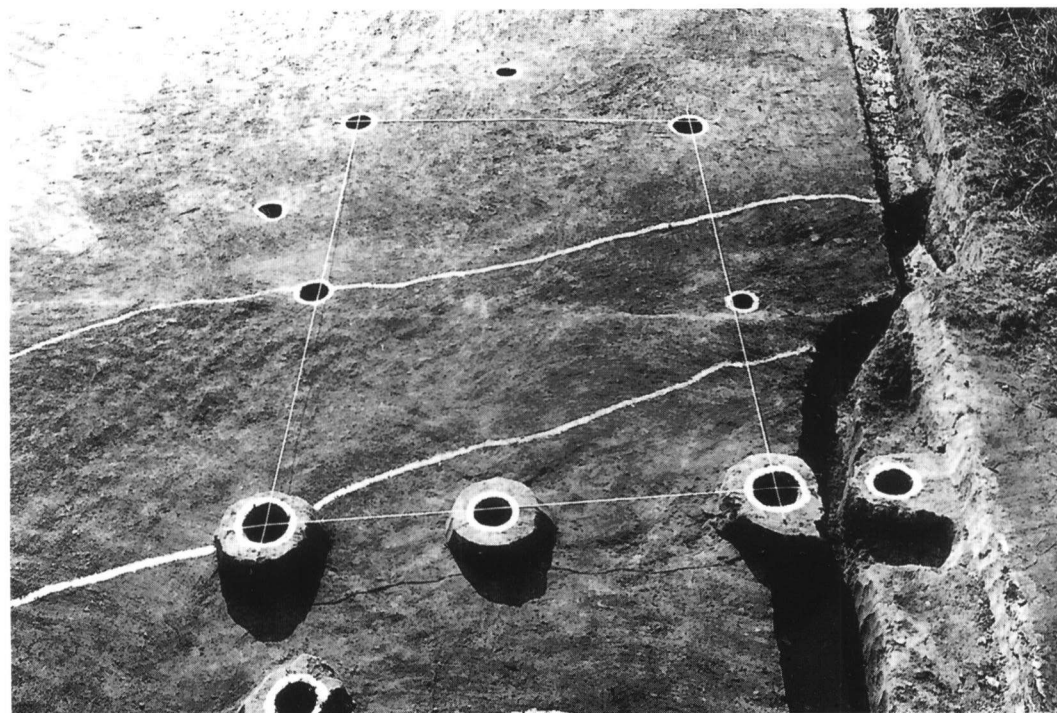


N-39~42区 S B09 掘削状況 (東から)

図版 24



N-39~42区 S B10 掘削状況 (東から)



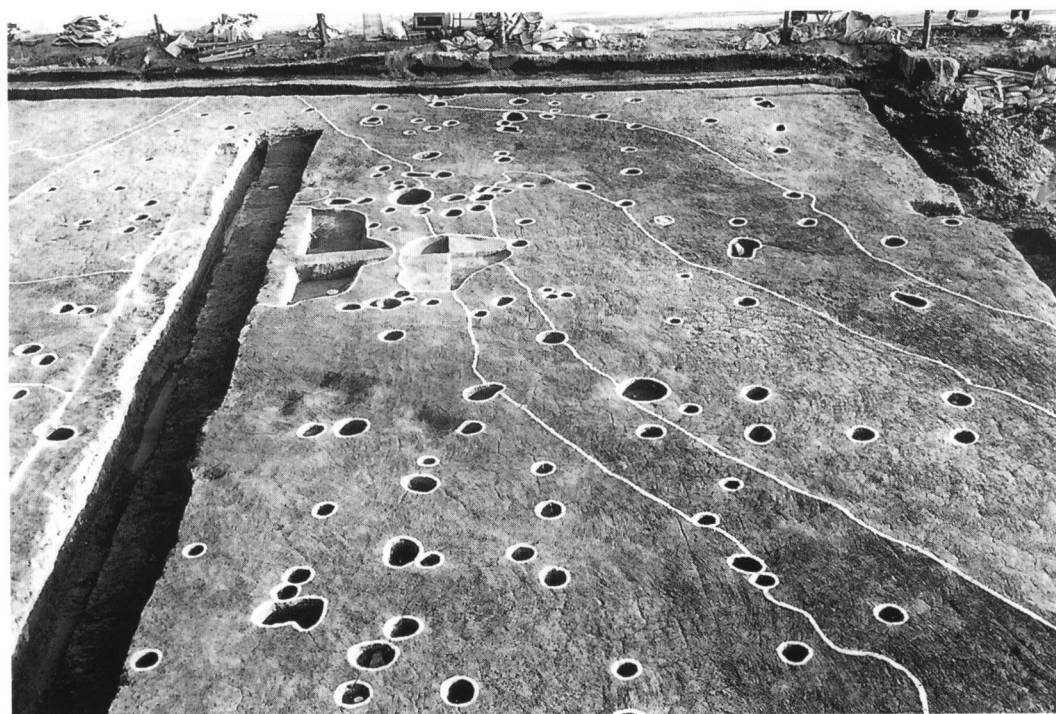
N-39~42・O-39,40区 S B11 掘削状況 (東から)



O-37,38区 遺構検出時 空中写真 (上が北)



O-37,38 遺構検出状況 (西から)



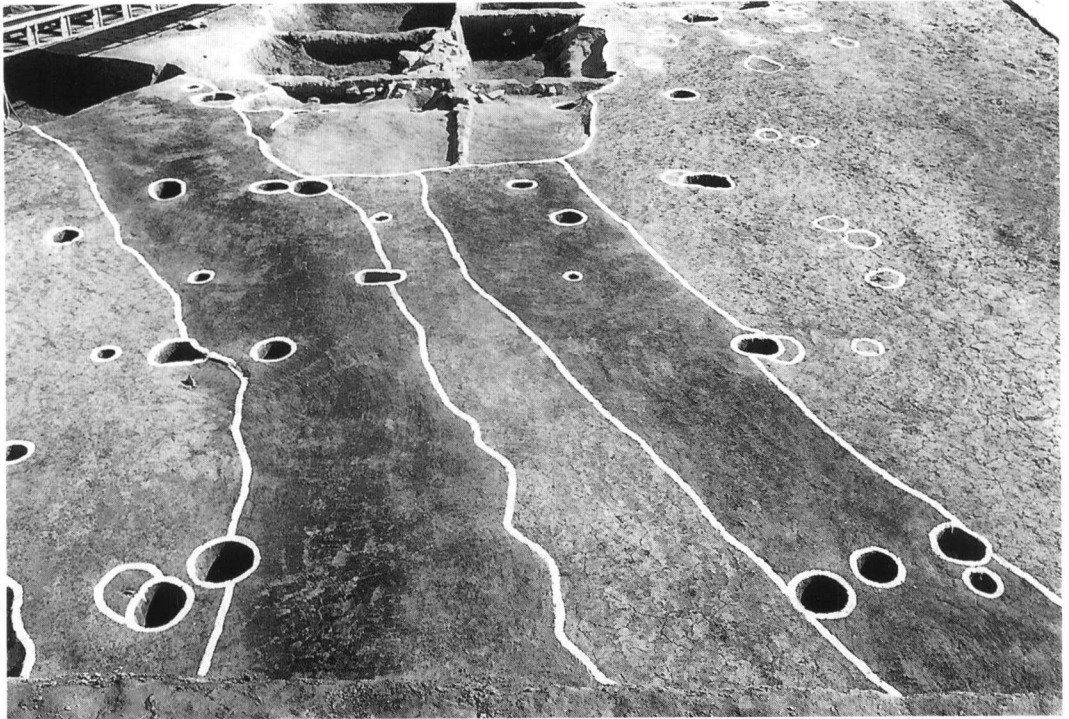
O-37,38区 上層遺構 掘削状況 (北から)



N-37,38区 上層 空中写真 (上が北)



図版 28



N-37,38区 S B17・20 掘削状況 (北から)



N-37,38区 S B18等 掘削状況 (北から)



N-37,38区 S B18 掘削状況 (東北から)



N-37,38区 S P682 遺物(488)出土状況

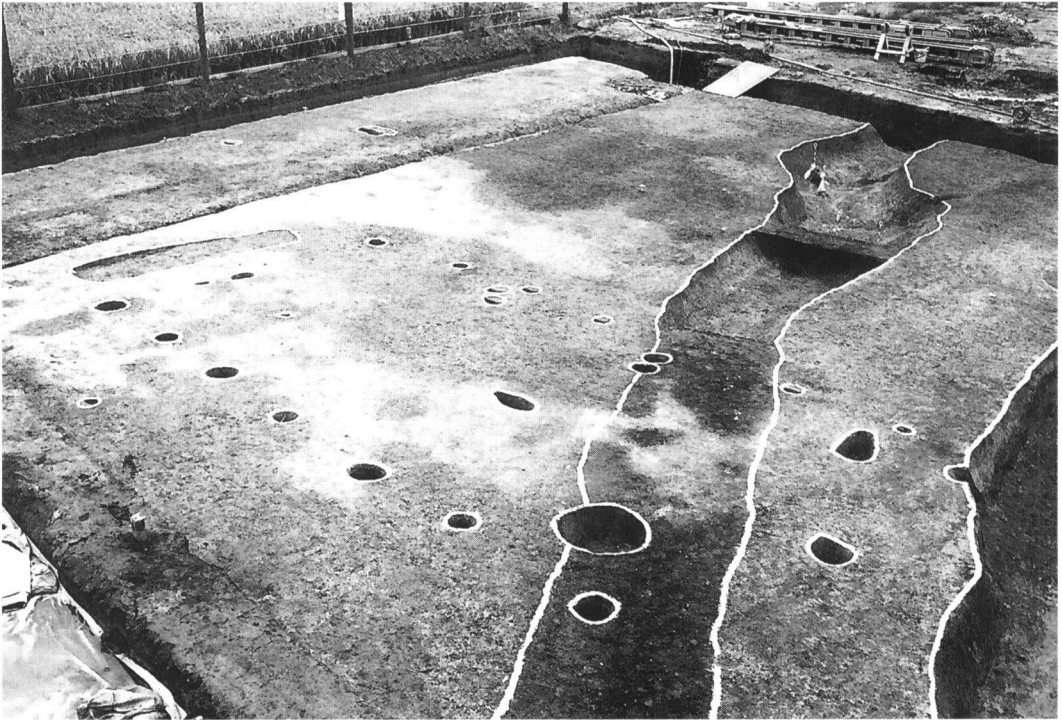
图版 30



N-37,38区 S P659 遺物(492)出土状況



N-37,38区 S K19 掘削状況

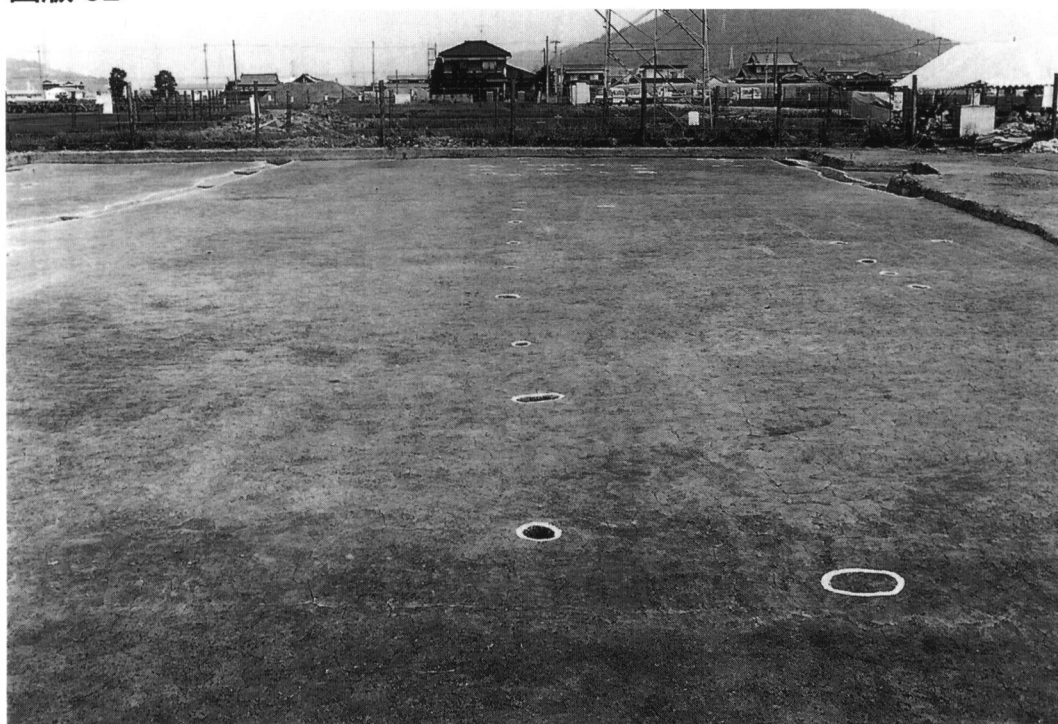


N-37,38区 S B19 掘削状況 (南東から)

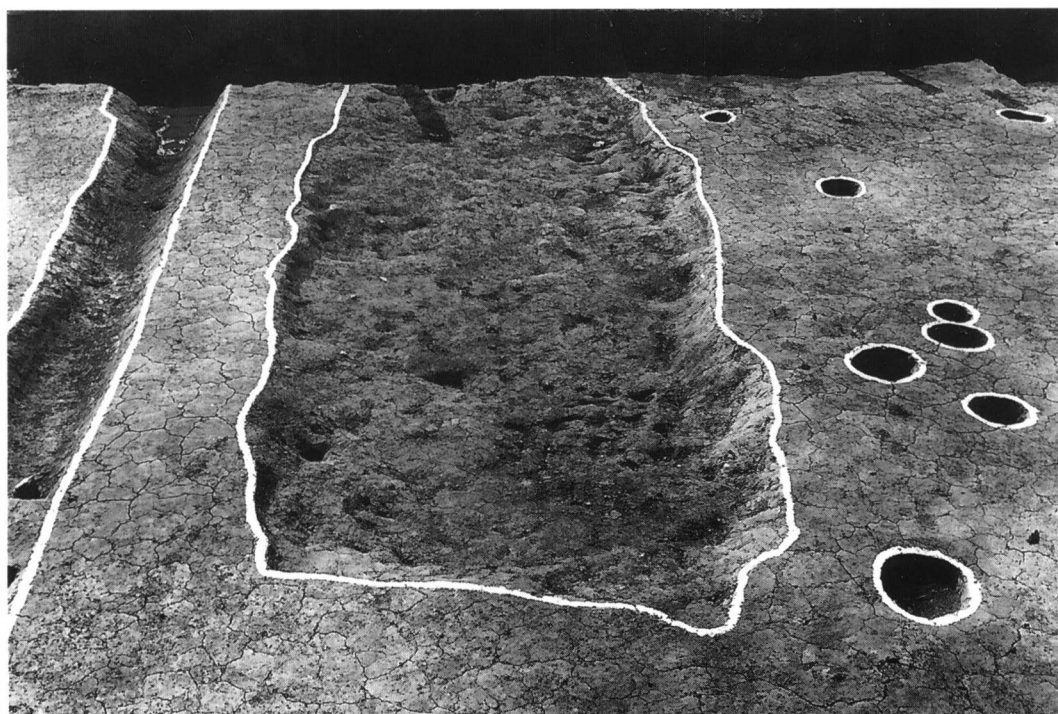


N-37,38区 S P657 掘削状況

図版 32



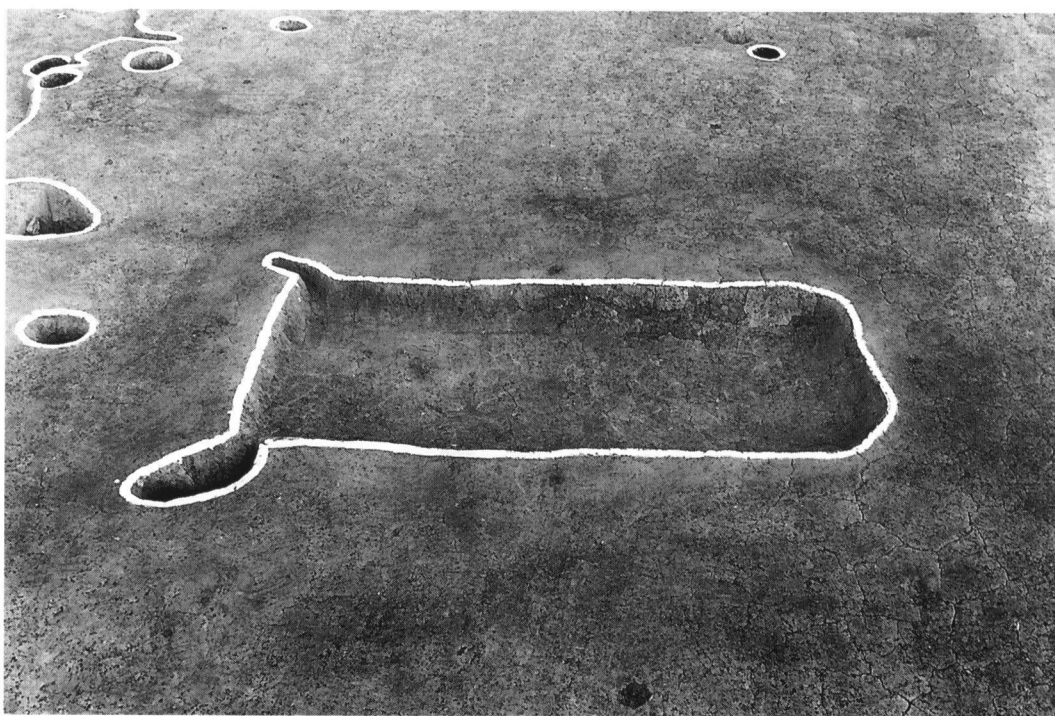
N-39~42区 SA01 (南から)



N-39~42区 SK05 掘削状況 (東から)



N-39~42区 SX08 掘削状況 (東から)



N-39~42区 SK06 掘削状況 (南から)

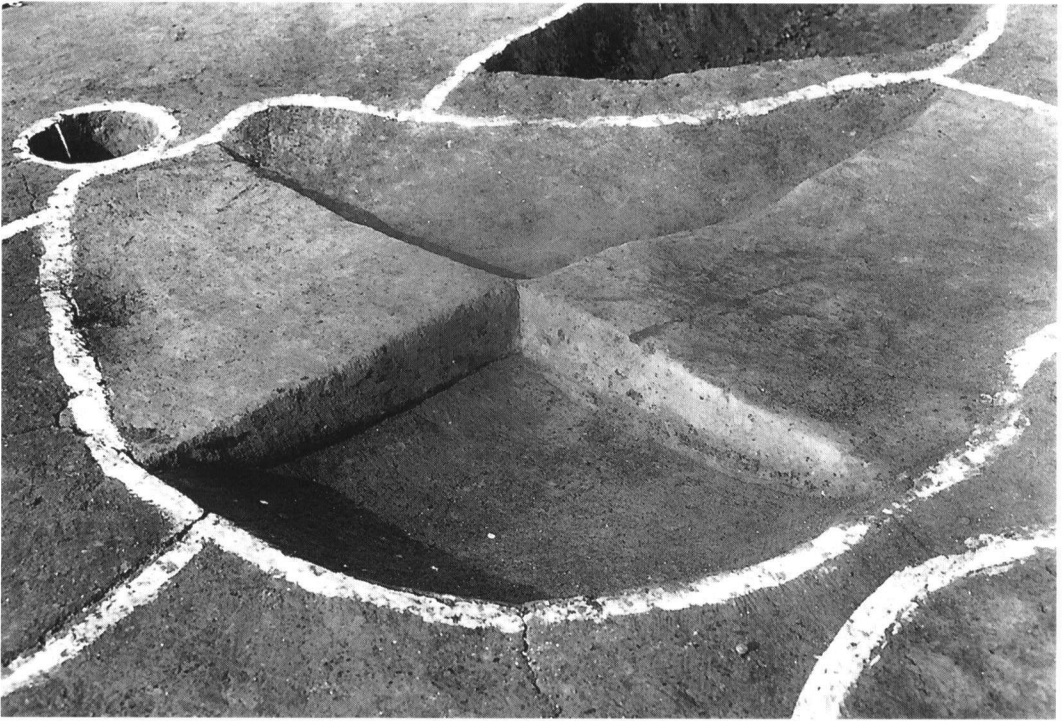
図版 34



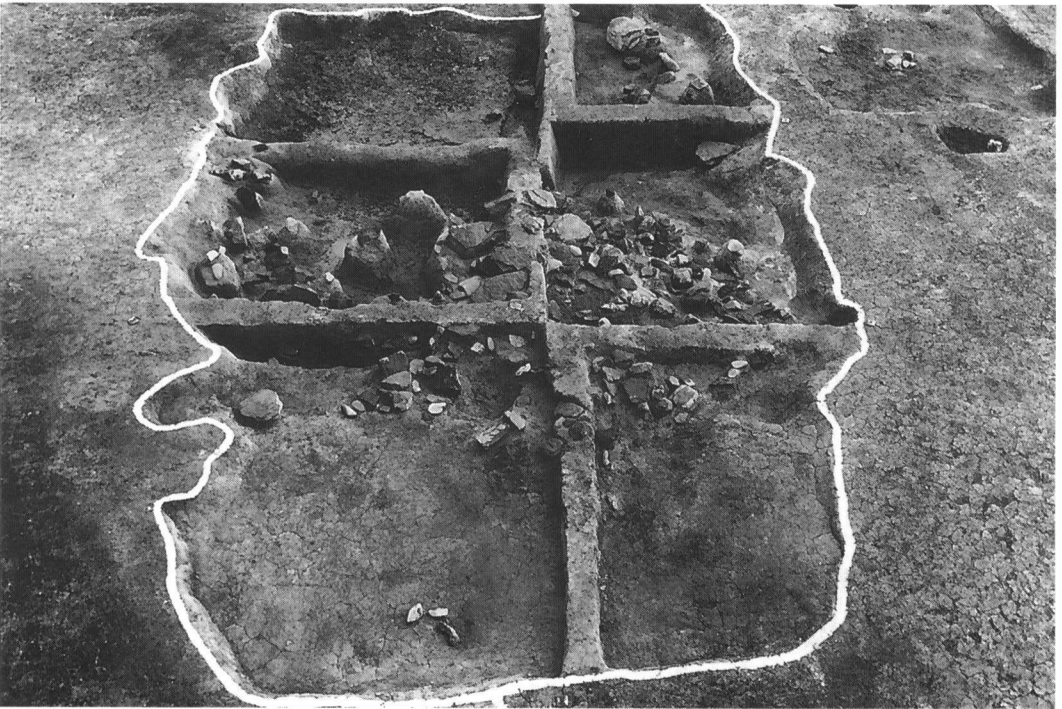
N-39~42区 SK08 掘削状況 (東から)



O-37,38区 SK09 掘削状況 (南東から)



O-37,38区 SK10 掘削状況



N-37,38区 SK13 掘削状況 (北から)

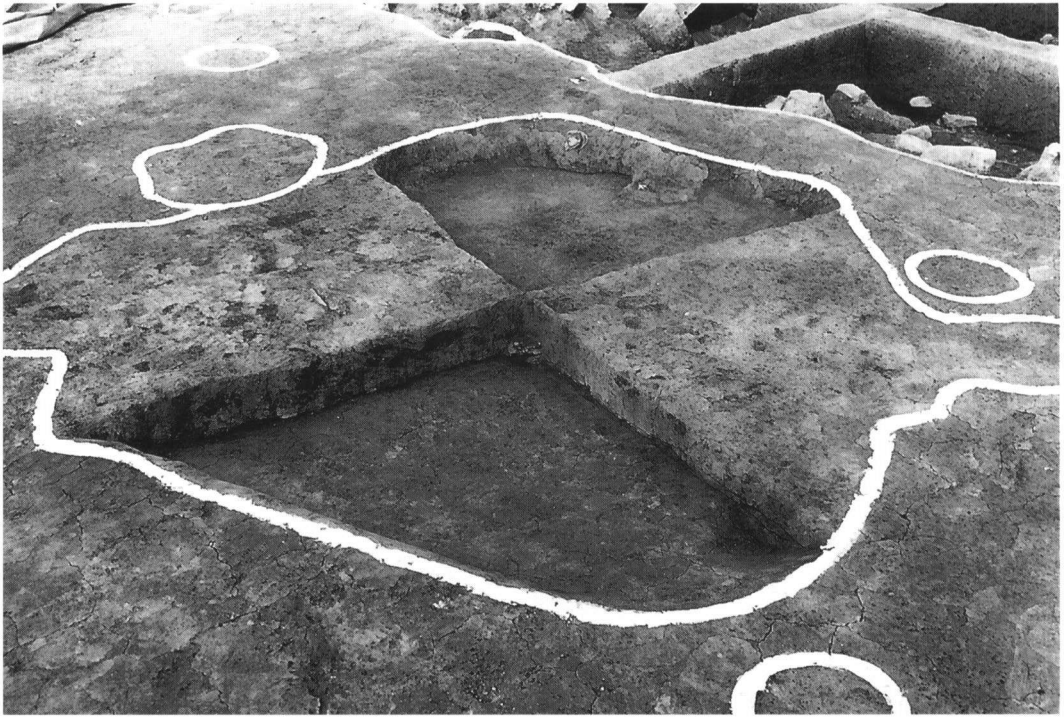




N-37,38区 SK13 遺物(551)出土状況



N-37,38区 SK13 完掘状況 (北から)

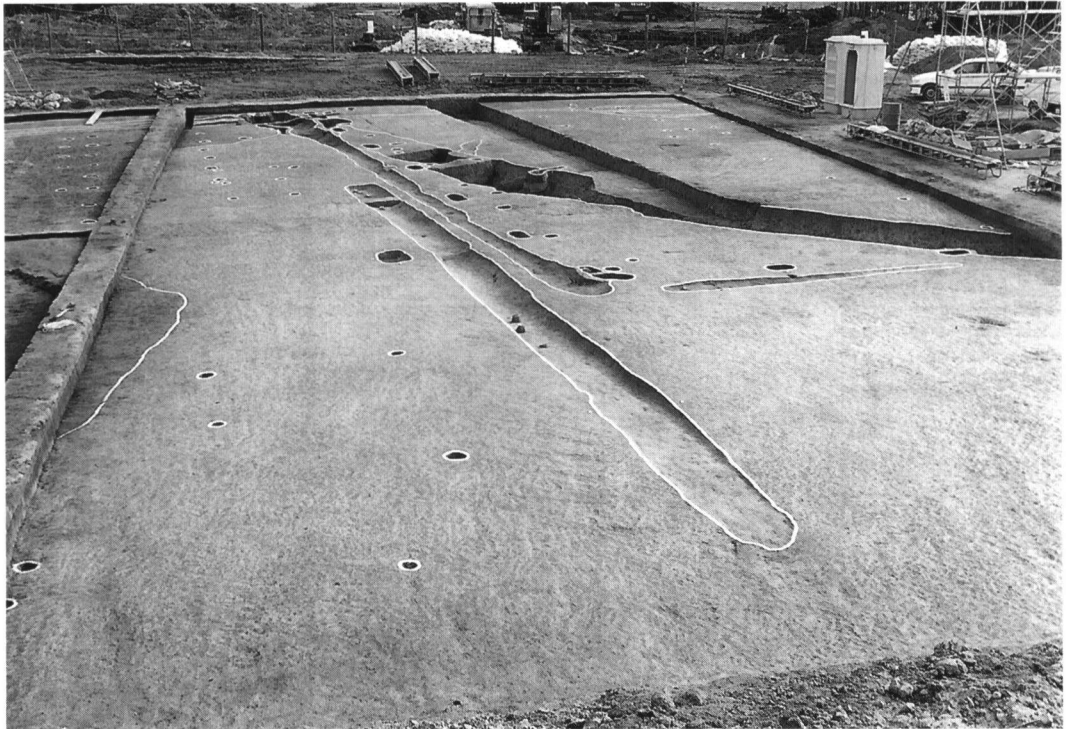


N-37,38区 SK14 掘削状況 (南から)



作業風景

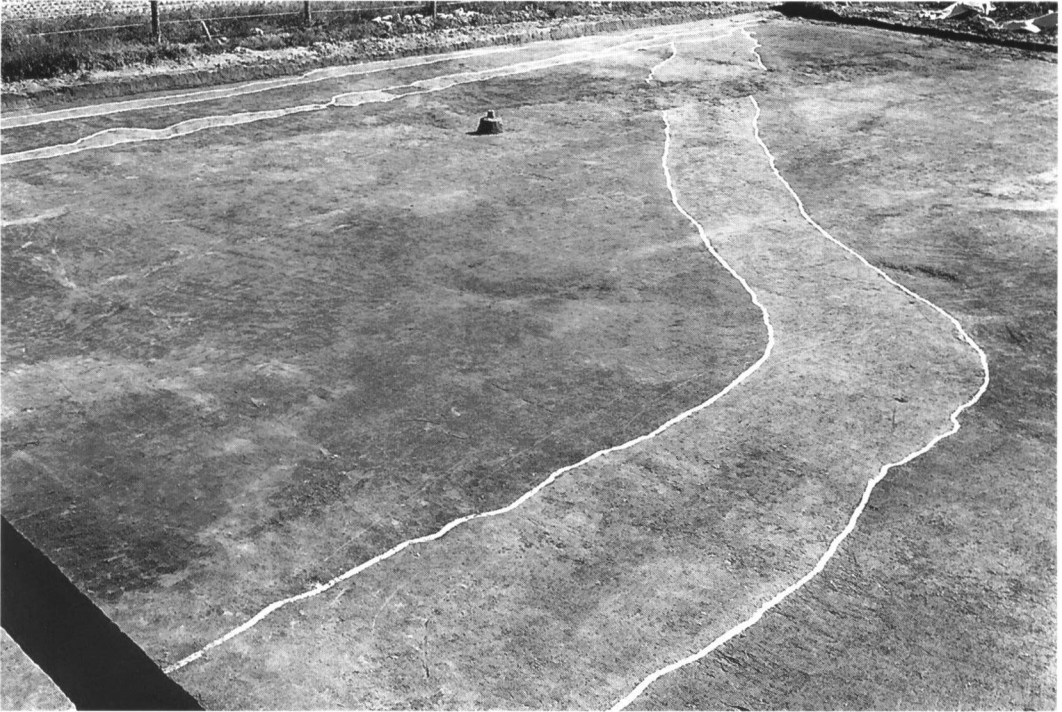
図版 38



O,P-41,42区 掘削状況 (北から)



O,P-41,42区 S D28 遺物出土状況

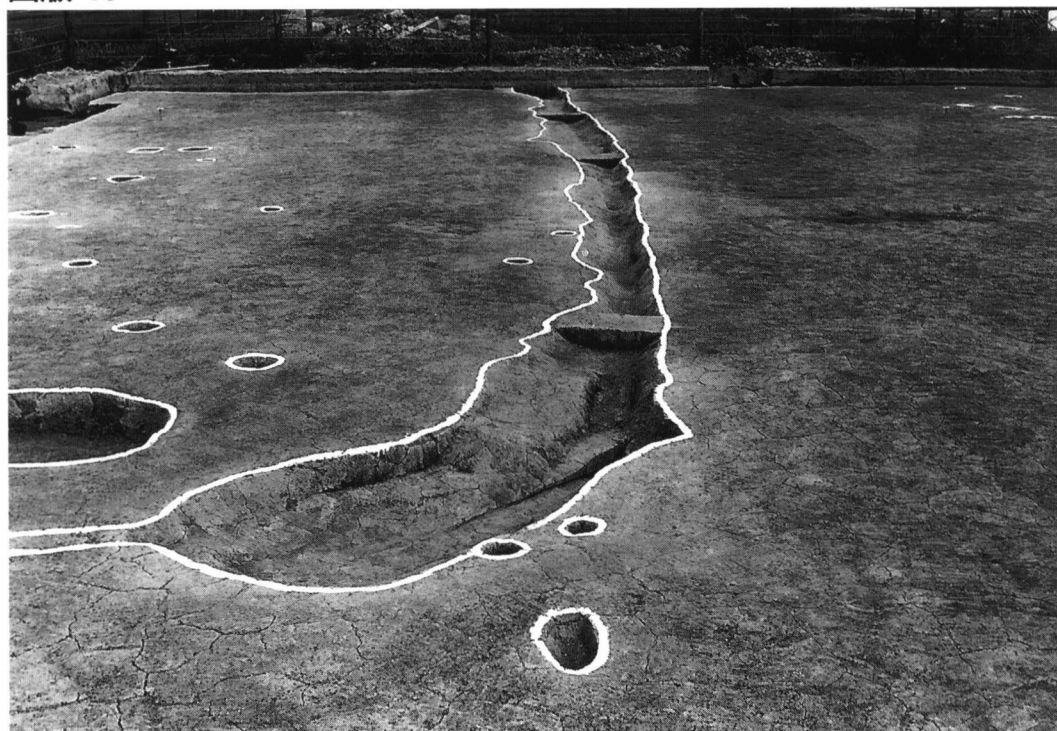


O-39,40区 SD29 検出状況 (西北から)



O-39,40区 SD29 掘削状況 (西北から)

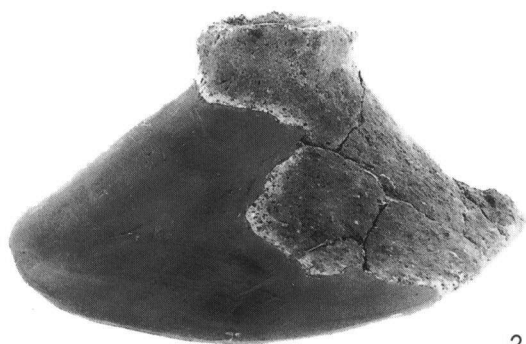
図版 40



N-39~42区 S D31 掘削状況 (南から)

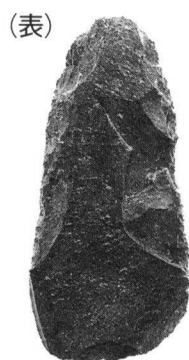


地元説明会 遺物展示状況

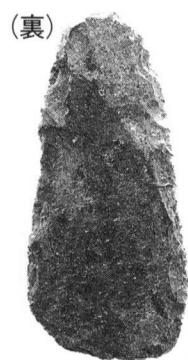


2

S D02 出土遺物



(表)

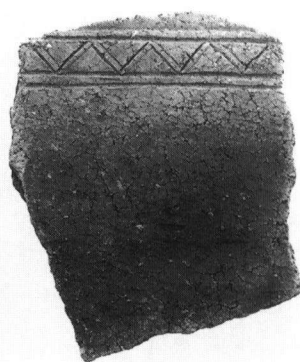


(裏)

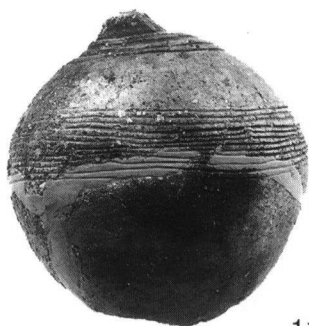
3



9

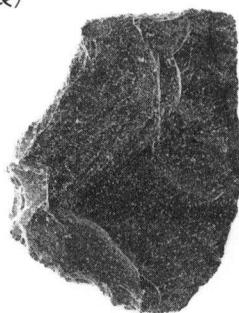


10

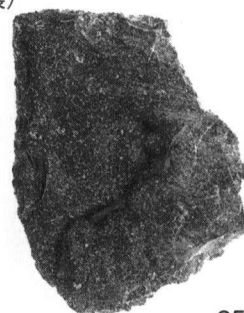


11

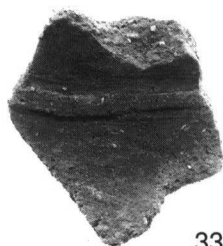
(表)



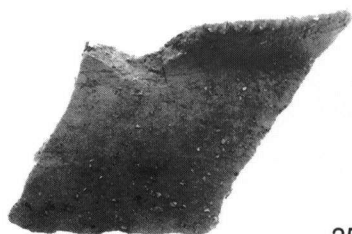
(裏)



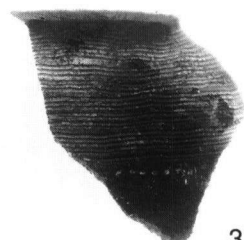
25



33



35



37

O,P-43区 S R01 (東) 出土遺物①

図版 42



(横)



(横)



(底)

43



(底)

44

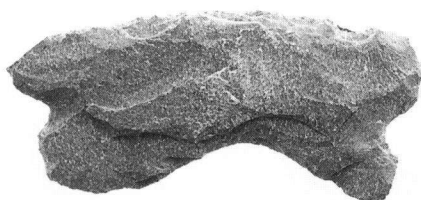


(表)



(裏)

47



(表)

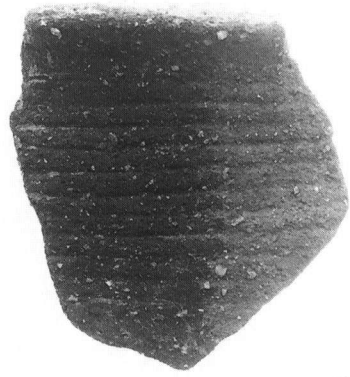


(裏)

50



57



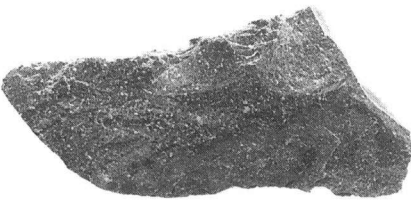
68



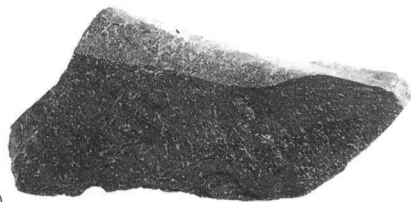
59



69

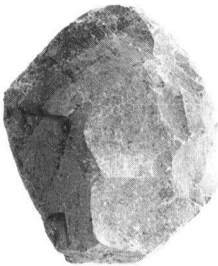


(表)

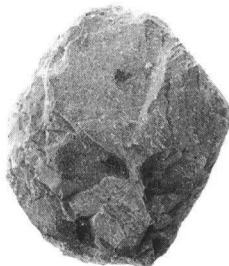


(裏)

85



(表)



(裏)

90



93



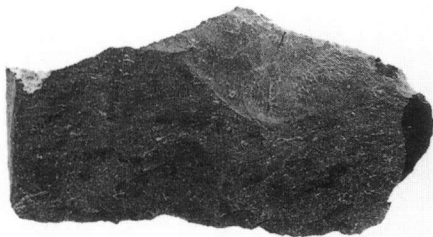
図版 44



(横)



(細部)



(表)



(裏)

104

O,P-43区 SR01 (西) 出土遺物②



106

(表)



107



(裏)

116

N-37,38区 SR01 出土遺物①



112



113



(表)



(裏)

115

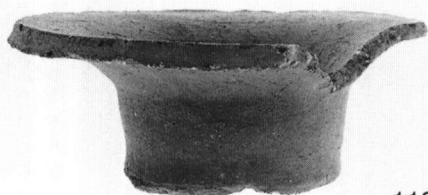


110

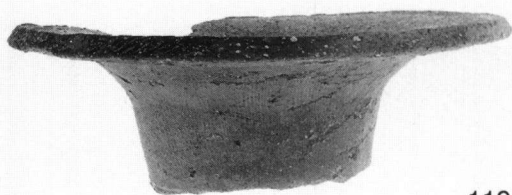


117

図版 46



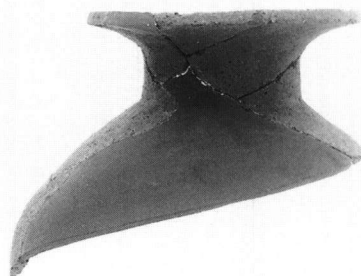
118



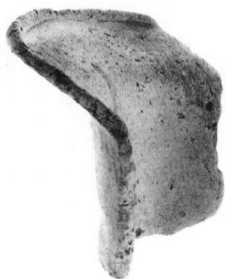
119



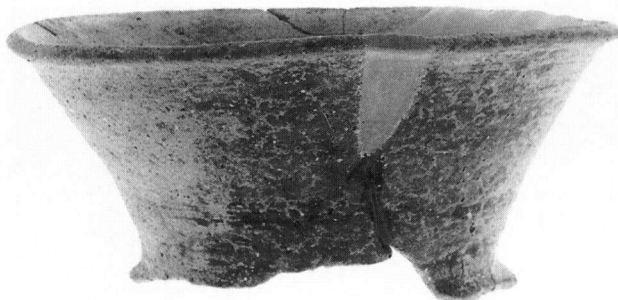
121



123



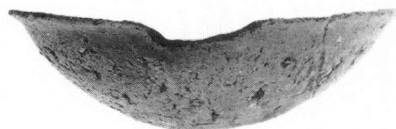
124



126



131



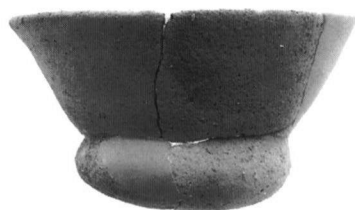
149



150



(横)



155



(底)

153



156



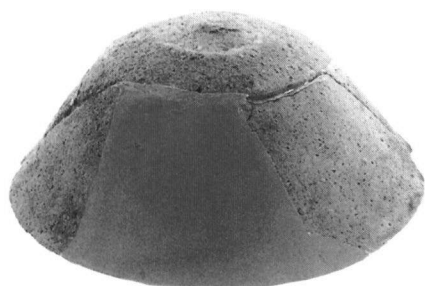
157



(横)



159

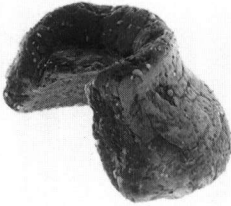


(底)

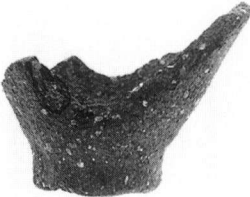
161



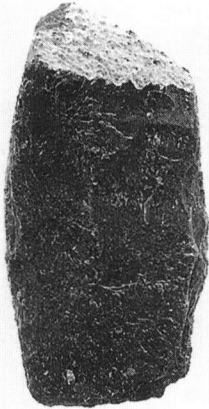
162



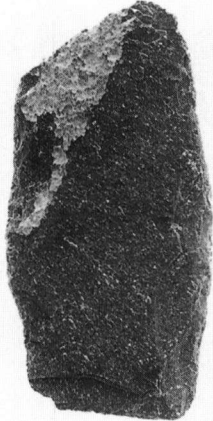
166



168

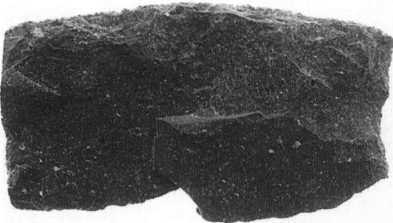


(表)

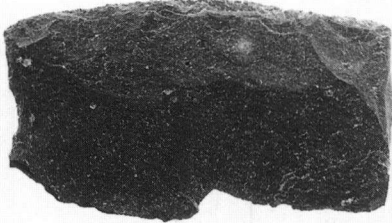


(裏)

171

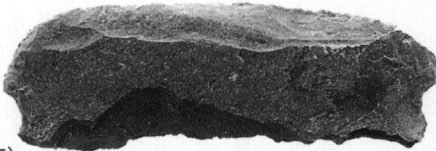


(表)

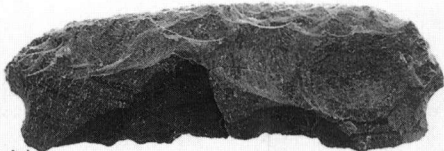


(裏)

174



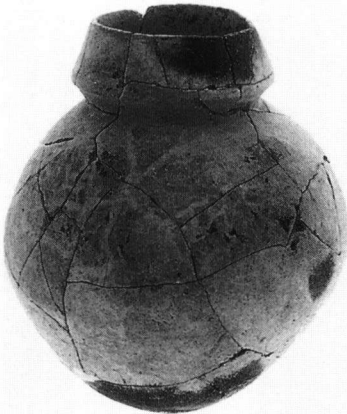
(表)



(裏)

175

O,P-41,42区 S D04 下層 出土遺物③



184



186

O,P-41,42区 S D04 上層 出土遺物①



(横)

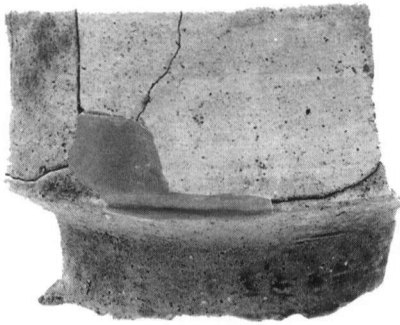


(細部)

187



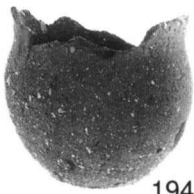
188



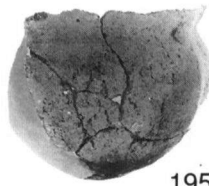
189



198



194



195



201



196



202

図版 50



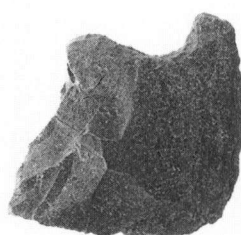
203



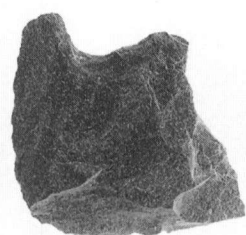
214



(横)

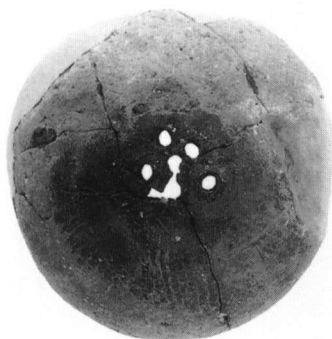


(表)



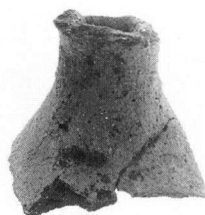
(裏)

218

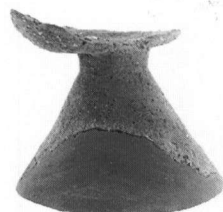


(底)

209



216



234

O,P-41,42区 S D05 上層 出土遺物③

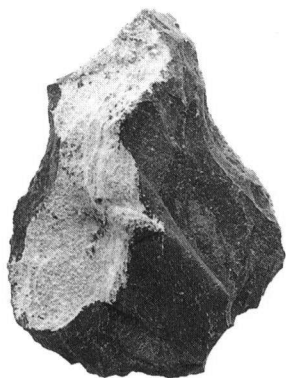


225

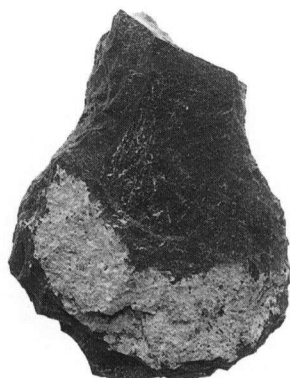


229

O,P-41,42区 S D05 下層 出土遺物



(表)



(裏)

248

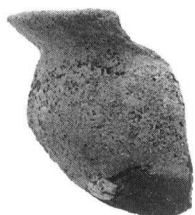


242

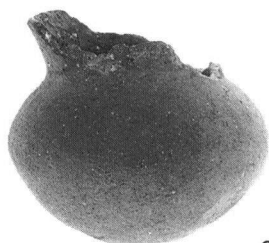
O-39,40区 S R01 出土遺物



251



253



254

O-39,40区 S D05等 出土遺物①

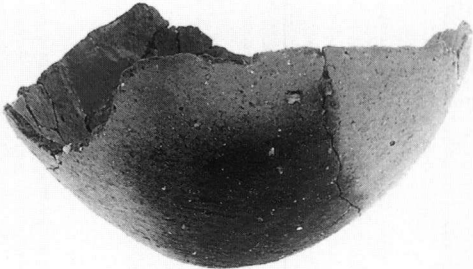


259

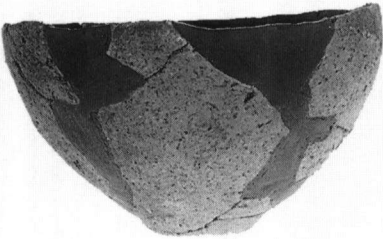




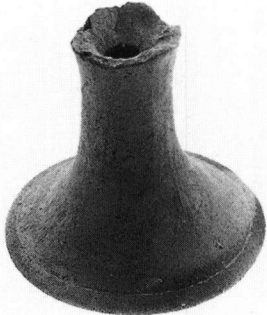
265



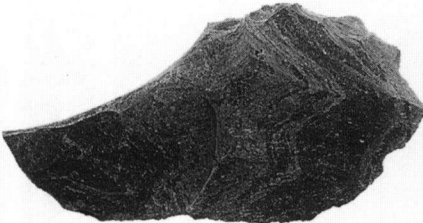
275



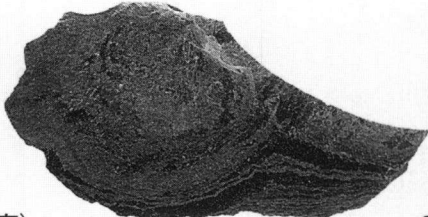
279



282



(表)



(裏)

289

O-39,40区 S D05等 出土遺物②



293



297

O-39,40区 S D05 下層 出土遺物①



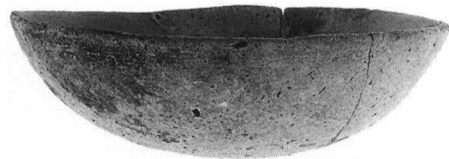
296



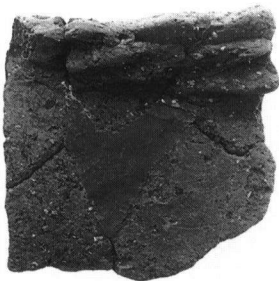
300



301



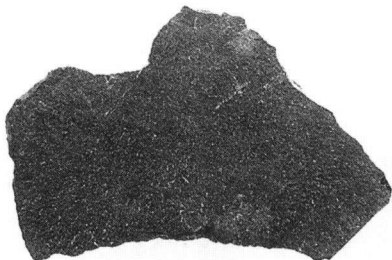
309



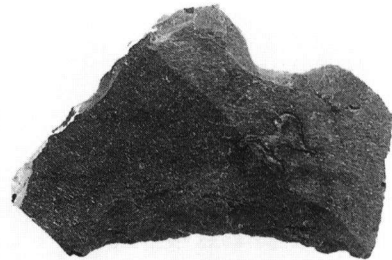
303



310

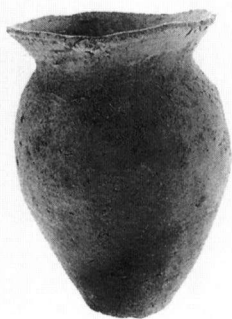


(表)



(裏)

311



313

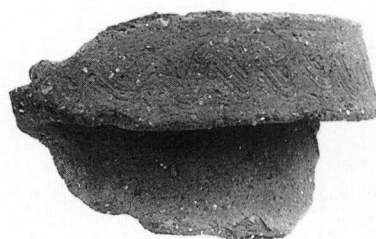


315

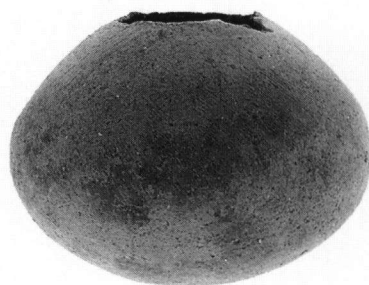
O-39,40区 S D05 上層 出土遺物



325



321



327

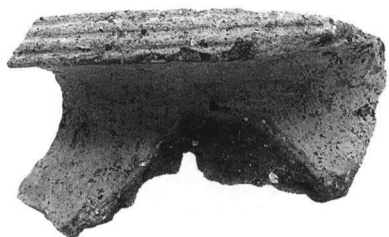


326

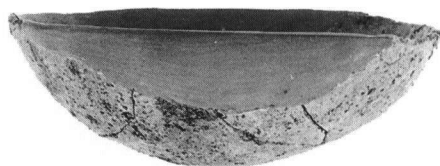


328

S D07 下層 出土遺物①



330



346



339



(横)



(底)

347



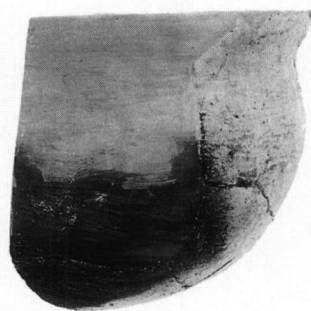
340



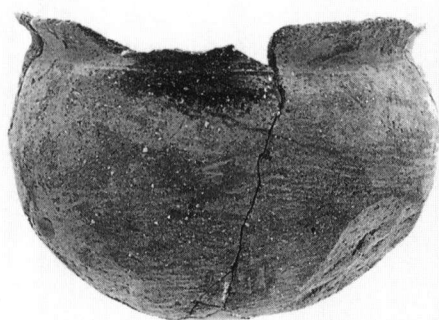
348



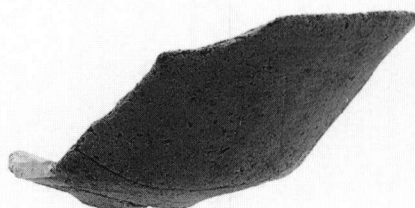
351



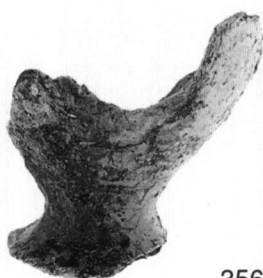
352



353



354



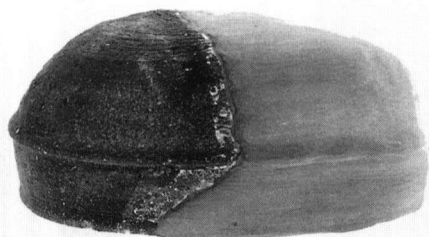
356



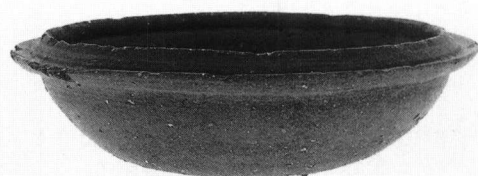
358



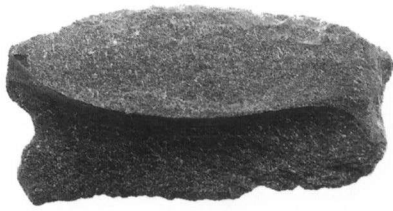
360



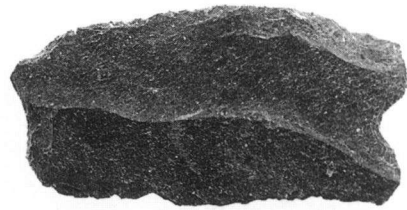
361



362



(横)



(裏)

363

S D07 下層 出土遺物④

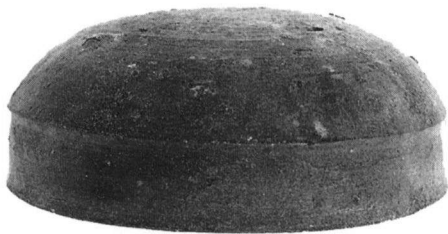


371

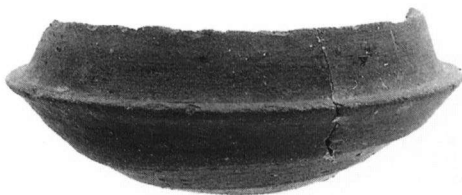


376

S D06 出土遺物



372



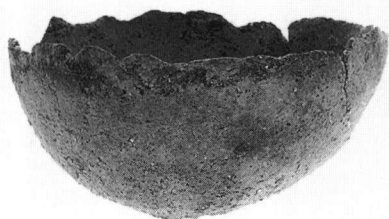
373

S D07 上層 出土遺物

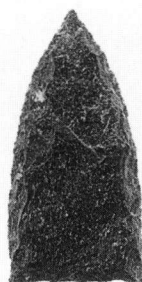


380

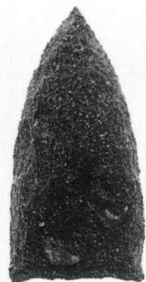
S D04 下層 出土遺物①



385 (表)

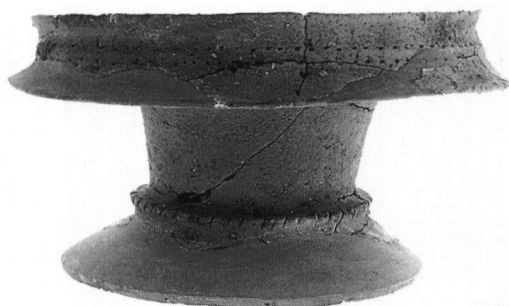


(裏)



386

S D 04 下層 出土遺物②



387



389

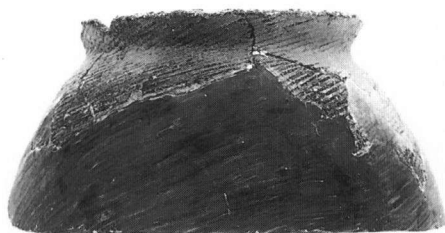
S D 04 上層 出土遺物



392



398



396



402

S D 05 下層 出土遺物①



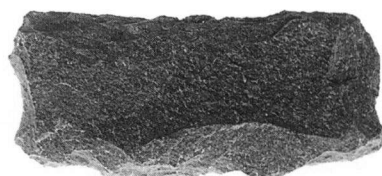
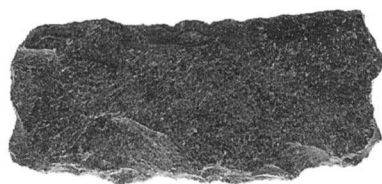
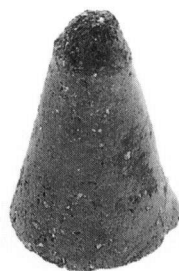
404



405



404



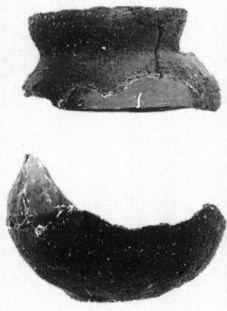
406



408



図版 60



409



417

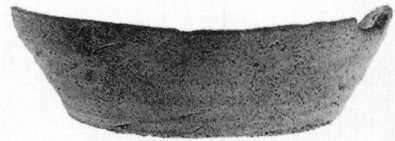
S D05 上層 出土遺物



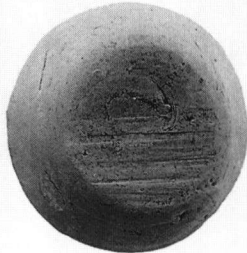
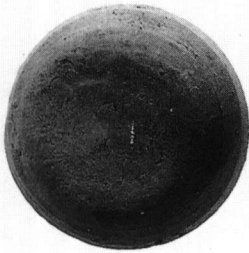
435



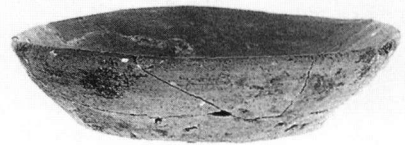
436



437

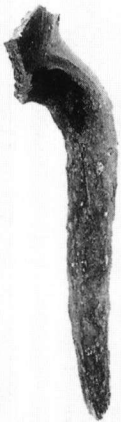


S B02 出土遺物



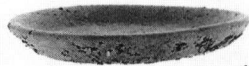
442

S B06 出土遺物

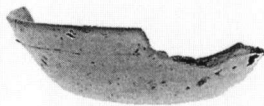


415

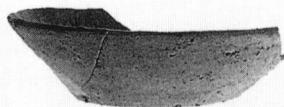
S B07 出土遺物



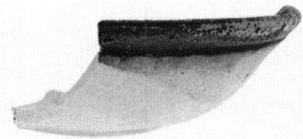
449



455

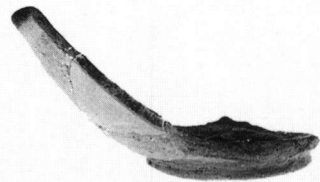


456



459

S B08 およびその周辺 出土遺物



471

S B12~14 周辺柱穴 出土遺物

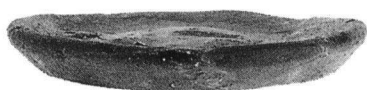


478

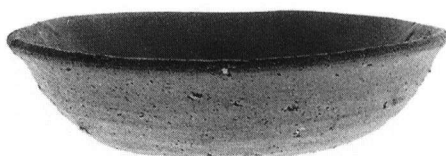


488

S B17 出土遺物



482



492



485



494



495

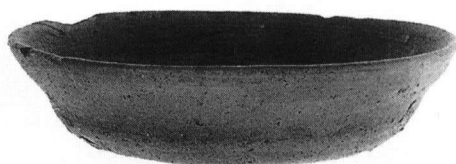


496

S B18 出土遺物



497



499

S B19 出土遺物



516



512



513



510



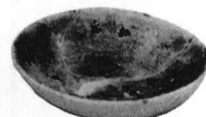
509



514



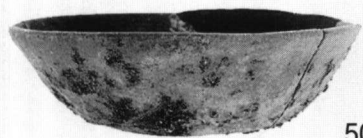
507



508

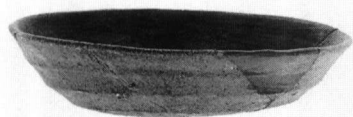
S K05 出土遺物①

図版 62



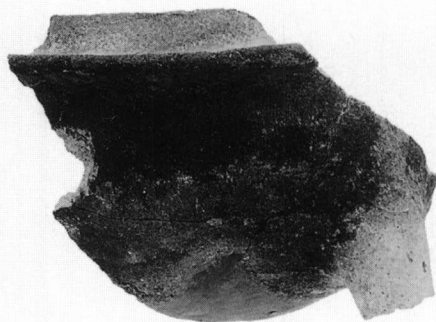
507

S K05 出土遺物②

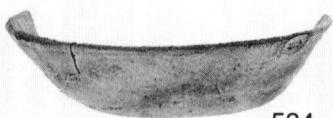


527

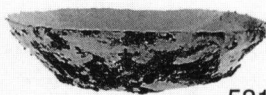
S K09 出土遺物



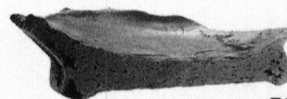
528



534



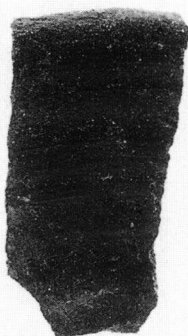
531



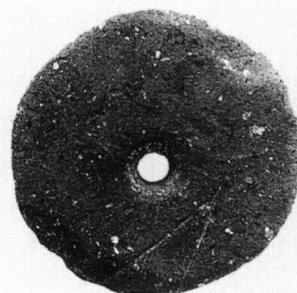
536



541



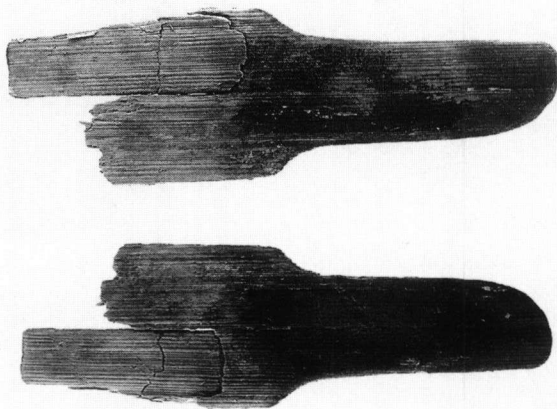
540



549



548



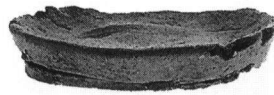
551

S K13 出土遺物



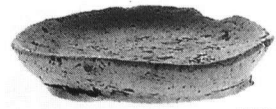
552

S K 14 出土遺物



559

S X 04 出土遺物



558



571



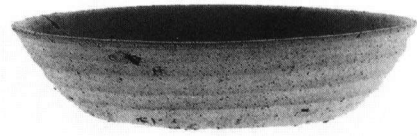
572



574



570



587



577



583



585



581



588



578



580



586



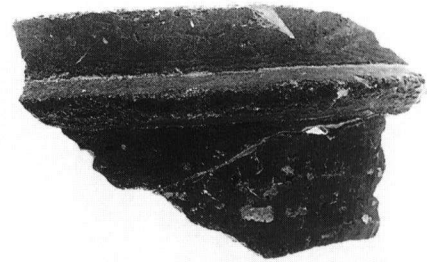
587

S D 28 出土遺物



613 (表)

包含層 出土遺物



599

近・現代の遺構 出土遺物



(裏)



631

四国横断自動車道建設に伴う

埋蔵文化財発掘調査報告

第十六冊

川津二代取遺跡

平成7年3月31日

編集 財団法人香川県埋蔵文化財調査センター  
〒762 香川県坂出市府中町南谷5001番の4  
電話 (0877) 48-2191 (代表)

発行 香 川 県 教 育 委 員 会  
財団法人香川県埋蔵文化財調査センター  
日 本 道 路 公 団

印刷 (株) 成 光 社



付図 川津二代取道跡 北部 遺構配置図



付図 川津二代取遺跡 南部 遺構配置図

