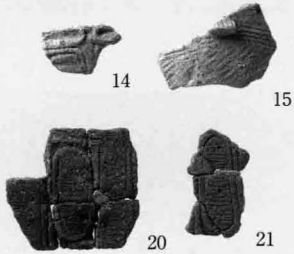


写真図版32 縄文時代中期の遺物 (1)

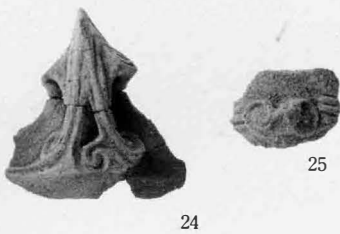
63②SA1



63②SA2



63②SP79



48①SR1



63②SR1



遺構外

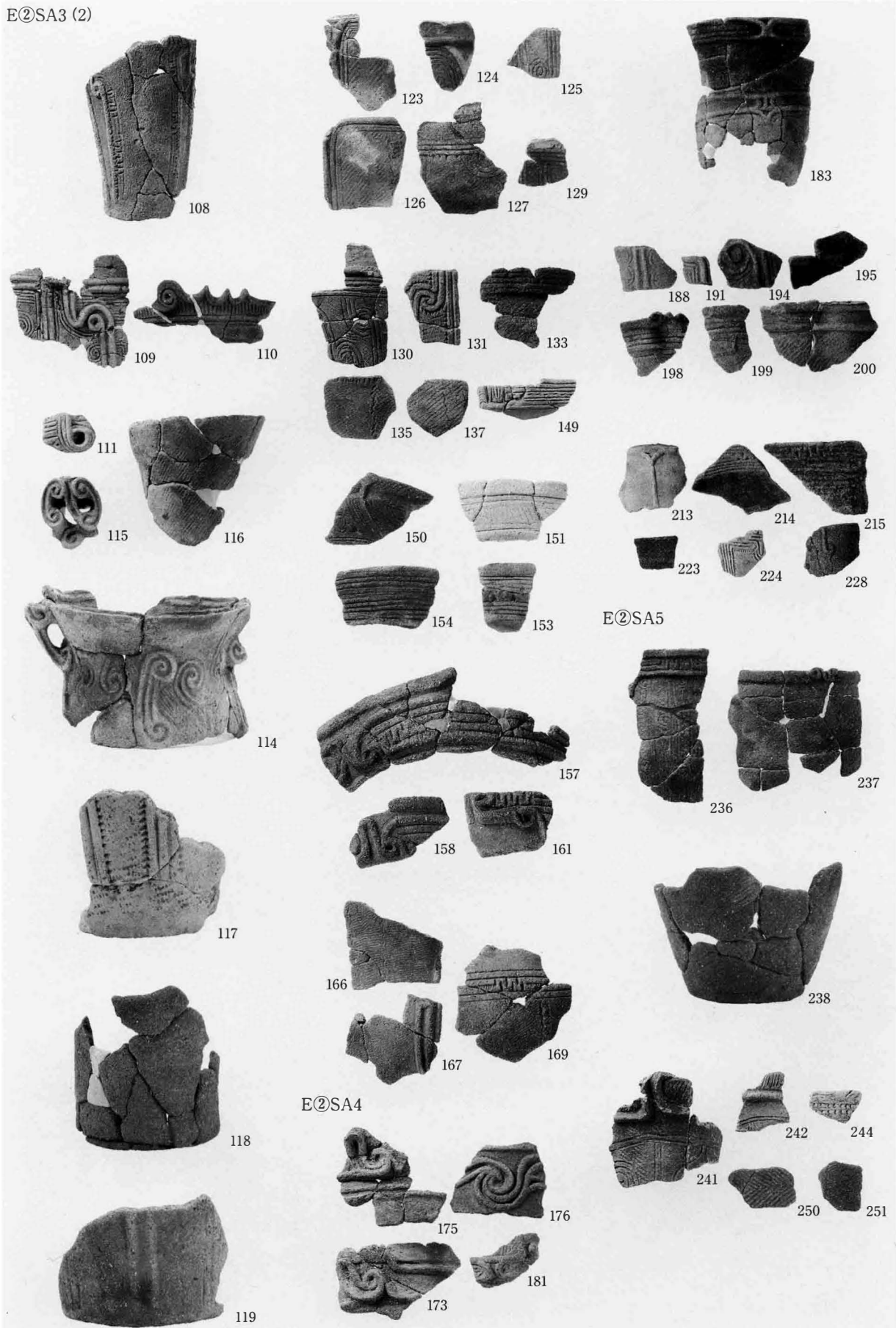


E②SA3 (1)

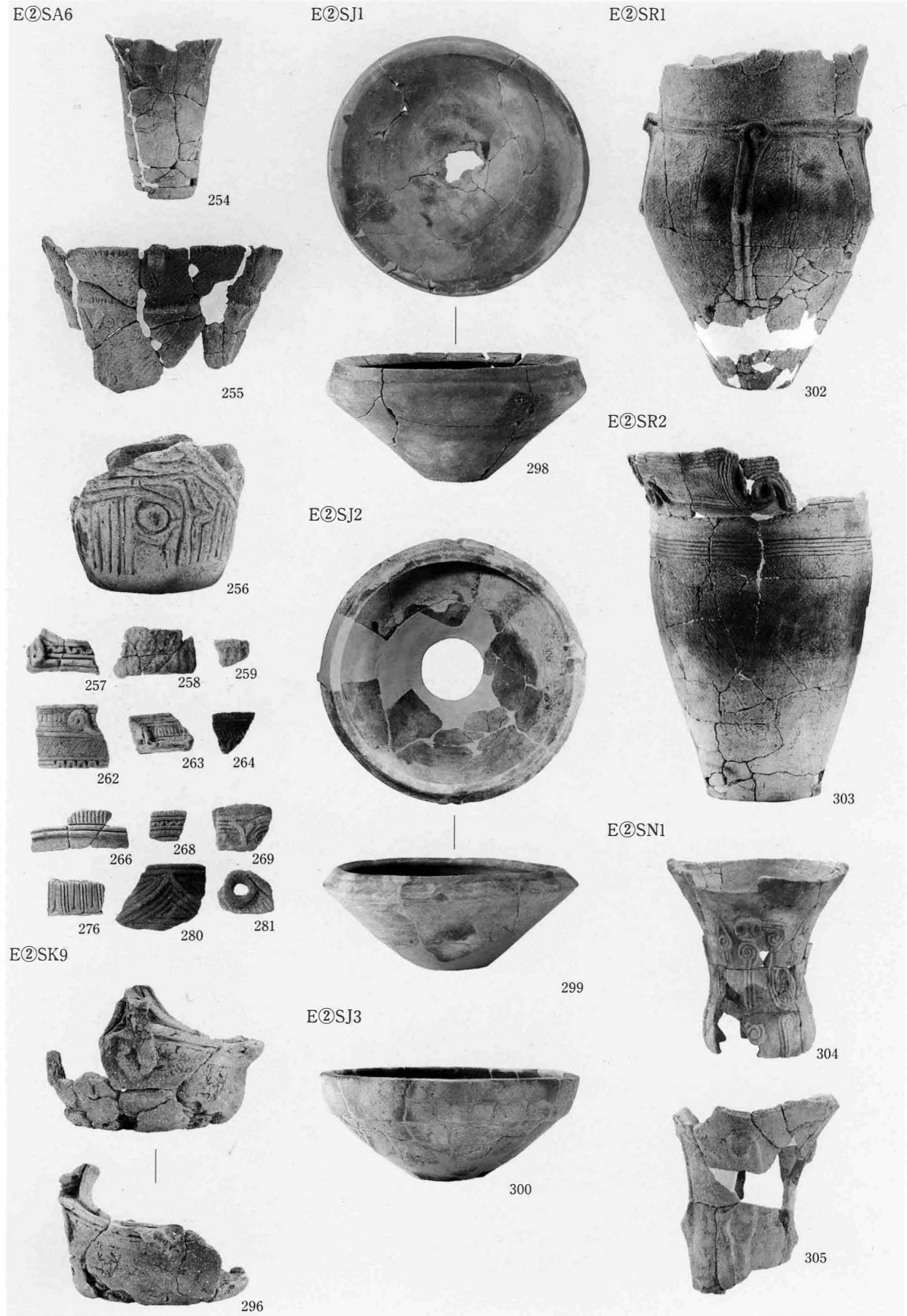


写真図版33 縄文時代中期の遺物 (2)

E②SA3 (2)

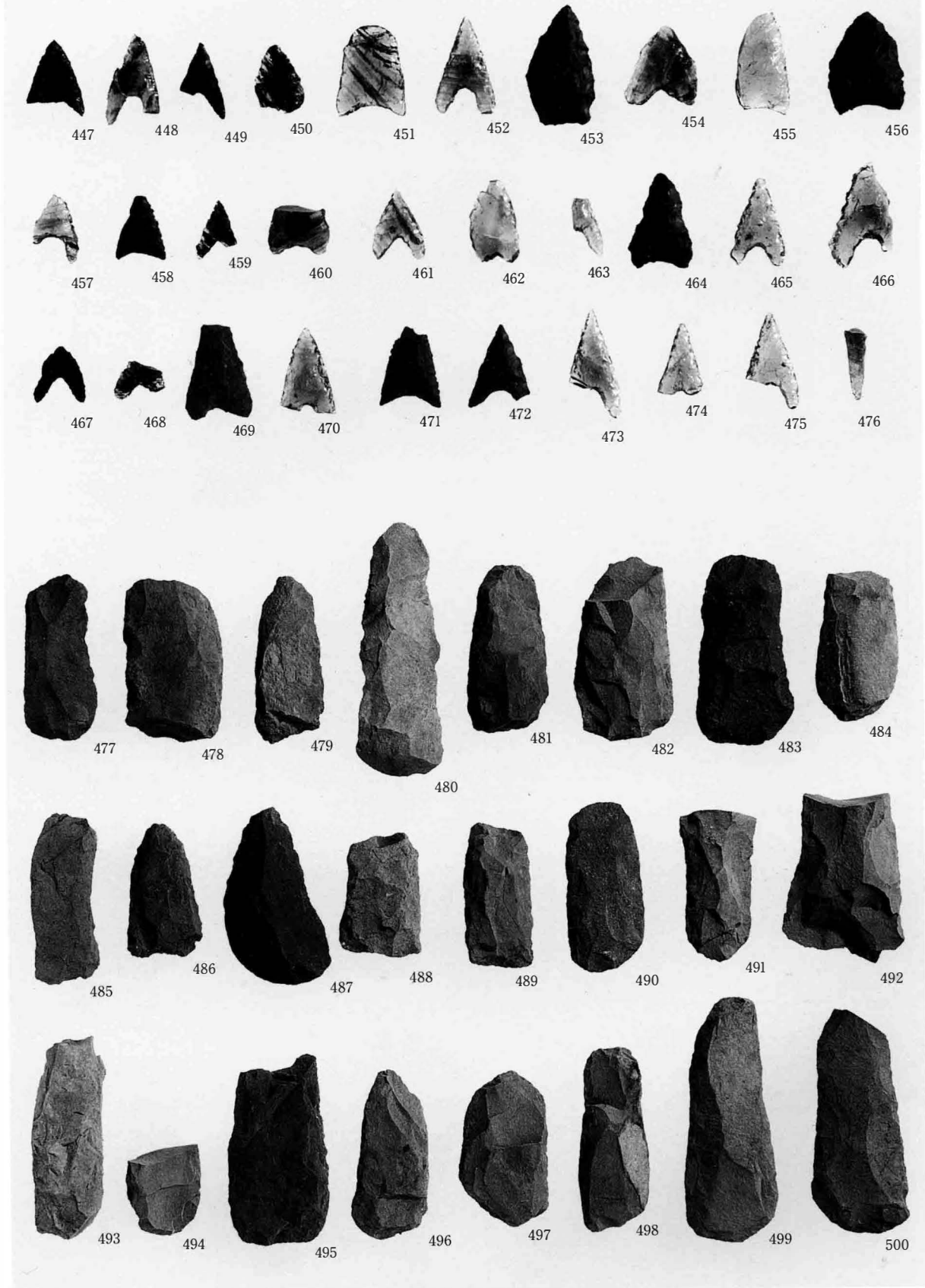


写真図版34 縄文時代中期の遺物 (3)

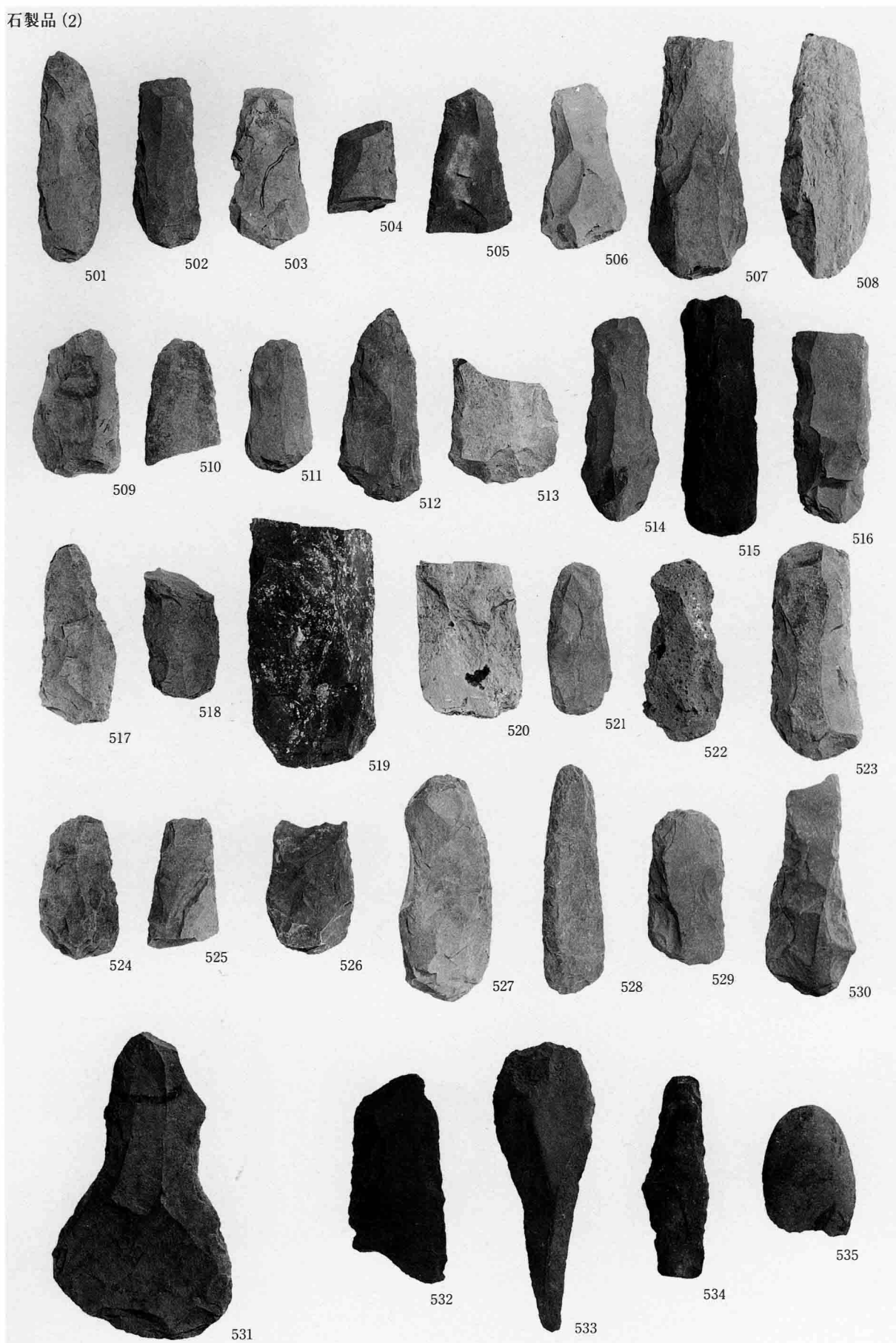


写真図版35 縄文時代中期の遺物 (4)

石製品 (1)

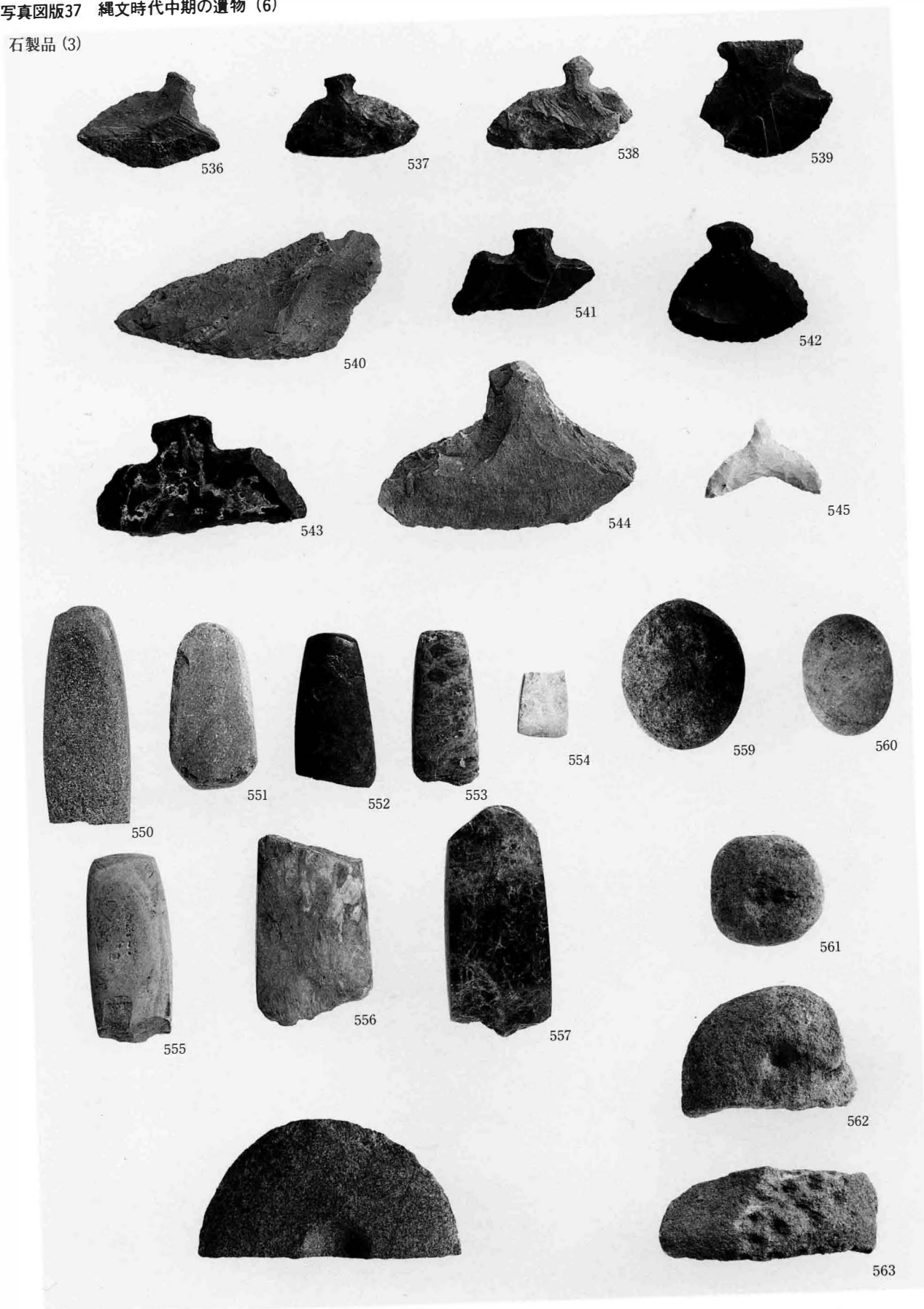


石製品 (2)

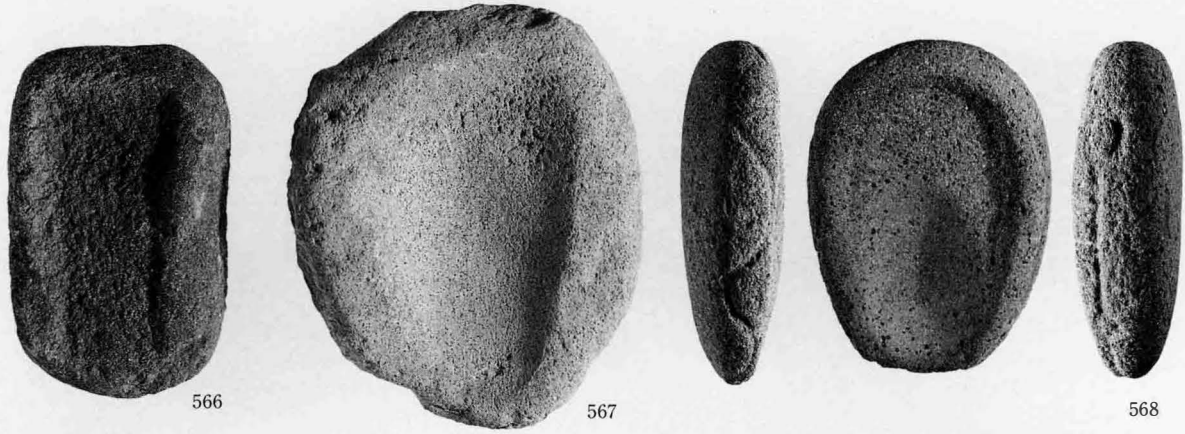


写真図版37 縄文時代中期の遺物 (6)

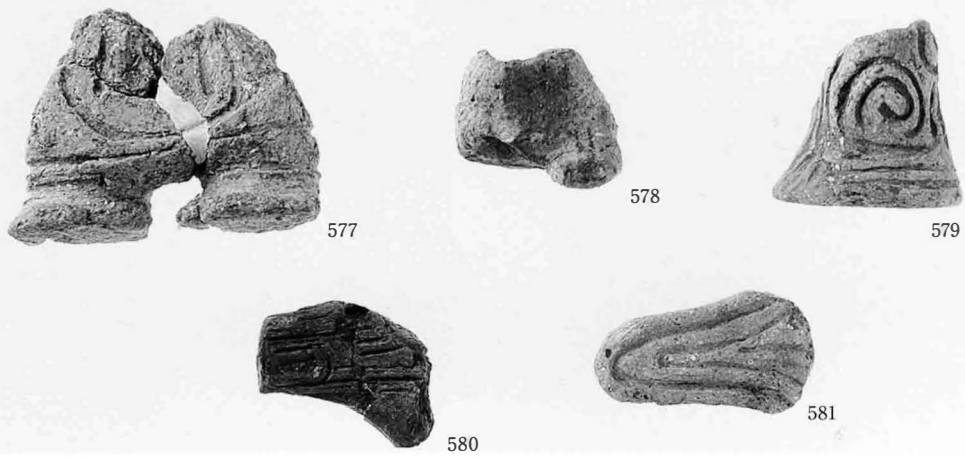
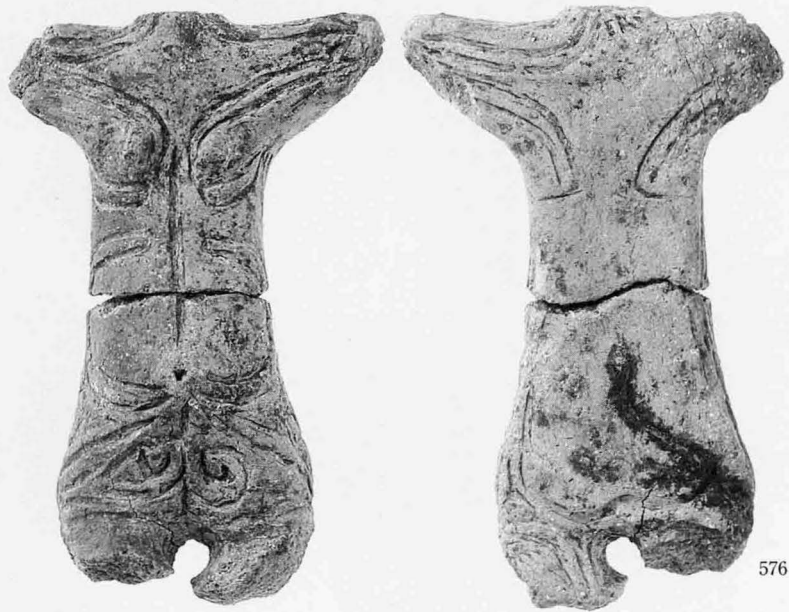
石製品 (3)



石製品 (4)



土製品



写真図版39 弥生時代中期の遺物 (1)

3①SA2

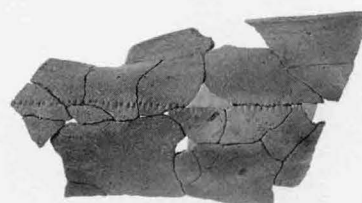
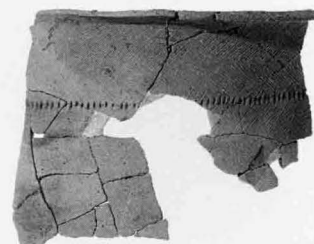


597

53②SA11



711



32①SA1



662



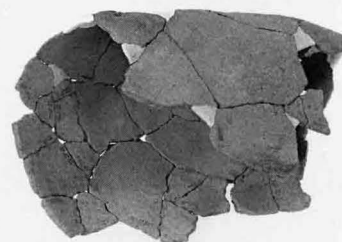
712



664



715



724



665



728



731



666



729



733

75①SA1



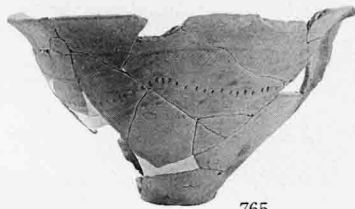
768



810



817



765



811

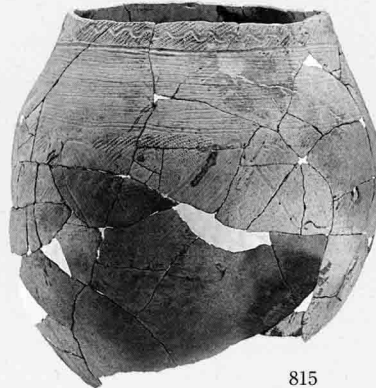


818

C②SA20



807

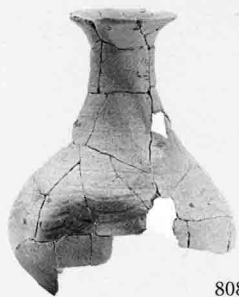


815

E①SA1



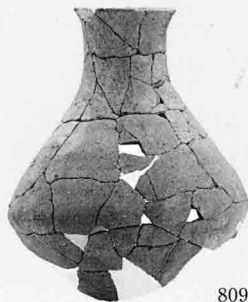
824



808



827



809



828



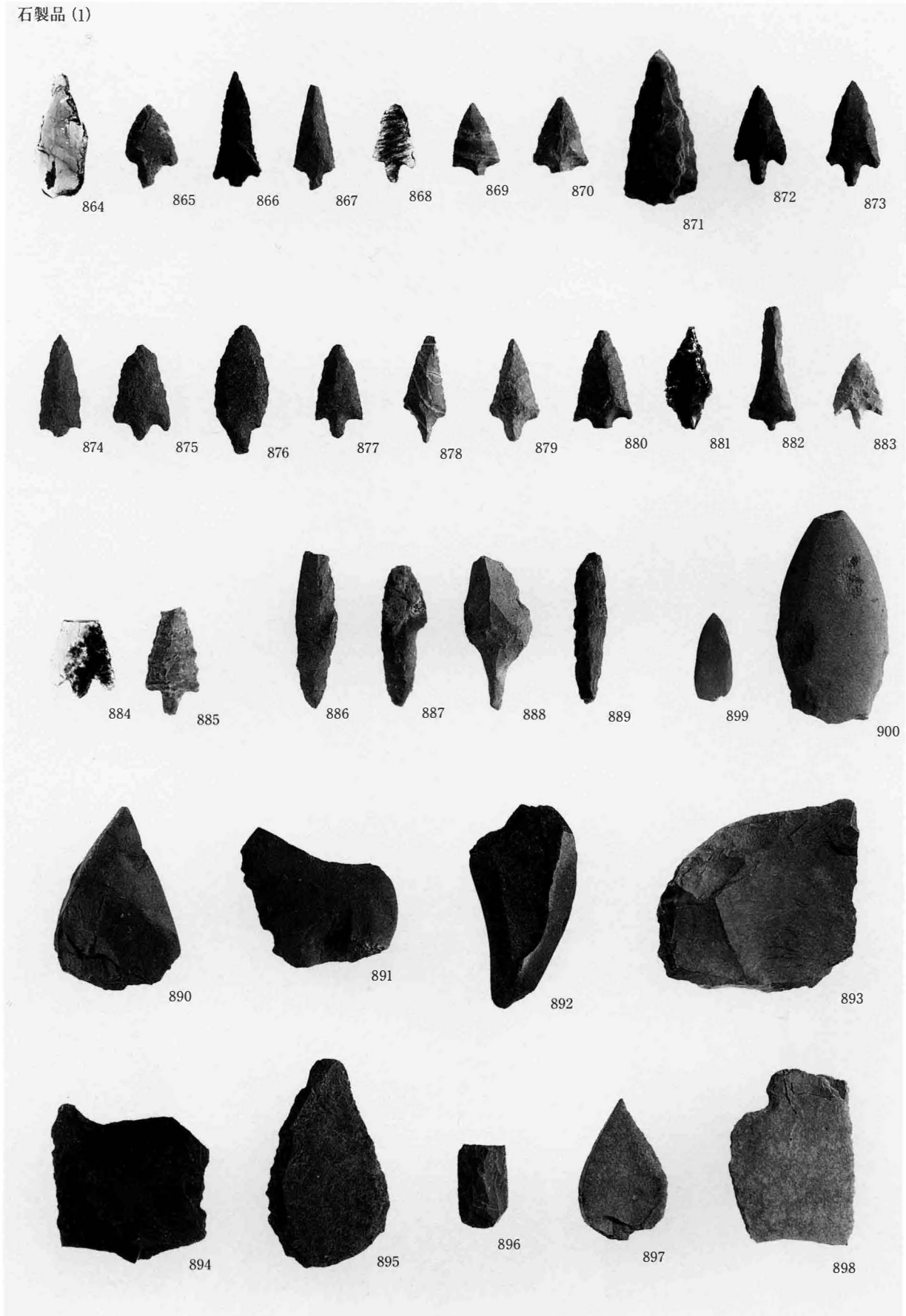
816



829

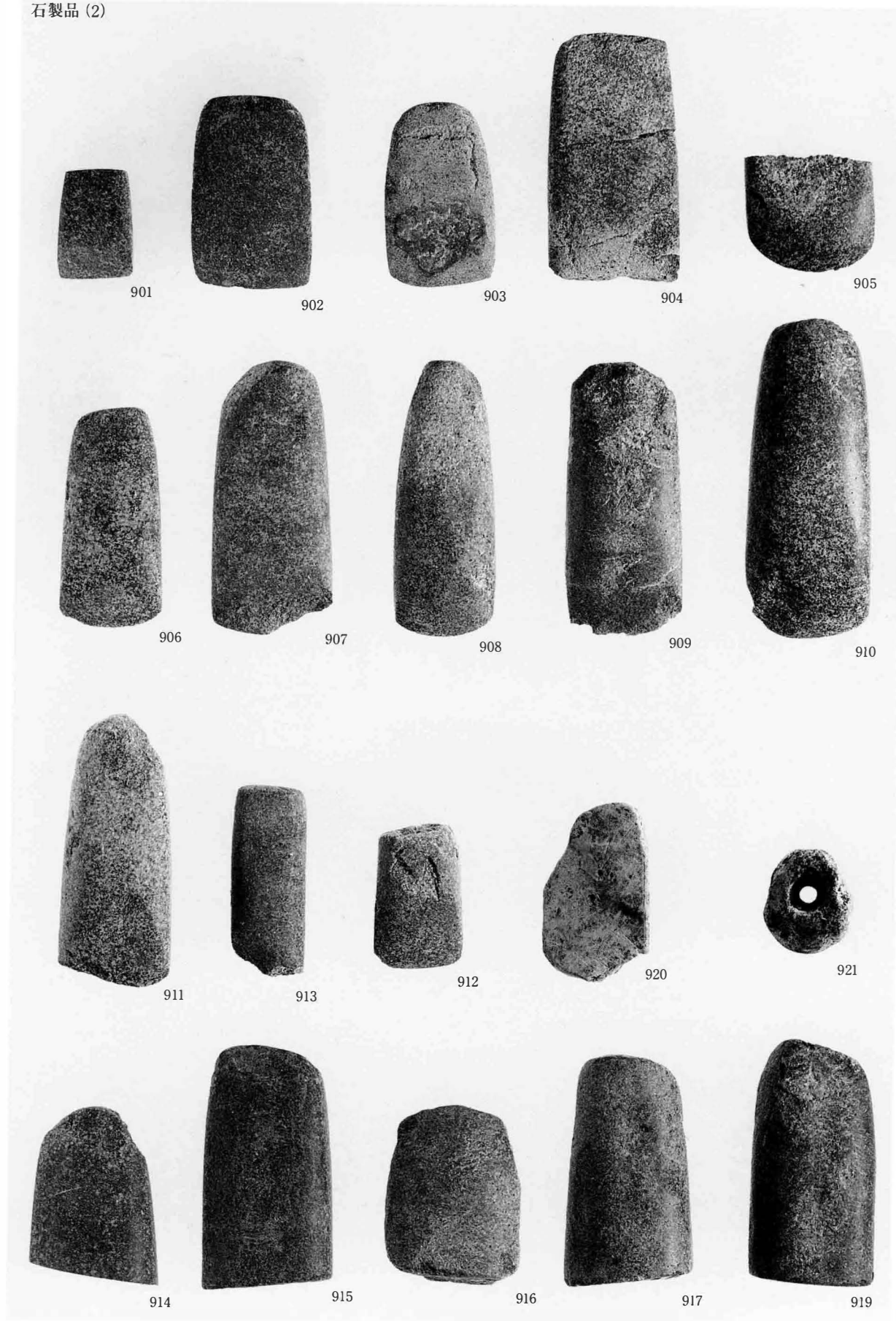
写真図版41 弥生時代中期の遺物 (3)

石製品 (1)

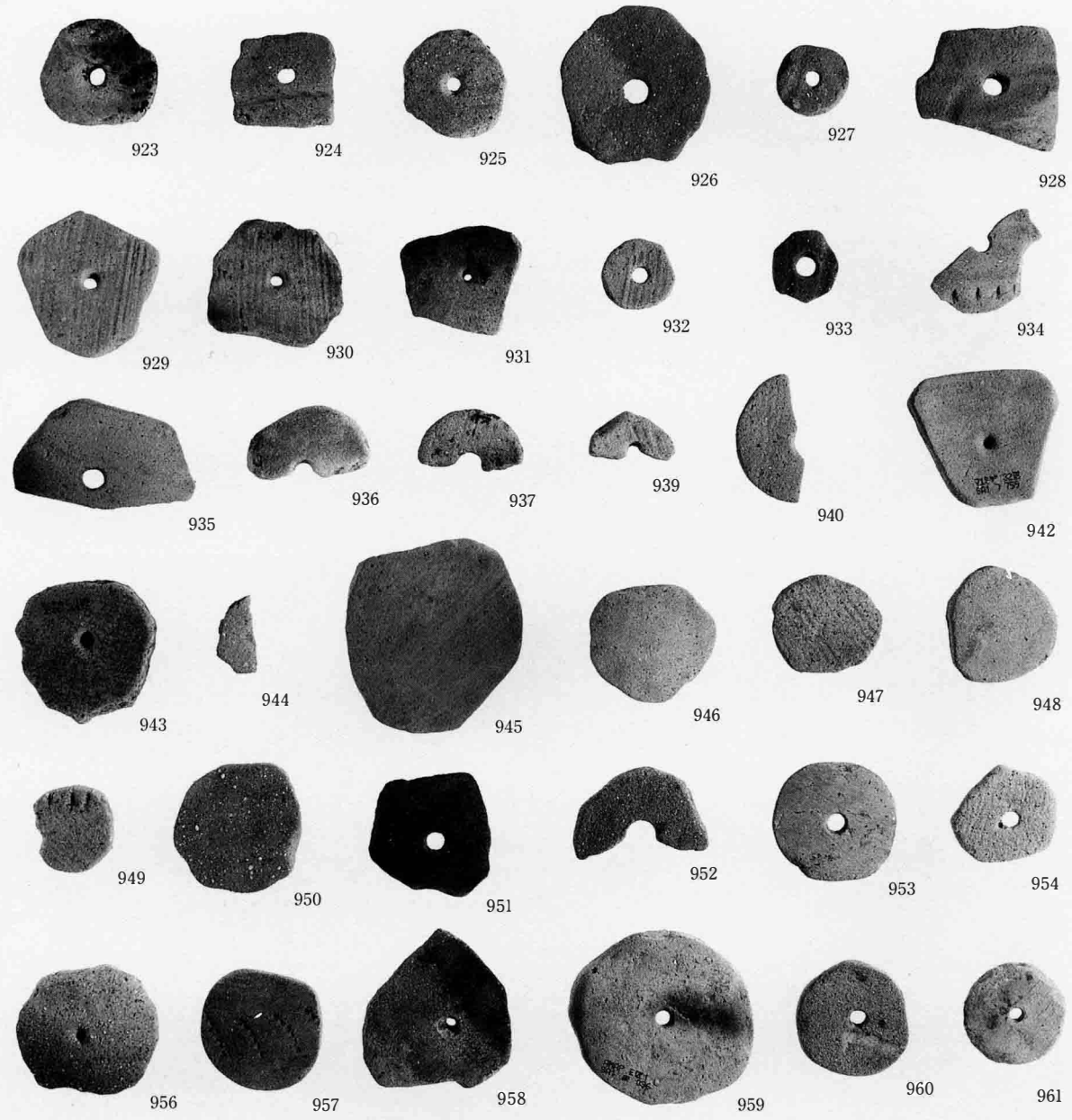


写真図版42 弥生時代中期の遺物 (4)

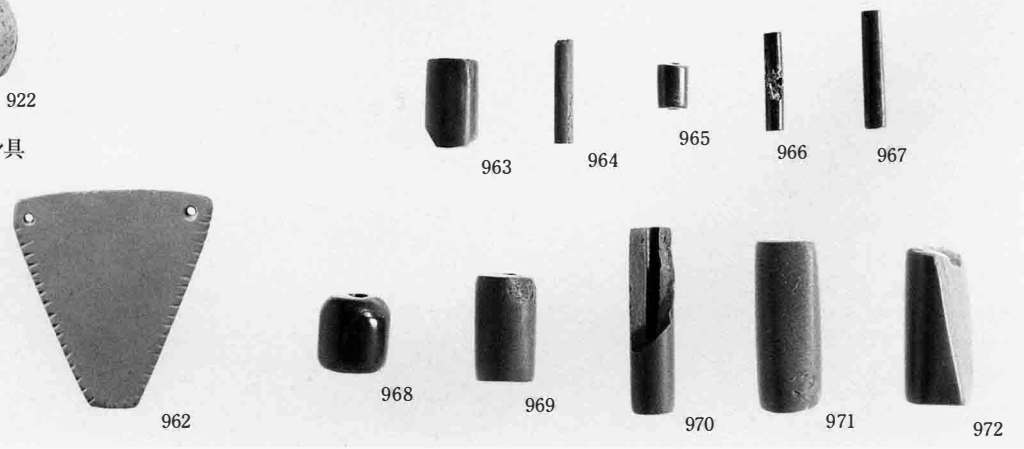
石製品 (2)



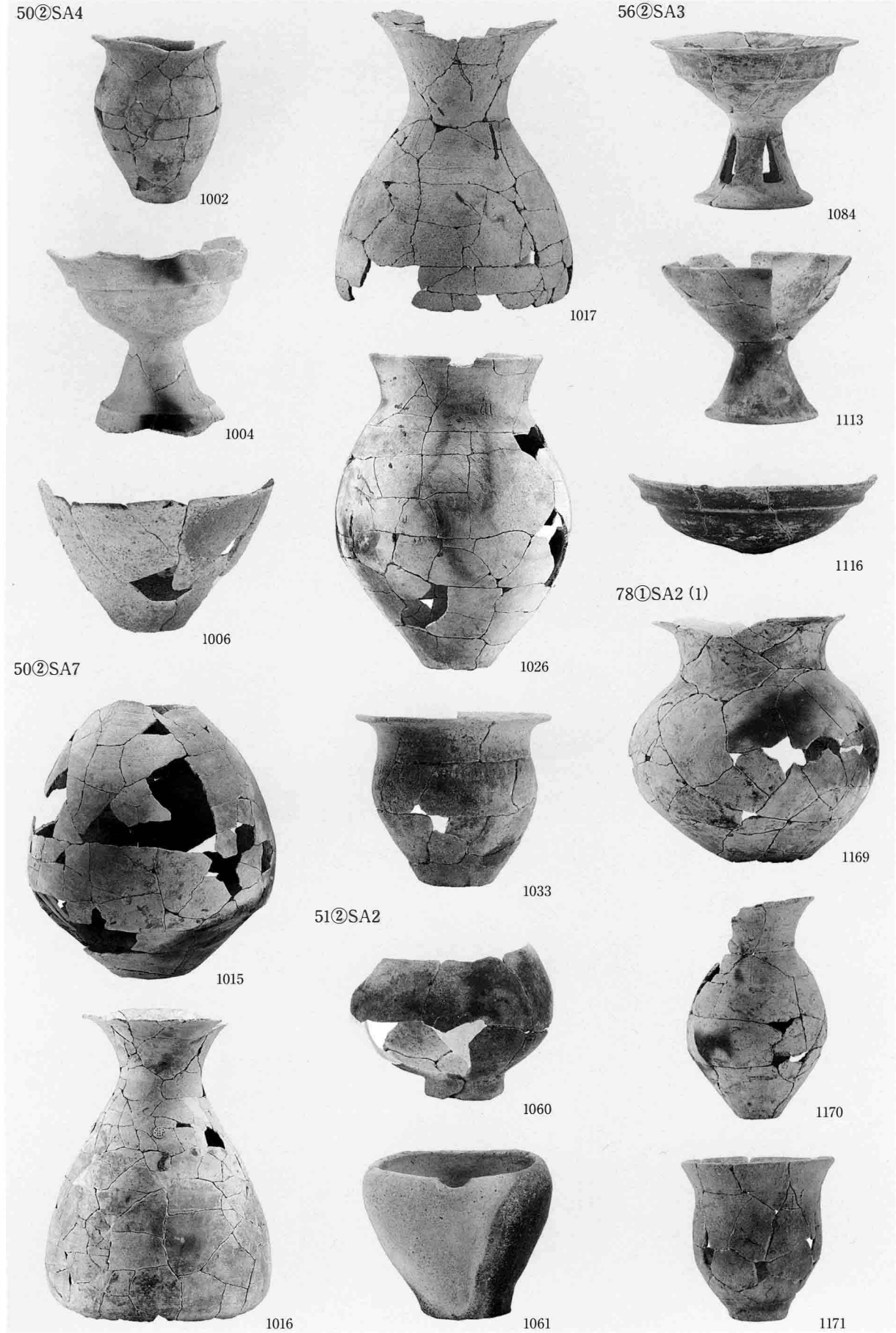
土製品



装身具

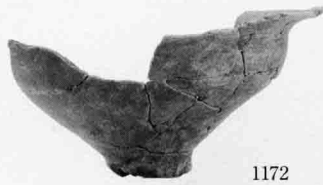


写真図版44 弥生時代後期の遺物 (1)

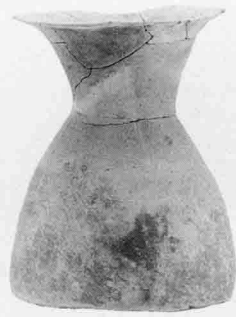


写真図版45 弥生時代後期の遺物 (2)

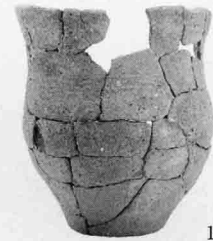
78①SA2 (2)



1172



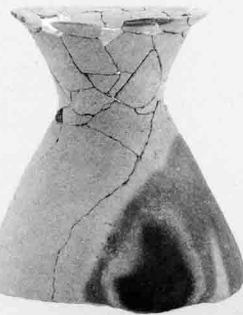
1196



1217



1173



1197



1218

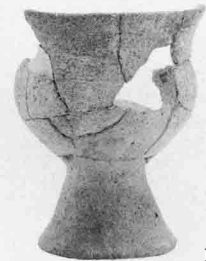
B②SA2



1192



1198



1219



1194



1201

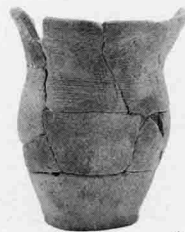


1221

B②SA3



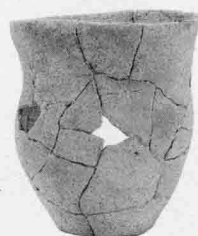
1195



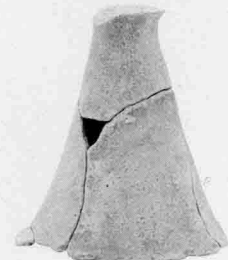
1215



1227



1216



1229

写真図版46 弥生時代後期の遺物 (3)

B②SA7



1233



1246



1259



1234



1247



1262

B②SA8



1235



1248



1263



1239



1252



1265

B②SA9 (1)



1240



1257



1270



1243



1258



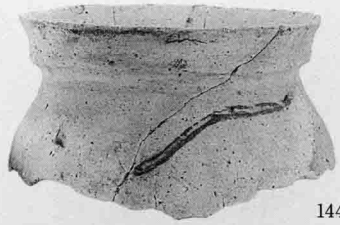
1271

写真図版47 弥生時代後期の遺物 (4)

B②SA9 (2)



1272



1448



1467



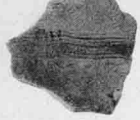
1274



1273



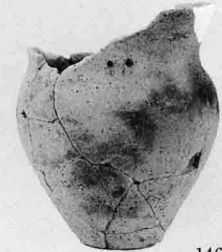
1276



1275



1453



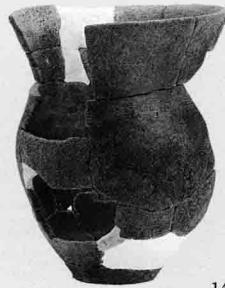
1468

B②SA18

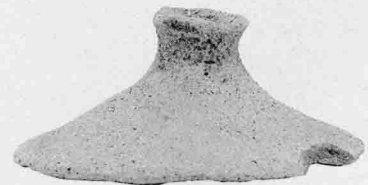


1334

C②SA12 (1)



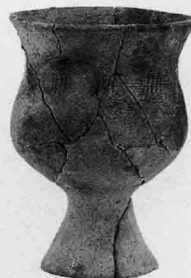
1459



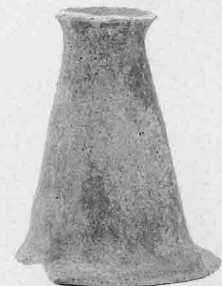
1466



1336



1460



1469



1337



1461



1470



1338

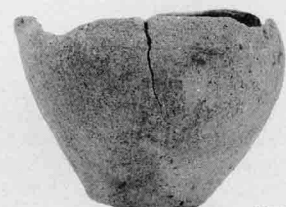
C②SA11



1447



1462

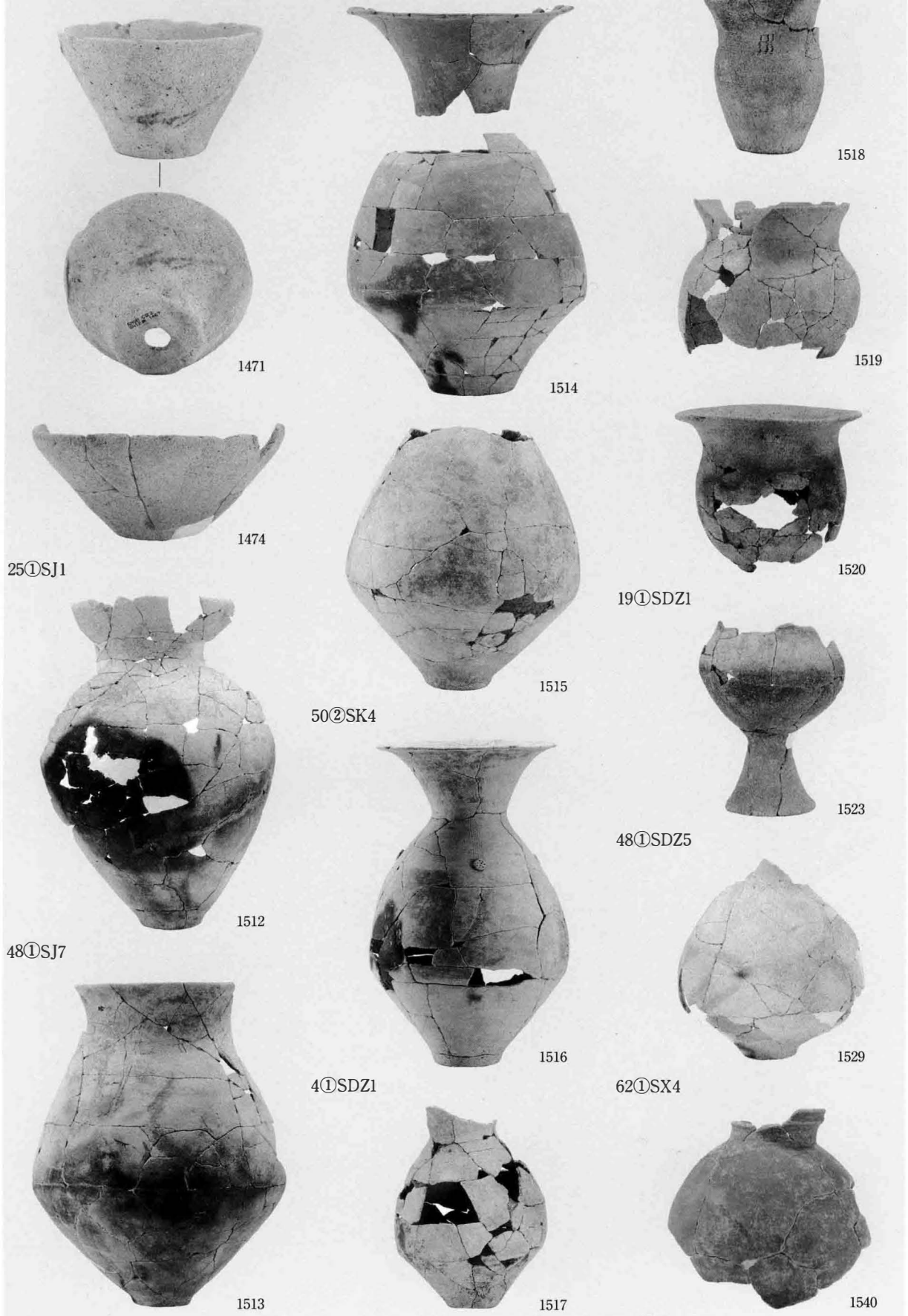


1473

写真図版48 弥生時代後期の遺物 (5)

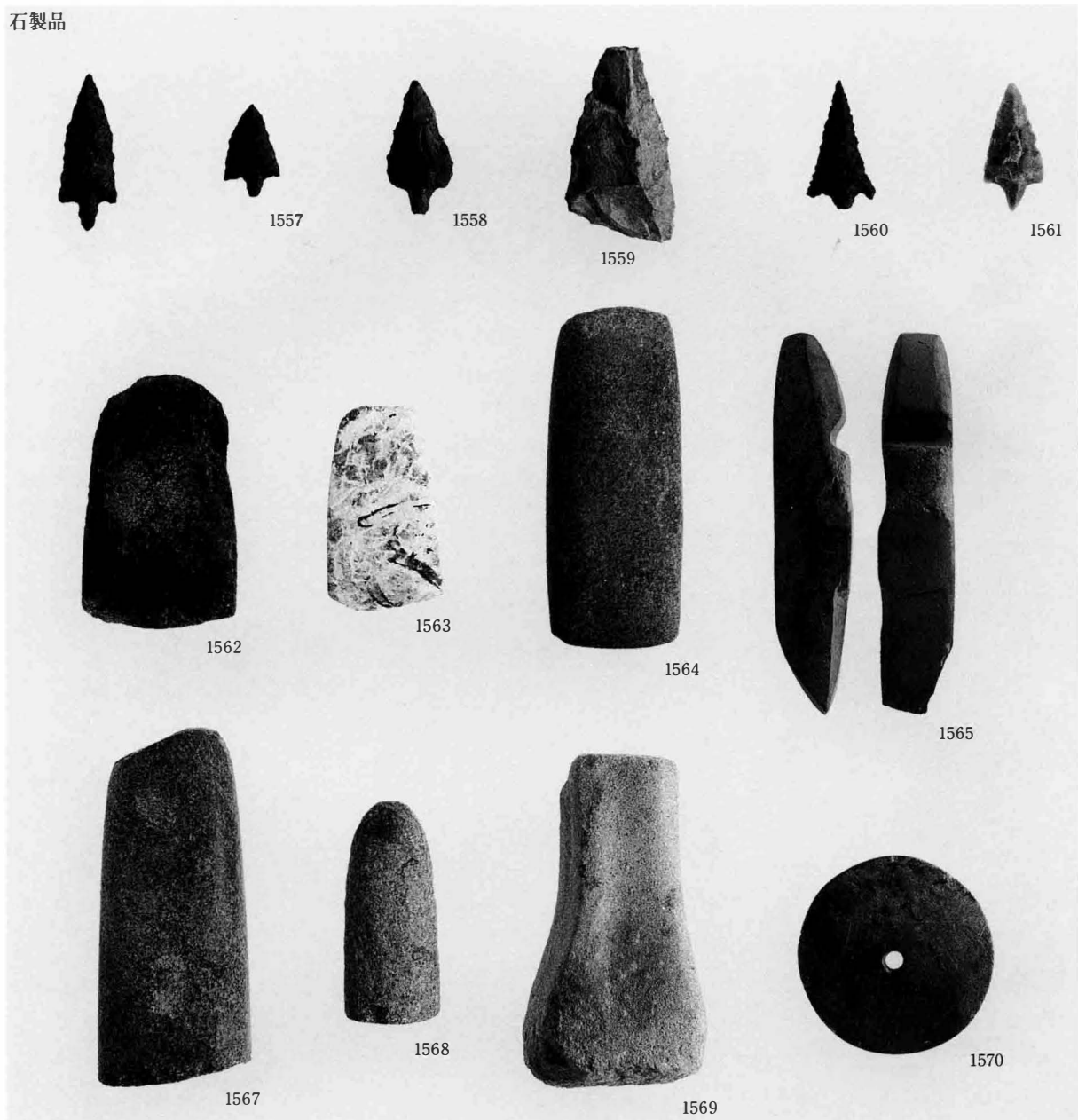
C②SA12 (2)

64①SJ1

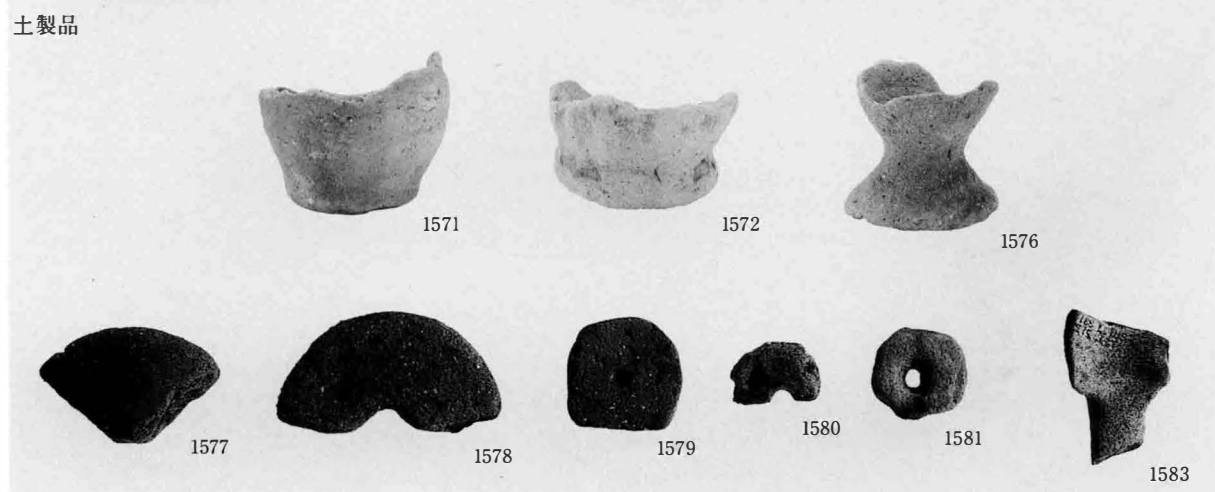


写真図版49 弥生時代後期の遺物 (6)

石製品

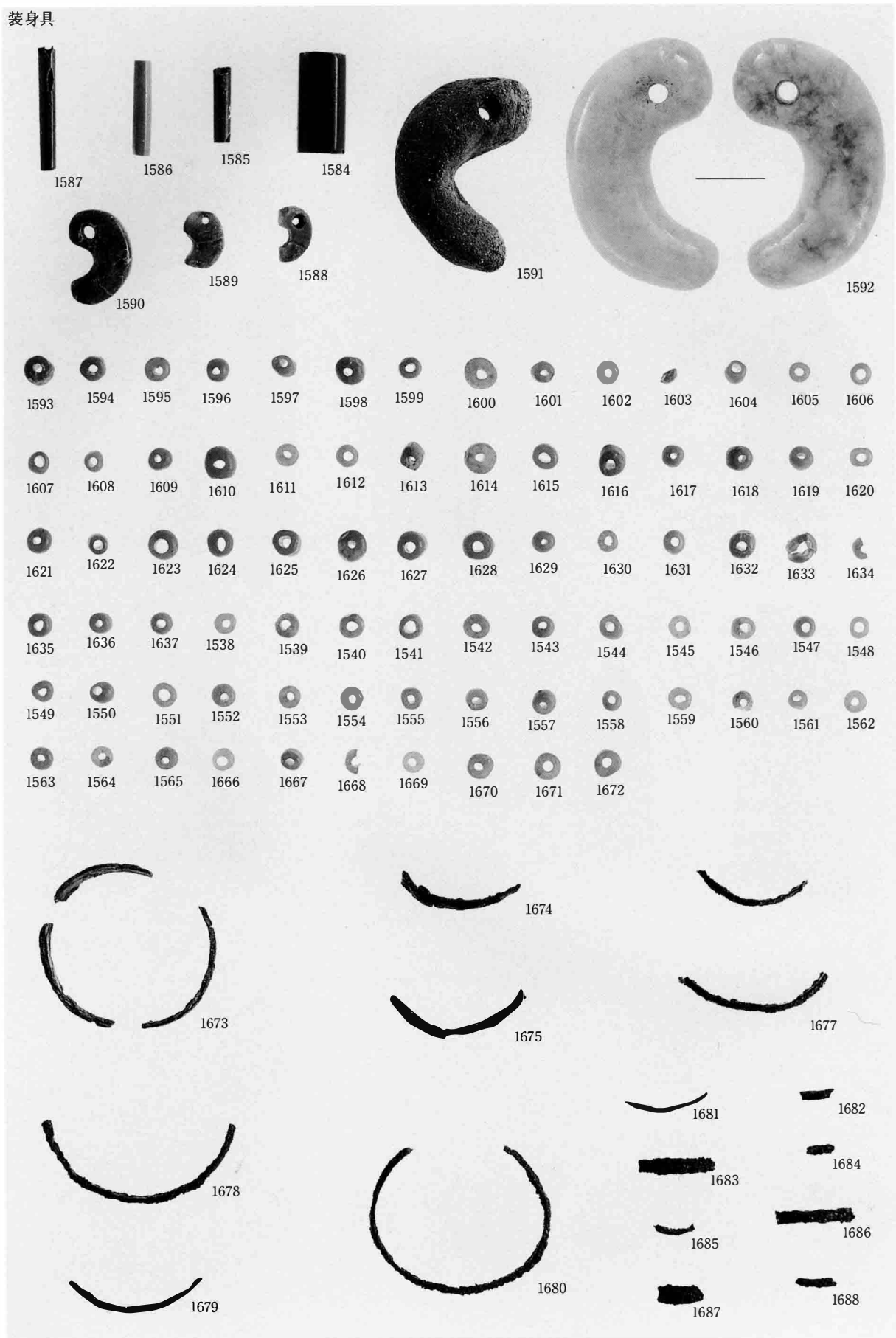


土製品

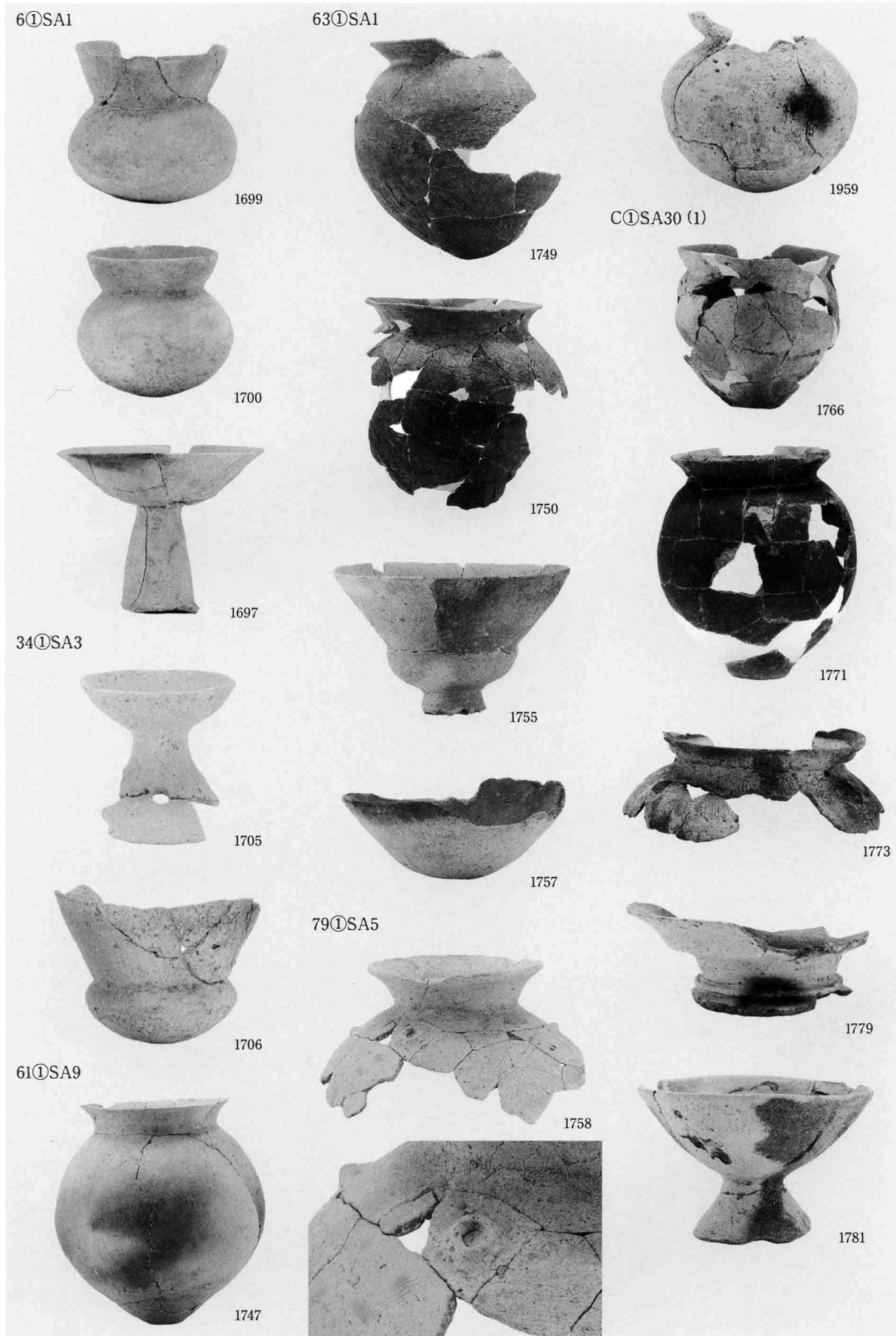


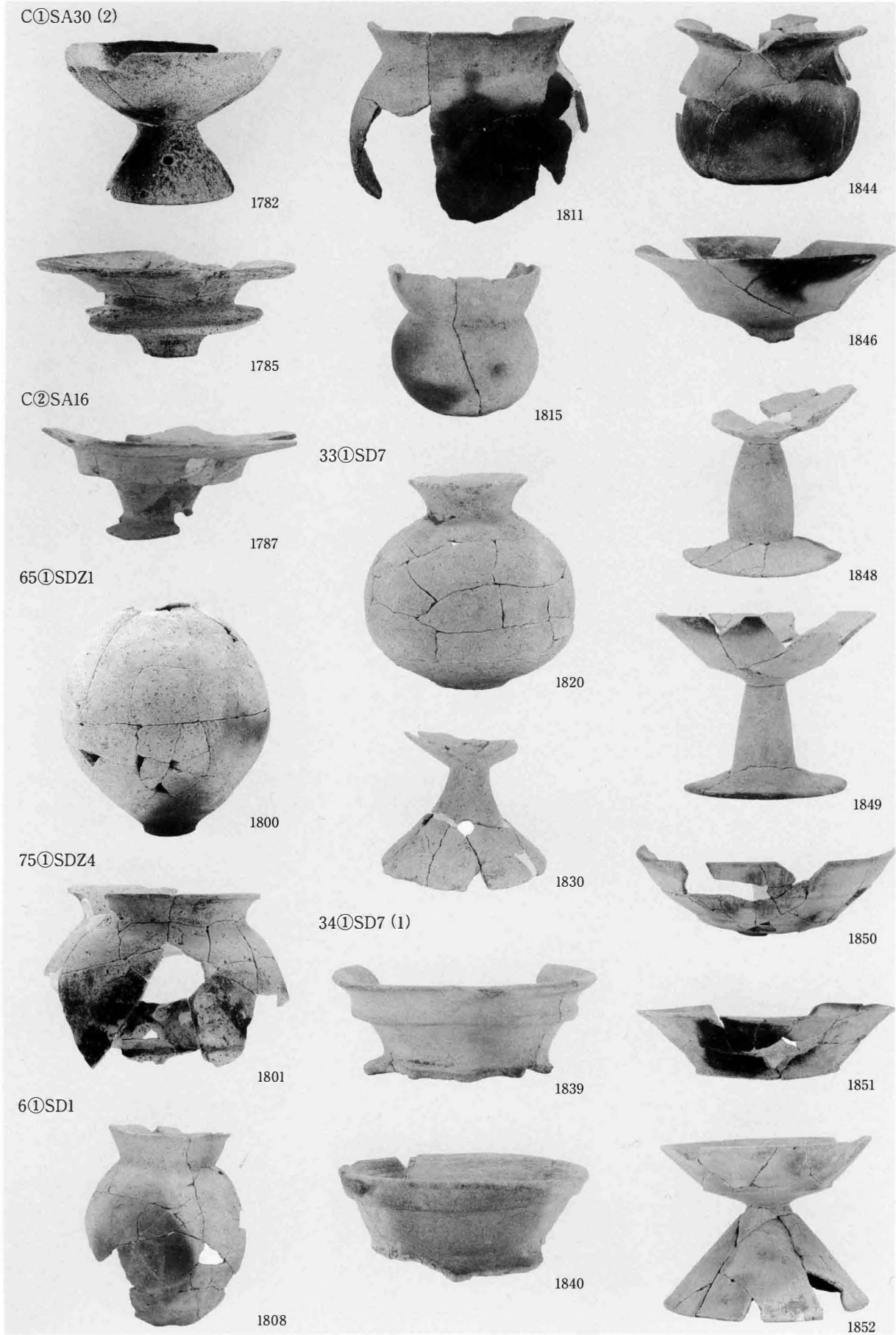
写真図版50 弥生時代後期の遺物 (7)

装身具

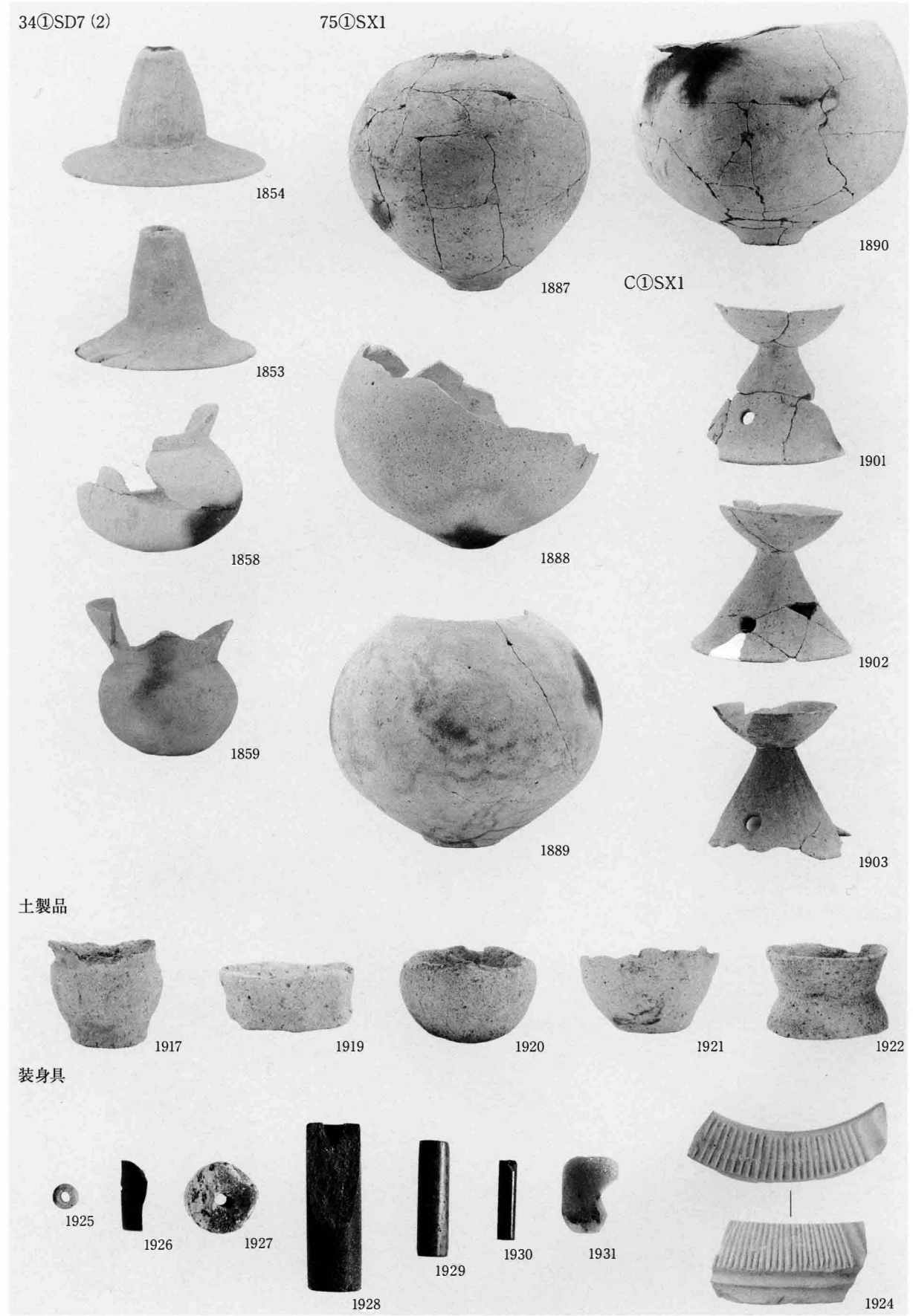


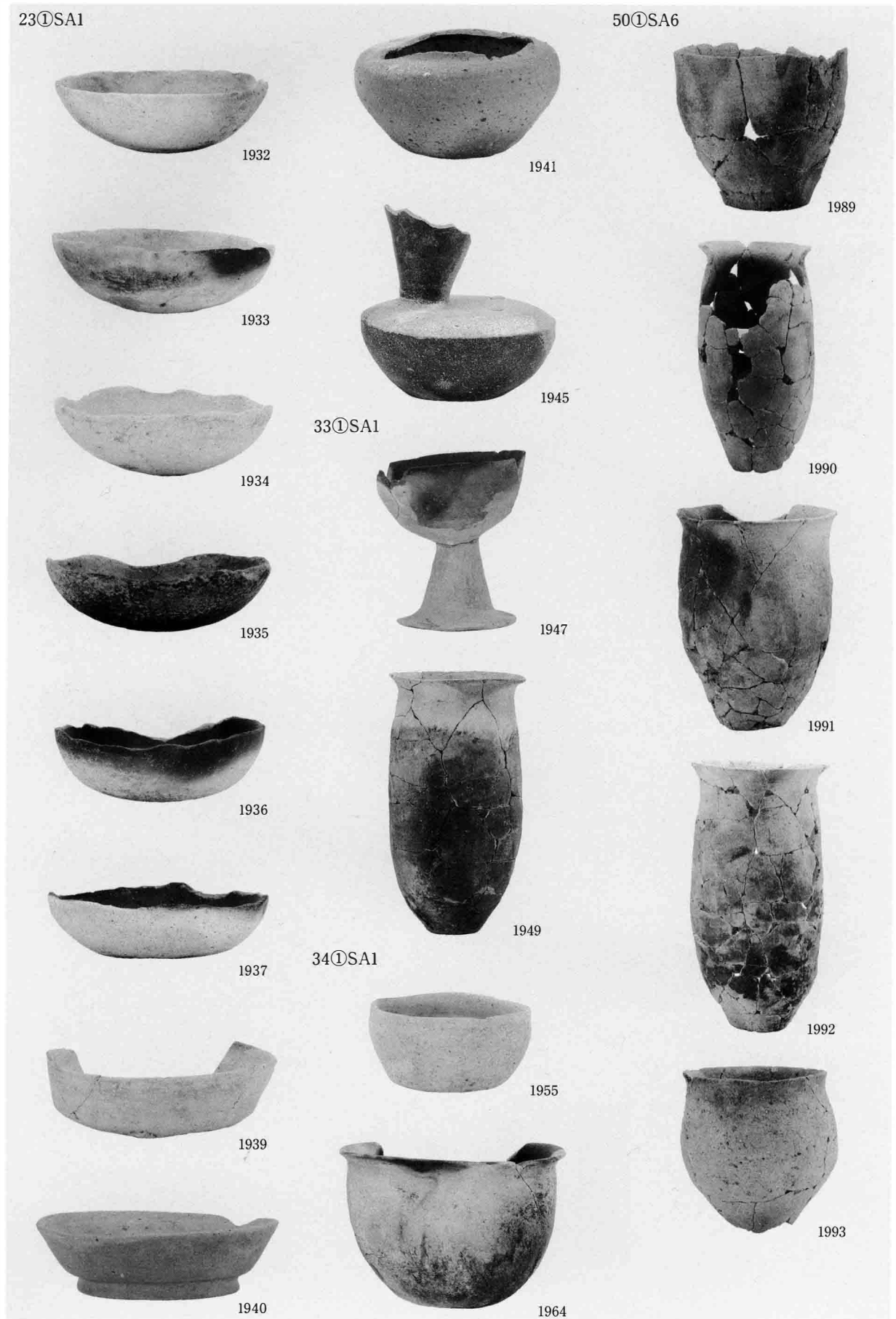
写真図版51 古墳時代前期～中期の遺物 (1)





写真図版53 古墳時代前期～中期の遺物 (3)





写真図版55 古墳時代後期の遺物 (2)

53①SA3



2013



2019



2128



2014



2020



2129



2015

56①SA4



2058



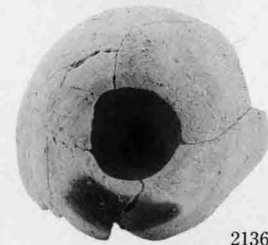
2135



2016



2061



2136



2017

79①SA6



2126



2137



2127

写真図版56 古墳時代後期の遺物 (3)

B①SA5



2151



2154



2155



2157



2159



2160



2161



2181



2182



2193



2194



2195



2196



2206



2207



2208



2209



2213

B①SA11

B①SA16

C①SA2 (1)

写真図版57 古墳時代後期の遺物 (4)

C①SA2 (2)



2217



2219



2220



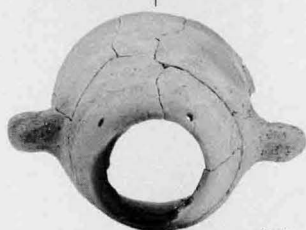
2221



2222



2225



2227

C①SA9



2278



2279



2281



2283



2285

C①SA10



2297



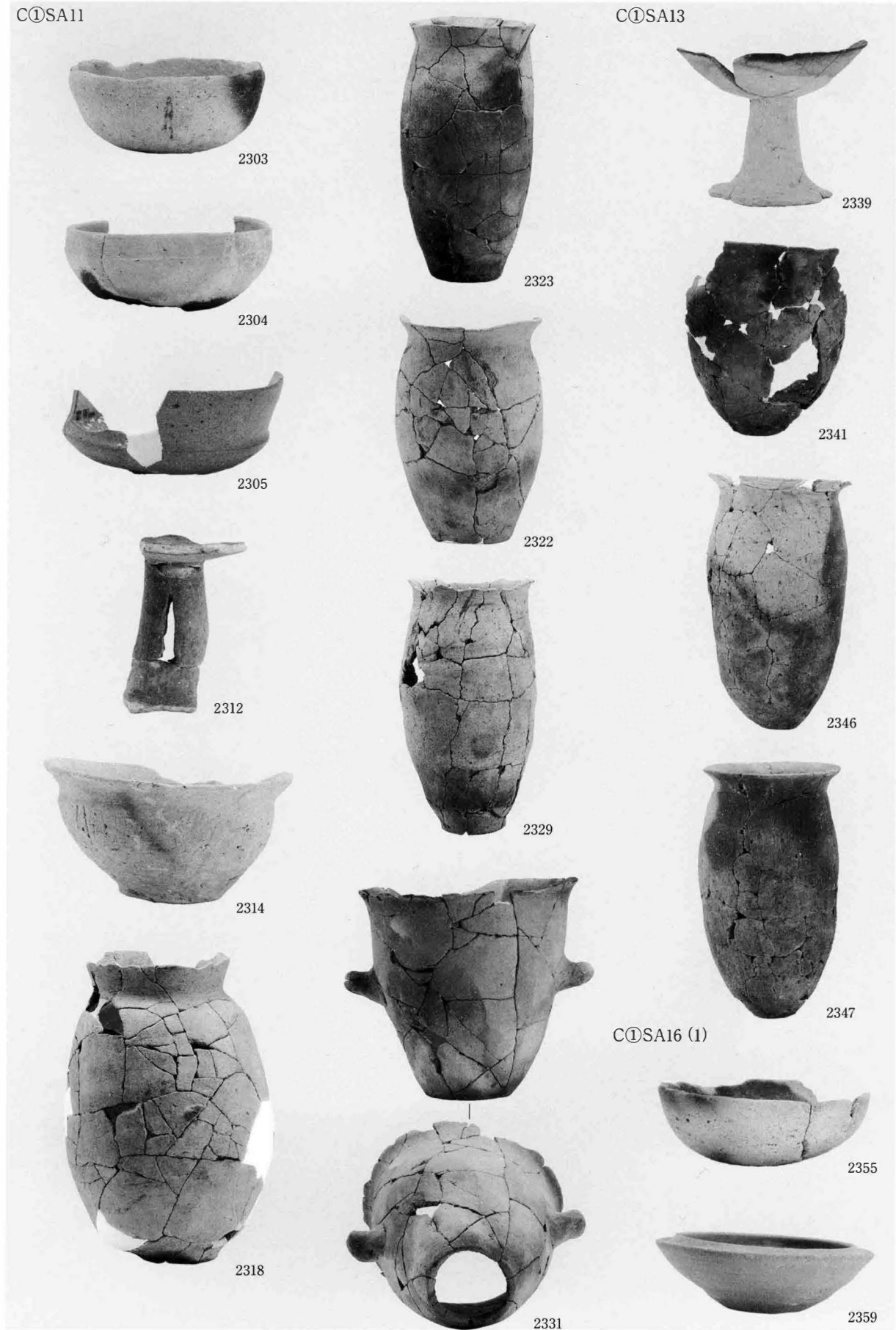
2299



2301



2302



C①SA16 (2)



2362



2368



2401



2363



2369



2402



2364

C①SA19



2393

C①SA21 (1)



2405



2365



2394



2406



2366



2395



2408



2367

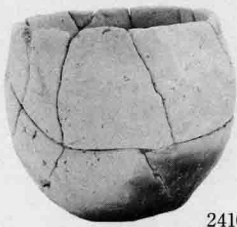


2397

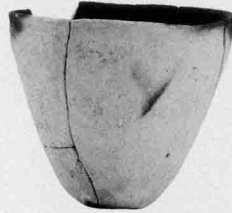


2409

C①SA21 (2)



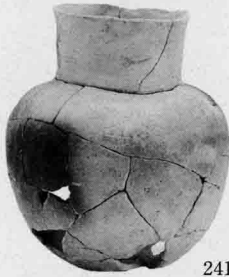
2410



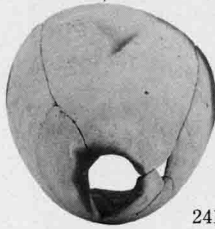
2419



2450



2411



2453



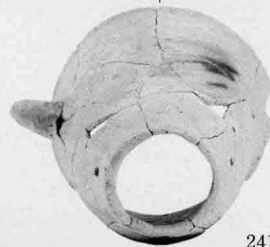
2414



2454



2413



2418



2455

C①SA25



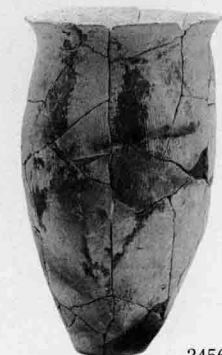
2446



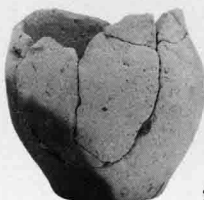
2415



2447



2456



2449

写真図版61 古墳時代後期の遺物 (8)

34①SD2



2507



2524



2538



2557

55①SD3



2526

D①SD1



2532



2559

石製品



2607



2608



2609



2610



2611



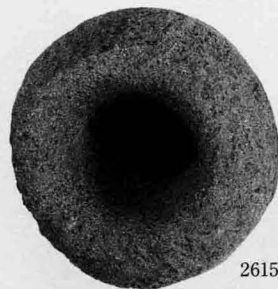
2612



2613



2614



2615



2616

写真図版62 古墳時代後期の遺物 (9)、平安時代以降の遺物、時期不明の遺物



長野市の埋蔵文化財第105集

浅川扇状地遺跡群
檀田遺跡（2）

長野市檀田土地区画整理事業
（仮称）西友檀田店店舗建設工事
アクロスプラザ長野北建設工事
にともなう埋蔵文化財発掘調査報告書
第2分冊（図版編）

平成16年3月18日 印刷

平成16年3月22日 発行

編集 長野市教育委員会
発行 文化財課埋蔵文化財センター
印刷 信毎書籍印刷株式会社