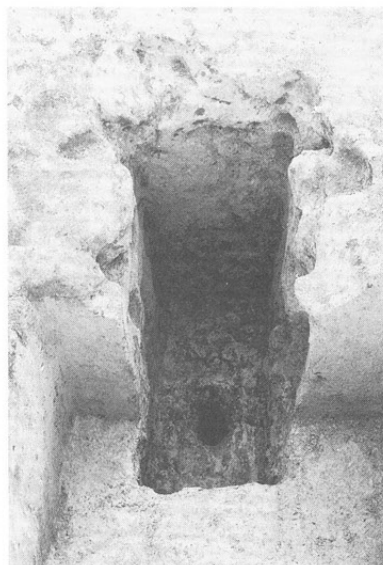




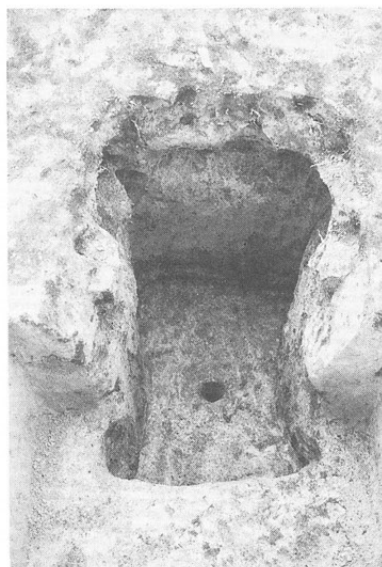
SK 22



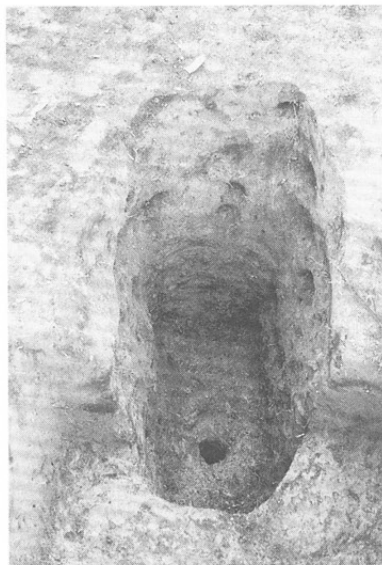
SK 23



SK 27



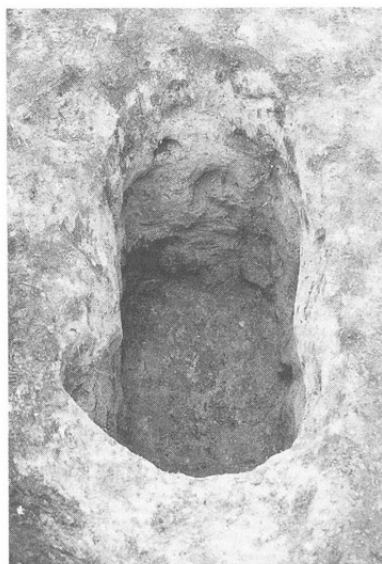
SK 28



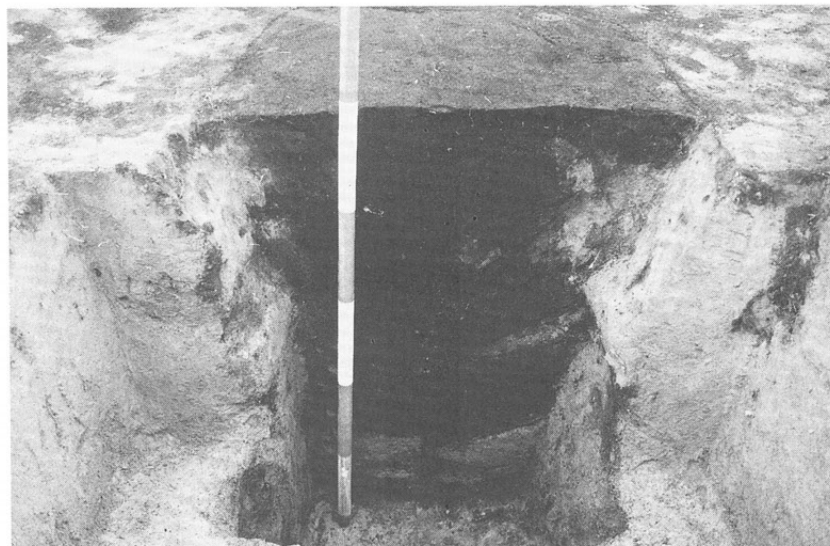
SK 30



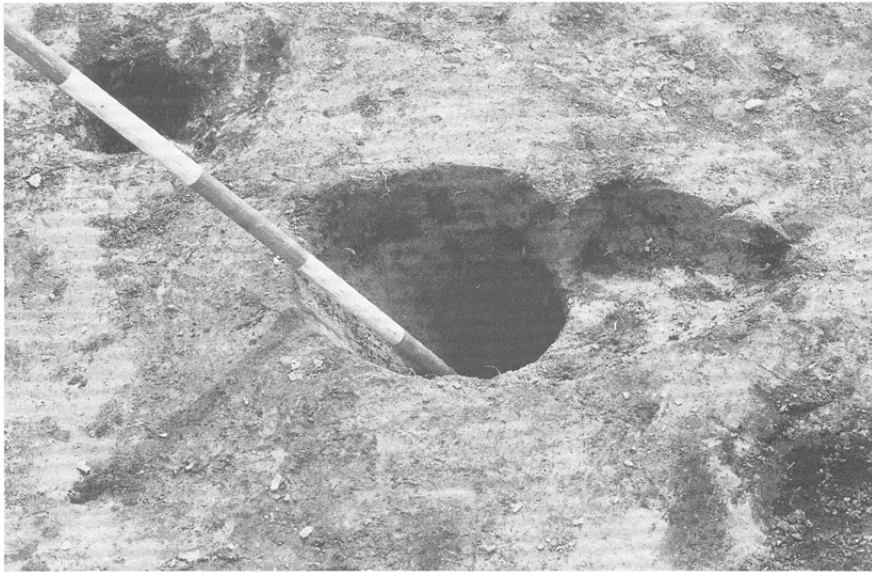
SK 33



SK 37



SK 28 土層断面



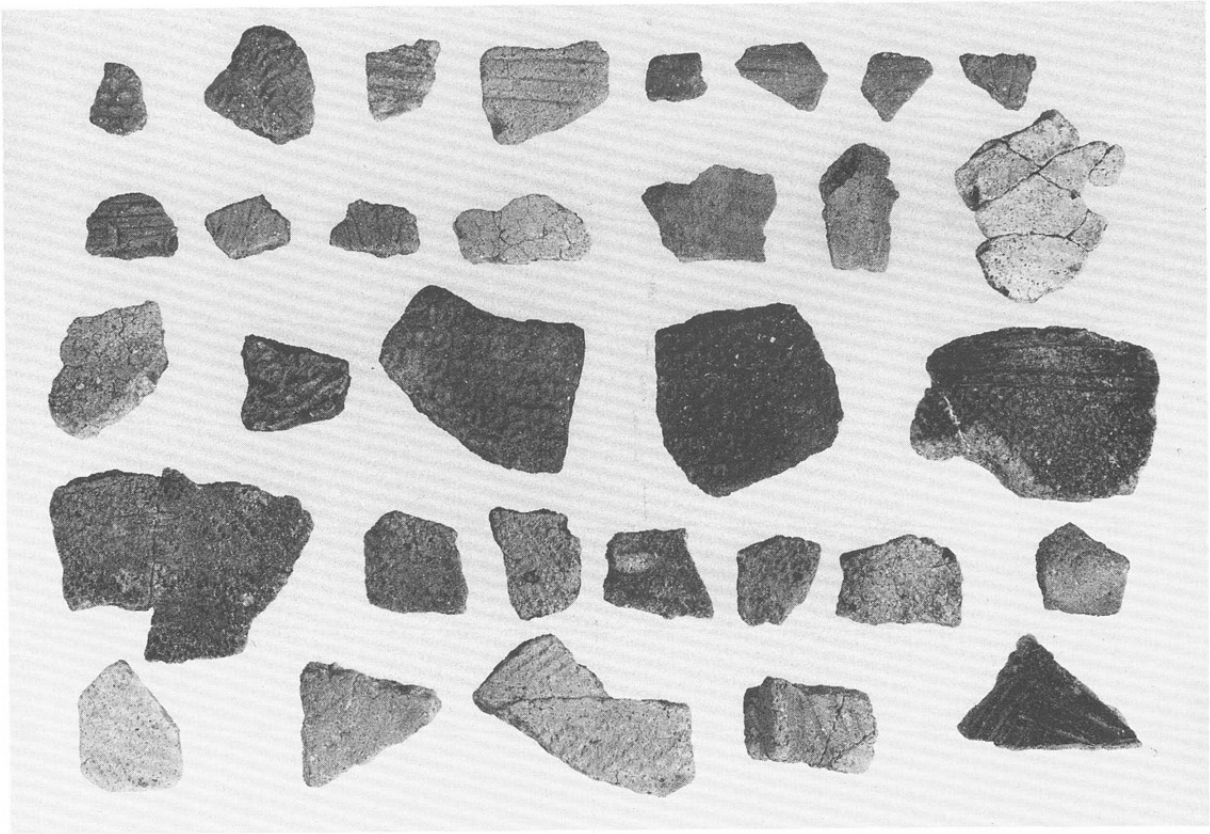
◀ 斜めピット



◀ 斜めピット

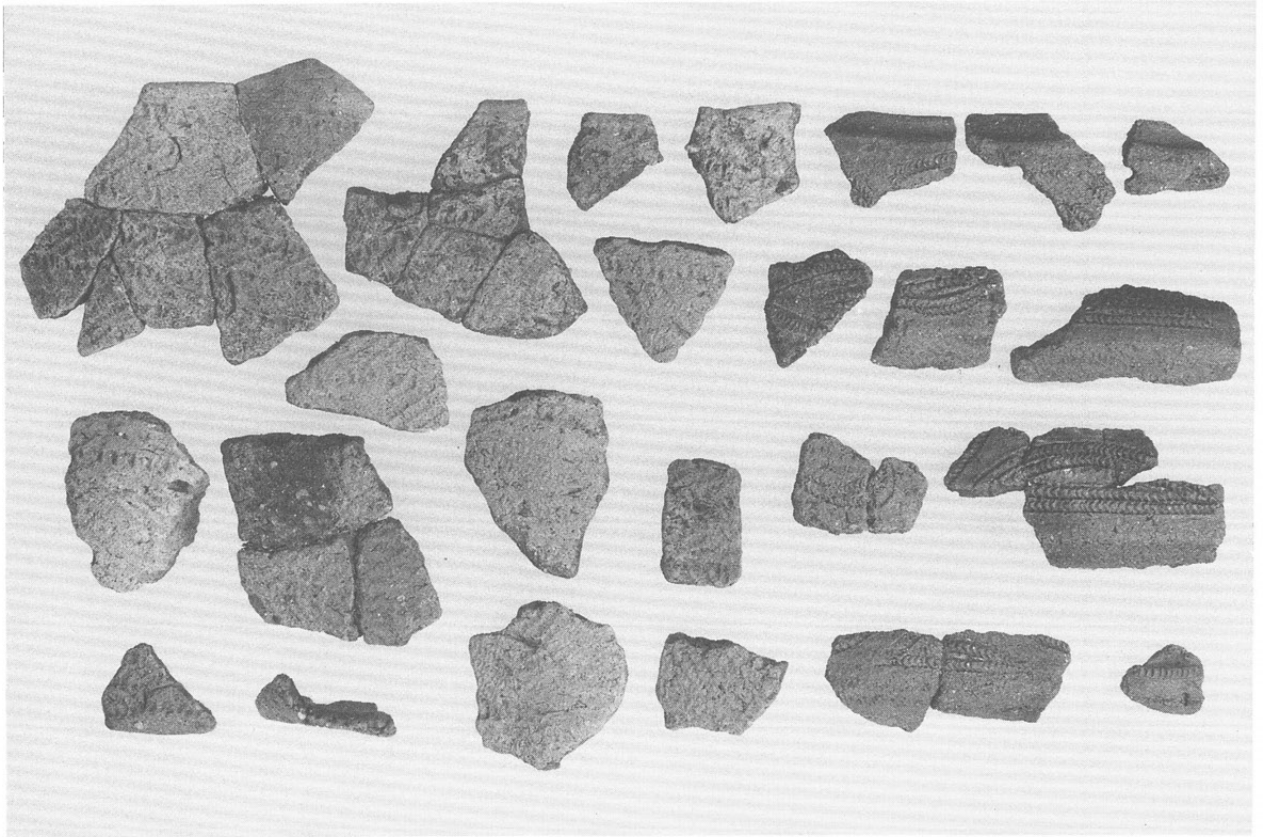


◀ 斜めピット

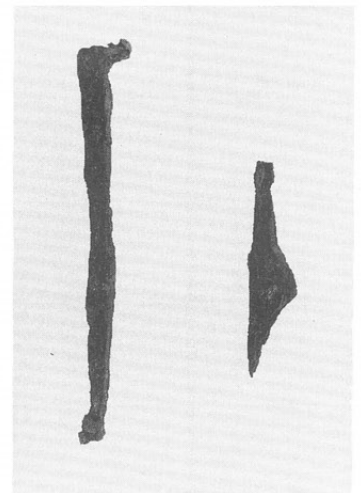
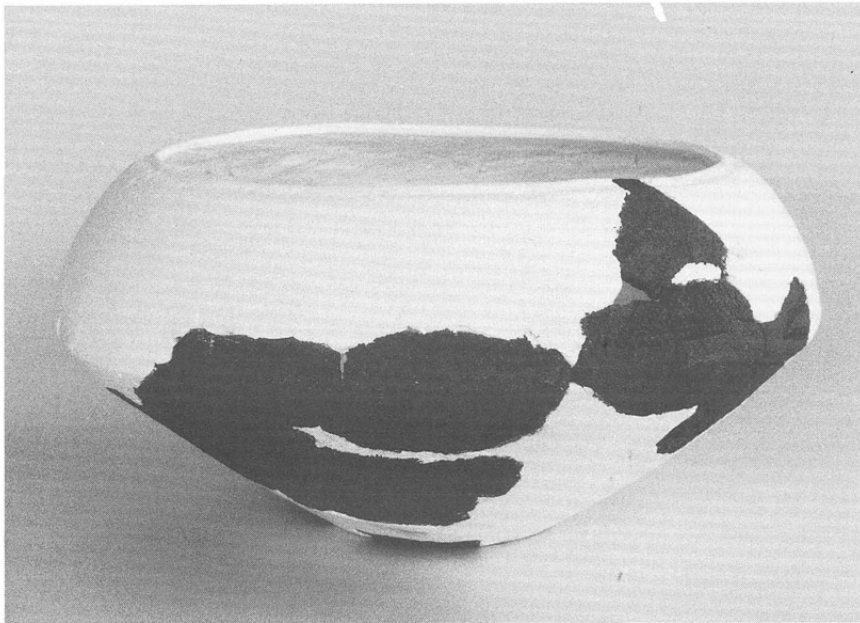


縄文時代の土器

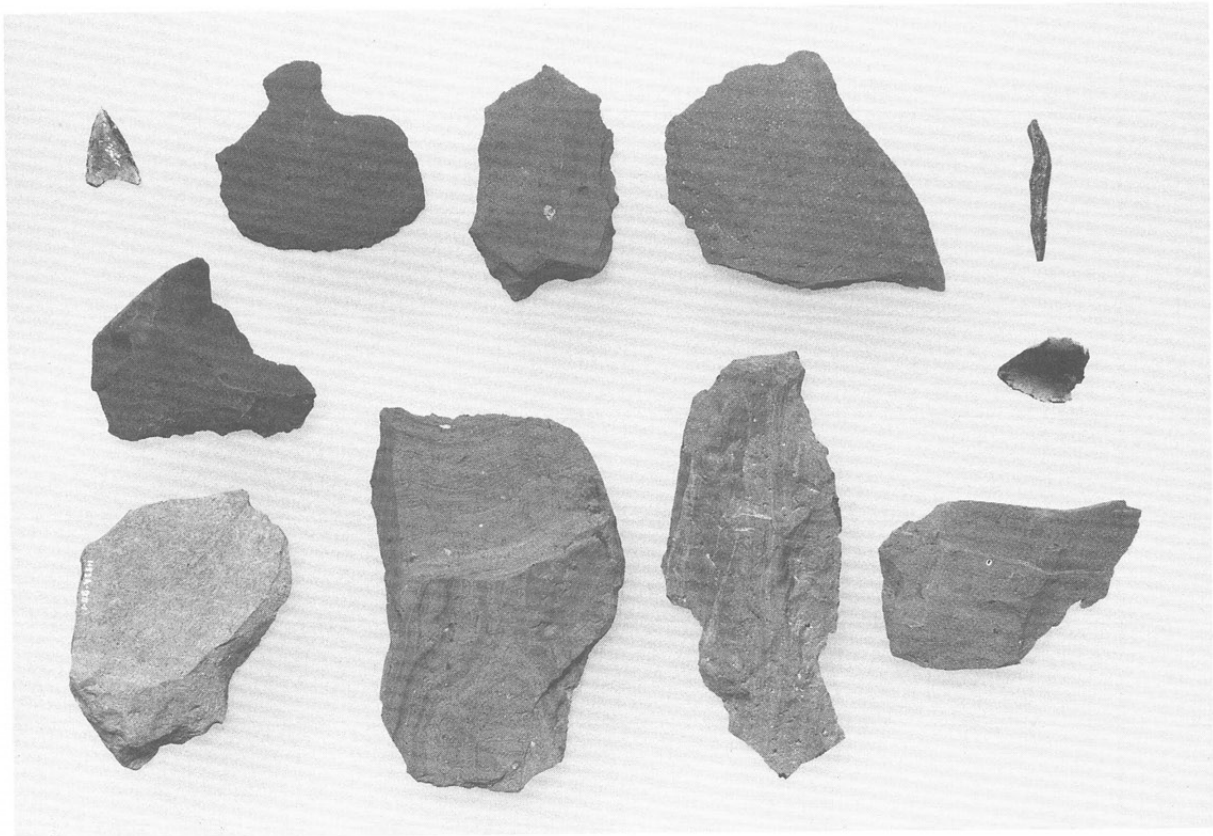




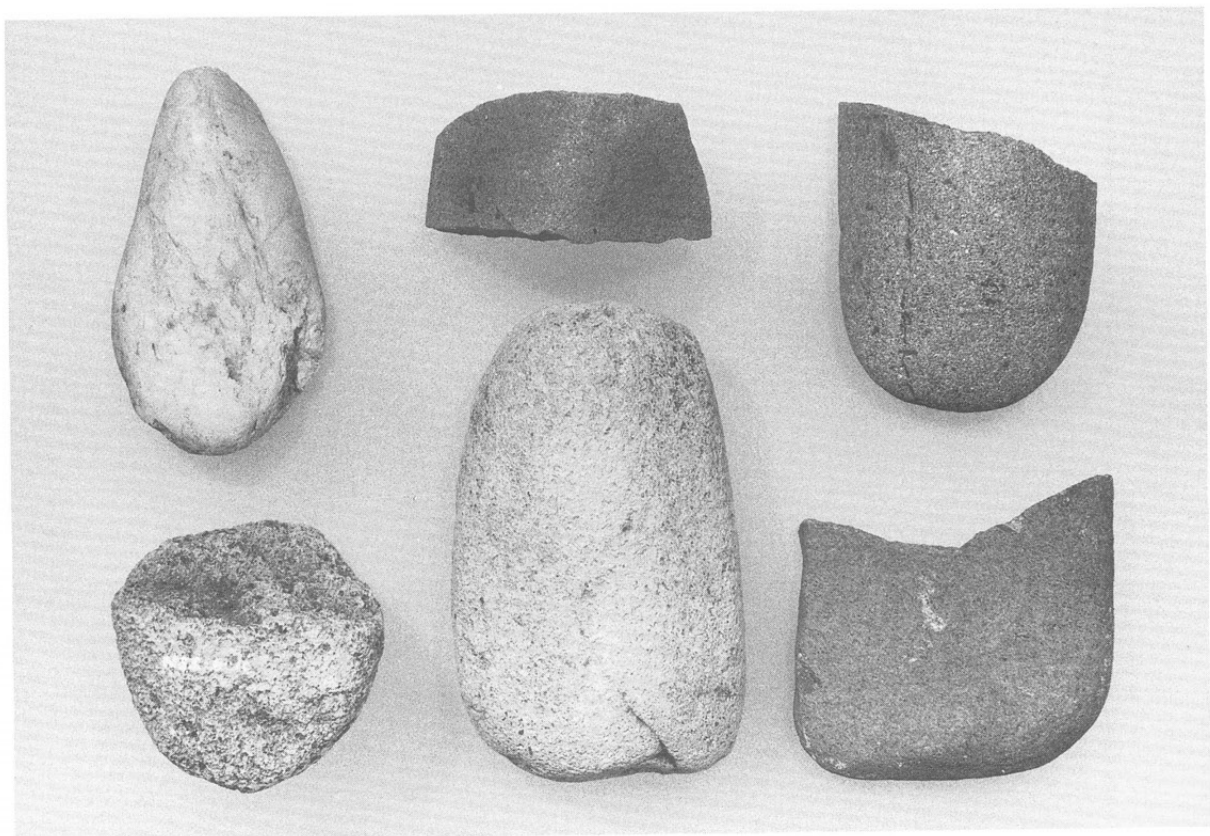
縄文時代の土器



時代不明の角クギ



縄文時代の石器





▲ 鳴沢頭I遺跡よりII遺跡を望む

▼ 重機による表土除去作業

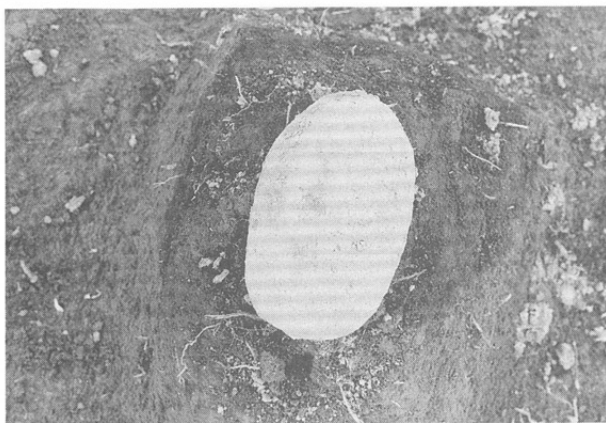
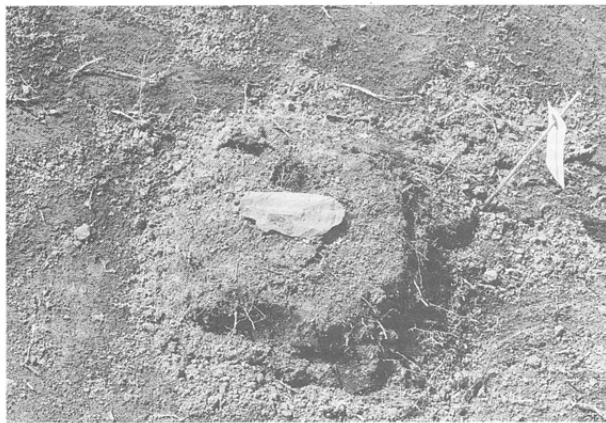
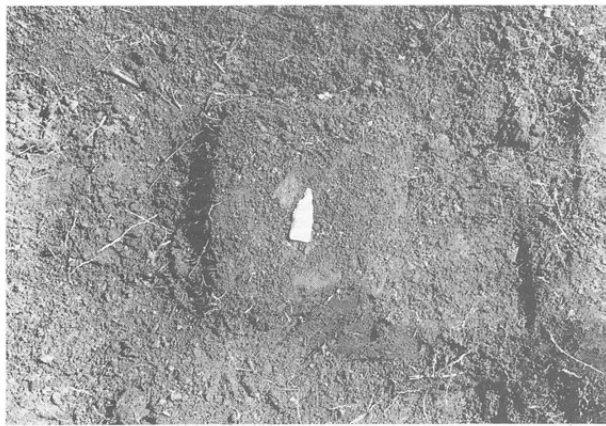




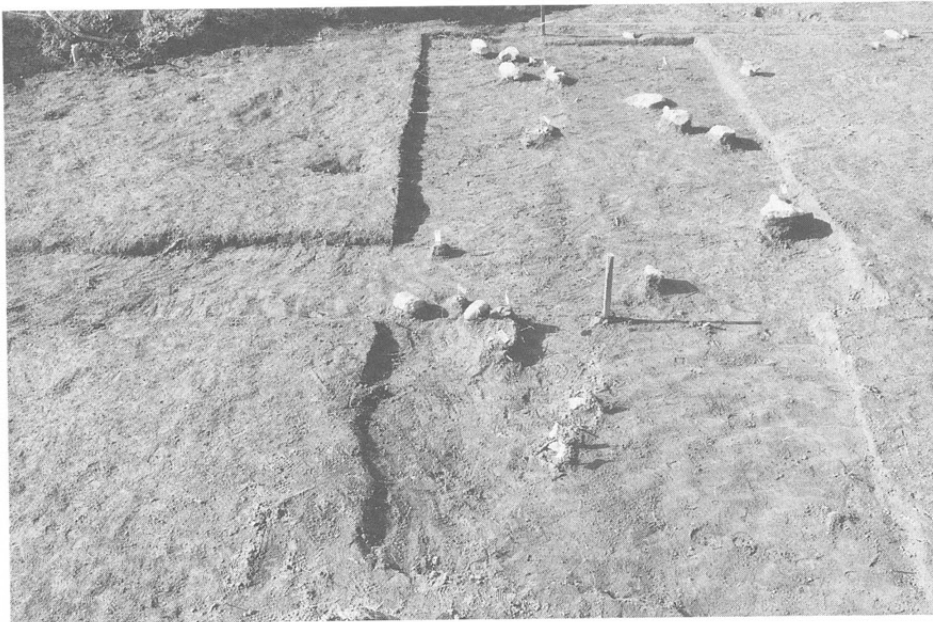
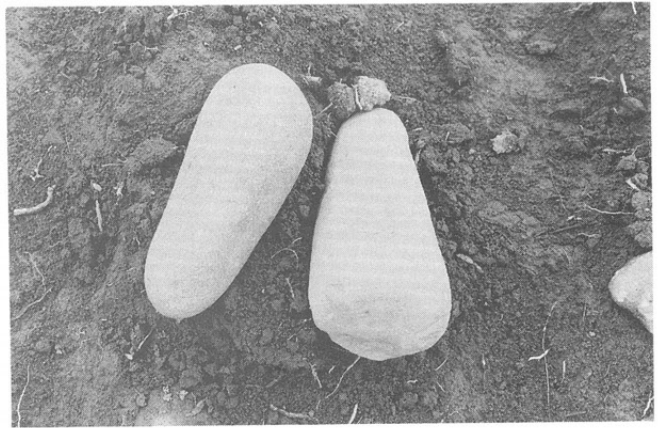
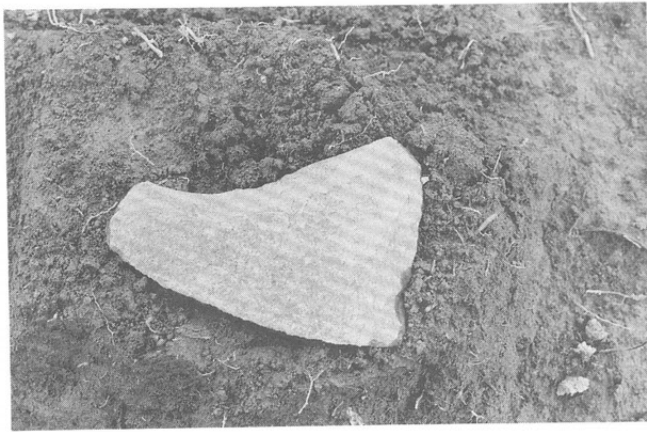
▲ 調査風景

▼ 遺物出土状態

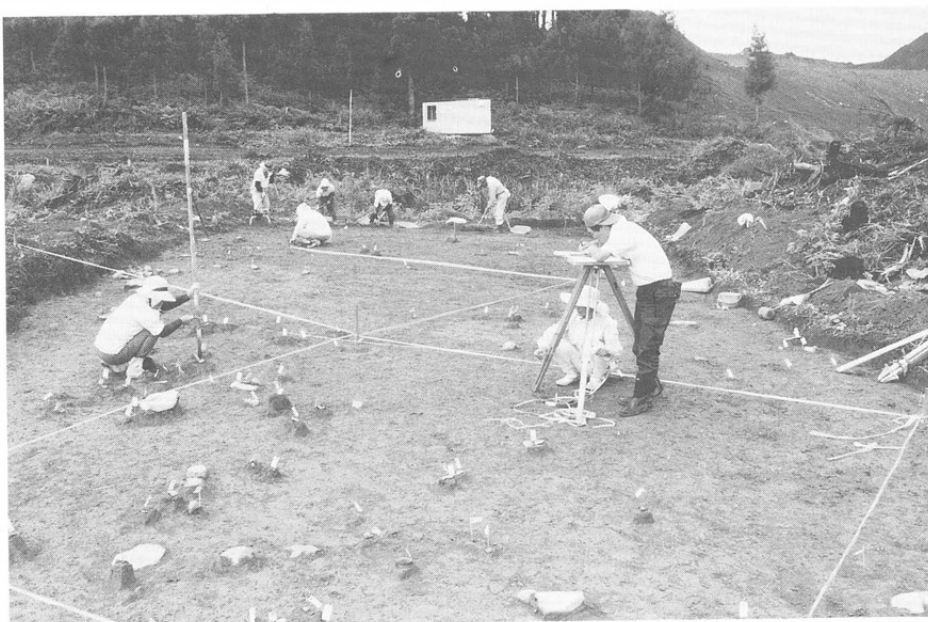




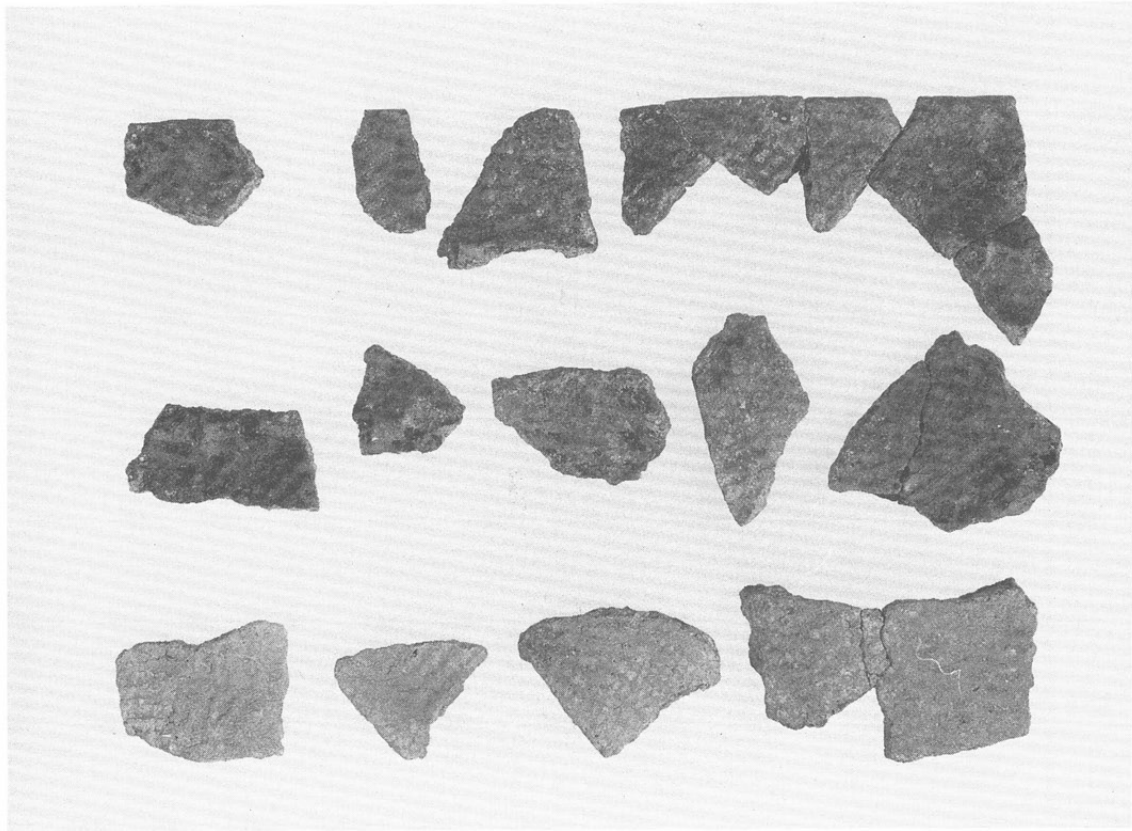
▲ 遺物出土状態



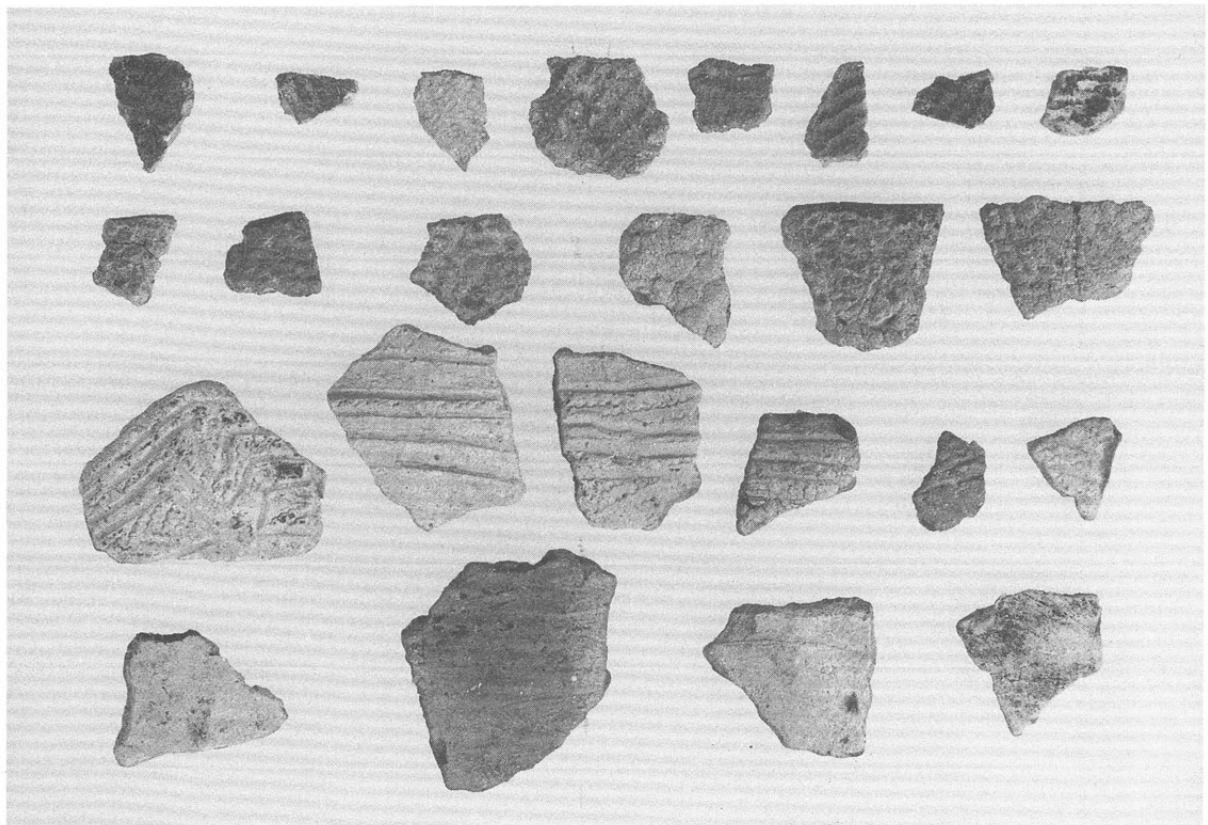
◀ 下層の調査

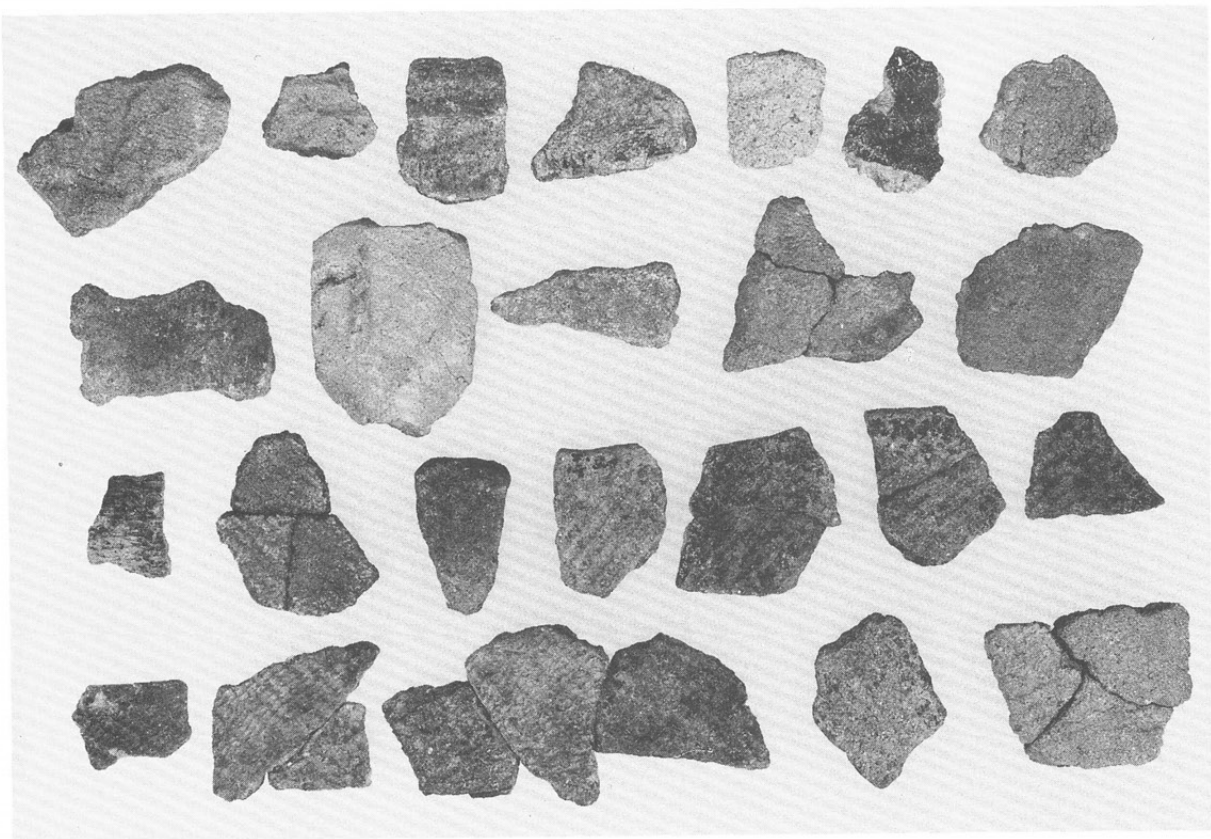


◀ 測量風景



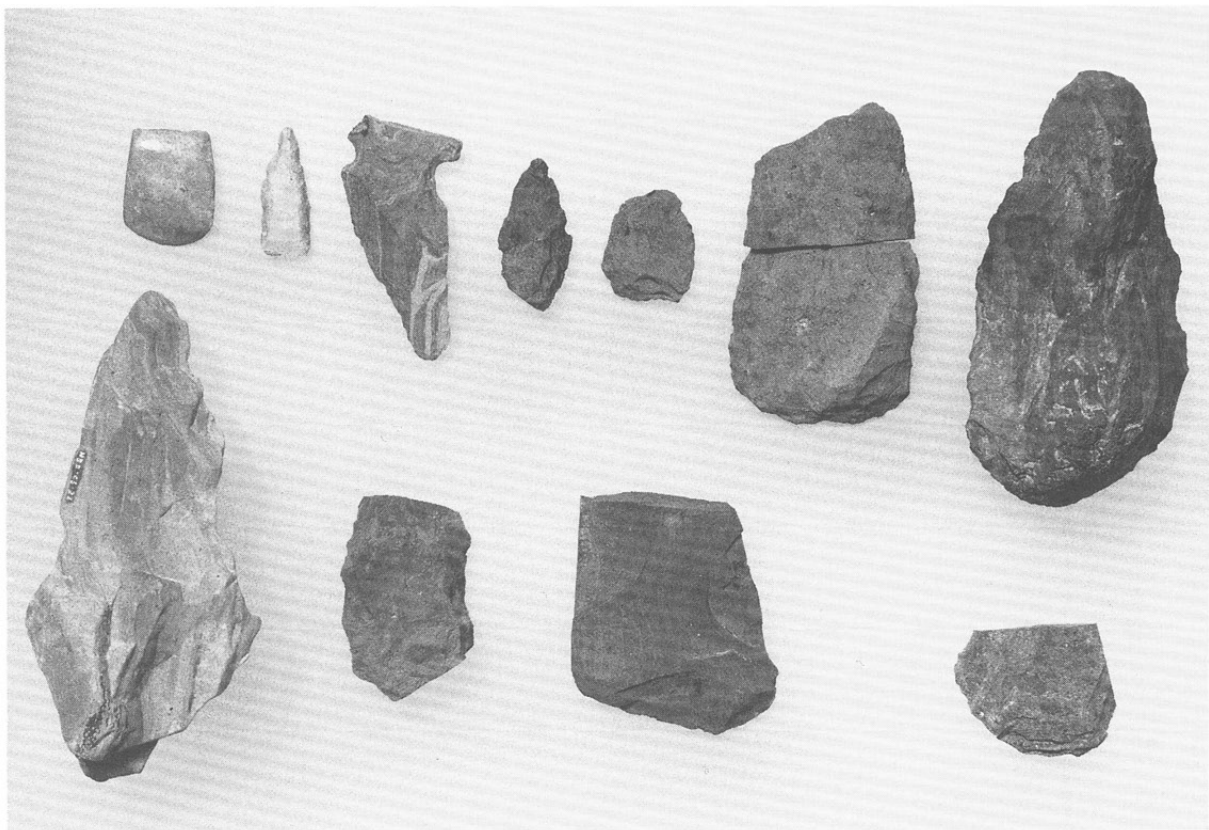
縄文時代の土器



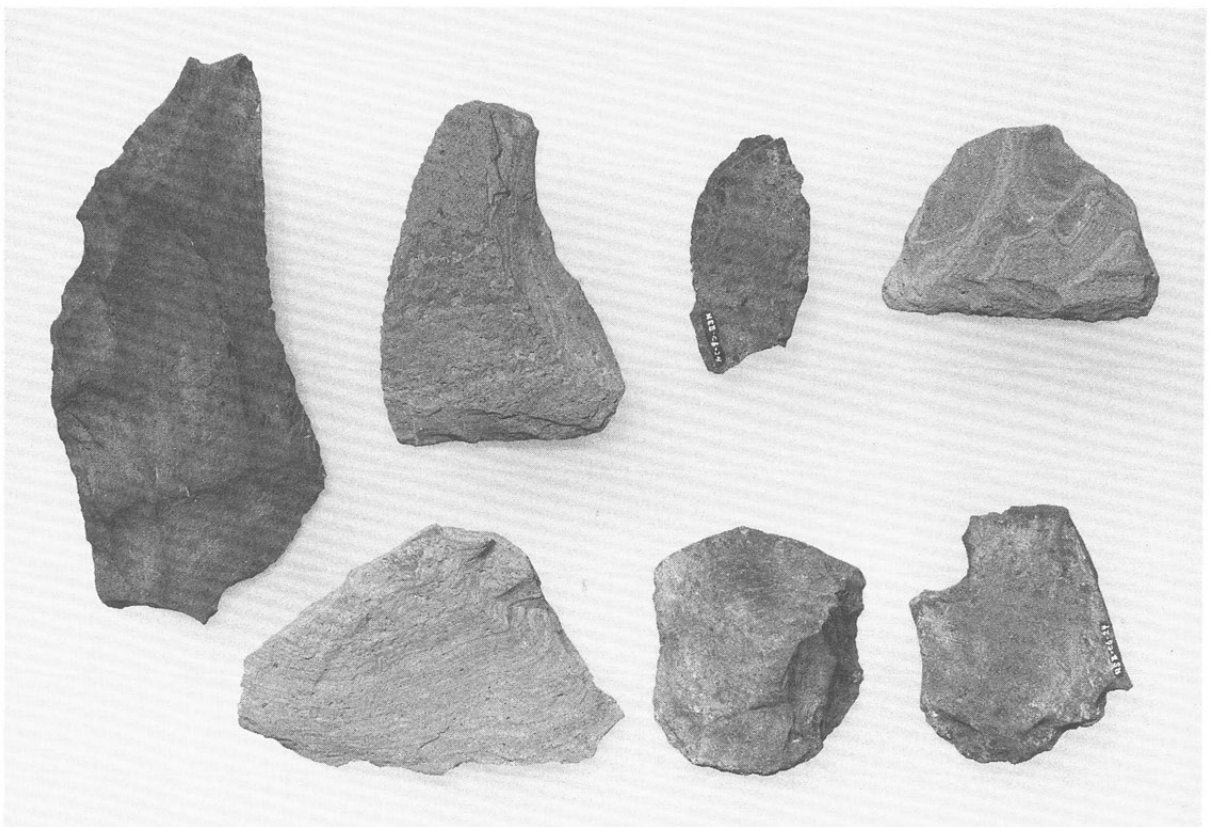


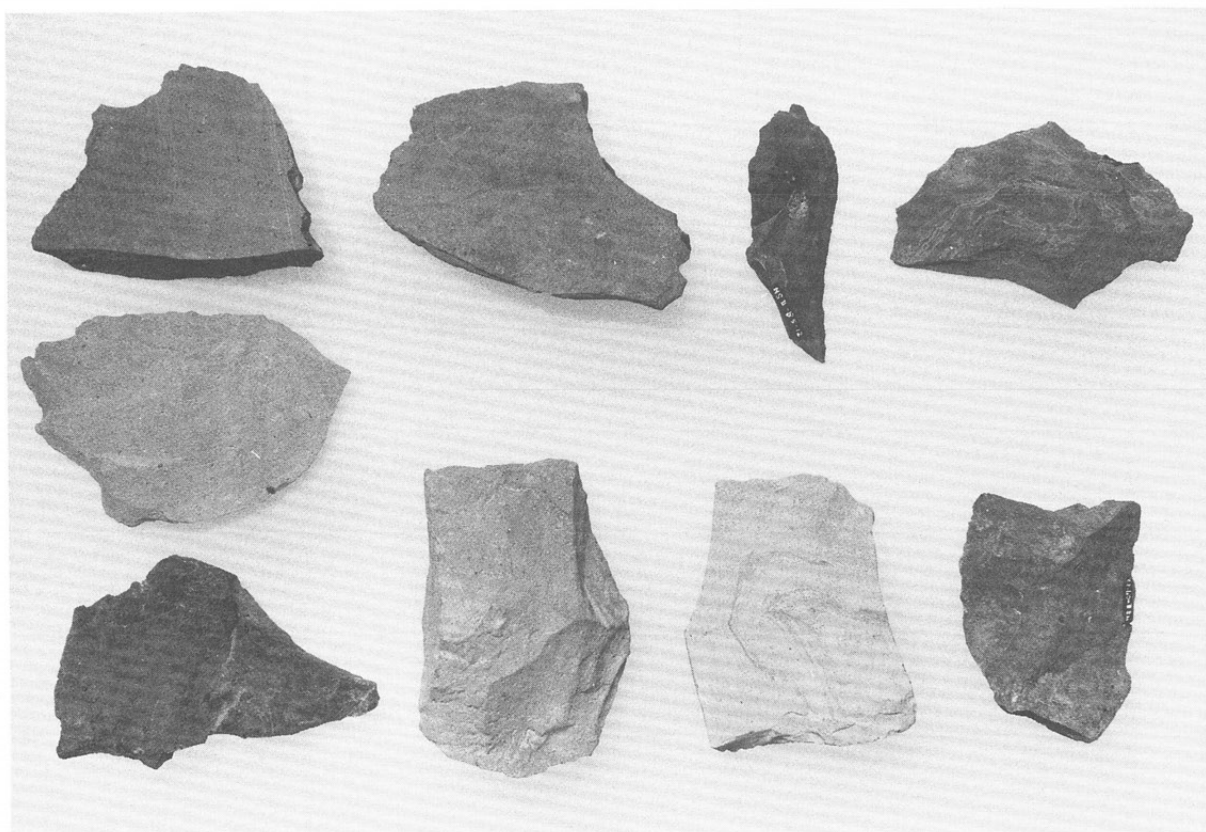
縄文時代の土器



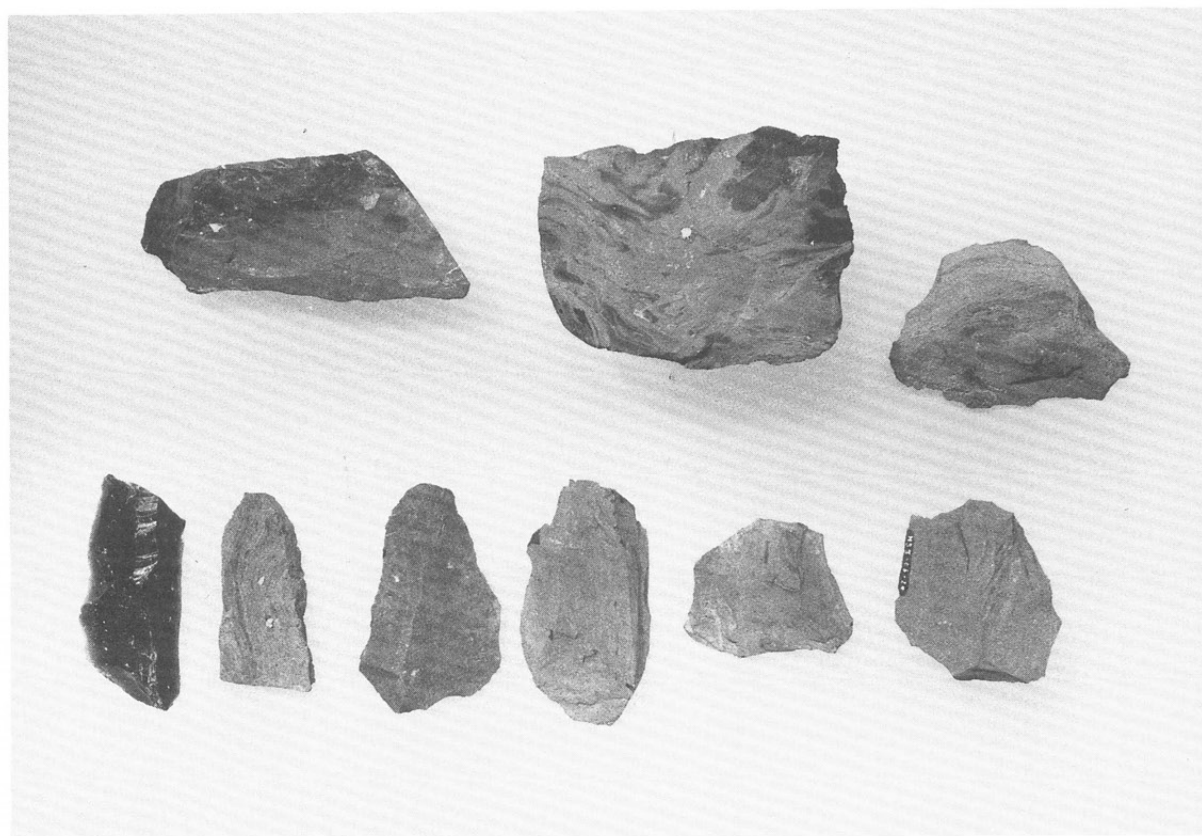


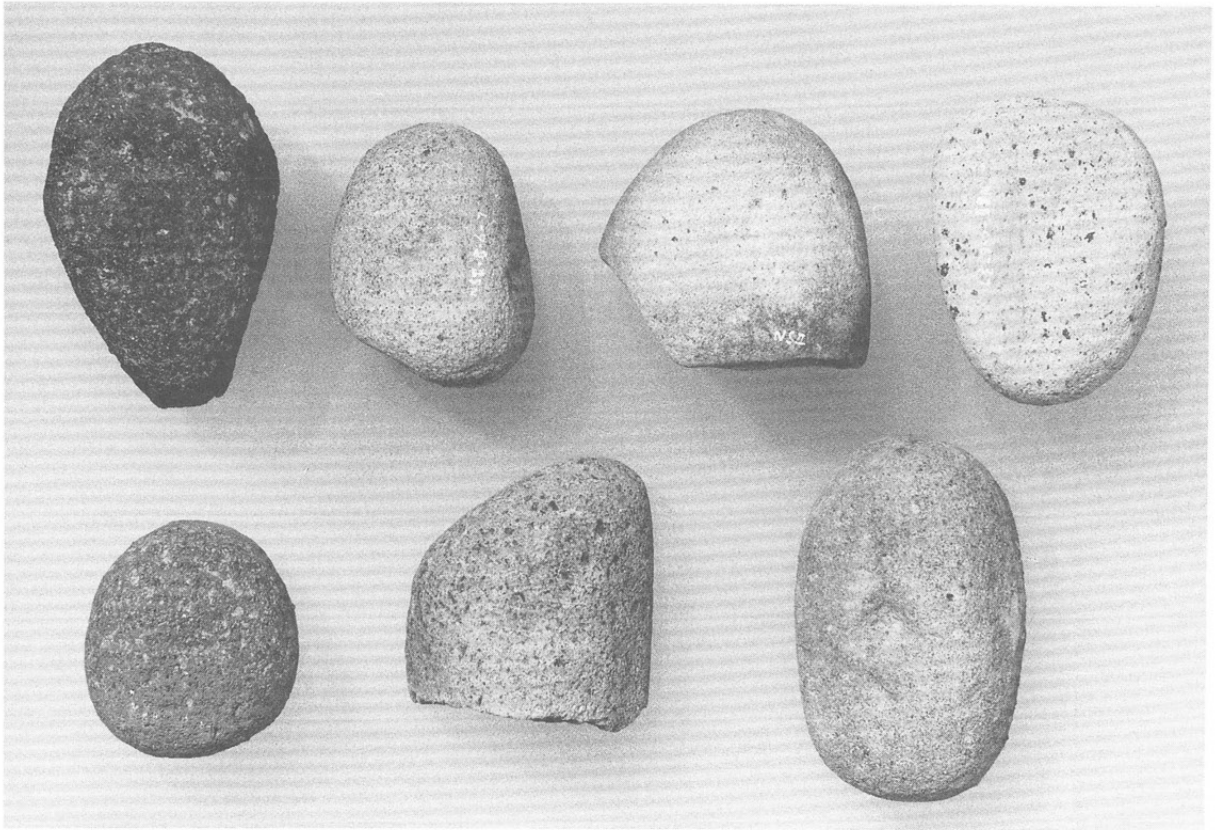
縄文時代の石器





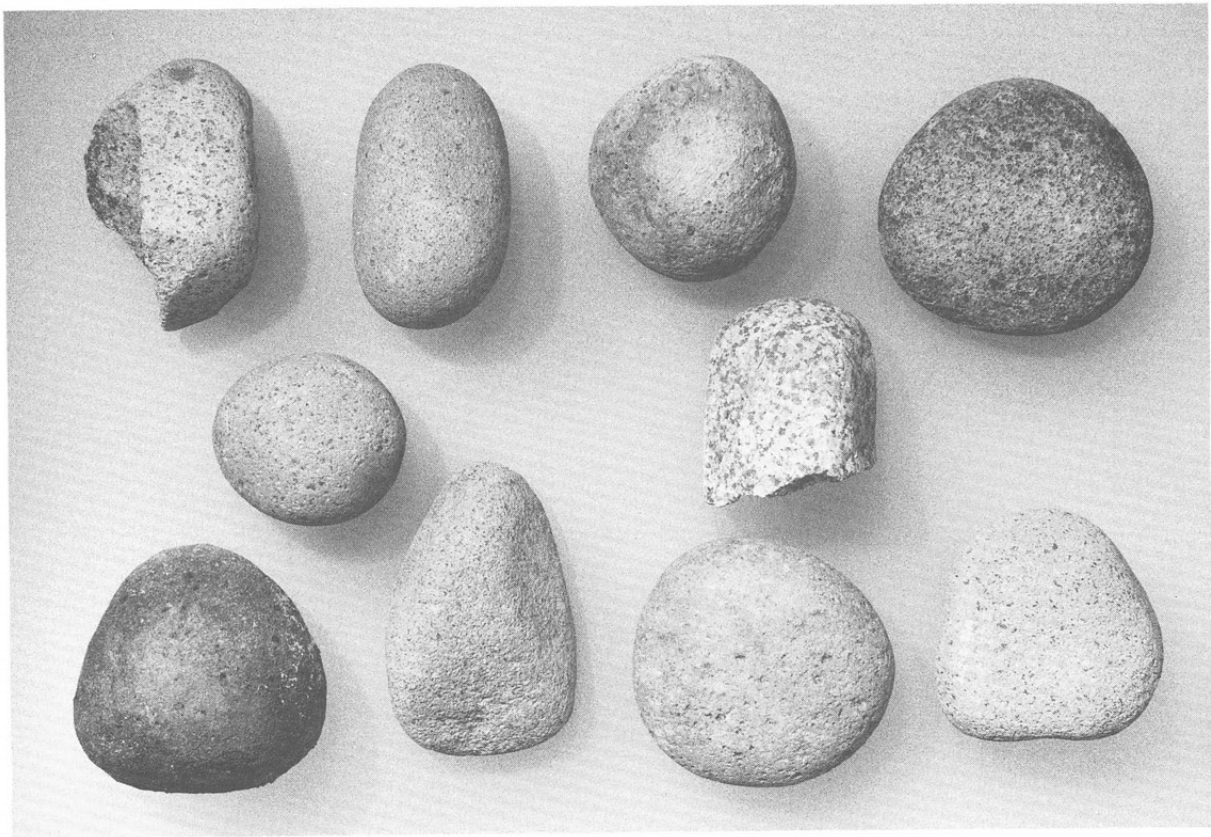
縄文時代の石器



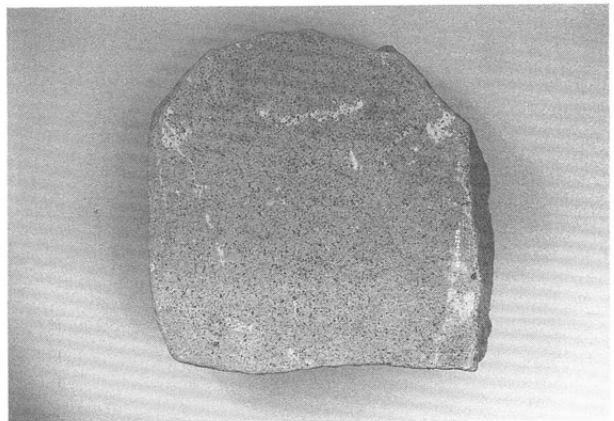
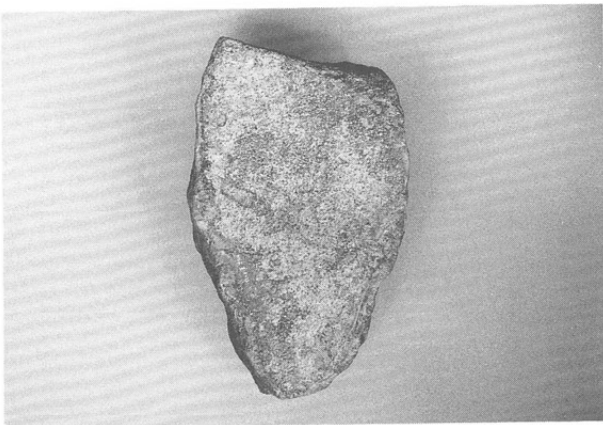
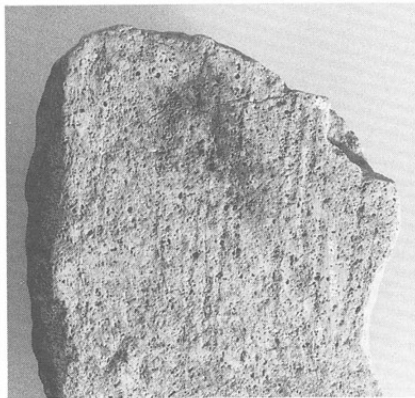
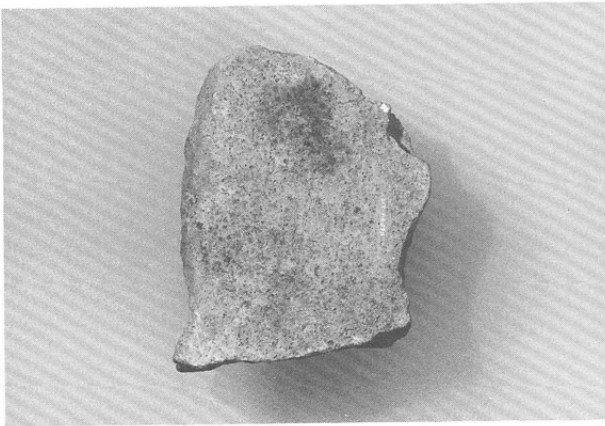


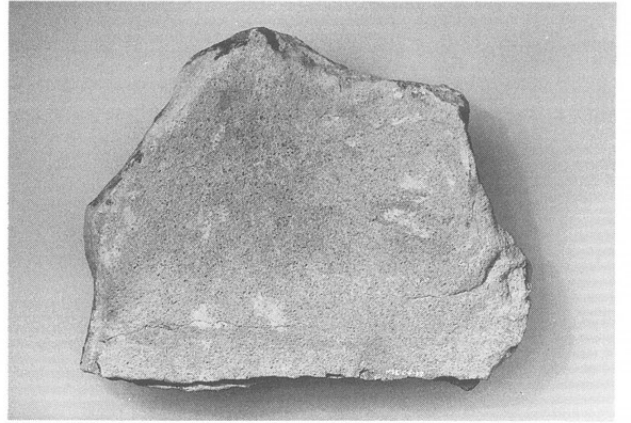
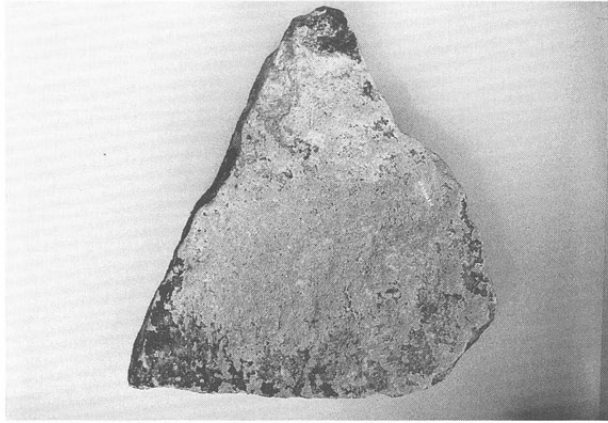
縄文時代の石器





縄文時代の石器



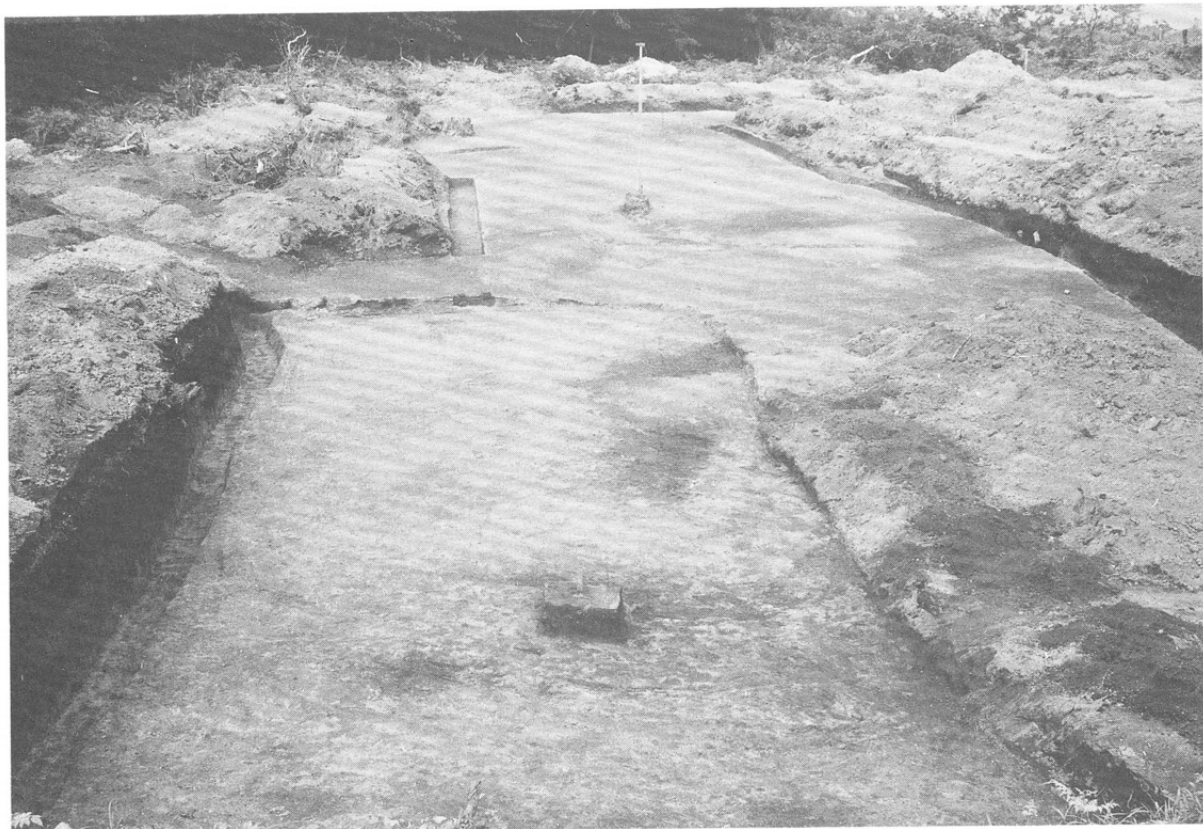


縄文時代の石器



▲ 重機による表土除去作業

▼ DEF 1~8 完掘状態





◀ 遺物出土により調査地拡張



◀ 調査風景



◀ 縄文土器出土状態
(SK1)



◀ 地山掘り下げ旧石器調査



◀ 地山掘り下げ旧石器調査



◀ 測量調査風景



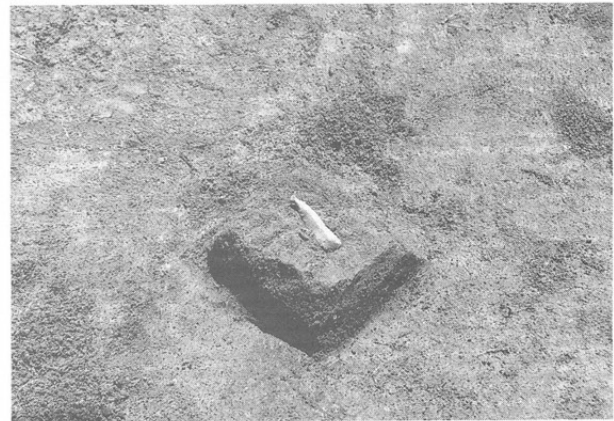
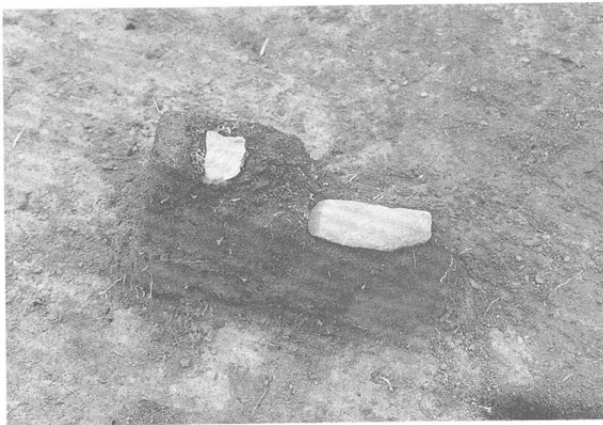
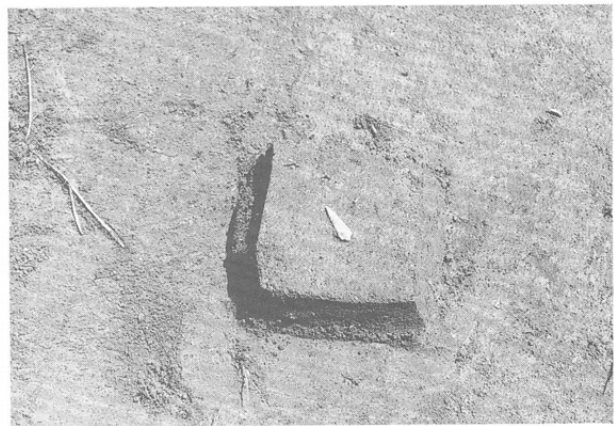
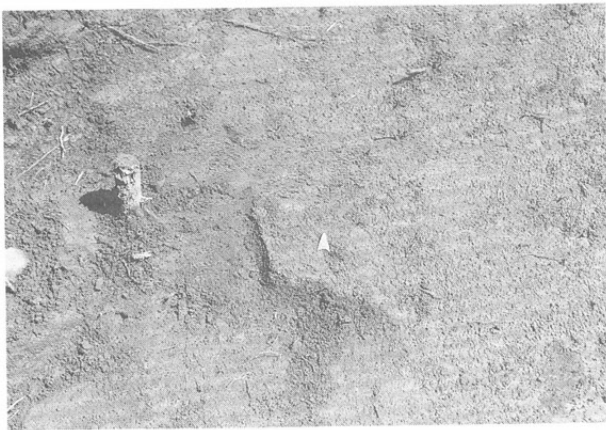
◀ 縄文土器出土状態



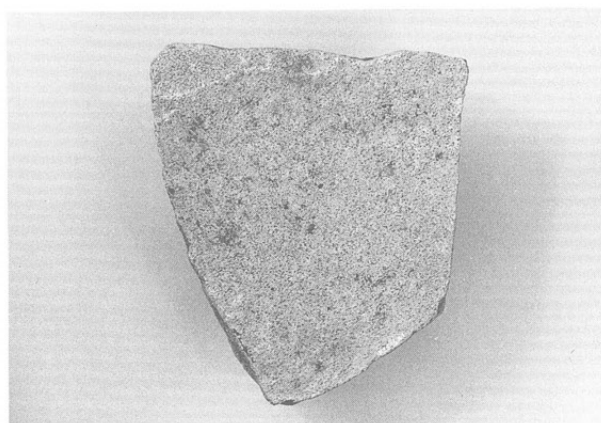
◀ 縄文土器出土状態



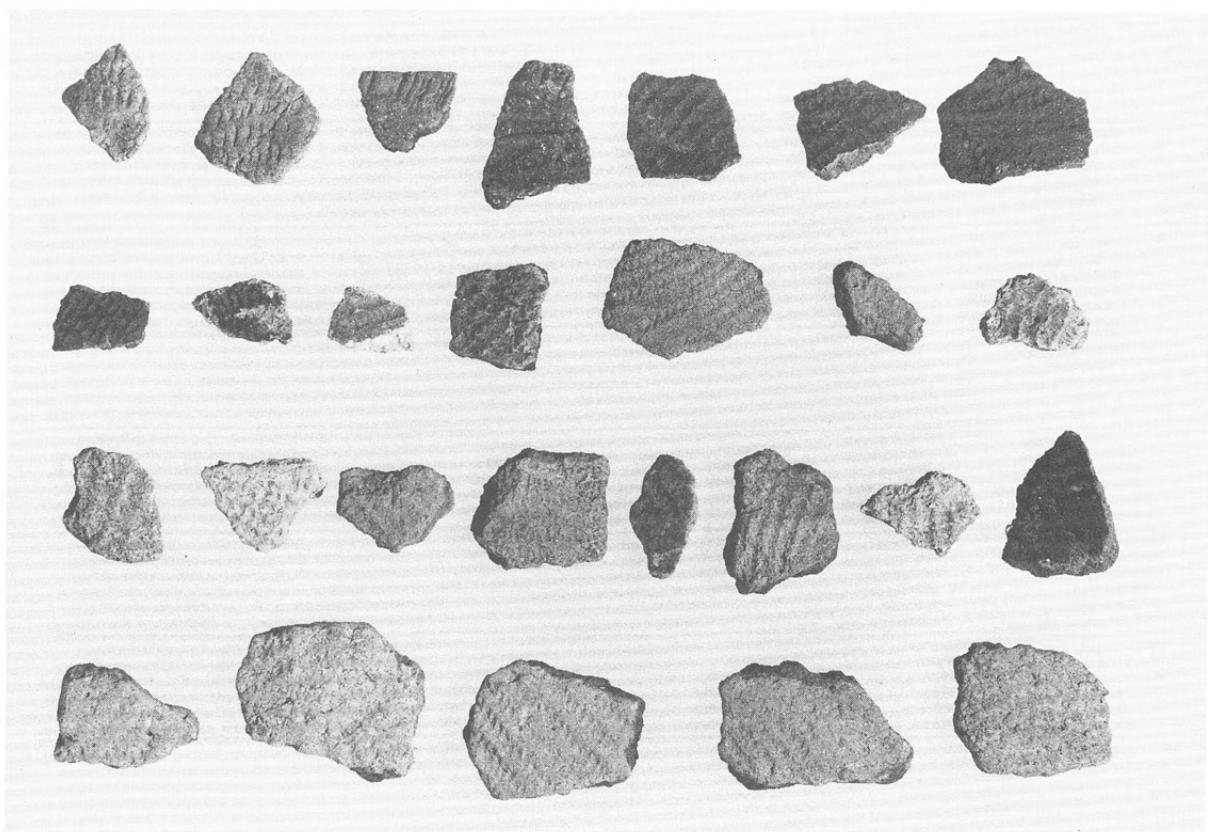
◀ 縄文土器出土状態
(SK1)



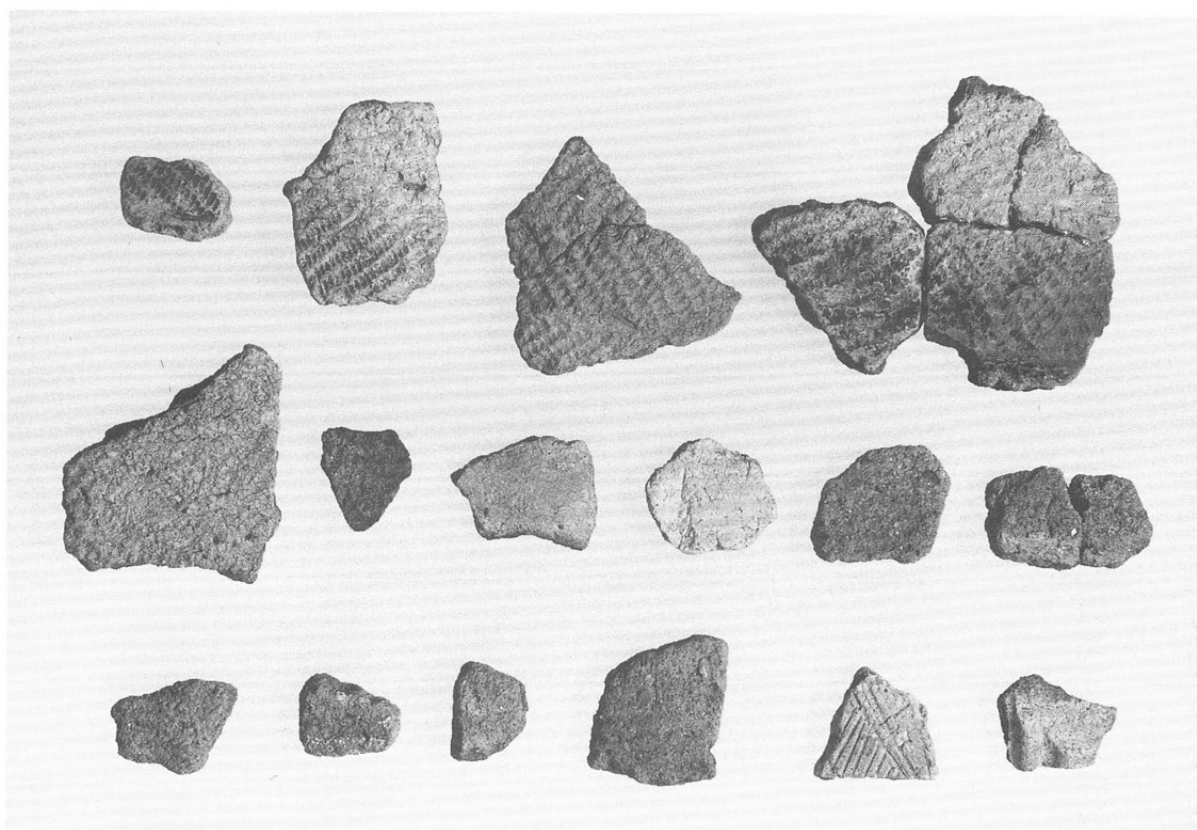
▲ 遺物出土状態

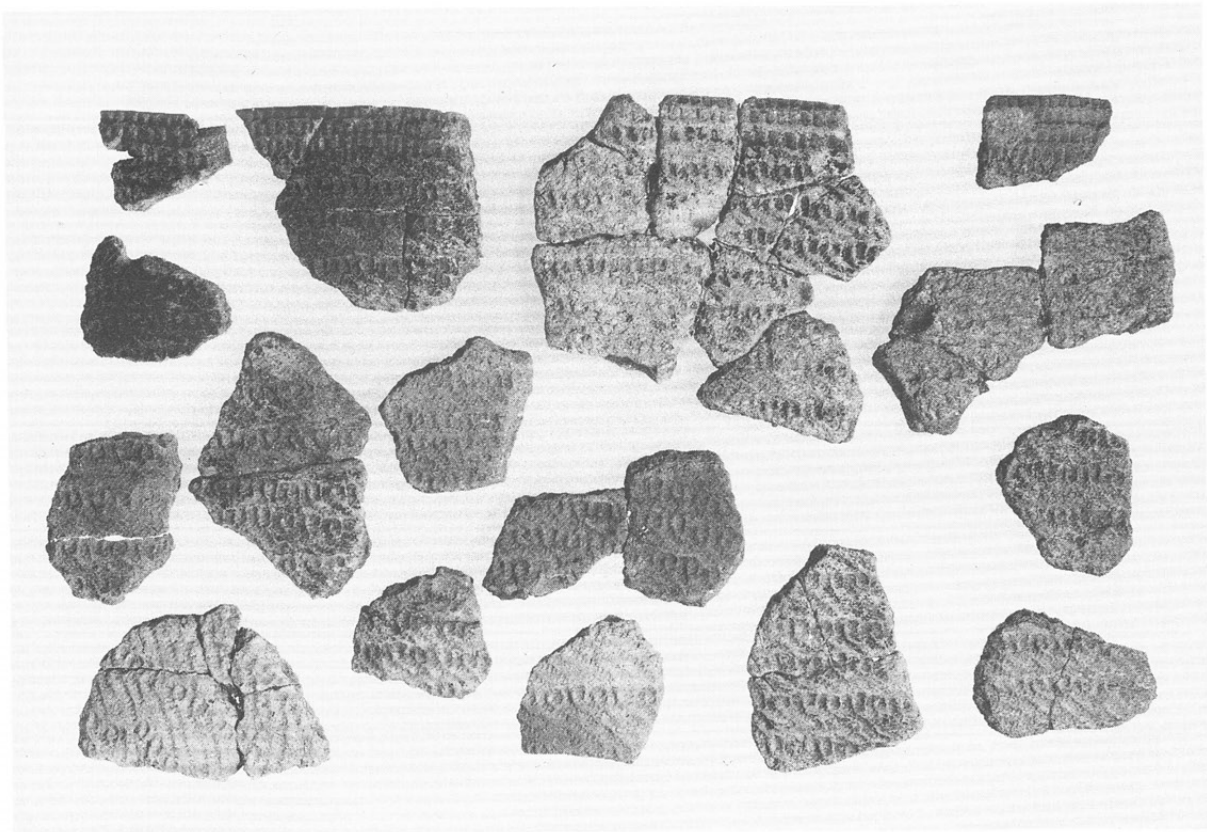


◀ 板状の石皿



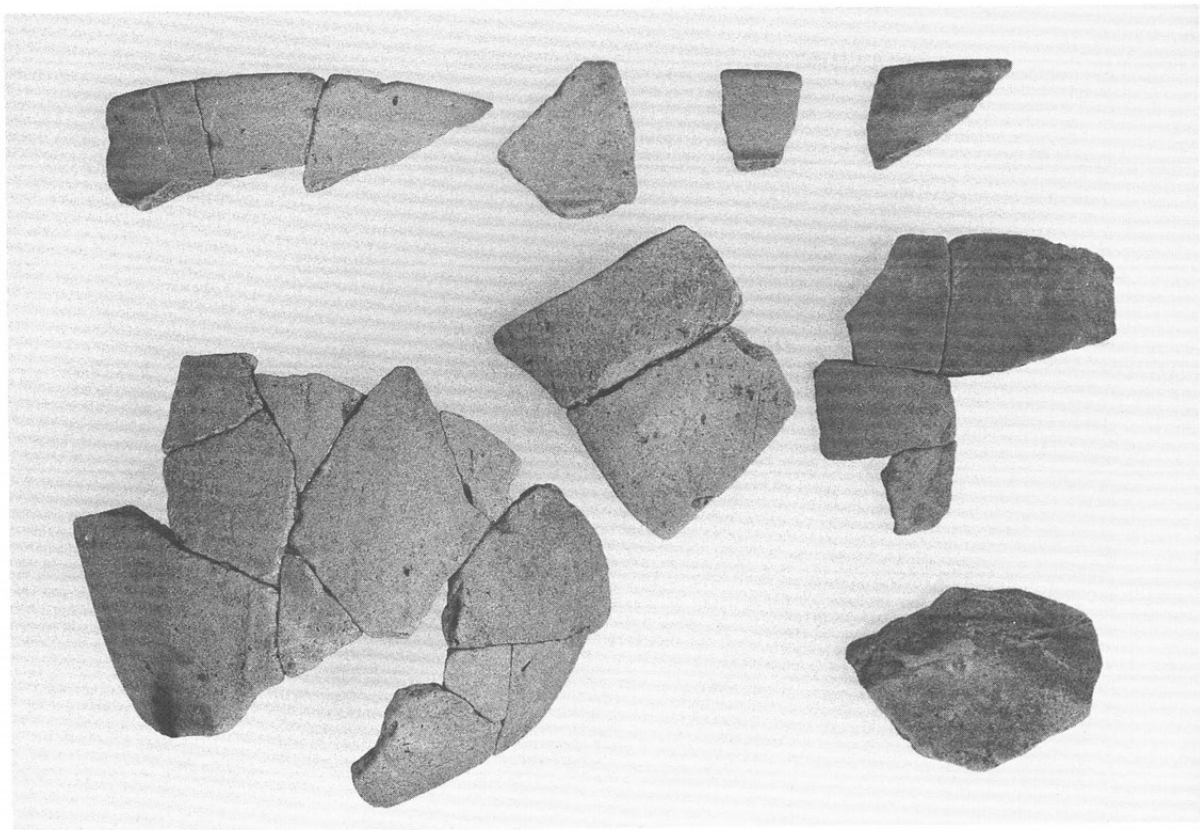
縄文時代の土器

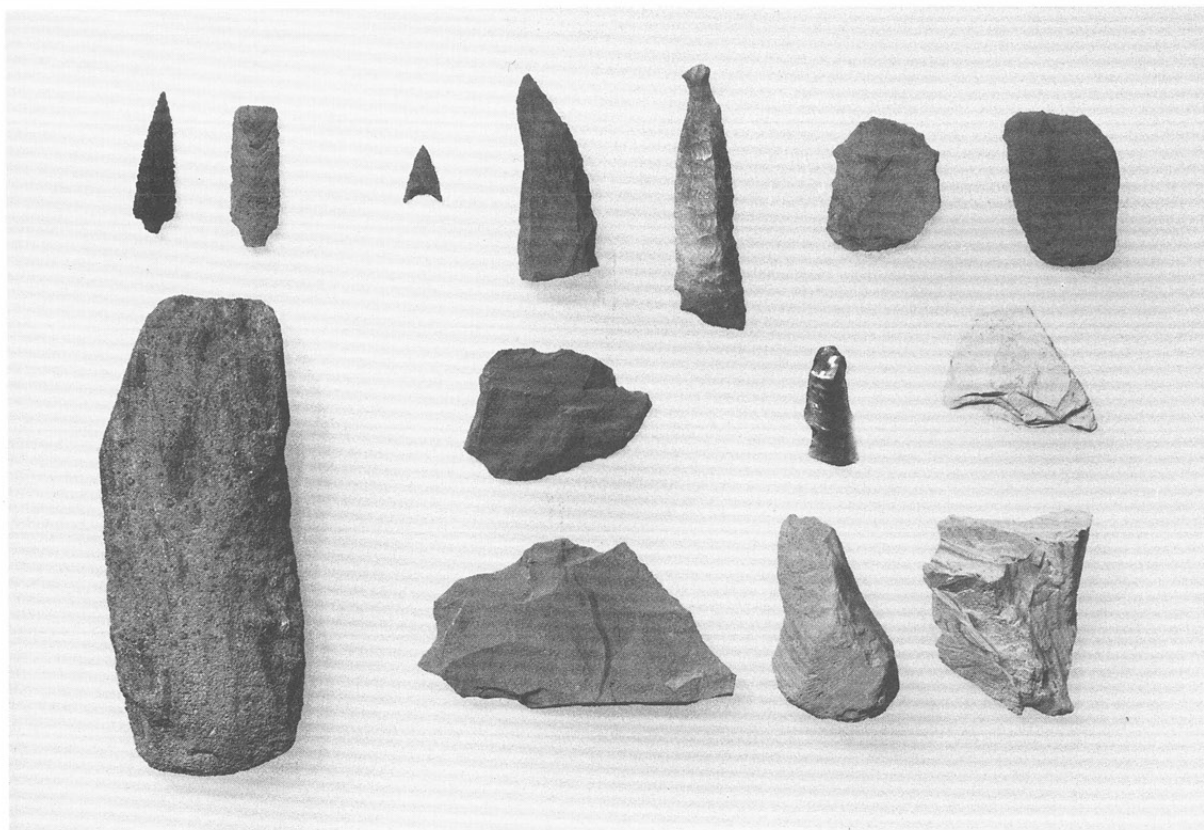




▲ 縄文時代の土器

▼ 平安時代の土器





縄文時代の石器





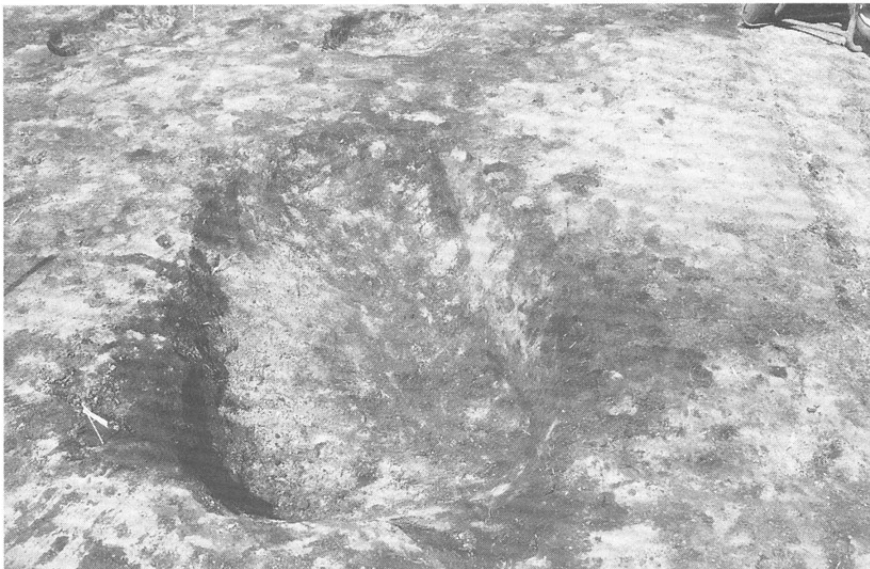
▲ 重機による表土除去作業

▼ 中央部完掘状態（北から 左端がSK3）





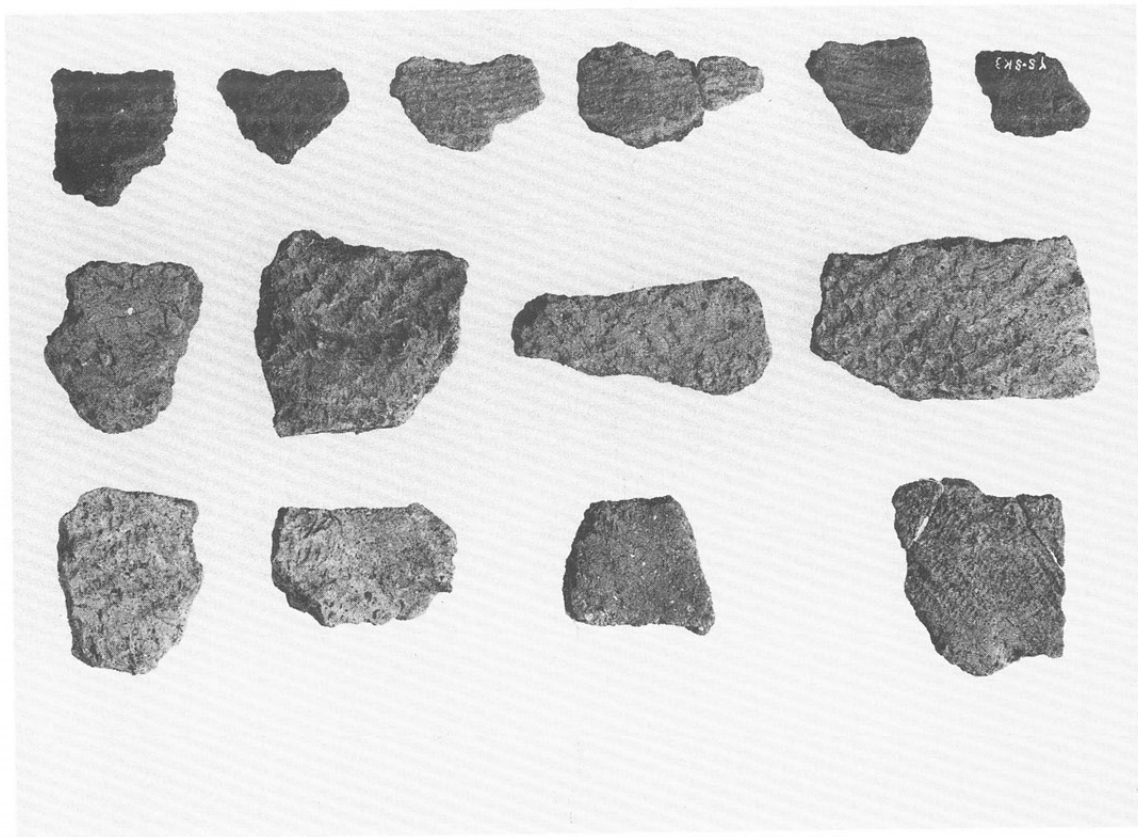
◀ 調査作業風景



◀ ロームマウンド

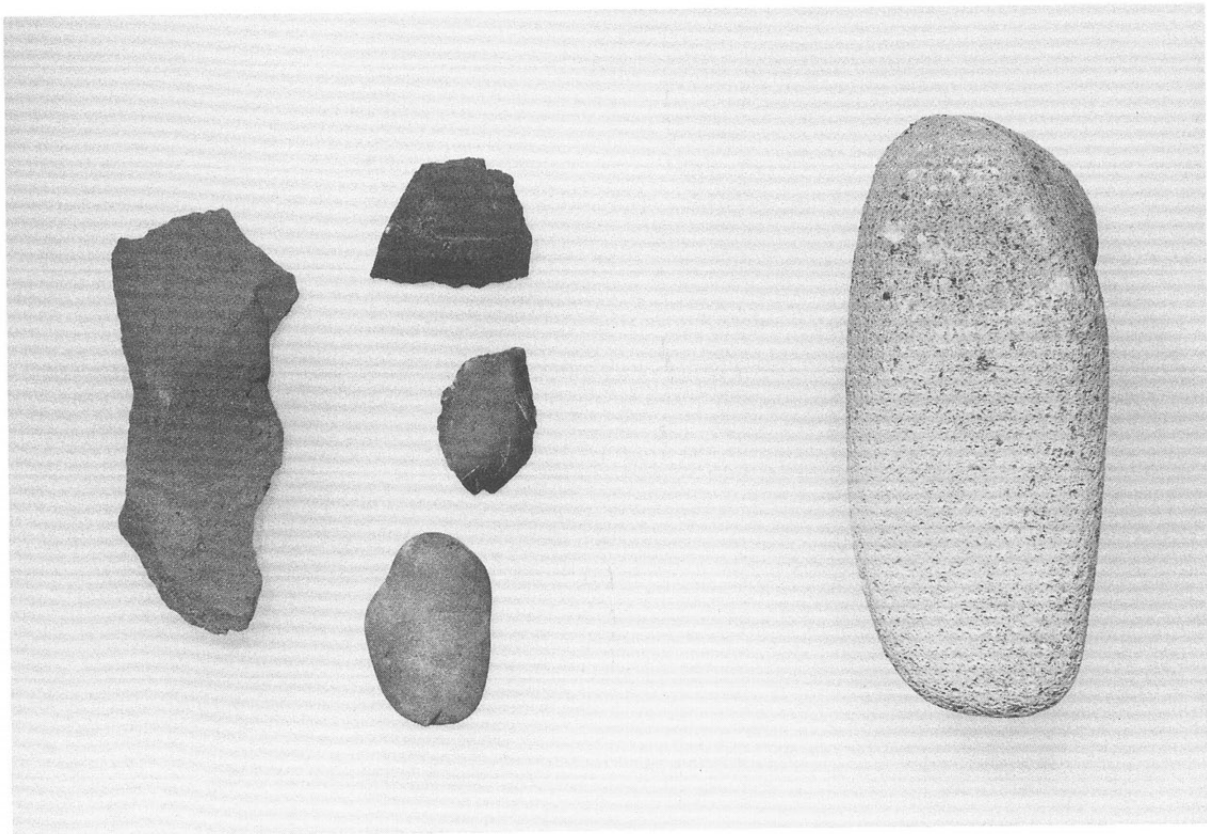


◀ SK 2



▲ 縄文時代の土器

▼ 石 器





▲ 重機による表土除去作業

▼ 調査風景





▲ 遺構上面

▼ 土坑並列状態



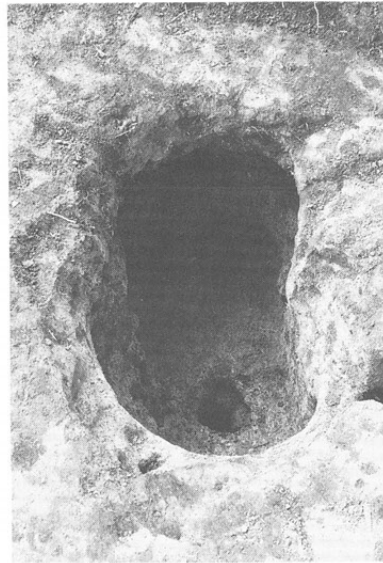


遺物出土状態





SK 1



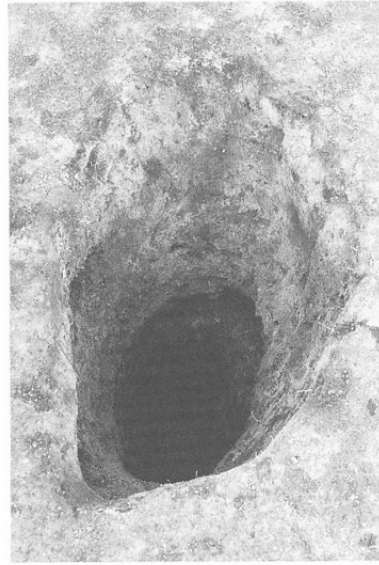
SK 13



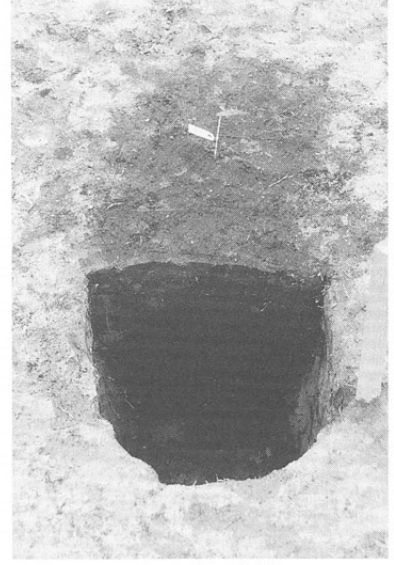
SK 14



SK 17



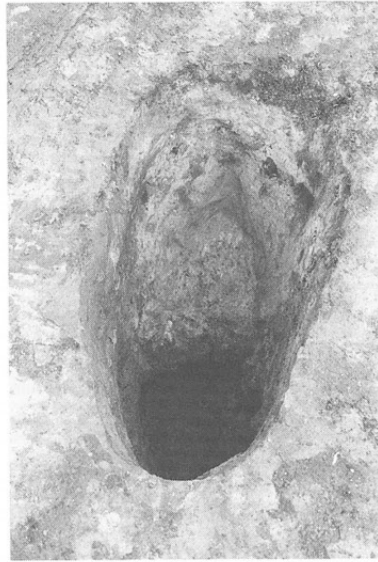
SK 22



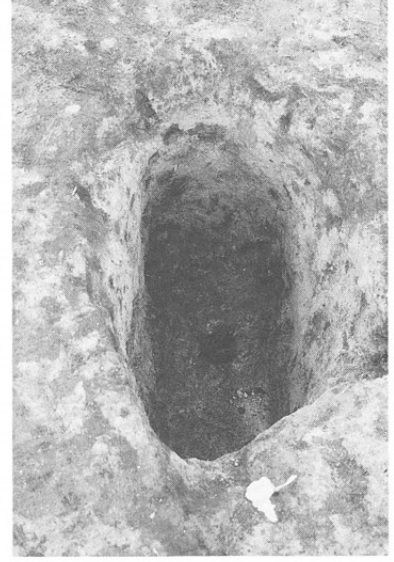
SK 30 半割



SK 30



SK 34



SK 35



SK 2



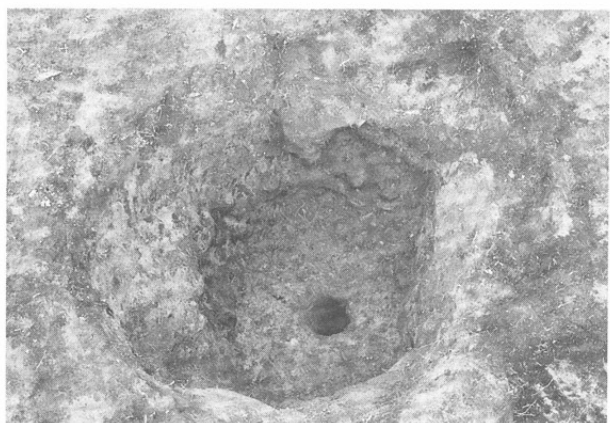
SK 2



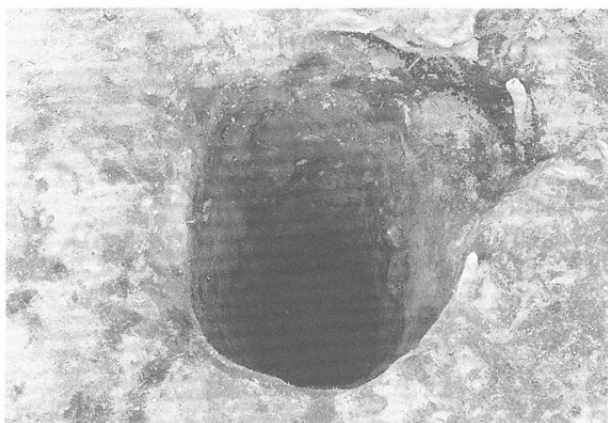
SK 3



SK 4



SK 6



SK 8



SK 10



SK 11



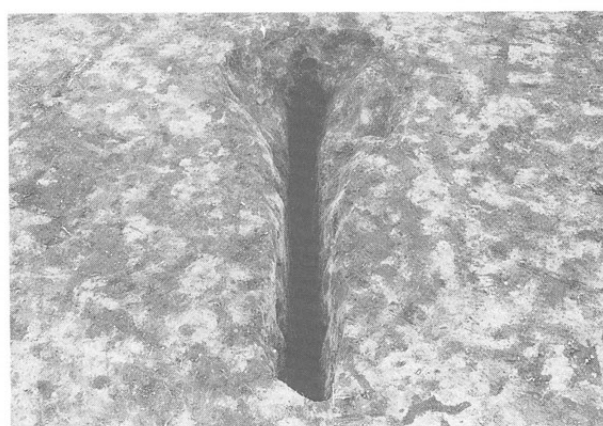
SK 18



SK 20



SK 23



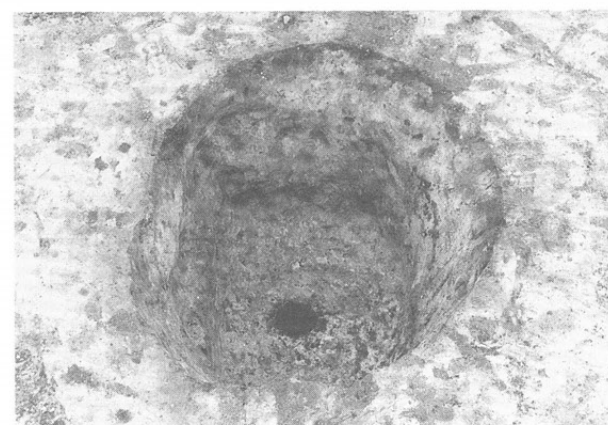
SK 24



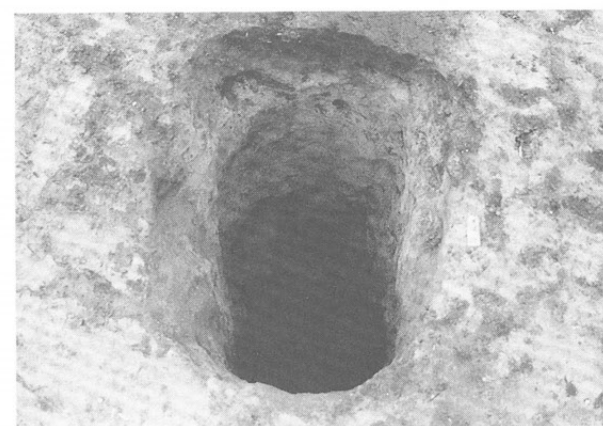
SK 25



SK 26



SK 28



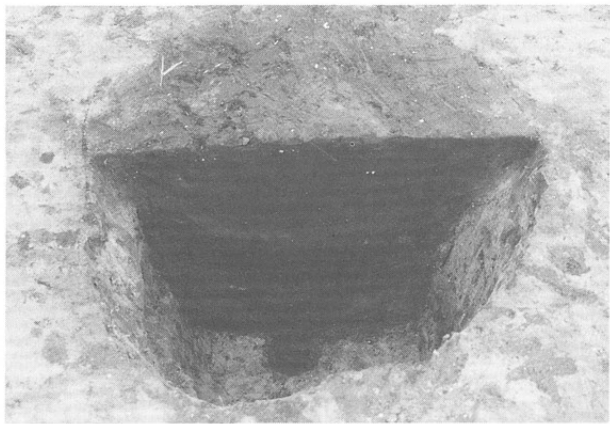
SK 29



SK 31



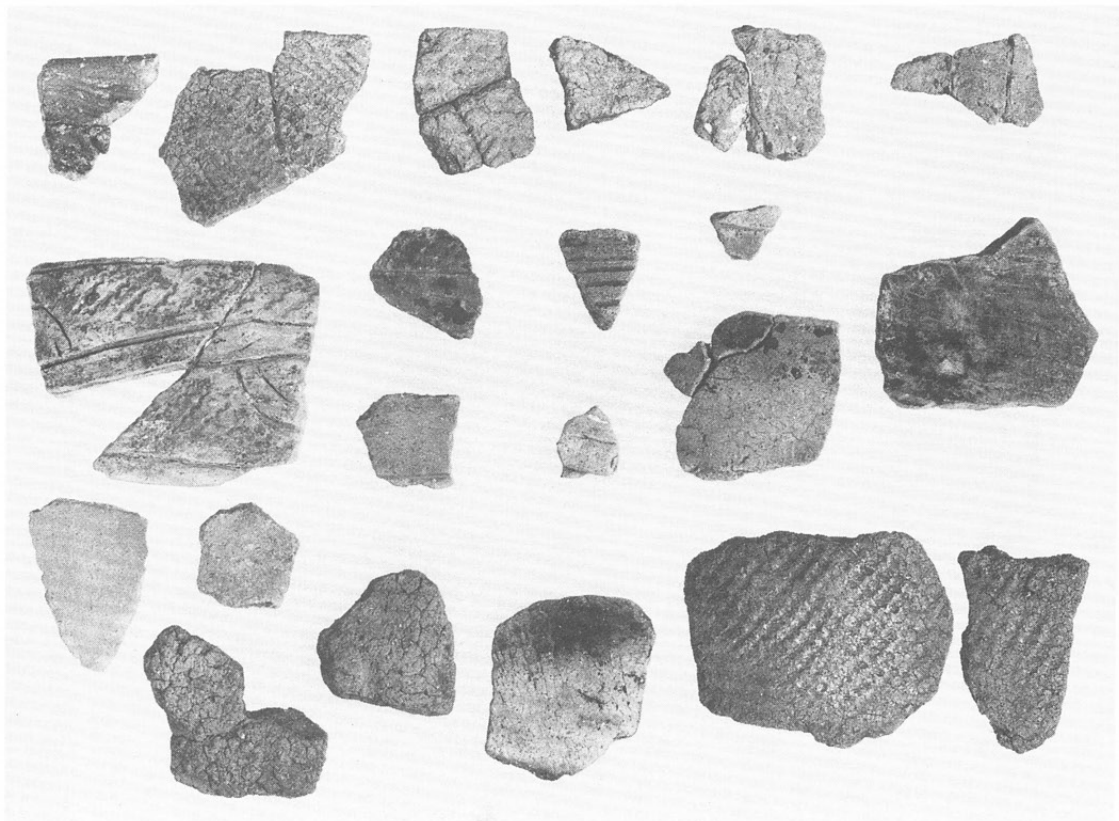
SK 32



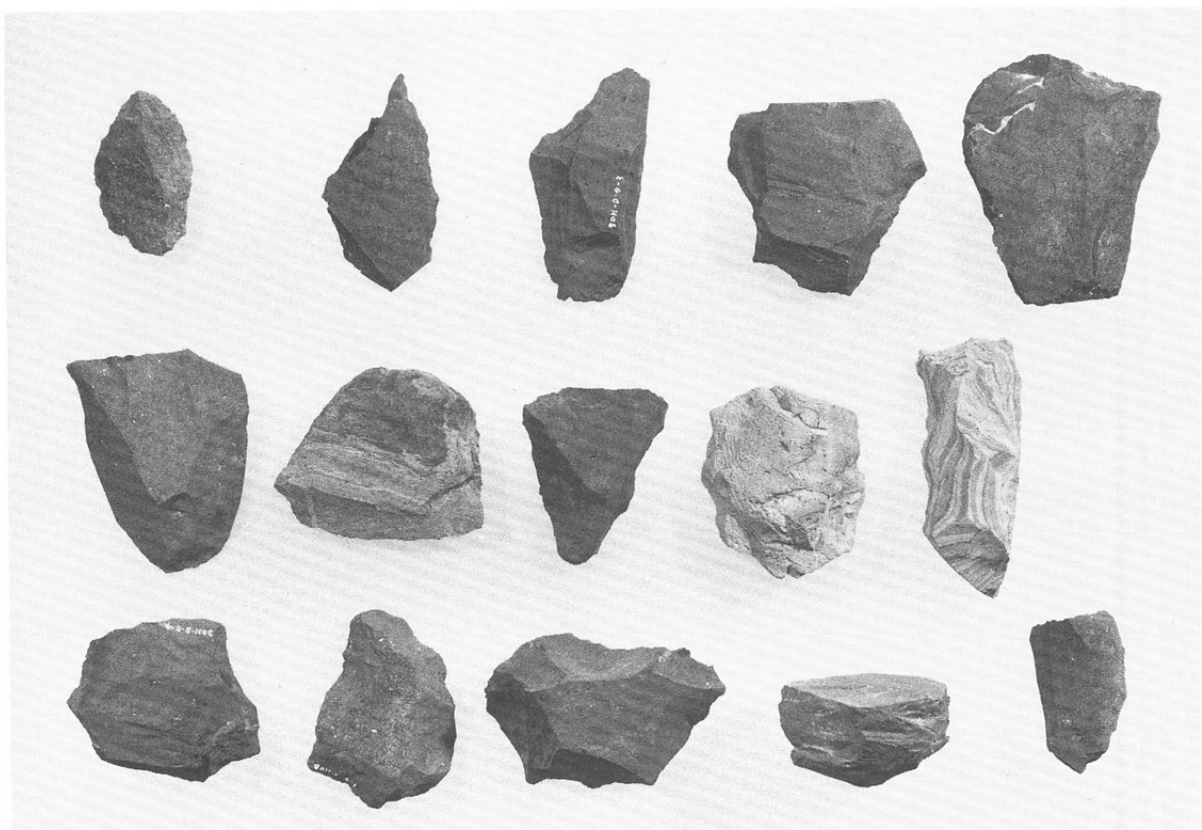
SK 28 半割



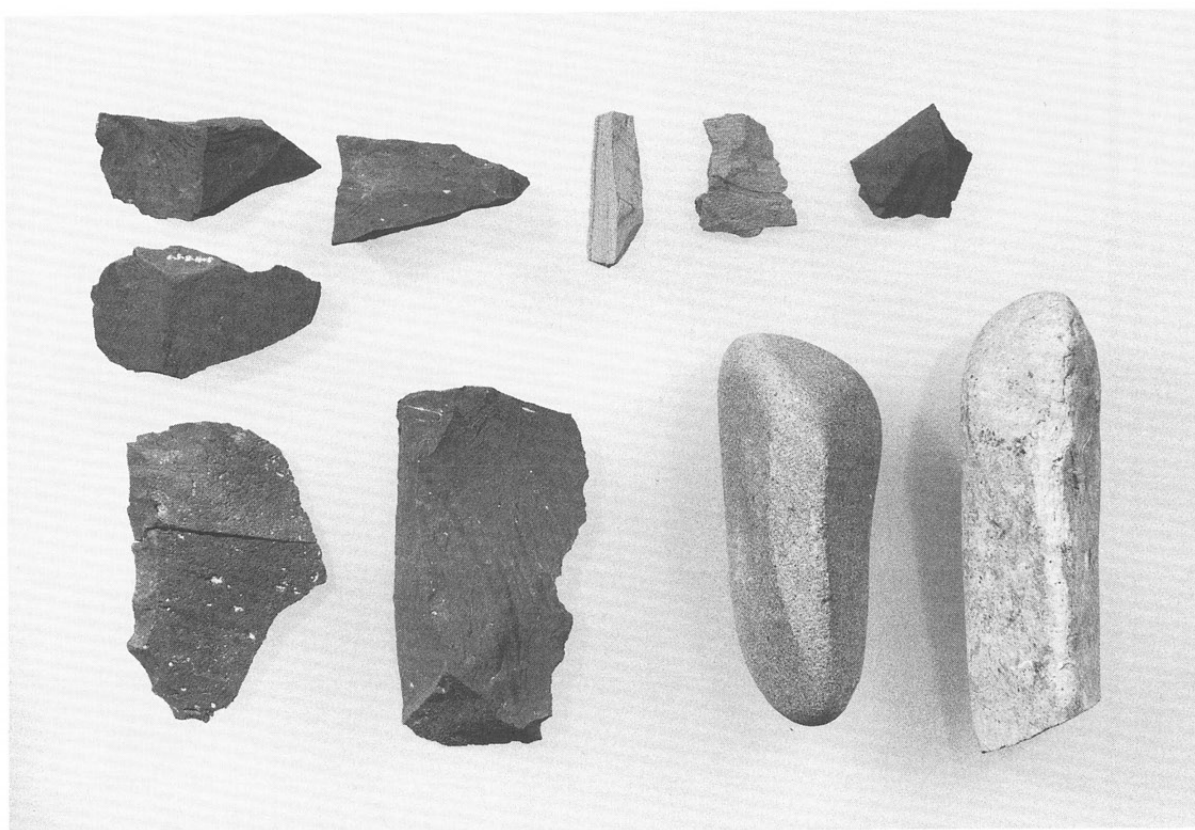
SK 9 半割



縄文時代の土器



縄文時代の石器



飯山市埋蔵文化財調査報告 第32集

国営飯山農地開発関係遺跡発掘調査報告 II

鳴沢頭 I・鳴沢頭 II・カササギ野池・
休場・下境大原 遺跡

平成 4 年 3 月 25 日 発行

発行者 飯山市大字飯山1110-1
飯山市教育委員会

編集者 国営飯山農地開発関係遺跡調査団
(団長 高橋 桂)

印刷所 飯山市大字常盤5733-1
(有)岸田孔版印刷所

1991(平4)11月受領 常盤井

