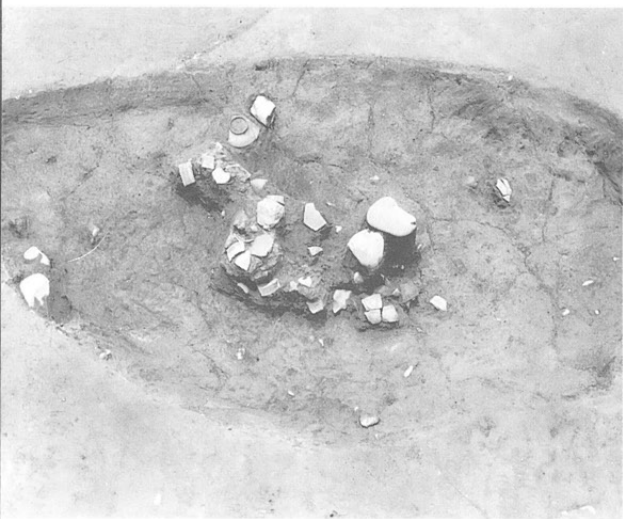




ST 1
(南から)



左SK 4
右SK 6



左SK 28
右SK 30



左SK 743
右SK 743
遺物出土状態

ST6
(北から)



ST7
(西から)



ST8
(南から)





ST14・15
(南から)



水田址
(上空から)



水田址
(北から)

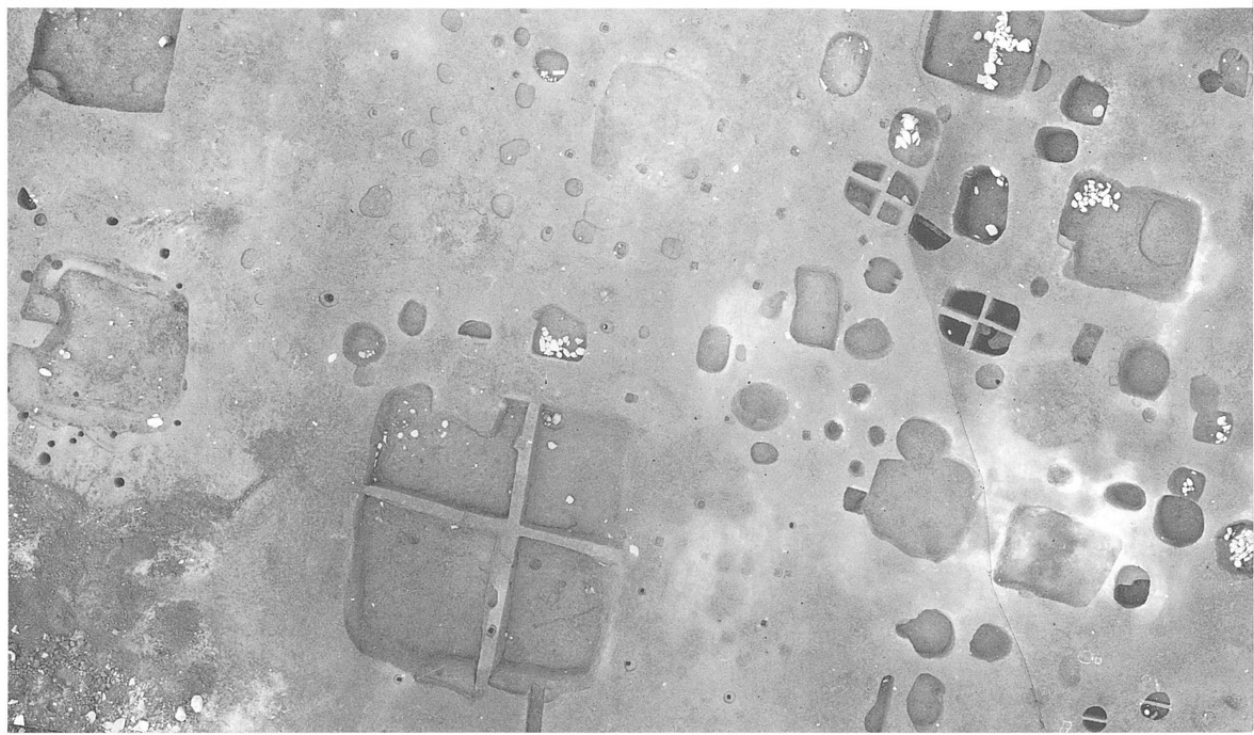
中世土坑群
(北部)



中世土坑群
(北部)



中世土坑群
(中部)





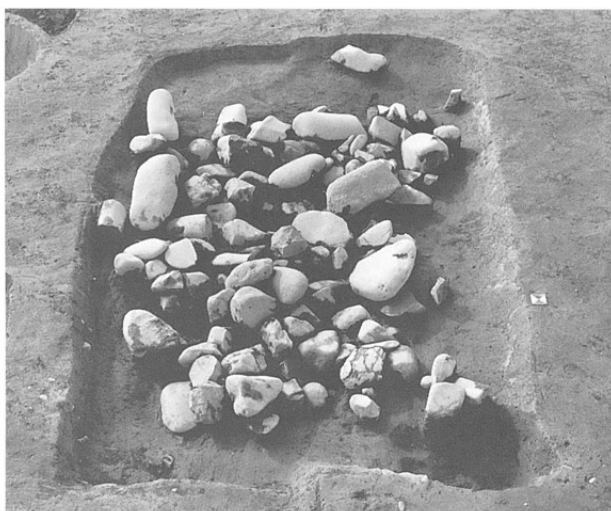
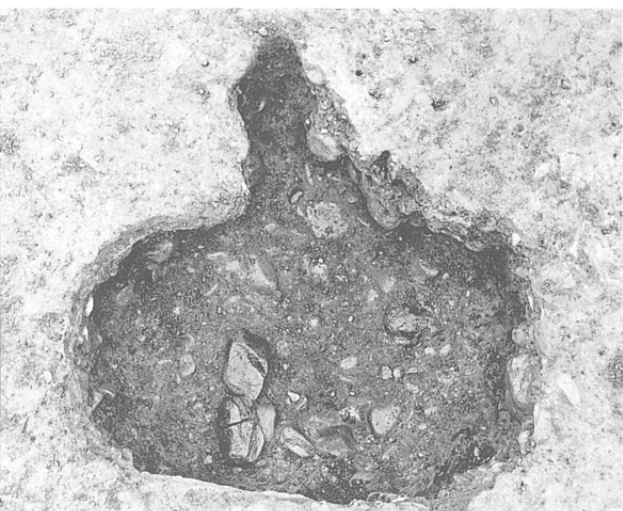
左SK180
右SK180



左SK114
右SK218



左SK224
右SK240

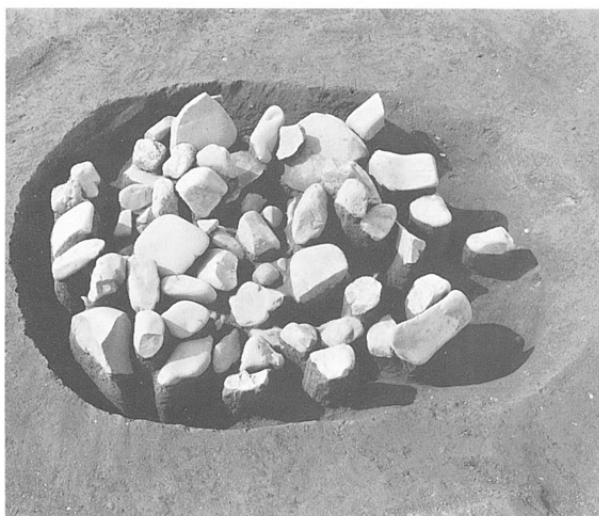


左SK270
右SK303

左SK338
右SK363



左SK388
右SK389

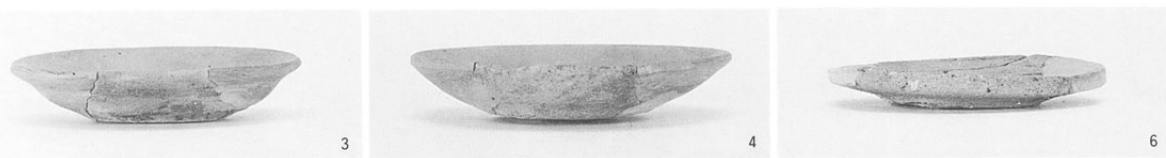


左SK419
右SK460

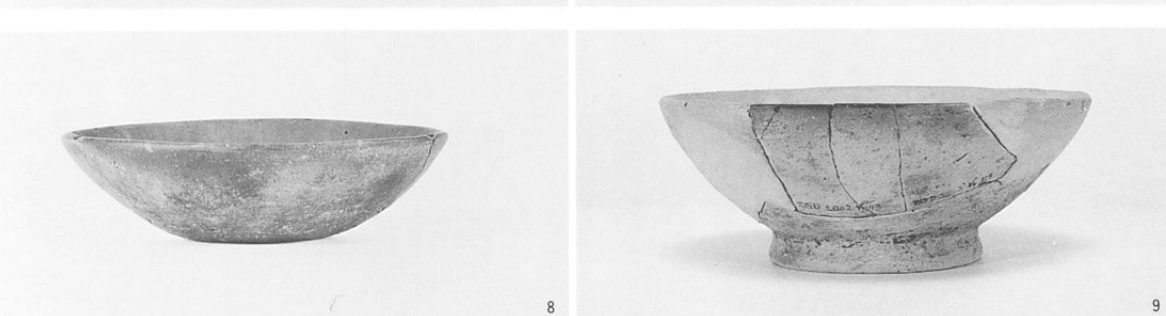
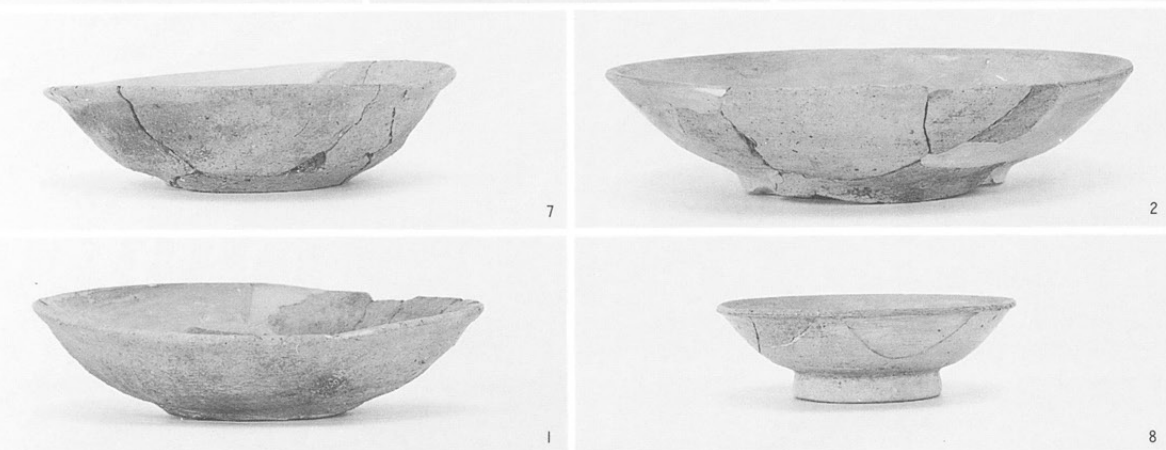


左SK469
右SK487

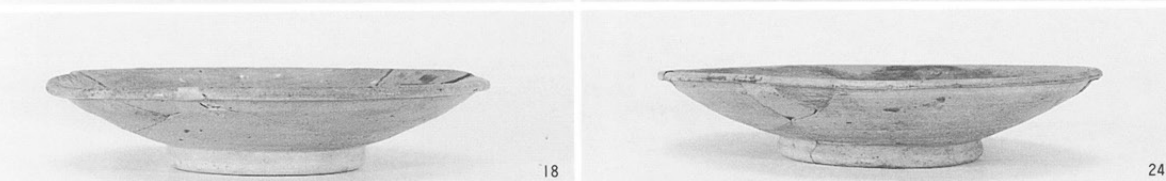
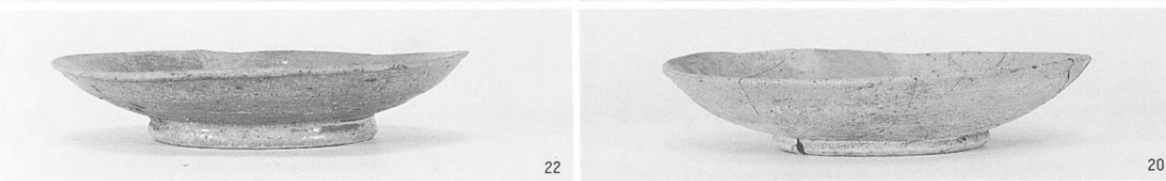
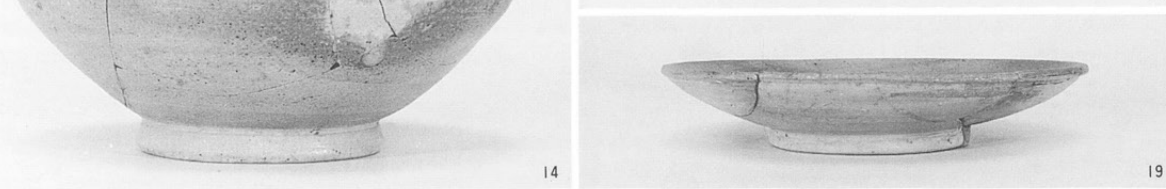
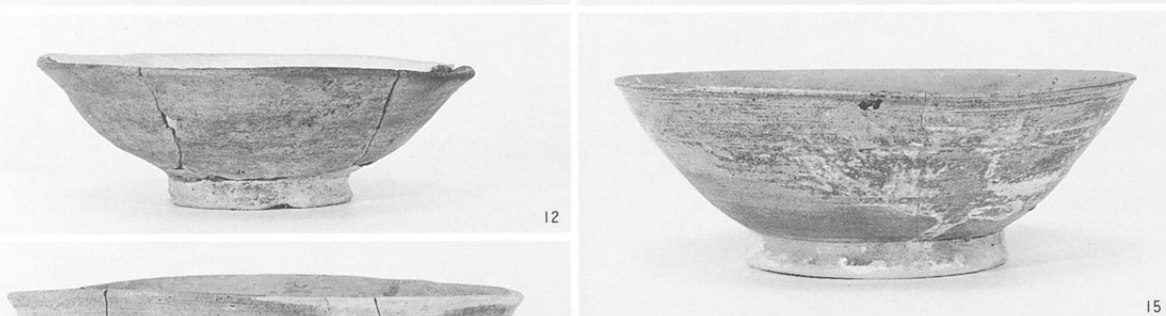
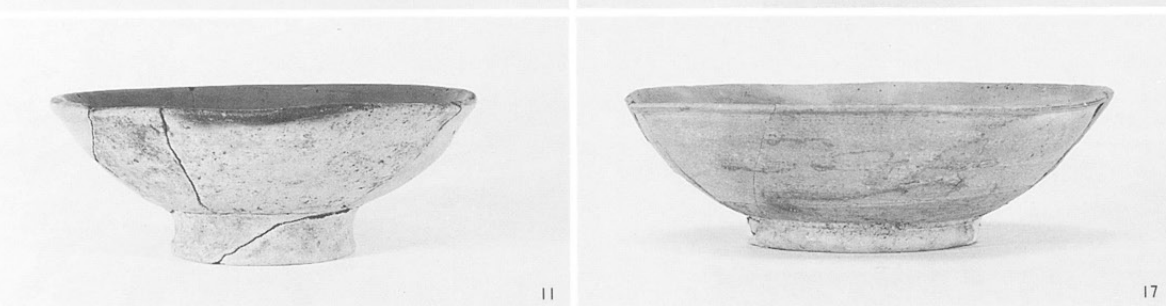




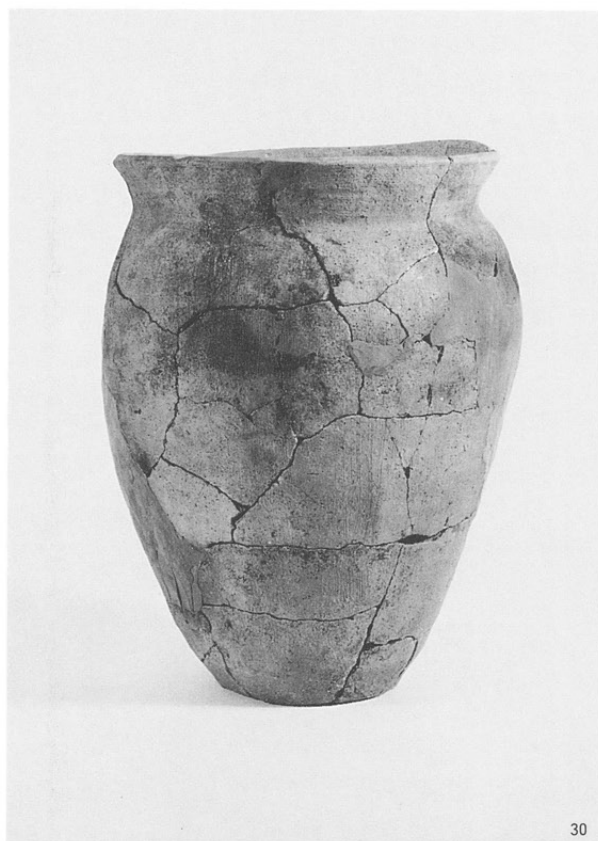
SB1 出土土器



SB2 出土土器



SB2 出土土器



30



29



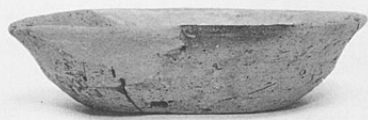
32



33



34



1



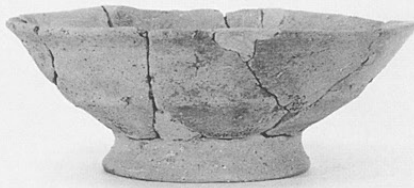
2



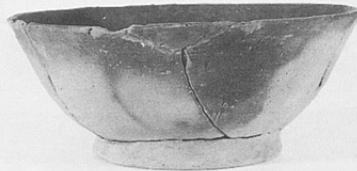
3



4



6



8

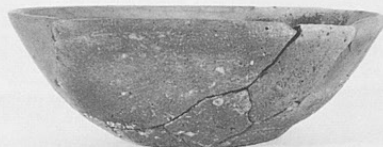


12

SB10出土土器



2



3



4



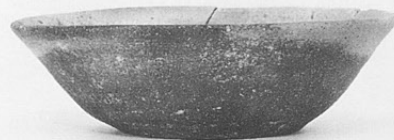
6



8



9



10



11

SB15出土土器

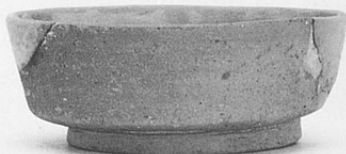


1

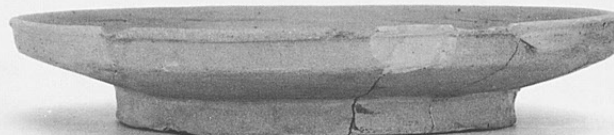


5

SB22出土土器

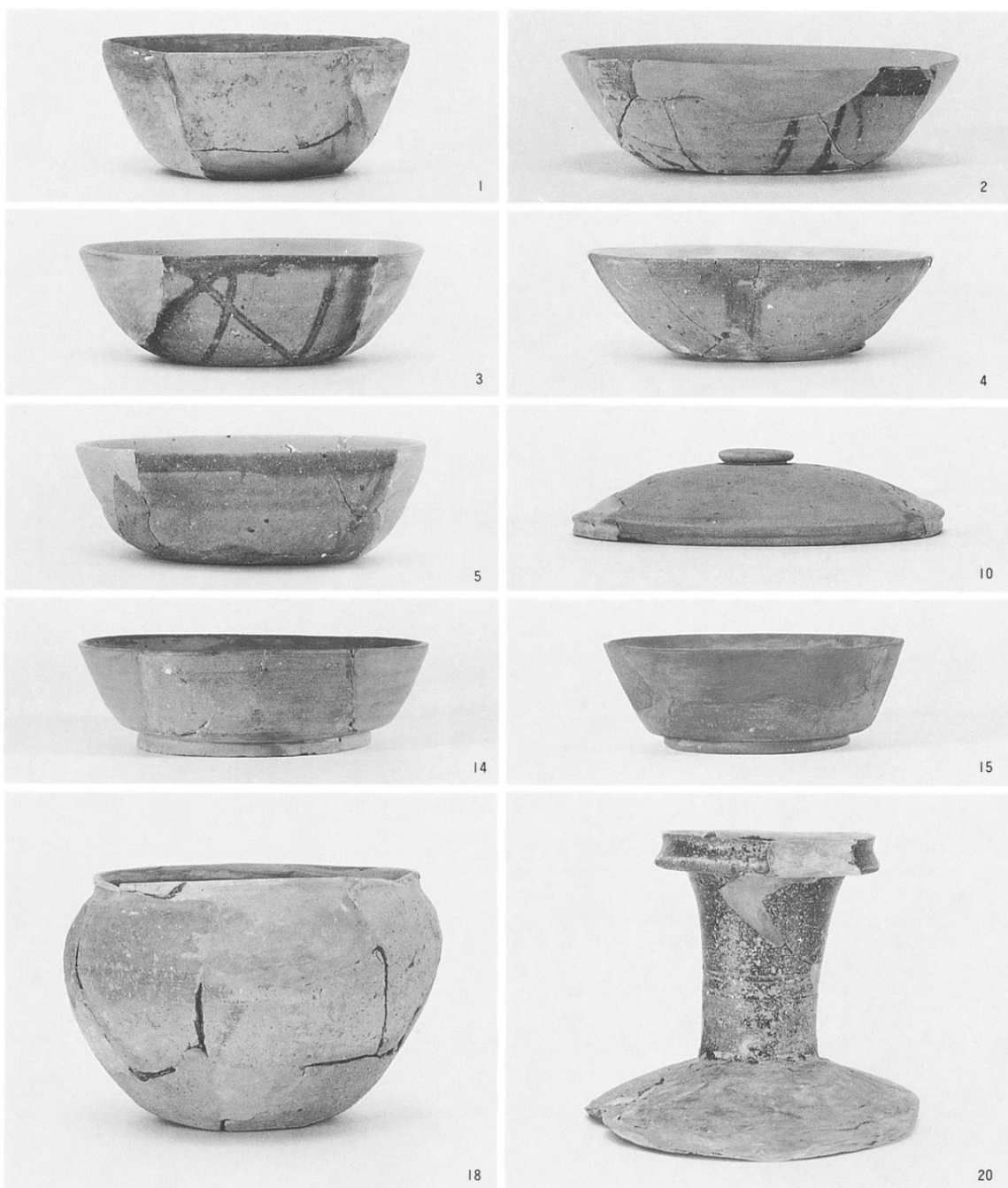


8

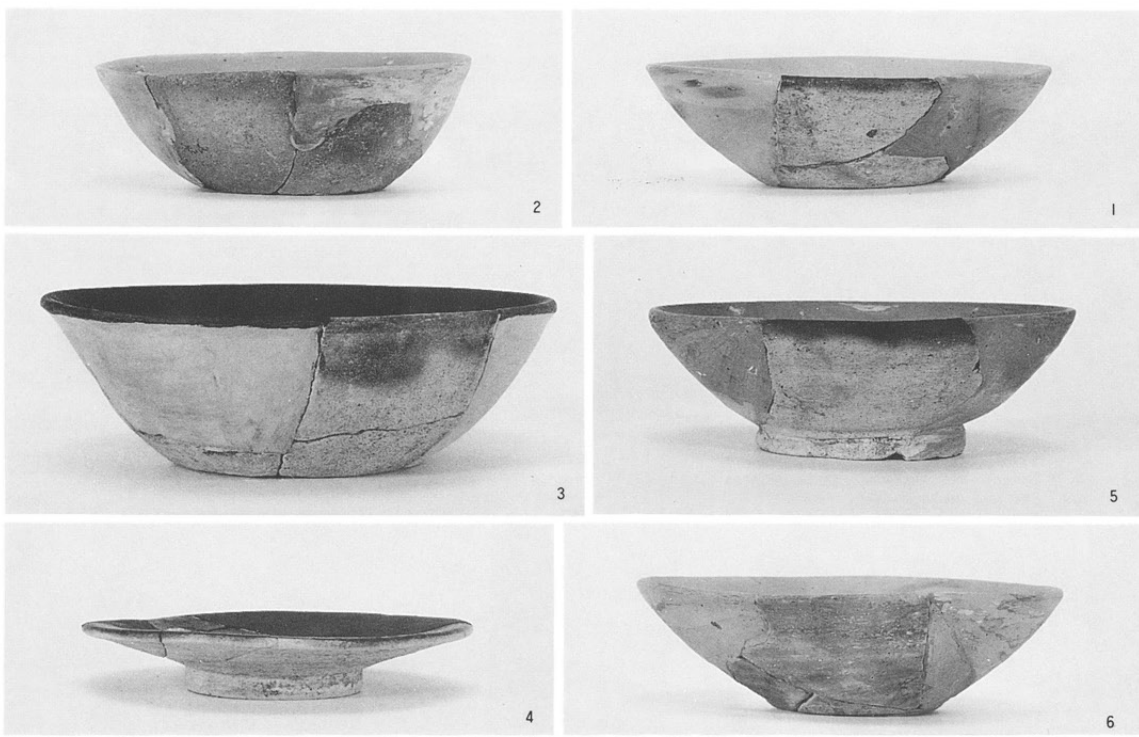


9

SB25出土土器



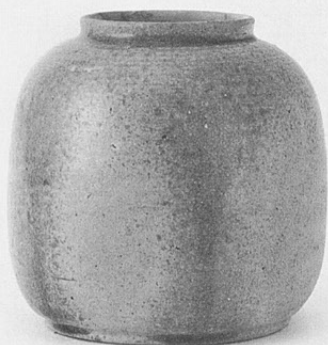
SK28出土土器



SK743出土土器



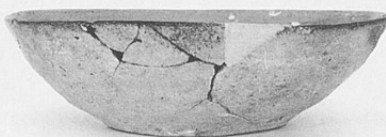
1



2



3



4



5



6



7



11



12



14

遺構外出土土器

緑釉陶器・白磁

9 SB14

2・5 SB15

他は包含層出土



1



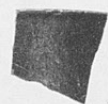
3



4



6



7



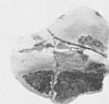
2



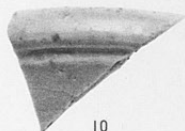
5



8



9



10



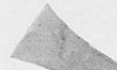
11



12

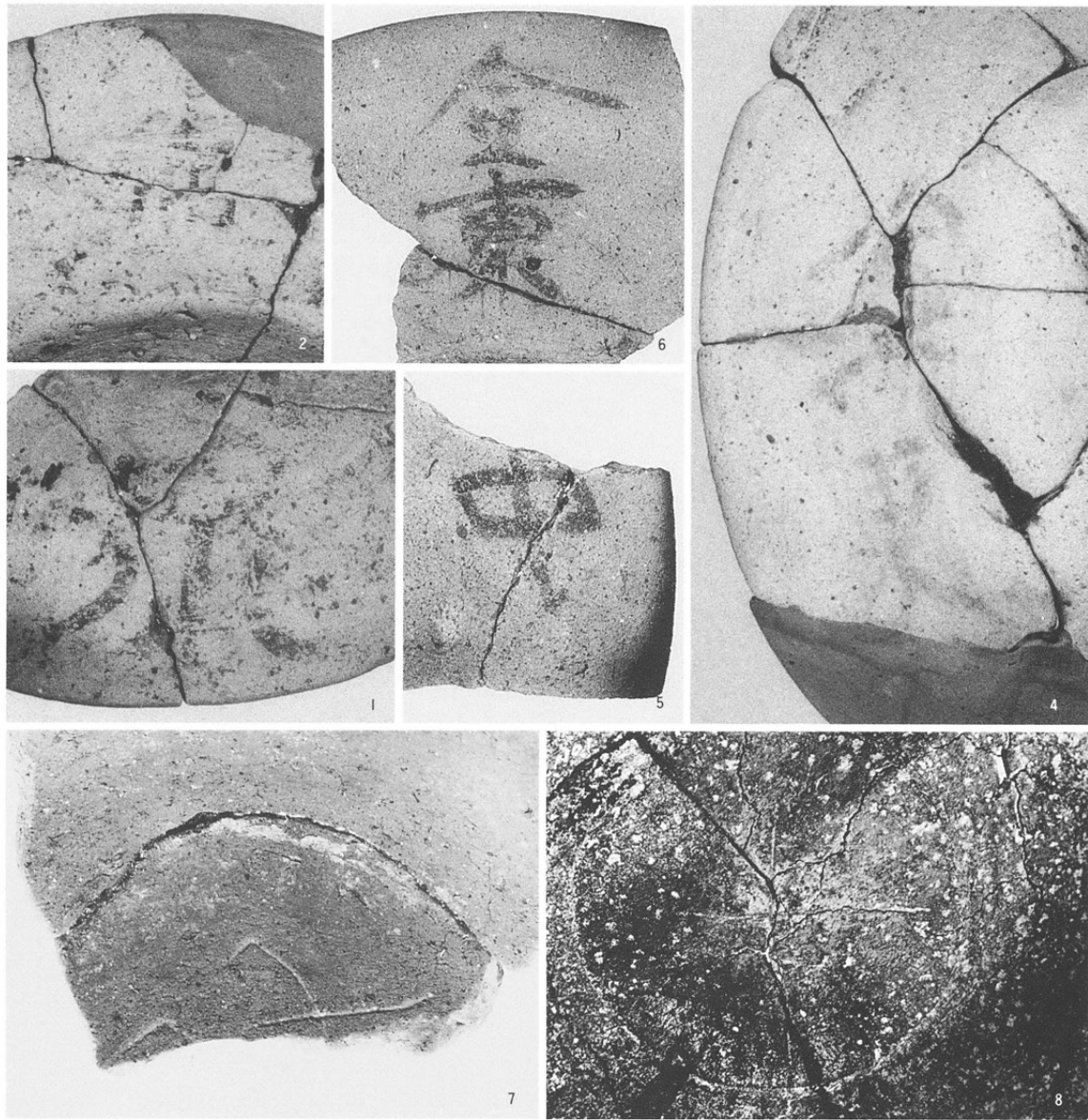


13



14

文字関係資料

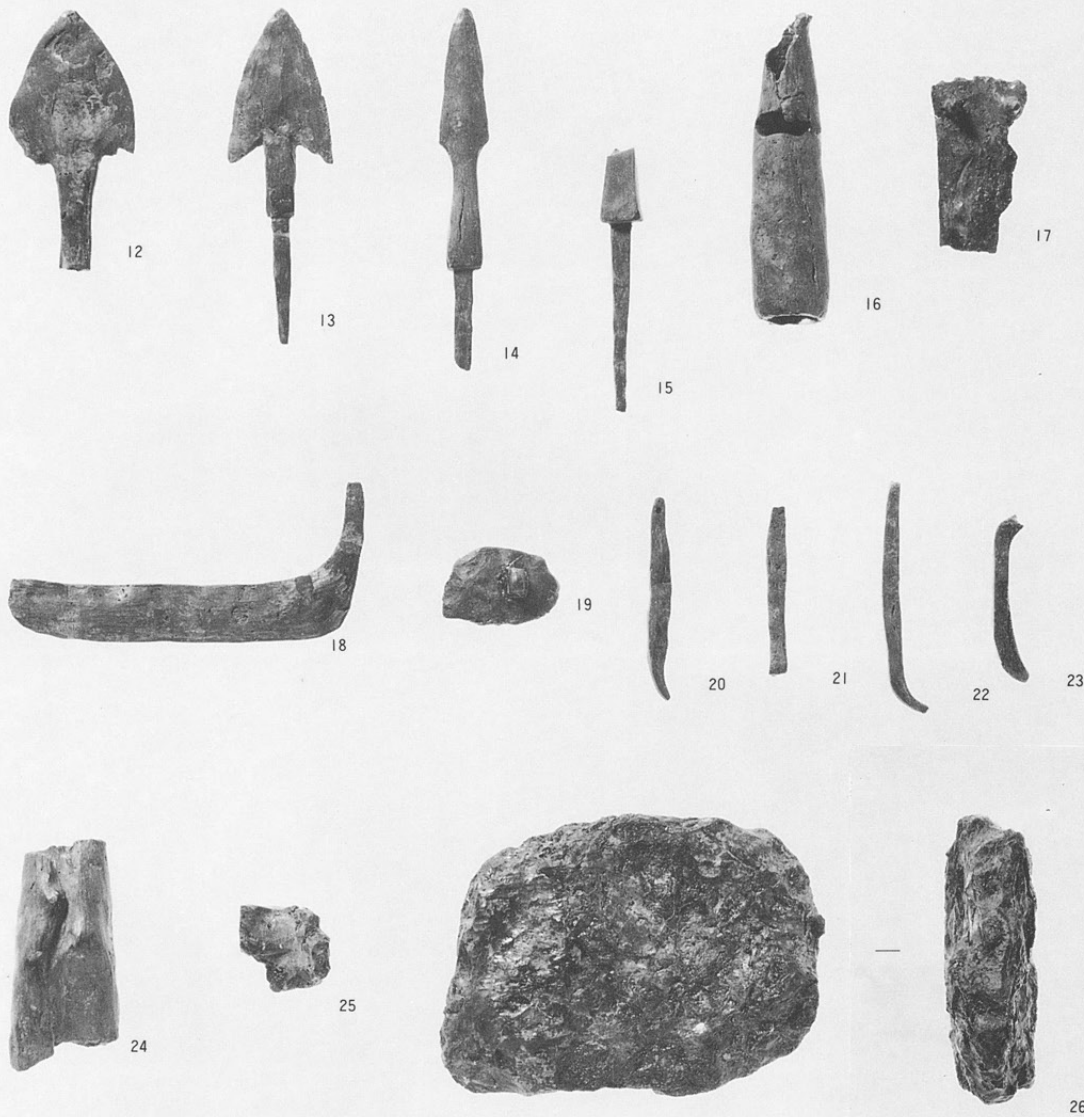


古代金属製品
1~11鉄製品



古代 金属製品

12~26 鉄製品



左 古代鉄滓

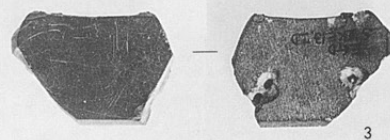
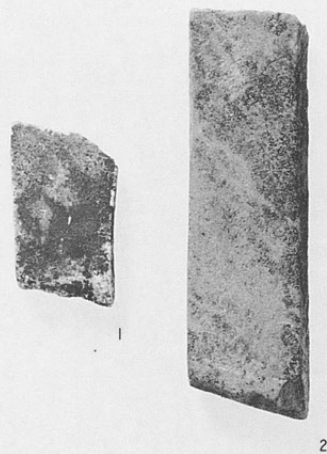
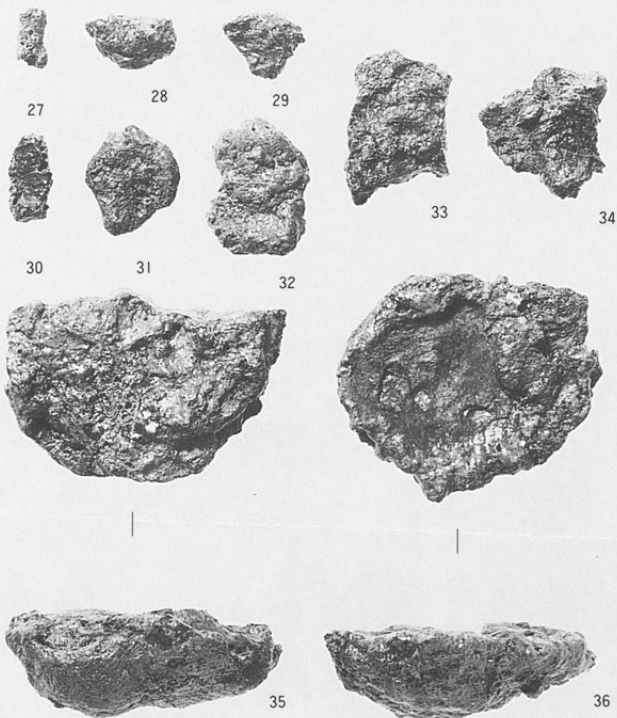
27~36

(1:3)

右 古代石製品

1・2 (1:2)

3 (1:1.5)



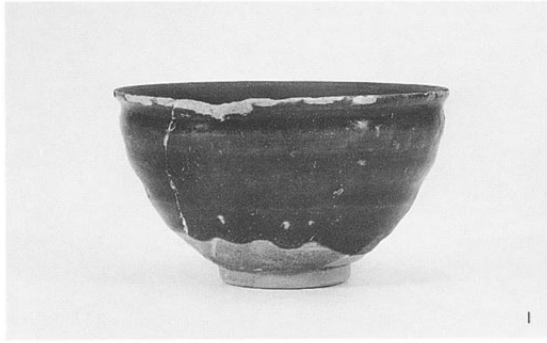
中世土器・陶磁器

4 : 遺構外

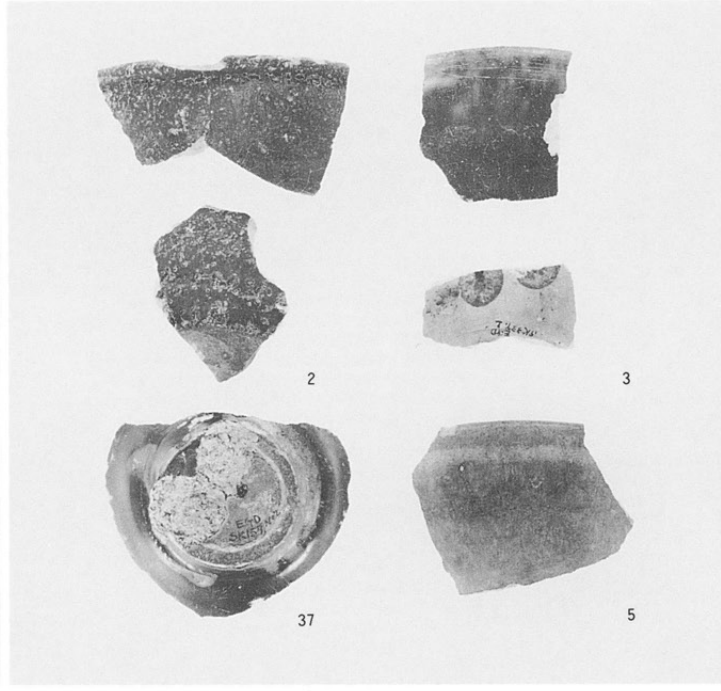


4

1 : SK180
2 : SK63・180
3 : SK339
37 : SK157
5 : テストピット16X



1



2

3

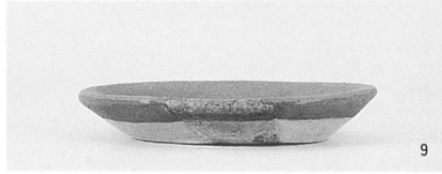
37

5

8 : SK194
9 : SK205
10 : SK207



8

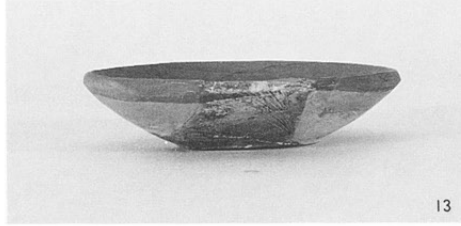


9



10

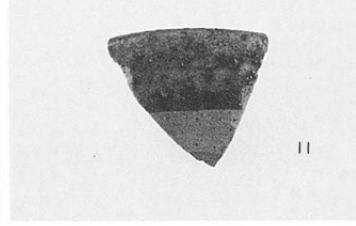
13 : 遺構外
14 : 遺構外
11 : I・PI-13区



13



14



11

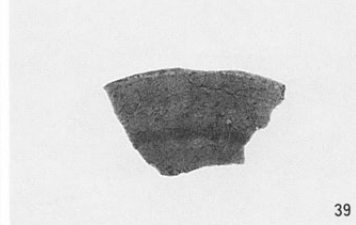
16 : SK157
17 : SK117
39 : I・PG-15区



16

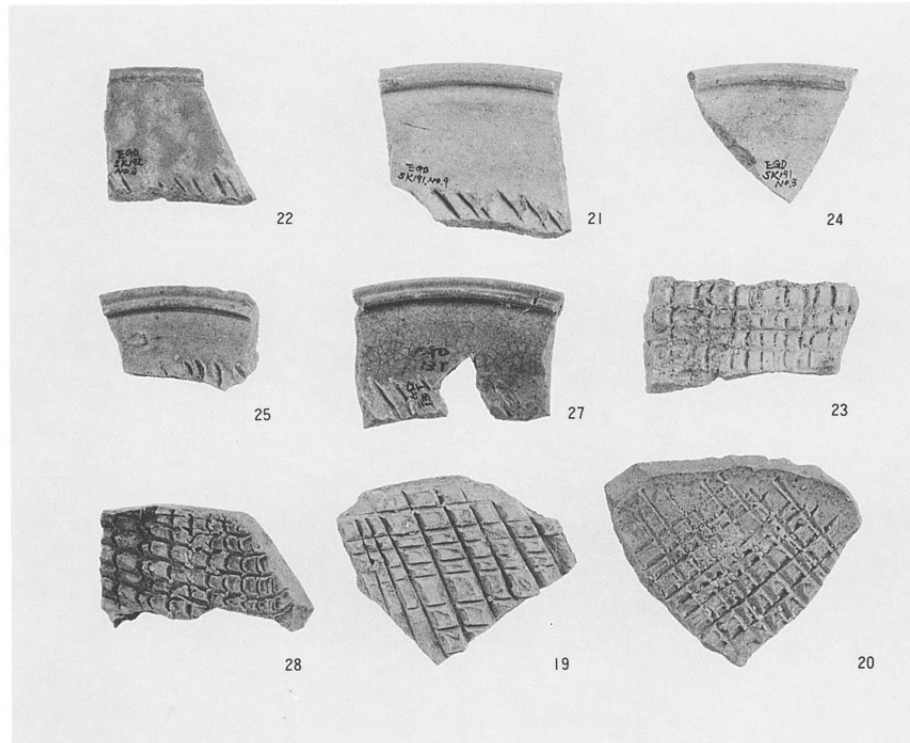


17



39

22 : SK191
21 : SK191
24 : SK192
25 : I・PG-13区
27 : 13トレンチ
23 : SK191
28 : 遺構外
19 : SK63
20 : SK180
40 : SK197
32 : SK180



22

21

24

25

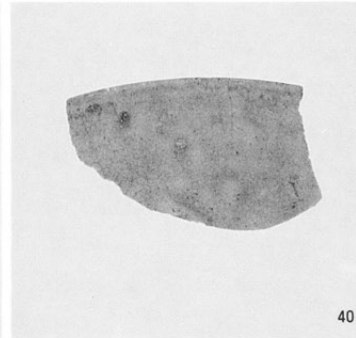
27

23

28

19

20



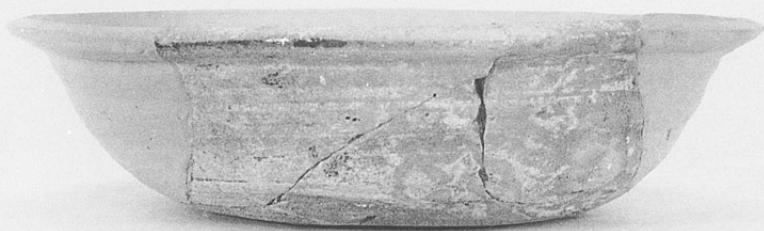
40



32

中世土器・陶磁器

31 : SK390



31

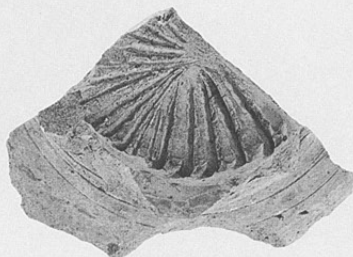
34 : テストピット7 X

18 : SK32

6 : 遺構外



34



18



6

50 : SK194

46 : 遺構外

51 : SK201・389



50



51



46

47 : 遺構外

45 : SK410

95 : 12トレンチ

96 : 03トレンチ

97 : 遺構外

98 : 遺構外

41 : SK62

48 : 遺構外

44 : SK361

99 : 05トレンチ

49 : テストピット15・16Z

43 : SK180

42 : SK180

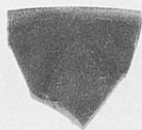
100 : 遺構外

101 : 13トレンチ

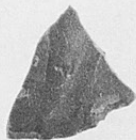
102 : 19トレンチ



47



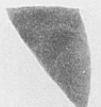
45



95



96



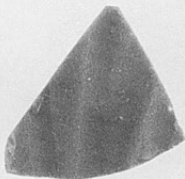
97



98



41



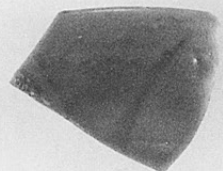
48



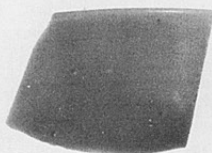
44



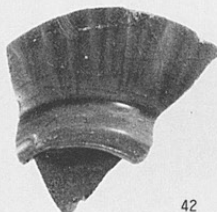
99



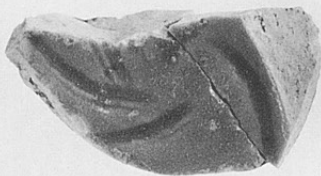
49



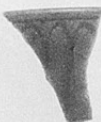
43



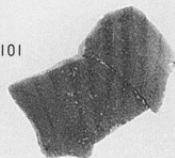
42



100



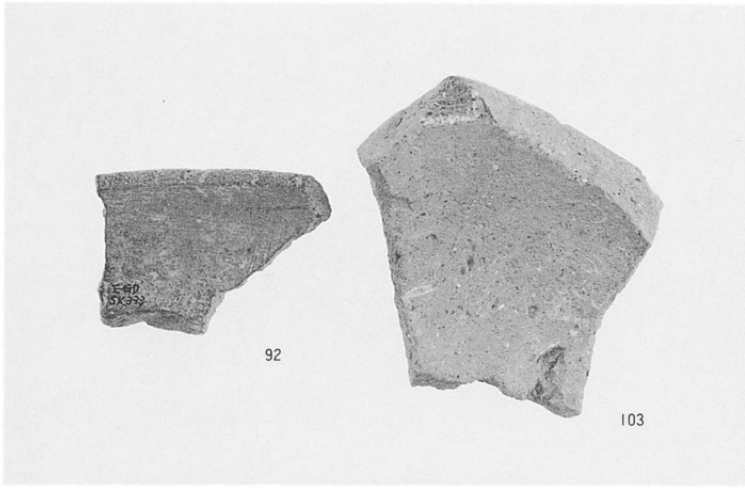
101



102

中世土器・陶磁器

- 92 : SK333
- 103 : 17トレンチ
- 91 : I・P区



- 94 : SK487
- 90 : SK221



- 94 : SK487



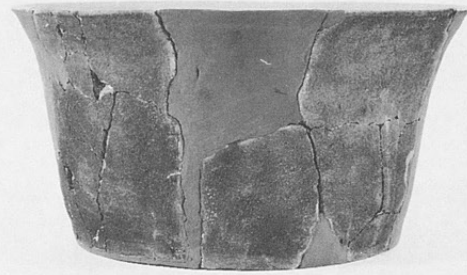
中世土器・陶磁器

62 : SK114

82 : SK274



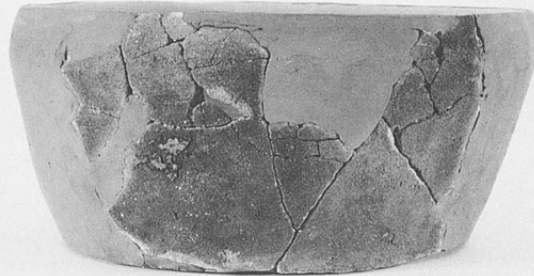
62



82



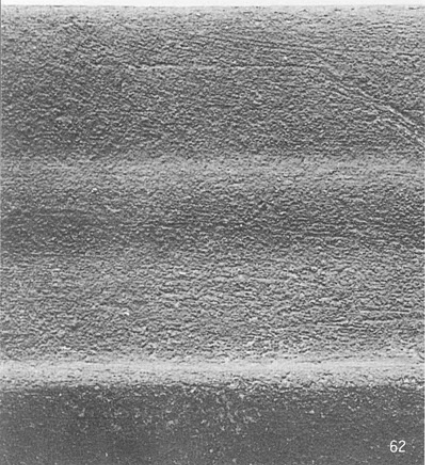
53



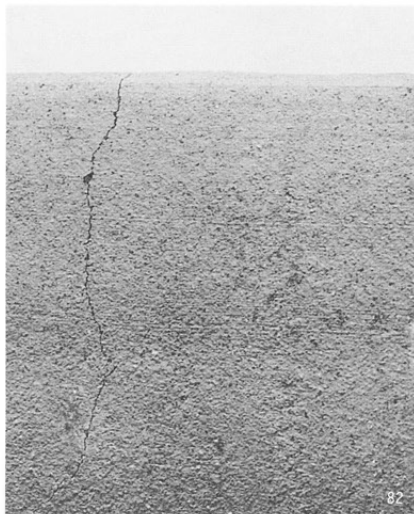
85

53 : ST11

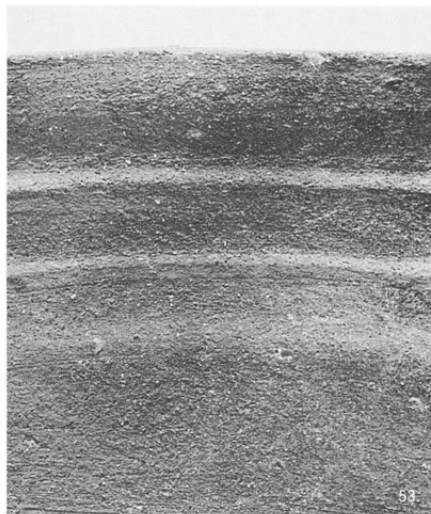
85 : 遺構外



62



82

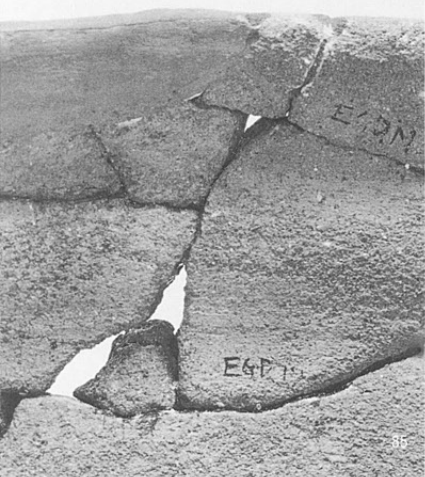


53

62 : SK114

82 : SK274

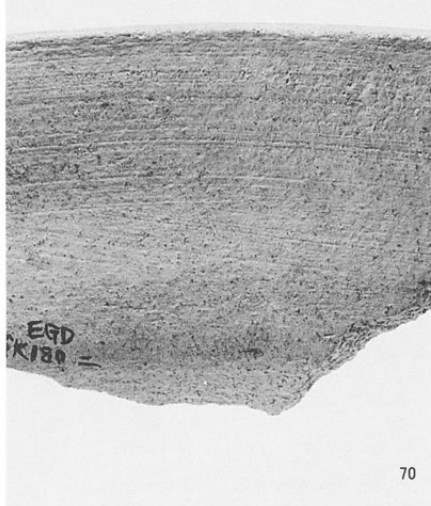
53 : ST11



85



84



70

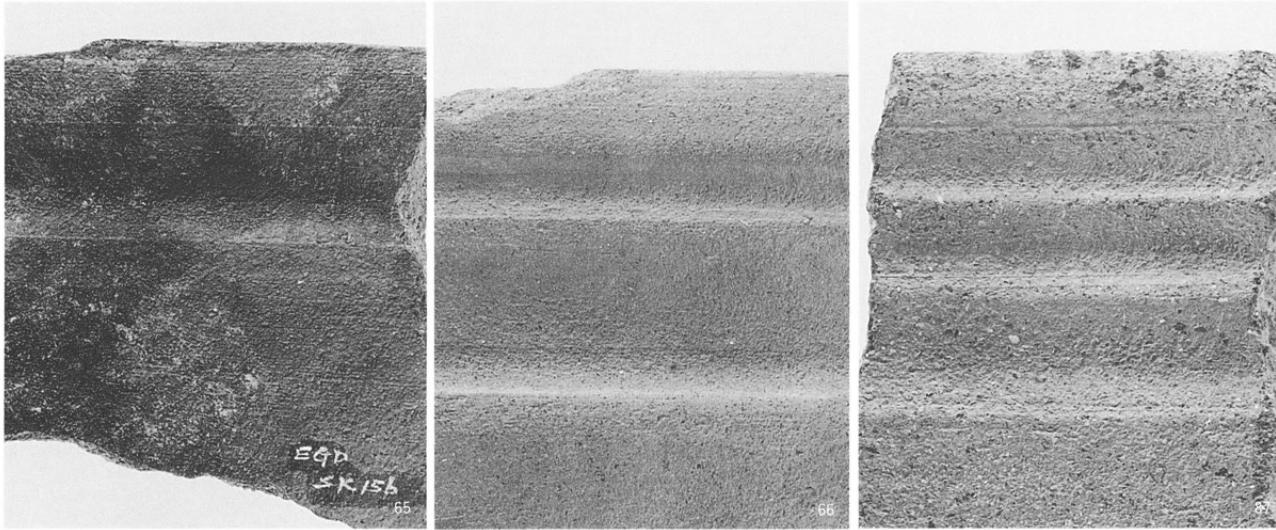
85 : 遺構外

84 : 遺構外

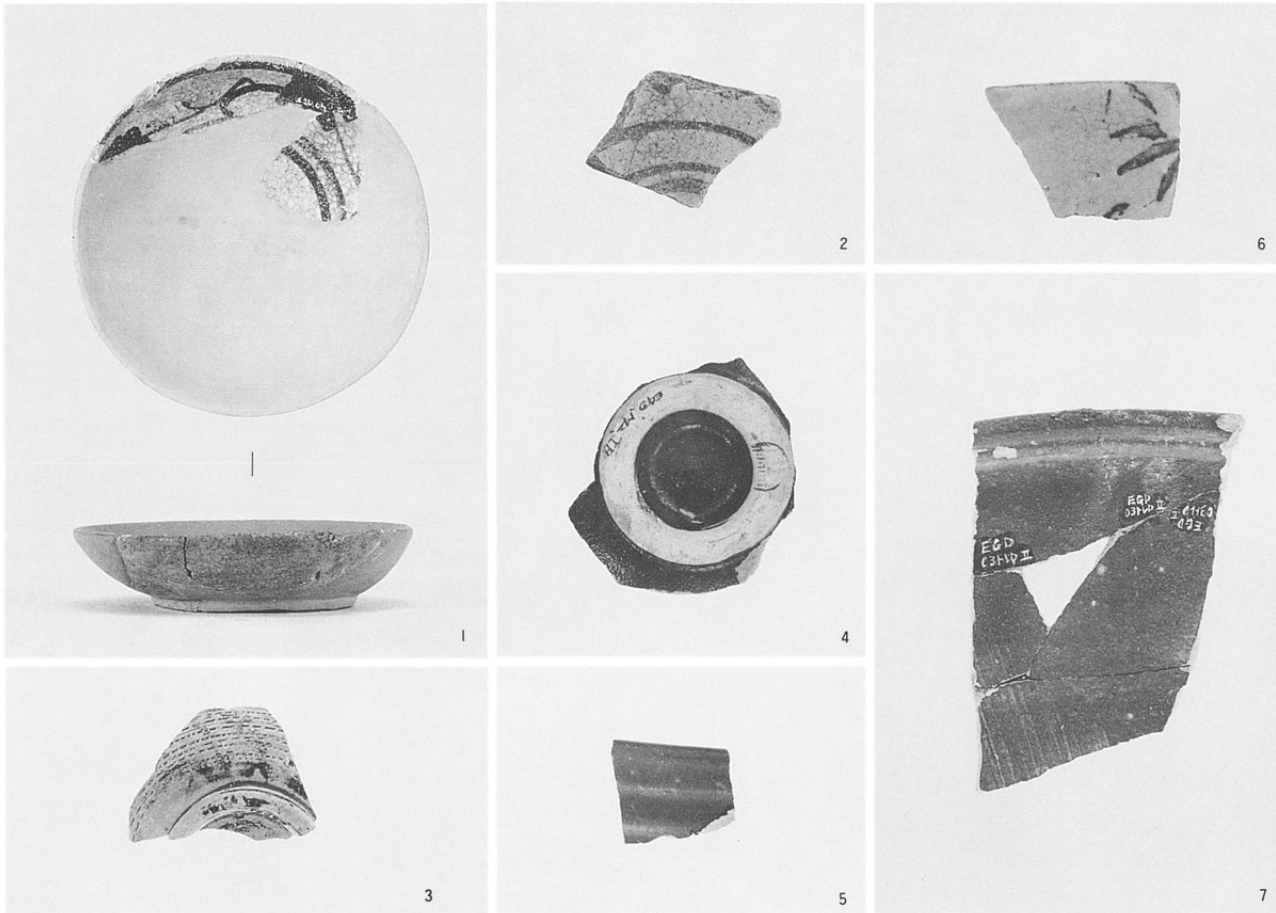
70 : SK180

中近世土器・陶磁器

- 65 : SK156
- 66 : SK156・157
- 87 : 遺構外



- 1 : 06トレンチ
- 2 : 11トレンチ
- 6 : 01トレンチ
- 4 : 遺構外



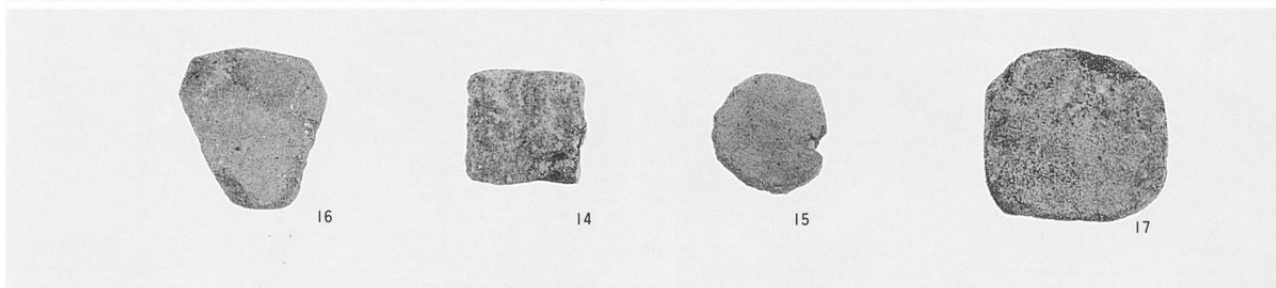
- 3 : 遺構外
- 5 : 遺構外
- 7 : 03トレンチ

中世土製品

SK263出土土錘



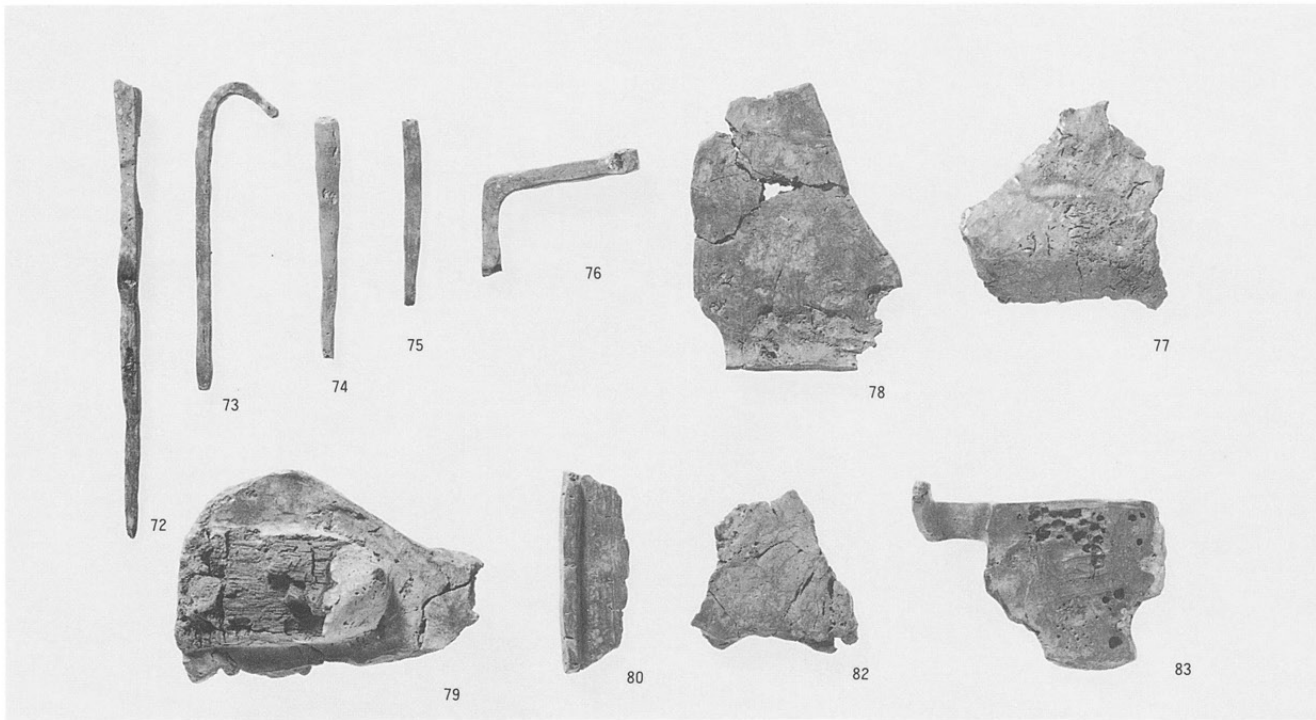
- 16 : SK180
- 14 : SK180
- 15 : 遺構外
- 17 : 遺構外





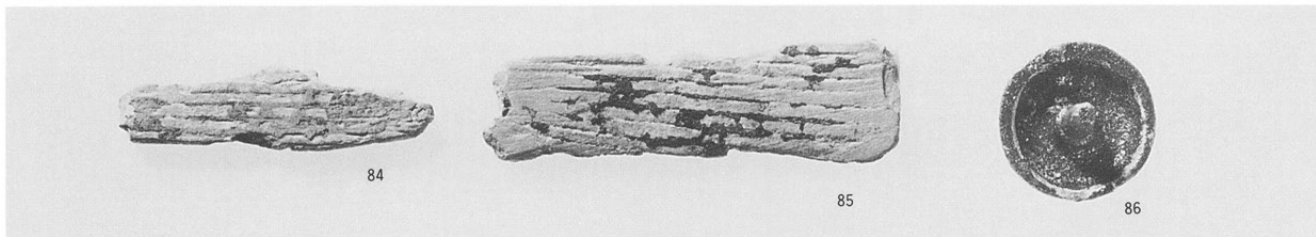
中世金属製品

72~83 鉄製品



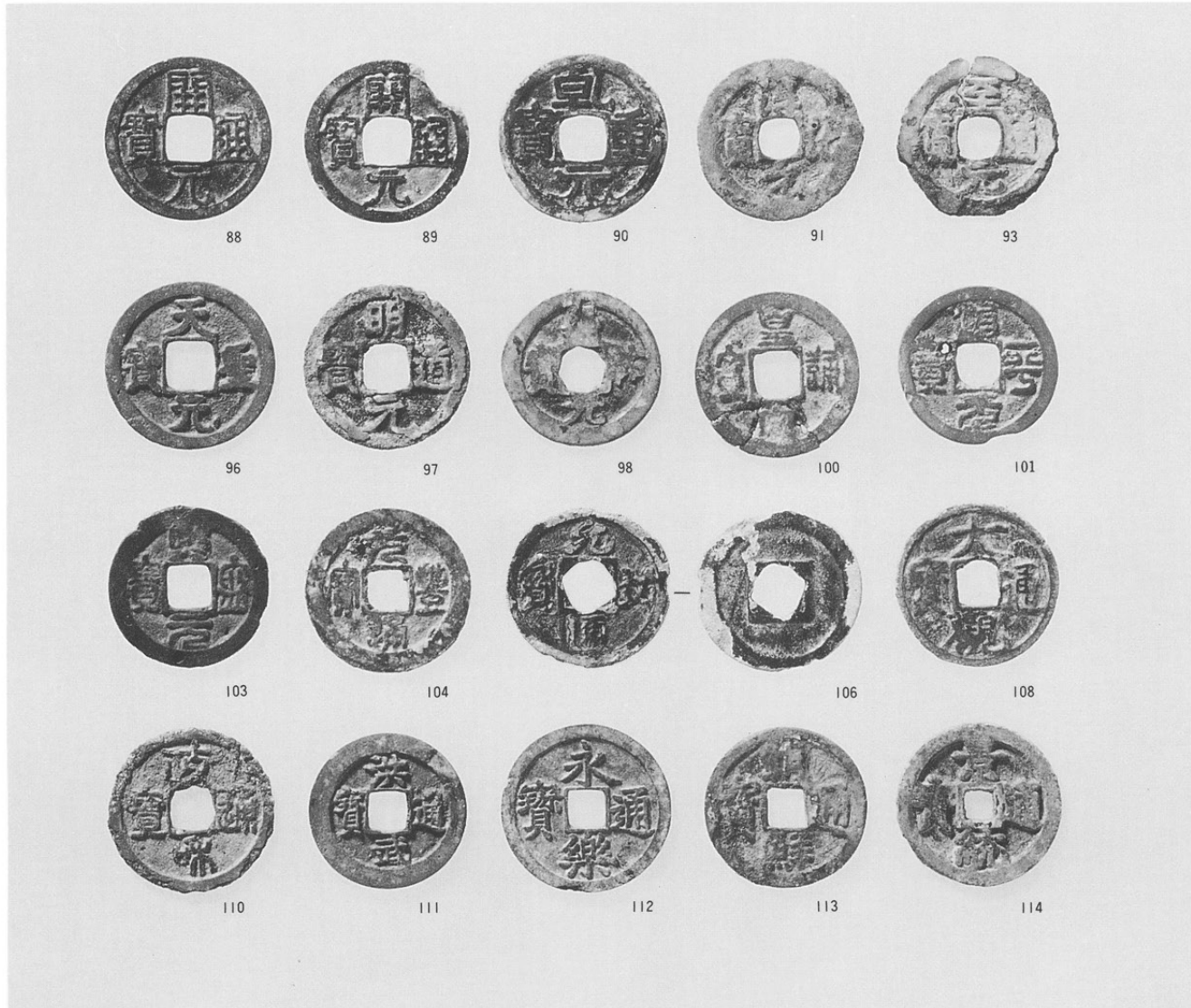
84~86

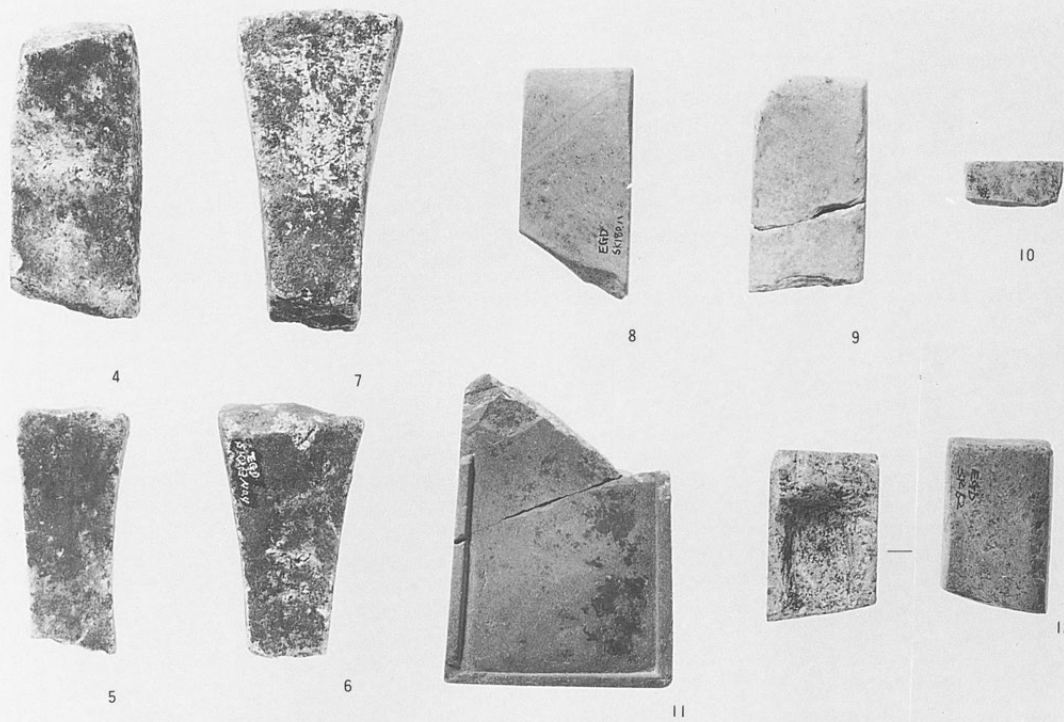
青銅製品
(1:1)



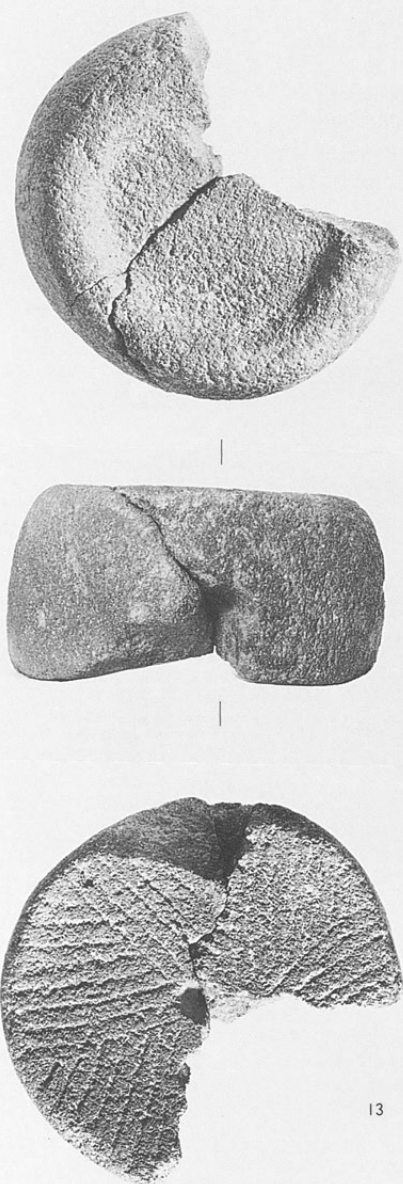
88~114

銭貨





中世石製品
4～10. 砥石
11. 石碗
12. 不明品



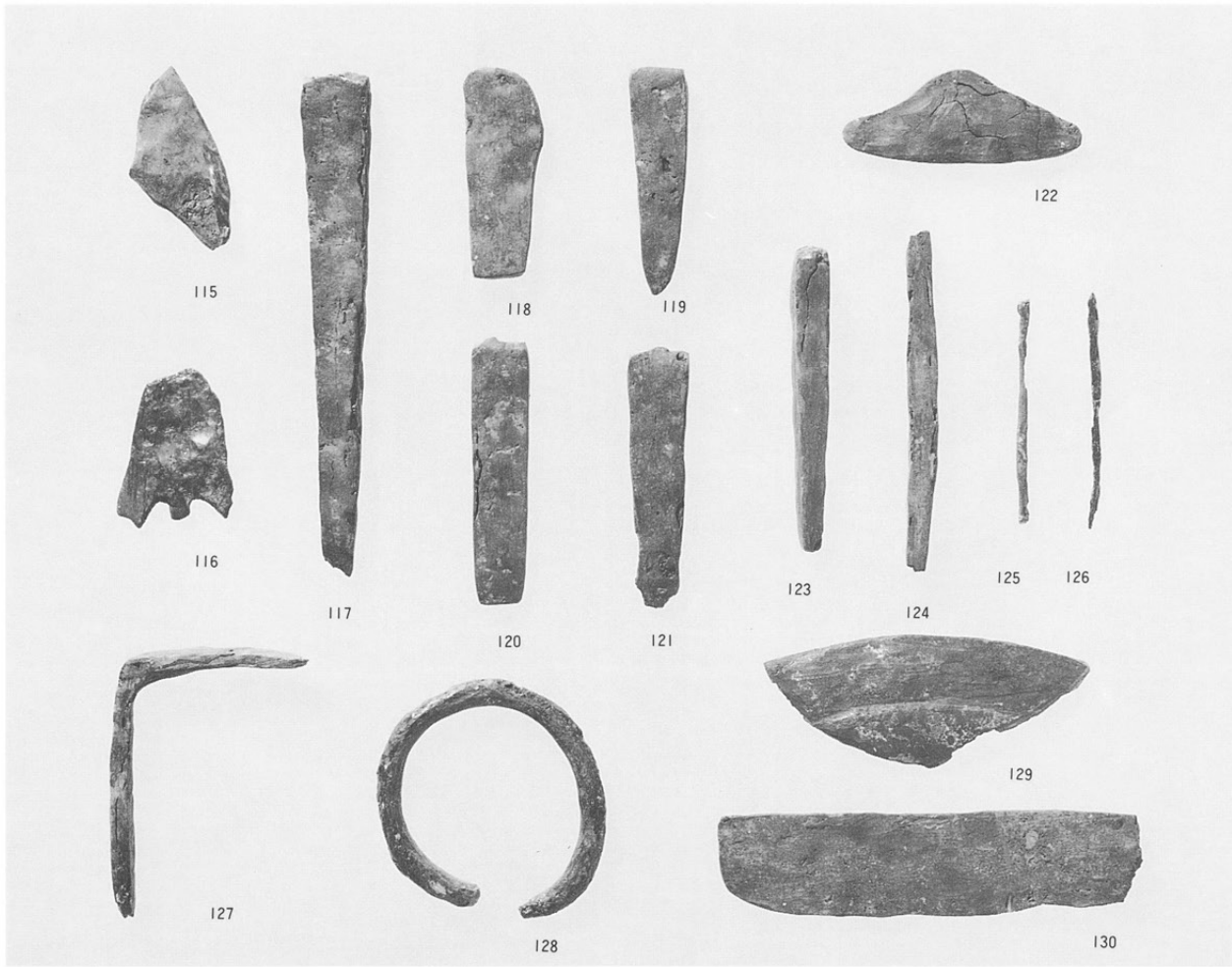
13



13. 石臼(1 : 6)
右 石錘(1 : 4)

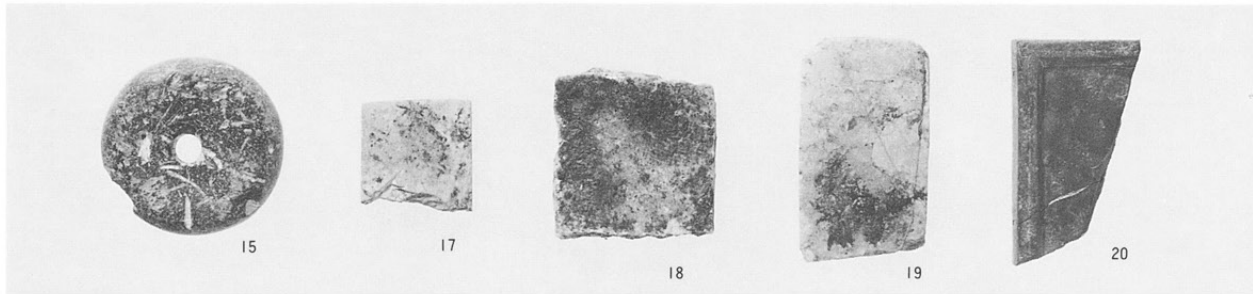
遺構外出土金属製品

115~130. 鉄製品

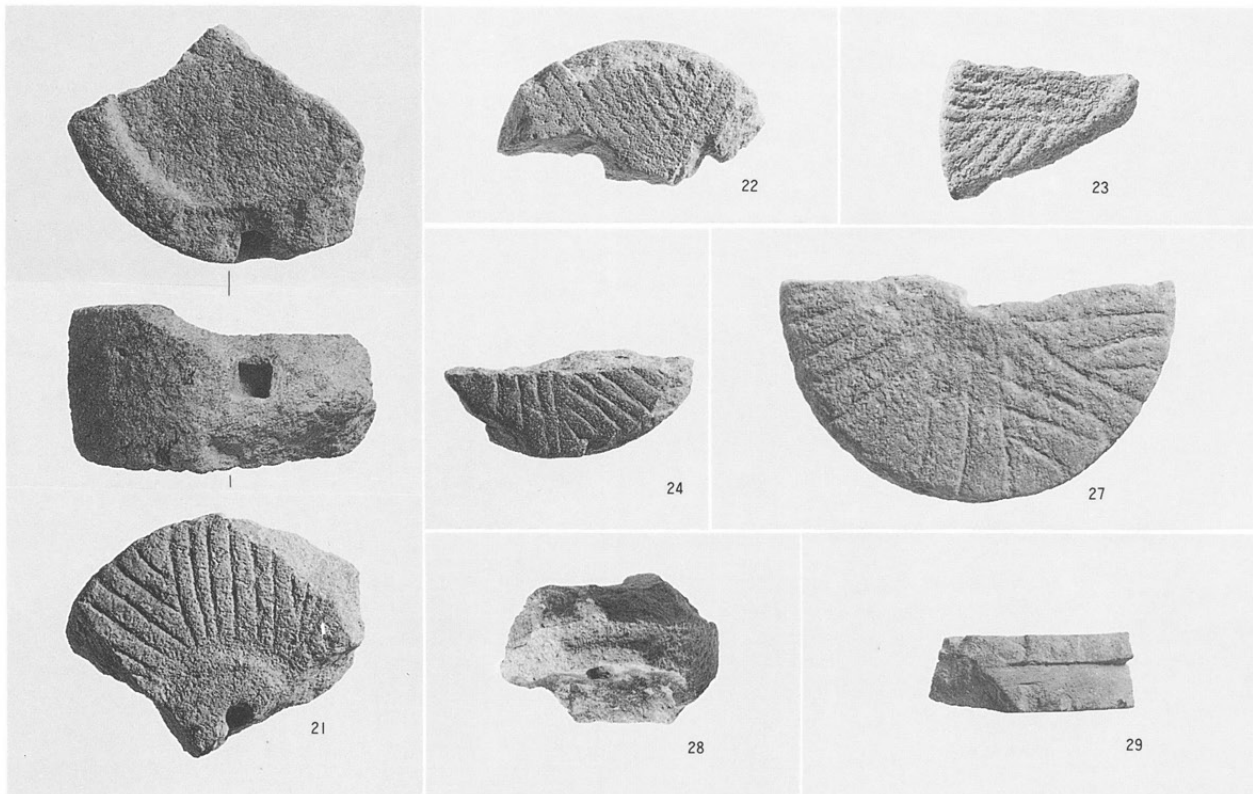


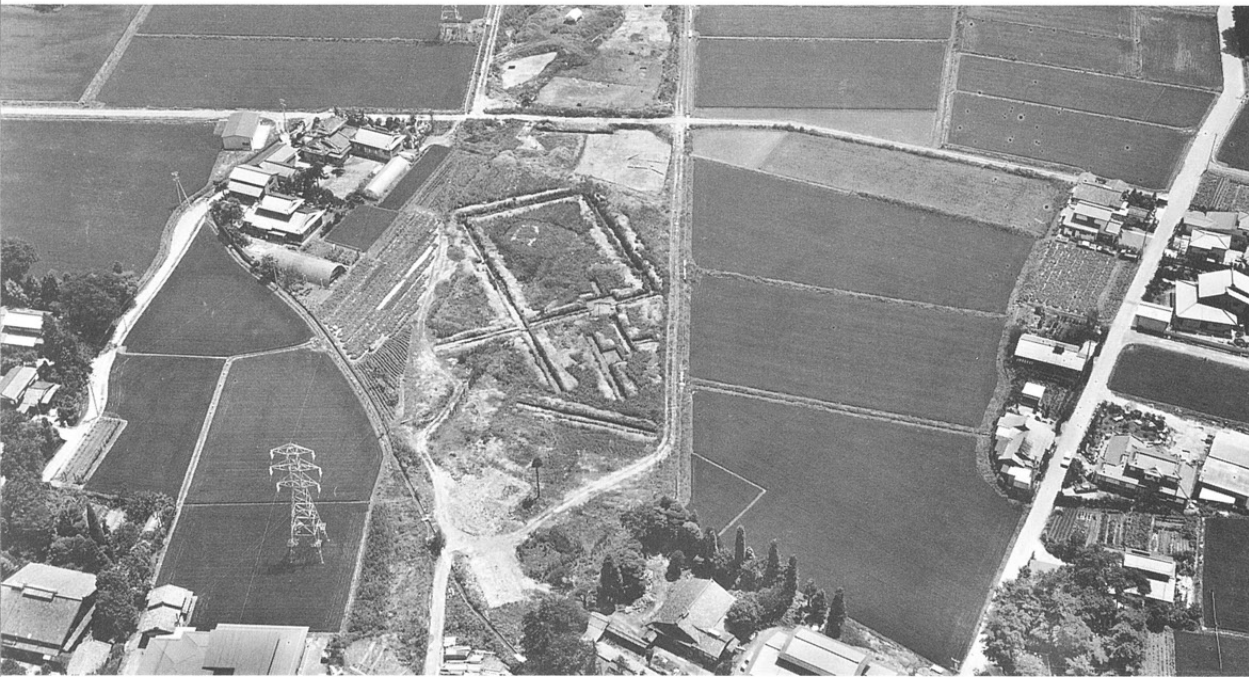
遺構外出土石製品

15. 紡錘車
17~19. 砥石
20. 石硯



21~29石臼(1:6)





遠景
(北上空から)



遠景
(東から)



近景
(北から)

SB1



SB1 出土土器



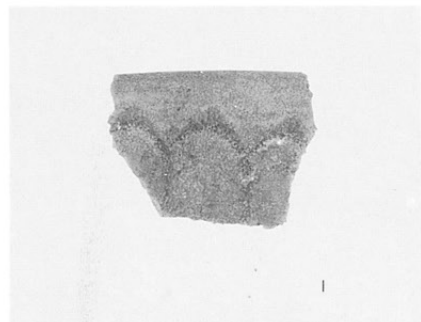
1



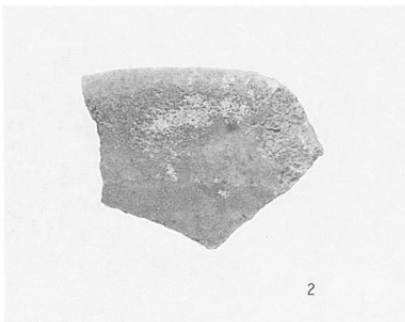
2

遺構外出土遺物

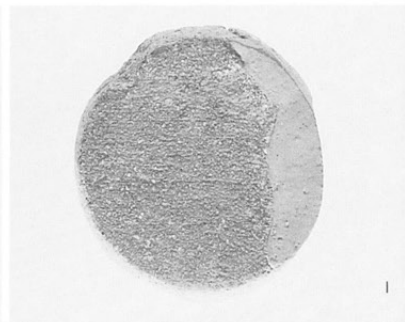
- 1. 青磁片
- 2. 大窯期皿片
- 1. 土製円板



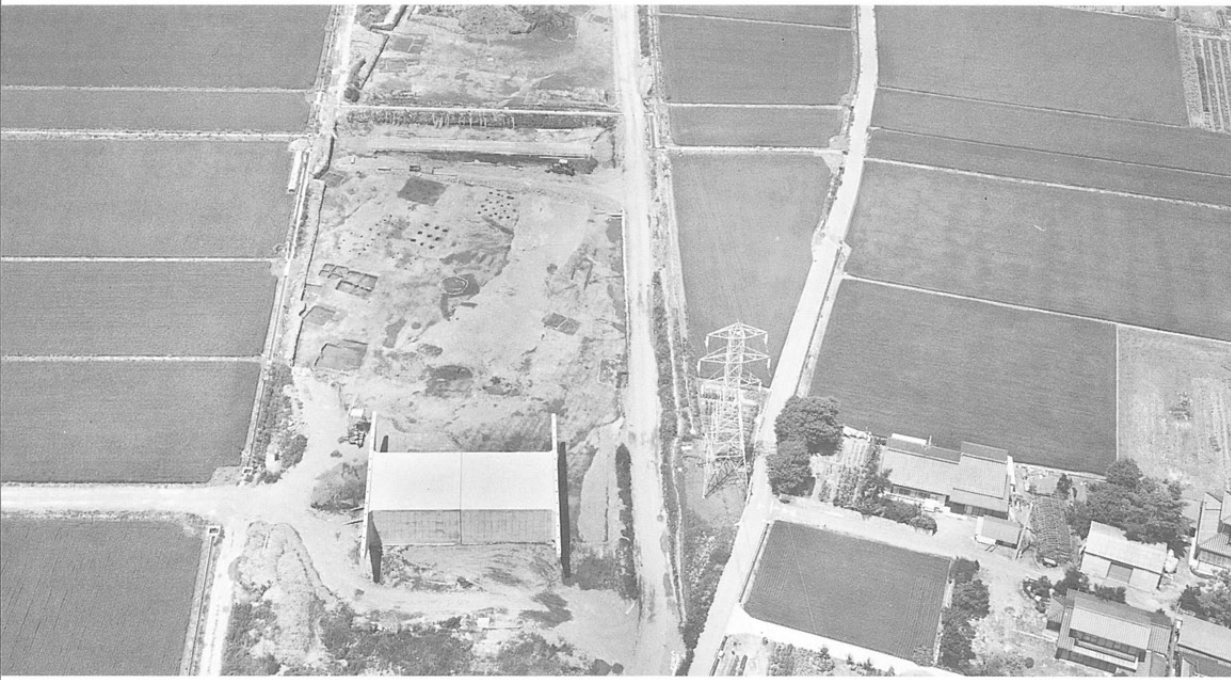
1



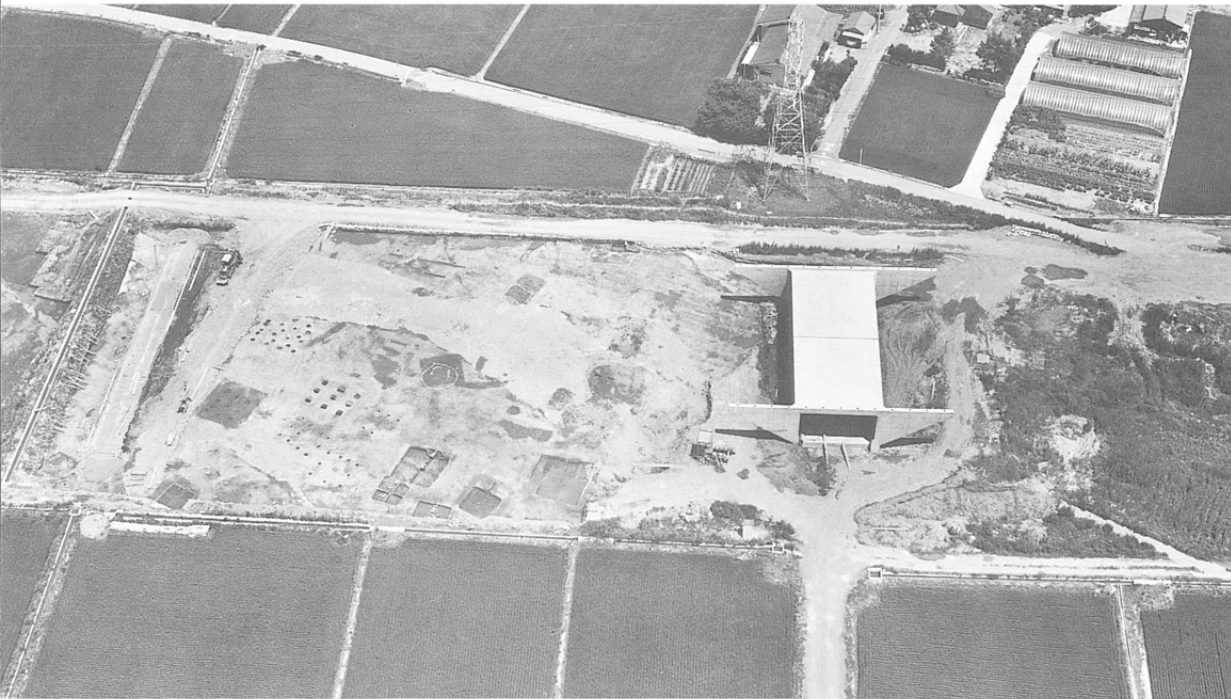
2



1



遠景
(南上空から)



遠景
(西上空から)



近景
(南から)

調査区近景
(上空から)

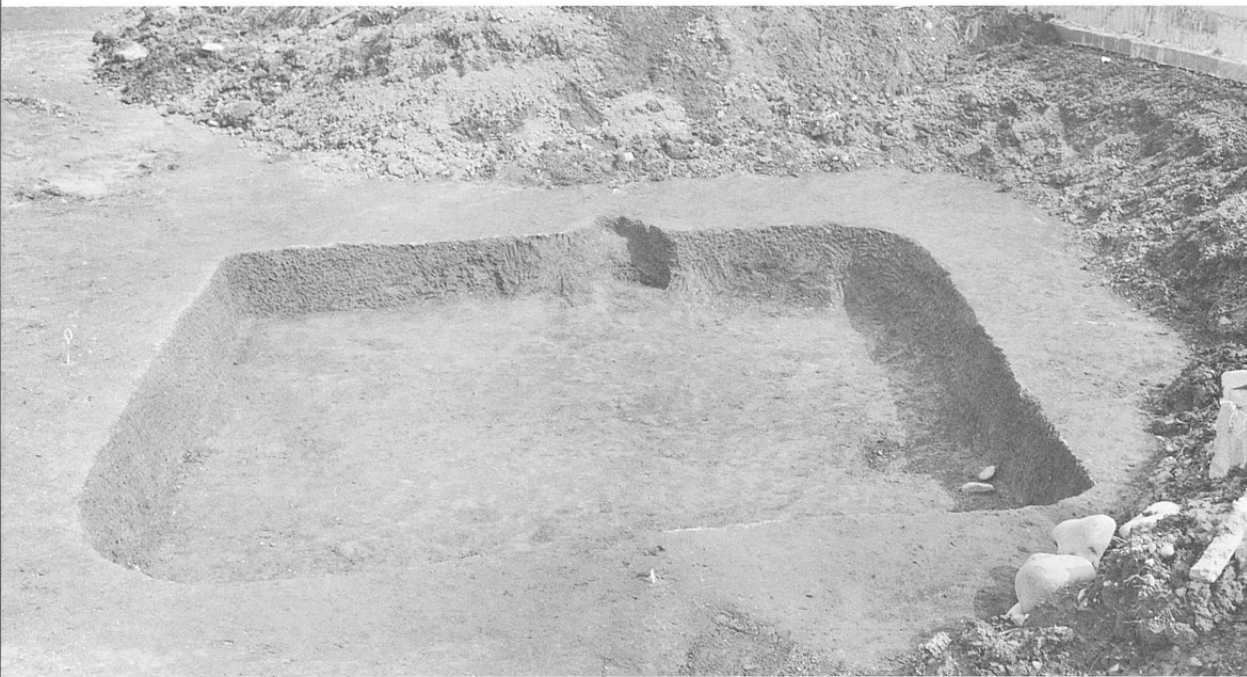


調査区近景
(上空から)



SB1
(東から)





SB3
(西から)



SB4
(南から)



SB4 カマド

SB5
(西から)



SB8
(東から)



左SB5 カマド
右SB8 カマド





SB9
(東から)

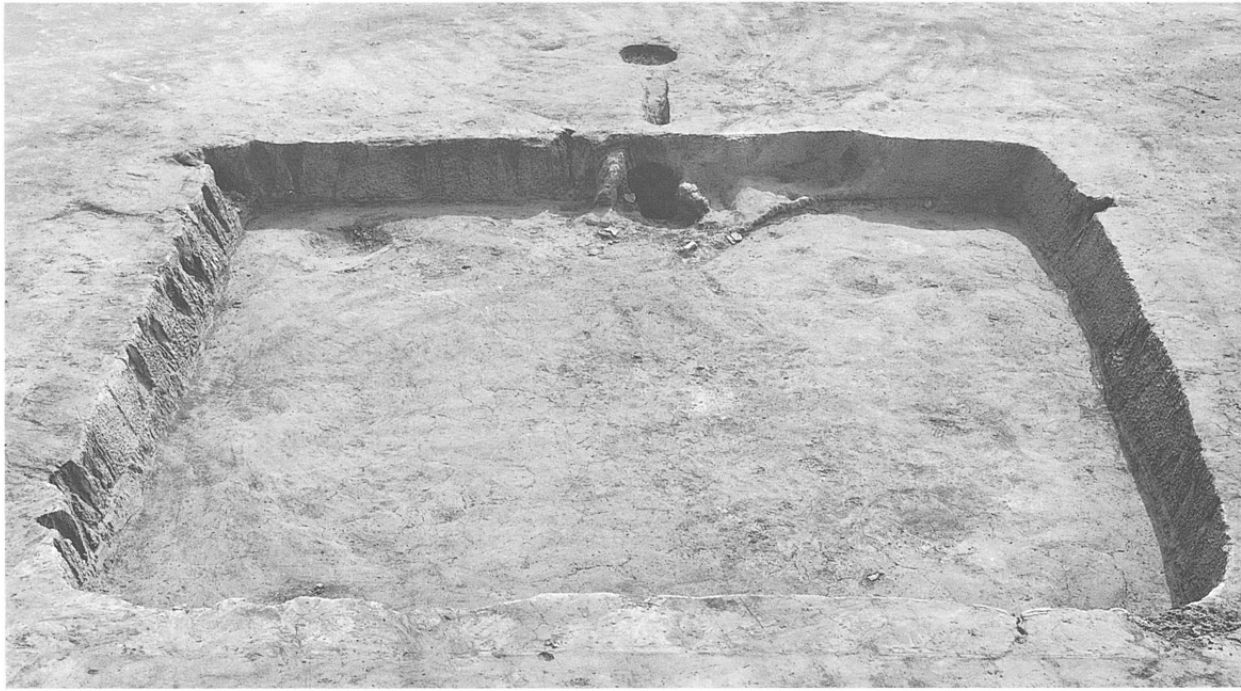


SB14
(東から)



SB15
(西から)

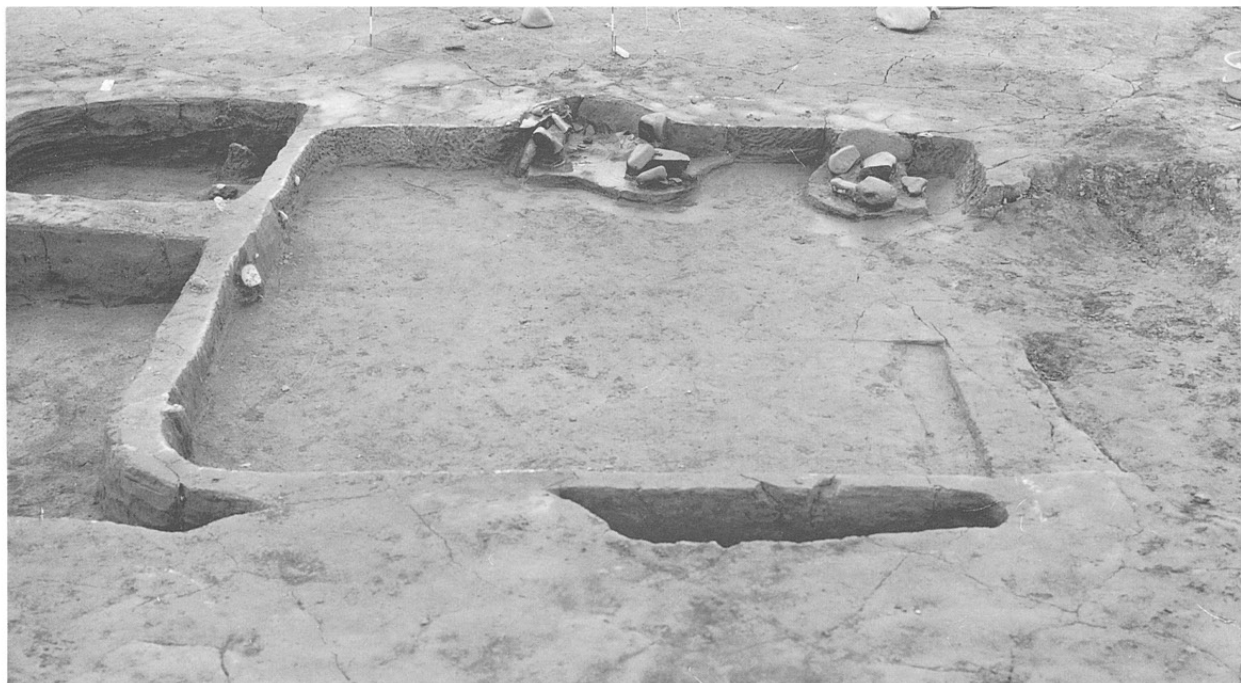
SB17
(西から)

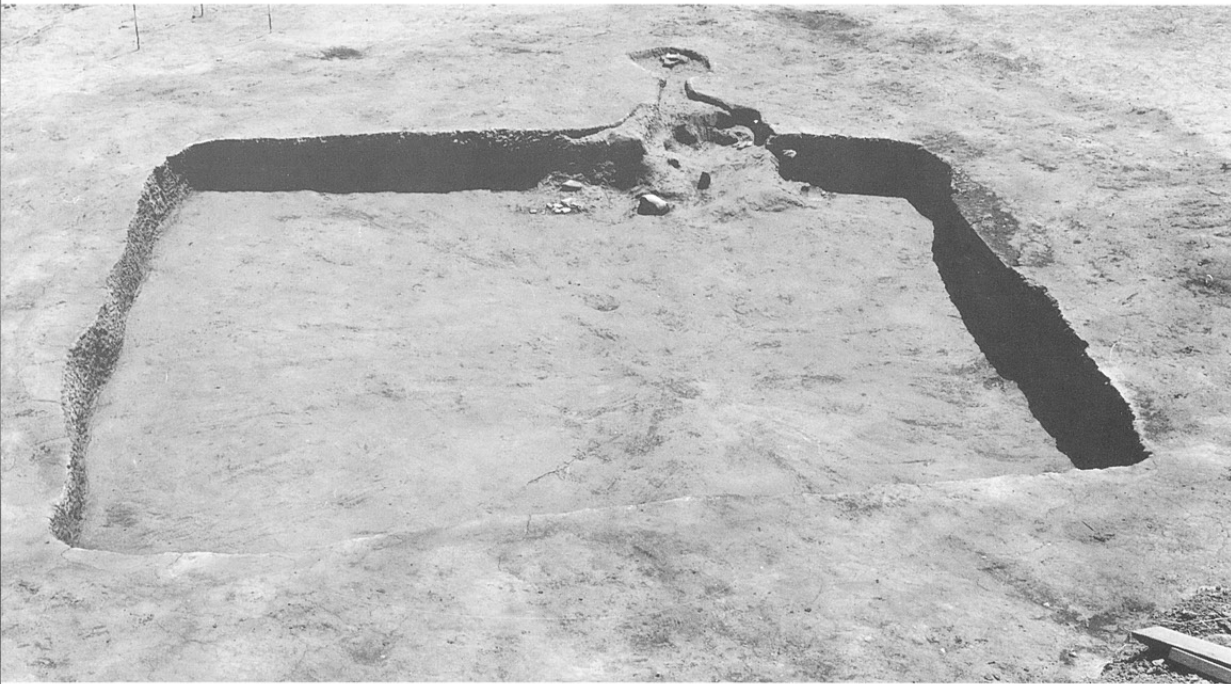


左SB17カマド
右SB22カマド

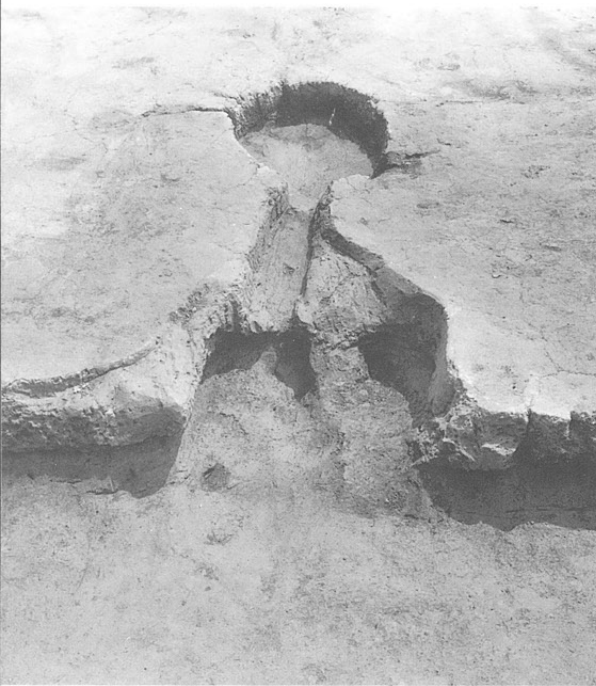


SB22
(西から)





SB25
(西から)



左SB25カマド
右SB29カマド



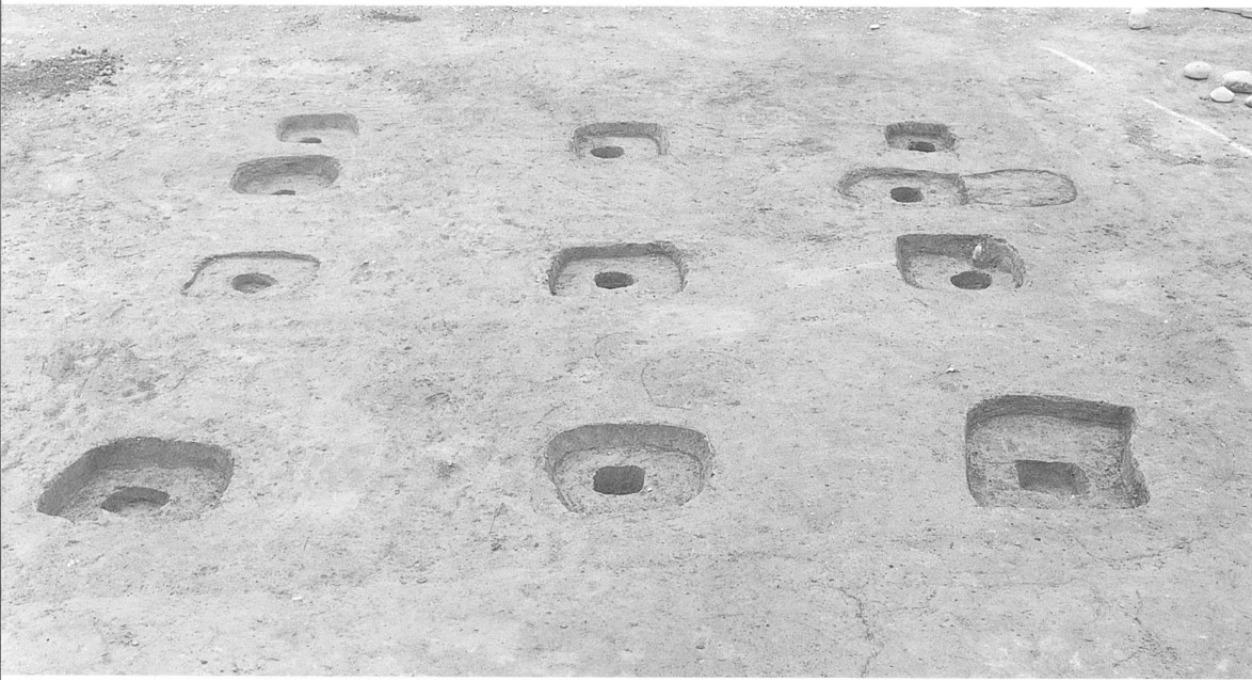
SB29
(西から)

ST1
(南から)



ST4
(南から)





ST6
(南から)



ST7
(南から)



ST9
(南から)

ST10
(南から)

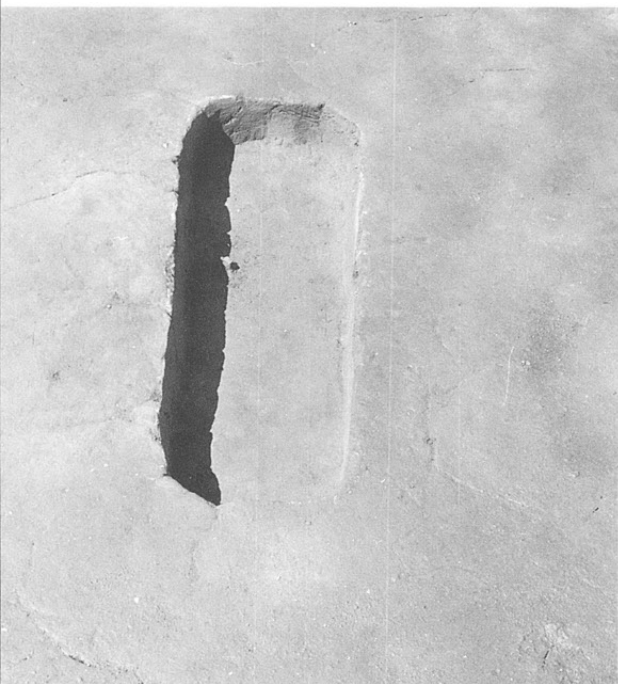


ST11
(南から)



ST16
(南から)





左SK3
右SK7

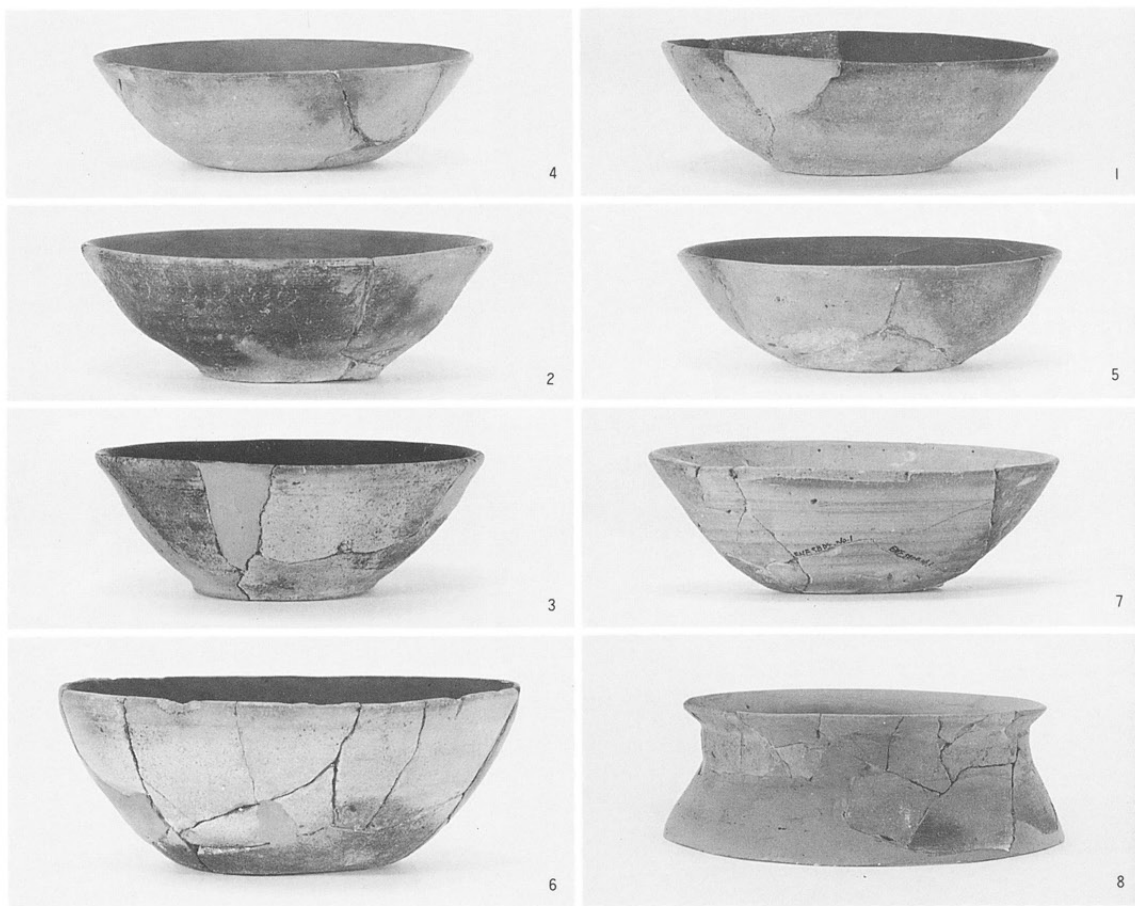


左SK4
右SK4 土器出土状態



左SK11
右SK12

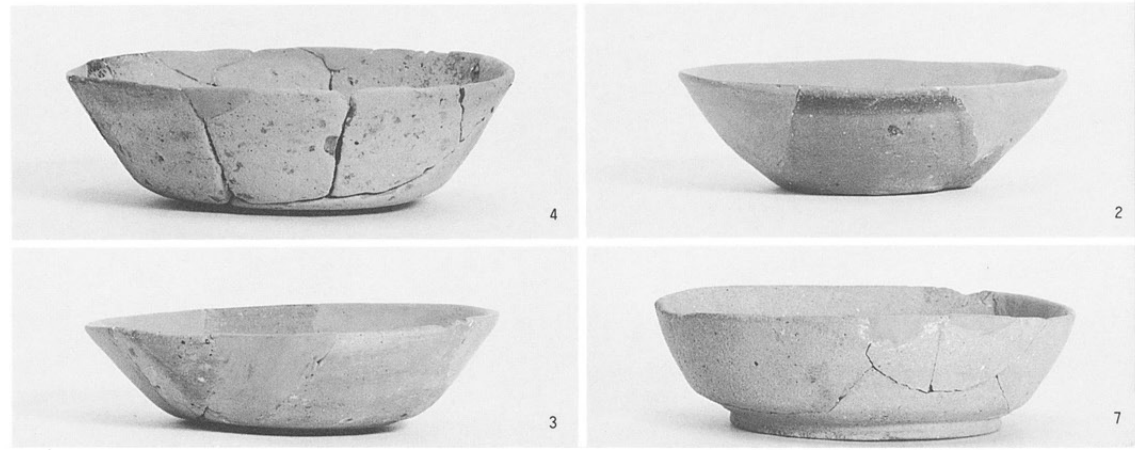
SB4 出土土器



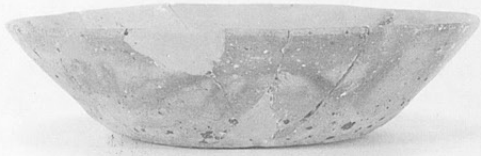
SB15出土土器



SB17出土土器



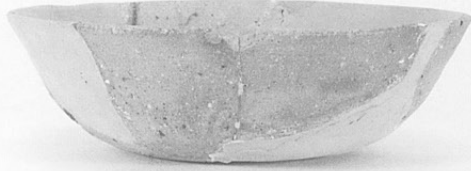
SB12出土土器



3



1



2



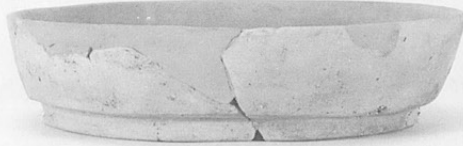
4



6



13



8



9



11



10



17

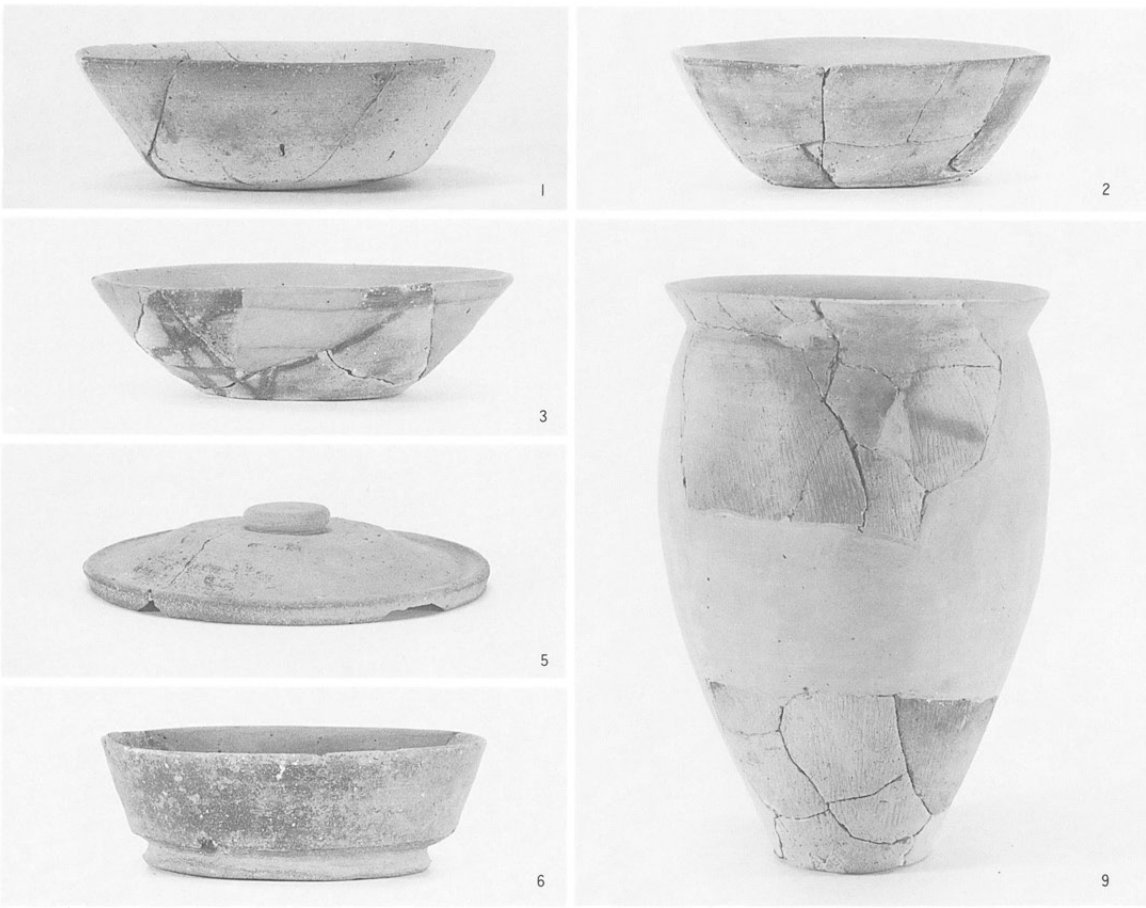


19

SB19出土土器



SB20出土土器





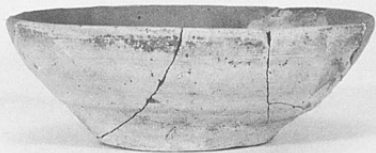
1



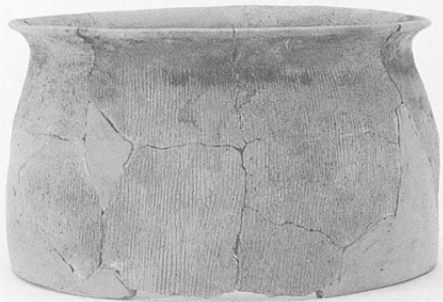
2



3



4



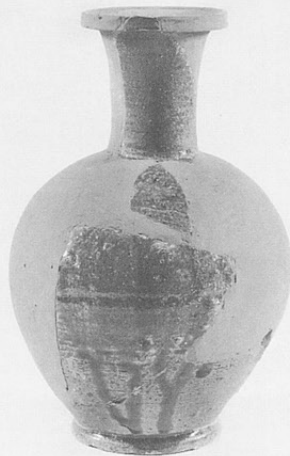
7



5



3



4

SB24出土土器

SB28出土土器



1



2



5

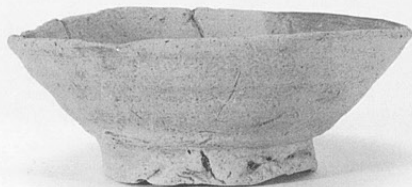
SK 4出土土器



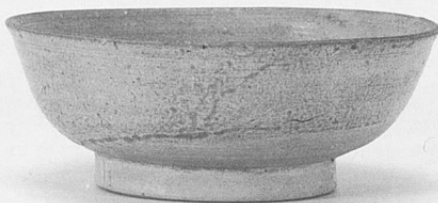
3



6



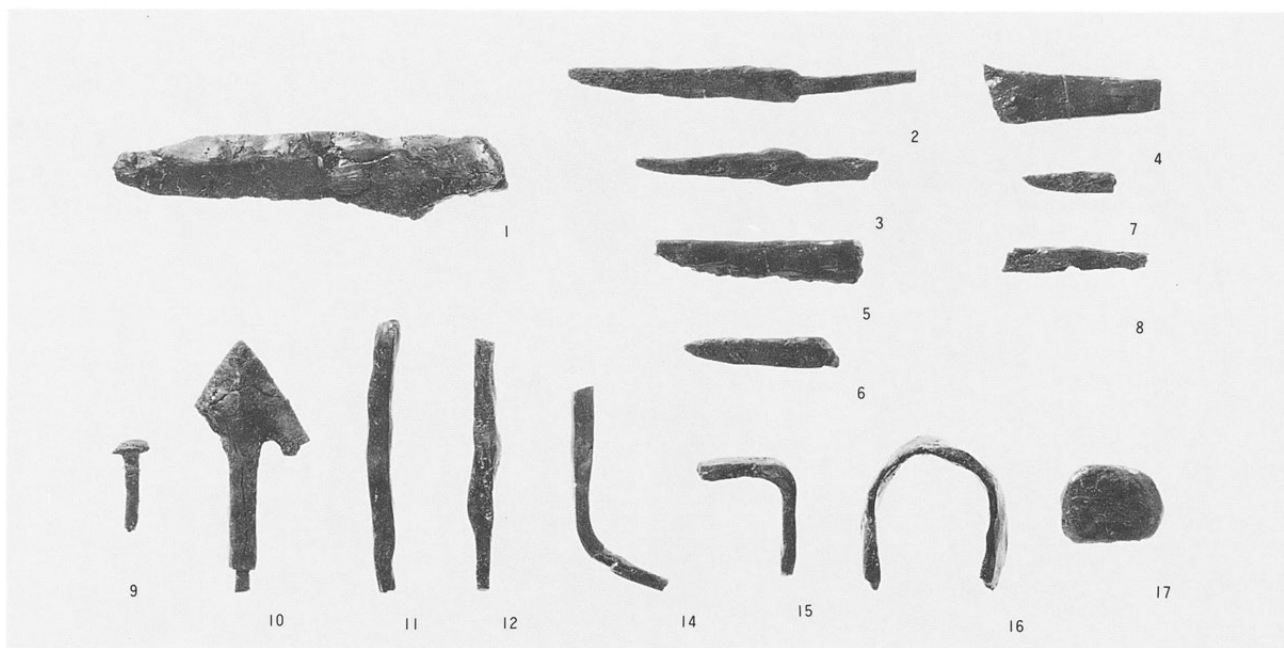
4



7

古代金属製品

1~17鉄製品



古代石製品

1~4砥石(1:2)

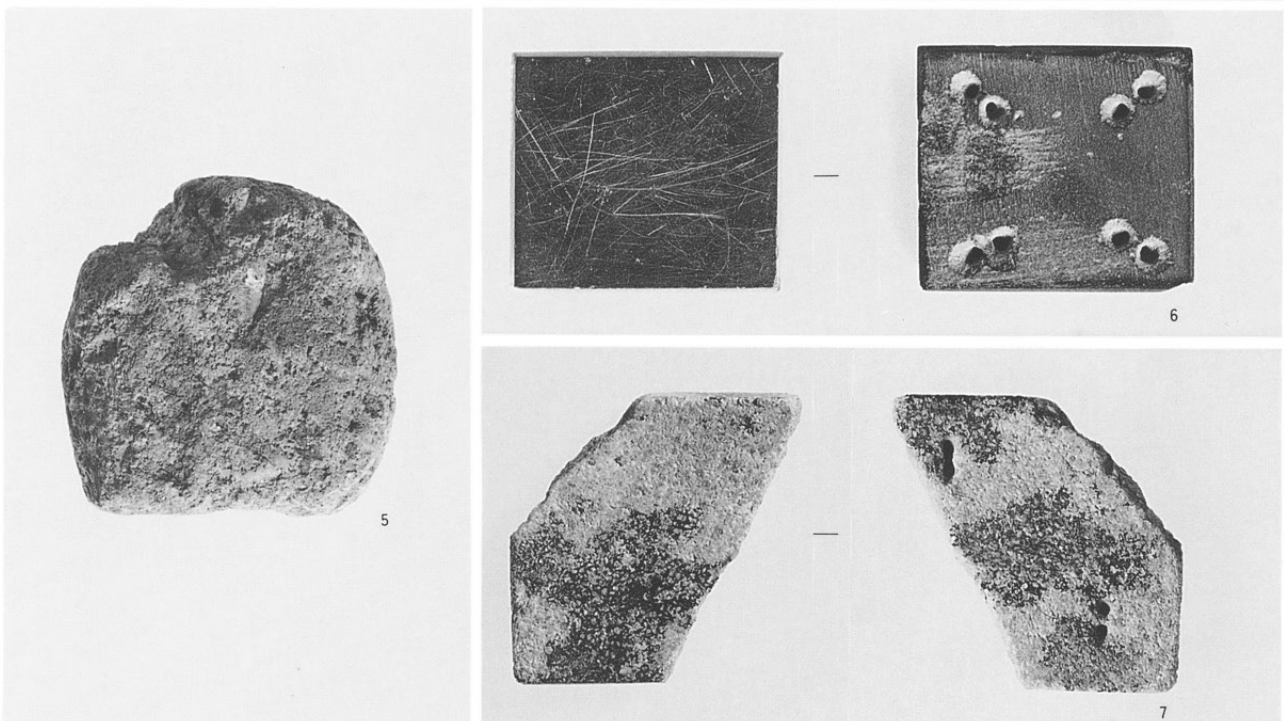


5. 軽石製石製品

(1:2)

6・7石帯

(1:1.5)



古代石製品

SB20出土石錘
(1:4)



SB25出土石錘
(1:4)



(財)長野県埋蔵文化財センター発掘調査報告書 5

中央自動車道長野線埋蔵文化財発掘調査報告書 5

—松本市内 その2—

神戸遺跡 上二子遺跡 中二子遺跡

発行 平成元年3月31日発行

発行者 日本道路公団名古屋建設局

長野県教育委員会

(財)長野県埋蔵文化財センター

印刷 信毎書籍株式会社

